

Company: Esso Australia Pty Ltd

Well: Snapper A1a

Field: Snapper

Rig: Nabors 175

Country: Australia

6" Junk Basket
4.5" HSD Perforation Record

Nabors 175
Snapper
GDA94/MGA94 Zone55
Snapper A1a
Esso Australia Pty Ltd

LOCATION			
GDA94/MGA94 Zone55		Elev.: K.B. 41.70 m	
N:5.772,180.379m		G.L. -55.00 m	
E:589,787.584m		D.F. 41.70 m	
Permanent Datum:	Mean Sea Level		
Log Measured From:	Drill Floor		
Drilling Measured From:	Drill Floor		
State: Victoria	Max. Well Deviation 37.47 deg	Longitude 148 1'31.298"E	Latitude 38 11'37.840"S

Logging Date	3-Sep-2008			
Run Number	1 through 5			
Depth Driller	2819 m			
Schlumberger Depth				
Bottom Log Interval	2819 m			
Top Log Interval	1400 m			
Casing Fluid Type	OMB			
Salinity				
Density	8.55 lbm/gal			
Fluid Level				
BIT/CASING/TUBING STRING				
Bit Size	8.500 in			
From	21 m			
To	2819 m			
Casing/Tubing Size	7.000 in			
Weight	26 lbm/ft			
Grade	L-80			
From	21 m			
To	2795 m			
Maximum Recorded Temperatures				
Logger On Bottom	3-Sep-2008			
Unit Number	3829	Location	AUSL	
Recorded By	B. Donahoe, S. Gilbert			
Witnessed By	Mr D. Daniels, Mr R. Spence			

PVT DATA			
Oil Density	Run 1	Run 2	Run 3
Water Salinity			
Gas Gravity			
Bo			
Bw			
1/Bg			
Bubble Point Pressure			
Bubble Point Temperature			
Solution GOR			
Maximum Deviation	37.47 deg		
CEMENTING DATA			
Primary/Squeeze	Primary		
Casing String No			
Lead Cement Type			
Volume			
Density			
Water Loss			
Additives			
Tail Cement Type			
Volume			
Density			
Water Loss			
Additives			
Expected Cement Top			
Logging Date			
Run Number			
Depth Driller			
Schlumberger Depth			
Bottom Log Interval			
Top Log Interval			
Casing Fluid Type			
Salinity			
Density			
Fluid Level			
BIT/CASING/TUBING STRING			
Bit Size			
From			
To			
Casing/Tubing Size			
Weight			
Grade			
From			
To			
Maximum Recorded Temperatures			
Logger On Bottom		Time	
Unit Number		Location	
Recorded By			
Witnessed By			

DEPTH SUMMARY LISTING	
-----------------------	--

Date Created: 27-JUN-2008 21:21:18

Depth System Equipment

Depth Measuring Device		Tension Device		Logging Cable	
Type:	IDW-H	Type:	CMTD-B/A	Type:	7-46ZV-XS
Serial Number:	797	Serial Number:	2268	Serial Number:	707379
Calibration Date:	04-Dec-2007	Calibration Date:	13-Feb-2008	Length:	9144.00 M
Calibrator Serial Number:	1009	Calibrator Serial Number:	1052		
Calibration Cable Type:	7-46ZV-XS	Calibration Gain:	1.19	Conveyance Method:	Wireline
Wheel Correction 1:	-6	Calibration Offset:	-813.00	Rig Type:	Offshore_Fixed
Wheel Correction 2:	-3				

Depth Control Parameters	
--------------------------	--

Log Sequence:	First Log In the Well
Rig Up Length At Surface:	0.00 M
Rig Up Length At Bottom:	0.00 M
Rig Up Length Correction:	0.00 M
Stretch Correction:	0.30 M
Tool Zero Check At Surface:	-50000.00 M

Depth Control Remarks	
-----------------------	--

1. All Schlumberger depth control procedures followed.
2. IDW used as primary depth control, Z-chart used as secondary depth control.
- 3.
- 4.
- 5.
- 6.

DISCLAIMER

THE USE OF AND RELIANCE UPON THIS RECORDED-DATA BY THE HEREIN NAMED COMPANY (AND ANY OF ITS AFFILIATES, PARTNERS, REPRESENTATIVES, AGENTS, CONSULTANTS AND EMPLOYEES) IS SUBJECT TO THE TERMS AND CONDITIONS AGREED UPON BETWEEN SCHLUMBERGER AND THE COMPANY, INCLUDING: (a) RESTRICTIONS ON USE OF THE RECORDED-DATA; (b) DISCLAIMERS AND WAIVERS OF WARRANTIES AND REPRESENTATIONS REGARDING COMPANY'S USE OF AND RELIANCE UPON THE RECORDED-DATA; AND (c) CUSTOMER'S FULL AND SOLE RESPONSIBILITY FOR ANY INFERENCE DRAWN OR DECISION MADE IN CONNECTION WITH THE USE OF THIS RECORDED-DATA.

OTHER SERVICES1	OTHER SERVICES2
OS1: Gyro Survey	OS1:
OS2:	OS2:
OS3:	OS3:
OS4:	OS4:
OS5:	OS5:

REMARKS: RUN NUMBER 1	REMARKS: RUN NUMBER 2
Log Correlated to Exxon mobile Correlation Log supplied with Logging Program	
Objective: Run a 6" Junk Basket and gauge ring to HUD to ensure access for Completion and Perforation Guns.	
Perforate the well over the intervals 2564m to 2567.5m MDKB and 2374.5m to 2377.5m MDKB using	
4.5" 12 SPF 135/45 Degree Phased HSD Guns . Run 6" Gauge ring to HUD to ensure access for completion .	
Maximum Well deviation = 37.5 degees	
HUD: 2765m MDKB	
Junk Basket - CGL to Bottom of Tool = 2.2 m	

REMARKS: RUN NUMBER 1	REMARKS: RUN NUMBER 2
Log Correlated to Exxon mobile Correlation Log supplied with Logging Program	
Objective: Run a 6" Junk Basket and gauge ring to HUD to ensure access for Completion and Perforation Guns.	
Perforate the well over the intervals 2564m to 2567.5m MDKB and 2374.5m to 2377.5m MDKB using	
4.5" 12 SPF 135/45 Degree Phased HSD Guns . Run 6" Gauge ring to HUD to ensure access for completion .	
Maximum Well deviation = 37.5 degees	
HUD: 2765m MDKB	
Junk Basket - CGL to Bottom of Tool = 2.2 m	

Log Correlated to Exxon mobile Correlation Log supplied with Logging Program

Objective: Run a 6" Junk Basket and gauge ring to HUD to ensure access for Completion and Perforation Guns.

Perforate the well over the intervals 2564m to 2567.5m MDKB and 2374.5m to 2377.5m MDKB using

4.5" 12 SPF 135/45 Degree Phased HSD Guns. Run 6" Gauge ring to HUD to ensure access for completion.

Maximum Well deviation = 37.5 degrees

HUID: 2765m MDKB

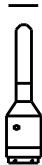
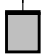

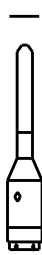





Junk Basket - CCL to Bottom of Tool = 2.2 m

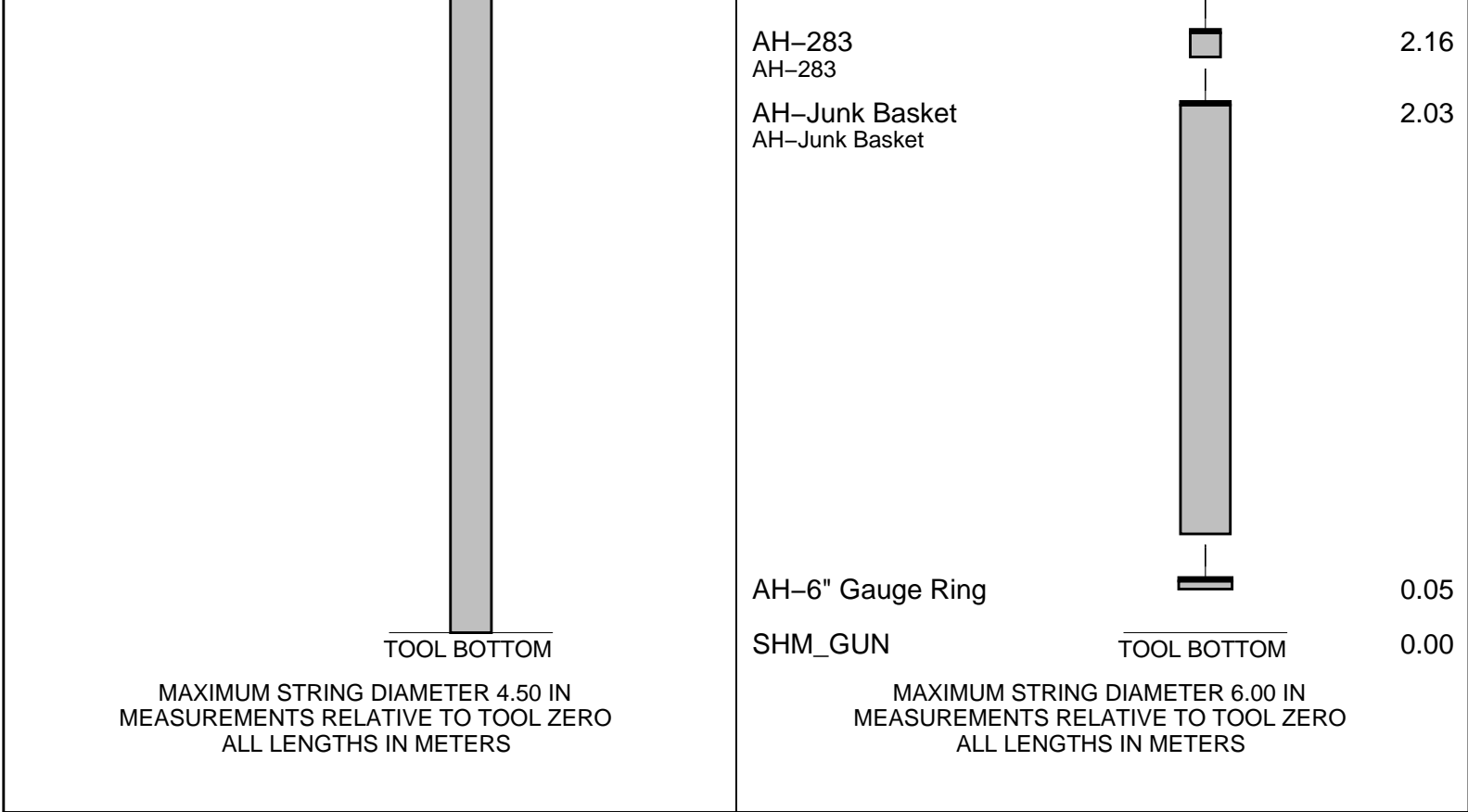
Junk Basket - CCL to Bottom of Tool = 2.5 m					
Gun # 1					
Top Shot @ 2564m MDKB					
CCL to Top Shot = 1.1 m					
CCL Stop Depth = 2562.9 m MDKB					
Gun # 2					
Top Shot @ 2374.5m MDKB					
CCL to Top Shot = 1.1 m					
CCL Stop Depth = 2373.4 m MDKB					
Schlumberger Crew - P Flood , R Tompson , S Kiss (Days)					
- L Dooly , M Hancock					

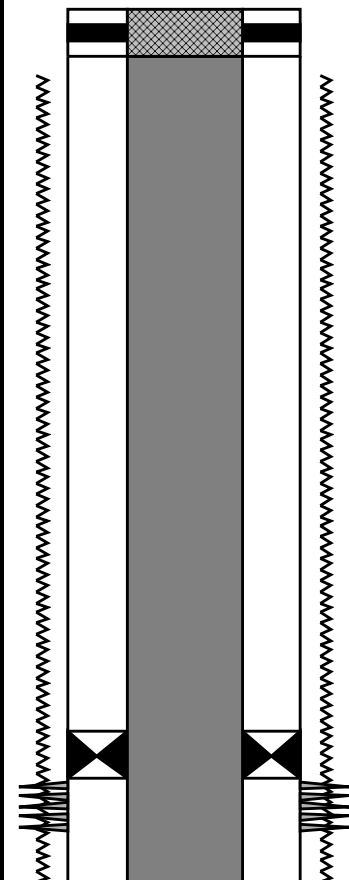
RUN 1			RUN 2		
SERVICE ORDER #:		AusI08390603	SERVICE ORDER #:		
PROGRAM VERSION:		16C0-147	PROGRAM VERSION:		
FLUID LEVEL:			FLUID LEVEL:		
LOGGED INTERVAL	START	STOP	LOGGED INTERVAL	START	STOP

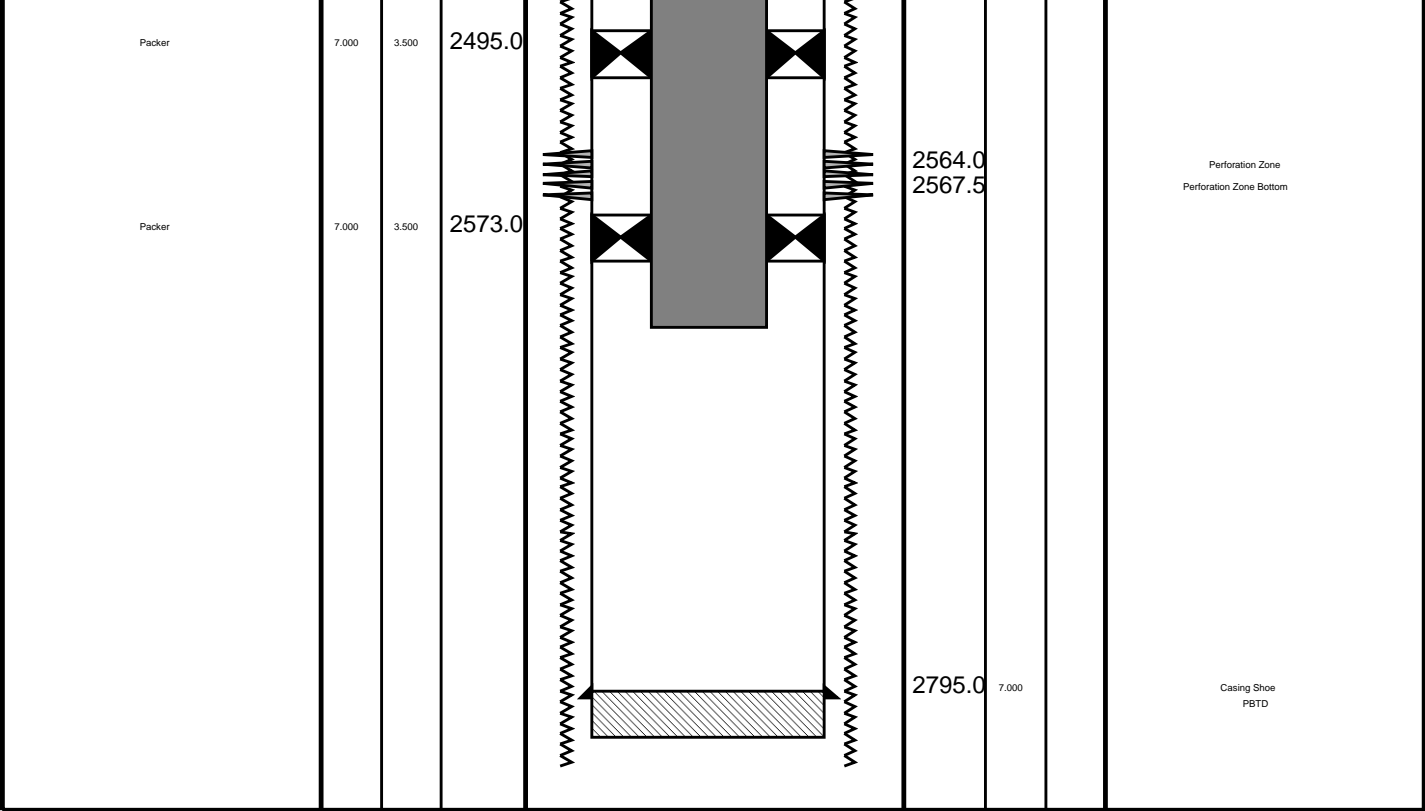
EQUIPMENT DESCRIPTION					
RUN 1			RUN 2		

SURFACE EQUIPMENT		SURFACE EQUIPMENT	
WITM (SHM)		WITM (SHM)	

DOWNHOLE EQUIPMENT			DOWNHOLE EQUIPMENT		
PEH-A PEH-A		10.14			
AH-66 AH-66		9.12			
PGGT-D PGGC PGGH-D		8.87	PEH-A PEH-A		5.21
Gamma Ray	___ 1.07				
Casing Co Tension	___ TOOL ZERO				
AH-283		7.09	AH-66 AH-66		4.20
AH-3 3/8" HSD Fireing Head AH-3 3/8" HSD Fireing Head		6.96	PGGT-D PGGC PGGH-D		3.94
SHM_GUN GUN-3.5m HSD GUN		6.40	Gamma Ray	___ 1.07	
			Casing Co Tension	___ TOOL ZERO	



Production String			Well Schematic			Casing String			
<div>(in)</div> <div>OD ID MD</div>			<div>(m)</div> <div>MD OD ID</div>						
Tubing Hanger	7.000	3.500	21.0				21.0	7.000	
Tubing	3.500		21.0				55.0	8.500	
Packer	7.000	3.500	2361.0	2374.5					Perforation Zone



Job Events Summary

MAXIS Field Log

Schlumberger Job Event Summary

Time	Elapsed Time	Depth (M)	File
Log Pass (up)	4-Sep-2008 13:58	000:47	2822.4 – 2288.7 PERFO_009LUP
Log Pass (up)	5-Sep-2008 1:58	000:06	2585.9 – 2538.8 PERFO_019LUP
Log Pass (up)	5-Sep-2008 2:06	000:19	2601.9 – 2542.8 PERFO_020LUP
Log Pass (down)	5-Sep-2008 7:48	000:31	57.6 – 2614.3 PERFO_034LDP

Company: Esso Australia Pty Ltd

Well: Snapper A1a

Output DLIS Files

DEFAULT PERFO_029LUP FN:28 PRODUCER 05-Sep-2008 05:49

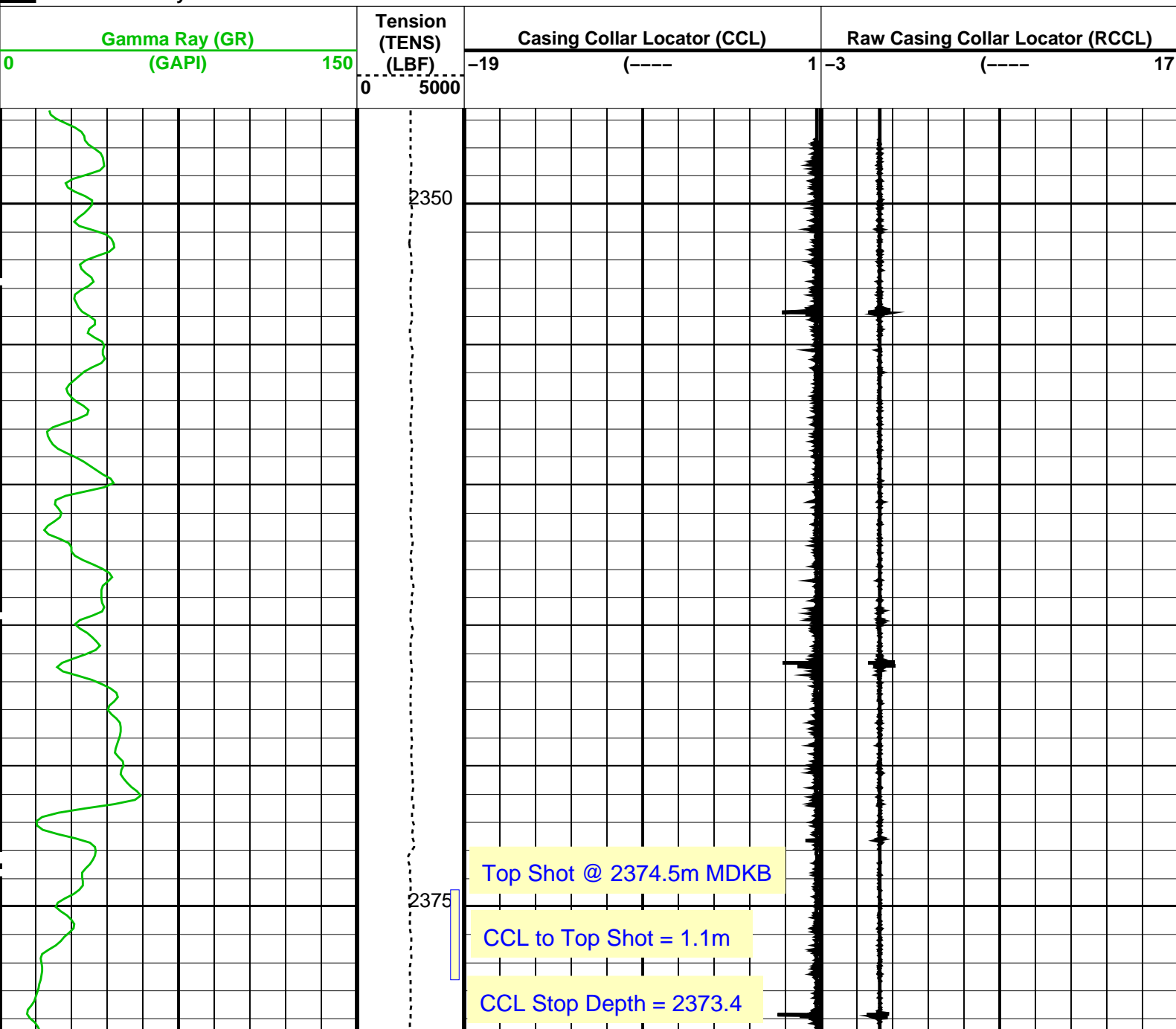
OP System Version: 16C0-147

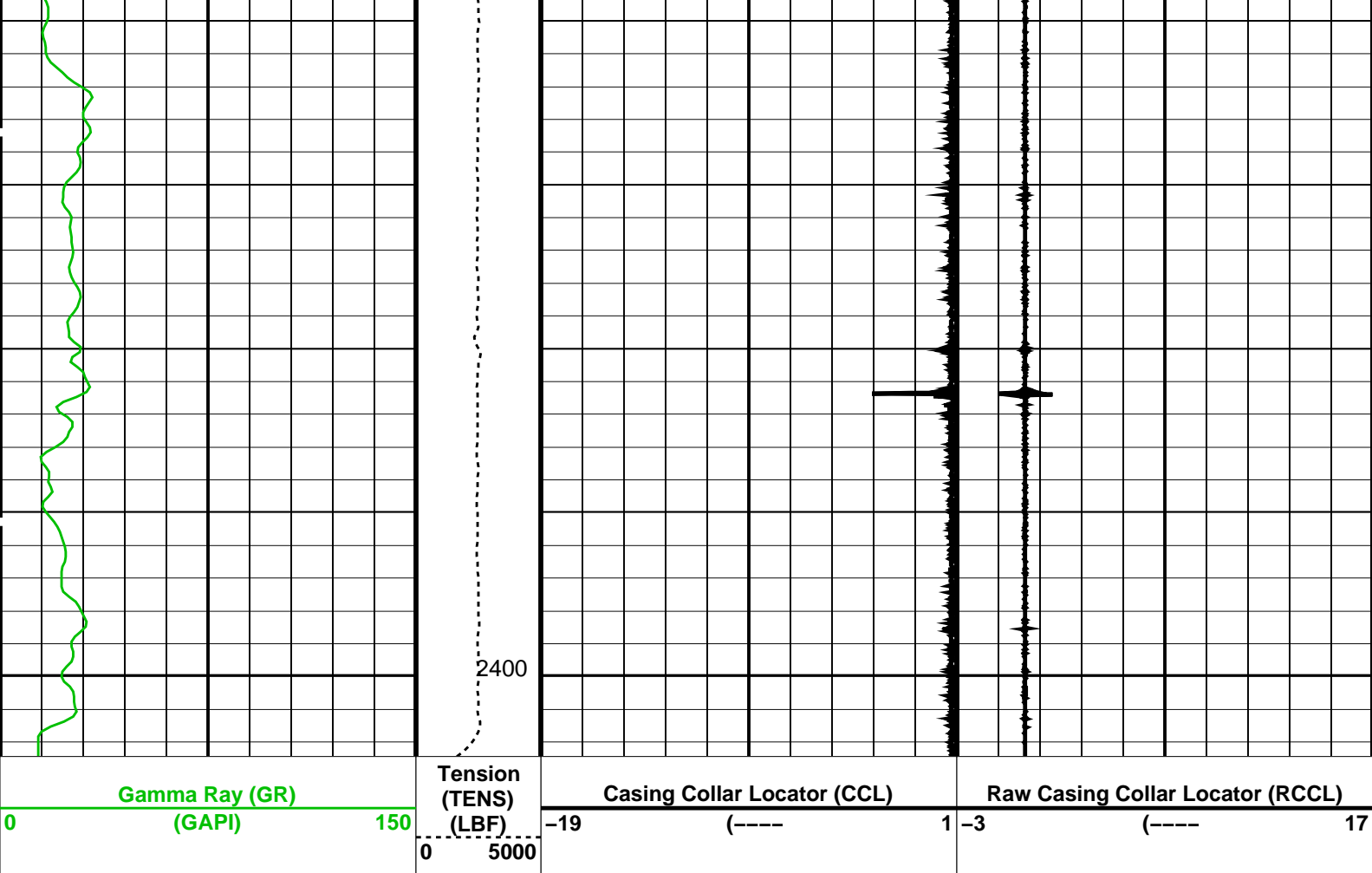
MCM

SHM_GUN 16C0-147 PGGT-D 16C0-147

PIP SUMMARY

Time Mark Every 60 S





PIP SUMMARY

☐ Time Mark Every 60 S

Format: CCLLog Vertical Scale: 1:200

Graphics File Created: 05-Sep-2008 05:49

OP System Version: 16C0-147

MCM

SHM_GUN

16C0-147

PGGT-D

16C0-147

Output DLIS Files

DEFAULT

PERFO_029LUP

FN:28

PRODUCER

05-Sep-2008 05:49

Schlumberger

Gun # 2 Correlation Pass

MAXIS Field Log

Company: Esso Australia Pty Ltd

Well: Snapper A1a

Output DLIS Files

DEFAULT

PERFO_028LUP

FN:27

PRODUCER

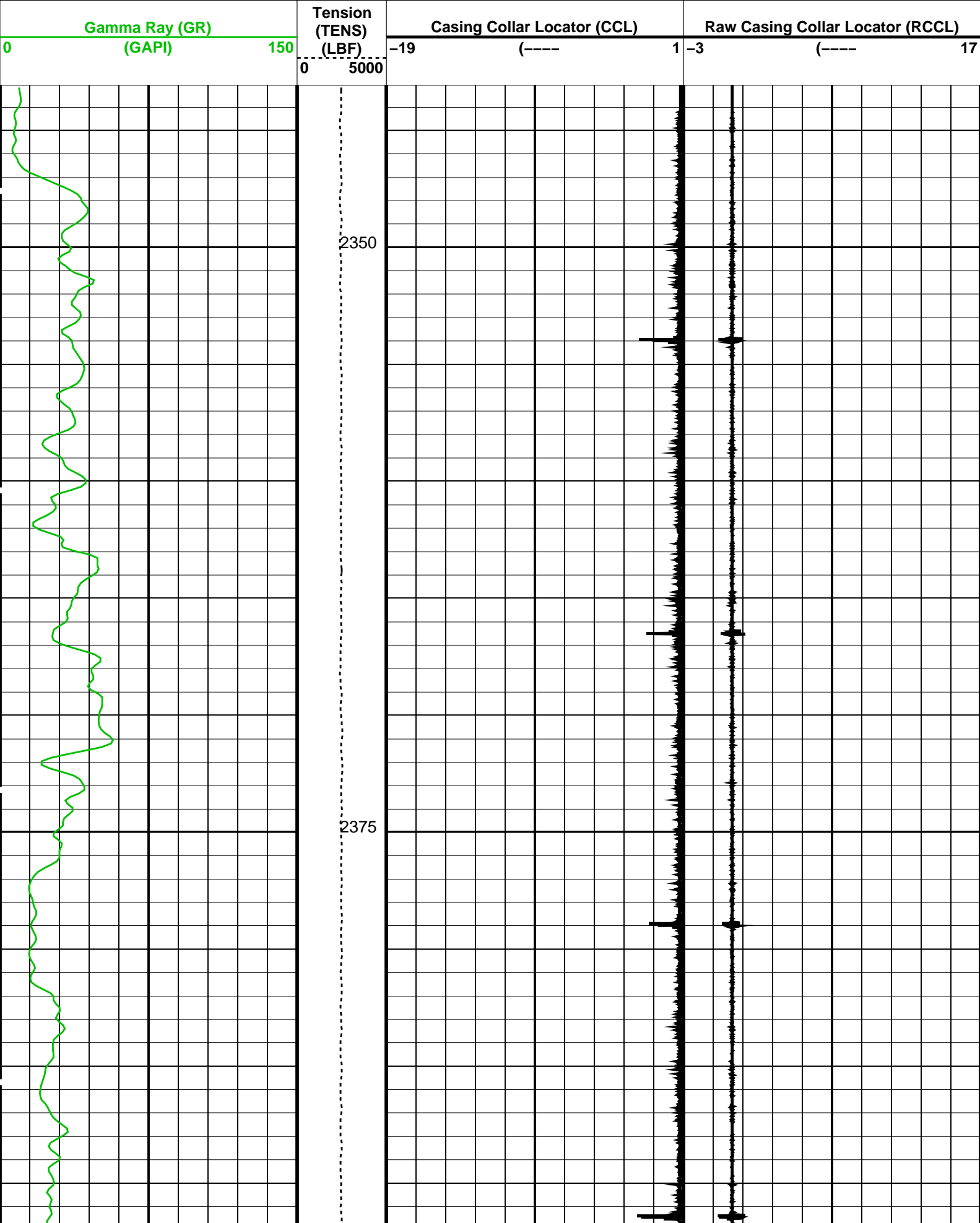
05-Sep-2008 05:41

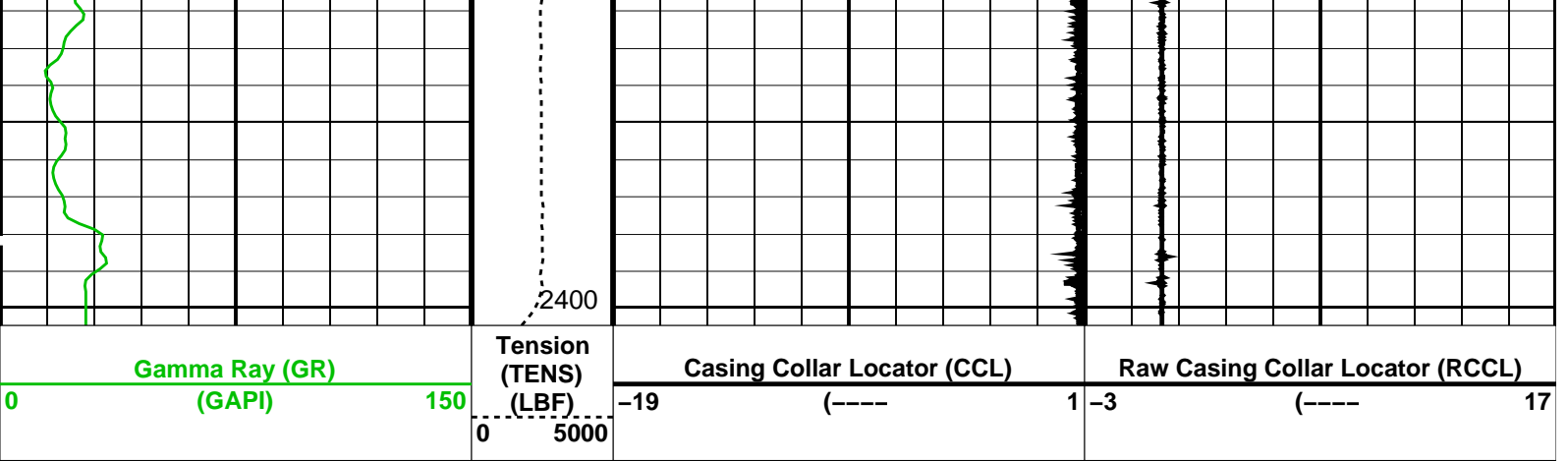
OP System Version: 16C0-147

MCM

PIP SUMMARY

Time Mark Every 60 S





PIP SUMMARY

Time Mark Every 60 S

Format: CCLLog Vertical Scale: 1:200

Graphics File Created: 05-Sep-2008 05:41

OP System Version: 16C0-147
MCM

SHM_GUN 16C0-147 PGGT-D 16C0-147

Output DLIS Files

DEFAULT PERFO_028LUP FN:27 PRODUCER 05-Sep-2008 05:41

Schlumberger

Gun # 1 Shooting Pass
(Fired @ 2564m to 2567.5m MDKB)

MAXIS Field Log

Company: Esso Australia Pty Ltd

Well: Snapper A1a

Output DLIS Files

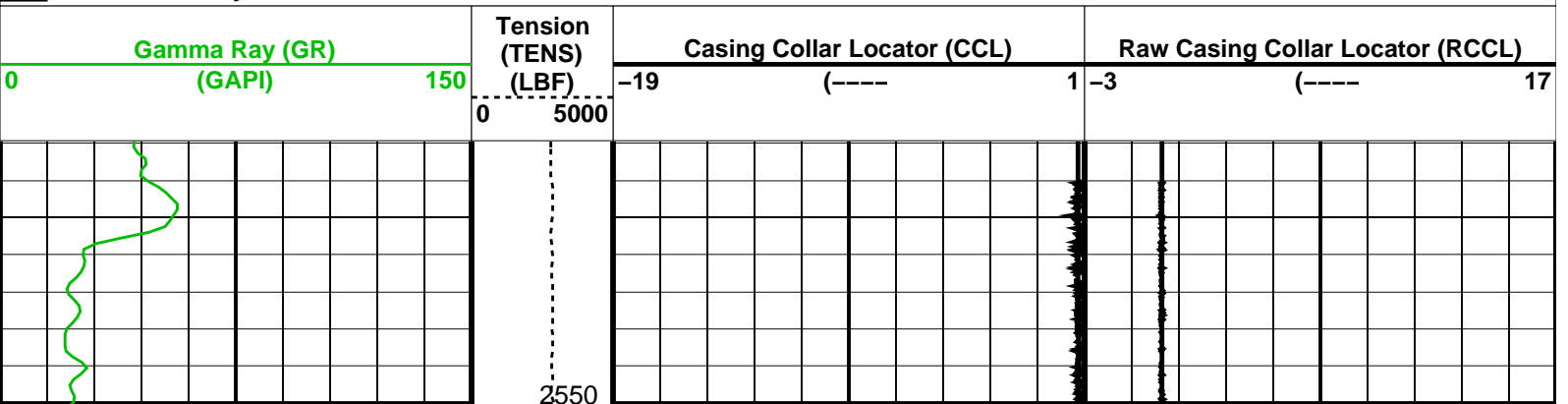
DEFAULT PERFO_020LUP FN:19 PRODUCER 05-Sep-2008 02:06

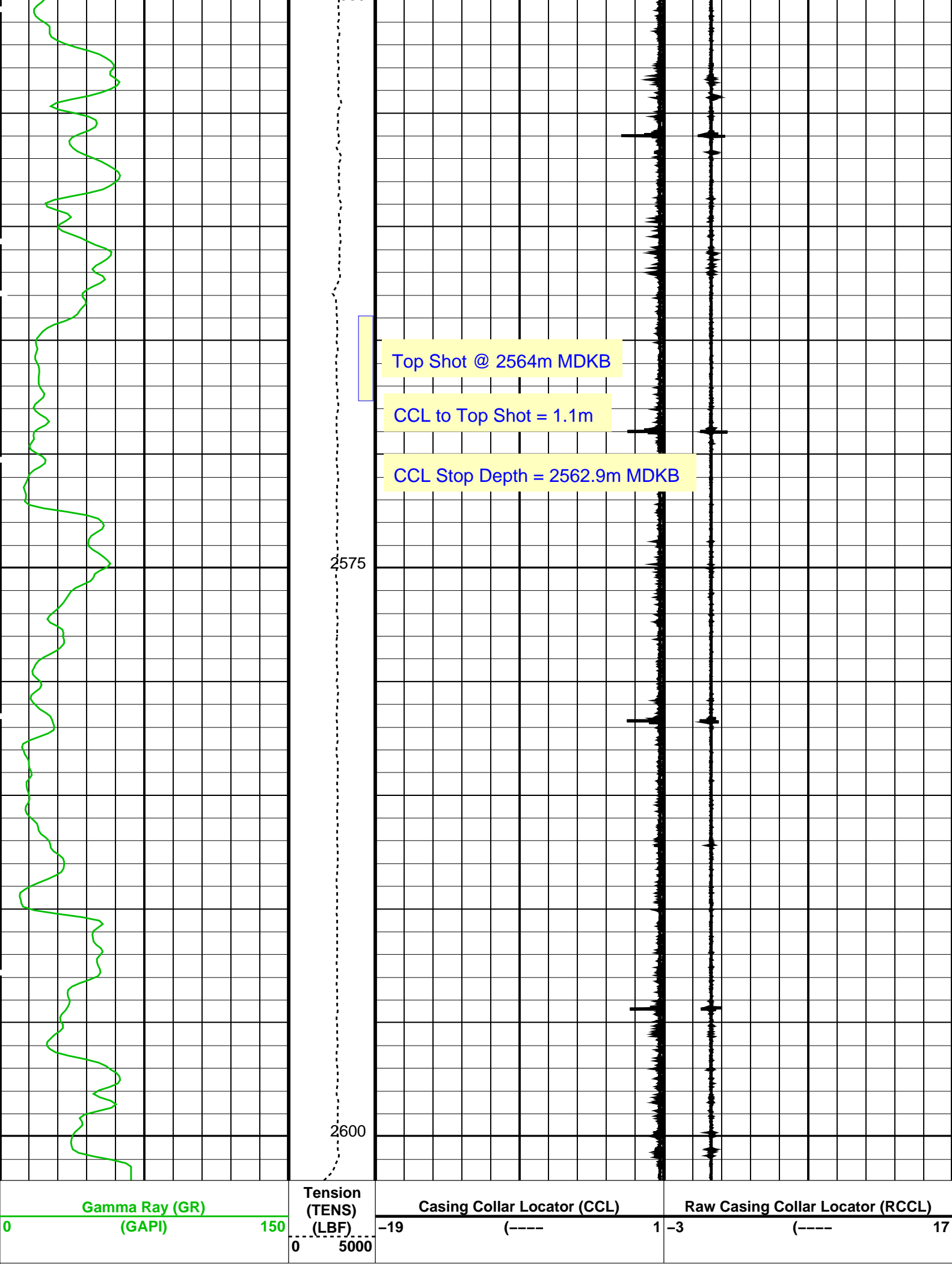
OP System Version: 16C0-147
MCM

SHM_GUN 16C0-147 PGGT-D 16C0-147

PIP SUMMARY

Time Mark Every 60 S





Time Mark Every 60 S

Format: CCLLog

Vertical Scale: 1:200

Graphics File Created: 05-Sep-2008 02:06

OP System Version: 16C0-147

MCM

SHM_GUN16C0-147PGGT-D16C0-147

Output DLIS Files

DEFAULTPERFO_020LUPFN:19PRODUCER05-Sep-2008 02:06

Schlumberger

Gun # 1 Correlation Pass

MAXIS Field Log

Company: Esso Australia Pty Ltd

Well: Snapper A1a

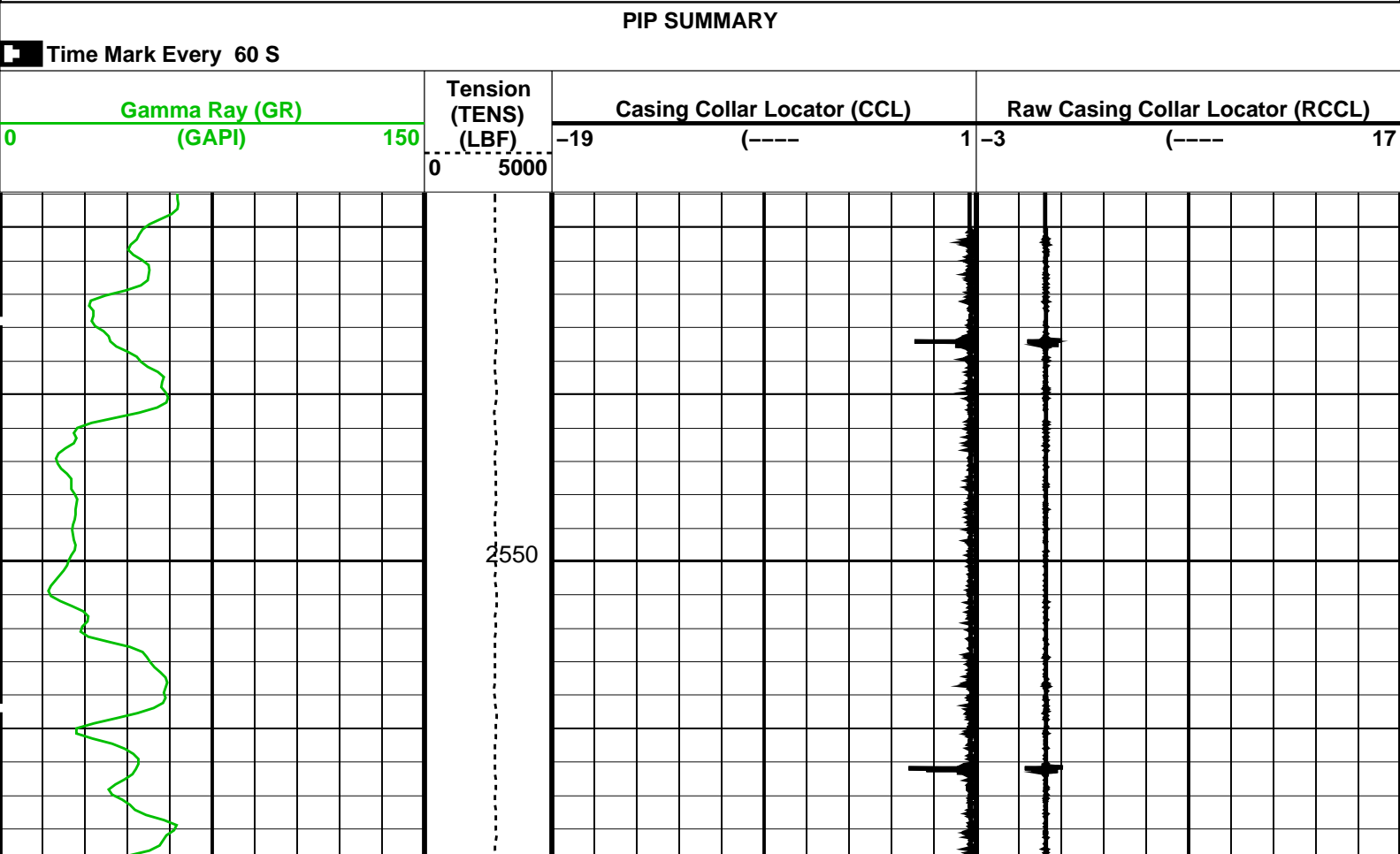
Output DLIS Files

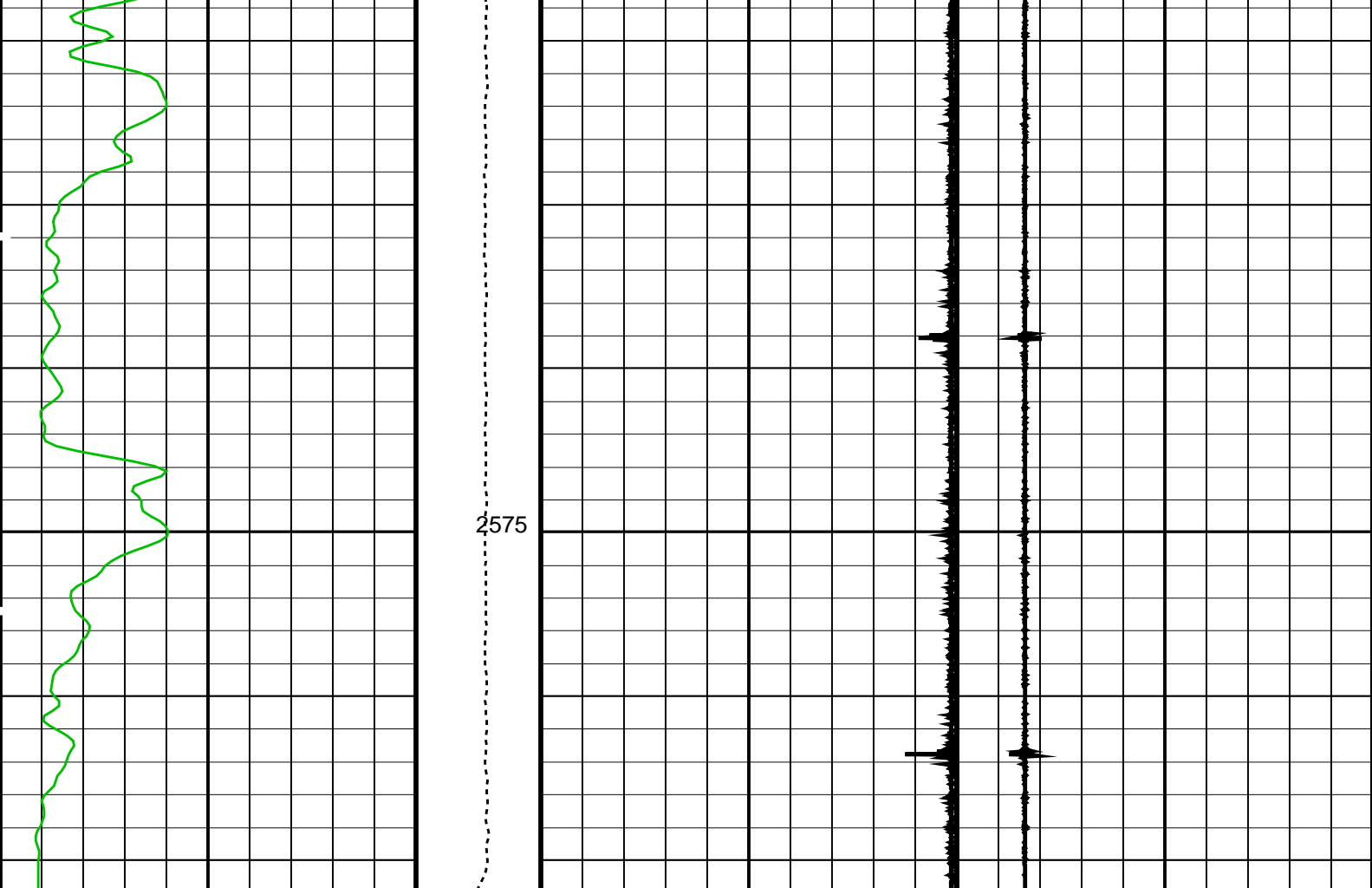
DEFAULTPERFO_019LUPFN:18PRODUCER05-Sep-2008 01:58

OP System Version: 16C0-147

MCM

SHM_GUN16C0-147PGGT-D16C0-147





Gamma Ray (GR) (GAPI)		Tension (TENS) (LBF)	Casing Collar Locator (CCL)	Raw Casing Collar Locator (RCCL)
0	150	0 5000	-19 (----) 1 -3	(----) 17

PIP SUMMARY

Time Mark Every 60 S

Format: CCLLog Vertical Scale: 1:200

Graphics File Created: 05-Sep-2008 01:58

OP System Version: 16C0-147
MCM

SHM_GUN 16C0-147 PGGT-D 16C0-147

Output DLIS Files

DEFAULT PERFO_019LUP FN:18 PRODUCER 05-Sep-2008 01:58

Schlumberger

Junk Basket (6" Gauge Ring)
HUD to 1400m MDKB

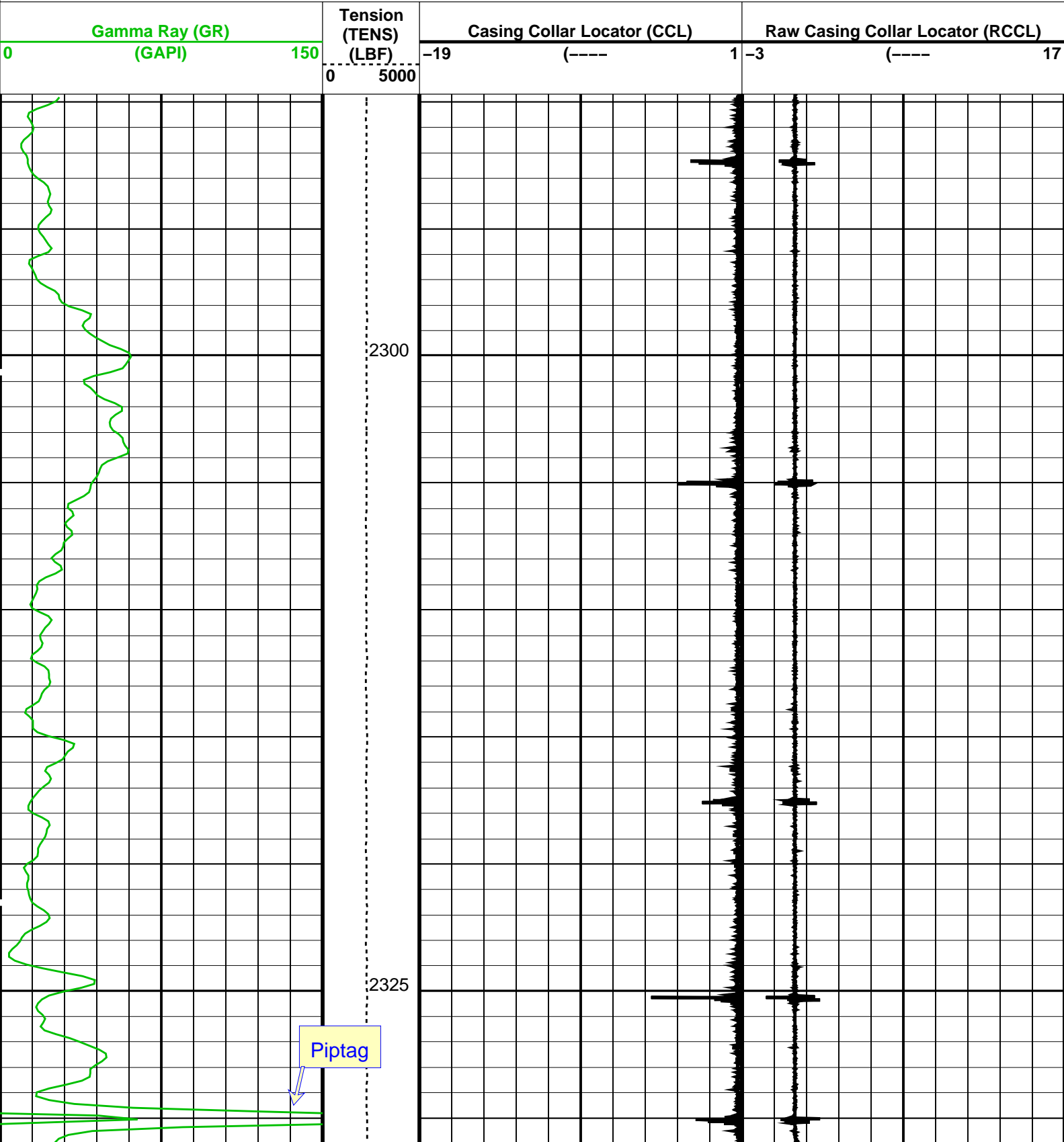
MAXIS Field Log

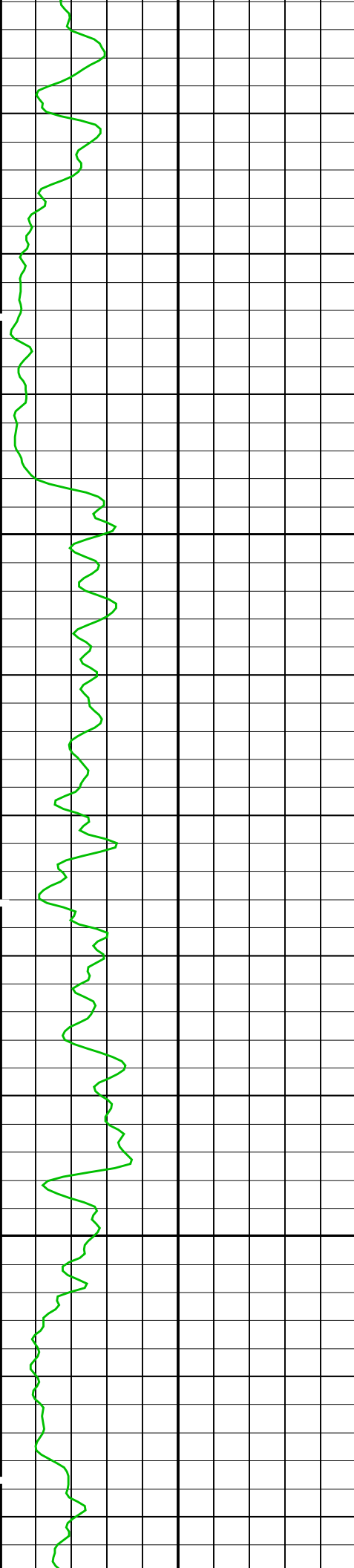
Output DLIS Files

OP System Version: 16C0-147
MCM

PIP SUMMARY

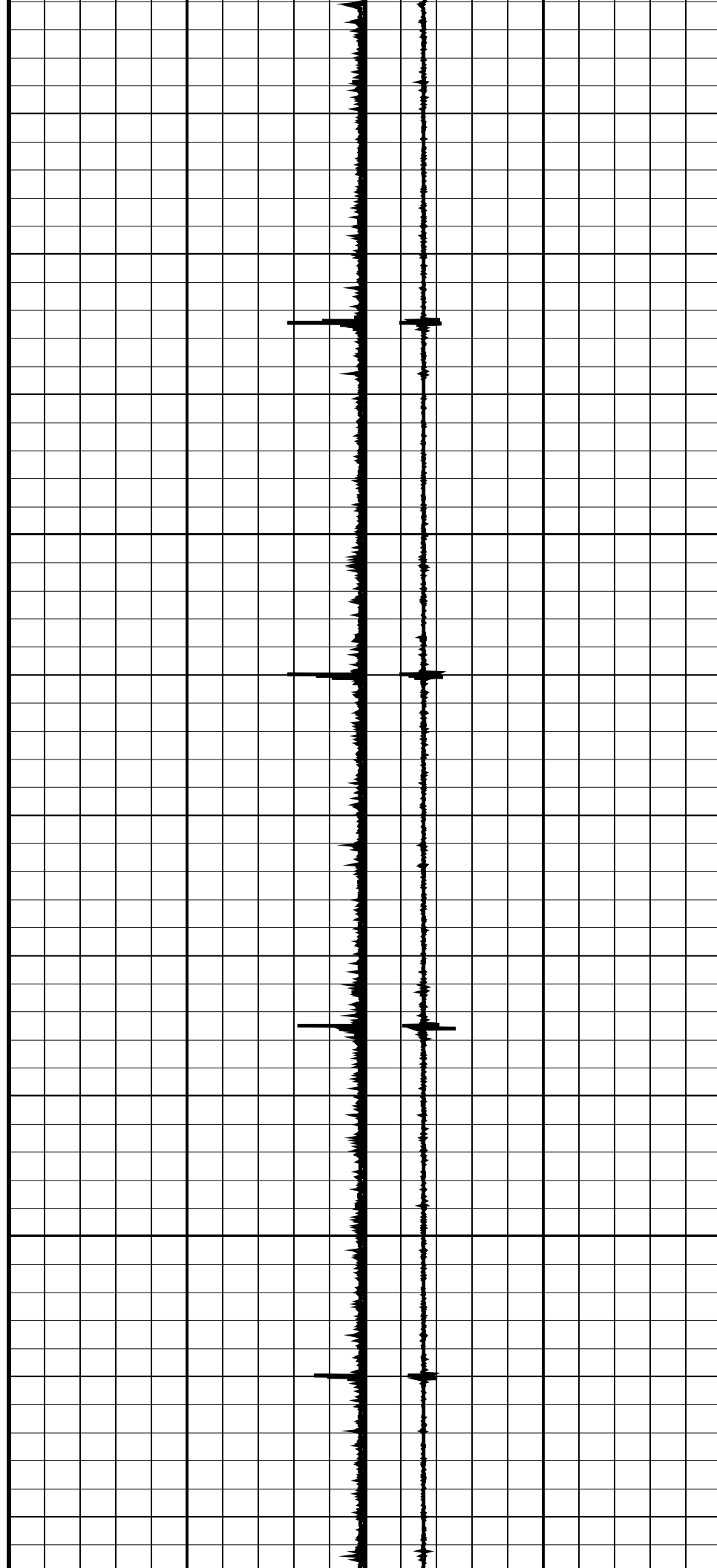
Time Mark Every 60 S

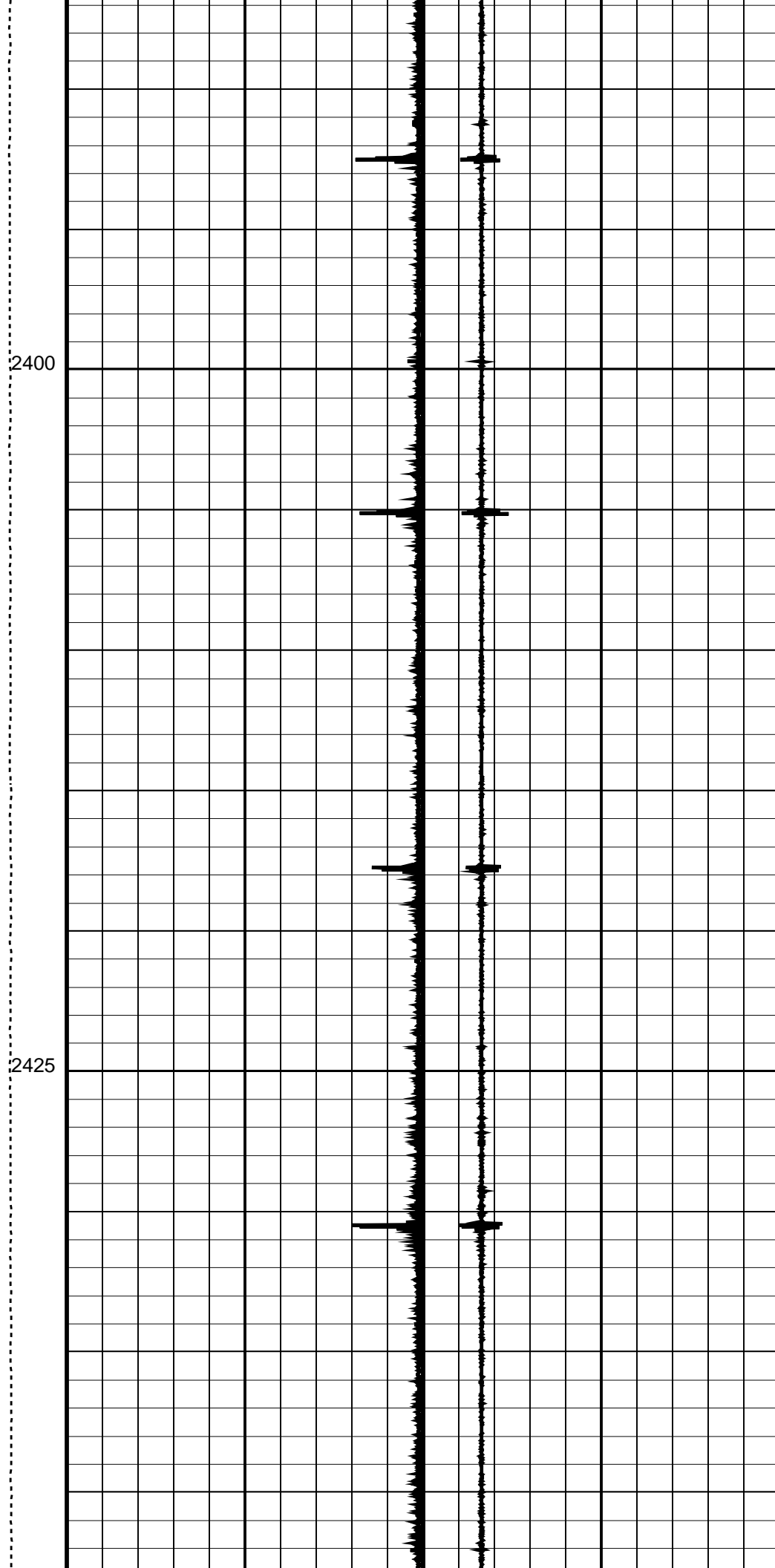
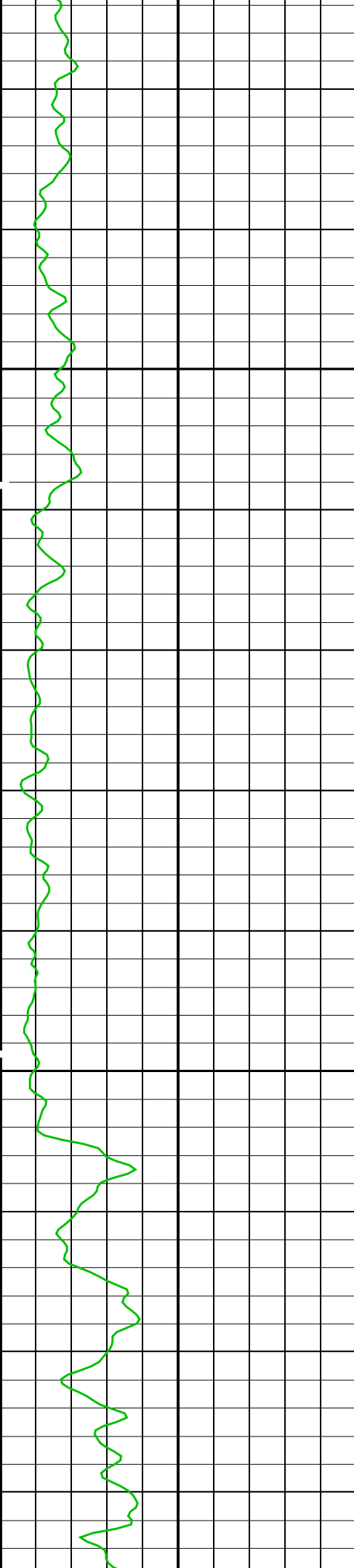


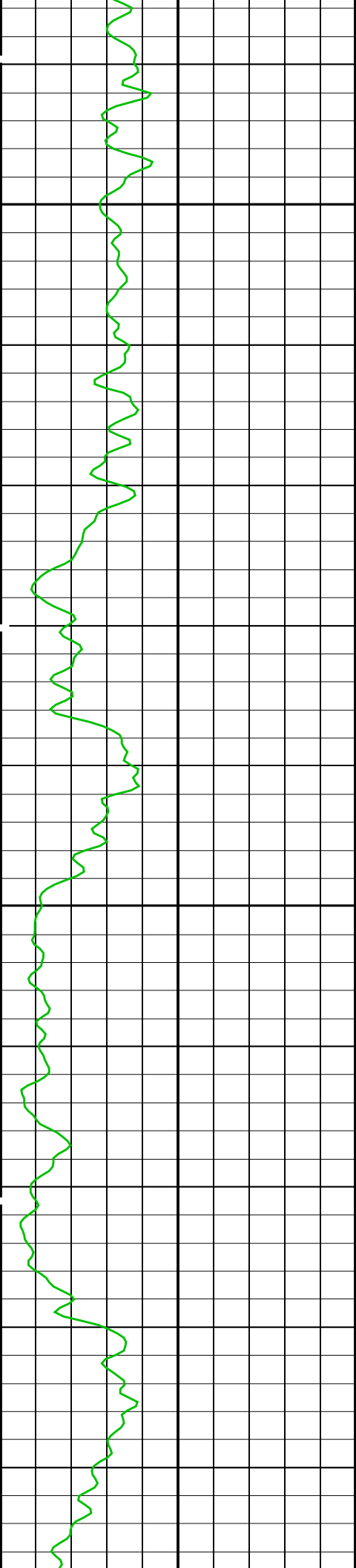


2350

2375

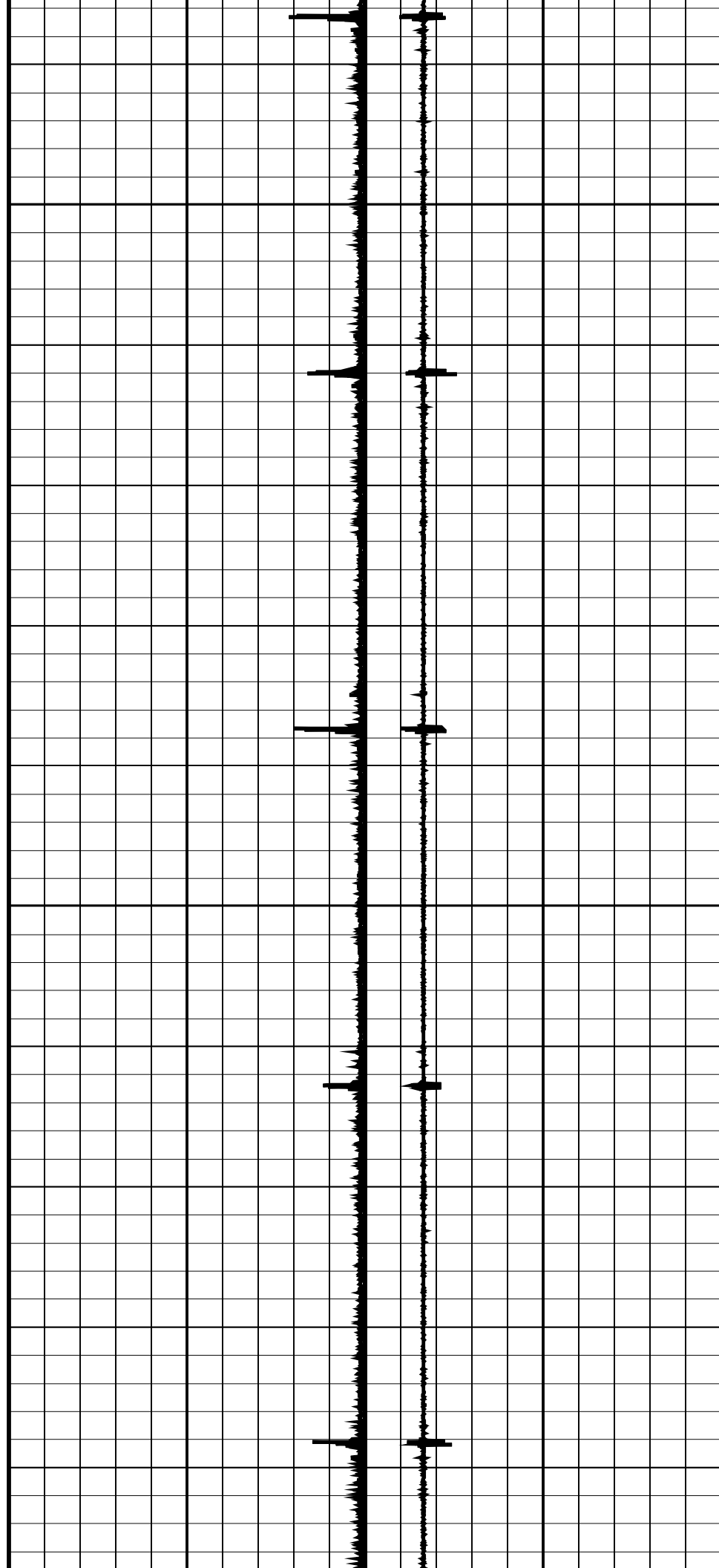


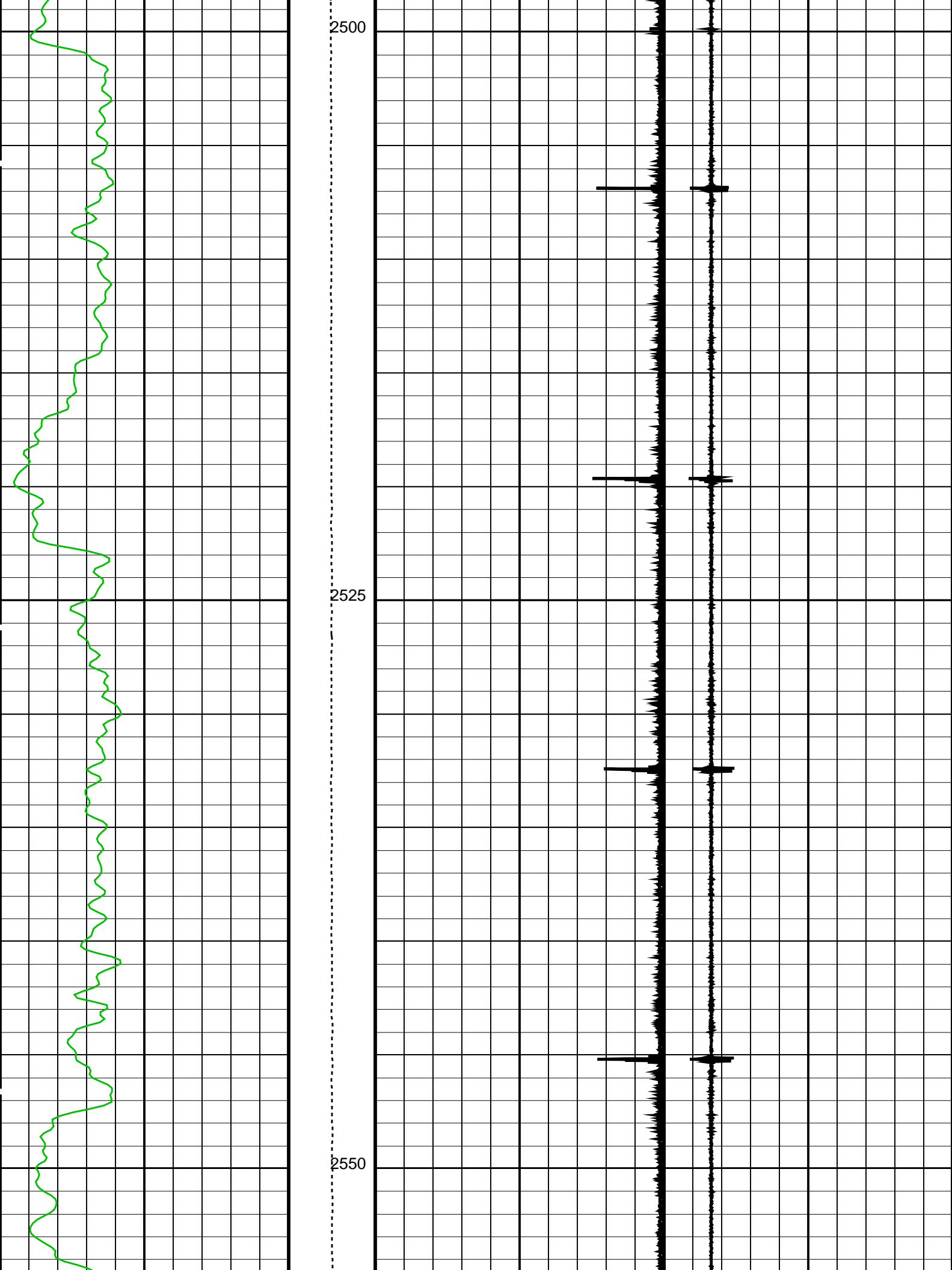


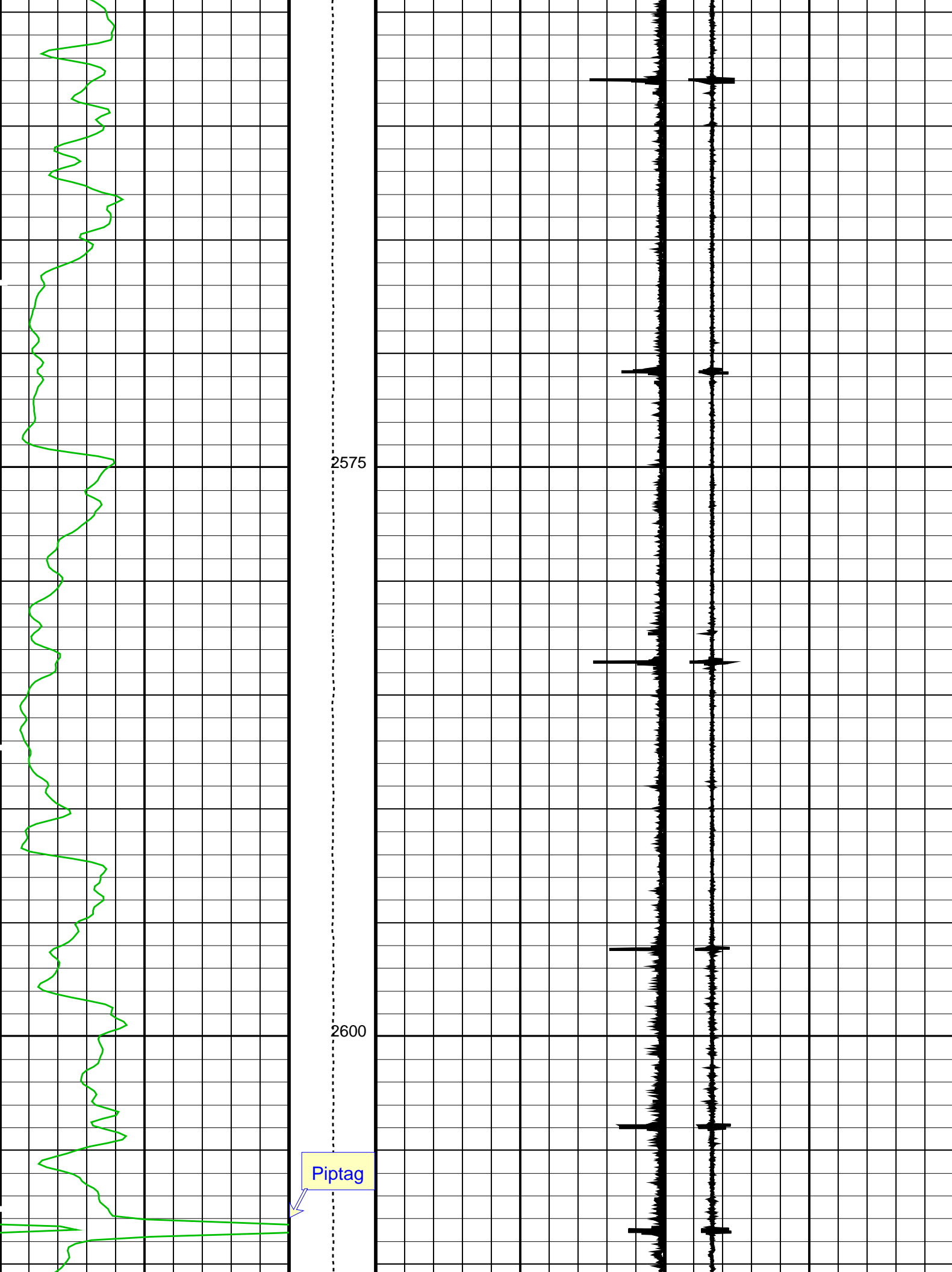


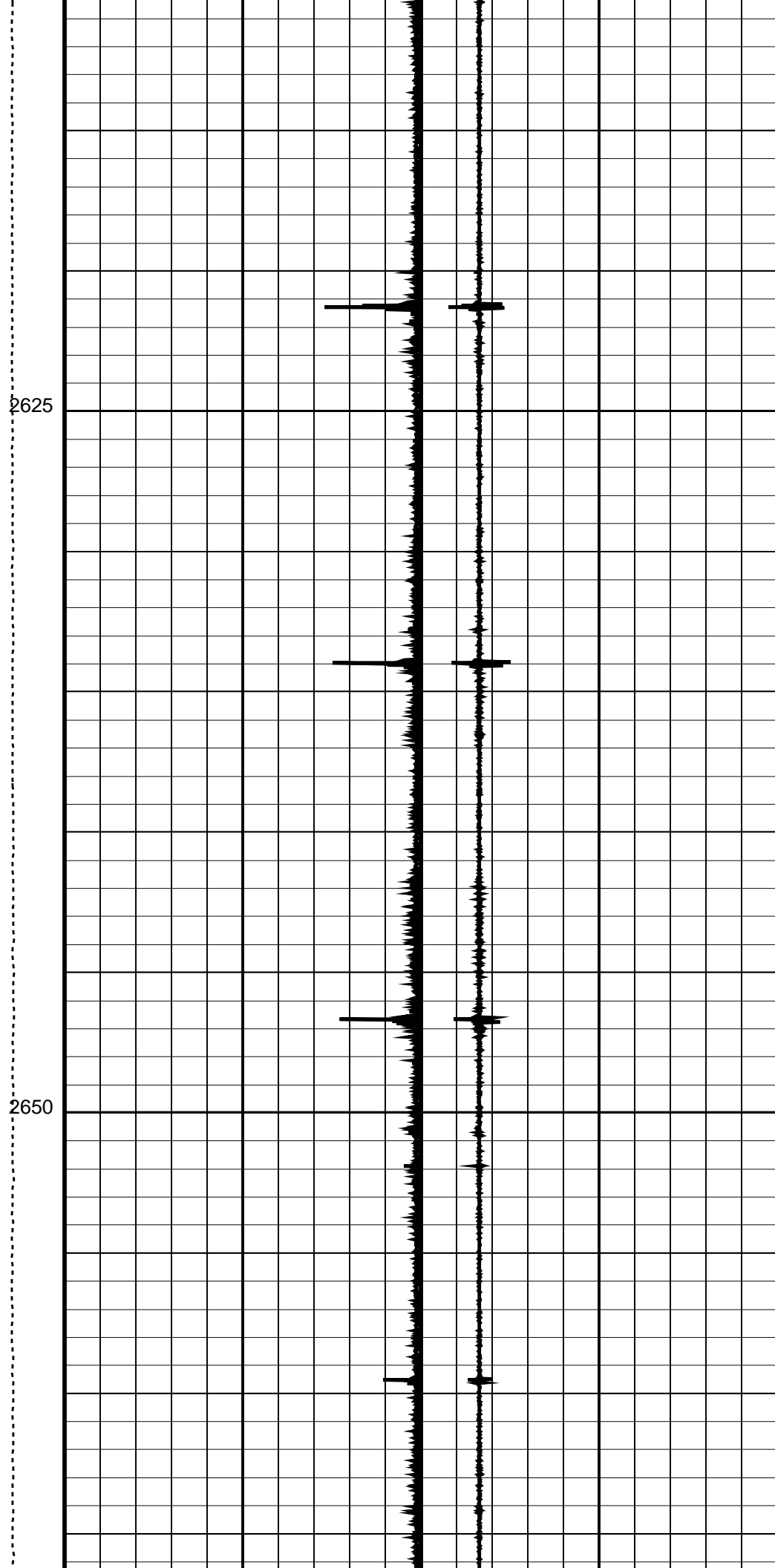
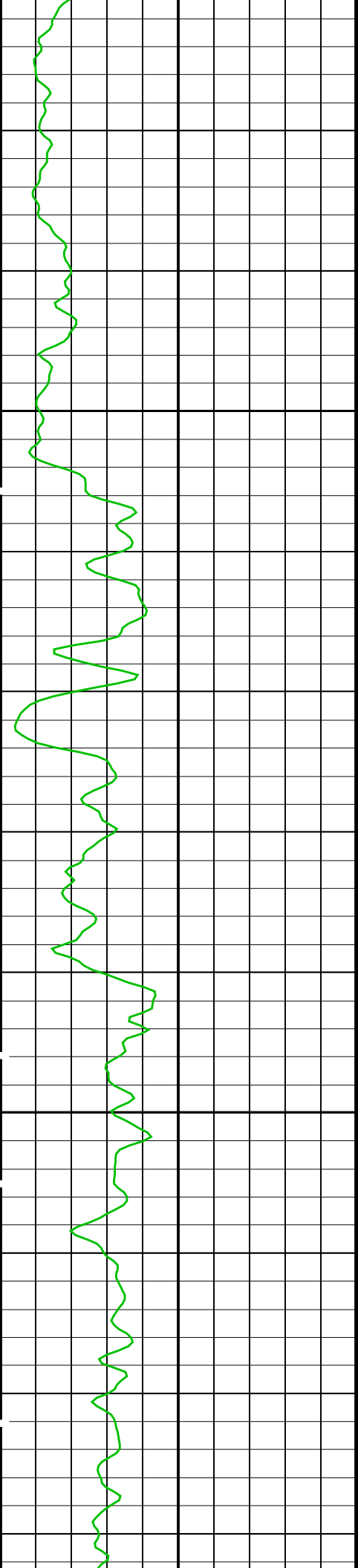
2450

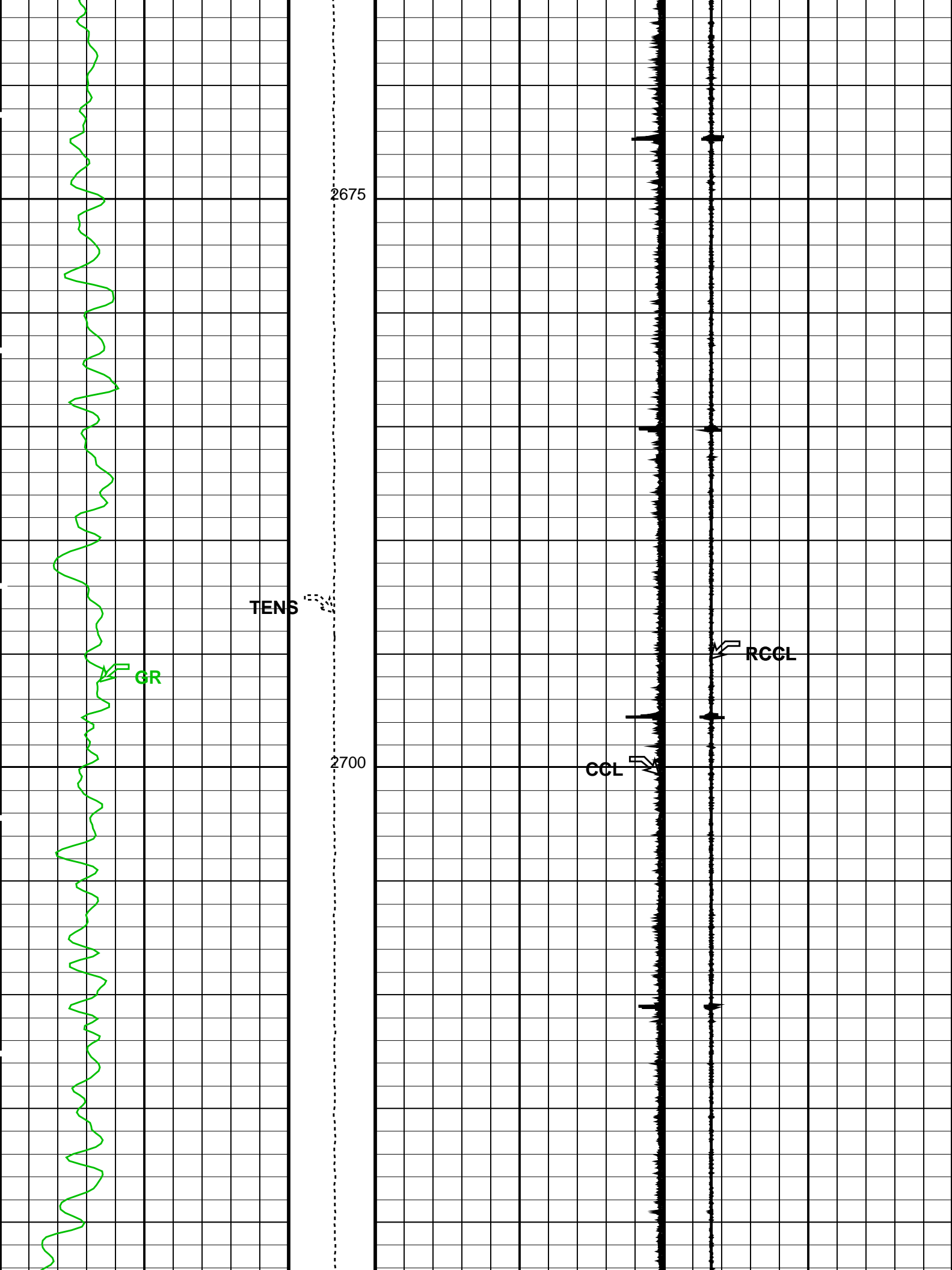
2475

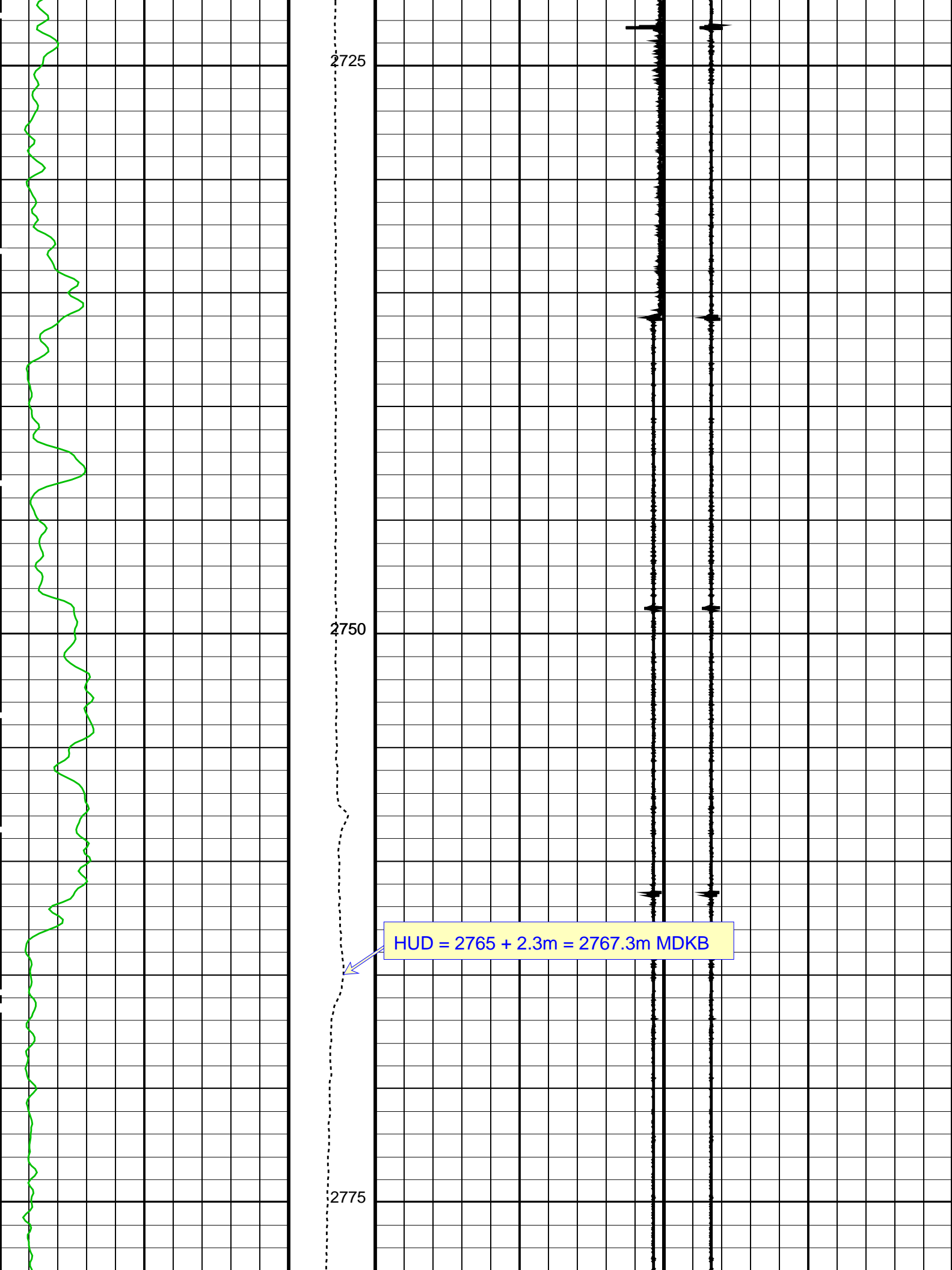












2725

2750

2775

HUD = 2765 + 2.3m = 2767.3m MDKB

