



FORMATION EVALUATION LOG

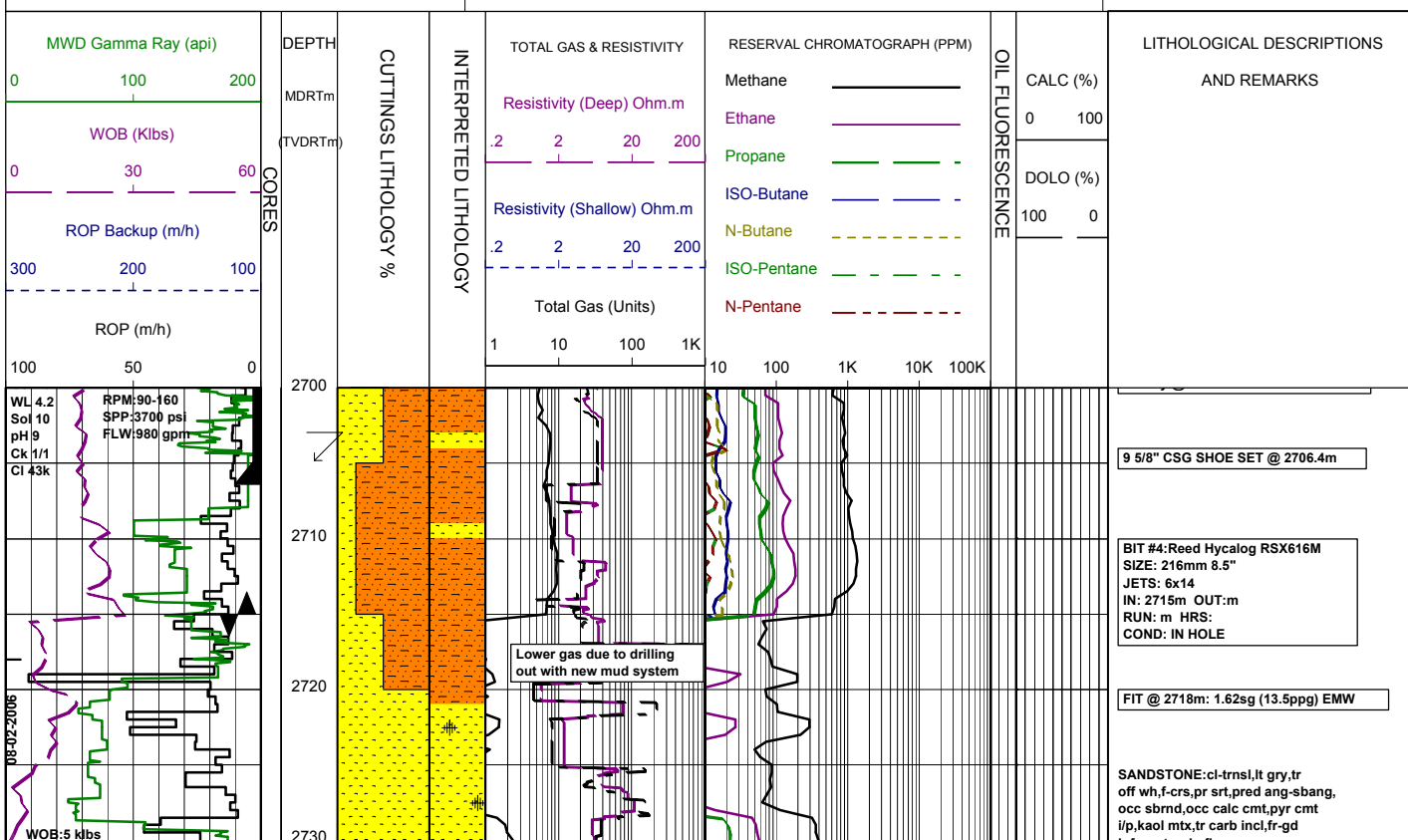
WELL : MANTA 2A

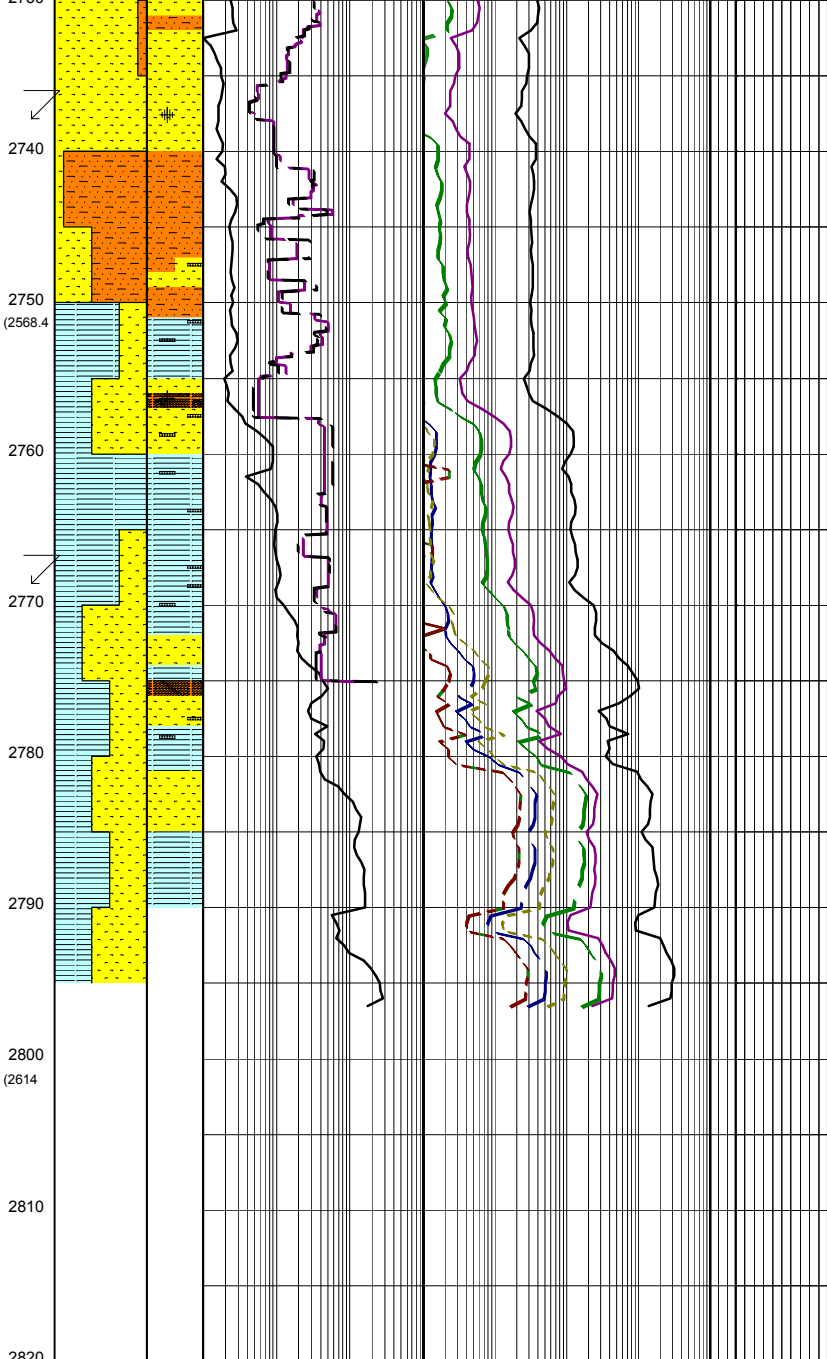
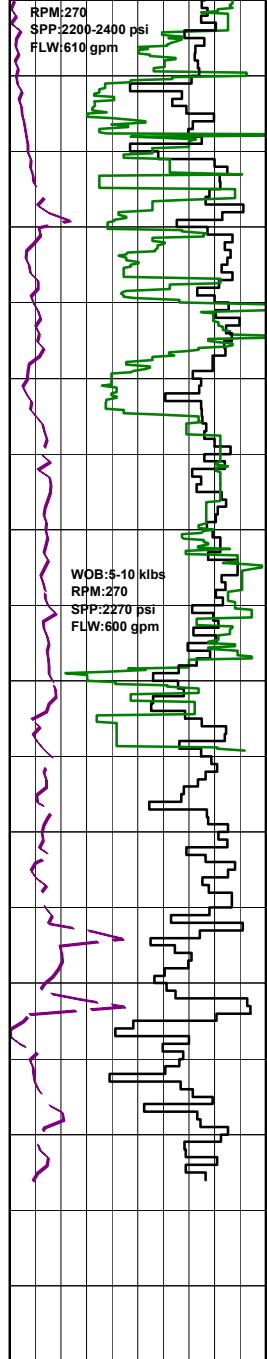


FROM (m): 2700 TO (m): 2820 SCALE: 1/ 500

POSITION		HOLE / CASING INFO	
Country : AUSTRALIA	Latitude : 38°16'39.41"S	17 1/2" Hole to (mMDRT) : 994m	Spud Date : 23-01-2006
Basin : GIPPSLAND	Longitude : 148°42'58.03"E	12 1/4" Hole to (mMDRT) : 2715m	Total Depth Date : XX-XX-2006
Field : MANTA	UTM Co-ord X (m E) : 650106.2	8 1/2" Hole to (mMDRT) : TD DEPTH	Total Depth (mRT) : TD DEPTH
Permit : VIC/L26	UTM Co-ord Y (m N) : 5761989.6	13 3/8" Shoe at (mMDRT) : 984.5m	T.V.D. (mSS MSL) : TD TVD
Well Type : DEVELOPMENT	RT-LAT (m) : 21.5	9 5/8" Shoe at (mMDRT) : 2706.4m	Status : STATUS
Rig Name : OCEAN PATRIOT	RT-Seabed (m) : 155.3	7" Shoe at (mMDRT) :	

ABBREVIATIONS	LITHOLOGY LEGEND	ENGINEERING LEGEND
<p>MW MUD WEIGHT NB NEW BIT</p> <p>FV FUNNEL VISCOSITY RR RERUN BIT</p> <p>PV PLASTIC VISCOSITY CB CORE BIT</p> <p>YP YIELD POINT WOB WEIGHT ON BIT</p> <p>FC FILTER CAKE RPM REVS PER MINUTE</p> <p>SOL SOLIDS FLC FLOW CHECK</p> <p>WL FILTRATE CR CIRCULATE RETURNS</p> <p>SD SAND - % PR POOR RETURNS</p> <p>S SALINITY - PPM NR NO RETURNS</p> <p>RM MUD RESISTIVITY BG BACKGROUND GAS</p> <p>RMF MUD FILTRATE TG TRIP GAS</p> <p>C CARBIDE TEST STG SHORT TRIP GAS</p> <p>LAT LOGGED AFTER TRIP CG CONNECTION GAS</p> <p>DS DEVIATION SURVEY SG SWAB GAS</p> <p>SVG SURVEY GAS</p>	<p>Claystone (Blue horizontal lines)</p> <p>Siltstone (Orange horizontal lines)</p> <p>Arg. Siltstone (White with dots)</p> <p>Fine SST (Yellow with dots)</p> <p>Medium SST (Yellow with larger dots)</p> <p>Coarse SST (Yellow with larger dots and lines)</p> <p>Marl (Green wavy lines)</p> <p>Calc Claystone (Green horizontal lines)</p> <p>Limestone (Blue vertical lines)</p> <p>Dolomite (Blue diagonal lines)</p> <p>Coal (Black horizontal lines)</p> <p>Volcanics (Orange diagonal lines)</p> <p>Lithic Fragment (White with X)</p> <p>Foraminifera (White with circles)</p> <p>Fossils (White with irregular shapes)</p> <p>Bryozoa (White with vertical lines)</p> <p>Brachiopoda (White with triangles)</p> <p>Cement (White with squares)</p> <p>Sponges (White with circles)</p> <p>Glauconite (White with G)</p> <p>Pyrite (White with crosses)</p> <p>Iron Minerals (White with Fe)</p> <p>Mica (White with M)</p> <p>Carb Fragments (White with horizontal lines)</p>	<p>Shoe (Triangle with lines)</p> <p>Bit Trip (Triangle with lines)</p> <p>Deviation survey (Zigzag line)</p> <p>DST (Square with lines)</p> <p>TEST (Square with X)</p> <p>Sidewall Core (Triangle with lines)</p> <p>Core (Vertical bar)</p> <p>Wiper Trip (Triangle with lines)</p> <p>RFT (Arrow)</p> <p>FIT (Arrow)</p> <p>Mud loss (Zigzag line)</p> <p>Mud gain (Zigzag line)</p>





inf por, tr min fluor.

Survey @ 2737.7m: 23.49° 91.4Az

SILTSTONE: it-med gry, brn/gry, com arg, occ aren, occ carb spks & lam i/p, micmic, frm-sft, loc hd, sbblky.

SILTSTONE: med-dk gry, occ brn/gry, arg, occ aren, abdt carb spks & lam i/p grad to carb SLTST, micmic, frm-pred sft, sbblky.

COAL (Tr): blk-gry blk, dll-ea, tr sbvit, slty grad to carb frags, sft-brit, sbblky-sbfiss, unevn-ang.

CARBONACEOUS CLAYSTONE: med-dk gry, occ brn/gry, arg, occ aren, abdt carb SLTST, COAL frags i/p, tr micmic, pred sft, occ frm, amor-sbblky.

Survey @ 2766.2m: 25.67° 91.8Az

SANDSTONE: clr, trns, opq, tr lt gry, tr off wh, f-med, com crs-v crs, mod pr srt, ang-sbrnd, wk sil cmt, tr wh arg mtb, tr gry slty mtb, rr pyr mtb, tr carb incls, v pr vis por, pr inf por, no fluor.

SILTY CLAYSTONE: it brn, gry-brn, med lt gry, arg, tr aren, com carb spks & flks, tr carb frags, vsft amor-ph-sbfiss.

SANDSTONE: off wh, trns, pl gry, vf-f, mod-v crs lse, pr srt, sbrnd, off wh arg-lt gry mtb, carb spks, mnr pyr, mod hd-fri aggs, gen lse, ti vis & fr inf por, no fluor.

