

Madfish-1

Apache Energy Ltd

Realtime LWD Data - Field Data

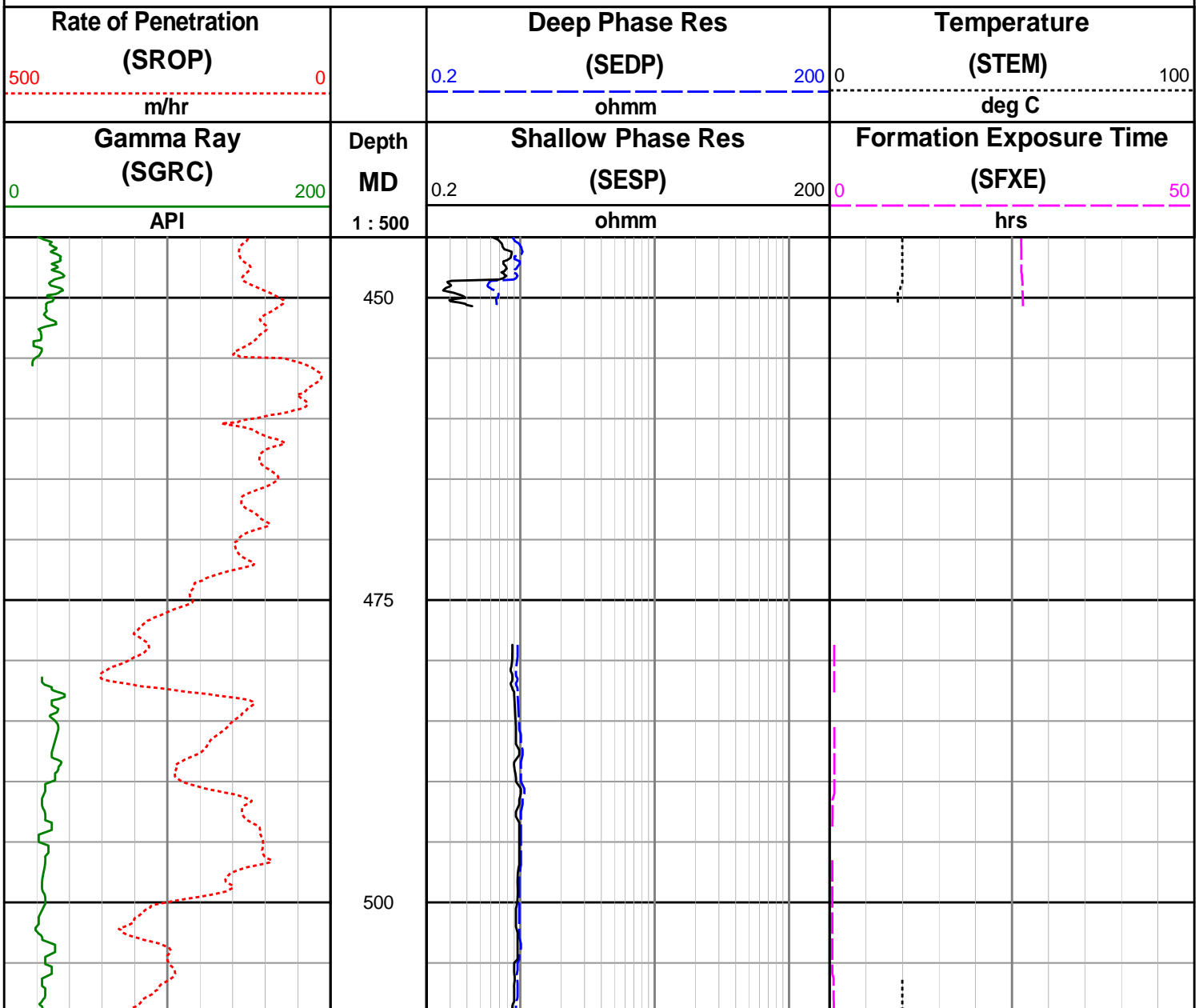
406mm Hole Section

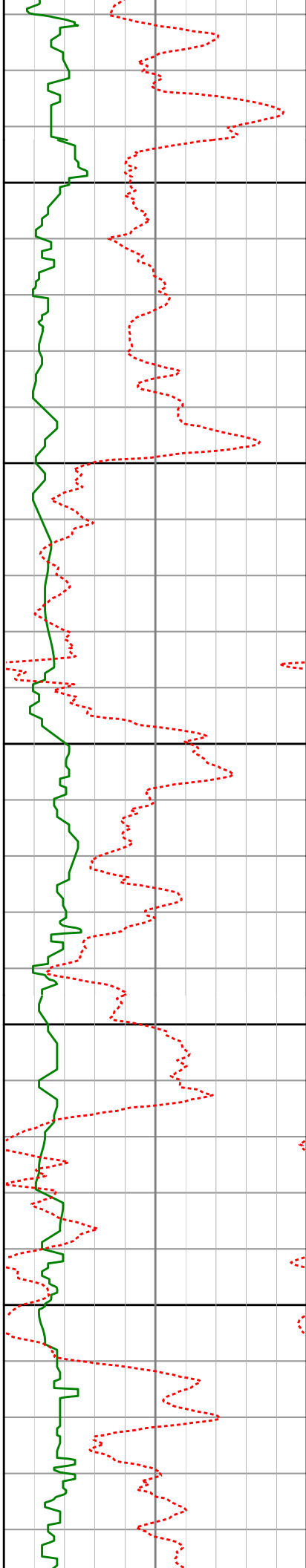
Environmental Parameters:

Hole Size = 406mm, Tool Size = 203mm
 Mud Type = Sea Water
 MW = 1.03 sg

Remarks:

1. Gamma Ray have been environmentally corrected using the listed parameters where appropriate.
2. Gap in realtime data from 450 - 480 mMDRT due to insufficient flowrate for detection.
3. Gaps in realtime data at 975 - 995 mMDRT, and from 1140 mMDRT onwards due to poor detection attributable to downhole drilling noise.





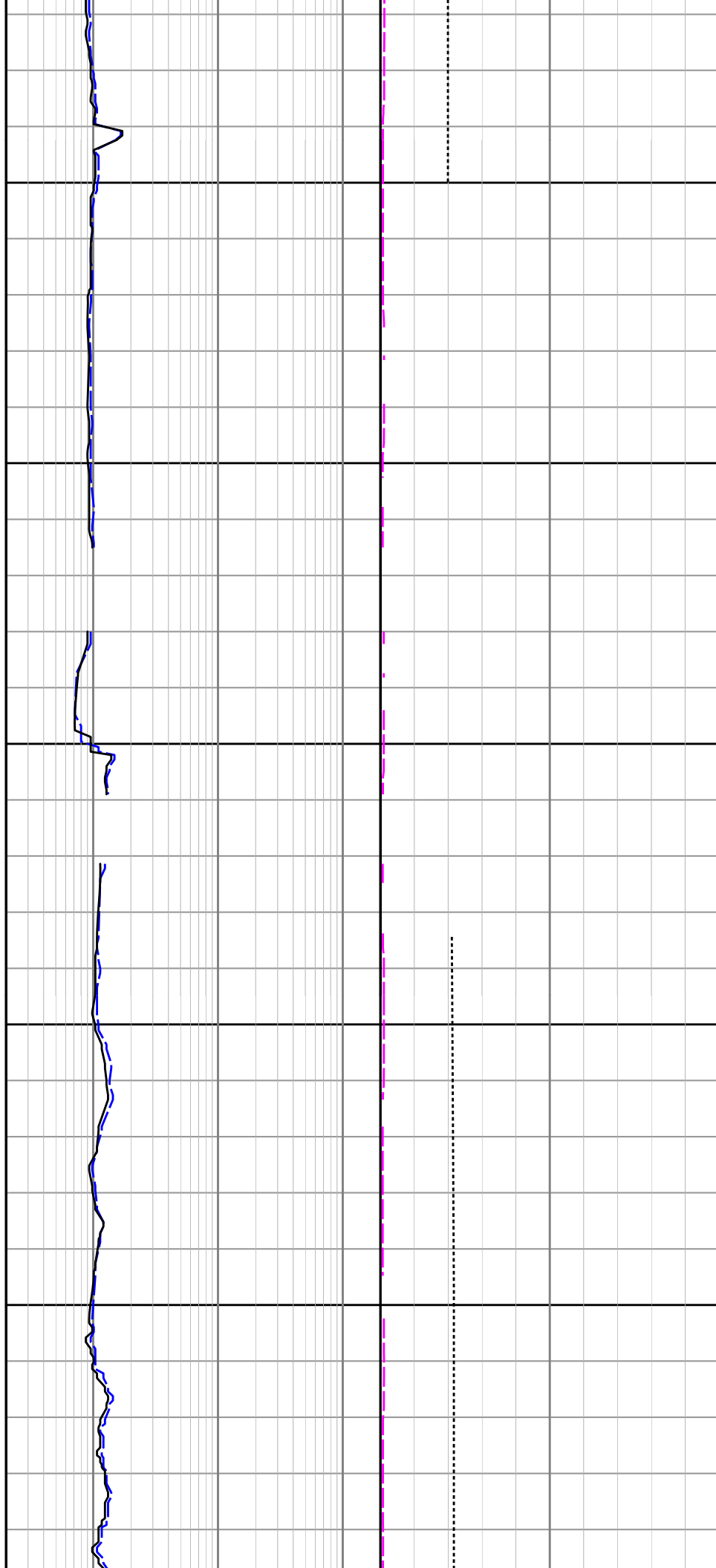
525

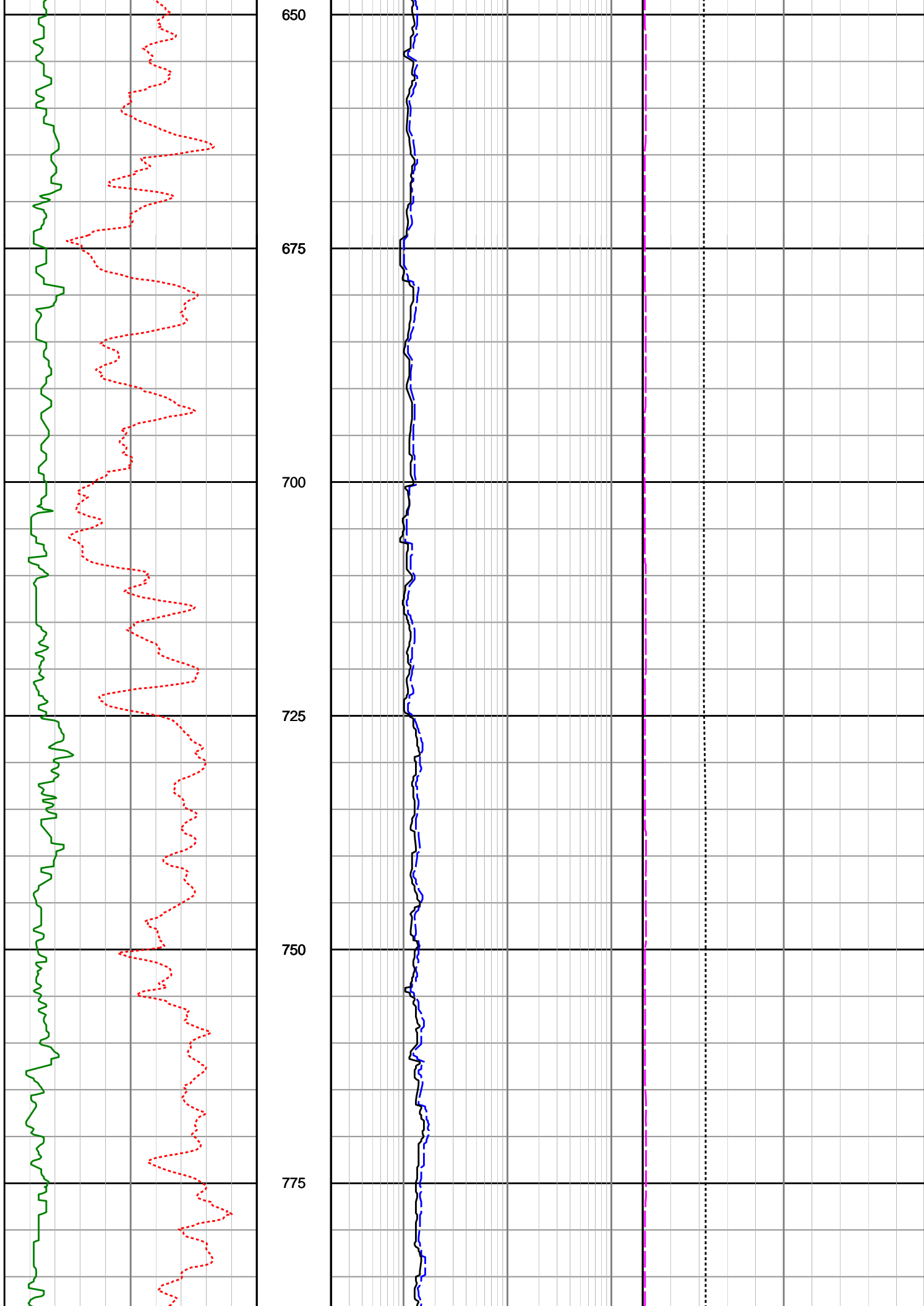
550

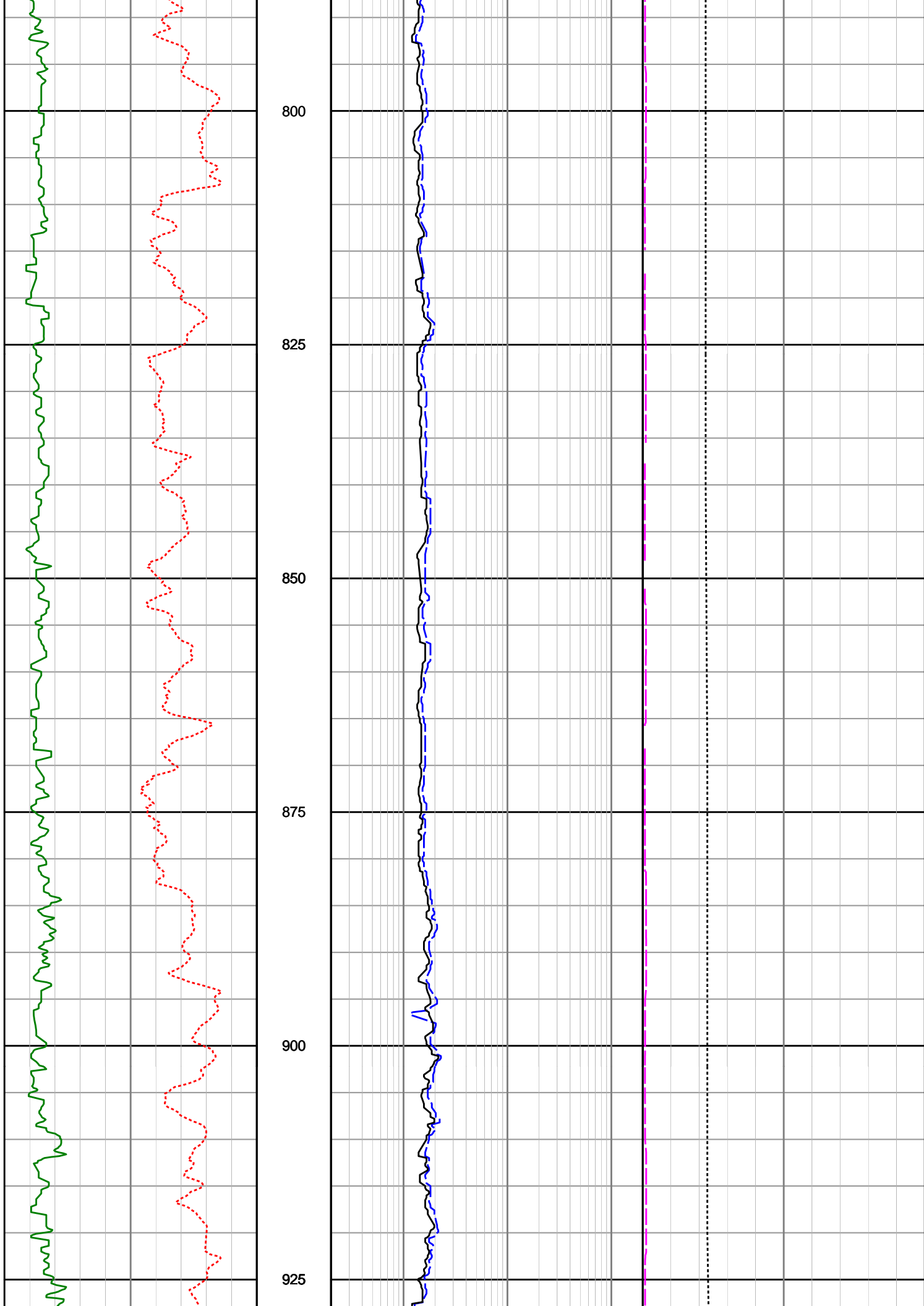
575

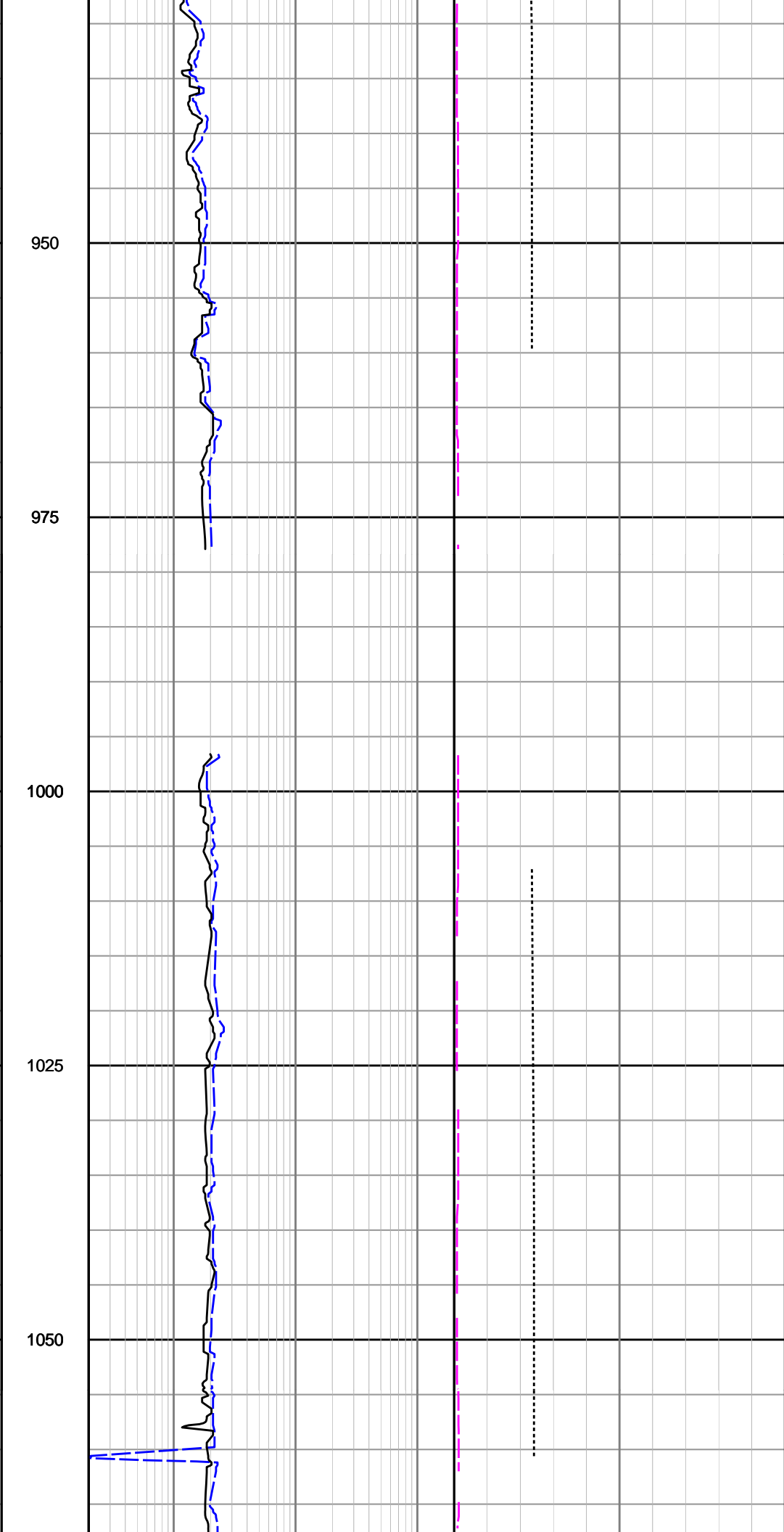
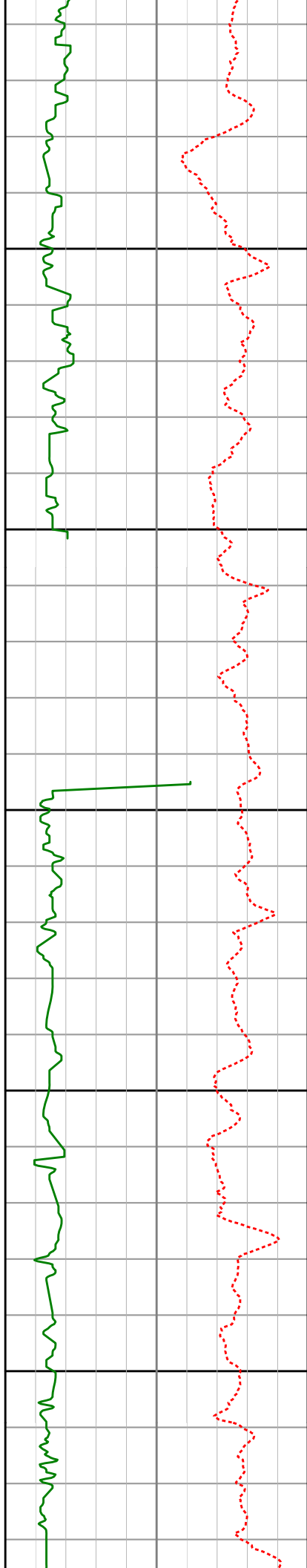
600

625









1075

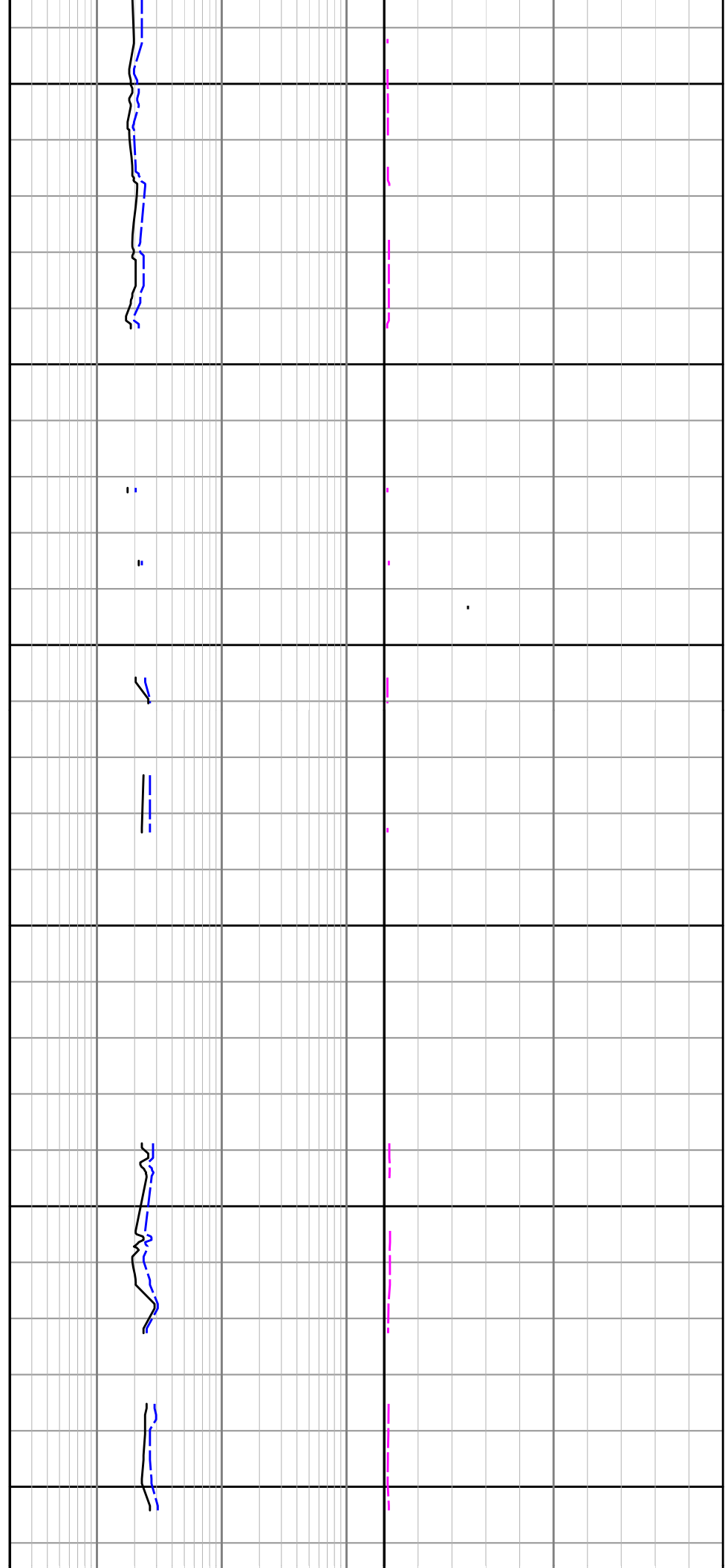
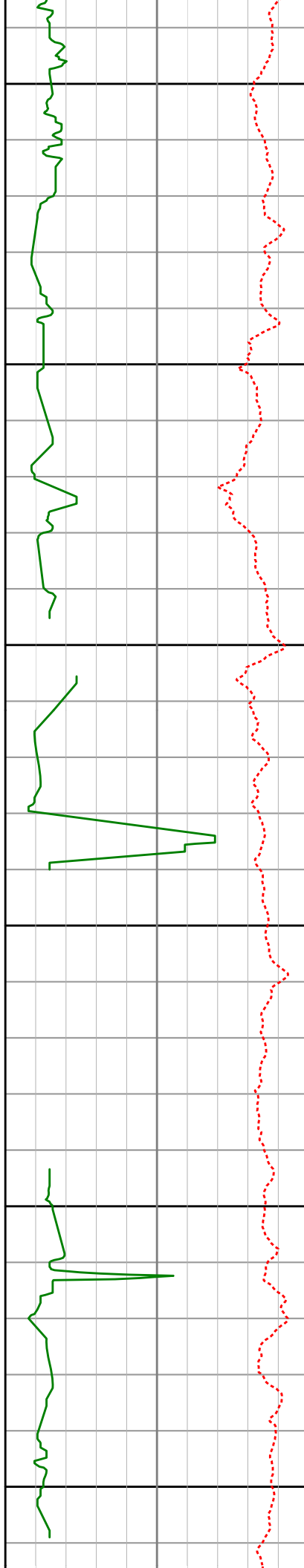
1100

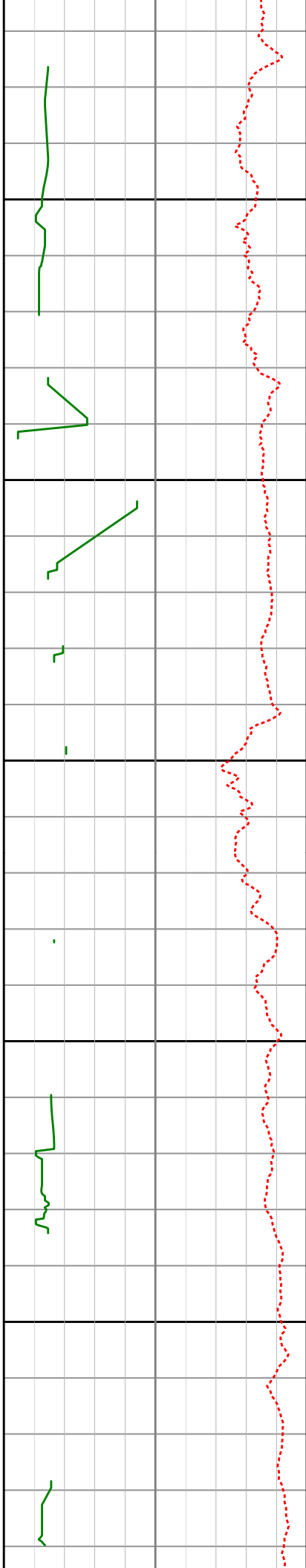
1125

1150

1175

1200





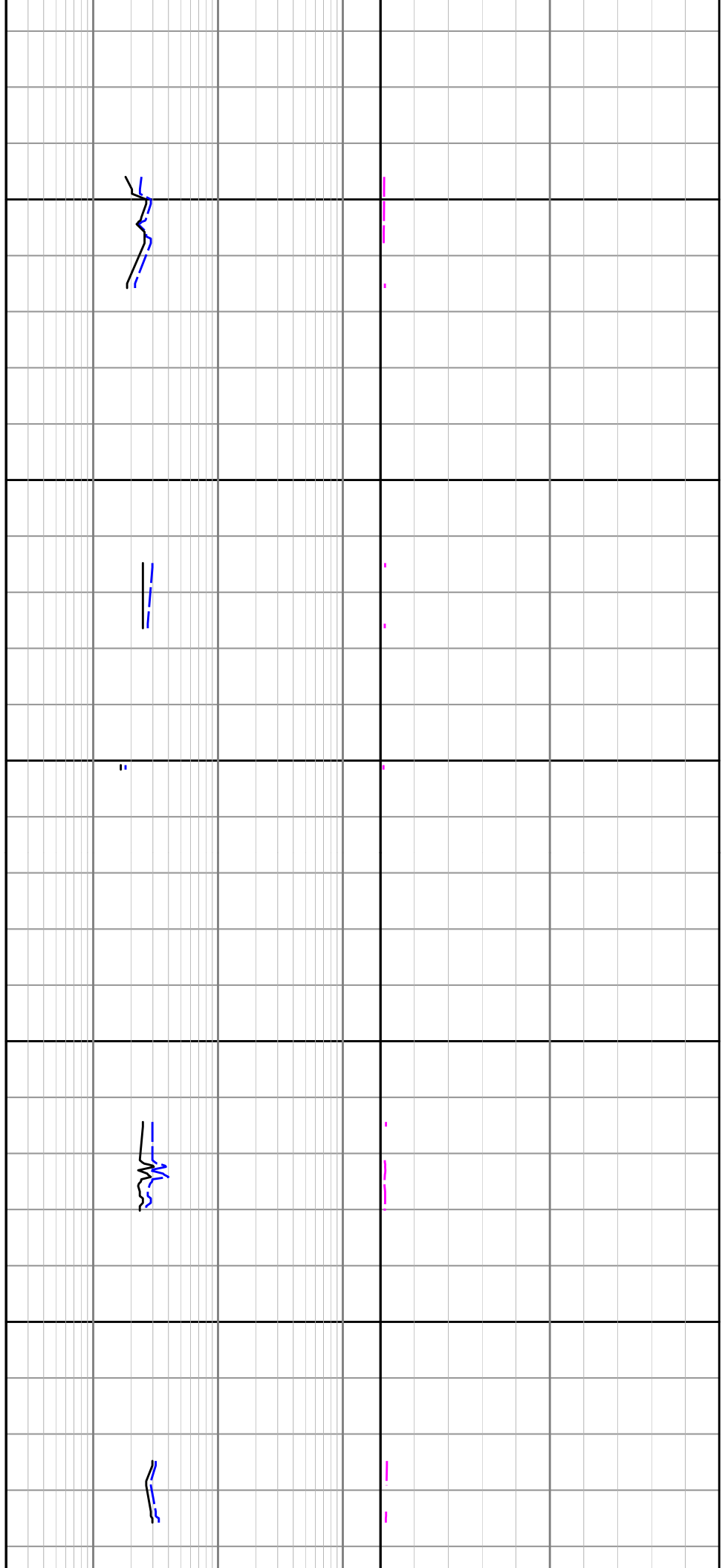
1225

1250

1275

1300

1325



1350

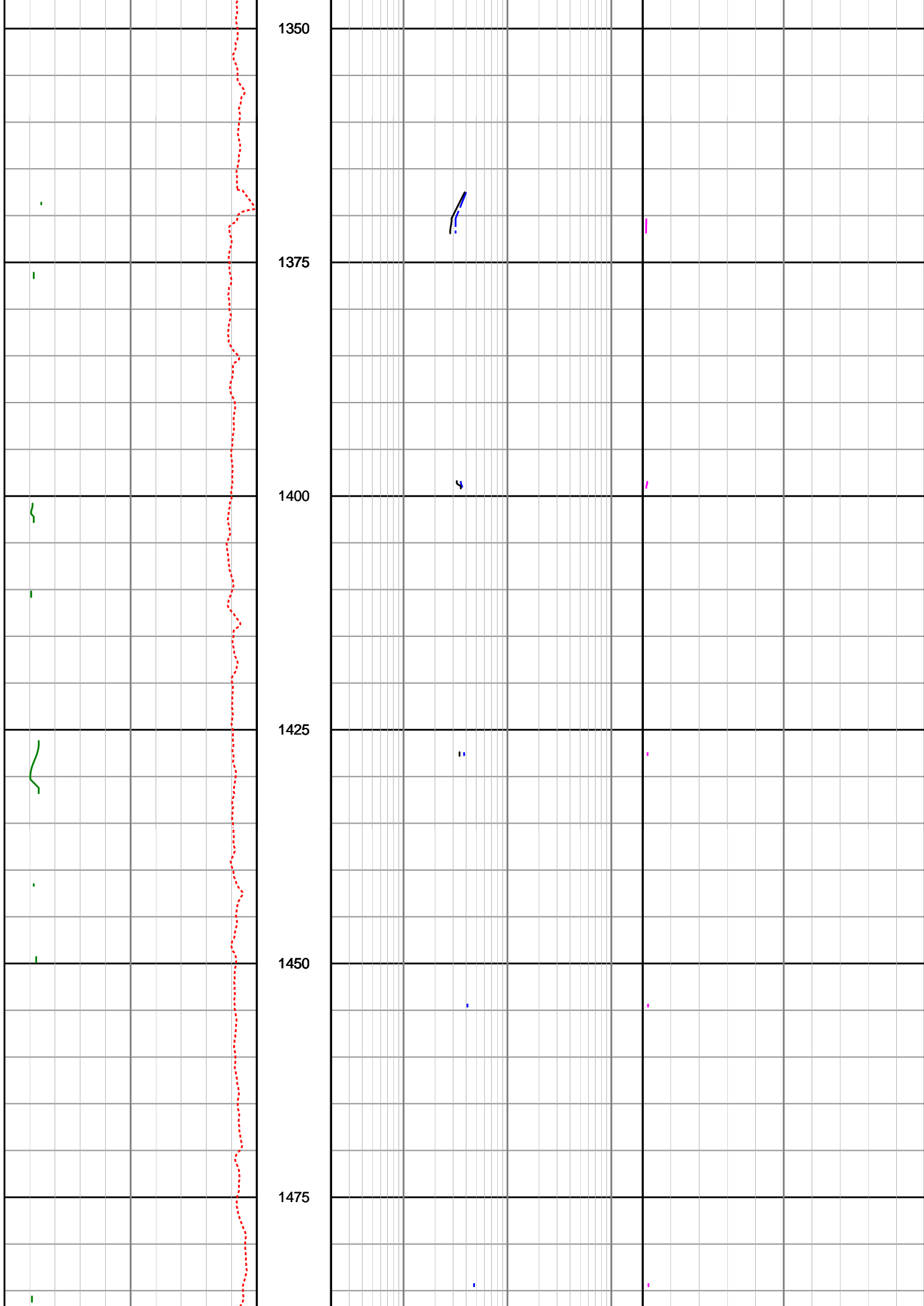
1375

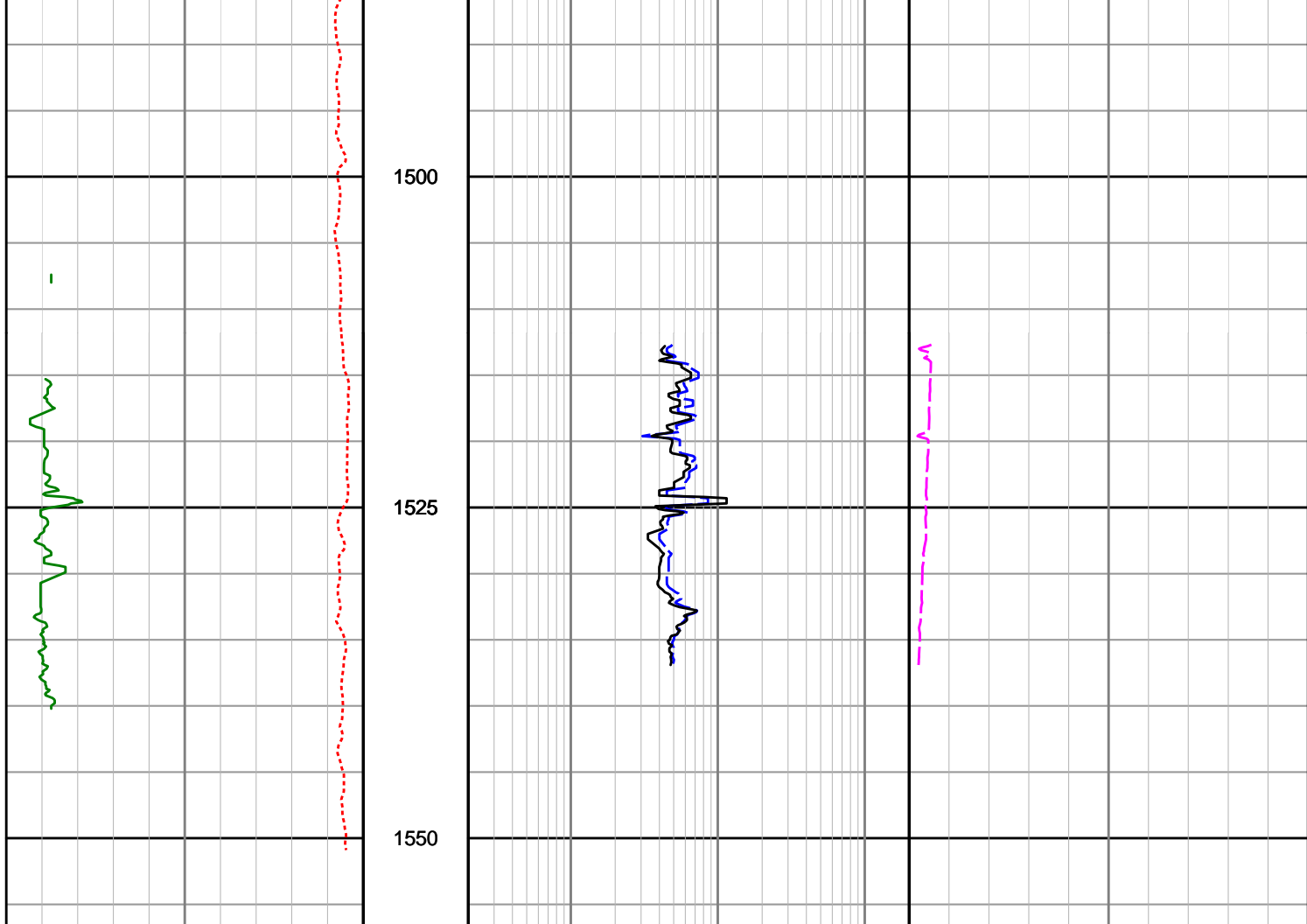
1400

1425

1450

1475





<p>Gamma Ray (SGRC)</p> <p>0 200</p> <p>API</p>	<p>Depth MD</p> <p>1 : 500</p>	<p>Shallow Phase Res (SESP)</p> <p>0.2 200</p> <p>ohmm</p>	<p>Formation Exposure Time (SFXE)</p> <p>0 50</p> <p>hrs</p>
<p>Rate of Penetration (SROP)</p> <p>500 0</p> <p>m/hr</p>		<p>Deep Phase Res (SEDP)</p> <p>0.2 200</p> <p>ohmm</p>	<p>Temperature (STEM)</p> <p>0 100</p> <p>deg C</p>