

Madfish-1

Apache Energy Ltd

Realtime LWD Data - Field Data

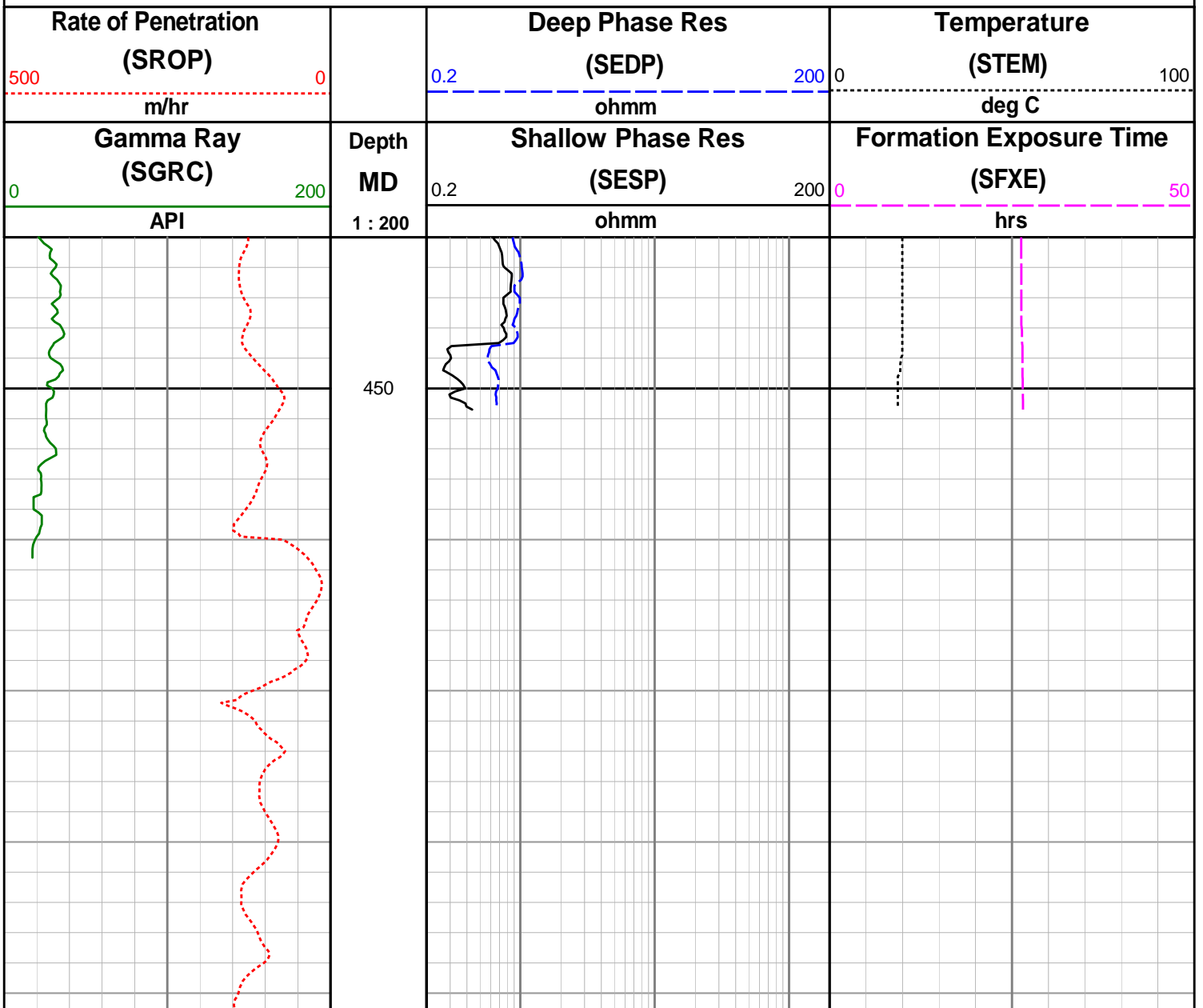
406mm Hole Section

Environmental Parameters:

Hole Size = 406mm, Tool Size = 203mm
 Mud Type = Sea Water
 MW = 1.03 sg

Remarks:

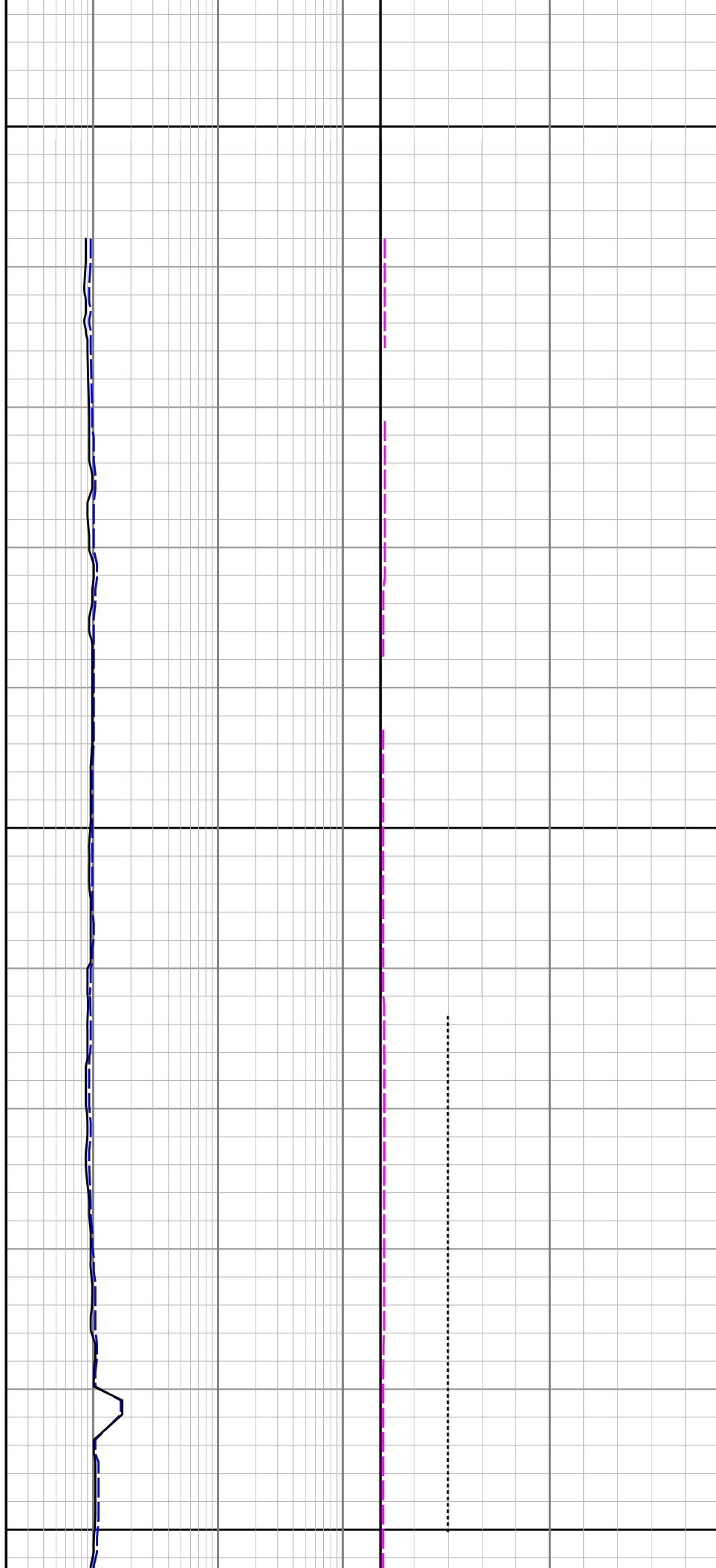
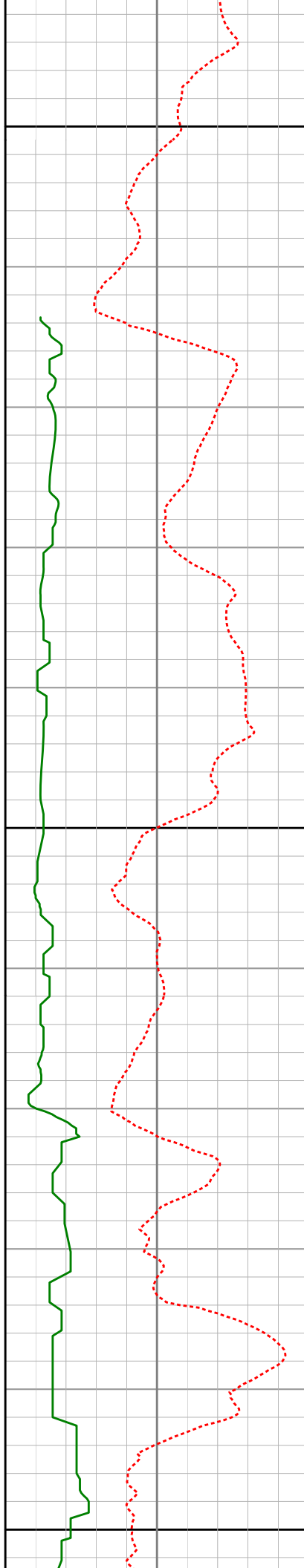
1. Gamma Ray have been environmentally corrected using the listed parameters where appropriate.
2. Gap in realtime data from 450 - 480 mMDRT due to insufficient flowrate for detection.
3. Gaps in realtime data at 975 - 995 mMDRT, and from 1140 mMDRT onwards due to poor detection attributable to downhole drilling noise.

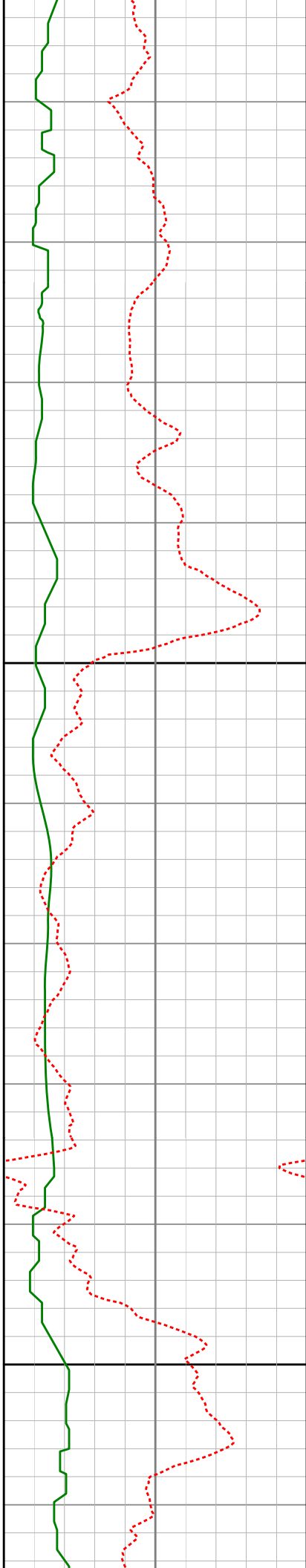


475

500

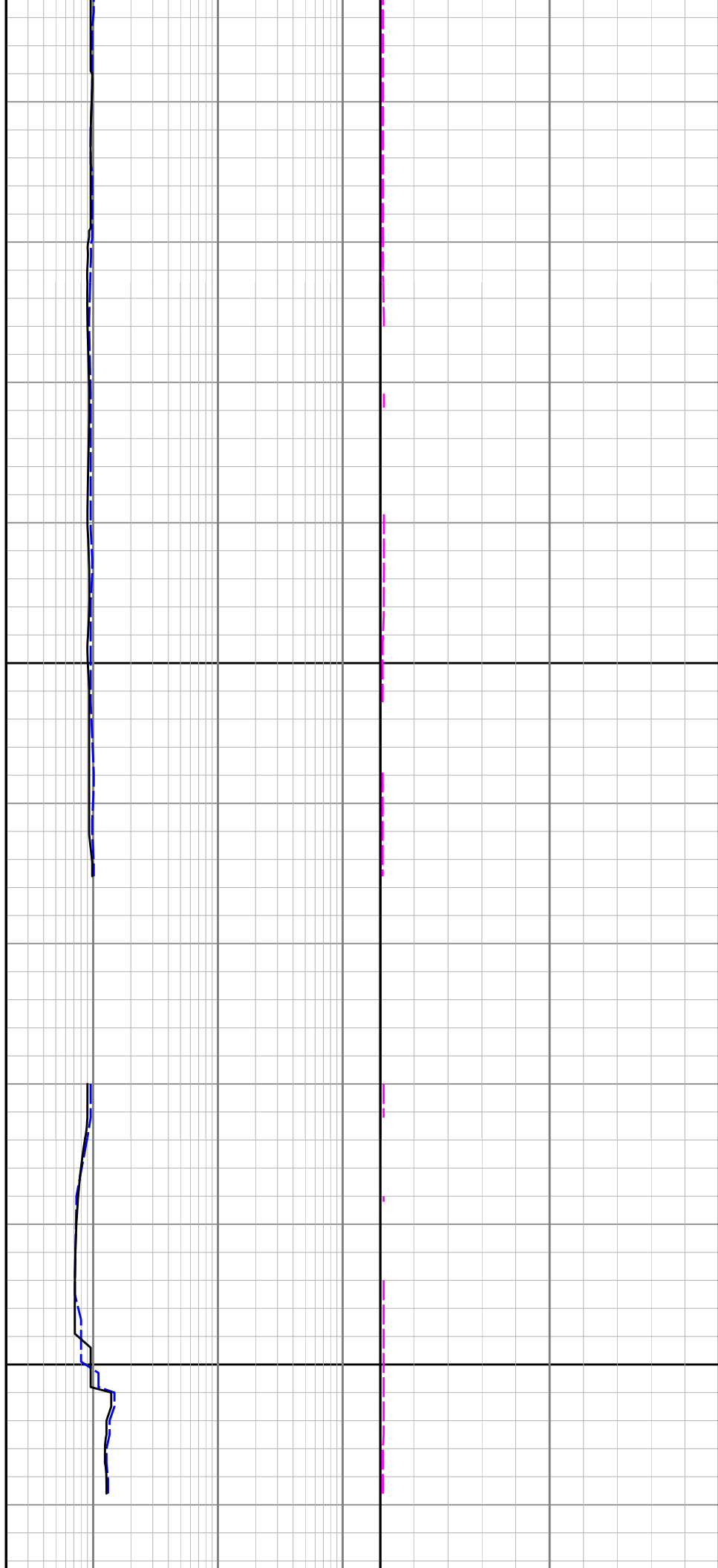
525

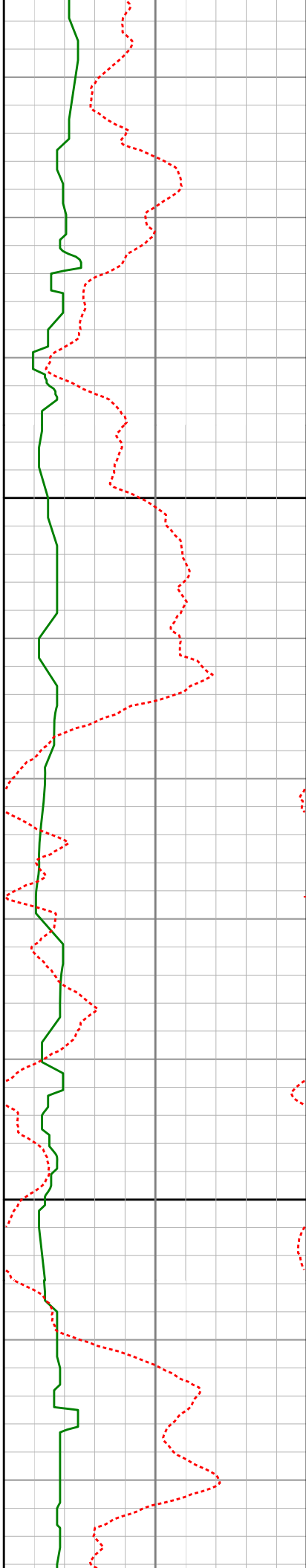




550

575

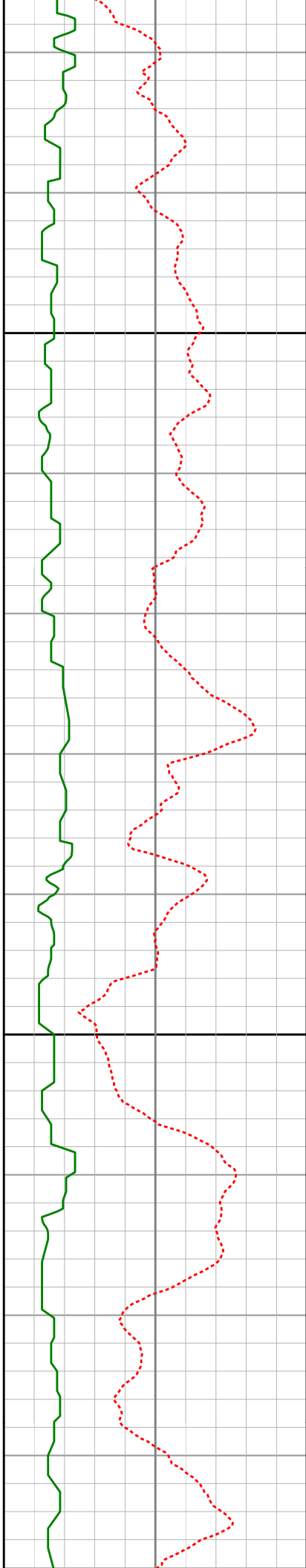




600

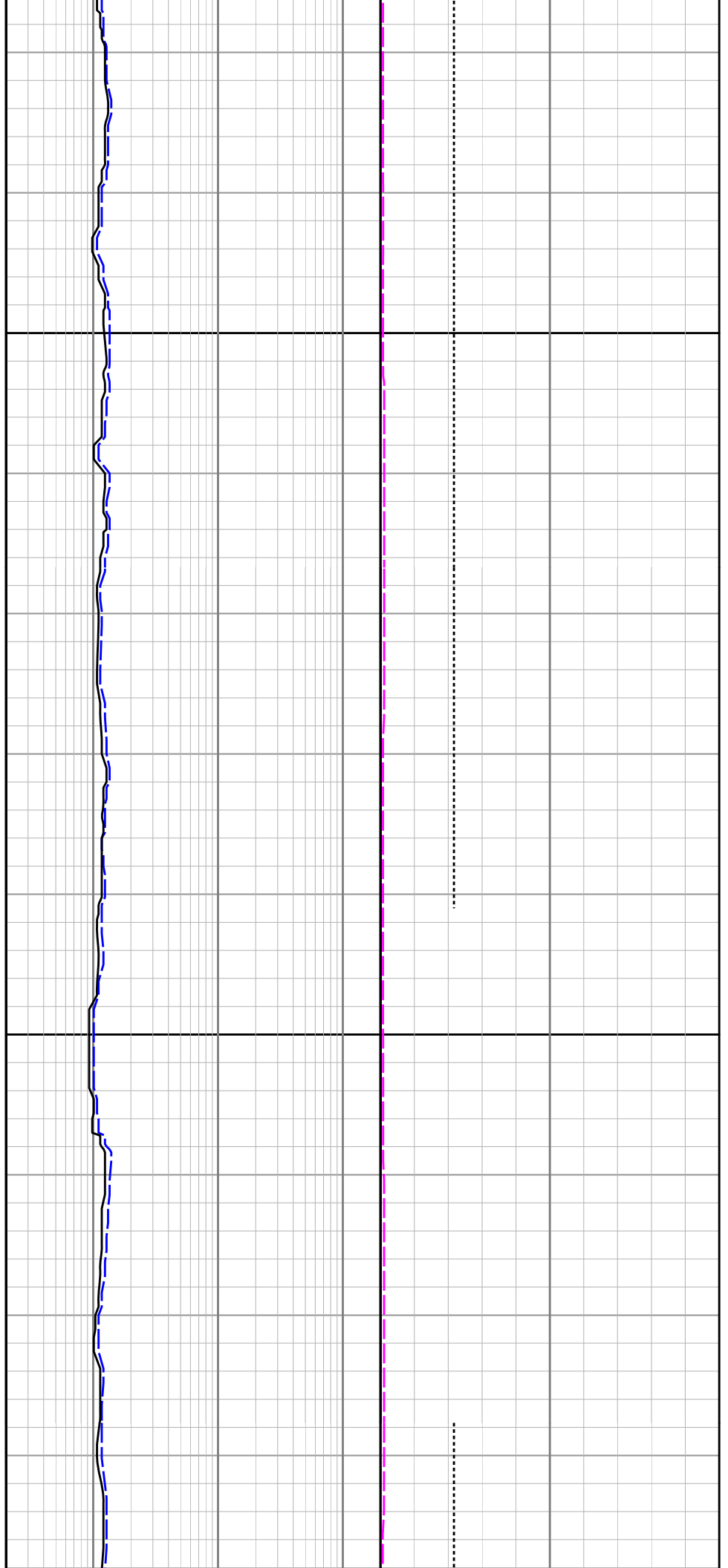
625

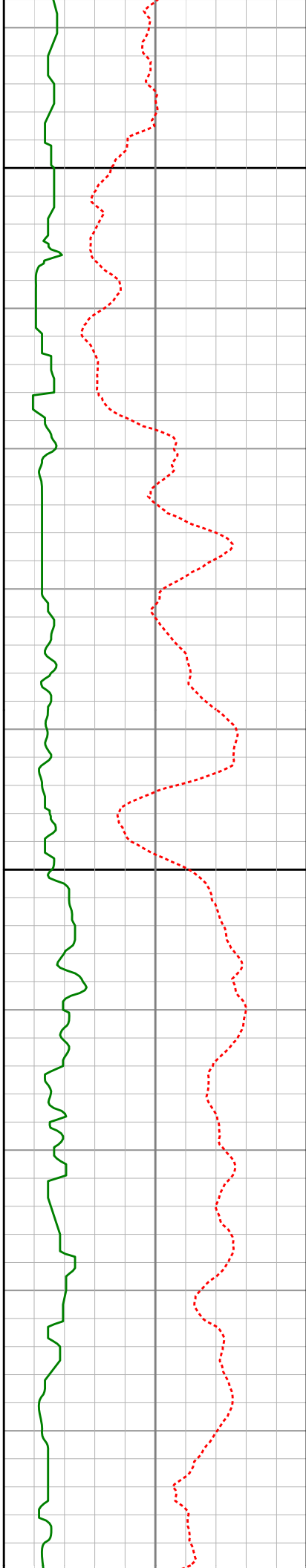




650

675





700

725

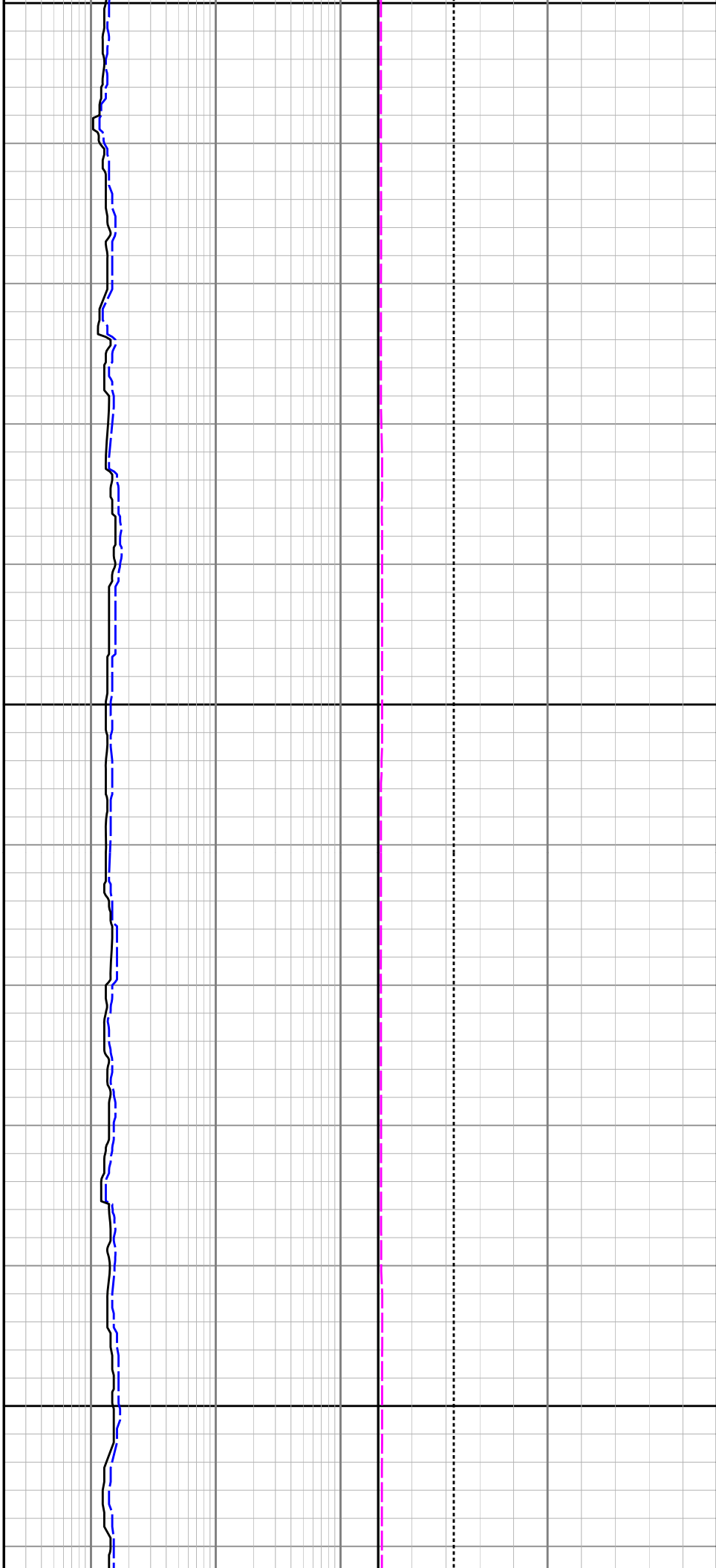
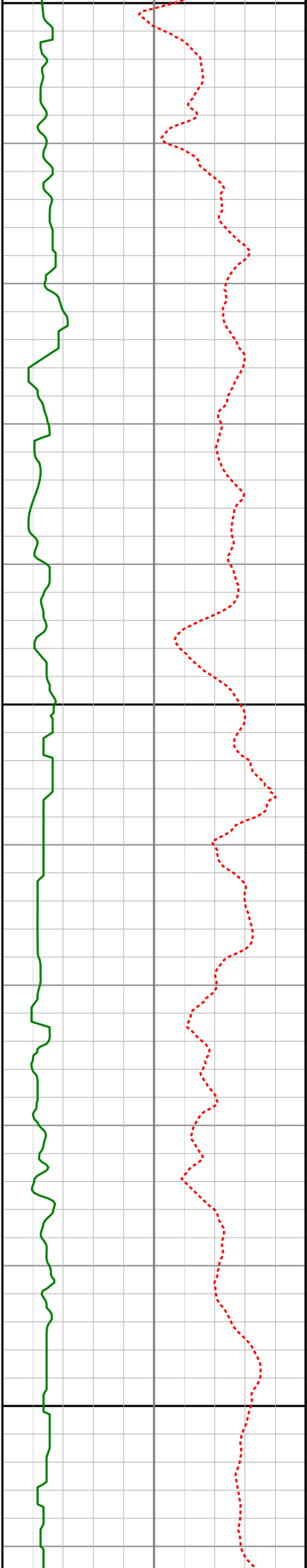
750

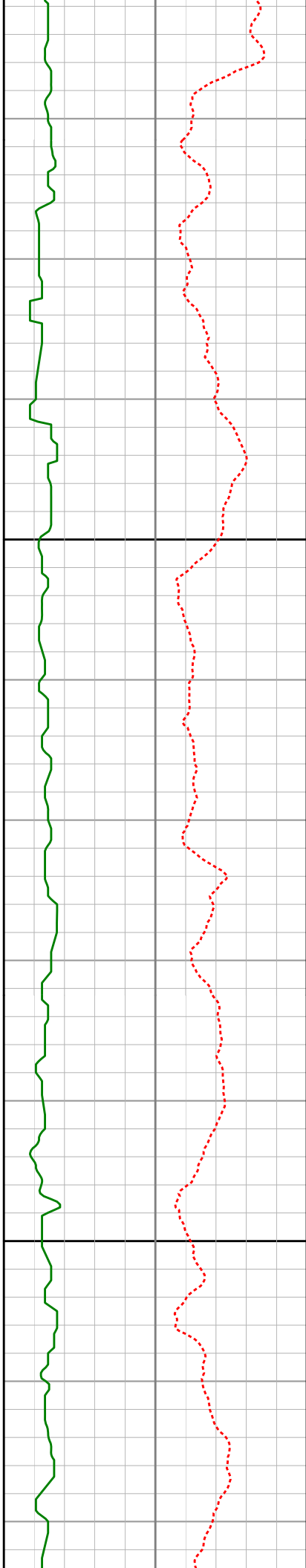


750

775

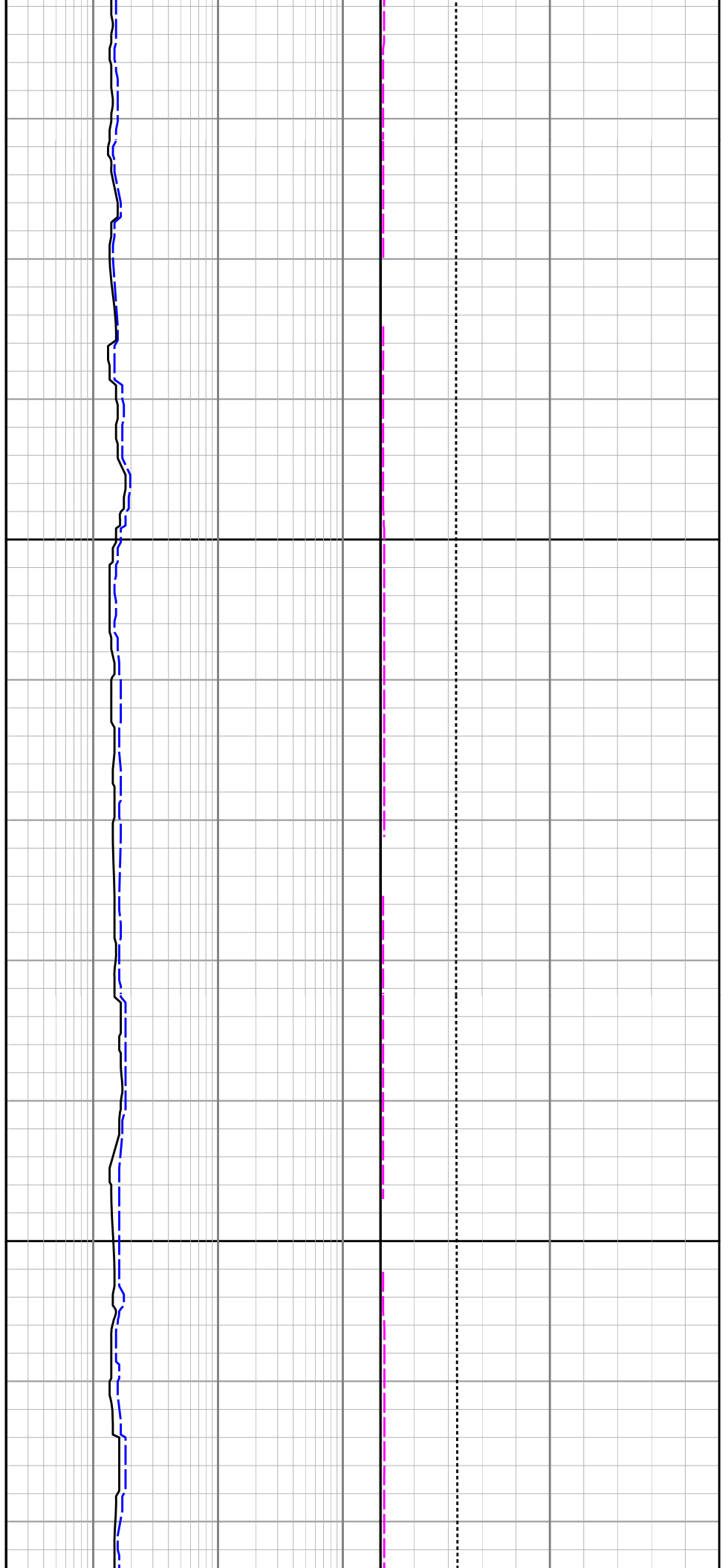
800

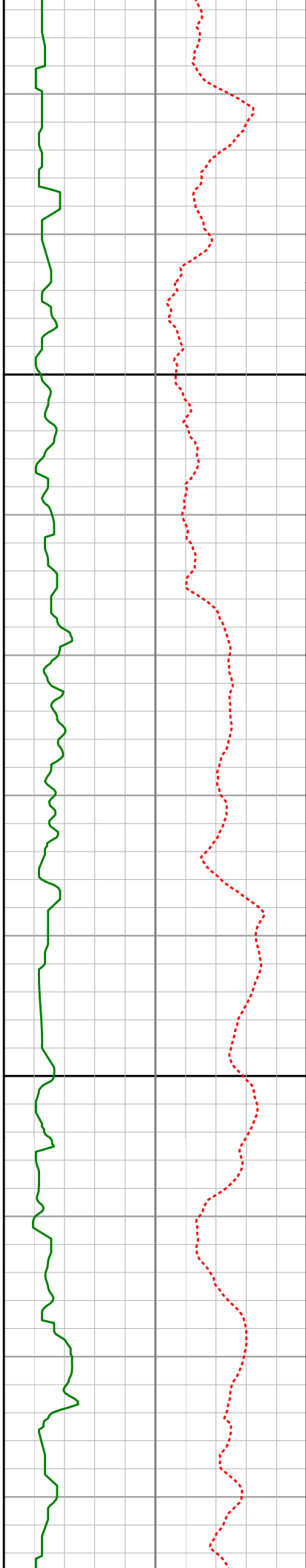




825

850



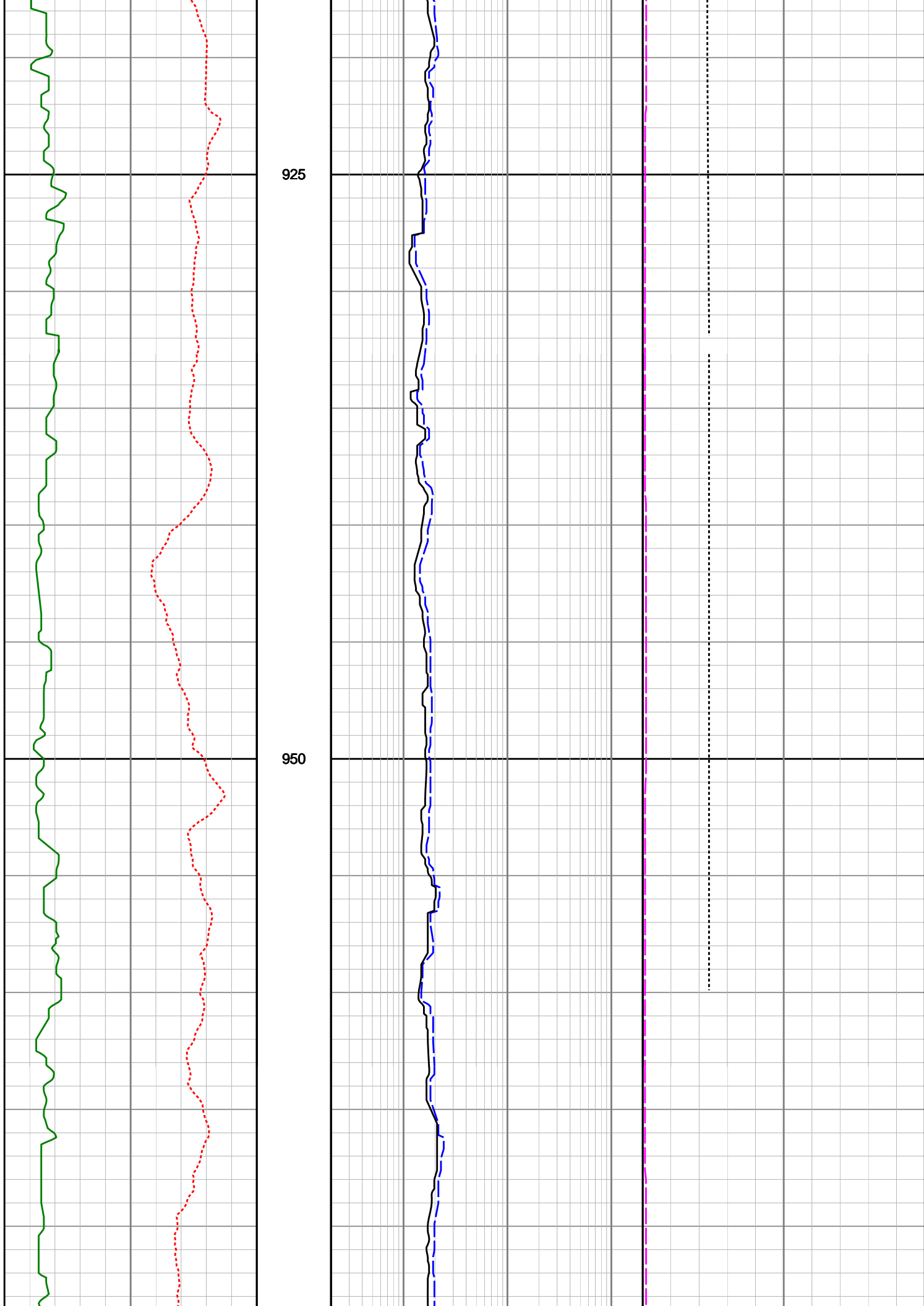


875

900

925

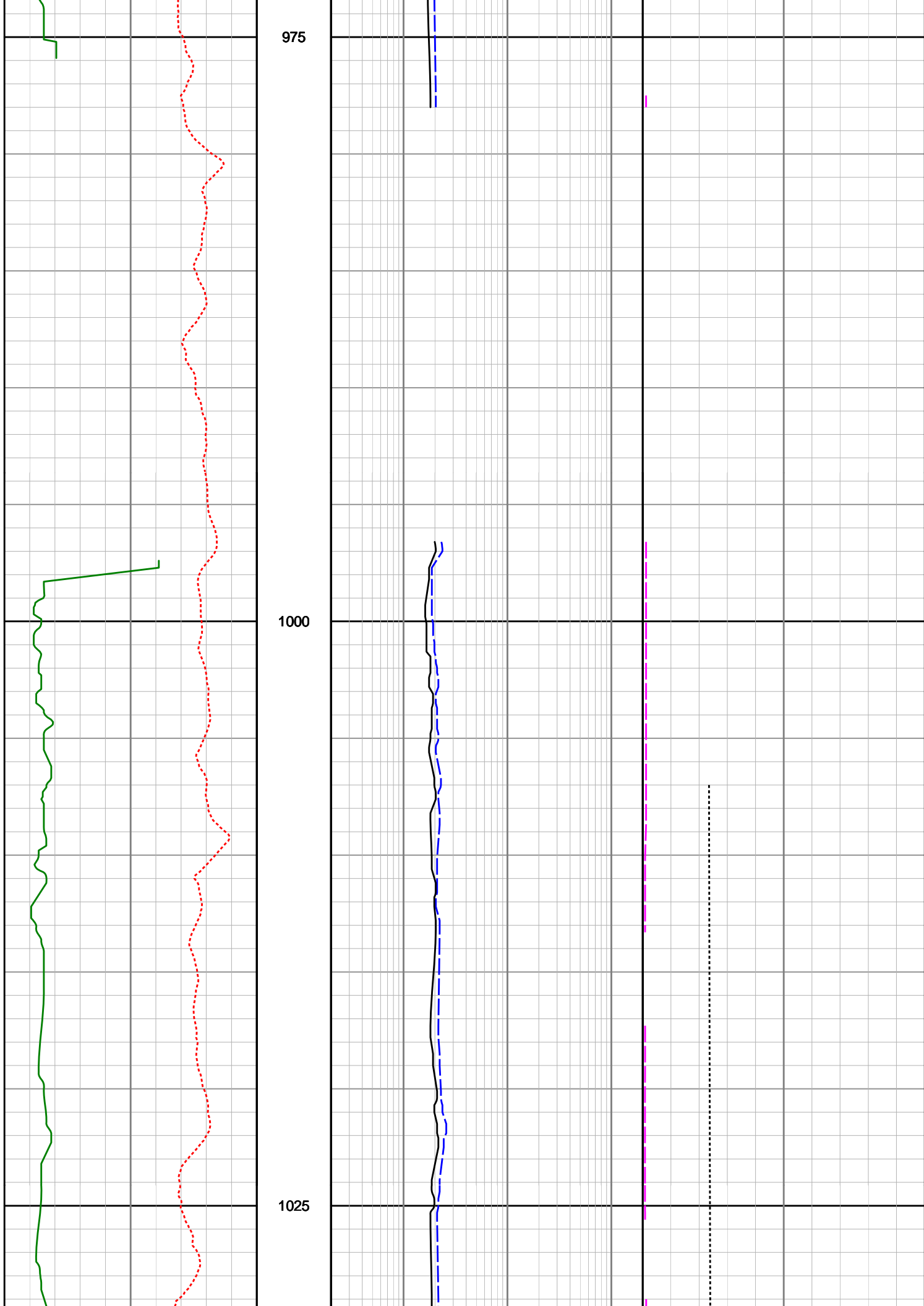
950

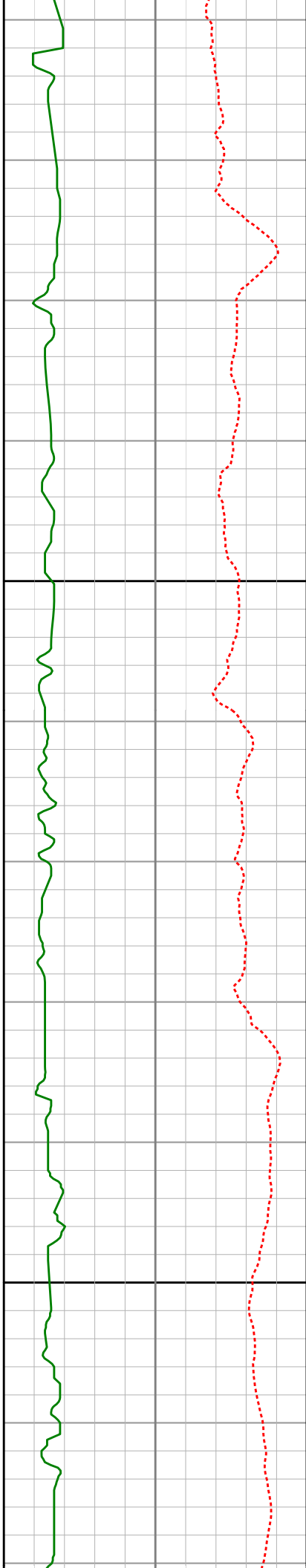


975

1000

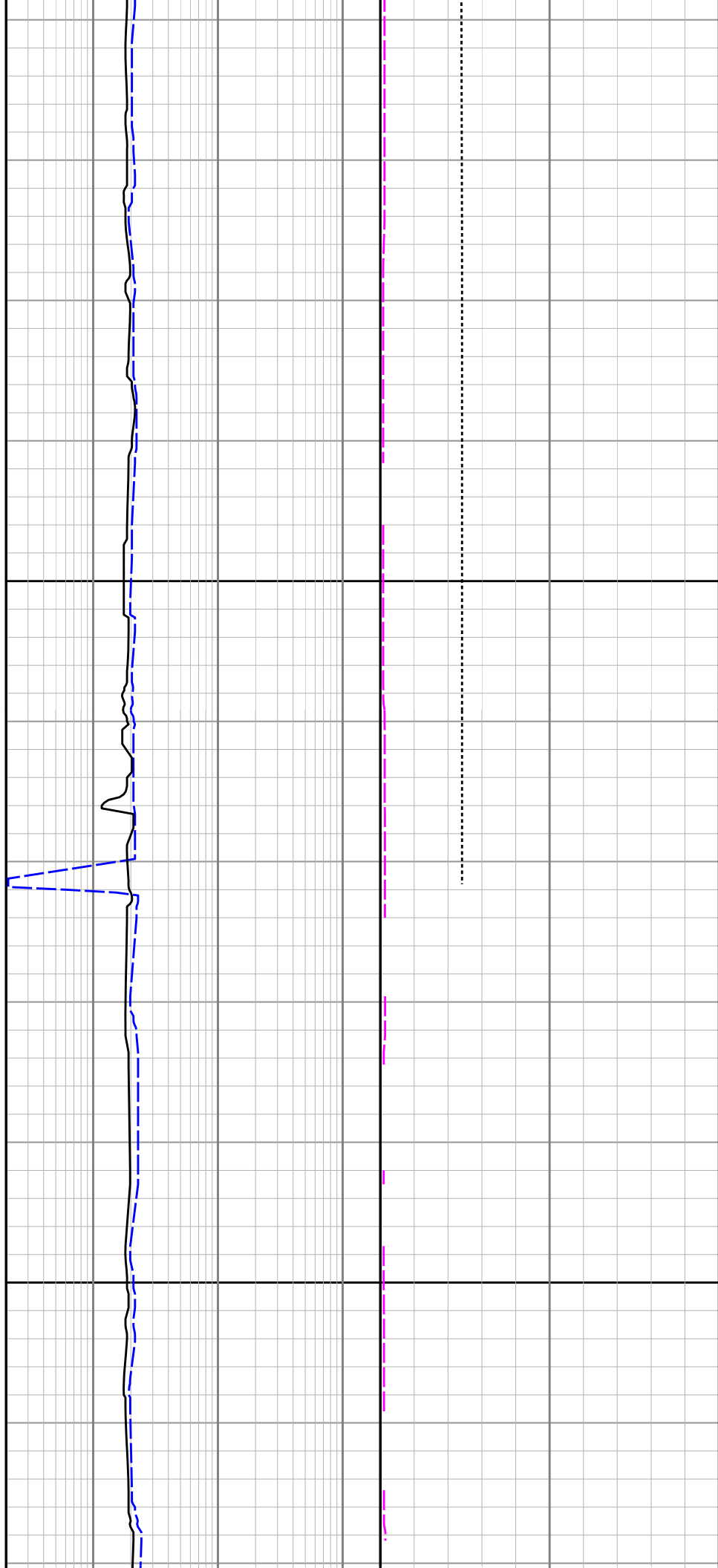
1025

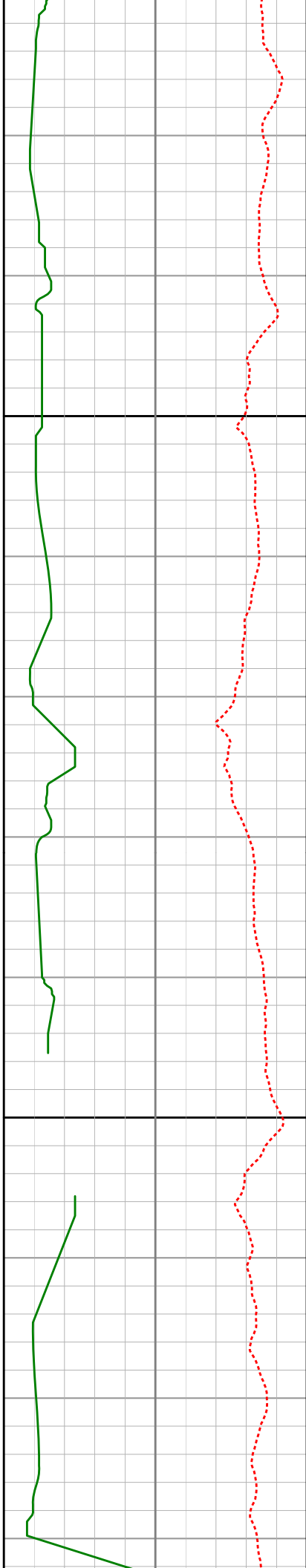




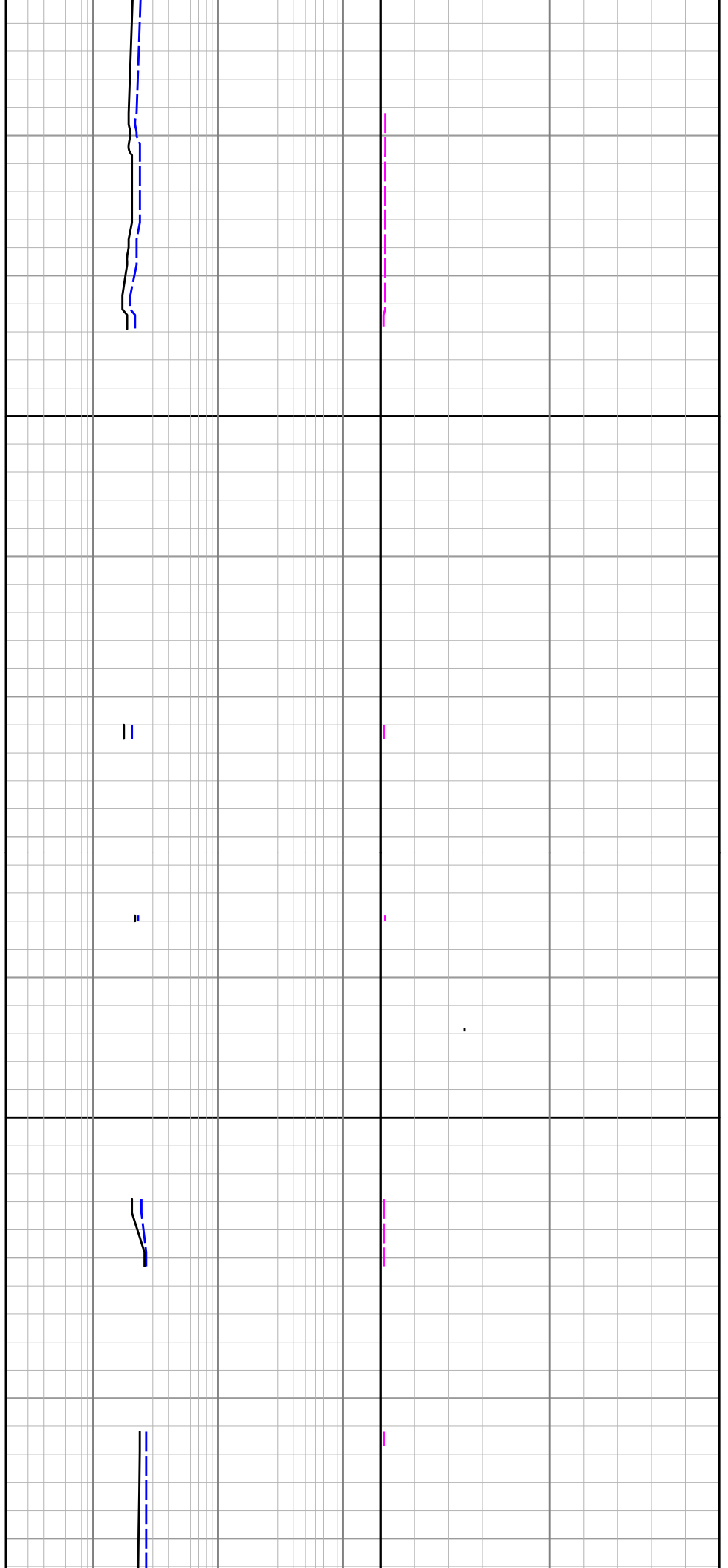
1050

1075





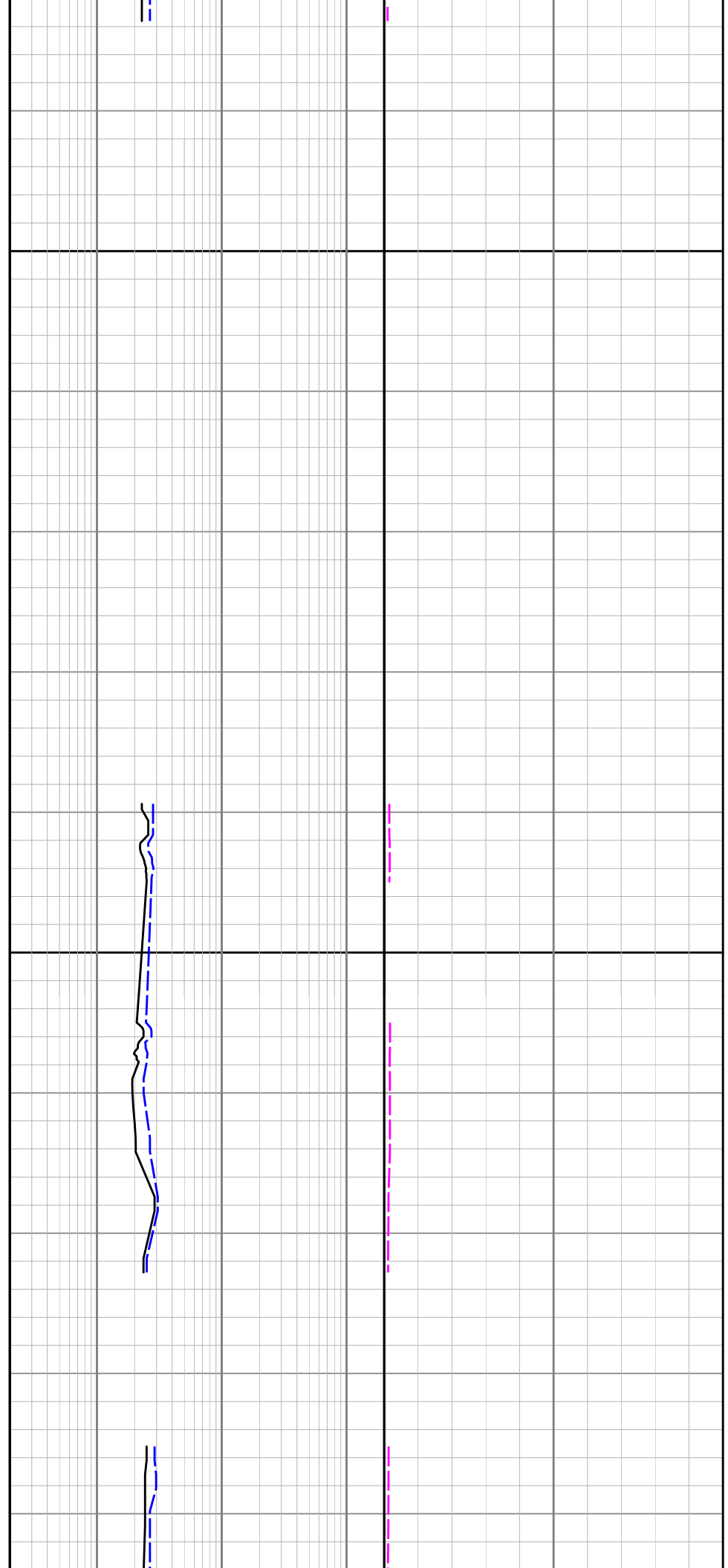
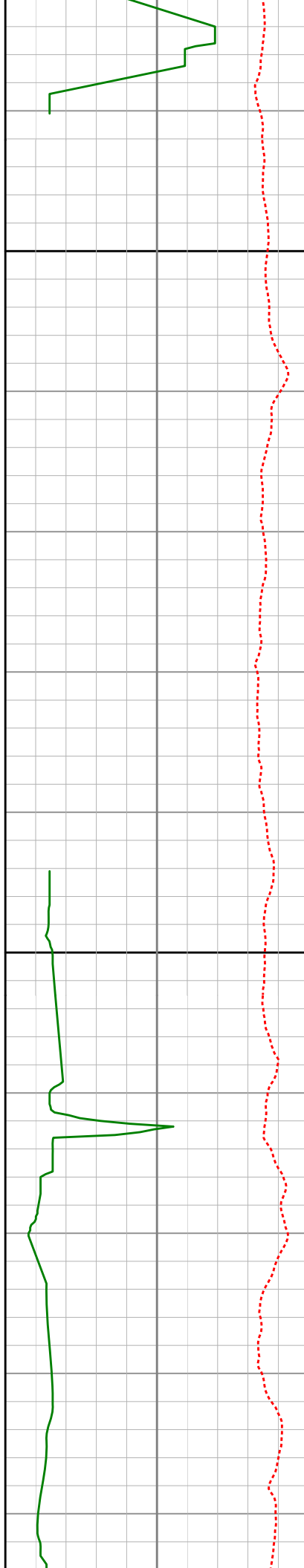
1100



1125

1150

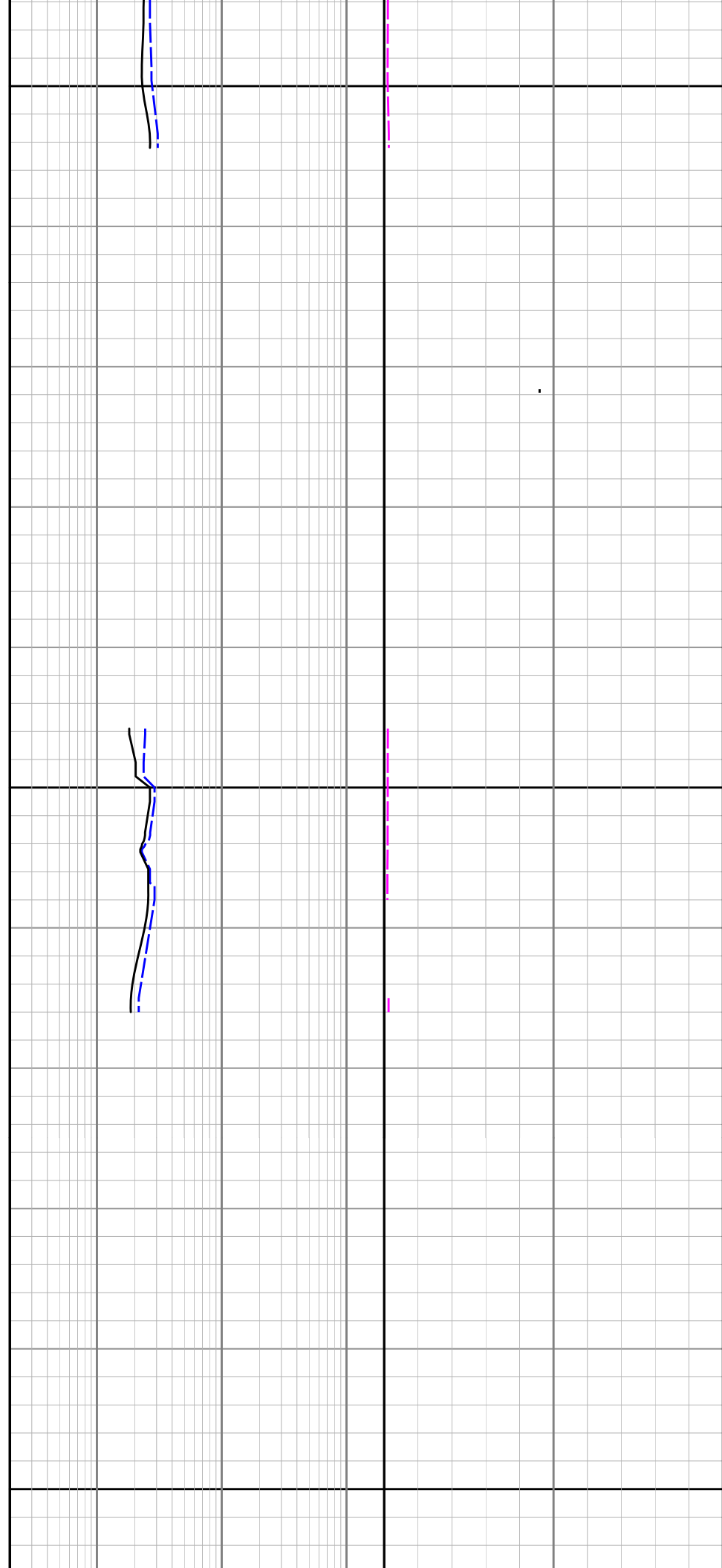
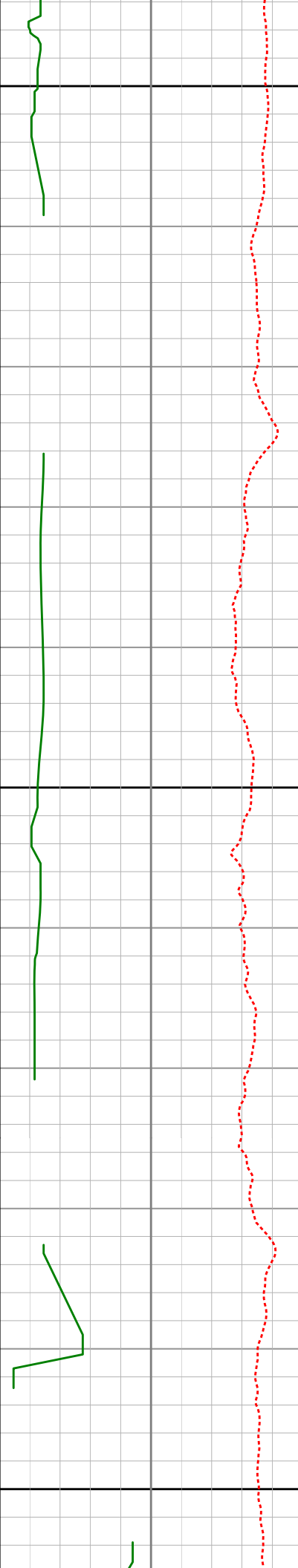
1175

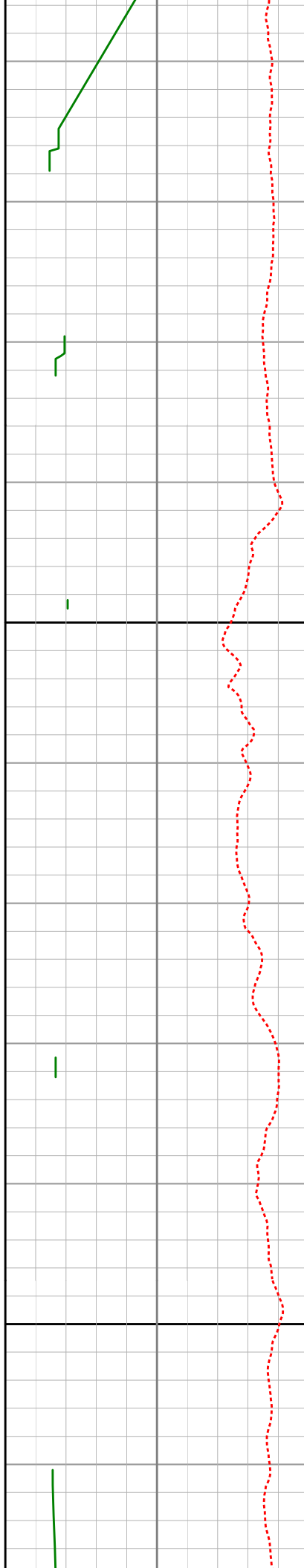


1200

1225

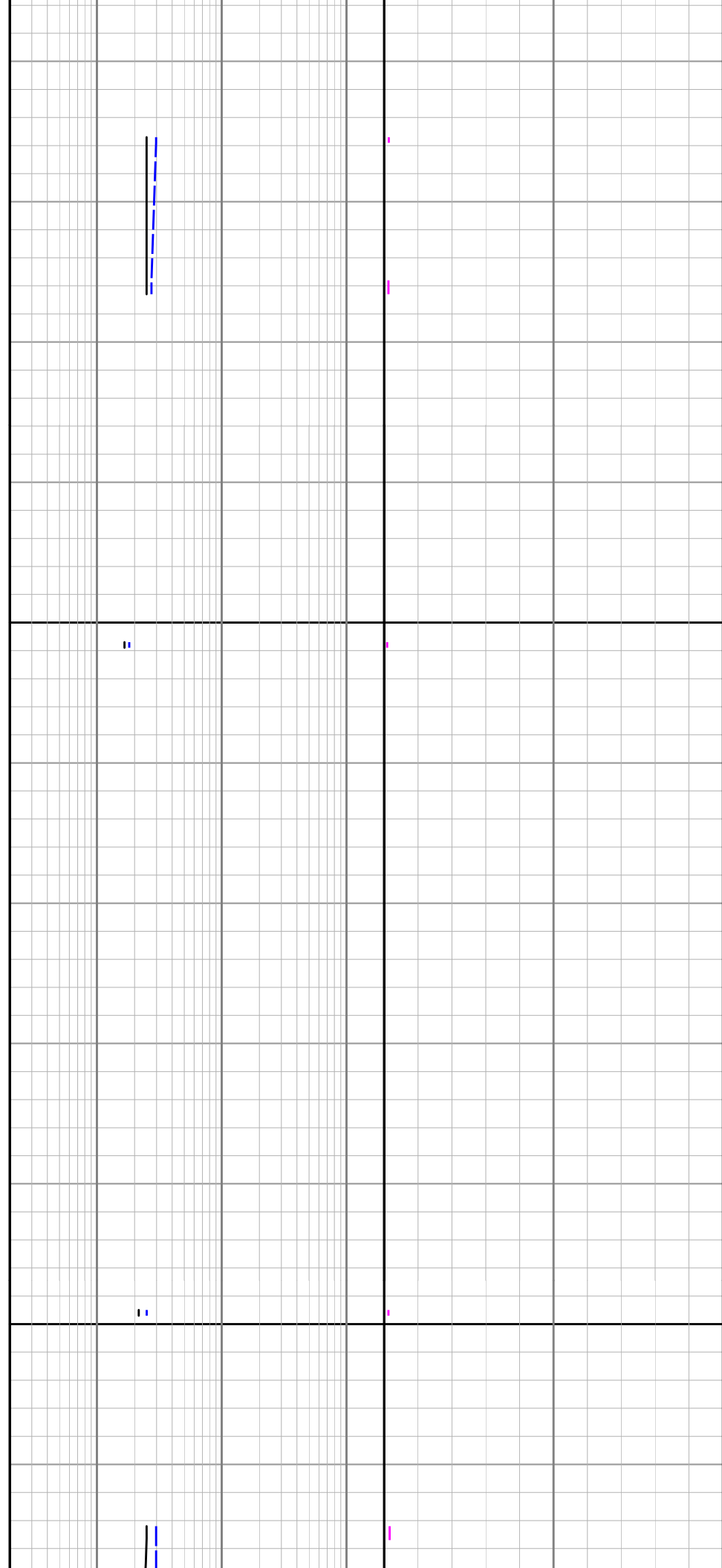
1250





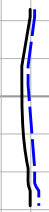
1275

1300



1325

1350



1375

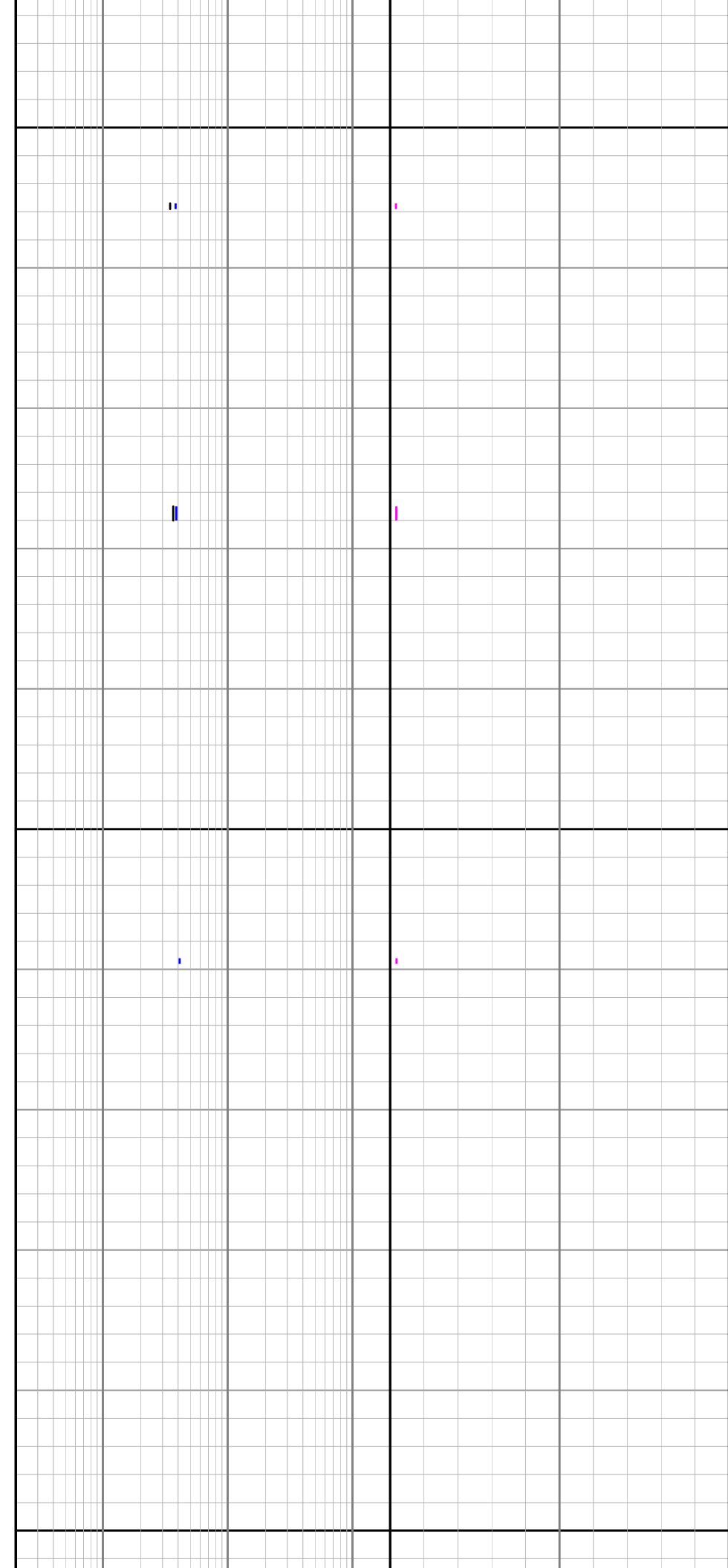
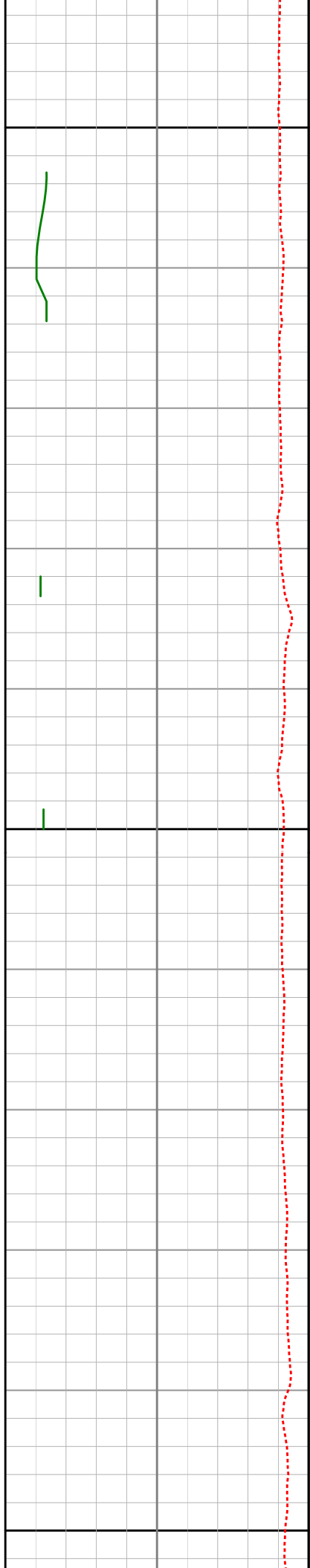
1400

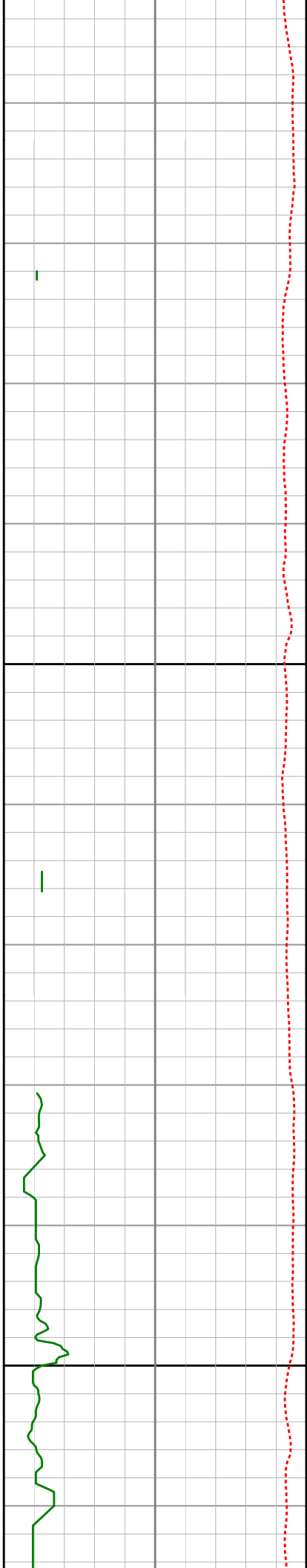


1425

1450

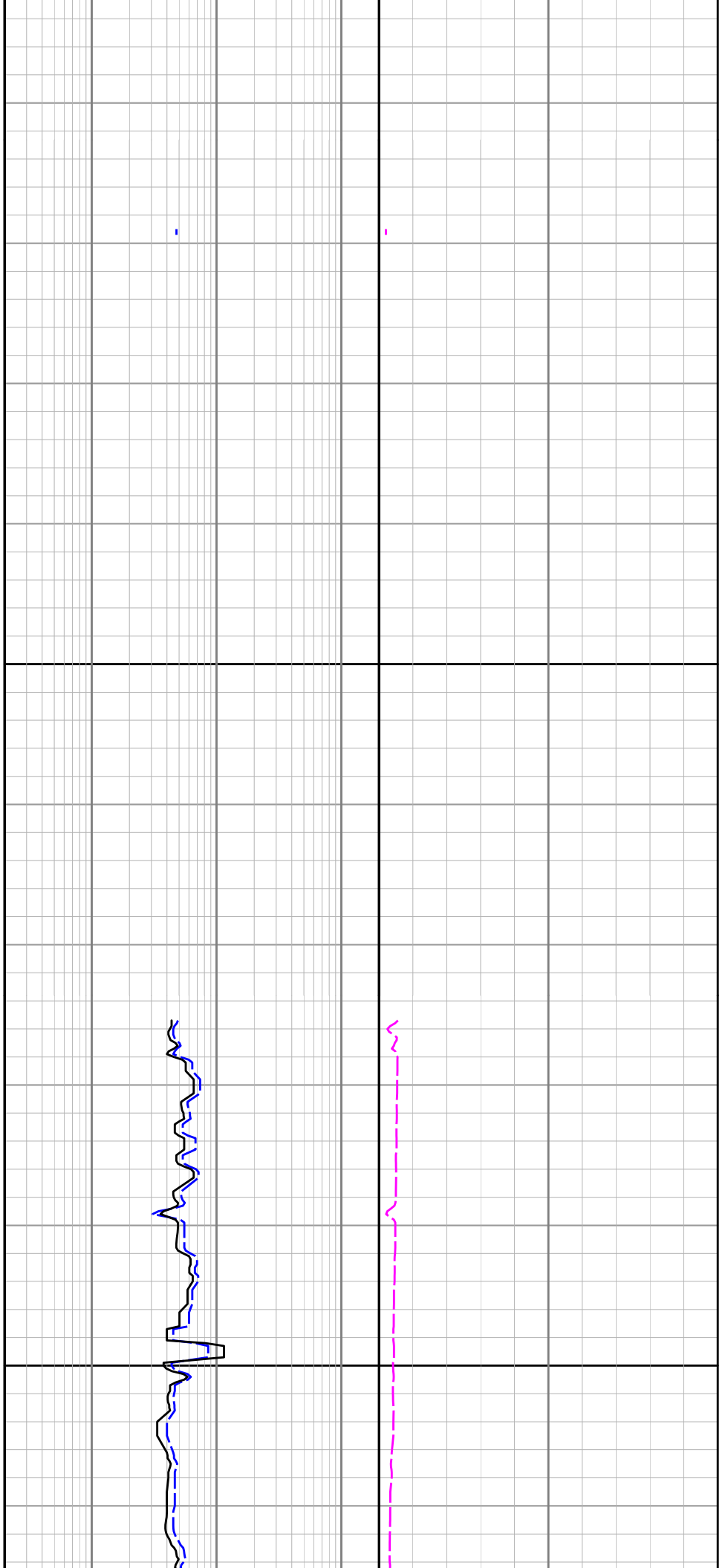
1475

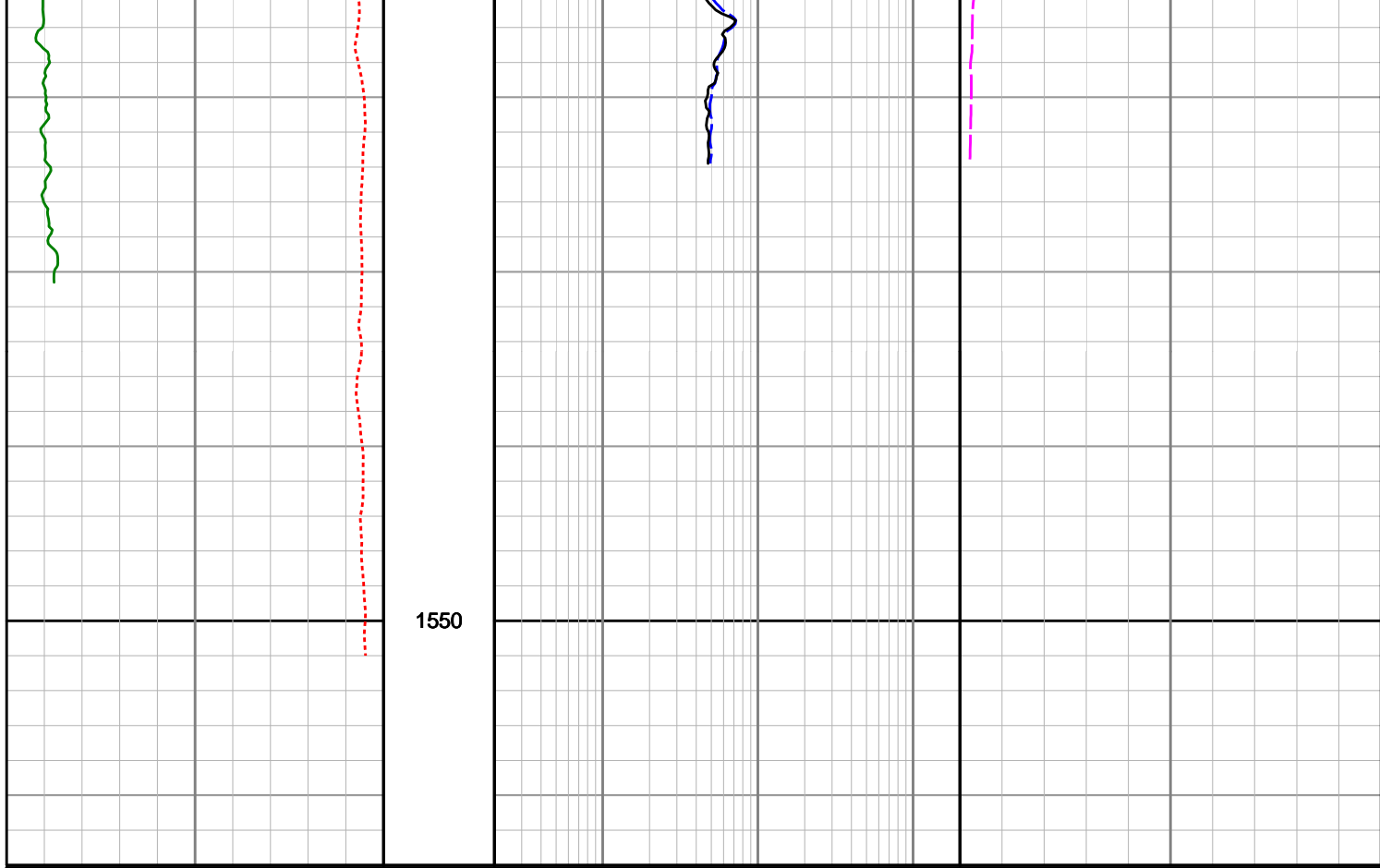




1500

1525





<p>Gamma Ray (SGRC)</p> <p>0 200</p> <p>API</p>	<p>Depth MD</p> <p>1 : 200</p>	<p>Shallow Phase Res (SESP)</p> <p>0.2 200</p> <p>ohmm</p>	<p>Formation Exposure Time (SFXE)</p> <p>0 50</p> <p>hrs</p>
<p>Rate of Penetration (SROP)</p> <p>500 0</p> <p>m/hr</p>		<p>Deep Phase Res (SEDP)</p> <p>0.2 200</p> <p>ohmm</p>	<p>Temperature (STEM)</p> <p>0 100</p> <p>deg C</p>