



Company : Apache

Well : Madfish-1

Interval : 400.00 - 1596.53 meters

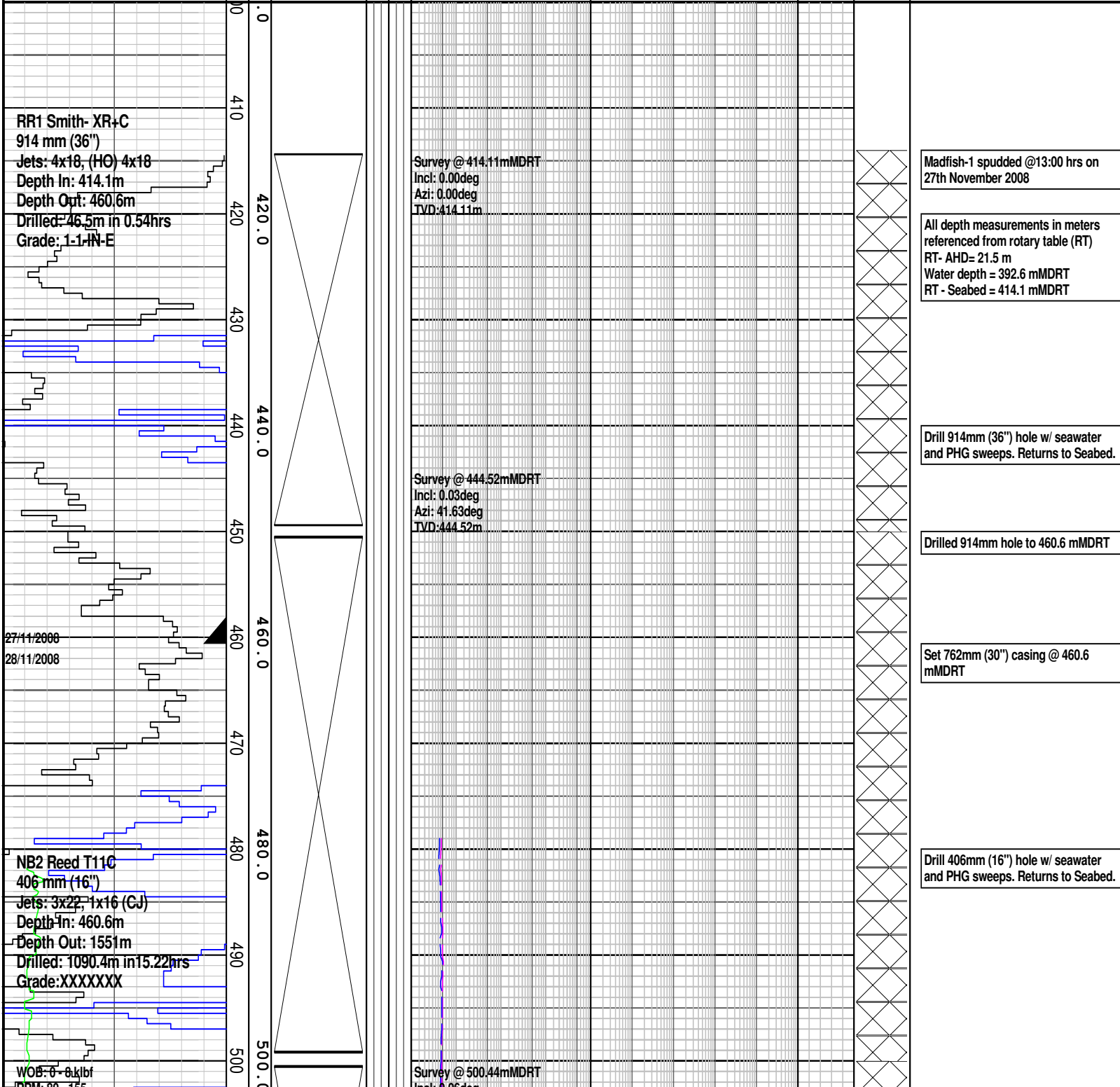
Created : 29/Nov/2008 9:39:27 AM



INTEQ

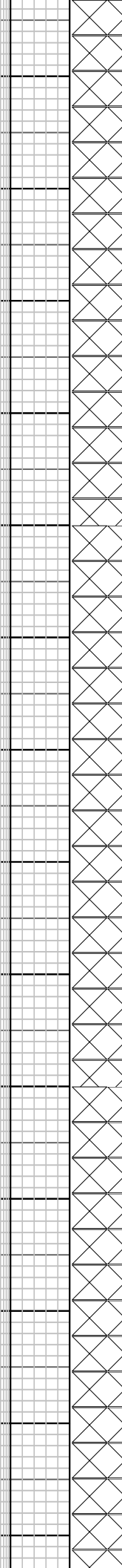
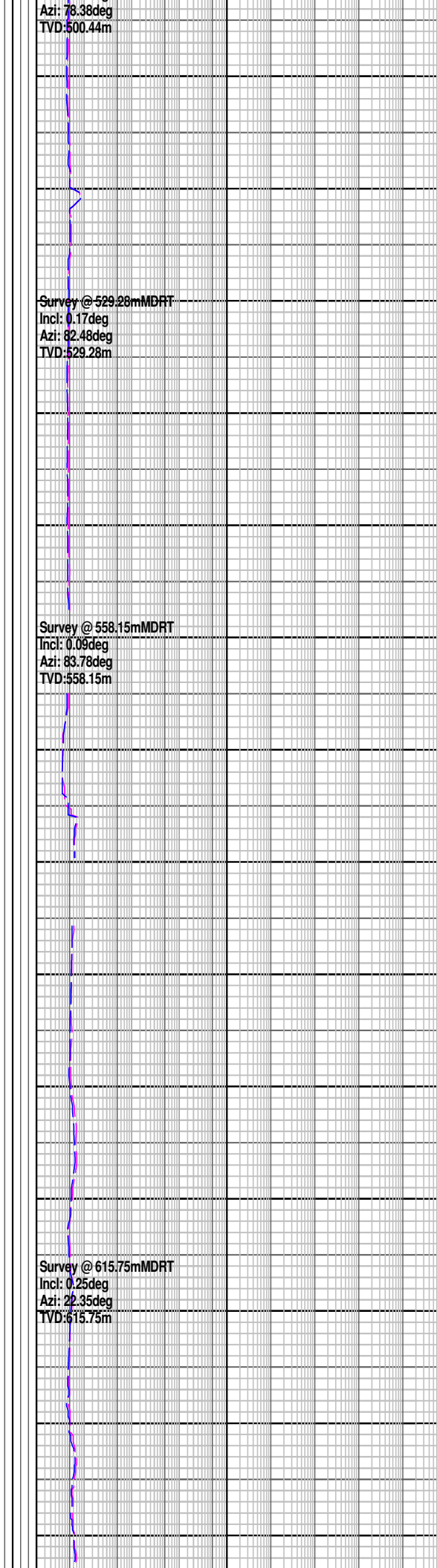
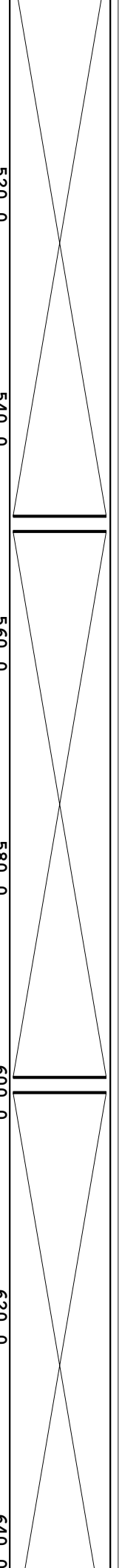
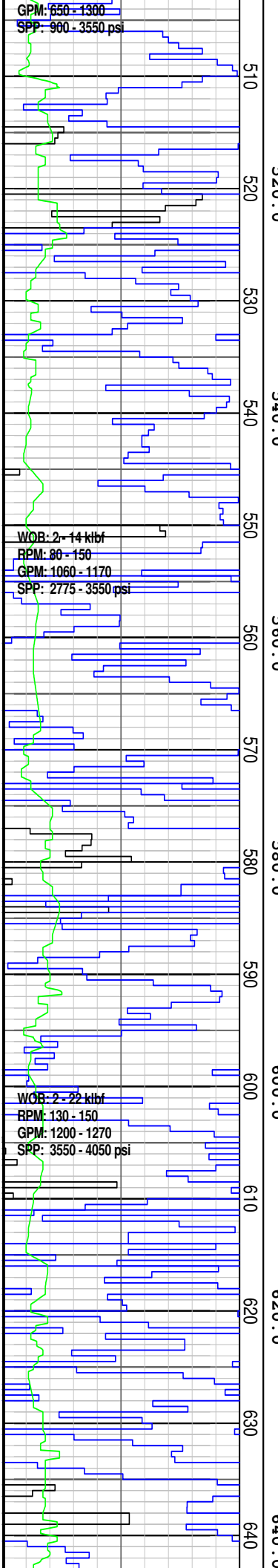
FORMATION EVALUATION LOG

Drilling Rate		MD meters	TVDT meters	Cuttings Lithology	Oil Show	Visual Inferred Porosity	Gas Data		Chromatograph Data	Calcmetry	Interpreted Lithology	Lithology Description
ROP (m/hr)	ROP (m/hr)						Resistivity Shall	Resistivity Deep				
200	200	1:500			0.2	PFG	2000	2000				
180	220				0.2	PFG			CaCO3 %			
160	240								80 140 160 180 100			
140	260								MgCO3 %			
120	280								100 80 60 40 20			
100	300											
80	320											
60	340											
40	360											
20	380											
	400											
Gamma Ray												
api												



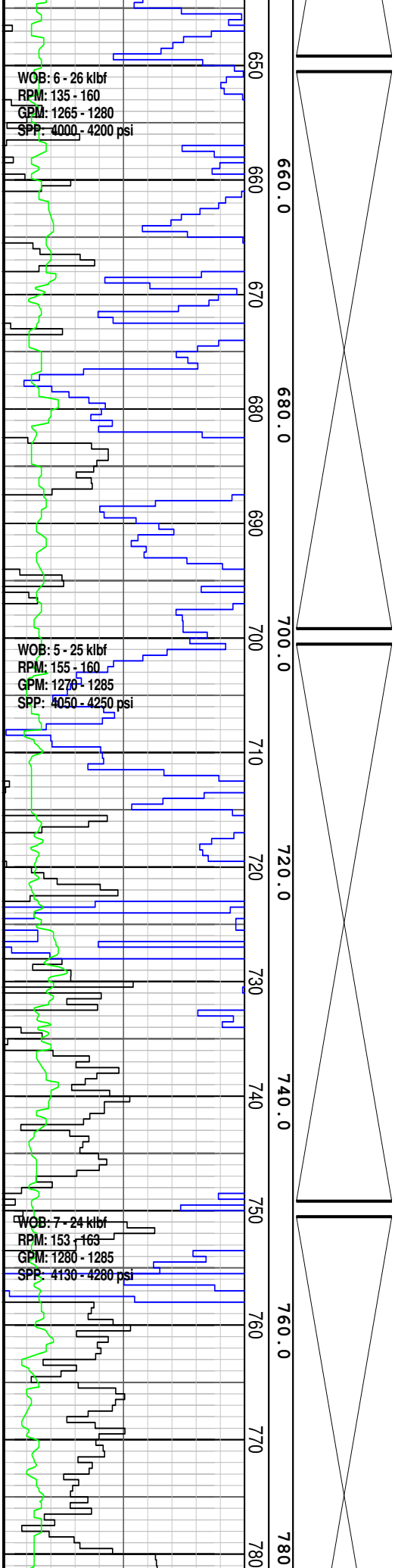
27/11/2008
28/11/2008

WOB: 0 - 8klbf
RPM: 80 - 155



Drill 406mm (16") hole w/ seawater and PHG sweeps. Returns to Seabed.

Drill 406mm (16") hole w/ seawater and PHG sweeps. Returns to Seabed.



Survey @ 644.51mMDRT
 Incl: 0.25deg
 Azi: 41.76deg
 TVD: 644.51m

Survey @ 673.26mMDRT
 Incl: 0.25deg
 Azi: 20.31deg
 TVD: 673.26m

Survey @ 702.10mMDRT
 Incl: 0.20deg
 Azi: 17.59deg
 TVD: 702.10m

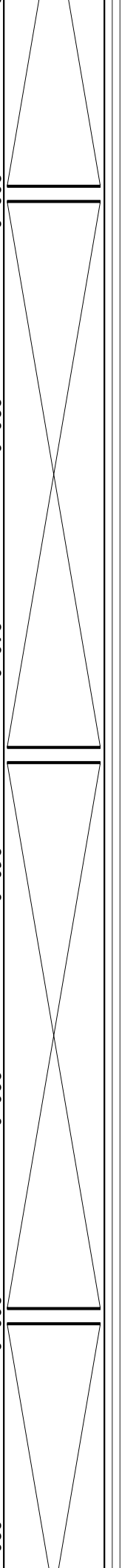
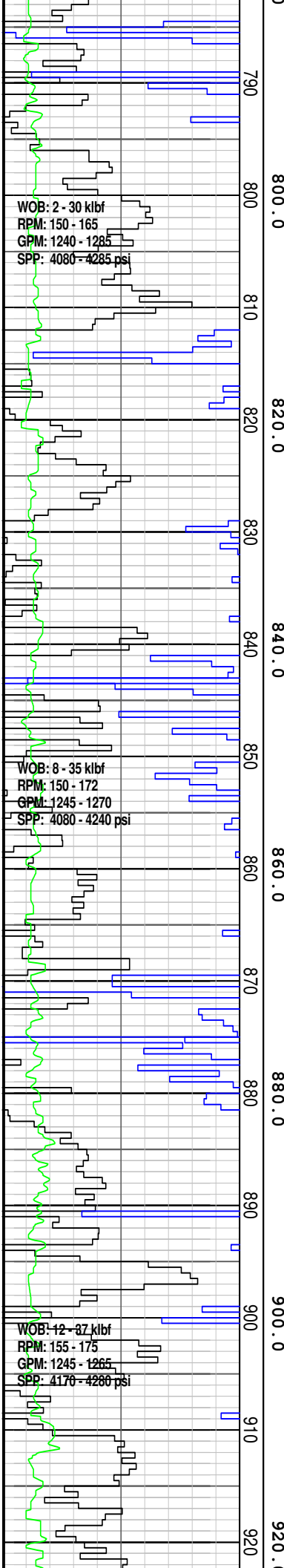
Survey @ 730.84mMDRT
 Incl: 0.25deg
 Azi: 3.26deg
 TVD: 730.84m

Survey @ 759.63mMDRT
 Incl: 0.22deg
 Azi: 16.58deg
 TVD: 759.634m

Drill 406mm (16") hole w/ seawater and PHG sweeps. Returns to Seabed.

Drill 406mm (16") hole w/ seawater and PHG sweeps. Returns to Seabed.

Drill 406mm (16") hole w/ seawater and PHG sweeps. Returns to Seabed.



Survey @ 788.36mMDRT
 Incl: 0.25deg
 Azi: 359.64deg
 TVD: 788.36m

Survey @ 817.05mMDRT
 Incl: 0.28deg
 Azi: 5.02deg
 TVD: 817.05m

Survey @ 845.74mMDRT
 Incl: 0.31deg
 Azi: 353.38deg
 TVD: 845.74m

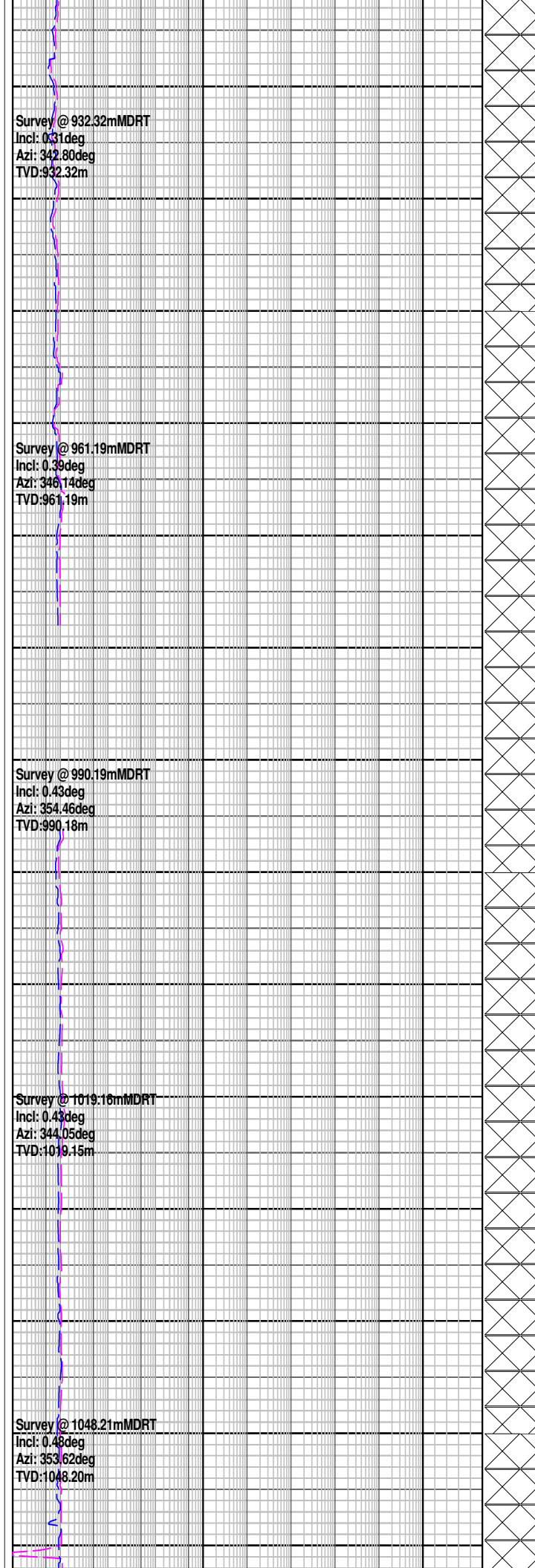
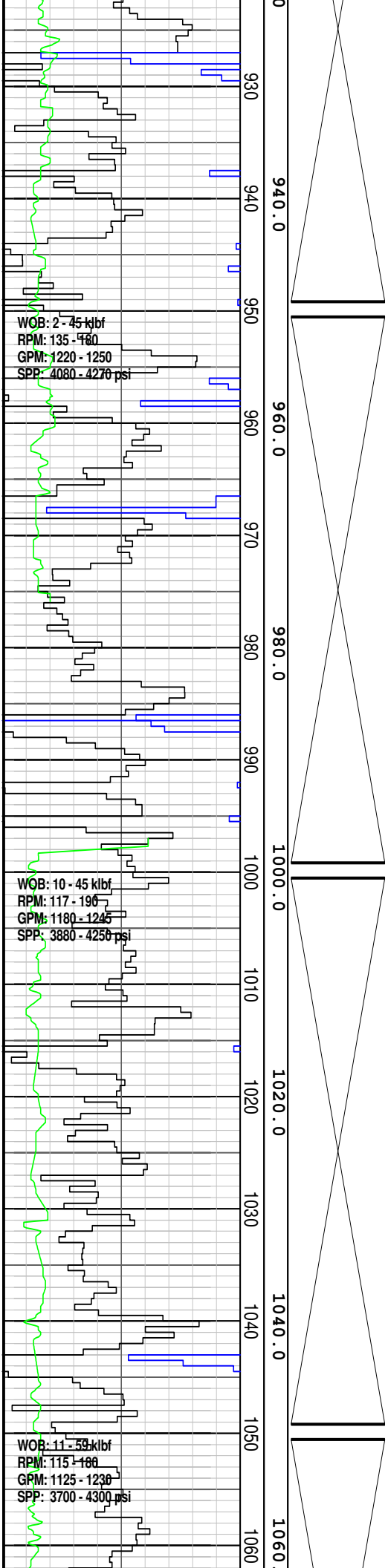
Survey @ 874.53mMDRT
 Incl: 0.28deg
 Azi: 355.63deg
 TVD: 874.53m

Survey @ 903.36mMDRT
 Incl: 0.40deg
 Azi: 349.71deg
 TVD: 903.36m

Drill 406mm (16") hole w/ seawater and PHG sweeps. Returns to Seabed.

Drill 406mm (16") hole w/ seawater and PHG sweeps. Returns to Seabed.

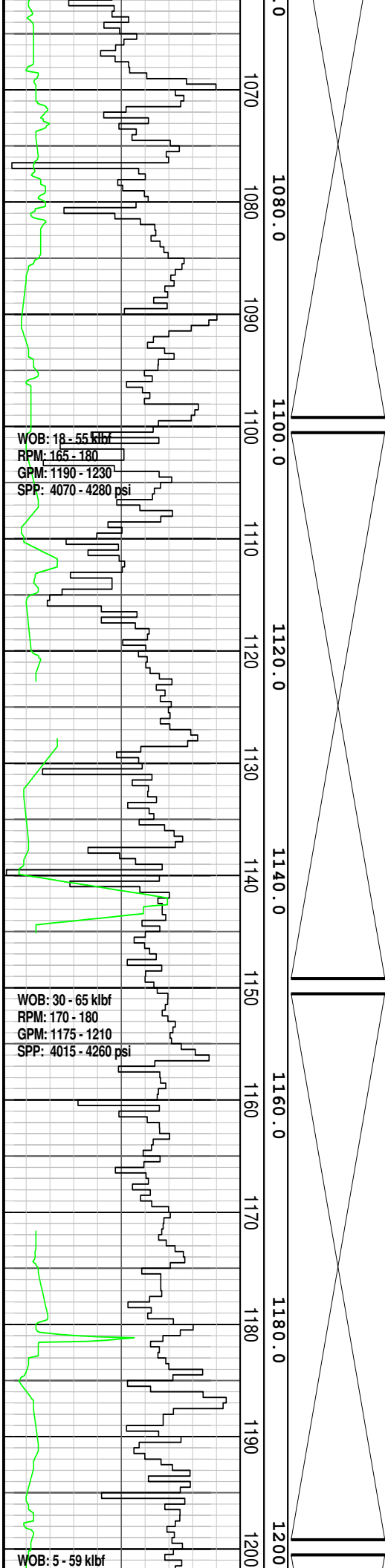
Drill 406mm (16") hole w/ seawater and PHG sweeps. Returns to Seabed.



Drill 406mm (16") hole w/ seawater and PHG sweeps. Returns to Seabed.

Drill 406mm (16") hole w/ seawater and PHG sweeps. Returns to Seabed.

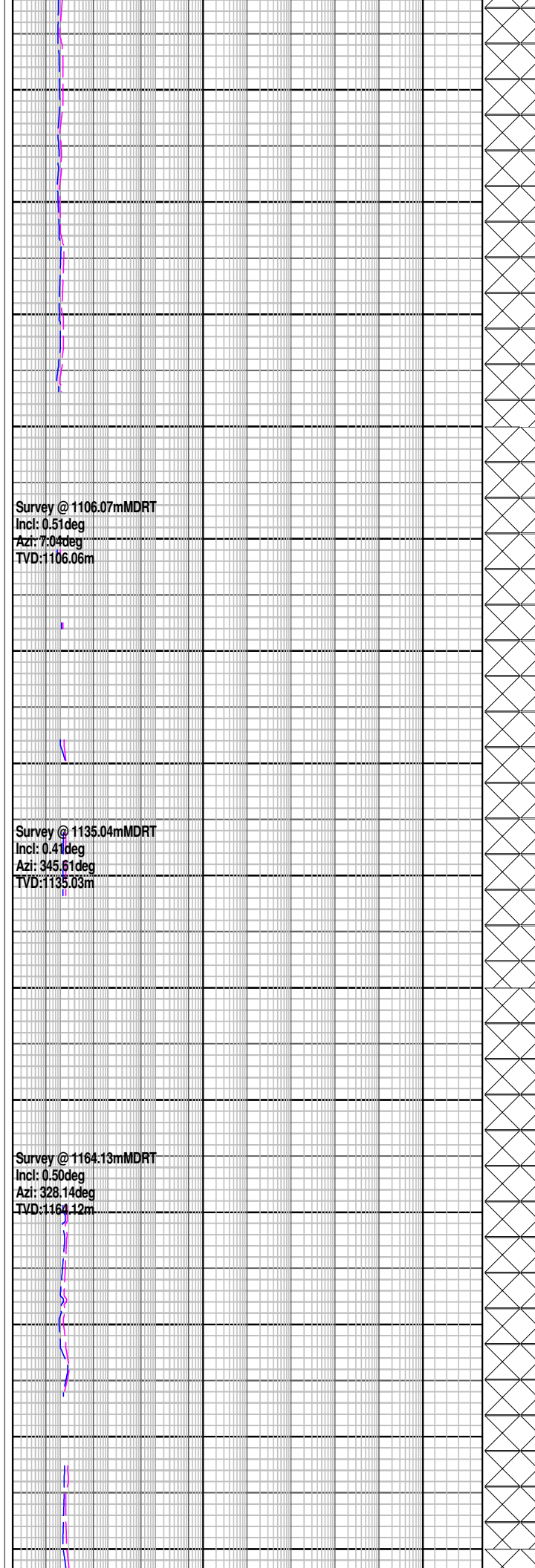
Drill 406mm (16") hole w/ seawater and PHG sweeps. Returns to Seabed.



WOB: 18 - 55 kbf
 RPM: 165 - 180
 GPM: 1190 - 1230
 SPP: 4070 - 4280 psi

WOB: 30 - 65 kbf
 RPM: 170 - 180
 GPM: 1175 - 1210
 SPP: 4015 - 4260 psi

WOB: 5 - 59 kbf



Survey @ 1106.07mMDRT
 Incl: 0.51deg
 Azi: 7.04deg
 TVD: 1106.06m

Survey @ 1135.04mMDRT
 Incl: 0.41deg
 Azi: 345.61deg
 TVD: 1135.03m

Survey @ 1164.13mMDRT
 Incl: 0.50deg
 Azi: 328.14deg
 TVD: 1164.12m

Drill 406mm (16") hole w/ seawater and PHG sweeps. Returns to Seabed.

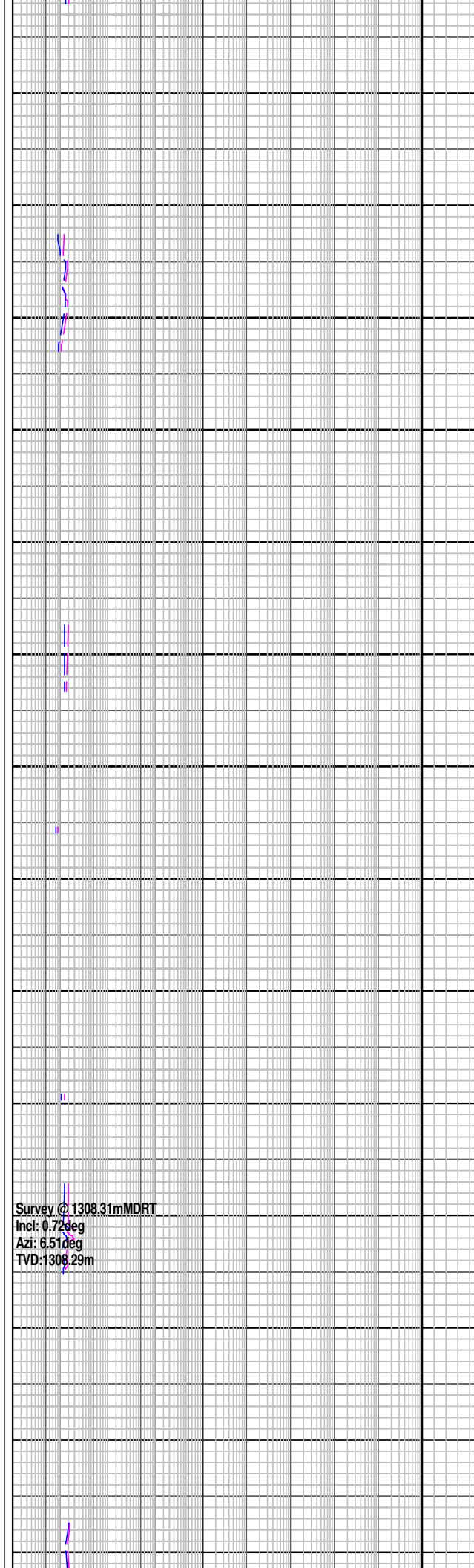
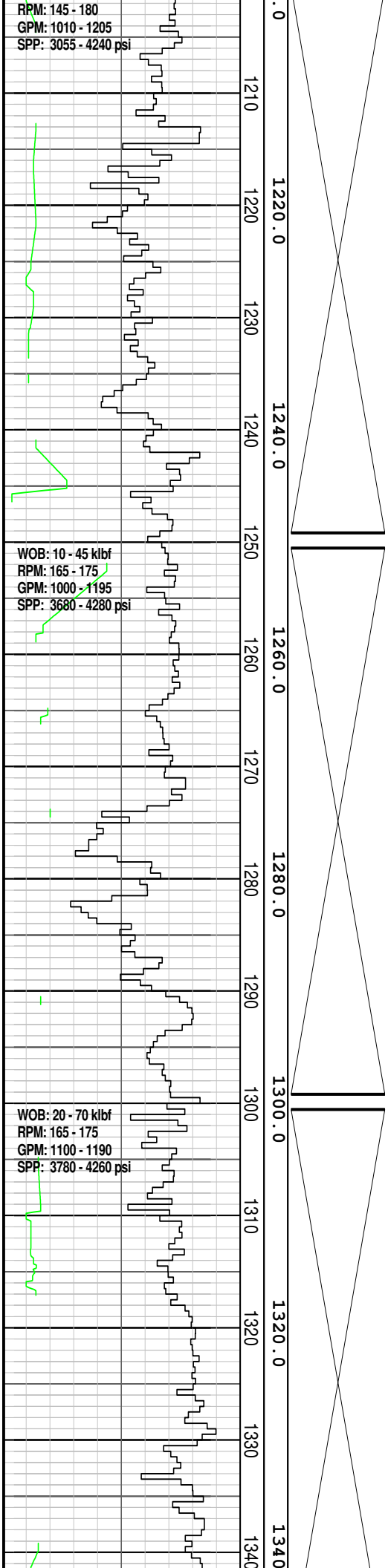
Drill 406mm (16") hole w/ seawater and PHG sweeps. Returns to Seabed.

Drill 406mm (16") hole w/ seawater

RPM: 145 - 180
GPM: 1010 - 1205
SPP: 3055 - 4240 psi

WOB: 10 - 45 klbf
RPM: 165 - 175
GPM: 1000 - 1195
SPP: 3680 - 4280 psi

WOB: 20 - 70 klbf
RPM: 165 - 175
GPM: 1100 - 1190
SPP: 3780 - 4260 psi

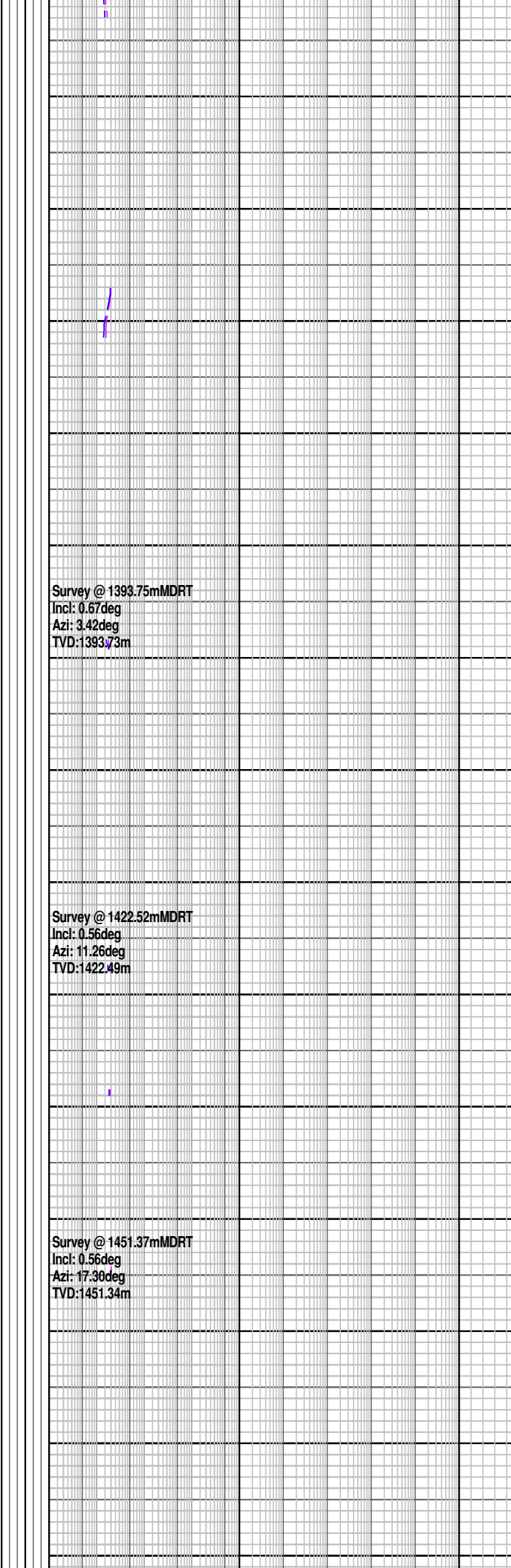
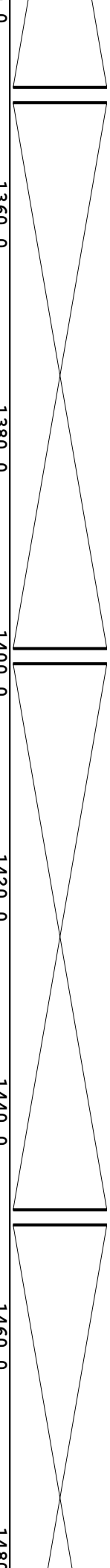
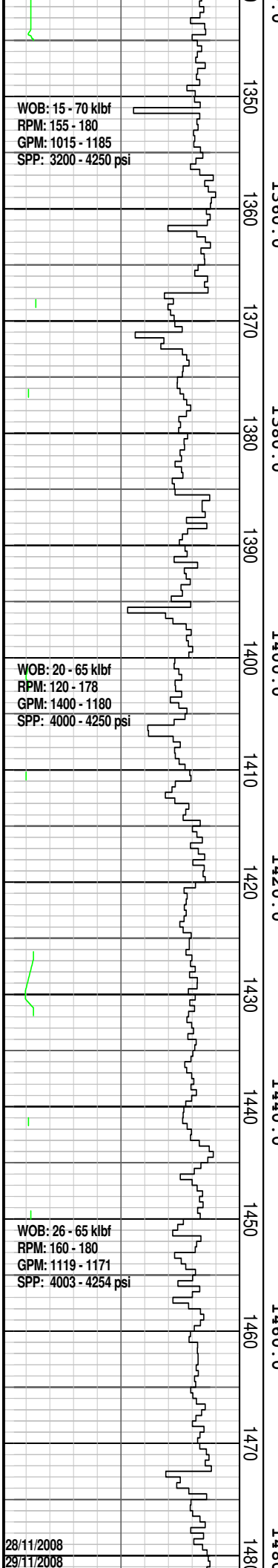


Survey @ 1308.31mMDRT
Incl: 0.72deg
Azi: 6.51deg
TVD: 1308.29m

and PHG sweeps. Returns to Seabed.

Drill 406mm (16") hole w/ seawater and PHG sweeps. Returns to Seabed.

Drill 406mm (16") hole w/ seawater and PHG sweeps. Returns to Seabed.



Drill 406mm (16") hole w/ seawater and PHG sweeps. Returns to Seabed.

Drill 406mm (16") hole w/ seawater and PHG sweeps. Returns to Seabed.

Drill 406mm (16") hole w/ seawater and PHG sweeps. Returns to Seabed.

