



DRILLING DATA PLOT



WELL : MACLEAN 1

FROM (m): 50 TO (m): 370 SCALE: 1/ 500

Country : AUSTRALIA
 Region : VICTORIA
 Field : GIPPSLAND BASIN
 Permit : VIC/P-47
 Well Type : VERTICAL EXPLORATION
 Rig Name : OCEAN PATRIOT

POSITION
 Latitude : 38°02'46.32"S
 Longitude : 148°32'52.92"E
 X (m) : 620,701.1 mE
 Y (m) : 5,798,512.1 mN
 RT-LAT (m) : 21.5
 RT-Seabed (m) : 78.5

CASING
 508mm Shoe at (mMDRT) : 110.9
 340mm Shoe at (mMDRT) : XXXm

Spud Date : 16-10-2005
 Total Depth Date : XX-10-2005
 Total Depth (mRT) : XXXm
 T.V.D. (mSSLAT) : XXXXXm
 Status : STATUS

ABBREVIATIONS

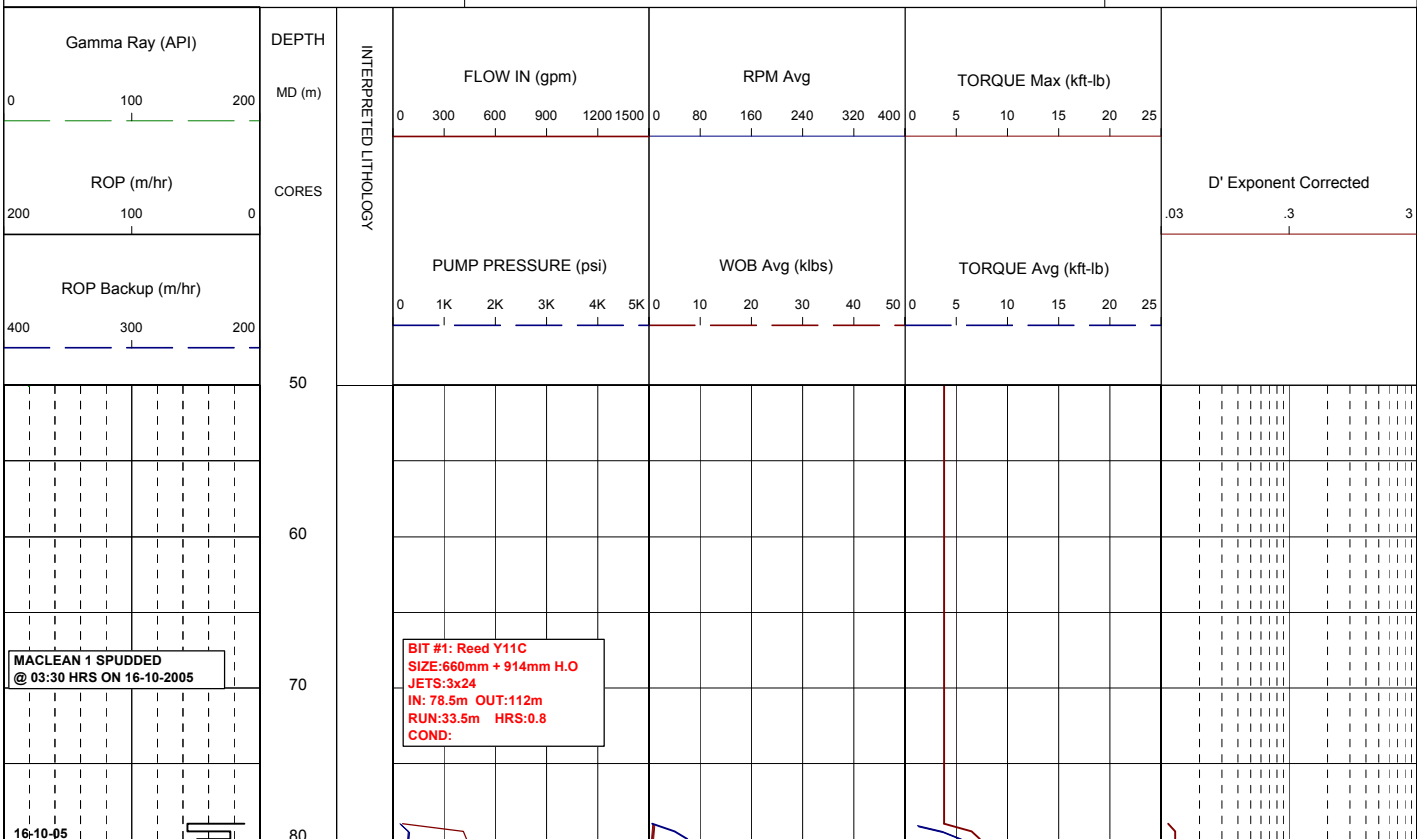
MW MUD WEIGHT	NB NEW BIT
FV FUNNEL VISCOSITY	RR RERUN BIT
PV PLASTIC VISCOSITY	CB CORE BIT
YP YIELD POINT	WOB WEIGHT ON BIT
FC FILTER CAKE	RPM REVS PER MINUTE
SOL SOLIDS	FLC FLOW CHECK
WL FILTRATE	CR CIRCULATE RETURNS
SD SAND - %	PR POOR RETURNS
S SALINITY - PPM	NR NO RETURNS
RM MUD RESISTIVITY	BG BACKGROUND GAS
RMF MUD FILTRATE	TG TRIP GAS
C CARBIDE TEST	STG SHORT TRIP GAS
LAT LOGGED AFTER TRIP	CG CONNECTION GAS
DS DEVIATION SURVEY	SG SWAB GAS
	SVG SURVEY GAS

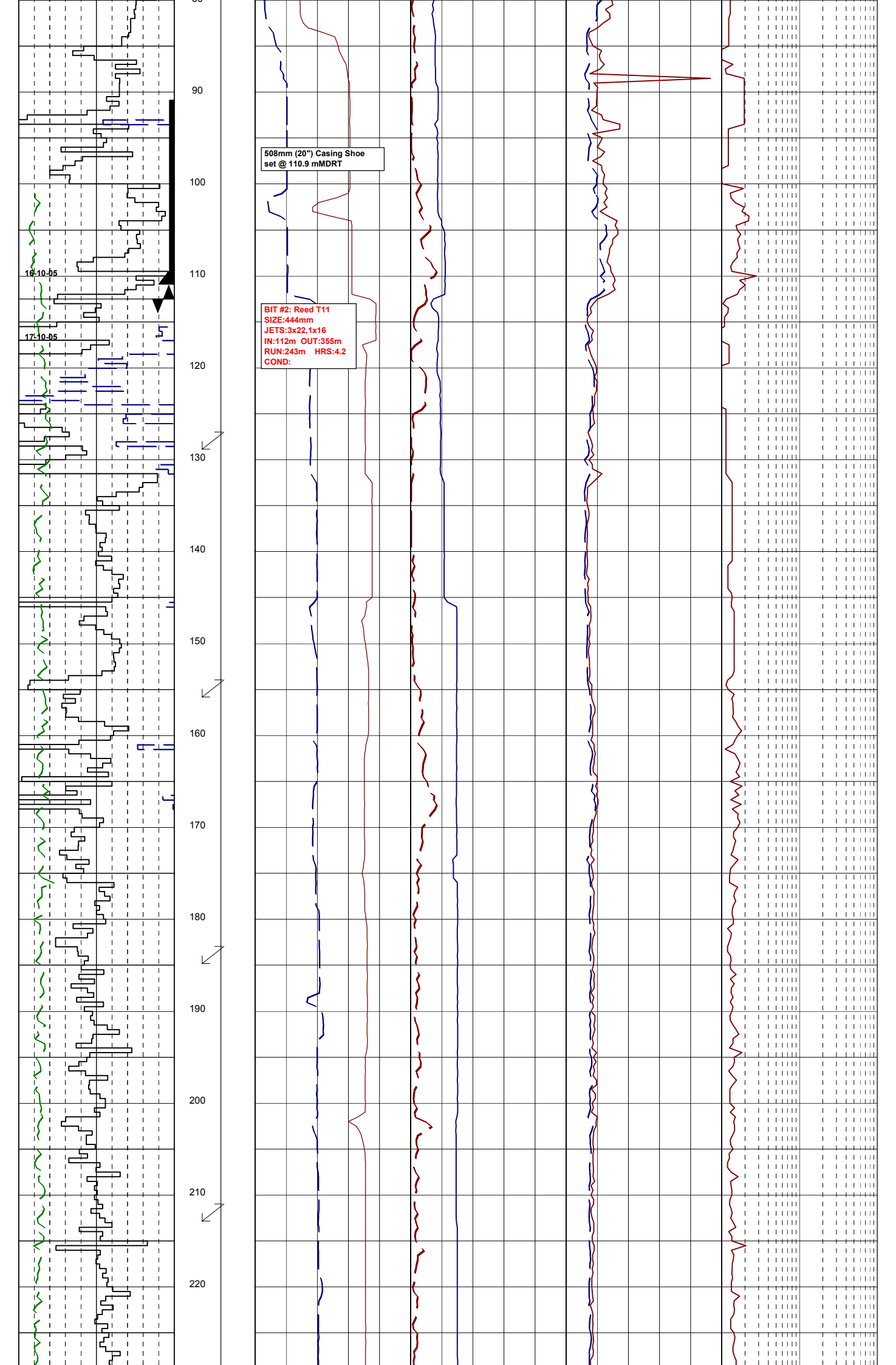
LITHOLOGY LEGEND

Limestone	Anhydrite	Pyrite
Med Sandstone	Coal	Glauconite
Fine Sandstone	Marl	Mica
Siltstone	Dolomite	Ferrous
Claystone	Carb. Siltstone	Fossils
Calcarenite	Calc Claystone	Calcareous
Calcsiltite	Lithic frag	Dolomitic
Calcilitite		Chert

ENGINEERING LEGEND

	Deviation Survey
	Casing Shoe
	Wiper Trip
	SWC (rec)
	SWC (unrec)
	Core
	Bit Trip





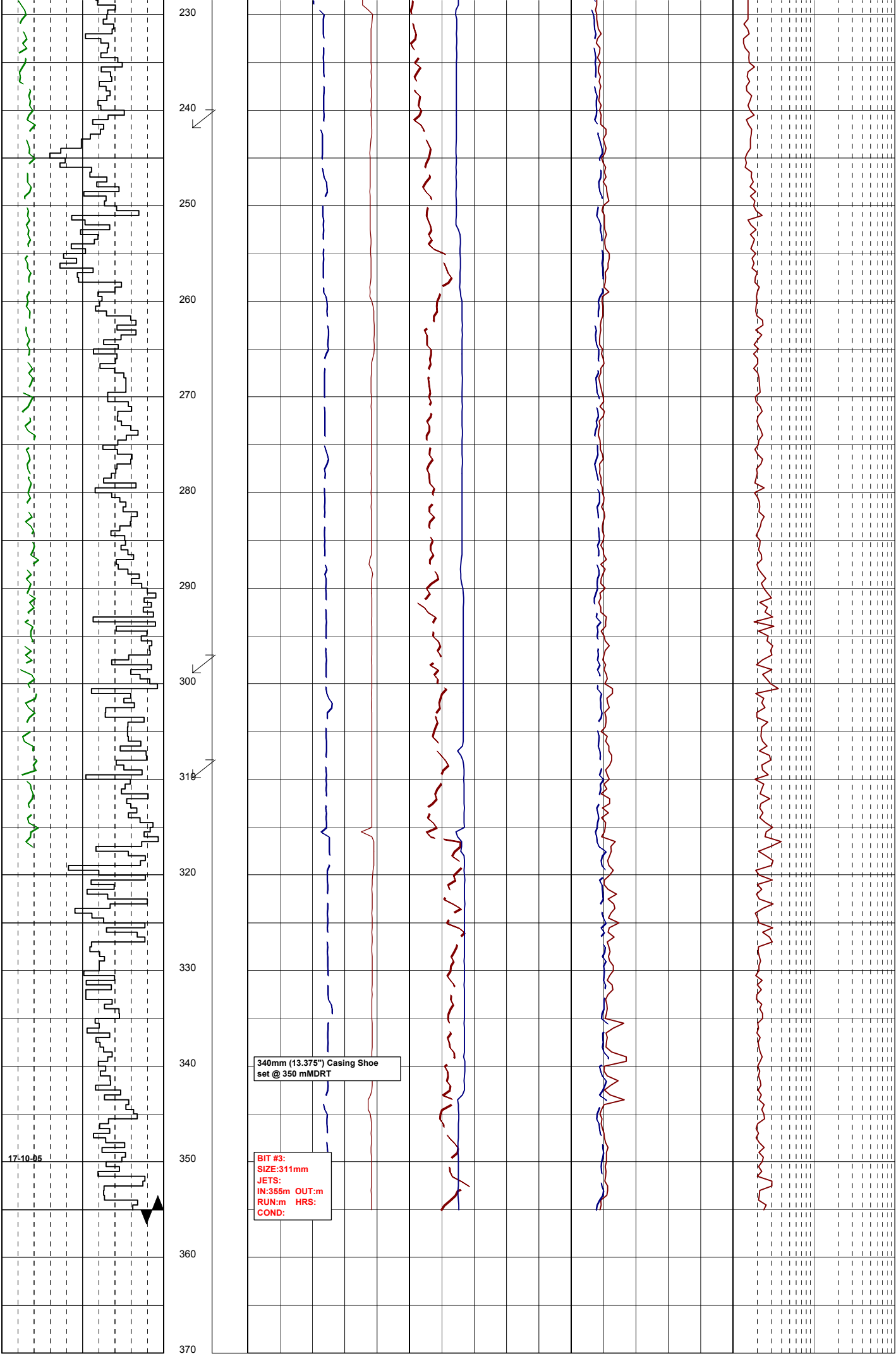
508mm (20") Casing Shoe
set @ 110.9 mMDRT

BIT #: Reed T11
SIZE:444mm
JETS:3x22.1x16
IN:112m OUT:355m
RUN:243m HRS:4.2
COND:

18-10-05

17-10-05

80
90
100
110
120
130
140
150
160
170
180
190
200
210
220



17-10-05

340mm (13.375") Casing Shoe
set @ 350 mMDRT

BIT #:
SIZE:311mm
JETS:
IN:355m OUT:m
RUN:m HRS:
COND:

230
240
250
260
270
280
290
300
310
320
330
340
350
360
370