



# DRILLING DATA PLOT



WELL : MACLEAN 1

FROM (m): 50 TO (m): 250 SCALE: 1/ 500

Country : AUSTRALIA  
 Region : VICTORIA  
 Field : GIPPSLAND BASIN  
 Permit : VIC/P-47  
 Well Type : VERTICAL EXPLORATION  
 Rig Name : OCEAN PATRIOT

**POSITION**  
 Latitude : 38°02'46.32"S  
 Longitude : 148°32'52.92"E  
 X (m) : 620,701.1 mE  
 Y (m) : 5,798,512.1 mN  
 RT-LAT (m) : 21.5  
 RT-Seabed (m) : 78.5

**CASING**  
 508mm Shoe at (mMDRT) : 110.9  
 340mm Shoe at (mMDRT) : XXXm

Spud Date : 16-10-2005  
 Total Depth Date : XX-10-2005  
 Total Depth (mRT) : XXXm  
 T.V.D. (mSSLAT) : XXXXXm  
 Status : STATUS

### ABBREVIATIONS

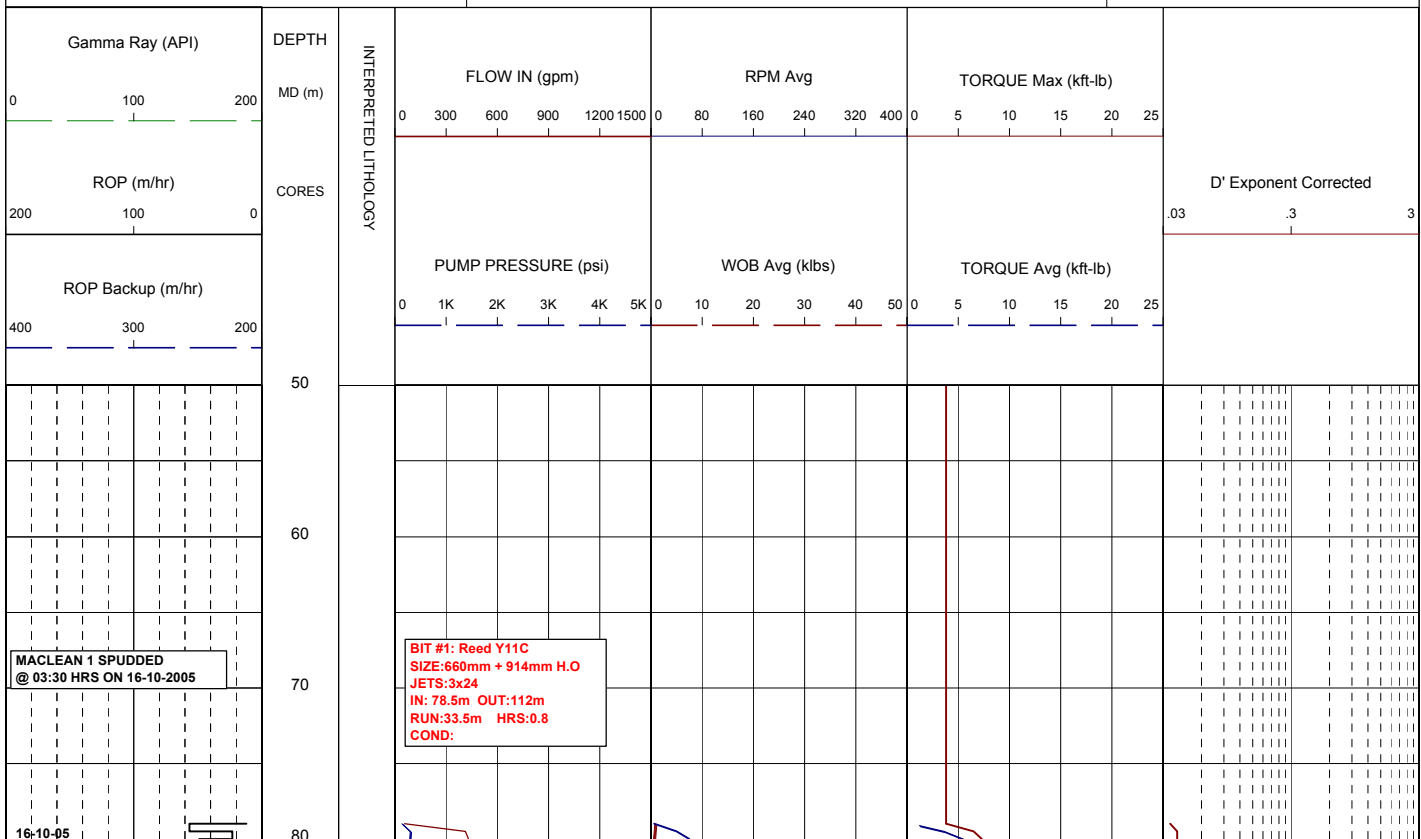
MW MUD WEIGHT	NB NEW BIT
FV FUNNEL VISCOSITY	RR RERUN BIT
PV PLASTIC VISCOSITY	CB CORE BIT
YP YIELD POINT	WOB WEIGHT ON BIT
FC FILTER CAKE	RPM REVS PER MINUTE
SOL SOLIDS	FLC FLOW CHECK
WL FILTRATE	CR CIRCULATE RETURNS
SD SAND - %	PR POOR RETURNS
S SALINITY - PPM	NR NO RETURNS
RM MUD RESISTIVITY	BG BACKGROUND GAS
RMF MUD FILTRATE	TG TRIP GAS
C CARBIDE TEST	STG SHORT TRIP GAS
LAT LOGGED AFTER TRIP	CG CONNECTION GAS
DS DEVIATION SURVEY	SG SWAB GAS
	SVG SURVEY GAS

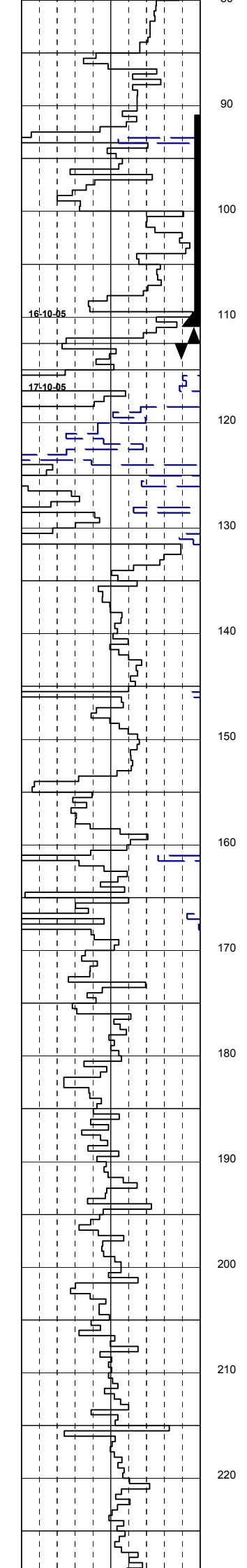
### LITHOLOGY LEGEND

Limestone	Anhydrite	Pyrite
Med Sandstone	Coal	Glaucanite
Fine Sandstone	Marl	Mica
Siltstone	Dolomite	Ferrous
Claystone	Carb. Siltstone	Fossils
Calcarenite	Calc Claystone	Calcareous
Calcsiltite	Lithic frag	Dolomitic
Calcilitite		Chert

### ENGINEERING LEGEND

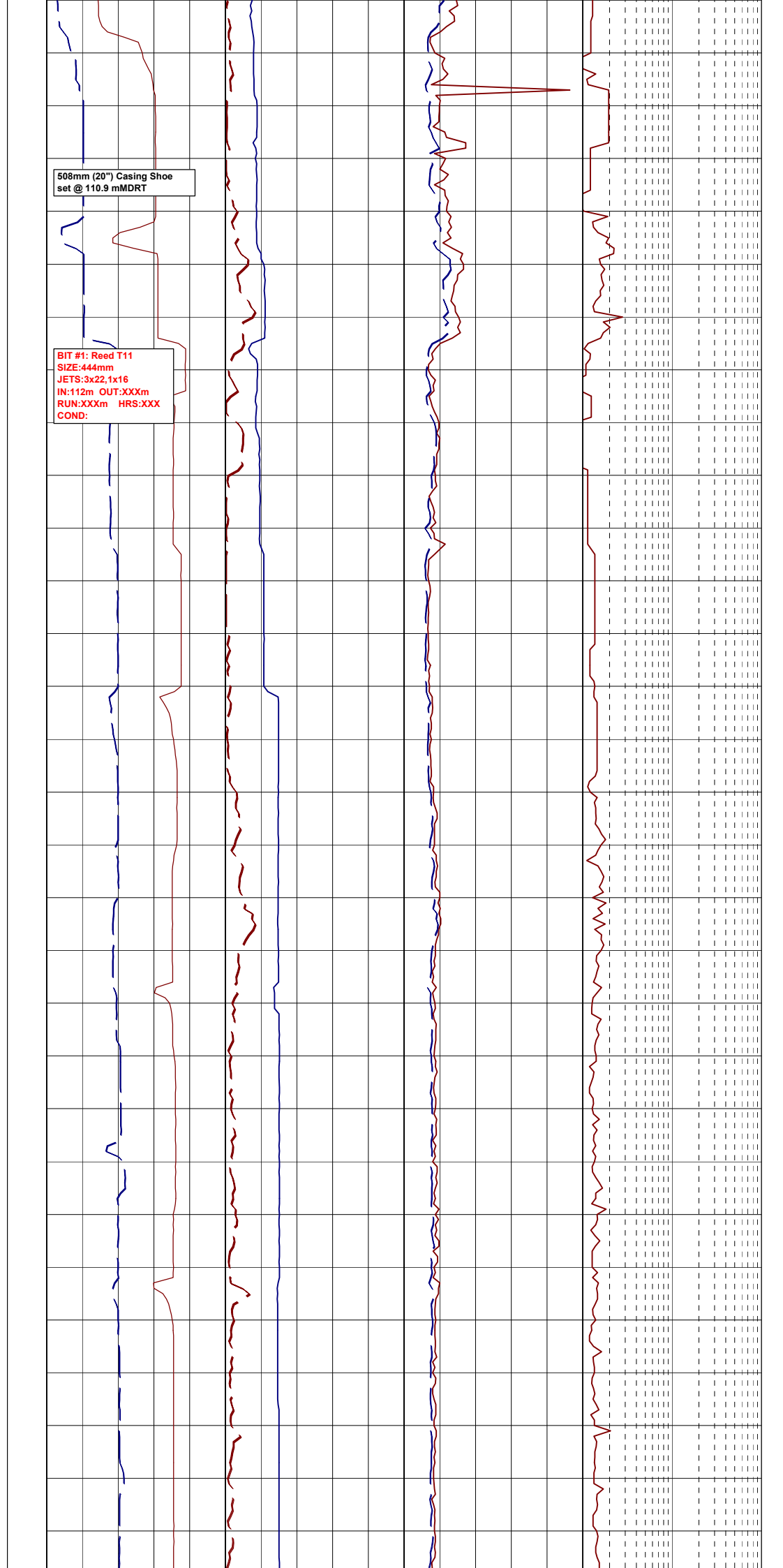
	Deviation Survey
	Casing Shoe
	Wiper Trip
	SWC (rec)
	SWC (unrec)
	Core
	Bit Trip

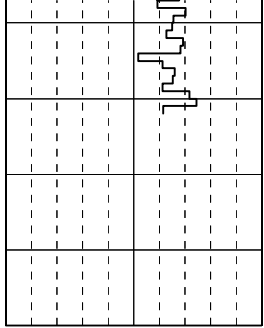




508mm (20") Casing Shoe  
set @ 110.9 mMDRT

BIT #: Reed T11  
SIZE:444mm  
JETS:3x22.1x16  
IN:112m OUT:XXXm  
RUN:XXXm HRS:XXX  
COND:





230  
240  
250

