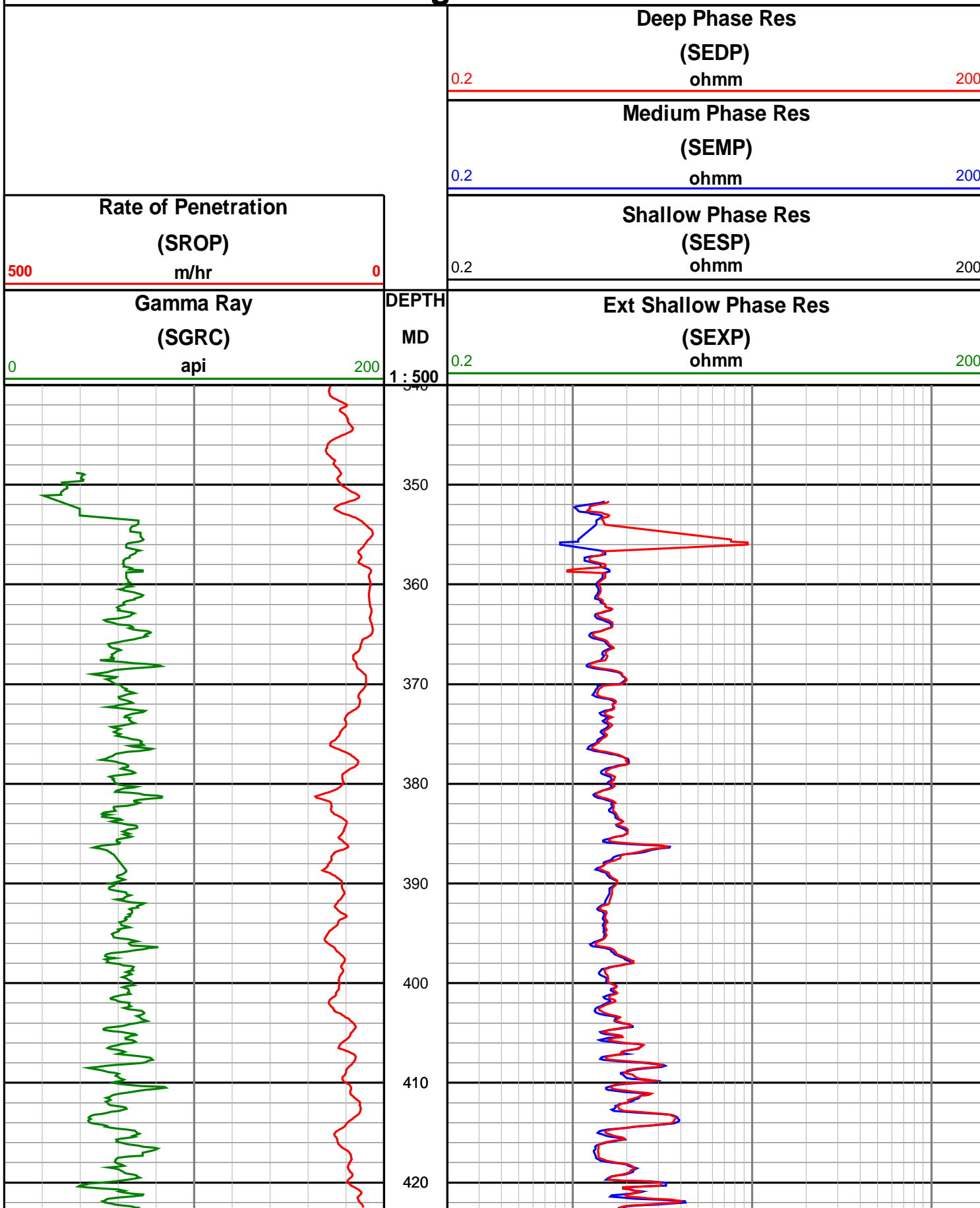
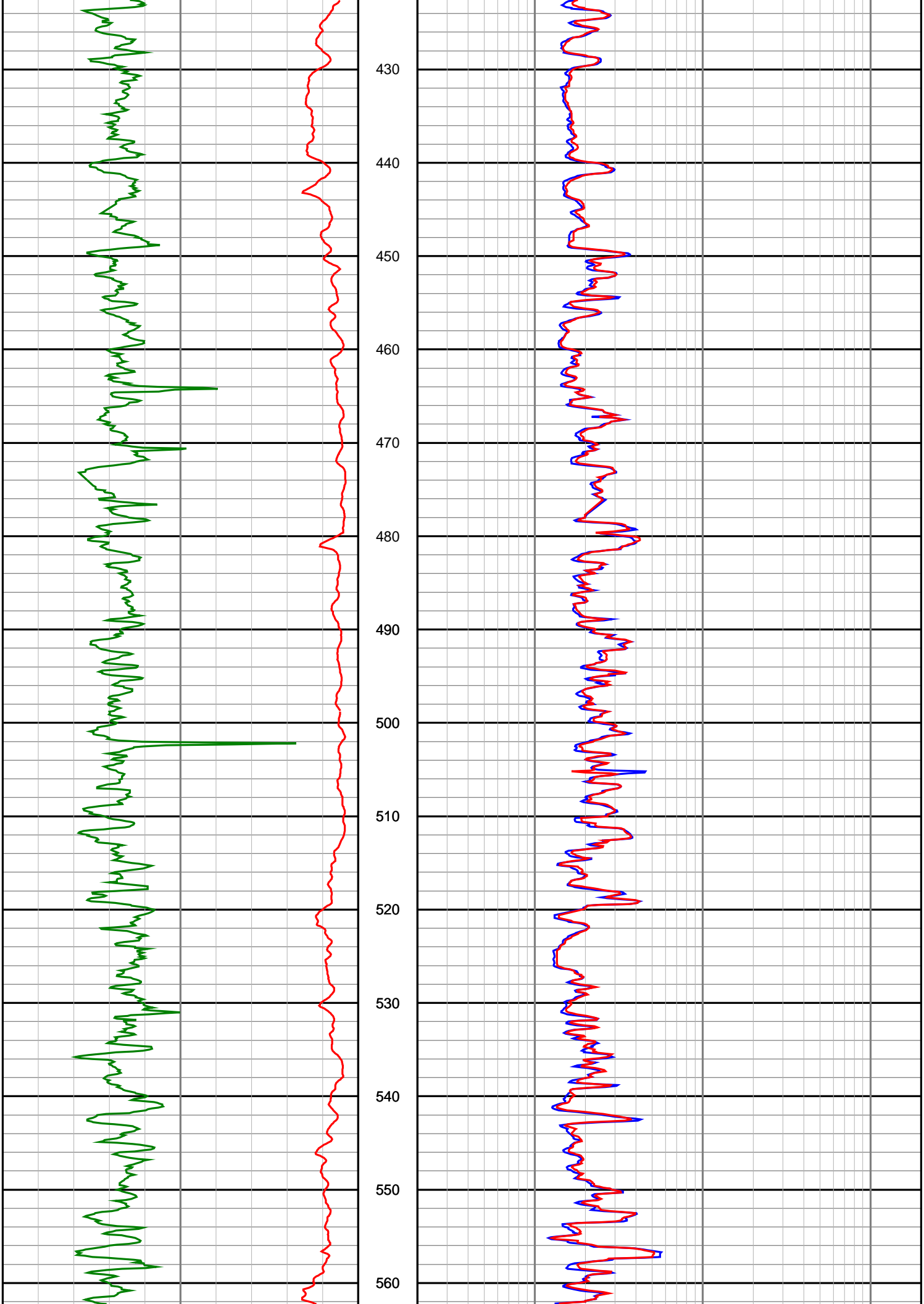


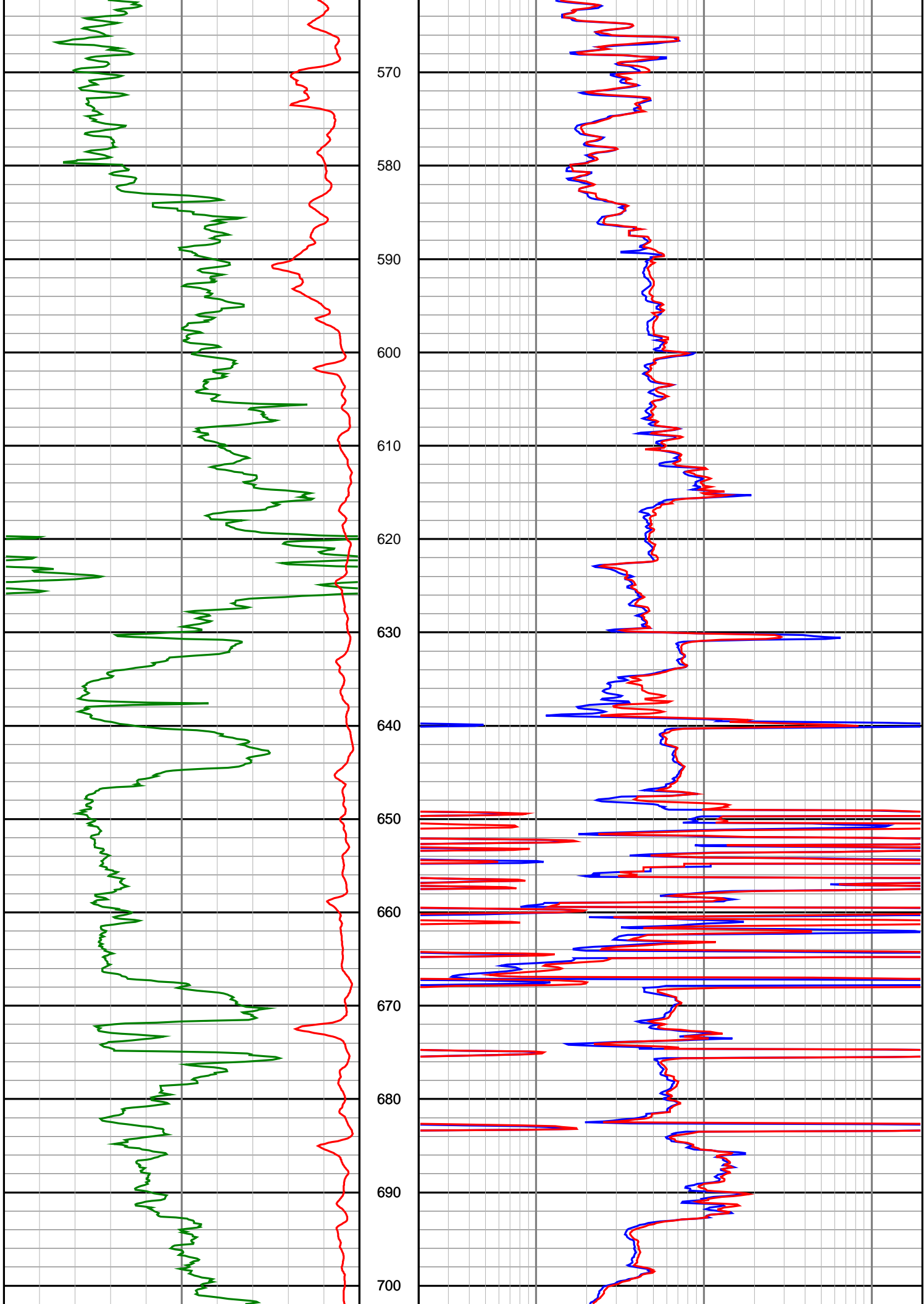
Bass Strait Oil Company Ltd.

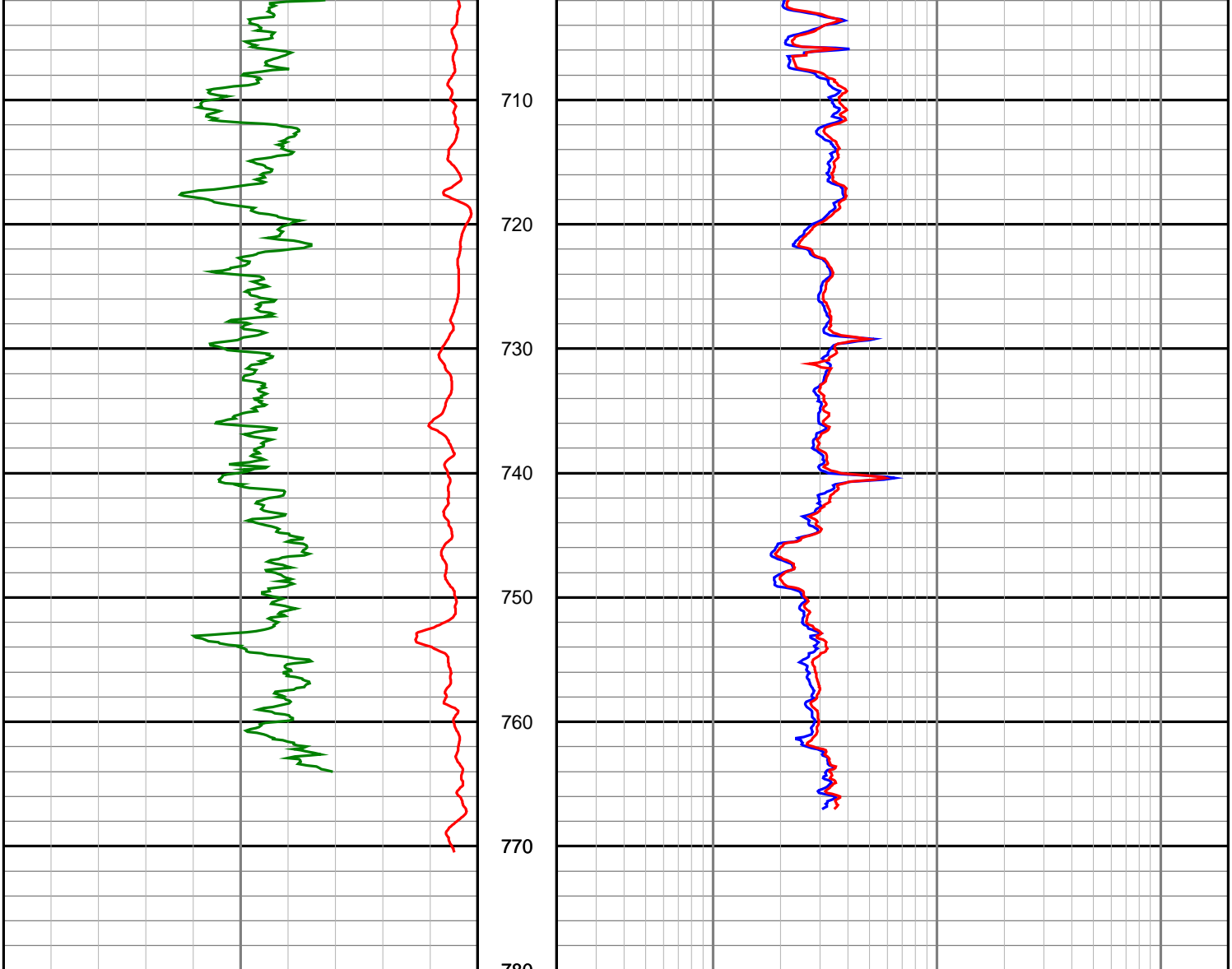
Maclean-1

Realtime LWD Log - 12 1/4" Hole Section









<p>Gamma Ray (SGRC) api</p> <p>0 200</p>	<p>DEPTH MD 1 : 500</p>	<p>Ext Shallow Phase Res (SEXP) ohmm</p> <p>0.2 200</p>
<p>Rate of Penetration (SROP) m/hr</p> <p>500 0</p>		<p>Shallow Phase Res (SESP) ohmm</p> <p>0.2 200</p>
		<p>Medium Phase Res (SEMP) ohmm</p> <p>0.2 200</p>
		<p>Deep Phase Res (SEDP) ohmm</p> <p>0.2 200</p>