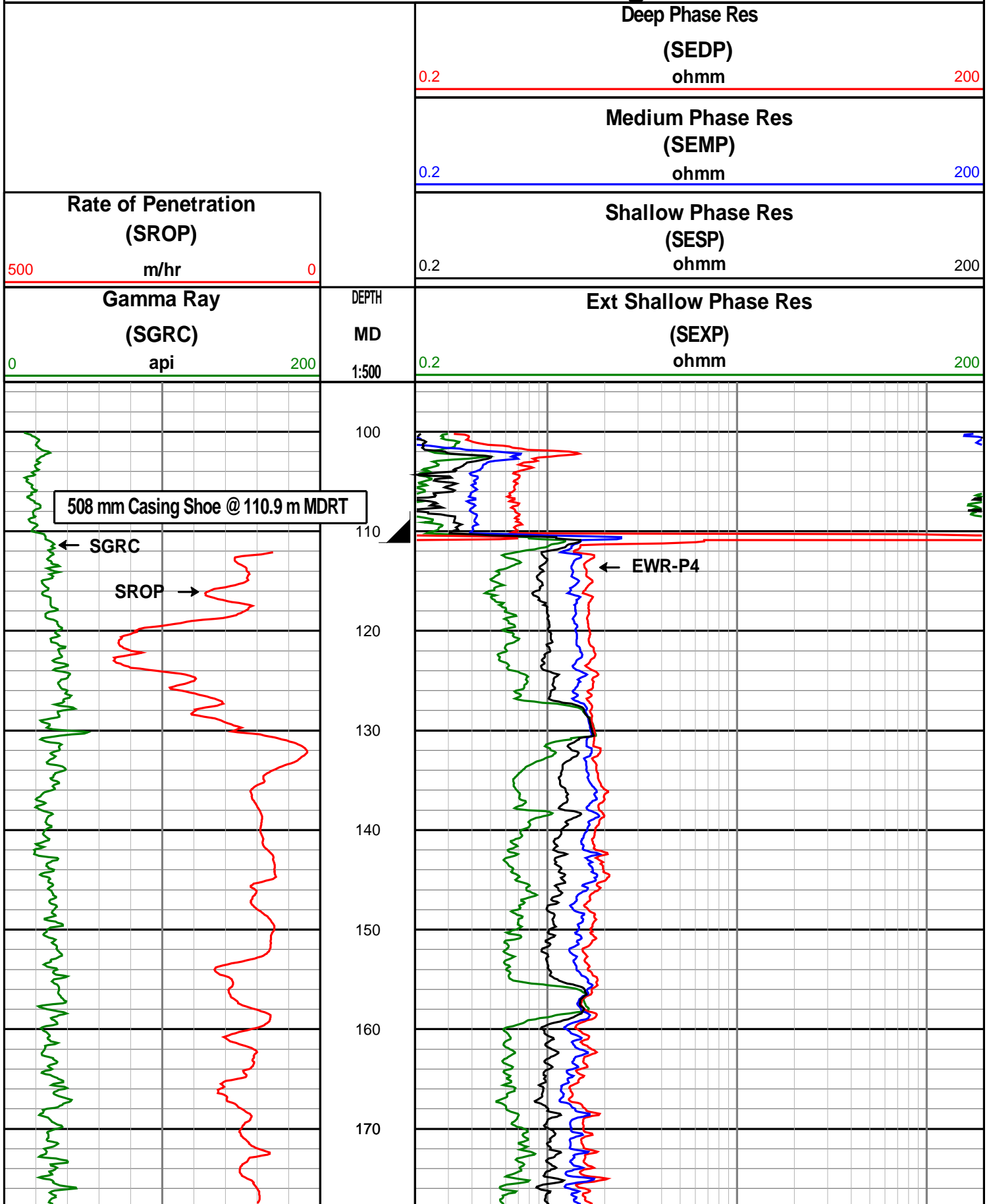
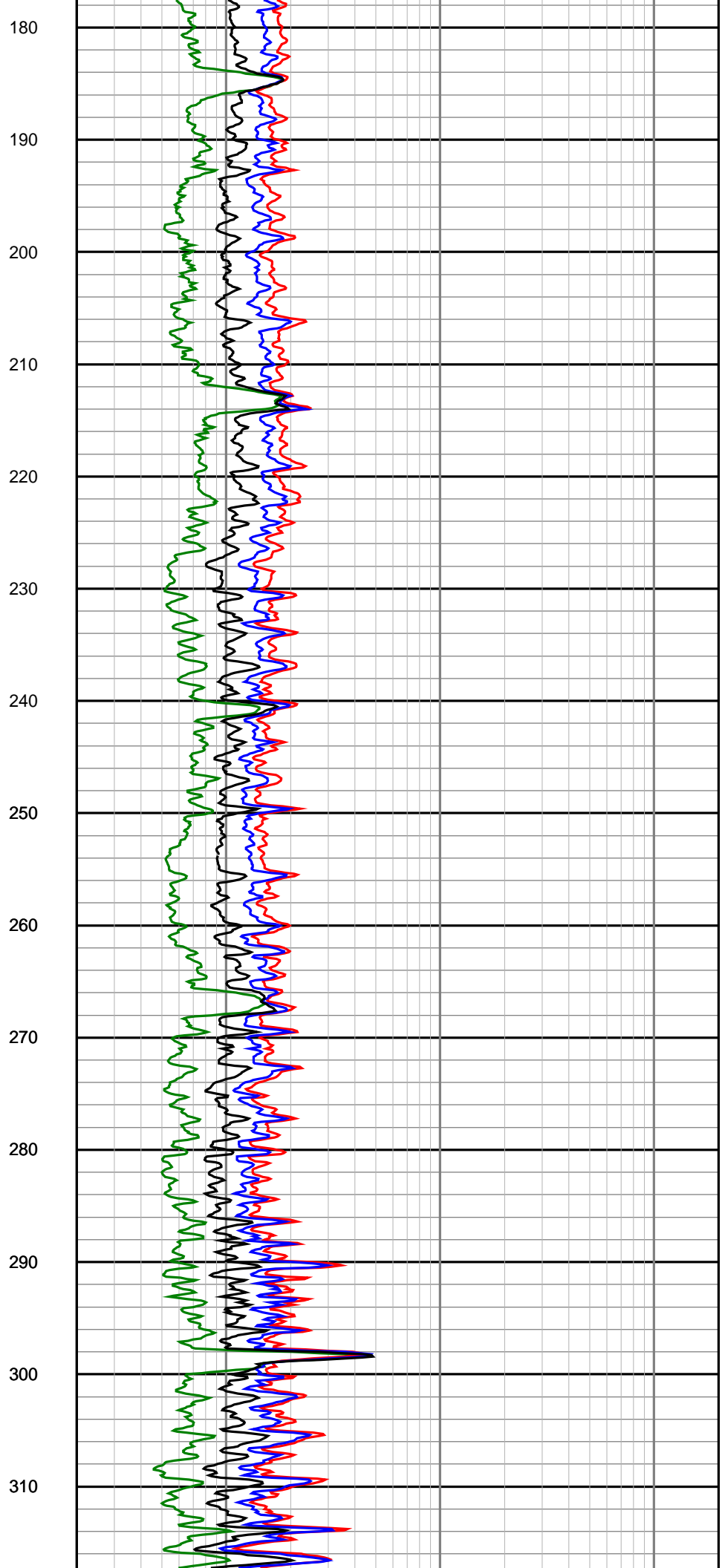
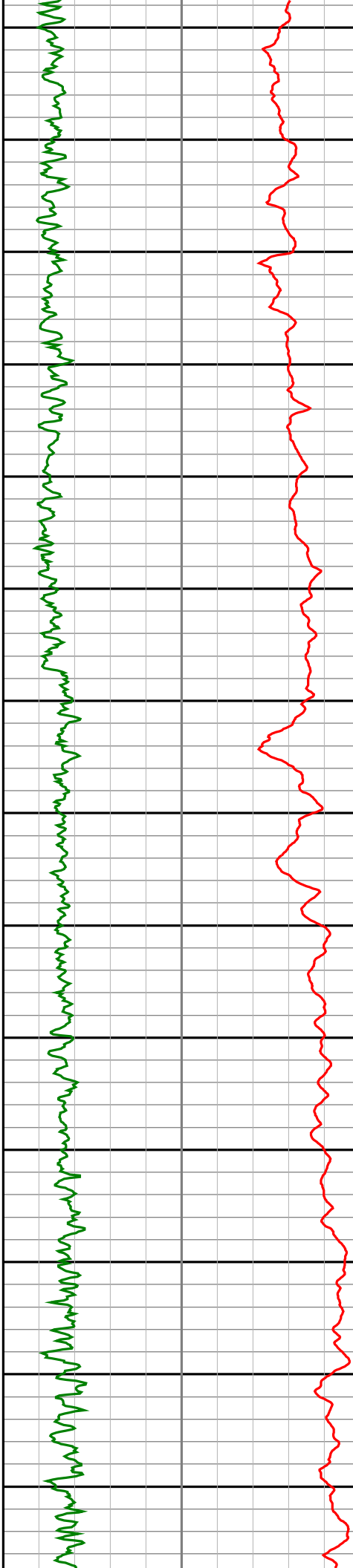


Bass Strait Oil Company Ltd.

Maclean-1

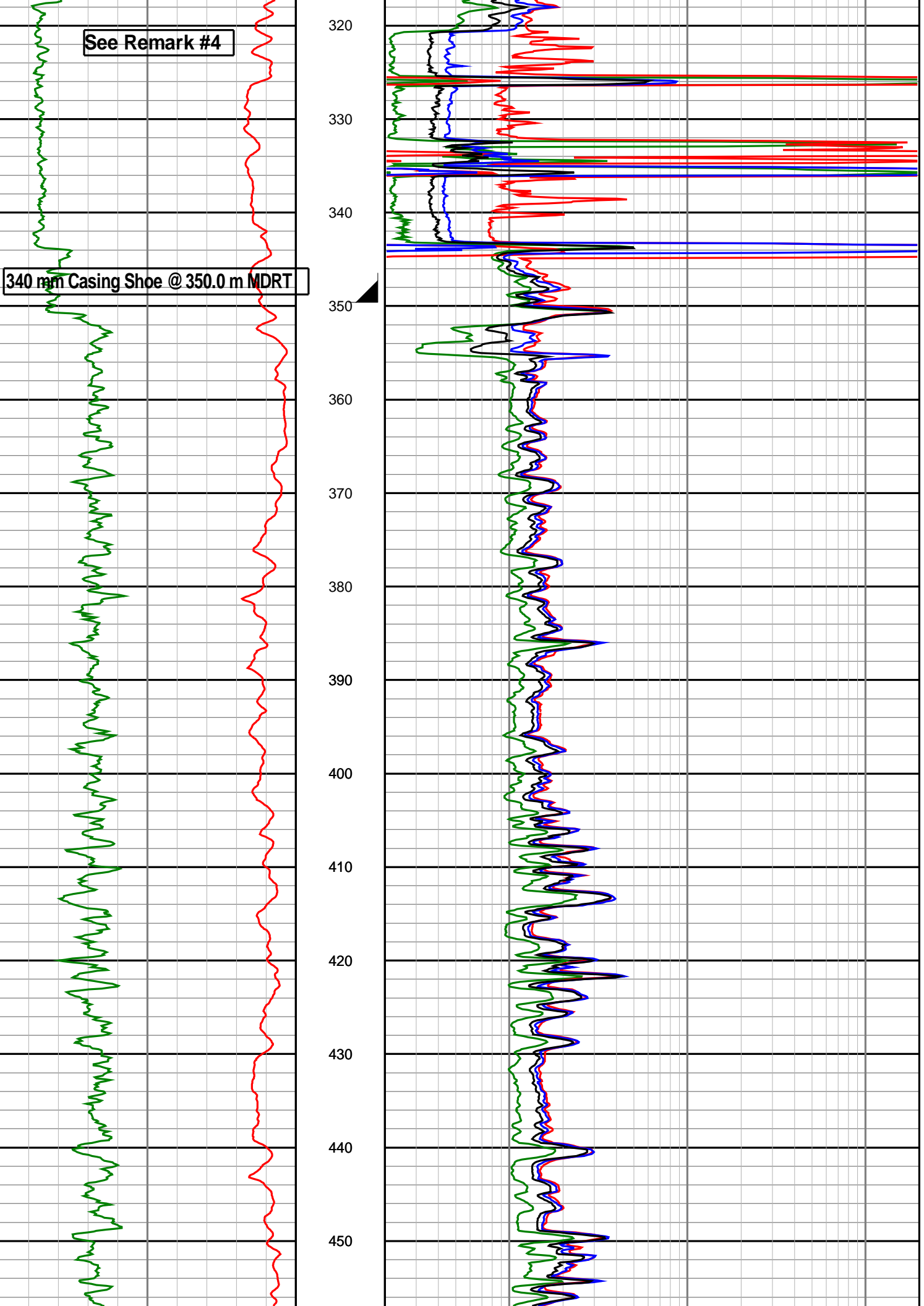
Recorded LWD Log

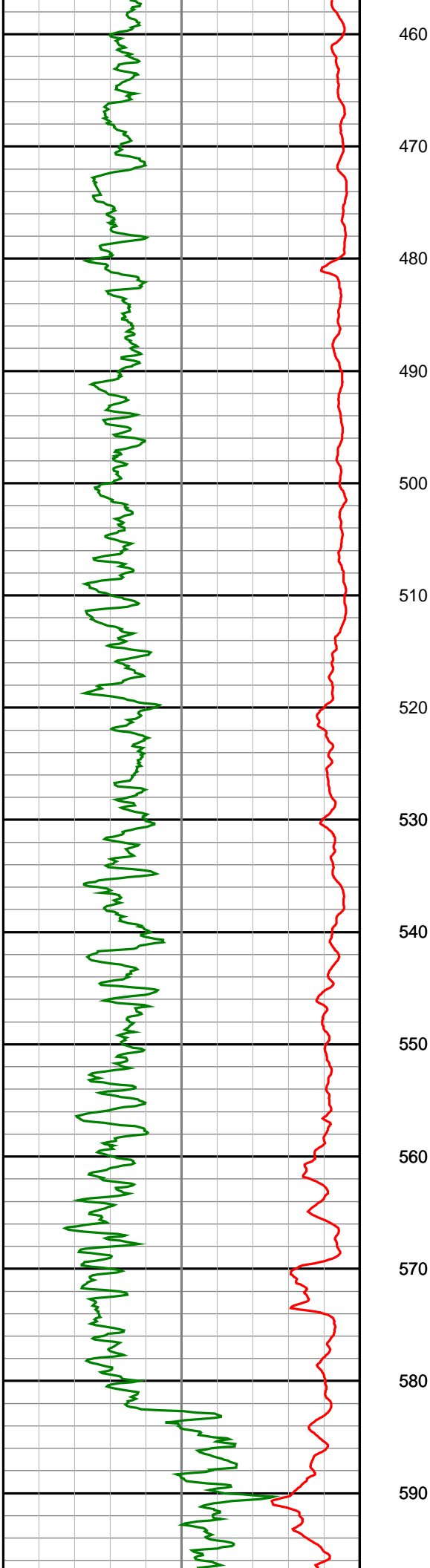




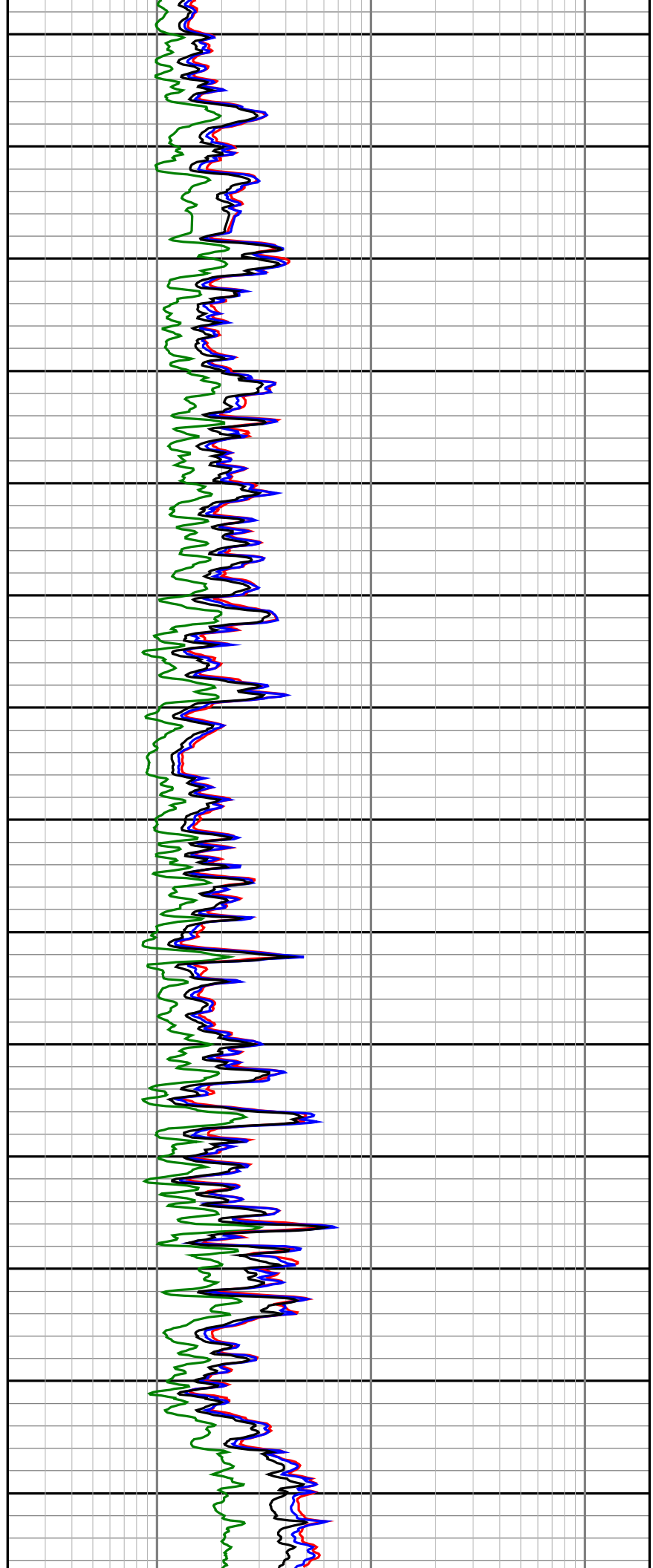
See Remark #4

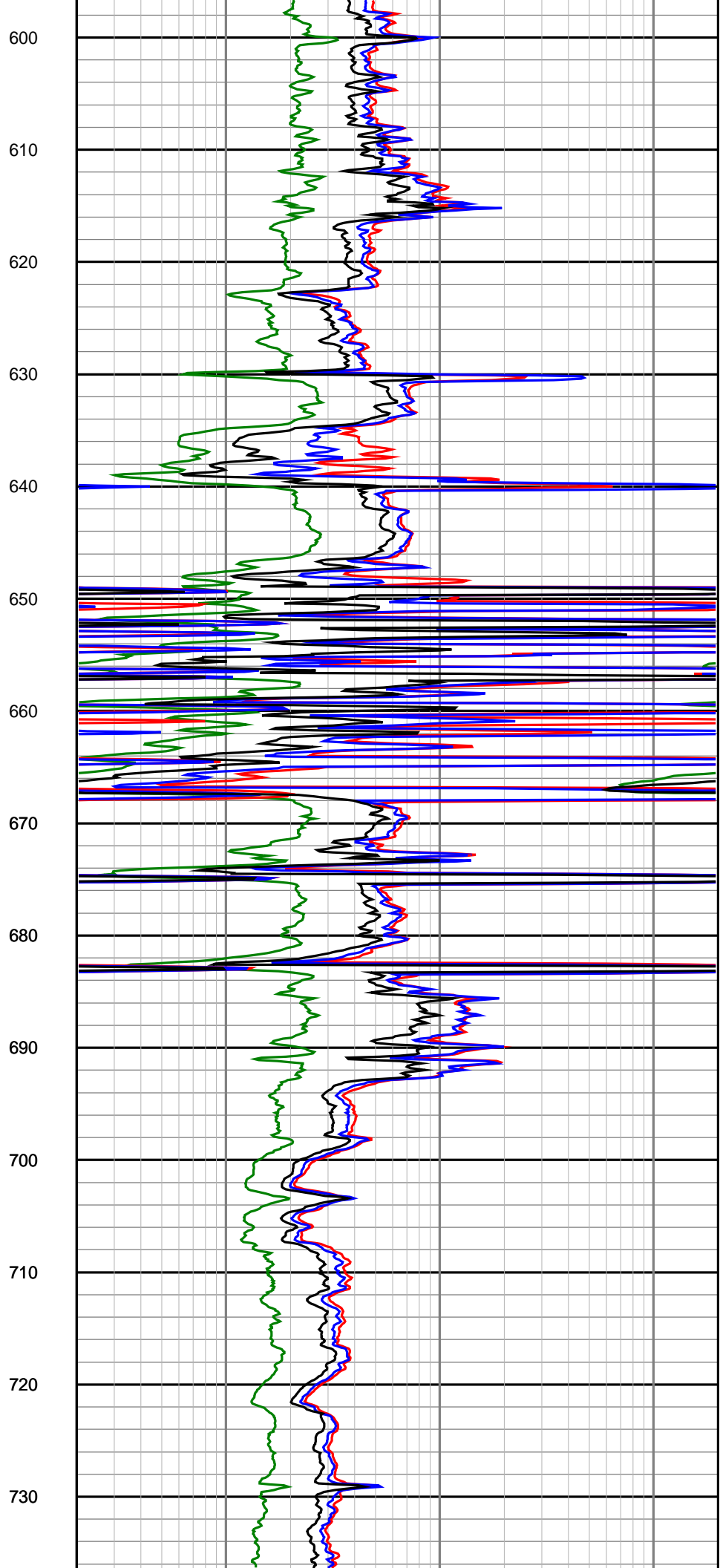
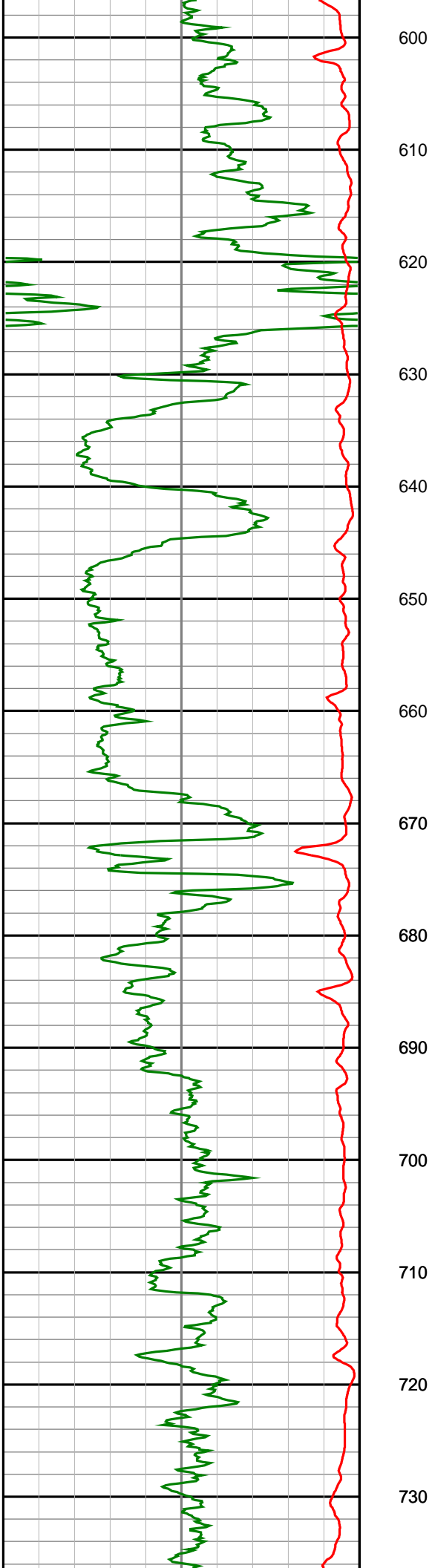
340 mm Casing Shoe @ 350.0 m MDRT

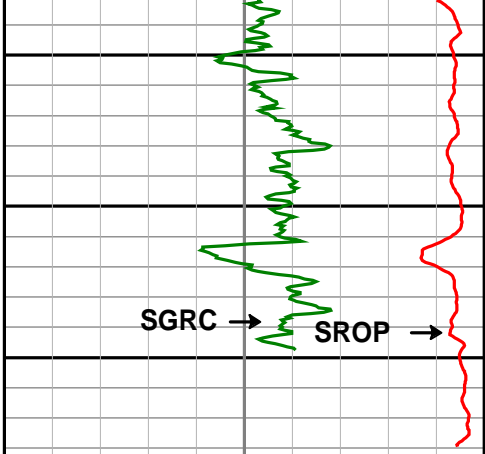




460
470
480
490
500
510
520
530
540
550
560
570
580
590



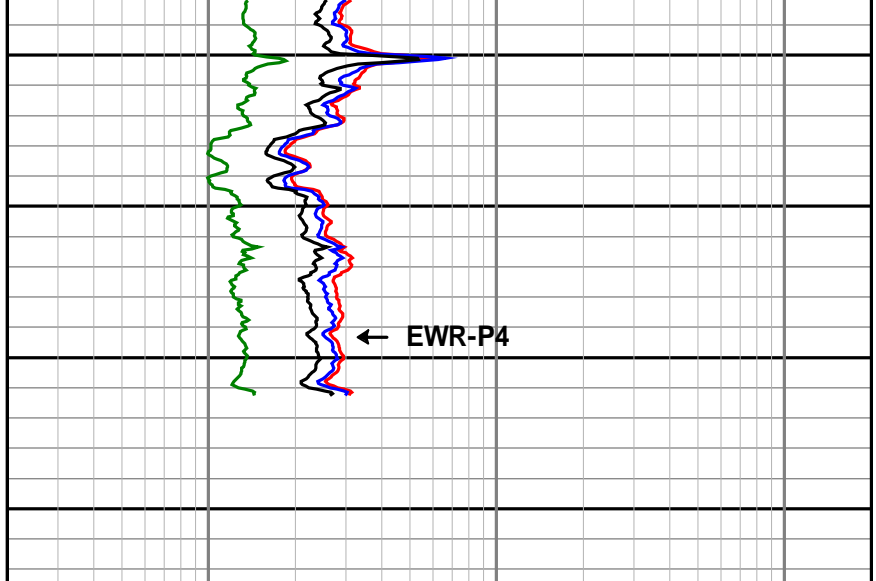




740
750
760
770

SGRC → SROP →

TD Maclean-1 @ 766.0 mMDRT



← EWR-P4

<p>Gamma Ray (SGRC) api</p> <p>0 200</p>	<p>DEPTH MD 1:500</p>	<p>Ext Shallow Phase Res (SEXP) ohmm</p> <p>0.2 200</p>
<p>Rate of Penetration (SROP) m/hr</p> <p>500 0</p>		<p>Shallow Phase Res (SESP) ohmm</p> <p>0.2 200</p>
		<p>Medium Phase Res (SEMP) ohmm</p> <p>0.2 200</p>
		<p>Deep Phase Res (SEDP) ohmm</p> <p>0.2 200</p>