



DRILLING DATA PLOT

WELL : MACLEAN 1



FROM (m): 50 TO (m): 780 SCALE: 1/ 1000

Country : AUSTRALIA Region : VICTORIA Field : GIPPSLAND BASIN Permit : VIC/P-47 Well Type : VERTICAL EXPLORATION Rig Name : OCEAN PATRIOT	POSITION Latitude : 38°02'46.32"S Longitude : 148°32'52.92"E X (m) : 635,831.9 mE Y (m) : 5,787,927.9 mN RT-LAT (m) : 21.5 RT-Seabed (m) : 78.5	CASING 508mm Shoe at (mMDRT) : 110.9m 340mm Shoe at (mMDRT) : 350.0m	Spud Date : 16-10-2005 Total Depth Date : 20-10-2005 Total Depth (mRT) 766.0m T.V.D. (mSSLAT) : 744.50m Status : P&A
--	--	---	---

ABBREVIATIONS

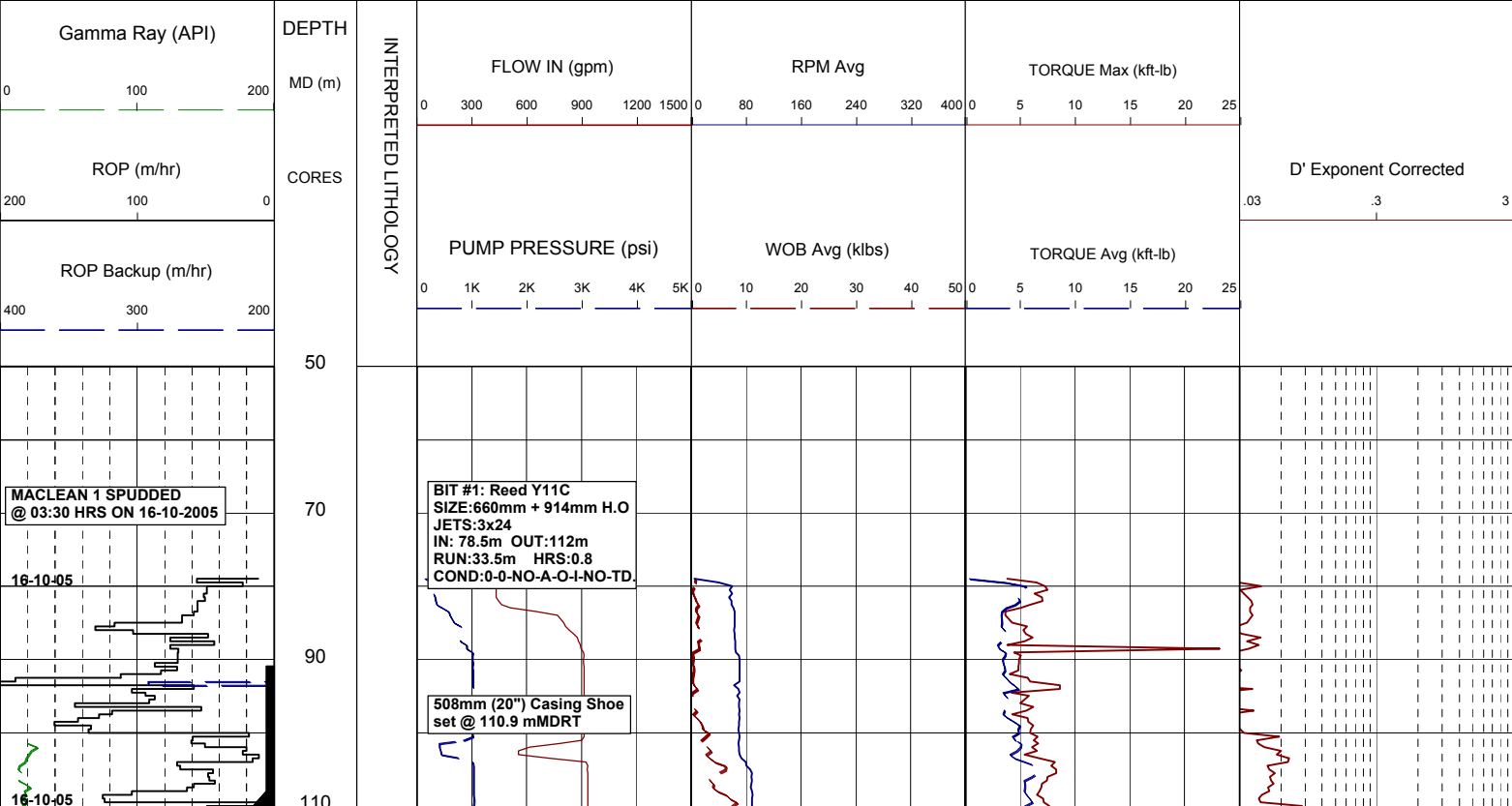
MW MUD WEIGHT	NB NEW BIT
FV FUNNEL VISCOSITY	RR RERUN BIT
PV PLASTIC VISCOSITY	CB CORE BIT
YP YIELD POINT	WOB WEIGHT ON BIT
FC FILTER CAKE	RPM REVS PER MINUTE
SOL SOLIDS	FLC FLOW CHECK
WL FILTRATE	CR CIRCULATE RETURNS
SD SAND - %	PR POOR RETURNS
S SALINITY - PPM	NR NO RETURNS
RM MUD RESISTIVITY	BG BACKGROUND GAS
RMF MUD FILTRATE	TG TRIP GAS
C CARBIDE TEST	STG SHORT TRIP GAS
LAT LOGGED AFTER TRIP	CG CONNECTION GAS
DS DEVIATION SURVEY	SG SWAB GAS
	SVG SURVEY GAS

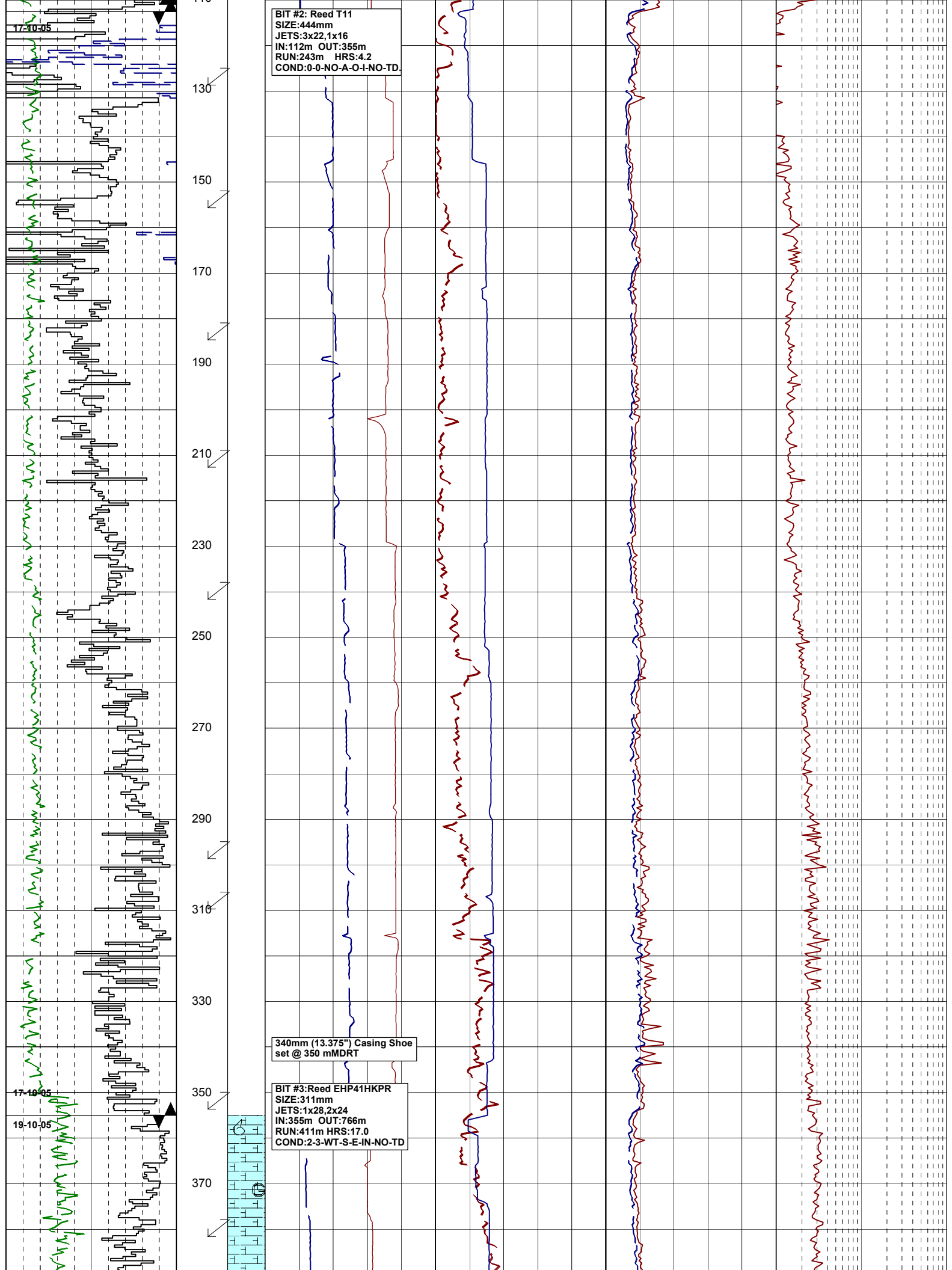
LITHOLOGY LEGEND

Limestone	Anhydrite	Pyrite
Med Sandstone	Coal	Glaucanite
Fine Sandstone	Marl	Mica
Siltstone	Dolomite	Ferrous
Claystone	Carb. Siltstone	Fossils
Calcarenite	Calc Claystone	Calcareous
Calcisiltite	Lithic frag	Dolomitic
Calclutite		Chert

ENGINEERING LEGEND

	Deviation Survey
	Casing Shoe
	Wiper Trip
	SWC (rec)
	SWC (unrec)
	Core
	Bit Trip





BIT #2: Reed T11
SIZE:444mm
JETS:3x22,1x16
IN:112m OUT:355m
RUN:243m HRS:4.2
COND:0-0-NO-A-O-I-NO-TD

340mm (13.375") Casing Shoe
set @ 350 mMDRT

BIT #3:Reed EHP41HKPR
SIZE:311mm
JETS:1x28,2x24
IN:355m OUT:766m
RUN:411m HRS:17.0
COND:2-3-WT-S-E-IN-NO-TD

17-10-05

17-10-05

19-10-05

130

150

170

190

210

230

250

270

290

310

330

350

370

