

Company: Esso Australia Pty Ltd

Well: MKA A22
Field: Mackereel
Rig: Rig 22/Prod 2

Country: Australia

Rig: Rig 22/Prod 2
Field: Mackereel
Location: Bass Strait
Well: MKA A22
Company: Esso Australia Pty Ltd

UPCT
Correlation
08-Dec-2009

LOCATION	Bass Strait	Elev.: K.B. 39.50 m
	Gippsland	G.L. -93.00 m
	Basin	D.F. 39.50 m
Permanent Datum: MSL		
Log Measured From: D.F.		
Drilling Measured From: K.B.		
Elev.: 0.00 m		
39.50 m above Perm. Datum		

State: Victoria	Max. Well Deviation 67 deg	Longitude 148° 20' 28.54" E	Latitude 038° 28'50.13" S
-----------------	----------------------------	-----------------------------	---------------------------

Logging Date 8-Dec-2009

Run Number 1

Depth Driller 1925 m

Schlumberger Depth 1915 m

Bottom Log Interval 1915 m

Top Log Interval 1800 m

Casing Fluid Type Inhibited Sea Water

Salinity

Density 8.55 g/cm3

Fluid Level 0 m

BIT/CASING/TUBING STRING

Bit Size 16,000 in

From 21 m

To 2098.1 m

Casing/Tubing Size 13.375 in

Weight 54.4 lbm/ft

Grade K-55

From 21 m

To 2098.1 m

Maximum Recorded Temperatures

Logger On Bottom 8-Dec-2009

Unit Number 3827

Recorded By M.Pratt, S. Gilbert

Witnessed By M Wilson , A Smyth

Run 1

Oil Density
Water Salinity
Gas Gravity
Bo

Bw

1/Bg

Bubble Point Pressure

Bubble Point Temperature

Solution GOR

Maximum Deviation 67 deg

CEMENTING DATA

Primary/Squeeze Primary

Casing String No

Lead Cement Type

Volume

Density

Water Loss

Additives

Tail Cement Type

Volume

Density

Water Loss

Additives

Expected Cement Top

Logging Date

Run Number

Depth Driller

Schlumberger Depth

Bottom Log Interval

Top Log Interval

Casing Fluid Type

Salinity

Density

Fluid Level

BIT/CASING/TUBING STRING

Bit Size

From

To

Casing/Tubing Size

Weight

Grade

From

To

Maximum Recorded Temperatures

Logger On Bottom 8-Dec-2009

Unit Number 3827

Recorded By M.Pratt, S. Gilbert

Witnessed By M Wilson , A Smyth

DEPTH SUMMARY LISTING

Date Created: 7-DEC-2009 11:29:31

Depth System Equipment

Depth Measuring Device	Tension Device	Logging Cable
Type: IDW-C Serial Number: 797 Calibration Date: 11-Sep-09 Calibrator Serial Number: 30 Calibration Cable Type: 2-32ZT Wheel Correction 1: -2 Wheel Correction 2: -2	Type: CMTD-B/A Serial Number: 1711 Calibration Date: 7-DEC-2009 Calibrator Serial Number: 1173 Number of Calibration Points: 0	Type: 2-32ZT Serial Number: 24187 Length: 6043 M Conveyance Method: Wireline Rig Type: Offshore Fixed

Depth Control Parameters

Log Sequence:	Subsequent Log In the Well
Reference Log Name:	UNKNOWN
Reference Log Run Number:	UNKNOWN
Reference Log Date:	UNKNOWN

Depth Control Remarks

1. Log correlated to Exxon Mobile tubing Tally incorporated in approved program
2. IDW used as primary depth control
3. Z-chart used as backup.
4. CMTD calibration: a=1.32E-5, B=0.8513, & C=2.868
5. .
6.

DISCLAIMER

THE USE OF AND RELIANCE UPON THIS RECORDED-DATA BY THE HEREIN NAMED COMPANY (AND ANY OF ITS AFFILIATES, PARTNERS, REPRESENTATIVES, AGENTS, CONSULTANTS AND EMPLOYEES) IS SUBJECT TO THE TERMS AND CONDITIONS AGREED UPON BETWEEN SCHLUMBERGER AND THE COMPANY, INCLUDING: (a) RESTRICTIONS ON USE OF THE RECORDED-DATA; (b) DISCLAIMERS AND WAIVERS OF WARRANTIES AND REPRESENTATIONS REGARDING COMPANY'S USE OF AND RELIANCE UPON THE RECORDED-DATA; AND (c) CUSTOMER'S FULL AND SOLE RESPONSIBILITY FOR ANY INFERENCE DRAWN OR DECISION MADE IN CONNECTION WITH THE USE OF THIS RECORDED-DATA.

OTHER SERVICES1
OS1: 2.5" Power Cutter
OS2:
OS3:
OS4:
OS5:
REMARKS: RUN NUMBER 1
Log correlated to Tubing Tally / Pipe Tally provided by client.
Objective: Depth Determination / CCL / Gamma-Ray Survey
Maximum Deviation = 67.29deg @ 1760m MDKB
CCL to Bottom of tool = 1.4m
HUD Tagged @ 1915m MDKB
HUC to 1st Casing Collar = 8.4 m

Days: D. Watts, A Pratt





Nights: P Battams , G Blandford

RUN 1					
SERVICE ORDER #:		4500596663			
PROGRAM VERSION:		17C0-154			
FLUID LEVEL:		0 m			
LOGGED INTERVAL	START	STOP	LOGGED INTERVAL	START	STOP

EQUIPMENT DESCRIPTION

RUN 1

RUN 2

SURFACE EQUIPMENT					
WITM (SHM)					
DOWNHOLE EQUIPMENT					
MH-22 MH-22		6.64			
AH-38		6.16			
EQF-43 EQF-43 201		6.07			
EQF-43 EQF-43		4.25			

UPCT-A
UPCC-A 304
UPCH-A 304

Gamma Ray

0.79

2.42

Casing Co
Tension

TOOL ZERO

AH-2.5" Roller Stem
AH-2.5" Roller Stem

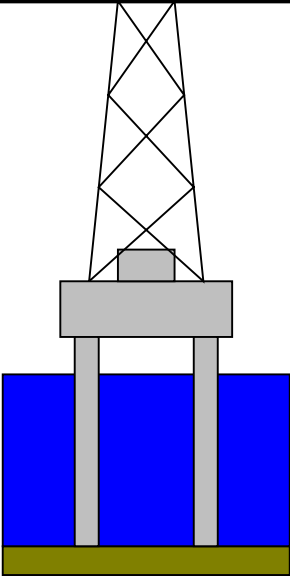
1.05

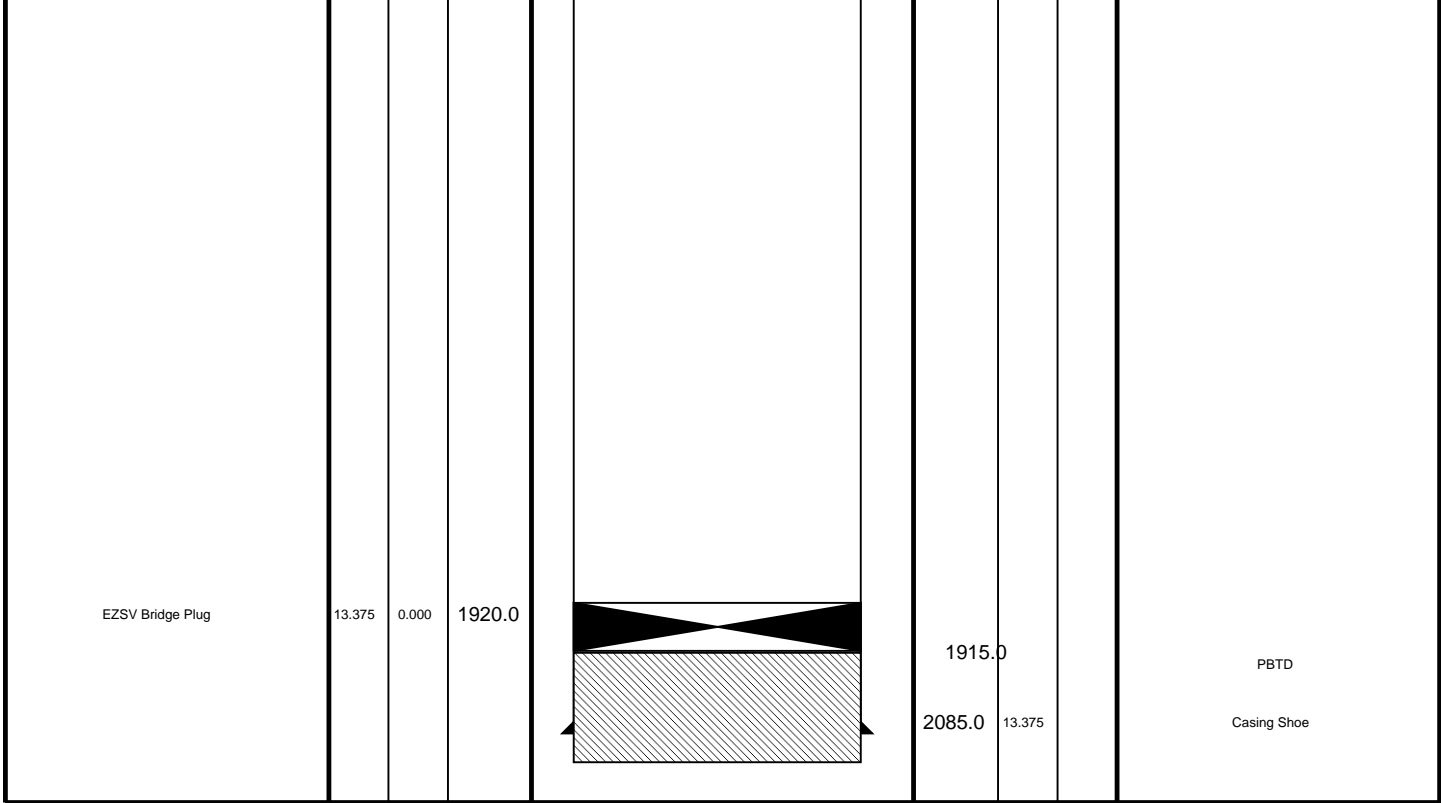
SHM_GUN

TOOL BOTTOM

0.00

MAXIMUM STRING DIAMETER 2.50 IN
MEASUREMENTS RELATIVE TO TOOL ZERO
ALL LENGTHS IN METERS

Production String	(in)		(m)	Well Schematic	(m)	(in)		Casing String
	OD	ID	MD		MD	OD	ID	
Drill rig floor to Hanger = 20.48m Work over rig floor elevation = 15.5m from hanger 4.98m offset added at the Rig floor Mean Sea Level			39.5 39.5 0.0					
					21.0	13.375		Casing String



Job Events Summary

MAXIS Field Log

Schlumberger Job Event Summary				
	Time	Elapsed Time	Depth (M)	File
Log Pass (up)	8-Dec-2009 12:35	000:13	1916.9 - 1795.1	PERFO_037LUP



GR – CCL Log from

MAXIS Field Log

Company: Esso Australia Pty Ltd

Well: MKA A22

Input DLIS Files

DEFAULT	PERFO_037LUP	FN:35	PRODUCER	08-Dec-2009 12:35	1916.9 M	1795.1 M
---------	--------------	-------	----------	-------------------	----------	----------

Output DLIS Files

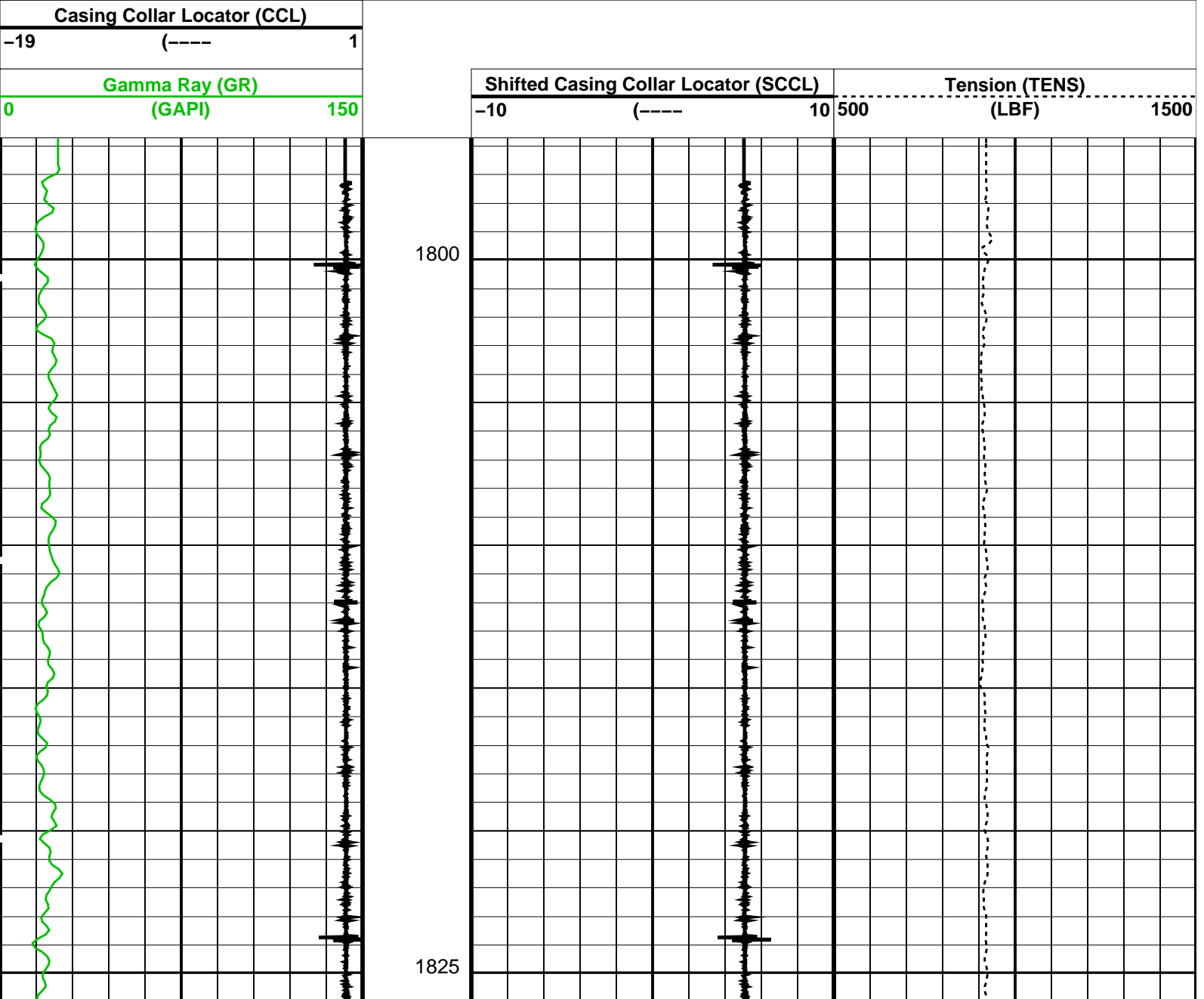
DEFAULT	PERFO_039PUP	FN:37	PRODUCER	08-Dec-2009 12:49	1918.3 M	1795.6 M
---------	--------------	-------	----------	-------------------	----------	----------

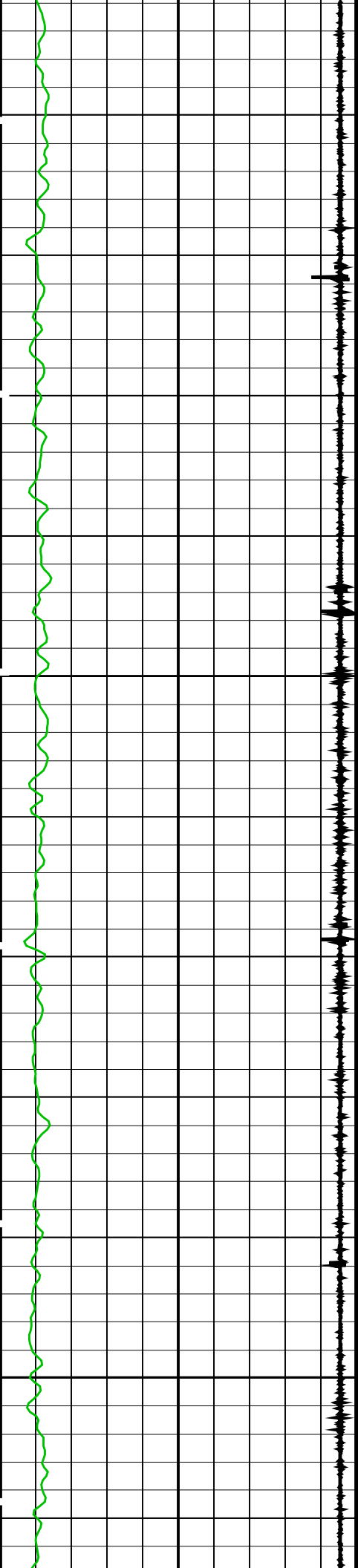
OP System Version: 17C0-154

SHM_GUN	17C0-154	UPCT-A	17C0-154
---------	----------	--------	----------

PIP SUMMARY

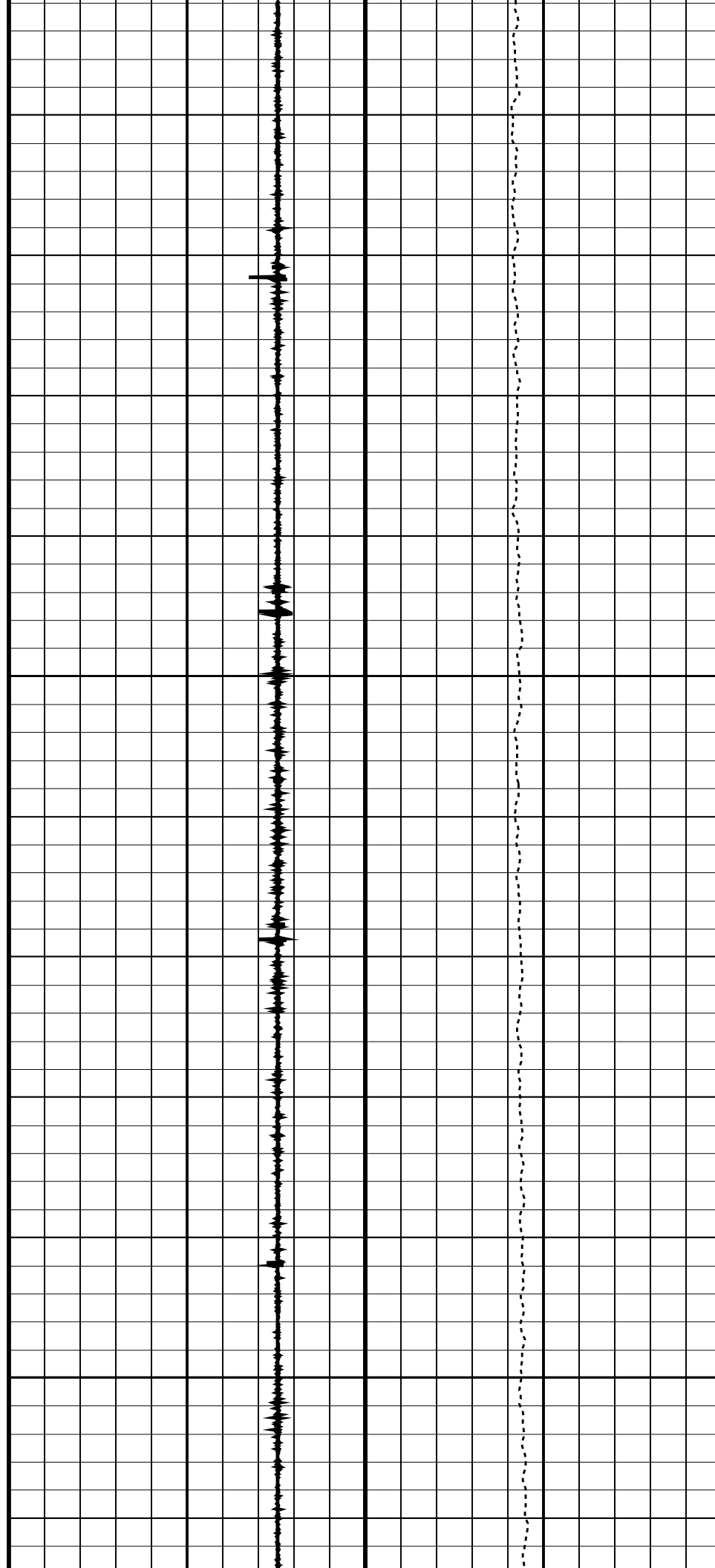
☒ Time Mark Every 60 S

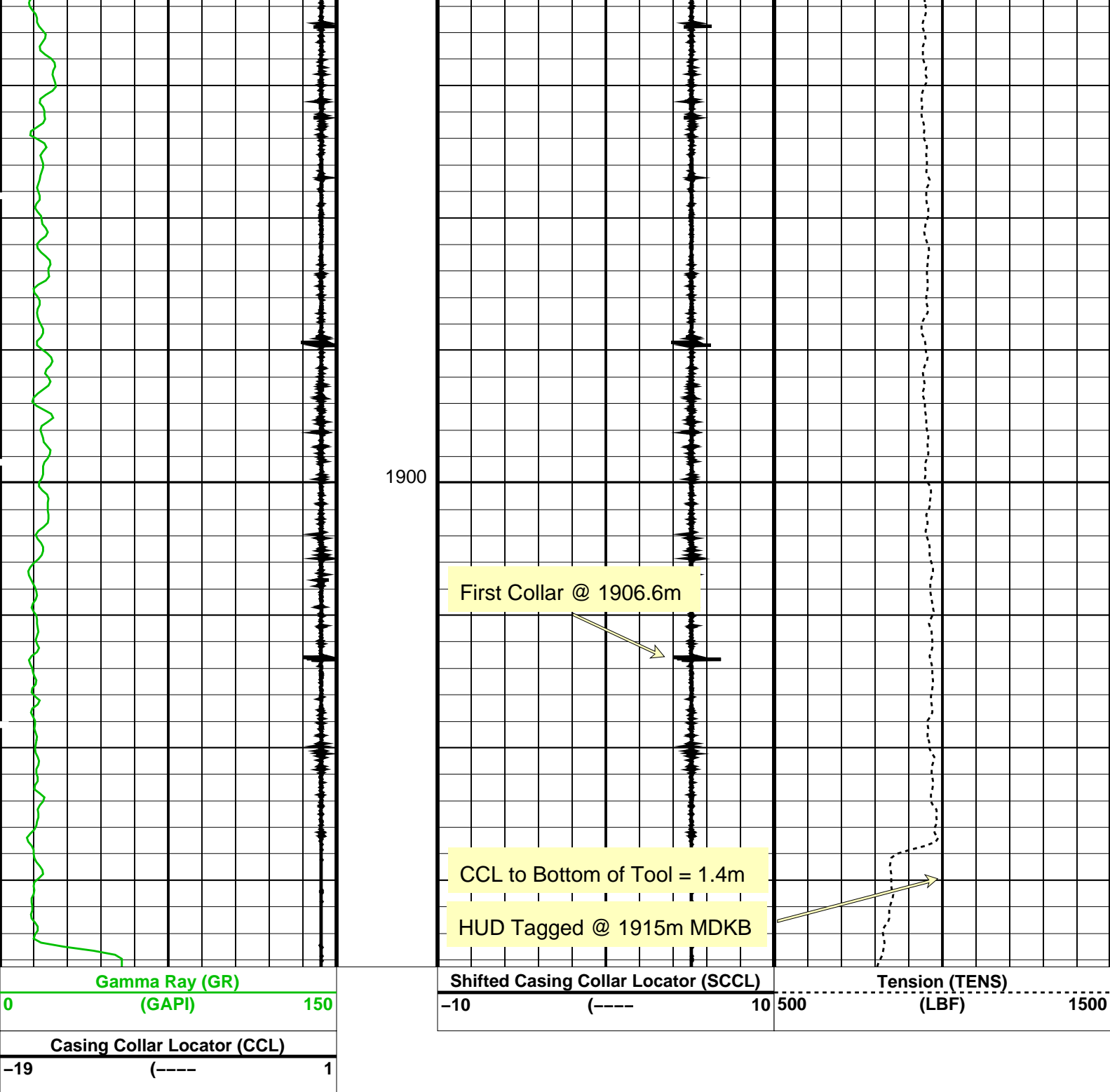




1850

1875





PIP SUMMARY

Time Mark Every 60 S

Parameters

DLIS Name	Description	Value
DO	System and Miscellaneous	
PP	Depth Offset for Playback	1.3 M
	Playback Processing	NORMAL

Format: PERFO Vertical Scale: 1:200 Graphics File Created: 08-Dec-2009 12:49

OP System Version: 17C0-154

SHM_GUN 17C0-154 UPCT-A 17C0-154

Input DLIS Files

Input DLIS Files					
DEFAULT	PERFO_037LUP	FN:35	PRODUCER	08-Dec-2009 12:35	1916.9 M 1795.1 M
Output DLIS Files					
DEFAULT	PERFO_039PUP	FN:37	PRODUCER	08-Dec-2009 12:49	

Company:	Esso Australia Pty Ltd	Schlumberger
Well:	MKA A22	
Field:	Mackerel	
Rig:	Rig 22/Prod 2	
Country:	Australia	
	UPCT	
	Correlation	
	08-Dec-2009	