

# True Vertical Depth Log

## Longtom-4\_RT\_500TVD Log

Format: V825 RT Log 500TVD

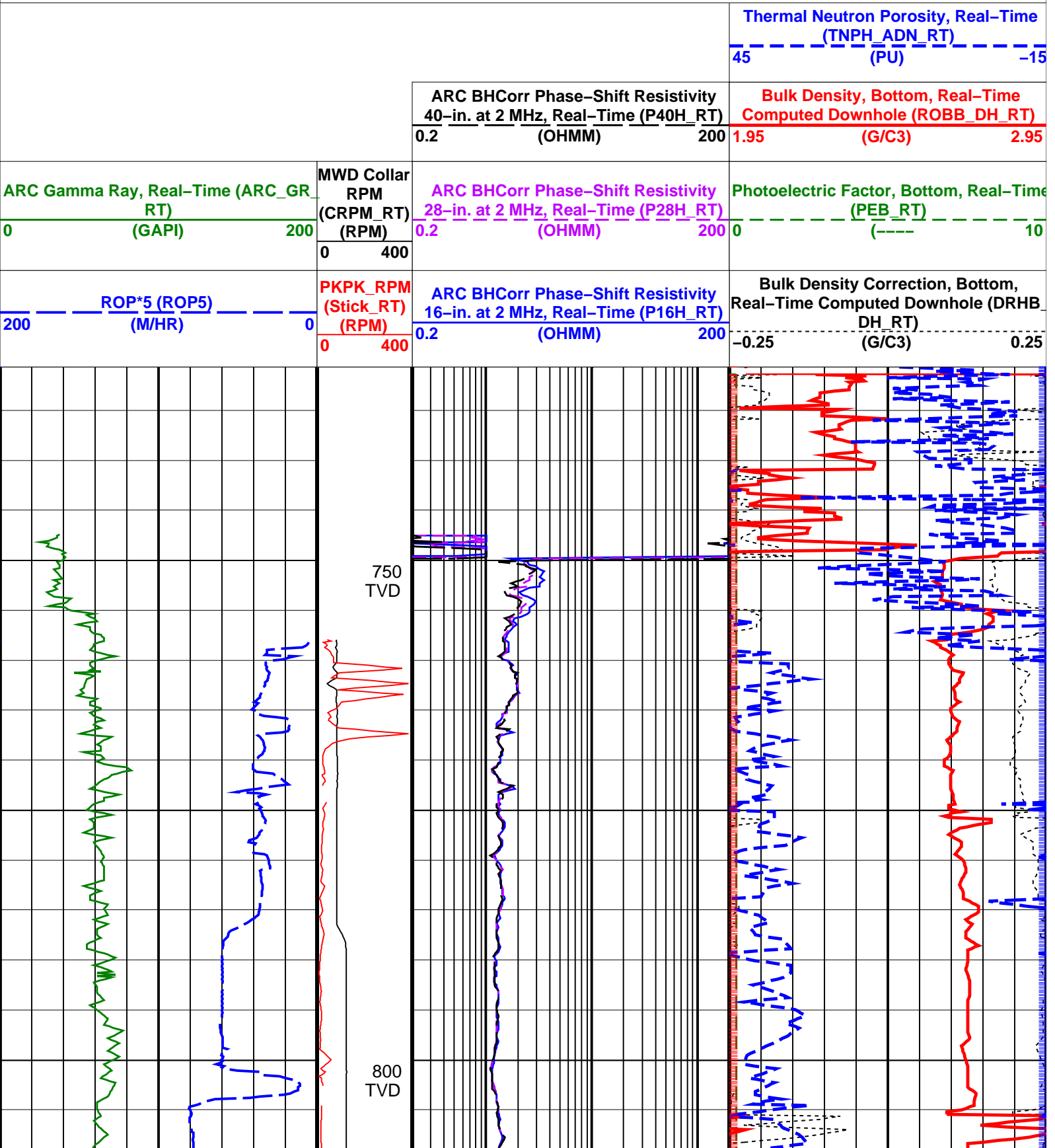
Vertical Scale: 1:500

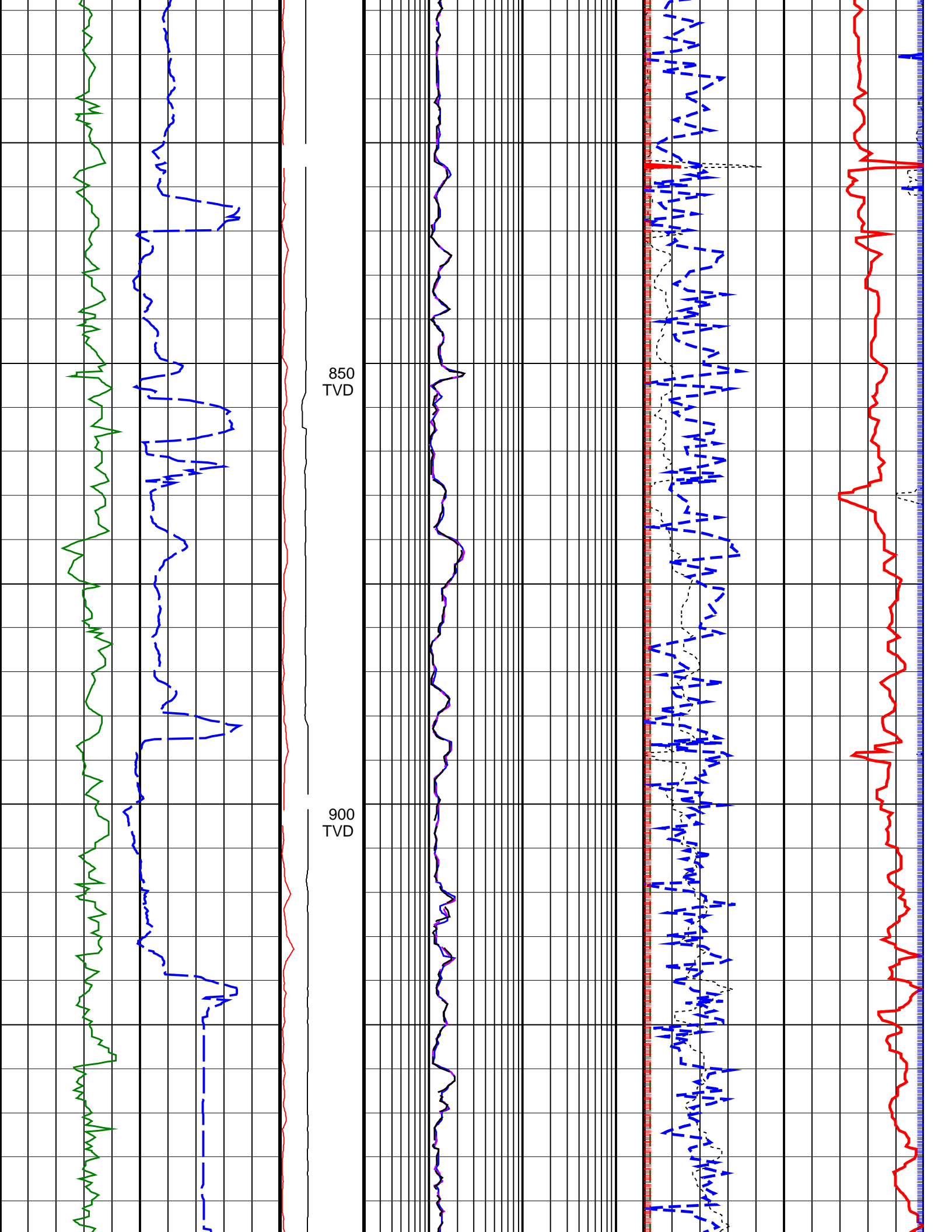
Graphics File Created: 02-Jul-2008 22:16

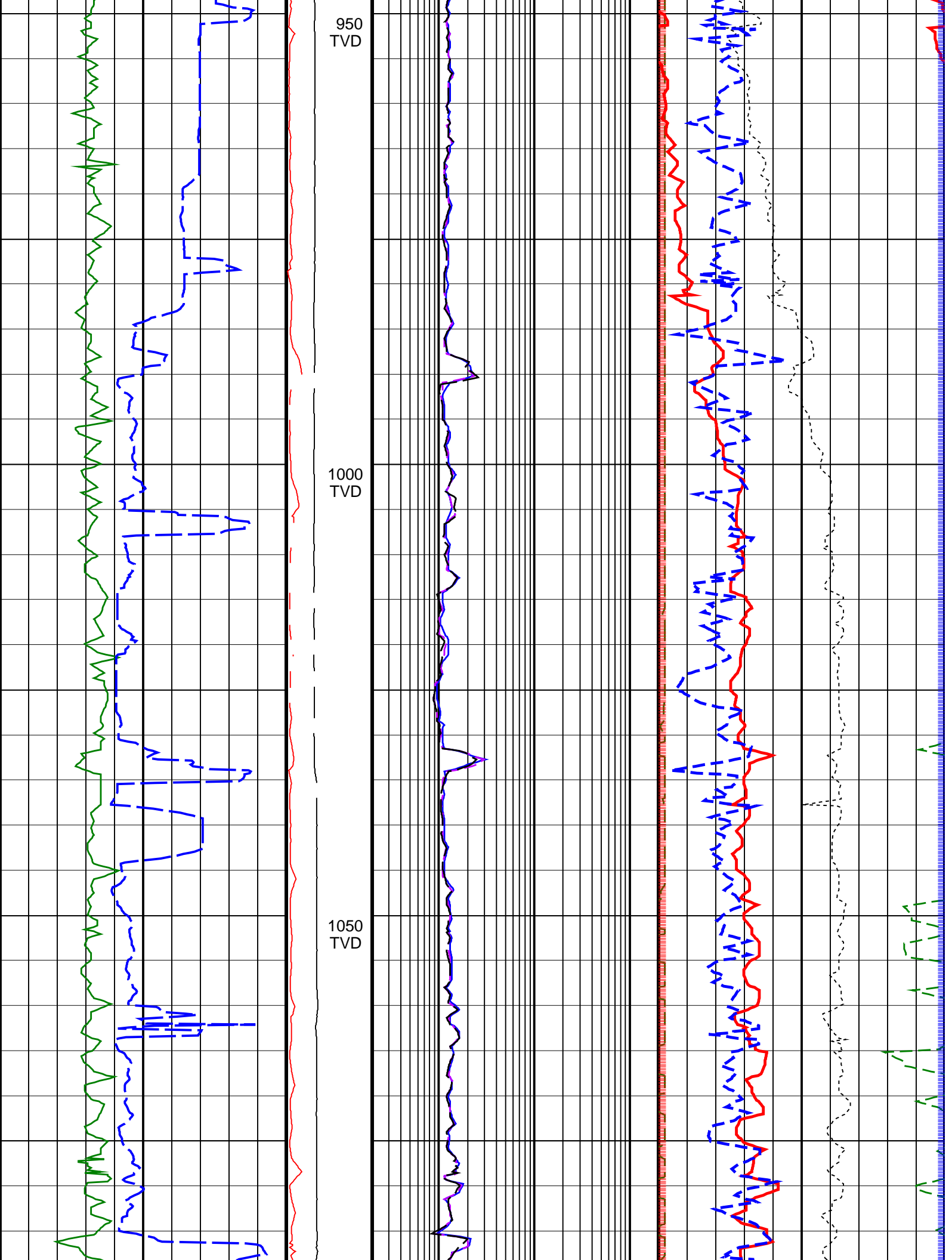
### PIP SUMMARY

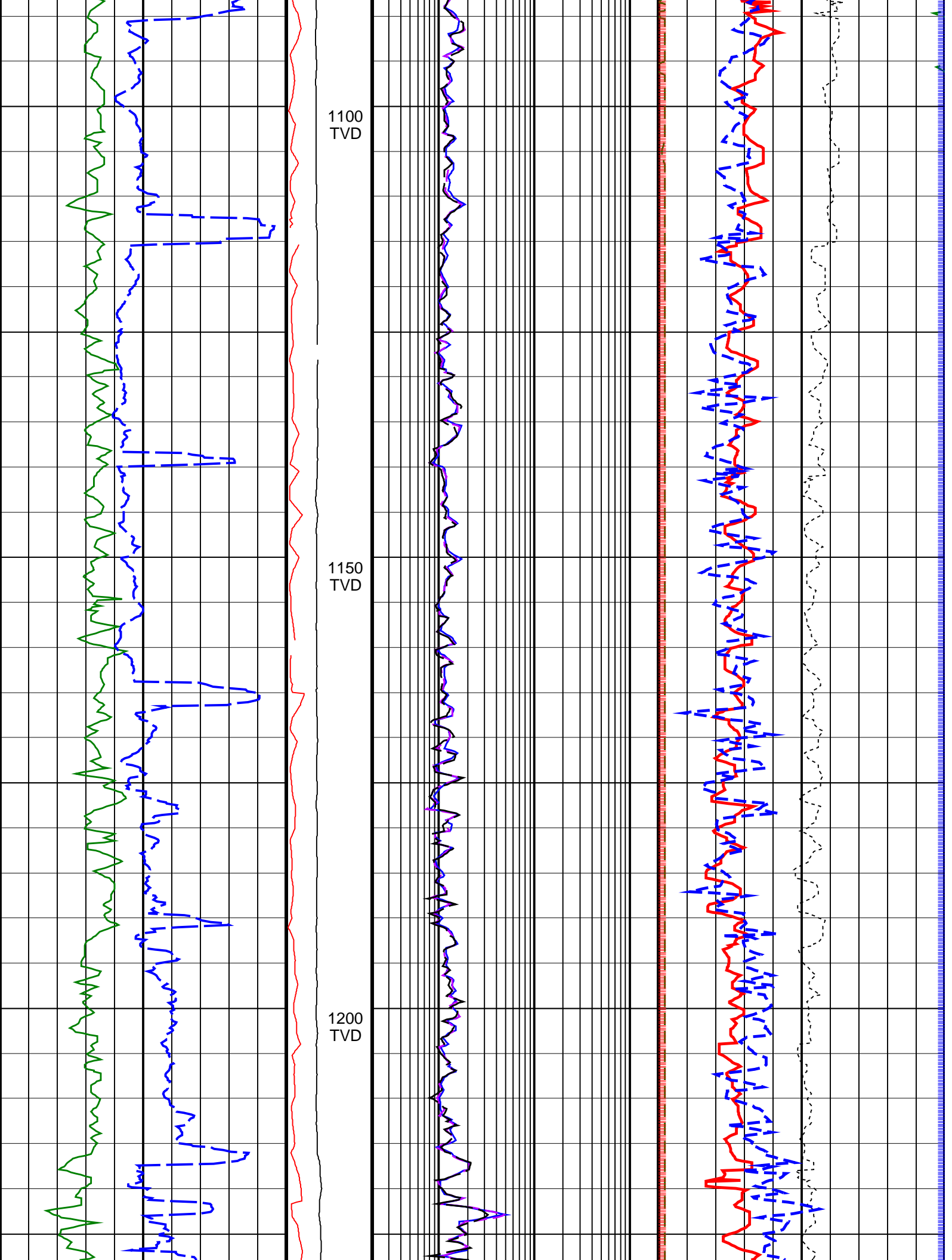
Density Samples  $\vdash$

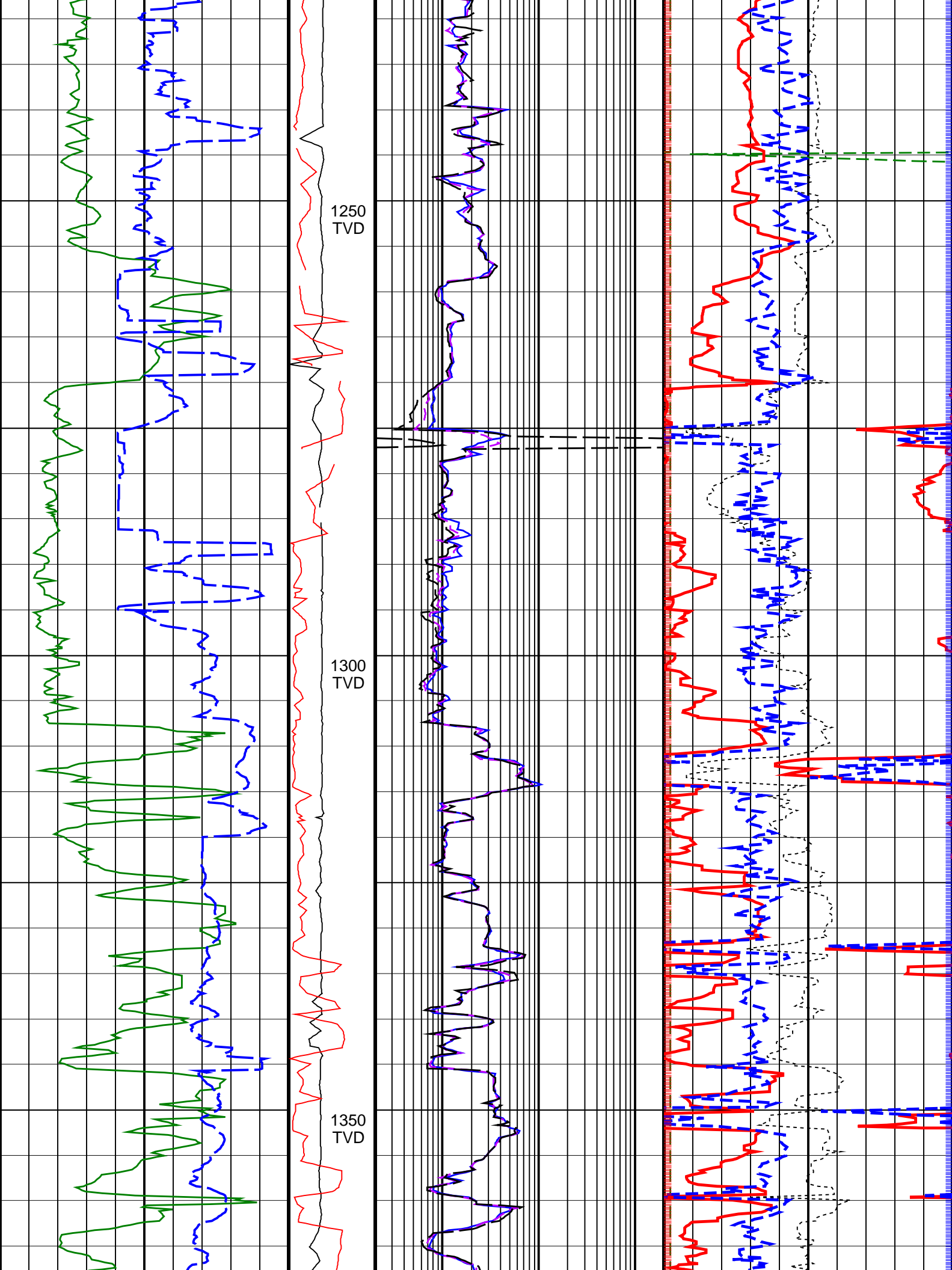
Neutron Samples  $\dashv$

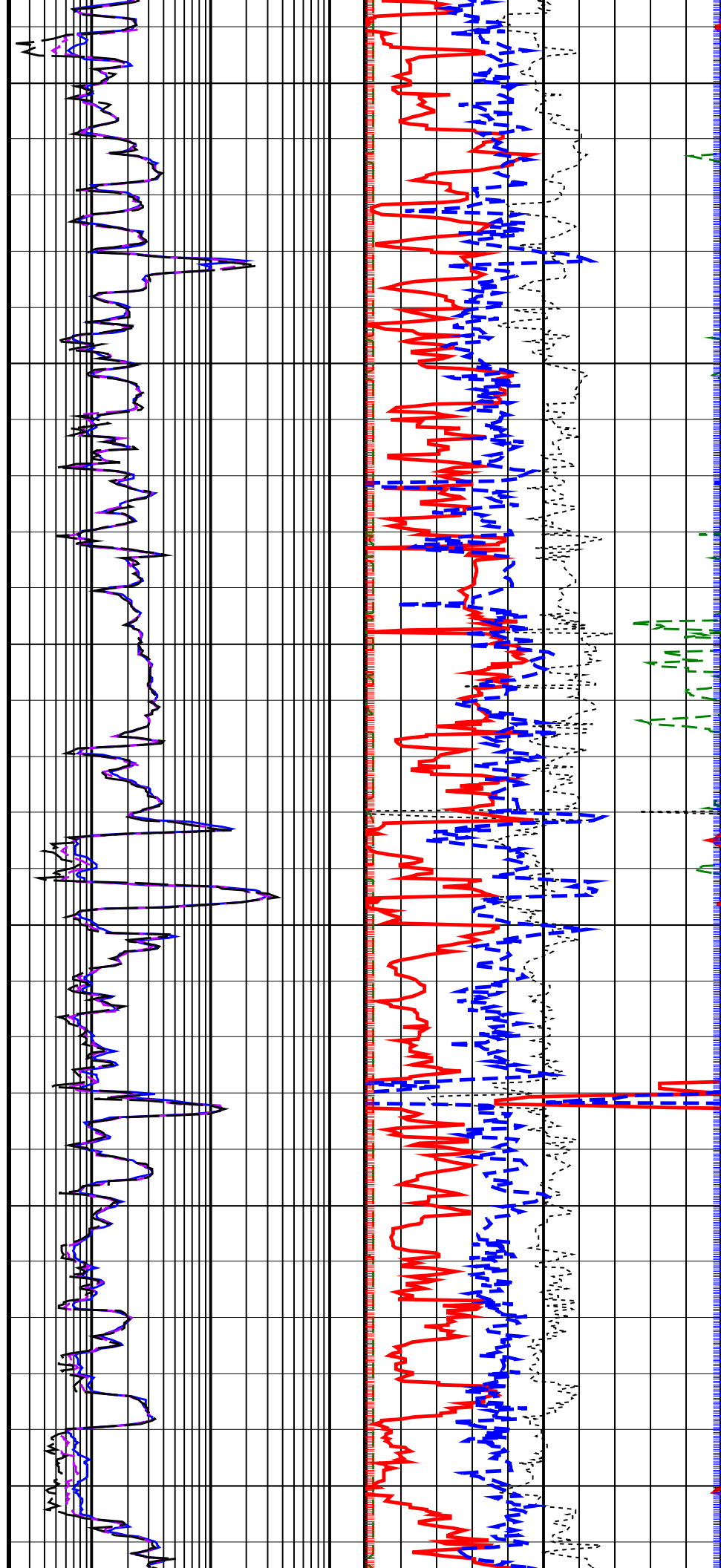
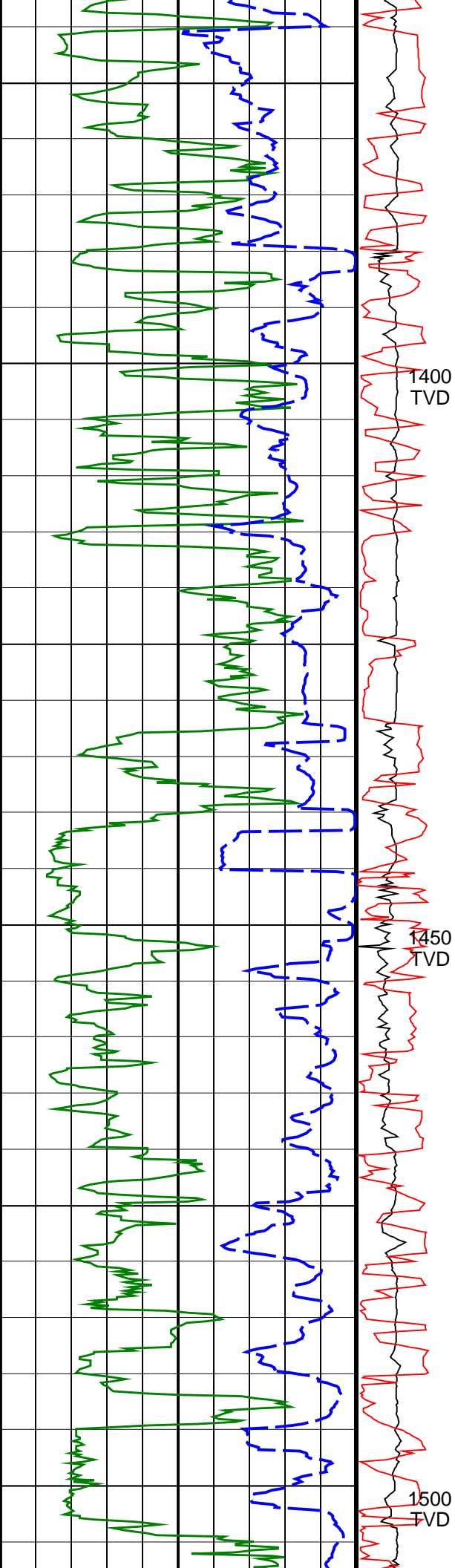


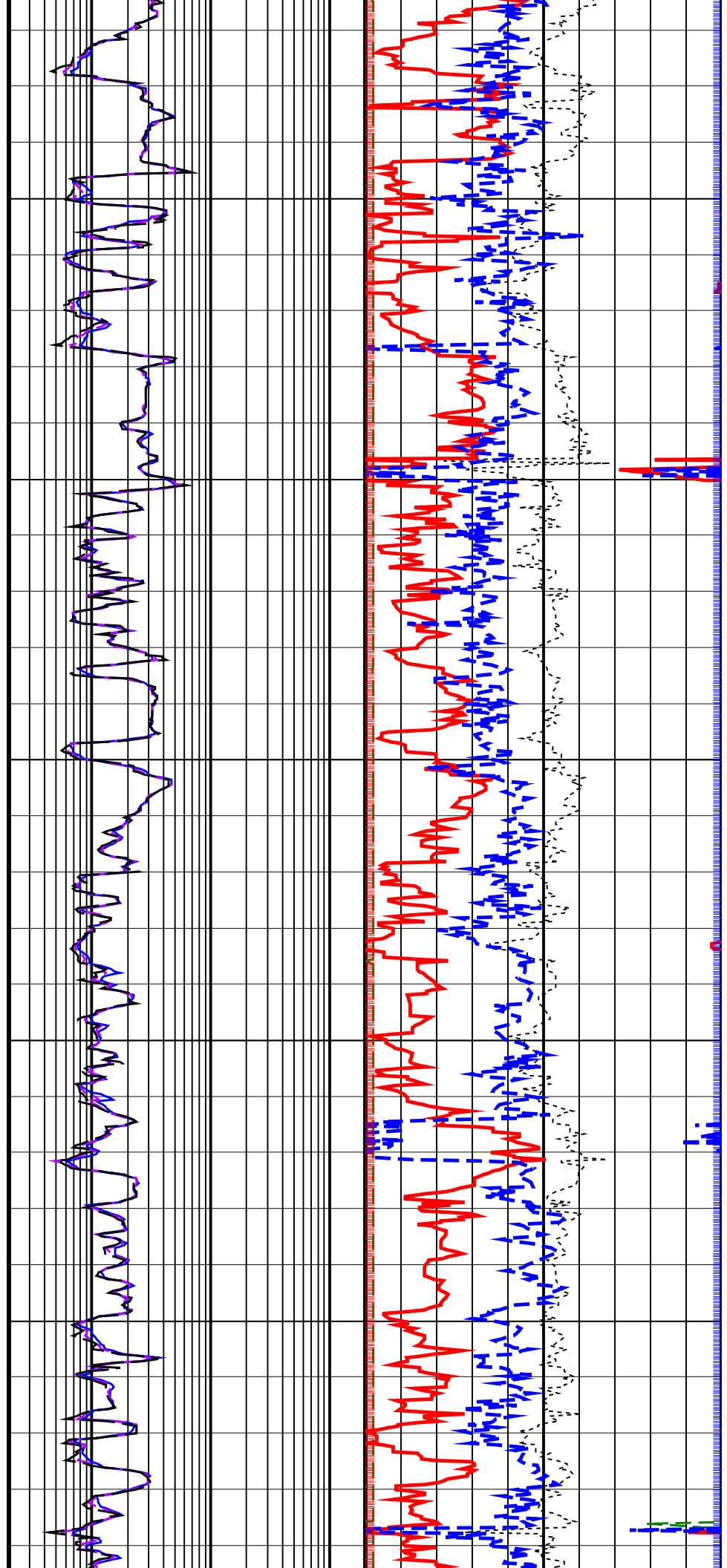
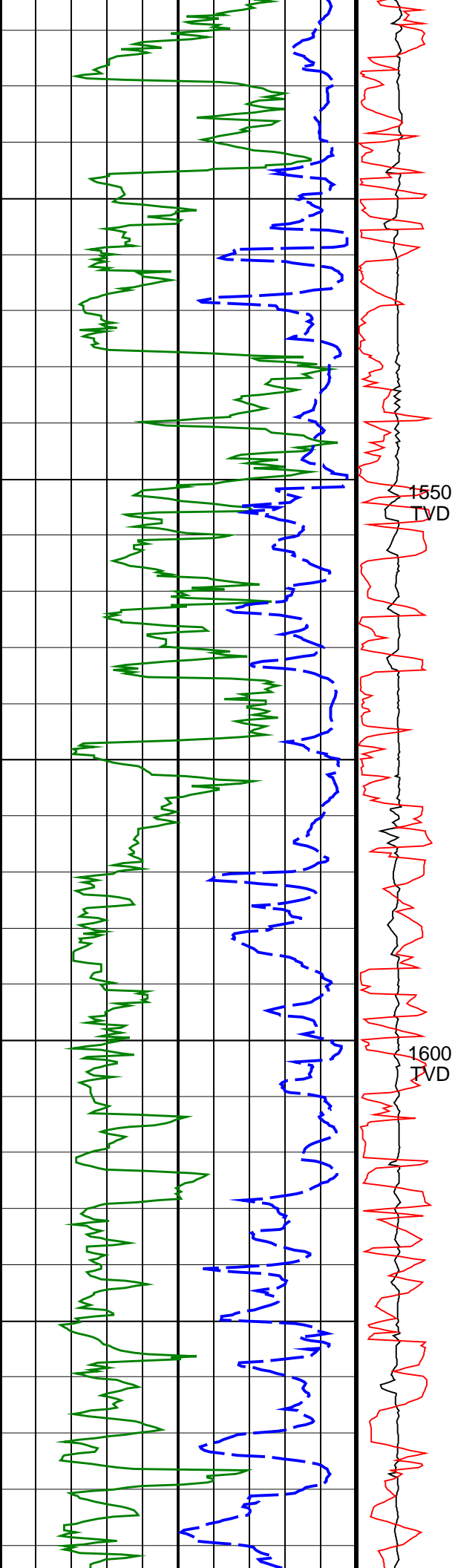


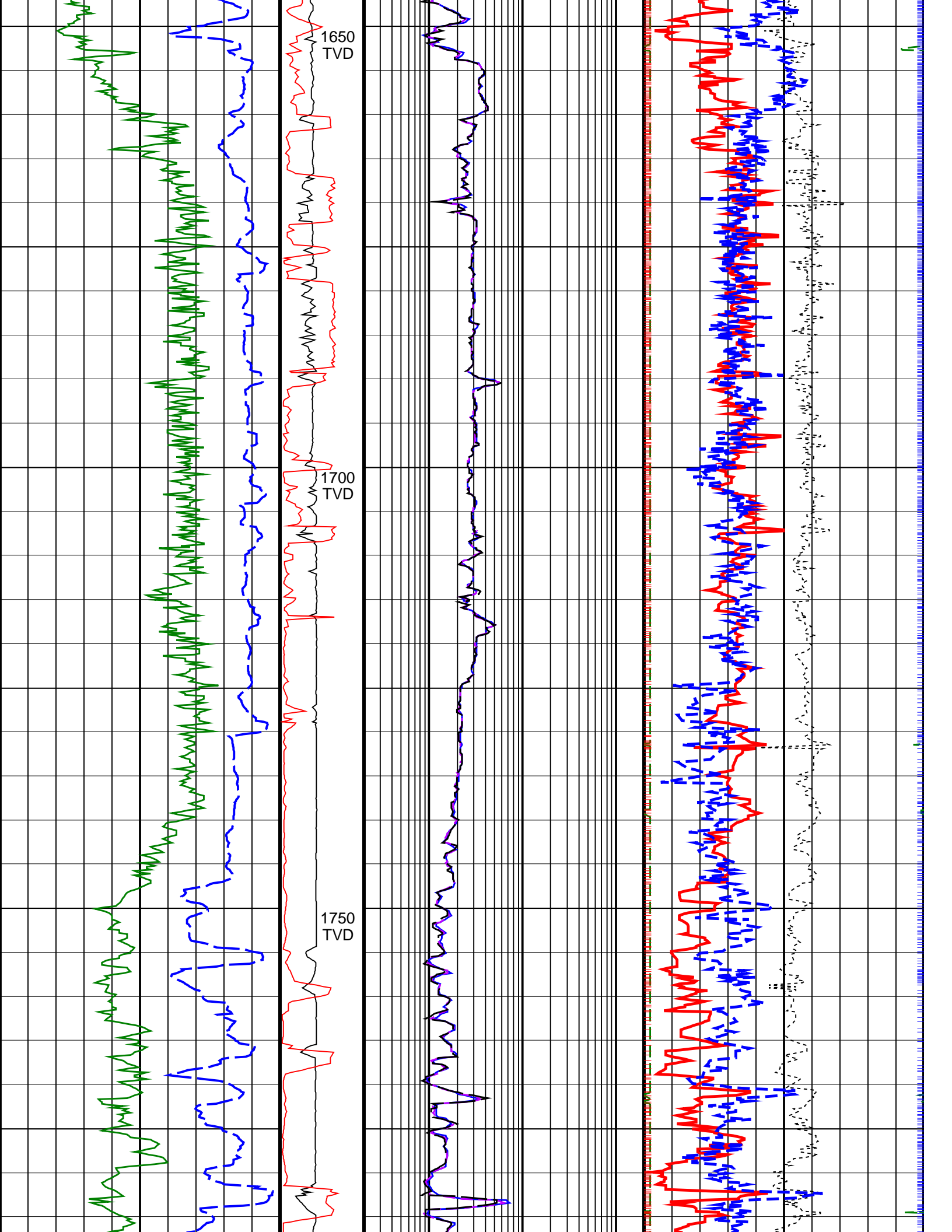




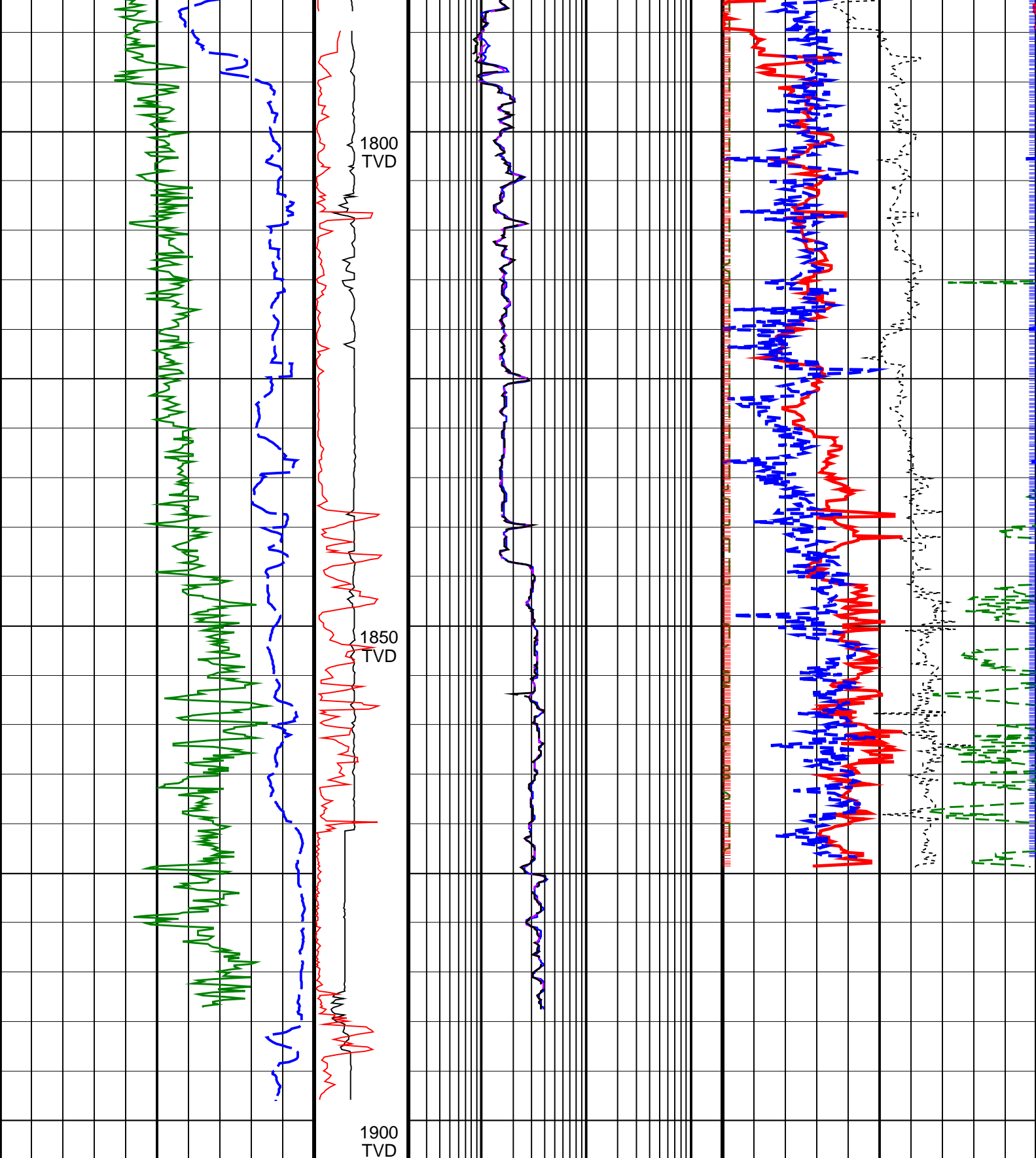












<div>ROP*5 (ROP5)</div> <div>(M/HR)</div> <div>2000</div> <div>0</div>	<div>PKPK_RPM</div> <div>(Stick_RT)</div> <div>(RPM)</div> <div>0</div> <div>400</div>	<div>ARC BHCorr Phase-Shift Resistivity</div> <div>16-in. at 2 MHz, Real-Time (P16H_RT)</div> <div>(OHMM)</div> <div>0.2</div> <div>200</div>	<div>Bulk Density Correction, Bottom,</div> <div>Real-Time Computed Downhole (DRHB_</div> <div>DH_RT)</div> <div>(G/C3)</div> <div>-0.25</div> <div>0.25</div>
<div>ARC Gamma Ray, Real-Time (ARC_GR_</div> <div>RT)</div> <div>(GAPI)</div> <div>0</div> <div>200</div>	<div>MWD Collar</div> <div>RPM</div> <div>(CRPM_RT)</div> <div>(RPM)</div> <div>0</div> <div>400</div>	<div>ARC BHCorr Phase-Shift Resistivity</div> <div>28-in. at 2 MHz, Real-Time (P28H_RT)</div> <div>(OHMM)</div> <div>0.2</div> <div>200</div>	<div>Photoelectric Factor, Bottom, Real-Time</div> <div>(PEB_RT)</div> <div>(----</div> <div>0</div> <div>10</div>

ARC BHCorr Phase-Shift Resistivity

Bulk Density, Bottom, Real-Time

40-in. at 2 MHz, Real-Time (P40H_RT)		Computed Downhole (ROBB_DH_RT)	
0.2	(OHMM)	200	1.95 (G/C3) 2.95
		Thermal Neutron Porosity, Real-Time (TNPH_ADN_RT)	
		45 (PU) -15	
PIP SUMMARY			
Density Samples		Neutron Samples	
IDEAL Version: ID13_0C_08			
IDF			
True Vertical Depth Log			