



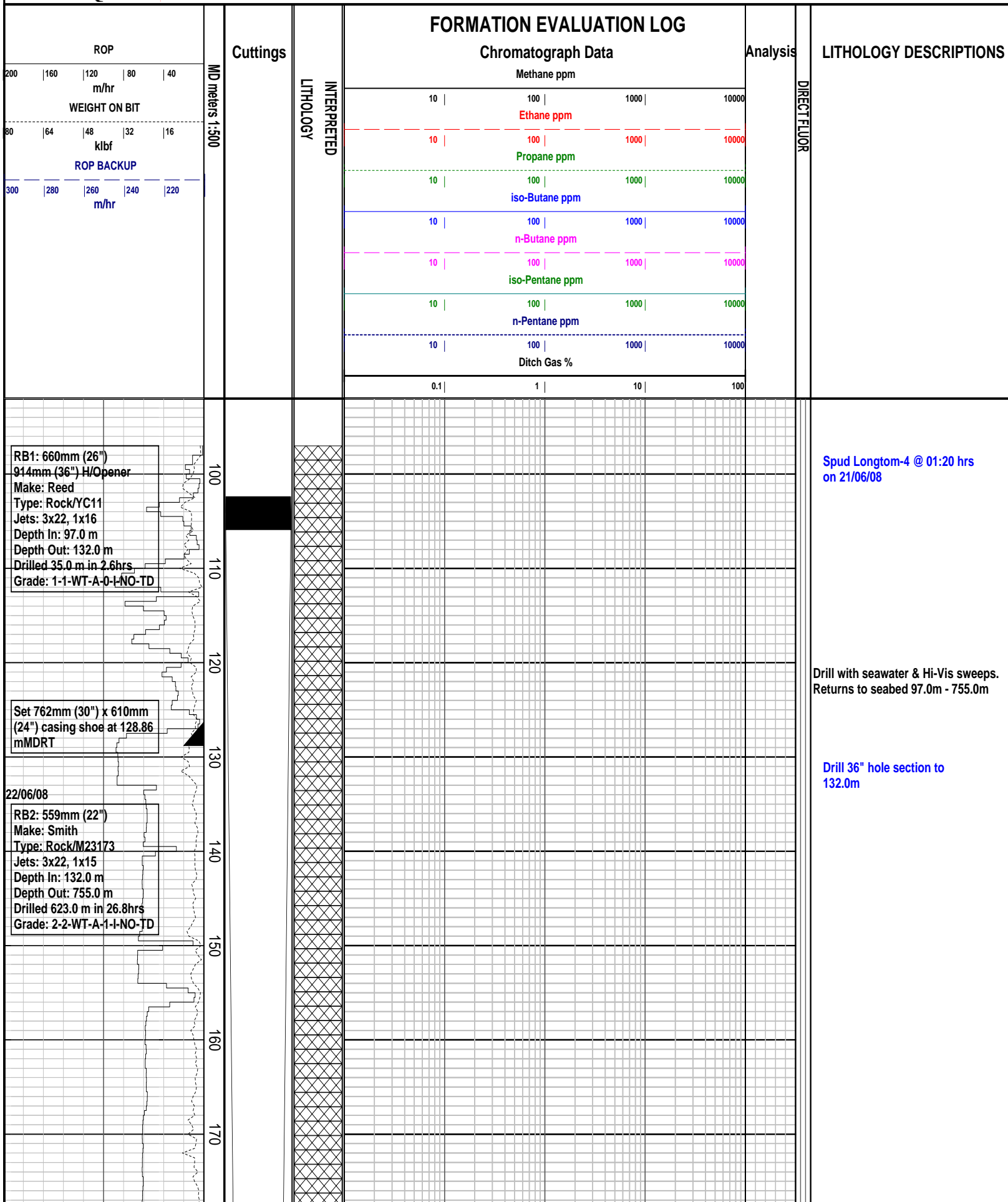
INTEQ

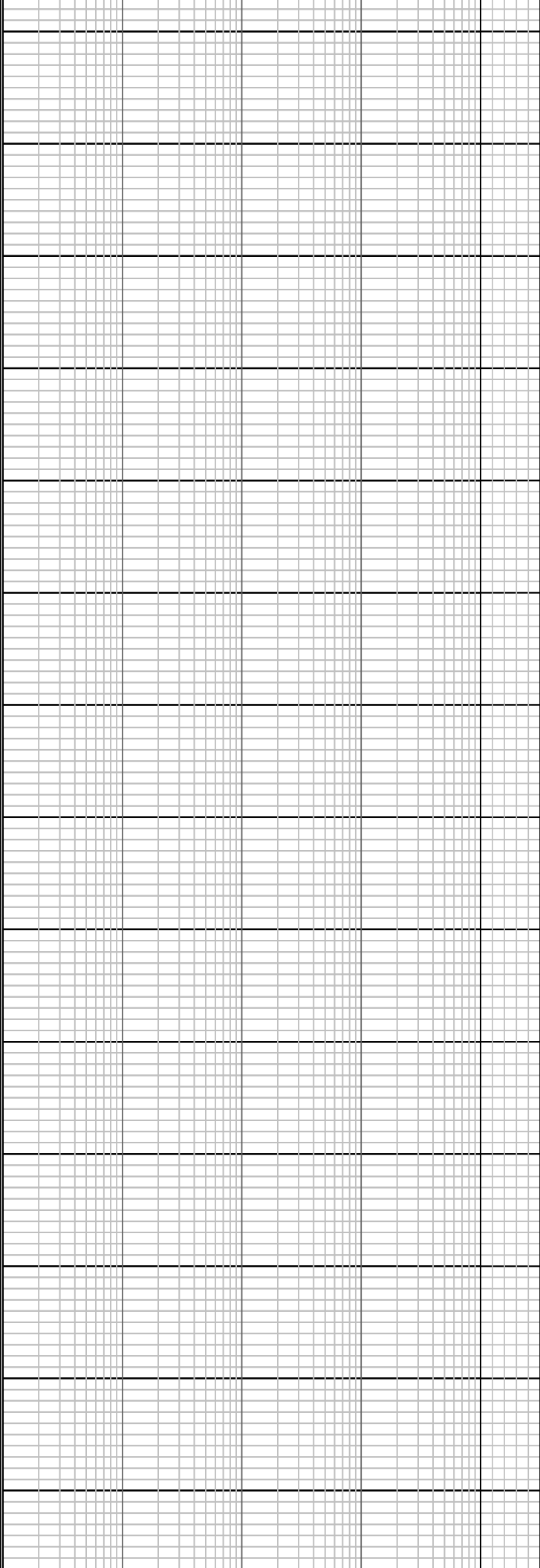
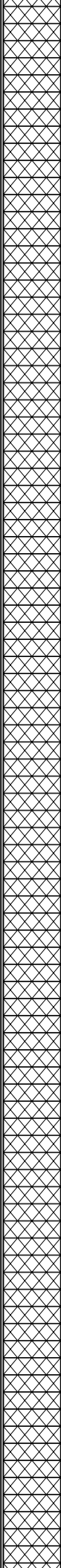
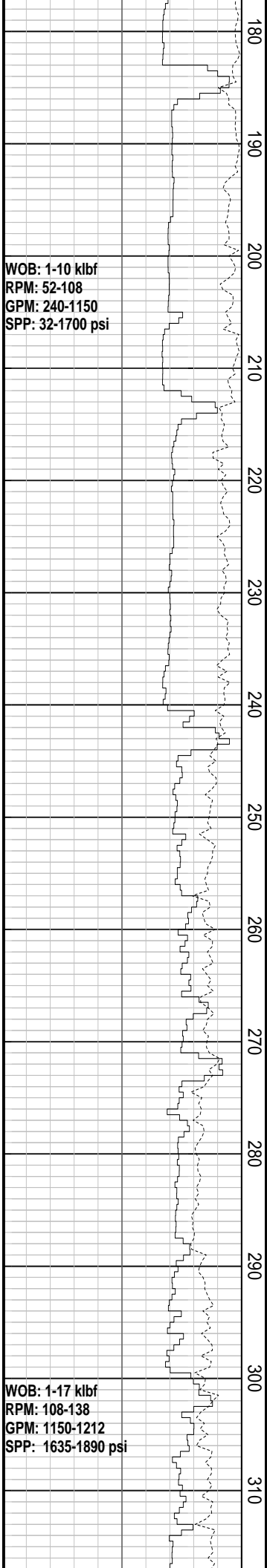
Company : Nexus Energy

Well : Longtom-4

Interval : 92.00 - 1508.46 meters

Created : 01/Jul/2008 5:27:10 AM

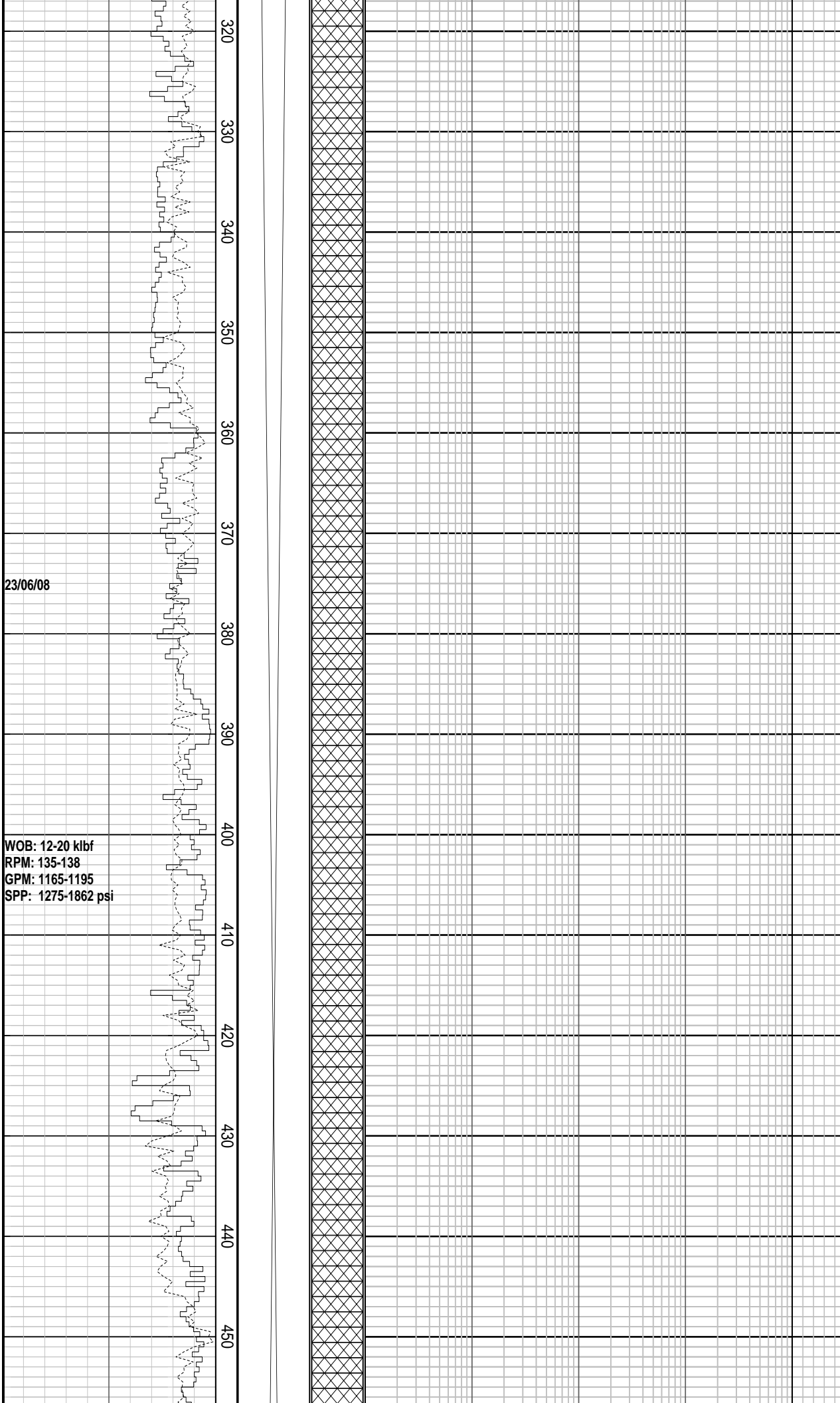




MD: 204.75 m Azi: 355.69°
TVD: 204.7 m Incl: 0.52°

Drill with seawater & Hi-Vis sweeps.
Returns to seabed 97.0m - 755.0m

MD: 321.74 m Azi: 145.66°



TVD: 321.7 m Incl: 2.44°

Drill with seawater & Hi-Vis sweeps.
Returns to seabed 97.0m - 755.0m

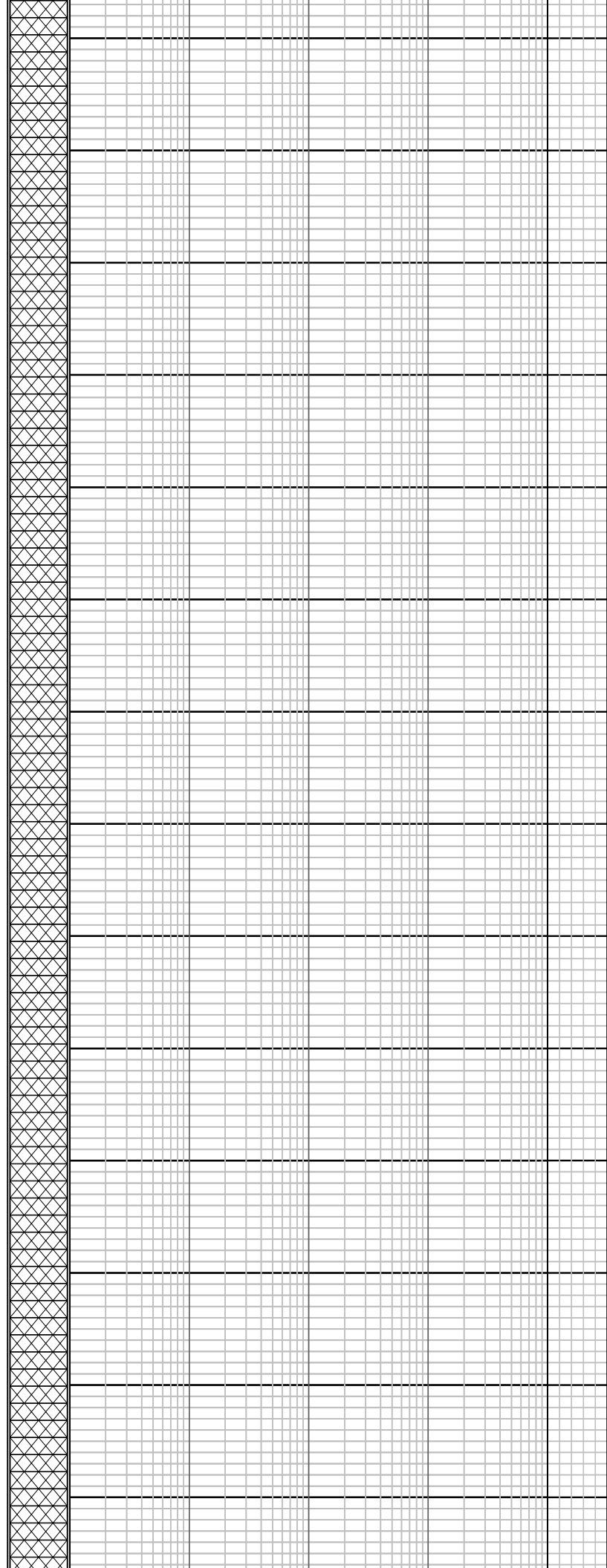
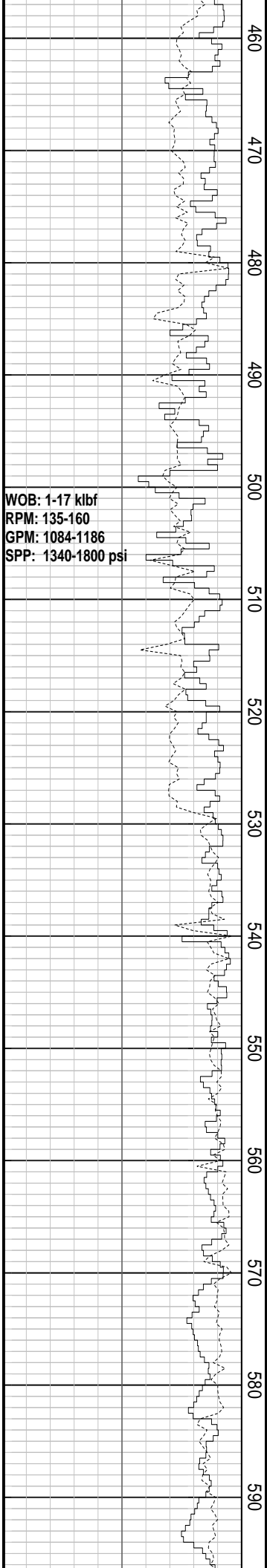
MD: 324.05 m Azi: 189.14°
TVD: 324.6 m Incl: 0.78°

MD: 382.91 m Azi: 326.57°
TVD: 382.9 m Incl: 0.23°

MD: 412.77 m Azi: 250.06°
TVD: 412.7 m Incl: 0.34°

Drill with seawater & Hi-Vis sweeps.
Returns to seabed 97.0m - 755.0m

MD: 442.90 m Azi: 118.87°
TVD: 442.9 m Incl: 0.19°



Drill with seawater & Hi-Vis sweeps.
Returns to seabed 97.0m - 755.0m

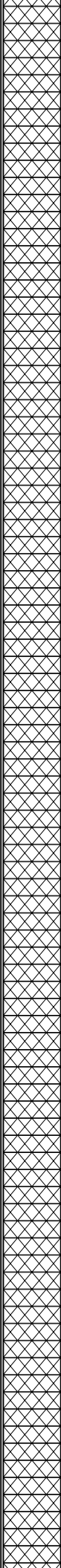
MD: 531.83 m	Azi: 328.15°
TVD: 531.8 m	Incl: 0.85°

MD: 563.30 m	Azi: 289.41°
TVD: 563.3 m	Incl: 0.97°

WOB: 3-34 klbf
RPM: 129-188
GPM: 1165-1179
SPP: 1253-1895 psi

WOB: 1-26 klbf
RPM: 103-152
GPM: 1161-1179
SPP: 1268-1928 psi

600
610
620
630
640
650
660
670
680
690
700
710
720
730



Drill with seawater & Hi-Vis sweeps.
Returns to seabed 97.0m - 755.0m

MD: 651.66 m	Azi: 355.43°
TVD: 651.6 m	Incl: 0.44°

Drill with seawater & Hi-Vis sweeps.
Returns to seabed 97.0m - 755.0m

24/06/08

Set 406mm (16") casing at
750.03 mMDRT

NB3: 375mm (14-3/4")

Make: Reed

Type: Rock/T11

Jets: 3x20, 1x16

Depth In: 755.0 m

Depth Out: 758.0 m

Drilled 3.0 m in 0.2hrs

Grade: XXXXXXXX

NB4: 343mm (13-1/2")

Make: Reed

Type: PDC/RSH616M-A3

Jets: 3x18, 3x16

Depth In: 758.0 m

Depth Out: XXX m

Drilled XXX m in XXXhrs

Grade: XXXXXXXX

WOB: 1-25 klbf
RPM: 60-160
GPM: 737-1172
SPP: 1302-2459 psi

740
750
760
770
780
790
800
810
820
830
840
850
860
870

MD: 741.14 m Azi: 334.49°
TVD: 741.1 m Incl: 0.59°

MD: 750.39 m Azi: 327.45°
TVD: 750.4 m Incl: 0.71°

Drill 22" hole section to
755.0m

MD: 783.28 m Azi: 304.12°
TVD: 783.3 m Incl: 0.52°

CLCLT: m gy, sft - mod hd, amor -
sbbiky, disp, tr vf lse qtz gns

MD: 812.94 m Azi: 203.29°
TVD: 812.9 m Incl: 2.32°

CLCLT: m - dk gy, sft - frm, occ hd,
amor - sbbiky, disp, tr vf lse qtz grs

MD: 842.62 m Azi: 197.90°
TVD: 842.5 m Incl: 5.16°

CLCLT: m - dk gy, sft - frm, occ hd,
amor - sbbiky, disp, tr vf lse qtz grs

MD: 872.25 m Azi: 192.11°
TVD: 872.0 m Incl: 7.16°

WOB: 0-31 klbf
RPM: 97-129
GPM: 929-1044
SPP: 2063-2666 psi

WOB: 2-35 klbf
RPM: 127-130
GPM: 966-1057
SPP: 2284-2838 psi

CLCLT: m - dk gy, sft - frm, occ hd,
amor - sbblky, disp, tr vf lse qtz gns

MD: 901.94 m	Azi: 183.91°
TVD: 901.4 m	Incl: 8.22°

CLCLT: m - dk gy, sft - frm, occ hd,
amor - sbblky, disp, tr vf lse qtz gns

MD: 931.42 m	Azi: 179.91°
TVD: 930.5 m	Incl: 10.19°

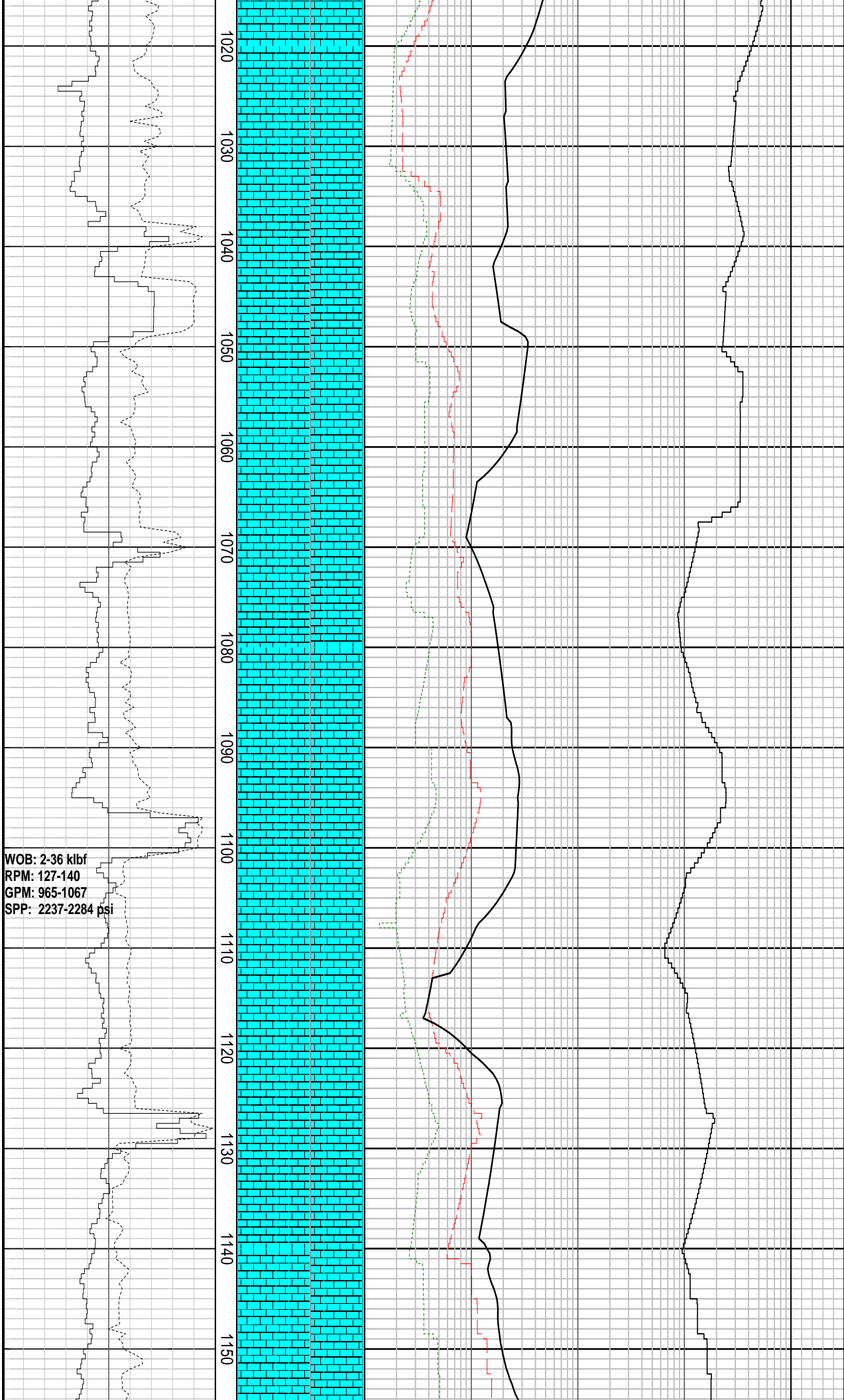
CLCLT: lt - m gy, v sft - sft, amor -
sbblky, disp, tr vf lse qtz gns

MD: 960.94 m	Azi: 179.75°
TVD: 959.4 m	Incl: 13.95°

CLCLT: lt m gy, v sft - sft, amor -
sbblky, disp, tr vf lse qtz gns

MD: 990.68 m	Azi: 178.95°
TVD: 988.0 m	Incl: 17.52°

CLCLT: lt m gy, v sft - sft, amor -
sbblky, disp, tr vf lse qtz gns



MD: 1020.40 m Azi: 177.48°
TVD: 1016.0 m Incl: 20.88°

CLCLT: lt m gy, v sft - sft, amor -
sbbly, disp, tr vf lse qtz grs

MD: 1050.8 m Azi: 176.64°
TVD: 1043.4 m Incl: 24.28°

CLCLT: lt m gy, v sft - sft, amor -
sbbly, disp, tr vf lse qtz grs

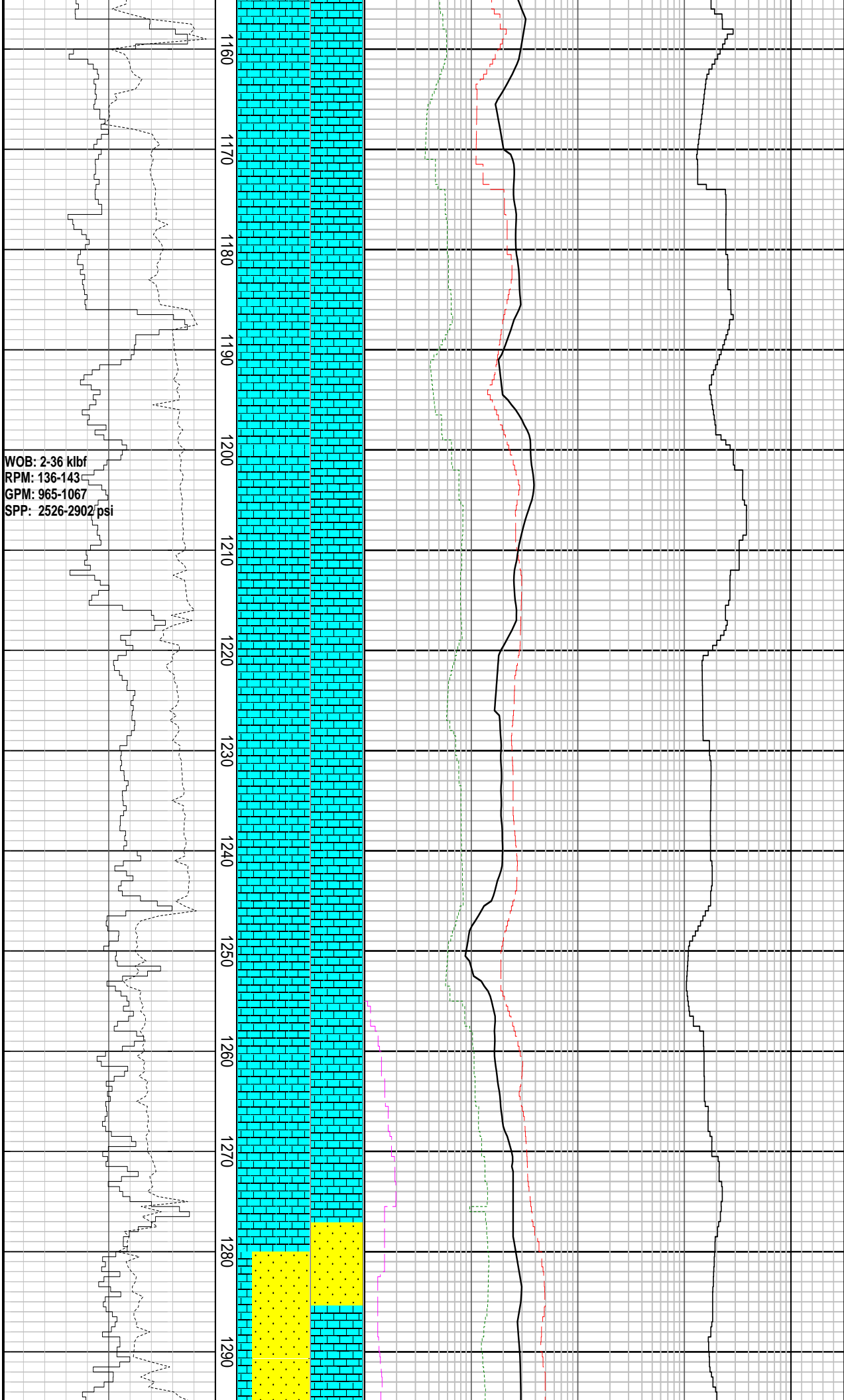
MD: 1078.64 m Azi: 178.42°
TVD: 1069.30 m Incl: 25.70°

CLCLT: lt m gy, occ wh, v sft - sft,
amor - sbbly, disp, tr glauc, tr carb
spks, tr vf lse qtz grs

MD: 1108.28 m Azi: 180.79°
TVD: 1095.9 m Incl: 26.85°

CLCLT:lt m gy, occ wh, v sft - sft,
amor - sbbly, disp, tr glauc, tr carb
spks, tr vf lse qtz grs

MD: 1137.39 m Azi: 182.43°
TVD: 1121.8 m Incl: 27.64°



MD: 1166.97 m Azi: 183.83°
TVD: 1147.9 m Incl: 28.48°

CLCLT: lt m gy, occ wh, v sft - sft,
amor - sbblky, disp, tr glauc, tr carb
spks

MD: 1196.40 m Azi: 184.58°
TVD: 1173.60 m Incl: 29.46°

CLCLT: lt m gy, occ wh, v sft - sft,
amor - sbblky, disp, tr glauc, tr carb
spks, tr vf lse qtz grs

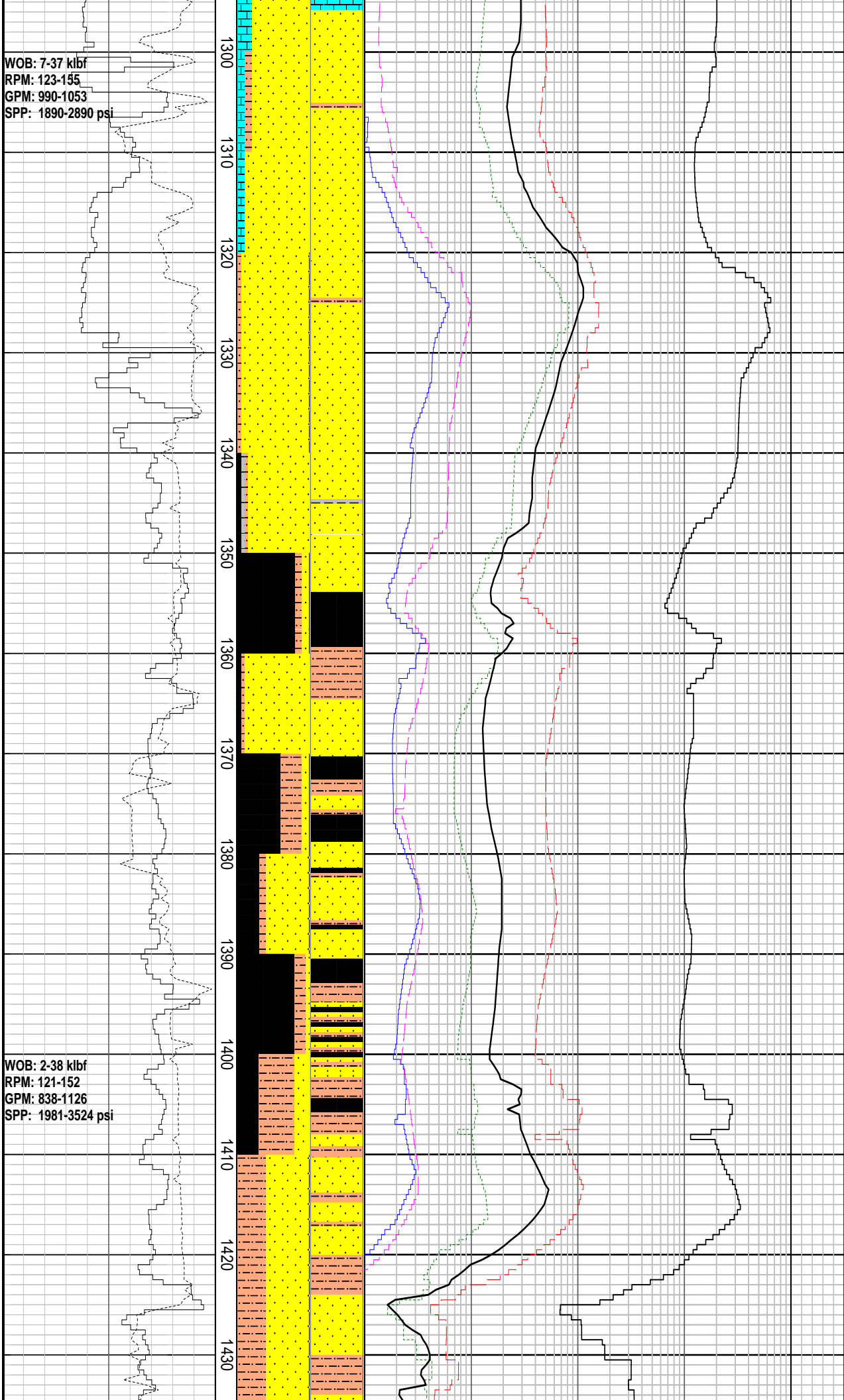
MD: 1225.95m Azi: 185.46°
TVD: 1199.30 m Incl: 30.16°

CLCLT: lt m gy, occ wh, v sft - sft,
amor - sbblky, disp, tr glauc, tr carb
spks, tr vf lse qtz grs

MD: 1285.37m Azi: 186.70°
TVD: 1250.80 m Incl: 30.03°

WOB: 7-37 klbf
RPM: 123-155
GPM: 990-1053
SPP: 1890-2890 psi

WOB: 2-38 klbf
RPM: 121-152
GPM: 838-1126
SPP: 1981-3524 psi



SST:lse, wh - v lt gy, tr lt brnsh gy, f -
v crs, pred f - m, crs - v crs, ang -
rndd, pred ang - sbrnrd, prly srt, tr
pyr, tr mic

MD: 1315.16m Azi: 187.70°
TVD: 1276.4 m Incl: 31.09°

SLTST: dk brn gy, frm - mod hd, argl,
slily carb, tr pyr

MD: 1344.99m Azi: 187.53°
TVD: 1302.70 m Incl: 31.21°

COAL: blk, mod dull, hd, blk

SST:lse f - v crs, mngr grs, dom m, as
abv, tr pyr

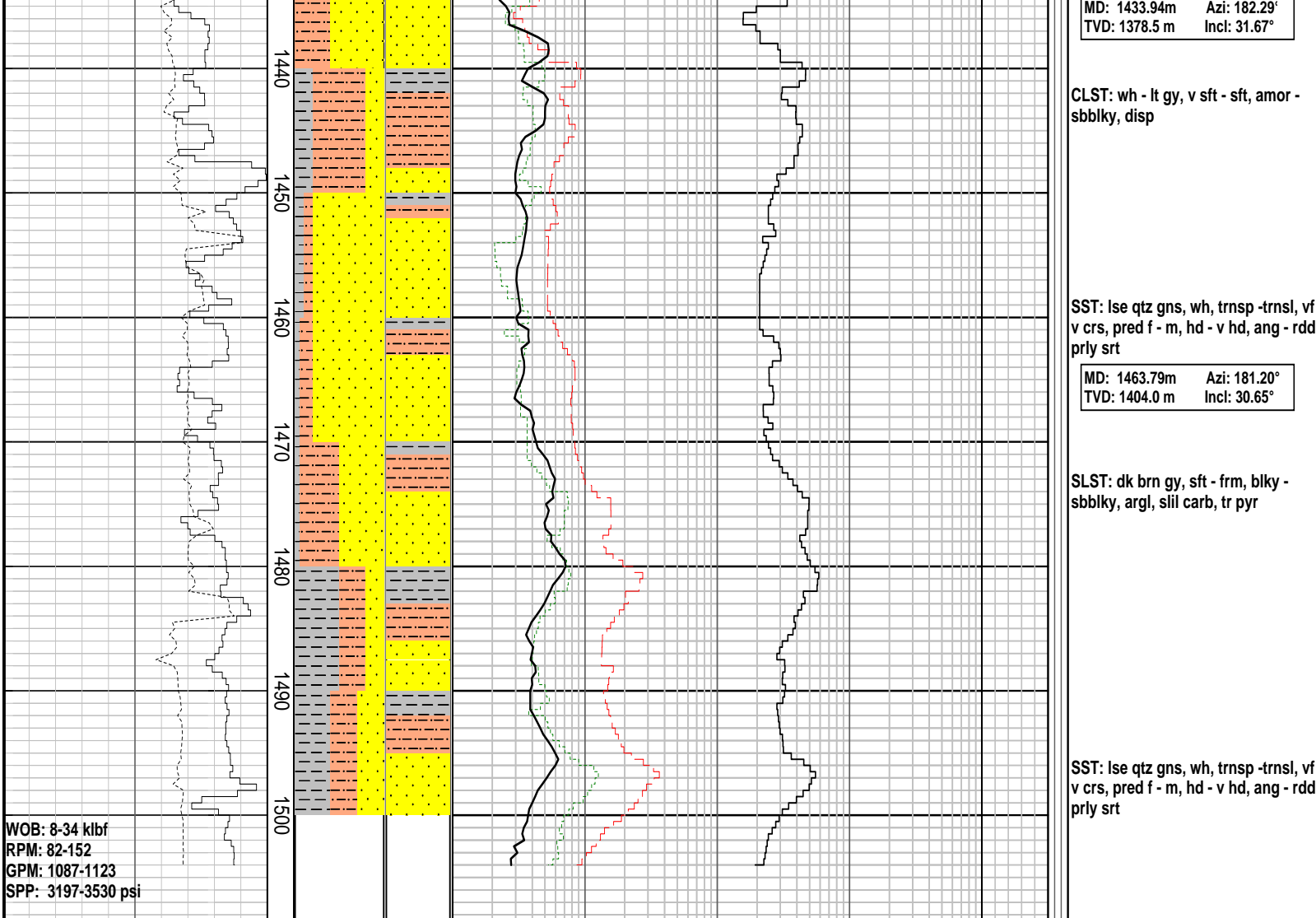
MD: 1374.68m Azi: 184.92°
TVD: 1327.4 m Incl: 30.42°

SST:lse f - v crs, mngr grs, dom m, as
abv, tr pyr

MD: 1404.59m Azi: 183.00°
TVD: 1353.3 m Incl: 30.04°

COAL: blk, frm, grd - carb Stst

SLST: dk brn gy, sft - frm, blk -
sblly, argl, slil carb, tr pyr



FORMATION EVALUATION LOG										Analysis		LITHOLOGY DESCRIPTIONS		
Chromatograph Data														
CUTTINGS		INTERPRETED LITHOLOGY	Methane ppm								DIRECT FLUOR			
			10 100 1000 10000											
			Ethane ppm											
			10 100 1000 10000											
			Propane ppm											
			10 100 1000 10000											
			iso-Butane ppm											
			10 100 1000 10000											
			n-Butane ppm											
			10 100 1000 10000											
iso-Pentane ppm														
10 100 1000 10000														
n-Pentane ppm														
10 100 1000 10000														
Ditch Gas %														
0.1 1 10 100														
ROP		MD meters 1:500												
CUTTINGS		INTERPRETED LITHOLOGY									Analysis		LITHOLOGY DESCRIPTIONS	