



Company : Santos

Well : Henry-2

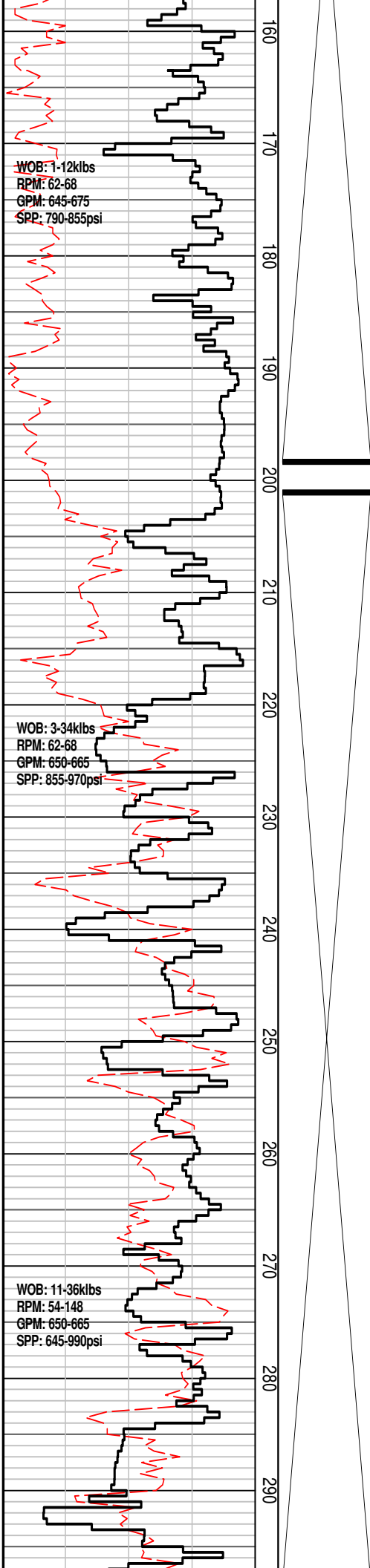
Interval : 59.00 - 662.45 meters

Created : 28/Aug/2008 1:51:18 AM

INTEQ

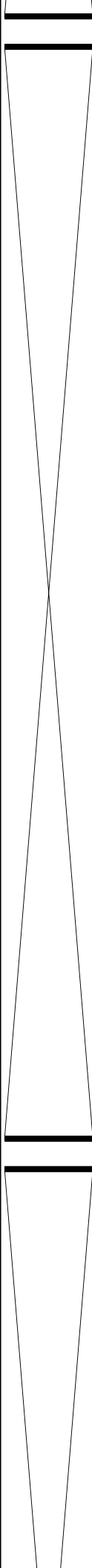
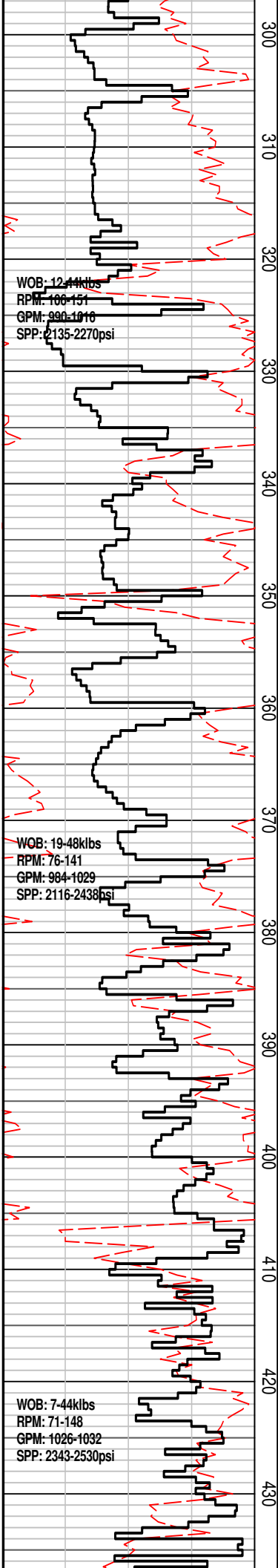
### HENRY-2 FORMATION EVALUATION LOG

		MD meters 1:500	LITHOLOGY %	INTERPRETED LITHOLOGY	RESISTIVITY	CHROMATOGRAPH	CUT FLUORESCENCE DIRECT FLUORESCENCE PFG PFG	CALC Calcite 0 100 Dolomite 100 0	REMARKS
ALL DEPTH MEASURED IN METERS FROM THE ROTARY TABLE (RT)		60							Mudline: 87.8m RT to top of 30" Hsg: 85.8mLAT Water Depth: 65.8m Air Gap: 22.0m
Vertical Datum = Lowest Astronomical Tide (LAT)		70							
		80							
		90							
NB#1 REED Y11C 914mm (36") 3x14,1x16 jets IN: 87.82m Out: 131.7m Drilled 43.88m in 2.70hrs 1-1-NO-A-3-I-NO-TD		100							Spud Henry-2 Well from 87.82m on 25/08/2008 at 03.00hrs
		110							
		120							
WOB: 3-14klbs RPM: 37-100 GPM: 895-1005 SPP: 520-855psi		130							
30" Casing		140							Drill with sea water with occasional PHG sweeps. Returns to sea floor.
		150							
NB#2 HUGHES MXL-TV 445mm (17.5") JETS 4 X 18 IN 131.7m OUT 657m DRILLED 525.3m in 11.92hrs									Set 30" Casing at 131.70m
									Drill with sea water with occasional PHG sweeps. Returns to sea floor.



Drill with sea water with occasional PHG sweeps. Returns to sea floor.

Drill with sea water with occasional PHG sweeps. Returns to sea floor.



Drill with sea water with occasional PHG sweeps. Returns to sea floor.

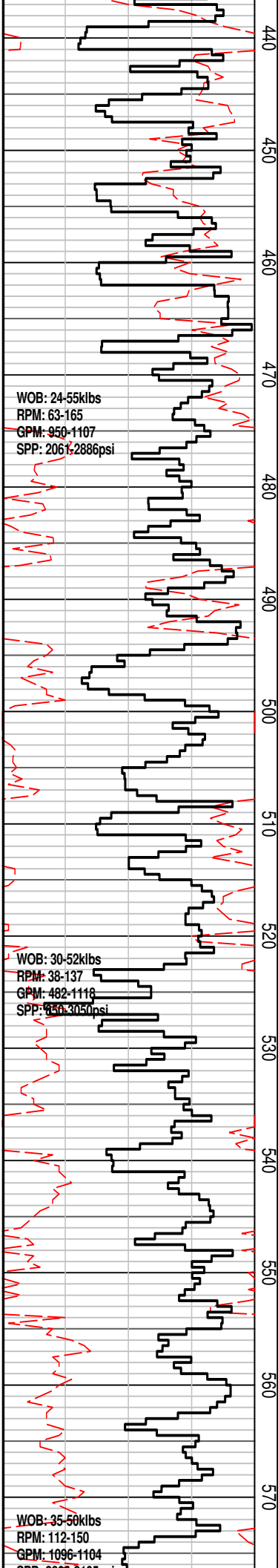
Drill with sea water with occasional PHG sweeps. Returns to sea floor.

Drill with sea water with occasional PHG sweeps. Returns to sea floor.

WOB: 12.4klbs  
RPM: 106-151  
GPM: 990-1916  
SPP: 2135-2270psi

WOB: 19.48klbs  
RPM: 76-141  
GPM: 984-1029  
SPP: 2116-2438psi

WOB: 7.44klbs  
RPM: 71-148  
GPM: 1026-1032  
SPP: 2343-2530psi



WOB: 24-55klbs  
RPM: 63-165  
GPM: 950-1107  
SPP: 206-2886psi

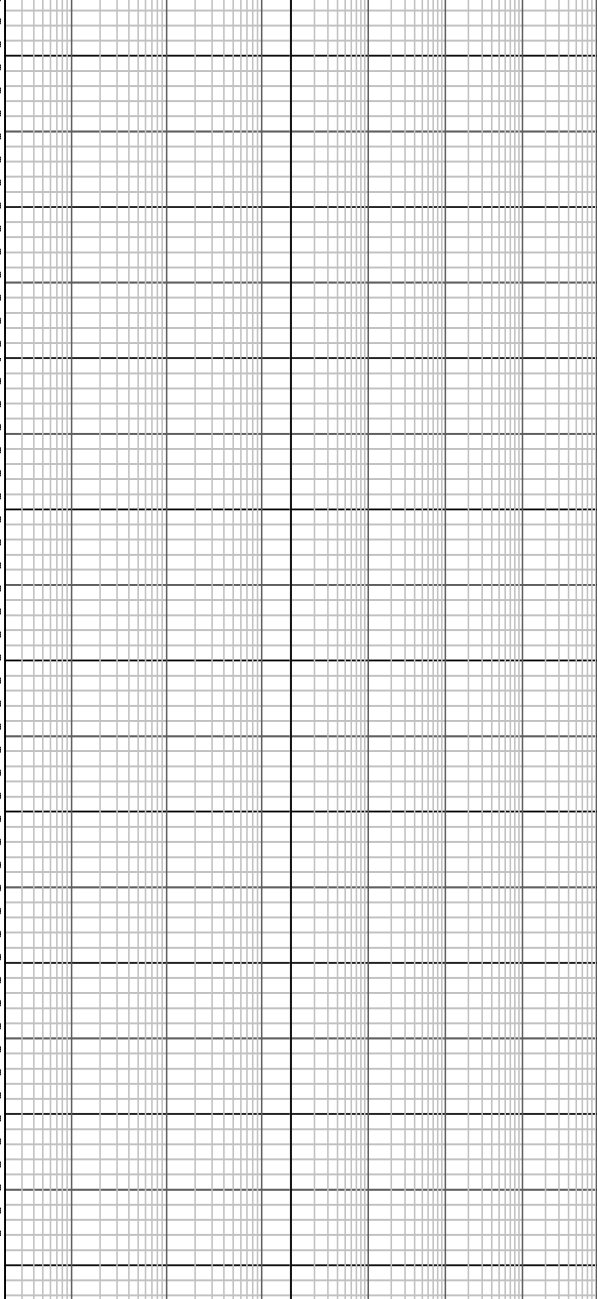
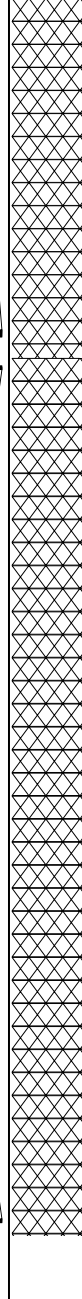
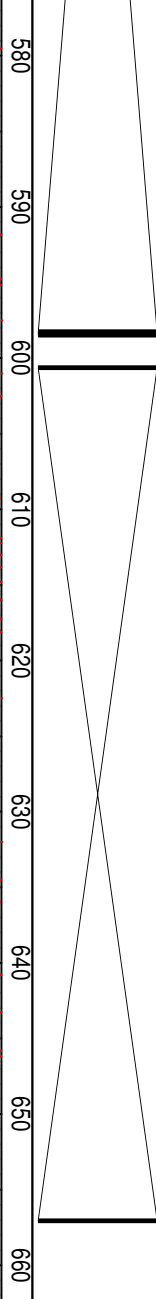
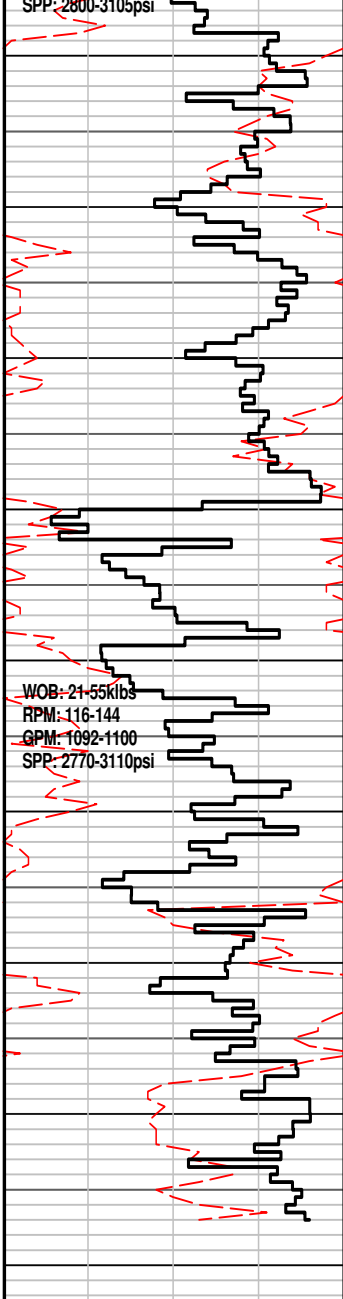
WOB: 30-52klbs  
RPM: 38-137  
GPM: 482-1118  
SPP: 150-3050psi

WOB: 35-50klbs  
RPM: 112-150  
GPM: 1096-1104  
SPP: 206-2886psi

Drill with sea water with occasional PHG sweeps. Returns to sea floor.

Drill with sea water with occasional PHG sweeps. Returns to sea floor.

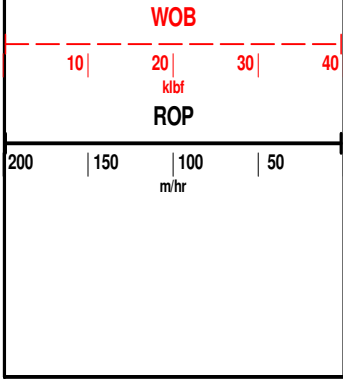
Drill with sea water with occasional PHG sweeps. Returns to sea floor.



Drill with sea water with occasional PHG sweeps. Returns to sea floor.

Drill with sea water with occasional PHG sweeps. Returns to sea floor.

### HENRY-2 FORMATION EVALUATION LOG



M/D meters 1:500  
LITHOLOGY %

INTERPRETED LITHOLOGY

RESISTIVITY

CHROMATOGRAPH

CUT FLUORESCENCE	Calcite	0	100
	Dolomite	100	0
DIRECT FLUORESCENCE	PFG		
	PFG		

REMARKS