



FORMATION EVALUATION LOG

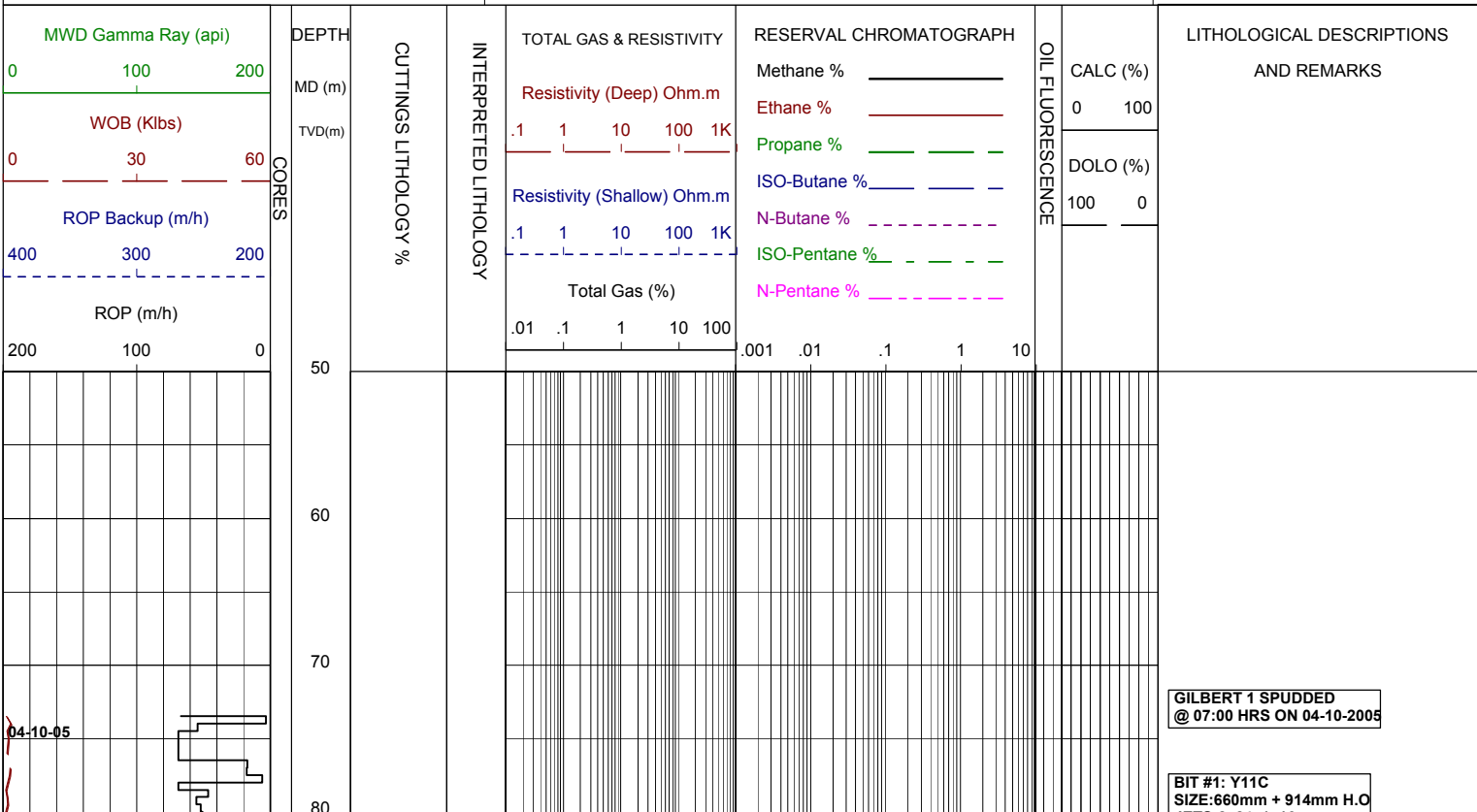
WELL : GILBERT 1

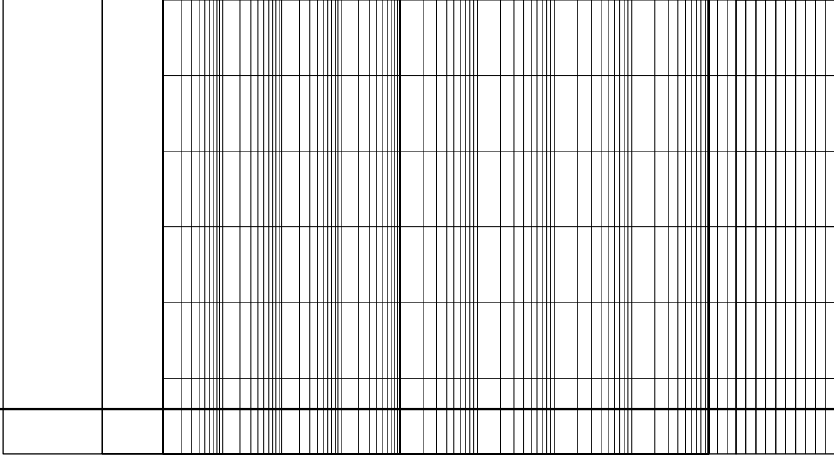
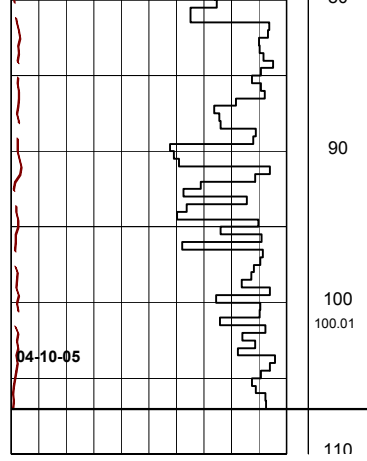


FROM (m): 50 TO (m): 110 SCALE: 1/ 500

Country : AUSTRALIA	Latitude : 37°57'10.64"S	762mm Shoe at (mMDRT) :	Spud Date : 04-10-2005
Region : VICTORIA	Longitude : 148°22'26.02"E	244mm Shoe at (mMDRT) :	Total Depth Date :
Field :	X (m) :		Total Depth (mRT) :
Permit : VIC/P-47	Y (m) :		T.V.D. (mSS MSL) :
Well Type : VERTICAL EXPLORATION	RT-MSL (m) :		Status : P & A
Rig Name : OCEAN PATRIOT	RT-Seabed (m) :		

ABBREVIATIONS	LITHOLOGY LEGEND	ENGINEERING LEGEND	
MW MUD WEIGHT FV FUNNEL VISCOSITY PV PLASTIC VISCOSITY YP YIELD POINT FC FILTER CAKE WL FILTRATE SD SAND - % S SALINITY - PPM RM MUD RESISTIVITY RMF MUD FILTRATE C CARBIDE TEST LAT LOGGED AFTER TRIP DS DEVIATION SURVEY	NB NEW BIT RR RERUN BIT CB CORE BIT WOB WEIGHT ON BIT RPM REVS PER MINUTE FLC FLOW CHECK CR CIRCULATE RETURNS PR POOR RETURNS NR NO RETURNS BG BACKGROUND GAS TG TRIP GAS STG SHORT TRIP GAS CG CONNECTION GAS SG SWAB GAS SVG SURVEY GAS	Limestone Med Sandstone Fine Sandstone Siltstone Claystone Calcarenite Calcisiltite Calcilutite Anhydrite Coal Marl Dolomite Carb. Siltstone Calc Claystone Lithic frag Foraminifera Pyrite Glauconite Mica Ferrous Fossils Calcareous Dolomitic Chert	Deviation Survey Casing Shoe Wiper Trip SWC (rec) SWC (unrec) Core Bit Trip





JETS:2x24, 1x16
IN: 73.2m OUT:107.2m
RUN: 34m HRS: 1.8

DRILL WITH SEA WATER
RETURNS TO SEABED

762mm CONDUCTOR WAS UNABLE TO
BE RUN INTO HOLE AND THE WELL
WAS RE-SPUDED