



PRESSURE EVALUATION LOG

WELL : GILBERT 1A



FROM (m): 50 TO (m): 820 SCALE: 1/ 500

Country : AUSTRALIA
 Region : VICTORIA
 Field :
 Permit : VIC/P-47
 Well Type : VERTICAL EXPLORATION
 Rig Name : OCEAN PATRIOT

POSITION
 Latitude : 37°57'10.72"S
 Longitude : 148°22'25.90"E
 X (m) : 5,798,512.1 mE
 Y (m) : 620,701.1 mE
 RT-LAT (m) : 21.5
 RT-Seabed (m) : 72.8

CASING
 508mm Shoe at (mMDRT) : 106m
 340mm Shoe at (mMDRT) : 331m

Spud Date : 04-10-2005
 Total Depth Date :
 Total Depth (mRT) :
 T.V.D. (mSSLAT) :
 Status : P & A

ABBREVIATIONS

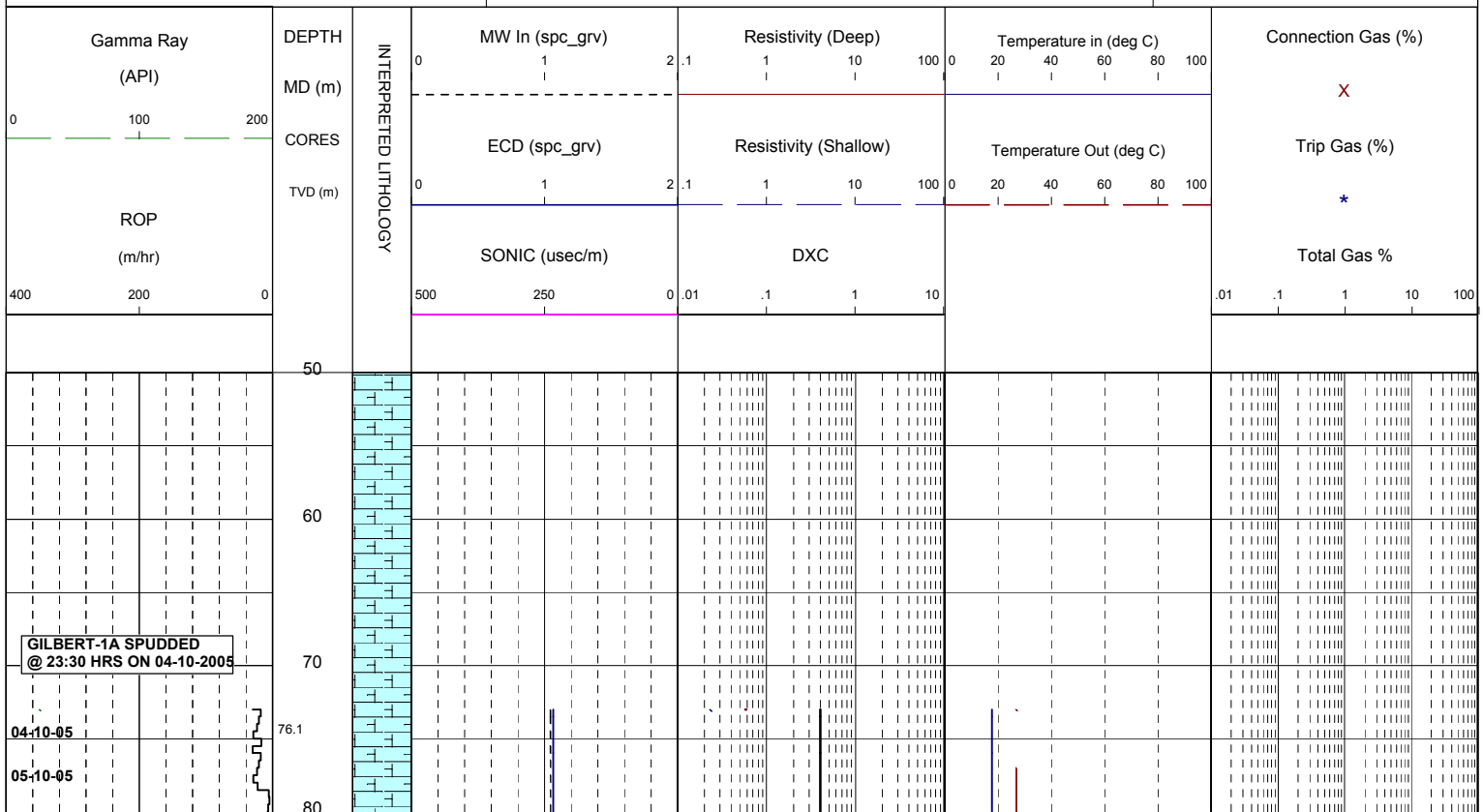
MW MUD WEIGHT	NB NEW BIT
FV FUNNEL VISCOSITY	RR RERUN BIT
PV PLASTIC VISCOSITY	CB CORE BIT
YP YIELD POINT	WOB WEIGHT ON BIT
FC FILTER CAKE	RPM REVS PER MINUTE
SOL SOLIDS	FLC FLOW CHECK
WL FILTRATE	CR CIRCULATE RETURNS
SD SAND - %	PR POOR RETURNS
S SALINITY - PPM	NR NO RETURNS
RM MUD RESISTIVITY	BG BACKGROUND GAS
RMF MUD FILTRATE	TG TRIP GAS
C CARBIDE TEST	STG SHORT TRIP GAS
LAT LOGGED AFTER TRIP	CG CONNECTION GAS
DS DEVIATION SURVEY	SG SWAB GAS
	SVG SURVEY GAS

LITHOLOGY LEGEND

	Limestone		Anhydrite		Pyrite
	Med Sandstone		Coal		Glauconite
	Fine Sandstone		Marl		Mica
	Siltstone		Dolomite		Ferrous
	Claystone		Carb. Siltstone		Fossils
	Calcarenite		Calc Claystone		Calcareous
	Calcsiltite		Lithic frag		Dolomitic
	Calclutite				

ENGINEERING LEGEND

	Deviation Survey
	Casing Shoe
	Wiper Trip
	SWC (rec)
	SWC (unrec)
	Core
	Bit Trip

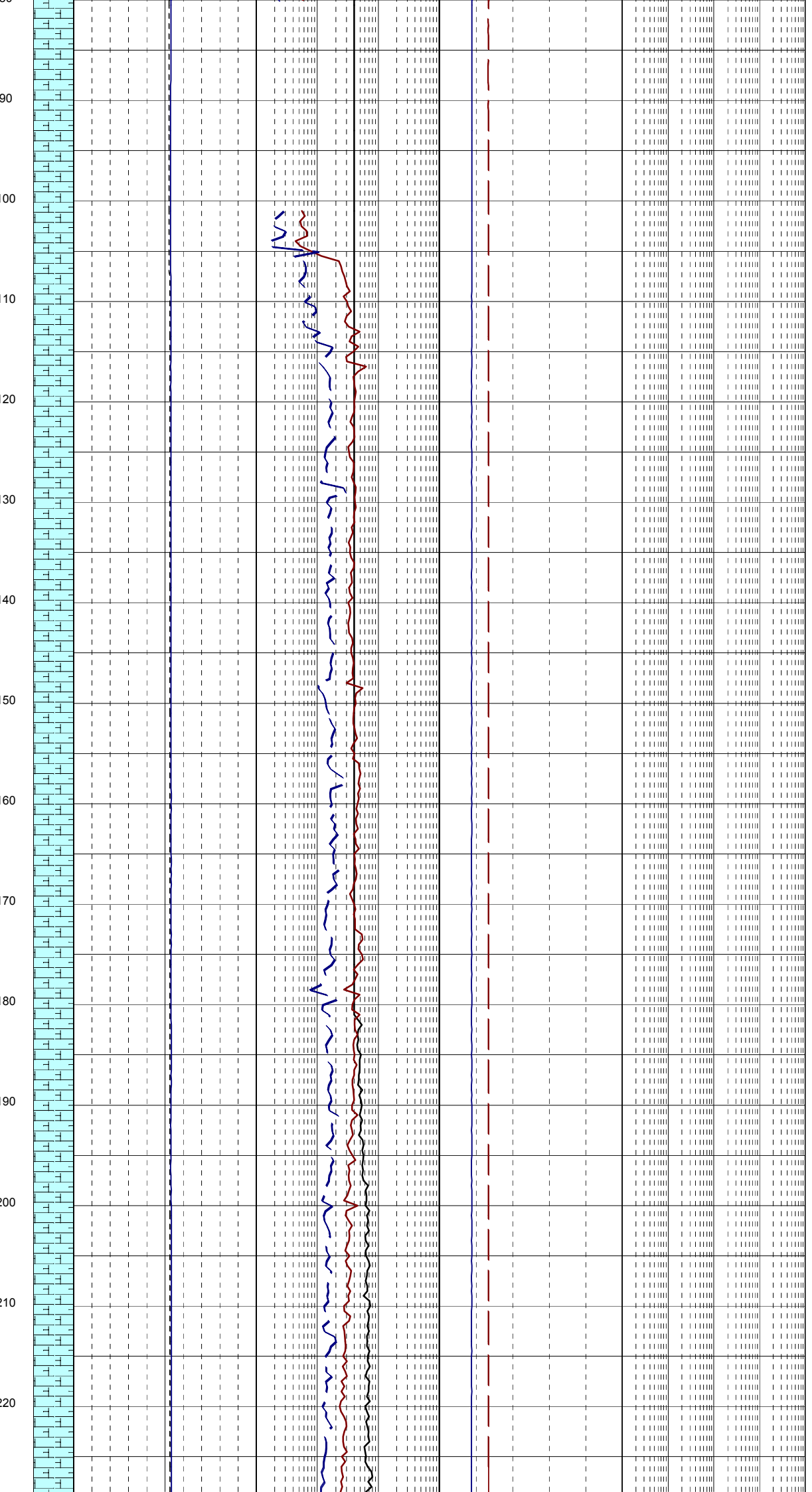


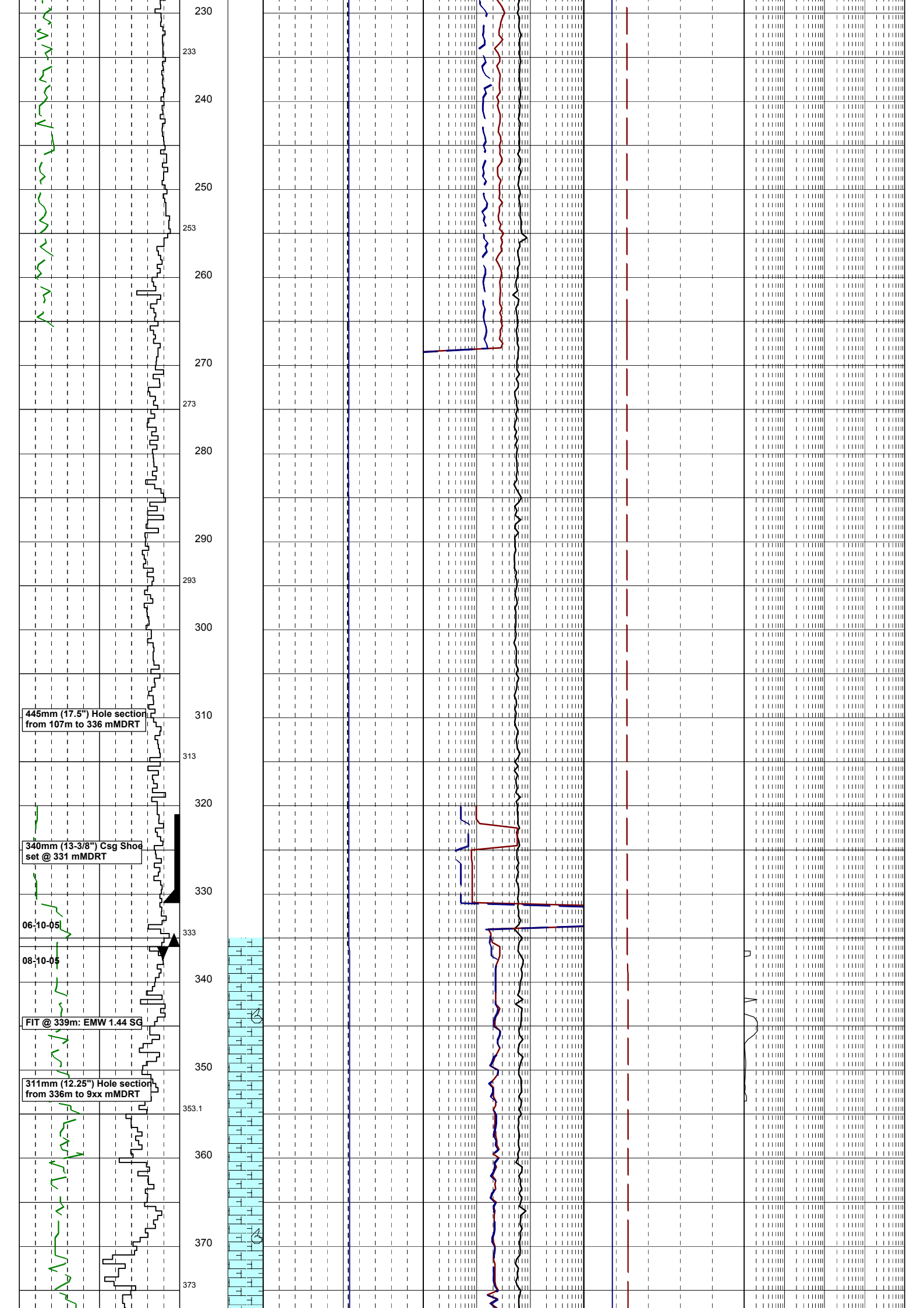
914mm (36") Hole section
from 72.8m to 107 mMDRT

508mm (20") Csg Shoe
set @ 106 mMDRT

06-18-05

88
90
93
100
110
113
120
130
133
140
150
153
160
170
173
180
190
193
200
210
213
220





445mm (17.5") Hole section
from 107m to 336 mMDRT

340mm (13-3/8") Csg Shoe
set @ 331 mMDRT

06-10-05

08-10-05

FIT @ 339m: EMW 1.44 SG

311mm (12.25") Hole section
from 336m to 9xx mMDRT

230
233
240
250
253
260
270
273
280
290
293
300
310
313
320
330
333
340
350
353.1
360
370
373

