



FORMATION EVALUATION LOG

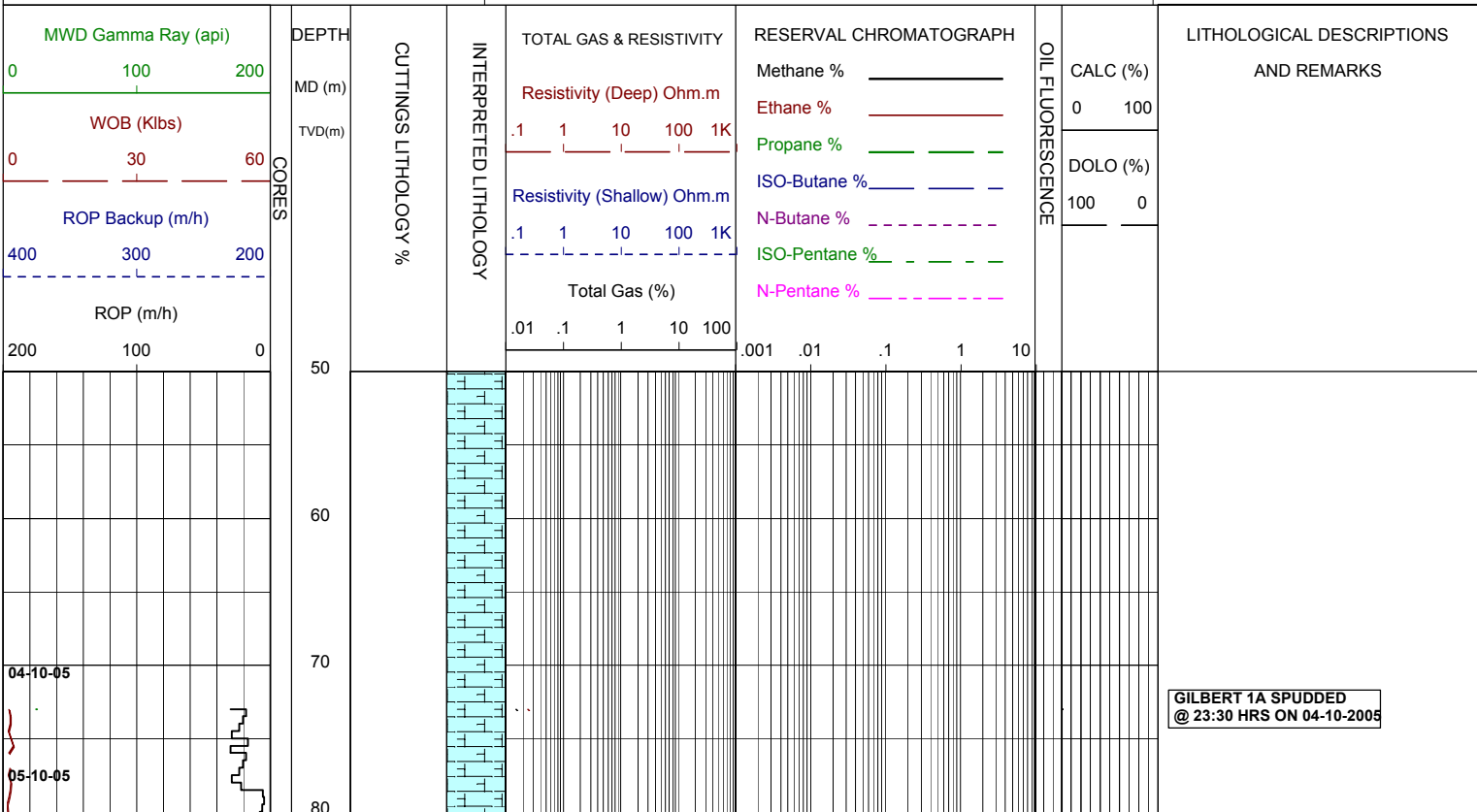


WELL : GILBERT 1A

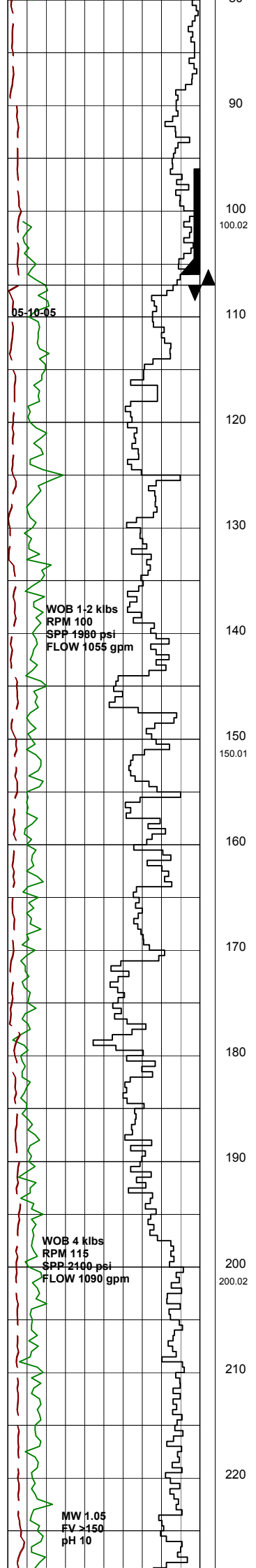
FROM (m): 50 TO (m): 820 SCALE: 1/ 500

Country : AUSTRALIA Region : VICTORIA Field : Permit : VIC/P-47 Well Type : VERTICAL EXPLORATION Rig Name : OCEAN PATRIOT	POSITION Latitude : 37°57'10.72"S Longitude : 148°22'25.90"E X (m) : 5,798,512.1 mN Y (m) : 620,701.1 mE RT-MSL (m) : 21.5 RT-Seabed (m) : 72.8	CASING 508mm Shoe at (mMDRT) : 106m 340mm Shoe at (mMDRT) : 331m	Spud Date : 04-10-2005 Total Depth Date : Total Depth (mRT) : T.V.D. (mSS MSL) : Status : P & A
--	--	---	--

ABBREVIATIONS	LITHOLOGY LEGEND	ENGINEERING LEGEND	
MW MUD WEIGHT FV FUNNEL VISCOSITY PV PLASTIC VISCOSITY YP YIELD POINT FC FILTER CAKE WL FILTRATE SD SAND - % S SALINITY - PPM RM MUD RESISTIVITY RMF MUD FILTRATE C CARBIDE TEST LAT LOGGED AFTER TRIP DS DEVIATION SURVEY	NB NEW BIT RR RERUN BIT CB CORE BIT WOB WEIGHT ON BIT RPM REVS PER MINUTE FLC FLOW CHECK CR CIRCULATE RETURNS PR POOR RETURNS NR NO RETURNS BG BACKGROUND GAS TG TRIP GAS STG SHORT TRIP GAS CG CONNECTION GAS SG SWAB GAS SVG SURVEY GAS	Limestone Med Sandstone Fine Sandstone Siltstone Claystone Calcarenite Calcsiltite Calcilutite Anhydrite Coal Marl Dolomite Carb. Siltstone Calc Claystone Lithic frag Foraminifera Pyrite Glauconite Mica Ferrous Fossils Calcareous Dolomitic Chert	Deviation Survey Casing Shoe Wiper Trip SWC (rec) SWC (unrec) Core Bit Trip



GILBERT 1A SPUNDED @ 23:30 HRS ON 04-10-2005



05-10-05

WOB 1-2 klbs
RPM 100
SPP 1980 psi
FLOW 1055 gpm

WOB 4 klbs
RPM 115
SPP 2400 psi
FLOW 1090 gpm

MW 1.05
FV >150
pH 10

BIT #1: Y11C
SIZE:660mm + 914mm H.O
JETS:2x24, 1x16
IN: 72.8m OUT:107m
RUN: 34m HRS: 3.5
COND:

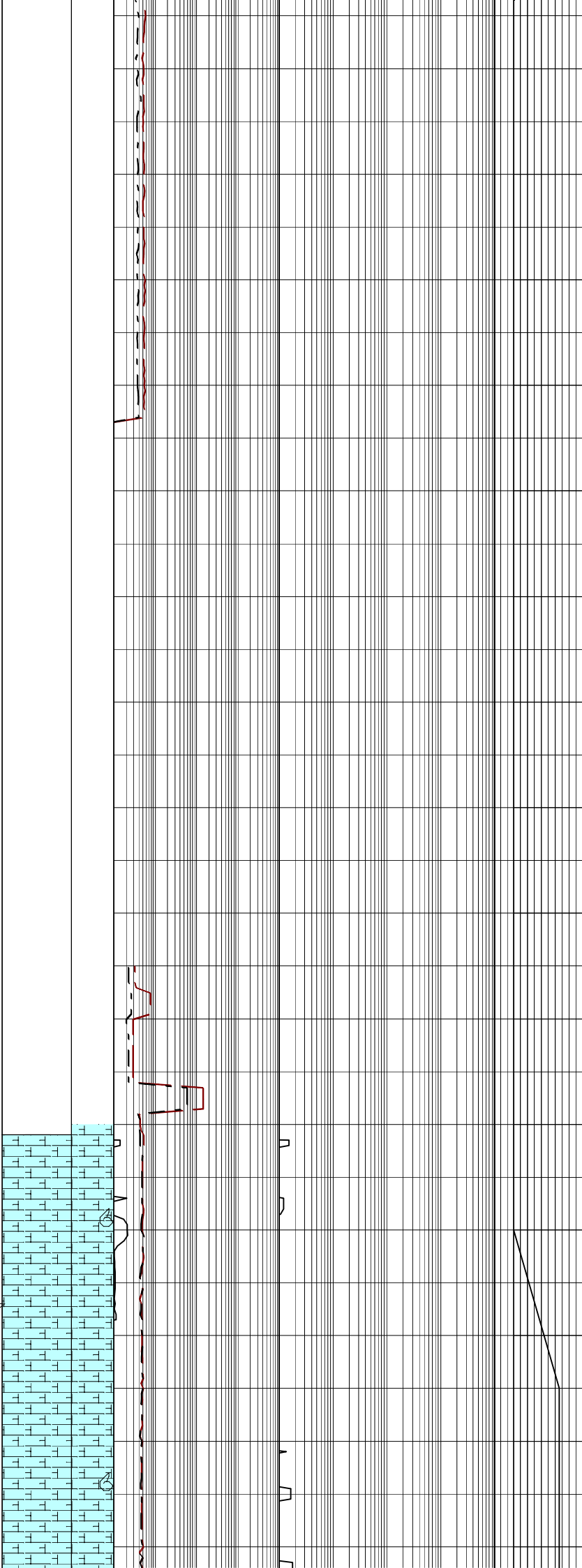
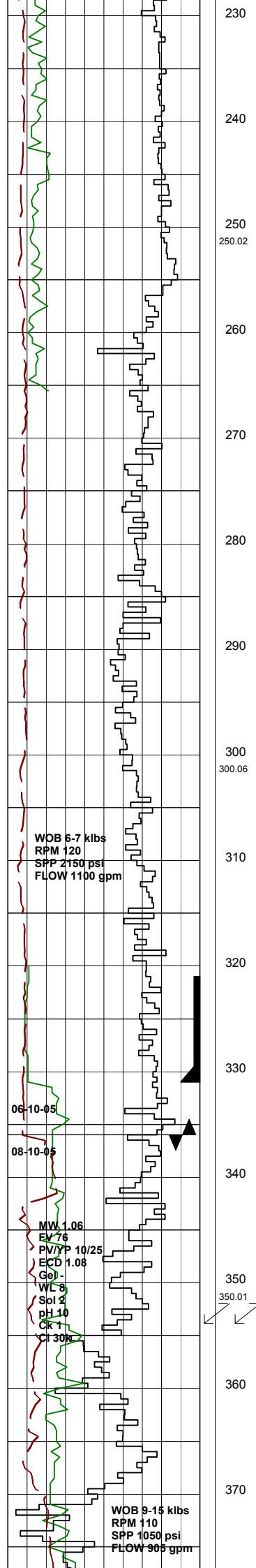
DRILL WITH SEA WATER
RETURNS TO SEABED

508mm (20") Casing Shoe
set @ 106 mMDRT

BIT #2: REED T11
SIZE:445mm (17.5")
JETS:3x22, 1x16
IN: 107m OUT:336m
RUN:236m HRS:4.9
COND:

DRILL WITH SEA WATER
RETURNS TO SEABED

DRILL WITH SEA WATER
RETURNS TO SEABED



DRILL WITH SEA WATER
RETURNS TO SEABED

340mm (13 3/8") Casing Shoe
set @ 331 mMDRT

BIT #3: REED EHP41HK
SIZE:311mm (12 1/4")
JETS:2x24,1x28
IN:336m OUT:810m
RUN:474m HRS:23.7
COND:

FIT @ 339m: EMW 1.44 SG

DRILL AHEAD WITH KCL/PHPA
MUD SYSTEM FROM 336 mMDRT

Survey @ 354.01m: 0.08°, 136.48Az

ARGILLACEOUS CALCILUTITE:pl gy.g/t
CLCSLT i/p,tr foss frags,vstf,disp,
amorph.

CALCARENITE(Tr):wh-pl yellsh brn,
crs-vcrs foss frags,tr fn dk gn glauc,
tr pyr.

380
390
400
410
420
430
440
450
460
470
480
490
500
510
520

Survey @ 382.62m: 0.06°, 186.67Az

Survey @ 411.20m: 0.06°, 90.36Az

ARGILLACEOUS CALCILUTITE: pl gnsh
gy-wh, g/t CLCSLT i/p, tr foss frags,
v sft, disp, amorph.

MARL: v lt-med gy, v sft-sft, disp,
amorph.

Survey @ 440.82m: 0.26°, 21.62Az

Survey @ 468.30m: 0.51°, 355.61Az

MARL: v lt-med gy, v sft-sft, disp
i/p, amorph.

CALCILUTITE: arg, sft-sli frm, mass, v lt
-med gy & grn/gy, tr dk gy, arg mtx,
grad to CLCSLT i/p, tr foss frags,
tr fn dk grn dissem glauc & tr med-crs
nod glauc, tr fn pyr,

Survey @ 496.89m: 0.83°, 08.64Az

CLAYSTONE: v lt-med gy & gn gy, arg,
grad to CLCLUT and arg CLCSLT i/p,
tr foss frags, tr f & crs dk gn
dissem glauc, tr f pyr, sft-sli frm.

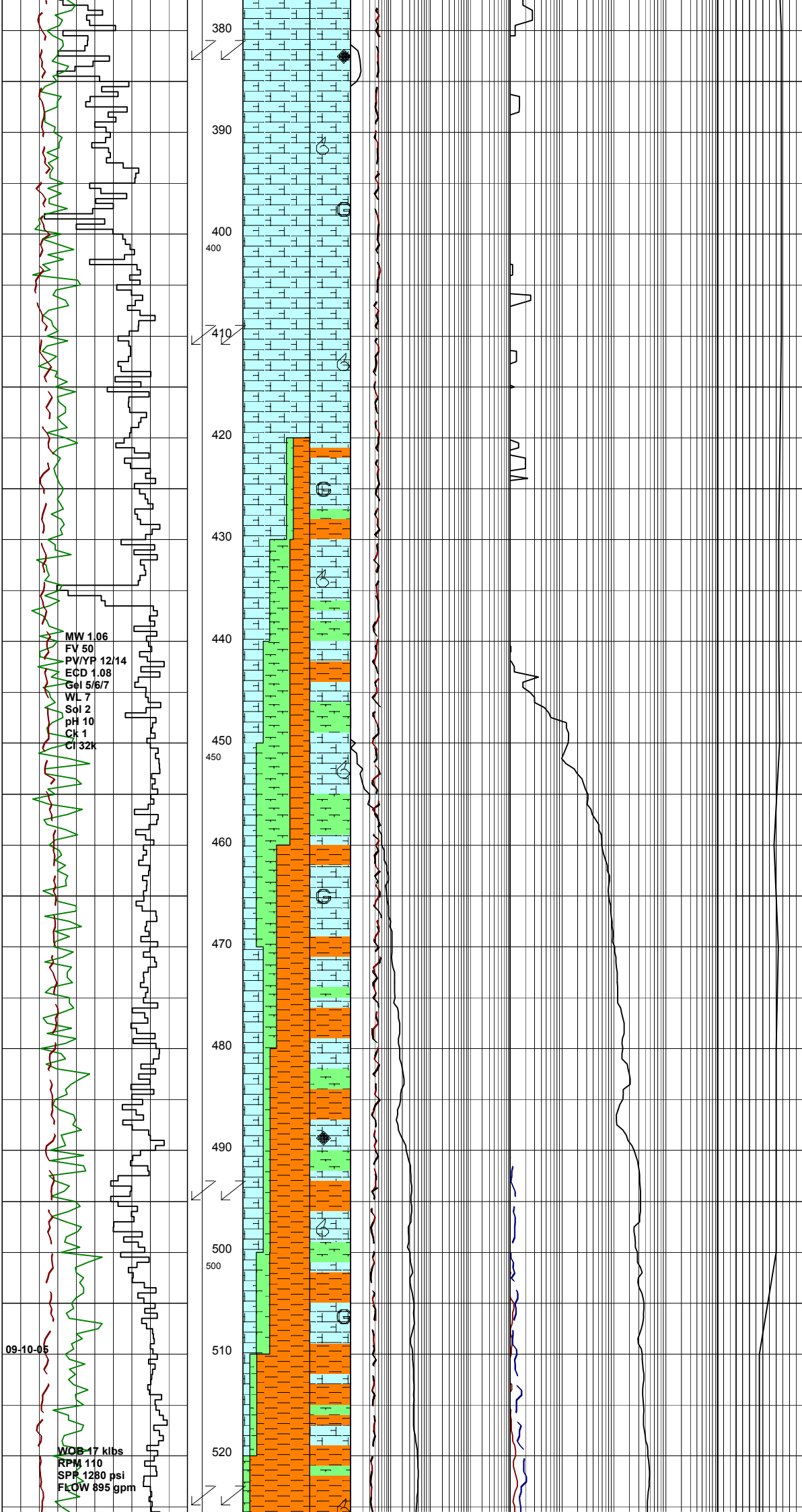
MARL: v lt-med gy, v sft-sft, grad
to arg CLCLUT i/p, tr foss frags
& forams, tr vf dk gn dissem glauc.

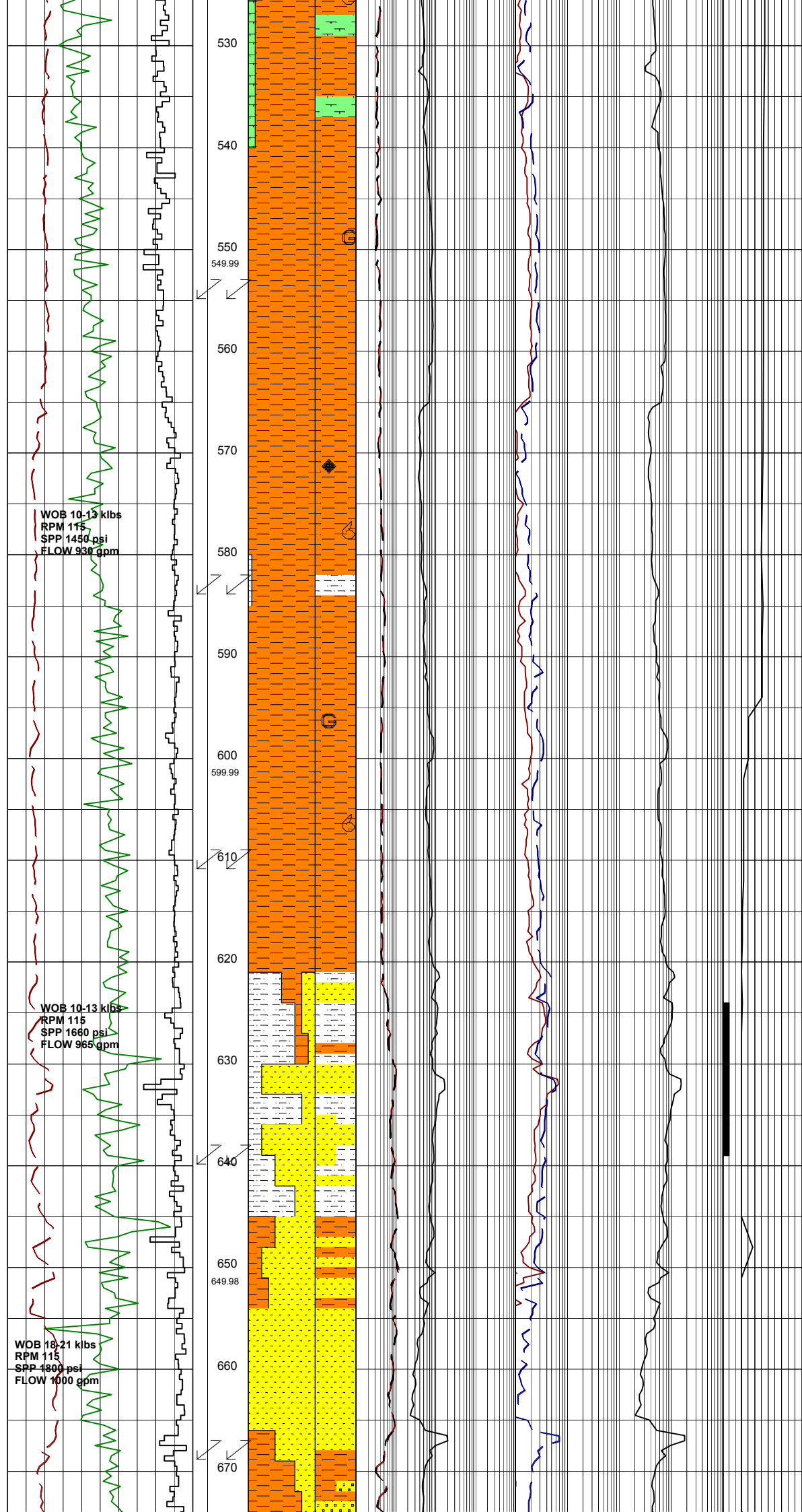
Survey @ 525.57m: 0.82°, 10.05Az

MW 106
FV 50
PV/YP 12/14
ECD 1.08
Gel 5/6/7
WL 7
Sol 2
pH 10
Ck 1
Cl 32k

09-10-05

WOB 17 klbs
RPM 110
SPR 1280 psi
FLOW 895 gpm





CLAYSTONE:lt gy-bn gy,tr lt gn/gy,sft, calc mtx i/p,tr lt bn/yel foss frags, tr f dk gn dissem glauc,tr f pyr.

MARL:vlt-lt med gy,v sft-sft,grad to arg CLCLUT i/p,tr foss frags & forams,clay mtx,disp.

Survey @ 554.34m: 0.83°,16.56Az

CLAYSTONE:lt gy-bn gy,tr lt gn/gy,sft, calc mtx i/p,com lt bn/yel foss frags, com forams,rr f dk dissem glauc,tr pyr,amorph.

CONTROL DRILLING FROM 566m

MARL(Tr):v lt-lt med gy,v sft-sft,grad to arg CLCLUT i/p,tr foss frags & forams,disp.

SILTSTONE:med-dk yel/bn,dk bn/gry-bn/ blk,det clay mtx,grad to arg SLTST, loc aren grad to aren SLTST,tr f-crs glauc,tr dk liths,qtz silt-vf qtz, nil-vpr vis por,no fluor.

Survey @ 583.14m: 0.79°,24.58Az

CLAYSTONE:lt gy-bn/gy,calc mtx,com lt bn/yel foss frags,abdt f dk gn dissem & nod glauc,tr f pyr,rr crs nod pyr,sft-amorph.

Survey @ 611.86m:0.73°,26.07Az

SILTSTONE:lt-med gy brn & lt bn/yel, tr-rr f dk gn dissem glauc and nod, sft-frn,hd i/p,blky-amorph.

SANDSTONE:med yel/bn,vf-f,sbang-sbrnd,mod-vwl srt,slty/kaol mtx, tr f glauc,tr dk liths,frm-fri,pr-gd inf por,fluor.

FLUOR:624-639m:20%;dull-mod brit yel fluor,mod fst blu-wh cut,solid yel-gn R/R.

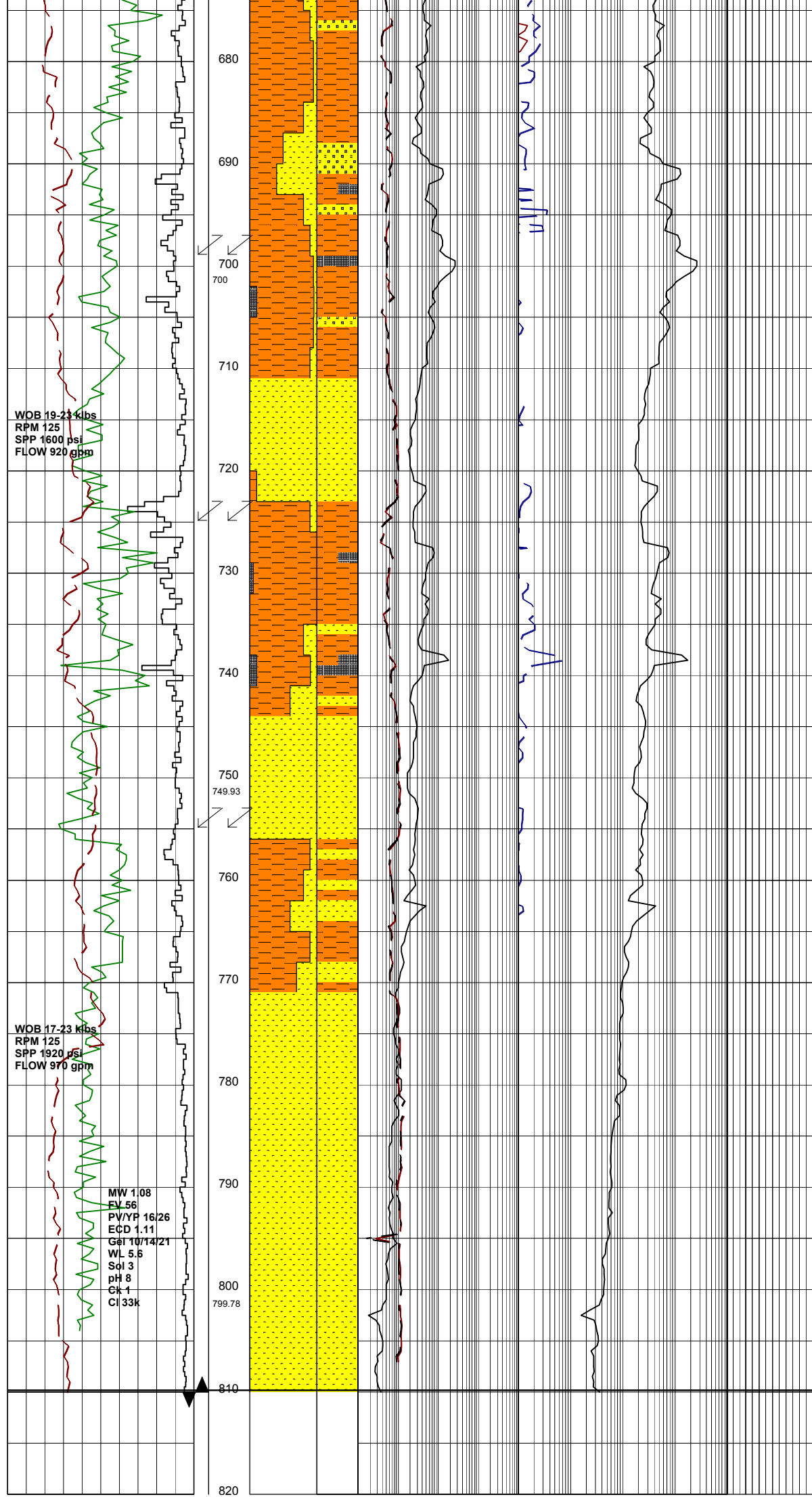
Survey @ 640.35m:0.74°,39.34Az

SANDSTONE:med gn,vf-f,sbang-sbrnd, mod wl srt,occ arg mtx,f nod glauc,, tr mica,frm,fri-sft,lse i/p,pr-gd inf por,no fluor.

SANDSTONE:pl-dk yel/bn,dom f, sbang,mod wl srt,occ det clay mtx, tr glauc tr mica i/p,tr felds,frm-hd,nil-occ fr vis por,no fluor.

Survey @ 668.67m: 1.16°, 39.13Az

CLAYSTONE:wh-lt ay lt gn/ay lt bn/ay



WOB 19-23 klbs
RPM 125
SPP 1600 psi
FLOW 920 gpm

WOB 17-23 klbs
RPM 125
SPP 1920 psi
FLOW 970 gpm

MW 1.08
EV 56
PV/YF 16/26
ECD 1.11
Gel 10/14/21
WL 5.6
Sol 3
pH 8
Ck 1
Cl 33k

SANDSTONE: med lt gy, sft-fri, disp i/p, vf-f, arg, sbrnd-ang, tr-25% clay mtx, tr-10% sid & pyr cmt, non calc, com lith frags, tr v crs pyr nods, nil-pr vis por, no fluor.

Survey @ 696.97m: 1.81°, 49.33A2

COAL: bn/blk-blk, frm-hd, blk, brit, dll, interb w/- CLYST i/p, tr f pyr, lrg frags.

SANDSTONE: med-lt gy, gy/org-dk yel/org, gn/gy, blk, sft-frm, fri, hd i/p, vf-med, sbang-rnd, mod-wl srt, tr-25% clay mtx, tr carb & pyr cmt, com feld, com lith frags, nil-pr vis por, no fluor.

CLAYSTONE: lt-med gy, lt gn/gy i/p, sft, disp-hd i/p, blk, splint i/p, tr-10% silty/sandy i/p, tr-10% chl mtx/cmt i/p, tr-40% f carb frags, mnr carb lam, tr f pyr.

Survey @ 725.55m: 2.46°, 52.44A2

COAL: bn/blk-blk, frm-hd, blk, brit, dll, interbed w/- CLYST i/p, tr f pyr, lrg frags.

SANDSTONE: med lt gy, gy/org-dk yel org, gn/gy, blk, sft-frm, fri, lse i/p, hd i/p, blk, vf-med, sbrnd-ang, mod-wl srt, com feld & lith frags, mnr clay mtx, non-sli calc, tr carb & pyr cmt, nil-pr vis por, no fluor.

Survey @ 754.63m: 3.08°, 49.24A2

CLAYSTONE: med gy-med dk gy-dk gn/gy, frm-hd, blk, splint i/p, tr f carb flks & grns, f dk bn-blk carb lam i/p, tr f pyr.

SANDSTONE: lt-med lt gy-gn/gy, vf-v crs, pr-wl srt, sbrnd-ang, feld & lith frags, mnr clay mtx, non-sli calc, tr carb & pyr cmt, sft-frm, fri, lse i/p, nil-pr vis vis por, no fluor.

Survey @ 783.11m: 3.20°, 51.74A2

SANDSTONE: lt-med lt gy-gn/gy, med lt gy org-dk yel org, vf-c crs, pr-wl srt, sbrnd-ang, feld & liths frags, mnr clay mtx, non-sli calc, tr carb & pyr pyr cmt, sft-frm, fri, lse i/p, hd i/p, nil-pr vis por, no fluor.

Gilbert-1A reached T.D. of 810mMDRT @ 20:00hrs on 9/10/2005

