



FORMATION EVALUATION LOG

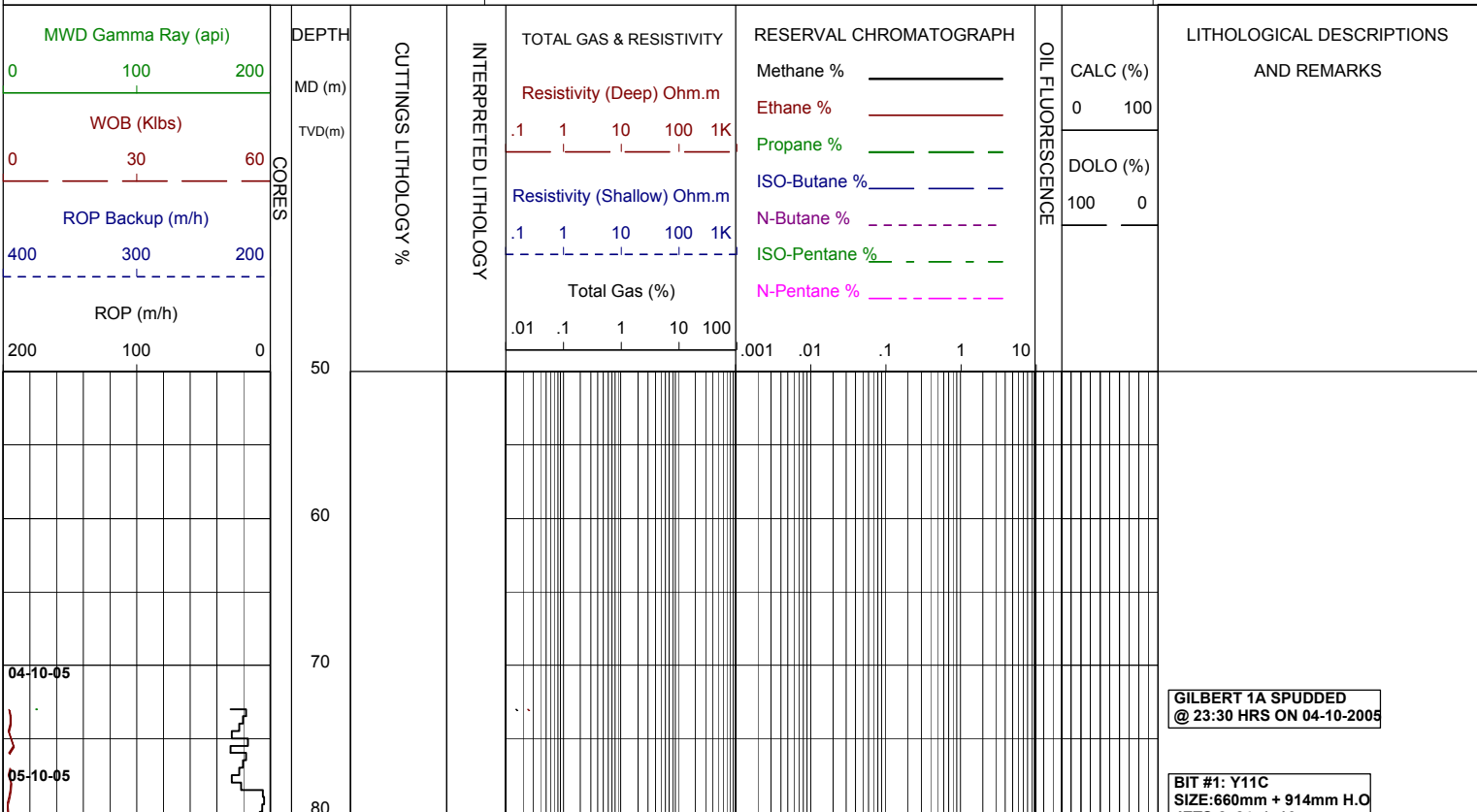


WELL : GILBERT 1A

FROM (m): 50 TO (m): 350 SCALE: 1/ 500

Country : AUSTRALIA Region : VICTORIA Field : Permit : VIC/P-47 Well Type : VERTICAL EXPLORATION Rig Name : OCEAN PATRIOT	POSITION Latitude : 37°57'10.72"S Longitude : 148°22'25.90"E X (m) : 5,798,512.1 mN Y (m) : 620,701.1 mE RT-MSL (m) : 21.5 RT-Seabed (m) : 72.8	CASING 508mm Shoe at (mMDRT) : 106m 340mm Shoe at (mMDRT) : 331m	Spud Date : 04-10-2005 Total Depth Date : Total Depth (mRT) : T.V.D. (mSS MSL) : Status : P & A
--	--	---	--

ABBREVIATIONS	LITHOLOGY LEGEND	ENGINEERING LEGEND	
MW MUD WEIGHT FV FUNNEL VISCOSITY PV PLASTIC VISCOSITY YP YIELD POINT FC FILTER CAKE WL FILTRATE SD SAND - % S SALINITY - PPM RM MUD RESISTIVITY RMF MUD FILTRATE C CARBIDE TEST LAT LOGGED AFTER TRIP DS DEVIATION SURVEY	NB NEW BIT RR RERUN BIT CB CORE BIT WOB WEIGHT ON BIT RPM REVS PER MINUTE FLC FLOW CHECK CR CIRCULATE RETURNS PR POOR RETURNS NR NO RETURNS BG BACKGROUND GAS TG TRIP GAS STG SHORT TRIP GAS CG CONNECTION GAS SG SWAB GAS SVG SURVEY GAS	Limestone Med Sandstone Fine Sandstone Siltstone Claystone Calcarenite Calcisiltite Calcilutite Anhydrite Coal Marl Dolomite Carb. Siltstone Calc Claystone Lithic frag Foraminifera Pyrite Glauconite Mica Ferrous Fossils Calcareous Dolomitic Chert	Deviation Survey Casing Shoe Wiper Trip SWC (rec) SWC (unrec) Core Bit Trip



GILBERT 1A SPUNDED @ 23:30 HRS ON 04-10-2005

BIT #1: Y11C SIZE: 660mm + 914mm H.O

JETS:2x24, 1x16
IN: 72.8m OUT:107m
RUN: 34m HRS: 3.5

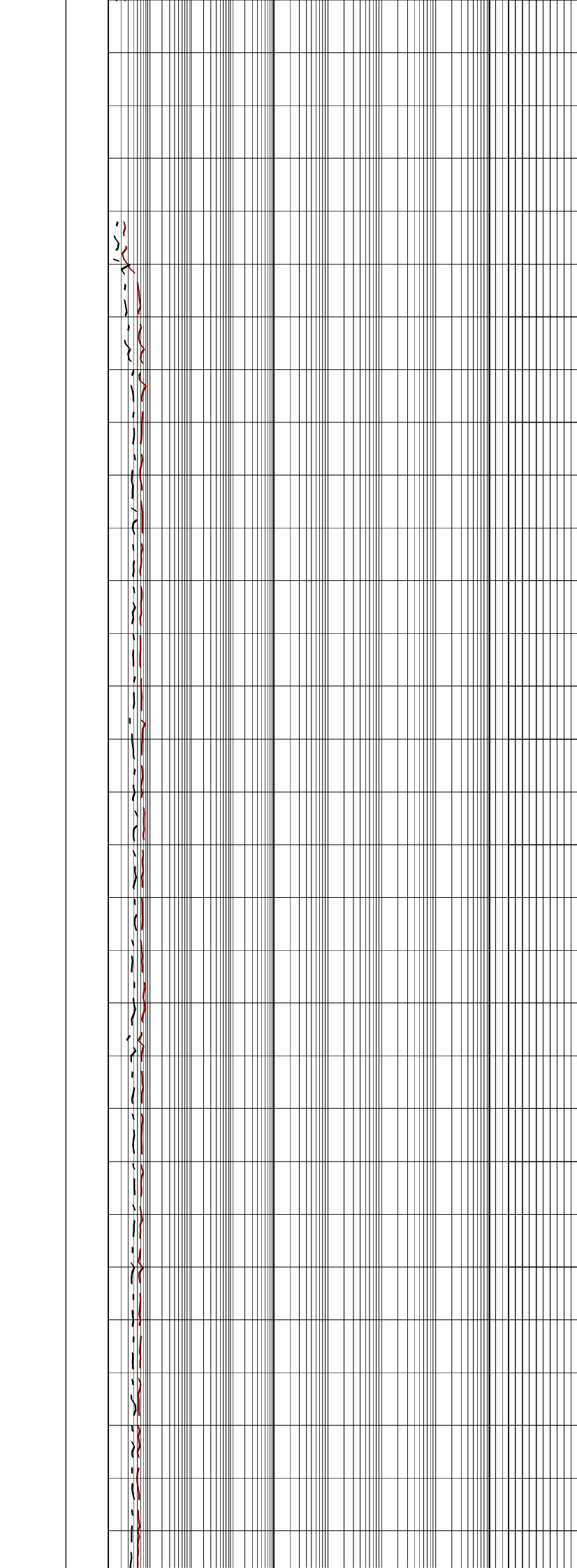
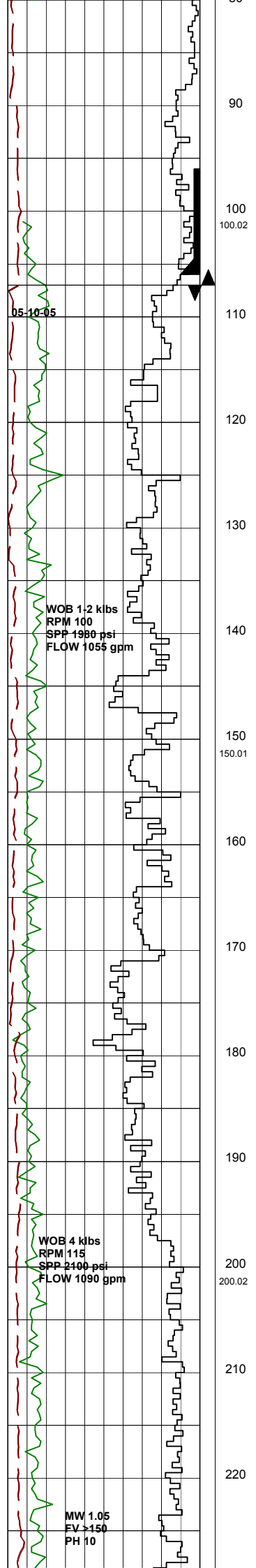
DRILL WITH SEA WATER
RETURNS TO SEABED

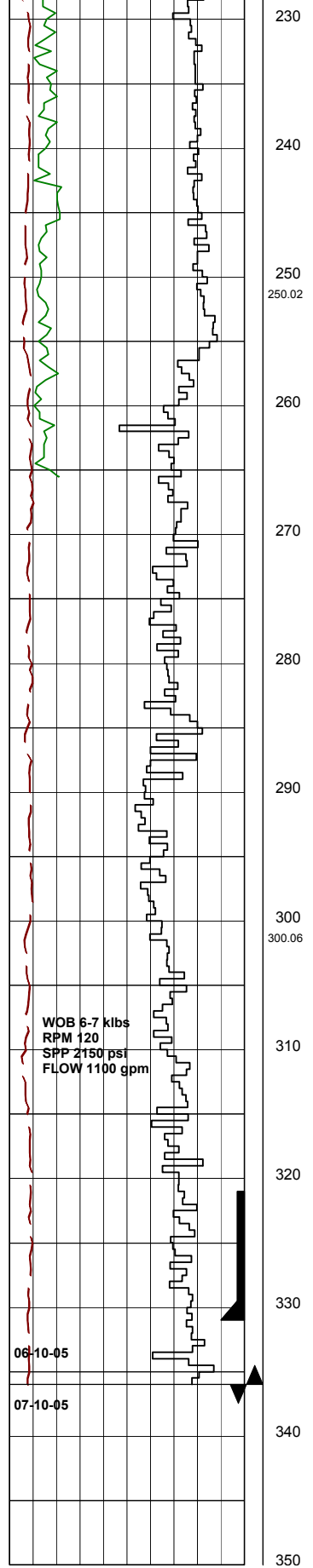
508mm (20") Casing Shoe
set @ 106 mMDRT

BIT #2: REED T11
SIZE: 445mm (17.5")
JETS: 3x22, 1x16
IN: 107m OUT: 336m
RUN: 236m HRS: 4.9

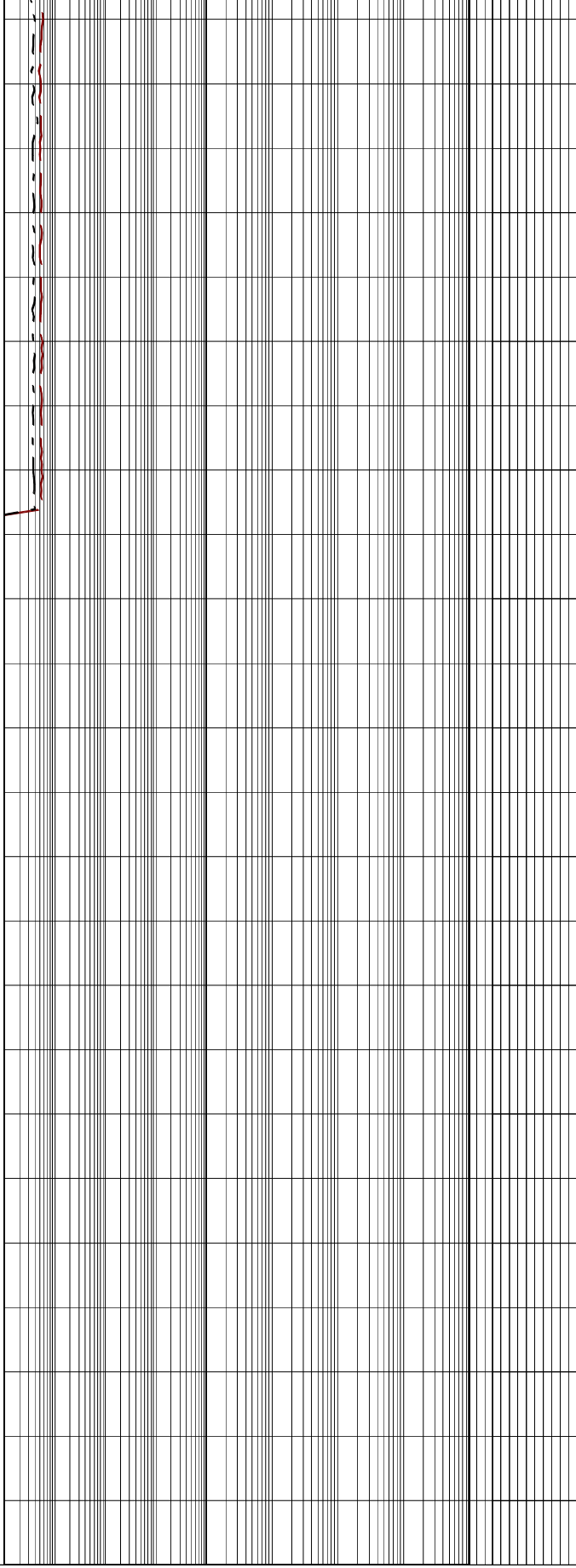
DRILL WITH SEA WATER
RETURNS TO SEABED

DRILL WITH SEA WATER
RETURNS TO SEABED





230
 240
 250
 250.02
 260
 270
 280
 290
 300
 300.06
 310
 320
 330
 340
 350



DRILL WITH SEA WATER
 RETURNS TO SEABED

340mm (13 3/8") Casing Shoe
 set @ 331 mMDRT

BIT #3:
 SIZE:311mm (12 1/4")
 JETS:xxx
 IN: 336m OUT:m
 RUN: m HRS:

