



FORMATION EVALUATION LOG

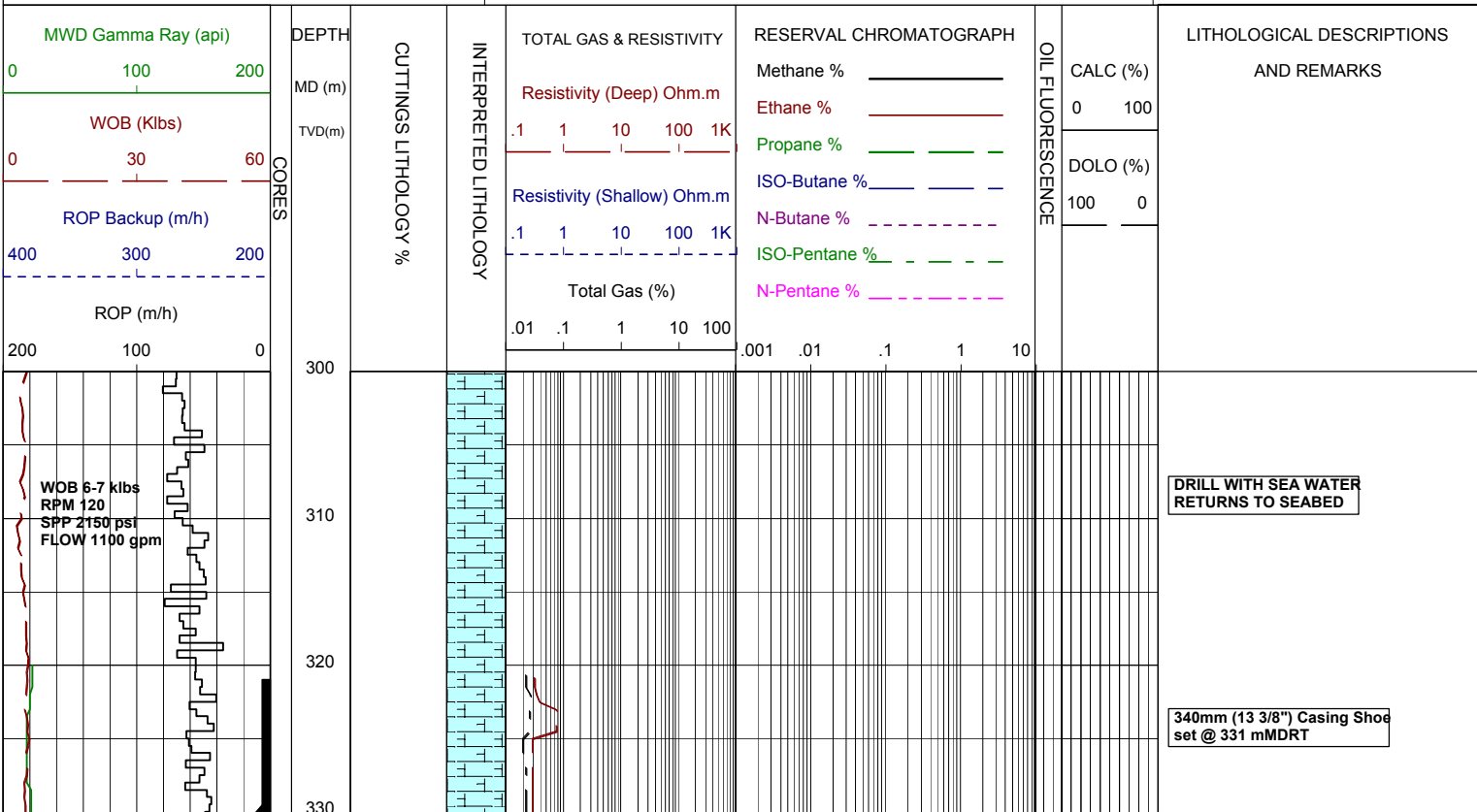


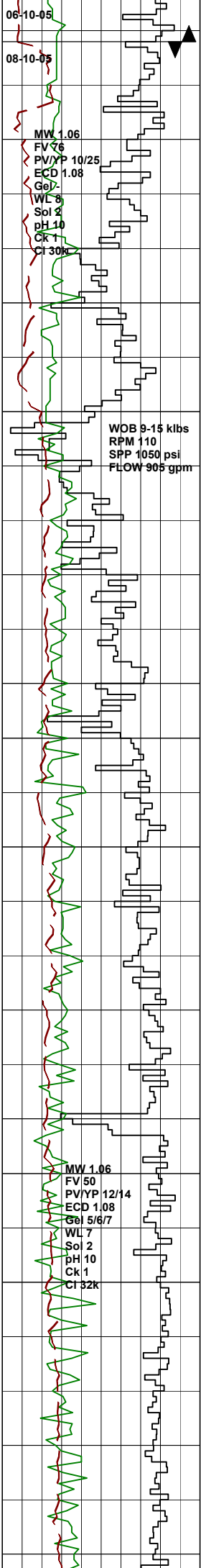
WELL : GILBERT 1A

FROM (m): 300 TO (m): 630 SCALE: 1/ 500

Country : AUSTRALIA Region : VICTORIA Field : Permit : VIC/P-47 Well Type : VERTICAL EXPLORATION Rig Name : OCEAN PATRIOT	POSITION Latitude : 37°57'10.72"S Longitude : 148°22'25.90"E X (m) : 5,798,512.1 mN Y (m) : 620,701.1 mE RT-MSL (m) : 21.5 RT-Seabed (m) : 72.8	CASING 508mm Shoe at (mMDRT) : 106m 340mm Shoe at (mMDRT) : 331m	Spud Date : 04-10-2005 Total Depth Date : Total Depth (mRT) : T.V.D. (mSS MSL) : Status : P & A
--	--	---	--

ABBREVIATIONS MW MUD WEIGHT NB NEW BIT FV FUNNEL VISCOSITY RR RERUN BIT PV PLASTIC VISCOSITY CB CORE BIT YP YIELD POINT WOB WEIGHT ON BIT FC FILTER CAKE RPM REVS PER MINUTE SOL SOLIDS FLC FLOW CHECK WL FILTRATE CR CIRCULATE RETURNS SD SAND - % PR POOR RETURNS S SALINITY - PPM NR NO RETURNS RM MUD RESISTIVITY BG BACKGROUND GAS RMF MUD FILTRATE TG TRIP GAS C CARBIDE TEST STG SHORT TRIP GAS LAT LOGGED AFTER TRIP CG CONNECTION GAS DS DEVIATION SURVEY SG SWAB GAS SVG SURVEY GAS	LITHOLOGY LEGEND 	ENGINEERING LEGEND
---	-----------------------------	-------------------------------





BIT #3: REED EHP41HK
SIZE:311mm (12 1/4")
JETS:2x24,1x28
IN: 336m OUT:m
RUN: m HRS:

FIT @ 339m: EMW 1.44 SG

DRILL AHEAD WITH KCL/PHPA
MUD SYSTEM FROM 336 mMDRT

Survey @ 354.01m: 0.08°,136.48Az

ARGILLACEOUS CALCILUTITE:pl gy,g/t
CLCSLT i/p,tr foss frags,vstf,disp,
amorph.

CALCARENITE(Tr):wh-pl yellsh brn,
crs-vcrs foss frags,tr frn dk gn glauc,
tr pyr.

Survey @ 382.62m: 0.06°,186.67Az

Survey @ 411.20m: 0.06°,90.36Az

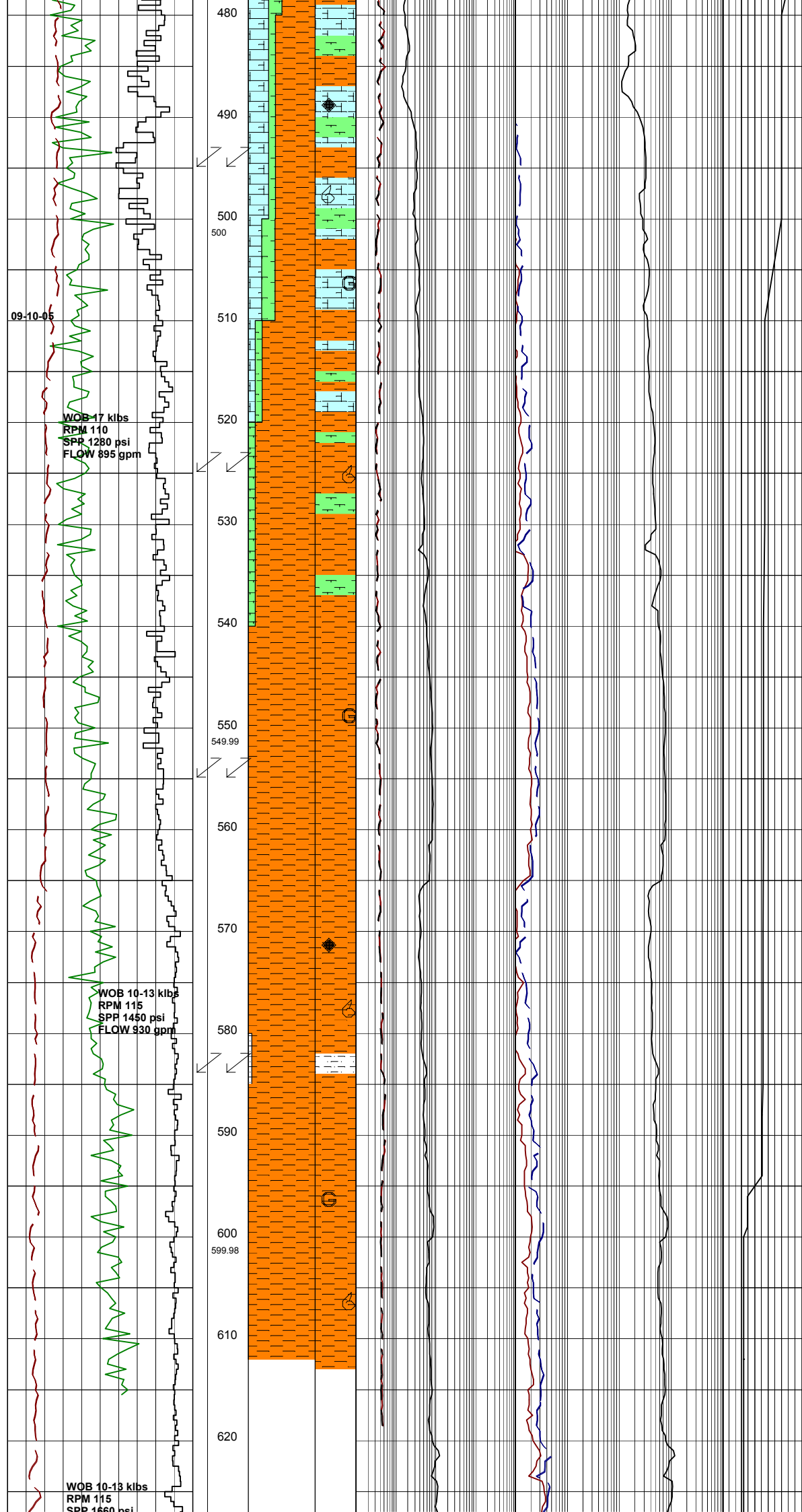
ARGILLACEOUS CALCILUTITE:pl gnsh
gy-wh,g/t CLCSLT i/p,tr foss frags,
v sft,disp,amorph.

MARL:v lt-med gy,v sft-sft,disp,
amorph.

Survey @ 440.82m: 0.26°,21.62Az

Survey @ 468.30m: 0.51°,355.61Az

MARL:v lt-lt med gy,v sft-sft,disp
i/p,amorph.



CALCULITE: arg, sft-sli frm, mass, v lt
-med gy & gm/gy, tr dk gy, arg mtx,
grad to CLCSLT i/p, tr foss frags,
tr fn dk grn dissem glauc & tr med-crs
nod glauc, tr fn pyr,

Survey @ 496.89m: 0.83°, 08.64Az

CLAYSTONE: v lt-med gy & gn gy, arg,
grad to CLCLUT and arg CLCSLT i/p,
tr foss frags, tr f & crs dk gn
dissem glauc, tr f pyr, sft-sli frm.

MARL: v lt-med gy, v sft-sft, grad
to arg CLCLUT i/p, tr foss frags
& forams, tr vf dk gn dissem glauc.

Survey @ 525.57m: 0.82°, 10.05Az

CLAYSTONE: lt gy-bn gy, tr lt gn/gy, sft,
calc mtx i/p, tr lt bn/yel foss frags,
tr f dk gn dissem glauc, tr f pyr.

MARL: vlt-lt med gy, v sft-sft, grad
to arg CLCLUT i/p, tr foss frags
& forams, clay mtx, disp.

Survey @ 554.34m: 0.83°, 16.56Az

CLAYSTONE: lt gy-bn gy, tr lt gn/gy, sft,
calc mtx i/p, com lt bn/yel foss frags,
com forams, rr f dk dissem glauc, tr
pyr, amorph.

CONTROL DRILLING FROM 566m

MARL (Tr): v lt-med gy, v sft-sft, grad
to arg CLCLUT i/p, tr foss frags
& forams, disp.

SILTSTONE: med-dk yel/bn, dk bn/gry-bn/
blk, det clay mtx, grad to arg SLTST,
loc aren grad to aren SLTST, tr f-
crs glauc, tr dk liths, qtz silt-vf qtz,
nil-vpr vis por, no fluor.

Survey @ 583.14m: 0.79°, 24.58Az

CLAYSTONE: lt gy-bn/gy, calc mtx, com
lt bn/yel foss frags, abdt f dk gn
dissem & nod glauc, tr f pyr, rr crs
nod pyr, sft-amorph.

Survey @ 611.86m: 0.73°, 26.07Az

FLOW 965 gpm

630



