



DRILLING DATA PLOT

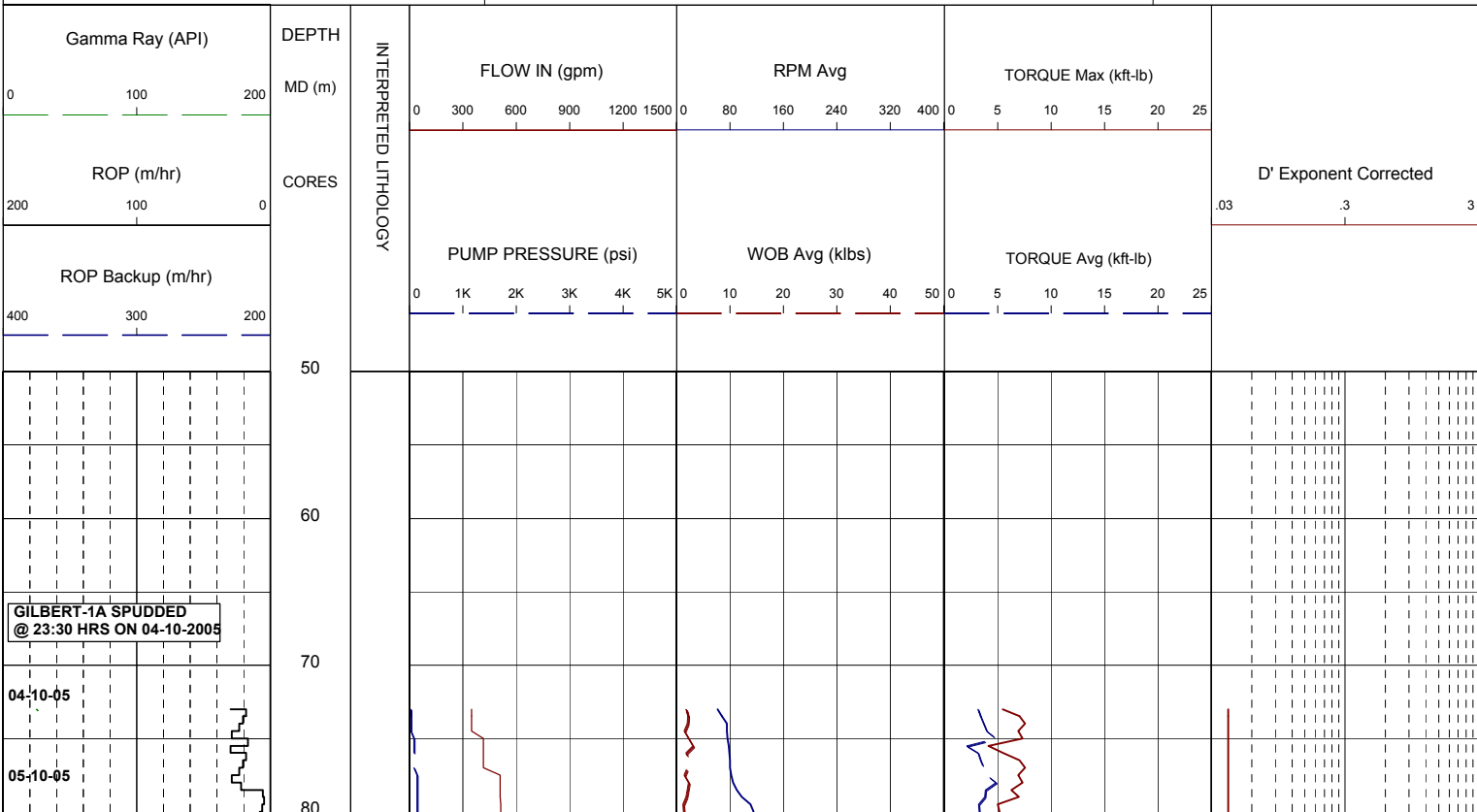
WELL : GILBERT 1A



FROM (m): 50 TO (m): 340 SCALE: 1/ 500

| | | | |
|--|--|---|---|
| Country : AUSTRALIA Region : VICTORIA Field : Permit : VIC/P-47 Well Type : VERTICAL EXPLORATION Rig Name : OCEAN PATRIOT | POSITION Latitude : 37°57'10.72"S Longitude : 148°22'25.90"E X (m) : 5,798,512.1 mN Y (m) : 620,701.1 mE RT-LAT (m) : 21.5 RT-Seabed (m) : 72.8 | CASING 508mm Shoe at (mMDRT) : 106m 340mm Shoe at (mMDRT) : 331m | Spud Date : 04-10-2005 Total Depth Date : Total Depth (mRT) : T.V.D. (mSSLAT) : Status : P & A |
|--|--|---|---|

| | | |
|---|-----------------------------|-------------------------------|
| ABBREVIATIONS MW MUD WEIGHT NB NEW BIT FV FUNNEL VISCOSITY RR RERUN BIT PV PLASTIC VISCOSITY CB CORE BIT YP YIELD POINT WOB WEIGHT ON BIT FC FILTER CAKE RPM REVS PER MINUTE SOL SOLIDS FLC FLOW CHECK WL FILTRATE CR CIRCULATE RETURNS SD SAND - % PR POOR RETURNS S SALINITY - PPM NR NO RETURNS RM MUD RESISTIVITY BG BACKGROUND GAS RMF MUD FILTRATE TG TRIP GAS C CARBIDE TEST STG SHORT TRIP GAS LAT LOGGED AFTER TRIP CG CONNECTION GAS DS DEVIATION SURVEY SG SWAB GAS SVG SURVEY GAS | LITHOLOGY LEGEND | ENGINEERING LEGEND |
|---|-----------------------------|-------------------------------|



BIT #1: Y11C
SIZE:660mm + 914mm H.O
JETS:2x24, 1x16
IN: 72.8m OUT:107m
RUN: 34m HRS: 3.5

508mm (20") Csg Shoe
set @ 106 mMDRT

06-18-05

BIT #2: REED T11
SIZE:445mm (17.5")
JETS:3x22, 1x16
IN: 107m OUT:336m
RUN:236m HRS:4.9

