



DRILLING DATA PLOT

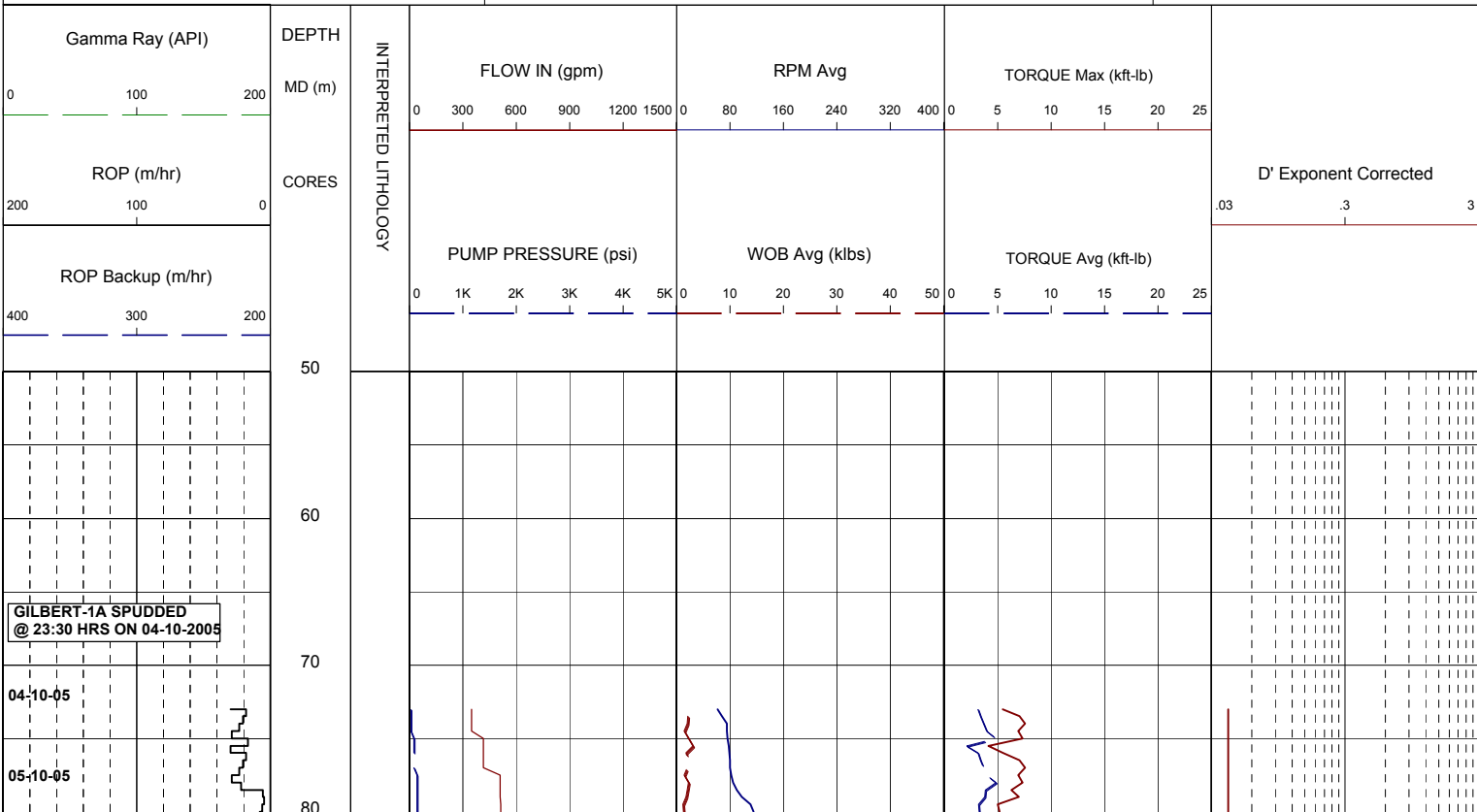
WELL : GILBERT 1A



FROM (m): 50 TO (m): 210 SCALE: 1/ 500

Country : AUSTRALIA	POSITION Latitude : 37°57'10.72"S Longitude : 148°22'25.90"E X (m) : 5,798,512.1 mN Y (m) : 620,701.1 mE RT-LAT (m) : 21.5 RT-Seabed (m) : 72.8	CASING 508mm Shoe at (mMDRT) : 106m 444mm Shoe at (mMDRT) :	Spud Date : 04-10-2005 Total Depth Date : Total Depth (mRT) : T.V.D. (mSSLAT) : Status : P & A
---------------------	--	--	--

<p>ABBREVIATIONS</p> <p>MW MUD WEIGHT NB NEW BIT FV FUNNEL VISCOSITY RR RERUN BIT PV PLASTIC VISCOSITY CB CORE BIT YP YIELD POINT WOB WEIGHT ON BIT FC FILTER CAKE RPM REVS PER MINUTE SOL SOLIDS FLC FLOW CHECK WL FILTRATE CR CIRCULATE RETURNS SD SAND - % PR POOR RETURNS S SALINITY - PPM NR NO RETURNS RM MUD RESISTIVITY BG BACKGROUND GAS RMF MUD FILTRATE TG TRIP GAS C CARBIDE TEST STG SHORT TRIP GAS LAT LOGGED AFTER TRIP CG CONNECTION GAS DS DEVIATION SURVEY SG SWAB GAS SVG SURVEY GAS</p>	<p>LITHOLOGY LEGEND</p> <p>Limestone Anhydrite Pyrite Med Sandstone Coal Glauconite Fine Sandstone Marl Mica Siltstone Dolomite Ferrous Claystone Carb. Siltstone Fossils Calcarenite Calc Claystone Calcareous Calcsiltite Lithic frag Dolomitic Calcilutite Chert</p>	<p>ENGINEERING LEGEND</p> <p>Deviation Survey Casing Shoe Wiper Trip SWC (rec) SWC (unrec) Core Bit Trip</p>
--	--	---



BIT #: Y11C
SIZE: 660mm + 914mm H.O
JETS: 2x24, 1x16
IN: 72.8m OUT: 107m
RUN: 34m HRS: 3.5

508mm (20") Csg Shoe
set @ 106 mMDRT

06-10-05

