

Company: Esso Australia Ltd

Well: FTA-A23

Field: Fortescue

Rig: Prod 4 / Crane

Country: Australia

Max-Trac  
4.5" Posiset Plug Setting Record  
13-Aug-2009

Rig:	Prod 4 / Crane		
Field:	Fortescue		
Location:	Gippsland		
Well:	FTA-A23		
Company:	Esso Australia Ltd		
LOCATION			
Gippsland	Elev.:	K.B.	39.60 m
Basin		G.L.	69.00 m
Bass Strait		D.F.	39.60 m
Permanent Datum:	M.S.L		
Log Measured From:	D.F	39.60 m above Perm. Datum	
Drilling Measured From:	D.F		
State: Victoria	Max. Well Deviation 93 deg	Longitude 148 16 36.62 E	Latitude 038 24 31.39 S

Logging Date	13-Aug-2009		
Run Number	1		
Depth Driller	3680 m		
Schlumberger Depth	3440 m		
Bottom Log Interval	3420 m		
Top Log Interval	3120 m		
Casing Fluid Type	Production Fluid		
Salinity			
Density	1.00654 g/cm3		
Fluid Level	550 m		
BIT/CASING/TUBING STRING			
Bit Size	8.500 in		
From	3145 m		
To	3686 m		
Casing/Tubing Size	4.500 in		
Weight	12.6 lbm/ft		
Grade	L-80		
From	18.7 m		
To	3680 m		
Maximum Recorded Temperatures	240 degC		
Logger On Bottom	13-Aug-2009	Time	19:40
Unit Number	889	Location	Prod 4 / Crane
Recorded By	S. Gilbert, O Darby, D Hewetson		
Witnessed By	D Broomfield, J Degiovanni		

Run 1			
Oil Density			
Water Salinity			
Gas Gravity			
Bo			
Bw			
1/Bg			
Bubble Point Pressure			
Bubble Point Temperature			
Solution GOR			
Maximum Deviation			
93 deg			
CEMENTING DATA			
Primary/Squeeze			
Primary			
Casing String No			
Lead Cement Type			
Volume			
Density			
Water Loss			
Additives			
Tail Cement Type			
Volume			
Density			
Water Loss			
Additives			
Expected Cement Top			
Logging Date			
Run Number			
Depth Driller			
Schlumberger Depth			
Bottom Log Interval			
Top Log Interval			
Casing Fluid Type			
Salinity			
Density			
Fluid Level			
BIT/CASING/TUBING STRING			
Bit Size			
From			
To			
Casing/Tubing Size			
Weight			
Grade			
From			
To			
Maximum Recorded Temperatures			
Logger On Bottom			
Unit Number			
Location			
Recorded By			
Witnessed By			

## DEPTH SUMMARY LISTING

Date Created: 30-JUL-2009 16:24:51

### Depth System Equipment

Depth Measuring Device		Tension Device		Logging Cable	
Type:	IDW-EB	Type:	PSDS/OSDS	Type:	2-32ZT
Serial Number:	6373	Serial Number:	325357	Serial Number:	207308
Calibration Date:	2-Dec-2008	Calibration Date:	20-Jul_2009	Length:	5100 M
Calibrator Serial Number:	30	Calibrator Serial Number:	1174	Conveyance Method: Wireline Rig Type: Offshore Fixed	
Calibration Cable Type:	2-23ZT	Number of Calibration Points:	10		
Wheel Correction 1:	-1	Calibration RMS:	10		
Wheel Correction 2:	-2	Calibration Peak Error:	19		

### Depth Control Parameters

Log Sequence:	Subsequent Log In the Well
Reference Log Name:	Solar Composite log
Reference Log Run Number:	Not provided

### Depth Control Remarks

1. All Schlumberger Depth procedures followed.
2. IDW used as primary depth reference. Z chart used as secondary
3. CMTD used as primary tension device
4. .
5.
6.

#### DISCLAIMER

THE USE OF AND RELIANCE UPON THIS RECORDED-DATA BY THE HEREIN NAMED COMPANY (AND ANY OF ITS AFFILIATES, PARTNERS, REPRESENTATIVES, AGENTS, CONSULTANTS AND EMPLOYEES) IS SUBJECT TO THE TERMS AND CONDITIONS AGREED UPON BETWEEN SCHLUMBERGER AND THE COMPANY, INCLUDING: (a) RESTRICTIONS ON USE OF THE RECORDED-DATA; (b) DISCLAIMERS AND WAIVERS OF WARRANTIES AND REPRESENTATIONS REGARDING COMPANY'S USE OF AND RELIANCE UPON THE RECORDED-DATA; AND (c) CUSTOMER'S FULL AND SOLE RESPONSIBILITY FOR ANY INFERENCE DRAWN OR DECISION MADE IN CONNECTION WITH THE USE OF THIS RECORDED-DATA.

OTHER SERVICES1
OS1: Max-Trac FSI

REMARKS: RUN NUMBER 1
Log Correlated to Solar Composite Log Provided with Wireline Program.
Objective:Set 4.5: Posiset plug @ 3420m MDKB to isolate the lower water producing zone's
NOTE:a 2 Sond Max-Trac tractor was ran in conjunction with the MPSU-BA for well access above 75 deg
Maximum Well Deviation = 93deg @ 3213m MDKB.
Top of Seal Set @ 3420m MDKB

CCL to Top of Seal = 6.7m
CCL Stop Depth = 3413.3m
SLB Crew: N Simmons , D Halsted ( Day's )
J Light , J Annear ( Nights )
All Depth are MDKB

RUN 1					
SERVICE ORDER #:		B297-00013			
PROGRAM VERSION:		17C0-154			
FLUID LEVEL:		550 m			
LOGGED INTERVAL	START	STOP	LOGGED INTERVAL	START	STOP

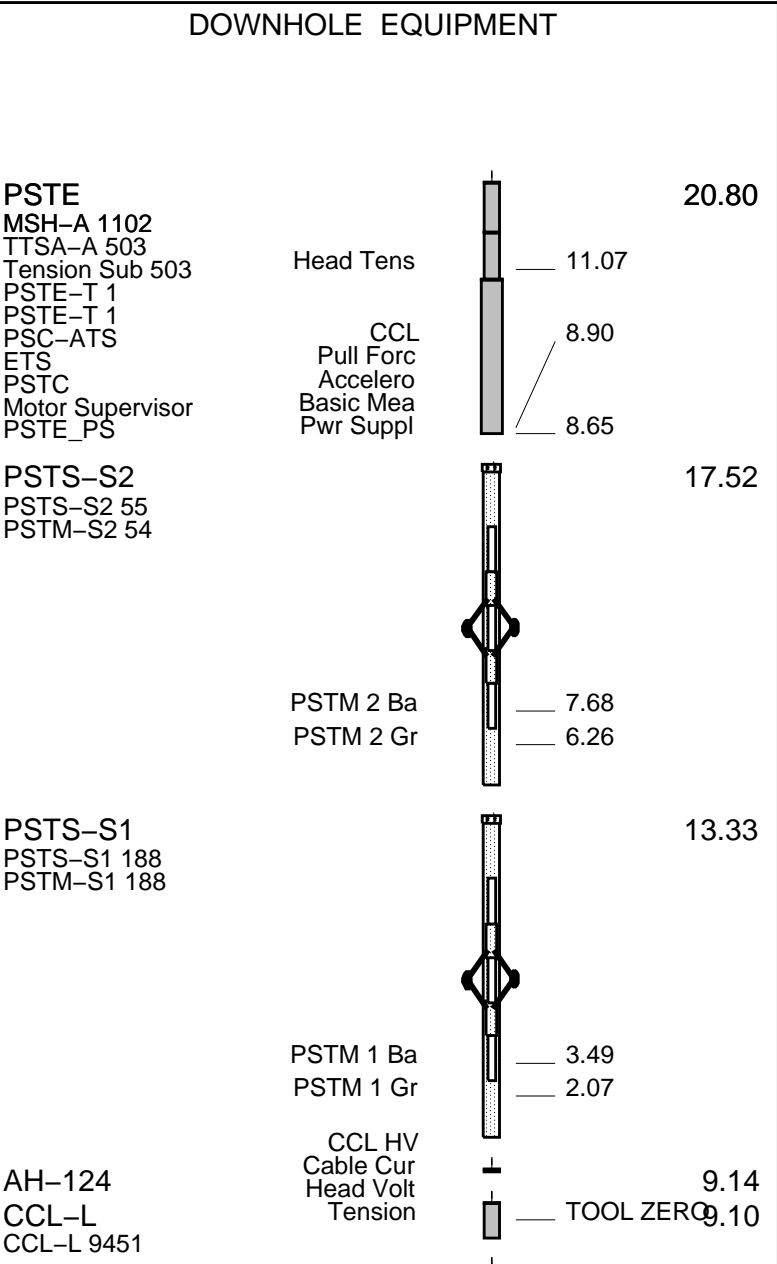
EQUIPMENT DESCRIPTION

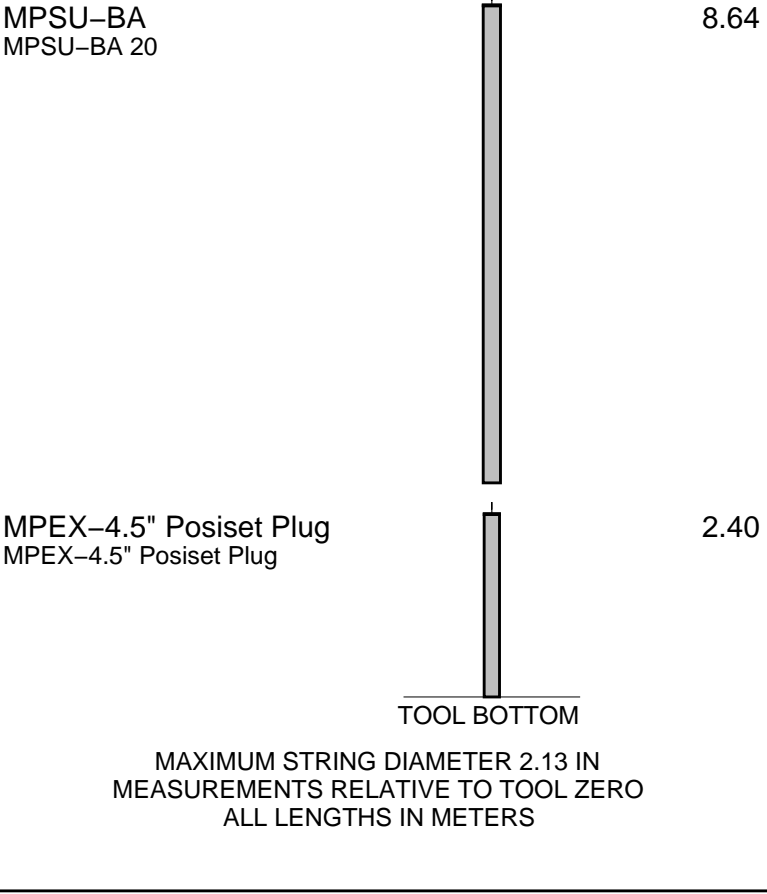
RUN 1

RUN 2

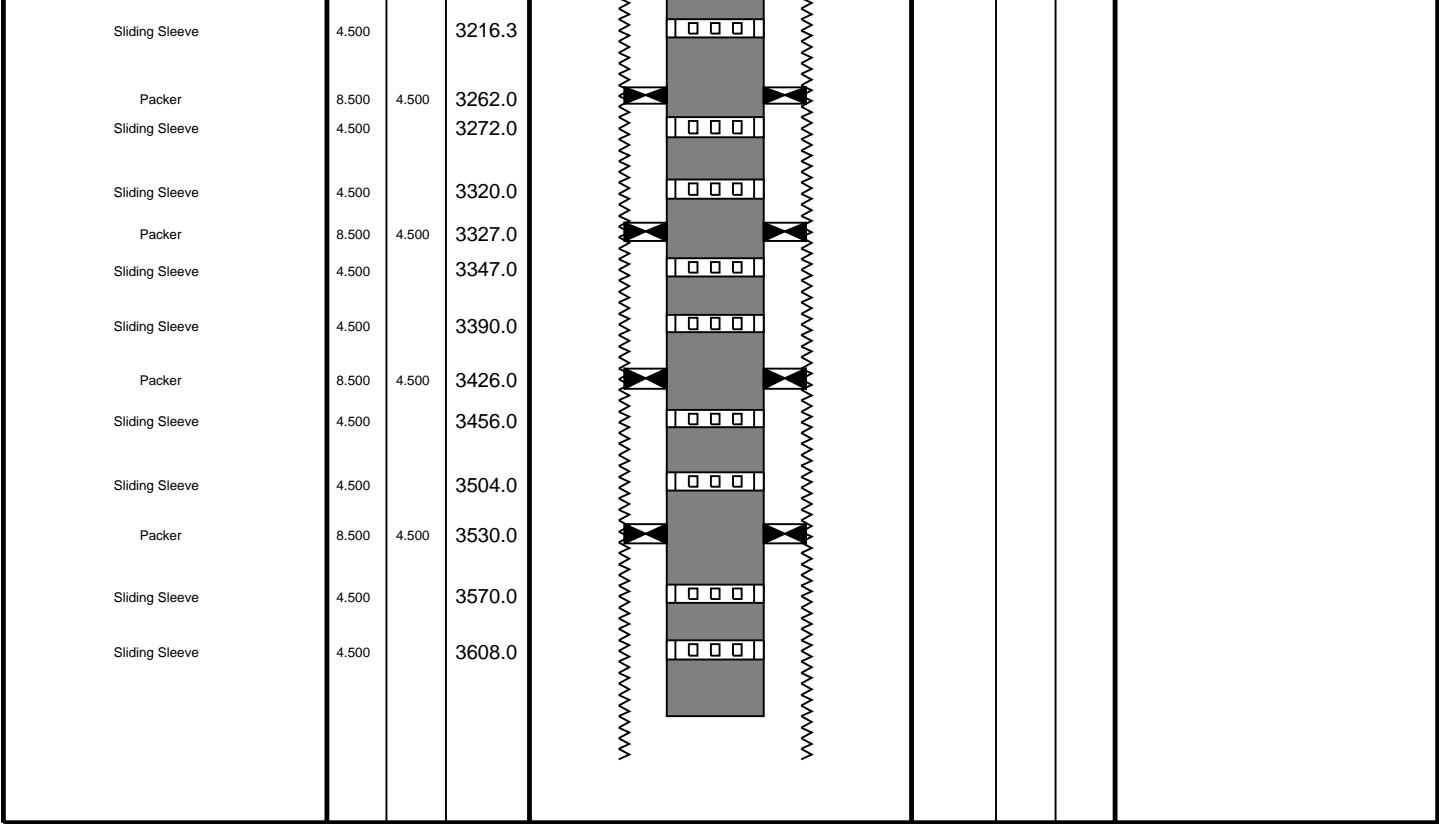
SURFACE EQUIPMENT

WITM (SHM)  
PSTD-B 45  
WITM-A 3576  
PSC\_16MHZ





Production String	(in)		(m)	Well Schematic	(m)	(in)		Casing String
	OD	ID	MD		MD	OD	ID	
Tubing Hanger	9.675	4.500	18.7		20.9	13.375	9.675	Casing String Liner Hanger
Tubing	4.500		18.7		19.8	13.375		
Shutin Valve	4.500		447.0					Casing Shoe Borehole Segment
Gas Lift Mandrel	4.500		986.0		897.0	13.375		
Gas Lift Mandrel	4.500		1588.0		904.0	12.250		
Gas Lift Mandrel	4.500		1993.0					
Nipple	4.500		2007.0					
Packer	9.675	4.500	2786.0					
Packer	9.675	4.500	2813.0					
Nipple	4.500		2813.5		3142.0	9.675		Casing Shoe Borehole Segment
Nipple	4.500		2838.0		3145.0	8.500		
Sliding Sleeve	4.500		3168.9					



Job Events Summay

MAXIS Field Log

Schlumberger Job Event Summary

Time	Elapsed Time	Depth (M)	File
------	--------------	-----------	------

Log Pass (up)	13-Aug-2009 18:49	000:05	3440.3 - 3413.3	MPBT_118LUP
Simulated Log	13-Aug-2009 18:55	000:16		MPBT_119LUP
Log Pass (up)	13-Aug-2009 19:15	000:06	3413.2 - 3349.9	CCL_120LUP

Output DLIS Files

DEFAULT CCL\_120LUP FN:119 PRODUCER 13-Aug-2009 19:15

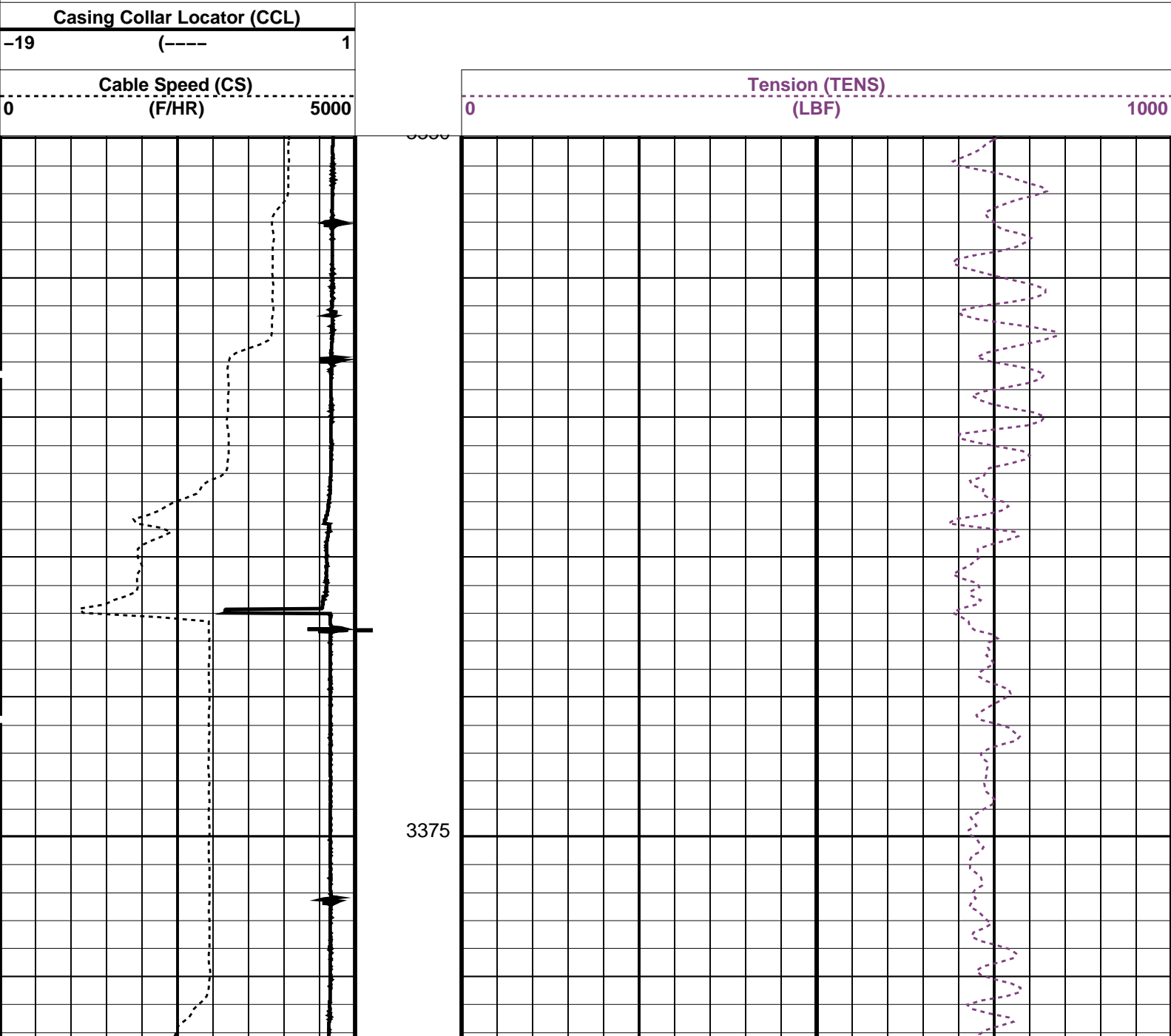
OP System Version: 17C0-154

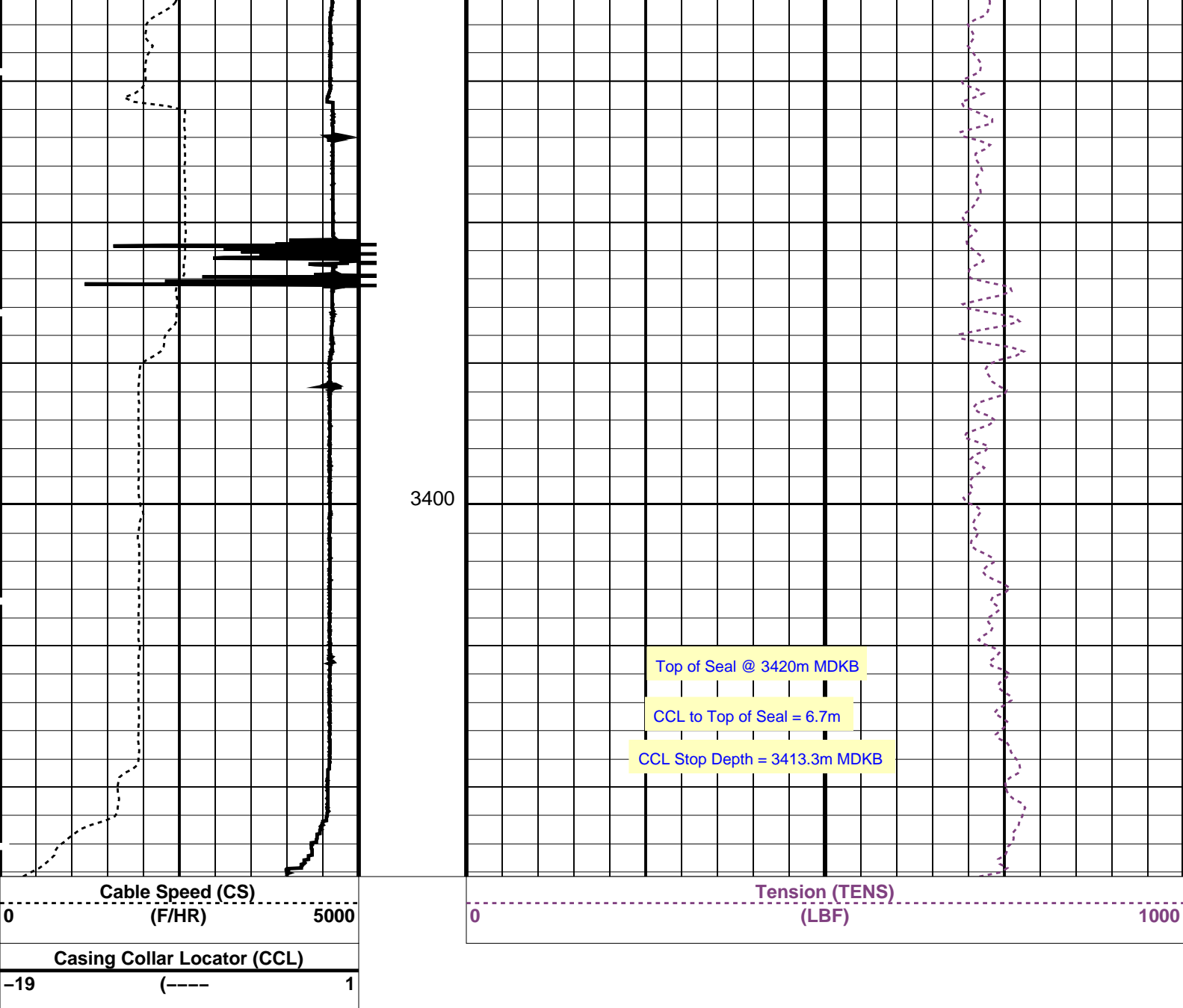
CCL-L 17C0-154

PIP SUMMARY

└─ Casing Collars

Time Mark Every 60 S





PIP SUMMARY		
Time Mark Every 60 S		
Casing Collars		
Parameters		
DLIS Name	Description	Value
CCLD	CCL-L: Casing Collar Locator	12 IN
CCLT	CCL reset delay	0.3 V
	CCL Detection Level	
Format: PERFO_1	Vertical Scale: 1:200	Graphics File Created: 13-Aug-2009 19:15
OP System Version: 17C0-154		
CCL-L	17C0-154	
Output DLIS Files		
DEFAULT	CCL_120LUP	FN:119 PRODUCER 13-Aug-2009 19:15

Company: Well:

## Output DLIS Files

DEFAULT MPBT\_119LUP FN:118 PRODUCER 13-Aug-2009 18:55

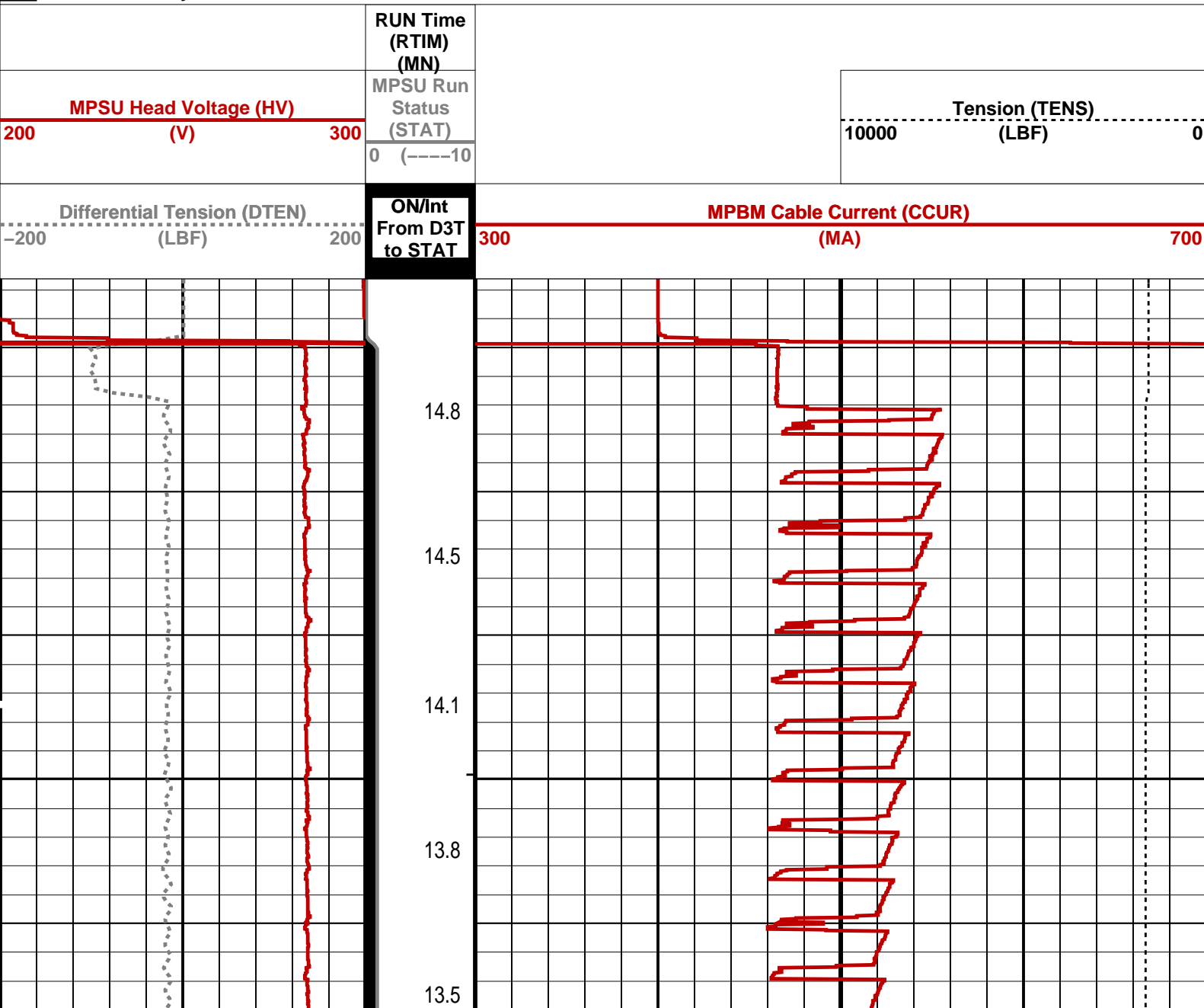
## OP System Version: 17C0-154

MPEX-BA 17C0-154 MPSU-BA 17C0-154  
CCL-L 17C0-154

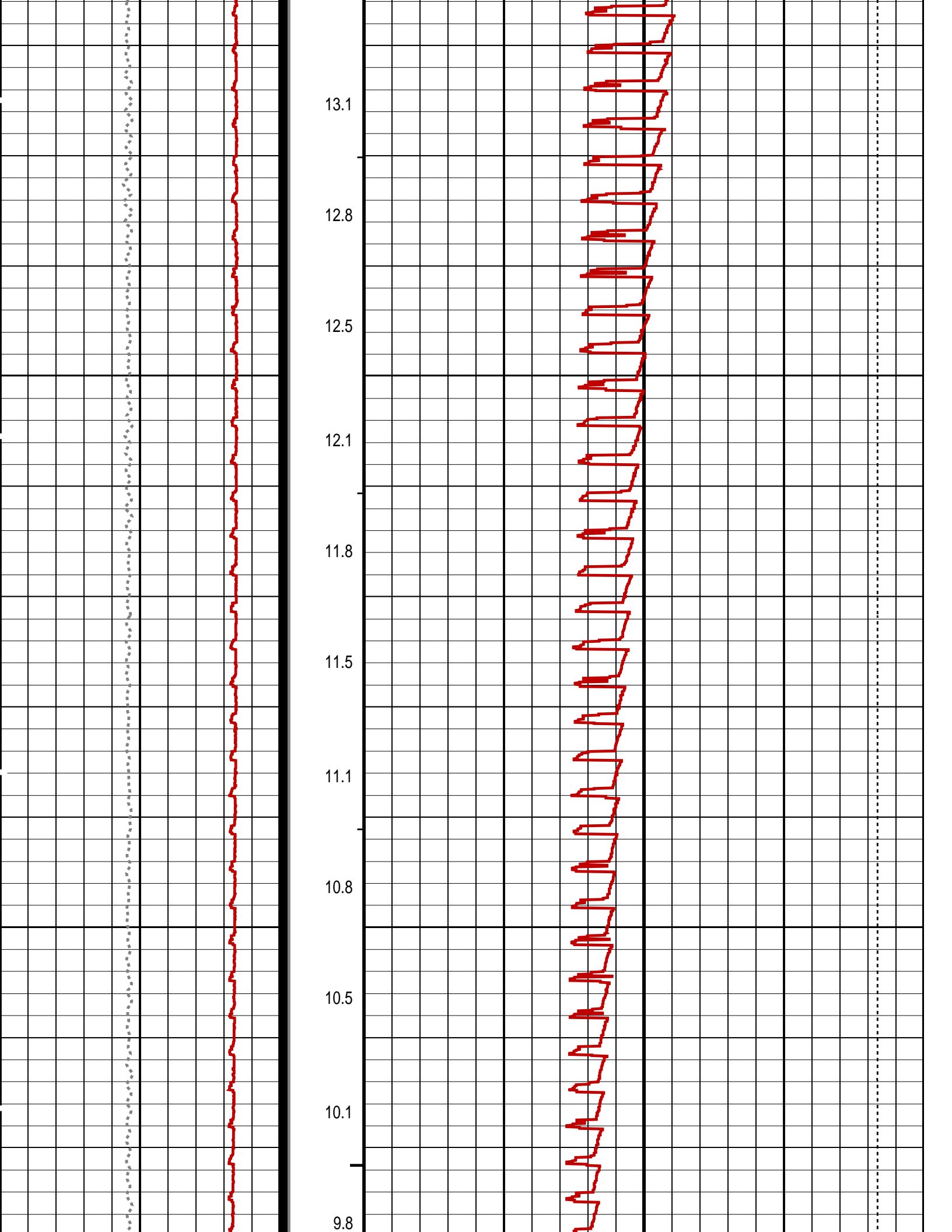
### PIP SUMMARY

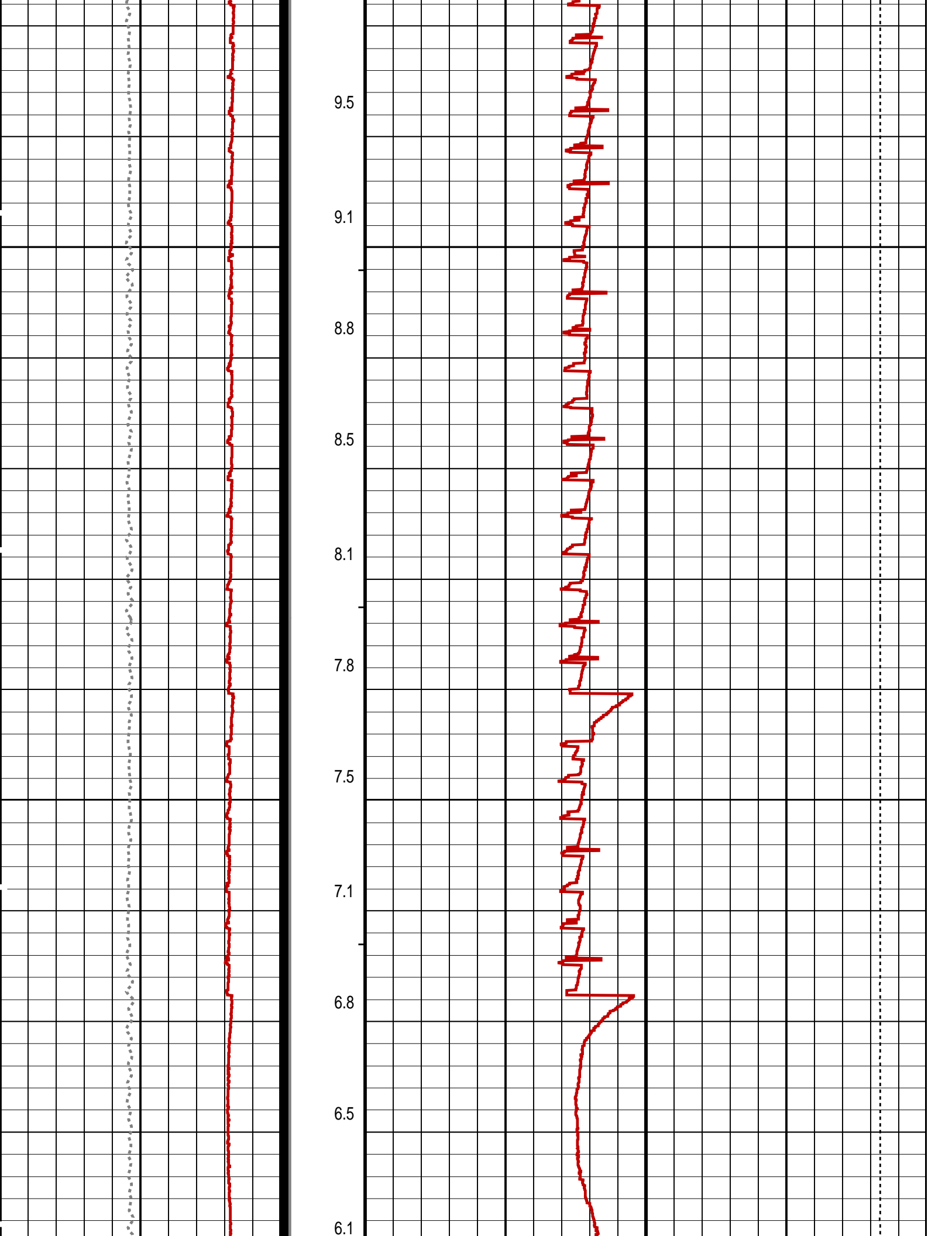
↓ MPSU Run Time Every 1 MN  
→ MPSU Run Time Every 10 MN

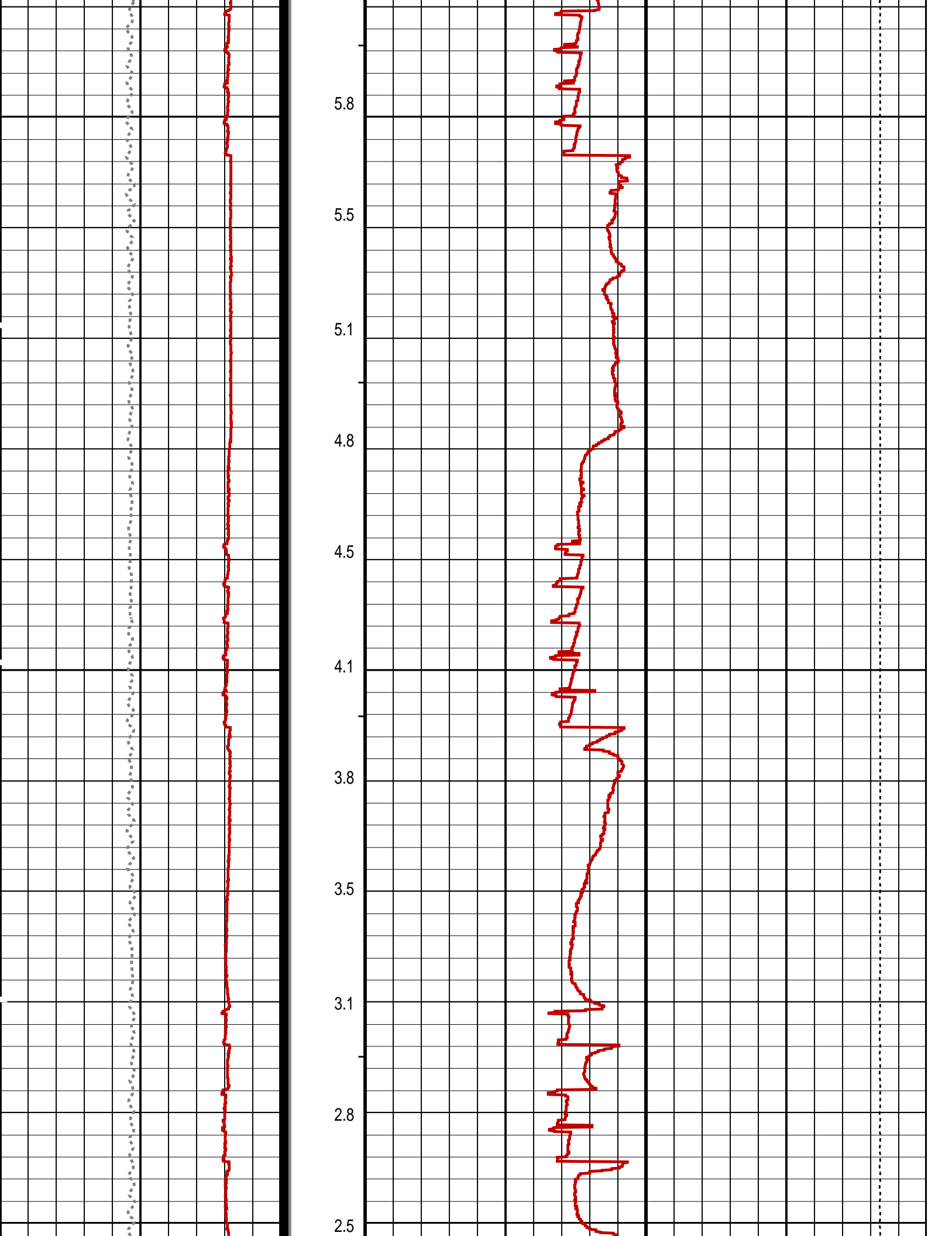
Time Mark Every 60 S

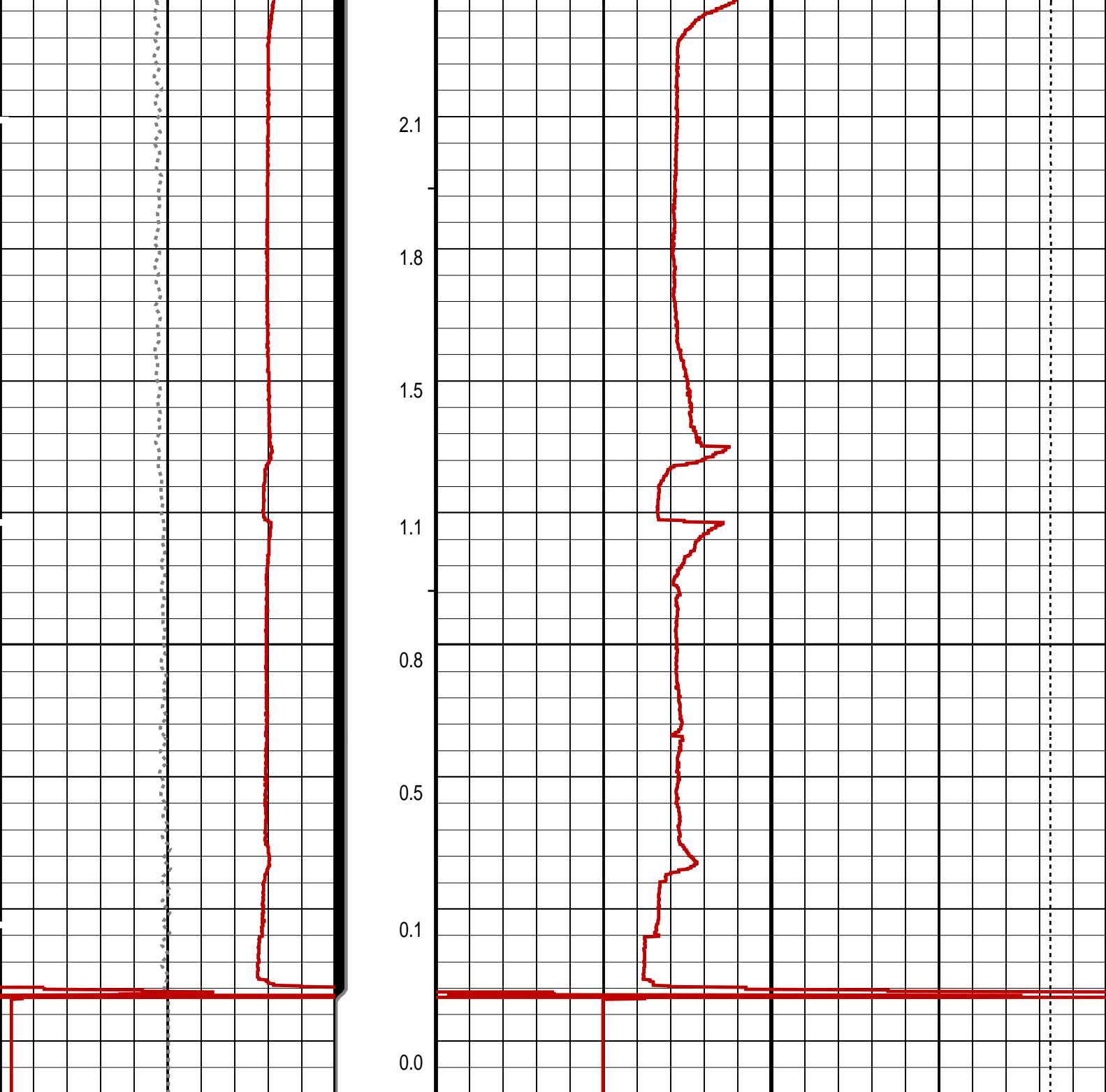













Differential Tension (DTEN) (LBF)	ON/Int From D3T to STAT	MPBM Cable Current (CCUR) (MA)
-200 200		300 700
MPSU Head Voltage (HV) (V)	MPSU Run Status (STAT)	Tension (TENS) (LBF)
200 300	0 (----10	10000 0
	RUN Time (RTIM) (MN)	

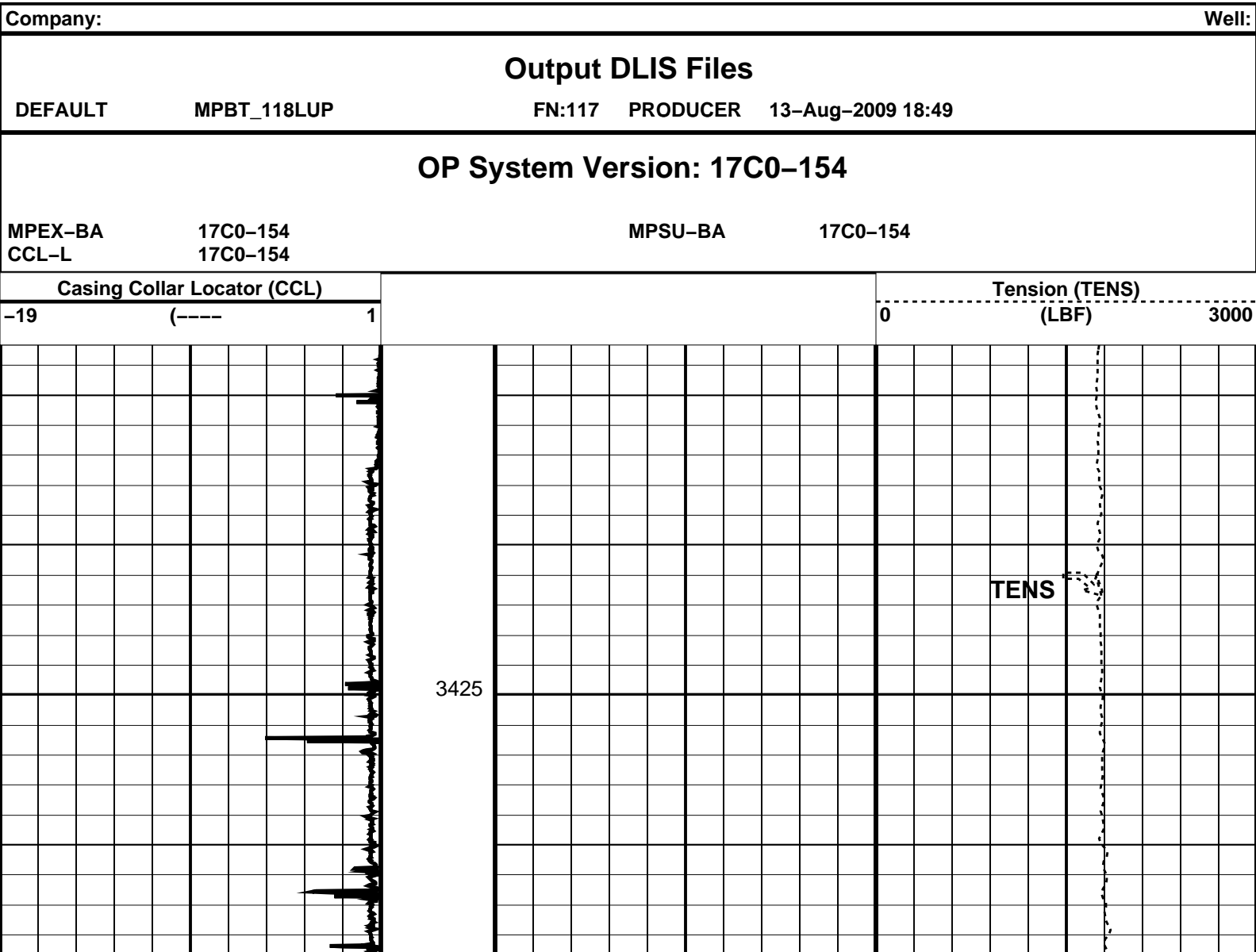
PIP SUMMARY

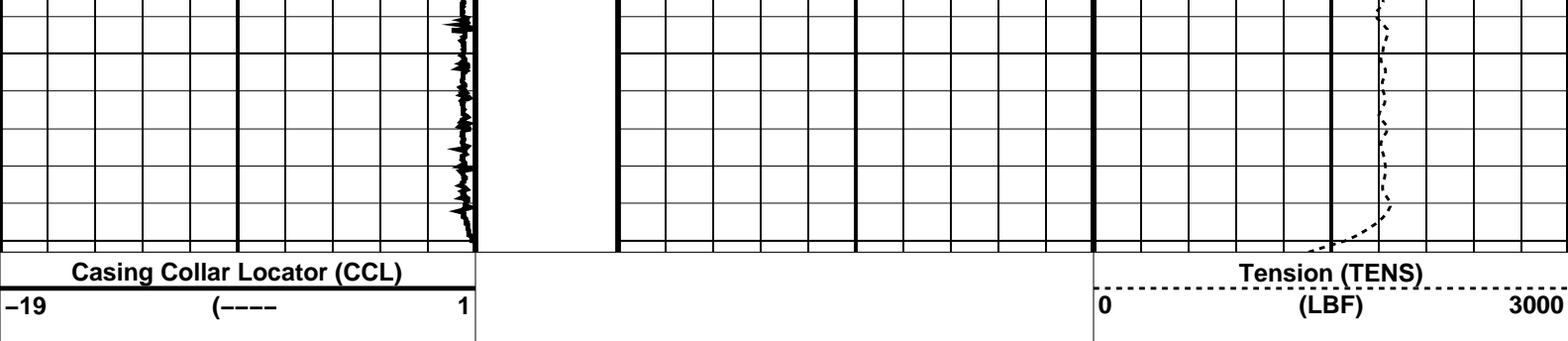
- ⊥ MPSU Run Time Every 1 MN
- MPSU Run Time Every 10 MN

Time Mark Every 60 S

Parameters

DLIS Name		Description		Value
MPSU-BA: MECHANICAL PLUGBACK SETTING UNIT				
IPUMP		Intensifier Pump		TRUE
Format: MPBT		Vertical Scale: 1:200	Graphics File Created: 13-Aug-2009 18:55	
OP System Version: 17C0-154				
MPEX-BA	17C0-154	MPSU-BA	17C0-154	
CCL-L	17C0-154			
Output DLIS Files				
DEFAULT	MPBT_119LUP	FN:118	PRODUCER	13-Aug-2009 18:55
<div><div></div><div><div>Plug Correlation Pass</div><div>MAXIS Field Log</div></div></div>				





Parameters		
DLIS Name	Description	Value
CCL-L: Casing Collar Locator		
CCLD	CCL reset delay	12 IN
CCLT	CCL Detection Level	0.3 V

Format: CORRELATION    Vertical Scale: 1:200    Graphics File Created: 13-Aug-2009 18:49

OP System Version: 17C0-154			
MPEX-BA	17C0-154	MPSU-BA	17C0-154
CCL-L	17C0-154		

Output DLIS Files			
DEFAULT	MPBT_118LUP	FN:117    PRODUCER	13-Aug-2009 18:49

Company:

Well:

Field:

Rig:

Country:

Esso Australia Ltd

FTA-A23

Fortescue

Prod 4 / Crane

Australia

Schlumberger

Max-Trac

4.5" Posiset Plug Setting Record

13-Aug-2009