



Company: Esso Australia Pty/Ltd.

Well: A-4B

Field: Flounder

Rig: Prod 4 / Crane Country: Australia

7 5/8" Possiset Plug  
Setting Record  
Cement Dump Bailer

Rig: Prod 4 / Crane

Field: Flounder

Location: Gippsland

Well: A-4B

Company: Esso Australia Pty/Ltd.

LOCATION	
Gippsland	Elev.: K.B. 34 m
Basin	G.L. -94 m
Bass Strait	D.F. 34 m
Permanent Datum:	M.S.L. _____
Log Measured From:	D.F. _____
Drilling Measured From:	D.F. _____
State: Victoria	Max. Well Deviation 32 deg
	Longitude 148°06'15.1"E
	Latitude 038°18'45.2"S

Logging Date	15-Feb-2007		
Run Number	1		
Depth Driller	2684 m		
Schlumberger Depth	2673.5 m		
Bottom Log Interval	2673.5 m		
Top Log Interval	2600 m		
Casing Fluid Type	Production Fluids		
Salinity			
Density			
Fluid Level	0 m		
BIT/CASING/TUBING STRING			
Bit Size	9.875 in		
From			
To			
Casing/Tubing Size	7.625 in		
Weight	29.7 lbm/ft		
Grade	L-80		
From	19.8 m		
To	2782 m		
Maximum Recorded Temperatures	232 degF		
Logger On Bottom	15-Feb-2007		21:42
Unit Number	889	Prod4	
Recorded By	G Wright , S Gilbert		
Witnessed By	B White , B Robinson		

	Oil Density	Run 1
	Water Salinity	
	Gas Gravity	
	Bo	
	Bw	
	1/Bg	
	Bubble Point Pressure	
	Bubble Point Temperature	
	Solution GOR	
	Maximum Deviation	32 deg
	CEMENTING DATA	
	Primary/Squeeze	Primary
	Casing String No	
	Lead Cement Type	
	Volume	
	Density	
	Water Loss	
	Additives	
	Tail Cement Type	
	Volume	
	Density	
	Water Loss	
	Additives	
	Expected Cement Top	
	Logging Date	
	Run Number	
	Depth Driller	
	Schlumberger Depth	
	Bottom Log Interval	
	Top Log Interval	
	Casing Fluid Type	
	Salinity	
	Density	
	Fluid Level	
	BIT/CASING/TUBING STRING	
	Bit Size	
	From	
	To	
	Casing/Tubing Size	
	Weight	
	Grade	
	From	
	To	
	Maximum Recorded Temperatures	
	Logger On Bottom	
	Unit Number	
	Recorded By	
	Witnessed By	

## DEPTH SUMMARY LISTING

Date Created: 6-FEB-2007 16:26:31

### Depth System Equipment

Depth Measuring Device	Tension Device	Logging Cable
Type: IDW-EB Serial Number: 6373 Calibration Date: 5-JUL-2006 Calibrator Serial Number: 9 Calibration Cable Type: 2-32ZT Wheel Correction 1: -2 Wheel Correction 2: -4	Type: CMTD-B/A Serial Number: 325357 Calibration Date: 6-FEB-2007 Calibrator Serial Number: 1174 Calibration Gain: 0.90 Calibration Offset: 197.00	Type: 2-32ZT Serial Number: 24426 Length: 6600.14 M Conveyance Method: Wireline Rig Type: Offshore_Mobile

### Depth Control Parameters

Log Sequence:	Subsequent Log In the Well
Reference Log Name:	Schlumberger MWPT Perforation Record
Reference Log Run Number:	
Reference Log Date:	08-Feb-2007

### Depth Control Remarks

1. IDW used as primary depth control
2. Z chart used as secondary depth control
3.
4.
5.
6.

#### DISCLAIMER











THE USE OF AND RELIANCE UPON THIS RECORDED-DATA BY THE HEREIN NAMED COMPANY (AND ANY OF ITS AFFILIATES, PARTNERS, REPRESENTATIVES, AGENTS, CONSULTANTS AND EMPLOYEES) IS SUBJECT TO THE TERMS AND CONDITIONS AGREED UPON BETWEEN SCHLUMBERGER AND THE COMPANY, INCLUDING: (a) RESTRICTIONS ON USE OF THE RECORDED-DATA; (b) DISCLAIMERS AND WAIVERS OF WARRANTIES AND REPRESENTATIONS REGARDING COMPANY'S USE OF AND RELIANCE UPON THE RECORDED-DATA; AND (c) CUSTOMER'S FULL AND SOLE RESPONSIBILITY FOR ANY INFERENCE DRAWN OR DECISION MADE IN CONNECTION WITH THE USE OF THIS RECORDED-DATA.

OTHER SERVICES1
OS1: 2 1/8" Enerjet
OS2: Perforation
OS3:
OS4:
OS5:
REMARKS: RUN NUMBER 1
Log Correlated to Schlumberger MWPT Perforation Record dated 8-Feb-2007
Objectives: Set 7 5/8" Possiset Plug between existing perforations @2673.5m MDKB
them Dump approx 1m of Cement on top .
Maximum Well Deviation : 32 deg
CCL to Top of Seal : 7.2m.
CCL Stop Depth : 2666.3m MDKB
SBHT: 232 degf

Crew : J Annear, B Flynn ,P Lawrence,L Dooley

RUN 1					
SERVICE ORDER #:		AUSL07336260			
PROGRAM VERSION:		14C0-302			
FLUID LEVEL:		0 m			
LOGGED INTERVAL	START	STOP	LOGGED INTERVAL	START	STOP

EQUIPMENT DESCRIPTION

RUN 1			RUN 2		
SURFACE EQUIPMENT			SURFACE EQUIPMENT		
MPBM			WITM (SHM)		
DOWNHOLE EQUIPMENT			DOWNHOLE EQUIPMENT		
SWBS-B 761		12.18	SWBS-B 761		15.37
SWBS-B 762		11.49	SWBS-B 762		14.68
SWHS-A 753		10.81	SWHS-A 753		14.00
CCL-L 4191	<div>CCL Tachomete Cable Cur Head Volt Tension</div> 	10.47	CCL-L 4191	<div>Tension CCL</div> 	13.67
CCL-L 4191		TOOL ZERO	CCL-L 4191		TOOL ZERO
MPSU-CA 1011		10.02	SHM_GUN		13.21
MPSU-CA 1011			HPI Dump Bailer		

MPEX-CA 1  
MPEX-CA 1

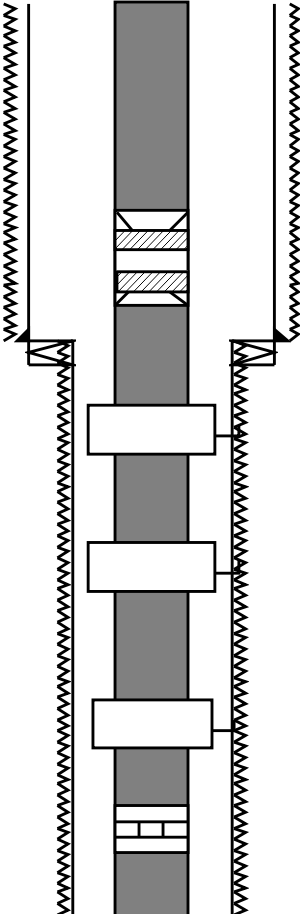
3.61

TOOL BOTTOM

MAXIMUM STRING DIAMETER 2.63 IN  
MEASUREMENTS RELATIVE TO TOOL ZERO  
ALL LENGTHS IN METERS

TOOL BOTTOM

MAXIMUM STRING DIAMETER 2.13 IN  
MEASUREMENTS RELATIVE TO TOOL ZERO  
ALL LENGTHS IN METERS

Production String	(in)		(m)	Well Schematic	(m)	(in)		Casing String
	OD	ID	MD		MD	OD	ID	
Tubing	3.500		19.4		19.8	13.625 11.750		Borehole Segment Casing String
SSSV			453.5		587.2 587.2 587.2	13.625 8.500 11.750		Borehole Segment Bottom Borehole Segment Liner Hanger
Gas Lift Mandrel	5.968	2.920	627.1			7.625	7.625	Casing String, 44.3 kg/m, L-80
Gas Lift Mandrel	5.968	2.920	818.1					
Gas Lift Mandrel	5.680	2.920	1000.0					
Nipple	3.500	2.750	1016.1					



Output DLIS Files

DEFAULT      PERFO\_051LUP      FN:50    PRODUCER    15-Feb-2007 21:26    2661.7 M      2591.3 M

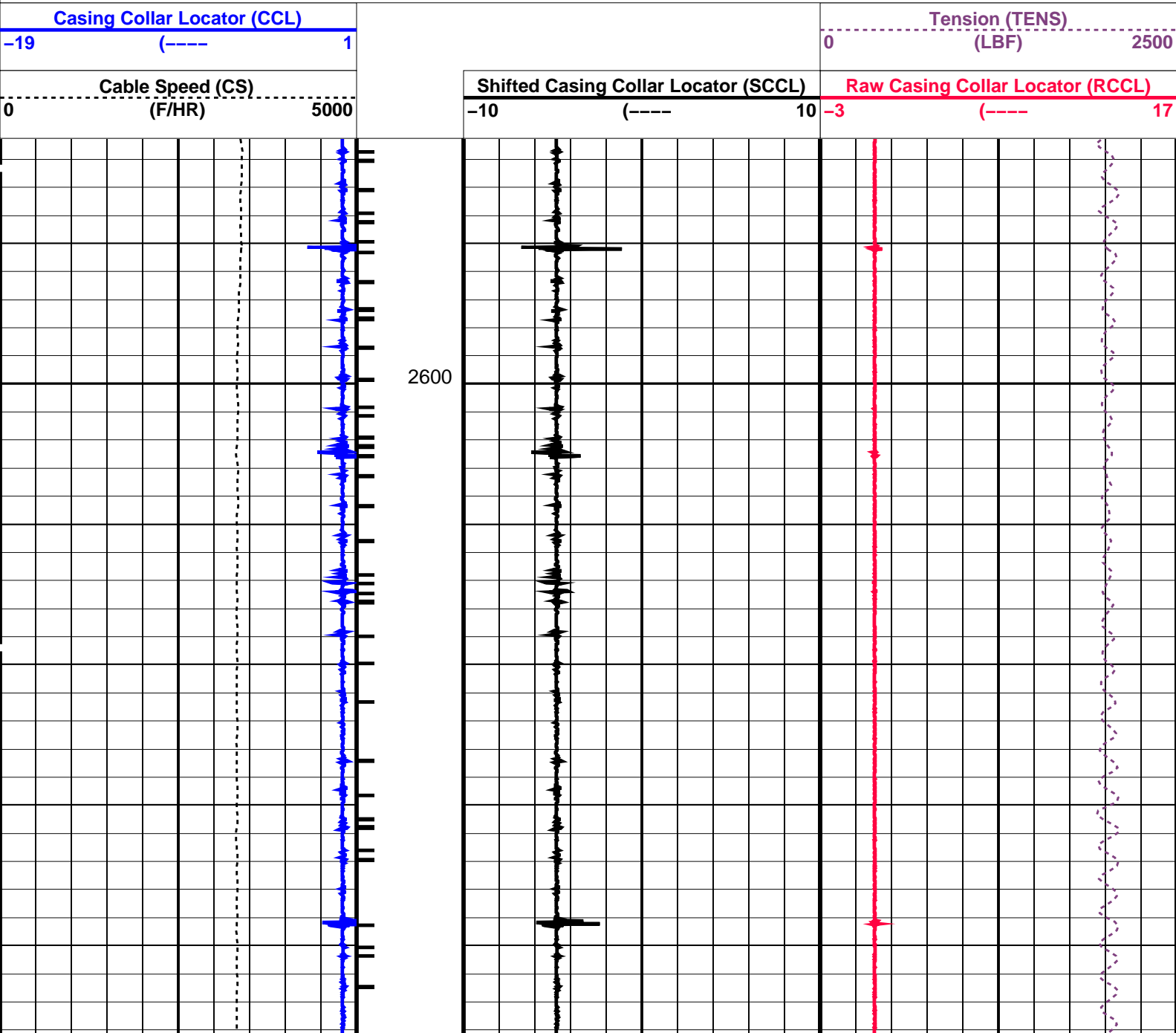
OP System Version: 14C0-302  
MCM

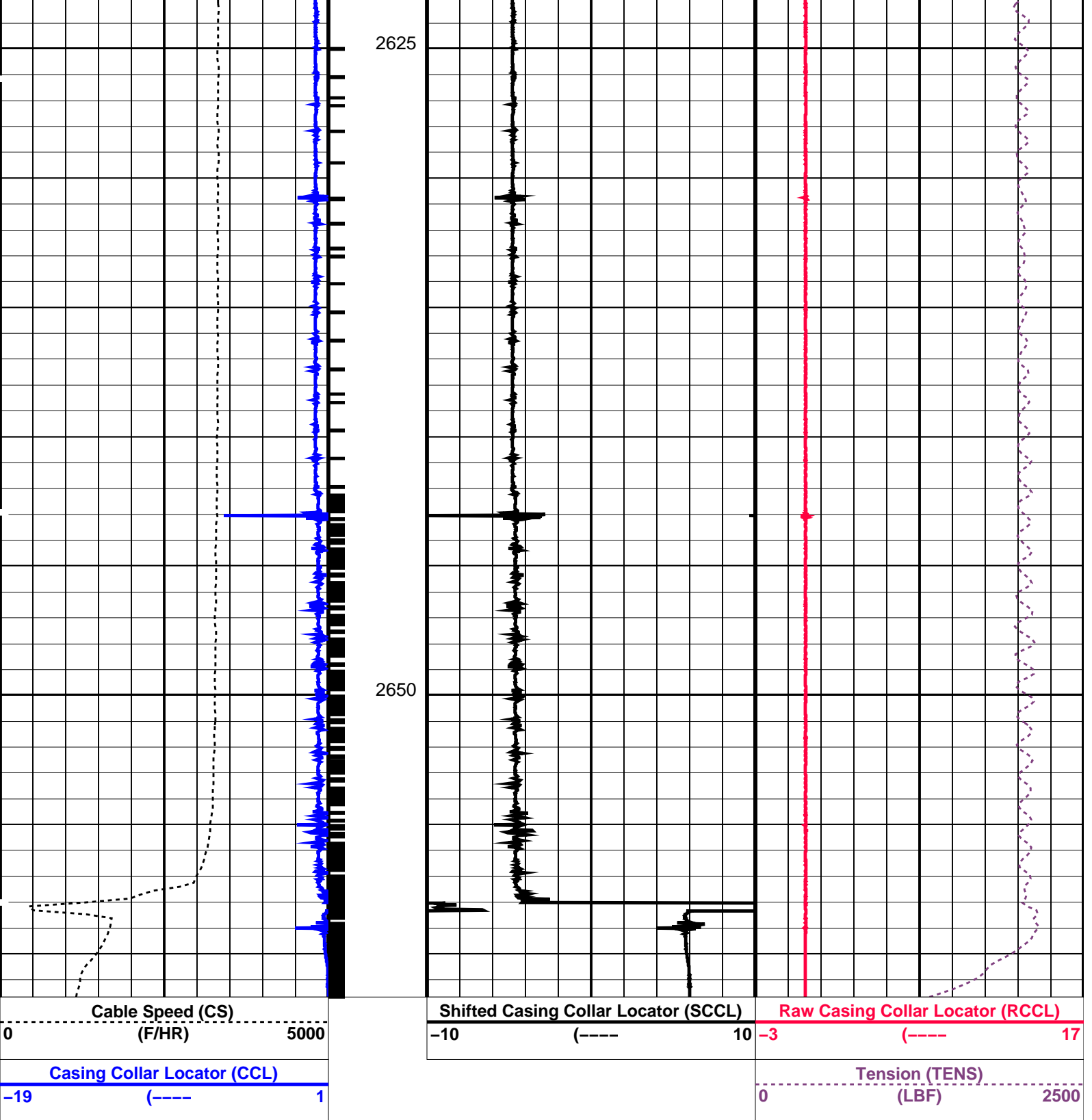
SHM\_GUN      SRC-3220-WPP-AAP      CCL-L      14C0-302

PIP SUMMARY

└─ Casing Collars

 Time Mark Every 60 S





PIP SUMMARY

← Casing Collars

Time Mark Every 60 S

Parameters

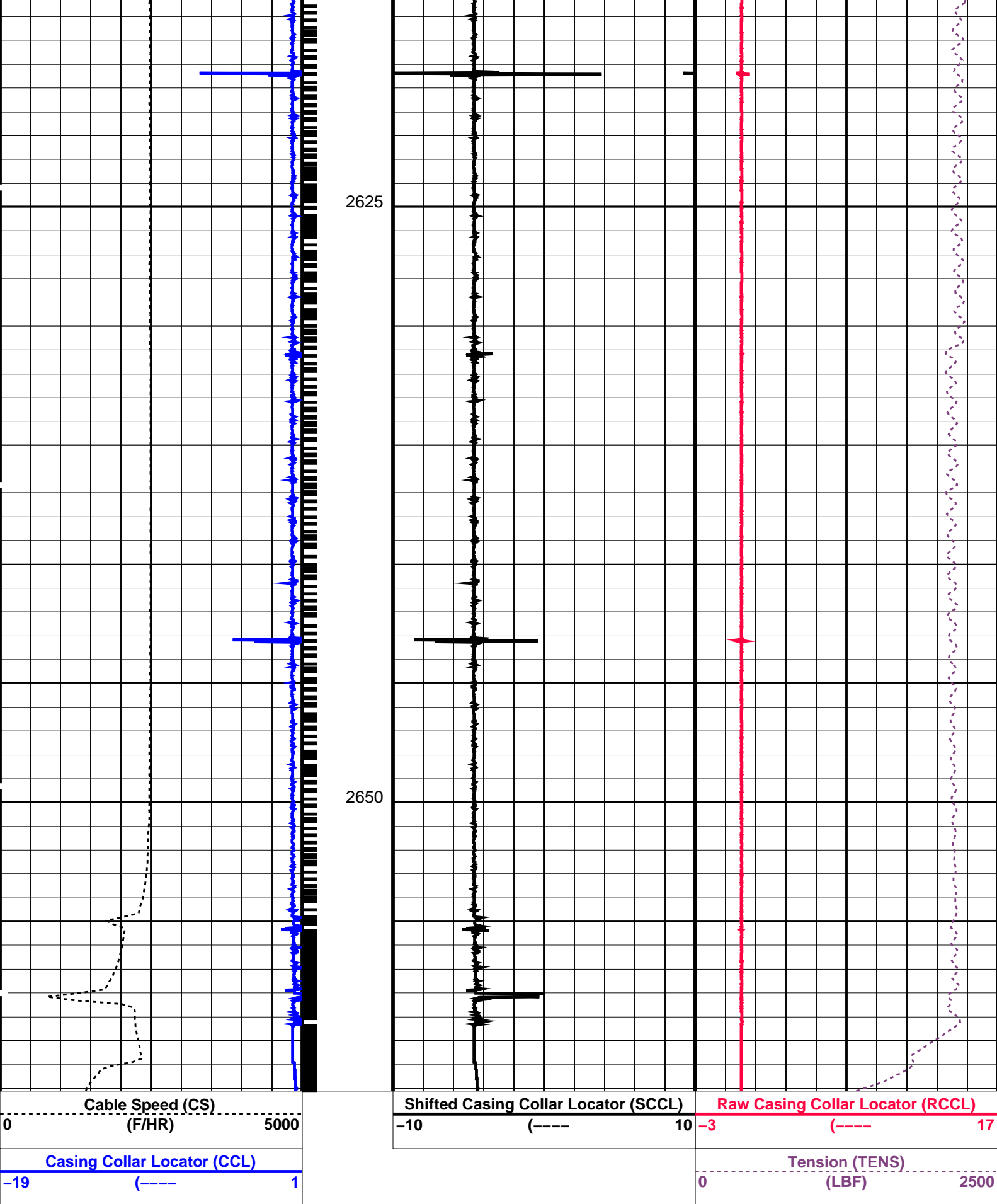
DLIS Name	Description	Value
CCLD	CCL-L: Casing Collar Locator	12 IN
CCLT	CCL reset delay	0.3 V
	CCL Detection Level	

Format: PERFO Vertical Scale: 1:200

Graphics File Created: 15-Feb-2007 21:26







### PIP SUMMARY

### Parameters

DLIS Name	Description	Value
CCL-L: Casing Collar Locator		
CCLD	CCL reset delay	12 IN
CCLT	CCL Detection Level	0.3 V

Format: PERFO

Vertical Scale: 1:200

Graphics File Created: 15-Feb-2007 19:40

OP System Version: 14C0-302			
MCM			
SHM_GUN	SRC-3220-WPP-AAP5	CCL-L	14C0-302

Output DLIS Files			
DEFAULT	PERFO_047LUP	FN:46	PRODUCER 15-Feb-2007 19:40

Schlumberger

Log Away from Plug Setting

MAXIS Field Log

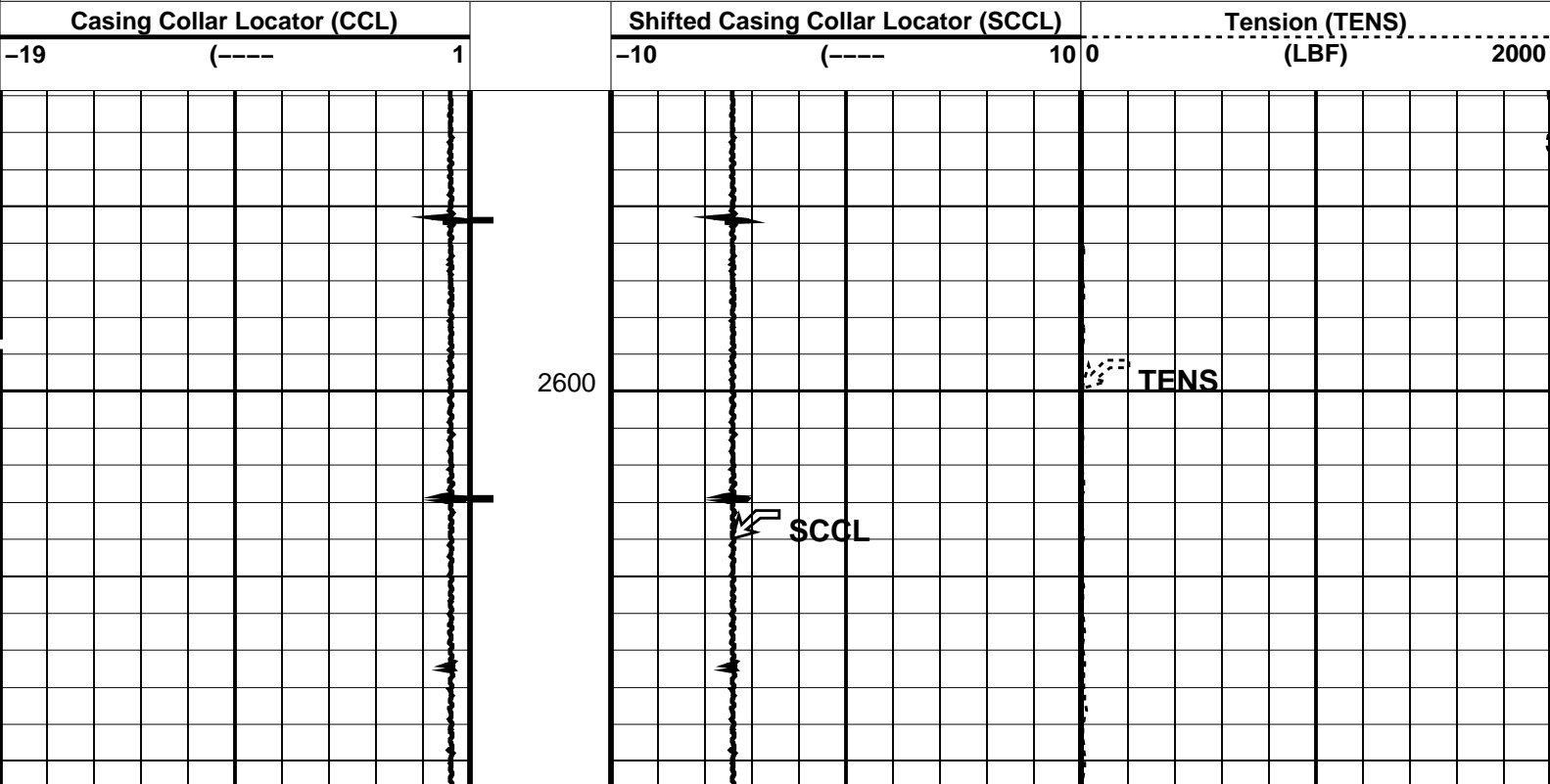
Output DLIS Files			
DEFAULT	MPBT_040LUP	FN:39	PRODUCER 15-Feb-2007 17:16 2666.2 M 2591.9 M

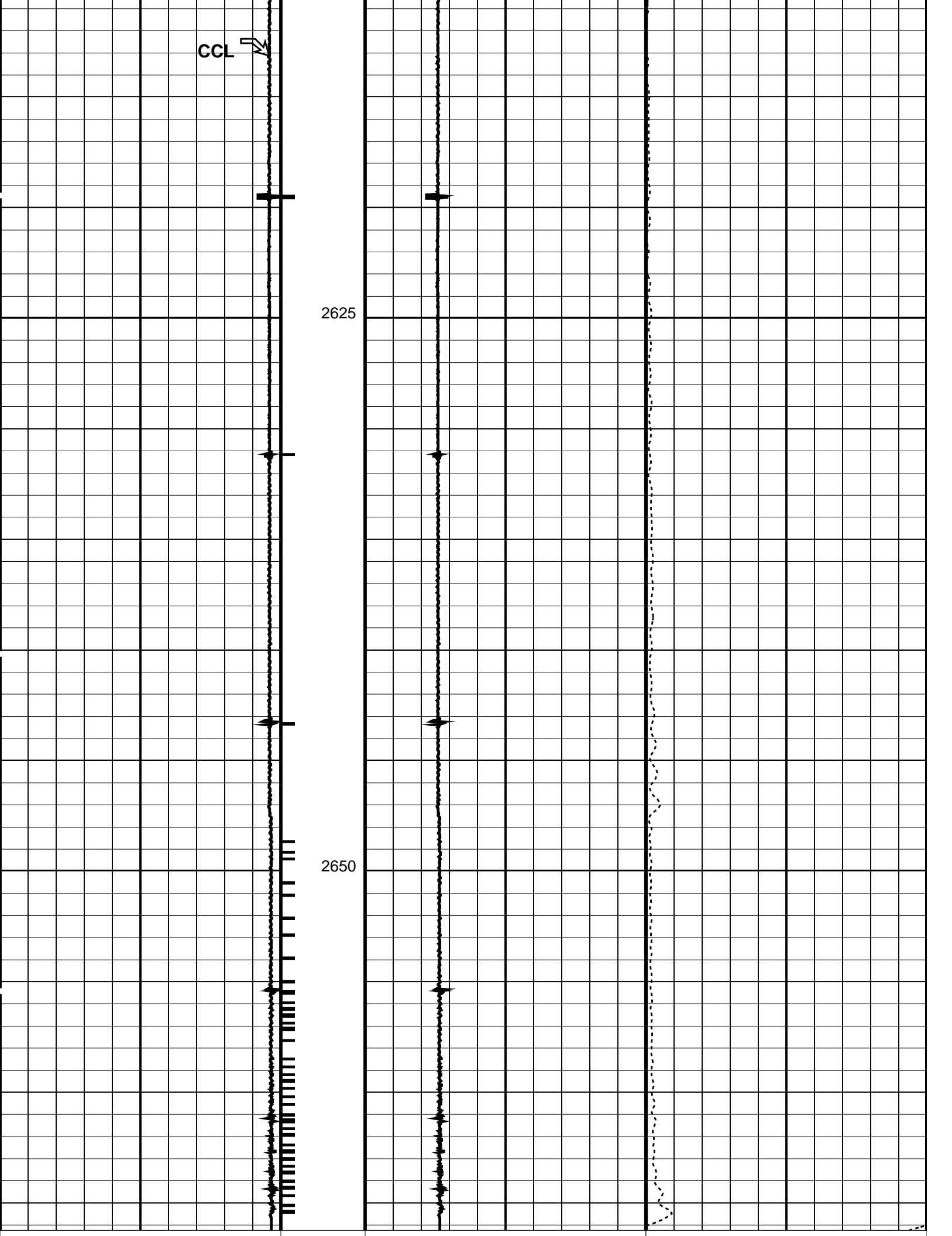
OP System Version: 14C0-302			
MCM			
MPEX-BA	SRC-3220-WPP-AAP5	MPSU-CA	SRC-3220-WPP-AAP5
CCL-L	14C0-302		

PIP SUMMARY

Time Mark Every 60 S

Casing Collars





Casing Collar Locator (CCL)	Shifted Casing Collar Locator (SCCL)	Tension (TENS)
-19 (----) 1	-10 (----) 10 0	(LBF) 2000

PIP SUMMARY		
<div> <div></div> <div>Casing Collars</div> </div>		
Time Mark Every 60 S		
Parameters		
DLIS Name	Description	Value
CCLD	CCL-L: Casing Collar Locator	12 IN
CCLT	CCL reset delay	0.3 V
	CCL Detection Level	
Format: PERFO	Vertical Scale: 1:200	Graphics File Created: 15-Feb-2007 17:16
OP System Version: 14C0-302		
MCM		
MPEX-BA	SRC-3220-WPP-AAP\$	MPSU-CA
CCL-L	14C0-302	SRC-3220-WPP-AAP\$
Output DLIS Files		
DEFAULT	MPBT_040LUP	FN:39 PRODUCER 15-Feb-2007 17:16

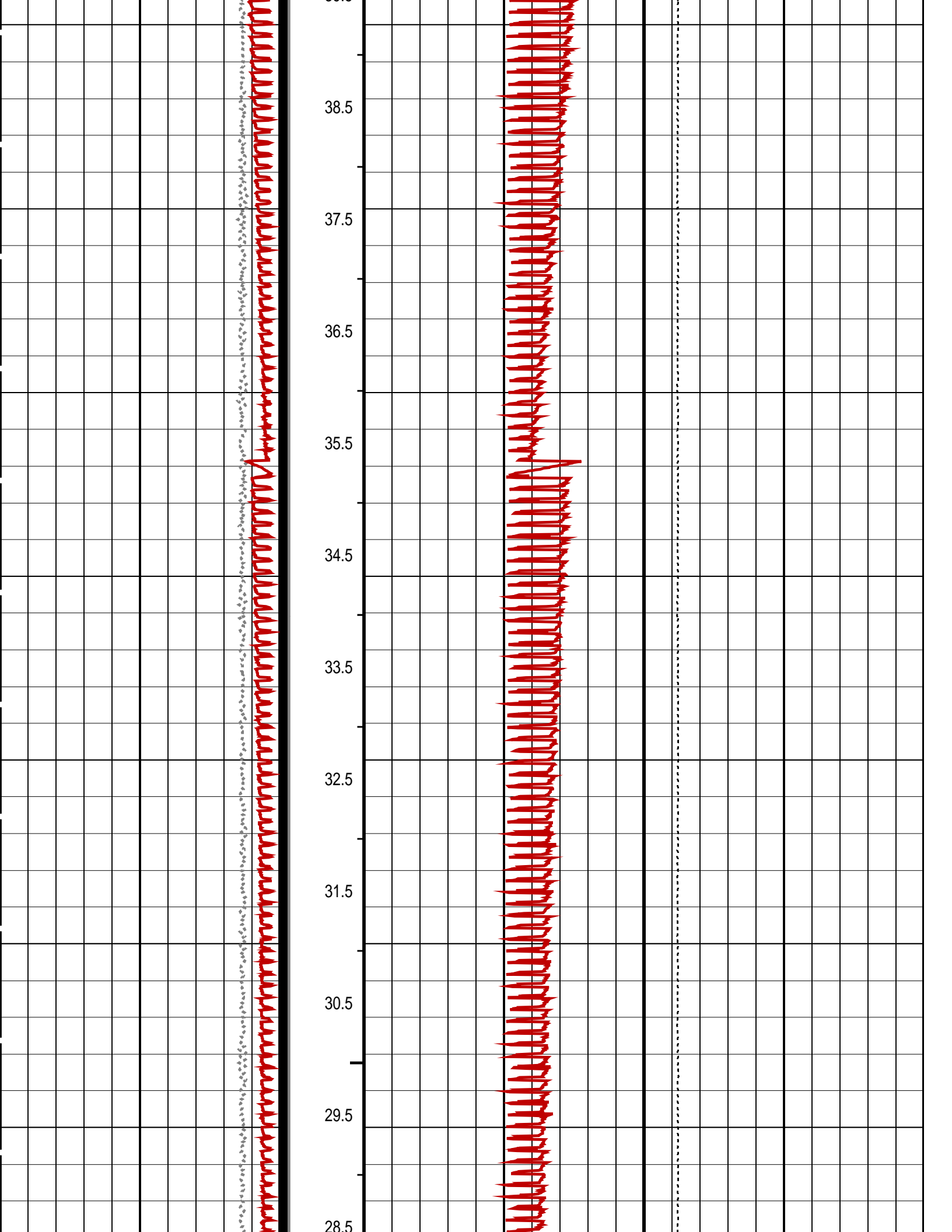
Schlumberger

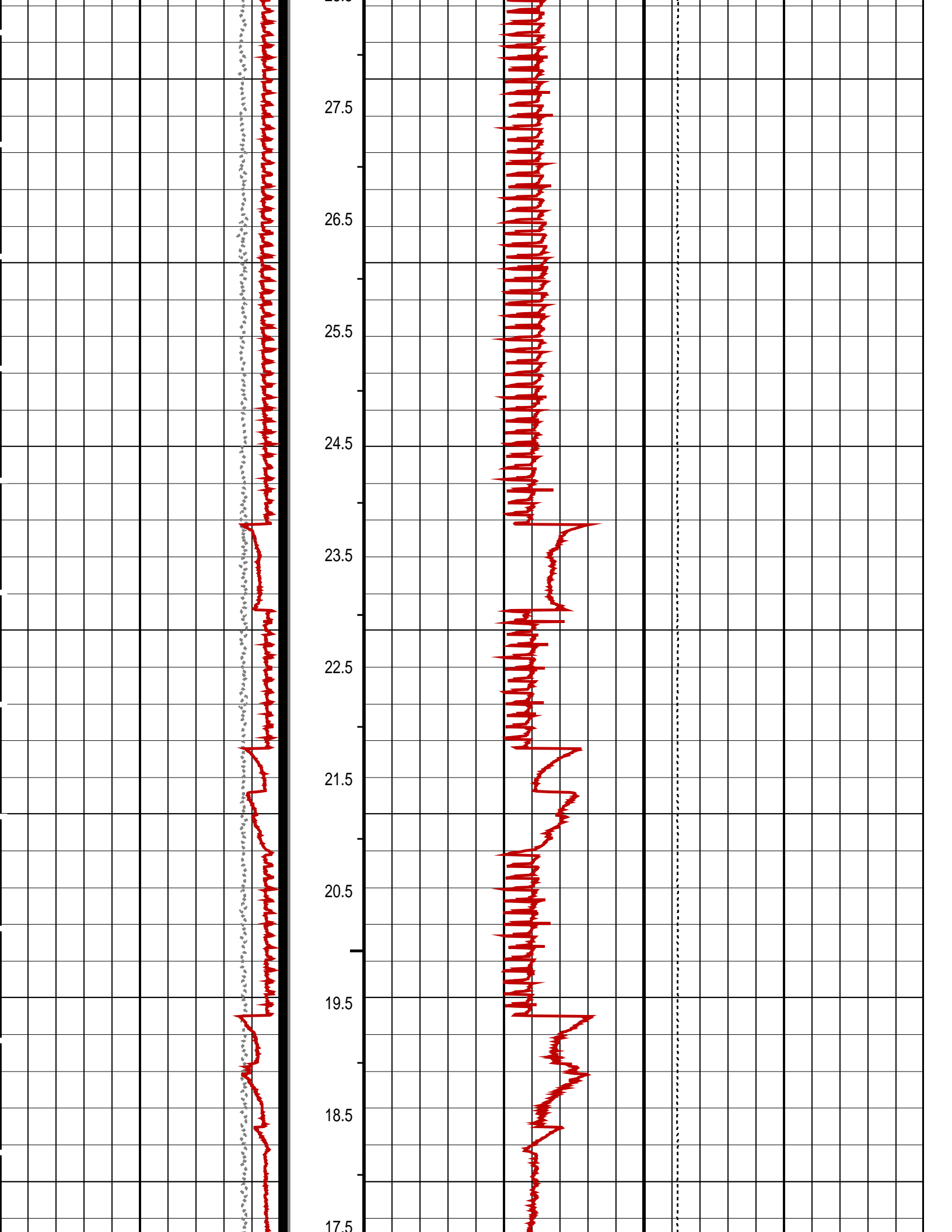
7 5/8" MPBT Plug

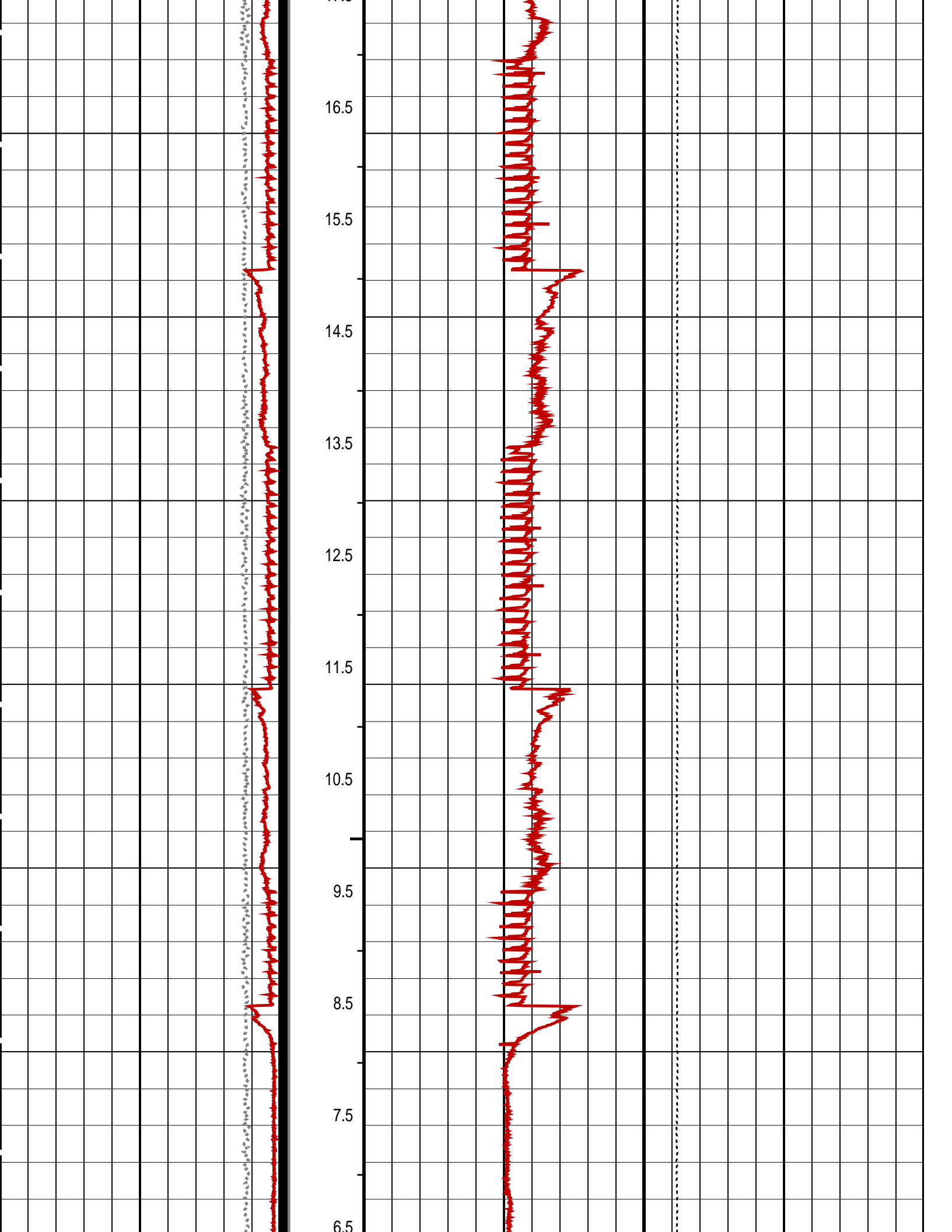
SET @ 2673.5m MDKB

MAXIS Field Log

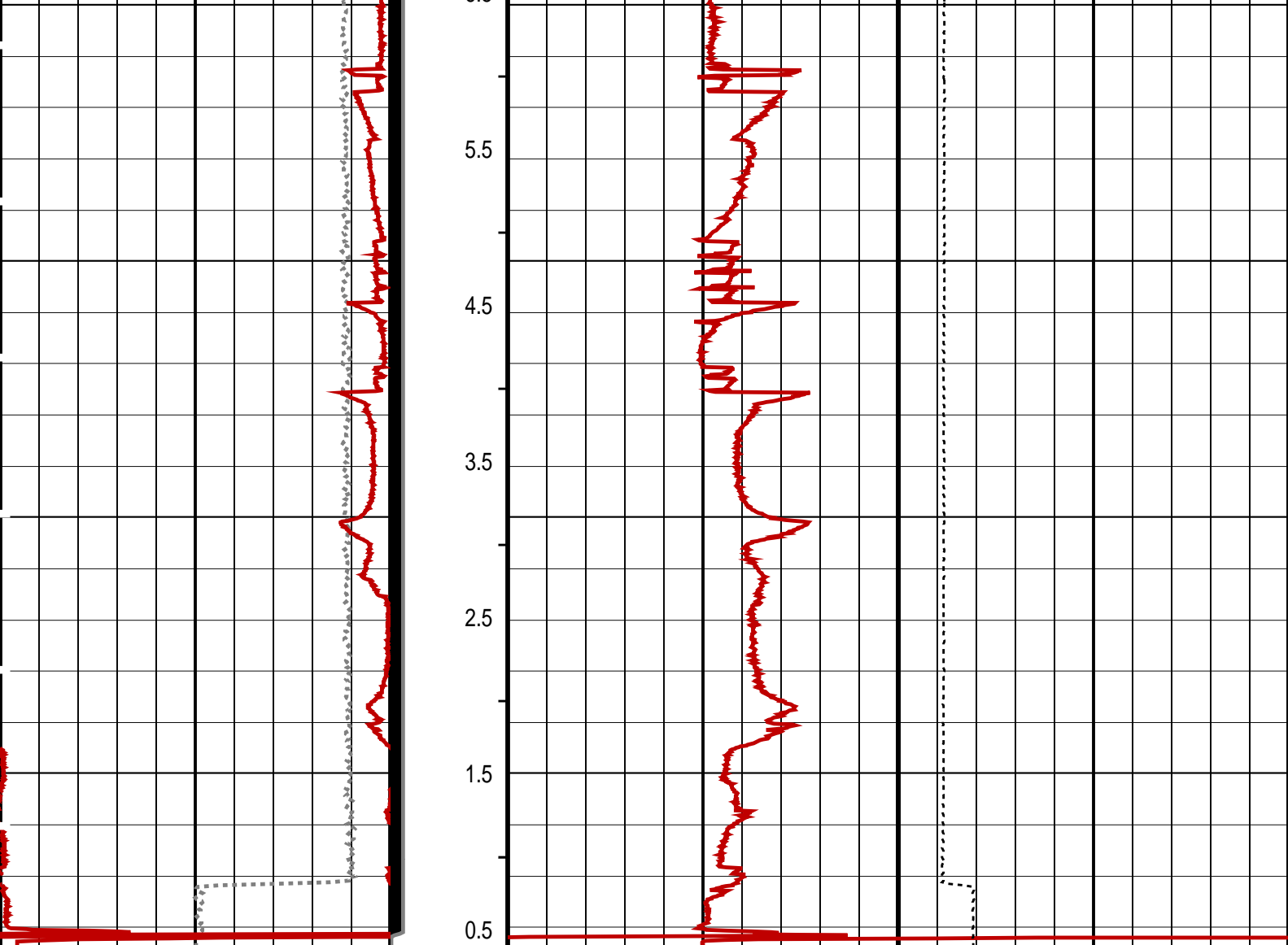
Output DLIS Files		
DEFAULT	MPBT_039LUP	FN:38 PRODUCER 15-Feb-2007 16:34
OP System Version: 14C0-302		
MCM		
MPEX-BA	SRC-3220-WPP-AAP\$	MPSU-CA
CCL-L	14C0-302	SRC-3220-WPP-AAP\$
PIP SUMMARY		
<div> <div></div> <div>MPSU Run Time Every 1 MN</div> <div>MPSU Run Time Every 10 MN</div> </div>		
Time Mark Every 60 S		
	RUN Time (RTIM) (MN)	
MPSU Head Voltage (HV)	MPSU Run Status (STAT)	Tension (TENS)
200 (V) 300	0 (----10	2000 (LBF) 0
Differential Tension (DTEN)	ON/Int From D3T to STAT	MPBM Cable Current (CCUR)
-200 (LBF) 200	300	(MA) 700
<div> <div>39.5</div> </div>		











Differential Tension (DTEN) (LBF)	ON/Int From D3T to STAT	MPBM Cable Current (CCUR) (MA)
-200 200		300 700
MPSU Head Voltage (HV) (V)	MPSU Run Status (STAT)	Tension (TENS) (LBF)
200 300	0 (----10)	2000 0
	RUN Time (RTIM) (MN)	

PIP SUMMARY

⊥ MPSU Run Time Every 1 MN

⊣ MPSU Run Time Every 10 MN

Time Mark Every 60 S

Parameters		
DLIS Name	Description	Value
IPUMP	MPSU-CA: MECHANICAL PLUGBACK SETTING UNIT Intensifier Pump	TRUE
Format: MPBT Vertical Scale: 1:600		Graphics File Created: 15-Feb-2007 16:34
OP System Version: 14C0-302 MCM		
MPEX-BA CCL-L	SRC-3220-WPP-AAP5 14C0-302	MPSU-CA SRC-3220-WPP-AAP5

Output DLIS Files

Schlumberger

Correlation Pass

MAXIS Field Log

Output DLIS Files

DEFAULTMPBT\_038LUPFN:37PRODUCER15-Feb-2007 16:182670.2 M2622.3 M

OP System Version: 14C0-302

MCM

MPEX-BA  
CCL-L

SRC-3220-WPP-AAP5  
14C0-302

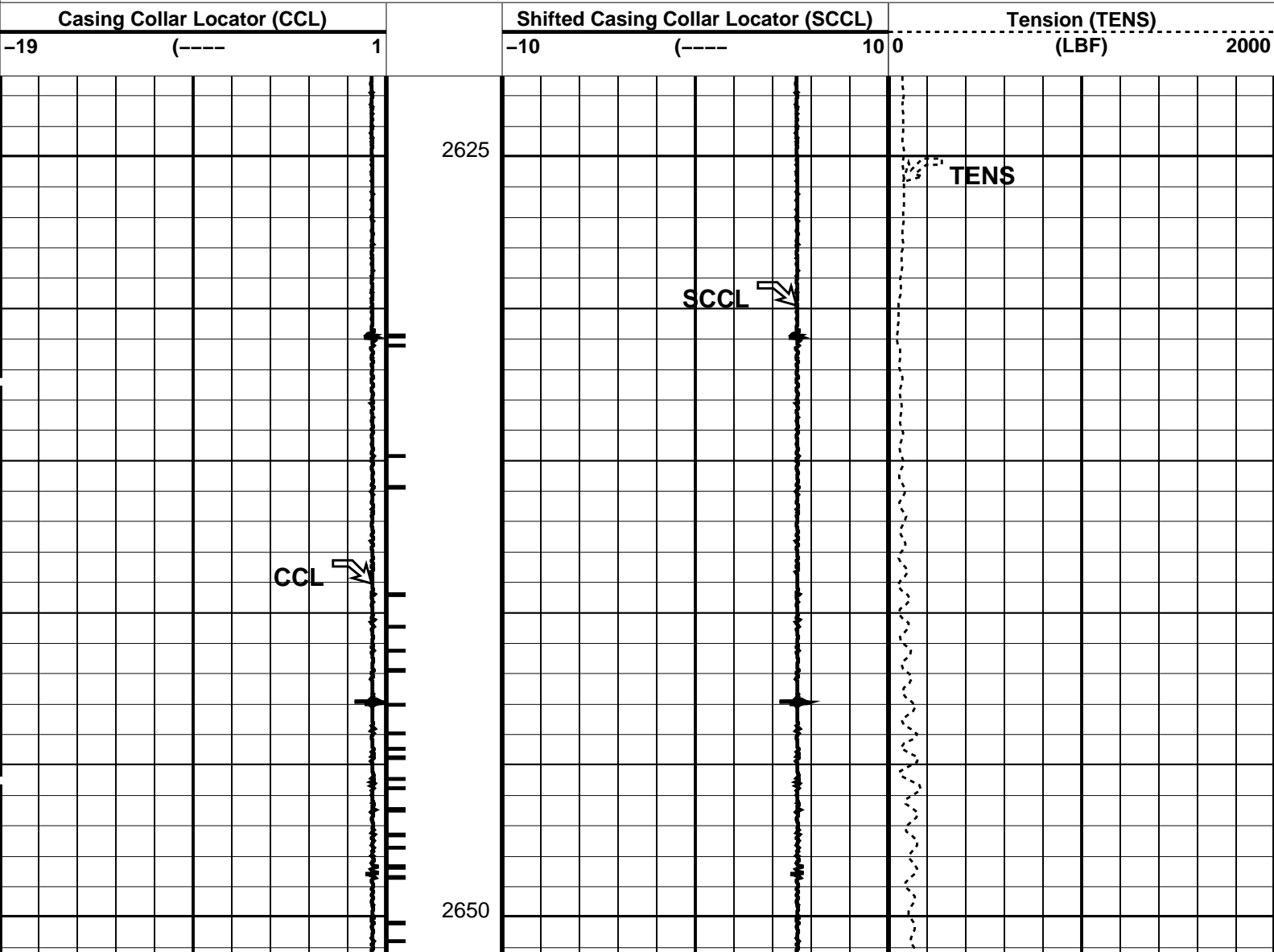
MPSU-CA

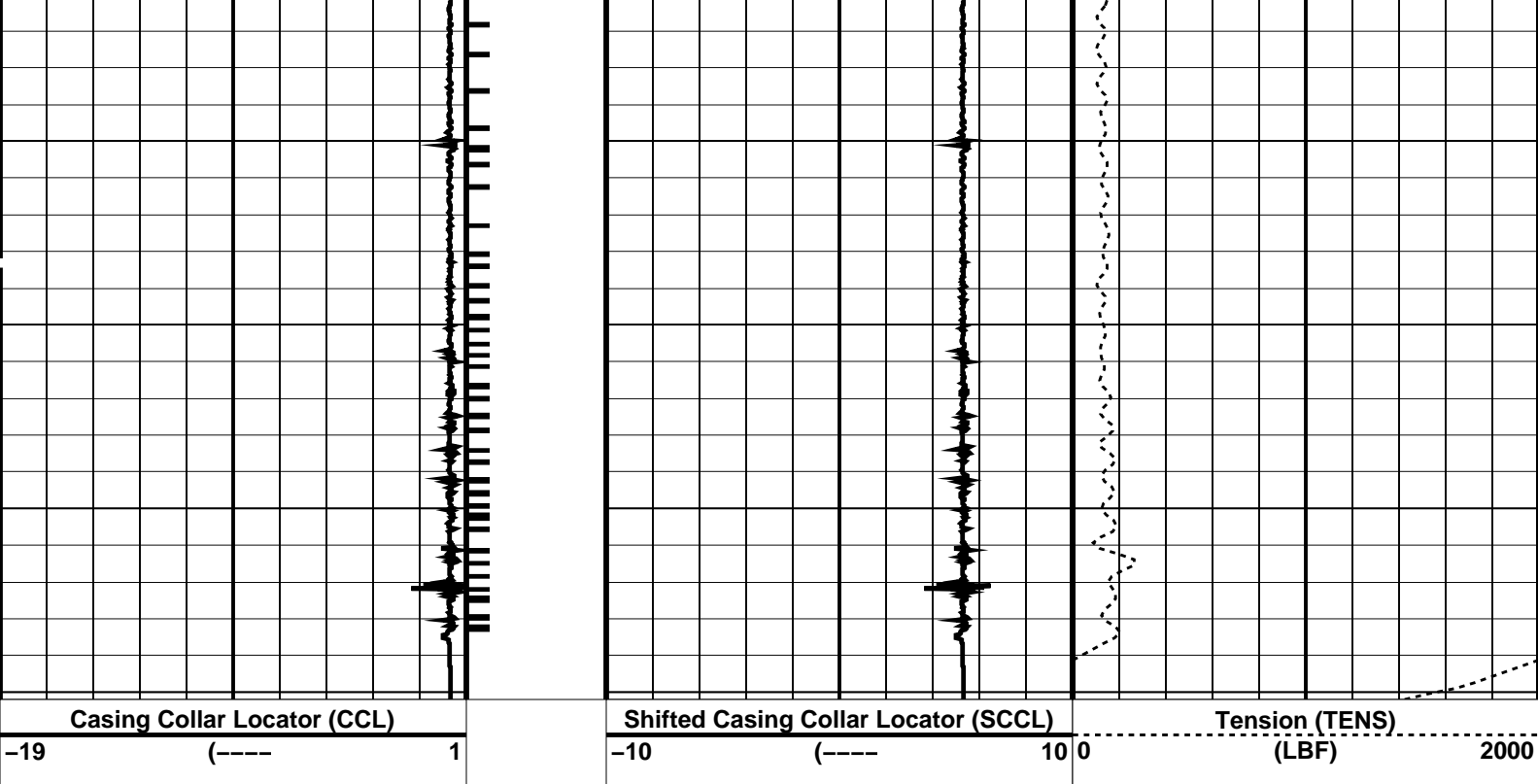
SRC-3220-WPP-AAP5

PIP SUMMARY

Time Mark Every 60 S

Casing Collars





PIP SUMMARY

└─ Casing Collars

Time Mark Every 60 S

Parameters

DLIS Name	Description	Value
CCL-L: Casing Collar Locator		
CCLD	CCL reset delay	12 IN
CCLT	CCL Detection Level	0.3 V

Format: PERFO Vertical Scale: 1:200

Graphics File Created: 15-Feb-2007 16:18

OP System Version: 14C0-302

MCM

MPEX-BA SRC-3220-WPP-AAP5 MPSU-CA SRC-3220-WPP-AAP5  
CCL-L 14C0-302

Output DLIS Files

DEFAULT MPBT\_038LUP FN:37 PRODUCER 15-Feb-2007 16:18

Company: Esso Australia Pty/Ltd.

Schlumberger

Well: A-4B

Field: Flounder

Rig: Prod 4 / Crane

Country: Australia

7 5/8" Possiset Plug  
Setting Record  
Cement Dump Bailer