



**GEOFRAME  
PROCESSED  
INTERPRETATION**

# BestDT\* SonicVision Processing

570m - 1700m (1/500)

\* A Mark of Schlumberger

Using the following logs:      sonicVision

COMPANY:      Apache Energy Ltd.  
WELL:            Elver-1  
FIELD:          VIC-PS9  
RIG:             Ocean Patriot  
STATE:          VIC  
COUNTRY:       Australia  
  
Date Processed:      24-Dec-2008

FOLD HERE      The well name, location and borehole reference data were furnished by the customer.

All interpretations are opinions based on inferences from electrical or other measurements and we cannot, and do not guarantee the accuracy or correctness of any interpretation, and we shall not, except in the case of gross or willful negligence on our part, be liable or responsible for any loss, costs, damages or expenses incurred or sustained by anyone resulting from any interpretations made by any of our officers, agents or employees. These interpretations are also subject to Clause 4 of our General Terms and Conditions as set out in our current Price Schedule.

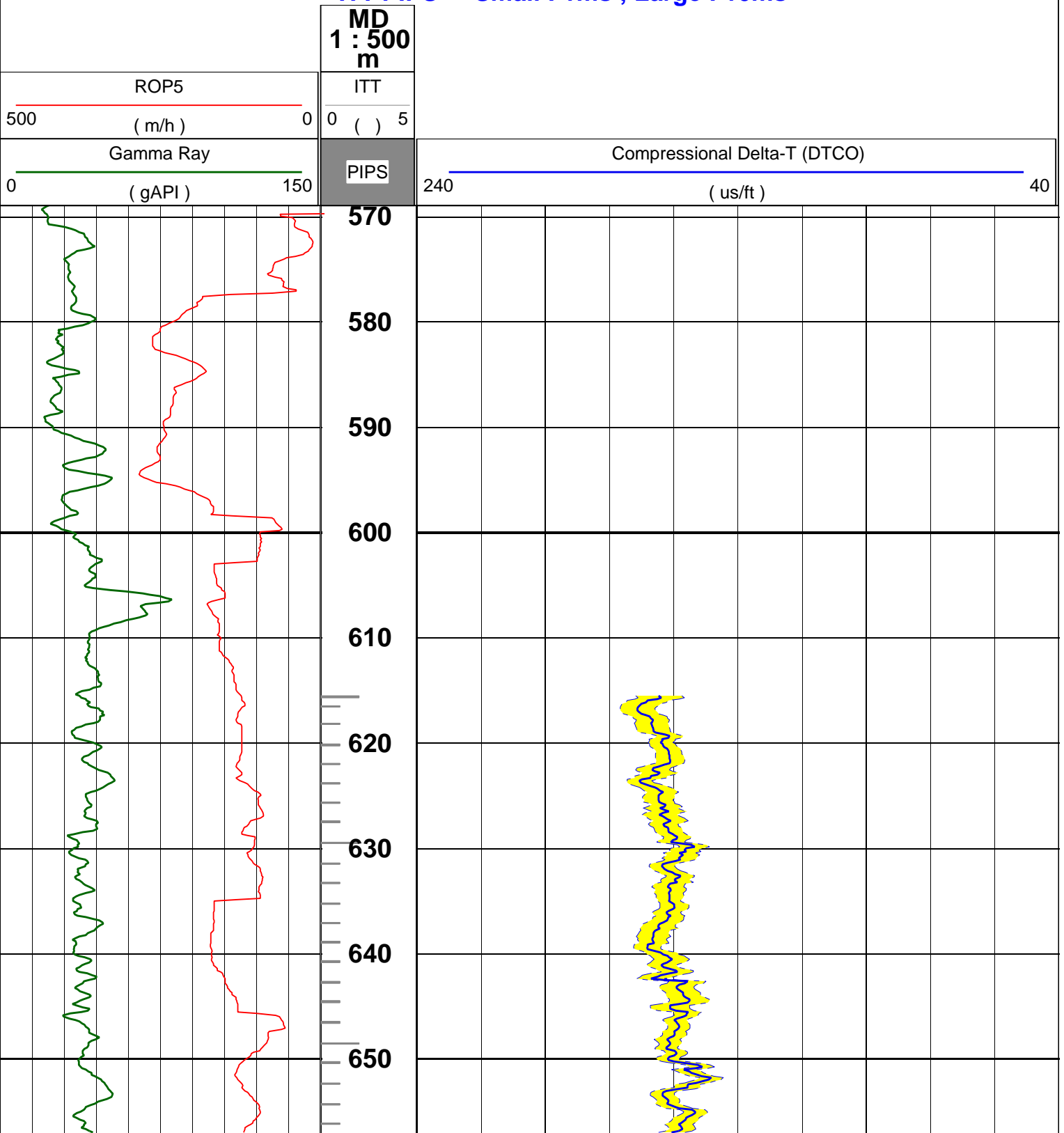
Field Recording:	Location:	Software Version: 13X0-101	Engineer: J.Oldridge/L.Calthrop/D.Per
Office Recording:	ICS Center: Melbourne	Baseline: GF 4.3 DC3	Log Analyst: A. Datey

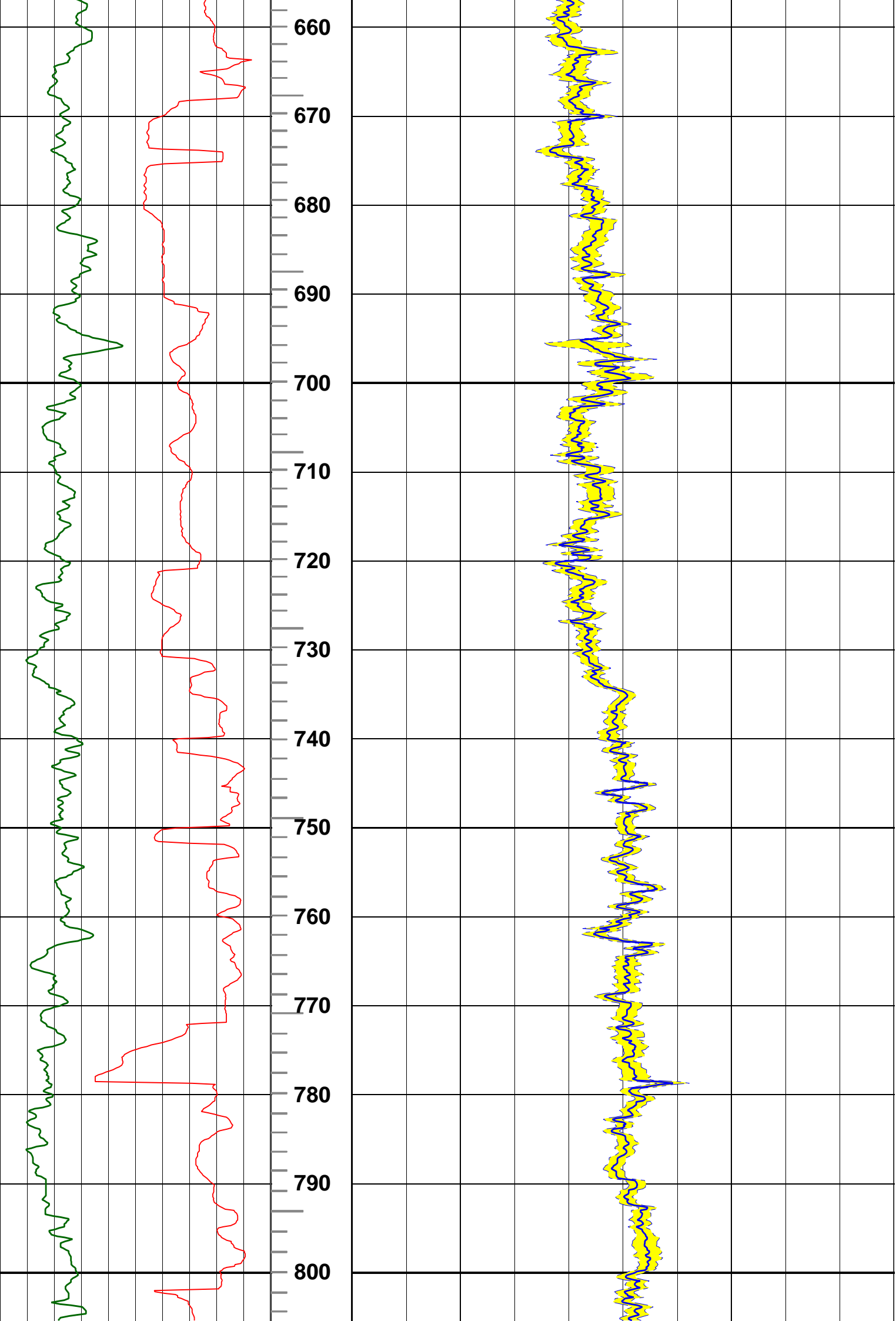
**Mud and Borehole Measurements:**

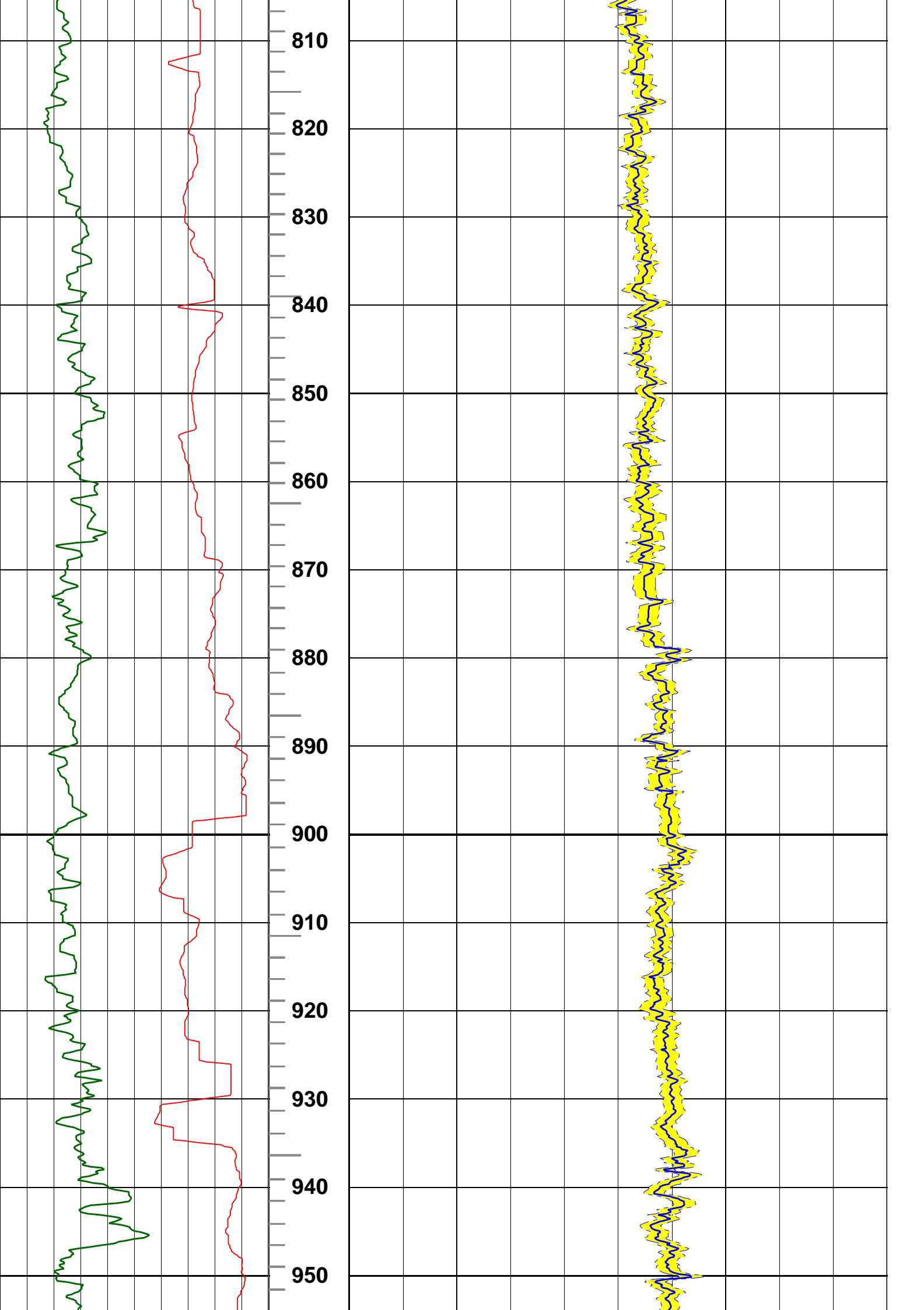
Rm @ Measured Temperature:      @	BHT:	Bitsize:      16in
Rmf @ Measured Temperature:      @	Type Fluid in Hole:	
Rmc @ Measured Temperature:      @	Mud Density: 1.35g/cm3	

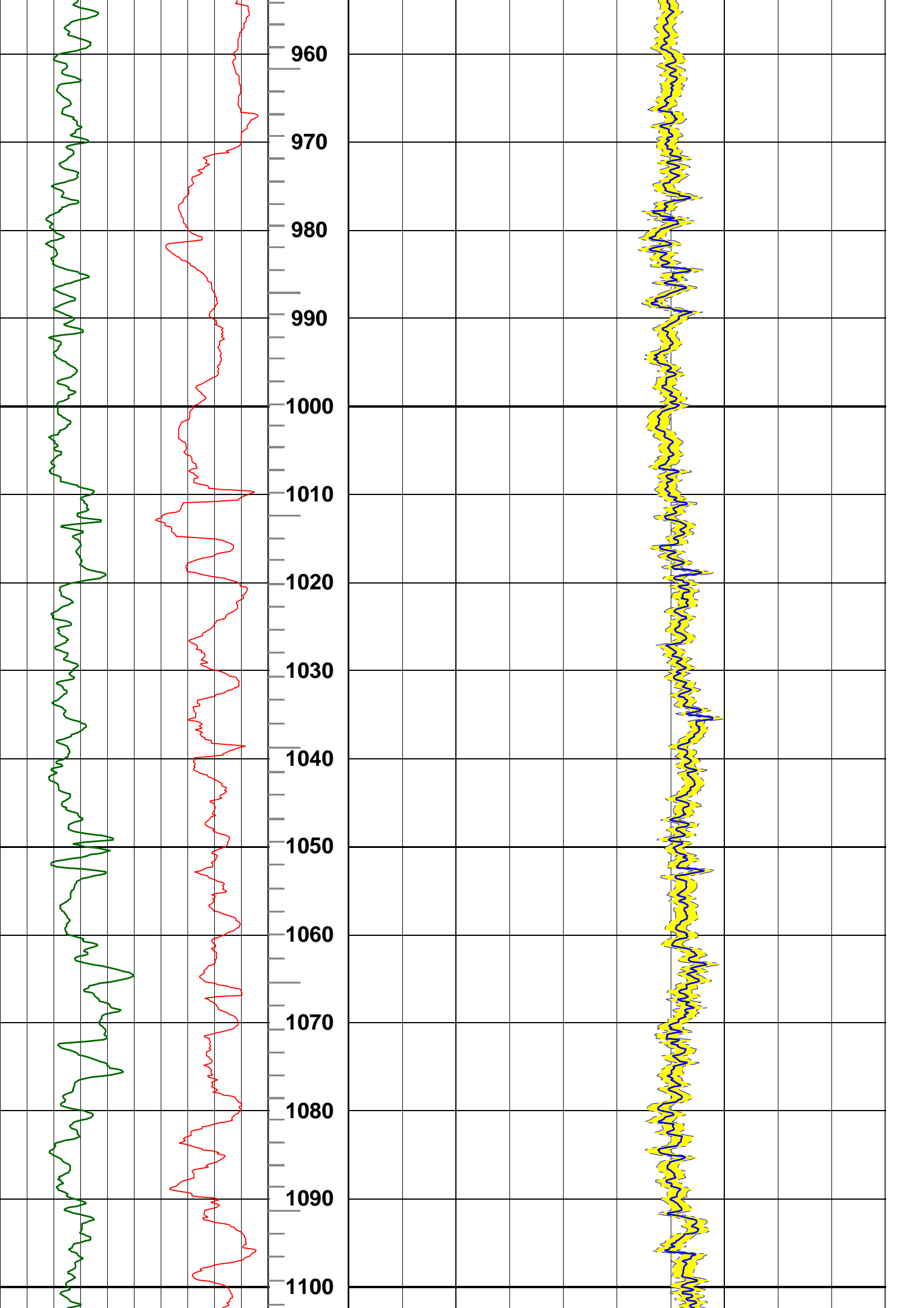
Remarks:  
sonicVision9 run in hole drilled with 16" bit size.  
The data has been affected by drilling speed.  
Drilling speed of over 55 m/hr (180 ft/hr) will result is data not being sampled every 6".  
For processing parameters see the bottom of the log.

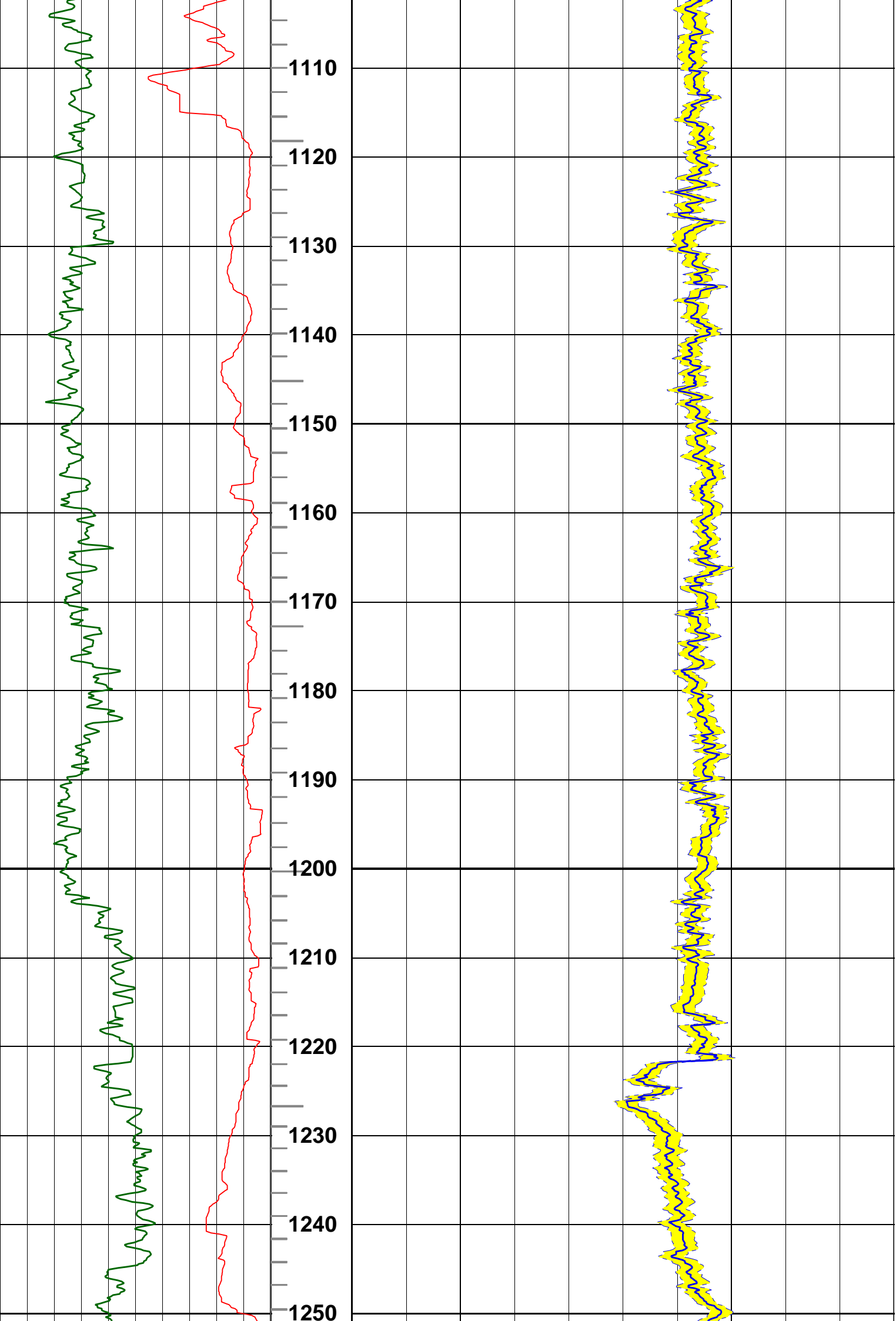
ITT PIPS - Small : 1ms ; Large : 10ms

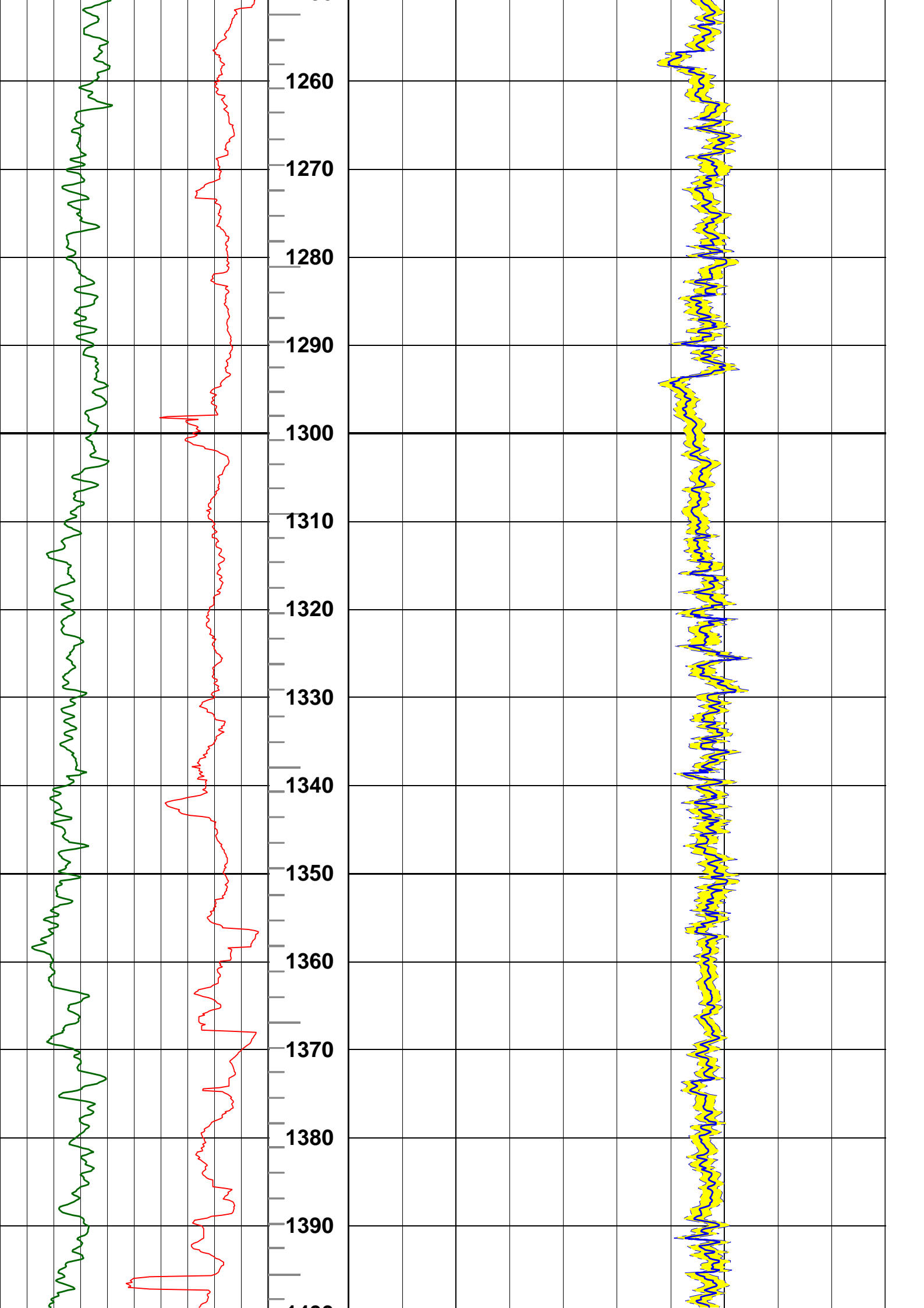


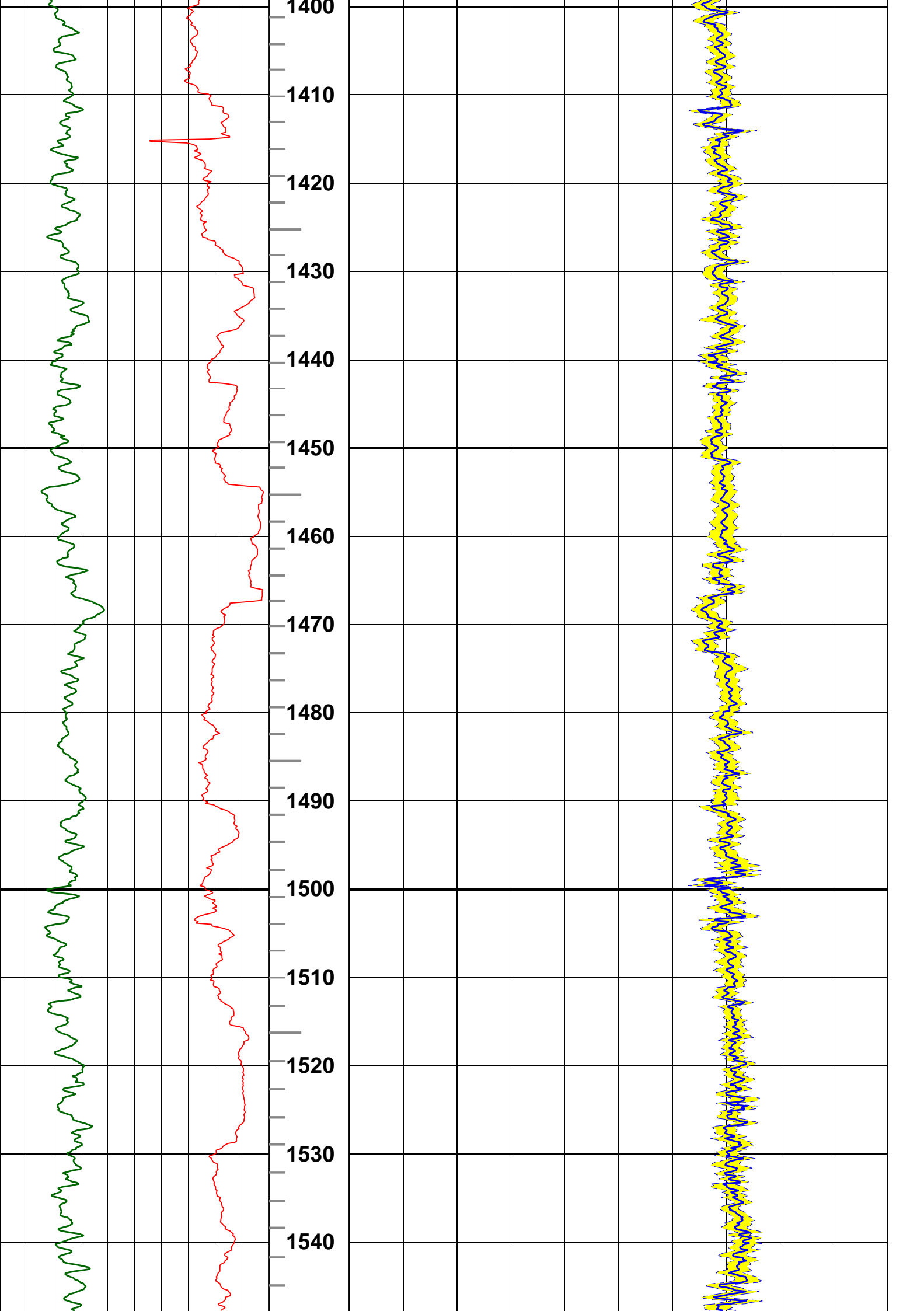




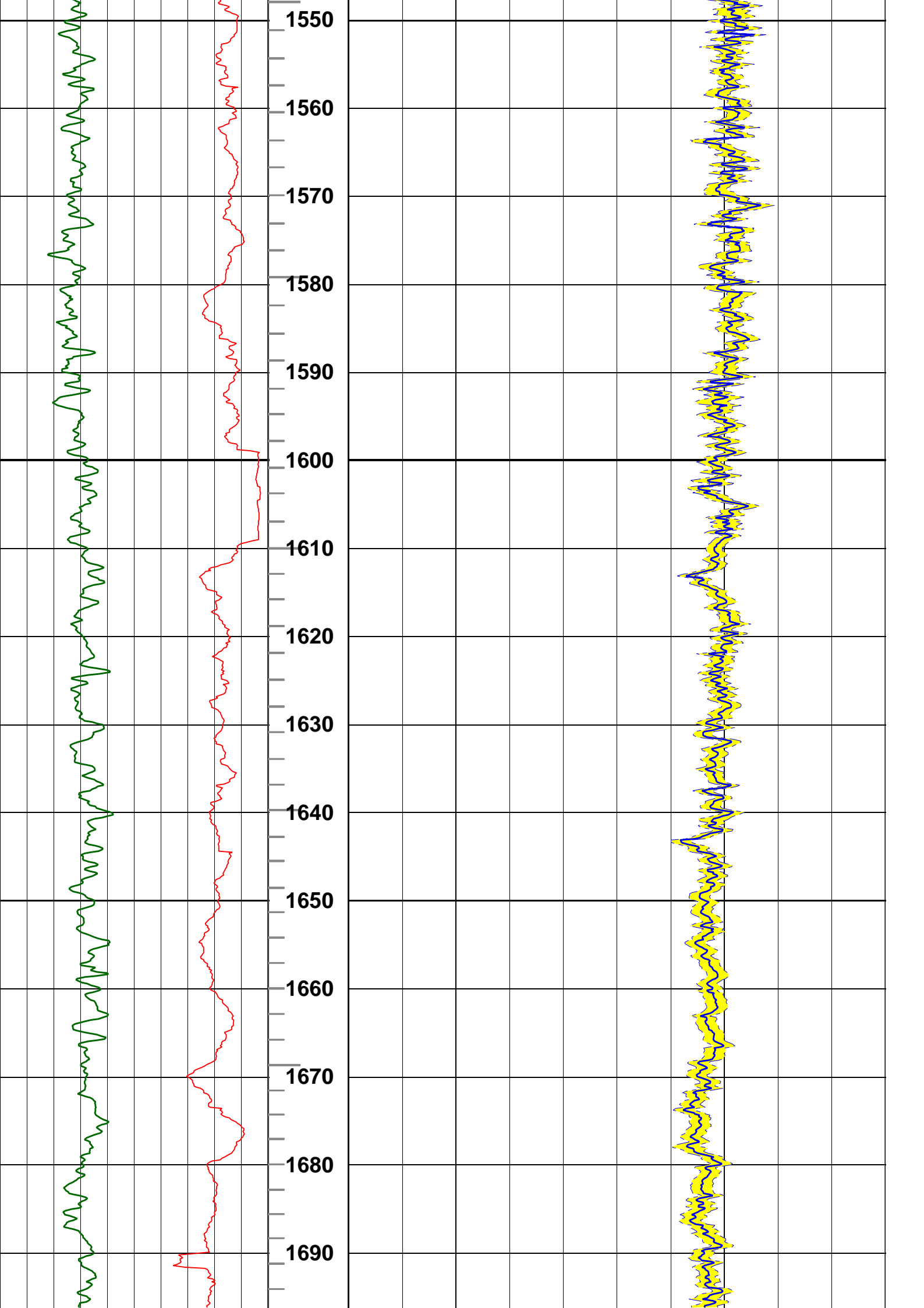








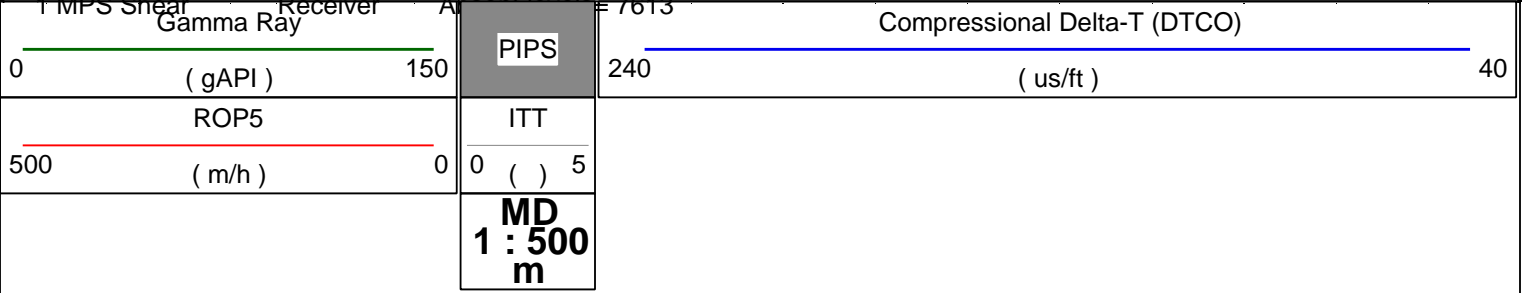




1700

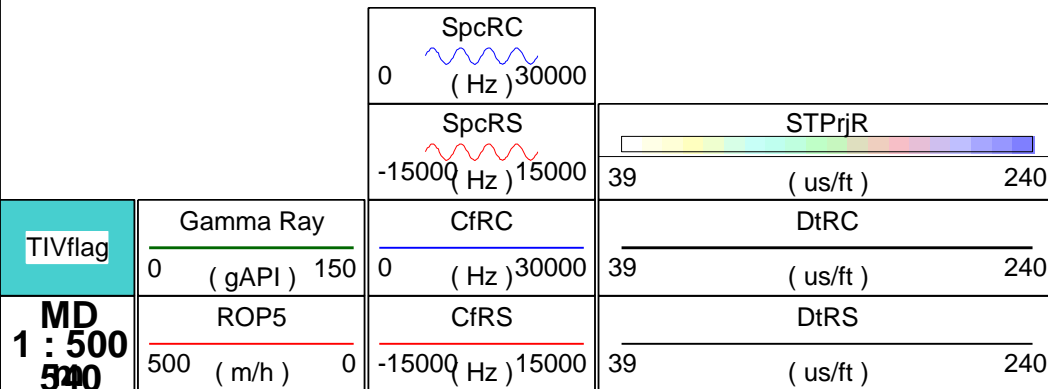
--- Finalization Result ---

1 MPS Compressional Receiver Absent levels= 539  
 1 MPS Compressional Transmitter Absent levels= 565  
 1 MPS Shear Receiver Absent levels= 7613



Monopole Compressional Processing QC

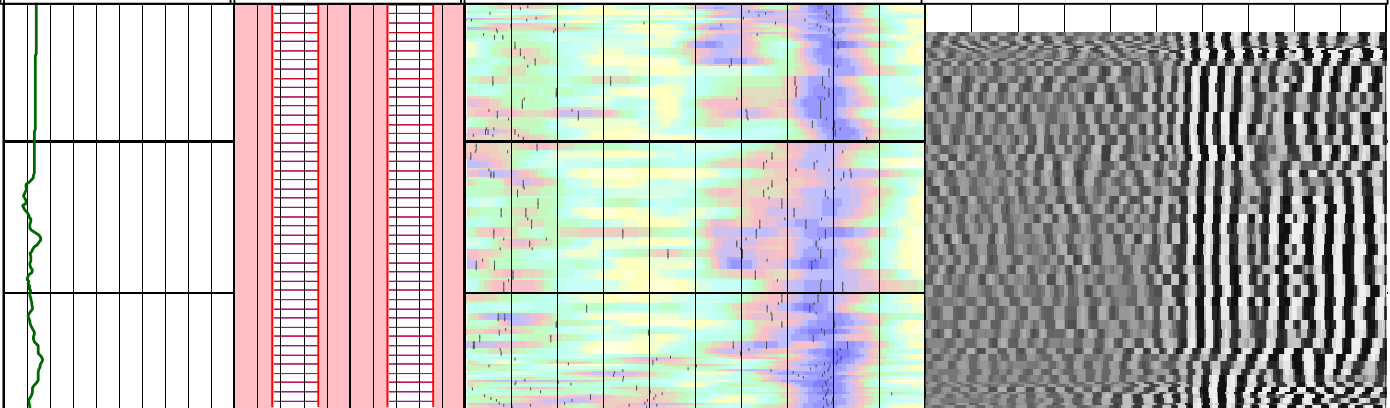
WF VDL		
400	( us )	3378
TICS		
400	( us )	3378
TISS		
400	( us )	3378

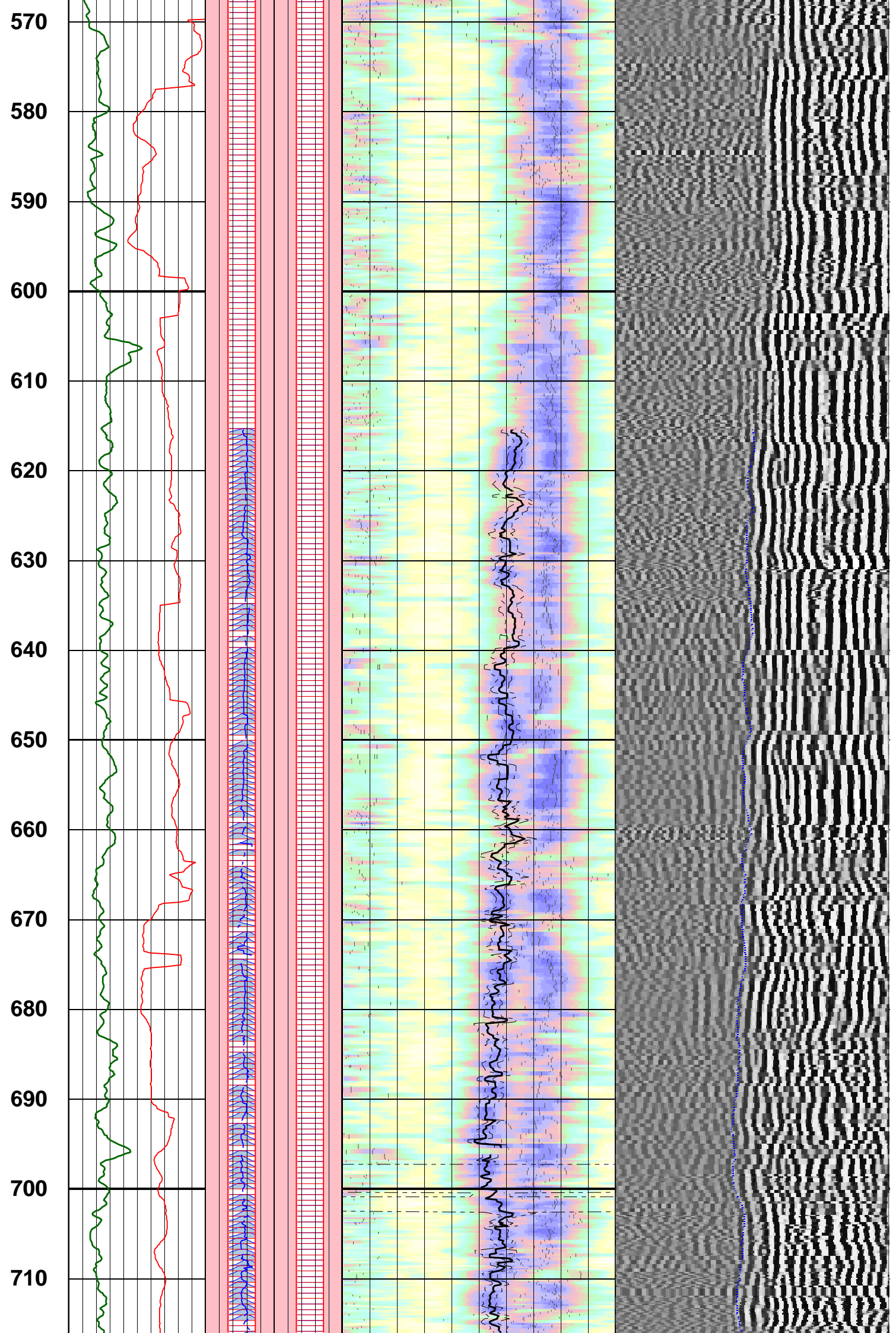


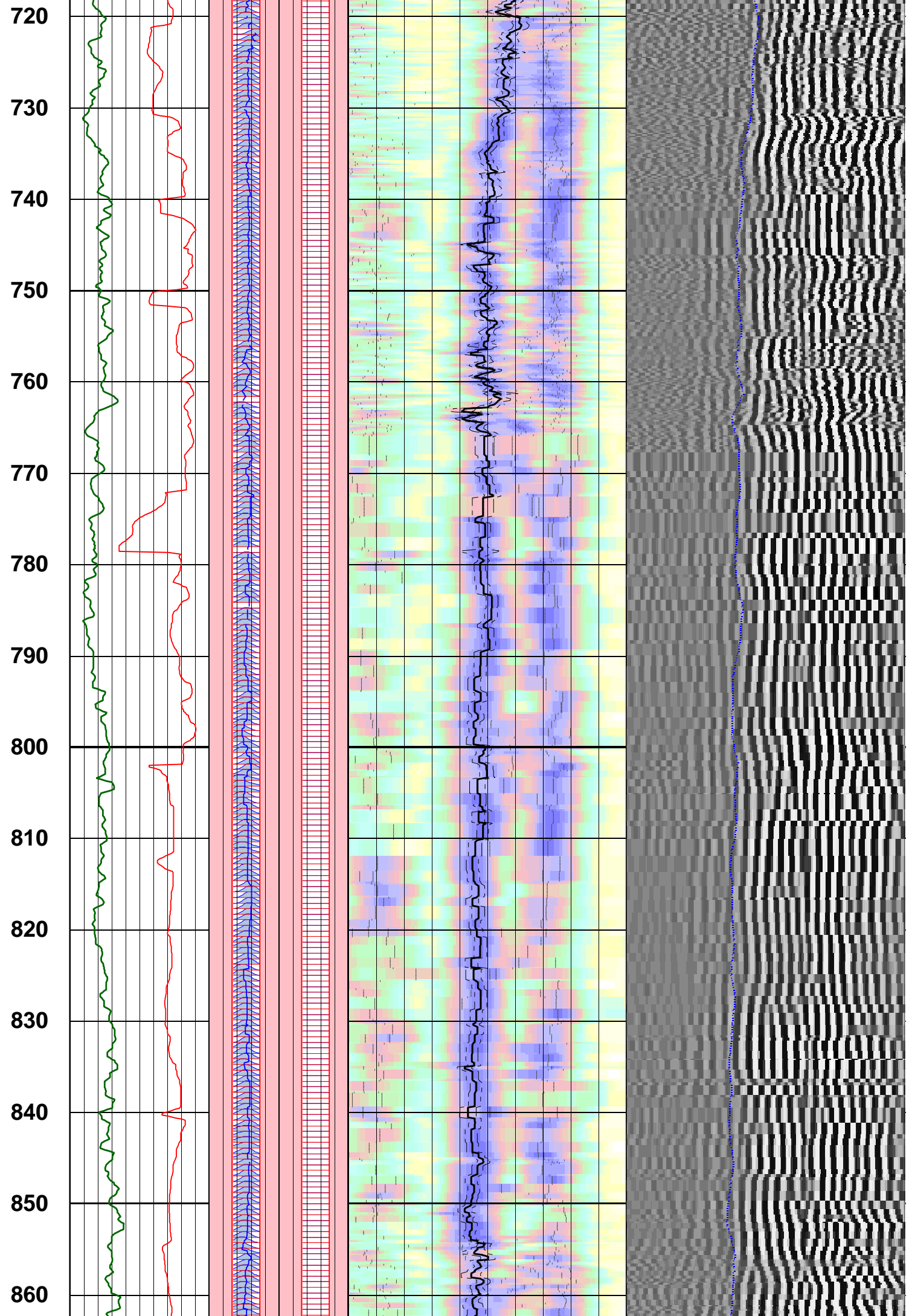
TIVflag  
 MD 1 : 500 540

550

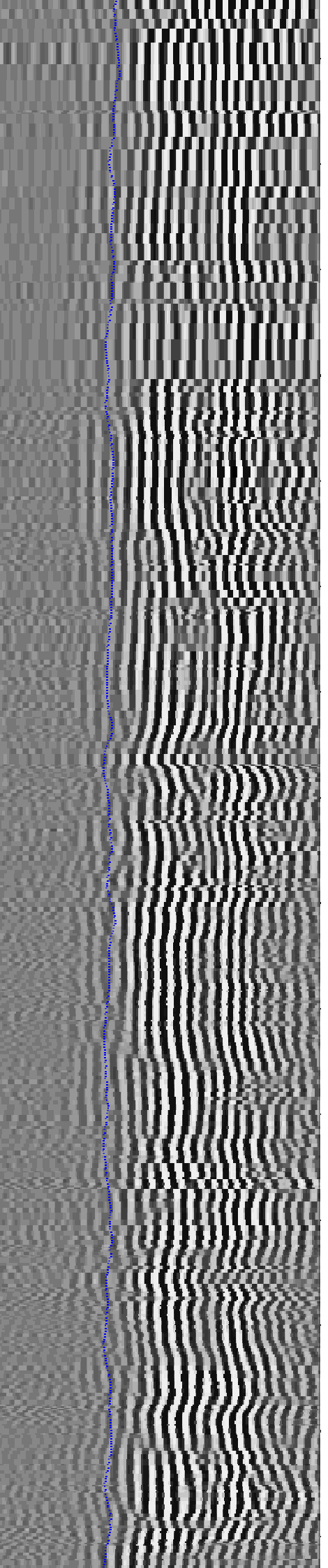
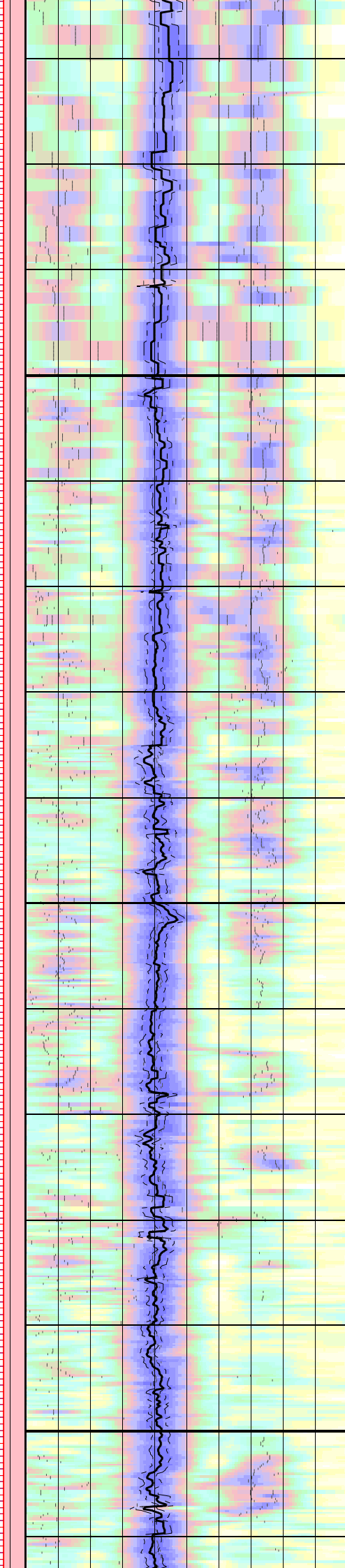
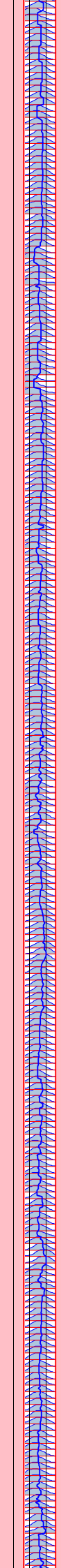
560

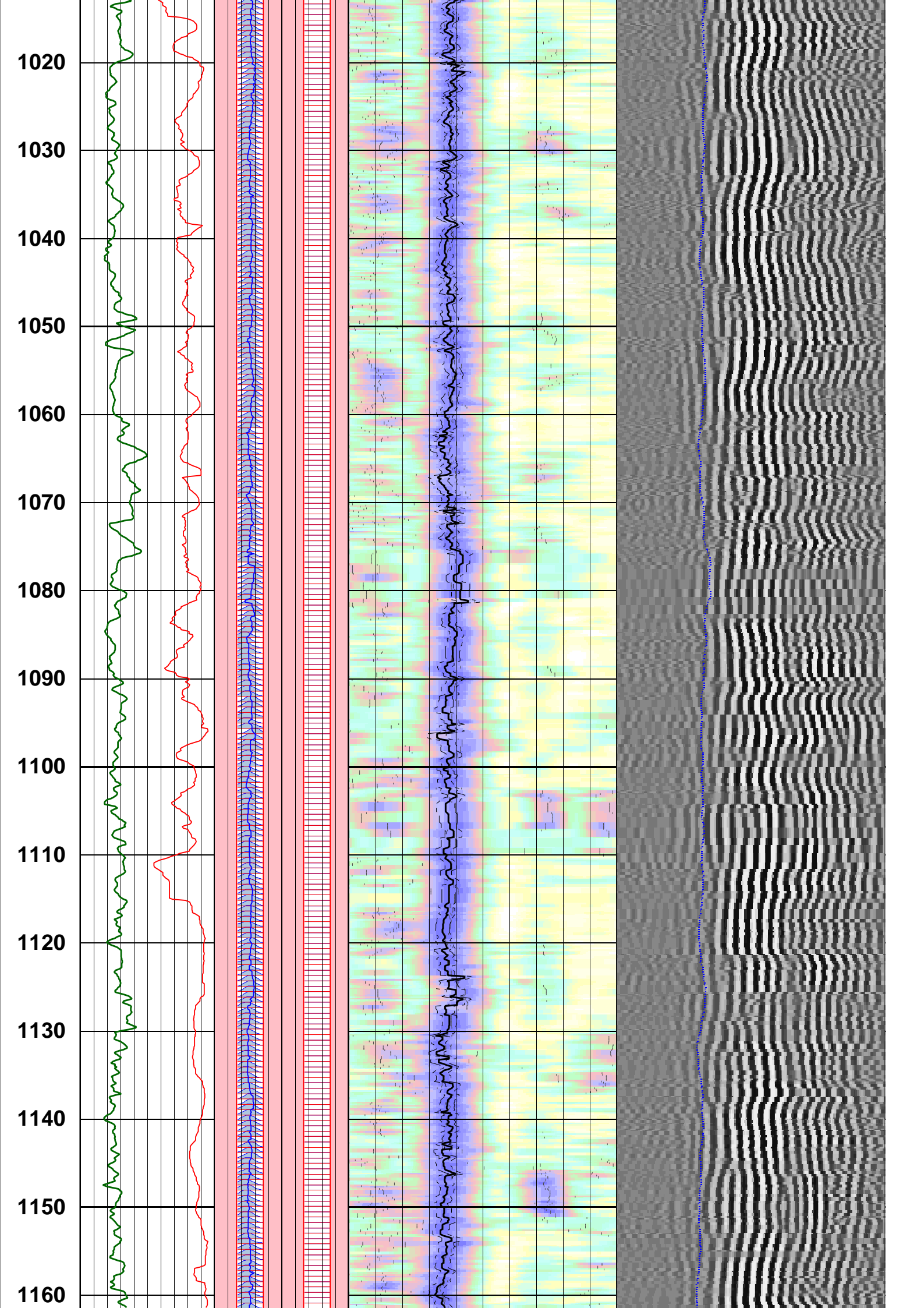


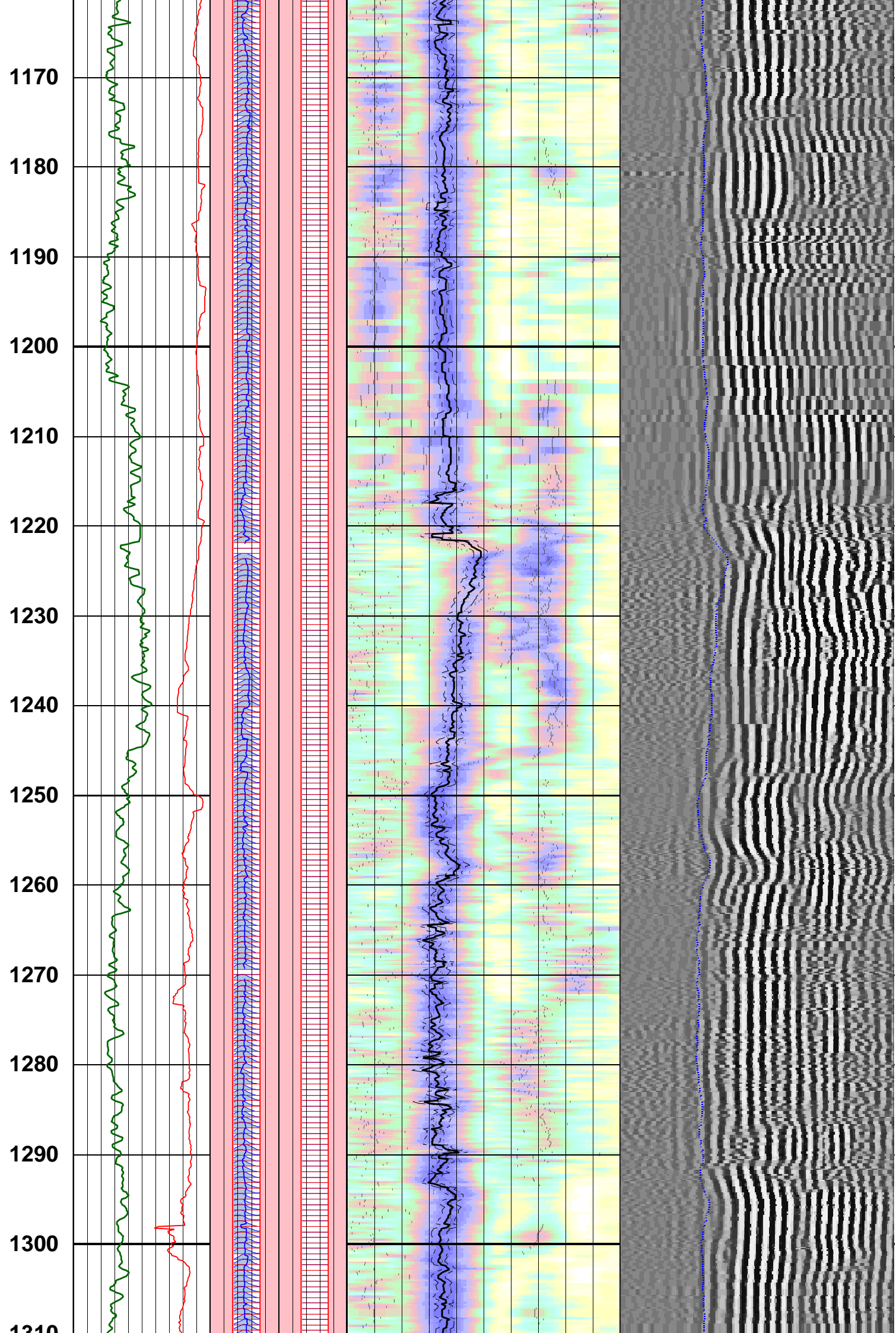


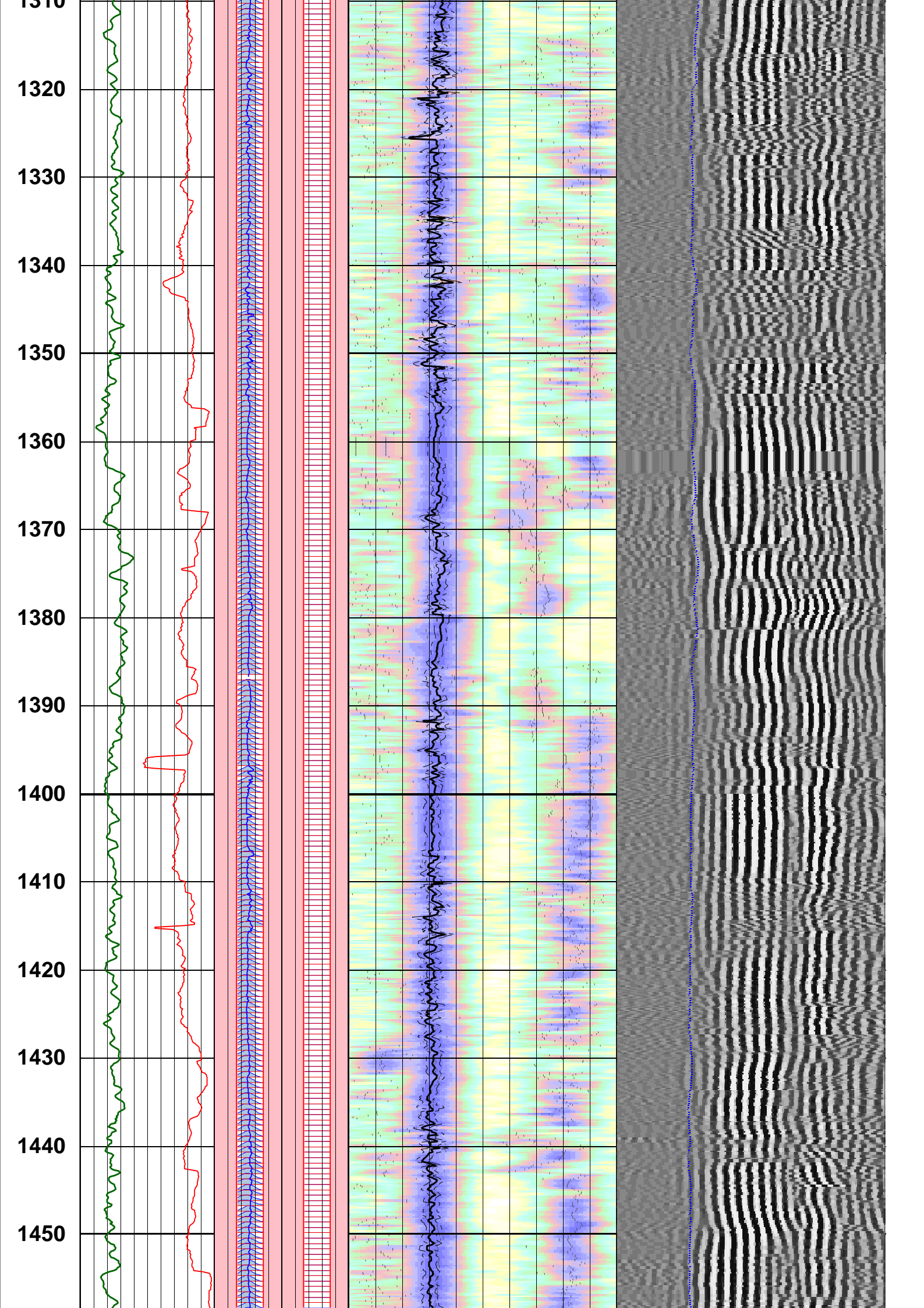


870  
880  
890  
900  
910  
920  
930  
940  
950  
960  
970  
980  
990  
1000  
1010

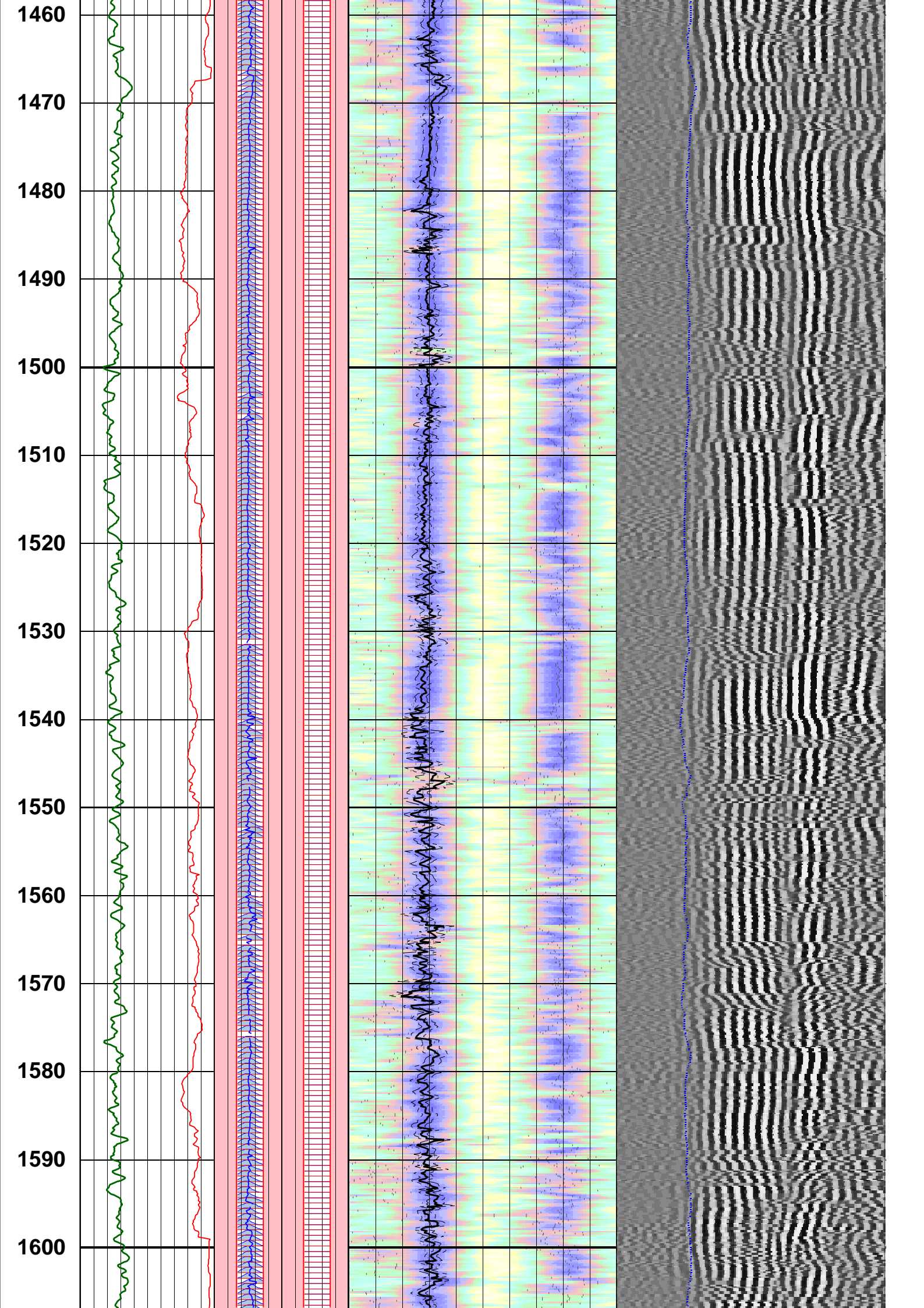


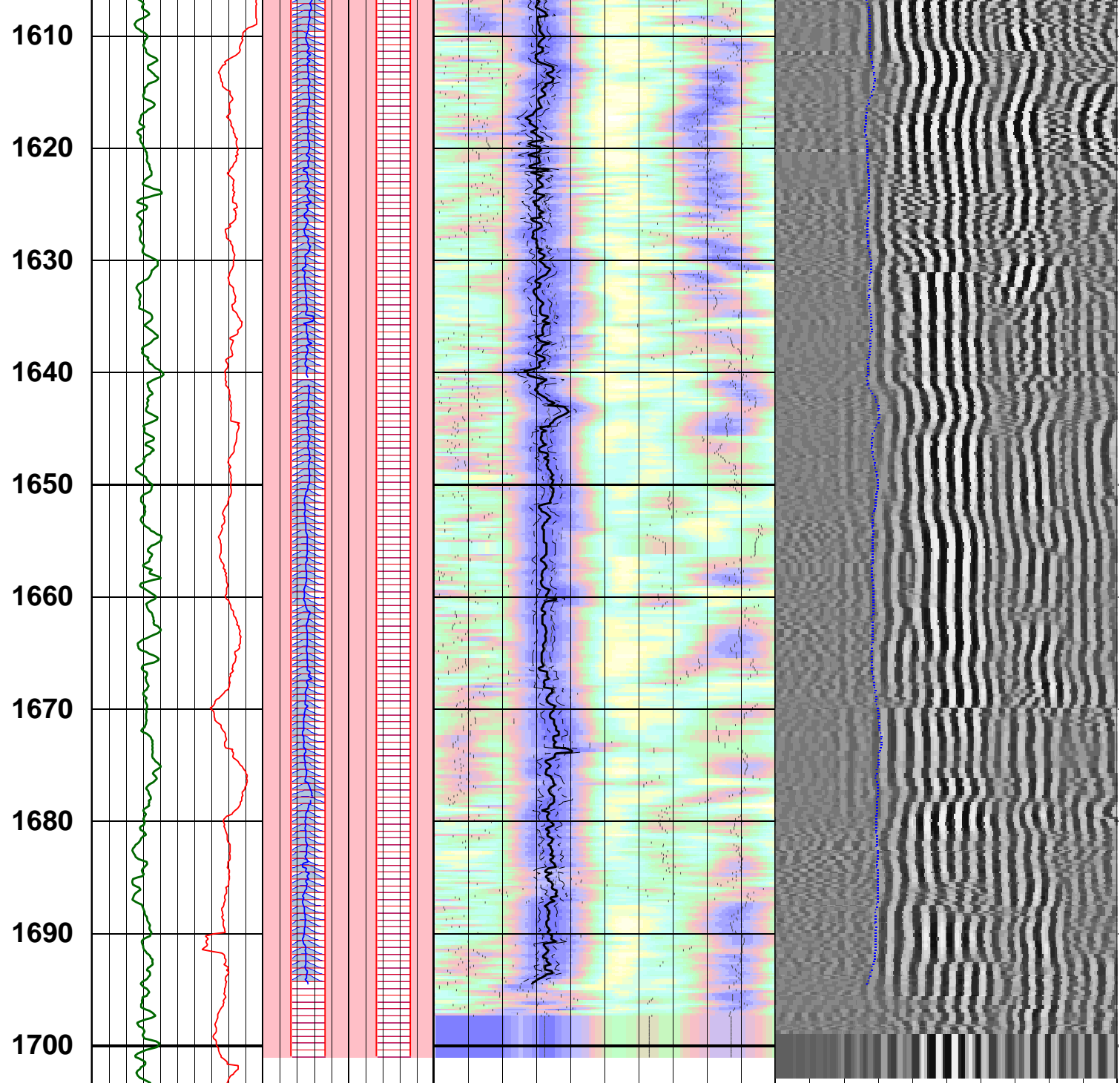










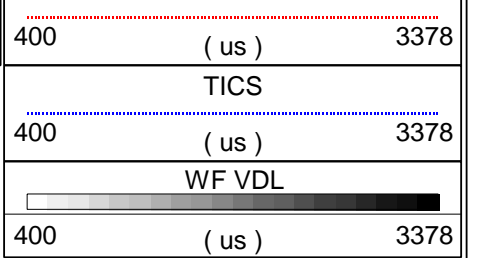
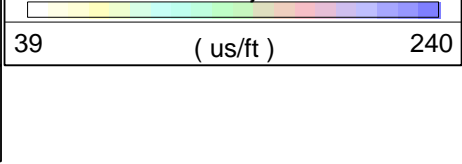
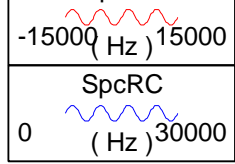


Customized Process: Start Depth (1701.05 m), Stop Depth (540.968 m), Logging Mode (sonicVISION - MPS\_WIDE)  
 Noise Cut Filtering(Yes - Median Residual, WS 720), Casing Cut Filtering(No)  
 WF\_FLG(1 1 1 1), MUD\_TYPE(WBM), STCAL(Full Array)  
 TRSPAC(3.05714), RRSPAC(0 0.2032 0.4064 0.6096)  
 Mud Slowness (no input)  
 Hole Diameter (no input)  
 Zoning Guide (DTBC@LWD\_040SDP;1 (477.012 - 1741.78 m))  
 Tracking Guide (no input)

--- Zone Top Depth (0), Zone Name (Zone1) ---

SFTY(Intermediate), BHS(OPEN), CSIZ(13.375), HDM(Fix\*), HD(16), DTMUD(200)  
 TWI(277.995\*), SLL(39.7135), SUL(240.267), SST(1.98568), TLL(400), TUL(3259.38), TST(39.7135)  
 SBW(1200\*), SBO(760\*), SWD(20), TWD(840), SEM(0.45), FLENG(49\*), FLOW(5000\*), FHIGH(11000\*)  
 TKO\_MODEL\_ORDER(2), TKO\_TOL(50) TKO\_FLOW(0), TKO\_FHIGH(12000)

MD 1 : 500 m	ROP5	CfRS	DtRS	
	500 (m/h) 0	-15000 (Hz) 15000	39	( us/ft ) 240
TIVflag	Gamma Ray	CfRC	DtRC	
	0 (gAPI) 150	0 (Hz) 30000	39	( us/ft ) 240
		SpcRS	STPrjR	
			TISS	



Company: Apache Energy Ltd.  
 Well: Elver-1  
 FIELD: VIC-P59  
 RIG: Ocean Patriot  
 STATE: VIC



Date Processed: 24-Dec-2008