

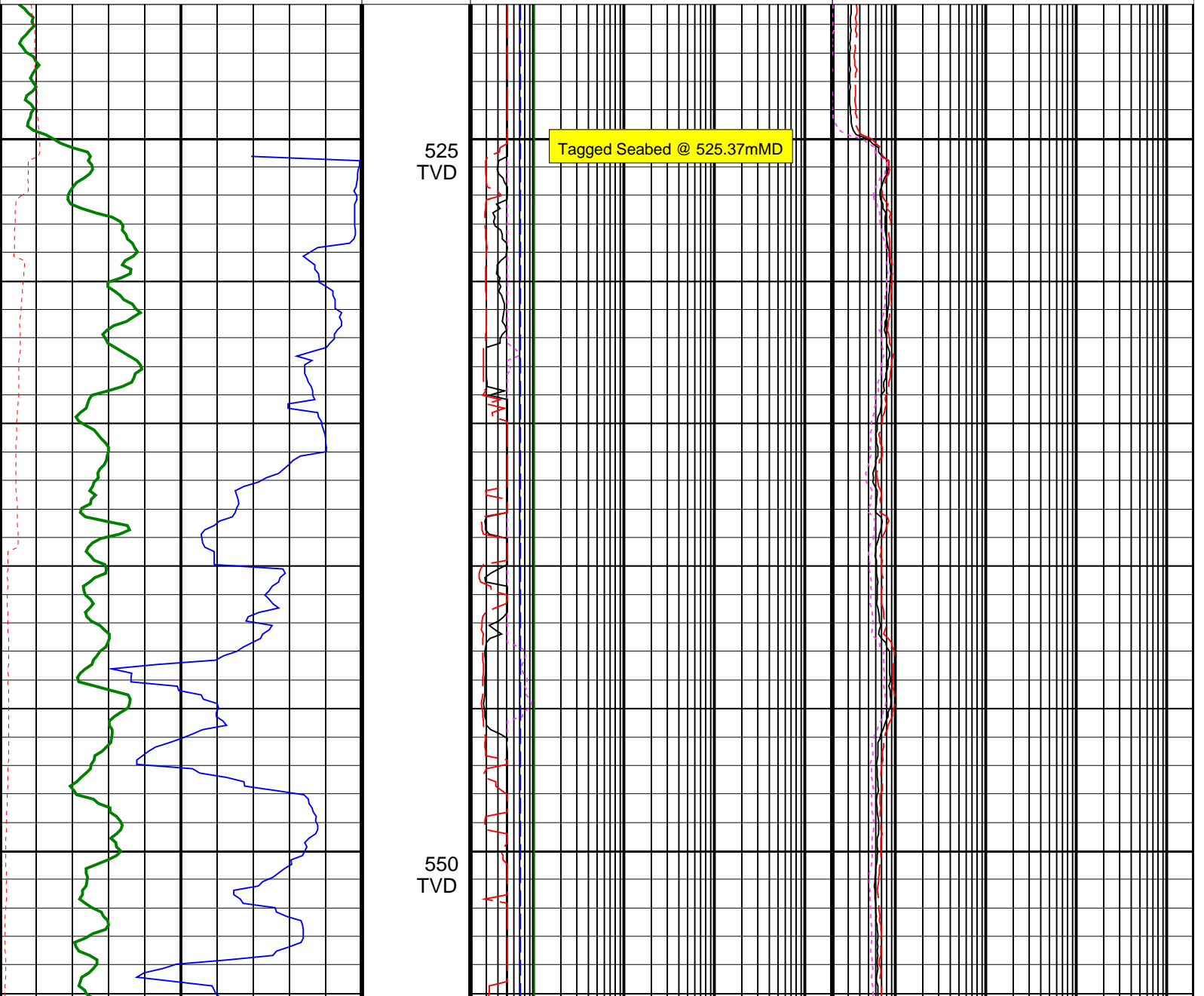
Elver-1_VISION Resistivity RM 200TVD

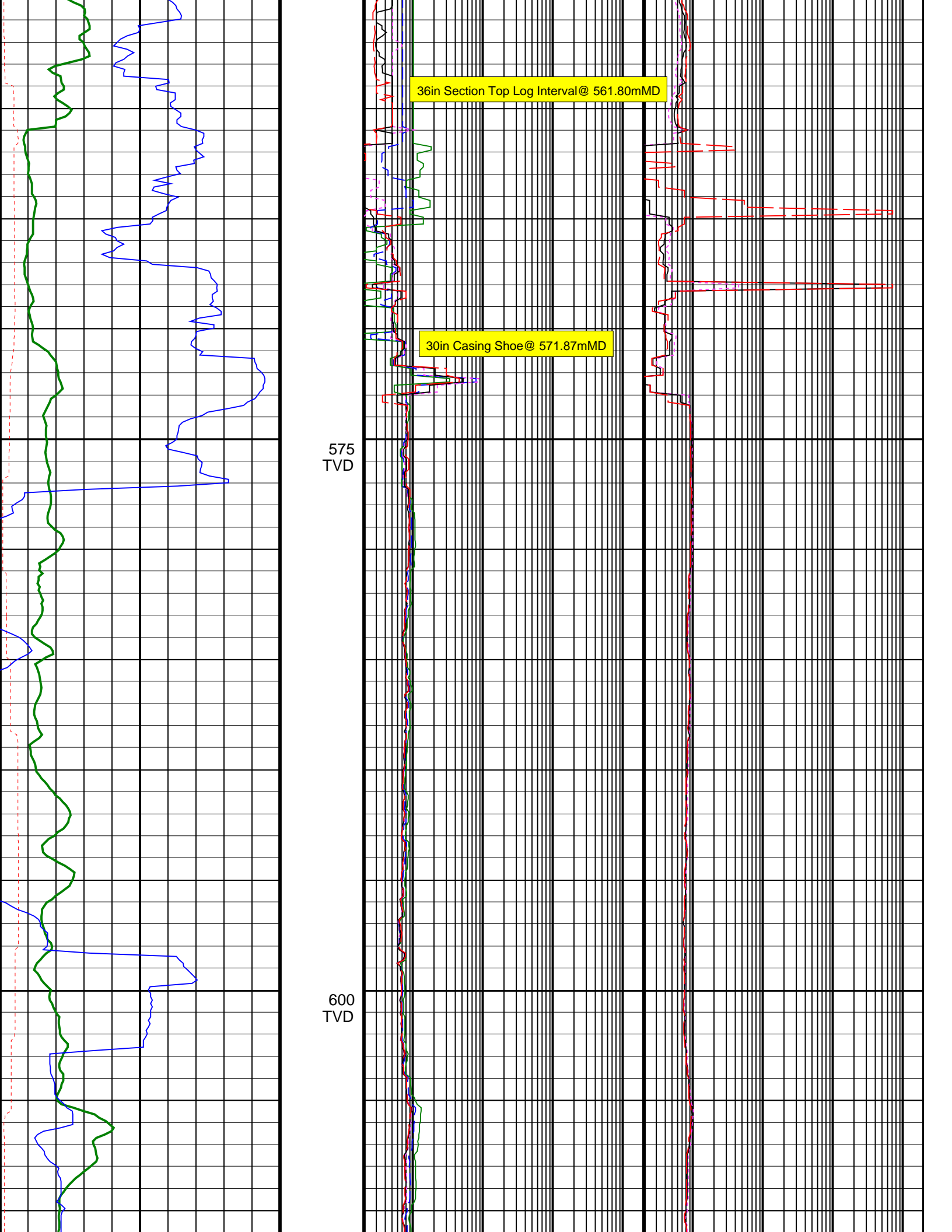
Format: ARC_200TVD

Vertical Scale: 1:200

Graphics File Created: 23-Dec-2008 19:01

	ARC Phase-Shift Resistivity 40-in. at 2 MHz (P40H) 0.2 (OHMM) 2000	
	ARC Phase-Shift Resistivity 34-in. at 2 MHz (P34H) 0.2 (OHMM) 2000	
Rate of Penetration, Averaged over Last 5ft (ROP5_RM) 200 (M/HR) 0	ARC Phase-Shift Resistivity 28-in. at 2 MHz (P28H) 0.2 (OHMM) 2000	ARC Attenuation Resistivity 40-in. at 2 MHz (A40H) 0.2 (OHMM) 2000
ARC Resistivity Time After Bit (TAB_ARC_RES) 0 (HR) 10	ARC Phase-Shift Resistivity 22-in. at 2 MHz (P22H) 0.2 (OHMM) 2000	ARC Attenuation Resistivity 34-in. at 2 MHz (A34H) 0.2 (OHMM) 2000
ARC Gamma Ray (GR_ARC) 0 (GAPI) 200	ARC Phase-Shift Resistivity 16-in. at 2 MHz (P16H) 0.2 (OHMM) 2000	ARC Attenuation Resistivity 28-in. at 2 MHz (A28H) 0.2 (OHMM) 2000



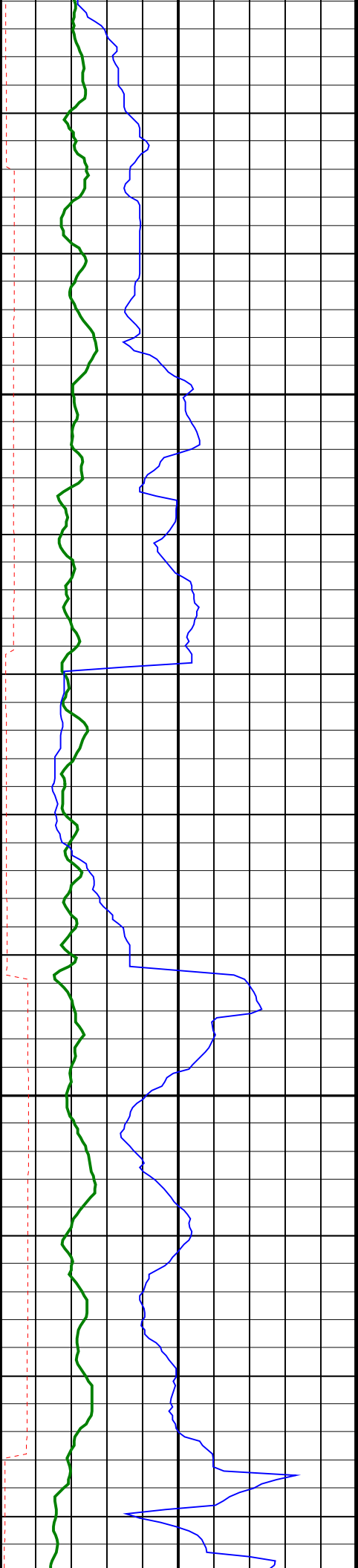


36in Section Top Log Interval @ 561.80mMD

30in Casing Shoe @ 571.87mMD

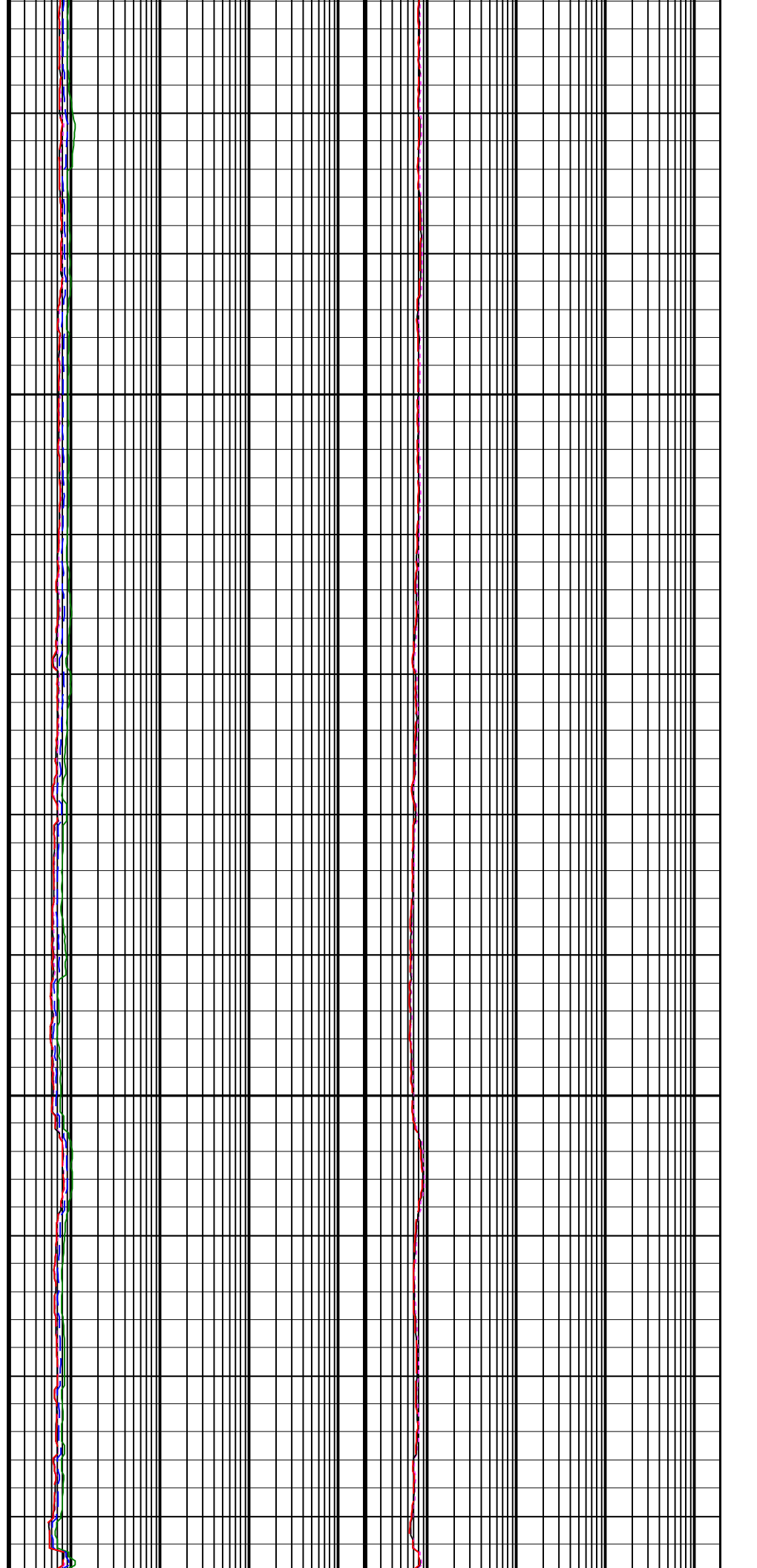
575
TVD

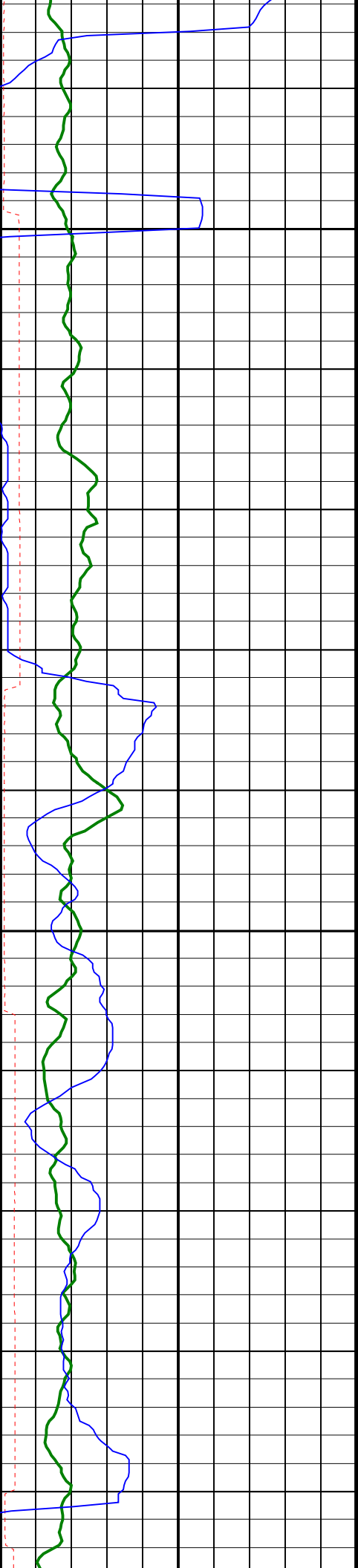
600
TVD



625
TVD

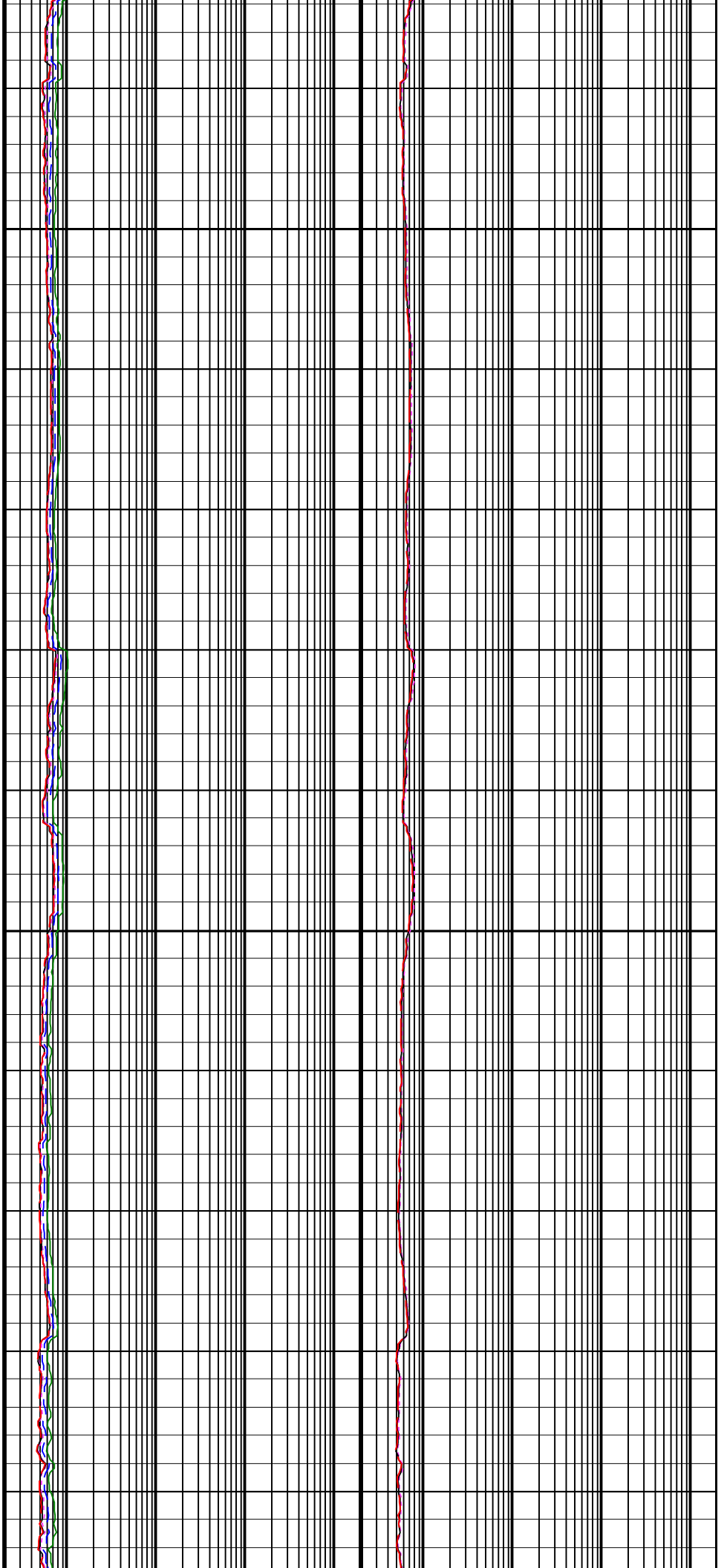
650
TVD

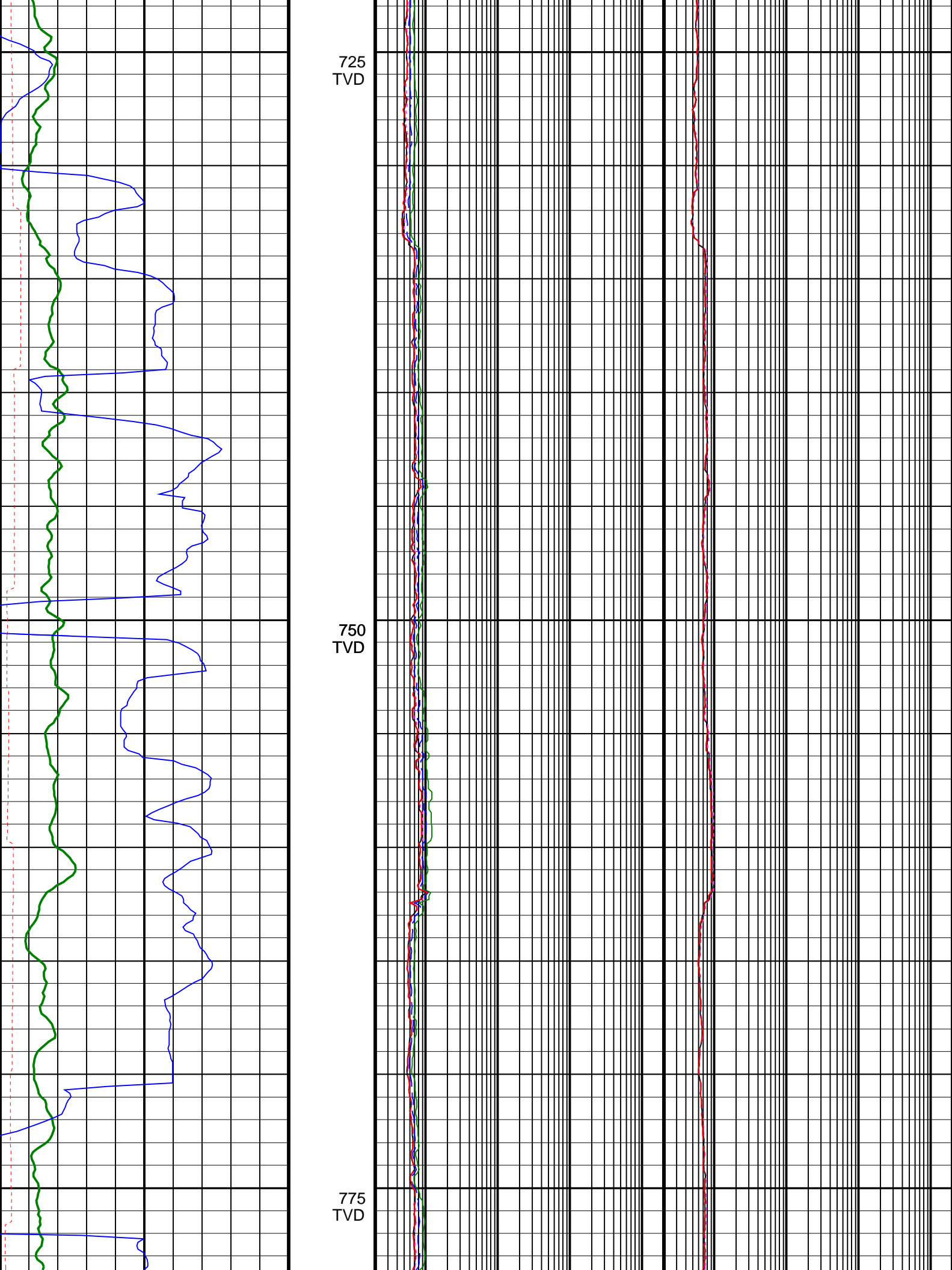




675
TVD

700
TVD

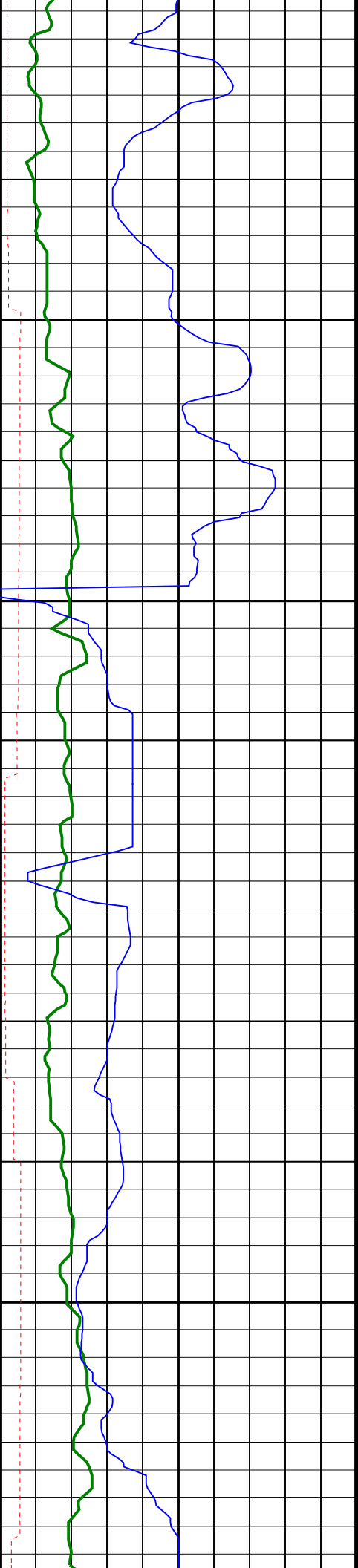




725
TVD

750
TVD

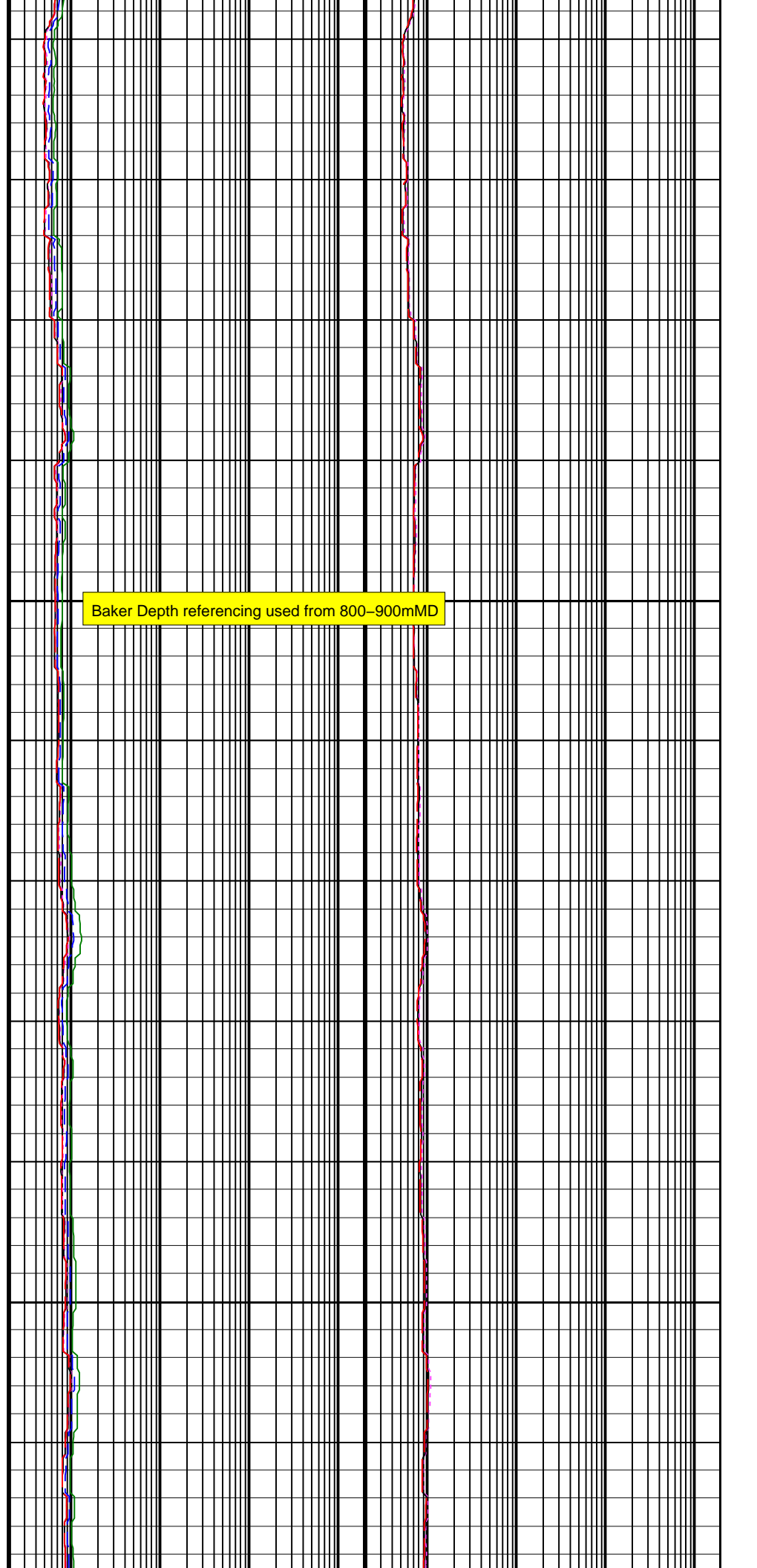
775
TVD

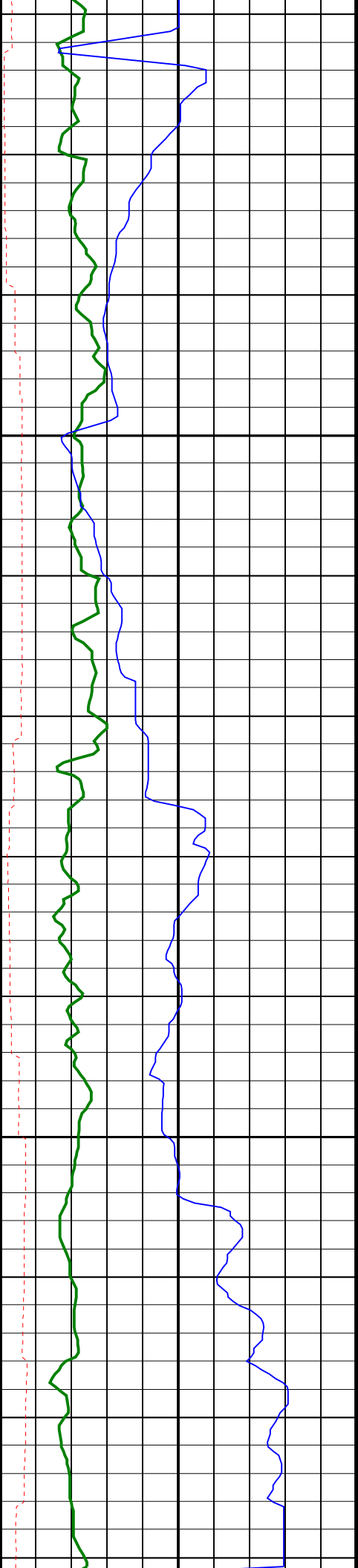


800
TVD

Baker Depth referencing used from 800–900mMD

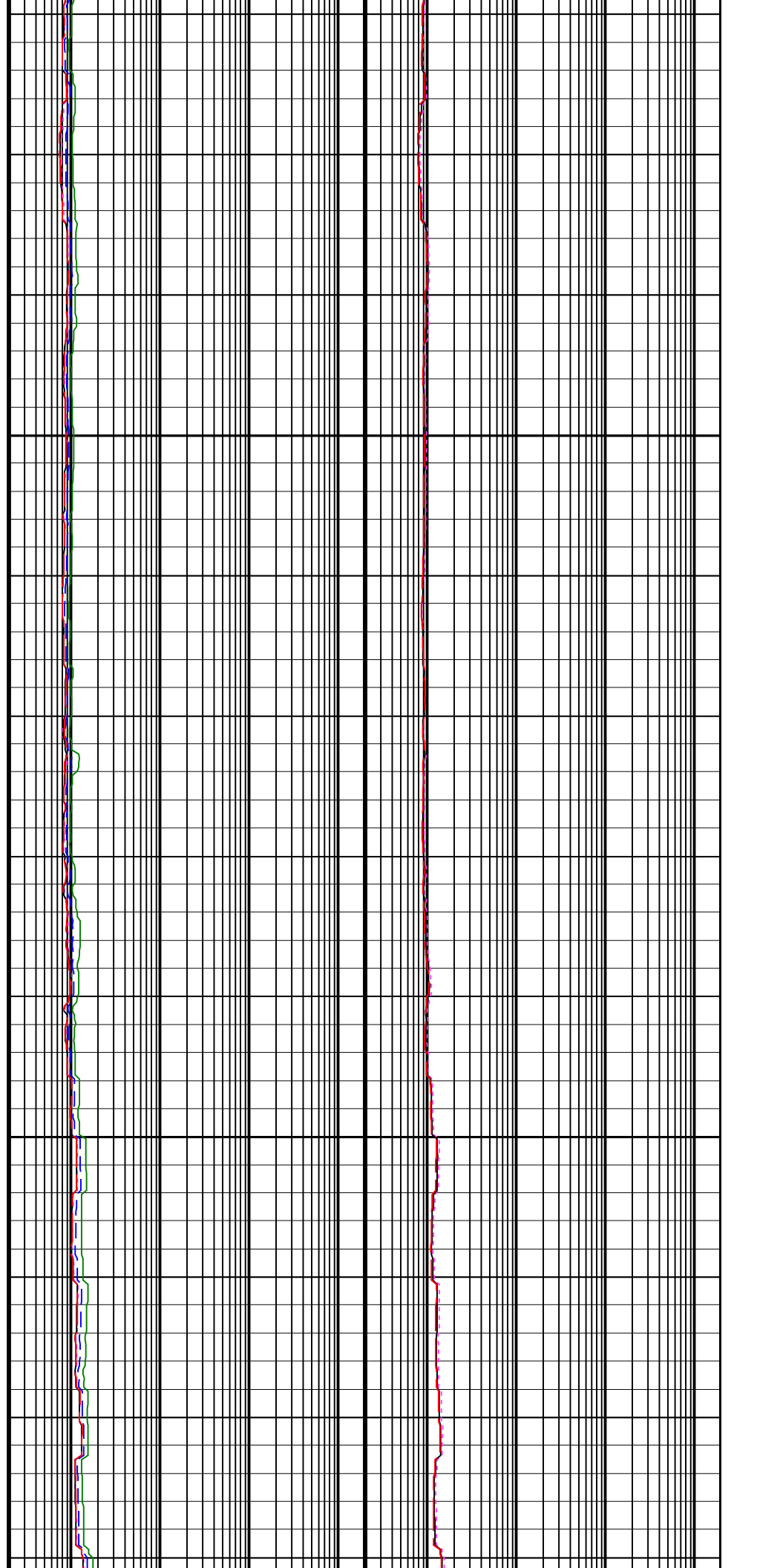
825
TVD

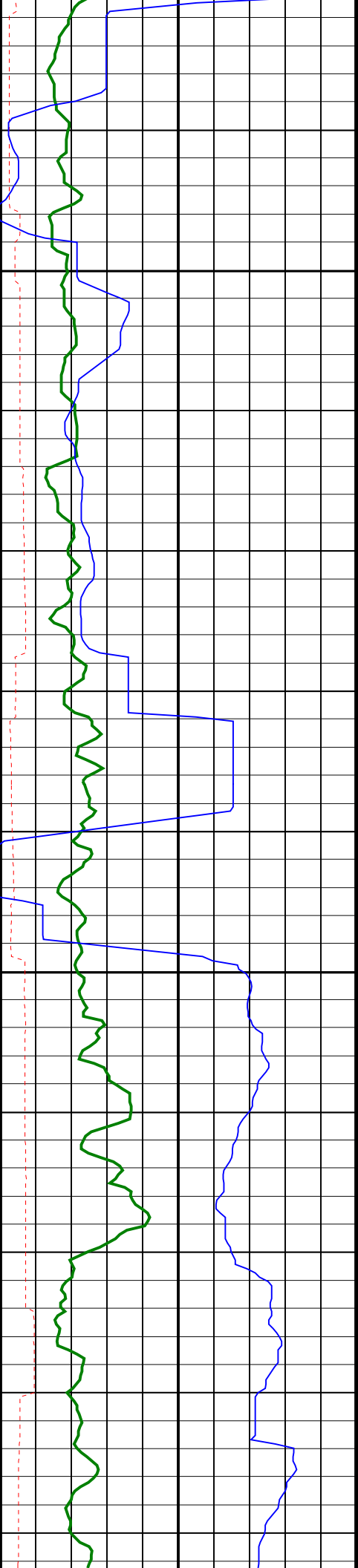




850
TVD

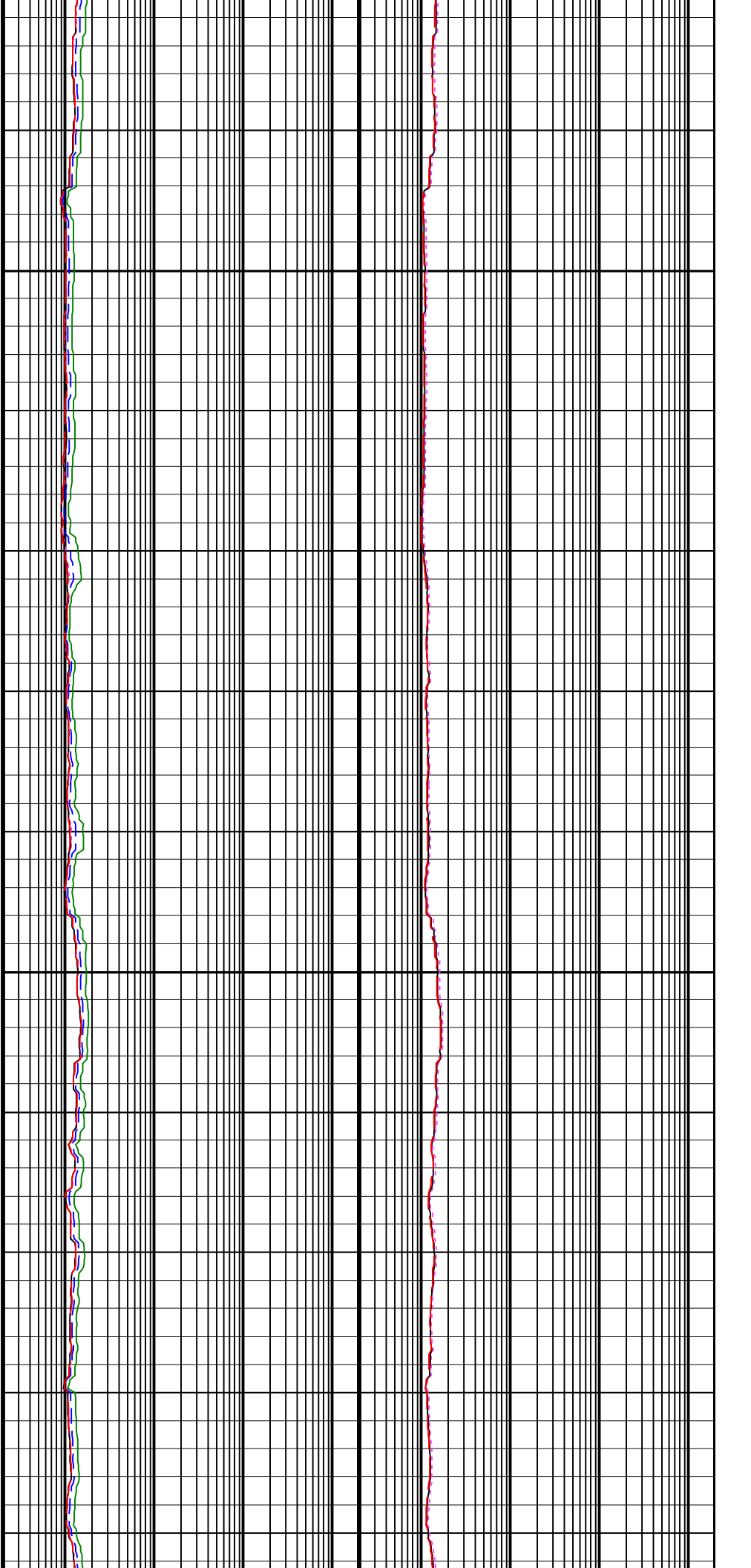
875
TVD

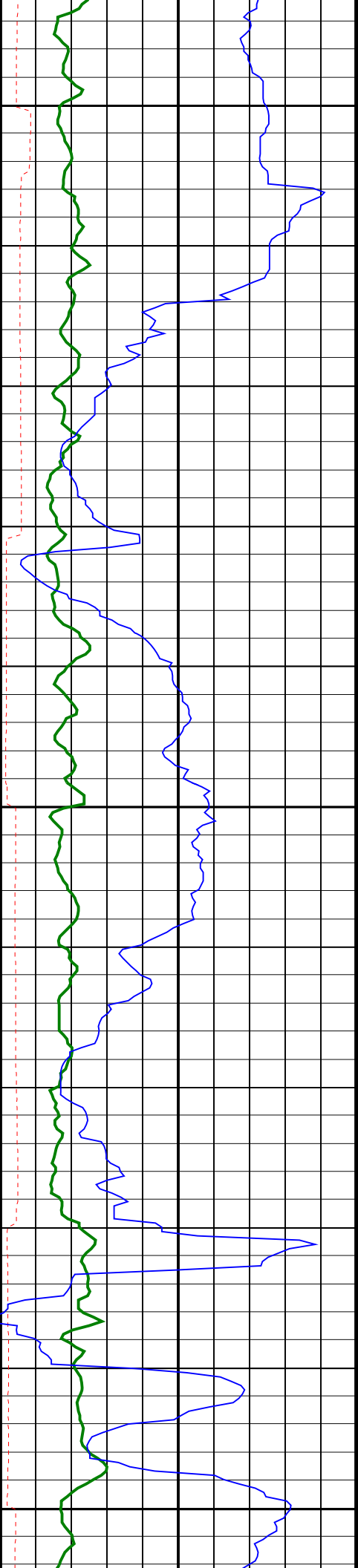




900
TVD

925
TVD

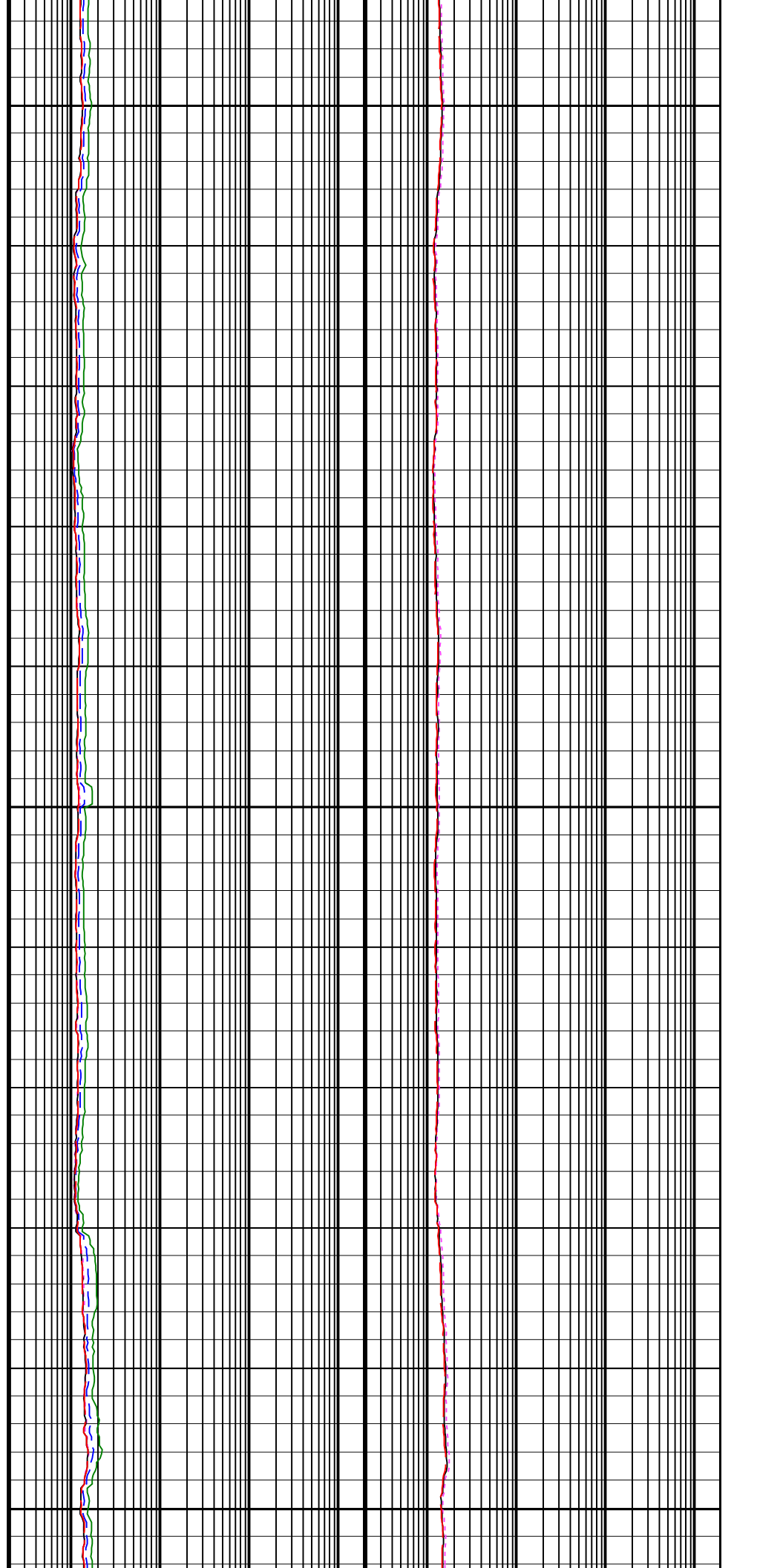


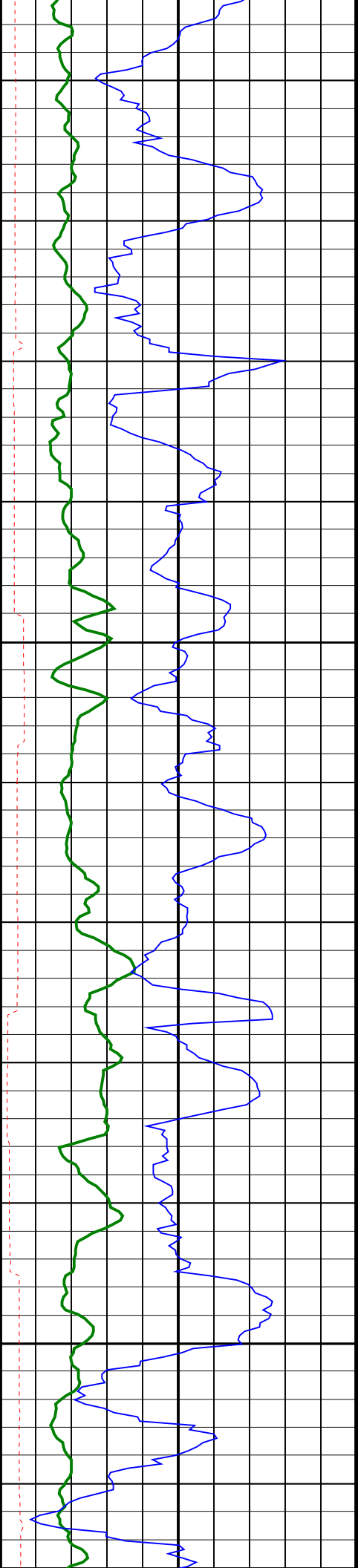


950
TVD

975
TVD

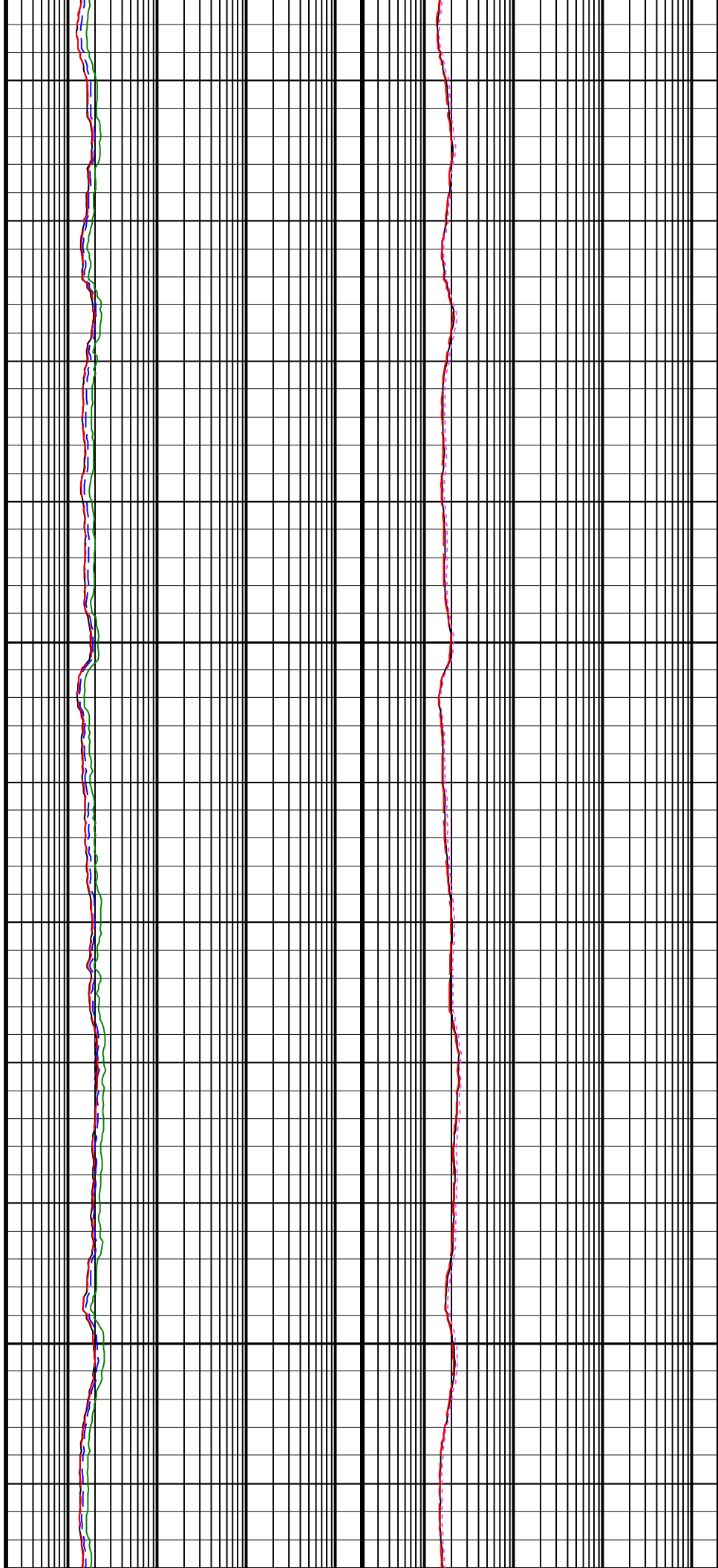
1000
TVD

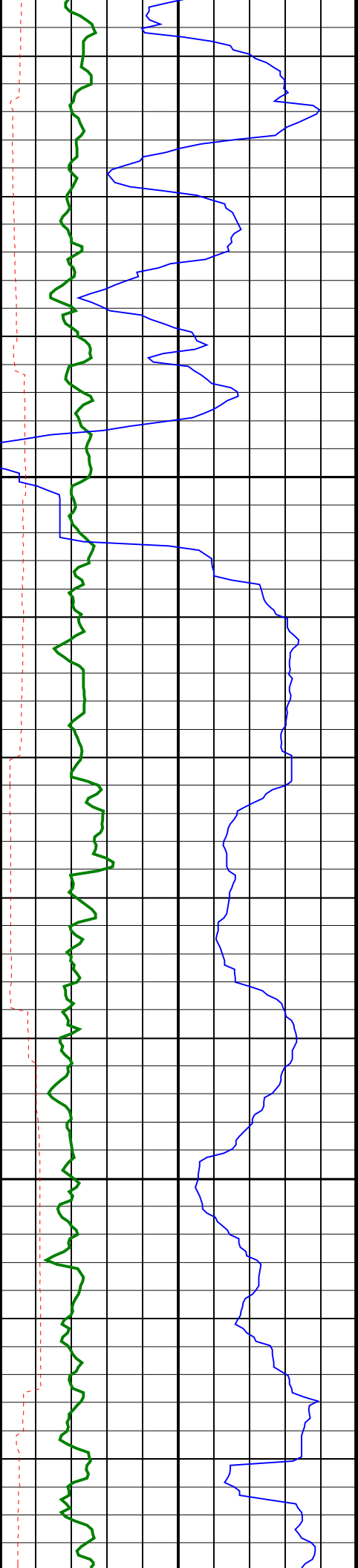




1025
TVD

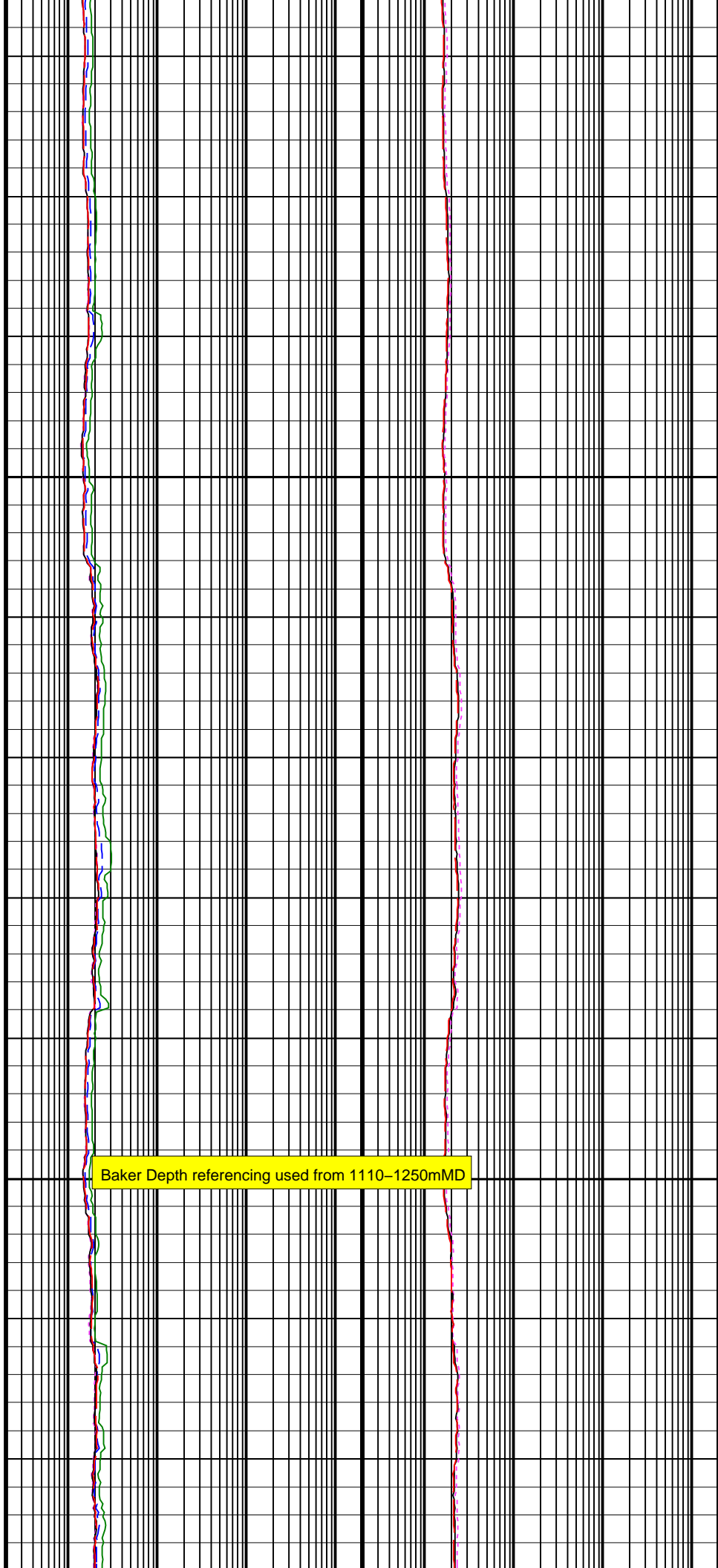
1050
TVD



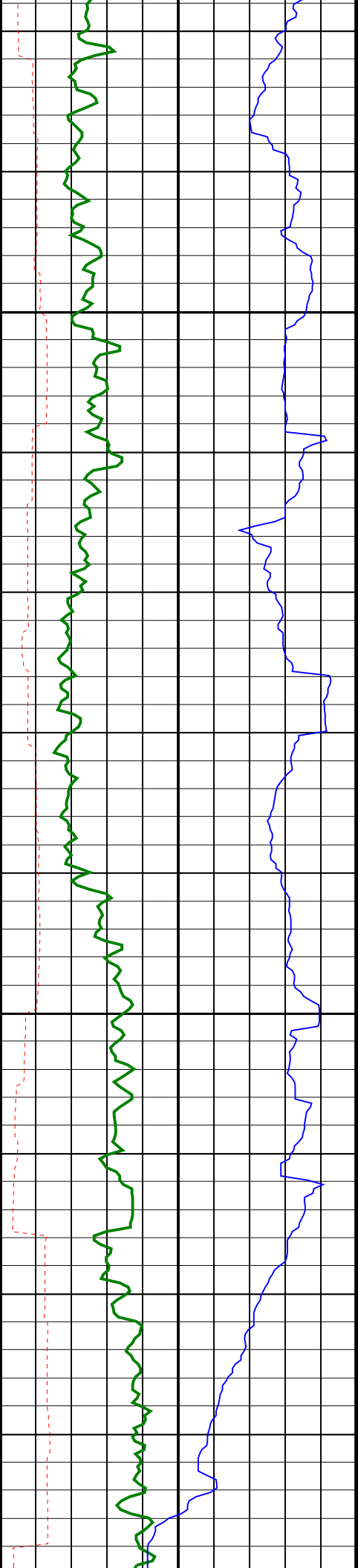


1075
TVD

1100
TVD

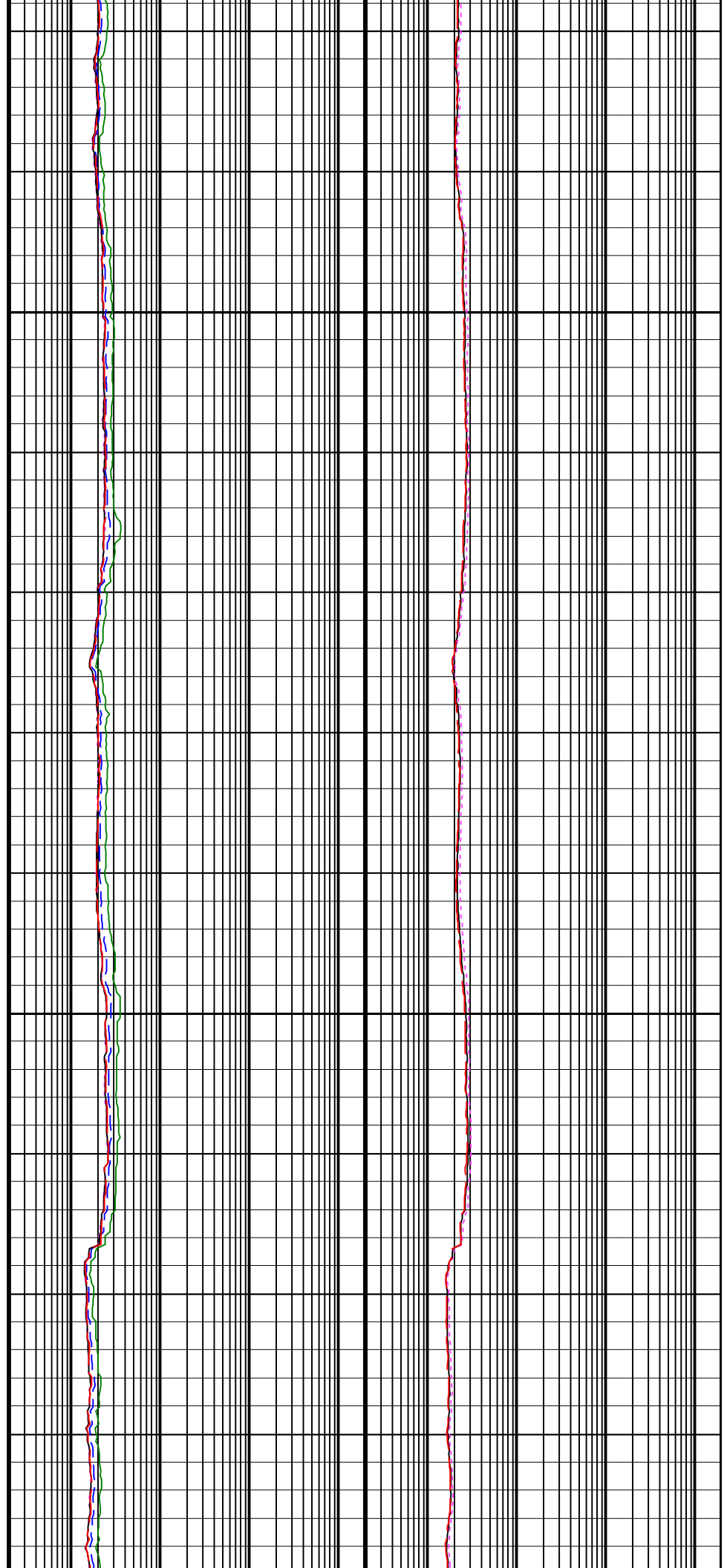


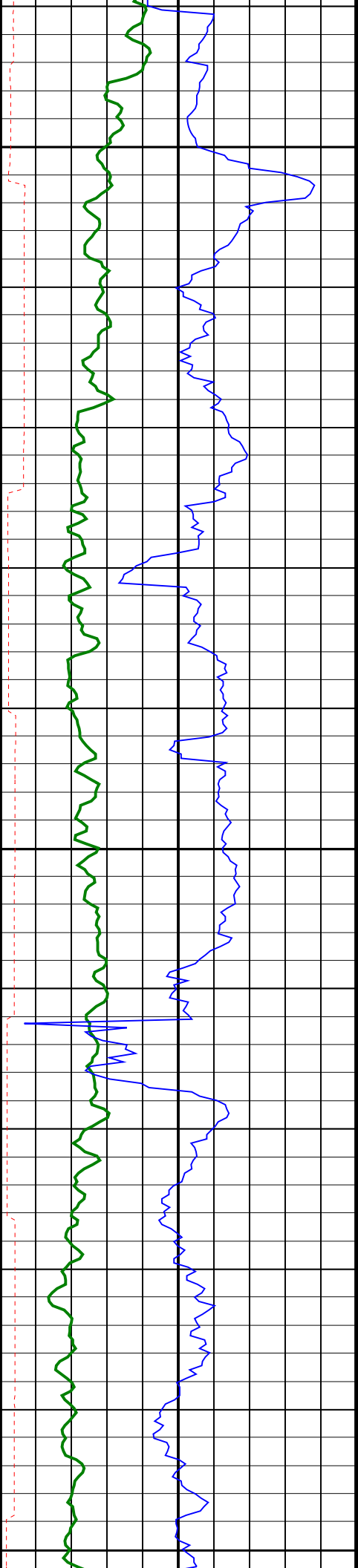
Baker Depth referencing used from 1110-1250mMD



1125
TVD

1150
TVD

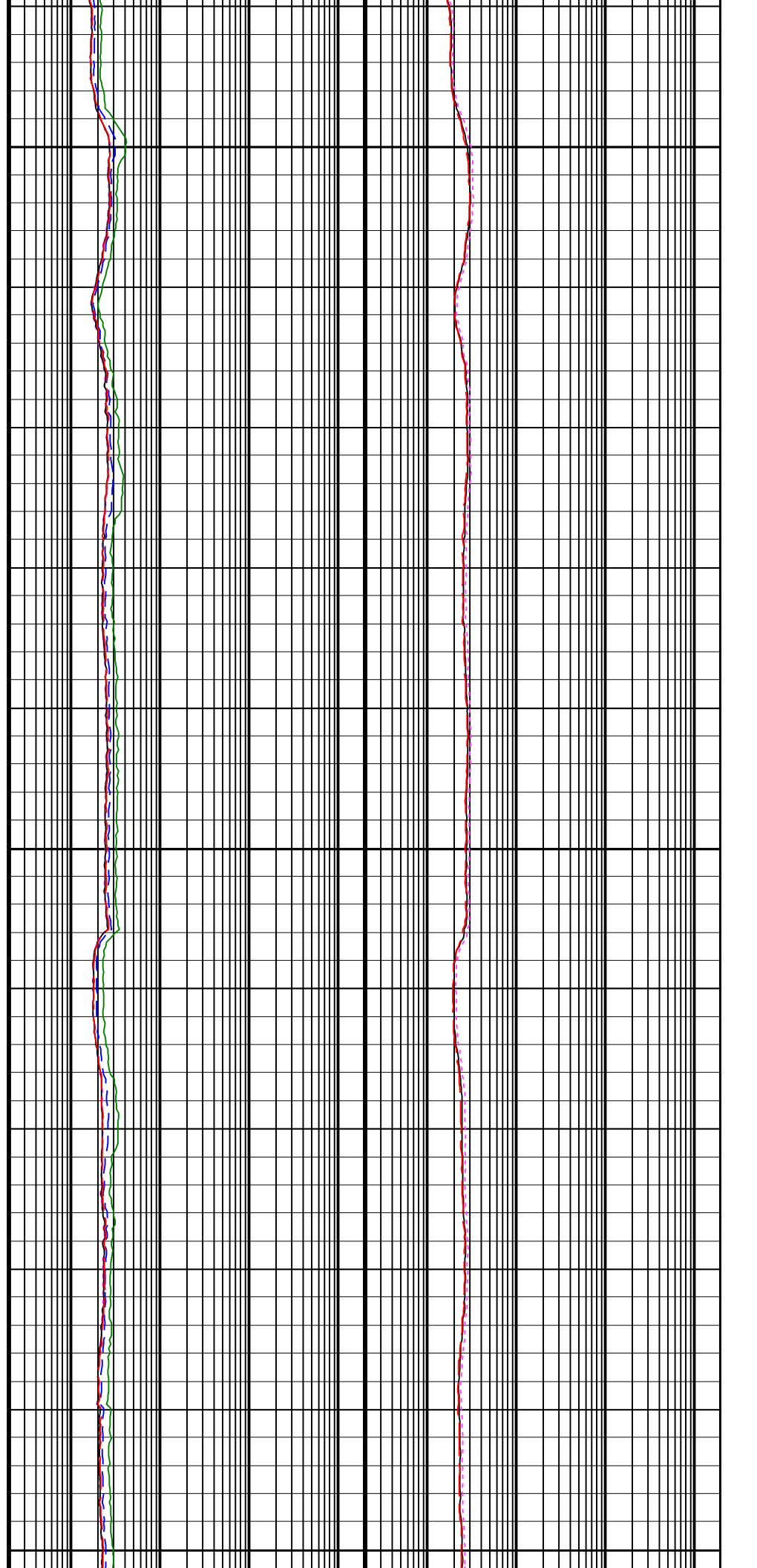


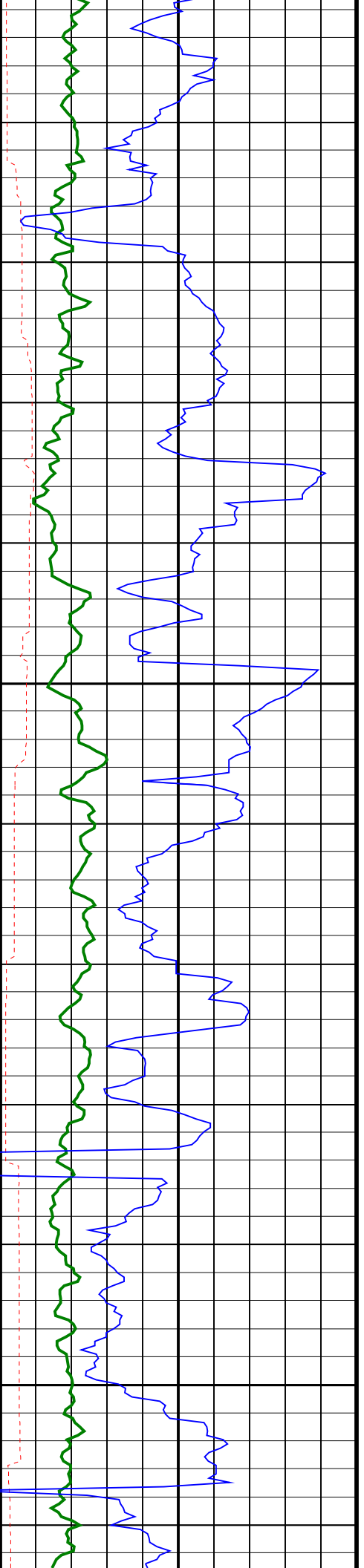


1175
TVD

1200
TVD

1225

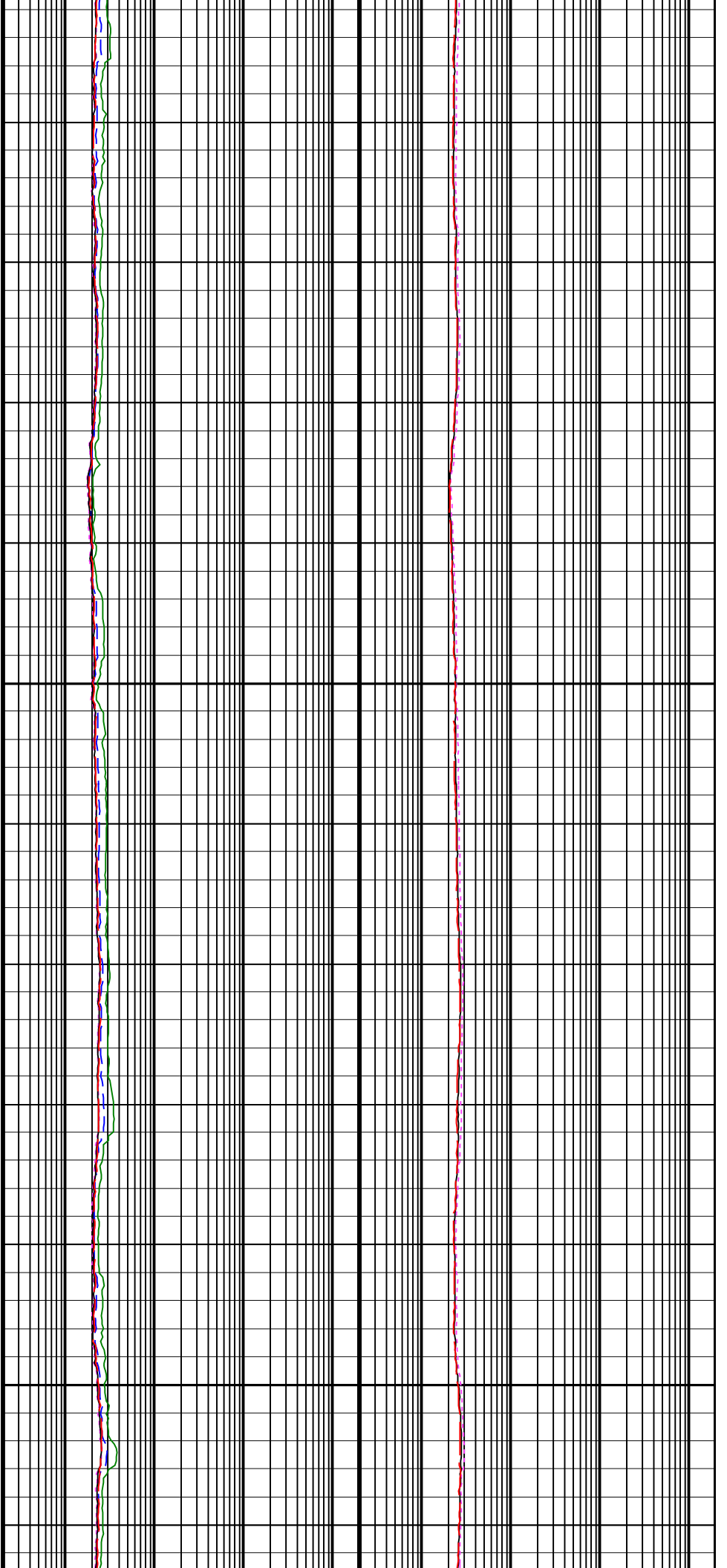


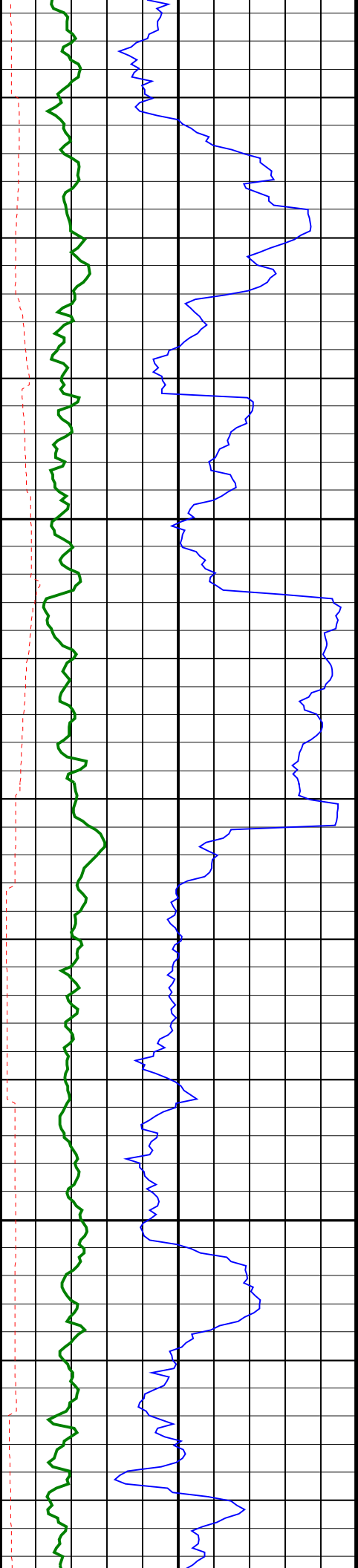


TVD

1250
TVD

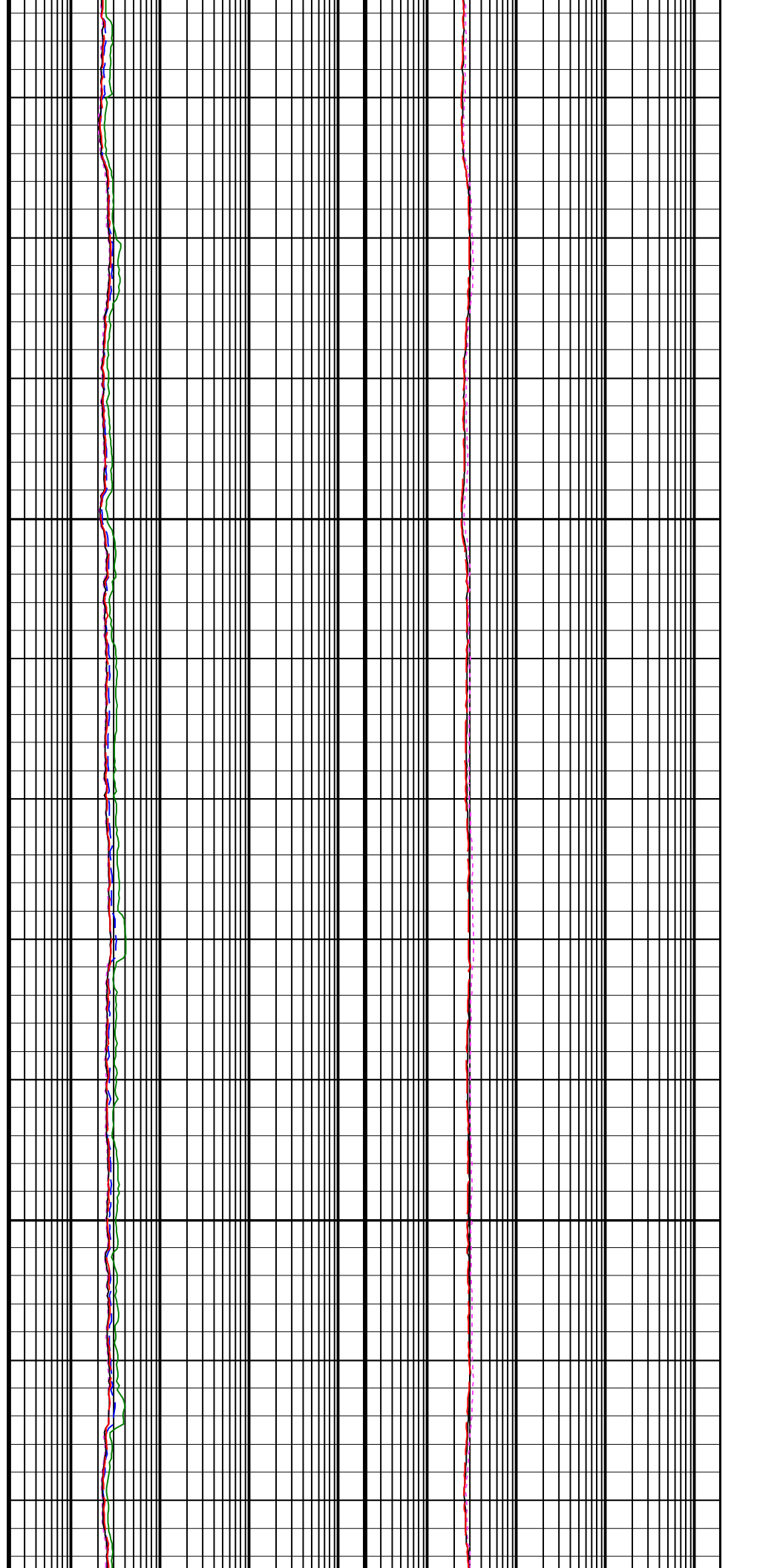
1275
TVD

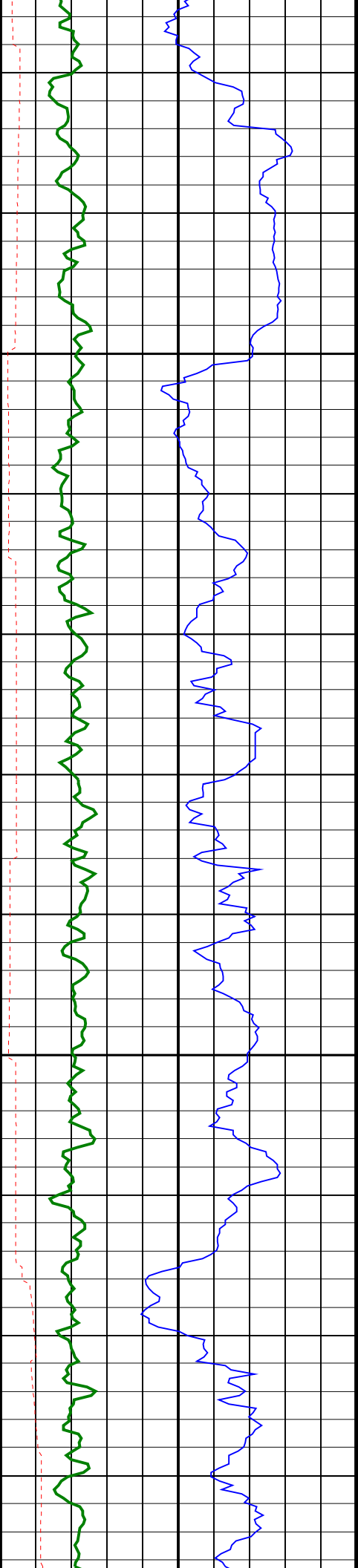




1300
TVD

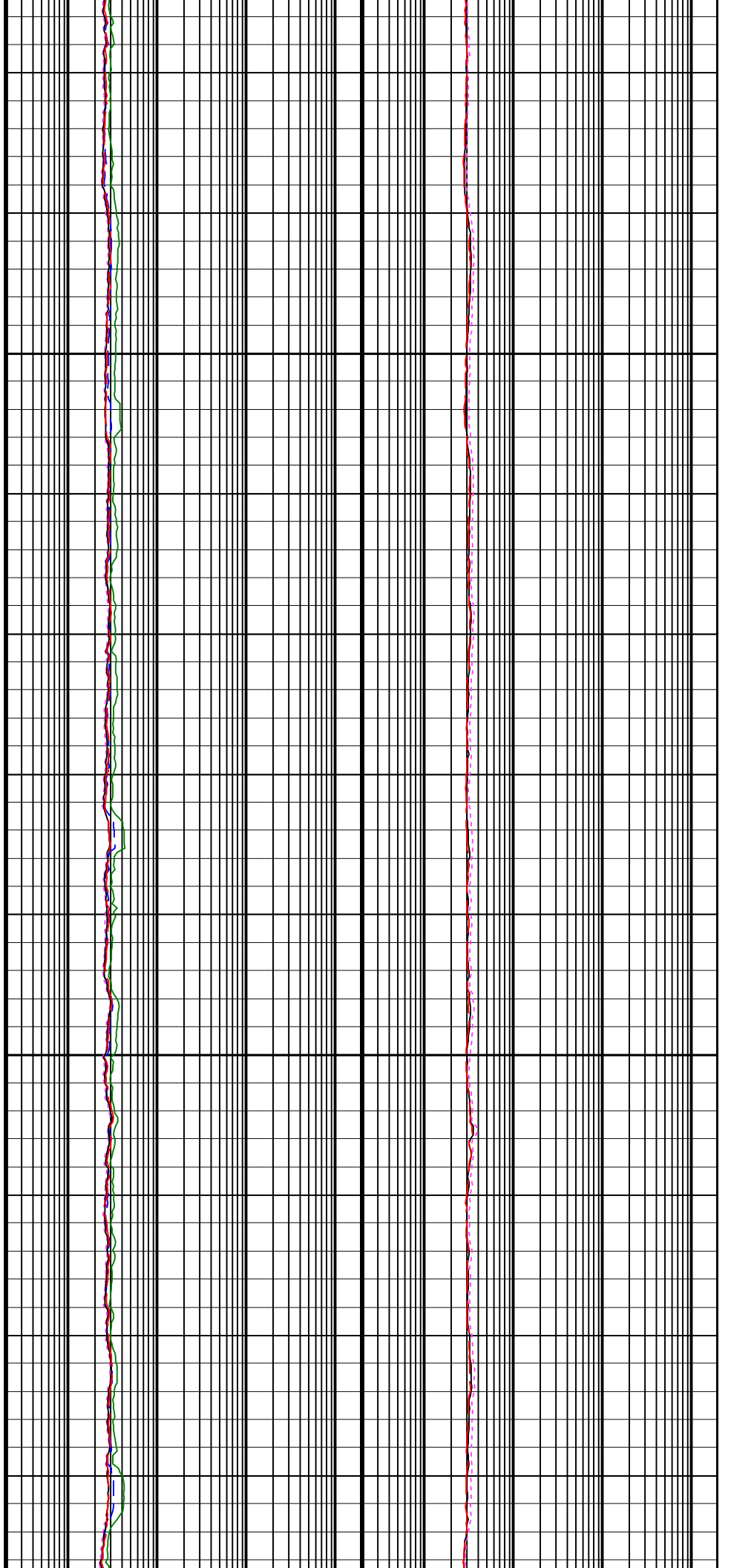
1325
TVD

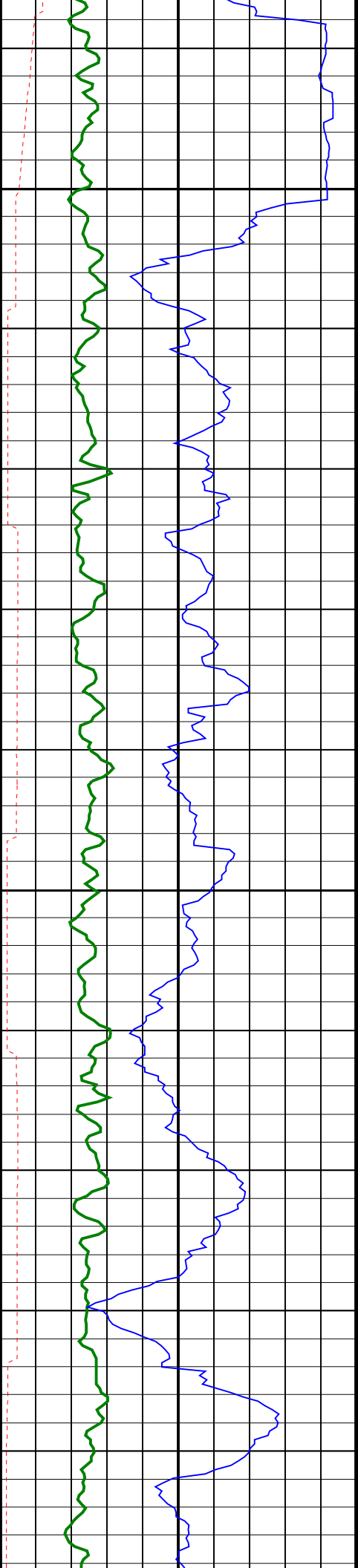




1350
TVD

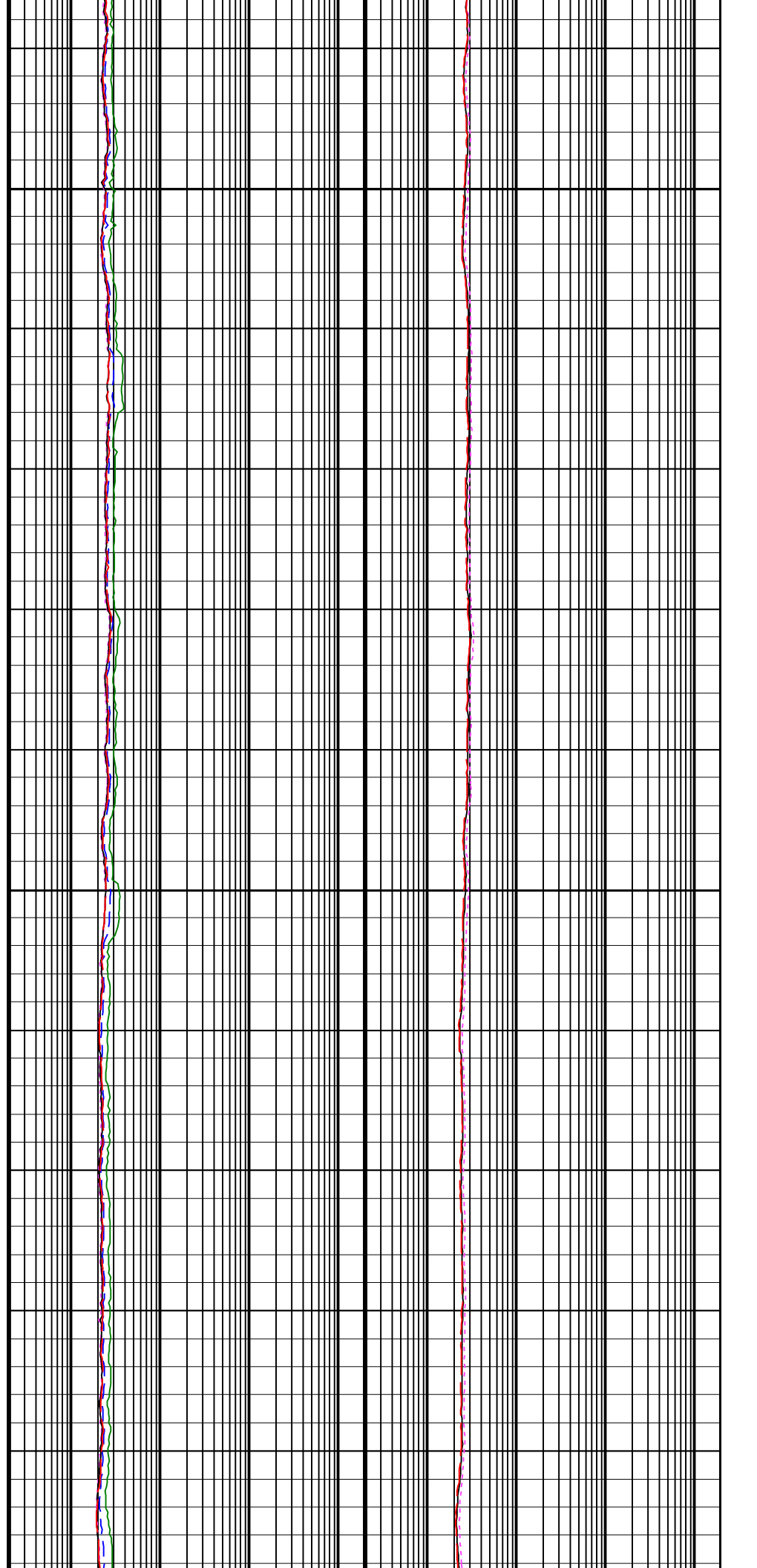
1375
TVD

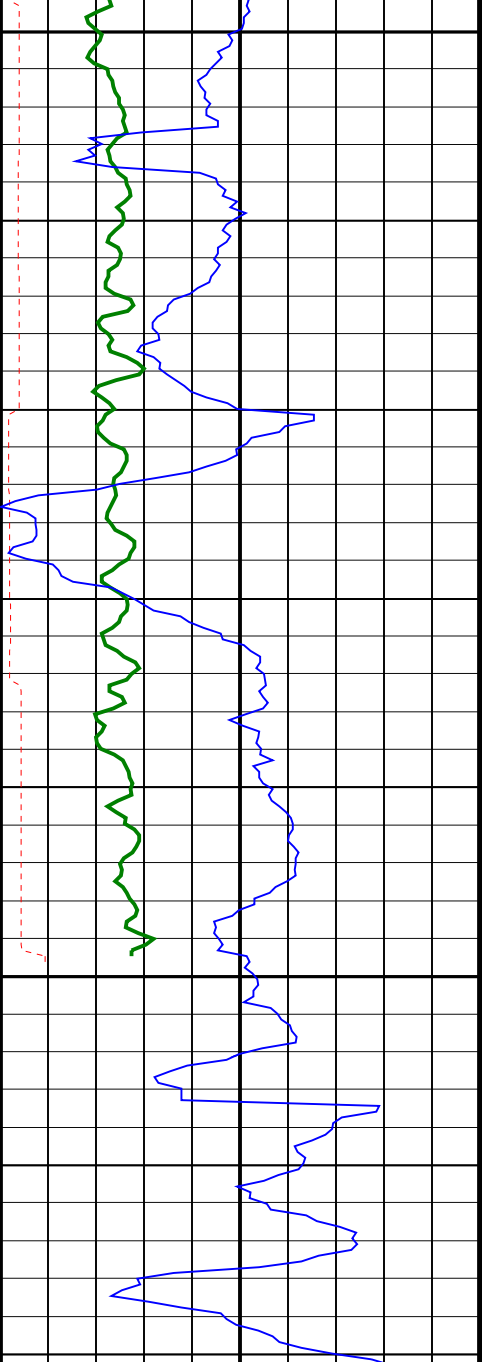




1400
TVD

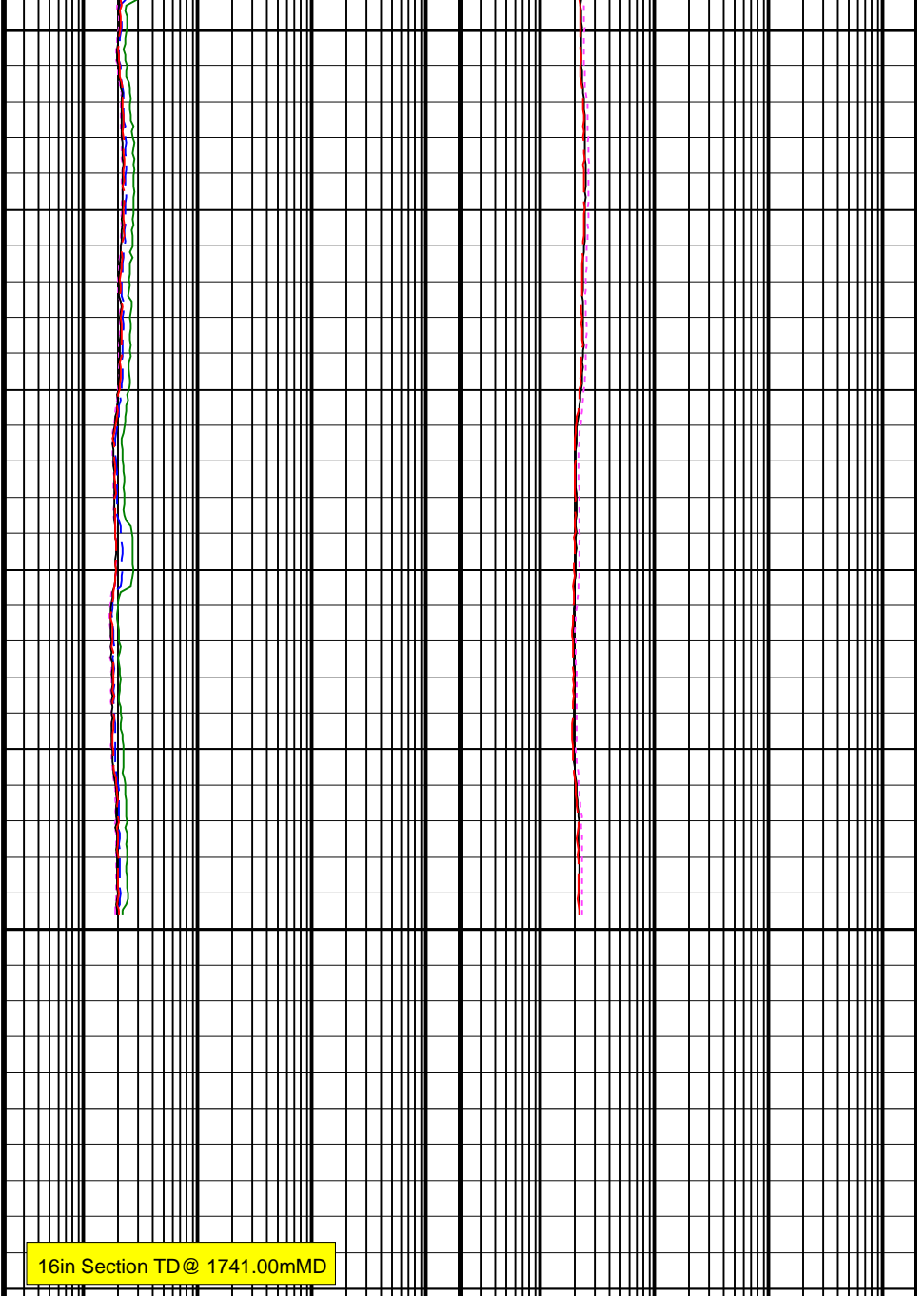
1425
TVD





1450
TVD

1475
TVD



16in Section TD@ 1741.00mMD

ARC Gamma Ray (GR_ARC)		
0	(GAPI)	200
ARC Resistivity Time After Bit (TAB_ARC_RES)		
0	(HR)	10
Rate of Penetration, Averaged over Last 5ft (ROP5_RM)		
200	(M/HR)	0

ARC Phase-Shift Resistivity 16-in. at 2 MHz (P16H)		
0.2	(OHMM)	2000
ARC Phase-Shift Resistivity 22-in. at 2 MHz (P22H)		
0.2	(OHMM)	2000
ARC Phase-Shift Resistivity 28-in. at 2 MHz (P28H)		
0.2	(OHMM)	2000
ARC Phase-Shift Resistivity 34-in. at 2 MHz (P34H)		
0.2	(OHMM)	2000
ARC Phase-Shift Resistivity 40-in. at 2 MHz (P40H)		
0.2	(OHMM)	2000

ARC Attenuation Resistivity 28-in. at 2 MHz (A28H)		
0.2	(OHMM)	2000
ARC Attenuation Resistivity 34-in. at 2 MHz (A34H)		
0.2	(OHMM)	2000
ARC Attenuation Resistivity 40-in. at 2 MHz (A40H)		
0.2	(OHMM)	2000

