

Elver-1_VISION Resistivity RM 200MD

Format: ARC_200MD

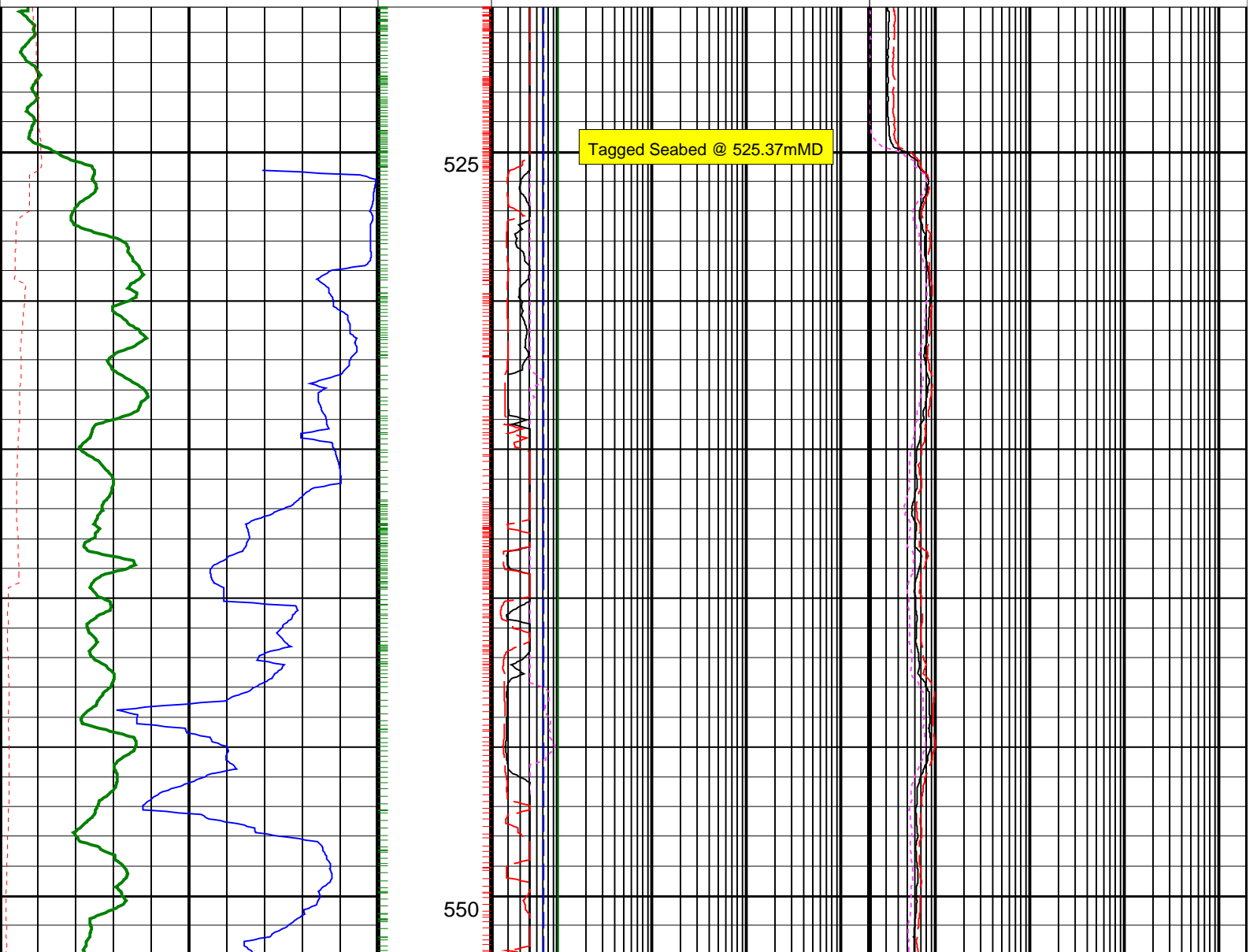
Vertical Scale: 1:200

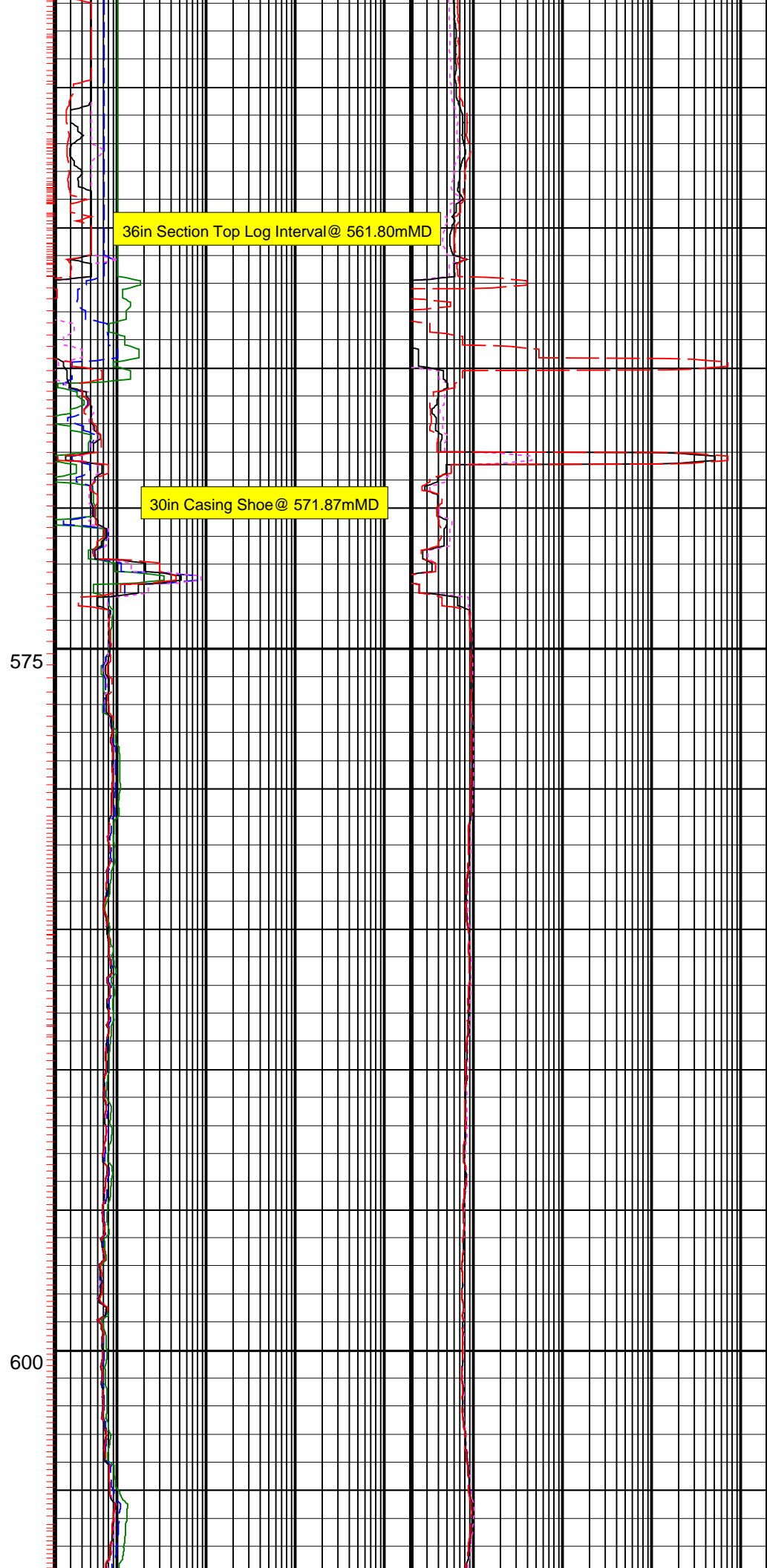
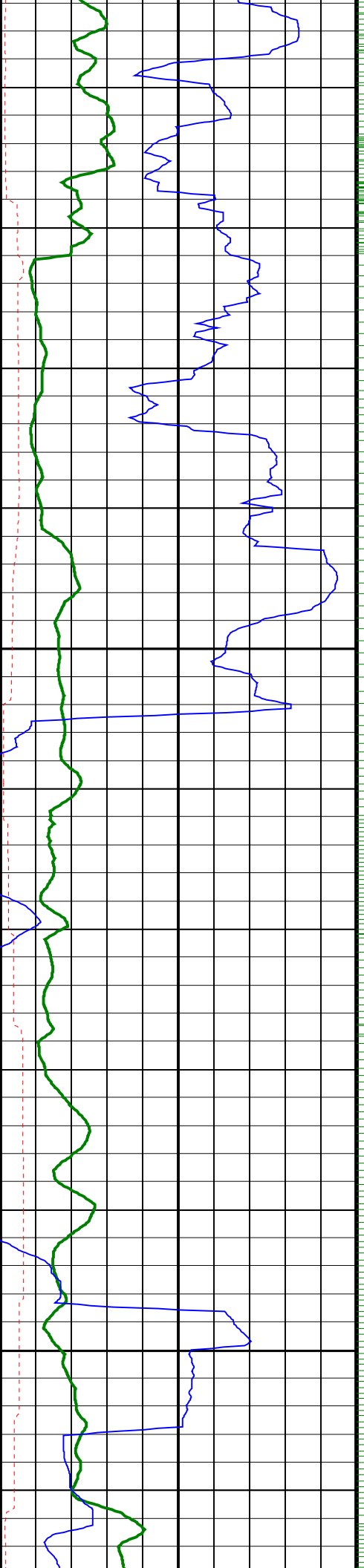
Graphics File Created: 23-Dec-2008 18:42

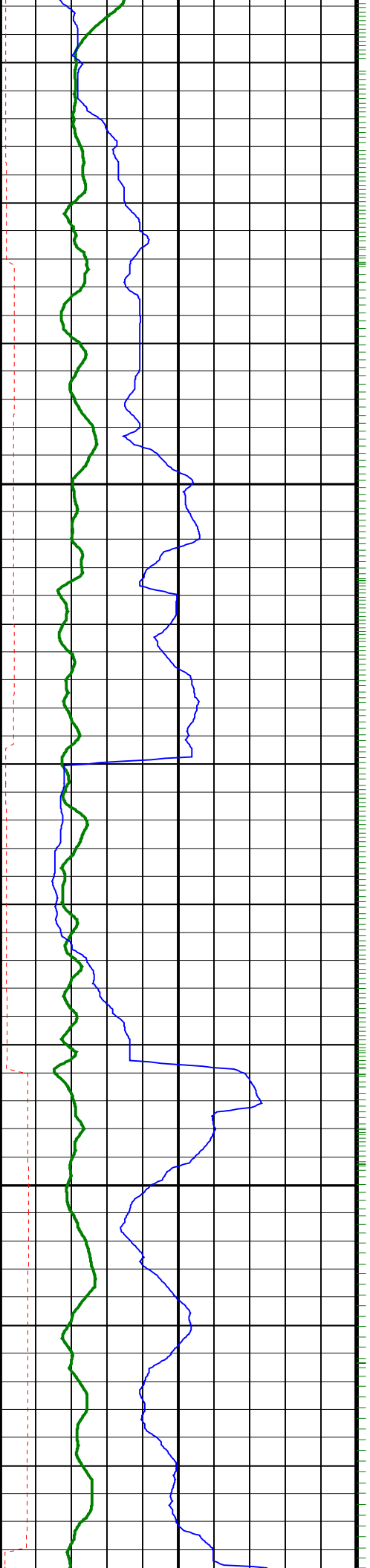
PIP SUMMARY

- └ ARC Gamma Ray Samples
- └ ARC Resistivity Samples

	ARC Phase-Shift Resistivity 40-in. at 2 MHz (P40H)			
	0.2	(OHMM)	2000	
	ARC Phase-Shift Resistivity 34-in. at 2 MHz (P34H)			
	0.2	(OHMM)	2000	
Rate of Penetration, Averaged over Last 5ft (ROP5_RM)	ARC Phase-Shift Resistivity 28-in. at 2 MHz (P28H)			ARC Attenuation Resistivity 40-in. at 2 MHz (A40H)
200 (M/HR)	0.2	(OHMM)	2000	0.2 (OHMM) 2000
ARC Resistivity Time After Bit (TAB_ARC_RES)	ARC Phase-Shift Resistivity 22-in. at 2 MHz (P22H)			ARC Attenuation Resistivity 34-in. at 2 MHz (A34H)
0 (HR) 10	0.2	(OHMM)	2000	0.2 (OHMM) 2000
ARC Gamma Ray (GR_ARC)	ARC Phase-Shift Resistivity 16-in. at 2 MHz (P16H)			ARC Attenuation Resistivity 28-in. at 2 MHz (A28H)
0 (GAPI) 200	0.2	(OHMM)	2000	0.2 (OHMM) 2000

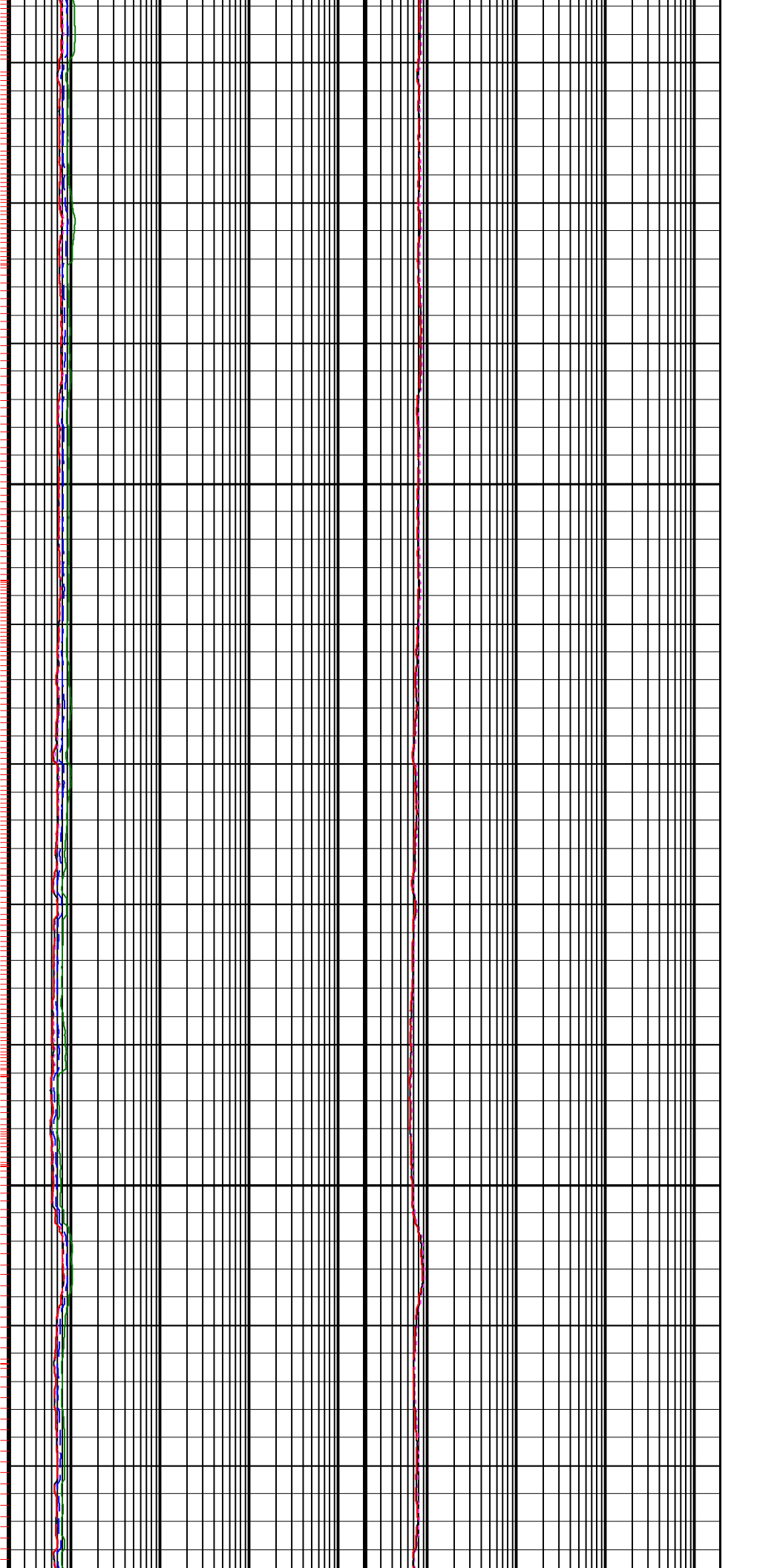


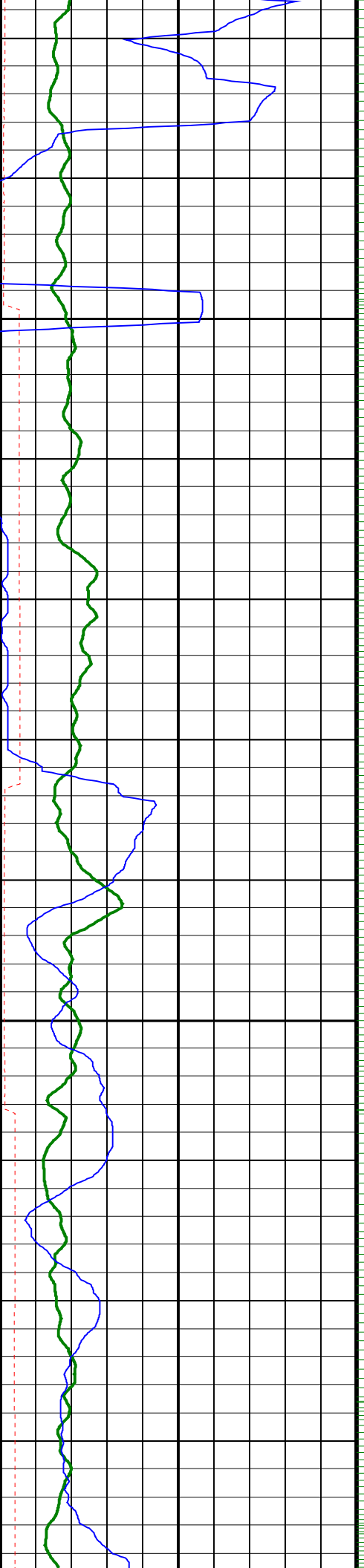




625

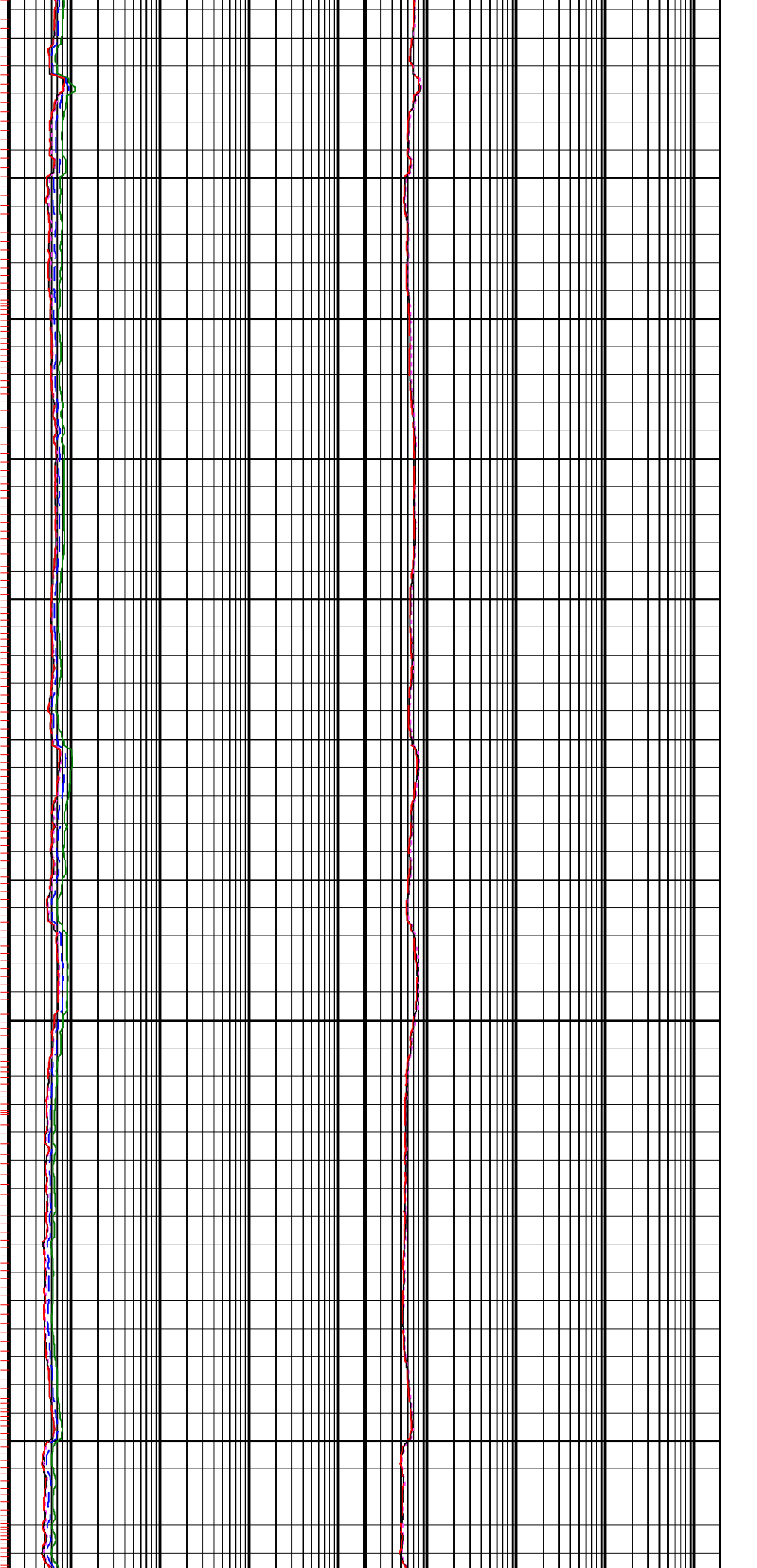
650

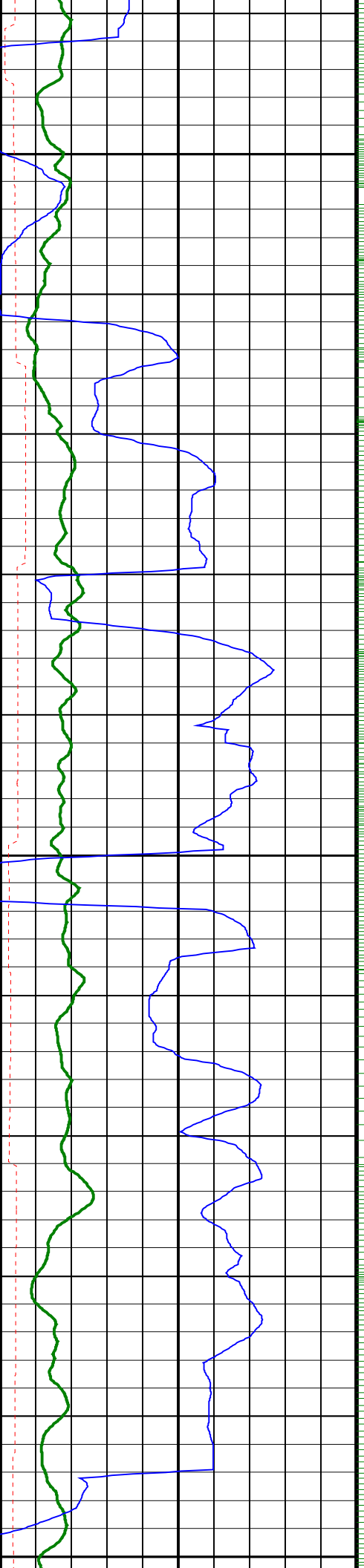




675

700

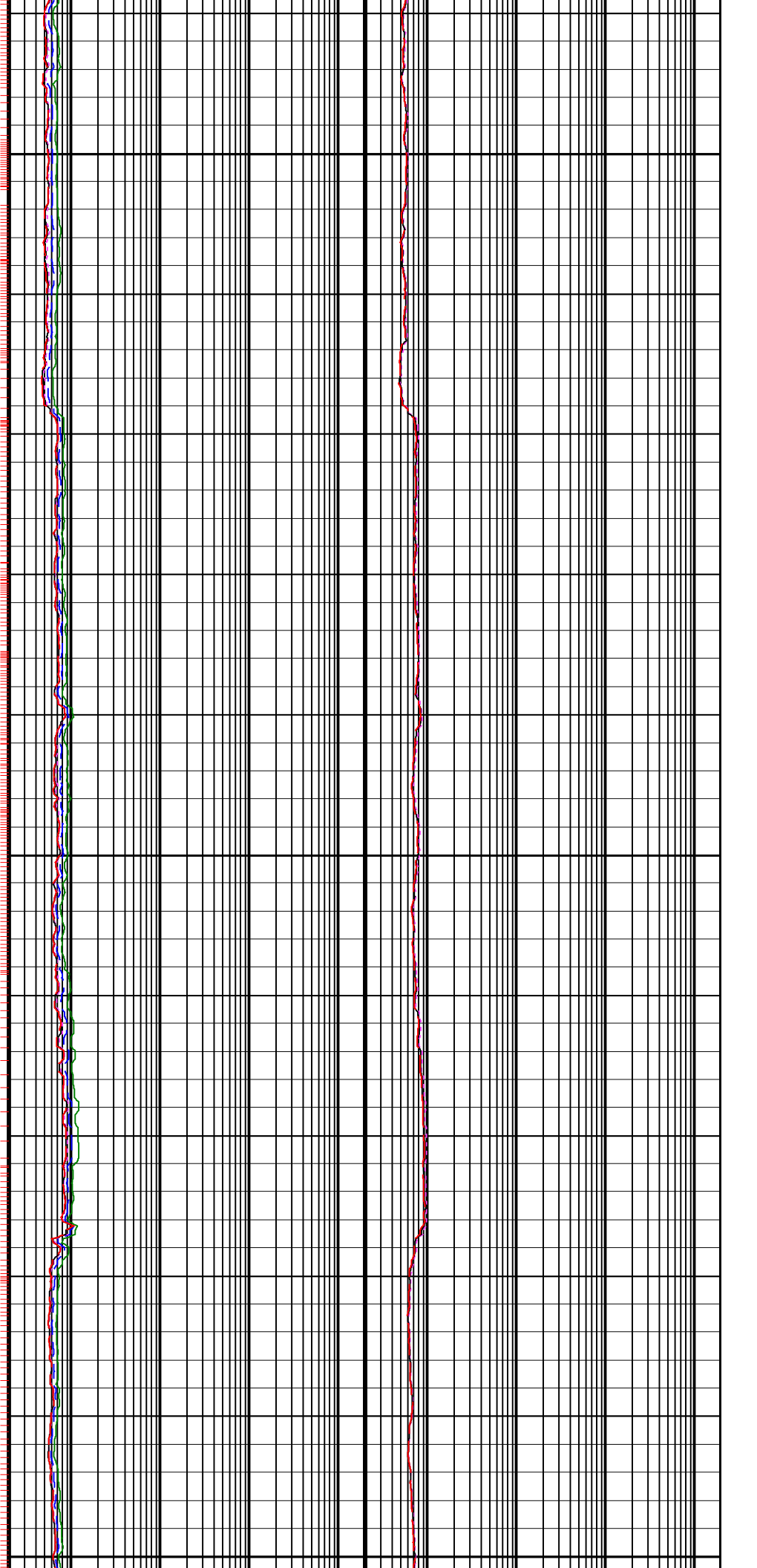


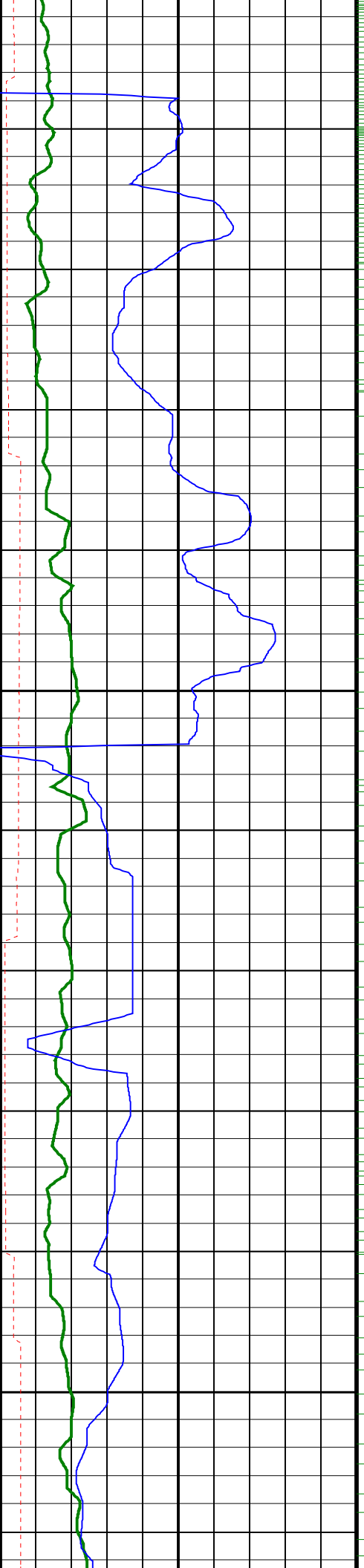


725

750

775



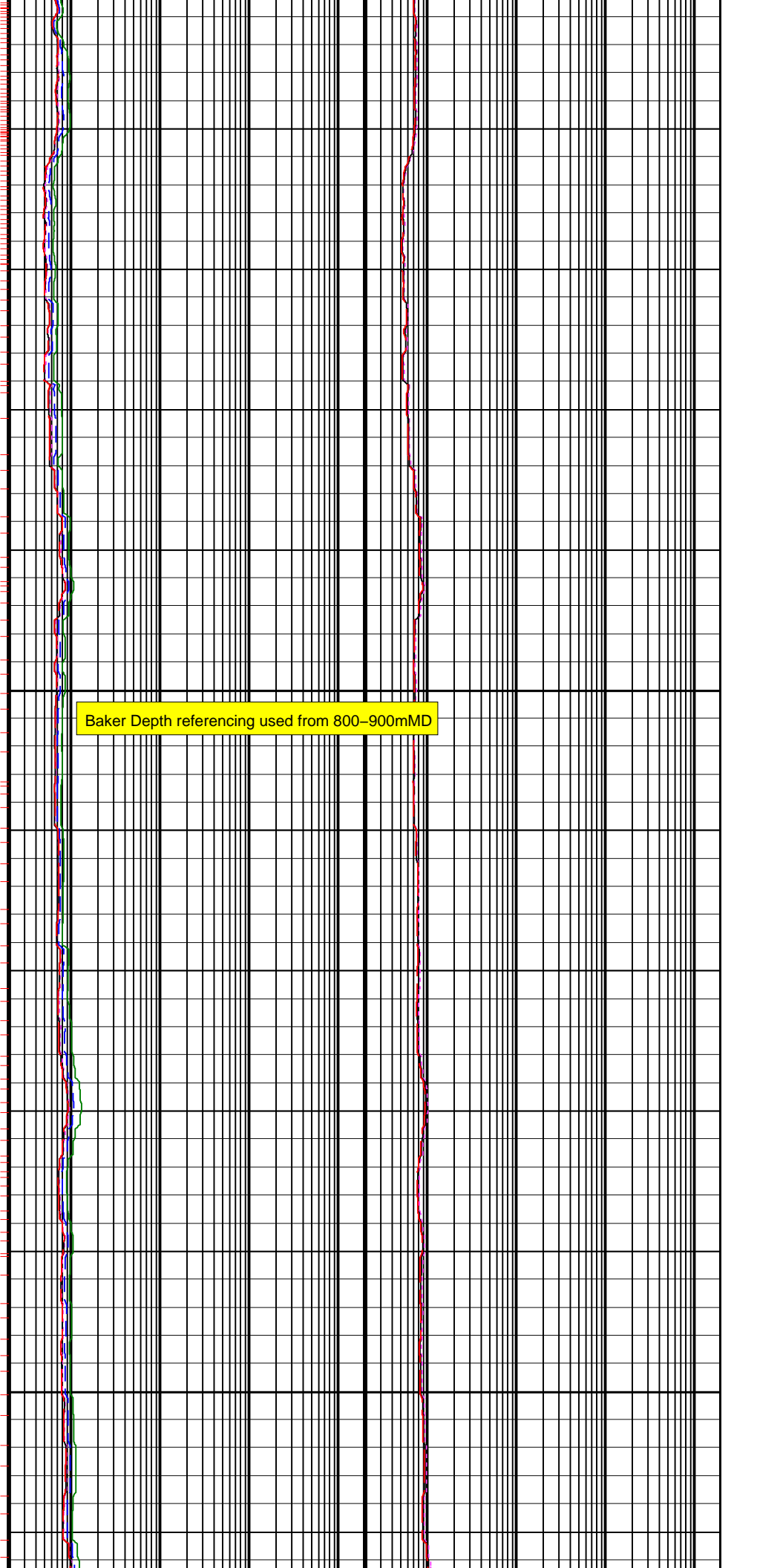


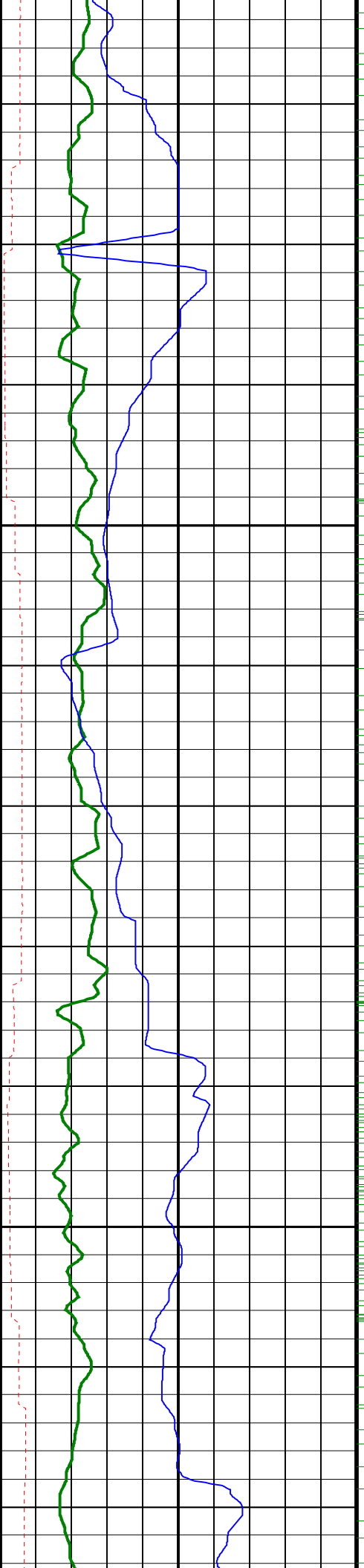
775

800

825

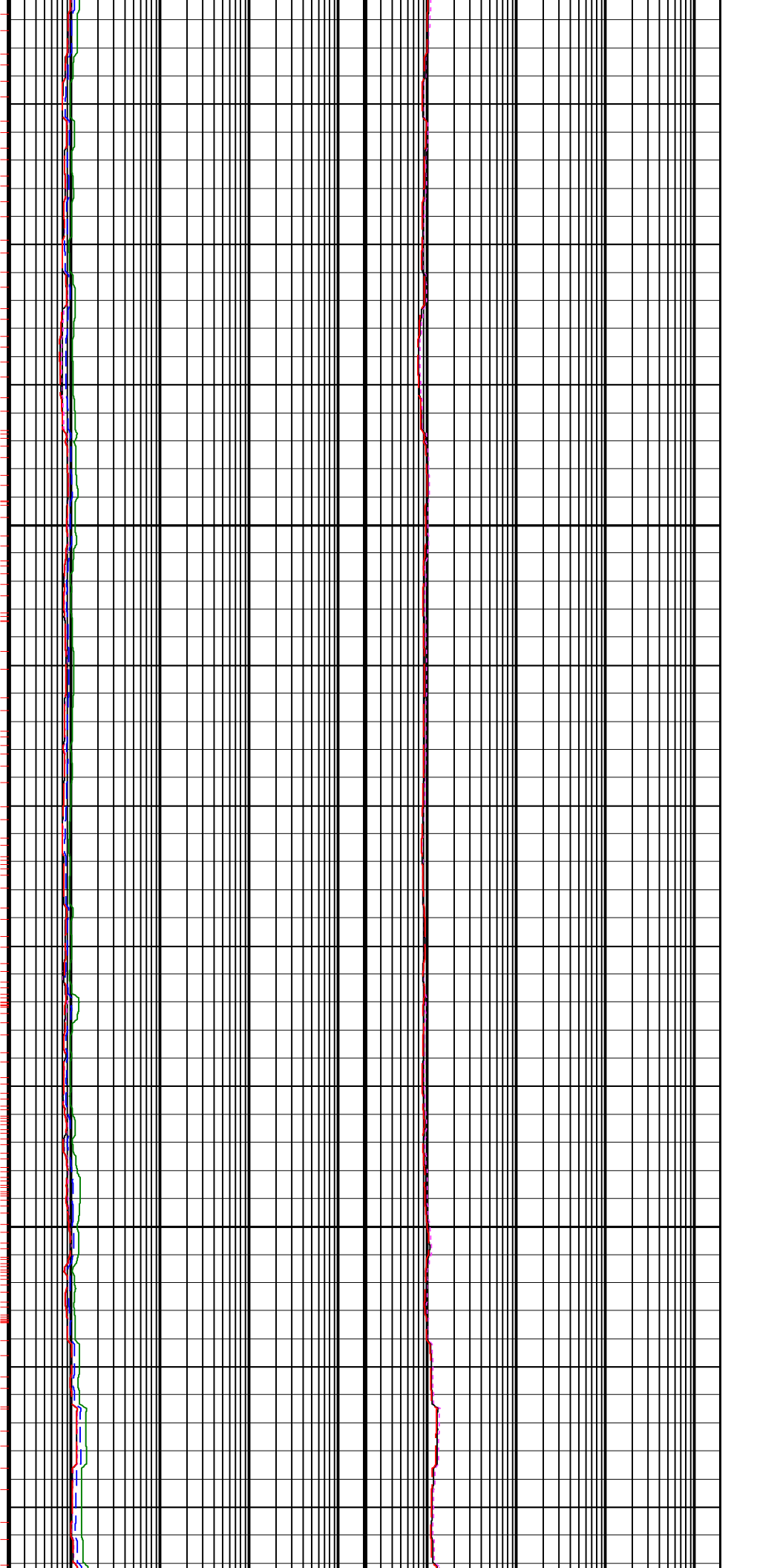
Baker Depth referencing used from 800–900mMD

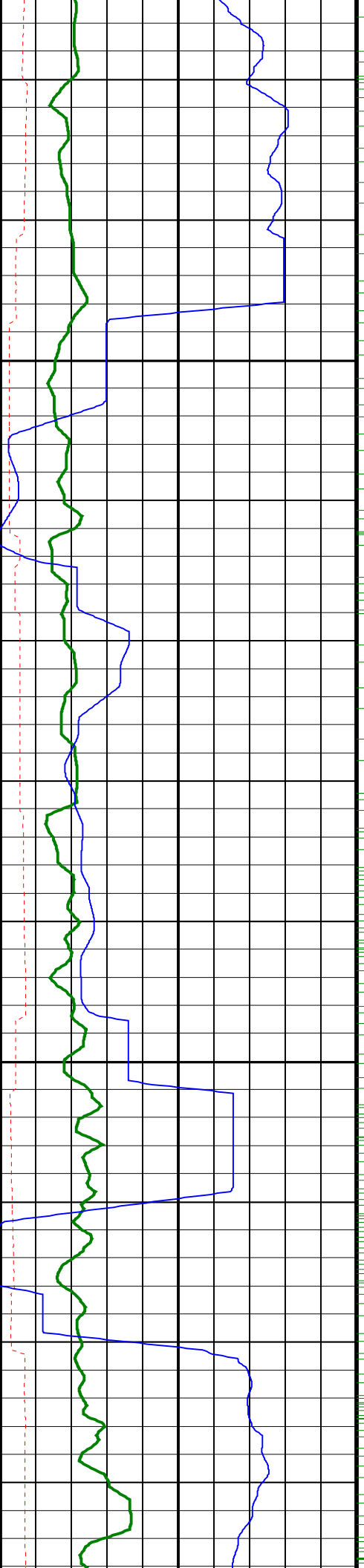




850

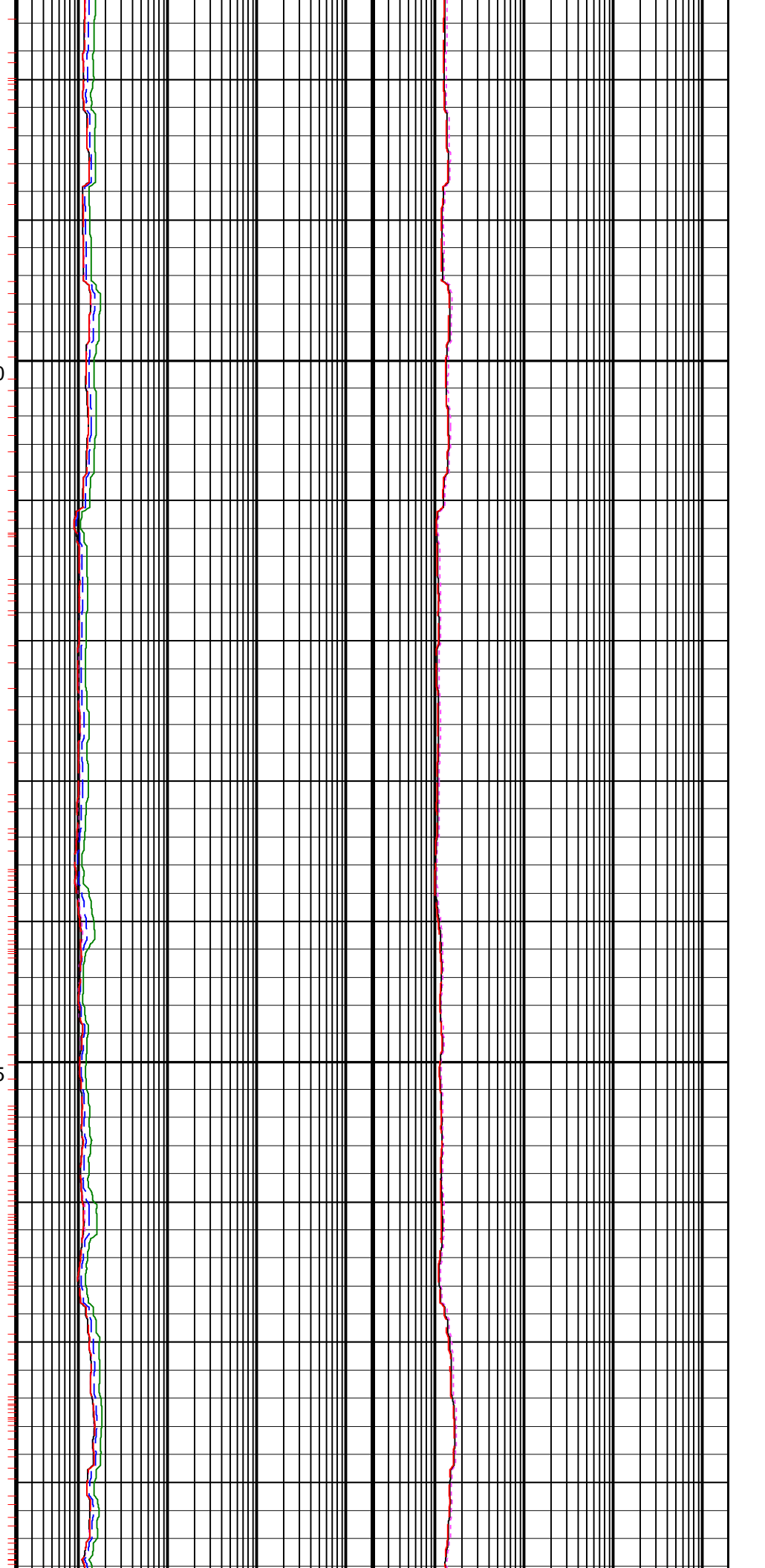
875

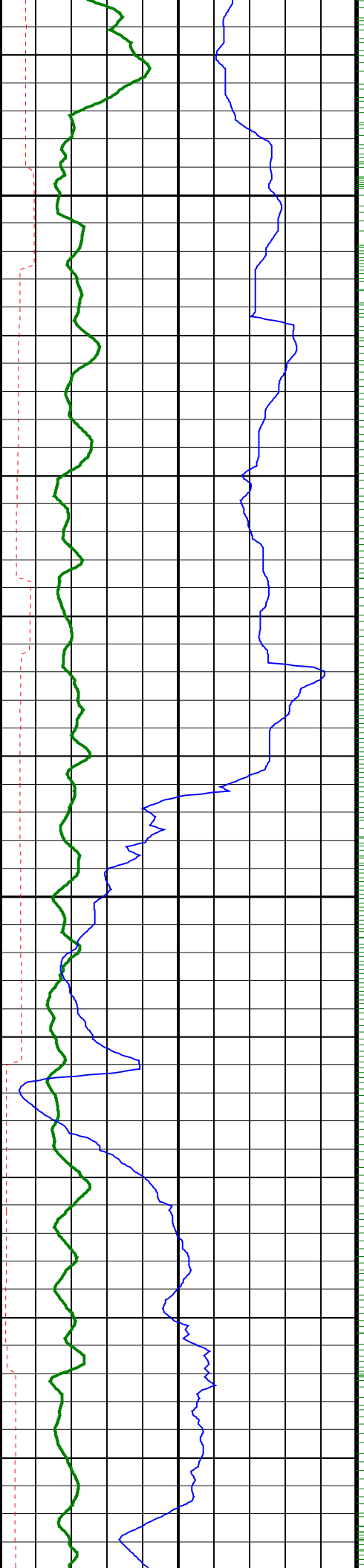




900

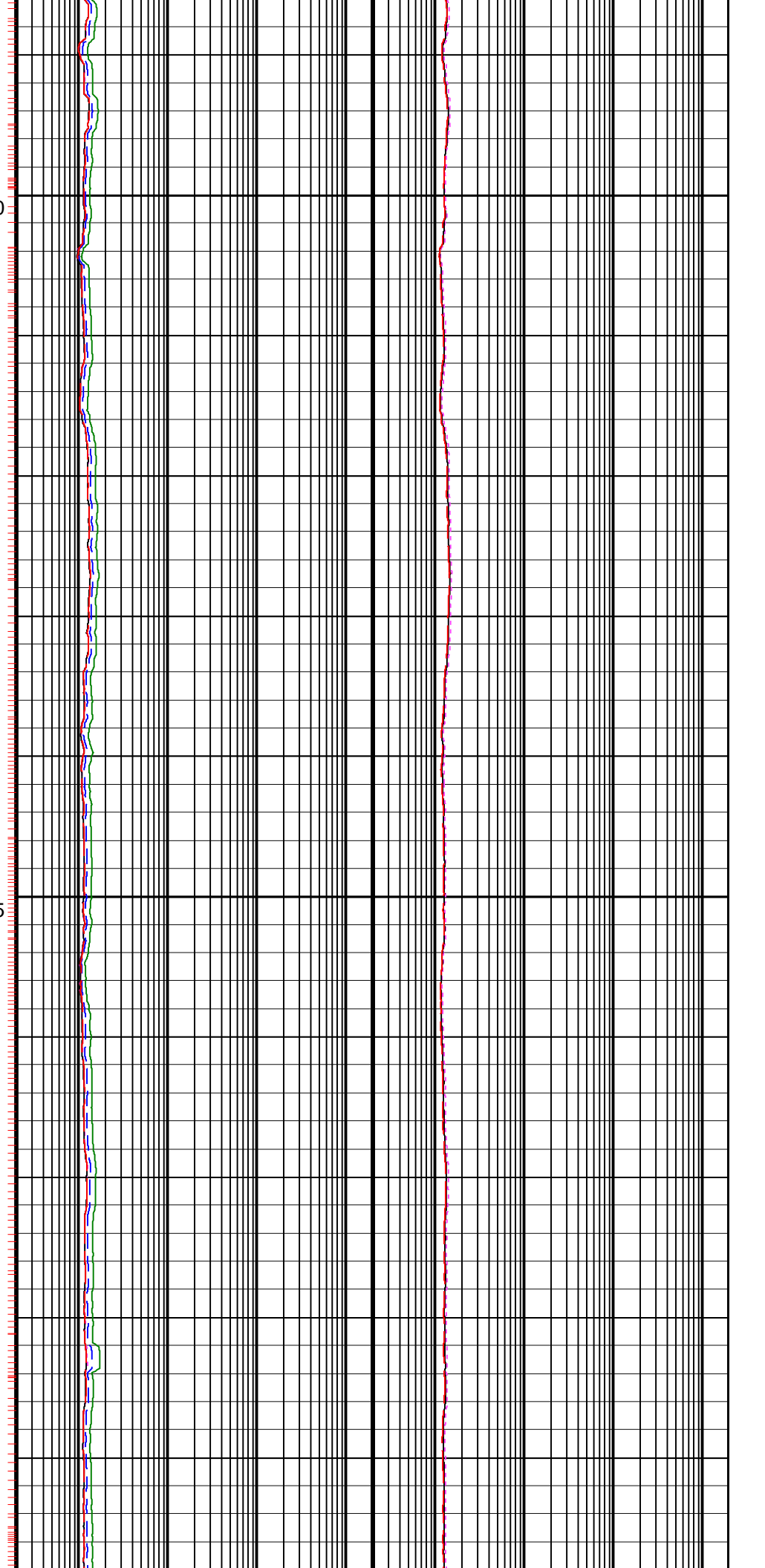
925

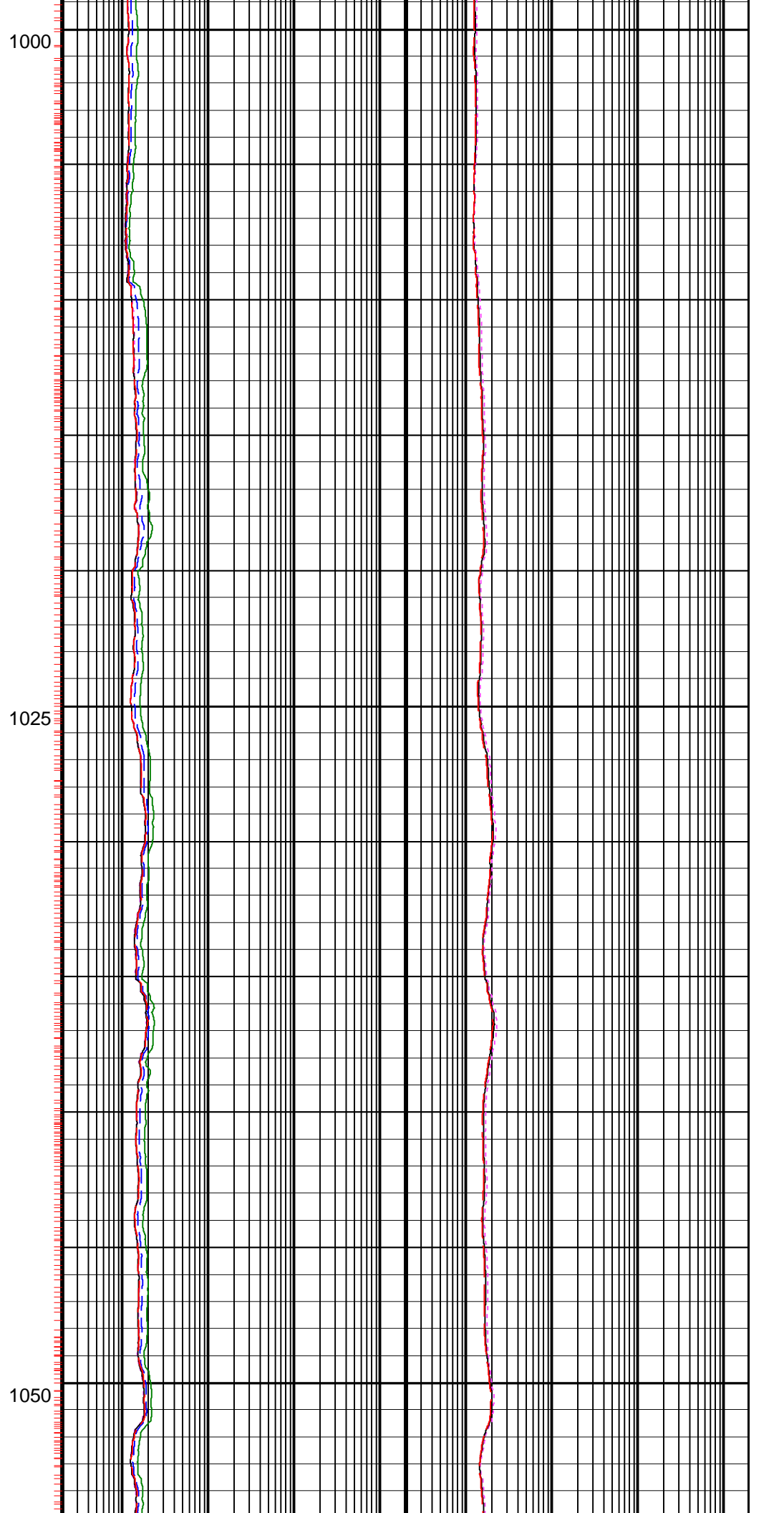
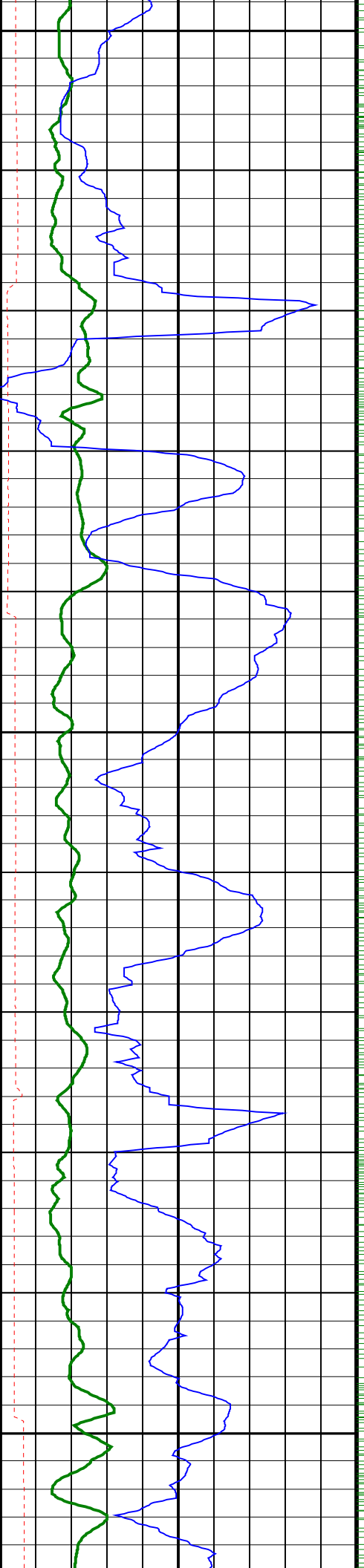


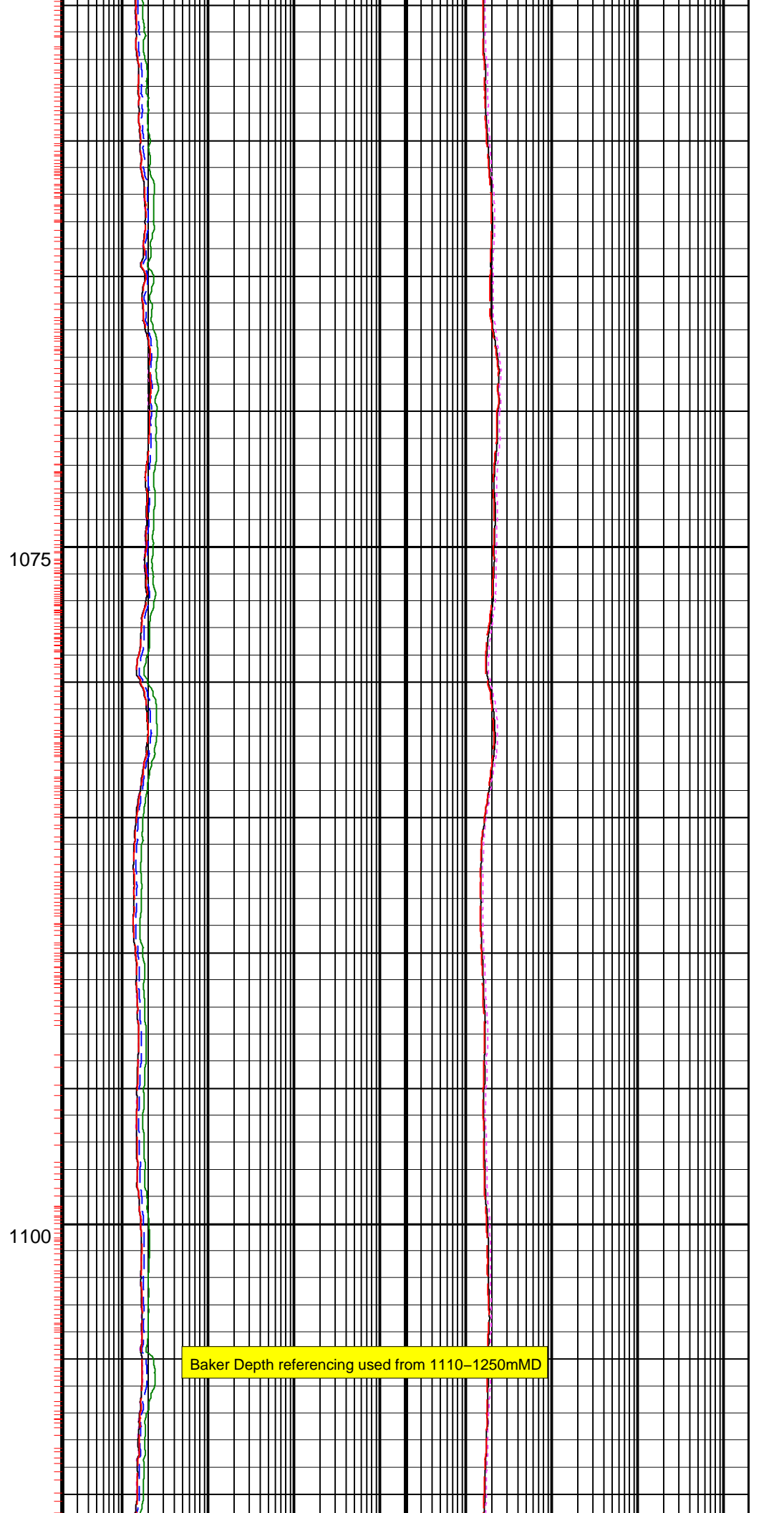
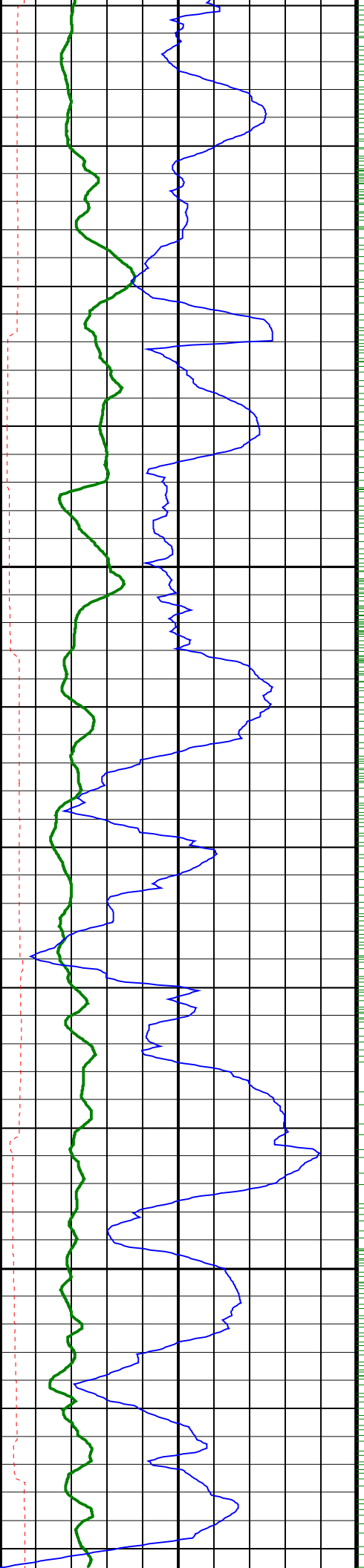


950

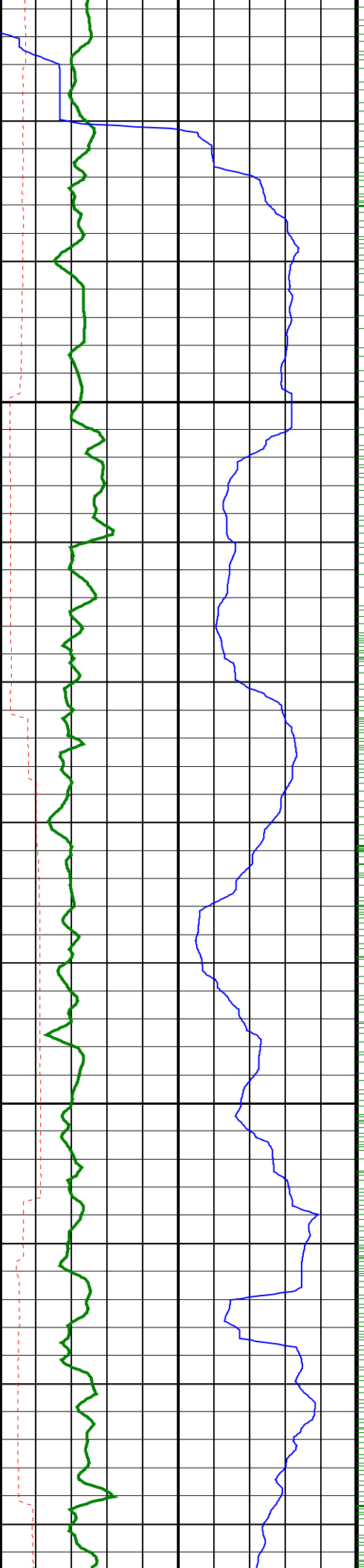
975





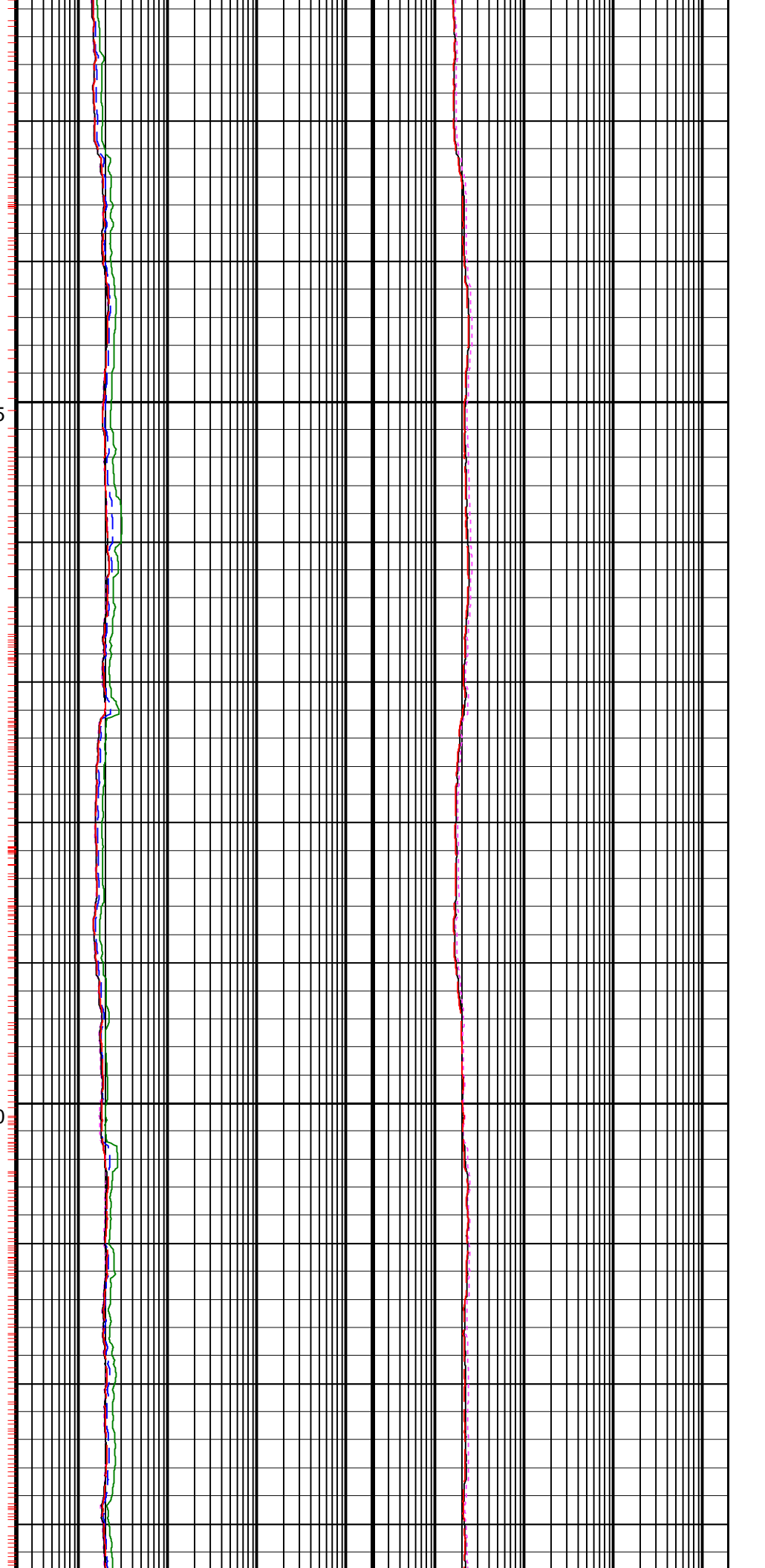


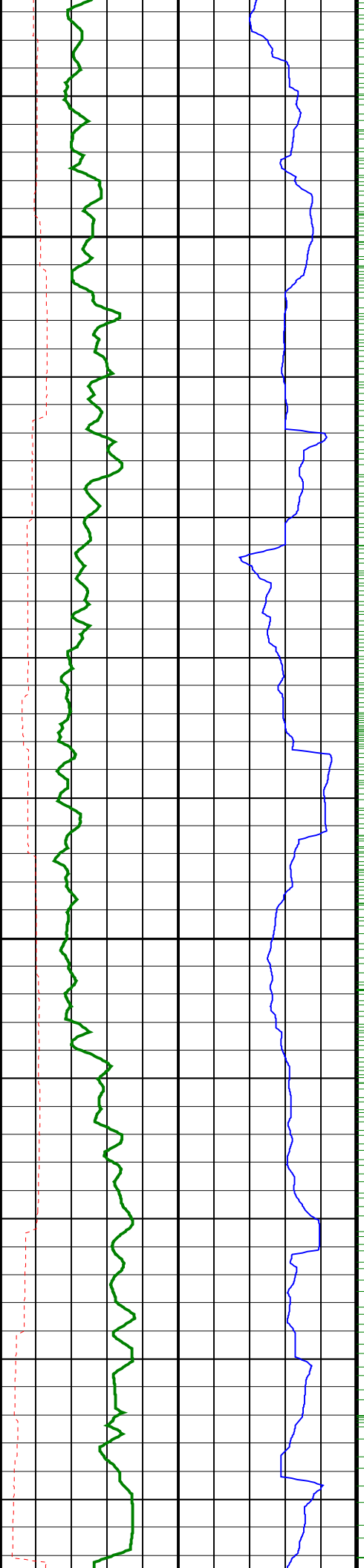
Baker Depth referencing used from 1110-1250mMD



1125

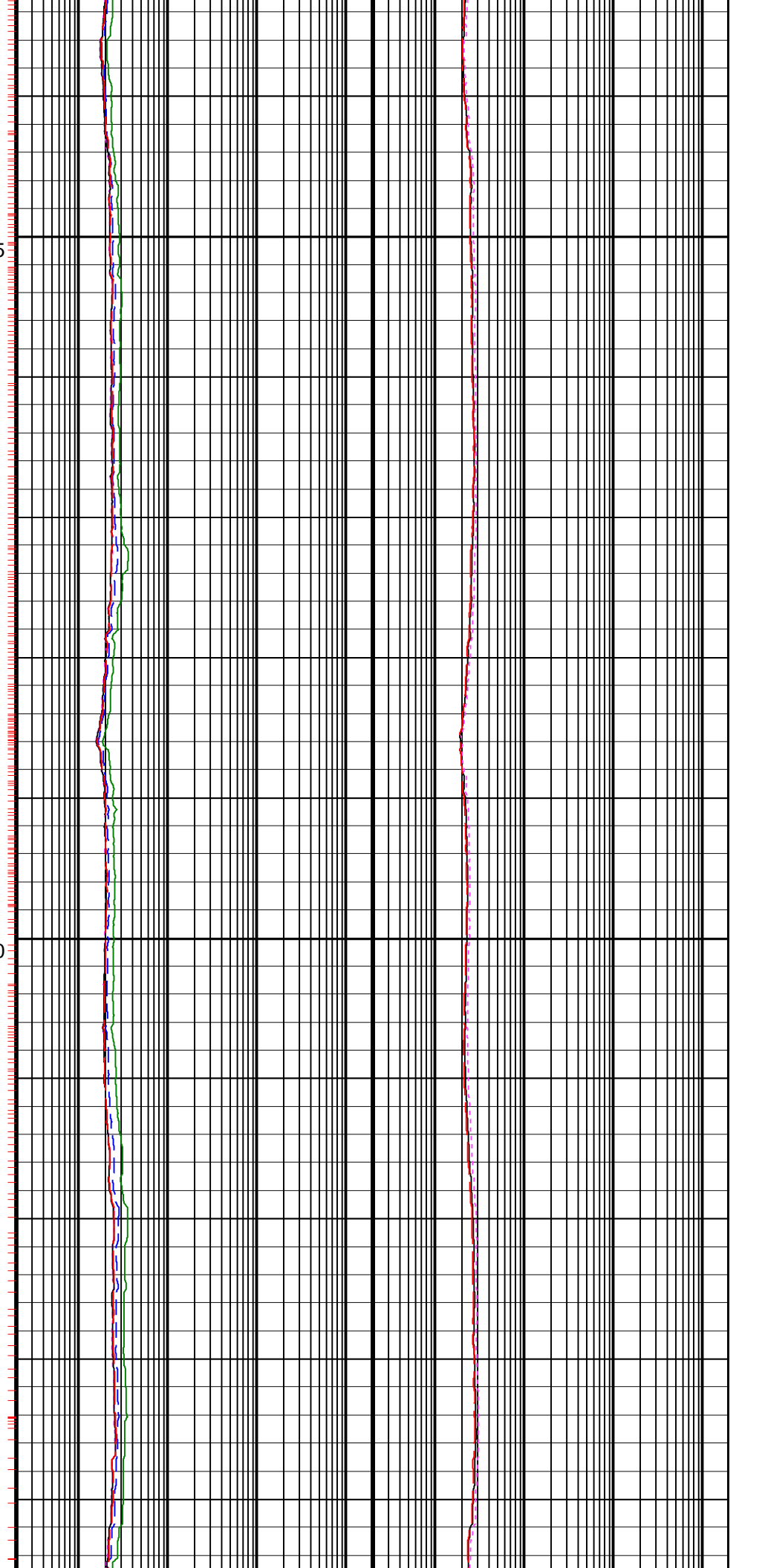
1150

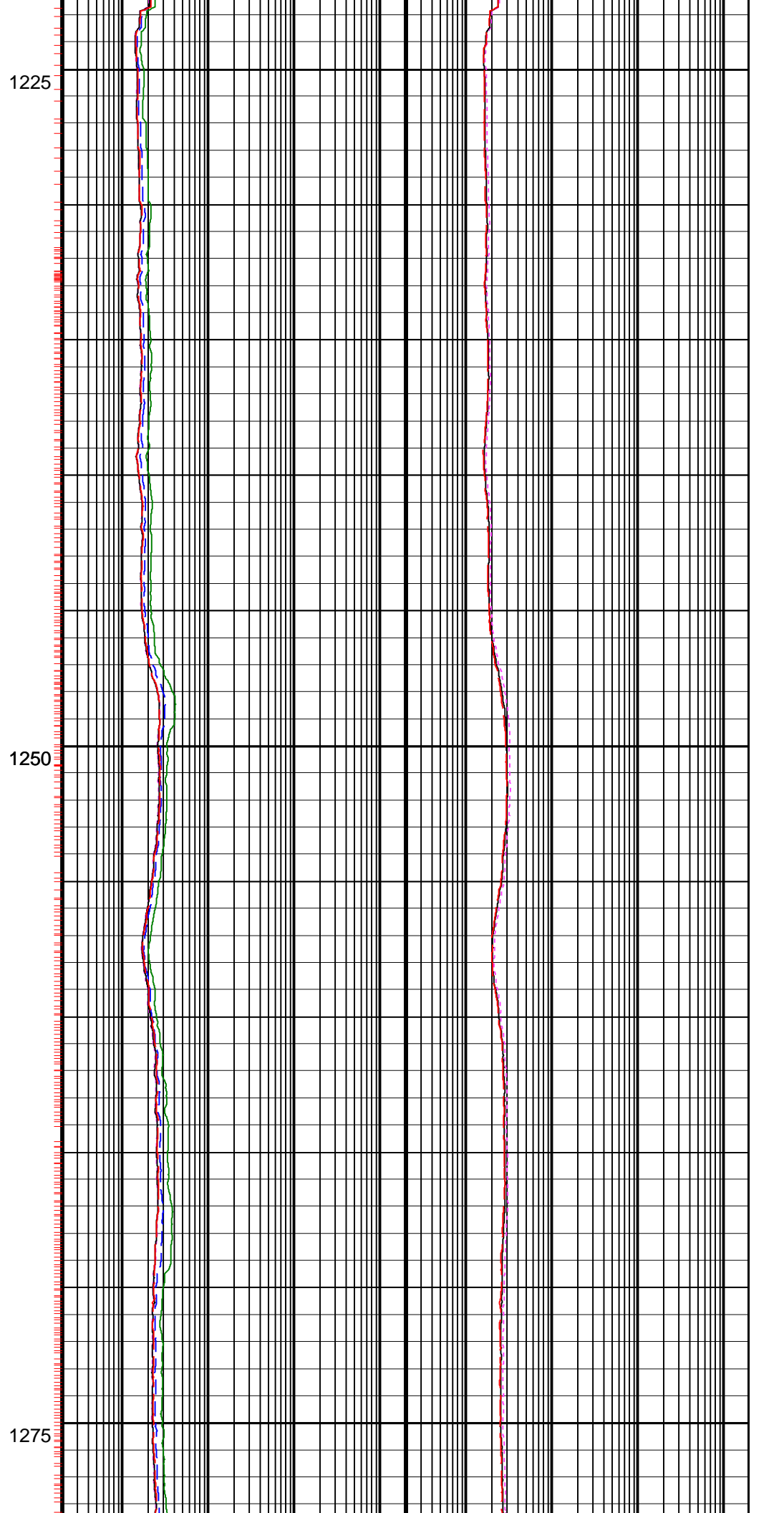
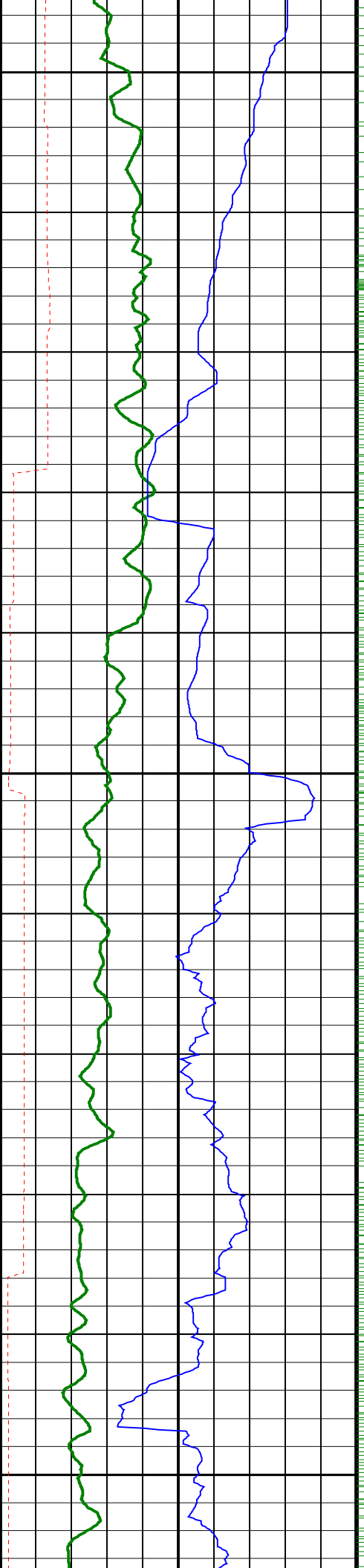


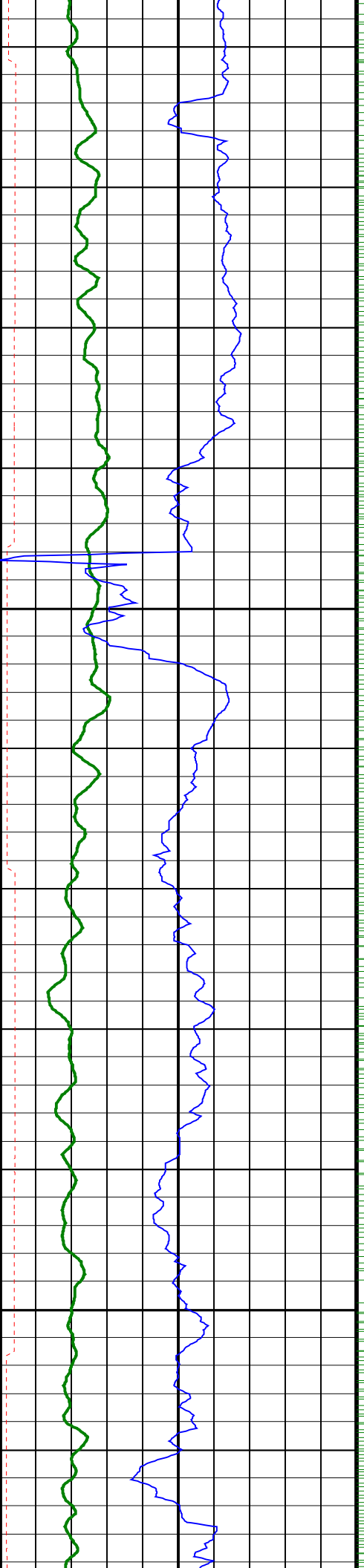


1175

1200

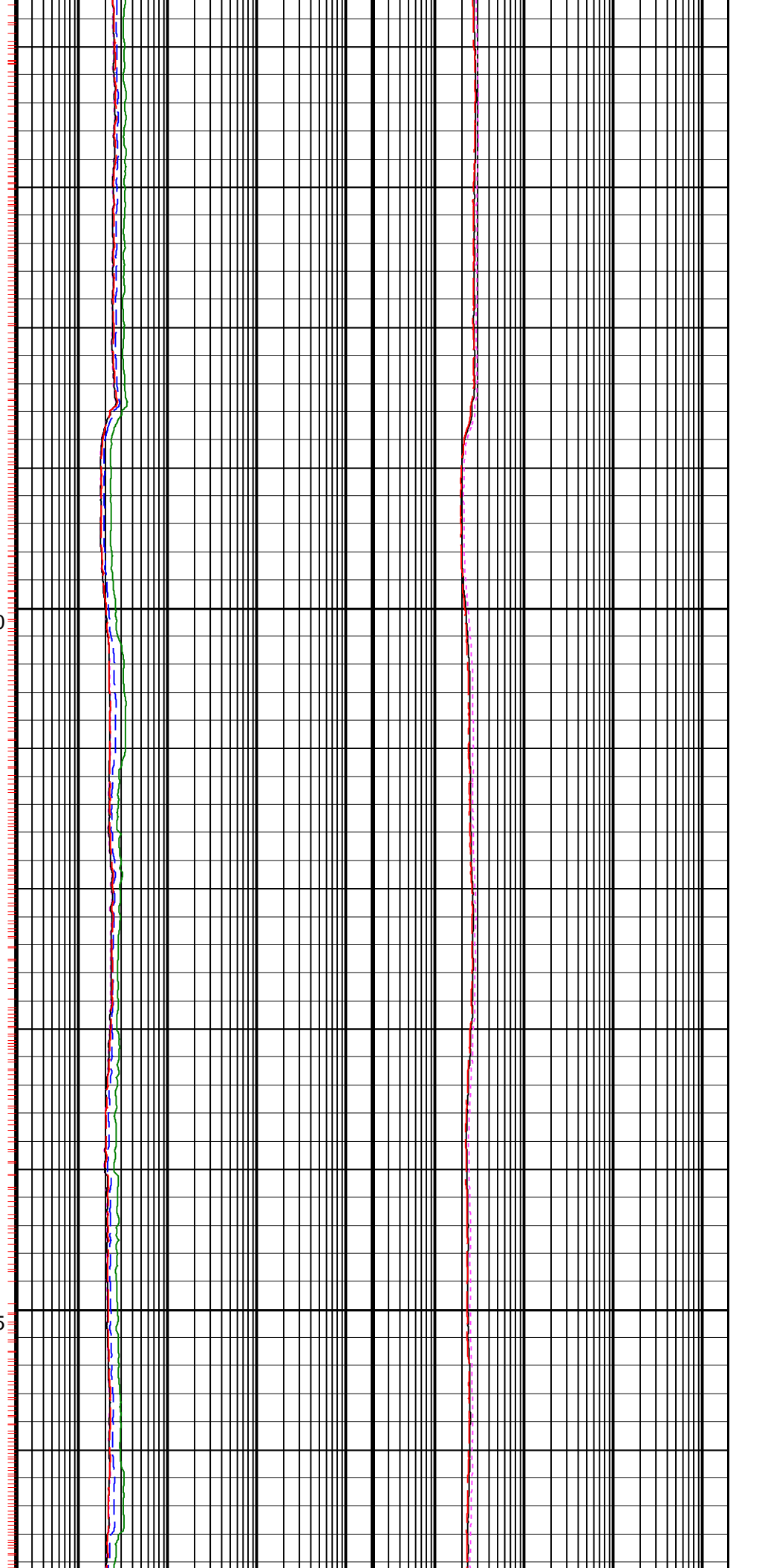


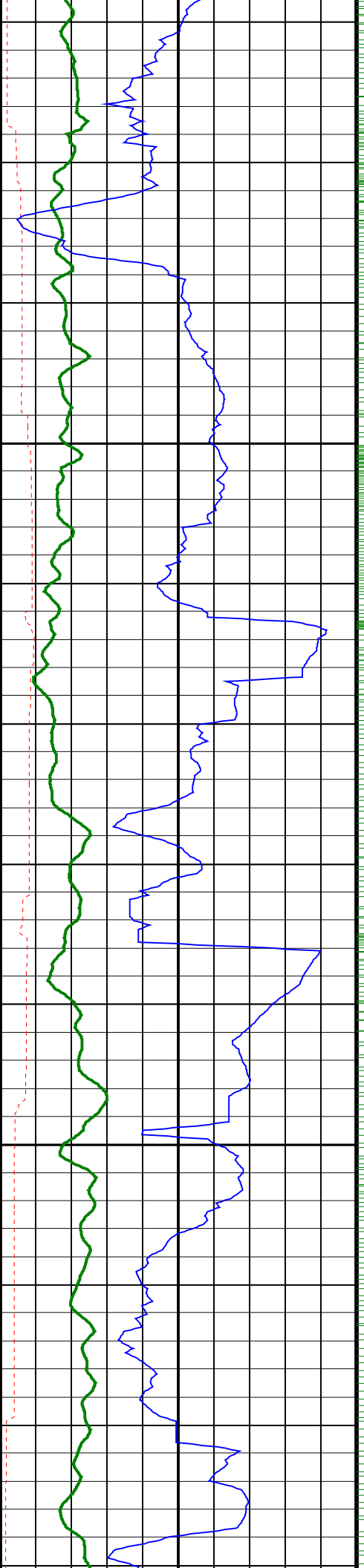




1300

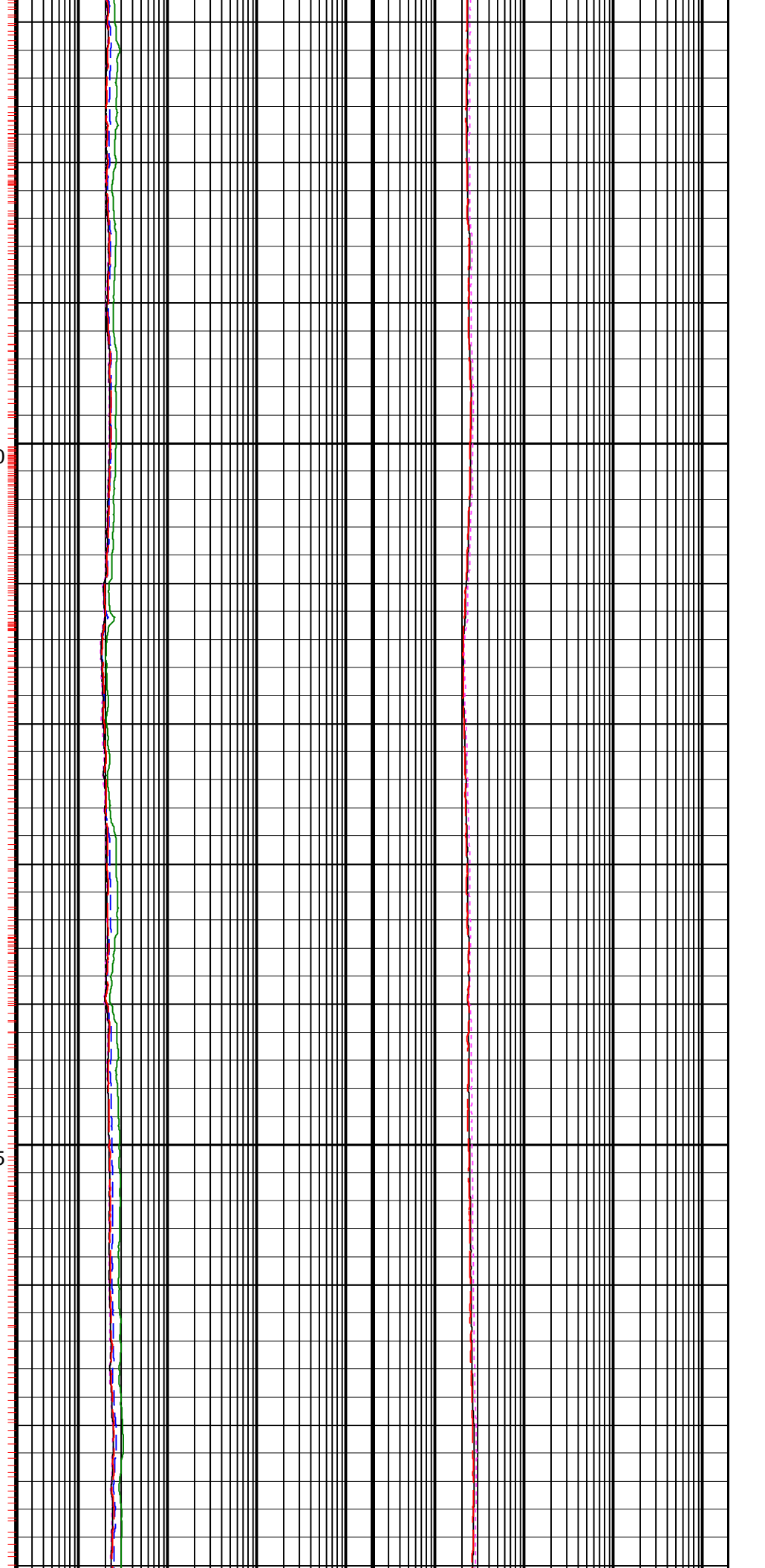
1325

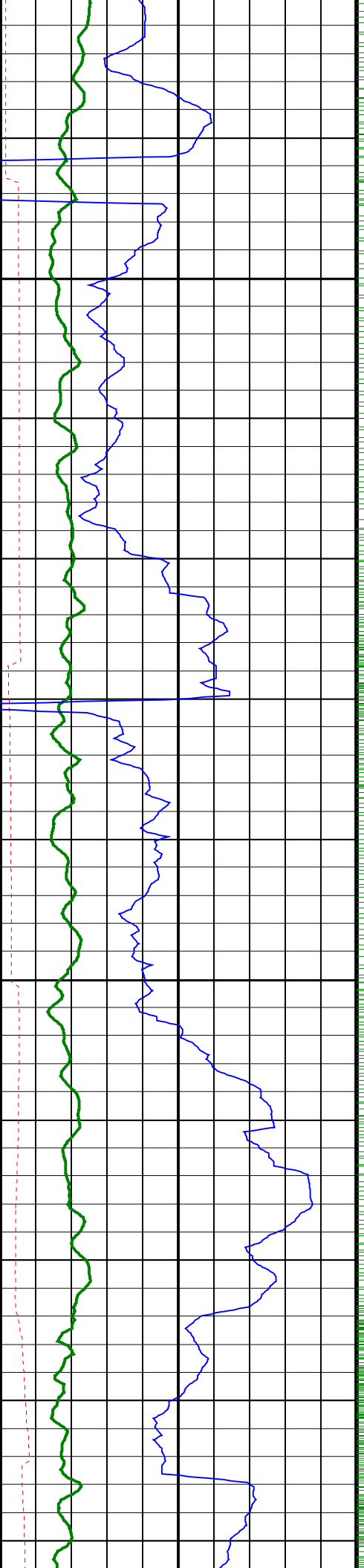




1350

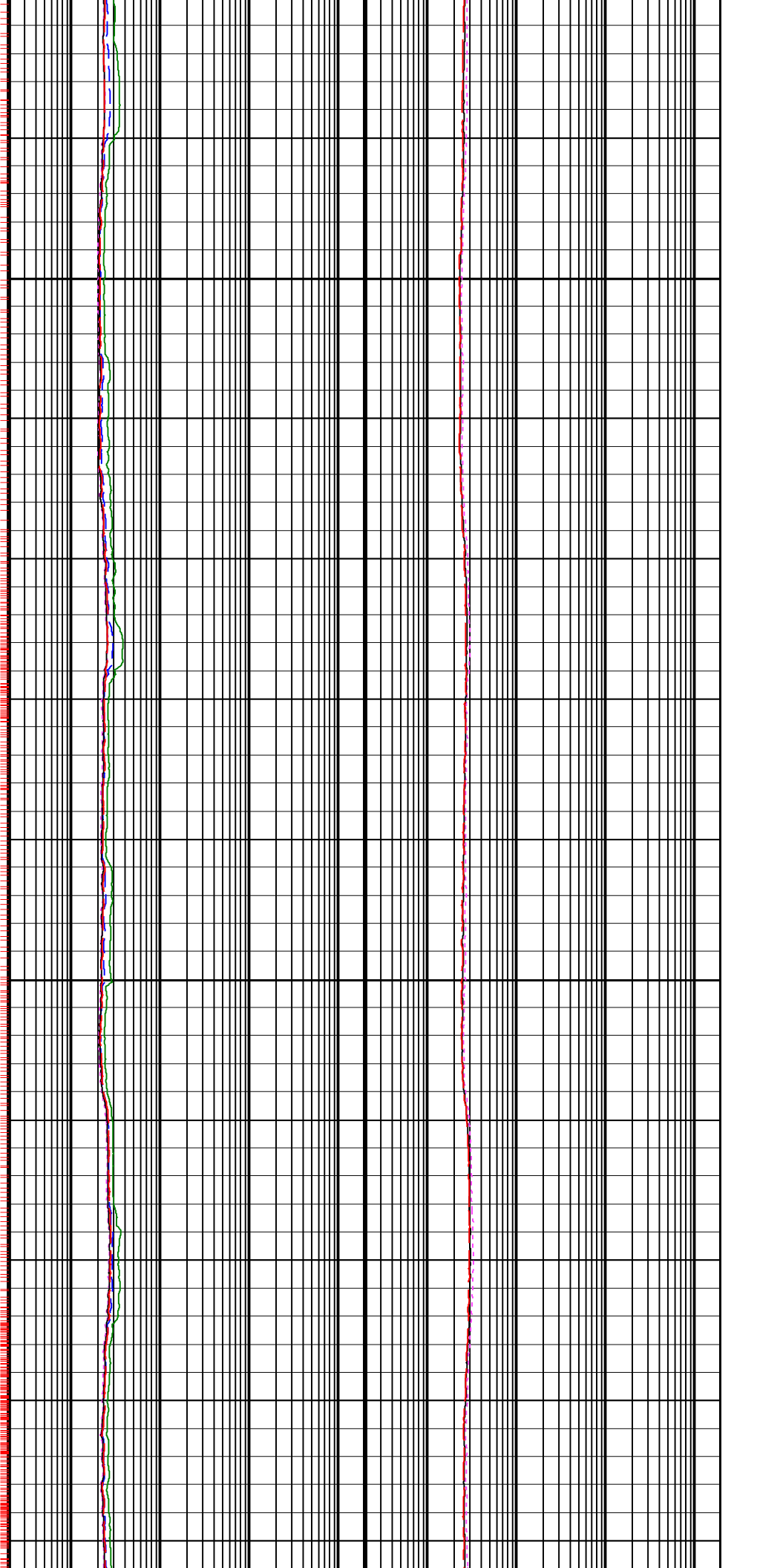
1375

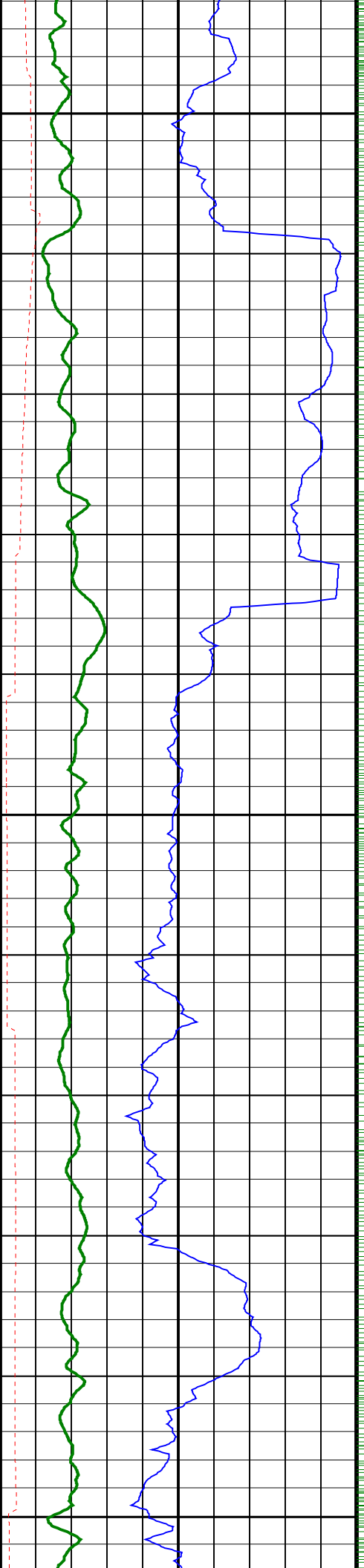




1400

1425

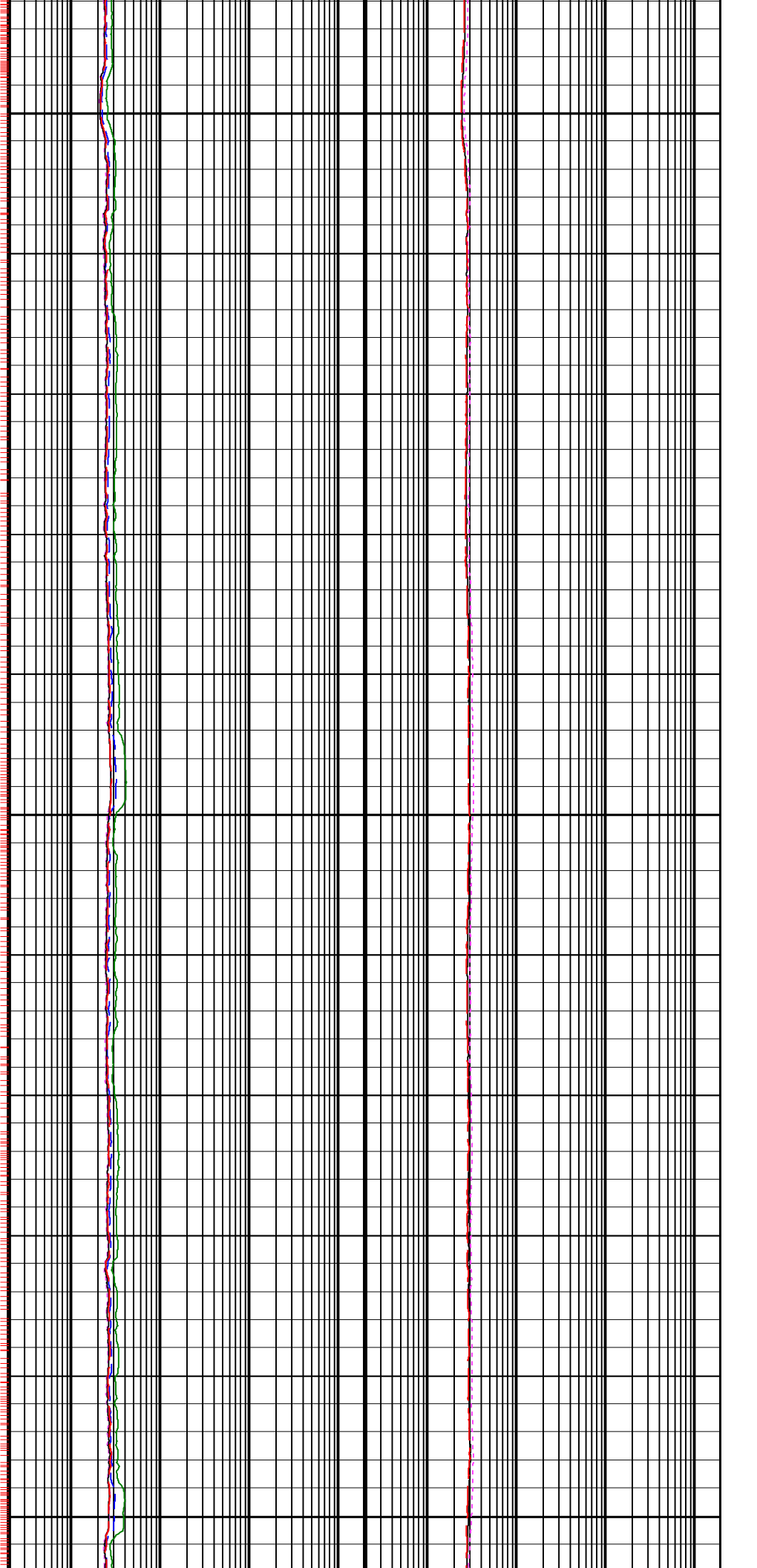


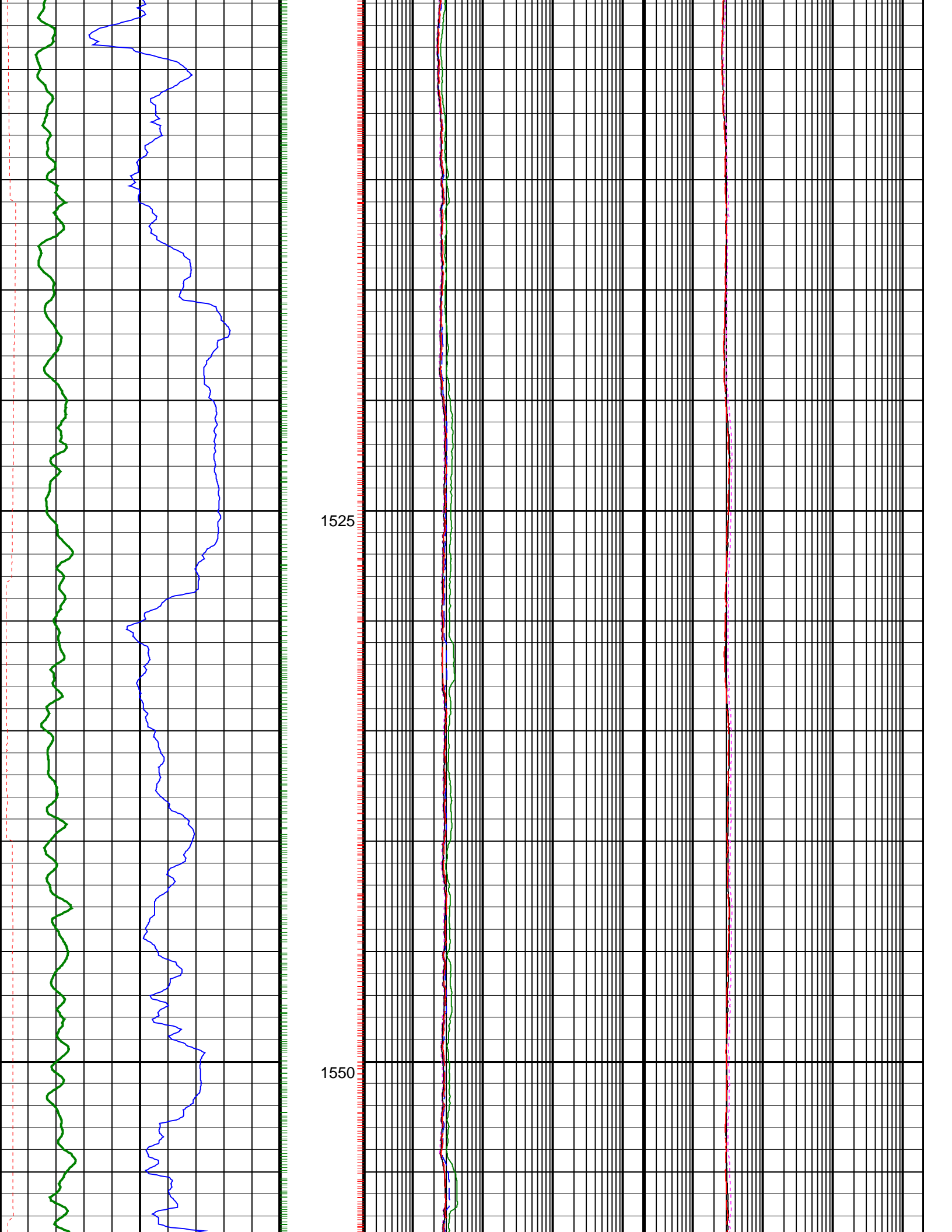


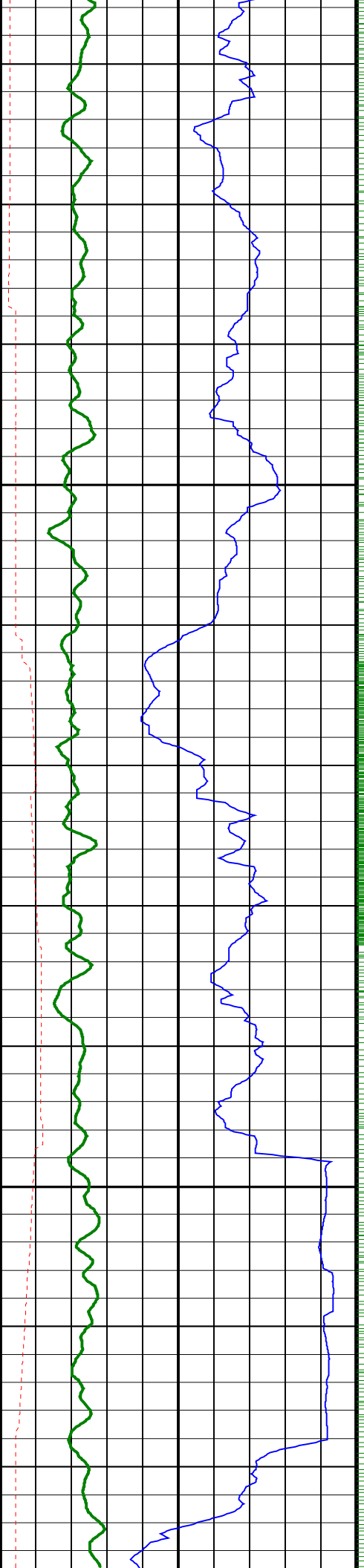
1450

1475

1500

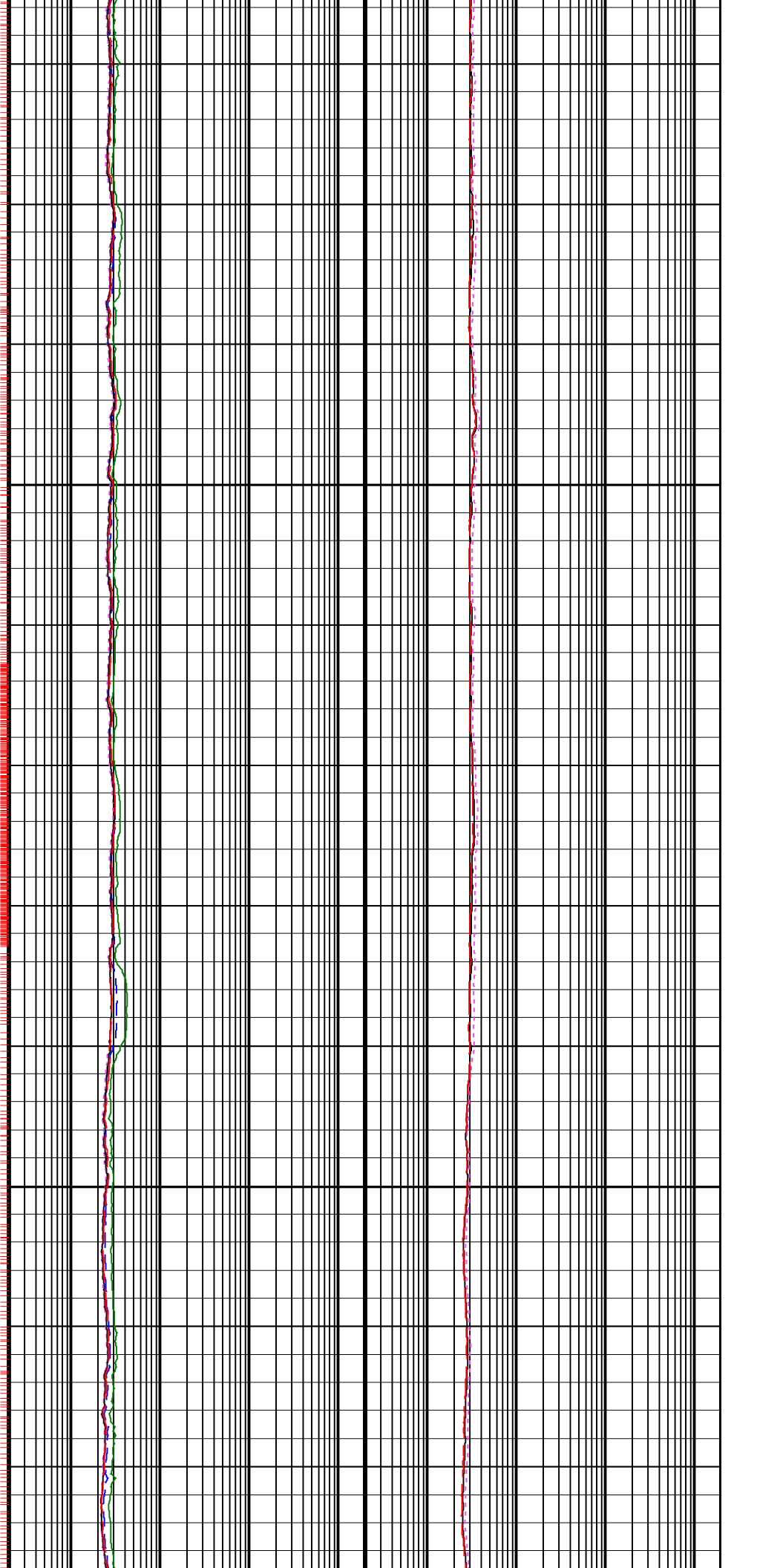


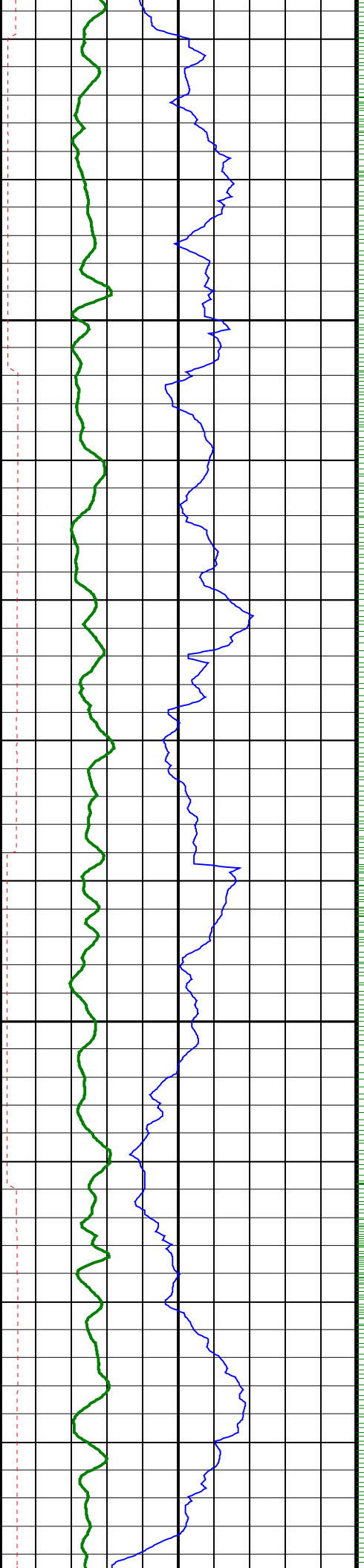




1575

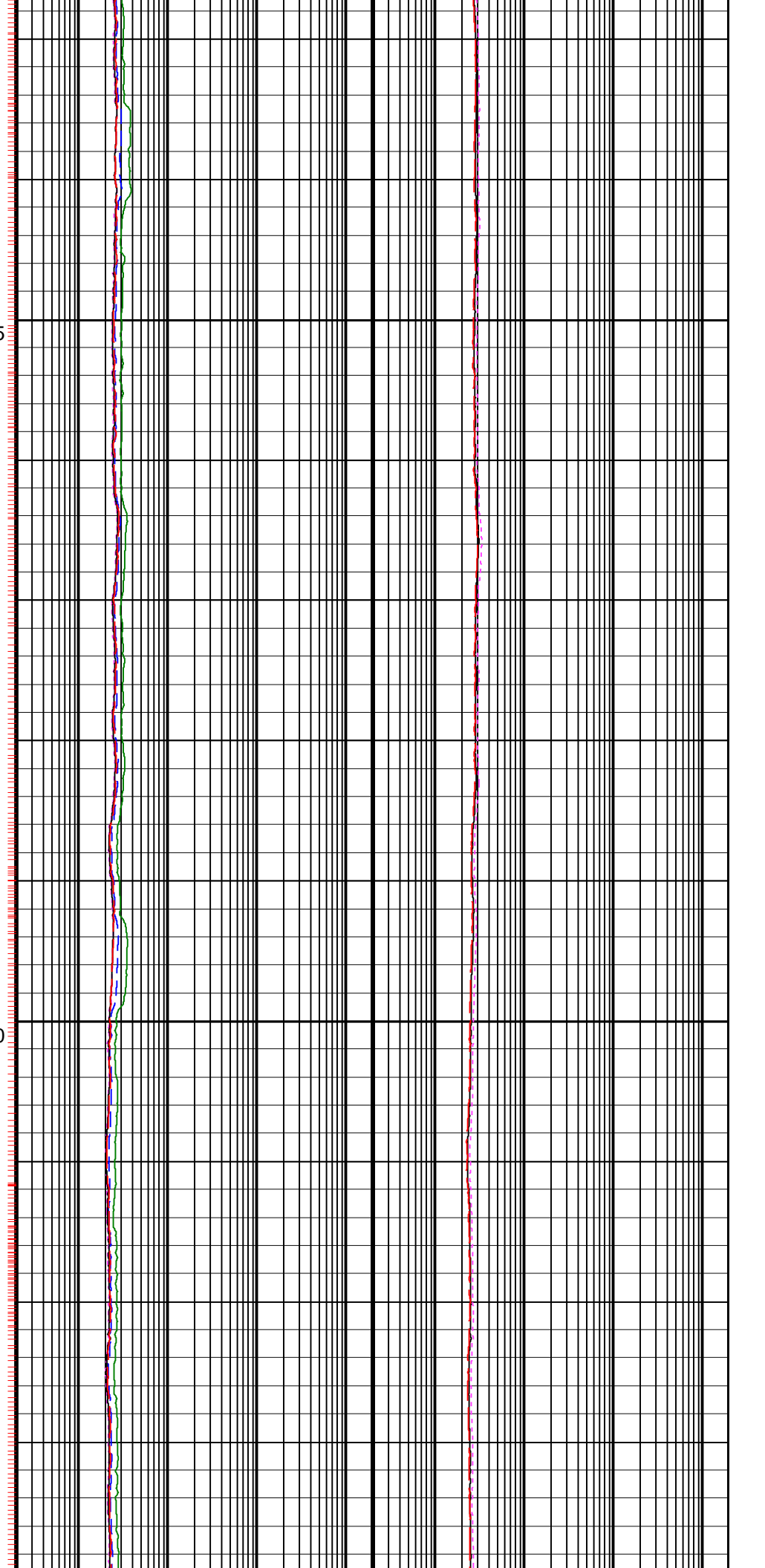
1600

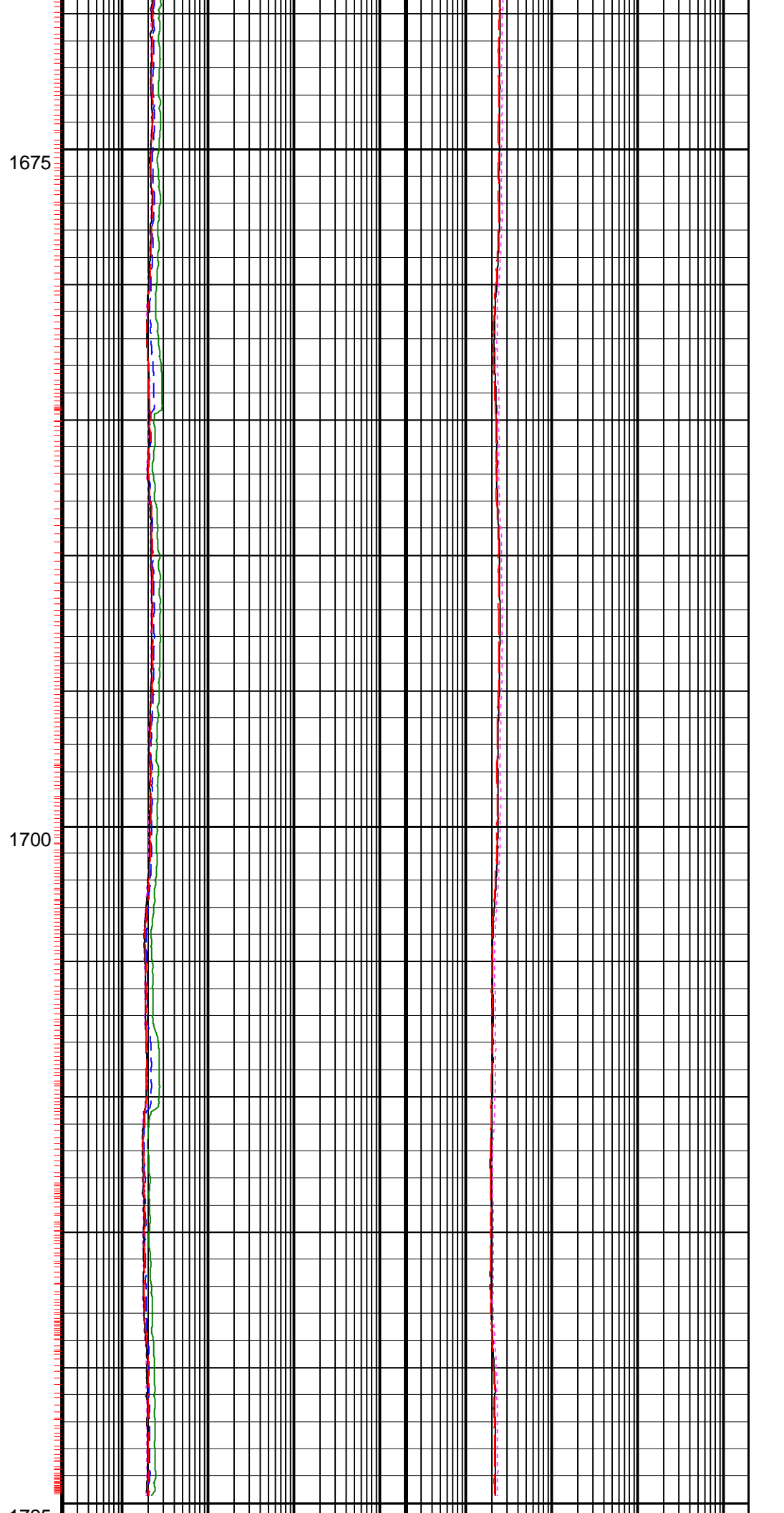
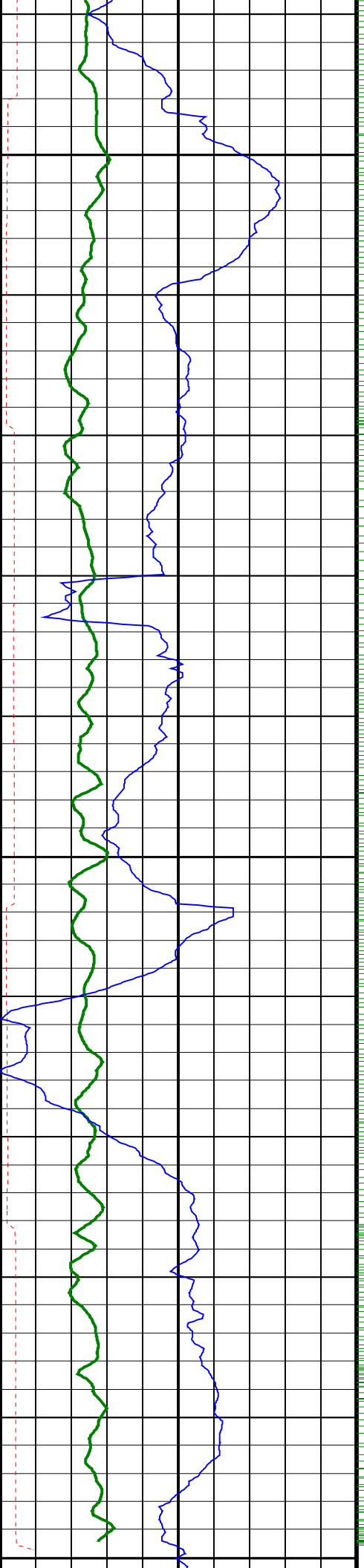


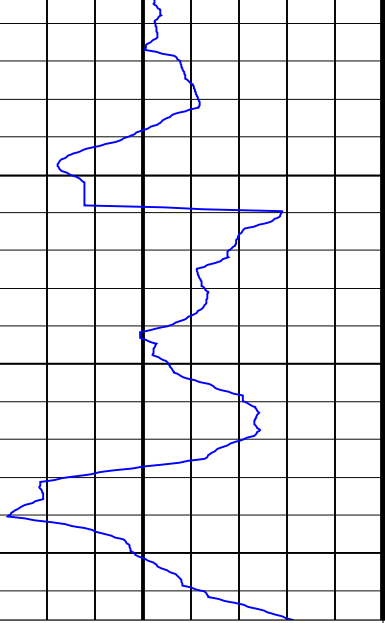


1625

1650







16in Section TD@ 1741.00mMD

<p>ARC Gamma Ray (GR_ARC) (GAPI) 0 200</p>	<p>ARC Phase-Shift Resistivity 16-in. at 2 MHz (P16H) 0.2 (OHMM) 2000</p>	<p>ARC Attenuation Resistivity 28-in. at 2 MHz (A28H) 0.2 (OHMM) 2000</p>
<p>ARC Resistivity Time After Bit (TAB_ARC_RES) (HR) 0 10</p>	<p>ARC Phase-Shift Resistivity 22-in. at 2 MHz (P22H) 0.2 (OHMM) 2000</p>	<p>ARC Attenuation Resistivity 34-in. at 2 MHz (A34H) 0.2 (OHMM) 2000</p>
<p>Rate of Penetration, Averaged over Last 5ft (ROP5_RM) (M/HR) 200 0</p>	<p>ARC Phase-Shift Resistivity 28-in. at 2 MHz (P28H) 0.2 (OHMM) 2000</p>	<p>ARC Attenuation Resistivity 40-in. at 2 MHz (A40H) 0.2 (OHMM) 2000</p>
	<p>ARC Phase-Shift Resistivity 34-in. at 2 MHz (P34H) 0.2 (OHMM) 2000</p>	
	<p>ARC Phase-Shift Resistivity 40-in. at 2 MHz (P40H) 0.2 (OHMM) 2000</p>	

PIP SUMMARY

- └ ARC Gamma Ray Samples
- └ ARC Resistivity Samples