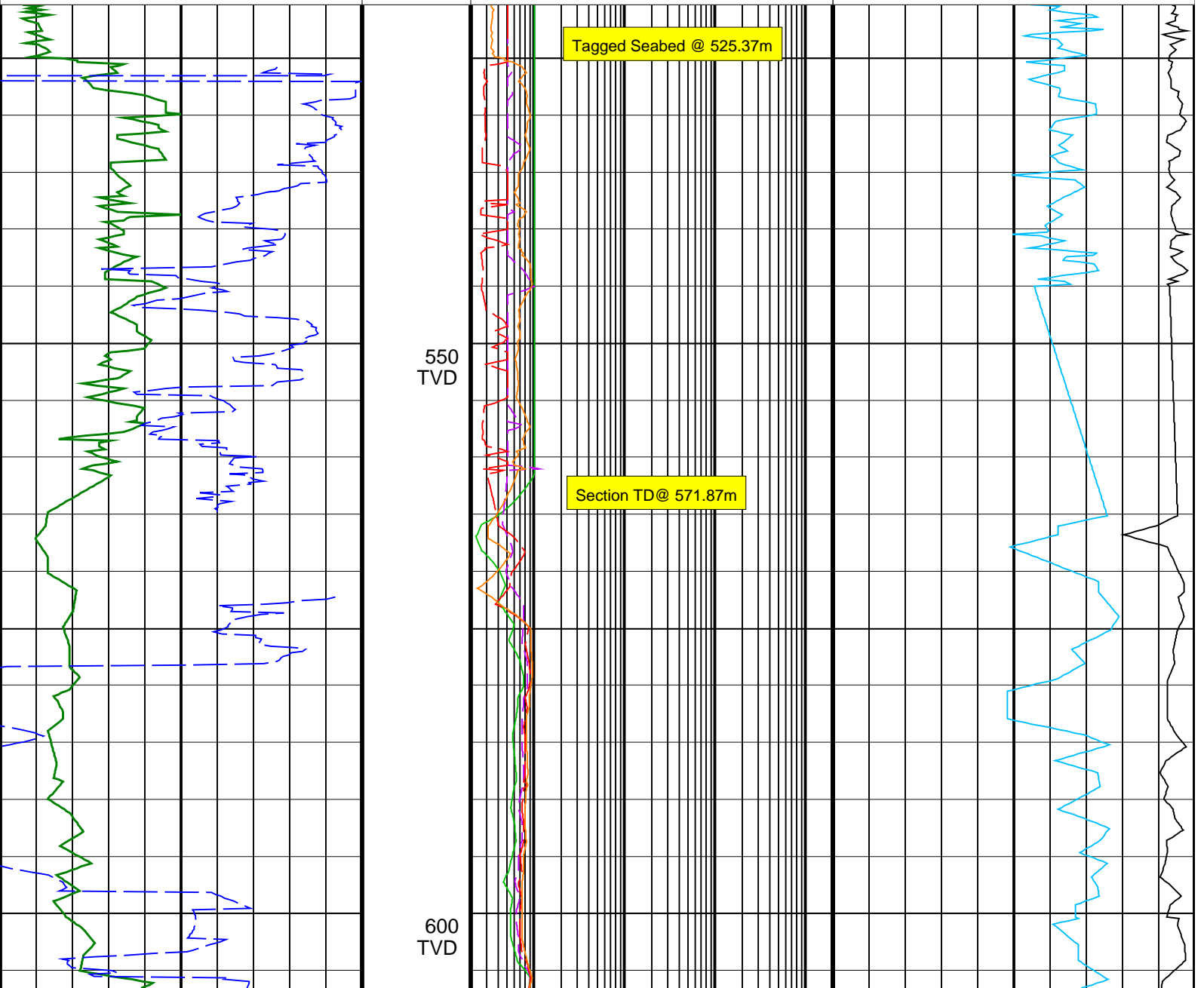
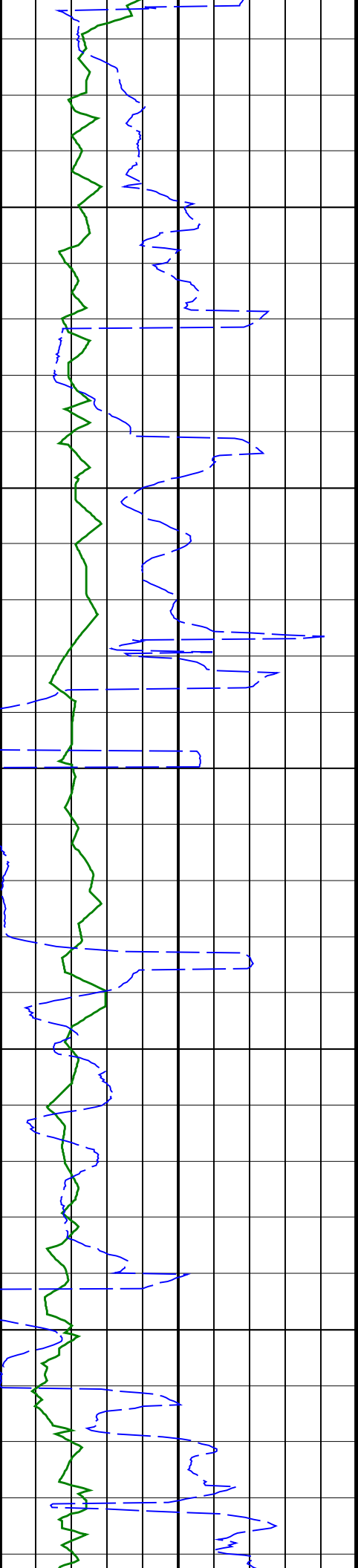


# Elver-1\_VISION Resistivity Rt 500TVD

IDEAL Version: ID13\_0C\_08 <TVD> Vertical Scale: 1:500 Graphics File Created: 22-Dec-2008 05:18

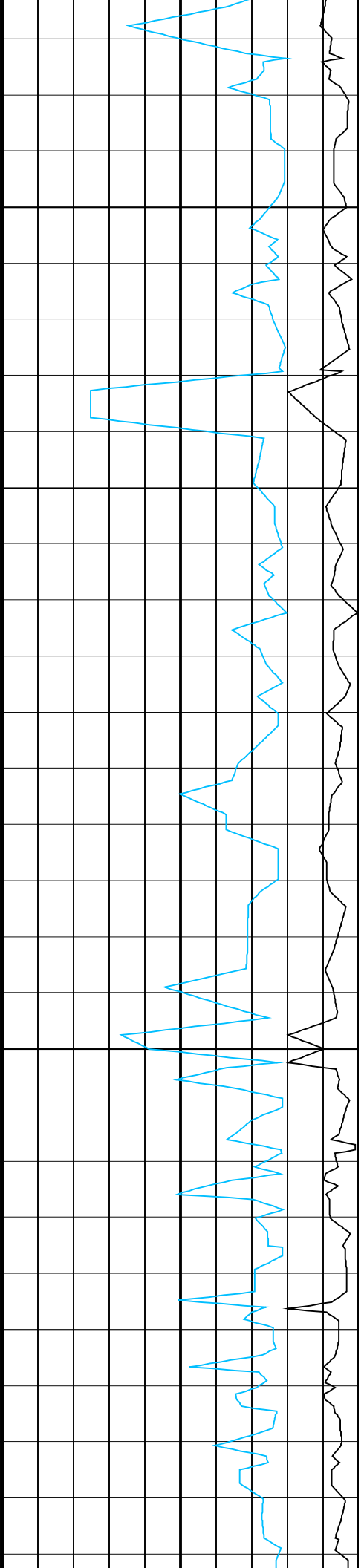
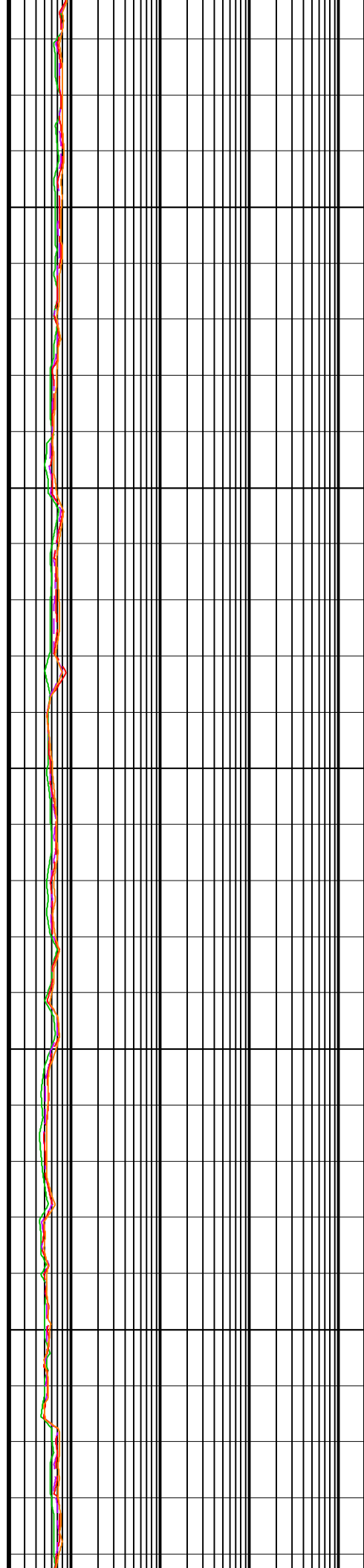
	ARC BHCorr Attenuation Resistivity 40-in. at 2 MHz, Real-Time (A40H_RT) 0.2 (OHMM) 2000	
	ARC BHCorr Phase-Shift Resistivity 40-in. at 2 MHz, Real-Time (P40H_RT) 0.2 (OHMM) 2000	
ARC Gamma Ray, Real-Time (ARC_GR_RT) 0 (GAPI) 200	ARC BHCorr Phase-Shift Resistivity 28-in. at 2 MHz, Real-Time (P28H_RT) 0.2 (OHMM) 2000	Delta-T Compressional, Real-Time (DTCO_RT) 140 (US/F) 40
ROP*5 (ROP5) 200 (M/HR) 0	ARC BHCorr Phase-Shift Resistivity 16-in. at 2 MHz, Real-Time (P16H_RT) 0.2 (OHMM) 2000	Coherence at Compressional Peak, Real-Time (CHCO_RT) -4 (----) 1

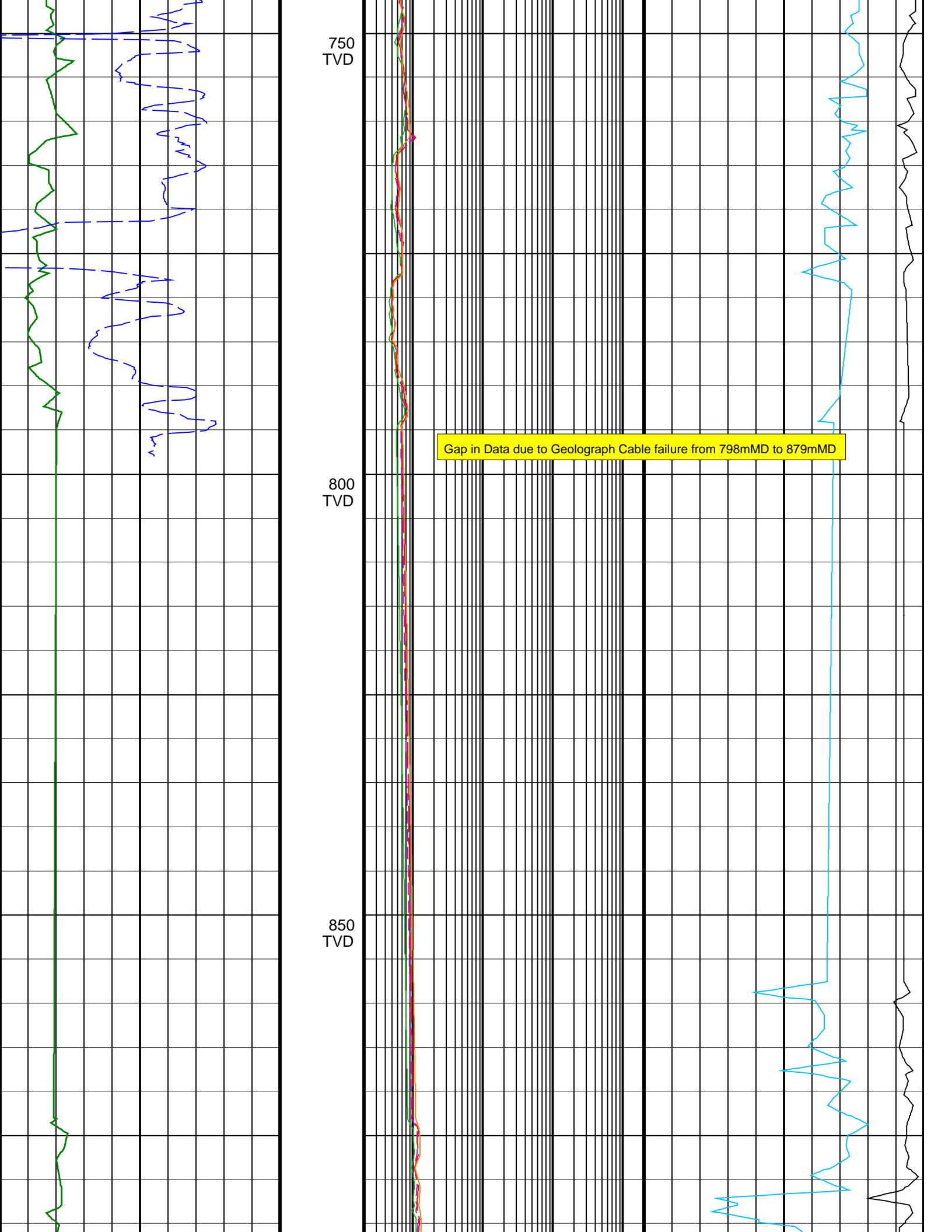




650  
TVD

700  
TVD



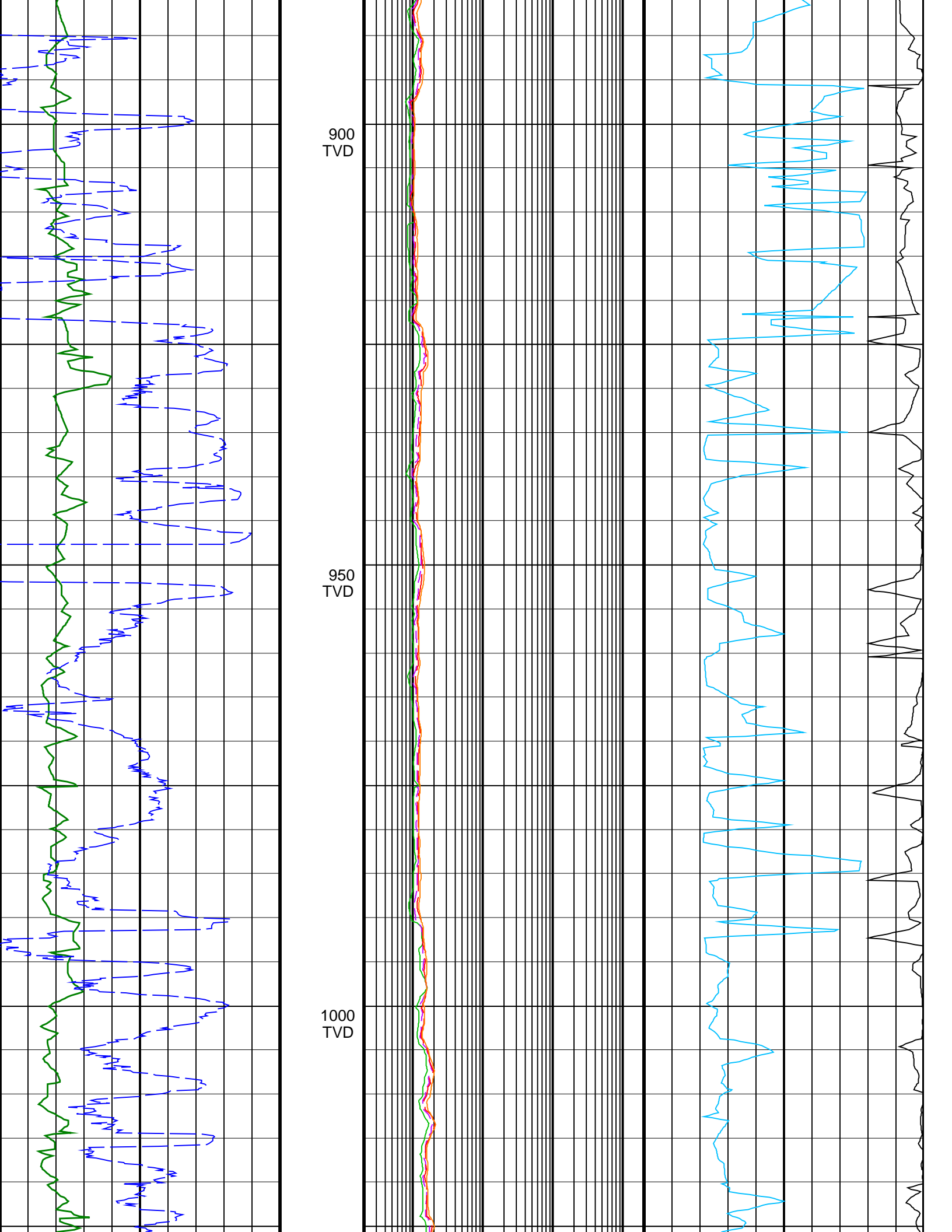


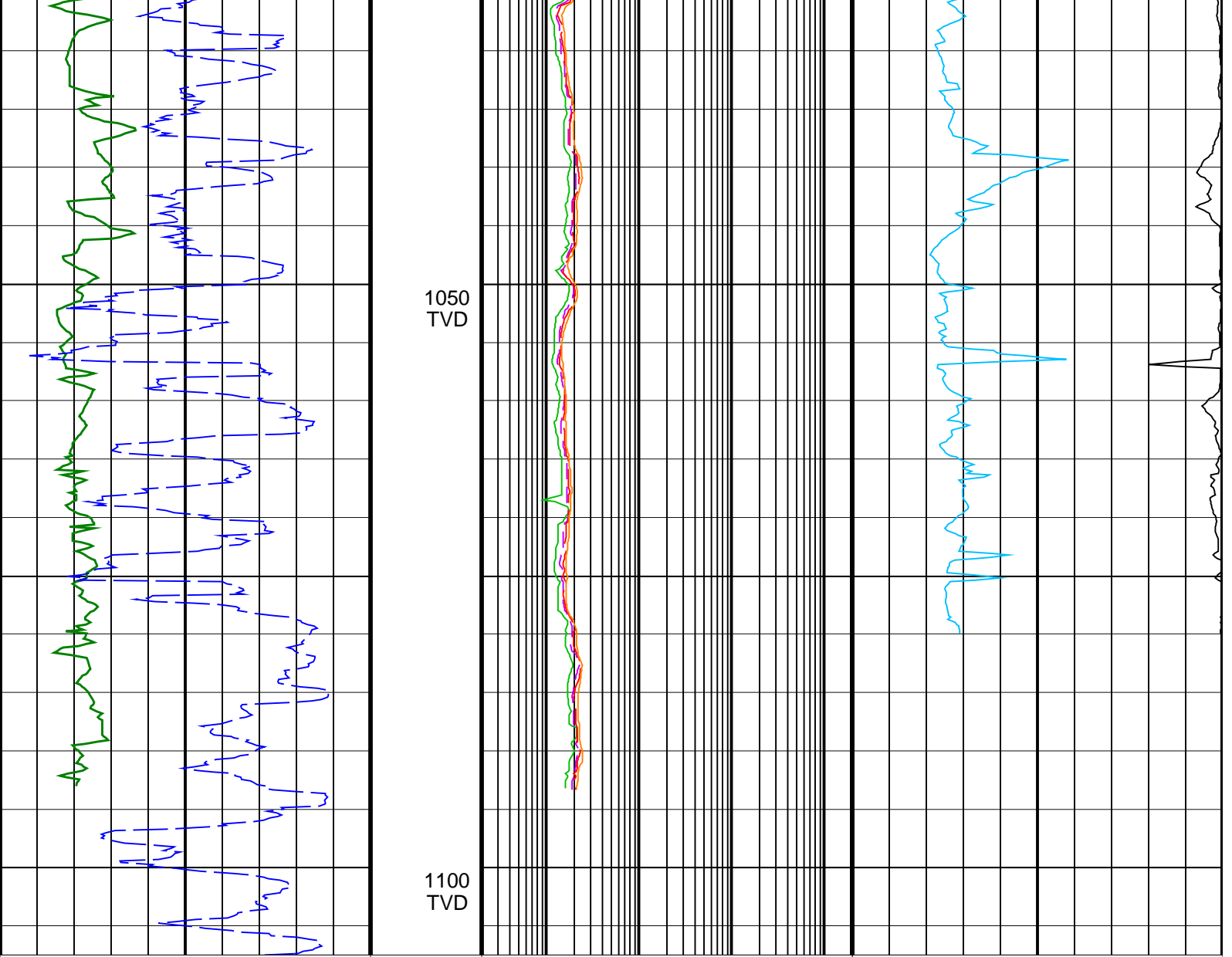
750  
TVD

800  
TVD

850  
TVD

Gap in Data due to Geograph Cable failure from 798mMD to 879mMD





<p><b>ROP*5 (ROP5)</b> (M/HR)      0</p>	<p><b>ARC BHCorr Phase-Shift Resistivity</b> <b>16-in. at 2 MHz, Real-Time (P16H_RT)</b> 0.2 (OHMM)      2000</p>	<p><b>Coherence at Compressional Peak,</b> <b>Real-Time (CHCO_RT)</b> -4 (----)      1</p>
<p><b>ARC Gamma Ray, Real-Time (ARC_GR_RT)</b> (GAPI)      200</p>	<p><b>ARC BHCorr Phase-Shift Resistivity</b> <b>28-in. at 2 MHz, Real-Time (P28H_RT)</b> 0.2 (OHMM)      2000</p>	<p><b>Delta-T Compressional, Real-Time</b> <b>(DTCO_RT)</b> 140 (US/F)      40</p>
	<p><b>ARC BHCorr Phase-Shift Resistivity</b> <b>40-in. at 2 MHz, Real-Time (P40H_RT)</b> 0.2 (OHMM)      2000</p>	
	<p><b>ARC BHCorr Attenuation Resistivity</b> <b>40-in. at 2 MHz, Real-Time (A40H_RT)</b> 0.2 (OHMM)      2000</p>	