

Elver-1_VISION Resistivity RT 200MD

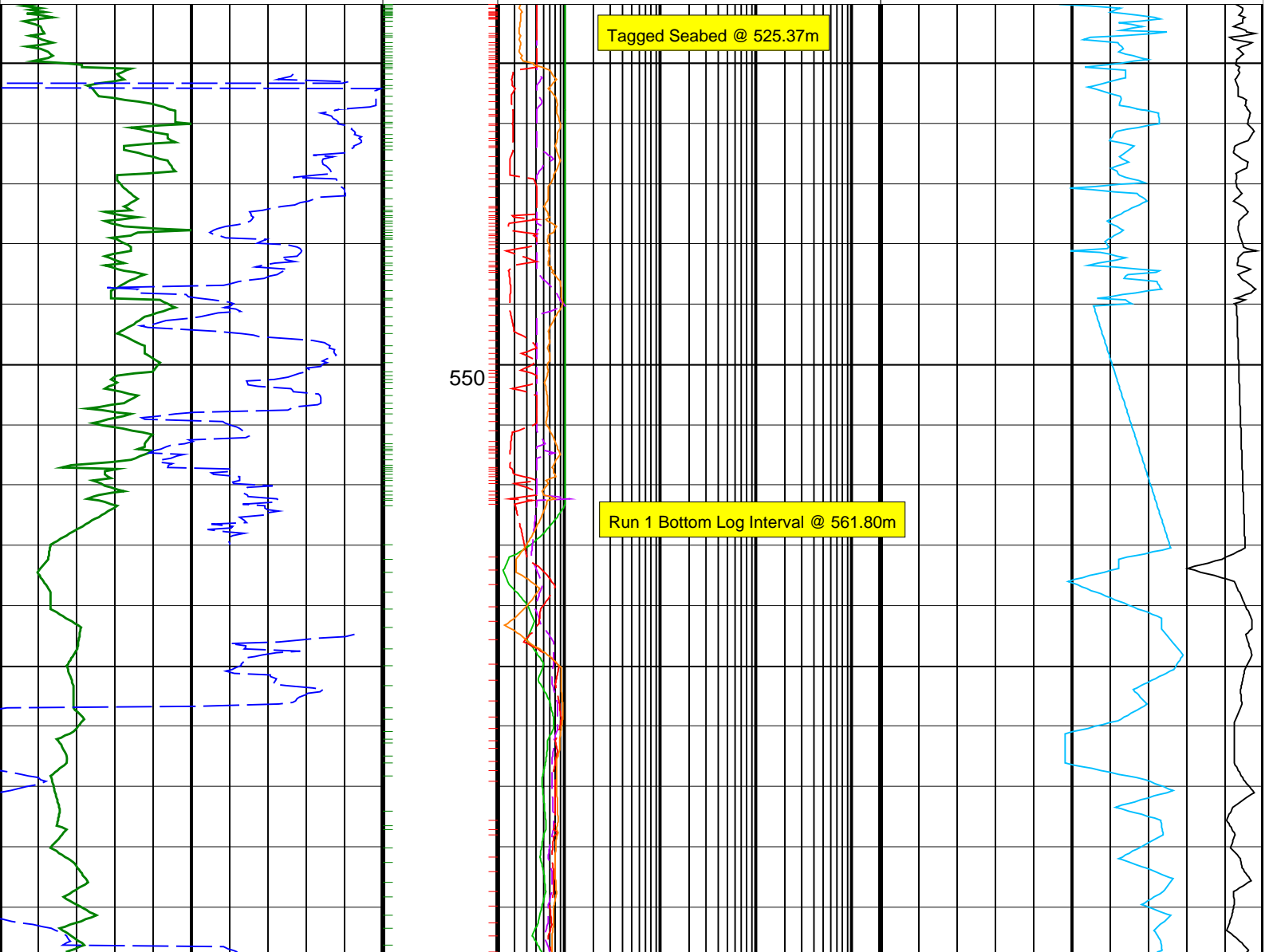
IDEAL Version: ID13_0C_08 <MD > Vertical Scale: 1:500

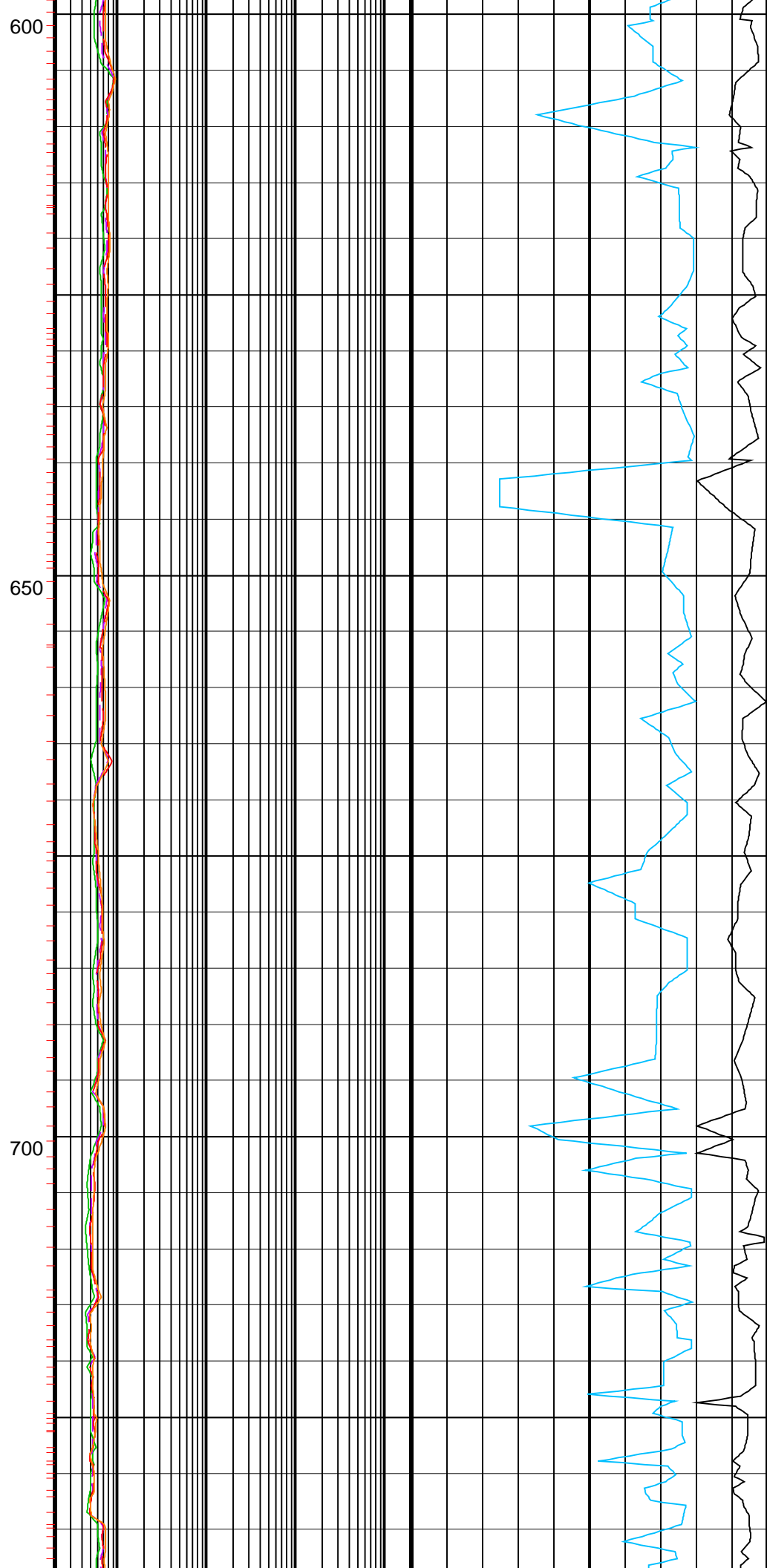
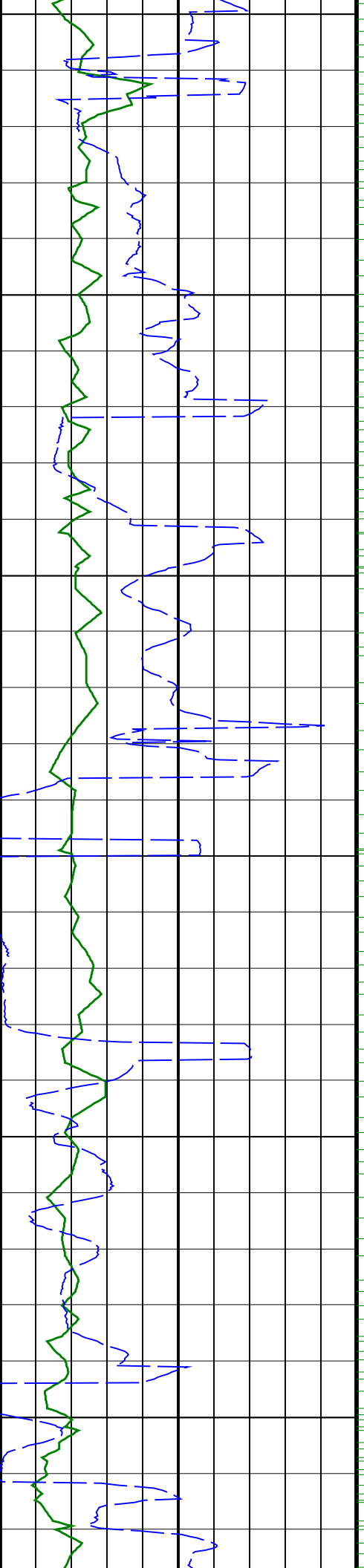
Graphics File Created: 22-Dec-2008 05:31

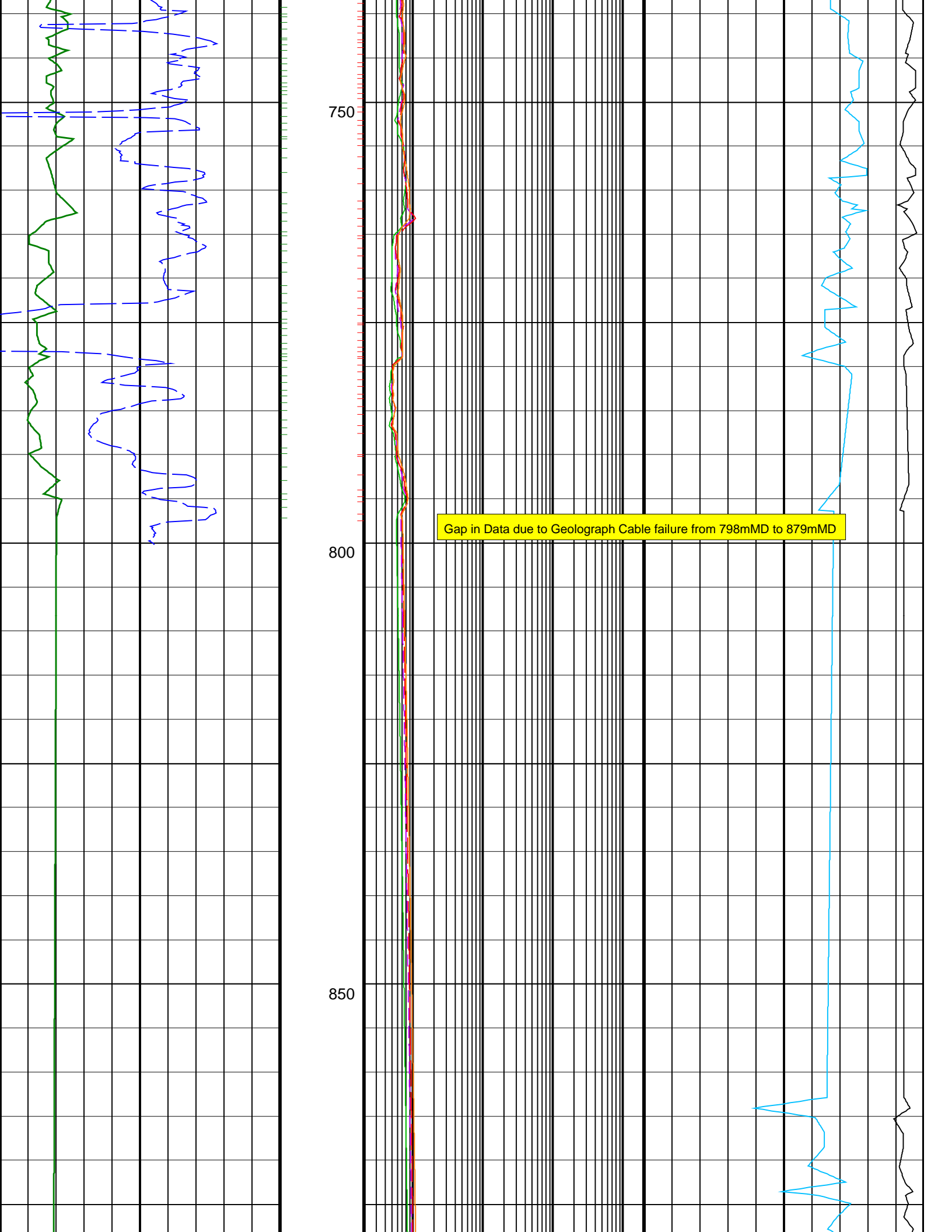
PIP SUMMARY

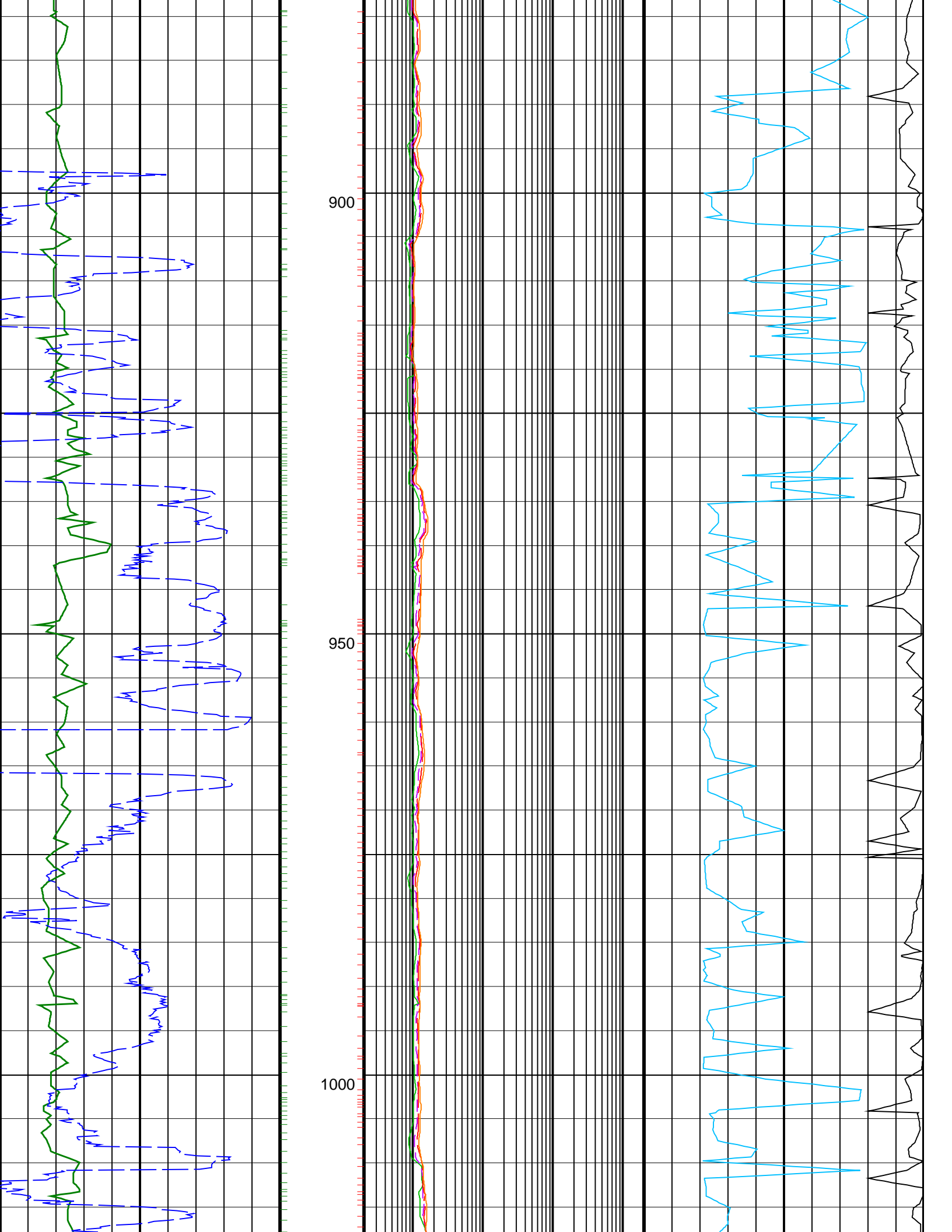
- └ ARC GRAPP PIP
- └ IMP RP16 PIP

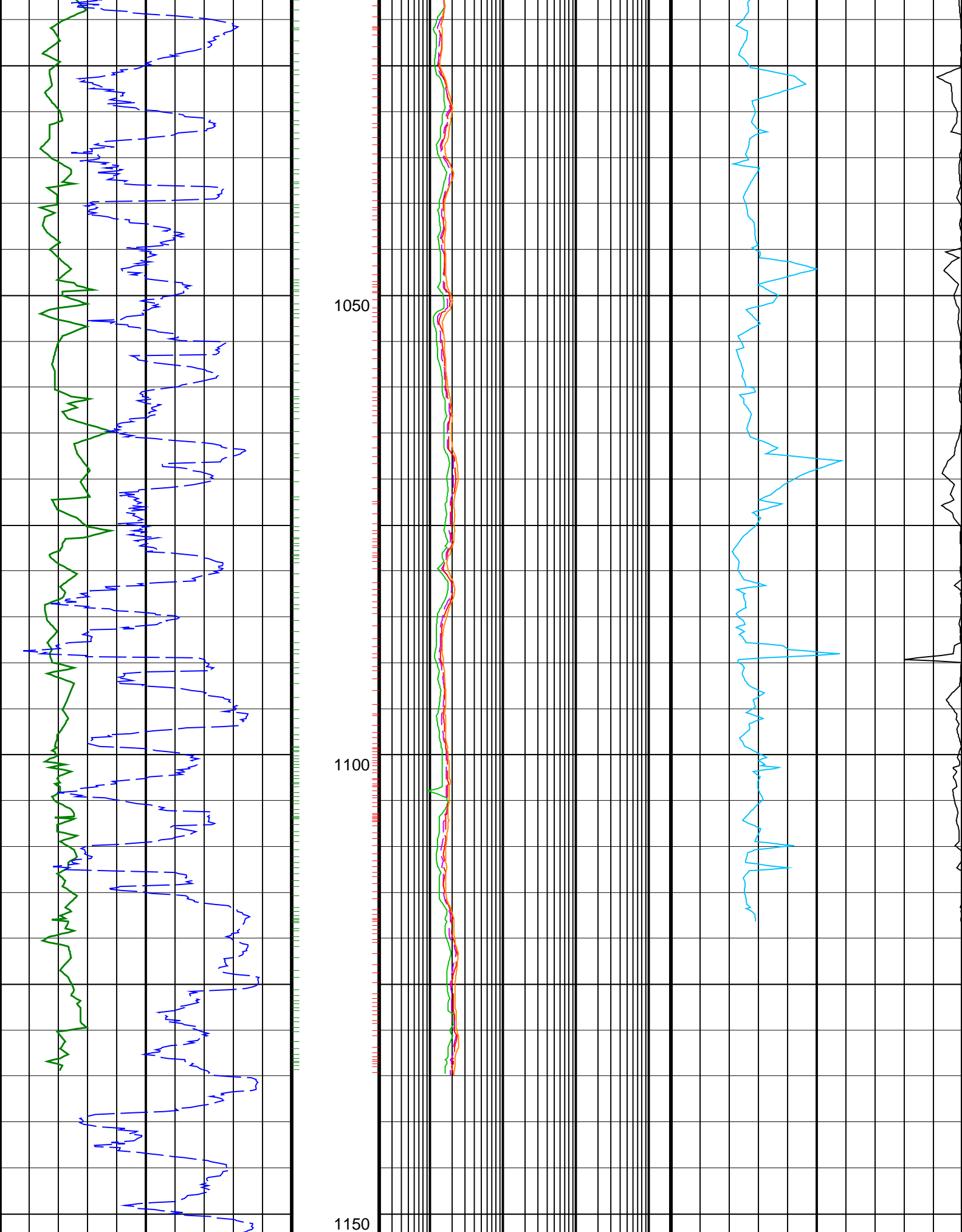
	ARC BHCorr Attenuation Resistivity 40-in. at 2 MHz, Real-Time (A40H_RT) 0.2 (OHMM) 2000	
	ARC BHCorr Phase-Shift Resistivity 40-in. at 2 MHz, Real-Time (P40H_RT) 0.2 (OHMM) 2000	
ARC Gamma Ray, Real-Time (ARC_GR_RT) 0 (GAPI) 200	ARC BHCorr Phase-Shift Resistivity 28-in. at 2 MHz, Real-Time (P28H_RT) 0.2 (OHMM) 2000	Delta-T Compressional, Real-Time (DTCO_RT) 140 (US/F) 40
ROP*5 (ROP5) 200 (M/HR) 0	ARC BHCorr Phase-Shift Resistivity 16-in. at 2 MHz, Real-Time (P16H_RT) 0.2 (OHMM) 2000	Coherence at Compressional Peak, Real-Time (CHCO_RT) -4 (----) 1











200 **ROP*5 (ROP5)** (M/HR) 0

ARC BHCorr Phase-Shift Resistivity 16-in. at 2 MHz, Real-Time (P16H_RT)

Coherence at Compressional Peak, Real-Time (CHCO_RT)

ARC Gamma Ray, Real-Time (ARC_GR_RT) (GAPI) 200	0.2 (OHMM) 2000 ARC BHCorr Phase-Shift Resistivity 28-in. at 2 MHz, Real-Time (P28H_RT) 0.2 (OHMM) 2000	-4 (----) 1 Delta-T Compressional, Real-Time (DTCO_RT) 140 (US/F) 40
	ARC BHCorr Phase-Shift Resistivity 40-in. at 2 MHz, Real-Time (P40H_RT) 0.2 (OHMM) 2000 ARC BHCorr Attenuation Resistivity 40-in. at 2 MHz, Real-Time (A40H_RT) 0.2 (OHMM) 2000	
PIP SUMMARY ┆ ARC GRAPP PIP ┆ IMP RP16 PIP		