

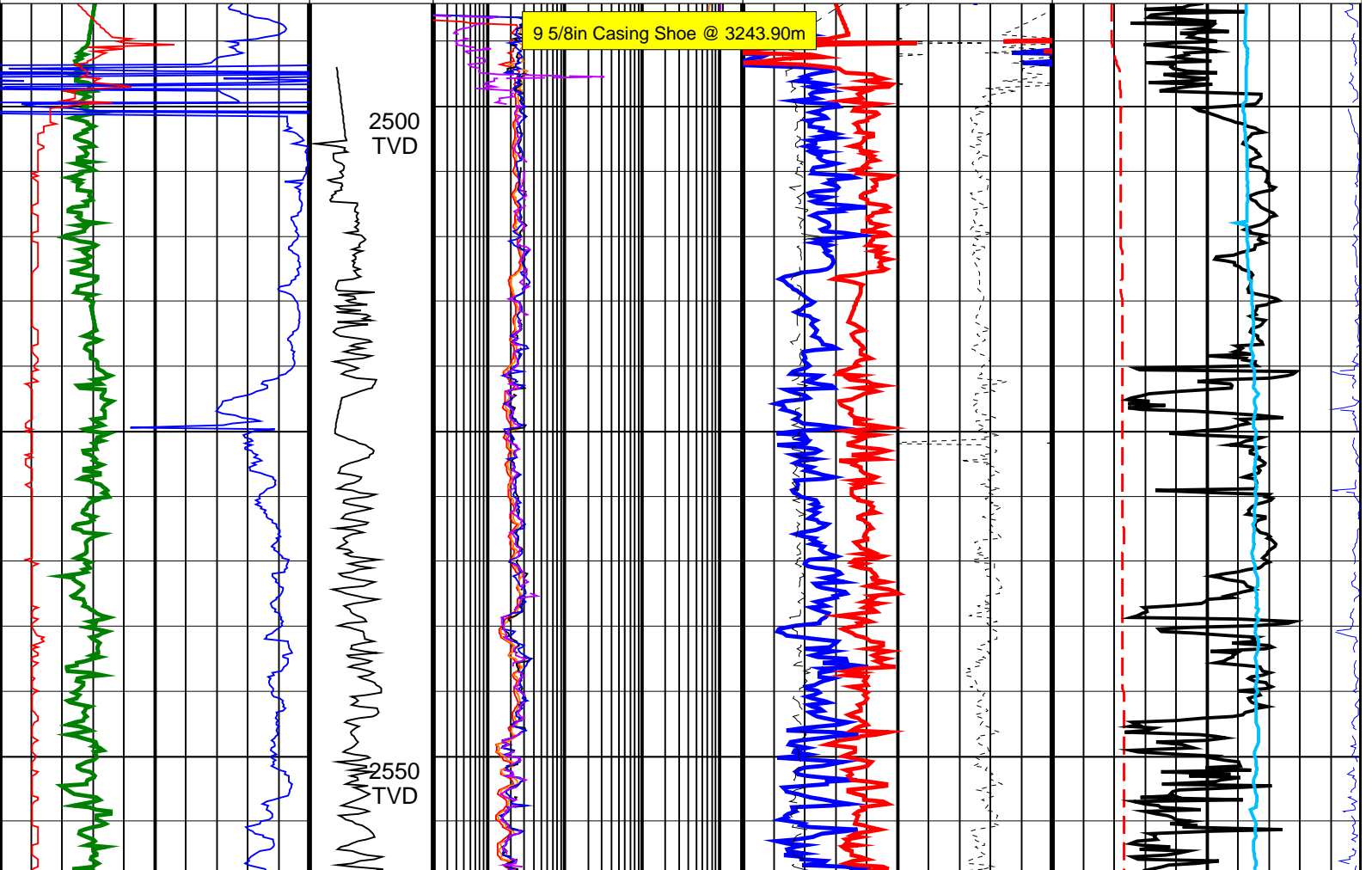
Elver-1 EcoScope Service RT 500TVD

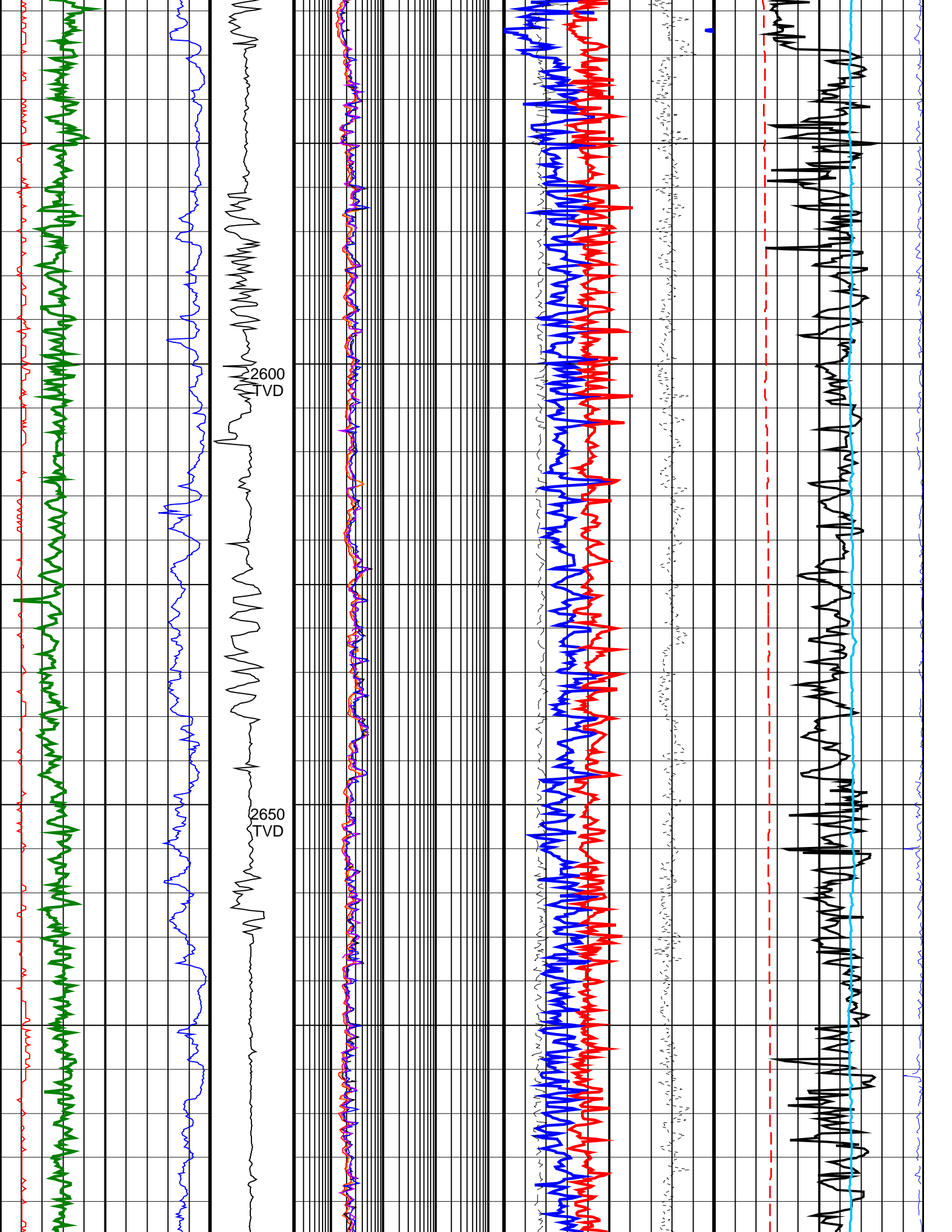
Format: ECO-SON-GVR_500TVD_RT

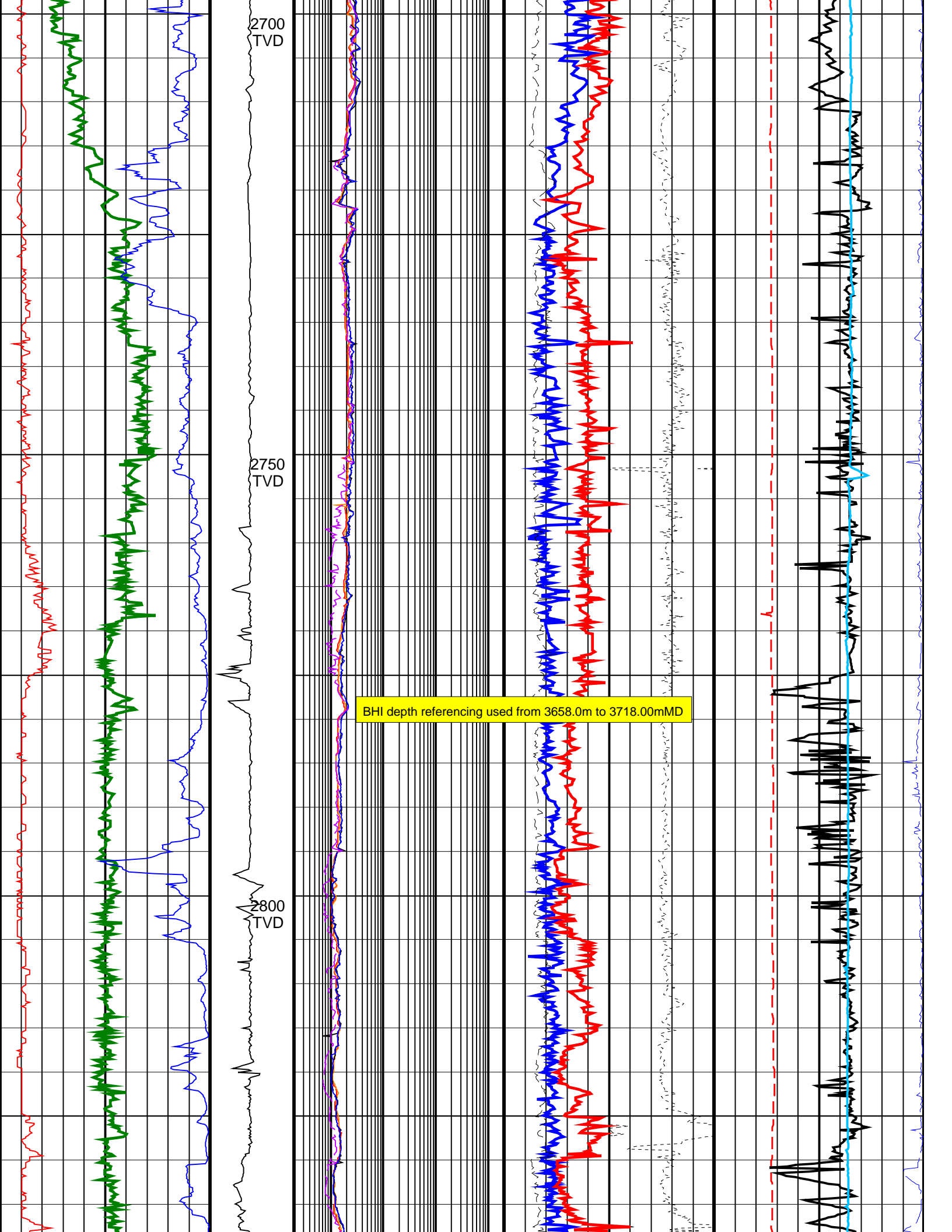
Vertical Scale: 1:500

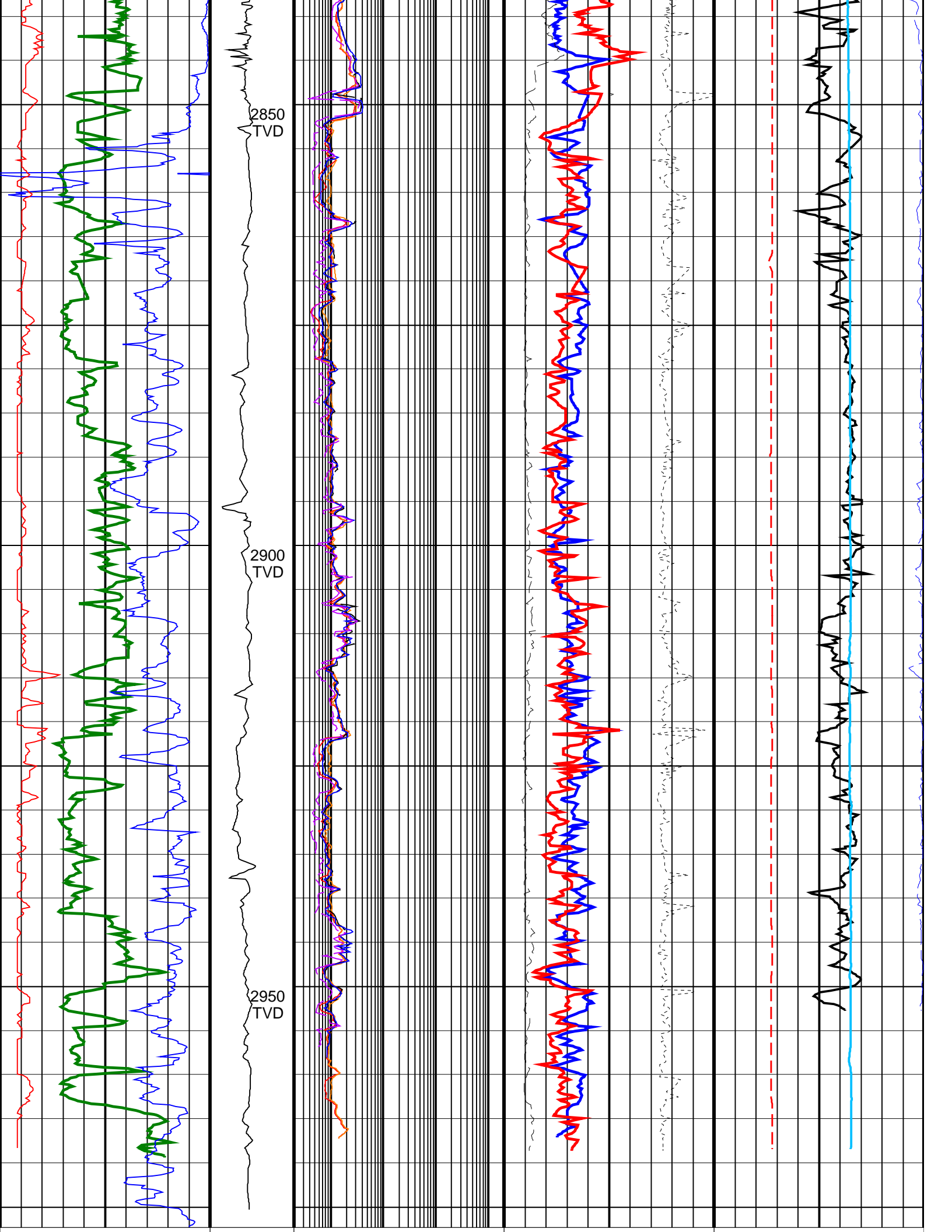
Graphics File Created: 05-Jan-2009 13:15

	<p style="color: purple;">Shallow Button Resistivity, Real-Time (RES_BS_RT)</p> <p style="color: purple;">0.2 (OHMM) 2000</p>			<p style="color: cyan;">Equivalent Circulating Density, Real-Time (ECD_ECO_RT)</p> <p style="color: cyan;">0 (G/C3) 2</p>
	<p style="color: blue;">Deep Button Resistivity, Real-Time (RES_BD_RT)</p> <p style="color: blue;">0.2 (OHMM) 2000</p>			
<p style="color: red;">Ultrasonic Caliper, Average Diameter, Real-Time, Recomputed at Surface (UCAV_ECO_RT)</p> <p style="color: red;">8 (IN) 13</p>	<p style="color: black;">Ring Resistivity, Real-Time (RES_RING_RT)</p> <p style="color: black;">0.2 (OHMM) 2000</p>	<p style="color: black;">Photoelectric Factor, Bottom, Real-Time, Computed Downhole (PEB_DH_ECO_RT)</p> <p style="color: black;">0 (----) 10</p>	<p style="color: black;">Bulk Density Correction, Bottom, Real-Time Computed Downhole (DRHB_DH_ECO_RT)</p> <p style="color: black;">-0.25 (G/C3) 0.25</p>	<p style="color: black;">Delta-T Compressional, Real-Time (DTCO_RT)</p> <p style="color: black;">40 (US/F) 140</p>
<p style="color: green;">Gamma Ray, Average, Real-Time (GRMA_ECO_RT)</p> <p style="color: green;">0 (GAPI) 200</p>	<p style="color: orange;">ARC Phase Shift Resistivity 40 inch at 2 MHz, Real-Time (P40H_ECO_RT)</p> <p style="color: orange;">0.2 (OHMM) 2000</p>	<p style="color: red;">Bulk Density, Bottom, Real-Time, Computed Downhole (ROBB_DH_ECO_RT)</p> <p style="color: red;">1.95 (G/C3) 2.95</p>		<p style="color: blue;">Coherence at Compressional Peak, Real-Time (CHCO_RT)</p> <p style="color: blue;">-9 (----) 1</p>
<p style="color: blue;">ROP*5 (ROP5)</p> <p style="color: blue;">200 (M/HR) 0</p>	<p style="color: red;">ARC Phase Shift Resistivity 16 inch at 2 MHz, Real-Time (P16H_ECO_RT)</p> <p style="color: red;">0.2 (OHMM) 2000</p>	<p style="color: blue;">Best Thermal Neutron Porosity, Average, Real-Time (BPHI_ECO_RT)</p> <p style="color: blue;">45 (PU) -15</p>	<p style="color: red;">Downhole Annulus Temperature, Real Time, Computed Downhole (DHAT_DH_ECO_RT)</p> <p style="color: red;">0 (DEGC) 200</p>	
<p style="color: black;">MWD Collar RPM (CRPM_RT) (RPM)</p> <p style="color: black;">0 400</p>				









<p>ROP*5 (ROP5) 200 (M/HR) 0</p>	<p>MWD Collar RPM (CRPM_RT) (RPM) 0 400</p>	<p>ARC Phase Shift Resistivity 16 inch at 2 MHz, Real-Time (P16H_ECO_RT) 0.2 (OHMM) 2000</p>	<p>Best Thermal Neutron Porosity, Average, Real-Time (BPHI_ECO_RT) 45 (PU) -15</p>	<p>Downhole Annulus Temperature, Real Time, Computed Downhole (DHAT_ DH_ECO_RT) - 200 0 (DEGC)</p>
<p>Gamma Ray, Average, Real-Time (GRMA_ECO_RT) 0 (GAPI) 200</p>		<p>ARC Phase Shift Resistivity 40 inch at 2 MHz, Real-Time (P40H_ECO_RT) 0.2 (OHMM) 2000</p>	<p>Bulk Density, Bottom, Real-Time, Computed Downhole (ROBB_DH_ECO_ RT) 1.95 (G/C3) 2.95</p>	<p>Coherence at Compressional Peak, Real-Time (CHCO_RT) -9 (----) 1</p>
<p>Ultrasonic Caliper, Average Diameter, Real-Time, Recomputed at Surface (UCAV_ECO_RT) 8 (IN) 13</p>		<p>Ring Resistivity, Real-Time (RES_RING_RT) 0.2 (OHMM) 2000</p>	<p>Photoelectric Factor, Bottom, Real-Time, Computed Downhole (PEB_DH_ ECO_RT) 0 (----) 10 -0.25 0.25</p>	<p>Delta-T Compressional, Real-Time (DTCO_RT) 40 (US/F) 140</p>
		<p>Deep Button Resistivity, Real-Time (RES_BD_RT) 0.2 (OHMM) 2000</p> <p>Shallow Button Resistivity, Real-Time (RES_BS_RT) 0.2 (OHMM) 2000</p>		<p>Equivalent Circulating Density, Real-Time (ECD_ ECO_RT) 0 (G/C3) 2</p>

IDEAL Version: ID13_0C_08
IDF