



Company : Apache

Well : Elver-1

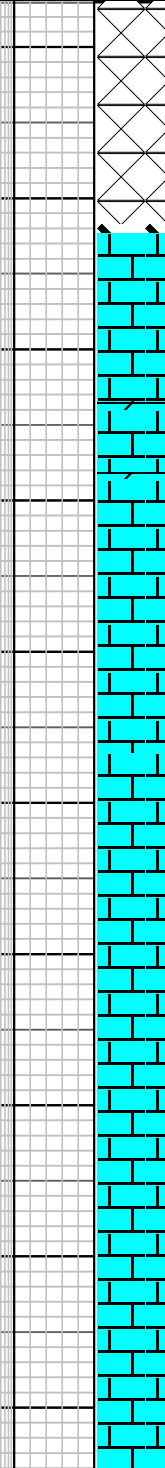
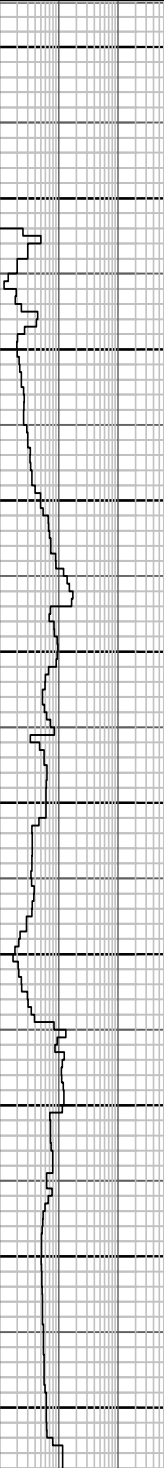
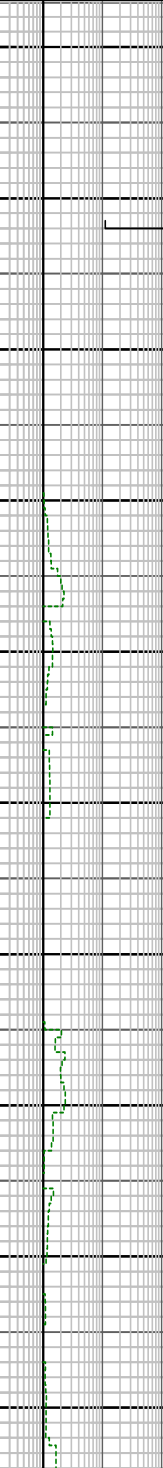
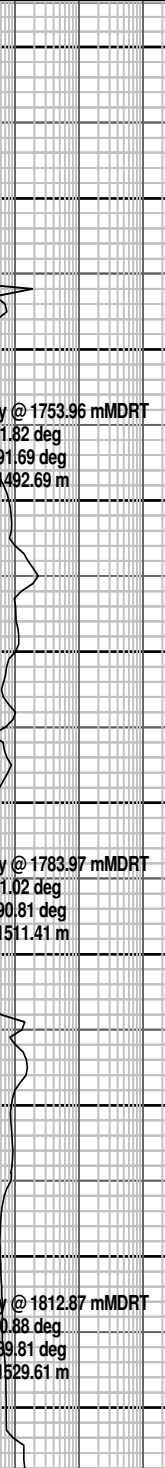
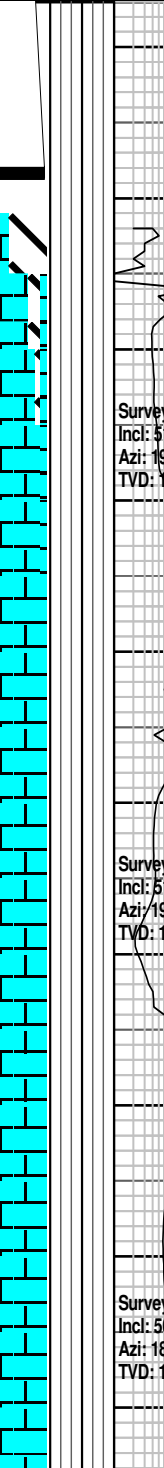
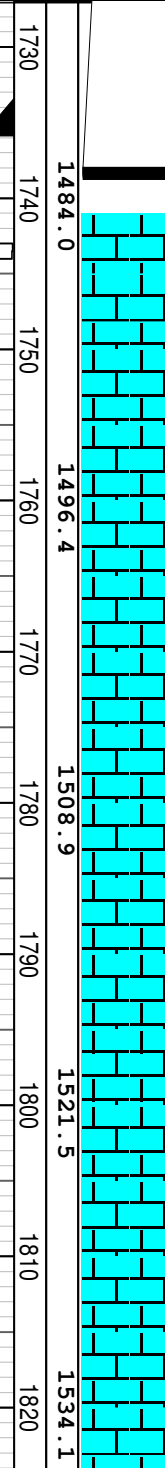
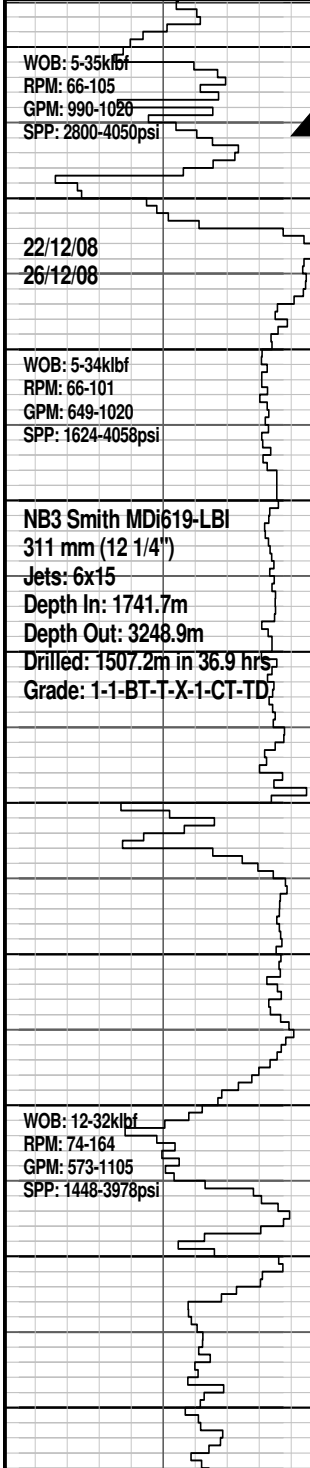
Interval : 1727.00 - 3811.21 meters

Created : 05/Jan/2009 9:59:21 AM

INTEQ

### FORMATION EVALUATION LOG

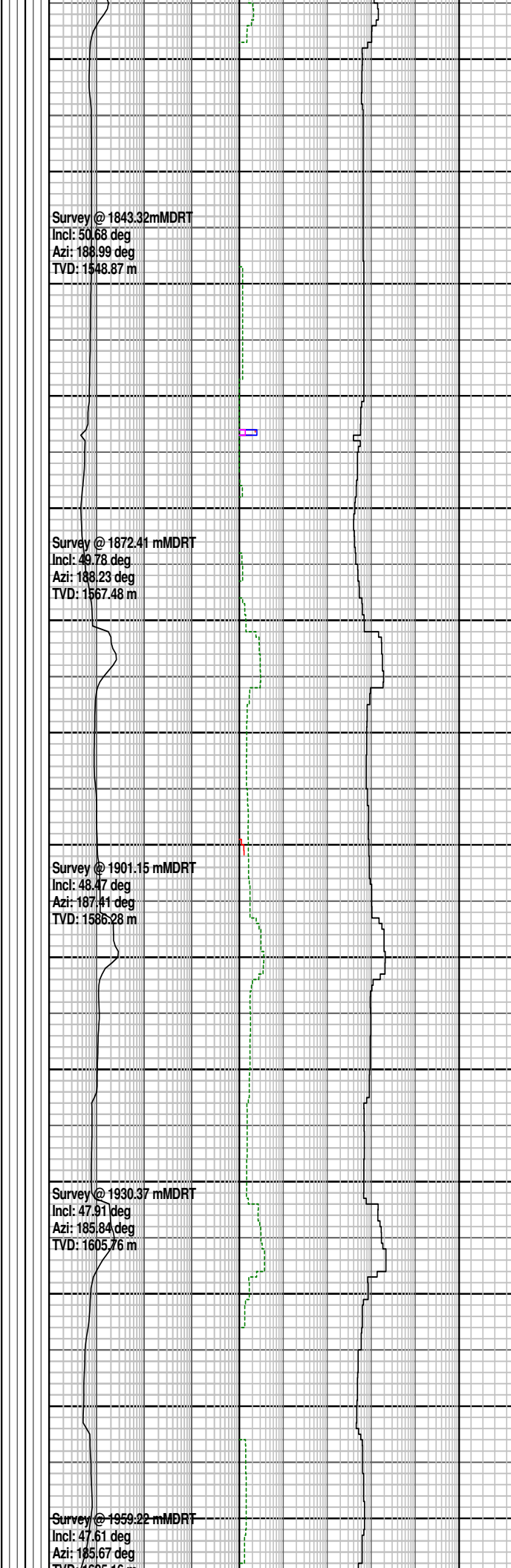
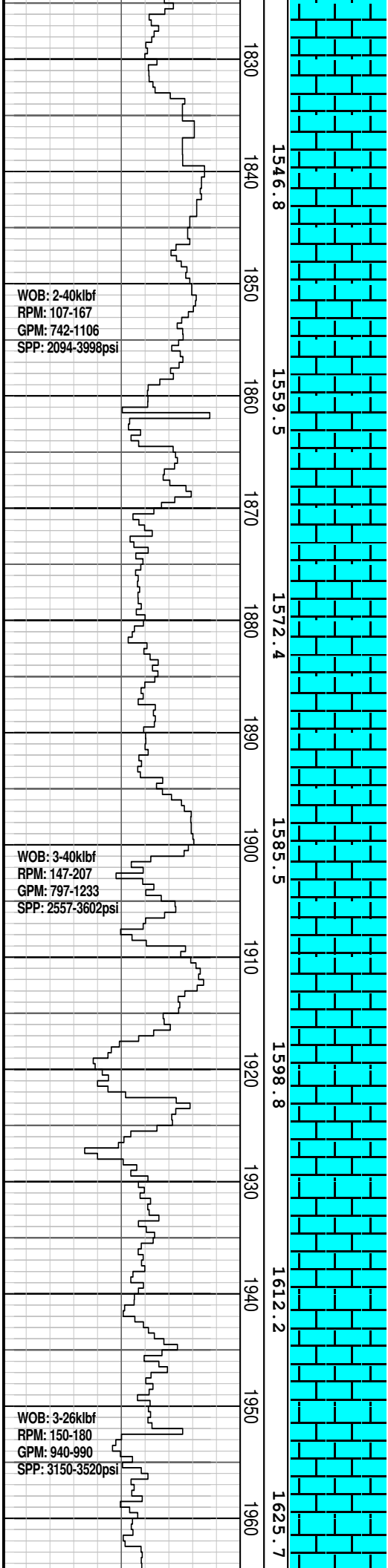
Drilling Rate		MD meters	TVDT meters	Cuttings Lithology	Visual Inferred Porosity	Oil Show	Gas Data		Chromatograph Data		Calcmetry	Interpreted Lithology	Lithology Description
ROP (m/hr)	ROP (m/hr)						Gas Hydrocarbon Avg %	Methane ppm	Ethane ppm	Propane ppm			
200	200	1730	1484.0				0.1   1   10   100	1	100000	1			
180	180	1740	1496.4				0.1   1   10   100	1	100000	1			
160	160	1750	1508.9				0.1   1   10   100	1	100000	1			
140	140	1760	1521.5				0.1   1   10   100	1	100000	1			
120	120	1770	1534.1				0.1   1   10   100	1	100000	1			
100	100	1780					0.1   1   10   100	1	100000	1			
80	80	1790					0.1   1   10   100	1	100000	1			
60	60	1800					0.1   1   10   100	1	100000	1			
40	40	1810					0.1   1   10   100	1	100000	1			
20	20	1820					0.1   1   10   100	1	100000	1			



Survey @ 1753.96 mMDRT  
Incl: 51.82 deg  
Azi: 191.69 deg  
TVD: 1492.69 m

Survey @ 1783.97 mMDRT  
Incl: 51.02 deg  
Azi: 190.81 deg  
TVD: 1511.41 m

Survey @ 1812.87 mMDRT  
Incl: 50.88 deg  
Azi: 189.81 deg  
TVD: 1529.61 m



CALCILUTITE: v lt gy-lt gnsh gy, off wh, slty i/p grd to CLSLT, tr v f glauc grs, tr forams, tr oo, sft-frm, amor-sbblky

CALCISILTITE: med lt gy-lt olv gy, lt gnsh gy, argl i/p grd to CLCLT, tr v f sd grs, tr v f glauc, tr micmic, sft-frm, sbfiss-sbblky

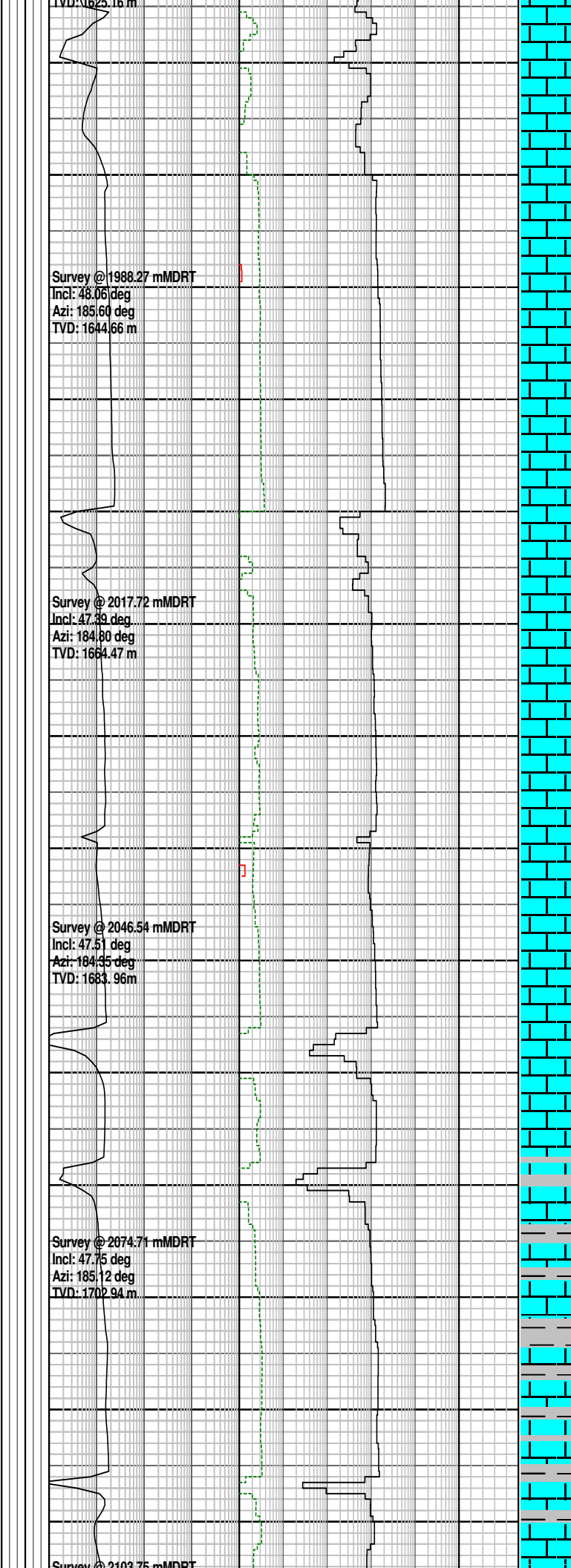
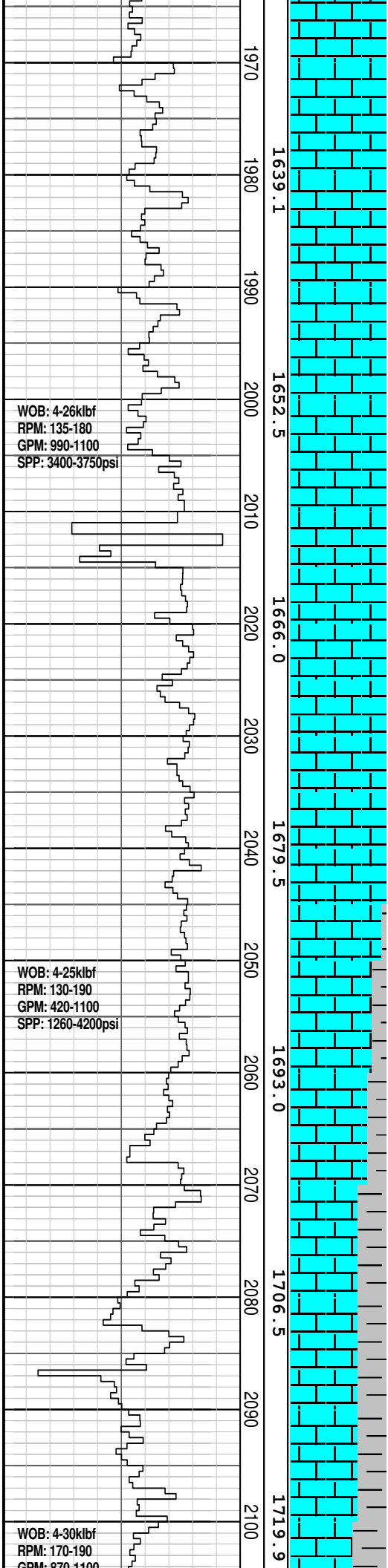
CALCILUTITE: v lt gy-lt gnsh gy, off wh, slty i/p grd to CLSLT, tr v f glauc grs, tr forams, tr oo, sft-frm, amor-sbblky

CALCARENITE: v lt gy-lt gnsh gy, off wh-pl yel org, tr f-crs sbang qtz grs, slty i/p grd to CLSLT, tr v f glauc grs, frm-mod hd, p vis por, no hydrc fluor

CALCISILTITE: med lt gy-lt olv gy, lt gnsh gy, argl i/p grd to CLCLT, tr v f sd grs, tr v f glauc, tr micmic, sft-frm, sbfiss-sbblky

CALCARENITE: v lt gy-lt gnsh gy, off wh-pl yel org, tr f-crs sbang qtz grs, slty i/p grd to CLSLT, tr v f glauc grs, frm-mod hd, p vis por, no hydrc fluor

CALCISILTITE: med lt gy-lt olv gy, lt gnsh gy, argl i/p grd to CLCLT, tr v f sd grs, tr v f glauc, tr micmic, sft-frm, sbfiss-sbblky



**CALCARENITE:** v lt gy-lt gnsh gy, off wh-pl yel org, tr f-crs sbang qtz grs, slty i/p grd to CLSLT, tr v f glauc grs, frm-mod hd, p vis por, no hydc fluor

**CALCILUTITE:** v lt gy-lt gnsh gy, off wh, slty i/p grd to CLSLT, tr v f glauc grs, tr forams, tr oo, sft-frm, amor-sbblky

**CALCARENITE:** v lt gy-lt gnsh gy, off wh-pl yel org, tr f-crs sbang qtz grs, slty i/p grd to CLSLT, tr v f glauc grs, frm-mod hd, p vis por, no hydc fluor

**CALCILUTITE:** v lt gy-lt gnsh gy, off wh, slty i/p grd to CLSLT, tr v f glauc grs, tr forams, tr oo, sft-frm, amor-sbblky

MW: 1.15	FV: 69
PV: 15	YP: 34
pH: 11.2	CK: 6.0
GELS: 8/9/11	CL: 48000

**CALCAREOUS CLAYSTONE:** med gy- lt olv gy, v calc grd to CLCLT, tr micmic, tr v f glauc, slty, sft-dom frm, sbblky-blky

**CALCILUTITE:** v lt gy-lt gnsh gy, off wh, slty i/p grd to CLSLT, tr v f glauc grs, tr forams, tr oo, sft-frm, amor-sbblky

**CALCISILTITE:** med lt gy-lt olv gy, lt gnsh gy, argl i/p grd to CLCLT, tr v f sd grs, tr v f glauc, tr micmic, sft-frm, sbfiss-sbblky

GPM: 870-1100

SPP: 3000-4220psi

WOB: 4-30klbf

RPM: 170-190

GPM: 870-1100

SPP: 3000-4220psi

WOB: 8-35klbf

RPM: 165-195

GPM: 880-1100

SPP: 3250-4200psi

2110  
2120  
2130  
2140  
2150  
2160  
2170  
2180  
2190  
2200  
2210  
2220  
2230  
2240

1733.4  
1746.8  
1760.3  
1773.7  
1787.2  
1800.7  
1814.1

Survey @ 2105.7 mMDRT

Incl: 47.80 deg

Azi: 184.62 deg

TVD: 1722.46 m

Survey @ 2133.30 mMDRT

Incl: 47.80 deg

Azi: 184.02 deg

TVD: 1742.31 m

Survey @ 2162.82 mMDRT

Incl: 47.68 deg

Azi: 184.06 deg

TVD: 1762.16 m

Survey @ 2191.69 mMDRT

Incl: 47.71 deg

Azi: 185.00 deg

TVD: 1781.59 m

Survey @ 2220.09 mMDRT

Incl: 47.67 deg

Azi: 186.56 deg

TVD: 1800.71 m

**CALCAREOUS CLAYSTONE:**  
med gy- lt olv gy, v calc grd to CLCLT, tr micmic, tr v f glauc, slty, sft-dom frm, sbblky-blky

**CALCISILTITE:** med lt gy-lt olv gy, lt gnsh gy, argl i/p grd to CLCLT, tr v f sd grs, tr v f glauc, tr micmic, sft-frm, sbfiss-sbblky

**CALCAREOUS CLAYSTONE:**  
med gy- lt olv gy, abdt calc grd to CLCLT, tr micmic, tr v f glauc, tr v f carb spks, sft-frm, sbblky-blky

**CALCISILTITE:** med lt gy-lt olv gy, lt gnsh gy, com slty, argl i/p grd to CLCLT, tr v f sd grs, tr v f glauc, tr micmic, sft-frm, sbfiss-sbblky

**CALCILUTITE:** v lt gy-lt gnsh gy, off wh, slty i/p grd to CLSLT, argl i/p grd to CALC CLYST, tr v f glauc grs, tr v f carb spks, sft-frm, amor-sbblky

**CALCAREOUS CLAYSTONE:**  
lt gy- lt olv gy, abdt grd to CLCLT, tr micmic, tr v f glauc, tr v f carb spks, dom sft-fr, amor-sbblky

**CALCISILTITE:** med lt gy-lt olv gy, lt gnsh gy, com slty, argl i/p grd to CLCLT, tr v f sd grs, tr v f glauc, tr micmic, sft-frm, sbfiss-sbblky

**CALCAREOUS CLAYSTONE:**  
med gy- lt olv gy, v calc grd to CLCLT, tr micmic, tr v f glauc, tr v f carb spks, dom sft-frm, amor-sbblky

**CALCISILTITE:** med lt gy-lt olv gy, lt gnsh gy, com slty, argl i/p grd to CLCLT, tr v f sd grs, tr v f glauc, tr micmic, sft-frm, sbfiss-sbblky

slt-frm, amor-sbbly

WOB: 6-30klbf  
RPM: 170-190  
GPM: 1010-1030  
SPP: 4100-4200psi

2250  
1827.6  
2260  
2270  
2280  
2290  
2300  
1854.6  
2310  
2320  
1868.1  
2330  
2340  
1881.6  
2350  
2360  
1895.1  
2370  
2380  
1908.6

Survey @ 2248.12 mMDRT  
Incl: 47.64 deg  
Azi: 188.19 deg  
TVD: 1819.59 m

Survey @ 2276.75 mMDRT  
Incl: 47.48 deg  
Azi: 189.09 deg  
TVD: 1838.91 m

Survey @ 2306.28 mMDRT  
Incl: 47.61 deg  
Azi: 190.30 deg  
TVD: 1858.84 m

Survey @ 2335.22 mMDRT  
Incl: 47.55 deg  
Azi: 192.06 deg  
TVD: 1878.37 m

Survey @ 2364.15 mMDRT  
Incl: 47.47 deg  
Azi: 194.28 deg  
TVD: 1897.91 m

**CALCAREOUS CLAYSTONE:**  
med gy- lt olv gy, v calc grd to CLCLT, tr micmic, tr v f glauc, tr v f carb spks, dom sft-frm, amor-sbbly

**CALCISILTITE:** v lt gy-lt olv gy, grd to CLCLT, tr v f aren, tr v f glauc, tr micmic, tr v f carb spks, dom sft-frm, amor-sbbly

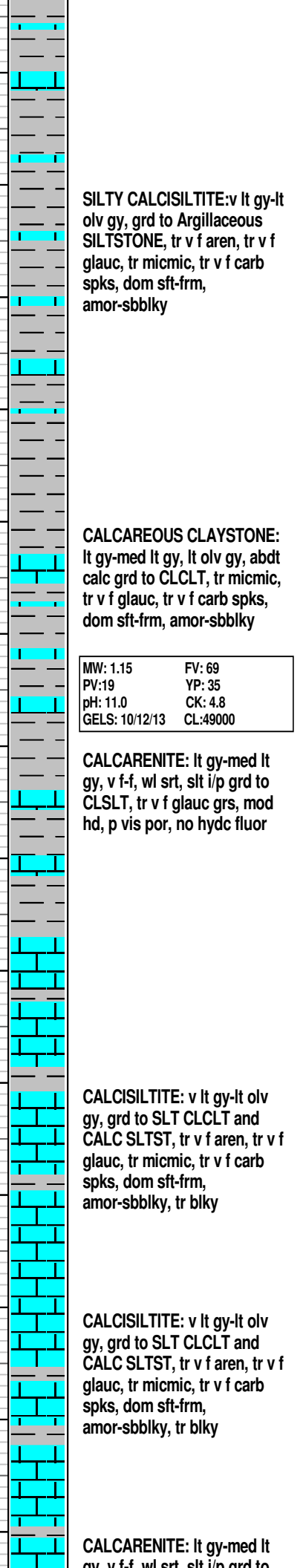
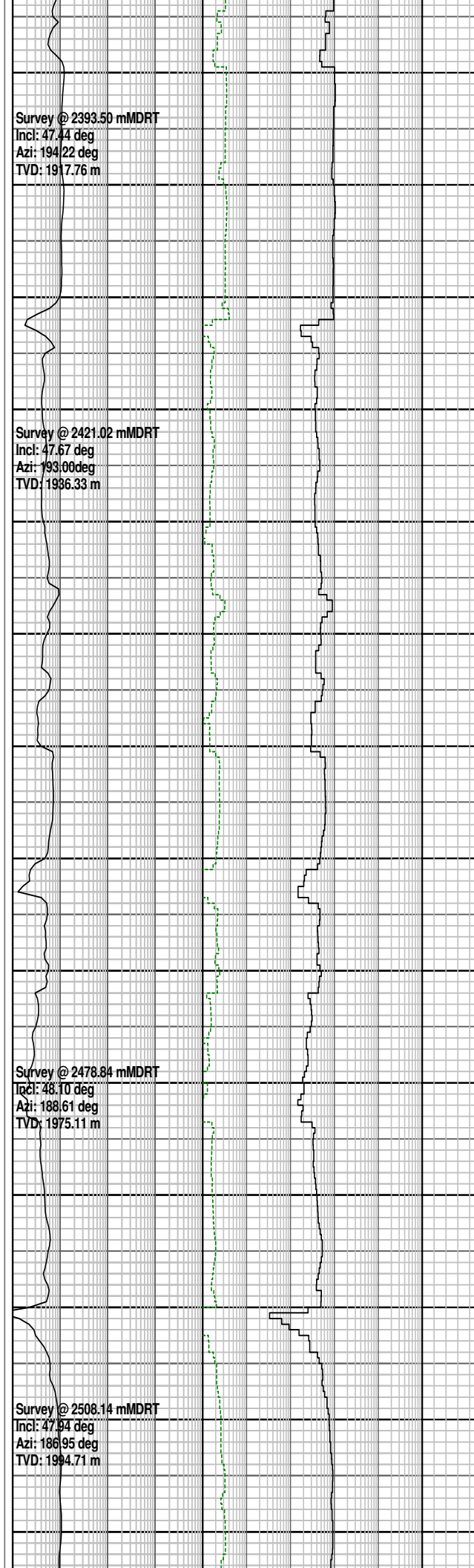
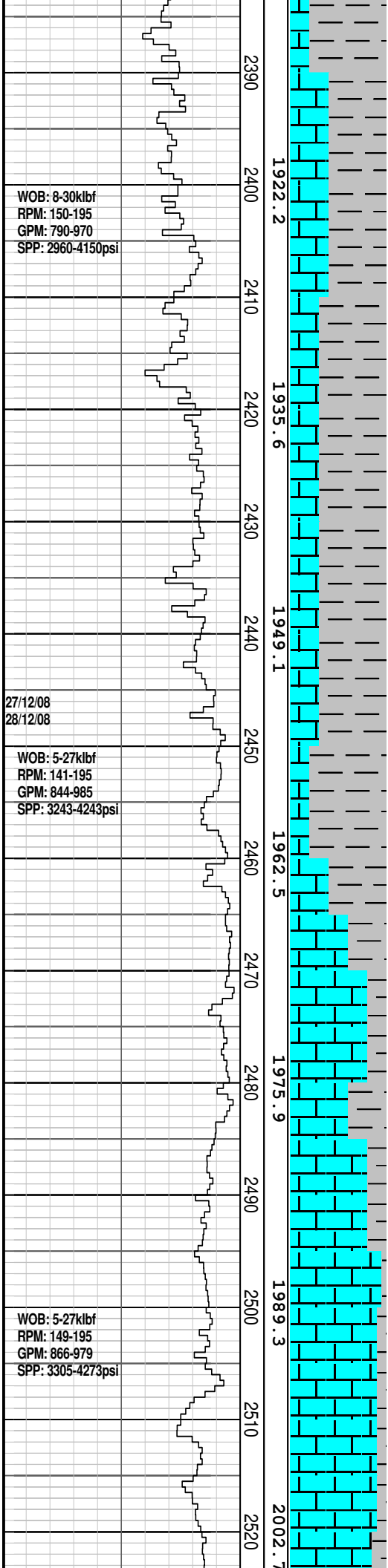
**CALCAREOUS CLAYSTONE:**  
lt gy-lt olv gy, abdt calc grd to CLCLT, tr micmic, tr v f glauc, tr v f carb spks, dom sft-frm, amor-sbbly

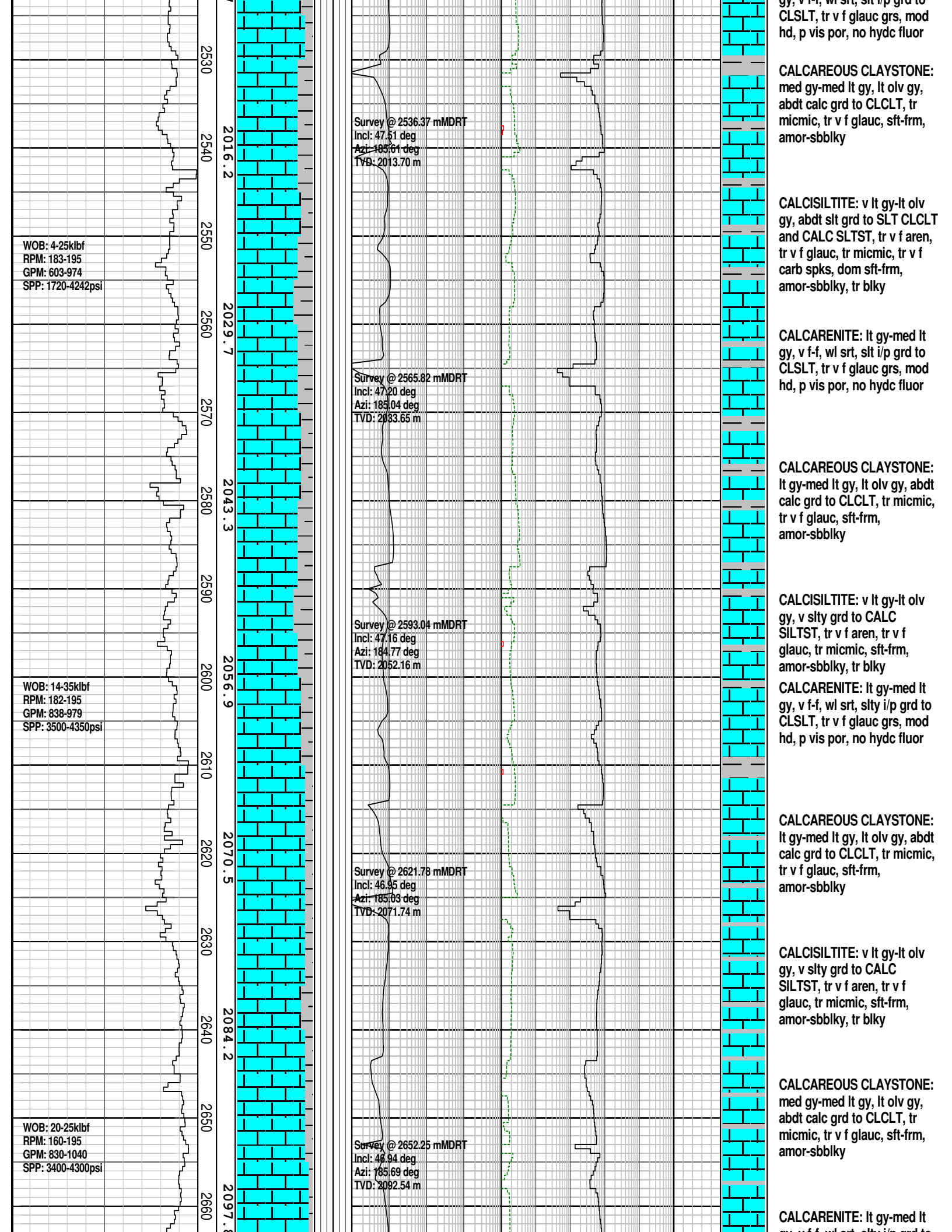
**CALCAREOUS CLAYSTONE:**  
lt gy-med lt gy, lt olv gy, abdt calc grd to CALCILUTITE, tr micmic, tr v f glauc, tr v f carb spks, dom sft-frm, amor-sbbly

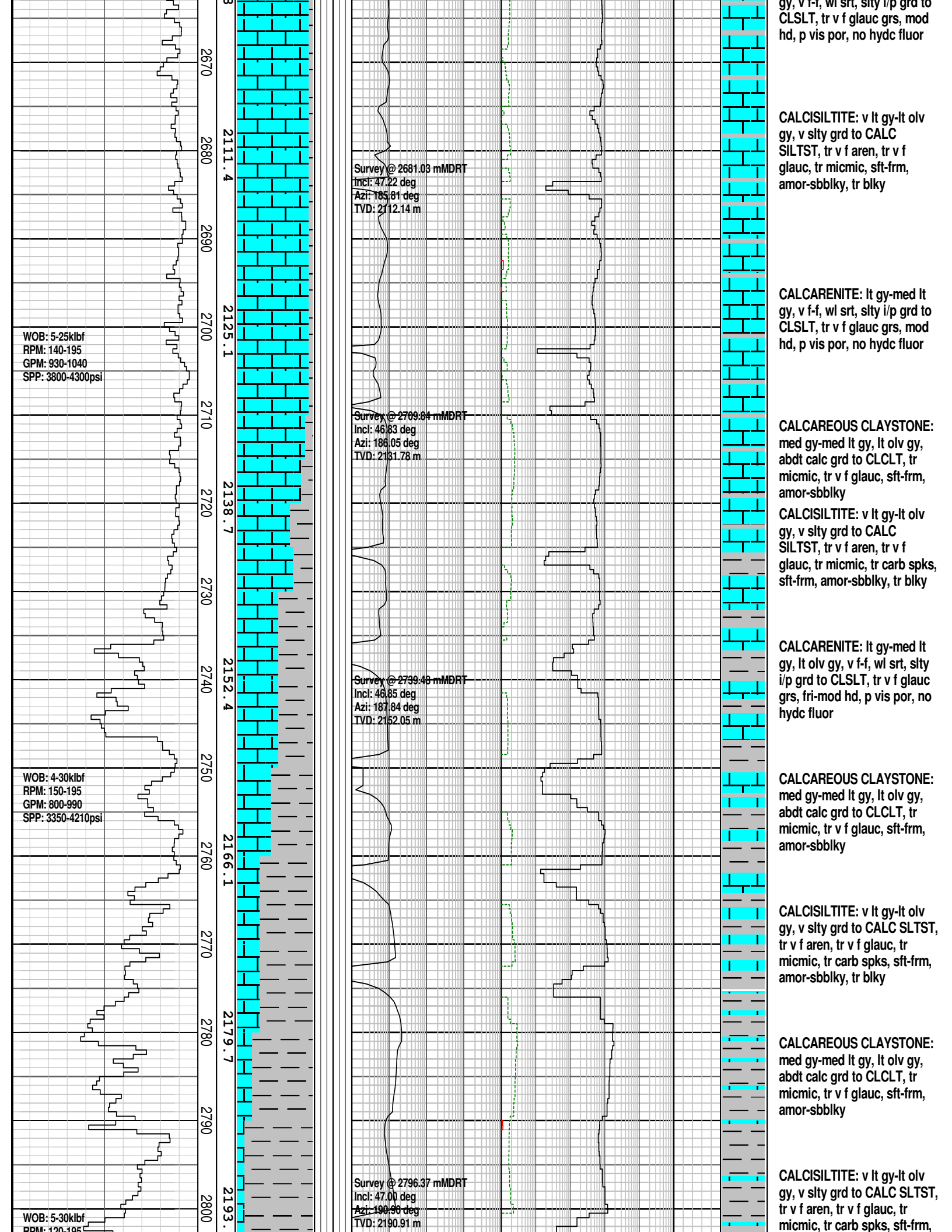
MW: 1.16	FV: 64
PV: 19	YP: 35
pH: 11.0	CK: 4.8
GELS: 10/12/13	CL: 49000

**CALCAREOUS CLAYSTONE:**  
lt gy-med lt gy, lt olv gy, abdt calc grd to CALCILUTITE, tr micmic, tr v f glauc, tr v f carb spks, dom sft-frm, amor-sbbly

**CALCAREOUS CLAYSTONE:**  
lt gy-med lt gy, lt olv gy, abdt calc grd to CLCLT, tr micmic, tr v f glauc, tr v f carb spks, dom sft-frm, amor-sbbly









RFM: 120-133  
GPM: 820-1050  
SPP: 3200-4200psi

WOB: 6-30klbf  
RPM: 100-195  
GPM: 890-1200  
SPP: 3820-4250psi

WOB: 7-30klbf  
RPM: 129-194  
GPM: 897-909  
SPP: 4046-4194psi

28/12/08  
29/12/08

4  
2810  
2820  
2830  
2840  
2850  
2860  
2870  
2880  
2890  
2900  
2910  
2920  
2930  
2940

2207.0

2220.6

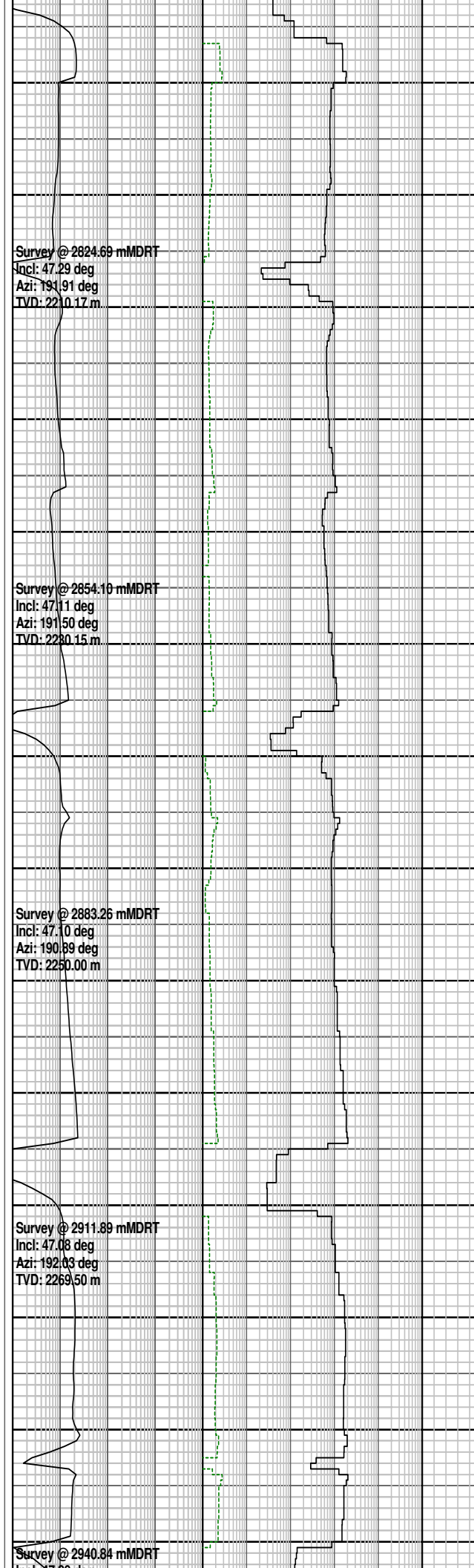
2234.2

2247.8

2261.4

2275.0

2288.0



Survey @ 2824.69 mMDRT  
Incl: 47.29 deg  
Azi: 191.91 deg  
TVD: 2210.17 m

Survey @ 2854.10 mMDRT  
Incl: 47.11 deg  
Azi: 191.50 deg  
TVD: 2230.15 m

Survey @ 2883.26 mMDRT  
Incl: 47.10 deg  
Azi: 190.89 deg  
TVD: 2250.00 m

Survey @ 2911.89 mMDRT  
Incl: 47.08 deg  
Azi: 192.03 deg  
TVD: 2269.50 m

Survey @ 2940.84 mMDRT

amor-sbblky, tr blkly

**CALCAREOUS CLAYSTONE:**  
med gy-med lt gy, lt olv gy,  
abdt calc grd to CLCLT, tr  
micmic, tr v f glauc, sft frm,  
amor-sbblky

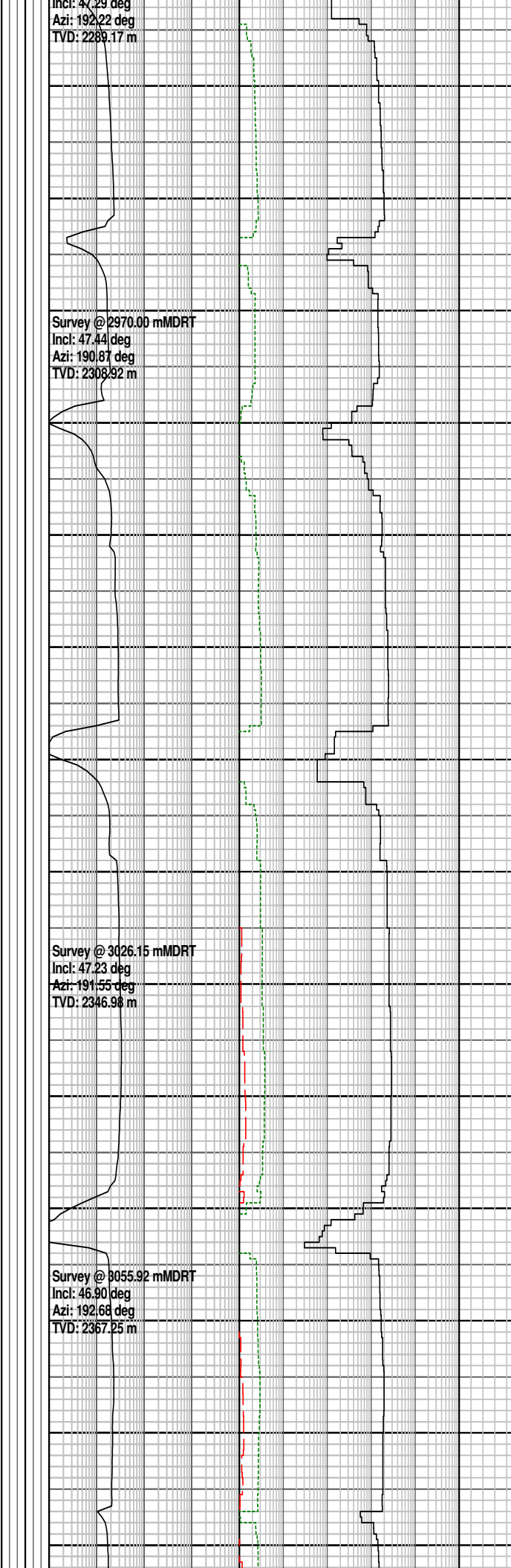
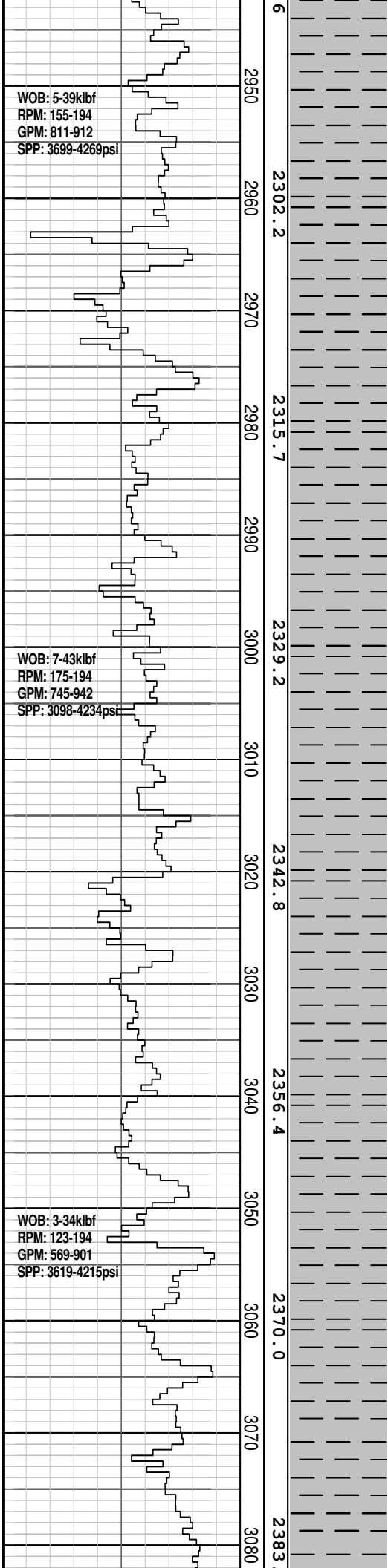
**CALCAREOUS CLAYSTONE:**  
med gy-med lt gy, lt olv gy,  
abdt calc grd to CLCLT, tr  
micmic, tr v f glauc, tr v f carb  
spks, sft frm, amor-sbblky

**CALCAREOUS CLAYSTONE:**  
med gy-med lt gy, lt olv gy,  
abdt calc grd to CLCLT, tr  
micmic, tr v f glauc, tr v f carb  
spks, sft frm, amor-sbblky

**CALCAREOUS CLAYSTONE:**  
med gy-med lt gy, lt olv gy,  
abdt calc grd to CLCLT, tr  
micmic, tr v f glauc, tr v f carb  
spks, sft frm, amor-sbblky

MW: 1.16	FV: 61
PV: 19	YP: 30
pH: 10.8	CK: 6.0
GELS: 9/12/15	CL: 51000

**CALCAREOUS CLAYSTONE:**



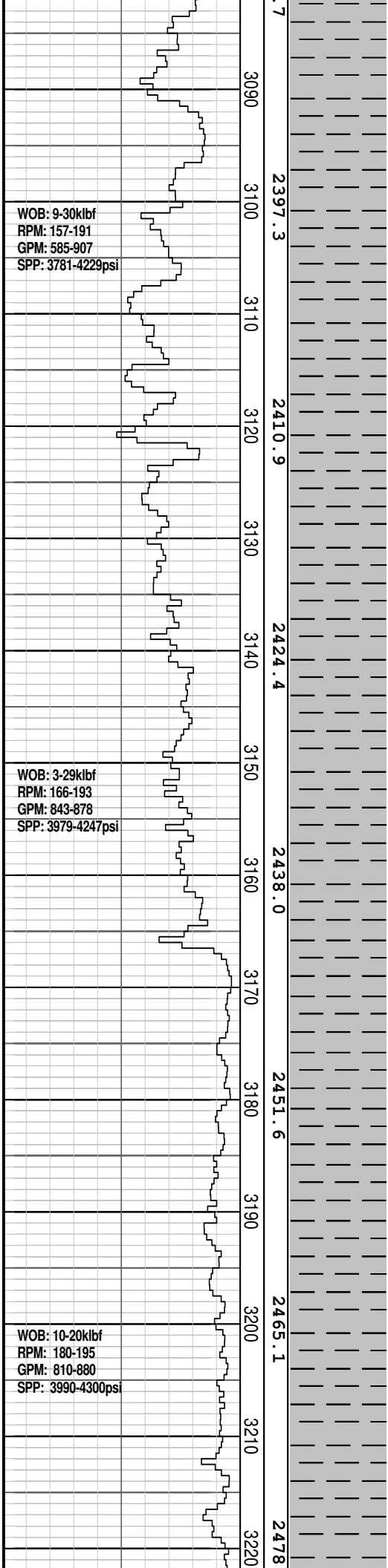
med gy-med lt gy, lt olv gy,  
abdt calc grd to CLCLT, tr  
micmic, tr v f glauc, tr v f carb  
spks, sft frm, amor-sbbkly

**CALCAREOUS CLAYSTONE:**  
med gy-med lt gy, lt olv gy,  
abdt calc grd to CLCLT, tr  
micmic, tr v f glauc, tr v f carb  
spks, sft frm, amor-sbbkly

**CALCAREOUS CLAYSTONE:**  
med gy-med lt gy, lt olv gy,  
abdt calc grd to CLCLT, tr  
micmic, tr v f glauc, tr v f carb  
spks, sft frm, amor-sbbkly

**CALCAREOUS CLAYSTONE:**  
med gy-med lt gy, lt olv gy,  
abdt calc grd to CLCLT, tr  
micmic, tr v f glauc, tr v f carb  
spks, sft frm, amor-sbbkly

**CALCAREOUS CLAYSTONE:**  
med gy-med lt gy, lt olv gy,  
abdt calc grd to CLCLT, tr  
micmic, tr v f glauc, tr v f carb  
spks, sft frm, amor-sbbkly



Survey @ 3084.82 mMDRT  
Incl: 47.15 deg  
Azi: 192.29 deg  
TVD: 2386.96 m

Survey @ 3142.18 mMDRT  
Incl: 47.27 deg  
Azi: 192.87 deg  
TVD: 2425.92 m

Survey @ 3171.47 mMDRT  
Incl: 47.35 deg  
Azi: 193.07 deg  
TVD: 2445.78 m

Survey @ 3199.83 mMDRT  
Incl: 47.71 deg  
Azi: 192.78 deg  
TVD: 2464.93 m

**CALCAREOUS CLAYSTONE:**  
med gy-med lt gy, lt olv gy,  
abdt calc grd to CLCLT, tr  
micmic, tr v f glauc, tr v f-med  
carb spks, sft-frm,  
amor-sbblky

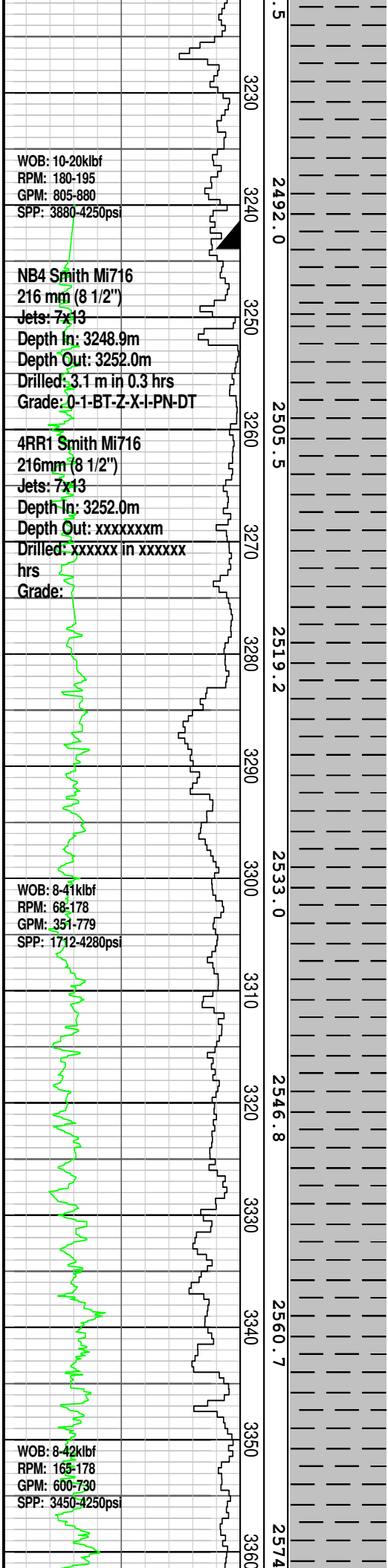
**CALCAREOUS CLAYSTONE:**  
med gy-med lt gy, lt olv gy,  
abdt calc grd to CLCLT, tr  
micmic, tr v f glauc, tr v f-med  
carb spks, tr microfos,  
sft-frm, amor-sbblky,

**CALCAREOUS CLAYSTONE:**  
med gy-med lt gy, lt olv gy,  
abdt calc grd to CLCLT, tr  
micmic, tr v f glauc, tr v f-med  
carb spks, tr microfos,  
sft-frm, amor-sbblky,

**CALCAREOUS CLAYSTONE:**  
med gy-med lt gy, lt olv gy,  
abdt calc grd to CLCLT, tr  
micmic, tr v f glauc, tr v f-med  
carb spks, tr microfos,  
sft-frm, amor-sbblky,

**CALCAREOUS CLAYSTONE:**  
med gy-med lt gy, lt olv gy,  
abdt calc grd to CLCLT, tr  
micmic, tr v f glauc, tr v f-med  
carb spks, tr microfos,  
sft-frm, amor-sbblky,

**CALCAREOUS CLAYSTONE:**  
med gy-med lt gy, lt olv gy,  
abdt calc grd to CLCLT, tr  
micmic, tr v f glauc, tr v f-med  
carb spks, tr dissem pyr, tr  
microfos, sft-frm,



WOB: 10-20klbf  
 RPM: 180-195  
 GPM: 805-880  
 SPP: 3880-4250psi

**NB4 Smith Mi716**  
 216 mm (8 1/2")  
 Jets: 7x13  
 Depth In: 3248.9m  
 Depth Out: 3252.0m  
 Drilled: 3.1 m in 0.3 hrs  
 Grade: 0-1-BT-Z-X-I-PN-DT

**4RR1 Smith Mi716**  
 216mm (8 1/2")  
 Jets: 7x13  
 Depth In: 3252.0m  
 Depth Out: xxxxxxxm  
 Drilled: xxxxxx in xxxxxx hrs  
 Grade:

WOB: 8-4klbf  
 RPM: 68-178  
 GPM: 351-779  
 SPP: 1712-4280psi

WOB: 8-42klbf  
 RPM: 165-178  
 GPM: 600-730  
 SPP: 3450-4250psi

Survey @ 3225.02 mMDRT  
 Incl: 47.61 deg  
 Azi: 192.02 deg  
 TVD: 2481.90 m

Survey @ 3258.55 mMDRT  
 Incl: 47.12 deg  
 Azi: 192.57 deg  
 TVD: 2504.60 m

Survey @ 3289.21 mMDRT  
 Incl: 46.56 deg  
 Azi: 190.31 deg  
 TVD: 2525.60 m

Survey @ 3318.02 mMDRT  
 Incl: 45.87 deg  
 Azi: 190.74 deg  
 TVD: 2545.50 m

Survey @ 3347.09 mMDRT  
 Incl: 46.75 deg  
 Azi: 193.83 deg  
 TVD: 2565.60 m

amor-sbbkly,  
**CALCAREOUS CLAYSTONE:**  
 med gy-med lt gy, lt olv gy,  
 abdt calc grd to CLCLT, tr  
 micmic, tr v f glauc, tr v f-med  
 carb spks, tr com pyr nod, tr  
 microfos, sft-frm,  
 amor-sbbkly,

244mm (9 5/8") casing shoe @ 3243.9 mMDRT

Reached 311mm (12 1/4") section TD @ 3248.9 mMDRT @ 1300 hrs on 29th December 2008

POOH @3252.0 m to change the failed MWD tool

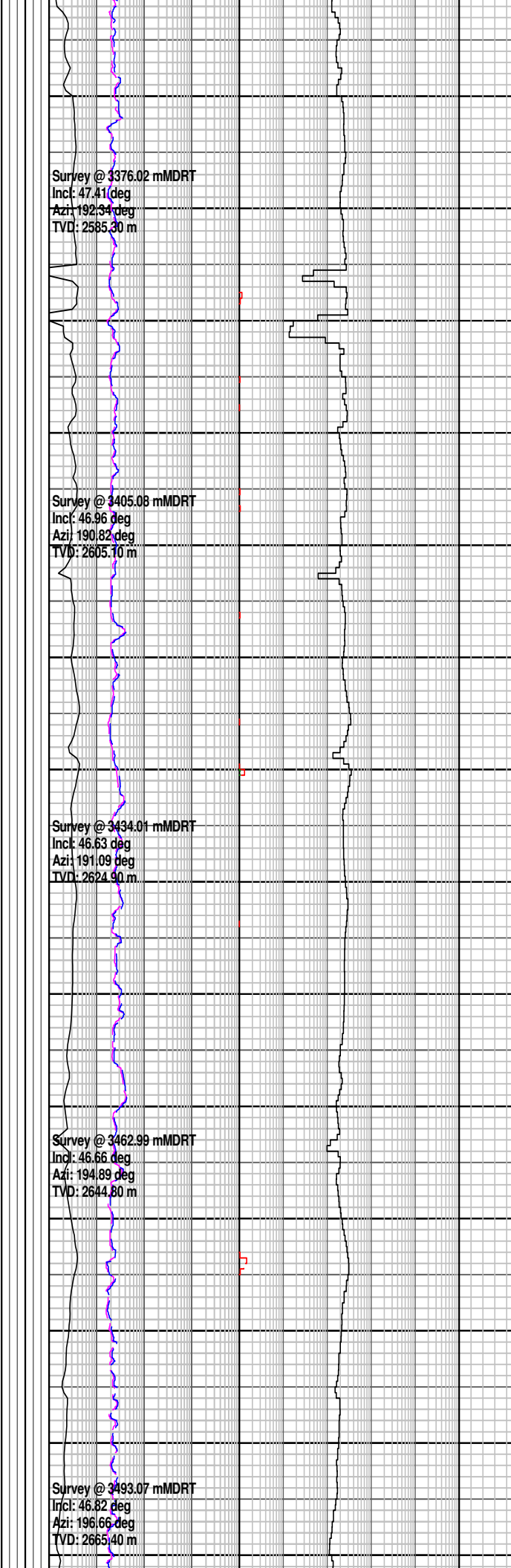
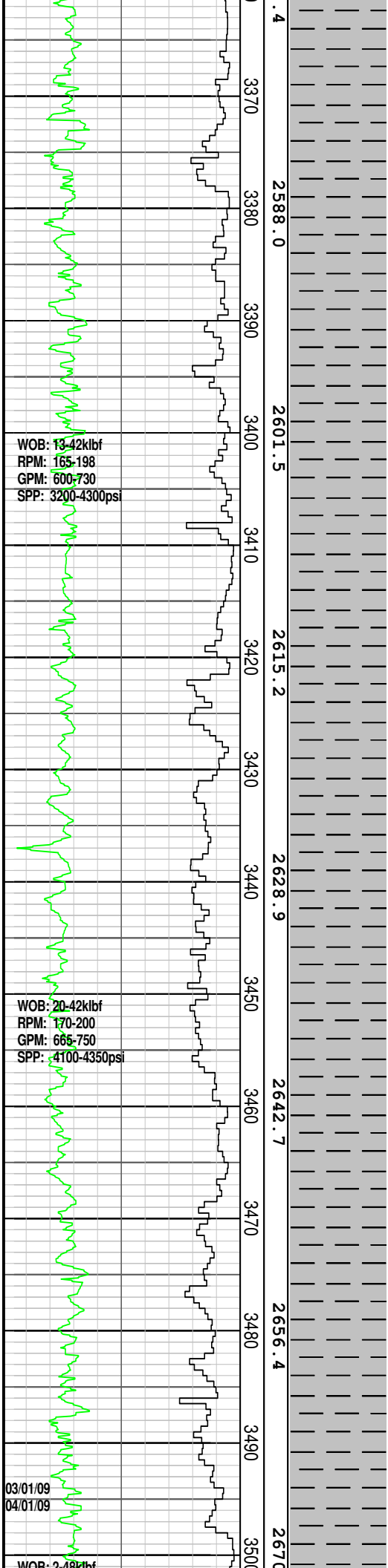
**CALCAREOUS CLAYSTONE:**  
 med gy-med lt gy, lt olv gy,  
 abdt calc grd to CLCLT, tr  
 micmic, tr v f glauc, tr v f-med  
 carb spks, tr dissem  
 pyr, tr ang qtz, tr microfos,  
 sft-frm, amor-sbbkly

**CALCAREOUS CLAYSTONE:**  
 med gy-med lt gy, lt olv gy,  
 abdt calc grd to MARL, tr  
 micmic, tr v f glauc, tr v f-med  
 carb spks, tr dissem  
 pyr, tr ang qtz, tr microfos,  
 sft-frm, amor-sbbkly

**CALCAREOUS CLAYSTONE:**  
 med gy-med lt gy, lt olv gy,  
 abdt calc grd to MARL, tr  
 micmic, tr v f glauc, tr v f-med  
 carb spks, tr dissem  
 pyr, tr ang qtz, tr microfos,  
 sft-frm, amor-sbbkly

**CALCAREOUS CLAYSTONE:**  
 med gy-med lt gy, lt olv gy,  
 abdt calc grd to MARL, tr  
 micmic, tr v f glauc, tr v f-med  
 carb spks, tr dissem  
 pyr, tr ang qtz, tr microfos,  
 sft-frm, amor-sbbkly

**CALCAREOUS CLAYSTONE:**  
 med gy-med lt gy, lt olv gy, tr  
 micmic, tr v f glauc, tr v f-med  
 carb spks, tr pyr nod, tr ang  
 qtz, tr microfos, sft-frm,  
 amor-sbbkly, sbfiss i/p



**CALCAREOUS CLAYSTONE:**  
med gy-med lt gy, lt olv gy, tr micmic, tr v f glauc, tr v f-med carb spks, tr pyr nod, tr ang qtz, tr microfos, sft-frm, amor-sbblky, sbfiss i/p

**CALCAREOUS CLAYSTONE:**  
med gy-med lt gy, lt olv gy, tr micmic, tr v f aren, tr v f glauc, tr v f-med carb spks, tr pyr nod, tr ang qtz, tr microfos, sft-frm, amor-sbblky, sbfiss i/p

**CALCAREOUS CLAYSTONE:**  
med lt gy-med dk gy, lt olv gy-lt gnsh gy, mod calc, slt i/p, tr imcmic, tr v f glauc, tr v f aren, tr v f carb spks, dom frm-mod hd, amor-sbblky, tr sbfiss i/p

**CALCAREOUS CLAYSTONE:**  
med lt gy-med dk gy, lt olv gy-lt gnsh gy, mod calc, slt i/p, tr imcmic, tr v f glauc, tr v f aren, tr v f carb spks, tr nod-dissem pyr, dom frm-mod hd, amor-sbblky

**CALCAREOUS CLAYSTONE:**  
med lt gy-med dk gy, lt olv gy-lt gnsh gy, mod calc, slt i/p, tr imcmic, tr v f glauc, tr v f aren, tr v f carb spks, tr dissem pyr, dom frm-mod hd, amor-sbblky

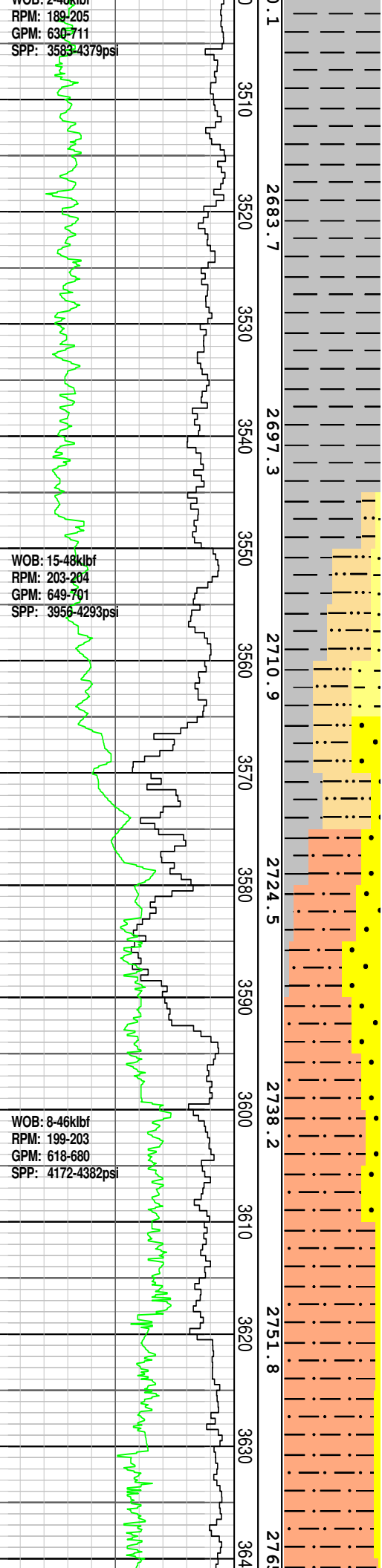
**CALCAREOUS CLAYSTONE:**  
med lt gy-med dk gy, lt olv gy-lt gnsh gy, mod calc, slt i/p, tr imcmic, tr v f glauc, tr v f aren, tr v f carb spks, tr dissem pyr, dom frm-mod hd, amor-sbblky

**CALCAREOUS CLAYSTONE:**  
med lt gy-med dk gy, lt olv gy-lt gnsh gy, mod calc, slt i/p, tr imcmic, tr v f glauc, tr v f aren, tr v f carb spks, tr dissem pyr, dom frm-mod hd, amor-sbblky

WOB: 240klbf  
RPM: 189-205  
GPM: 630-711  
SPP: 3583-4379psi

WOB: 15-48klbf  
RPM: 203-204  
GPM: 649-701  
SPP: 3956-4293psi

WOB: 8-46klbf  
RPM: 199-203  
GPM: 618-680  
SPP: 4172-4382psi



Survey @ 3520.17 mMDRT  
Incl: 47.19 deg  
Azi: 193.26 deg  
TVD: 2683.90 m

Survey @ 3578.15 mMDRT  
Incl: 47.03 deg  
Azi: 188.88 deg  
TVD: 2723.30 m

Survey @ 3634.59 mMDRT  
Incl: 46.98 deg  
Azi: 189.98 deg  
TVD: 2761.80 m

amor-sbbiky  
MW: 1.15 FV: 70  
PV: 19 YP: 31  
pH: 10.0 CK: 6.0  
GELS: 6/8/11 CL: 53000

**CALCAREOUS CLAYSTONE:**  
med lt gy-med dk gy, lt olv  
gy-lt gnsh gy, mod calc, slt  
i/p, tr imcmic, tr v f glauc, tr v  
f aren, tr v f carb spks, tr  
dissem pyr, dom frm-mod hd,  
amor-sbbiky

**CALCAREOUS CLAYSTONE:**  
med lt gy-med dk gy, lt olv  
gy, lt gnsh gy, mod calc, v slit,  
tr imcmic, tr v f glauc, com v f  
aren grd to SDY  
**SLTST,** tr v f carb spks, dom  
frm-mod hd, amor-sbbiky

**SANDY SILTSTONE:** clr-trnsl,  
dom v f-f, wl srt, dom  
sbrnrd-rnrd, abdt slit mtx  
sft-frm agg, tr v f glauc, tr  
calc, p vis por, no hydc fluor

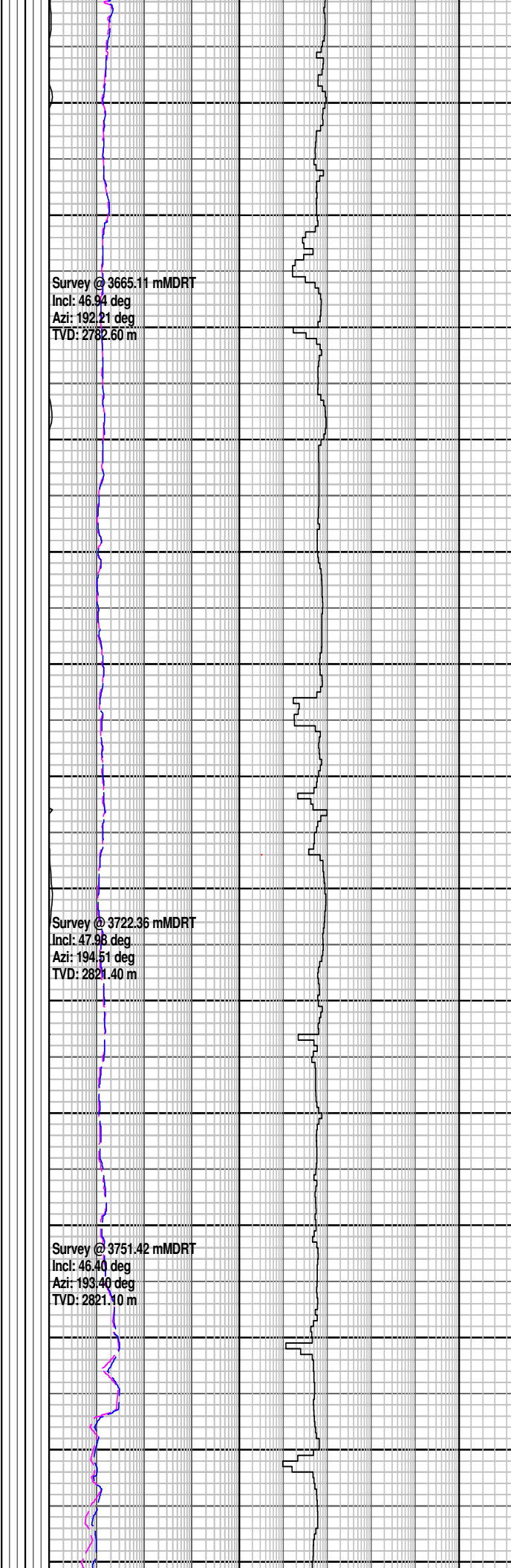
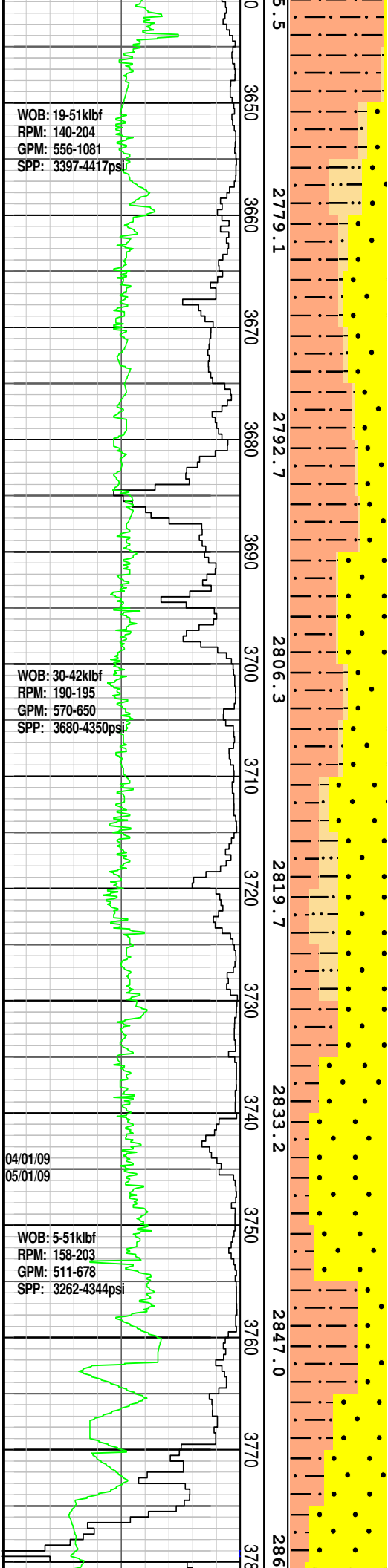
**SILTSTONE:** gy brn-dus brn,  
n calc, v aren grd to SANDY  
SILTSTONE, tr-com micmic,  
tr glauc, frm, dom  
sbfiss-sbbiky

**SANDSTONE:** clr-trnsl, lt olv  
gy-pl yel brn, v f-dom f, tr  
med-crs, mod srt, dom  
sbrnrd-rnrd, occ sft-frm agg  
wt slit mtx, tr v f glauc, tr pyr  
nod, dom lse,p-fr vis por, no  
hydc fluor

**SILTSTONE:** gy brn-dus brn,  
dk olv gy, n calc, v aren grd  
to SANDY SILTSTONE,  
tr-com micmic, tr glauc, frm,  
dom sbfiss-sbbiky

**SILTSTONE:** gy brn-dus brn,  
dk olv gy, n calc, v aren grd  
to SANDY SILTSTONE,  
tr-com micmic, tr glauc, frm,  
dom sbfiss-sbbiky

**SANDSTONE:**



SANDSTONE: clr-trnsl, lt olv gy-pl yelsh brn, v f-dom f, tr med & crs, mod srt, dom sbrnrd-rnnd, occ sft-frm agg w/ v disp argl mtrx, tr-com v f glauc grd i/p to GLUAC SST, tr pyr nod, dom lse, p-fr por vis, no hydc fluor

GLAUCONITIC SANDSTONE: clr-trnsl, lt gnsh gy, dom v f-f, wl srt, dom sbrnrd-rnnd, sft to frm agg w/v disp argl & glauc mtrx, com to abdt v f glauc & glauc pel, occ lse, p vis por, no hydc fluor

SILTSTONE: gysh brn-dsky olv gy, non calc, v aren, grd to SDY SLTST, tr disse pyr, tr pyr nod, tr-com micmic, tr-com glauc grd to GLAUC SLTST, frm, dom sbfiss-sbblky

SANDY SILTSTONE: off wh-v lt gy, lt gnsh gy, com v f aren grs grd i/p to SLTY SST, tr calc, tr v f glauc, tr micmic, sft-dom frm, sbfiss-sbblky

GLAUCONITIC SANDSTONE: clr-trnsl, lt gnsh gy, dom v f-f, wl srt, dom sbrnrd-rnnd, sft to frm agg w/ v disp lt gy-dk gnsh gy glauc argl mtrx, com-abdt v f-med glauc grs, occ lse, p vis por, no hydc fluor

SILTSTONE: olv gy-lt gy, gysh brn-dsky brn, non calc, v aren, grd to SDY SLTST, tr disse pyr, tr pyr nod, tr-com micmic, tr-com glauc grd to GLAUC SLTST, frm, dom sbfiss-sbblky

GLAUCONITIC SANDSTONE: clr-trnsl, lt gnsh gy, dom v f-f, tr crs grs, wl srt, dom sbrnrd-rnnd, sft to frm agg w/ v disp lt gy-dk gnsh gy glauc argl mtrx, com-abdt v f-med glauc grs, occ lse, p vis por, no hydc fluor

SILTSTONE: olv gy-dk olv gy, gysh brn-dsky brn, non calc, v aren, grd to SDY SLTST, tr pyr nod, tr-com micmic, f com glauc grd to GLAUC SLTST, frm, dom sbfiss-sbblky

SANDSTONE: clr-trnsl, tr frs,

