

# Dory-1

## Apache Energy Ltd

Realtime LWD Data - Field Copy

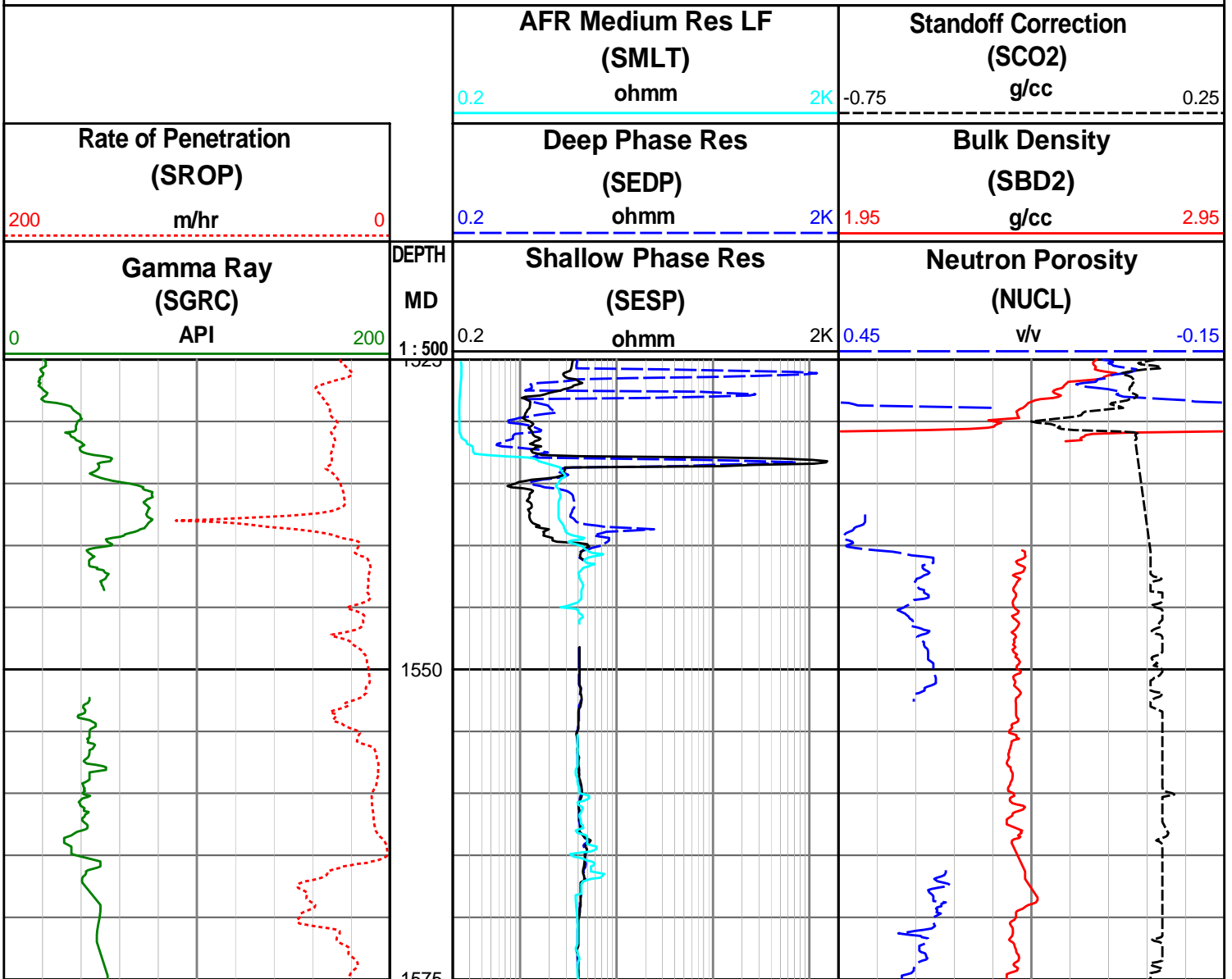
### 216mm Hole Section

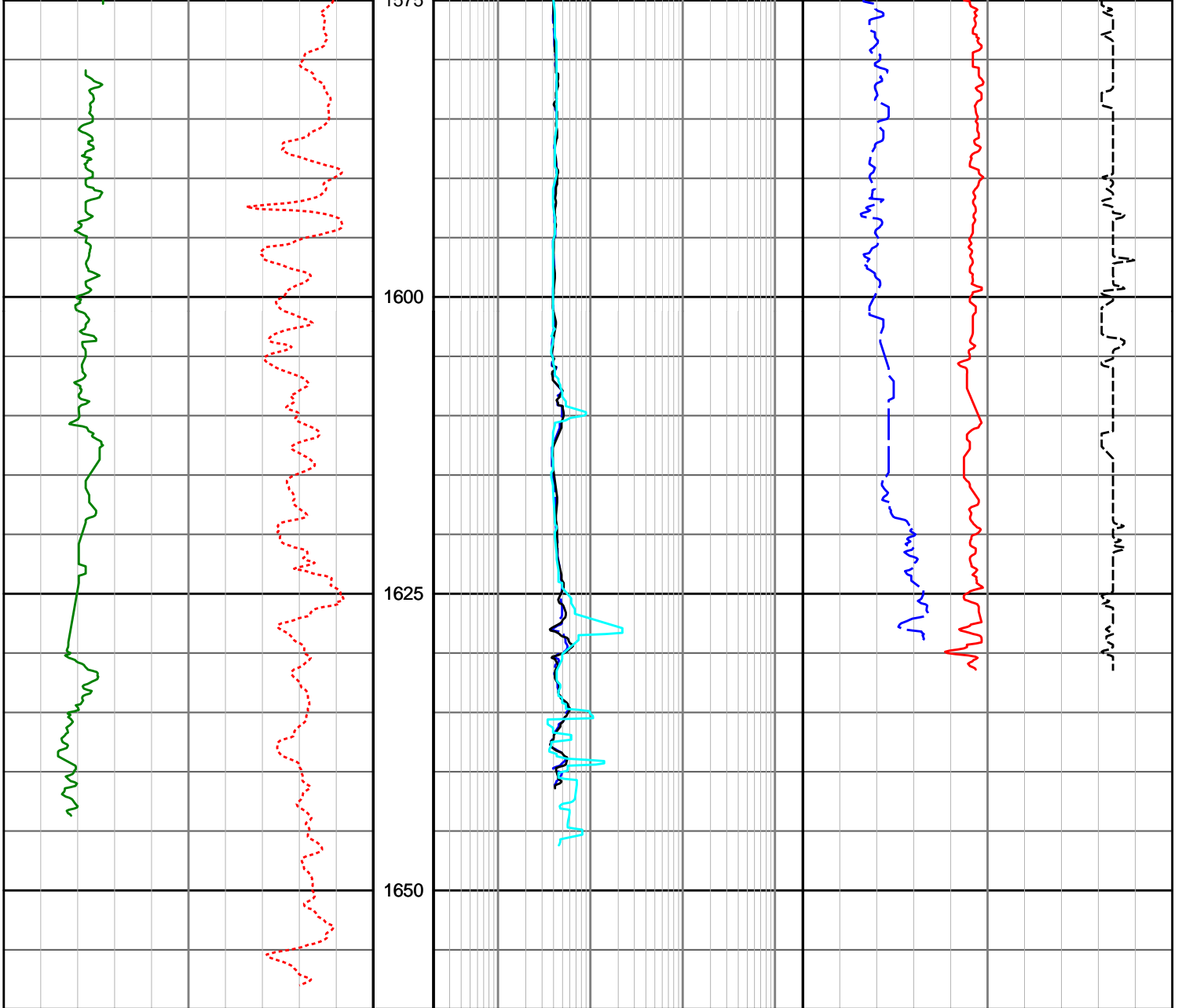
**Environmental Parameters:**

Hole Size = 216mm, Tool Size = 171mm  
 Mud Type = Water Based  
 MW = 1.15 sg  
 Formation Salinity = 25,000 ppm Cl  
 Mud Salinity = 60,00 ppm Cl  
 Matrix Density = 1.00 g/cc  
 Matrix Type = Limestone

**Remarks:**

1. Gamma Ray and Neutron Porosity have been environmentally corrected using the listed parameters where appropriate
2. Depth sensor changed from geograph to draw-works encoder at 1556 mMDRT.
3. Gaps in data due to poor detection





<p><b>Gamma Ray (SGRC)</b> API</p> <p>0 200</p>	<p>DEPTH MD 1 : 500</p>	<p><b>Shallow Phase Res (SESP)</b> ohmm</p> <p>0.2 2K</p>	<p><b>Neutron Porosity (NUCL)</b> v/v</p> <p>0.45 -0.15</p>
<p><b>Rate of Penetration (SROP)</b> m/hr</p> <p>200 0</p>		<p><b>Deep Phase Res (SEDP)</b> ohmm</p> <p>0.2 2K</p>	<p><b>Bulk Density (SBD2)</b> g/cc</p> <p>1.95 2.95</p>
		<p><b>AFR Medium Res LF (SMLT)</b> ohmm</p> <p>0.2 2K</p>	<p><b>Standoff Correction (SCO2)</b> g/cc</p> <p>-0.75 0.25</p>