

Dory-1

Apache Energy Ltd

Realtime LWD Data - Field Copy

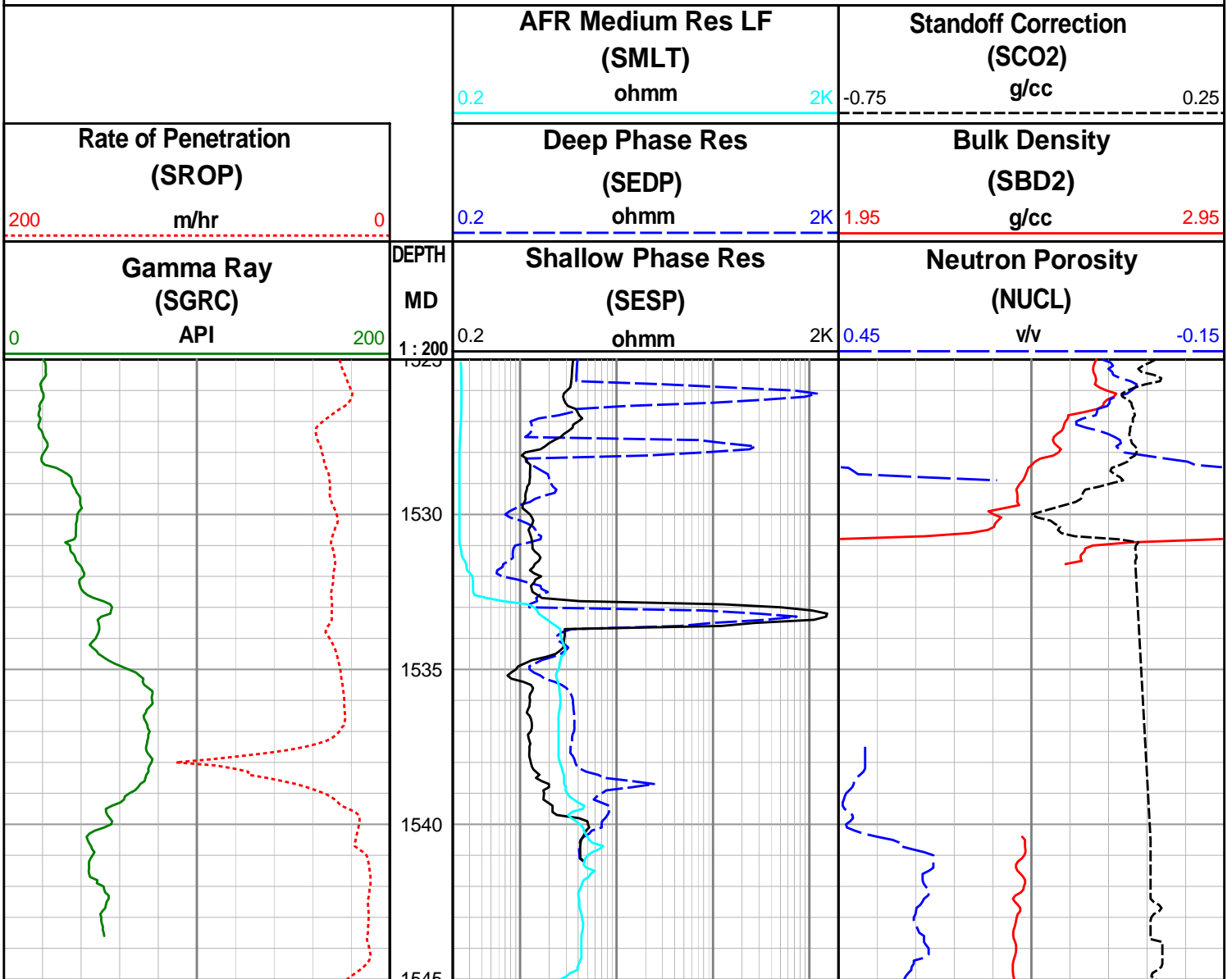
216mm Hole Section

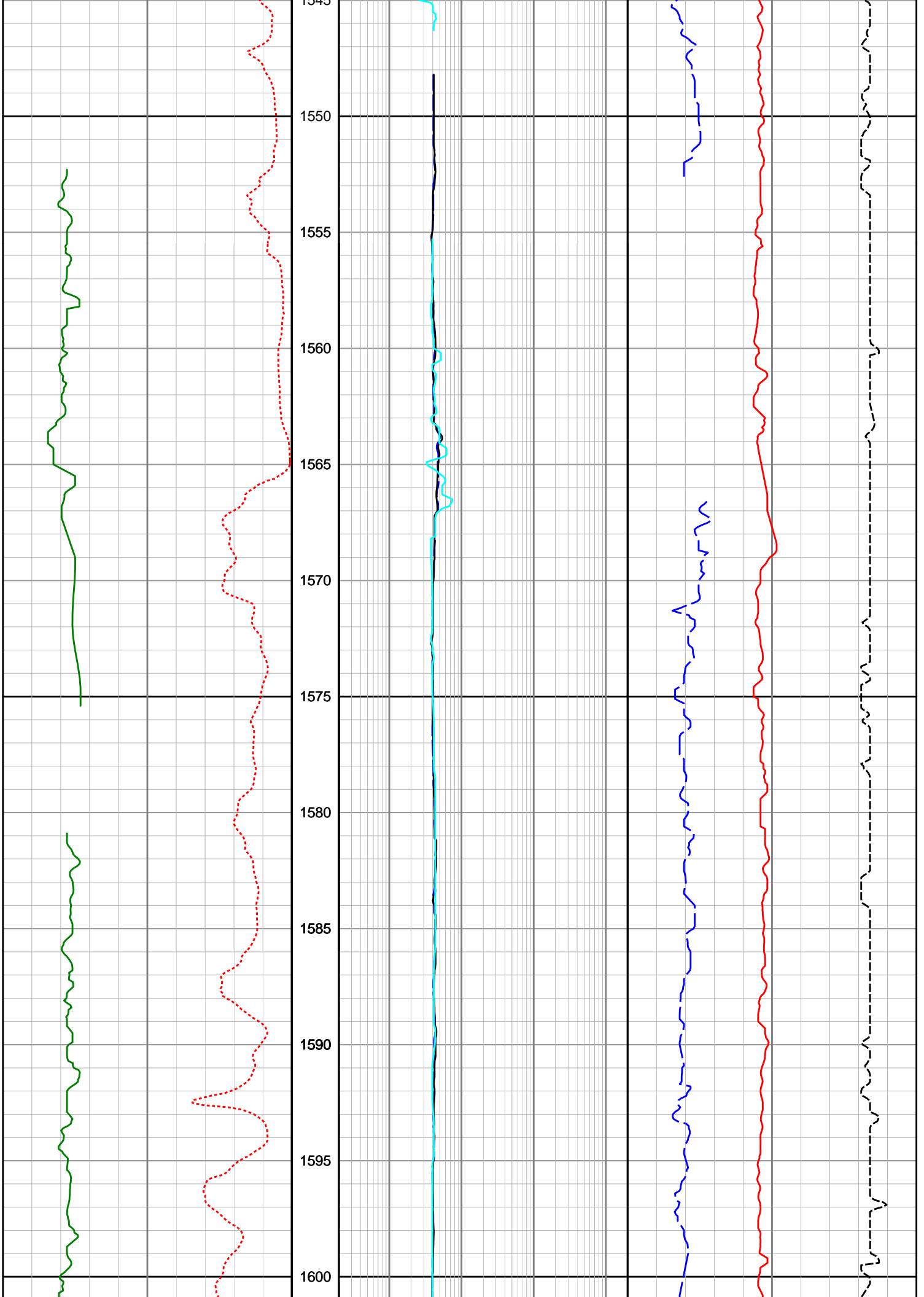
Environmental Parameters:

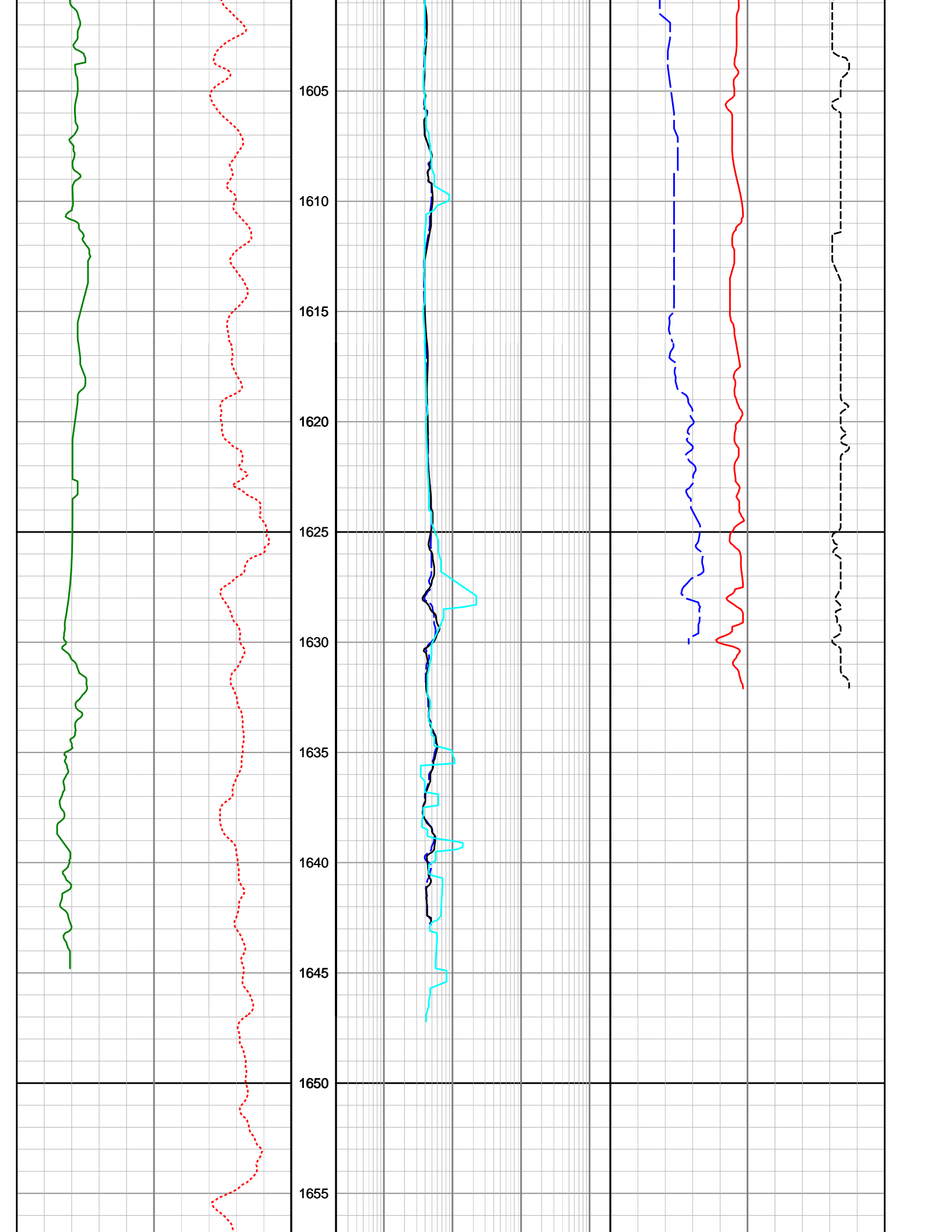
Hole Size = 216mm, Tool Size = 171mm
 Mud Type = Water Based
 MW = 1.15 sg
 Formation Salinity = 25,000 ppm Cl
 Mud Salinity = 60,00 ppm Cl
 Matrix Density = 1.00 g/cc
 Matrix Type = Limestone

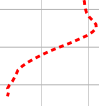
Remarks:

1. Gamma Ray and Neutron Porosity have been environmentally corrected using the listed parameters where appropriate
2. Depth sensor changed from geograph to draw-works encoder at 1556 mMDRT.
3. Gaps in data due to poor detection







	1660 DEPTH		
Gamma Ray (SGRC) API	MD 1 : 200	Shallow Phase Res (SESP) ohmm	Neutron Porosity (NUCL) v/v
Rate of Penetration (SROP) m/hr		Deep Phase Res (SEDP) ohmm	Bulk Density (SBD2) g/cc
		AFR Medium Res LF (SMLT) ohmm	Standoff Correction (SCO2) g/cc

0 200

0.2 2K

0.45 -0.15

200 0

0.2 2K

1.95 2.95

0.2 2K

-0.75 0.25