

Dory-1

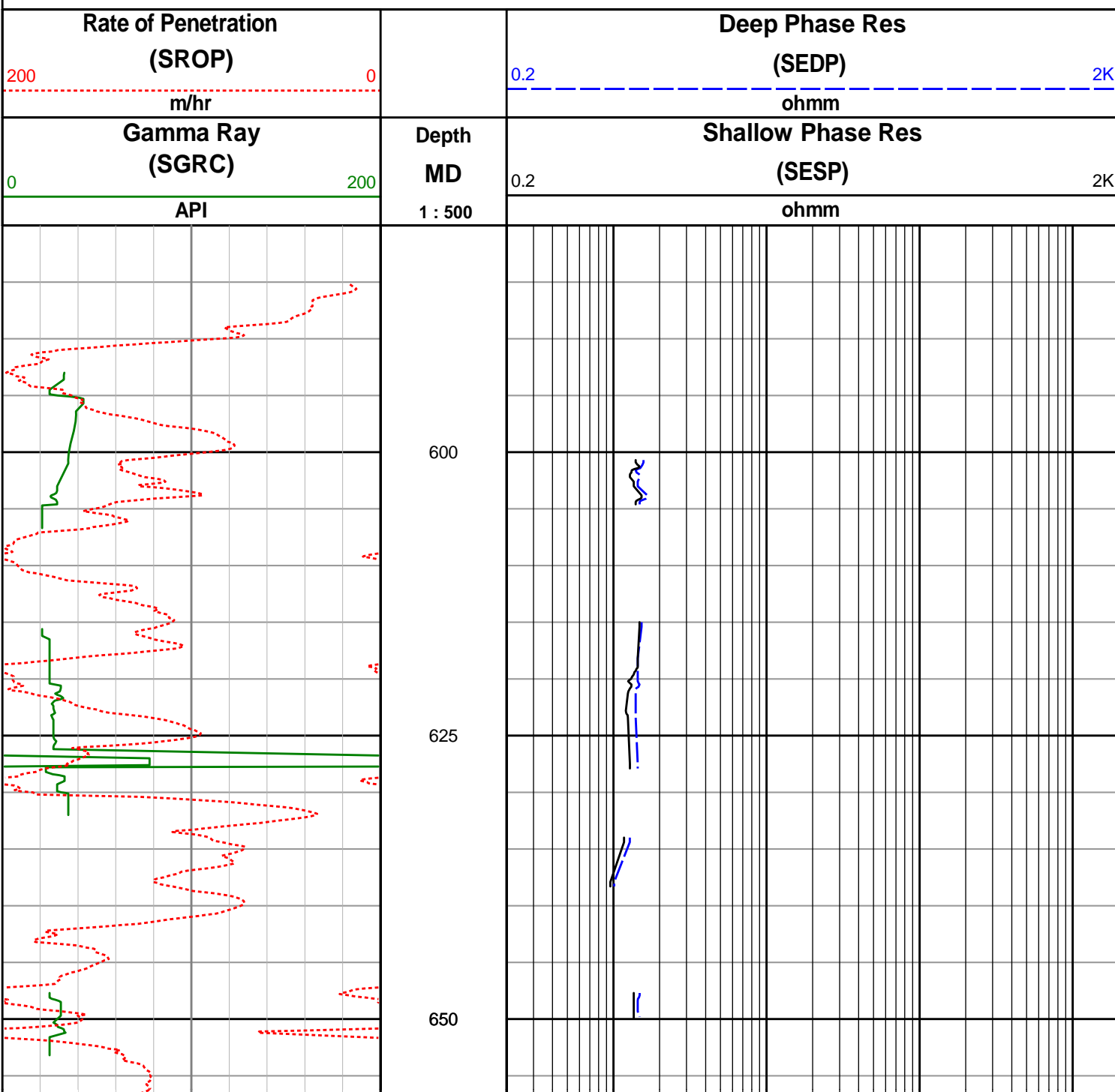
Apache Energy Ltd

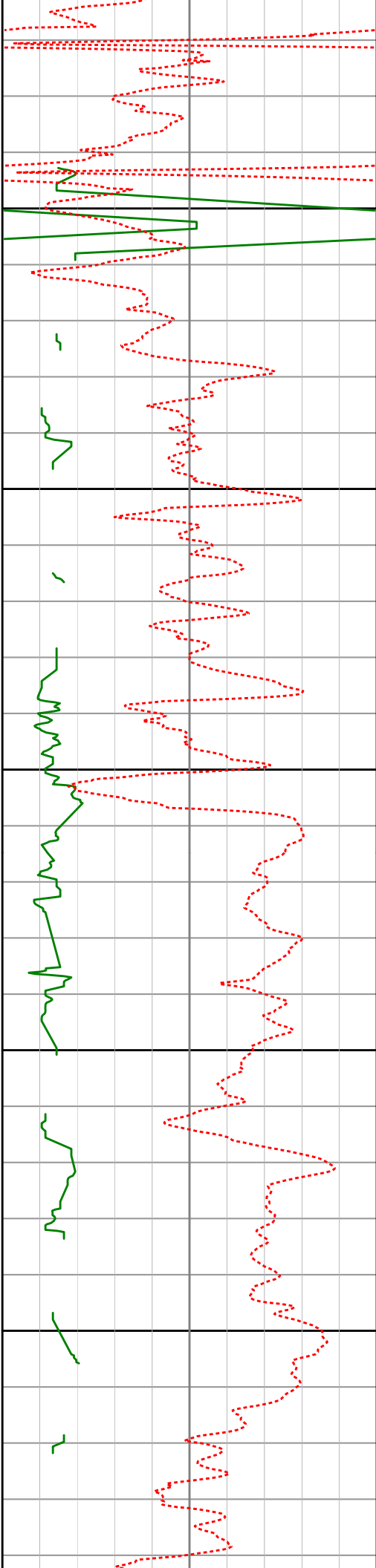
Realtime LWD Data - Field Data

406mm Hole Section

Remarks:

1. Gap in Gamma from 653.4 to 714.1 mMDRT due to pump 3 offline.
2. Gap in Resistivity from 650.0 to 712.9 mMDRT due to pump 3 offline.
3. Gap in Gamma from 766.9 to 811.8 mMDRT due to pump stroke counter.
4. Gap in Resistivity from 764.5 to 809.3 mMDRT due to pump 3 stroke counter.
5. Gap in Gamma from 815.2 mMDRT due to drilling parameters.
6. Gap in Resistivity from 812.3 mMDRT due to drilling parameters.





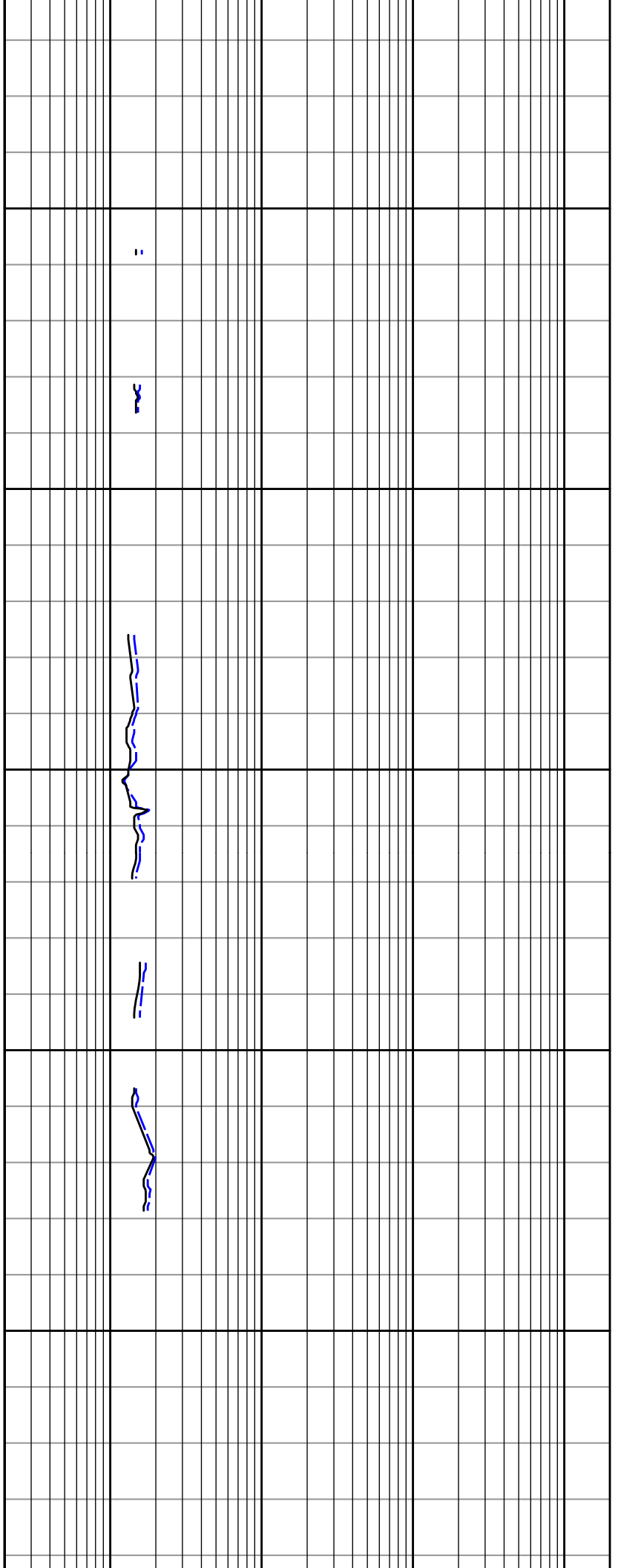
675

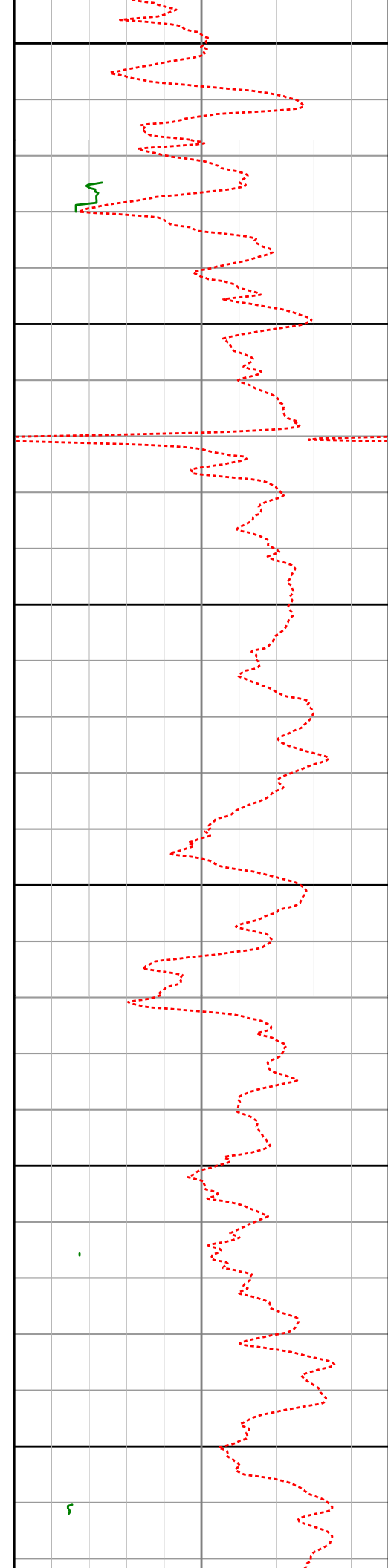
700

725

750

775





800

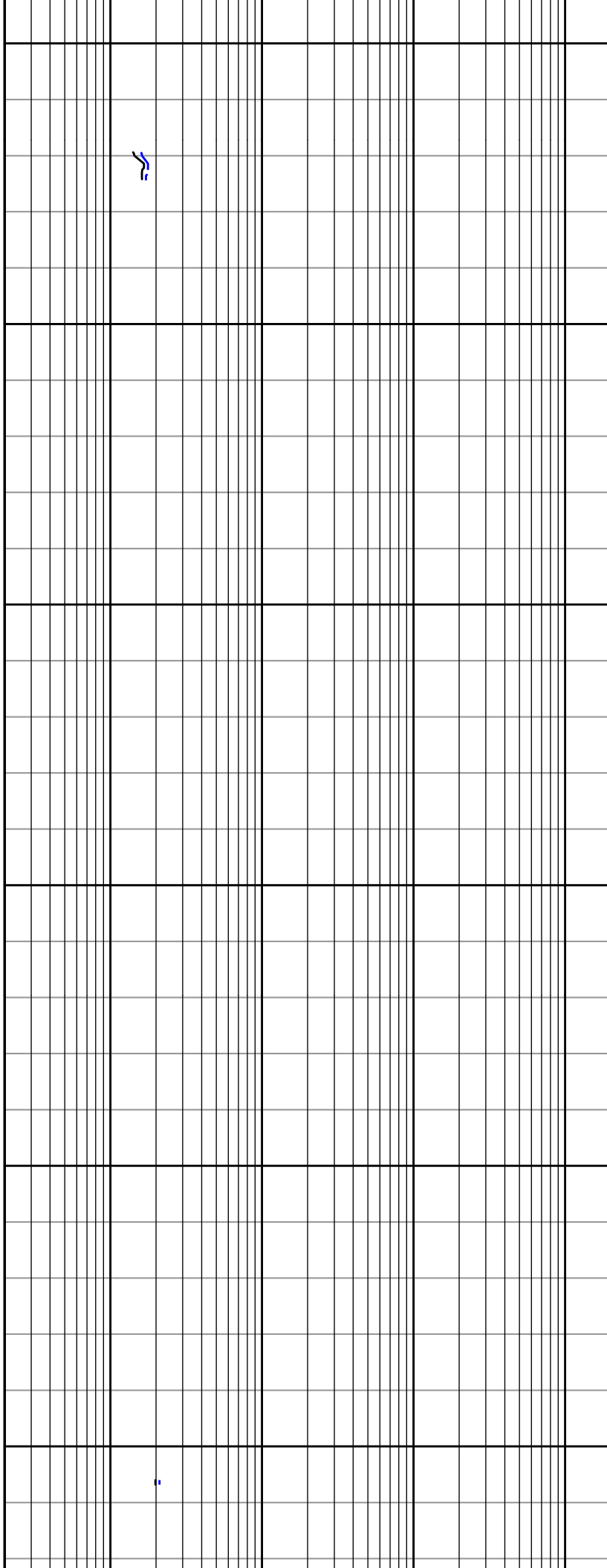
825

850

875

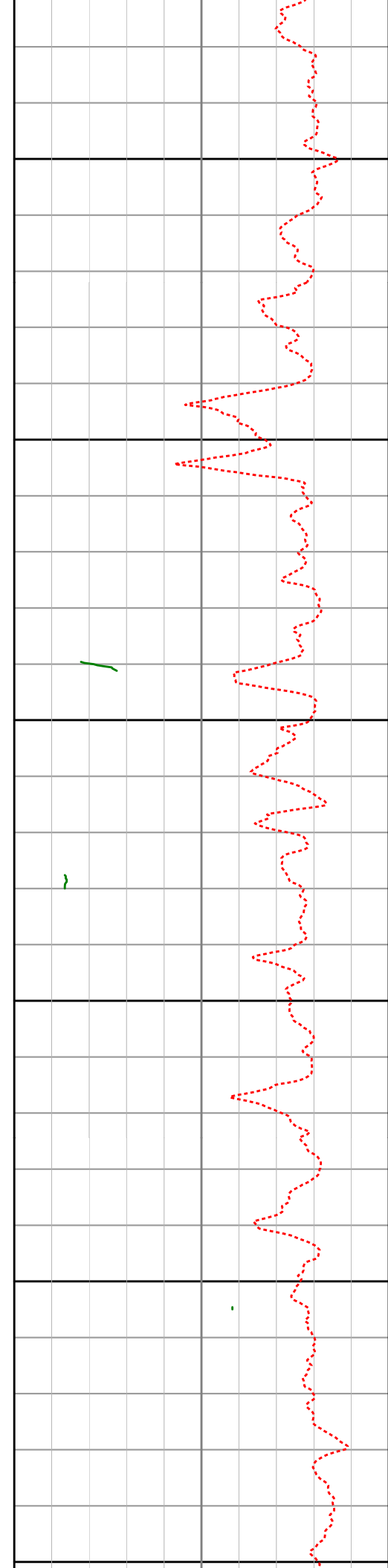
900

925



5

5



950

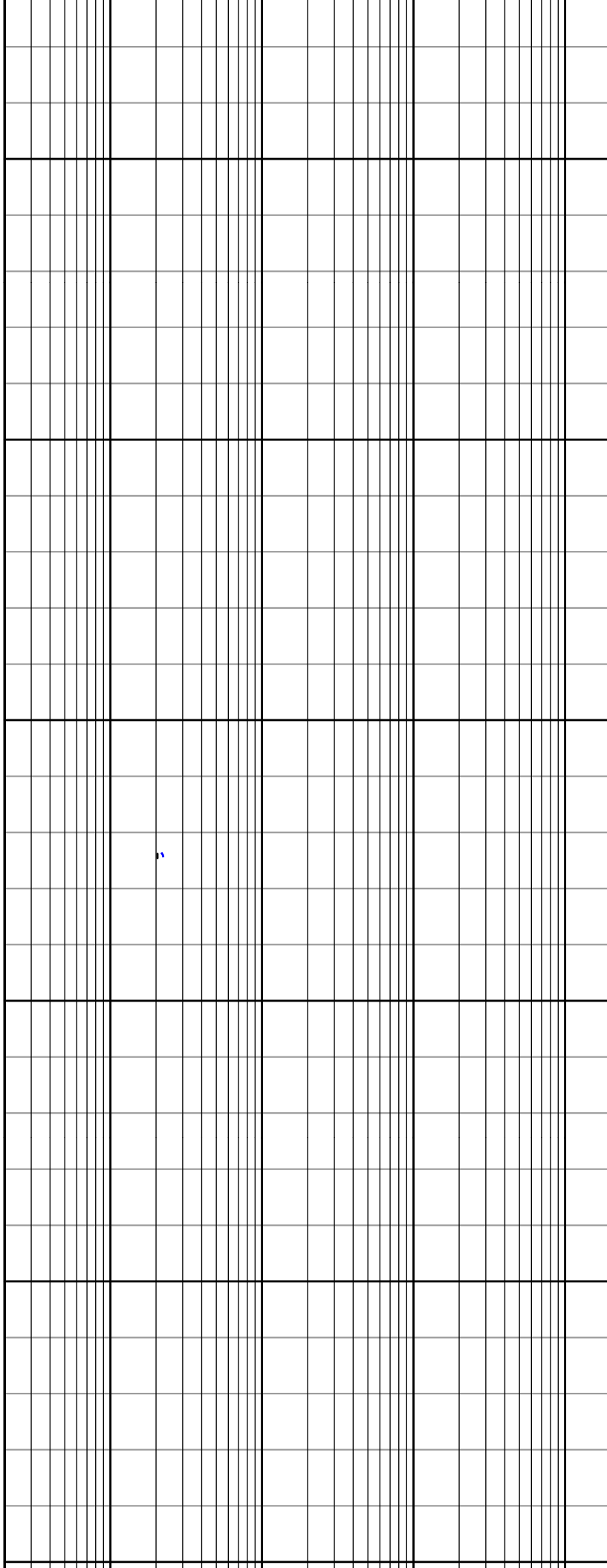
975

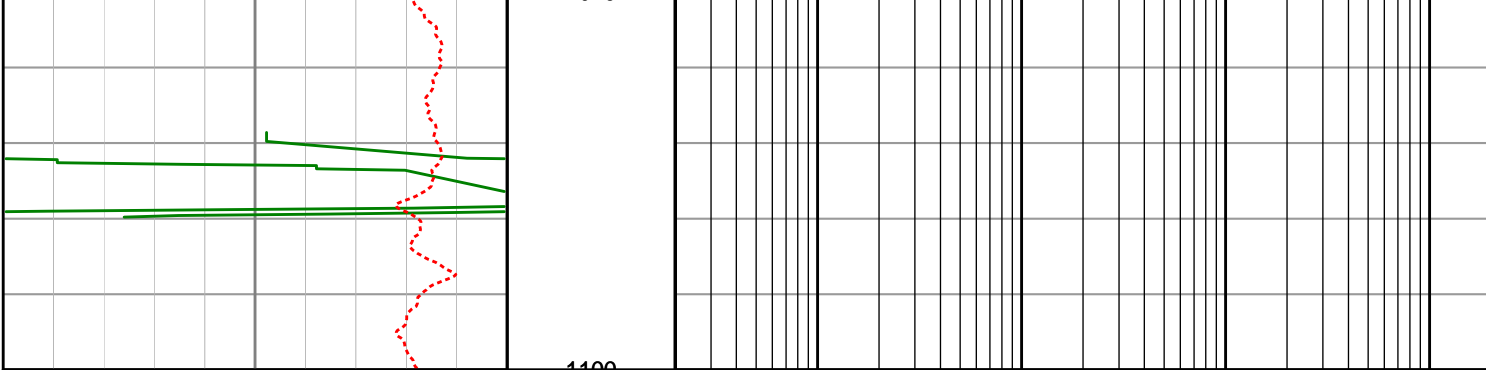
1000

1025

1050

1075





<p style="text-align: center;">Gamma Ray (SGRC)</p> <p style="text-align: center;">API</p>	<p style="text-align: center;">Depth MD</p> <p style="text-align: center;">1 : 500</p>	<p style="text-align: center;">Shallow Phase Res (SESP)</p> <p style="text-align: center;">ohmm</p>
<p style="text-align: center;">Rate of Penetration (SROP)</p> <p style="text-align: center;">m/hr</p>		<p style="text-align: center;">Deep Phase Res (SEDP)</p> <p style="text-align: center;">ohmm</p>

0 200

0.2 2K

200 0

0.2 2K