



Company : Apache

Well : Dory-1

Interval : 529.00 - 1556.17 meters

Created : 08/Nov/2008 8:39:02 AM



INTEQ

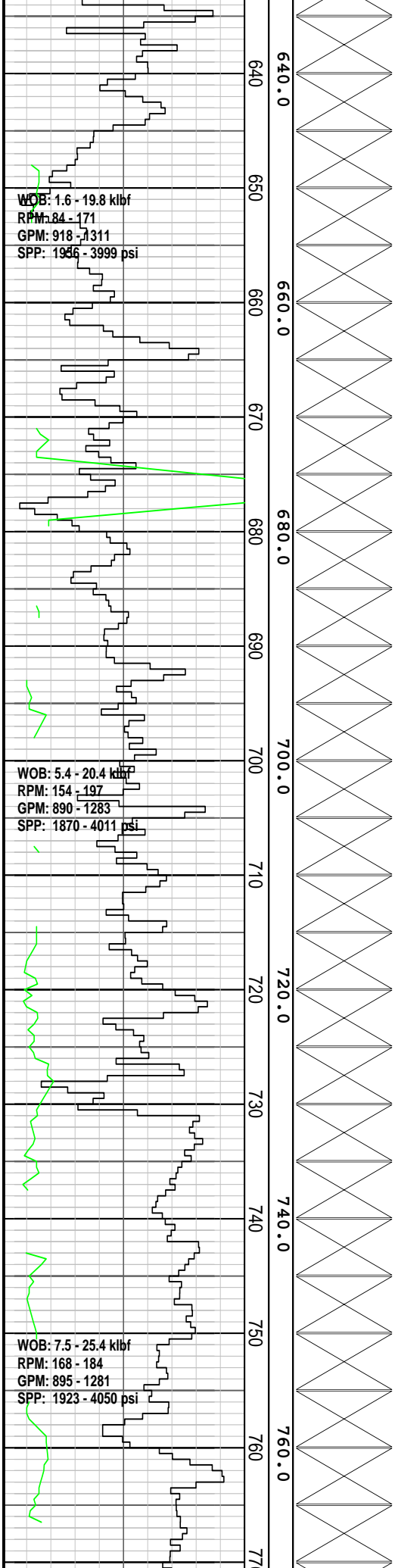
FORMATION EVALUATION LOG

| Drilling Rate | | MD meters | TVDRT meters | Cuttings Lithology | Visual Inferred Porosity | Oil Show | Gas Data | | Chromatograph Data | Calcmetry | Interpreted Lithology | Lithology Description |
|---------------|------------|-----------|--------------|--------------------|--------------------------|----------|-------------------|------------------|--------------------|-----------|-----------------------|-----------------------|
| ROP (m/hr) | ROP (m/hr) | | | | | | Resistivity Shall | Resistivity Deep | | | | |
| 200 | 200 | 1:500 | | | | 0.1 | 1000 | | CaCO3 % | | | |
| 180 | 240 | | | | | 0.1 | 1000 | | MgCO3 % | | | |
| 160 | 280 | | | | | | | | | | | |
| 140 | 320 | | | | | | | | | | | |
| 120 | 360 | | | | | | | | | | | |
| 100 | 400 | | | | | | | | | | | |
| 80 | 200 | | | | | | | | | | | |
| 60 | 240 | | | | | | | | | | | |
| 40 | 280 | | | | | | | | | | | |
| 20 | 320 | | | | | | | | | | | |
| Gamma Ray | | | | | | | | | | | | |
| API | | | | | | | | | | | | |

| | | | | | | | | | | | | |
|--|--|-----|-------|--|--|--|--|--|--|--|--|---|
| <p>NB1 Smith- XR+C 914 mm (36") 4x18, 4x18 Depth In: 538.0m Depth Out: 586.5m Drilled: 48.5m in 1.34hrs Grade: 1-1-WT-A-E-I-TD</p> | | 530 | 540.0 | | | | | | | | | <p>Dory-1 spudded @ 03:30hrs on 5th November 2008</p> <p>All depth measurements in meters referenced from Rotary table (RT) RT- AHD= 21.5 m Water depth = 517.25 mMDRT RT - Seabed = 538.75 mMDRT</p> <p>Drill 914mm hole w/ seawater and hi-vis sweeps. Returns to Seabed.</p> |
| <p>WOB: 1.63 - 13.12 klbf RPM: 16 - 113 GPM: 472 - 1207 SPP: 845 - 3550 psi</p> | | 550 | 560.0 | | | | | | | | | |
| <p>06/11/08 NB2 Smith TCT+CR 406 mm (16") 4x22, 1x18 Depth In: 586.5m Depth Out: 1537.0m Drilled: 952.0m in 21.90hrs Grade: xxxxxxxxxxxxxx</p> | | 570 | 580.0 | | | | | | | | | <p>Set 30" conductor casing @ 585.0mMDRT</p> <p>Drill 914mm hole to 586.50 mMDRT</p> <p>Drill 406mm hole w/ seawater and hi-vis gel sweeps. Returns to Seabed.</p> |
| | | 590 | 600.0 | | | | | | | | | |
| | | 610 | 620.0 | | | | | | | | | |
| | | 630 | | | | | | | | | | |

Survey @ 538.75 mMDRT
Incl: 0.0 deg
Azi: 0.0 deg
TVD: 538.75m

Survey @ 613.93 mMDRT
Incl: 1.24 deg
Azi: 346.95 deg
TVD: 613.93m



Survey @ 641.31
 mMDRT
 Incl: 1.32 deg
 Azi: 347.27 deg
 TVD: 641.30m

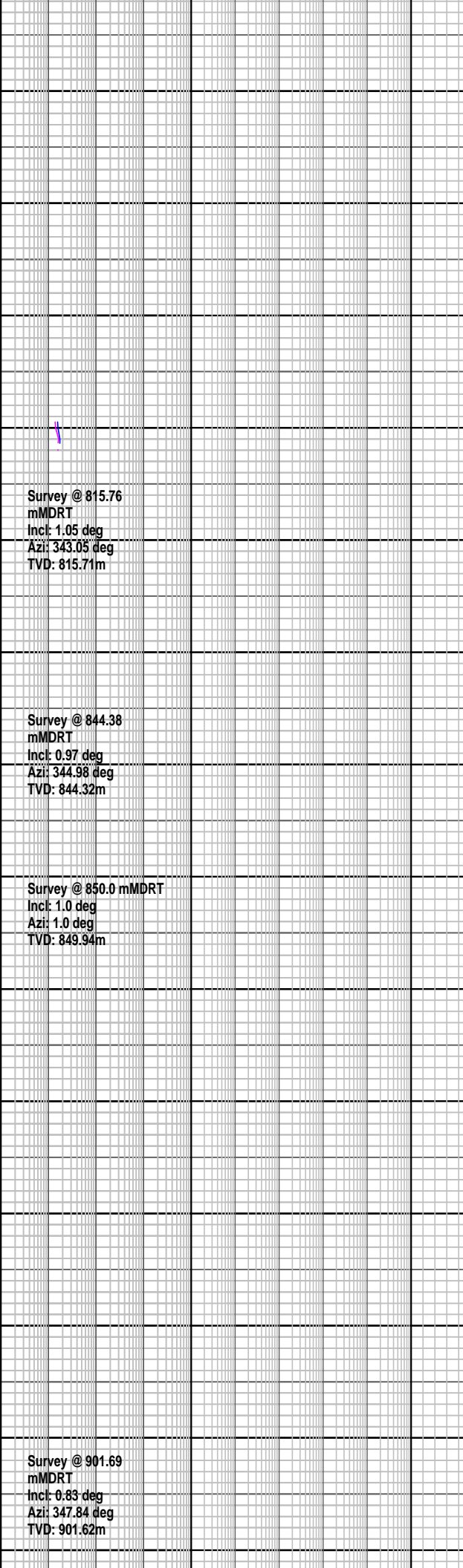
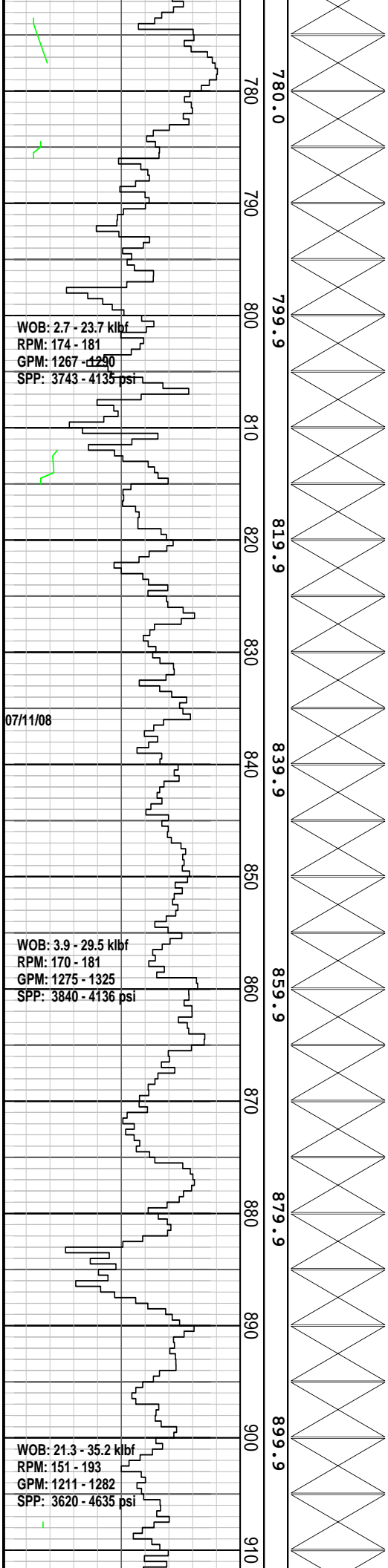
Survey @ 729.06
 mMDRT
 Incl: 1.27 deg
 Azi: 349.67 deg
 TVD: 729.05m

Survey @ 758.04
 mMDRT
 Incl: 1.3 deg
 Azi: 347.73 deg
 TVD: 758.0m

Drill 406mm hole w/seawater and hi-vis gel sweeps. Returns to Seabed.

Drill 406mm hole w/seawater and hi-vis gel sweeps. Returns to Seabed.

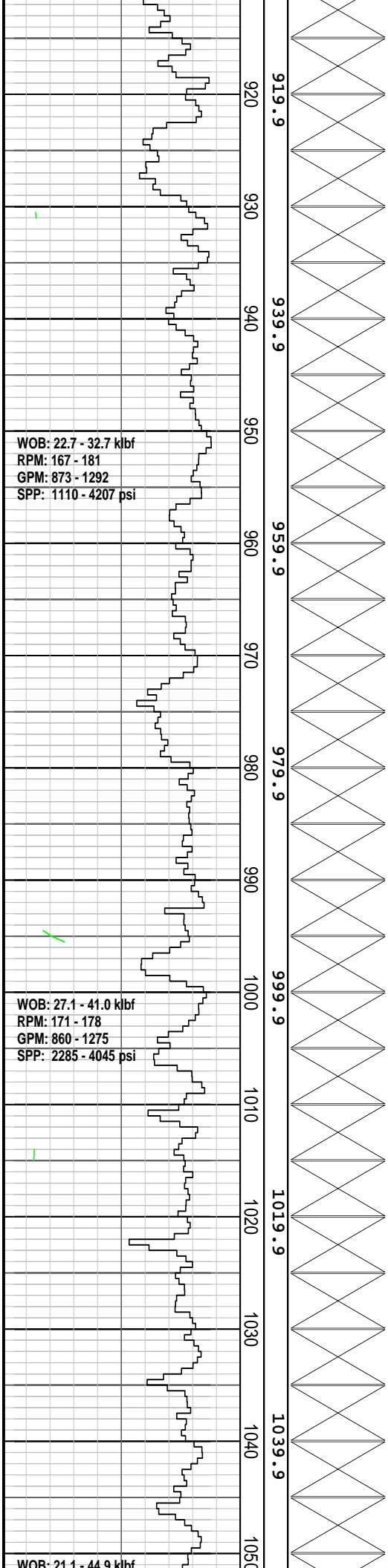
Drill 406mm hole w/seawater and hi-vis gel sweeps. Returns to Seabed.



Drill 406mm hole w/ seawater and hi-vis gel sweeps. Returns to Seabed.

Drill 406mm hole w/ seawater and hi-vis gel sweeps. Returns to Seabed.

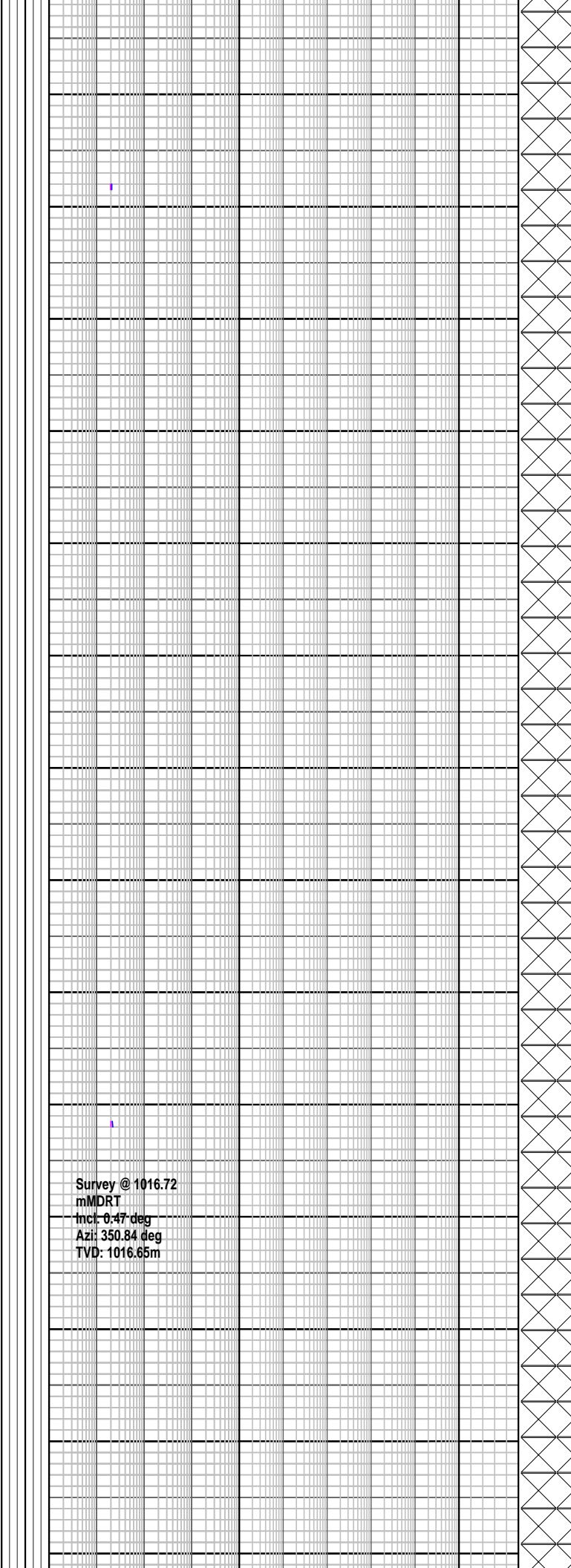
Drill 406mm hole w/ seawater and hi-vis gel sweeps. Returns to Seabed.



WOB: 22.7 - 32.7 kbf
RPM: 167 - 181
GPM: 873 - 1292
SPP: 1110 - 4207 psi

WOB: 27.1 - 41.0 kbf
RPM: 171 - 178
GPM: 860 - 1275
SPP: 2285 - 4045 psi

WOB: 21.1 - 44.9 kbf



Survey @ 1016.72
mMDRT
Incl: 0.47 deg
Azi: 350.84 deg
TVD: 1016.65m

Drill 406mm hole w/ seawater and hi-vis gel sweeps. Returns to Seabed.

Drill 406mm hole w/ seawater and hi-vis gel sweeps. Returns to Seabed.

Drill 406mm hole w/ seawater and

WOB: 21.7 - 49.5 kbf
RPM: 174 - 180
GPM: 1200 - 1290
SPP: 2227 - 4220 psi

WOB: 31.7 - 56.2 kbf
RPM: 122 - 189
GPM: 1060 - 1275
SPP: 3008 - 4155 psi

WOB: 22.0 - 57.2 kbf
RPM: 98 - 165
GPM: 916 - 1278
SPP: 2200 - 4220 psi

1059.9
1060
1070
1080
1090
1099.9
1100
1110
1119.9
1120
1130
1139.9
1140
1150
1159.9
1160
1170
1179.9
1180
1190

Survey @ 1074.58
mMDRT
Incl: 0.45 deg
Azi: 1.50 deg
TVD: 1074.51m

Survey @ 1132.15
mMDRT
Incl: 0.26 deg
Azi: 336.38 deg
TVD: 1132.07m

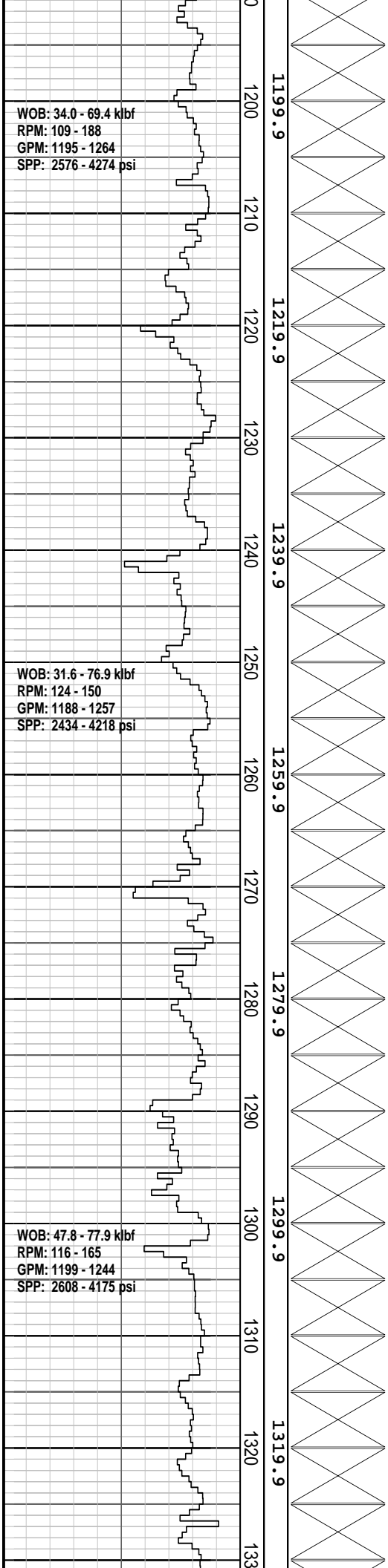
Survey @ 1160.99
mMDRT
Incl: 0.25 deg
Azi: 342.45 deg
TVD: 1160.91m

Survey @ 1189.79

Drill 406mm hole w/ seawater and hi-vis gel sweeps. Returns to Seabed.

Drill 406mm hole w/ seawater and hi-vis gel sweeps. Returns to Seabed.

Drill 406mm hole w/ seawater and hi-vis gel sweeps. Returns to Seabed.



mMDRT
Incl: 0.28 deg
Azi: 339.34 deg
TVD: 1189.71m

Survey @ 1218.51
mMDRT
Incl: 0.36 deg
Azi: 337.60 deg
TVD: 1218.43m

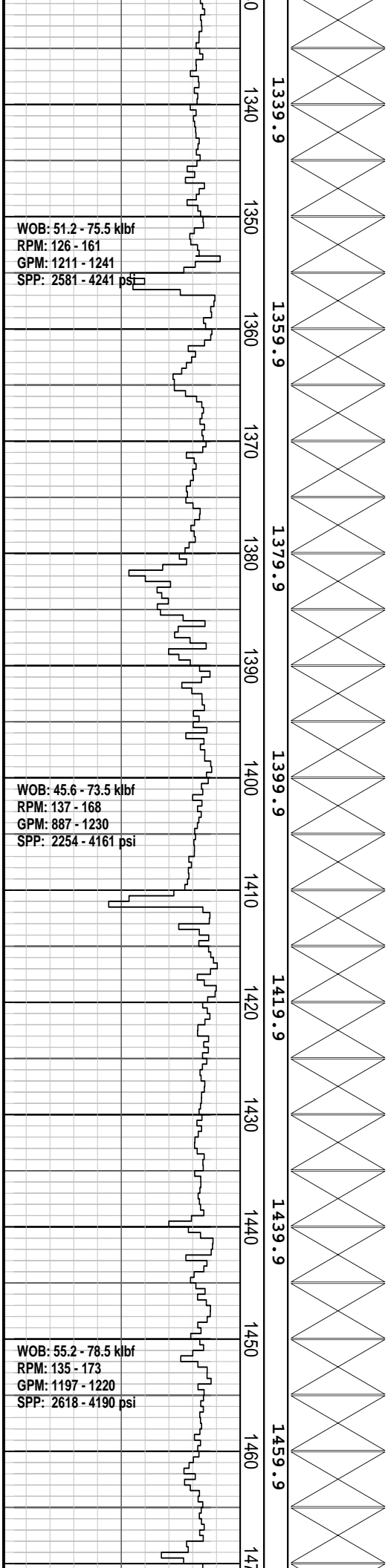
Survey @ 1247.27
mMDRT
Incl: 0.31 deg
Azi: 352.14deg
TVD: 1247.19m

Survey @ 1275.84
mMDRT
Incl: 0.35 deg
Azi: 336.74 deg
TVD: 1275.76m

Drill 406mm hole w/ seawater and hi-vis gel sweeps. Returns to Seabed.

Drill 406mm hole w/ seawater and hi-vis gel sweeps. Returns to Seabed.

Drill 406mm hole w/ seawater and hi-vis gel sweeps. Returns to Seabed.



Survey @ 1333.43
 mMDRT
 Incl: 0.45 deg
 Azi: 3337.84 deg
 TVD: 1333.35m

Survey @ 1362.39
 mMDRT
 Incl: 0.36 deg
 Azi: 331.14 deg
 TVD: 1362.31m

Survey @ 1391.37
 mMDRT
 Incl: 0.38 deg
 Azi: 337.89 deg
 TVD: 1391.29m

Drill 406mm hole w/ seawater and hi-vis gel sweeps. Returns to Seabed.

Drill 406mm hole w/ seawater and hi-vis gel sweeps. Returns to Seabed.

Drill 406mm hole w/ seawater and hi-vis gel sweeps. Returns to Seabed.

