



Company : Apache

Well : Dory-1

Interval : 534.00 - 1059.71 meters

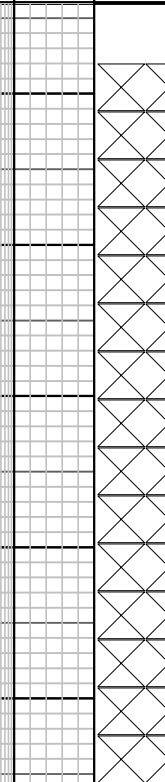
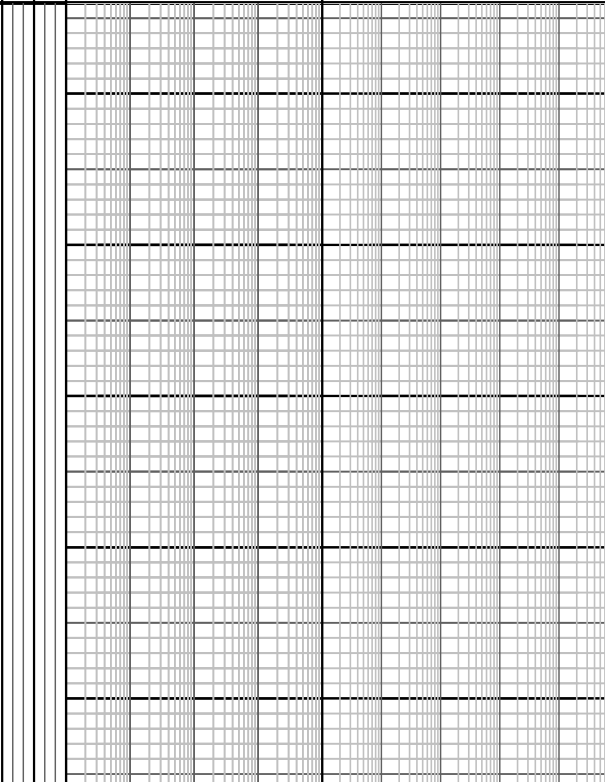
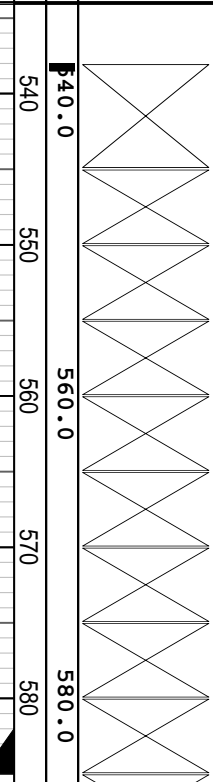
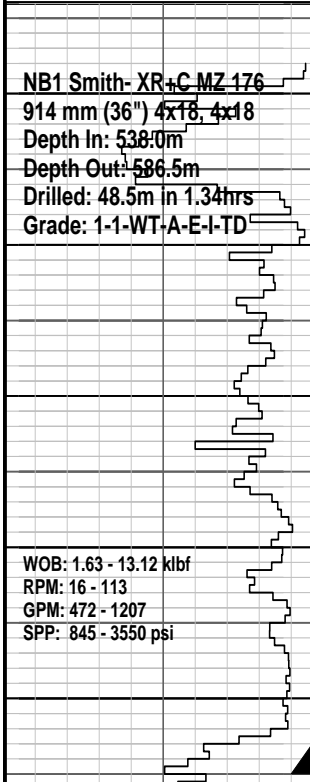
Created : 07/Nov/2008 8:00:27 AM



INTEQ

### FORMATION EVALUATION LOG

Drilling Rate		MD meters	TVDRT meters	Cuttings Lithology	Visual Inferred Porosity	Oil Show	Gas Data		Chromatograph Data	Calcmetry	Interpreted Lithology	Lithology Description
ROP (m/hr)	ROP (m/hr)						Resistivity Shall	Resistivity Deep				
200	200	540.0	540.0				0.1	1000				
180	240	550	550				0.1	1000				
160	280	560	560									
140	320	570	570									
120	360	580	580									
100	400	590	590									
80	200	600	600									
60	240	610	610									
40	280	620	620									
20	320	630	630									
Gamma Ray												
API												



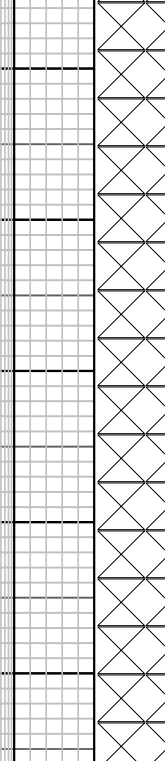
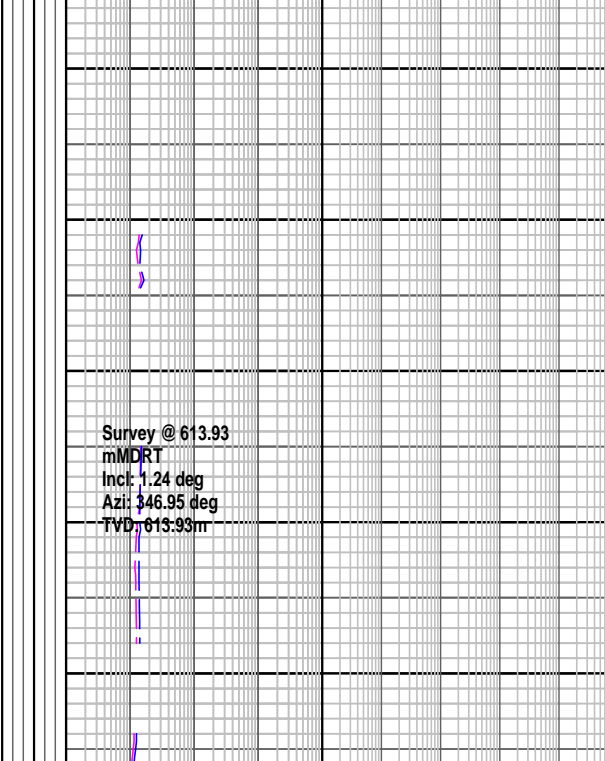
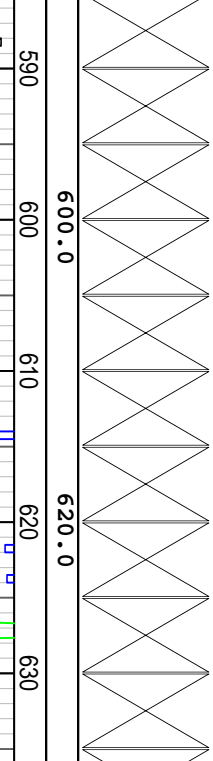
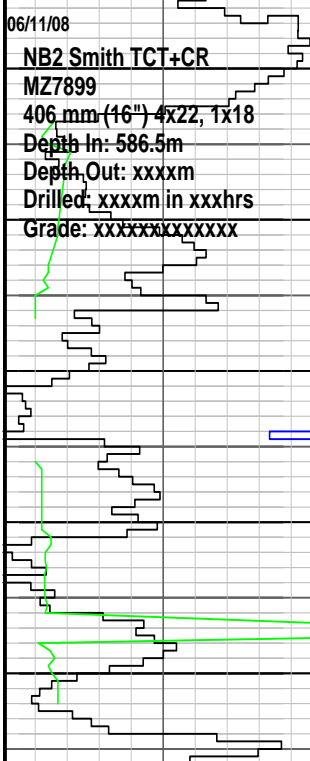
Dory-1 spudded @ 03:30hrs on 5th November 2008

All depth measurements in meters referenced from Rotary table (RT)  
 RT- AHD= 21.5 m  
 Water depth = 517.25 mMDRT  
 RT - Seabed = 538.75 mMDRT

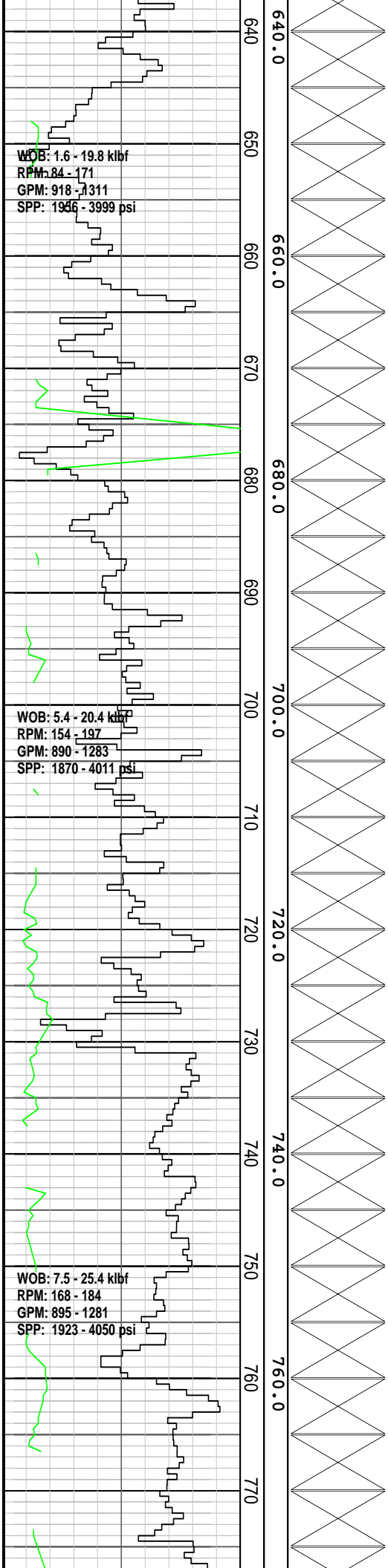
Drill 914mm hole w/ seawater and hi-vis sweeps. Returns to Seabed.

Set 30" conductor casing @ 585.0mMDRT

Drill 914mm hole to 586.50 mMDRT



Drill 406mm hole w/ seawater and hi-vis gel sweeps. Returns to Seabed.



Survey @ 641.31  
 mMDRT  
 Incl: 1.32 deg  
 Azi: 347.27 deg  
 TVD: 641.30m

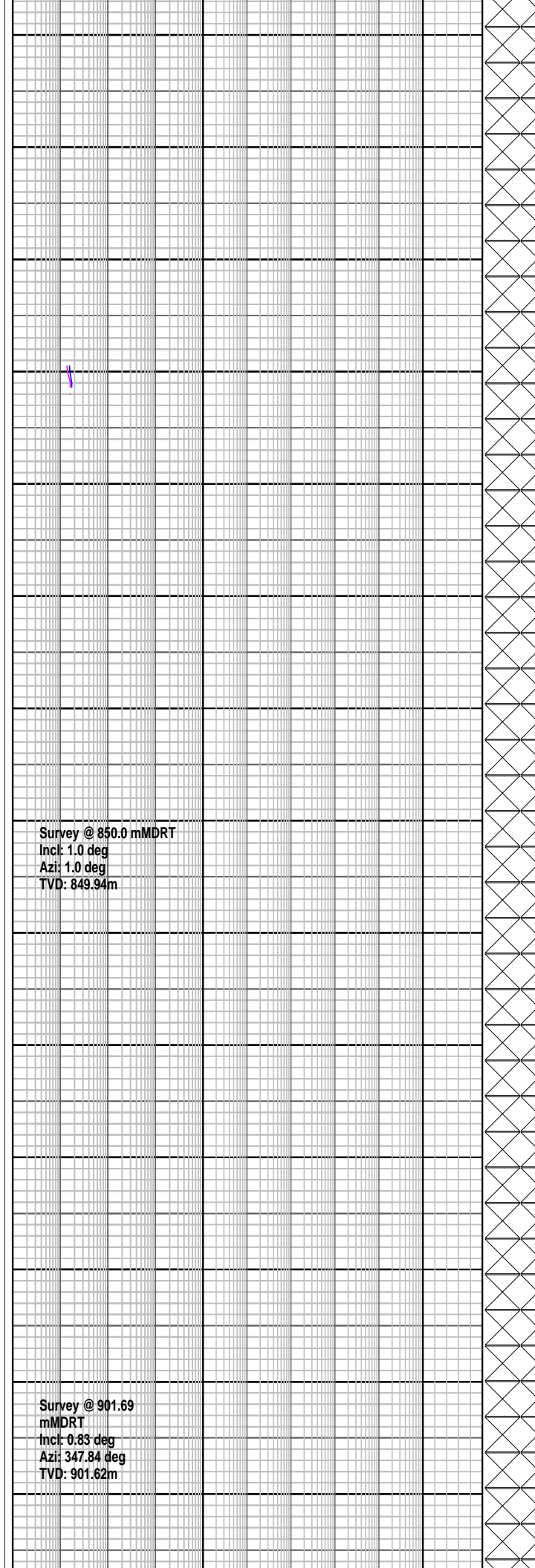
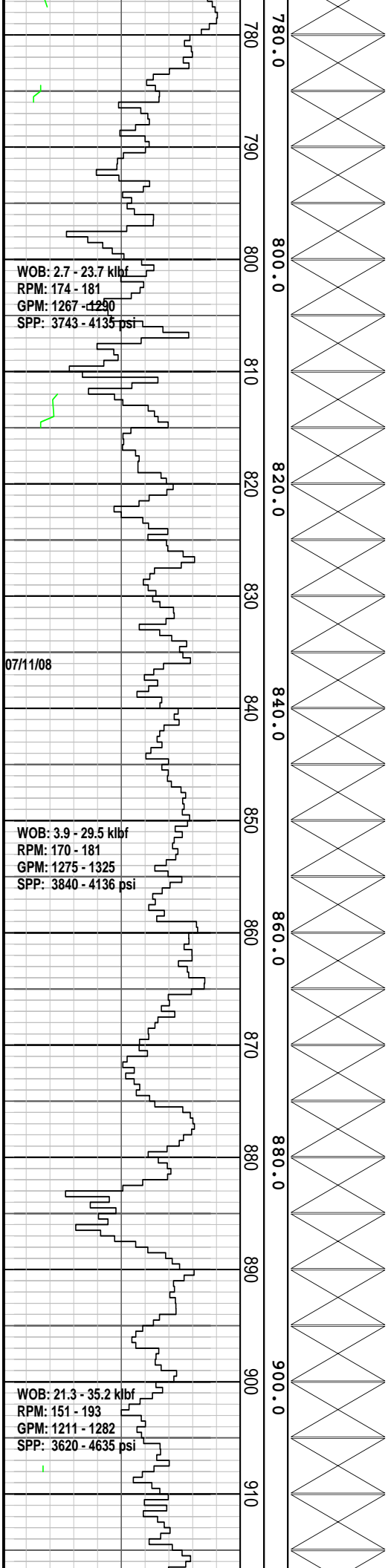
Survey @ 729.06  
 mMDRT  
 Incl: 1.27 deg  
 Azi: 349.67 deg  
 TVD: 729.05m

Survey @ 758.04  
 mMDRT  
 Incl: 1.3 deg  
 Azi: 347.73 deg  
 TVD: 758.0m

Drill 406mm hole w/seawater and hi-vis gel sweeps. Returns to Seabed.

Drill 406mm hole w/seawater and hi-vis gel sweeps. Returns to Seabed.

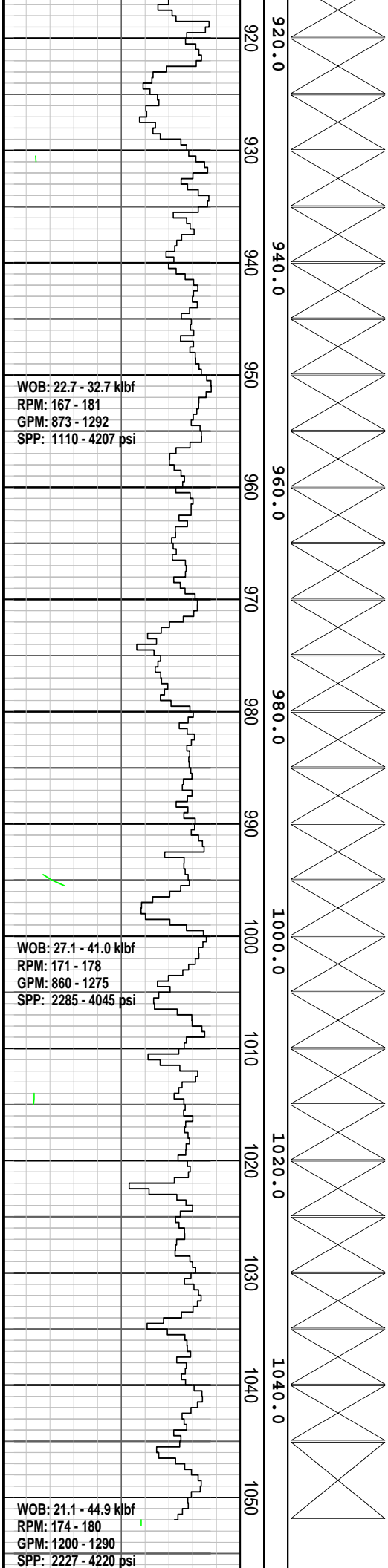
Drill 406mm hole w/seawater and hi-vis gel sweeps. Returns to Seabed.



Drill 406mm hole w/ seawater and hi-vis gel sweeps. Returns to Seabed.

Drill 406mm hole w/ seawater and hi-vis gel sweeps. Returns to Seabed.

Drill 406mm hole w/ seawater and hi-vis gel sweeps. Returns to Seabed.



Drill 406mm hole w/ seawater and hi-vis gel sweeps. Returns to Seabed.

Drill 406mm hole w/ seawater and hi-vis gel sweeps. Returns to Seabed.

Drill 406mm hole w/ seawater and hi-vis gel sweeps. Returns to Seabed.

