

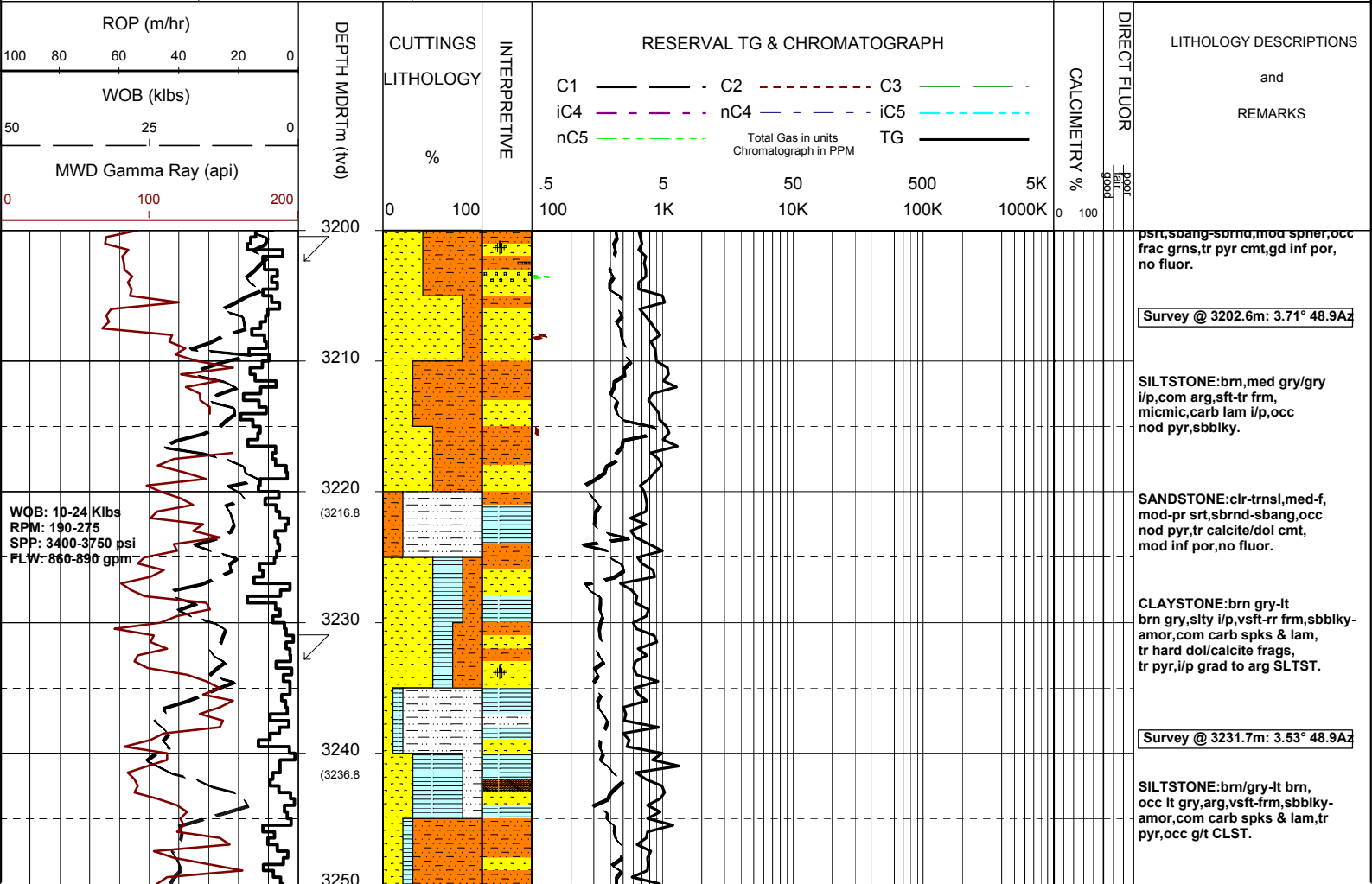


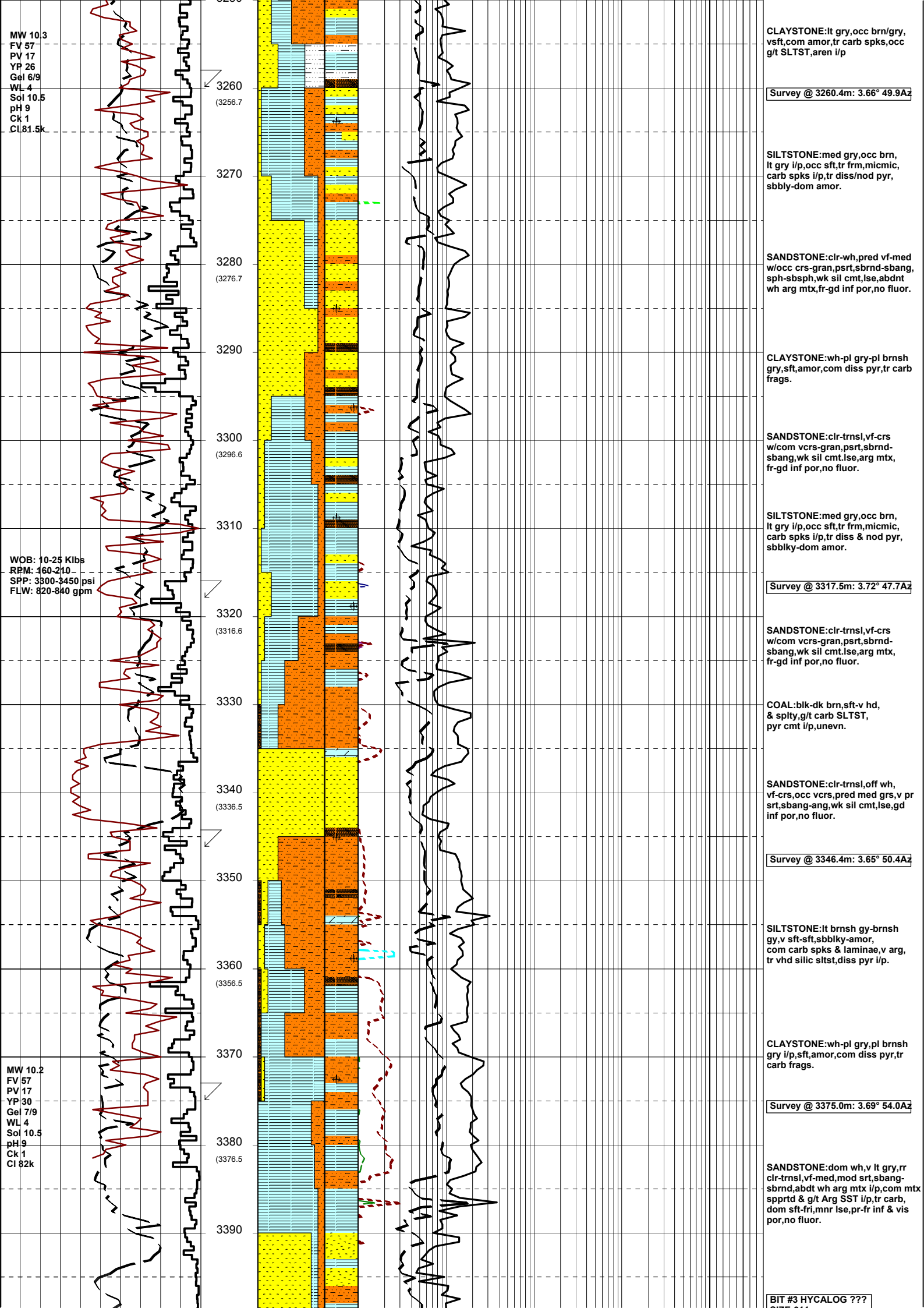
MASTERLOG CULVERIN-1



GENERAL	POSITION	HOLE / CASING INFO	DATE / DEPTH	ENGINEERS
Country : AUSTRALIA	Latitude : 38°24'08.14"S	914mm (36") hole to mMDRT: 650.0m	Spud Date : 16-12-05	D.ADDERLEY
Permit : VIC/P-56	Longitude : 148°39'14.92"E	445mm (17 1/2") hole to mMDRT: 1525m	Total Depth Date : xx-xx-05	T.PLATT
Field : GIPPSLAND	UTM Co-ord X (m E):644 440	311mm (12 1/4") hole to mMDRT: m	Total Depth (mMDRT): m	A.DUNN
Basin : GIPPSLAND	UTM Co-ord Y (m N):5 748 250	762mm (30") Cond. to mMDRT: 650m	True Vertical Depth (mTVDSS): m	S.PROSSER
Well Type : EXPLORATION	RT to MSL (m): 22	340mm (13 3/8") Csg to mMDRT: 1511m	Log Scale : 1/ 500	
Rig Name : OCEAN PATRIOT	RT to Sea Bed (m): 607		Final Status :	

ABBREVIATIONS		LITHOLOGY LEGEND				ENGINEERING LEGEND	
MW Mud Weight	WOB Weight on Bit (klbs)	Claystone	Marl	Lithic Fragment	Cement	Shoe	
FV Funnel Viscosity	RPM Rotations Per Min	Siltstone	Clay, Limestone	Foraminifera	Glauconite	Deviation survey ← RFT	
PV Plastic Viscosity	FLW Flow Rate (gpm)	Shale	Limestone	Fossils	Pyrite	DST ← FIT	
YP Yield Point	SPP Pump Pressure (psi)	Fine SST	Dolomite	Bryozoa	Iron Minerals	TEST → Mud loss	
Gel Gel Strength	RR Re-Run Bit	Medium SST	Coal	Sponges	Mica	Sidewall Core → Mud gain	
WL Water Loss	TG Trip Gas	Coarse SST	Arg. Siltstone	Brachiopoda	Carb Fragments	Core	
KCI Potassium Chloride	CG Connection Gas						
Cl Chlorides	BG Background Gas						
Incl Inclination	DGP Drilled Gas Peak						
Az Azimuth	MM Mud Motor						





MW 10.3
 FV 57
 PV 17
 YP 26
 Gel 6/9
 WL 4
 Sol 10.5
 pH 9
 Ck 1
 CI 81.5k

WOB: 10-25 Klbs
 RPM: 460-210
 SPP: 3300-3450 psi
 FLW: 820-840 gpm

MW 10.2
 FV 57
 PV 17
 YP 38
 Gel 7/9
 WL 4
 Sol 10.5
 pH 9
 Ck 1
 CI 82k

CLAYSTONE:lt gry,occ brn/gry,
 vsft,com amor,tr carb spks,occ
 g/t SLTST,aren i/p

Survey @ 3260.4m: 3.66° 49.9Az

SILTSTONE:med gry,occ brn,
 lt gry i/p,occ sft,tr frm,micmic,
 carb spks i/p,tr diss/nod pyr,
 sbbly-dom amor.

SANDSTONE:clr-wh,pred vf-med
 w/occ crs-gran,psrt,sbrnd-sbang,
 sph-sbsph,wk sil cmt,lse,abdt
 wh arg mtx,fr-gd inf por,no fluor.

CLAYSTONE:wh-pl gry-pl brnsh
 gry,sft,amor,com diss pyr,tr carb
 frags.

SANDSTONE:clr-trnsI,vf-crs
 w/com vcrs-gran,psrt,sbrnd-
 sbang,wk sil cmt,lse,arg mtx,
 fr-gd inf por,no fluor.

SILTSTONE:med gry,occ brn,
 lt gry i/p,occ sft,tr frm,micmic,
 carb spks i/p,tr diss & nod pyr,
 sbbly-dom amor.

Survey @ 3317.5m: 3.72° 47.7Az

SANDSTONE:clr-trnsI,vf-crs
 w/com vcrs-gran,psrt,sbrnd-
 sbang,wk sil cmt,lse,arg mtx,
 fr-gd inf por,no fluor.

COAL:blk-dk brn,sft-v hd,
 & splty,g/t carb SLTST,
 pyr cmt i/p,unevn.

SANDSTONE:clr-trnsI,off wh,
 vf-crs,occ vcrs,pred med grs,v pr
 srt,sbang-ang,wk sil cmt,lse,gd
 inf por,no fluor.

Survey @ 3346.4m: 3.65° 50.4Az

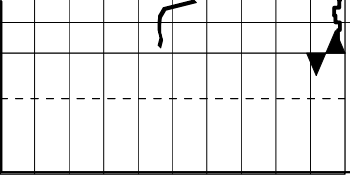
SILTSTONE:lt brnsh gy-brnsh
 gy,v sft-sft,sbbly-amor,
 com carb spks & laminae,v arg,
 tr vhd silic stst,diss pyr i/p.

CLAYSTONE:wh-pl gry,pl brnsh
 gry i/p,sft,amor,com diss pyr,tr
 carb frags.

Survey @ 3375.0m: 3.69° 54.0Az

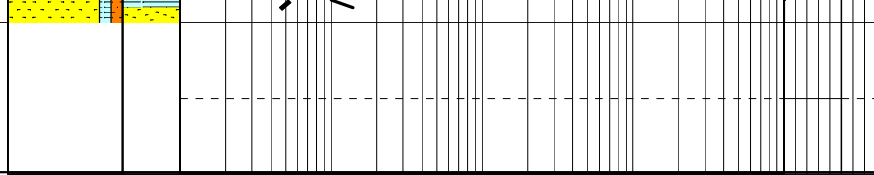
SANDSTONE:dom wh,v lt gry,rr
 clr-trnsI,vf-med,mod srt,sbang-
 sbrnd,abdt wh arg mtx i/p,com
 spprtd & g/t Arg SST i/p,tr carb,
 dom sft-fr,mnr lse,pr-fr inf & vis
 por,no fluor.

BIT #3 HYCALOG ???



3400
(3396.4)

3410



SIZE:311mm
JETS:AxB
IN: 3402m OUT: xxxxm
RUN: m HRS:
COND:

