

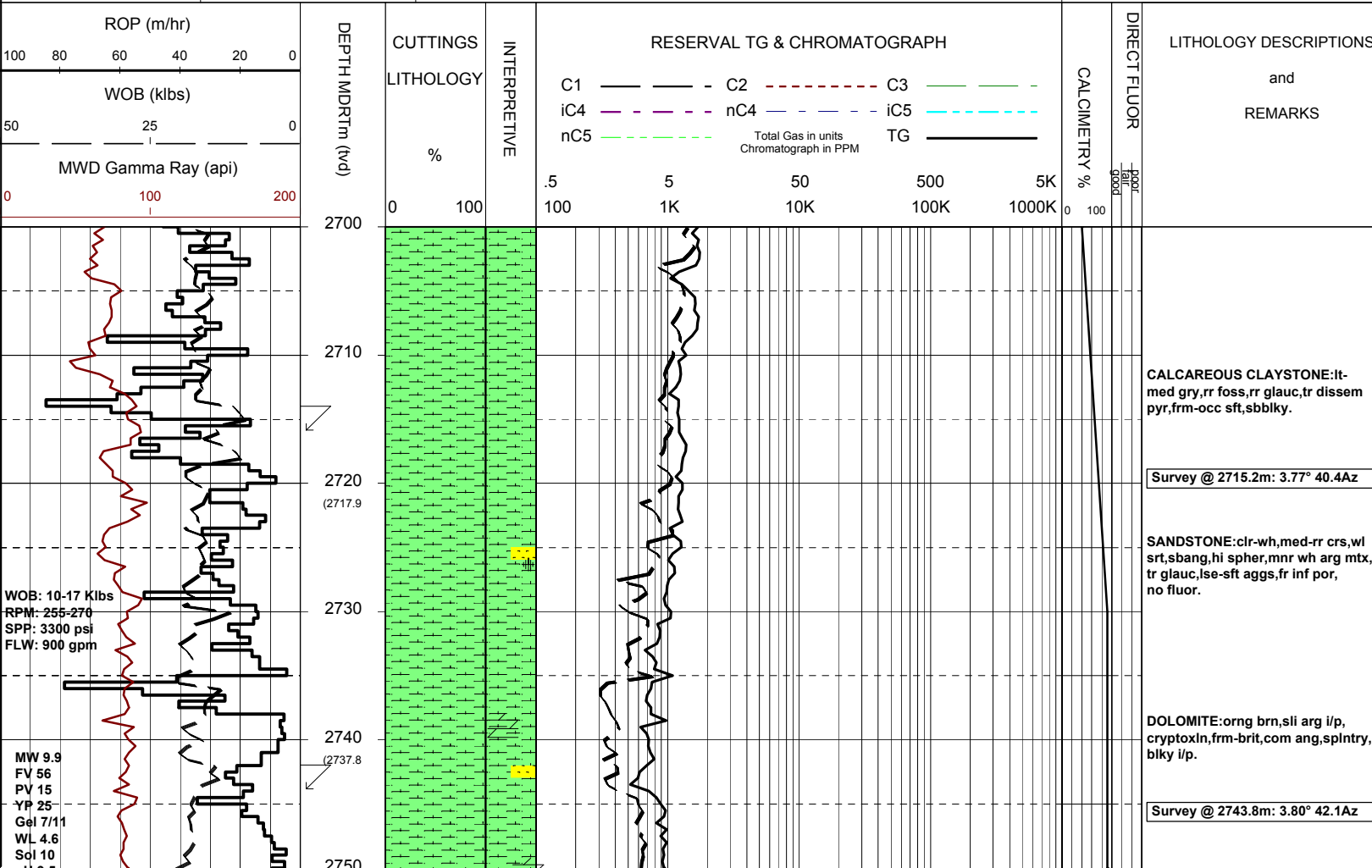


MASTERLOG CULVERIN-1



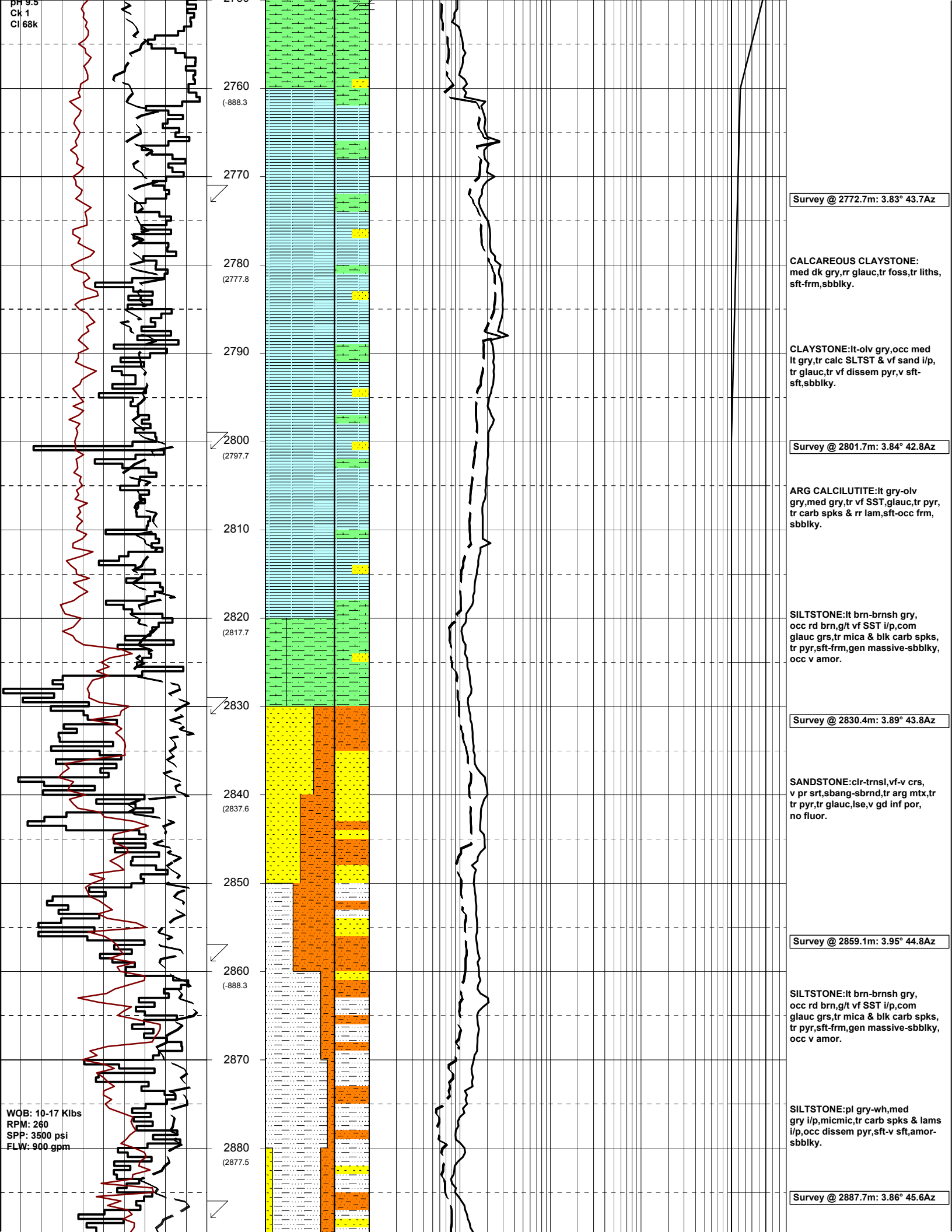
GENERAL	POSITION	HOLE / CASING INFO	DATE / DEPTH	ENGINEERS
Country : AUSTRALIA	Latitude : 38°24'08.14"S	914mm (36") hole to mMDRT: 650.0m	Spud Date : 16-12-05	D.ADDERLEY
Permit : VIC/P-56	Longitude : 148°39'14.92"E	445mm (17 1/2") hole to mMDRT: 1525m	Total Depth Date : xx-xx-05	T.PLATT
Field : GIPPSLAND	UTM Co-ord X (m E):644 440	311mm (12 1/4") hole to mMDRT: m	Total Depth (mMDRT): m	A.DUNN
Basin : GIPPSLAND	UTM Co-ord Y (m N):5 748 250	762mm (30") Cond. to mMDRT: 650m	True Vertical Depth (mTVDSS): m	S.PROSSER
Well Type : EXPLORATION RT to MSL (m): 22		340mm (13 3/8") Csg to mMDRT: 1511m	Log Scale : 1/ 500	
Rig Name : OCEAN PATRIOT to Sea Bed (m): 607			Final Status :	

ABBREVIATIONS		LITHOLOGY LEGEND				ENGINEERING LEGEND	
MW Mud Weight	WOB Weight on Bit (klbs)	Claystone	Marl	Lithic Fragment	Cement	Shoe	
FV Funnel Viscosity	RPM Rotations Per Min	Siltstone	Clay, Limestone	Foraminifera	Glaucconite	Deviation survey	← RFT
PV Plastic Viscosity	FLW Flow Rate (gpm)	Shale	Limestone	Fossils	Pyrite	DST	← FIT
YP Yield Point	SPP Pump Pressure (psi)	Fine SST	Dolomite	Bryozoa	Iron Minerals	Test	↘ Mud loss
Gel Gel Strength	RR Re-Run Bit	Medium SST	Coal	Sponges	Mica	Sidewall Core	↗ Mud gain
WL Water Loss	TG Trip Gas	Coarse SST	Arg. Siltstone	Brachiopoda	Carb Fragments	Core	
KCl Potassium Chloride	CG Connection Gas						
Cl Chlorides	BG Background Gas						
Incl Inclination	DGP Drilled Gas Peak						
Az Azimuth	MM Mud Motor						



WOB: 10-17 Klbs
RPM: 255-270
SPP: 3300 psi
FLW: 900 gpm

MW 9.9
FV 56
PV 15
YP 25
Gel 7/11
WL 4.6
Sol 10



2760
(-888.3)
2770
2780
(2777.8)
2790
2800
(2797.7)
2810
2820
(2817.7)
2830
2840
(2837.6)
2850
2860
(-888.3)
2870
2880
(2877.5)

Survey @ 2772.7m: 3.83° 43.7Az

CALCAREOUS CLAYSTONE:
med dk gry,rr glauc,tr foss,tr liths,
sft-frn,sbbiky.

CLAYSTONE:lt-olv gry,occ med
lt gry,tr calc SLTST & vf sand i/p,
tr glauc,tr vf dissem pyr,v sft-
sft,sbbiky.

Survey @ 2801.7m: 3.84° 42.8Az

ARG CALCILUTITE:lt gry-olv
gry,med gry,tr vf SST,glauc,tr pyr,
tr carb spks & rr lam,sft-occ frm,
sbbiky.

SILTSTONE:lt brn-brnsh gry,
occ rd brn,g/t vf SST i/p,com
glauc grs,tr mica & blk carb spks,
tr pyr,sft-frn,gen massive-sbbiky,
occ v amor.

Survey @ 2830.4m: 3.89° 43.8Az

SANDSTONE:clr-trnsl,vf-v crs,
v pr srt,sbang-sbrnd,tr arg mtx,tr
tr pyr,tr glauc,lse,v gd inf por,
no fluor.

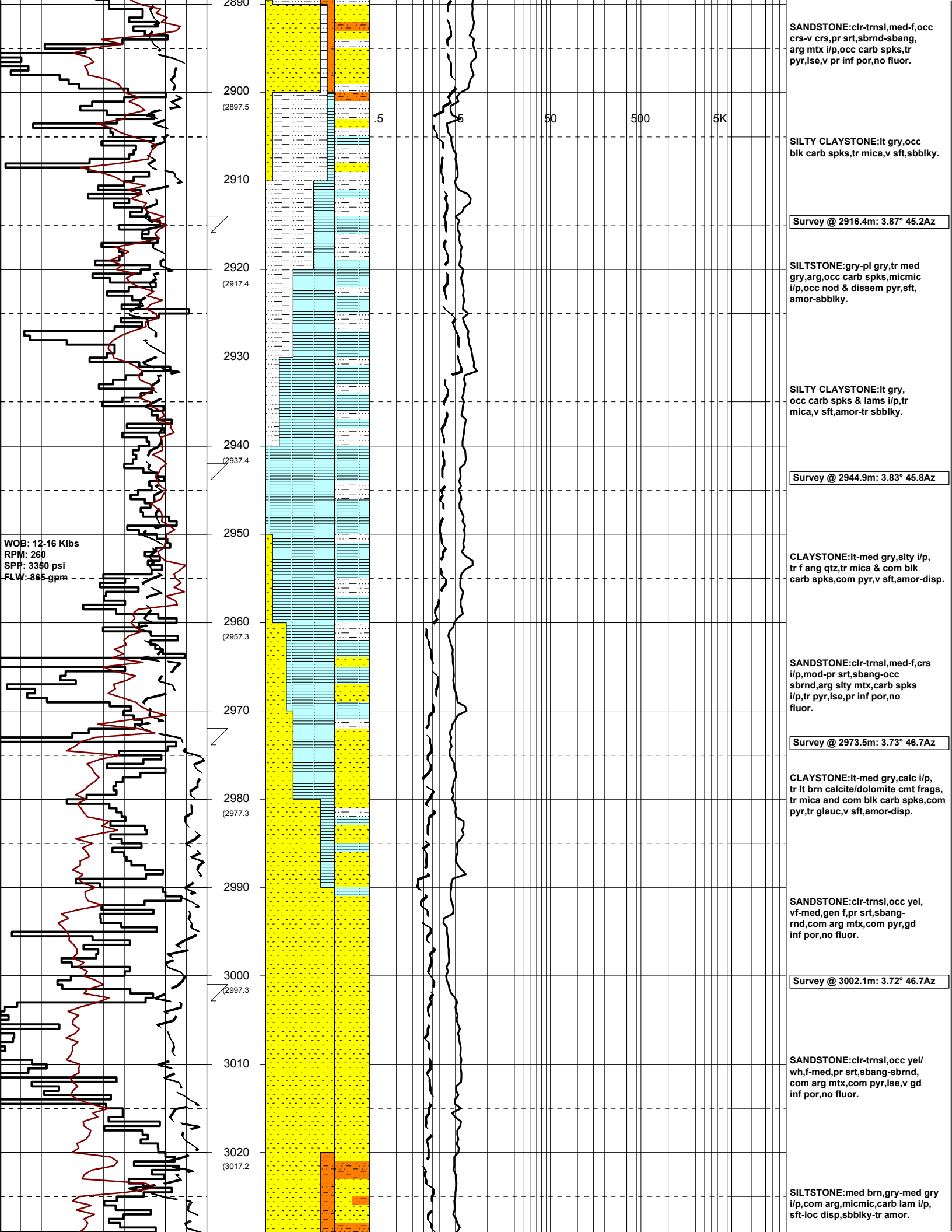
Survey @ 2859.1m: 3.95° 44.8Az

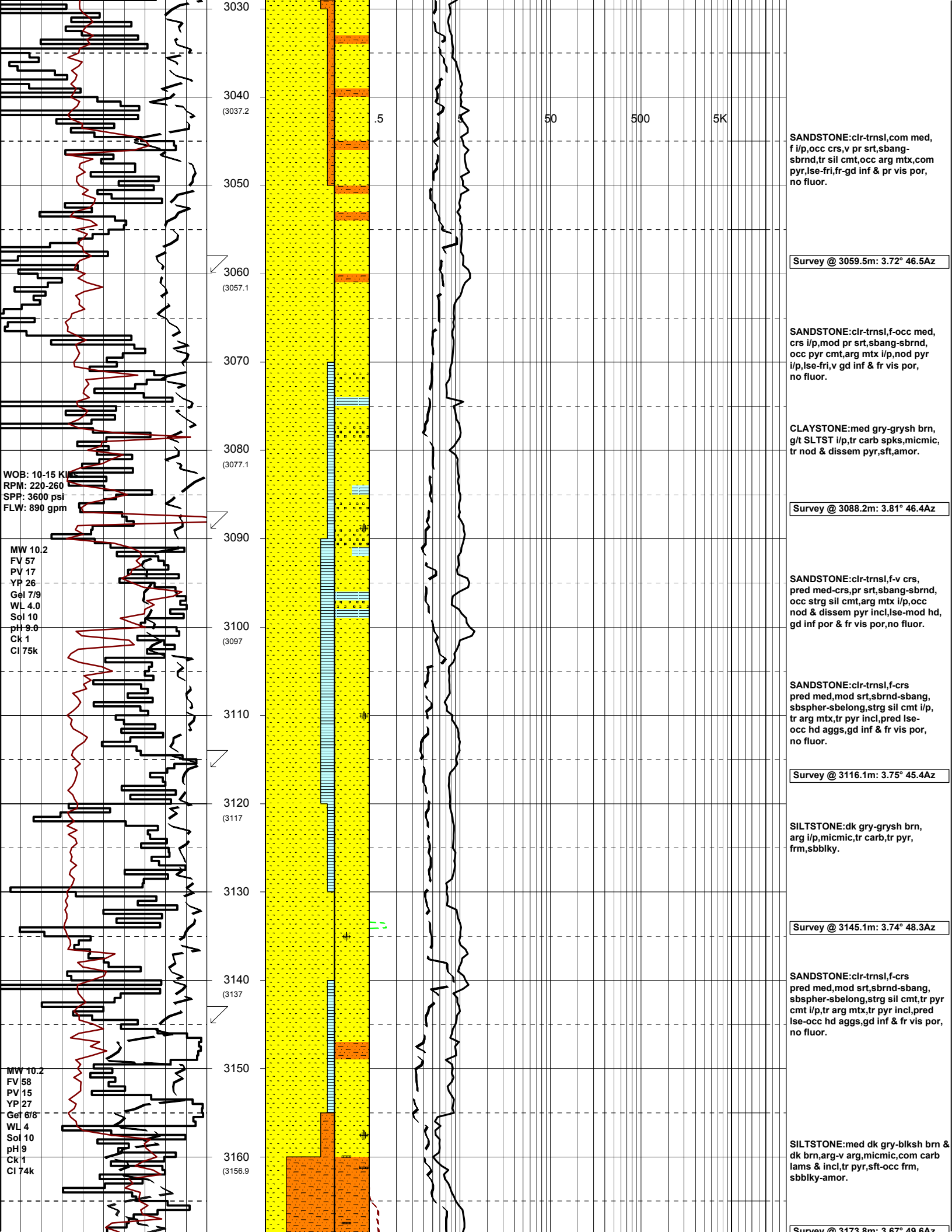
SILTSTONE:lt brn-brnsh gry,
occ rd brn,g/t vf SST i/p,com
glauc grs,tr mica & blk carb spks,
tr pyr,sft-frn,gen massive-sbbiky,
occ v amor.

SILTSTONE:pl gry-wh,med
gry i/p,micnic,tr carb spks & lams
i/p,occ dissem pyr,sft-v sft,amor-
sbbiky.

Survey @ 2887.7m: 3.86° 45.6Az

WOB: 10-17 Klbs
RPM: 260
SPP: 3500 psi
FLW: 900 gpm





SANDSTONE:clr-opq,med-v crs, p srt,sbang-sbrnd,occ strg sil & pyr cmt,tr arg mtx,pred lse,mod hd i/p,fr vis & gd inf por,no fluor.

SILTSTONE:med dk gry-med gry, brn-dk brn,arg-v arg,micmic,com carb lams & incl,tr pyr,sft,occ frm-fri,sbbiky-amor.

SANDSTONE:clr-trnsl,med-gran, p srt,sbang-sbrnd,mod spher,occ frac grs,tr pyr cmt,dom lse-occ mod hd,fr vis & gd inf por,no fluor.

Survey @ 3202.6m: 3.71° 48.9Az

SILTSTONE:brn,med gry/gry i/p, com arg,micmic,carb lams i/p,occ nod pyr,sft-tr frm,sbbiky.

SANDSTONE:clr-trnsl,med-f,mod-pr srt,sbrnd-sbang,tr calcite/dol cmt,occ nod pyr,lse-fri,fr vis & mod inf por,no fluor.

CLAYSTONE:lt-med brn gry, slty i/p,g/t arg SLTST i/p,com carb spks & lams,tr hd dol/calcite frags,tr pyr,v sft-tr frm,sbbiky-amor.

Survey @ 3231.7m: 3.53° 48.9Az

SILTSTONE:brn/gry-lt brn,occ lt gry,arg,occ g/t CLYST,com carb spks & lams,tr pyr,v sft-frm, sbbiky-amor.

CLAYSTONE:lt gry,occ brn/gry, aren i/p,occ g/t SLTST,tr carb spks, v sft,com amor.

Survey @ 3260.4m: 3.66° 49.9Az

SILTSTONE:med gry,occ brn, lt gry i/p,micmic,carb spks i/p, tr disse & nod pyr,occ sft,fr frm, sbbiky-dom amor.

SANDSTONE:clr-wh,pred vf-med w/occ crs-gran,p srt,sbrnd-sbang, spher-sbspher,wk sil cmt,abdt wh arg mtx,lse,fr-gd inf por,no fluor.

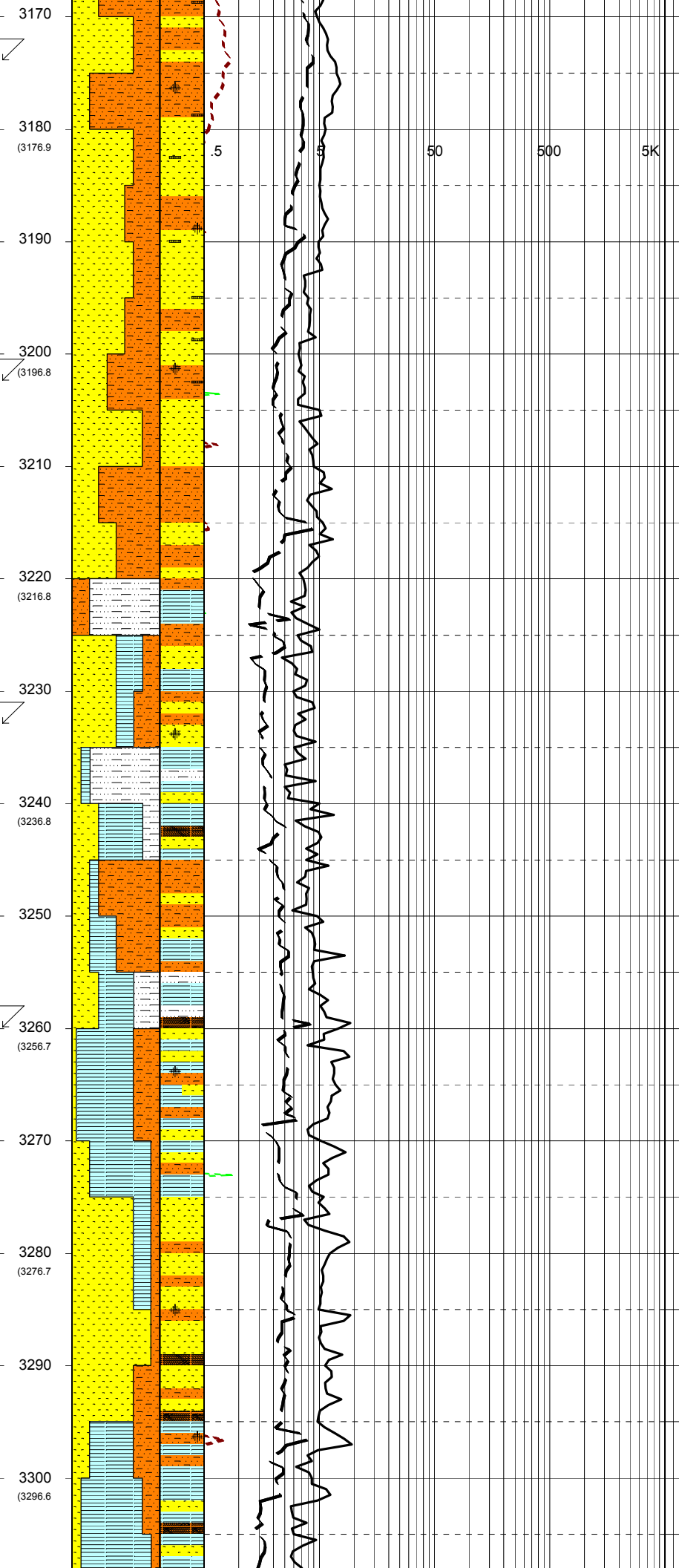
CLAYSTONE:wh-pl gry-pl brnsh gry,com disse pyr,tr carb frags, sft,amor.

SANDSTONE:clr-trnsl,vf-crs w/com v crs-gran,p srt,sbrnd-sbang,wk sil cmt,arg mtx,lse, fr-gd inf por,no fluor.

WOB: 4-15 Klbs
RPM: 220-260
SPP: 3650 psi
FLW: 860 gpm

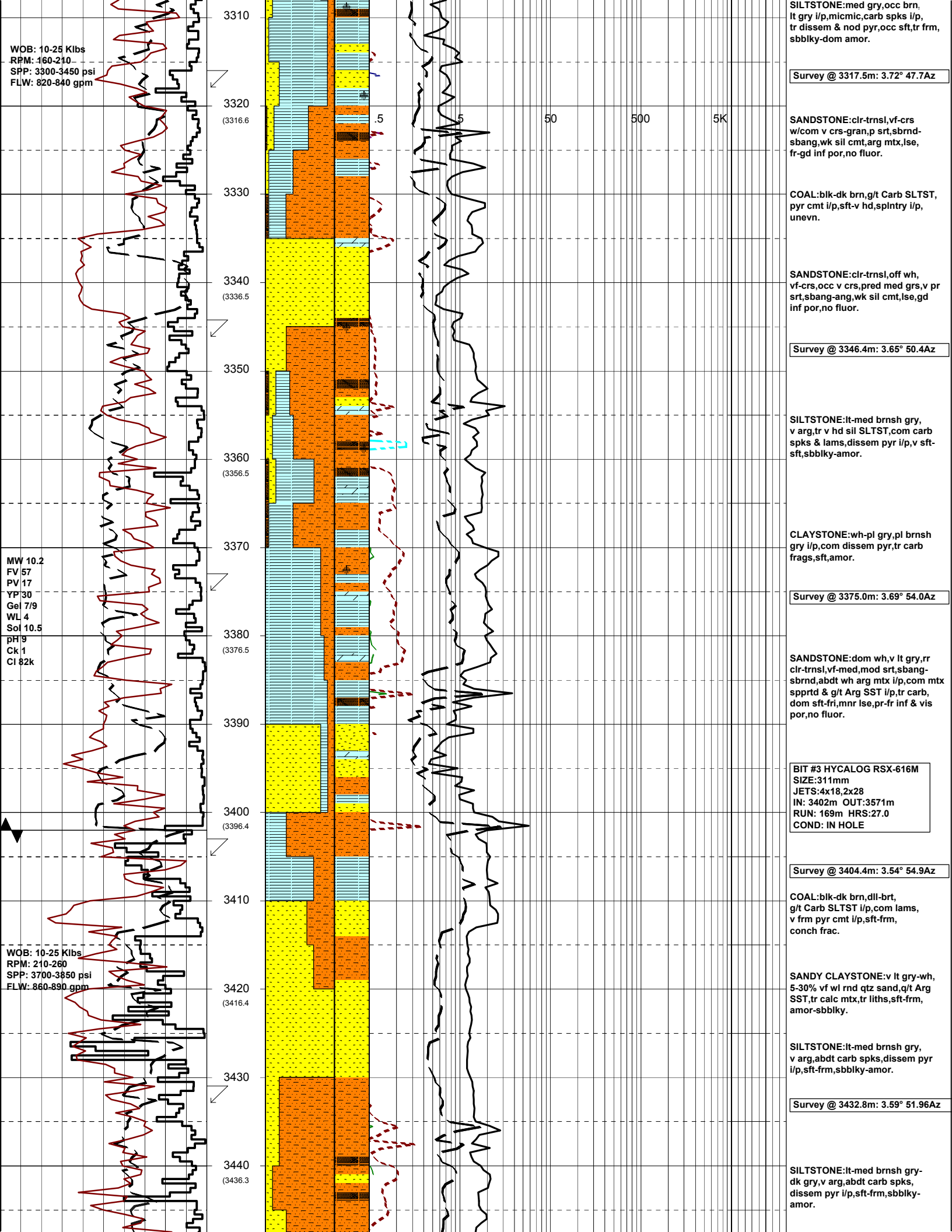
WOB: 10-24 Klbs
RPM: 190-275
SPP: 3400-3750 psi
FLW: 860-890 gpm

MW 10.3
FV 57
PV 17
YP 26
Gel 6/9
WL 4
Sol 10.5
pH 9
Ck 1
Cl 81.5k



3170
3180 (3176.9)
3190
3200 (3196.8)
3210
3220 (3216.8)
3230
3240 (3236.8)
3250
3260 (3256.7)
3270
3280 (3276.7)
3290
3300 (3296.6)

5 50 500 5K



WOB: 10-25 Klbs
 RPM: 160-210
 SPP: 3300-3450 psi
 FLW: 820-840 gpm

Survey @ 3317.5m: 3.72° 47.7Az

SANDSTONE:clr-trnsl,vf-crs w/com v crs-gran,p srt,sbrnd-sbang,wk sil cmt,arg mtx,lse,fr-gd inf por,no fluor.

COAL:blk-dk brn,g/t Carb SLTST, pyr cmt i/p,sft-v hd,splntry i/p,unevn.

SANDSTONE:clr-trnsl,off wh,vf-crs,occ v crs,pred med grs,v pr srt,sbang-ang,wk sil cmt,lse,gd inf por,no fluor.

Survey @ 3346.4m: 3.65° 50.4Az

SILTSTONE:lt-med brnsh gry,v arg,tr v hd sil SLTST,com carb spks & lams,disseem pyr i/p,v sft-sft,sbbiky-amor.

CLAYSTONE:wh-pl gry,pl brnsh gry i/p,com disseem pyr,tr carb frags,sft,amor.

Survey @ 3375.0m: 3.69° 54.0Az

SANDSTONE:dom wh,v lt gry,rr clr-trnsl,vf-med,mod srt,sbang-sbrnd,abdt wh arg mtx i/p,com mtz spprt & g/t Arg SST i/p,tr carb,dom sft-fri,mnr lse,pr-fr inf & vis por,no fluor.

BIT #3 HYCALOG RSX-616M
 SIZE:311mm
 JETS:4x18,2x28
 IN: 3402m OUT:3571m
 RUN: 169m HRS:27.0
 COND: IN HOLE

Survey @ 3404.4m: 3.54° 54.9Az

COAL:blk-dk brn,dll-brt,g/t Carb SLTST i/p,com lams,v frm pyr cmt i/p,sft-frm,conch frac.

SANDY CLAYSTONE:v lt gry-wh,5-30% vf wl rnd qtz sand,q/t Arg SST,tr calc mtx,tr liths,sft-frm,amor-sbbiky.

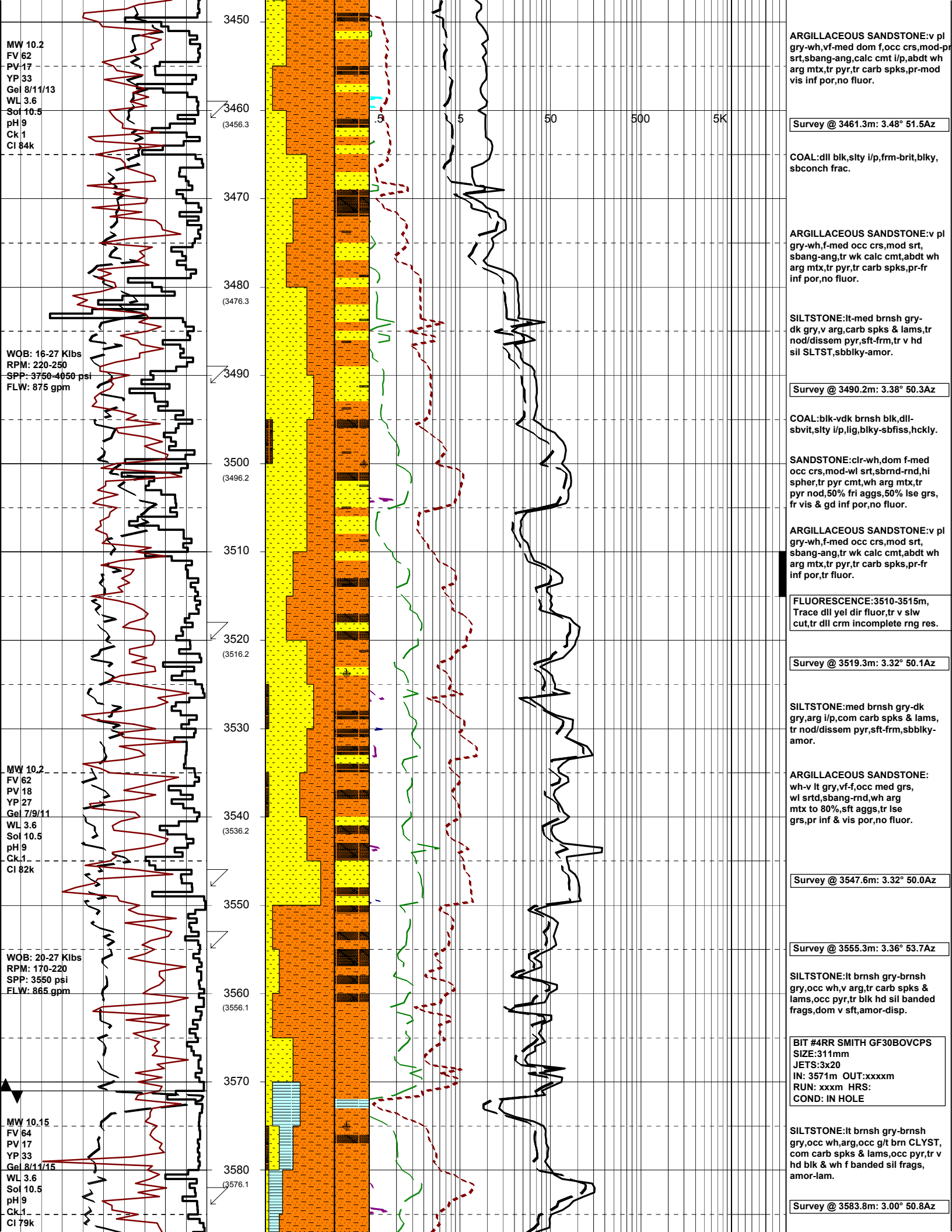
SILTSTONE:lt-med brnsh gry,v arg,abdt carb spks,disseem pyr i/p,sft-frm,sbbiky-amor.

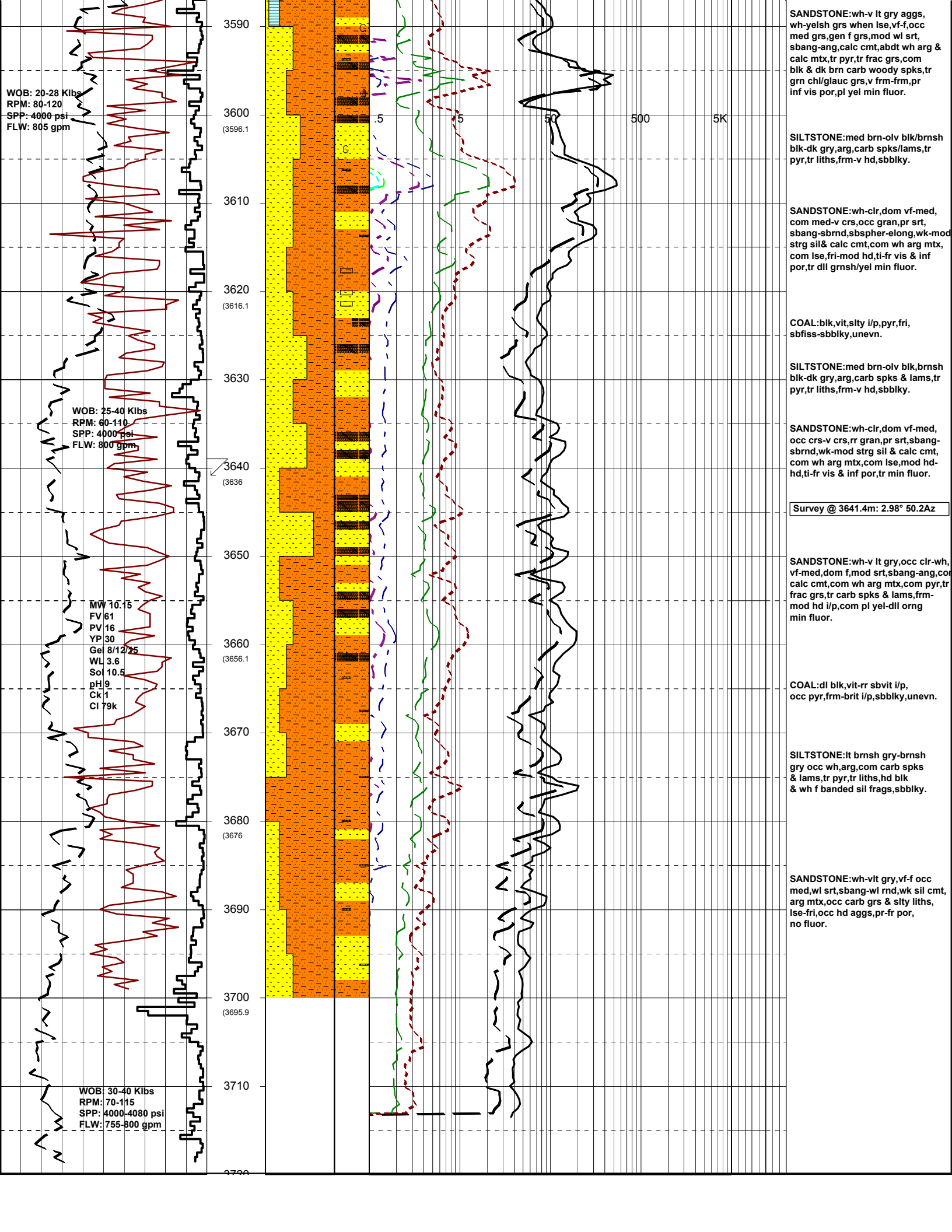
Survey @ 3432.8m: 3.59° 51.96Az

SILTSTONE:lt-med brnsh gry-dk gry,v arg,abdt carb spks,disseem pyr i/p,sft-frm,sbbiky-amor.

MW 10.2
 FV 57
 PV 17
 YP 30
 Gel 7/9
 WL 4
 Sol 10.5
 pH 9
 Ck 1
 CI 82k

WOB: 10-25 Klbs
 RPM: 210-260
 SPP: 3700-3850 psi
 FLW: 860-890 gpm





SANDSTONE:wh-v lt gry aggs, wh-yelsh grs when lse,vf-f,occ med grs,gen f grs,mod wl srt, sbang-ang,calc cmt,abd't wh arg & calc mtx,tr pyr,tr frac grs,com blk & dk brn carb woody spks,tr grn chl/glauc grs,v frm-frm,pr inf vis por,pl yel min fluor.

SILTSTONE:med brn-olv blk/brnsh blk-dk gry,arg,carb spks/lams,tr pyr,tr liths,frm-v hd,sbbkly.

SANDSTONE:wh-clr,dom vf-med com med-v crs,occ gran,pr srt, sbang-sbrnd,sbspher-elong,wk-mod strg sil & calc cmt,com wh arg mtx, com lse,fri-mod hd,ti-fr vis & inf por,tr dll grnsh/yl min fluor.

COAL:blk,vit,slty i/p,pyr,fri, sbfiss-sbbkly,unevn.

SILTSTONE:med brn-olv blk,brnsh blk-dk gry,arg,carb spks & lams,tr pyr,tr liths,frm-v hd,sbbkly.

SANDSTONE:wh-clr,dom vf-med, occ crs-v crs,rr gran,pr srt,sbang-sbrnd,wk-mod strg sil & calc cmt, com wh arg mtx,com lse,mod hd,ti-fr vis & inf por,tr min fluor.

Survey @ 3641.4m: 2.98° 50.2Az

SANDSTONE:wh-v lt gry,occ clr-wh, vf-med,dom f,mod srt,sbang-ang,co calc cmt,com wh arg mtx,com pyr,tr frac grs,tr carb spks & lams,frm-mod hd i/p,com pl yel-dll org min fluor.

COAL:dl blk,vit-rr sbvit i/p, occ pyr,frm-brit i/p,sbbkly,unevn.

SILTSTONE:lt brnsh gry-brnsh gry occ wh,arg,com carb spks & lams,tr pyr,tr liths,hd blk & wh f banded sil frags,sbbkly.

SANDSTONE:wh-vit gry,vf-f occ med,wl srt,sbang-wl rnd,wk sil cmt, arg mtx,occ carb grs & slty liths, lse-fri,occ hd aggs,pr-fr por, no fluor.

