

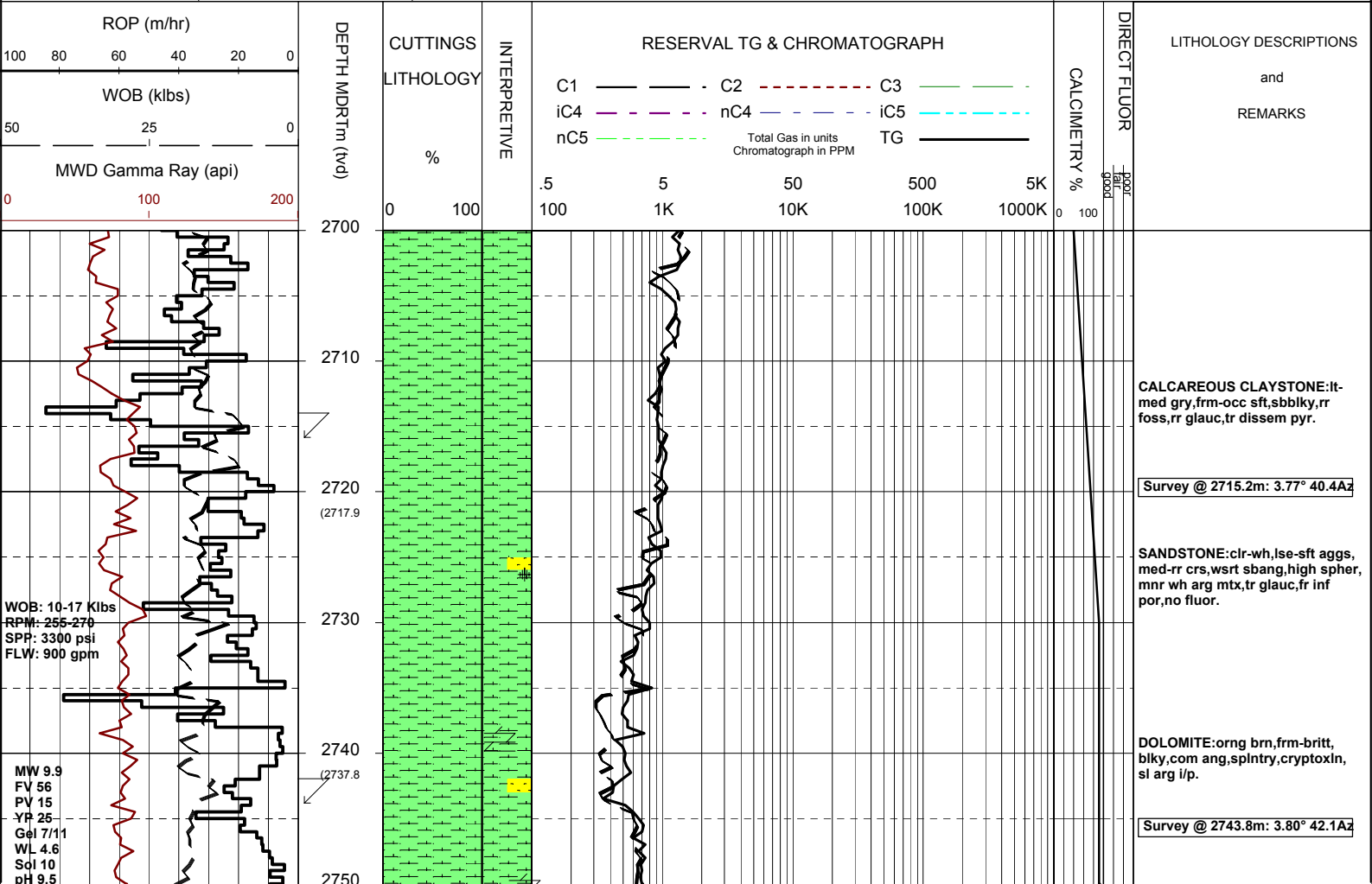


MASTERLOG CULVERIN-1



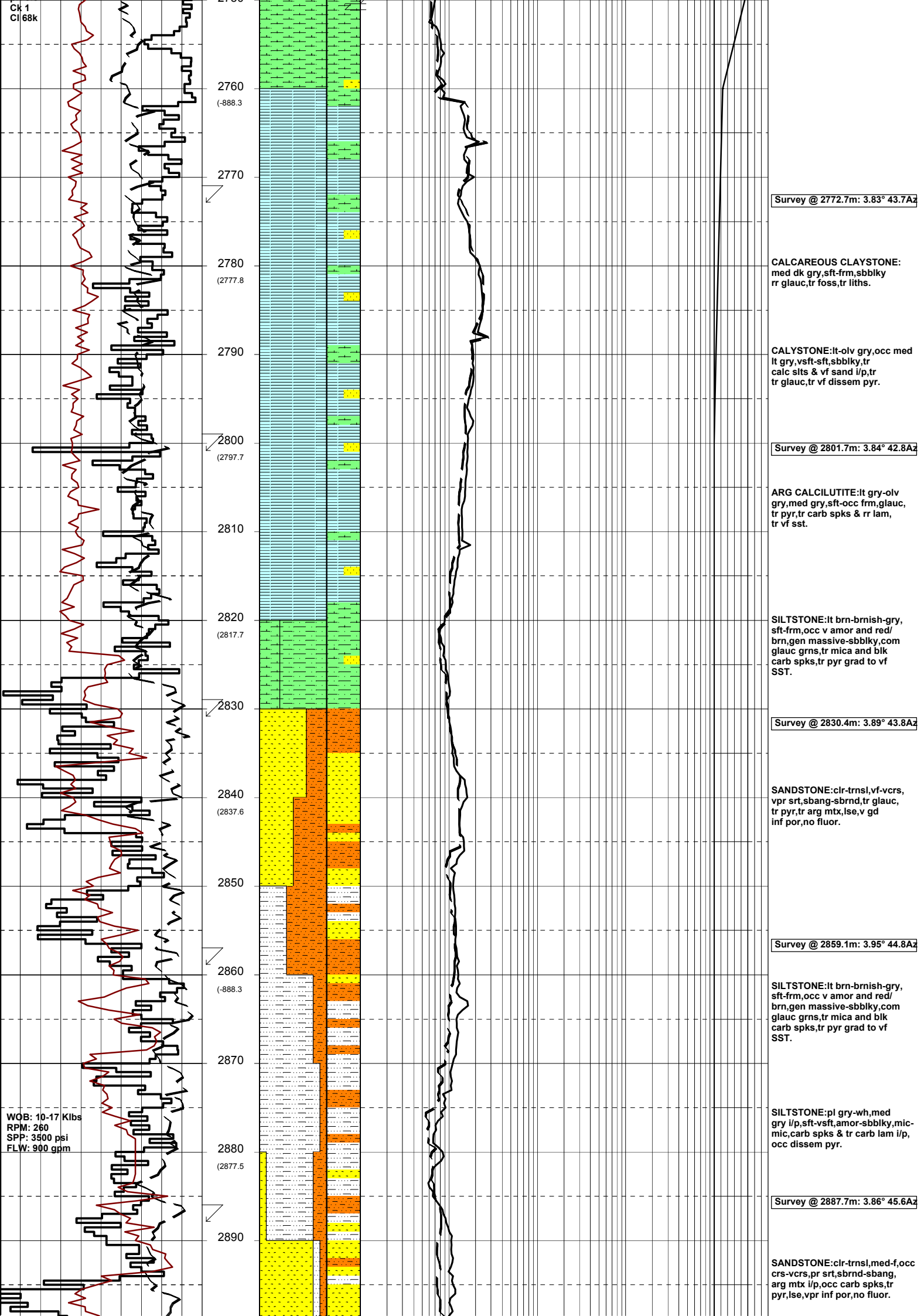
GENERAL	POSITION	HOLE / CASING INFO	DATE / DEPTH	ENGINEERS
Country : AUSTRALIA	Latitude : 38°24'08.14"S	914mm (36") hole to mMDRT: 650.0m	Spud Date : 16-12-05	D.ADDERLEY
Permit : VIC/P-56	Longitude : 148°39'14.92"E	445mm (17 1/2") hole to mMDRT: 1525m	Total Depth Date : xx-xx-05	T.PLATT
Field : GIPPSLAND	UTM Co-ord X (m E):644 440	311mm (12 1/4") hole to mMDRT: m	Total Depth (mMDRT): m	A.DUNN
Basin : GIPPSLAND	UTM Co-ord Y (m N):5 748 250	762mm (30") Cond. to mMDRT: 650m	True Vertical Depth (mTVDSS): m	S.PROSSER
Well Type : EXPLORATION	RT to MSL (m): 22	340mm (13 3/8") Csg to mMDRT: 1511m	Log Scale : 1/ 500	
Rig Name : OCEAN PATRIOT	RT to Sea Bed (m): 607		Final Status :	

ABBREVIATIONS		LITHOLOGY LEGEND				ENGINEERING LEGEND	
MW Mud Weight	WOB Weight on Bit (klbs)	Claystone	Marl	Lithic Fragment	Cement	Shoe	
FV Funnel Viscosity	RPM Rotations Per Min	Siltstone	Clay, Limestone	Foraminifera	Glauconite	Deviation survey ← RFT	
PV Plastic Viscosity	FLW Flow Rate (gpm)	Shale	Limestone	Fossils	Pyrite	DST ← FIT	
YP Yield Point	SPP Pump Pressure (psi)	Fine SST	Dolomite	Bryozoa	Iron Minerals	TEST → Mud loss	
Gel Gel Strength	RR Re-Run Bit	Medium SST	Coal	Sponges	Mica	Sidewall Core	
WL Water Loss	TG Trip Gas	Coarse SST	Arg. Siltstone	Brachiopoda	Carb Fragments	Core	
KCI Potassium Chloride	CG Connection Gas						
Cl Chlorides	BG Background Gas						
Incl Inclination	DGP Drilled Gas Peak						
Az Azimuth	MM Mud Motor						



WOB: 10-17 Klbs
 RPM: 255-270
 SPP: 3300 psi
 FLW: 900 gpm

MW 9.9
 FV 56
 PV 15
 YP 25
 Gel 7/11
 WL 4.6
 Sol 10
 pH 9.5



2750
2760 (-888.3)
2770
2780 (2777.8)
2790
2800 (2797.7)
2810
2820 (2817.7)
2830
2840 (2837.6)
2850
2860 (-888.3)
2870
2880 (2877.5)
2890

Survey @ 2772.7m: 3.83° 43.7Az

CALCAREOUS CLAYSTONE:
med dk gry,sft-frm,sbbiky
rr glauc,tr foss,tr liths.

CALYSTONE:lt-olv gry,occ med
lt gry,vsft-sft,sbbiky,tr
calc slts & vf sand i/p,tr
tr glauc,tr vf dissep pyr.

Survey @ 2801.7m: 3.84° 42.8Az

ARG CALCILUTITE:lt gry-olv
gry,med gry,sft-occ frm,glauc,
tr pyr,tr carb spks & rr lam,
tr vf sst.

SILTSTONE:lt brn-brnish-gry,
sft-frm,occ v amor and red/
brn,gen massive-sbbiky,com
glauc grns,tr mica and blk
carb spks,tr pyr grad to vf
SST.

Survey @ 2830.4m: 3.89° 43.8Az

SANDSTONE:clr-trnsl,vf-vcrs,
vpr srt,sbang-sbrnd,tr glauc,
tr pyr,tr arg mtx,lse,v gd
inf por,no fluor.

Survey @ 2859.1m: 3.95° 44.8Az

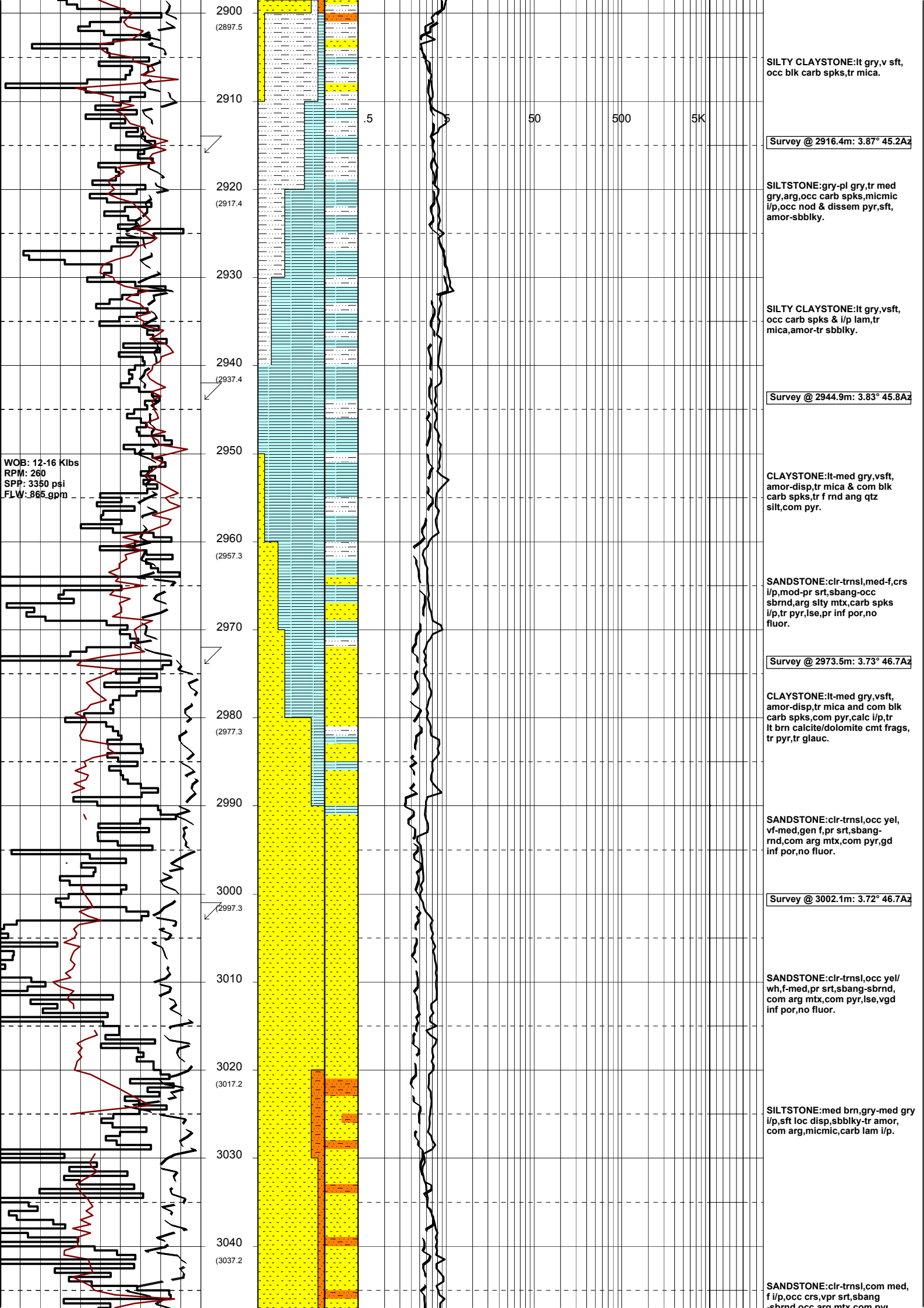
SILTSTONE:lt brn-brnish-gry,
sft-frm,occ v amor and red/
brn,gen massive-sbbiky,com
glauc grns,tr mica and blk
carb spks,tr pyr grad to vf
SST.

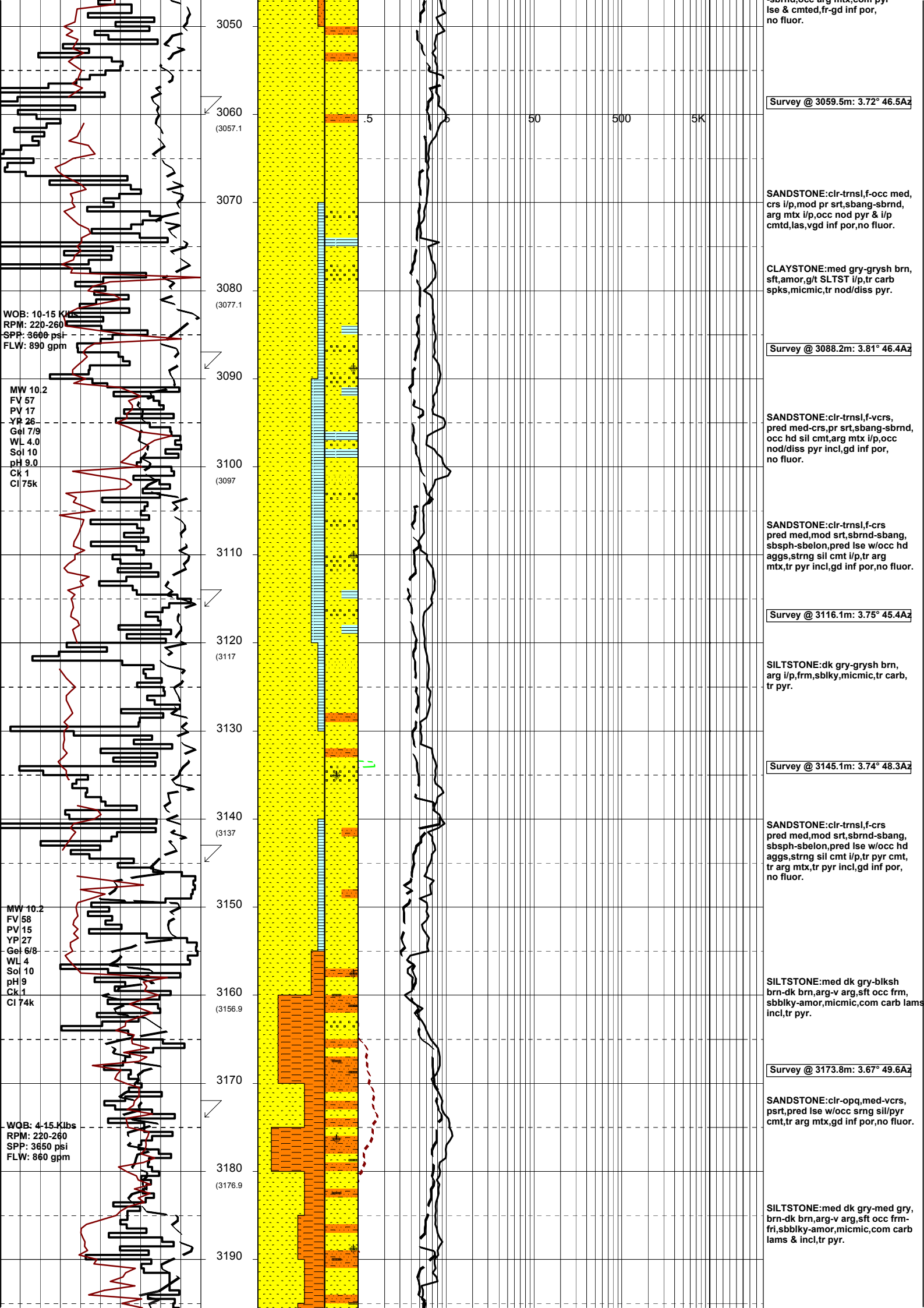
SILTSTONE:pl gry-wh,med
gry i/p,sft-vsft,amor-sbbiky,mic-
mic,carb spks & tr carb lam i/p,
occ dissep pyr.

Survey @ 2887.7m: 3.86° 45.6Az

SANDSTONE:clr-trnsl,med-f,occ
crs-vcrs,pr srt,sbrnd-sbang,
arg mtx i/p,occ carb spks,tr
pyr,lse,vpr inf por,no fluor.

WOB: 10-17 Klbs
RPM: 260
SPP: 3500 psi
FLW: 900 gpm





SANDSTONE:clr-trnsl,com pyr
lse & cmted,fr-gd inf por,
no fluor.

Survey @ 3059.5m: 3.72° 46.5Az

SANDSTONE:clr-trnsl,f-occ med,
crs i/p,mod pr srt,sbang-sbrnd,
arg mtx i/p,occ nod pyr & i/p
cmted,las,vgd inf por,no fluor.

CLAYSTONE:med gry-grysh brn,
sft,amor,g/t SLTST i/p,tr carb
spks,micmic,tr nod/diss pyr.

Survey @ 3088.2m: 3.81° 46.4Az

WOB: 10-15 Klb
RPM: 220-260
SPP: 3600 psi
FLW: 890 gpm

SANDSTONE:clr-trnsl,f-vcrs,
pred med-crs,pr srt,sbang-sbrnd,
occ hd sil cmt,arg mtx i/p,occ
nod/diss pyr incl,gd inf por,
no fluor.

MW 10.2
FV 57
PV 17
YP 26
Gel 7/9
WL 4.0
Sol 10
pH 9.0
Ck 1
Cl 75k

SANDSTONE:clr-trnsl,f-crs
pred med,mod srt,sbrnd-sbang,
sbsph-sbelon,pred lse w/occ hd
aggs,strng sil cmt i/p,tr arg
mtx,tr pyr incl,gd inf por,no fluor.

Survey @ 3116.1m: 3.75° 45.4Az

SILTSTONE:dk gry-grysh brn,
arg i/p,frm,sblky,micmic,tr carb,
tr pyr.

Survey @ 3145.1m: 3.74° 48.3Az

SANDSTONE:clr-trnsl,f-crs
pred med,mod srt,sbrnd-sbang,
sbsph-sbelon,pred lse w/occ hd
aggs,strng sil cmt i/p,tr pyr cmt,
tr arg mtx,tr pyr incl,gd inf por,
no fluor.

MW 10.2
FV 58
PV 15
YP 27
Gel 6/8
WL 4
Sol 10
pH 9
Ck 1
Cl 74k

SILTSTONE:med dk gry-blksh
brn-dk brn,arg-v arg,sft occ frm,
sbbky-amor,micmic,com carb lams
incl,tr pyr.

Survey @ 3173.8m: 3.67° 49.6Az

SANDSTONE:clr-opq,med-vcrs,
psrt,pred lse w/occ srng sil/pyr
cmt,tr arg mtx,gd inf por,no fluor.

WQB: 4-15 Klbs
RPM: 220-260
SPP: 3650 psi
FLW: 860 gpm

SILTSTONE:med dk gry-med gry,
brn-dk brn,arg-v arg,sft occ frm-
fri,sbbky-amor,micmic,com carb
lams & incl,tr pyr.

