

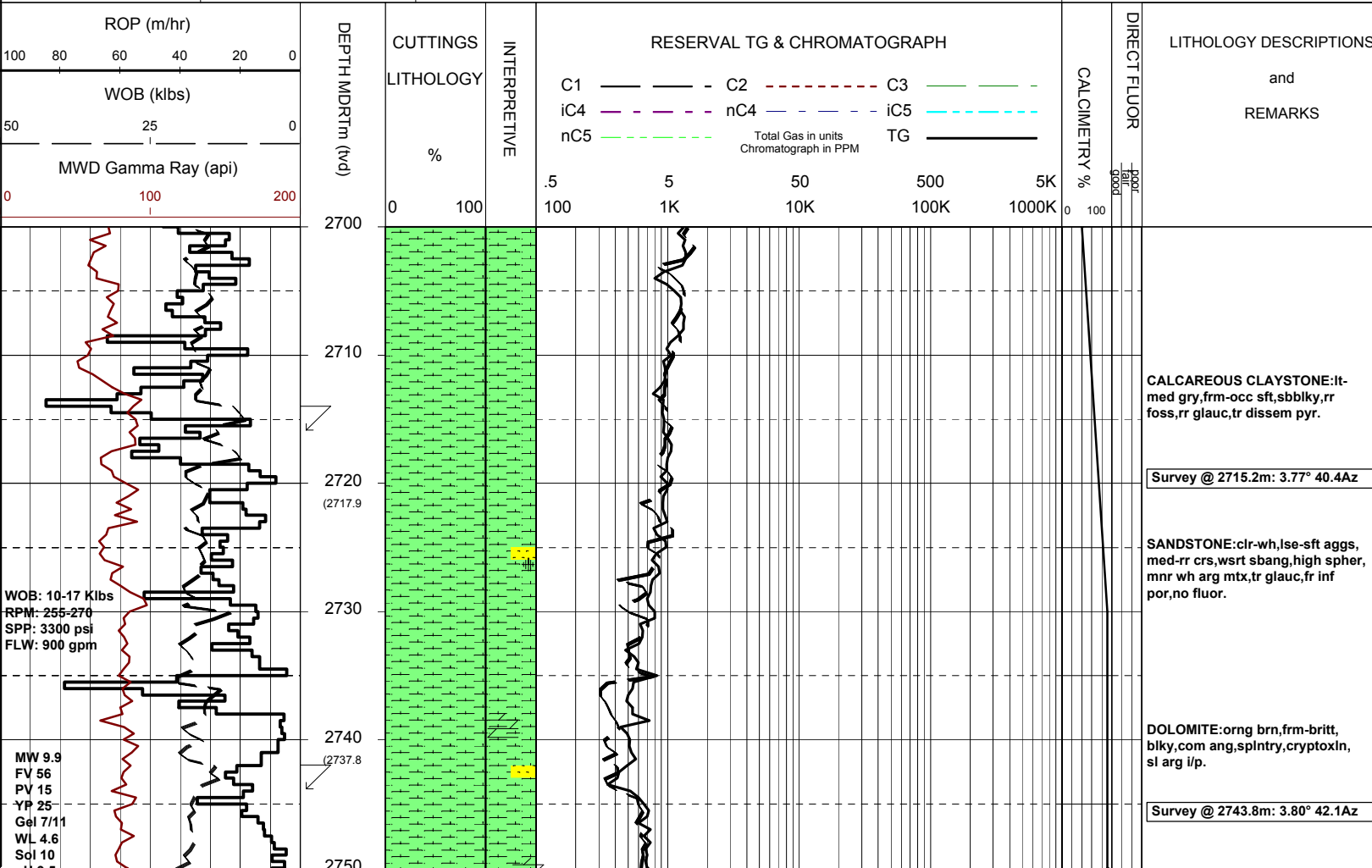


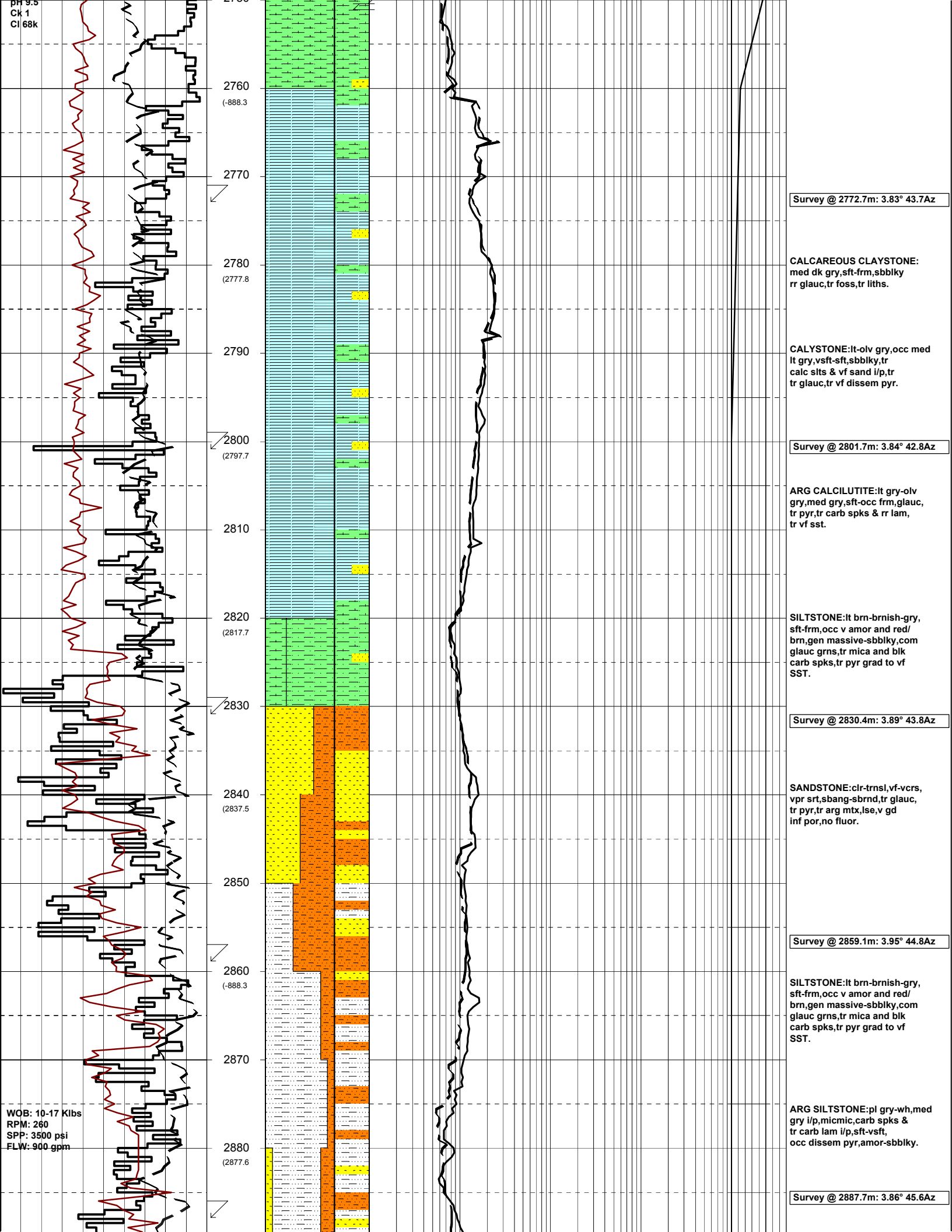
MASTERLOG CULVERIN-1



| GENERAL | POSITION | HOLE / CASING INFO | DATE / DEPTH | ENGINEERS |
|--|------------------------------|--------------------------------------|---------------------------------|------------|
| Country : AUSTRALIA | Latitude : 38°24'08.14"S | 914mm (36") hole to mMDRT: 650.0m | Spud Date : 16-12-05 | D.ADDERLEY |
| Permit : VIC/P-56 | Longitude : 148°39'14.92"E | 445mm (17 1/2") hole to mMDRT: 1525m | Total Depth Date : xx-xx-05 | T.PLATT |
| Field : GIPPSLAND | UTM Co-ord X (m E):644 440 | 311mm (12 1/4") hole to mMDRT: m | Total Depth (mMDRT): m | A.DUNN |
| Basin : GIPPSLAND | UTM Co-ord Y (m N):5 748 250 | 762mm (30") Cond. to mMDRT: 650m | True Vertical Depth (mTVDSS): m | S.PROSSER |
| Well Type : EXPLORATION RT to MSL (m): 22 | | 340mm (13 3/8") Csg to mMDRT: 1511m | Log Scale : 1/ 500 | |
| Rig Name : OCEAN PATRIOT to Sea Bed (m): 607 | | | Final Status : | |

| ABBREVIATIONS | | LITHOLOGY LEGEND | | | | ENGINEERING LEGEND | |
|------------------------|--------------------------|------------------|-----------------|-----------------|----------------|--------------------|------------|
| MW Mud Weight | WOB Weight on Bit (klbs) | Claystone | Marl | Lithic Fragment | Cement | Shoe | |
| FV Funnel Viscosity | RPM Rotations Per Min | Siltstone | Clay, Limestone | Foraminifera | Glauconite | Deviation survey | ← RFT |
| PV Plastic Viscosity | FLW Flow Rate (gpm) | Shale | Limestone | Fossils | Pyrite | DST | ← FIT |
| YP Yield Point | SPP Pump Pressure (psi) | Fine SST | Dolomite | Bryozoa | Iron Minerals | Test | ↘ Mud loss |
| Gel Gel Strength | RR Re-Run Bit | Medium SST | Coal | Sponges | Mica | Sidewall Core | ↗ Mud gain |
| WL Water Loss | TG Trip Gas | Coarse SST | Volcanics | Brachiopoda | Carb Fragments | Core | |
| KCI Potassium Chloride | CG Connection Gas | | | | | | |
| Cl Chlorides | BG Background Gas | | | | | | |
| Incl Inclination | DGP Drilled Gas Peak | | | | | | |
| Az Azimuth | MM Mud Motor | | | | | | |





2760 (-888.3)
2770
2780 (2777.8)
2790
2800 (2797.7)
2810
2820 (2817.7)
2830
2840 (2837.5)
2850
2860 (-888.3)
2870
2880 (2877.6)

Survey @ 2772.7m: 3.83° 43.7Az

CALCAREOUS CLAYSTONE:
med dk gry,sft frm,sbbiky
rr glauc,tr foss,tr liths.

CALYSTONE:lt olv gry,occ med
lt gry,vsft-sft,sbbiky,tr
calc slts & vf sand i/p,tr
tr glauc,tr vf dissep pyr.

Survey @ 2801.7m: 3.84° 42.8Az

ARG CALCILUTITE:lt gry-olv
gry,med gry,sft-occ frm,glauc,
tr pyr,tr carb spks & rr lam,
tr vf sst.

SILTSTONE:lt brn-brnish-gry,
sft-frm,occ v amor and red/
brn,gen massive-sbbiky,com
glauc grns,tr mica and blk
carb spks,tr pyr grad to vf
SST.

Survey @ 2830.4m: 3.89° 43.8Az

SANDSTONE:clr-trnsl,vf-vcrs,
vpr srt,sbang-sbrnd,tr glauc,
tr pyr,tr arg mtx,lse,v gd
inf por,no fluor.

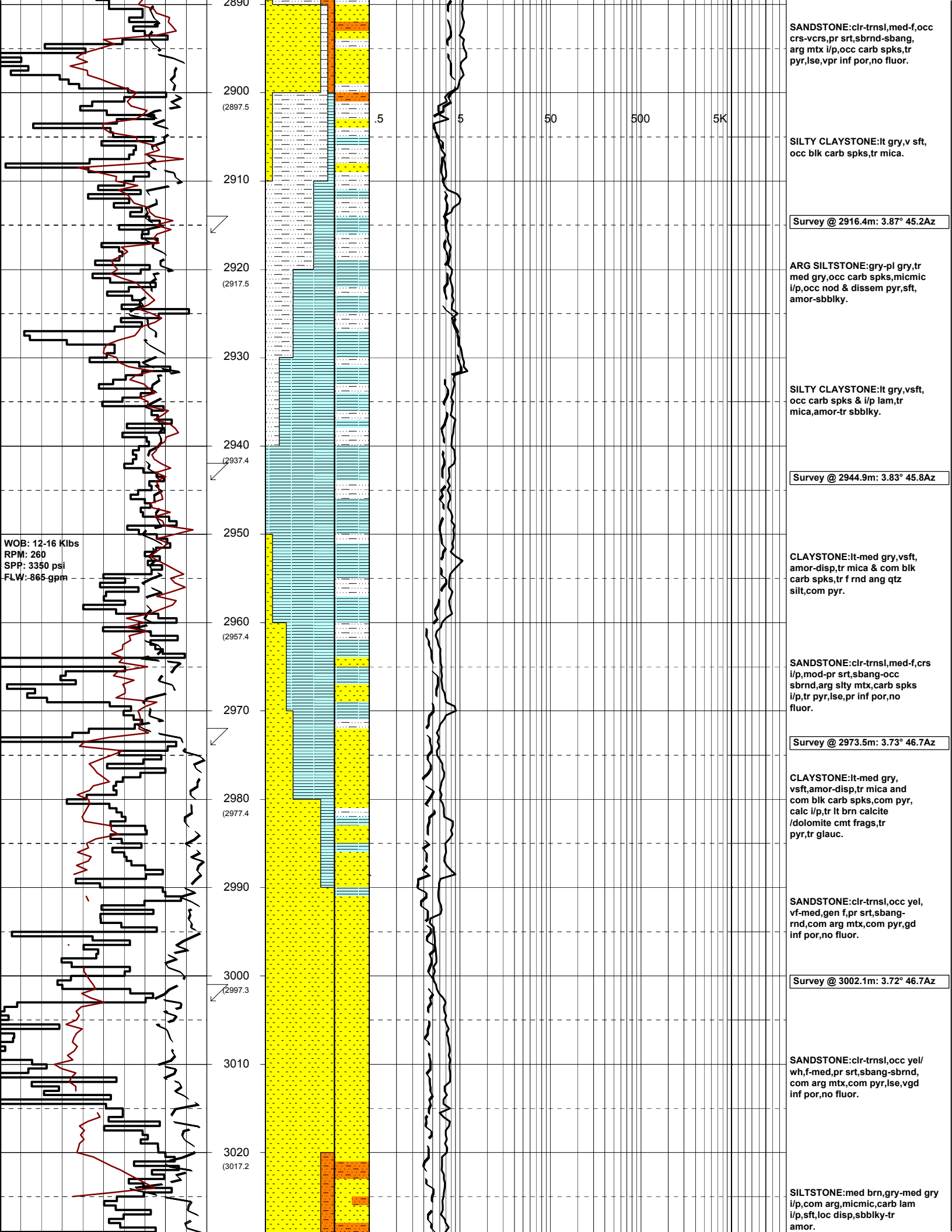
Survey @ 2859.1m: 3.95° 44.8Az

SILTSTONE:lt brn-brnish-gry,
sft-frm,occ v amor and red/
brn,gen massive-sbbiky,com
glauc grns,tr mica and blk
carb spks,tr pyr grad to vf
SST.

ARG SILTSTONE:pl gry-wh,med
gry i/p,micmic,carb spks &
tr carb lam i/p,sft-vsft,
occ dissep pyr,amor-sbbiky.

Survey @ 2887.7m: 3.86° 45.6Az

WOB: 10-17 Klbs
RPM: 260
SPP: 3500 psi
FLW: 900 gpm



SANDSTONE:clr-trnsl,med-f,occ crs-vcrs,pr srt,sbrnd-sbang, arg mtx i/p,occ carb spks,tr pyr,lse,vpr inf por,no fluor.

SILTY CLAYSTONE:lt gry,v sft, occ blk carb spks,tr mica.

Survey @ 2916.4m: 3.87° 45.2Az

ARG SILTSTONE:gry-pl gry,tr med gry,occ carb spks,micmic i/p,occ nod & dissem pyr,sft, amor-sbblky.

SILTY CLAYSTONE:lt gry,vsft, occ carb spks & i/p lam,tr mica,amor-tr sbblky.

Survey @ 2944.9m: 3.83° 45.8Az

CLAYSTONE:lt-med gry,vsft, amor-disp,tr mica & com blk carb spks,tr f rnd arg qtz silt,com pyr.

SANDSTONE:clr-trnsl,med-f,crs i/p,mod-pr srt,sbang-occ sbrnd,arg slty mtx,carb spks i/p,tr pyr,lse,pr inf por,no fluor.

Survey @ 2973.5m: 3.73° 46.7Az

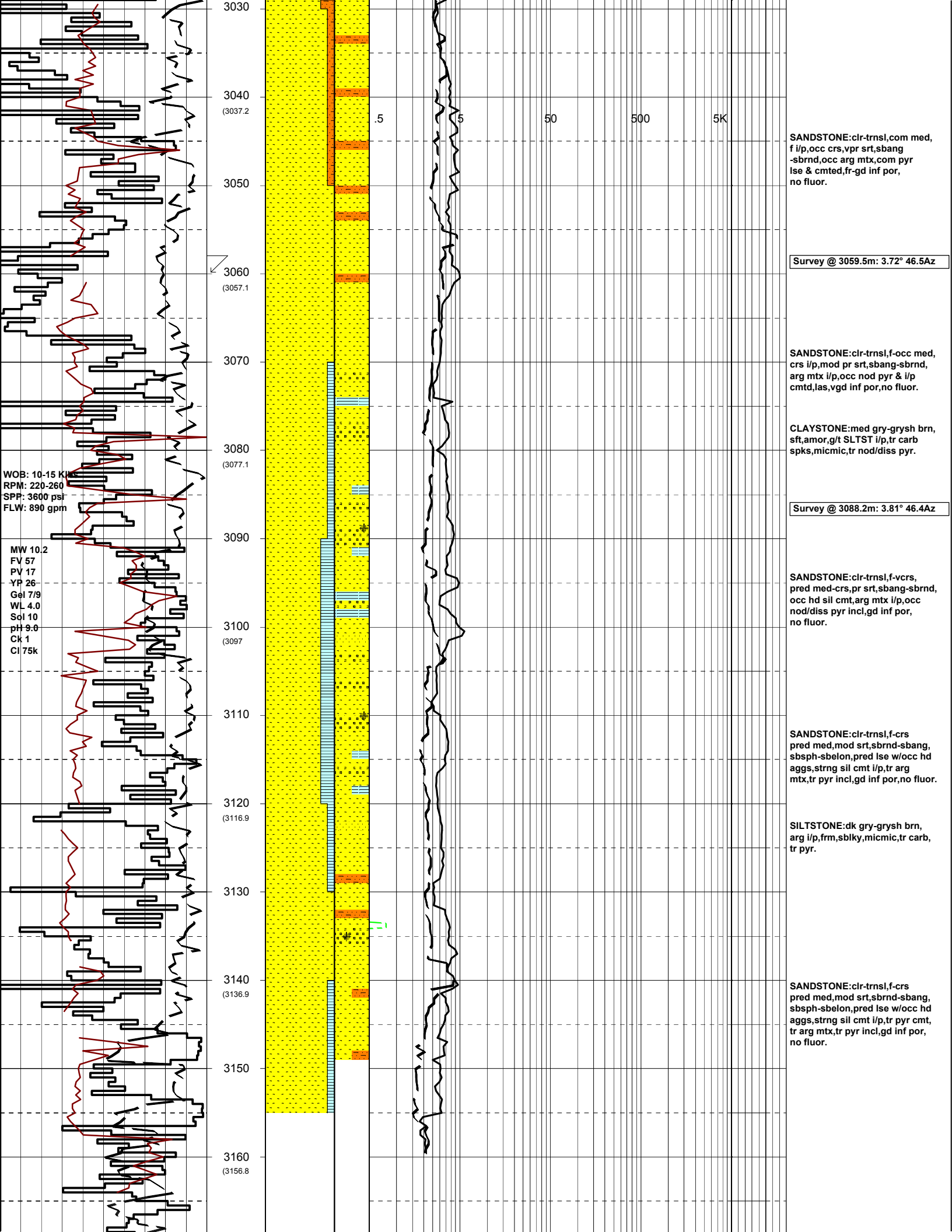
CLAYSTONE:lt-med gry, vsft,amor-disp,tr mica and com blk carb spks,com pyr, calc i/p,tr lt brn calcite /dolomite cmt frags,tr pyr,tr glauc.

SANDSTONE:clr-trnsl,occ yel, vf-med,gen f,pr srt,sbang-rnd,com arg mtx,com pyr,gd inf por,no fluor.

Survey @ 3002.1m: 3.72° 46.7Az

SANDSTONE:clr-trnsl,occ yel/ wh,f-med,pr srt,sbang-sbrnd, com arg mtx,com pyr,lse,vgd inf por,no fluor.

SILTSTONE:med brn,gry-med gry i/p,com arg,micmic,carb lam i/p,sft,loc disp,sbblky-tr amor.



3030
3040 (3037.2)
3050
3060 (3057.1)
3070
3080 (3077.1)
3090
3100 (3097)
3110
3120 (3116.9)
3130
3140 (3136.9)
3150
3160 (3156.8)

.5 5 50 500 5K

SANDSTONE:clr-trnsl,com med,
f i/p,occ crs,vpr srt,sbang
-sbrnd,occ arg mtx,com pyr
lse & cmted,fr-gd inf por,
no fluor.

Survey @ 3059.5m: 3.72° 46.5Az

SANDSTONE:clr-trnsl,f-occ med,
crs i/p,mod pr srt,sbang-sbrnd,
arg mtx i/p,occ nod pyr & i/p
cmted,las,vgd inf por,no fluor.

CLAYSTONE:med gry-grysh brn,
sft,amor,g/t SLTST i/p,tr carb
spks,micmic,tr nod/diss pyr.

Survey @ 3088.2m: 3.81° 46.4Az

SANDSTONE:clr-trnsl,f-vcrs,
pred med-crs,pr srt,sbang-sbrnd,
occ hd sil cmt,arg mtx i/p,occ
nod/diss pyr incl,gd inf por,
no fluor.

SANDSTONE:clr-trnsl,f-crs
pred med,mod srt,sbrnd-sbang,
sbsph-sbelon,pred lse w/occ hd
aggs,strng sil cmt i/p,tr arg
mtx,tr pyr incl,gd inf por,no fluor.

SILTSTONE:dk gry-grysh brn,
arg i/p,frm,sblky,micmic,tr carb,
tr pyr.

SANDSTONE:clr-trnsl,f-crs
pred med,mod srt,sbrnd-sbang,
sbsph-sbelon,pred lse w/occ hd
aggs,strng sil cmt i/p,tr pyr cmt,
tr arg mtx,tr pyr incl,gd inf por,
no fluor.

WOB: 10-15 K
RPM: 220-260
SPP: 3600 psr
FLW: 890 gpm

MW 10.2
FV 57
PV 17
YP 26
Gel 7/9
WL 4.0
Sol 10
pH 9.0
Ck 1
Cl 75k

