

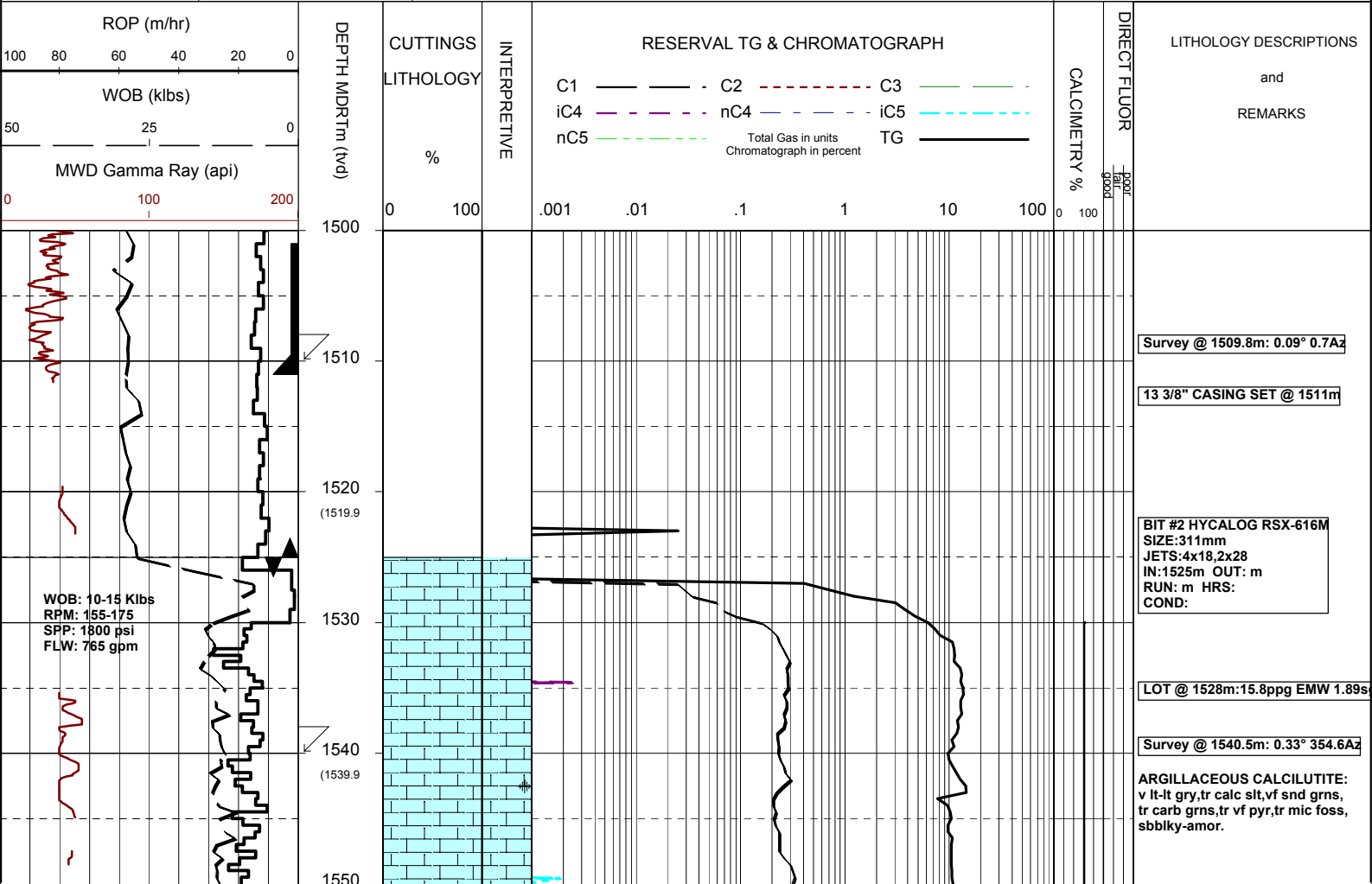


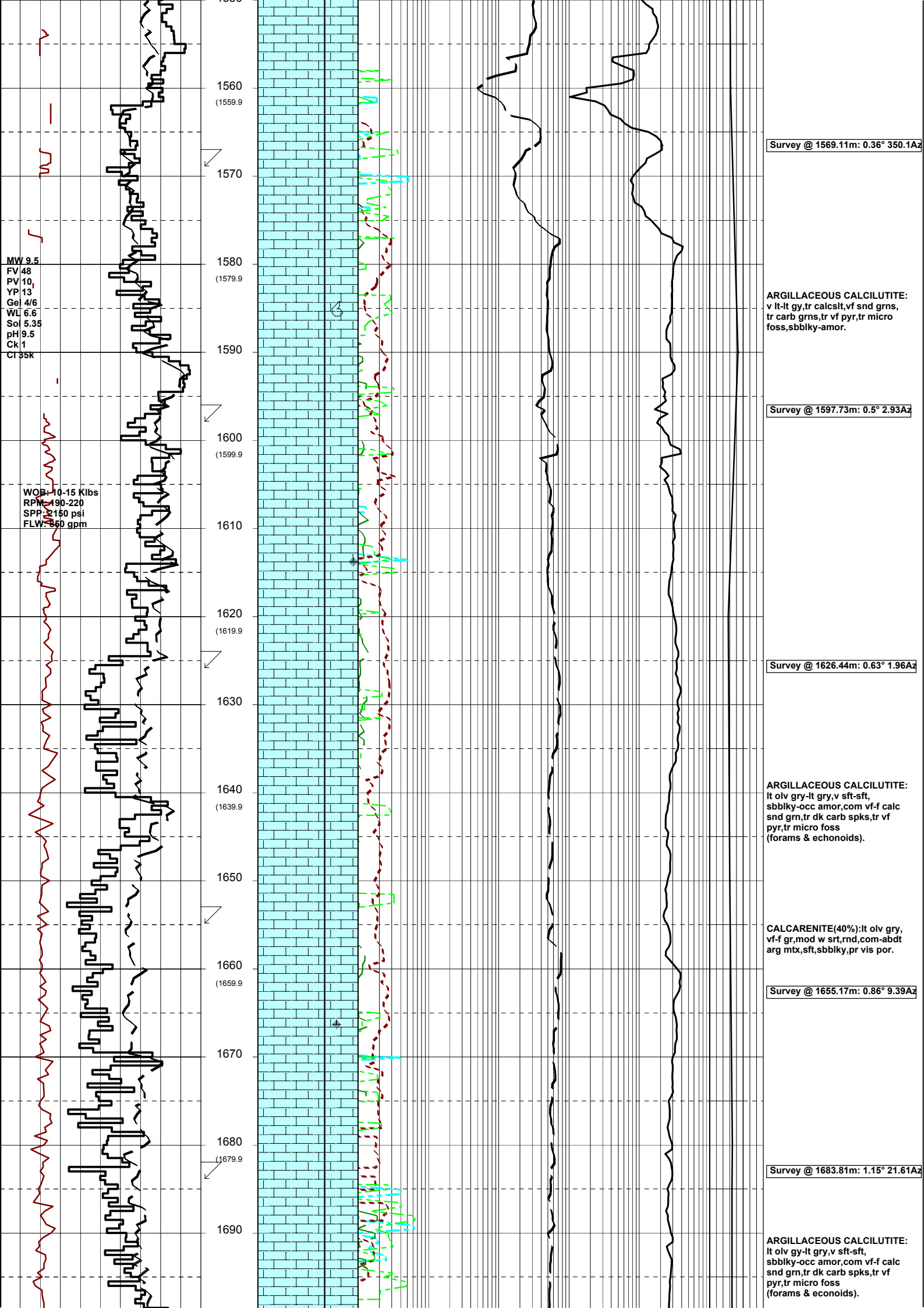
MASTERLOG CULVERIN-1



GENERAL	POSITION	HOLE / CASING INFO	DATE / DEPTH	ENGINEERS
Country : AUSTRALIA	Latitude : 38°24'08.14"S	914mm (36") hole to mMDRT: 650.0m	Spud Date : 16-12-05	D.ADDERLEY
Permit : VIC/P-56	Longitude : 148°39'14.92"E	445mm (17 1/2") hole to mMDRT: 1525m	Total Depth Date : xx-xx-05	T.PLATT
Field : GIPPSLAND	UTM Co-ord X (m E):644 440	311mm (12 1/4") hole to mMDRT: m	Total Depth (mMDRT): m	A.DUNN
Basin : GIPPSLAND	UTM Co-ord Y (m N):5 748 250	762mm (30") Cond. to mMDRT: 650m	True Vertical Depth (mTVDSS): m	S.PROSSER
Well Type : EXPLORATION	RT to MSL (m): 22	340mm (13 3/8") Csg to mMDRT: 1511m	Log Scale : 1/ 500	
Rig Name : OCEAN PATRIOT	RT to Sea Bed (m): 607		Final Status :	

ABBREVIATIONS		LITHOLOGY LEGEND				ENGINEERING LEGEND	
MW Mud Weight	WOB Weight on Bit (klbs)	Claystone	Marl	Lithic Fragment	Cement	Shoe	
FV Funnel Viscosity	RPM Rotations Per Min	Siltstone	Clay, Limestone	Foraminifera	Glauconite	Deviation survey ← RFT	
PV Plastic Viscosity	FLW Flow Rate (gpm)	Shale	Limestone	Fossils	Pyrite	DST ← FIT	
YP Yield Point	SPP Pump Pressure (psi)	Fine SST	Dolomite	Bryozoa	Iron Minerals	TEST	Mud loss
Gel Gel Strength	RR Re-Run Bit	Medium SST	Coal	Sponges	Mica	Sidewall Core	Mud gain
WL Water Loss	TG Trip Gas	Coarse SST	Volcanics	Brachiopoda	Carb Fragments	Core	
KCI Potassium Chloride	CG Connection Gas						
CI Chlorides	BG Background Gas						
Incl Inclination	DGP Drilled Gas Peak						
Az Azimuth	MM Mud Motor						





Survey @ 1569.11m: 0.36° 350.1Az

ARGILLACEOUS CALCILUTITE:
v lt-lt gy, tr calcst, vf snd grns,
tr carb grns, tr vf pyr, tr micro
foss, sbbiky-amor.

Survey @ 1597.73m: 0.5° 2.93Az

Survey @ 1626.44m: 0.63° 1.96Az

ARGILLACEOUS CALCILUTITE:
lt olv gry-lt gry, v sft-sft,
sbbiky-occ amor, com vf-f calc
snd gm, tr dk carb spks, tr vf
pyr, tr micro foss
(forams & echonoids).

CALCARENITE(40%):lt olv gry,
vf-f gr, mod w srt, rnd, com-abdt
arg mtx, sft, sbbiky, pr vis por.

Survey @ 1655.17m: 0.86° 9.39Az

Survey @ 1683.81m: 1.15° 21.61Az

ARGILLACEOUS CALCILUTITE:
lt olv gy-lt gry, v sft-sft,
sbbiky-occ amor, com vf-f calc
snd gm, tr dk carb spks, tr vf
pyr, tr micro foss
(forams & econoids).

WOB: 10-15 Klbs
RPM: 210-225
SPP: 2500 psi
FLW: 890 gpm

MW 9.5
FV 50
PV 10
YP 14
Ge 4/5
WL 6.2
Sol 6
pH 9.5
Ck 1
Cl 35k

WOB: 10-15 Klbs
RPM: 220-235
SPP: 2500 psi
FLW: 890 gpm

1700 (1699.9)
1710
1720 (1719.9)
1730
1740 (1739.9)
1750
1760 (1759.8)
1770
1780 (1779.8)
1790
1800 (1799.8)
1810
1820 (1819.8)
1830
1840 (1839.8)

Survey @ 1712.56m: 1.54° 24.62Az

Survey @ 1741.12m: 1.85° 23.41Az

CALCARENITE(40%):lt olv gry, vf-f gr,mod w srt,rd,com-abdt arg mtb,sft,sbbly,pr vis por.

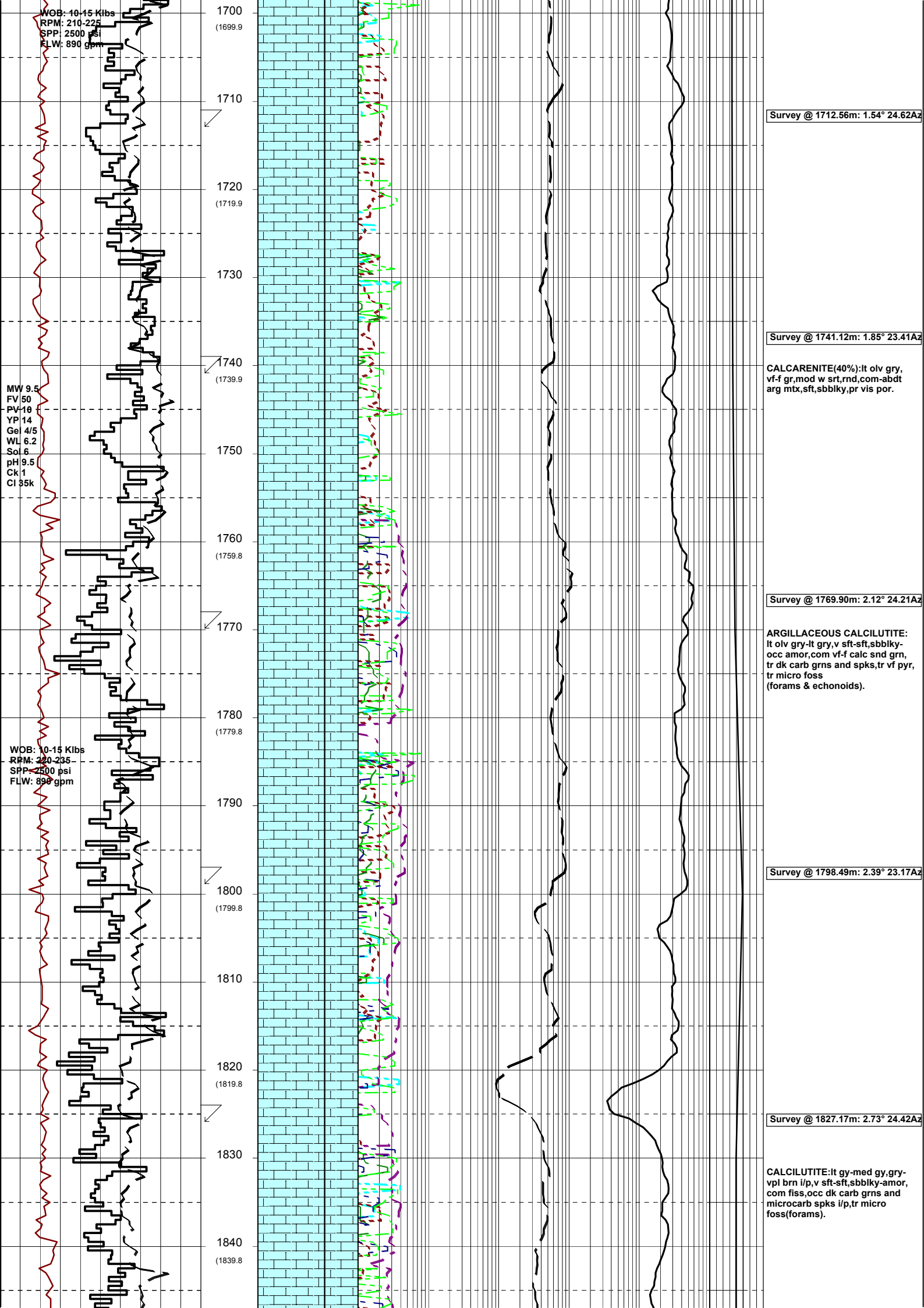
Survey @ 1769.90m: 2.12° 24.21Az

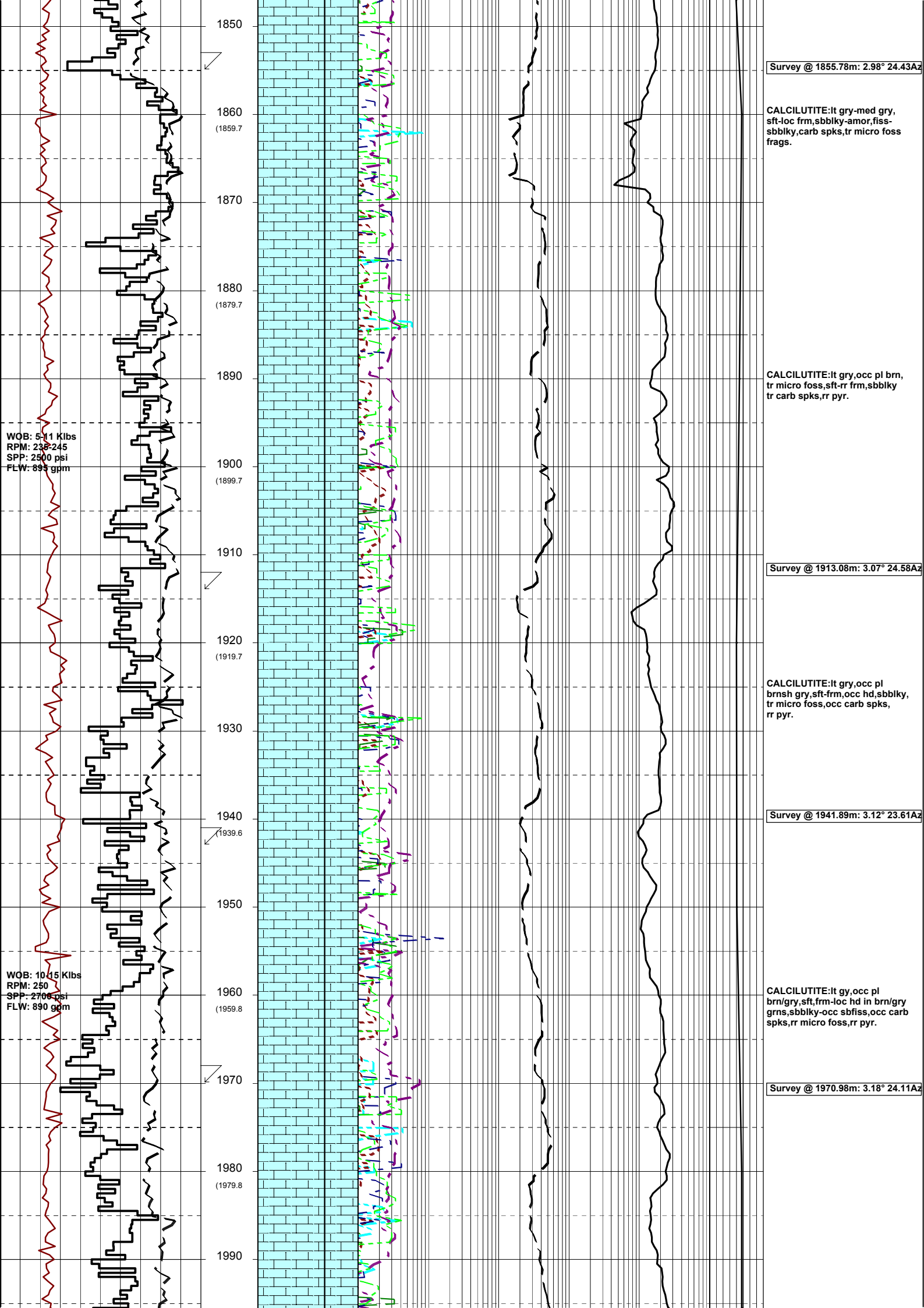
ARGILLACEOUS CALCILUTITE: lt olv gry-lt gry,v sft-sft,sbbly-occ amor,com vf-f calc snd grn, tr dk carb grns and spks,tr vf pyr, tr micro foss (forams & echnoids).

Survey @ 1798.49m: 2.39° 23.17Az

Survey @ 1827.17m: 2.73° 24.42Az

CALCILUTITE:lt gy-med gy,gry-vpl brn i/p,v sft-sft,sbbly-amor, com fiss,occ dk carb grns and microcarb spks i/p,tr micro foss(forams).





Survey @ 1855.78m: 2.98° 24.43Az

CALCILUTITE:lt gry-med gry, sft-loc frm,sbbiky-amor,fiss-sbbiky,carb spks,tr micro foss frags.

CALCILUTITE:lt gry,occ pl brn, tr micro foss,sft-rr frm,sbbiky tr carb spks,rr pyr.

Survey @ 1913.08m: 3.07° 24.58Az

CALCILUTITE:lt gry,occ pl brnsh gry,sft-frm,occ hd,sbbiky, tr micro foss,occ carb spks, rr pyr.

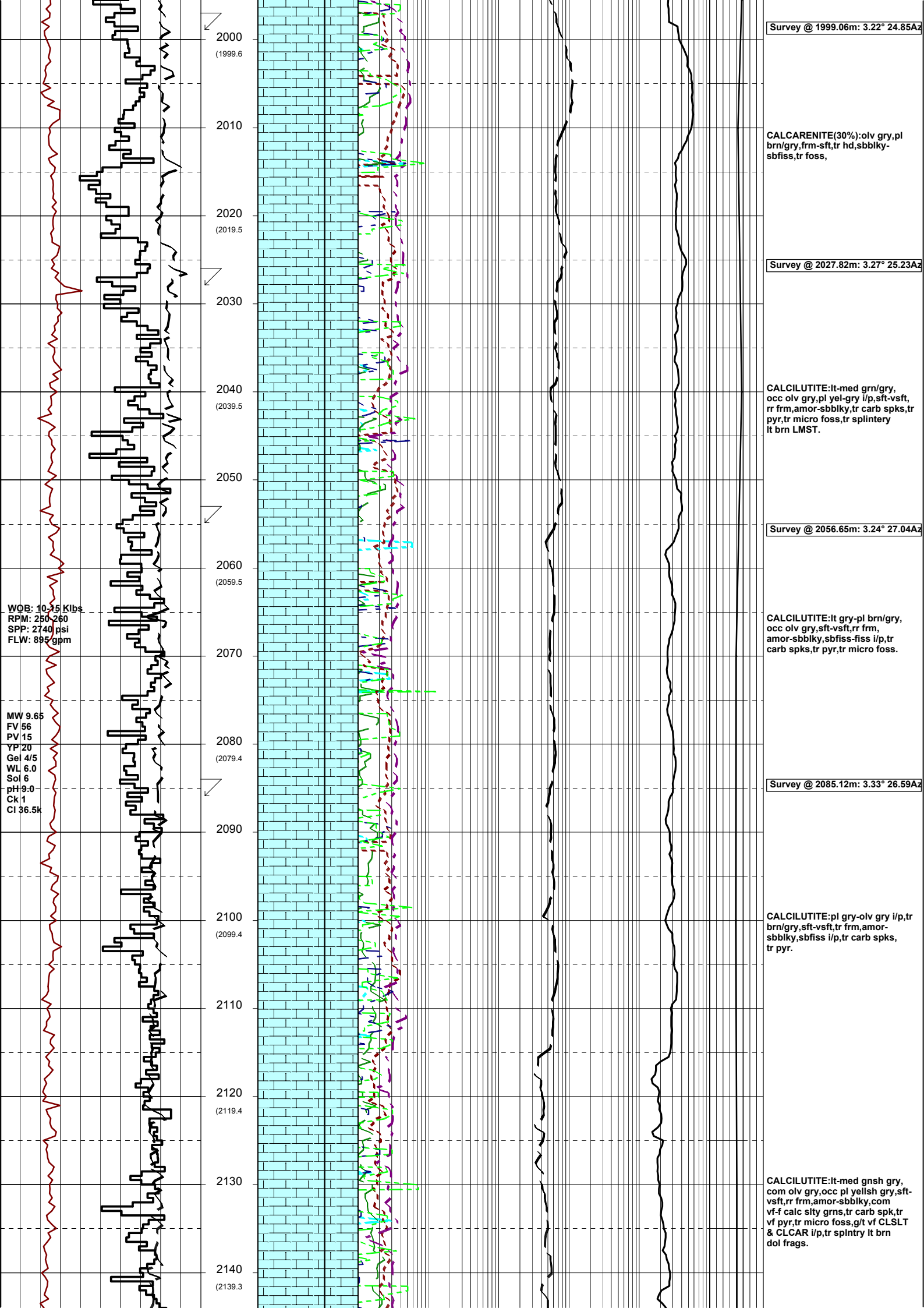
Survey @ 1941.89m: 3.12° 23.61Az

CALCILUTITE:lt gy,occ pl brn/gry,sft,frm-loc hd in brn/gry grns,sbbiky-occ sbfiss,occ carb spks,rr micro foss,rr pyr.

Survey @ 1970.98m: 3.18° 24.11Az

WOB: 5-11 Klbs
RPM: 238-245
SPP: 2500 psi
FLW: 898 gpm

WOB: 10-15 Klbs
RPM: 250
SPP: 2700 psi
FLW: 890 gpm



Survey @ 1999.06m: 3.22° 24.85Az

CALCARENITE(30%):olv gry,pl
brn/gry,frm-sft,tr hd,sbblky-
sbfiss,tr foss,

Survey @ 2027.82m: 3.27° 25.23Az

CALCILUTITE:lt-med grn/gry,
occ olv gry,pl yel-gry i/p,sft-vsft,
rr frm,amor-sbblky,tr carb spks,tr
pyr,tr micro foss,tr splintery
lt brn LMST.

Survey @ 2056.65m: 3.24° 27.04Az

CALCILUTITE:lt gry-pl brn/gry,
occ olv gry,sft-vsft,rr frm,
amor-sbblky,sbfiss-fiss i/p,tr
carb spks,tr pyr,tr micro foss.

Survey @ 2085.12m: 3.33° 26.59Az

CALCILUTITE:pl gry-olv gry i/p,tr
brn/gry,sft-vsft,tr frm,amor-
sbblky,sbfiss i/p,tr carb spks,
tr pyr.

CALCILUTITE:lt-med gnsh gry,
com olv gry,occ pl yellsh gry,sft-
vsft,rr frm,amor-sbblky,com
vf-f calc slty grns,tr carb spk,tr
vf pyr,tr micro foss,g/t vf CLSLT
& CLCAR i/p,tr splntry lt brn
dol frags.

WOB: 10.15 Klbs
RPM: 250-260
SPP: 2740 psi
FLW: 895 gpm

MW 9.65
FV 56
PV 15
YP 20
Gel 4/5
WL 6.0
Sol 6
pH 9.0
Ck 1
Cl 36.5k

2000 (1999.6)
2010
2020 (2019.5)
2030
2040 (2039.5)
2050
2060 (2059.5)
2070
2080 (2079.4)
2090
2100 (2099.4)
2110
2120 (2119.4)
2130
2140 (2139.3)

WOB: 10-15 Klbs
RPM: 250-260
SPP: 2790 psi
FLW: 895 gpm

2150
2160
(2159.3)
2170
2180
(2179.2)
2190
2200
(2199.2)
2210
2220
(2219.2)
2230
2240
(2239.1)

