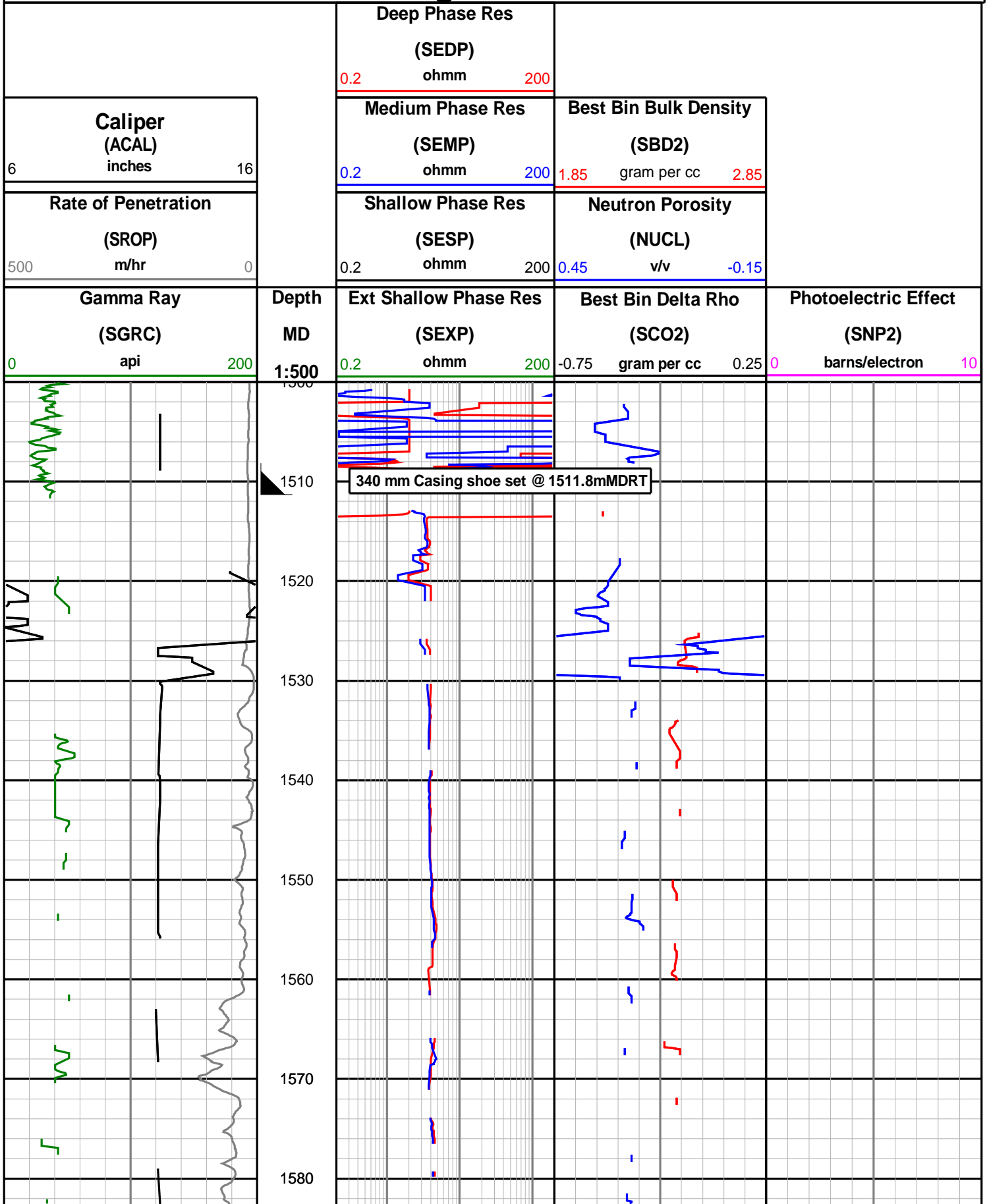
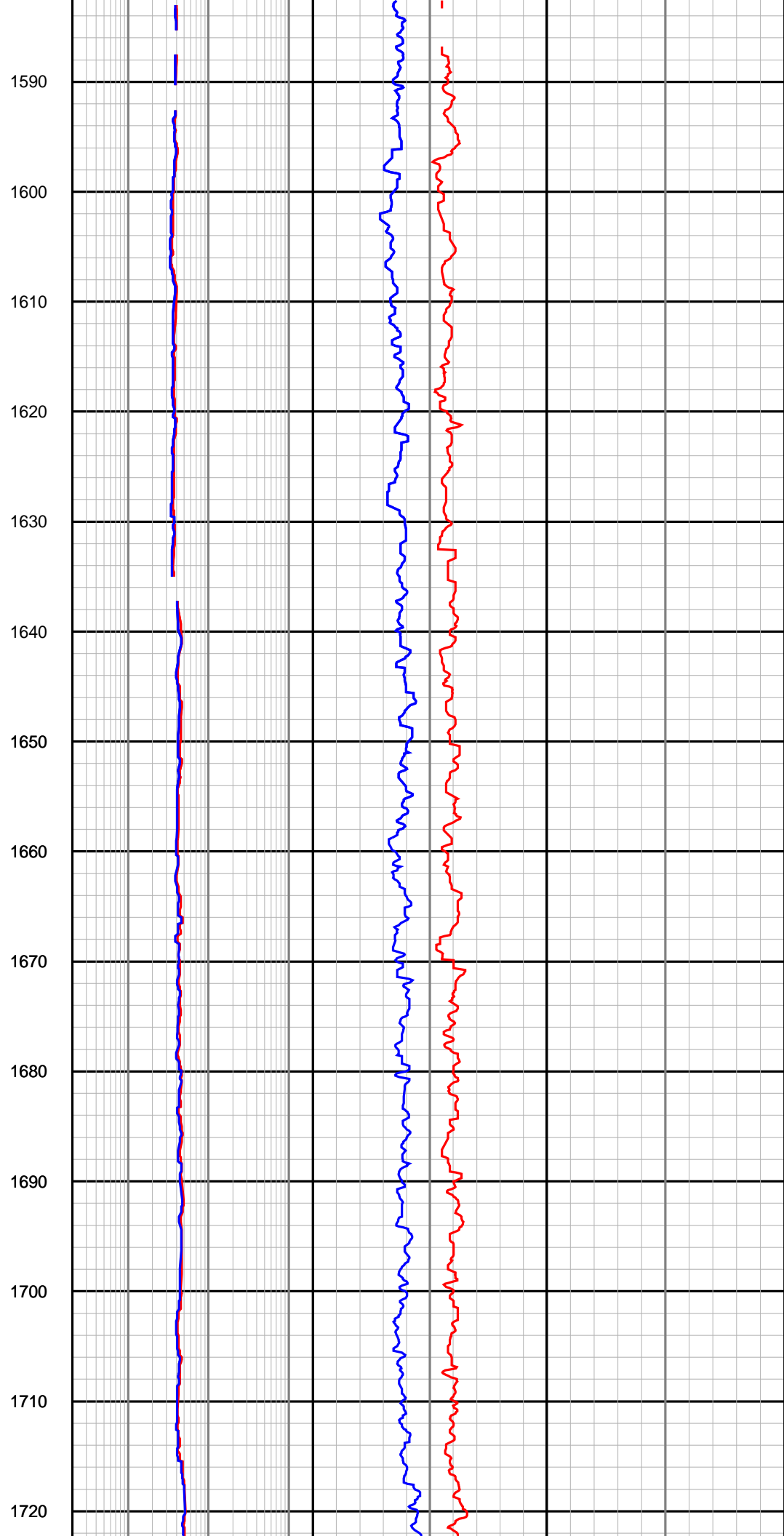
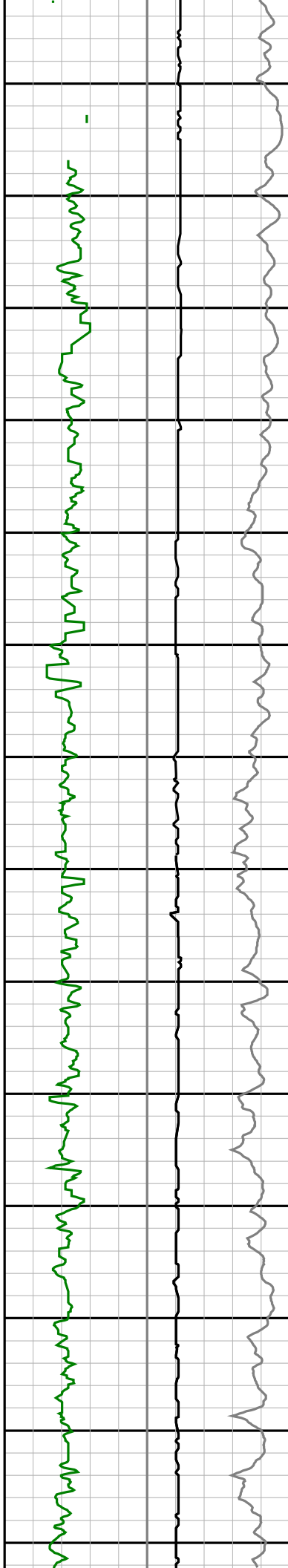


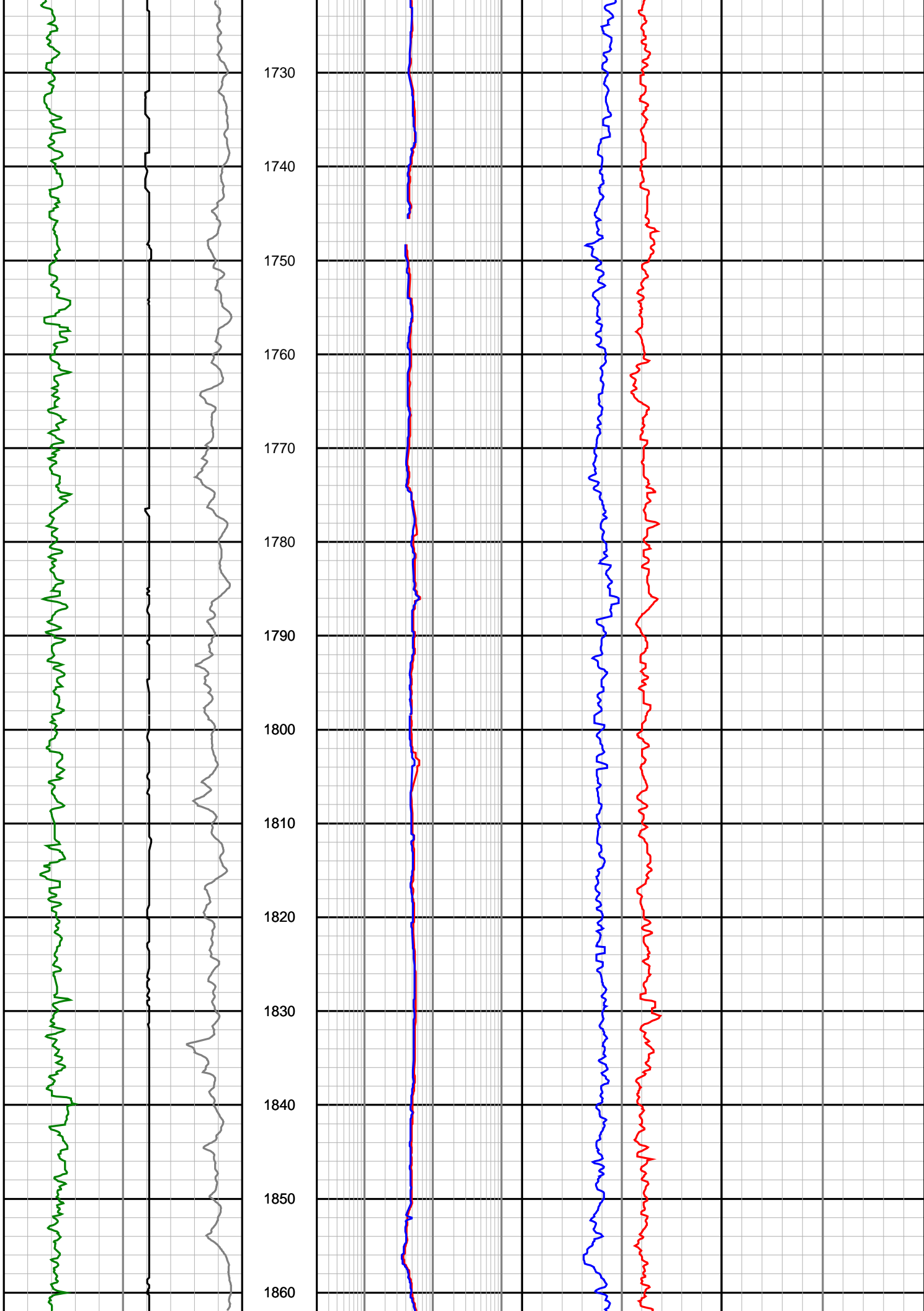
Nexus Energy Ltd

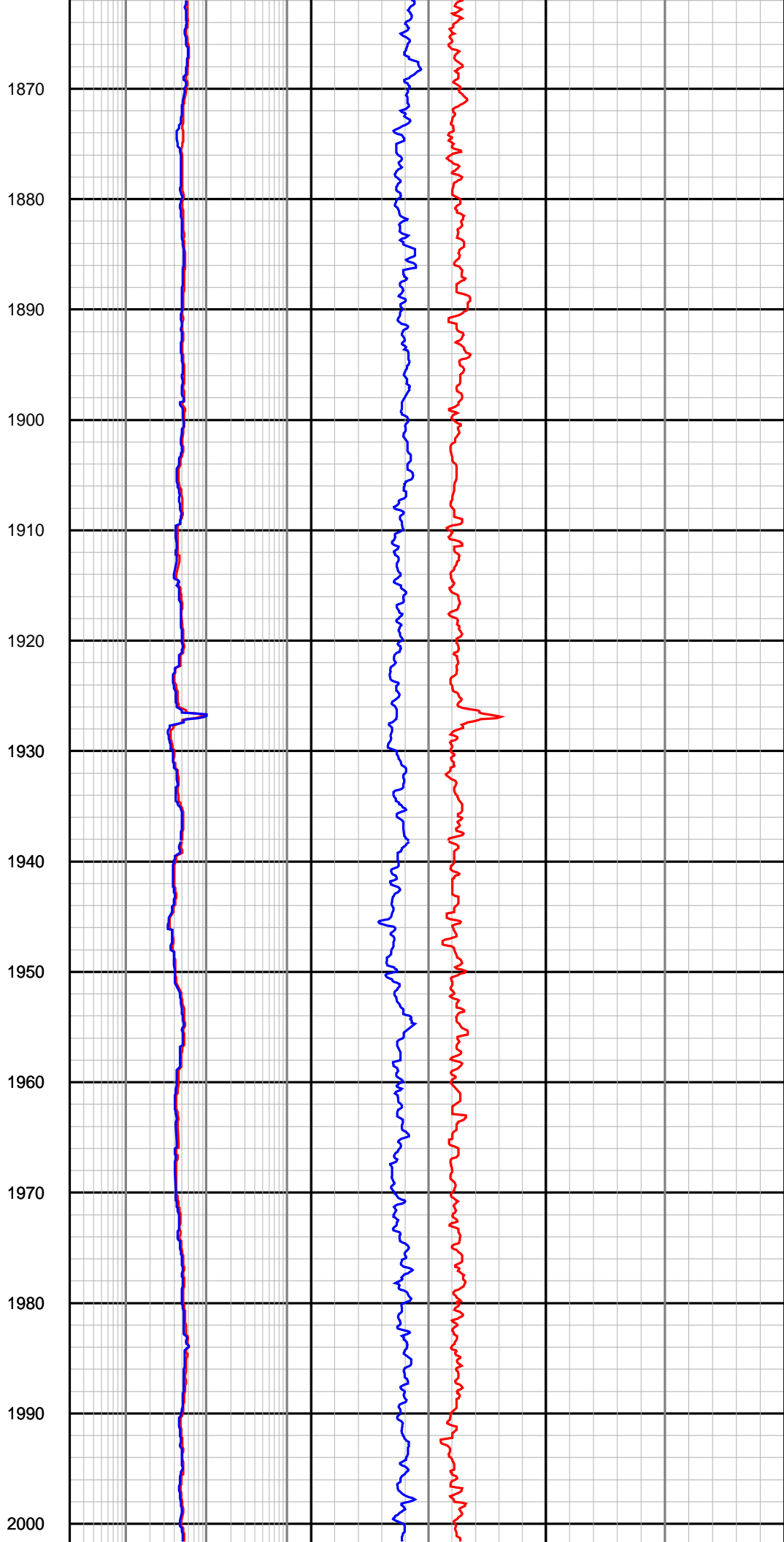
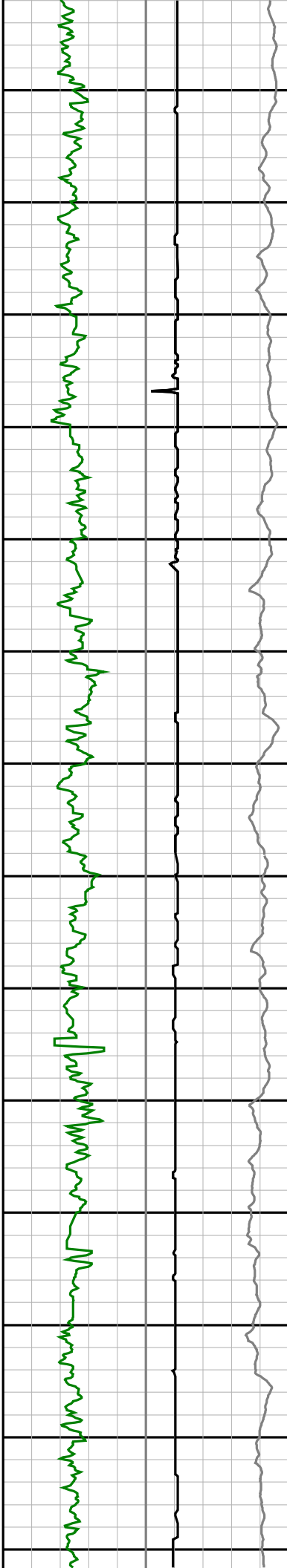
Culverin-1

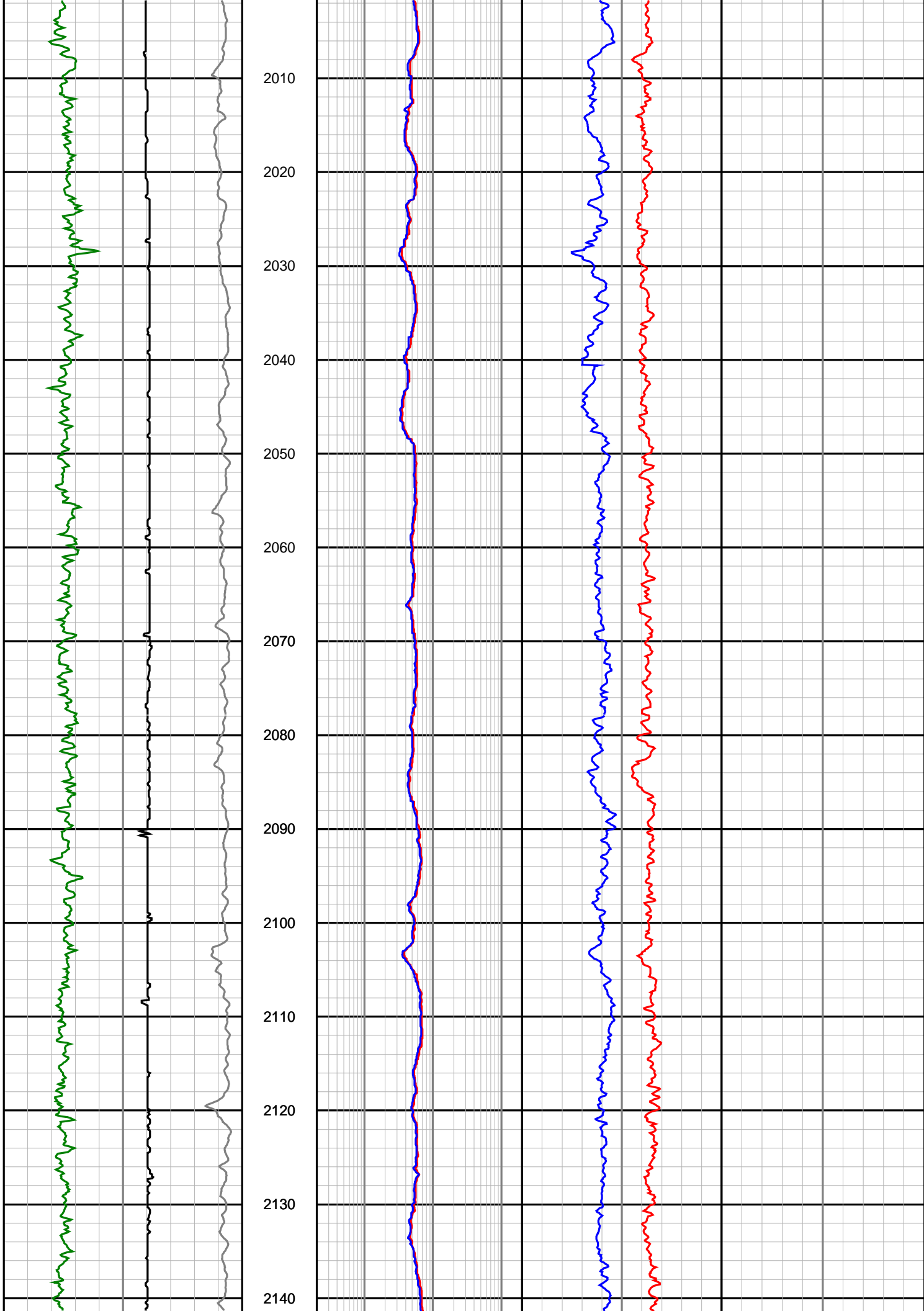
Realtime LWD Log - 12 1/4" Hole Section

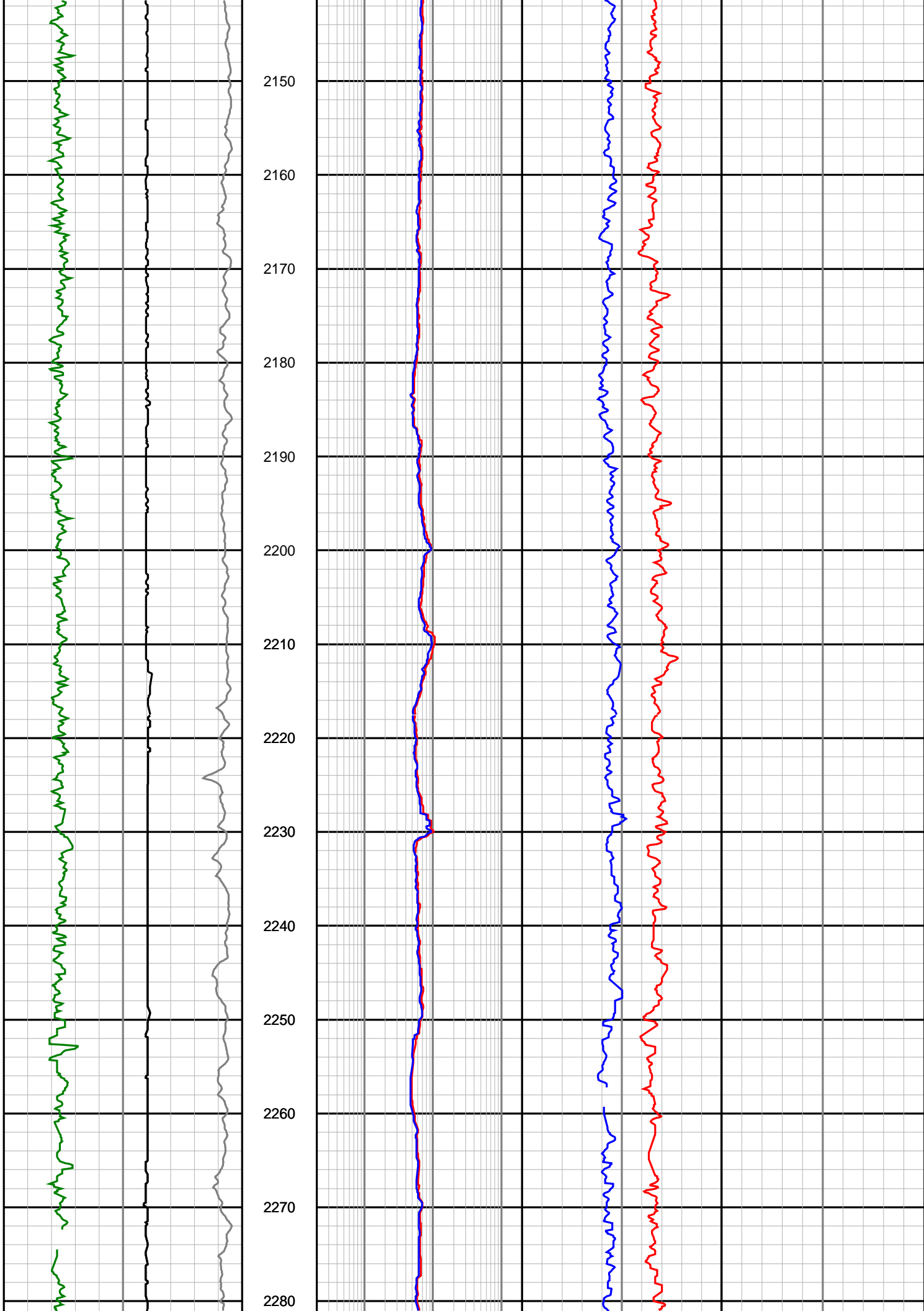


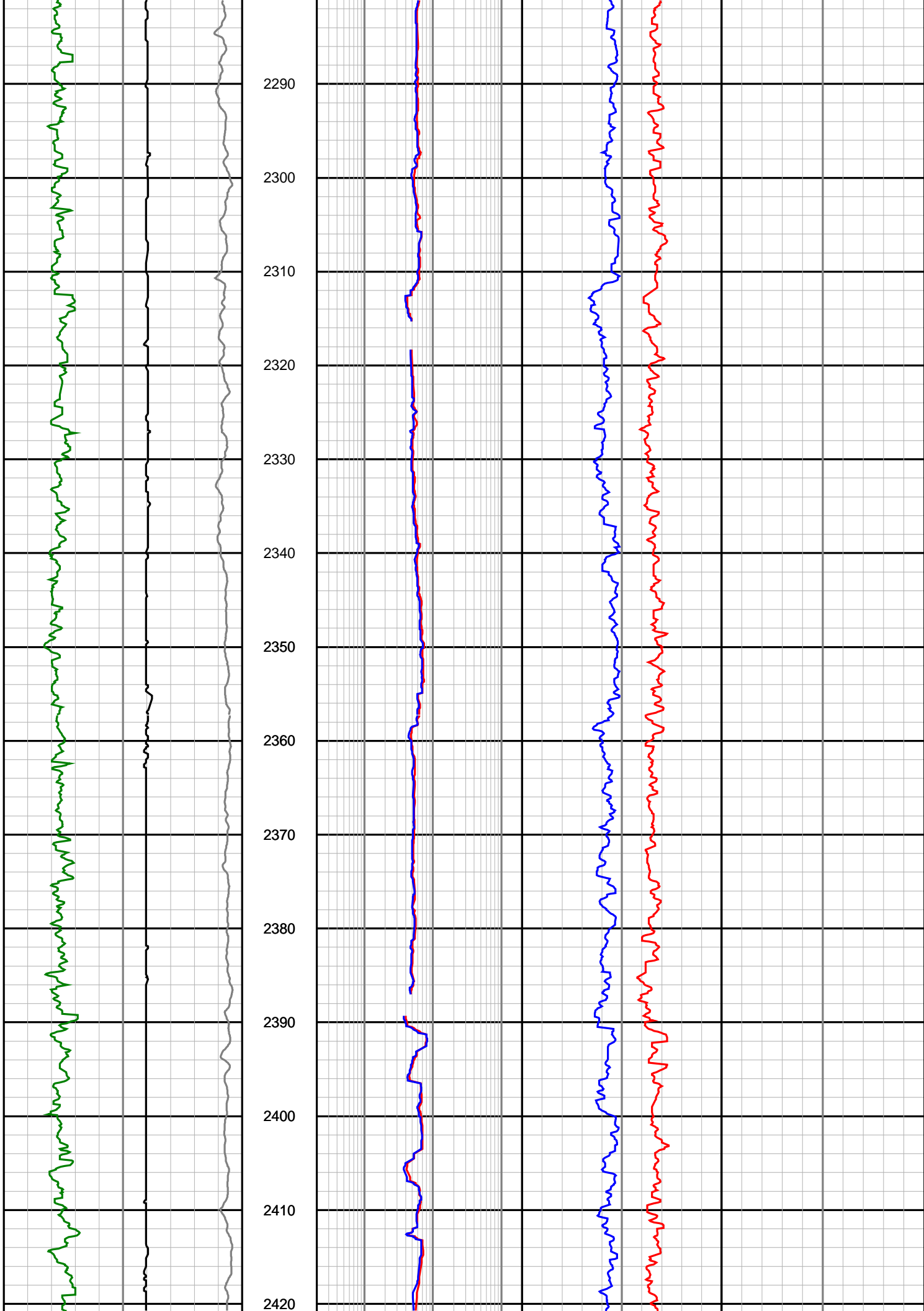


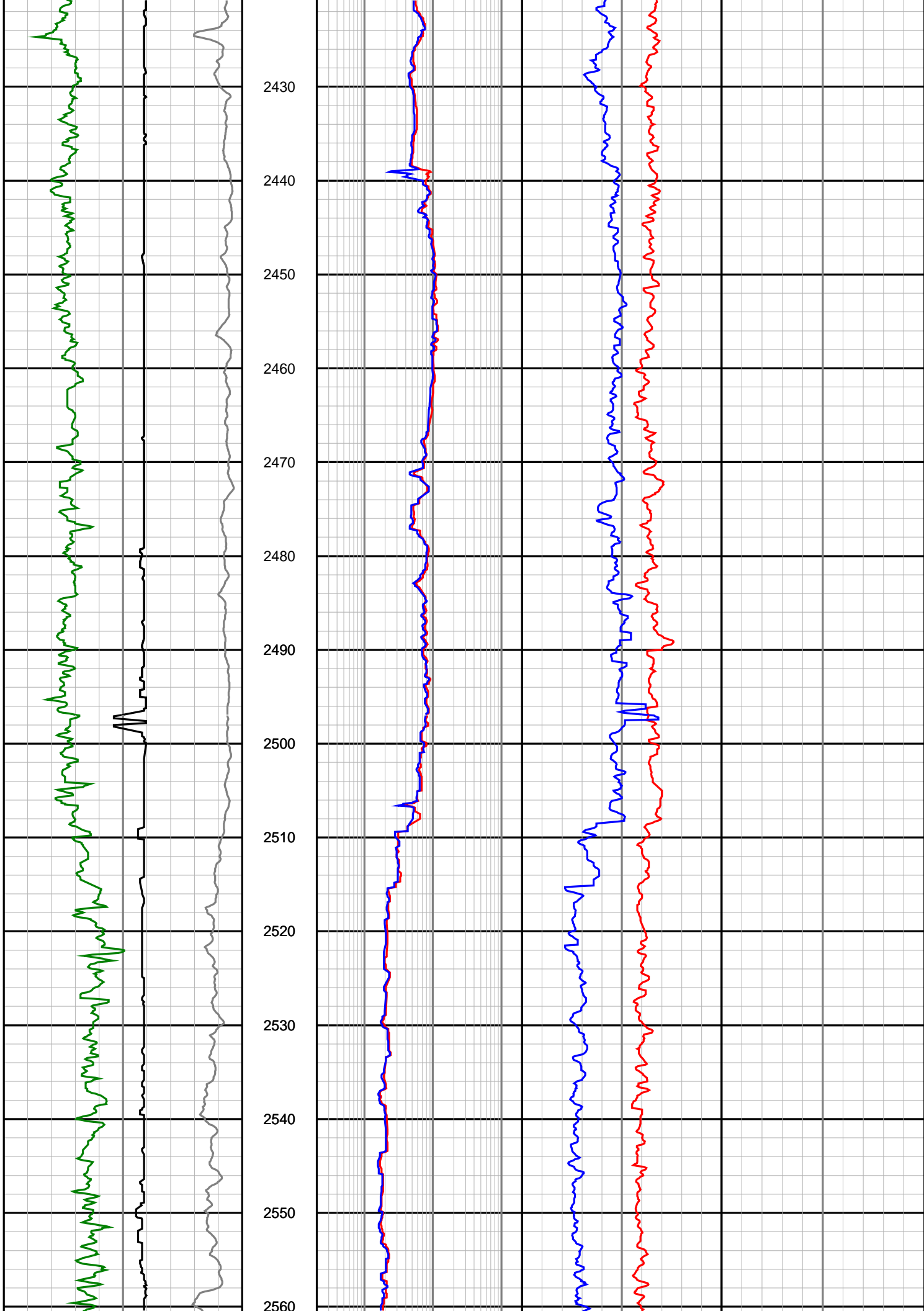


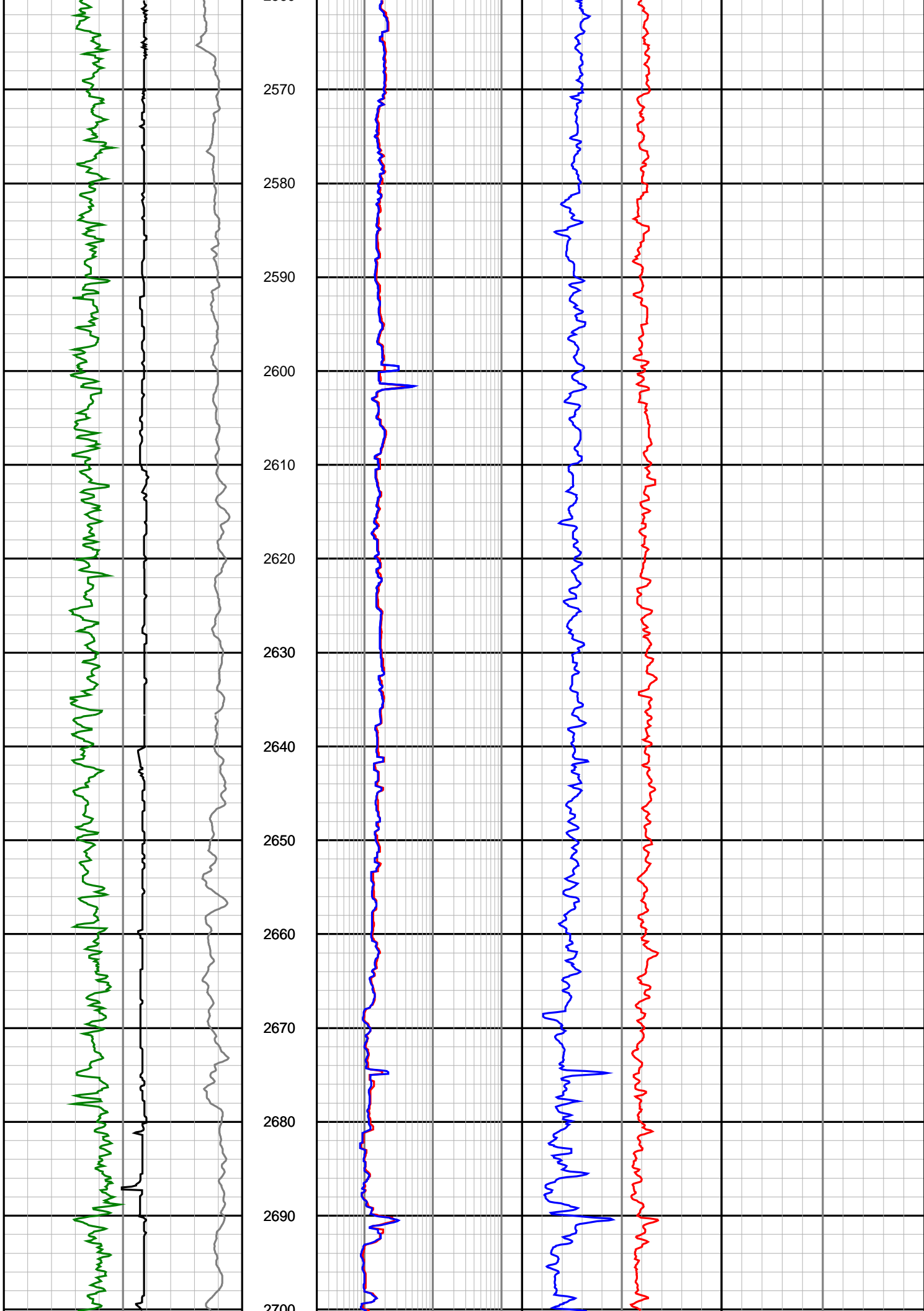


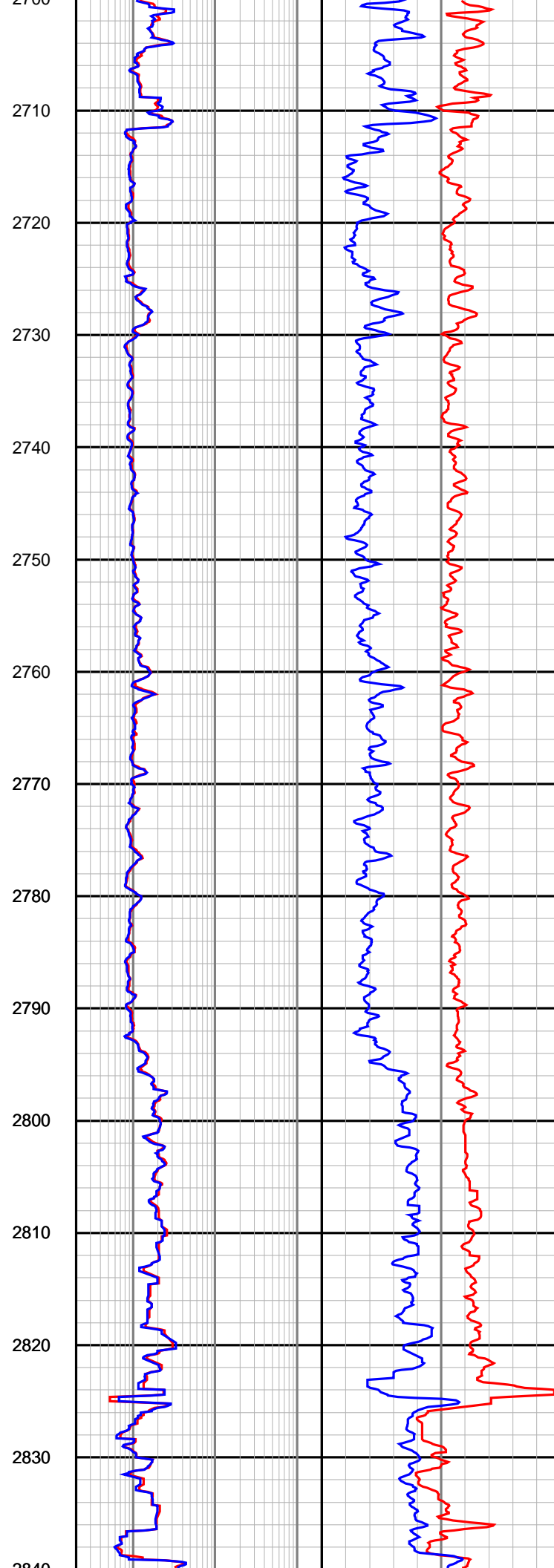
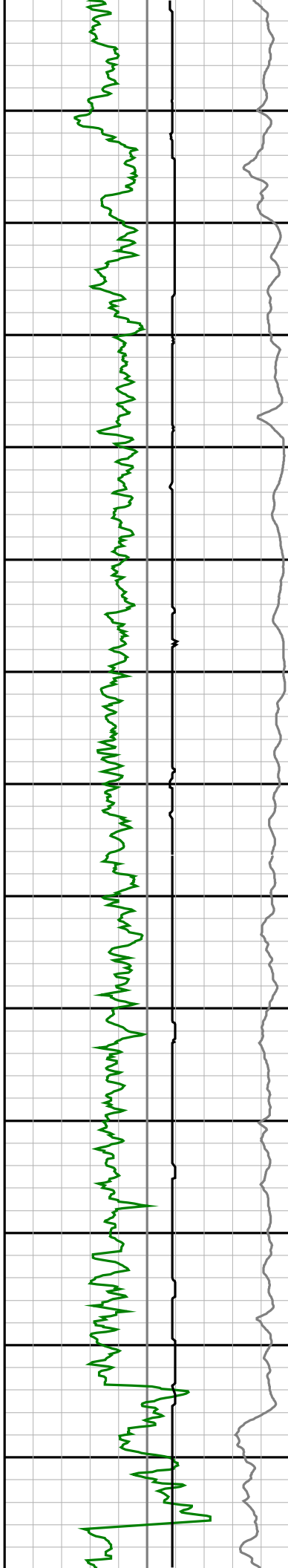


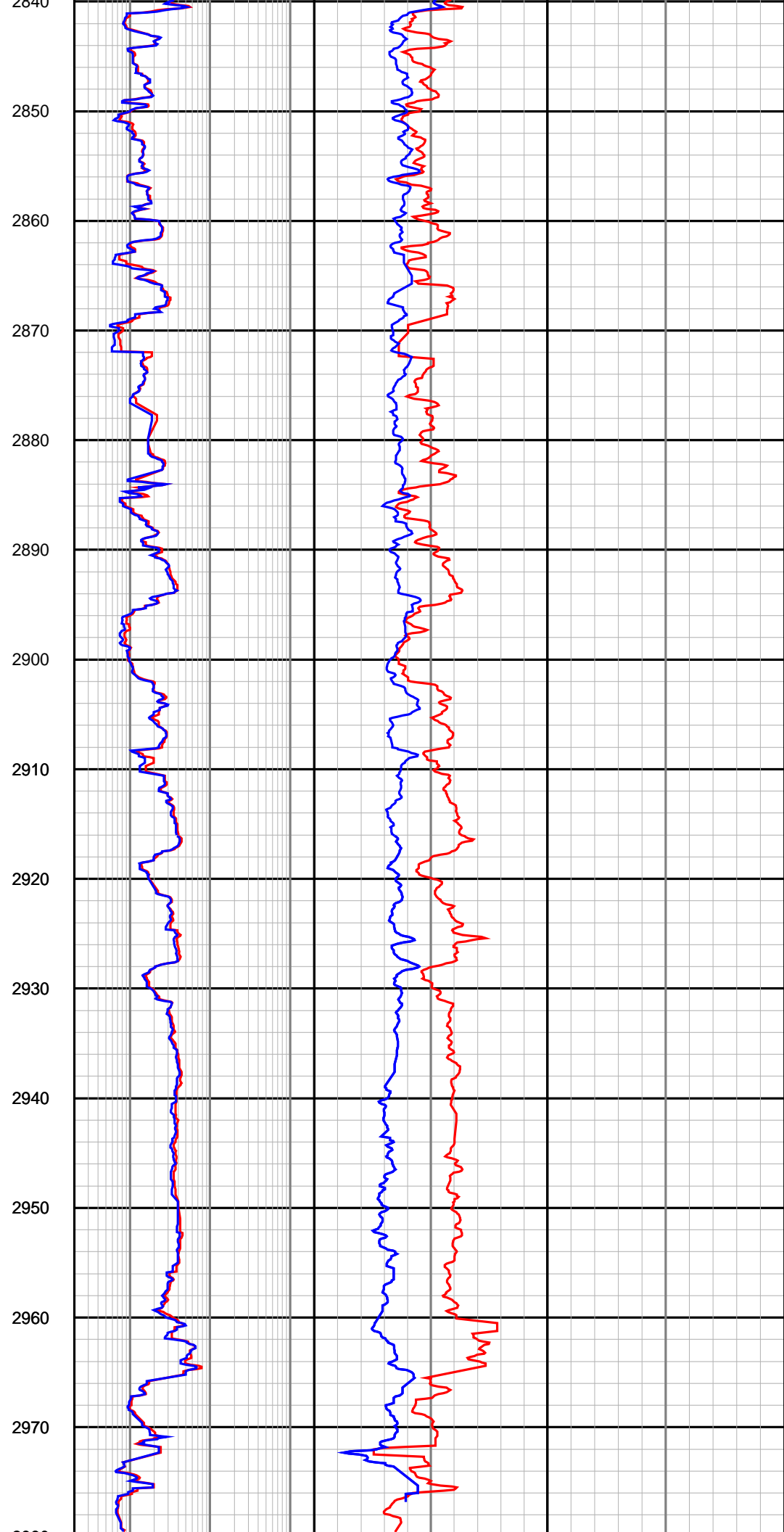
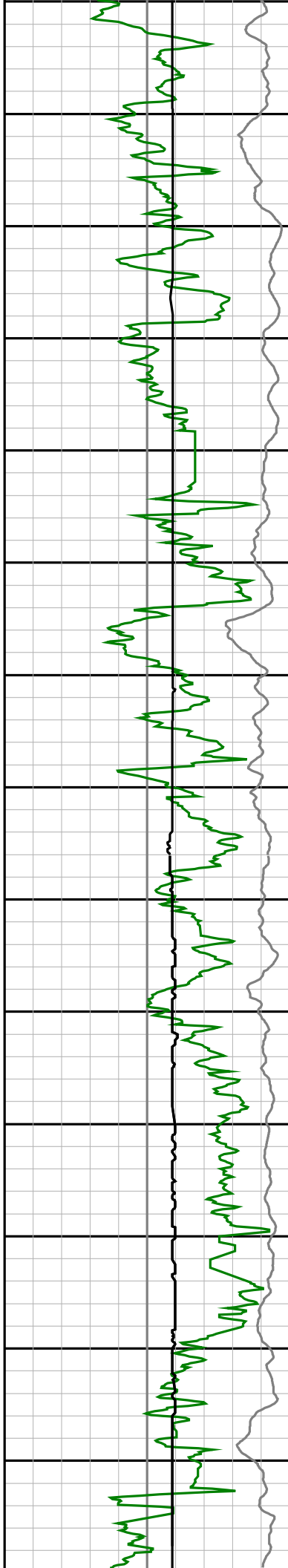


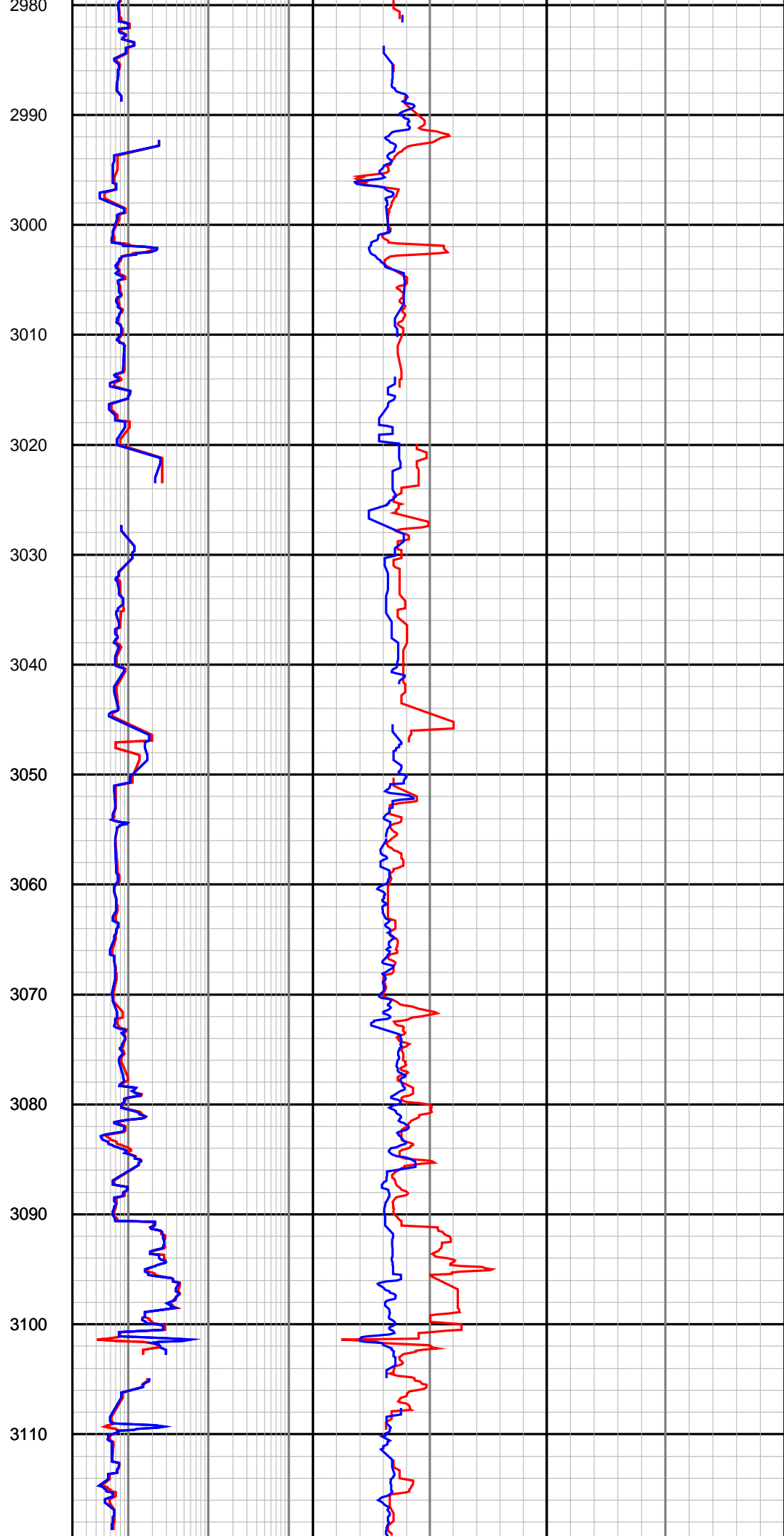
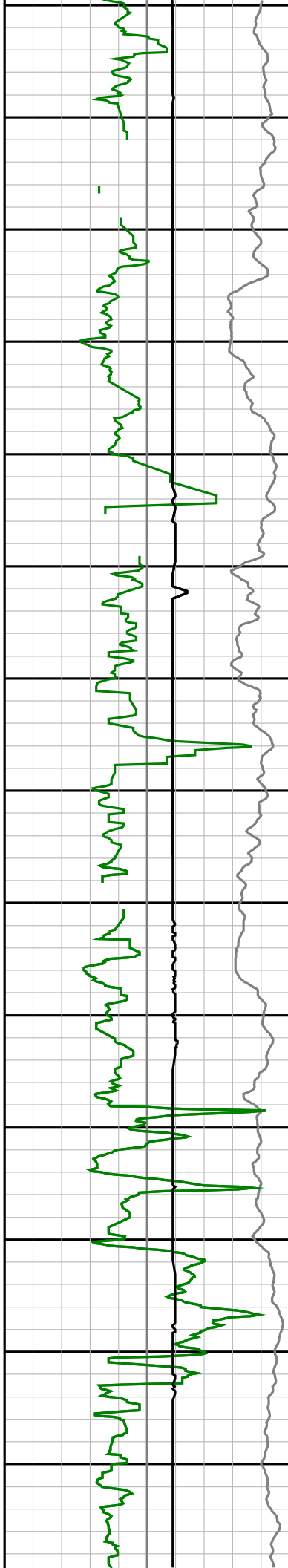


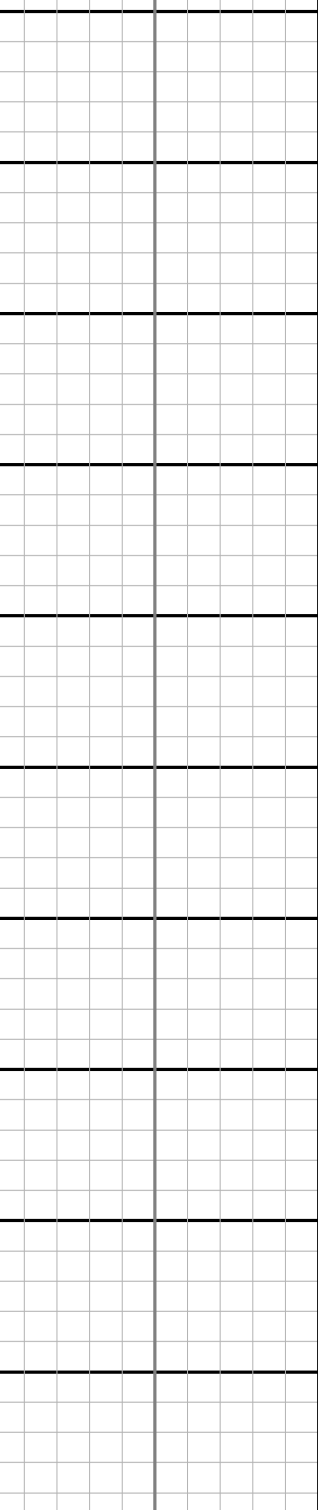
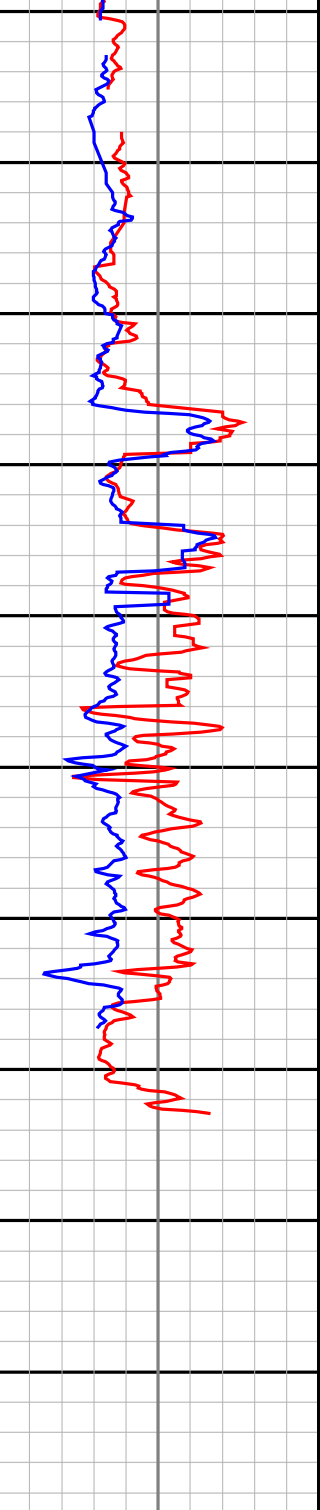
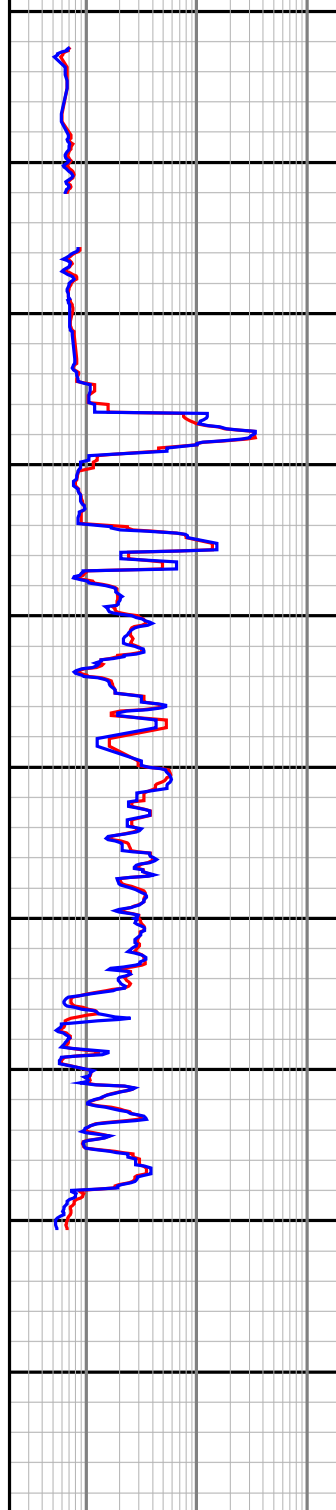
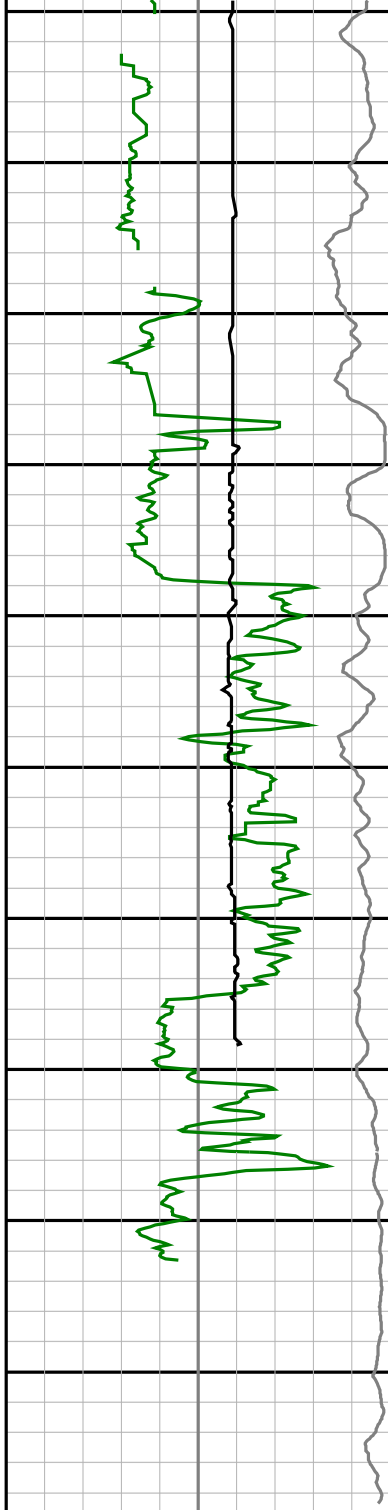












Gamma Ray (SGRC) 0 api 200
Rate of Penetration (SROP) 500 m/hr 0
Caliper (ACAL) 6 inches 16

Depth MD 1:500

Ext Shallow Phase Res (SEXP) 0.2 ohmm 200
Shallow Phase Res (SESP) 0.2 ohmm 200
Medium Phase Res (SEMP) 0.2 ohmm 200
Deep Phase Res (SEDP) 0.2 ohmm 200

Best Bin Delta Rho (SCO2) -0.75 gram per cc 0.25
Neutron Porosity (NUCL) 0.45 v/v -0.15
Best Bin Bulk Density (SBD2) 1.85 gram per cc 2.85

Photoelectric Effect (SNP2) 0 barns/electron 10
