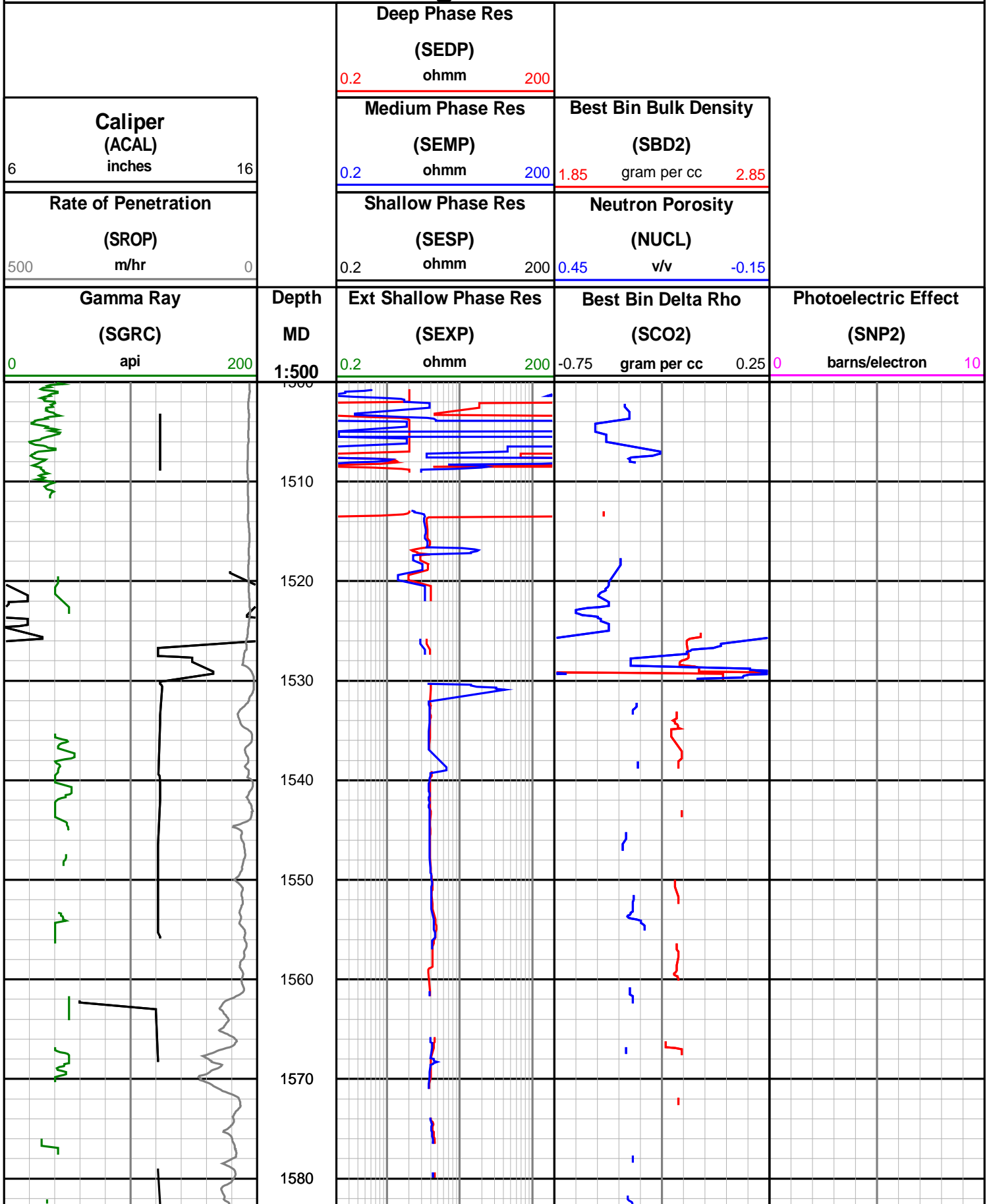
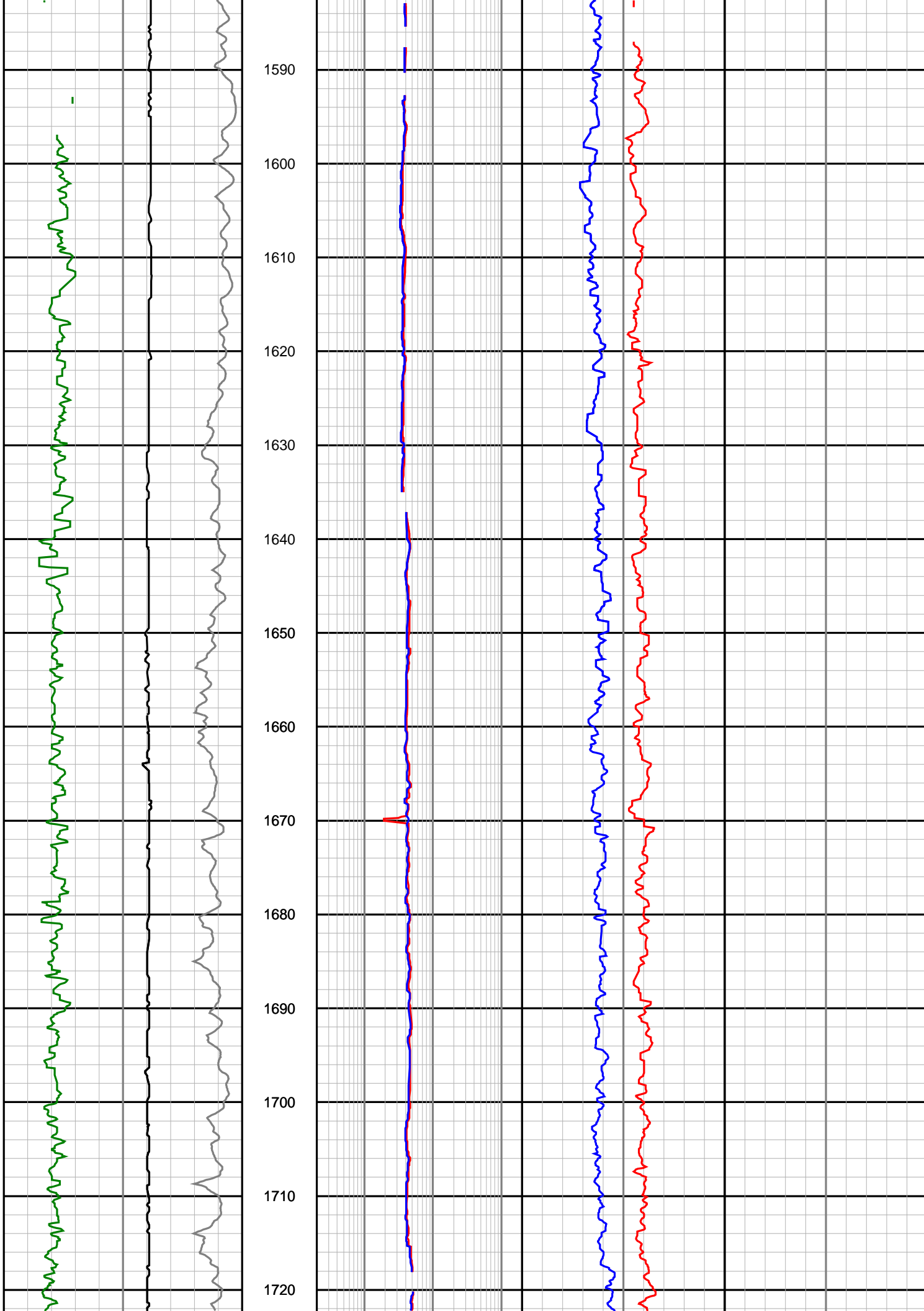


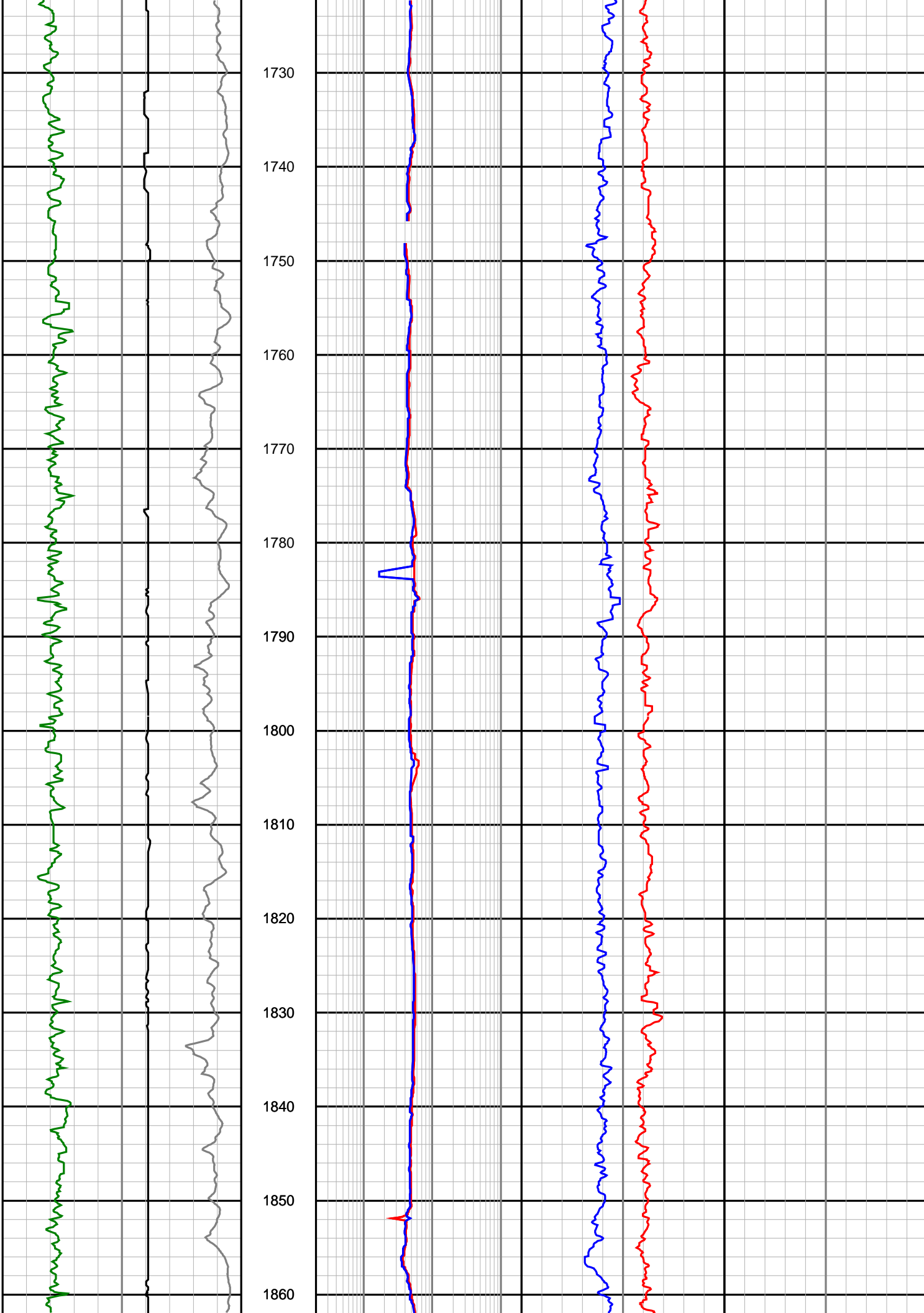
Nexus Energy Ltd

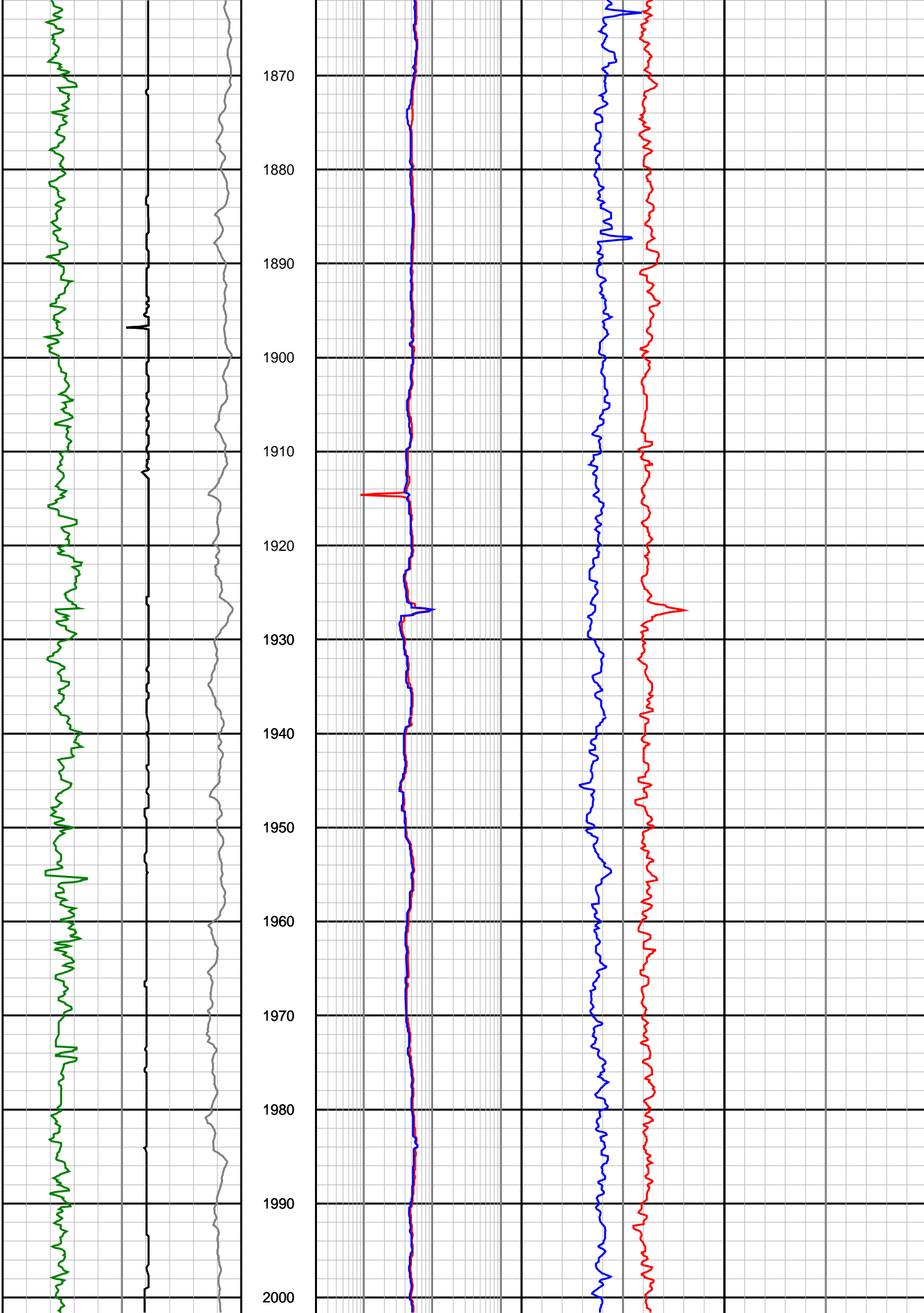
Culverin-1

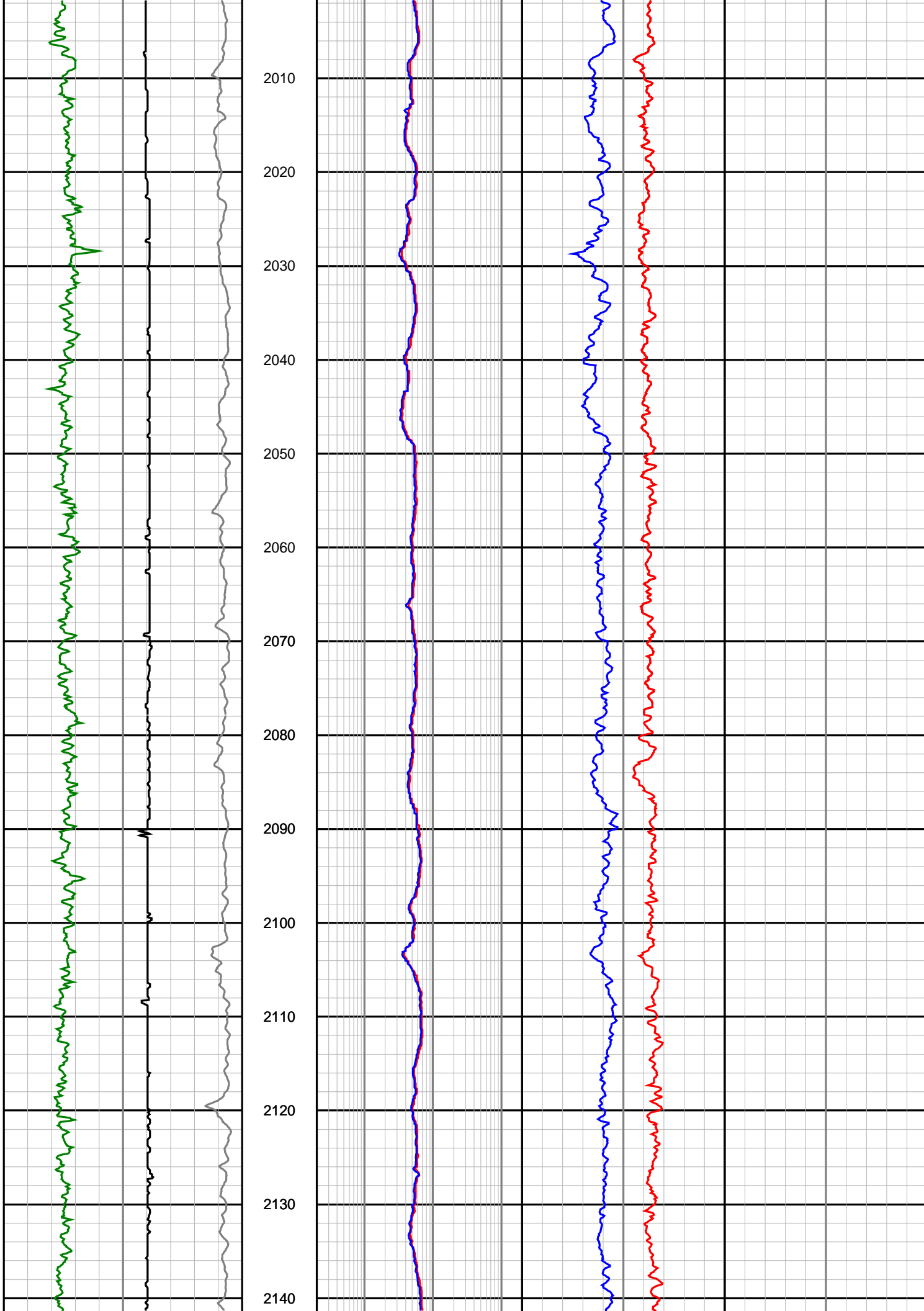
Realtime LWD Log - 12 1/4" Hole Section

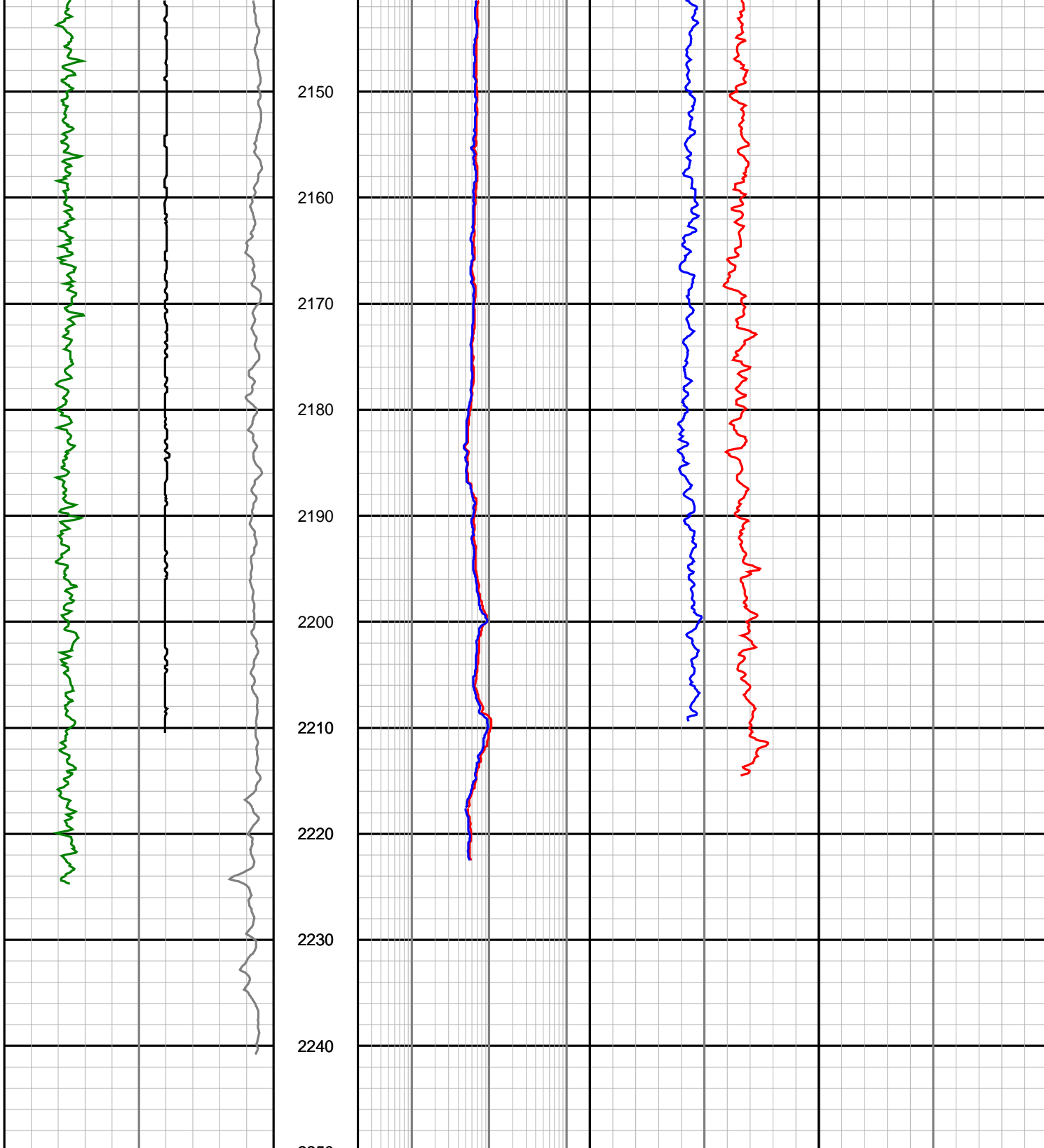












Gamma Ray (SGRC) api	Depth MD 1:500	Ext Shallow Phase Res (SEXP) ohmm	Best Bin Delta Rho (SCO2) gram per cc	Photoelectric Effect (SNP2) barns/electron
0 200		0.2 200	-0.75 0.25	0 10
Rate of Penetration (SROP) m/hr		Shallow Phase Res (SESP) ohmm	Neutron Porosity (NUCL) v/v	
500 0		0.2 200	0.45 -0.15	
Caliper (ACAL) inches		Medium Phase Res (SEMP) ohmm	Best Bin Bulk Density (SBD2) gram per cc	
6 16		0.2 200	1.85 2.85	
		Deep Phase Res		

(SEDP)

0.2

ohmm

200