



# DRILLING LOG



FROM :(mt) 2700

TO :(mt) 3410

SCALE : 1/ 500

Well Name : CULVERIN-1

Company : NEXUS ENERGY

Country : AUSTRALIA

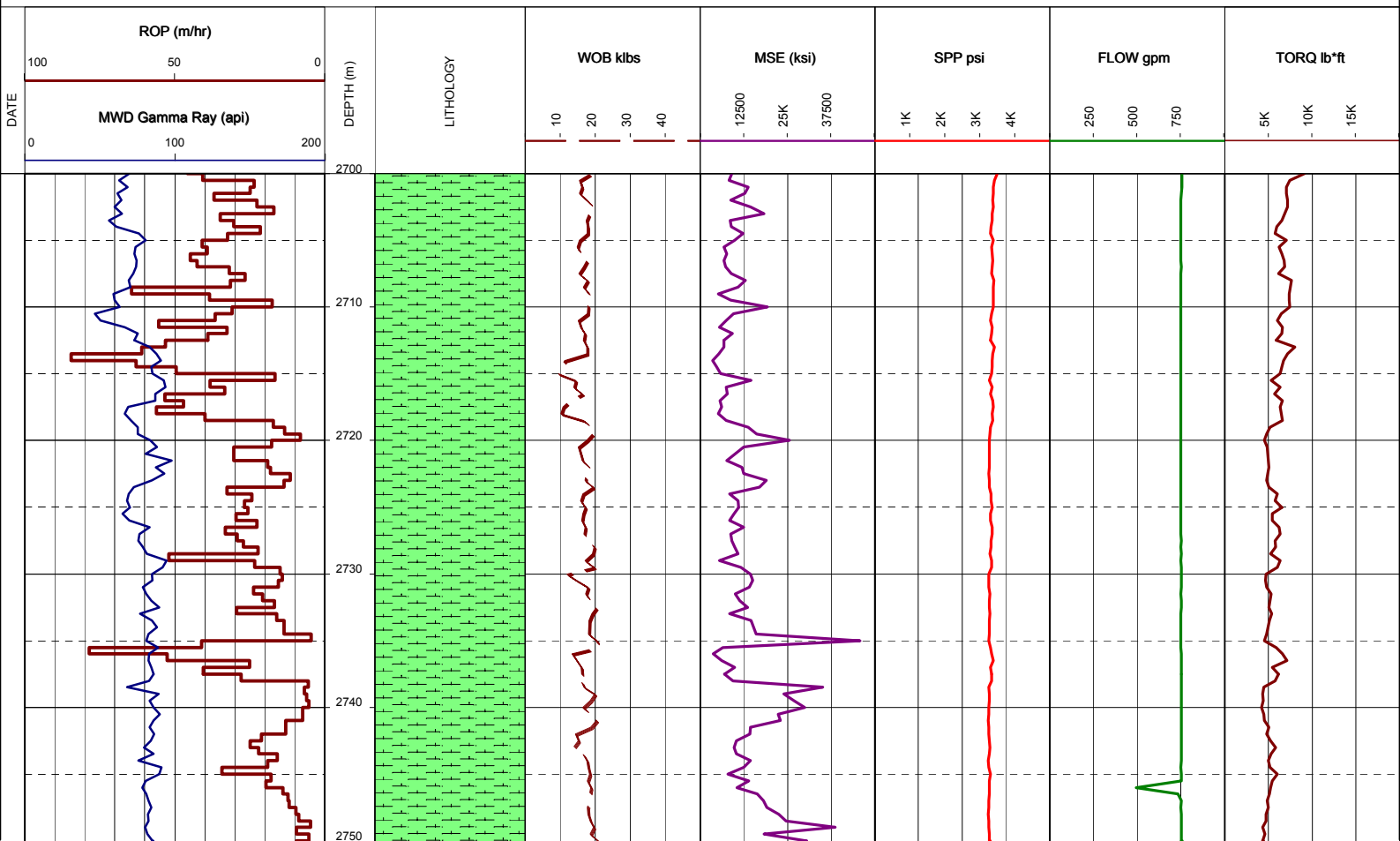
RT-MSL (m) : 22

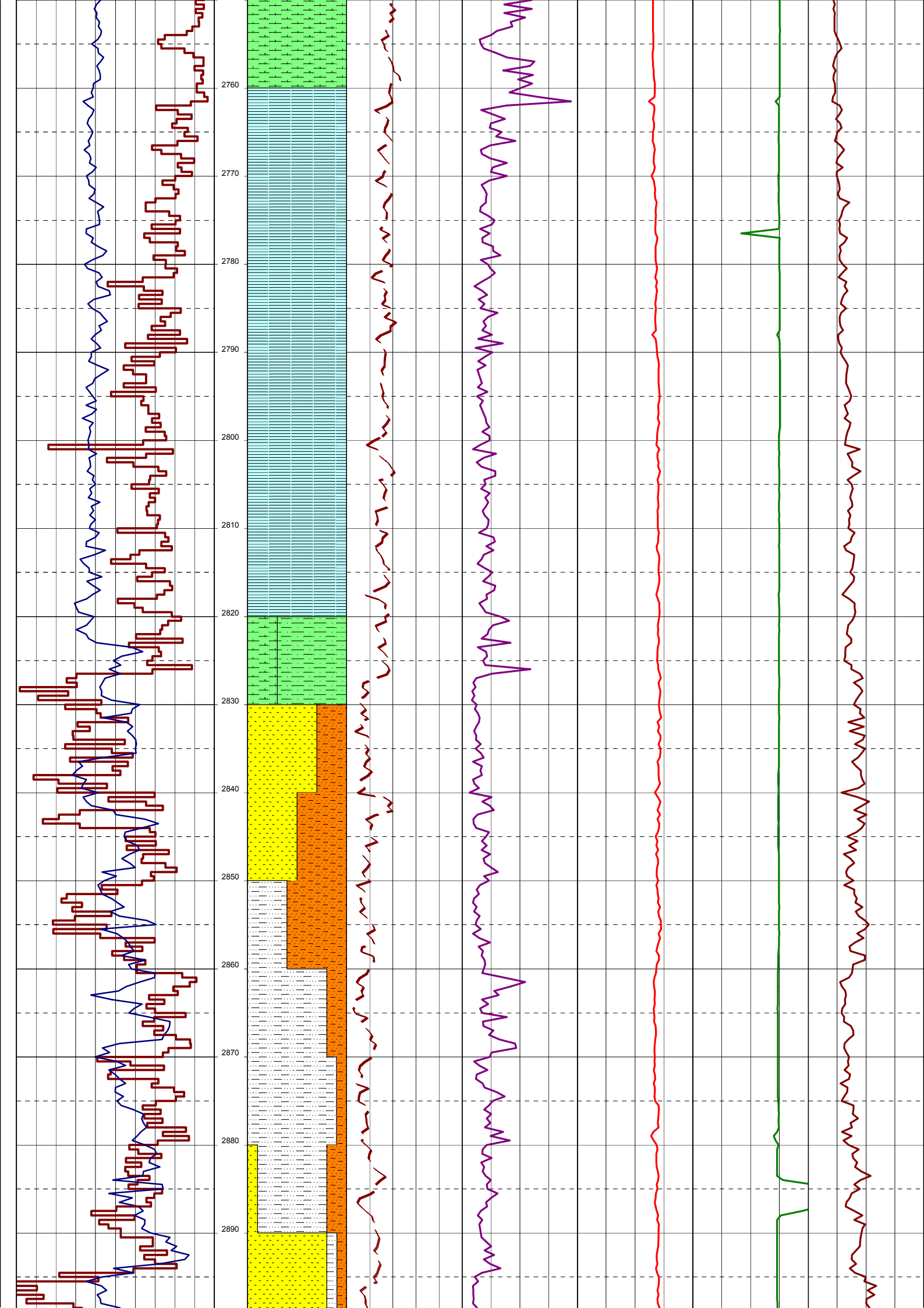
Final TD (mMDRT): m

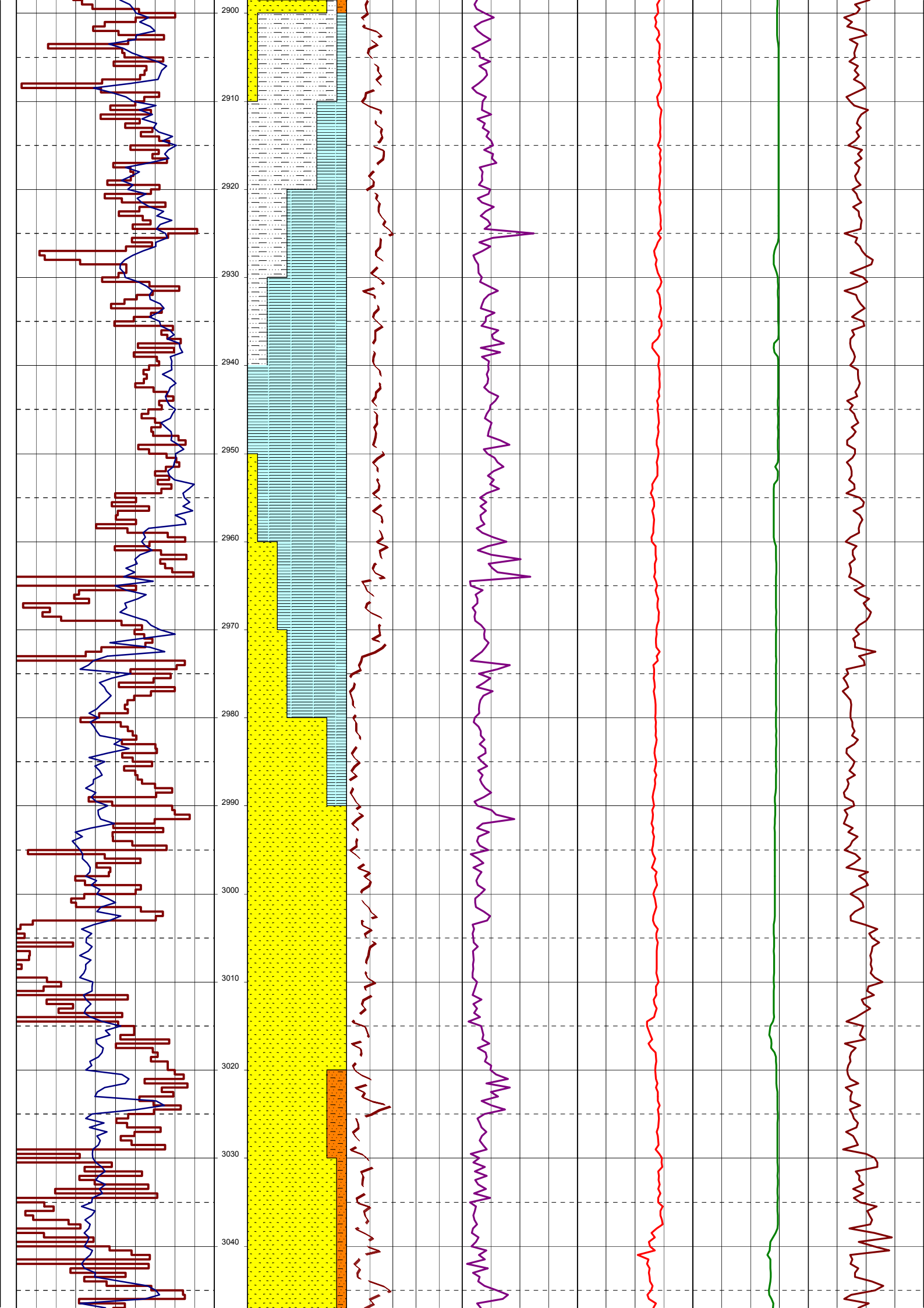
RT-SEABED (m): 607

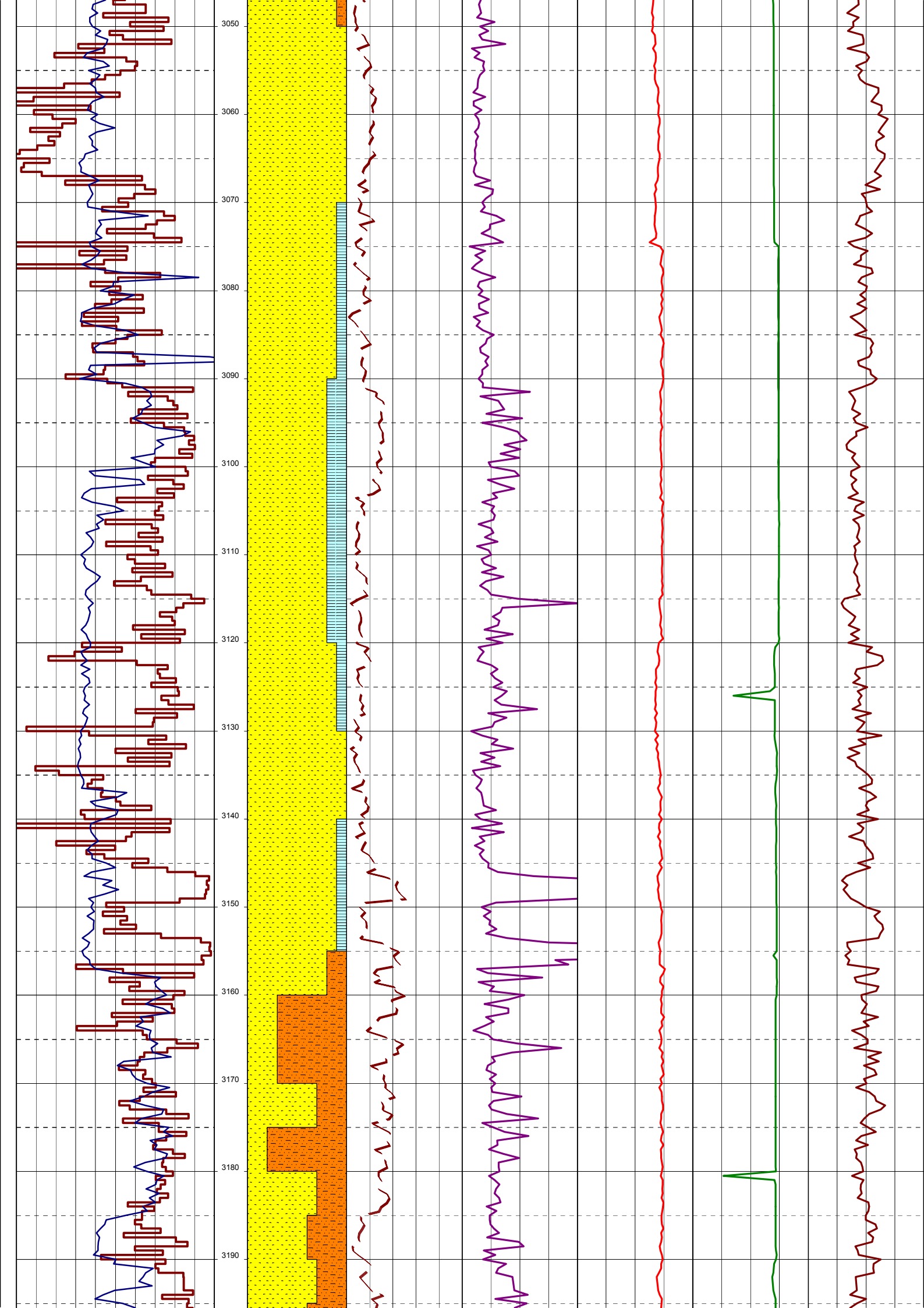
Final TVD (m TVDSS): m

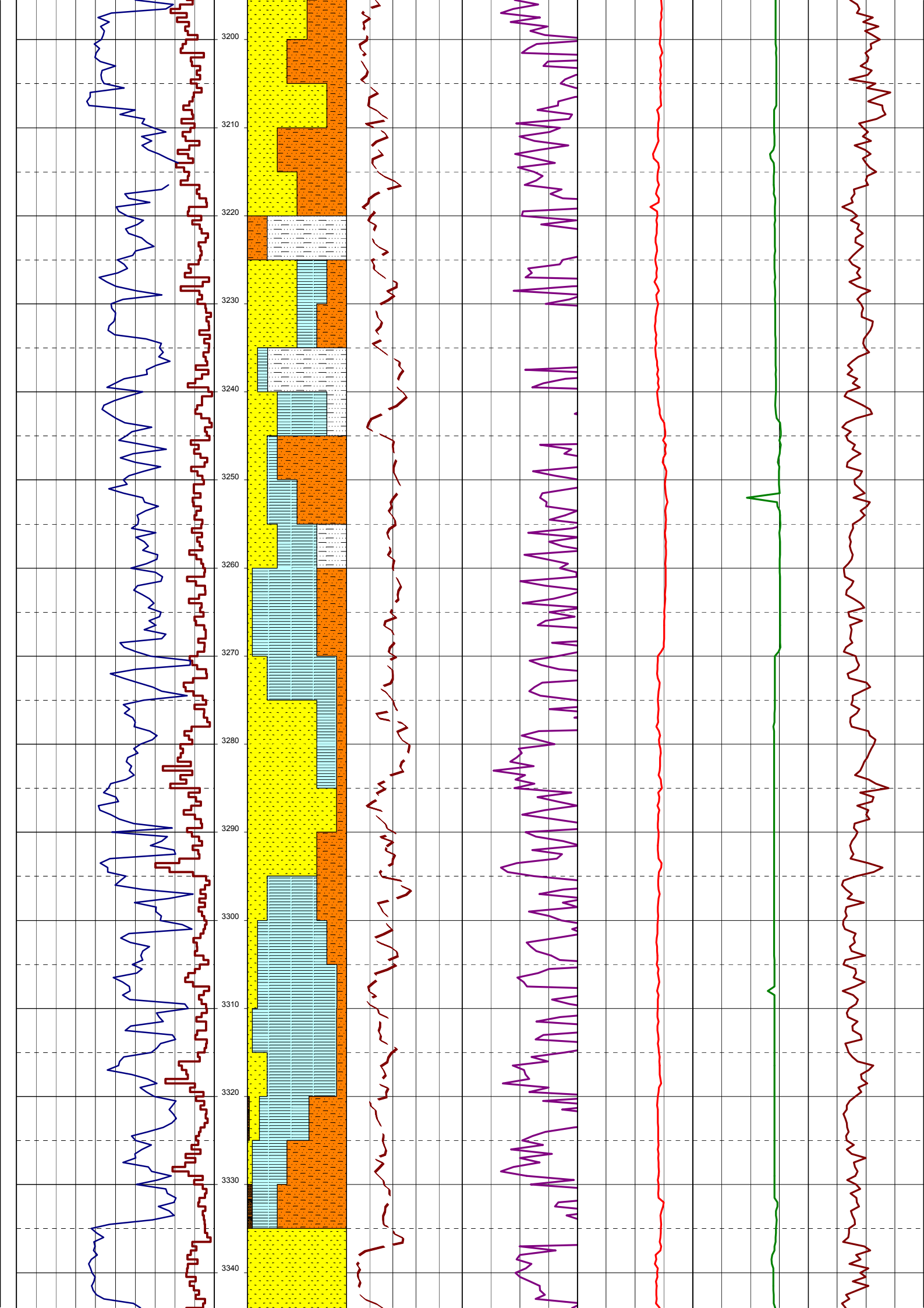
Generated by ALS Package

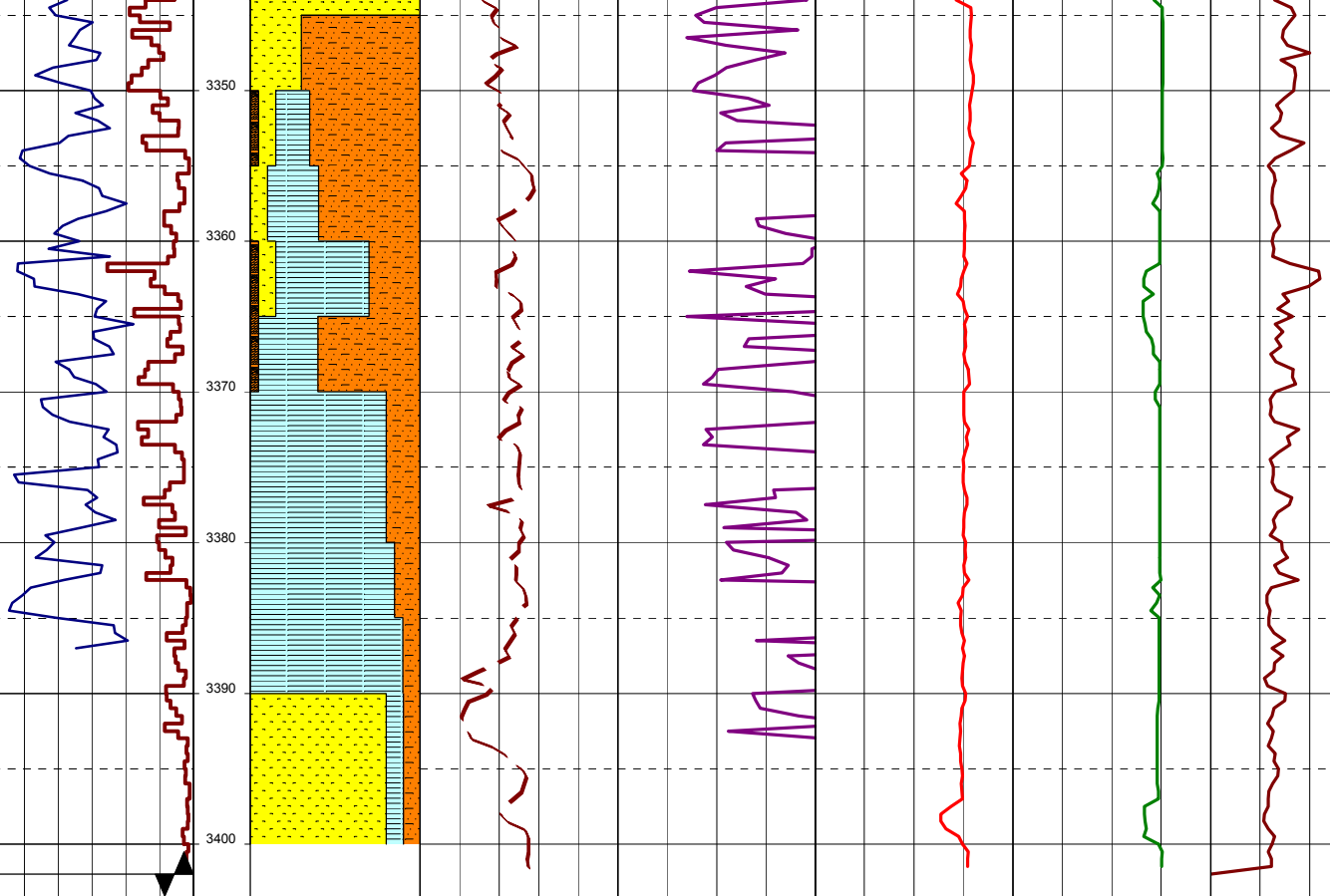












BIT #3 HYCALOG RSX-616M  
SIZE: 311mm  
JETS: 4x18, 2x28  
IN: 3402m OUT:  
RUN: HRS:

3410

