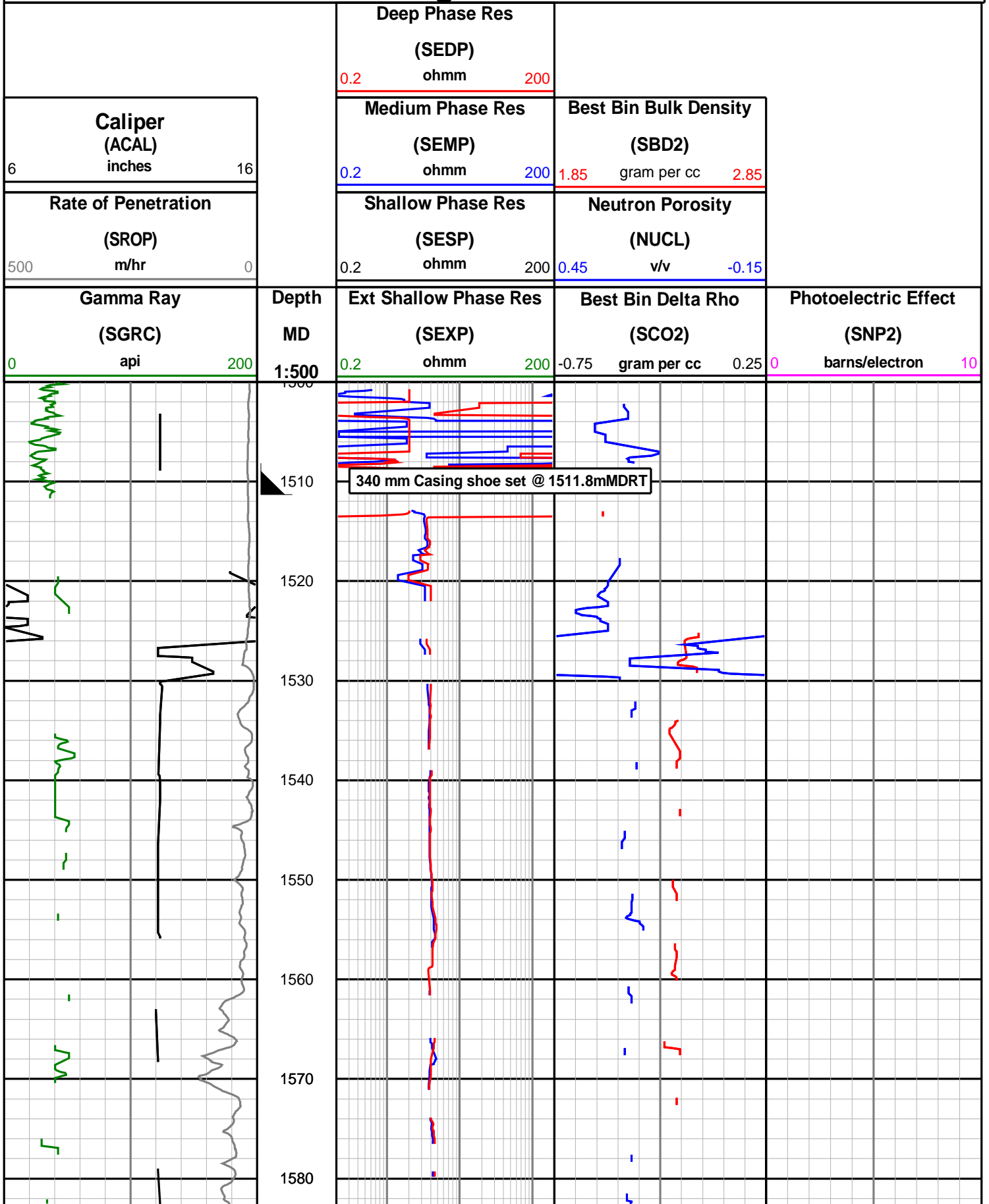
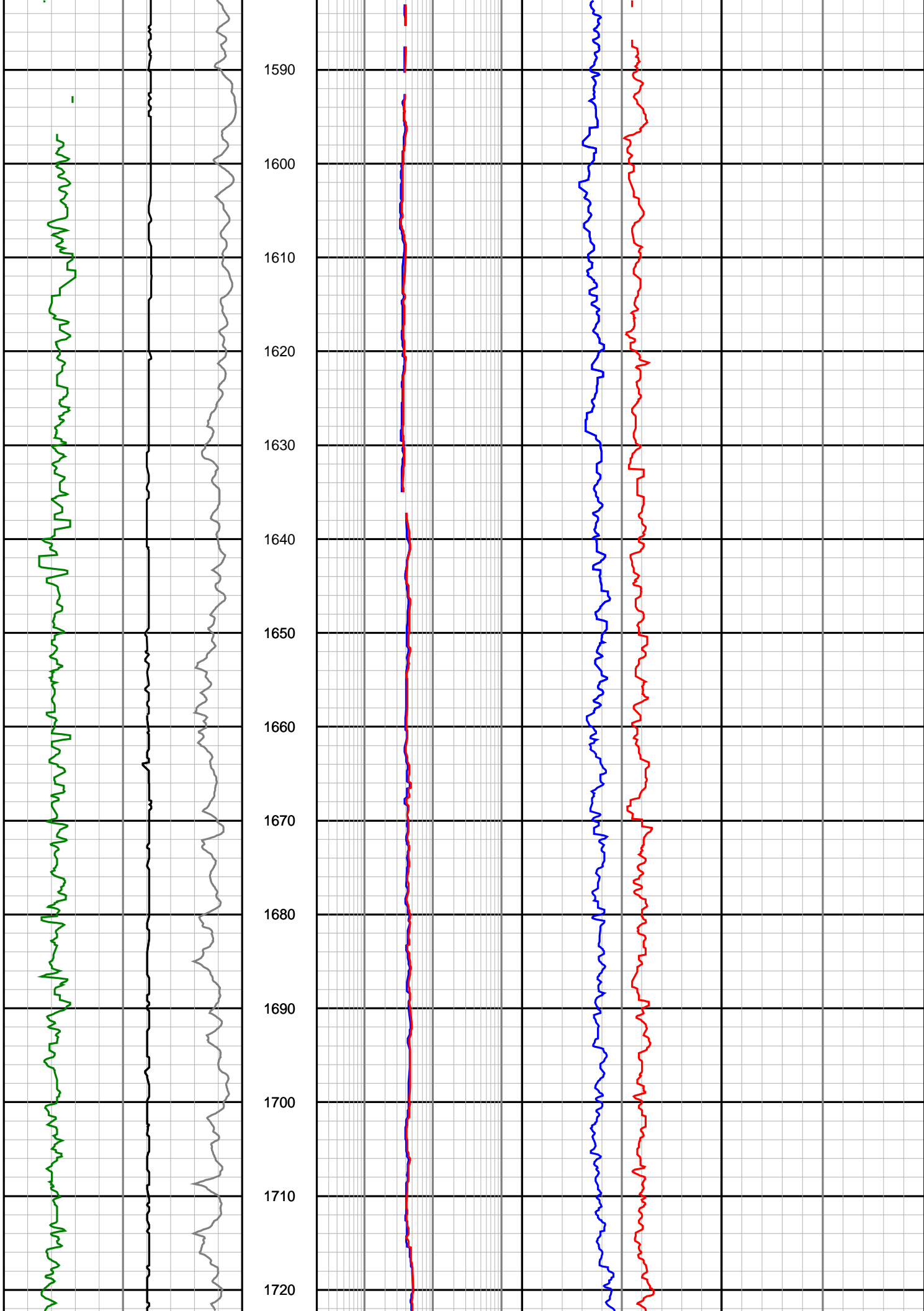


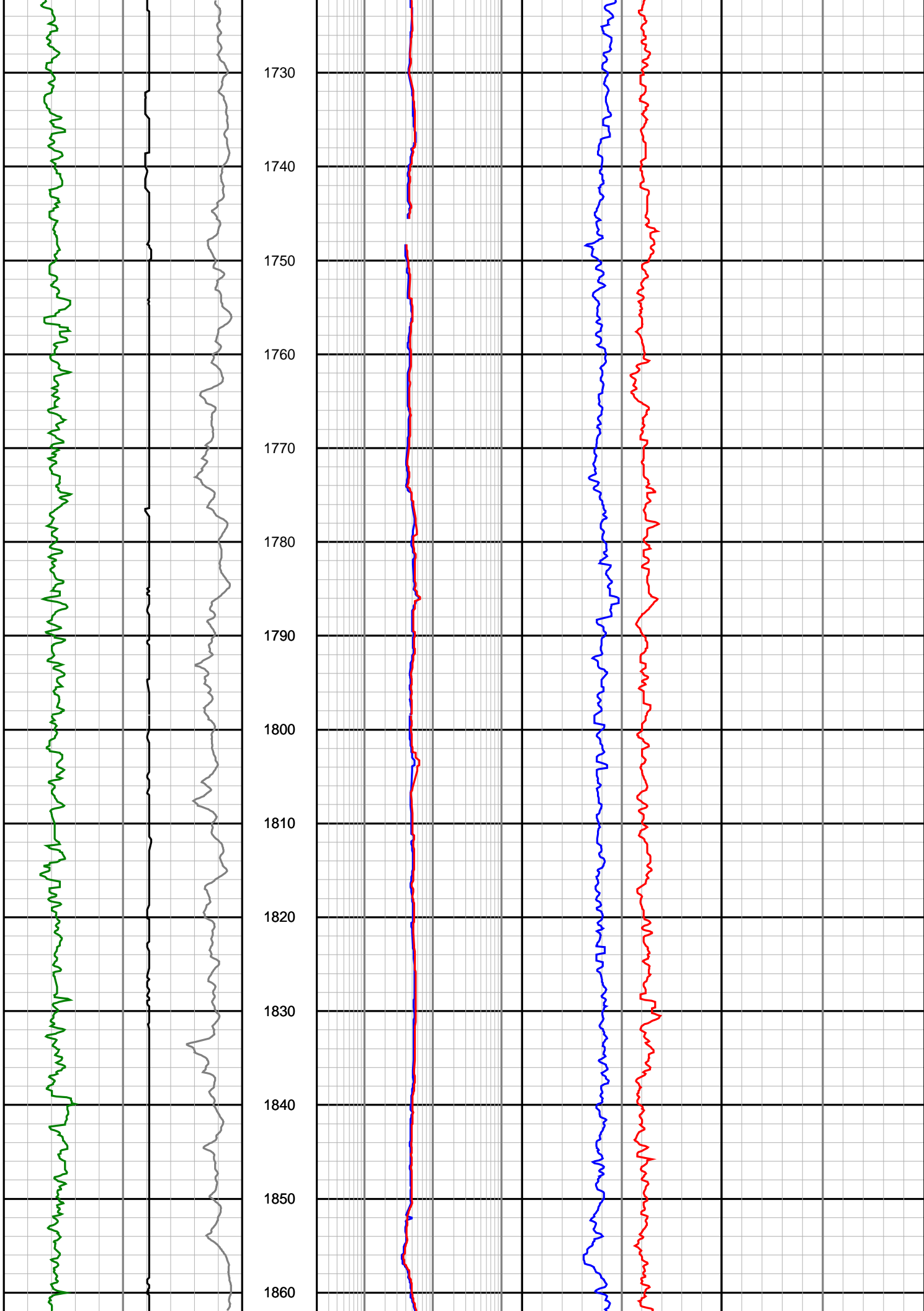
Nexus Energy Ltd

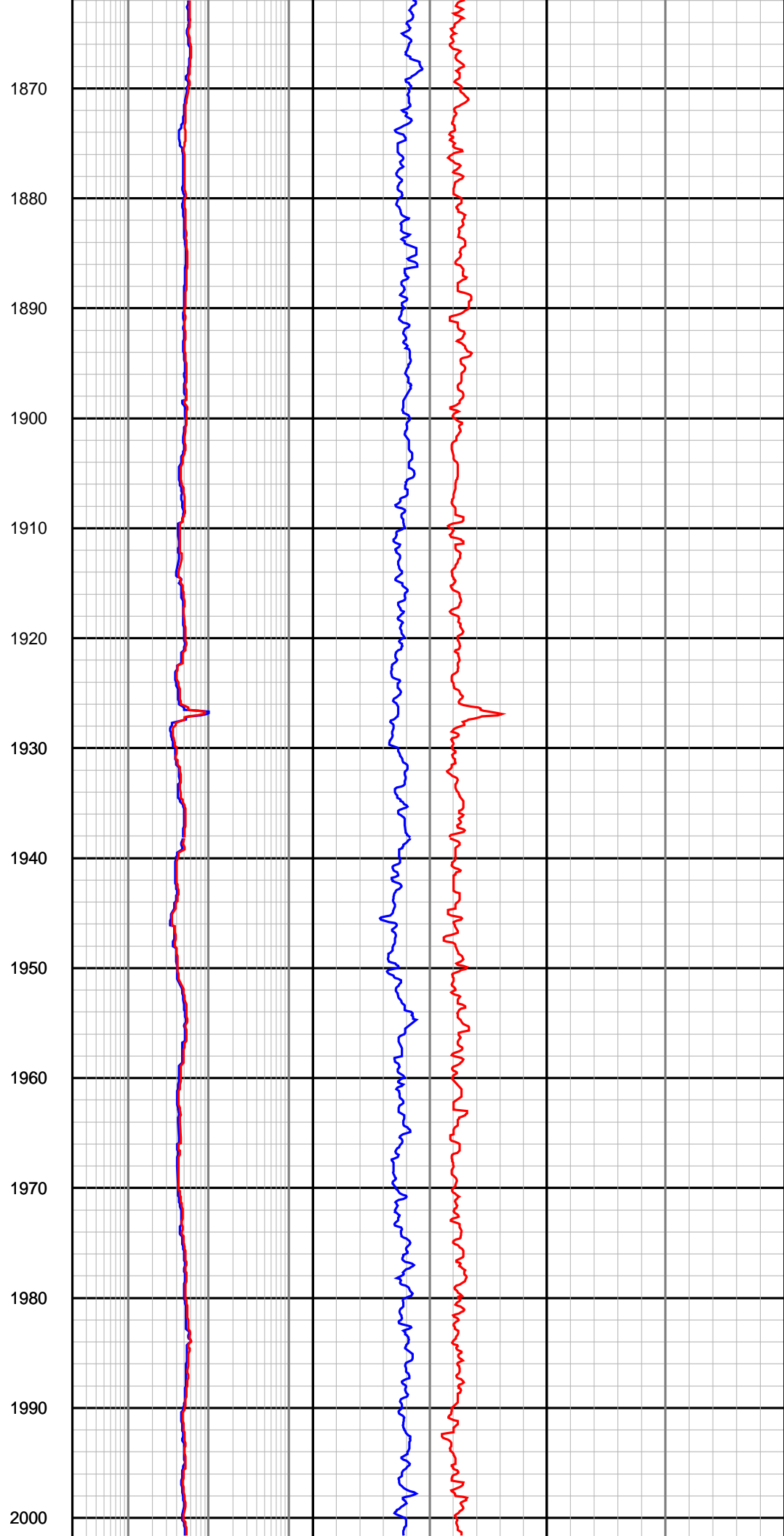
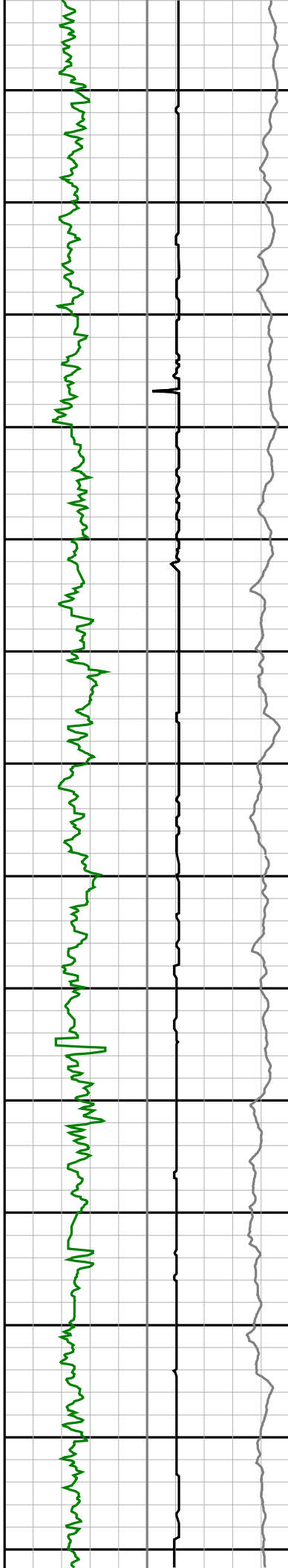
Culverin-1

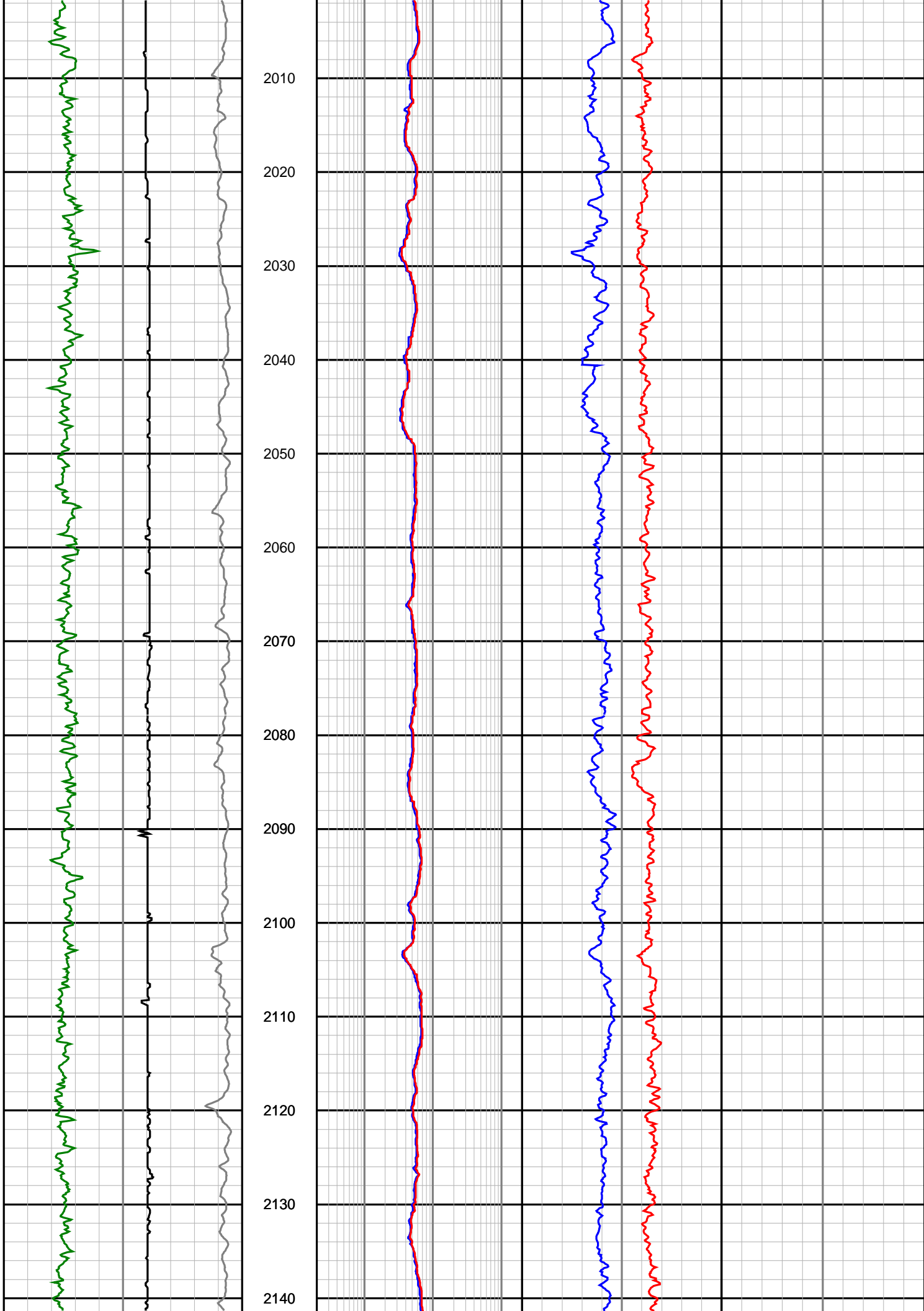
Realtime LWD Log - 12 1/4" Hole Section

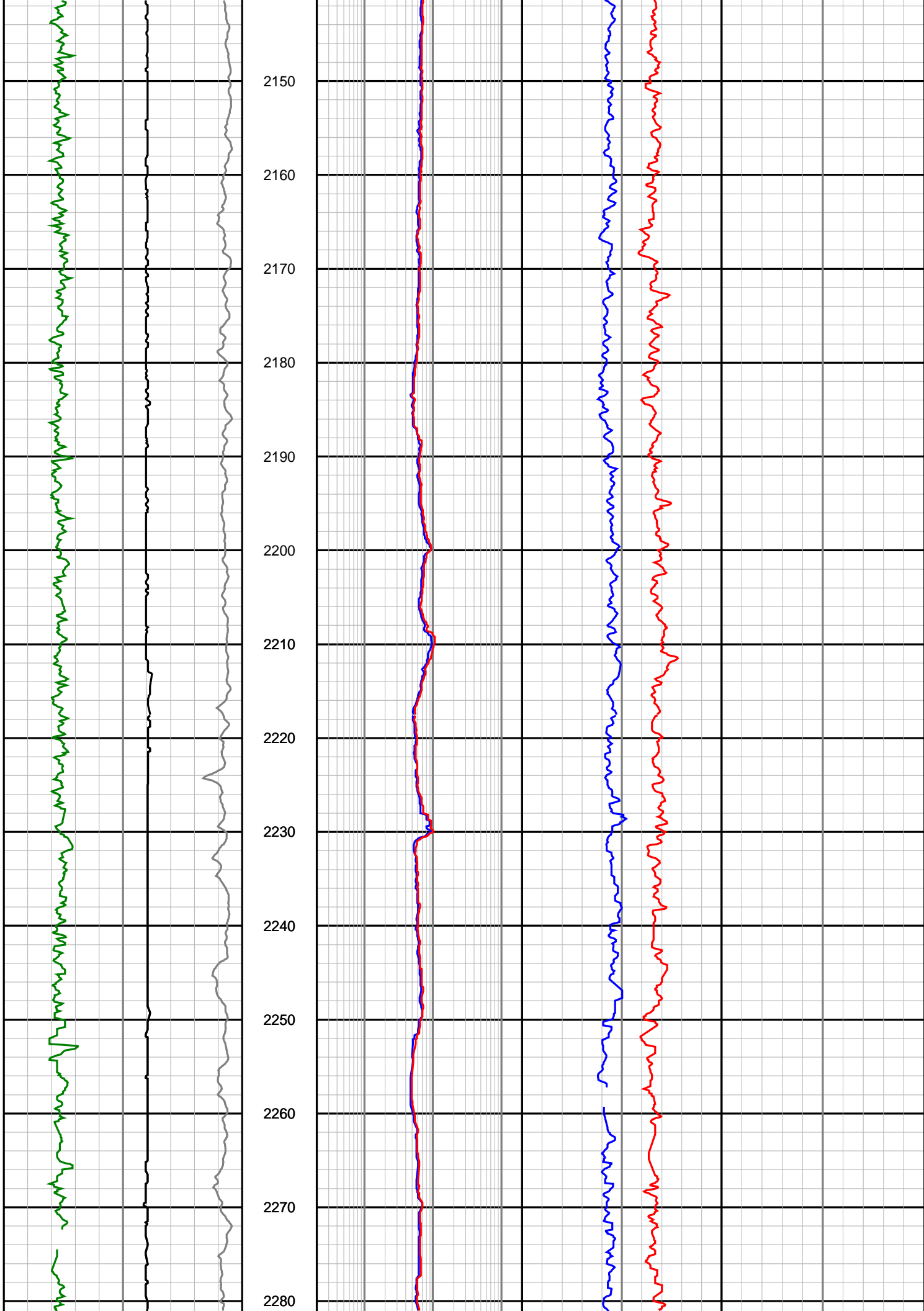


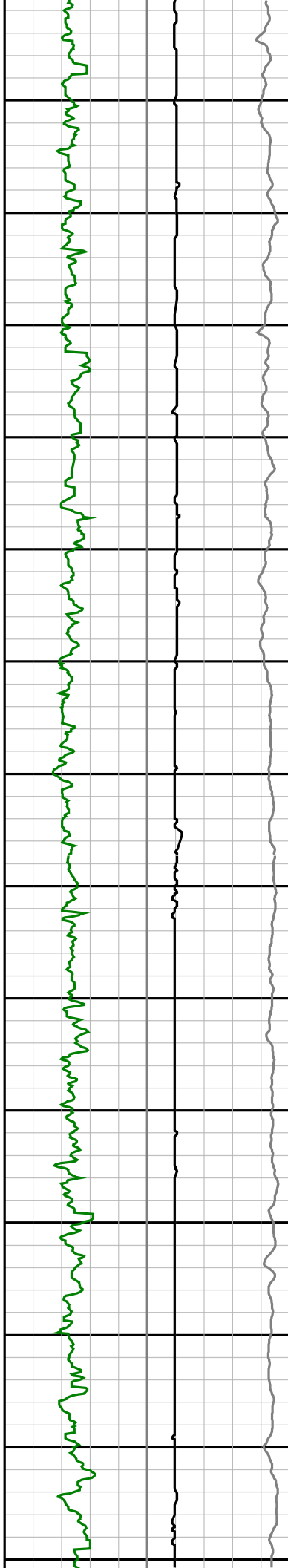




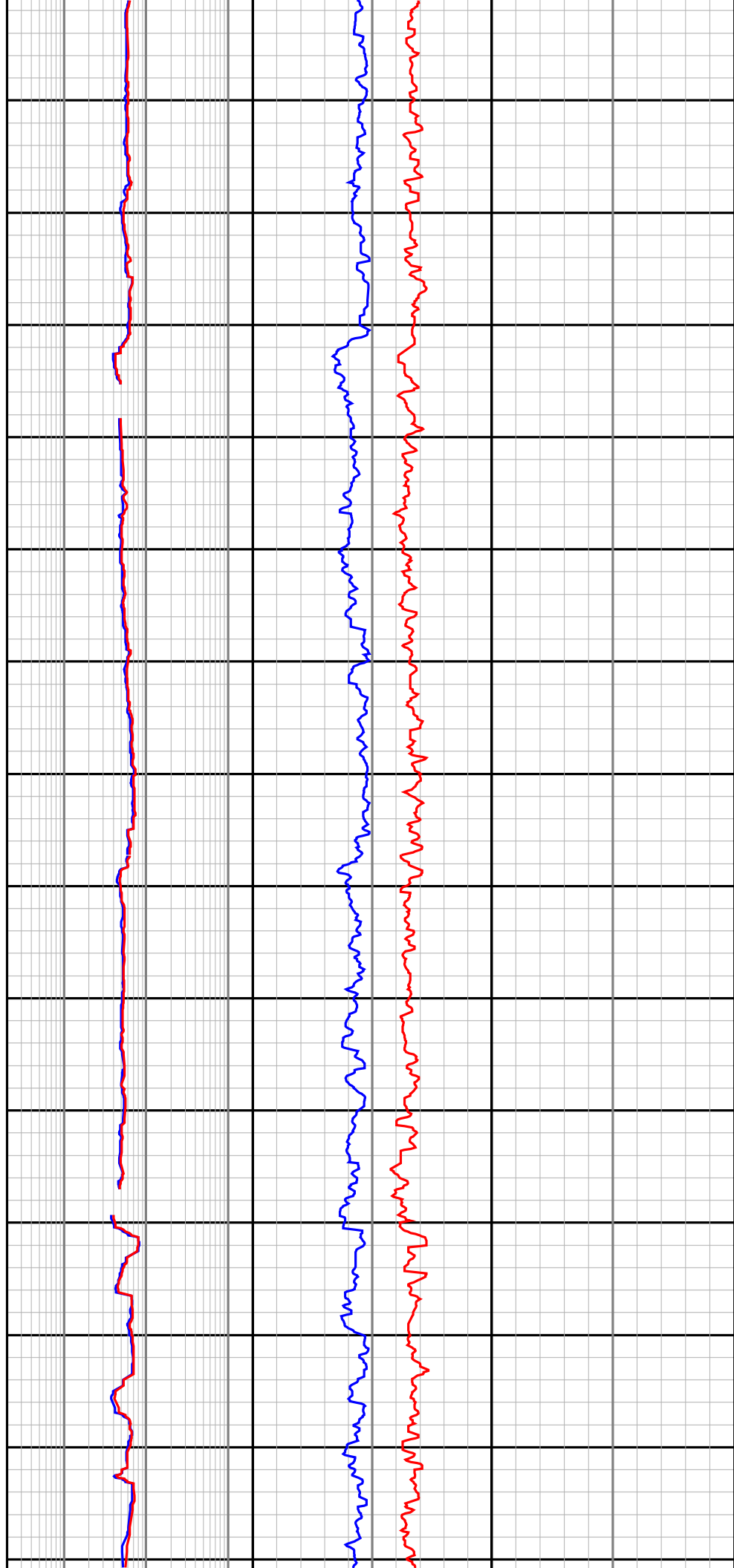


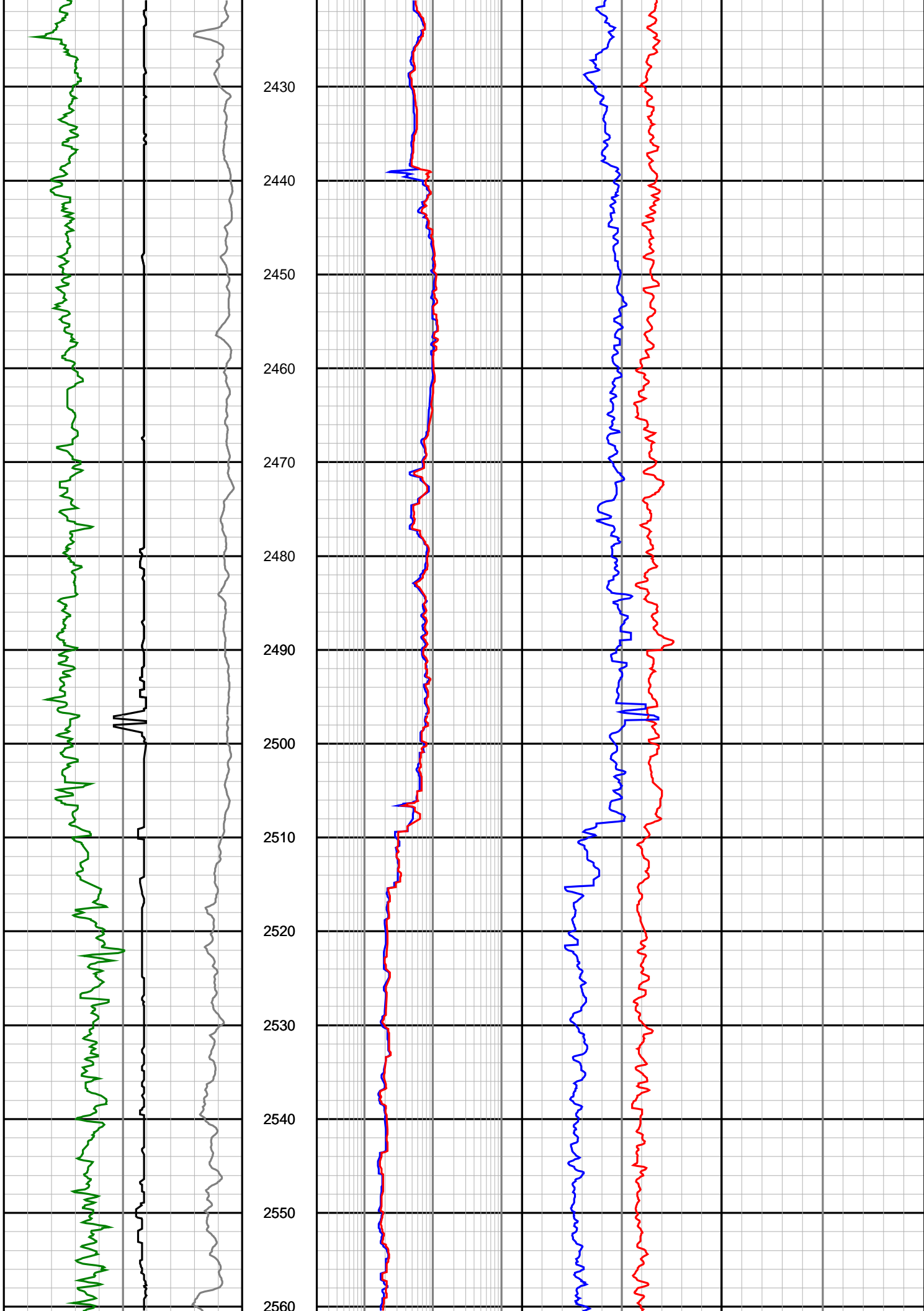


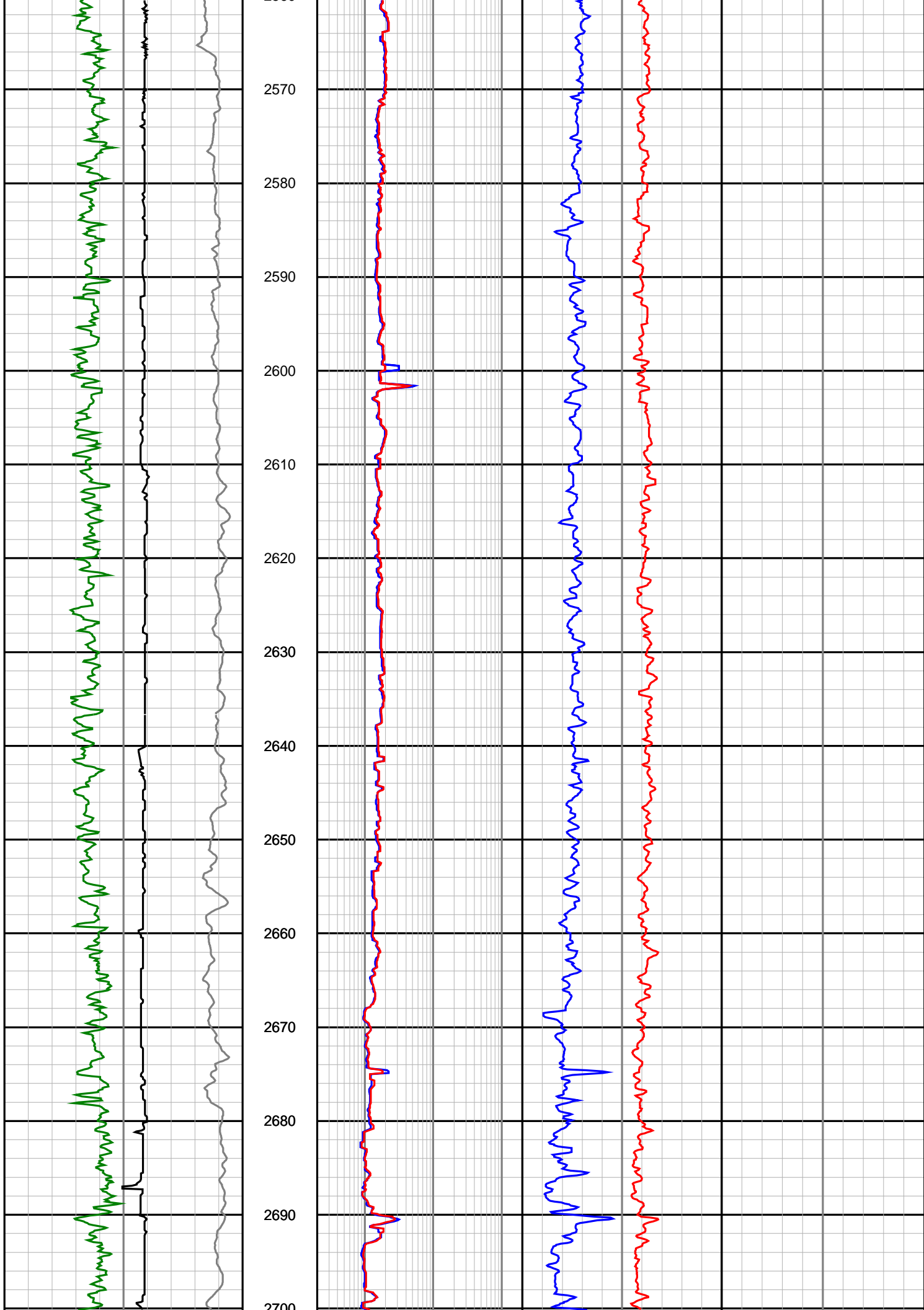


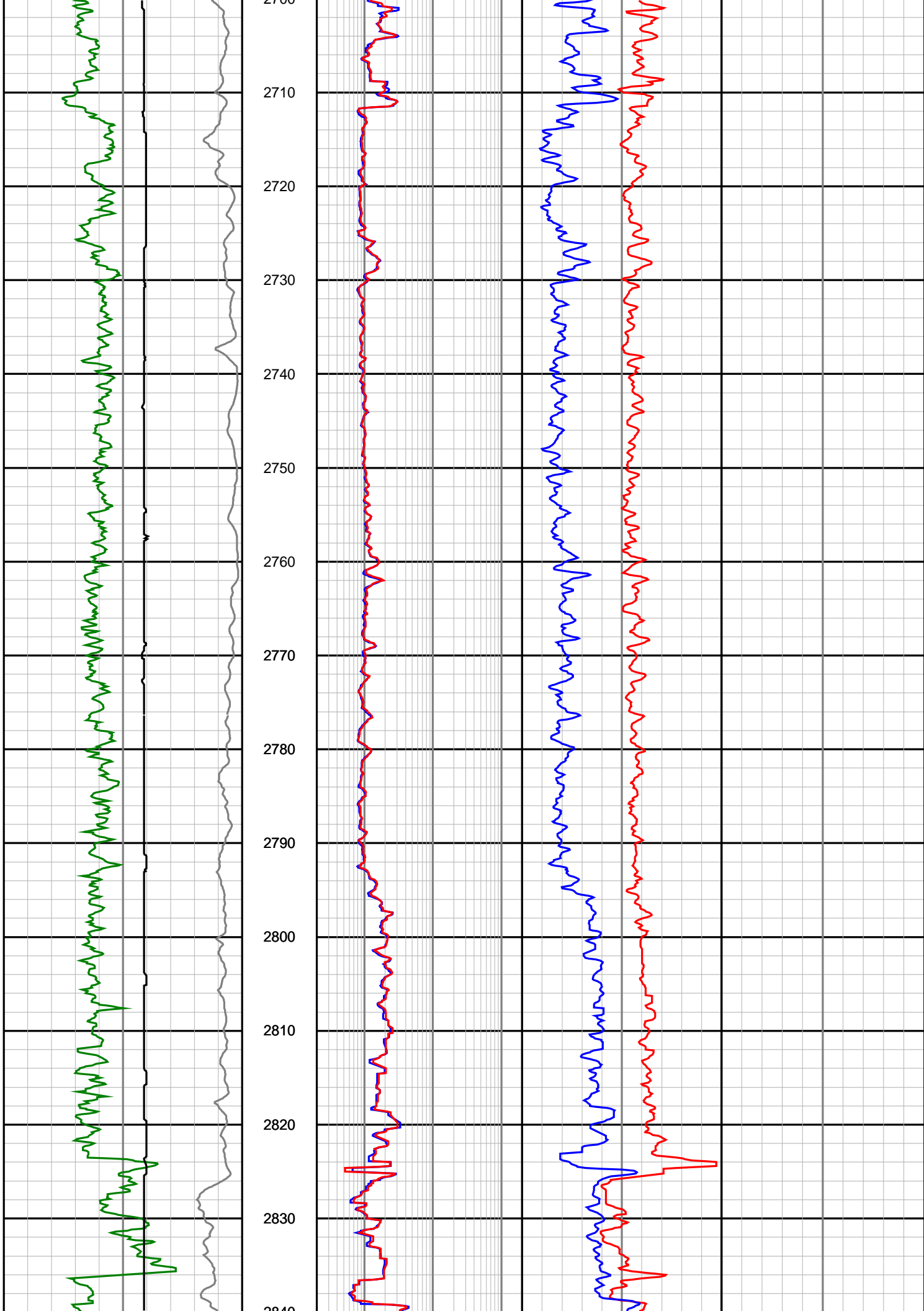


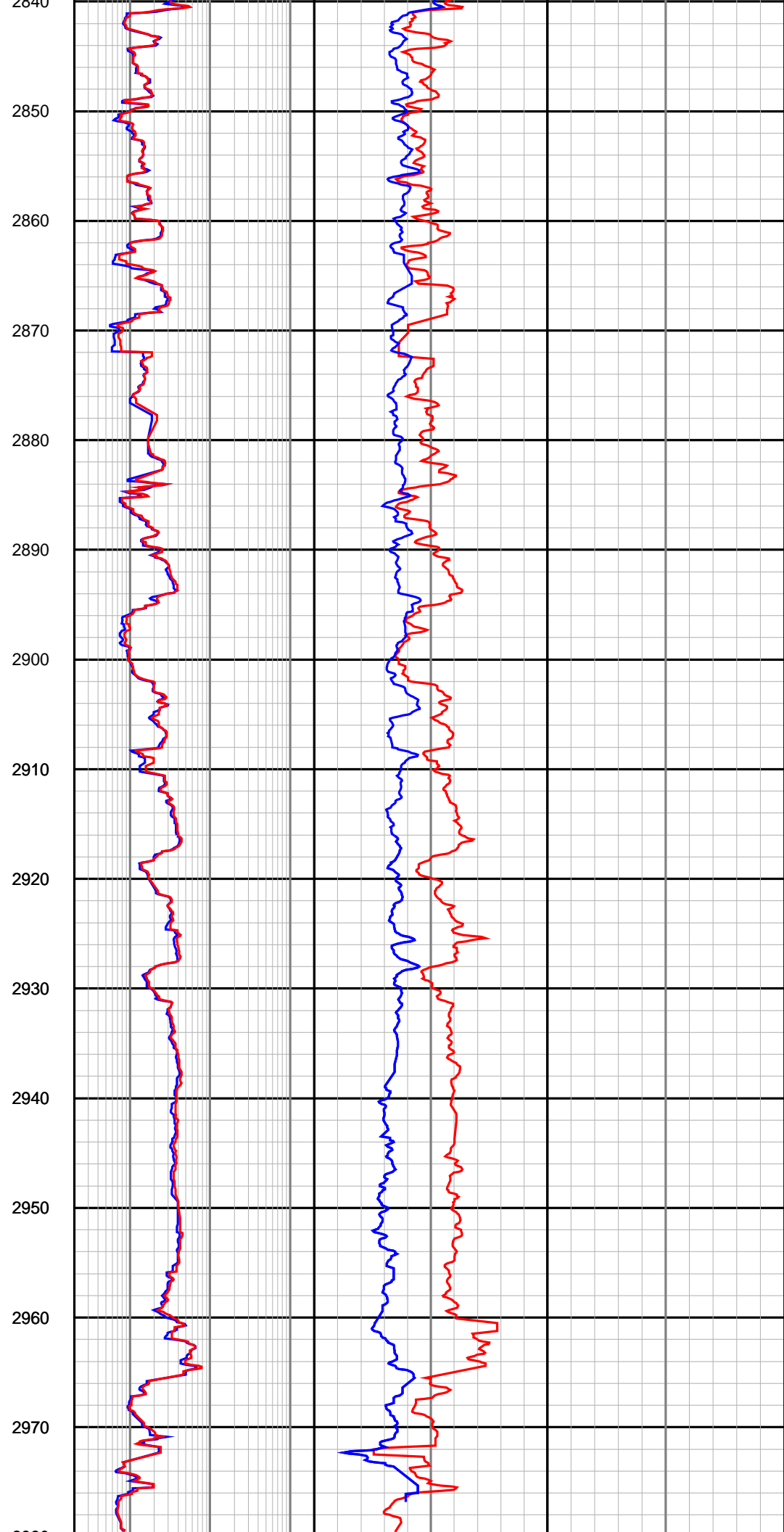
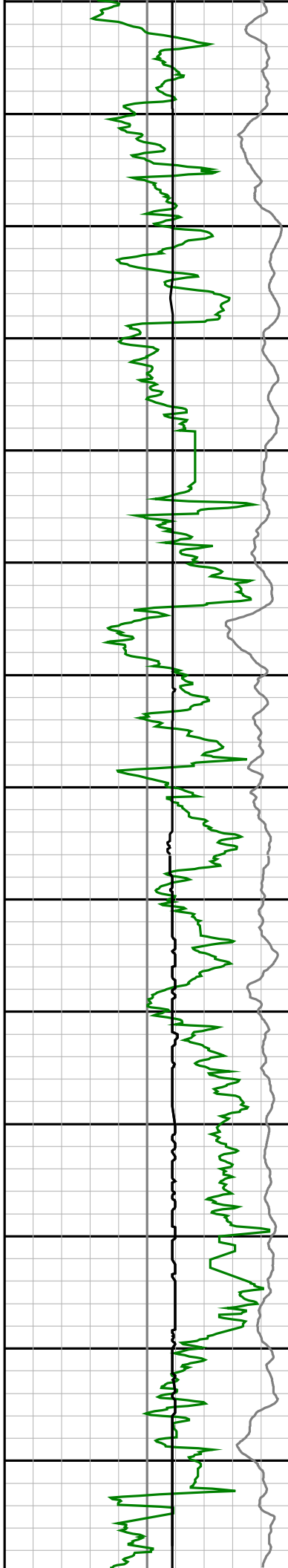
2290
2300
2310
2320
2330
2340
2350
2360
2370
2380
2390
2400
2410
2420

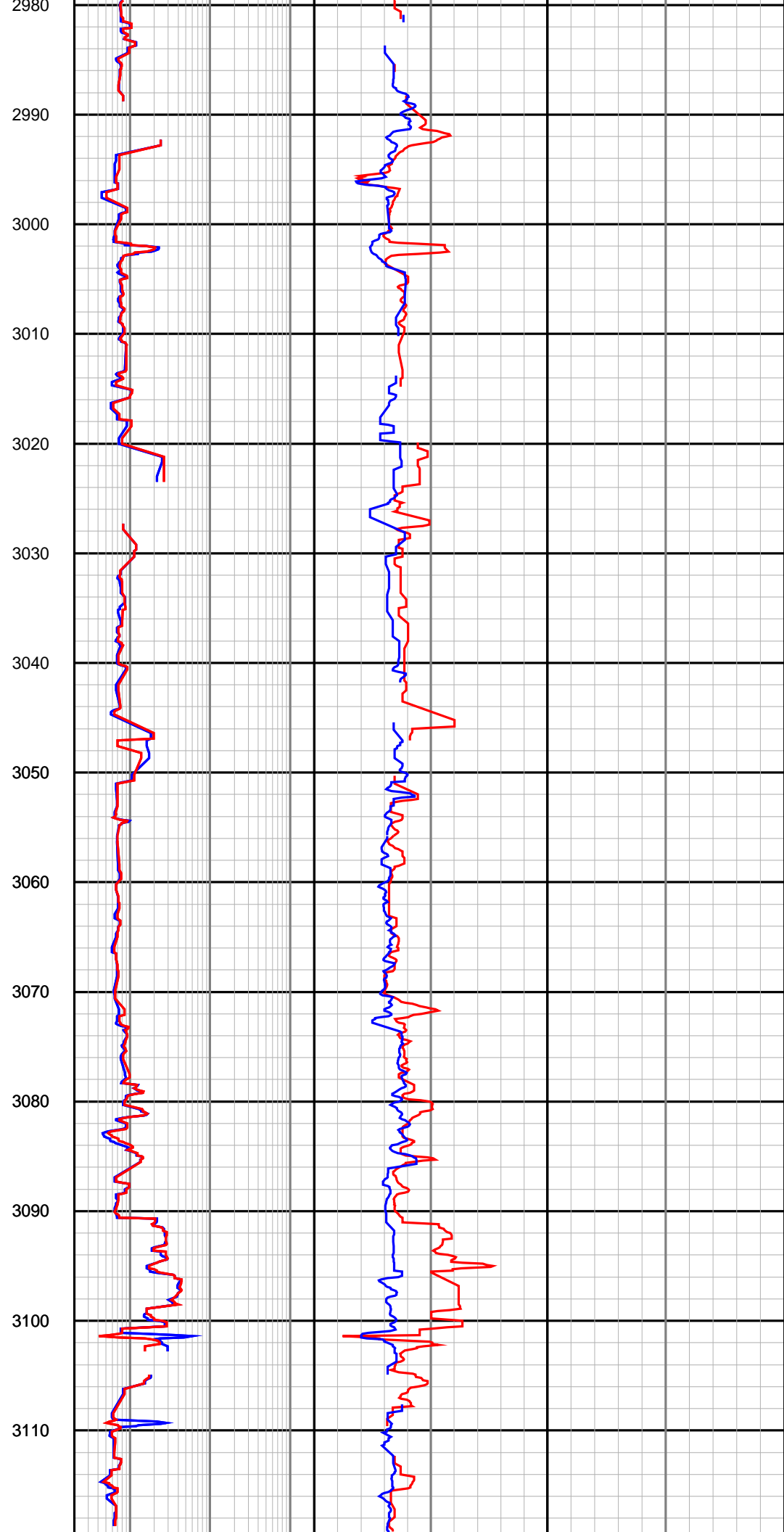
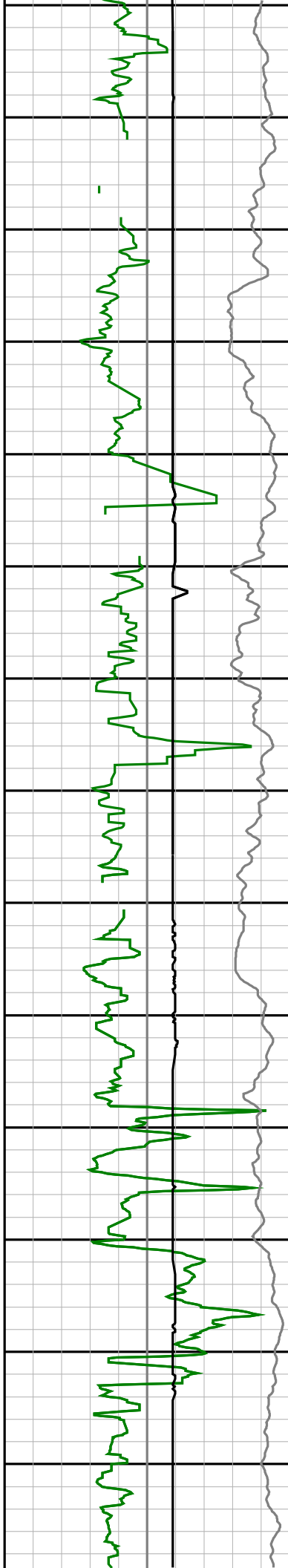


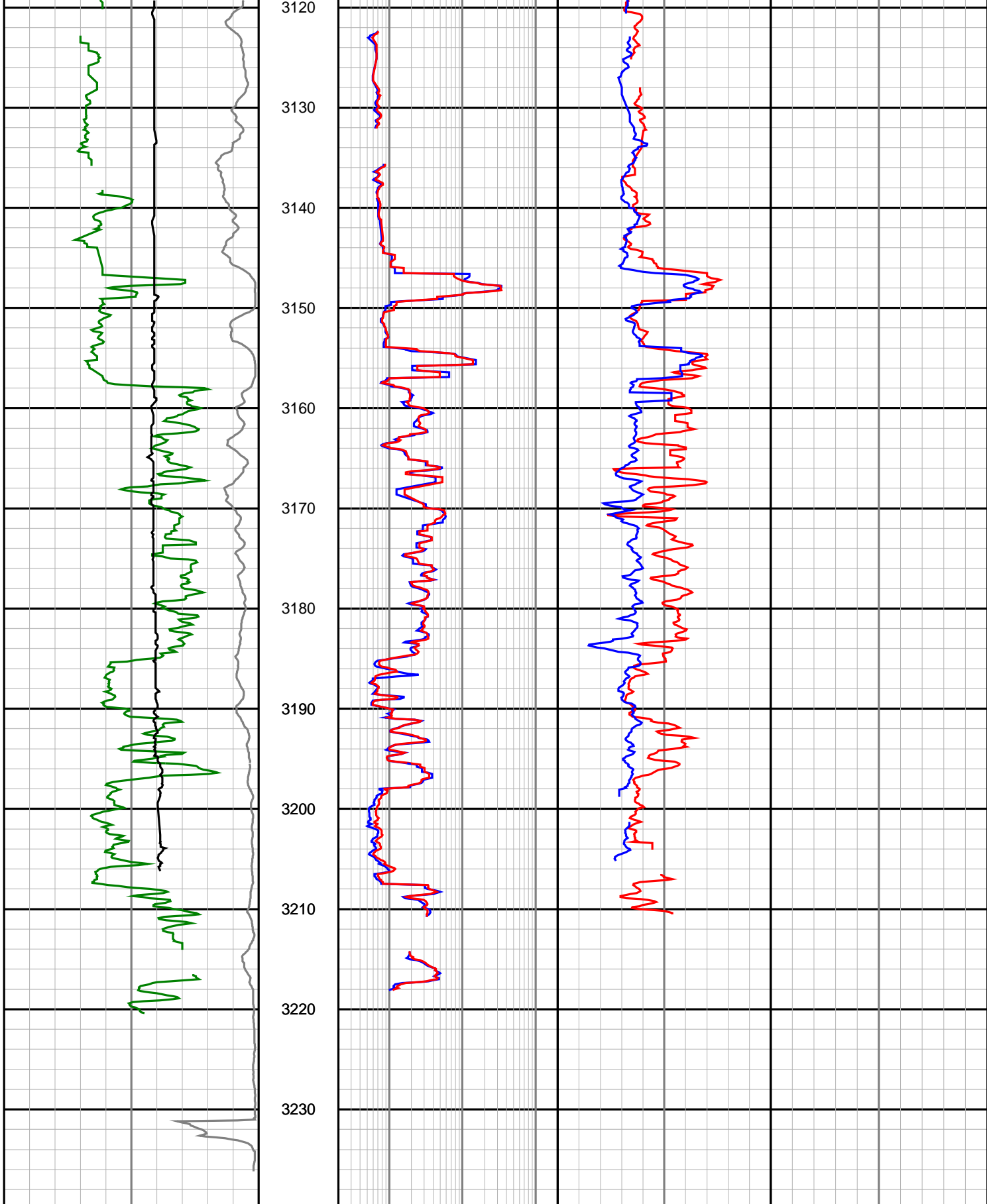












<p>Gamma Ray (SGRC) api</p> <p>0 200</p>	<p>Depth MD 1:500</p>	<p>Ext Shallow Phase Res (SEXP) ohmm</p> <p>0.2 200</p>	<p>Best Bin Delta Rho (SCO2) gram per cc</p> <p>-0.75 0.25</p>	<p>Photoelectric Effect (SNP2) barns/electron</p> <p>0 10</p>
<p>Rate of Penetration (SROP) m/hr</p> <p>500 0</p>		<p>Shallow Phase Res (SESP) ohmm</p> <p>0.2 200</p>	<p>Neutron Porosity (NUCL) v/v</p> <p>0.45 -0.15</p>	

Caliper (ACAL) inches	
6	16

Medium Phase Res (SEMP) ohmm	
0.2	200

Best Bin Bulk Density (SBD2) gram per cc	
1.85	2.85

Deep Phase Res (SEDP) ohmm	
0.2	200