

DEPTH SUMMARY LISTING

Date Created: 16-SEP-2009 20:32:29

Depth System Equipment

Depth Measuring Device		Tension Device		Logging Cable	
Type:	IDW-E	Type:	CMTD-B/A	Type:	7-46ZV XS
Serial Number:	727	Serial Number:	1173	Serial Number:	708145
Calibration Date:	08-May-209	Calibration Date:	16-09-2009	Length:	6656 M
Calibrator Serial Number:	30	Calibrator Serial Number:	1173	Conveyance Method: Wireline Rig Type: Offshore Fixed	
Calibration Cable Type:	7-46ZV XS	Number of Calibration Points:	10		
Wheel Correction 1:	-1	Calibration RMS:	30		
Wheel Correction 2:	0	Calibration Peak Error:	41		

Depth Control Parameters

Log Sequence:	First Log In the Well
Rig Up Length At Surface:	0.00 M
Rig Up Length At Bottom:	0.00 M
Rig Up Length Correction:	0.00 M
Stretch Correction:	
Tool Zero Check At Surface:	0.00 M

Depth Control Remarks

1. IDW used as primary depth control
2. Back-up depth control was the Z-Chart.
3. First log in the well, Schlumberge depth control procedures applied.
4. All logs zeroed at drill floor
5. Logs correlated to EXXONMobil correlation log provided by Client.
6. Correlation log not named or dated.











DISCLAIMER

THE USE OF AND RELIANCE UPON THIS RECORDED-DATA BY THE HEREIN NAMED COMPANY (AND ANY OF ITS AFFILIATES, PARTNERS, REPRESENTATIVES, AGENTS, CONSULTANTS AND EMPLOYEES) IS SUBJECT TO THE TERMS AND CONDITIONS AGREED UPON BETWEEN SCHLUMBERGER AND THE COMPANY, INCLUDING: (a) RESTRICTIONS ON USE OF THE RECORDED-DATA; (b) DISCLAIMERS AND WAIVERS OF WARRANTIES AND REPRESENTATIONS REGARDING COMPANY'S USE OF AND RELIANCE UPON THE RECORDED-DATA; AND (c) CUSTOMER'S FULL AND SOLE RESPONSIBILITY FOR ANY INFERENCE DRAWN OR DECISION MADE IN CONNECTION WITH THE USE OF THIS RECORDED-DATA.

OTHER SERVICES1		OTHER SERVICES2	
OS1:	None	OS1:	
OS2:		OS2:	
OS3:		OS3:	
OS4:		OS4:	
OS5:		OS5:	
REMARKS: RUN NUMBER 1		REMARKS: RUN NUMBER 2	
Log correlated to Schlumberger LWD log provided by client			
Objective: RIH with Junk Basket & 5.9" Guage ring to HUD, ensure access forMax-R			
RIH and set a Max-R with loaded with 4m of 4.5" 12spf Powerjet Omega .			
Maximum Well deviation = 67.38deg @ 1150m MDKB			

HUD tagged @ 4528m MDKB with Junk Basket					
CCL to Bottom Of Junk Basket = 2.52m					
Gun 1: Top shot 4444m–4448m MDKB					
CCL to Top Shot = 10.92m					
CCL stop Depth = 4433.08m MDKB					
Schlumberger crew:					
Day's: J Annear , M. Hancock – Nights: J.Light, A. McClellan					
RUN 1 SERVICE ORDER #: PROGRAM VERSION: FLUID LEVEL:			RUN 2 SERVICE ORDER #: PROGRAM VERSION: FLUID LEVEL:		
LOGGED INTERVAL	START	STOP	LOGGED INTERVAL	START	STOP

EQUIPMENT DESCRIPTION	
1	...
2	...
3	...
4	...
5	...
6	...
7	...
8	...
9	...
10	...
11	...
12	...
13	...
14	...
15	...
16	...
17	...
18	...
19	...
20	...
21	...
22	...
23	...
24	...
25	...
26	...
27	...
28	...
29	...
30	...
31	...
32	...
33	...
34	...
35	...
36	...
37	...
38	...
39	...
40	...
41	...
42	...
43	...
44	...
45	...
46	...
47	...
48	...
49	...
50	...
51	...
52	...
53	...
54	...
55	...
56	...
57	...
58	...
59	...
60	...
61	...
62	...
63	...
64	...
65	...
66	...
67	...
68	...
69	...
70	...
71	...
72	...
73	...
74	...
75	...
76	...
77	...
78	...
79	...
80	...
81	...
82	...
83	...
84	...
85	...
86	...
87	...
88	...
89	...
90	...
91	...
92	...
93	...
94	...
95	...
96	...
97	...
98	...
99	...
100	...

RUN 1		RUN 2	
SURFACE EQUIPMENT		SURFACE EQUIPMENT	
WITM (SHM)		WITM (SHM)	
DOWNHOLE EQUIPMENT		DOWNHOLE EQUIPMENT	
PEH-EF 3-3/8" PEH-EF 3-3/8" 1004		PEH-EF 3-3/8" PEH-EF 3-3/8" 1004	
AH-64 3-3/8" AH-64 3-3/8" 3004		AH-64 3-3/8"	
PGGT-D PGGC PGGH-D		PGGT-D 3-5/8" Gamma Ray PGGC PGGH-D	
AH-7.0" MaxR 5-3/4" AH-7.0" MaxR 5-3/4"		AH-7.0" MaxR 5-3/4" AH-7.0" MaxR 5-3/4"	
AH-Gun Redundant fill Sub 3-3/8" AH-Gun Redundant fill Sub 3-3/8"		AH-Gun Redundant fill Sub 3-3/8" AH-Gun Redundant fill Sub 3-3/8"	
5.21	1.07 TOOL ZERO	18.89 17.83 17.43 15.65 15.48 13.19 12.39 9.89	1.07 TOOL ZERO

AH-283 3-3/8"
AH-283 3-3/8" 5002

AH-Junk Basket 5-1/2"
AH-Junk Basket 5-1/2"

AH-Gauge Ring 5.925"
SHM_GUN

MAXIMUM STRING DIAMETER 6.00 IN
MEASUREMENTS RELATIVE TO TOOL ZERO
ALL LENGTHS IN METERS



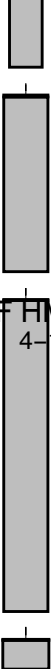
2.11
1.94

AH-Safety Spacer 4-1/2"
AH-Safety Spacer 4-1/2"

AH-4-1/2" 4512 PJ Omega 12 SPF HMX 4-1/2" OD
AH-4-1/2" 4512 PJ Omega 12 SPF HMX 4-1/2" OD

AH-Roller Bottom Nose 4-3/4"
SHM_GUN

MAXIMUM STRING DIAMETER 5.75 IN
MEASUREMENTS RELATIVE TO TOOL ZERO
ALL LENGTHS IN METERS



6.64
0.38
0.38
0.00

Production String	(in)		(m)	Well Schematic	(m)	(in)		Casing String
	OD	ID	MD		MD	OD	ID	
Derrick Floor Elevation Mean Sea Level			0.0					Surface Casing String Casing String Casing Shoe
			41.0		21.6	10.750 7.000		
					678.5	10.750		

[illegible]

Job Events Summary

MAXIS Field Log

Schlumberger Job Event Summary							
	Time	Elapsed Time	Depth (M)	File			
Log Pass (up)	15-Sep-2009 15:39	000:16	4550.1 - 4409.5	PERFO_007LUP			
Log Pass (up)	19-Sep-2009 7:44	000:05	4483.3 - 4432.6	PERFO_035LUP			
Log Pass (up)	19-Sep-2009 7:57	000:23	4480.3 - 4373.9	PERFO_037LUP			

Company: Esso Australia Pty Ltd Well: CBA F35

Output DLIS Files

DEFAULT PERFO_037LUP FN:36 PRODUCER 19-Sep-2009 07:57

OP System Version: 17C0-154

SHM_GUN 17C0-154 PGGT-D 17C0-154

PIP SUMMARY

Time Mark Every 60 S

Casing Collar Locator (CCL)

-19 (---- 1

Gamma Ray (GR)

(GAPI) 200

Tension (TENS)

10000 (LBF) 0

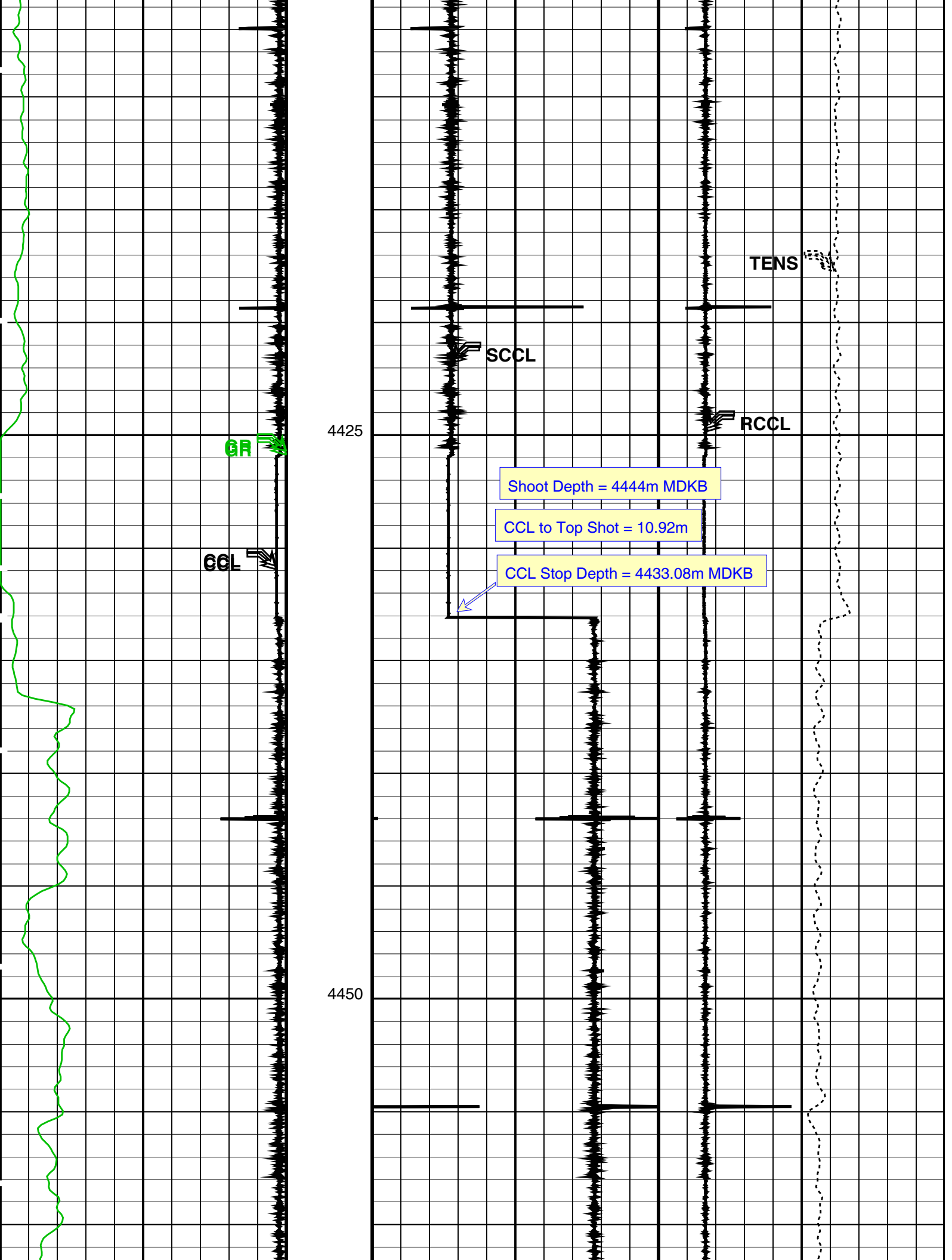
Shifted Casing Collar Locator (SCCL)

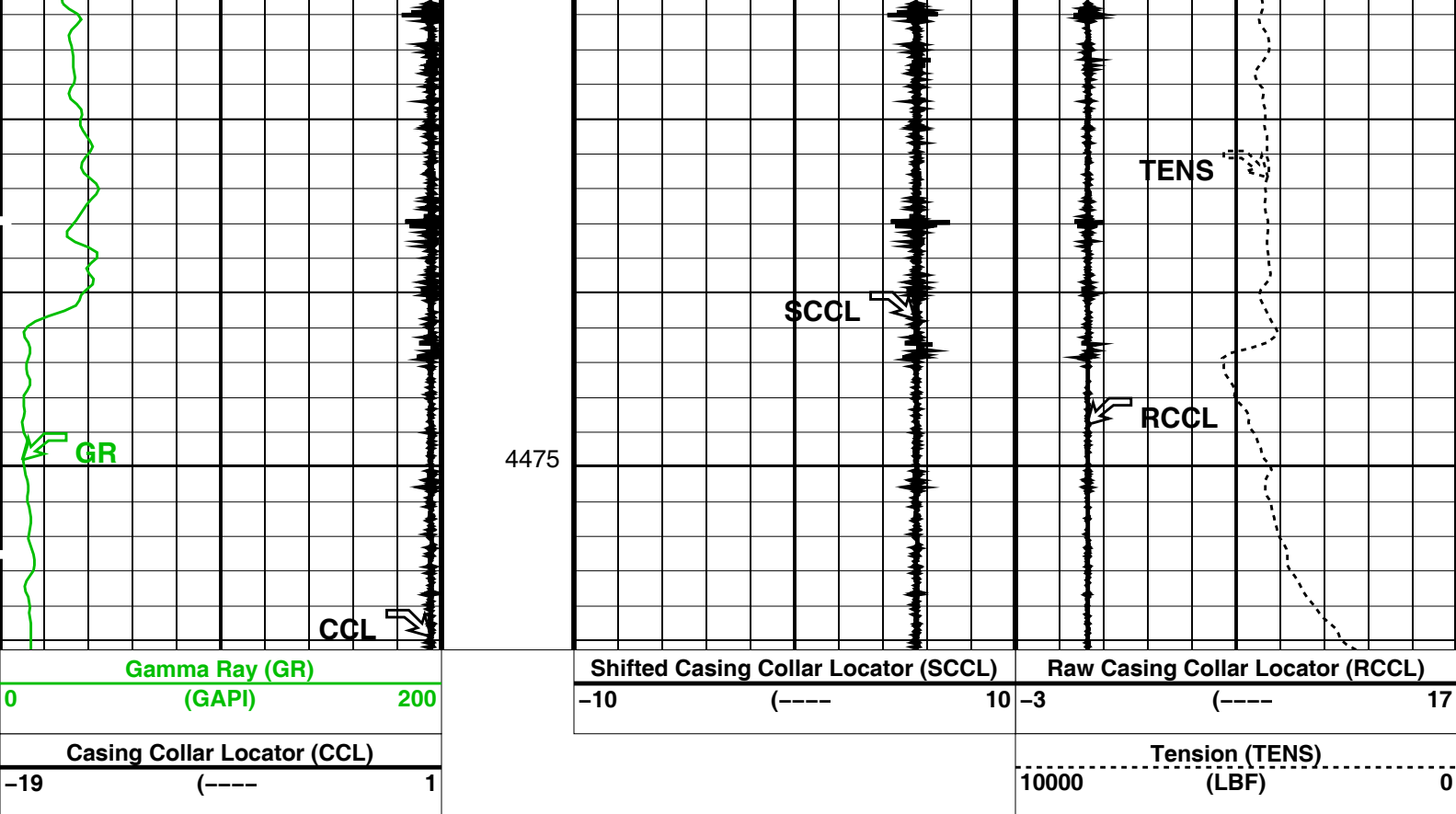
Raw Casing Collar Locator (RCCL)

-10 (---- 10 -3 (---- 17

4375

4400





PIP SUMMARY

Time Mark Every 60 S

Format: PERFO Vertical Scale: 1:200

Graphics File Created: 19-Sep-2009 07:57

OP System Version: 17C0-154

SHM_GUN 17C0-154 PGGT-D 17C0-154

Output DLIS Files

DEFAULT PERFO_037LUP FN:36 PRODUCER 19-Sep-2009 07:57

Schlumberger

Max-R Correlation Pass

MAXIS Field Log

Company: Esso Australia Pty Ltd

Well: CBA F35

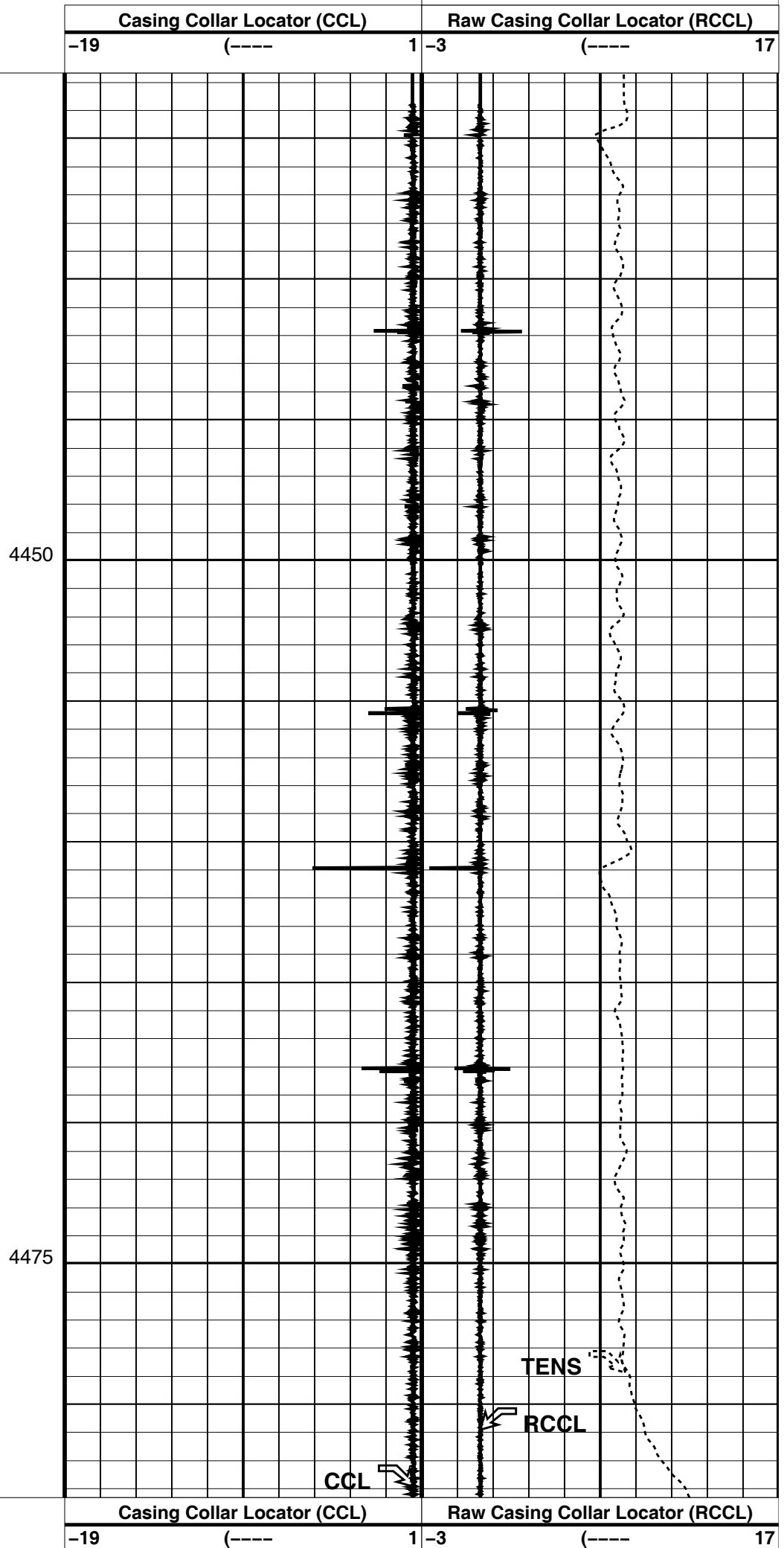
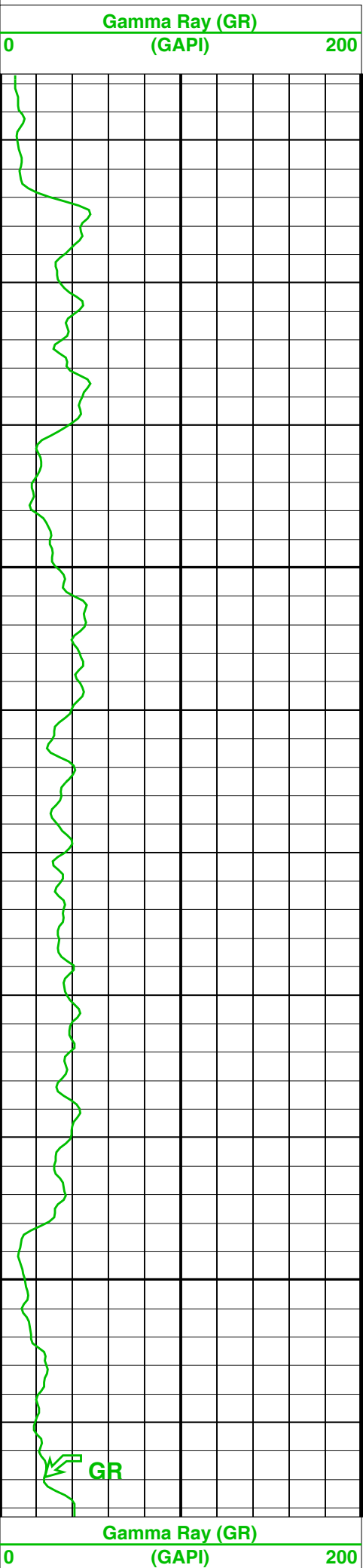
Output DLIS Files

DEFAULT PERFO_035LUP FN:34 PRODUCER 19-Sep-2009 07:44

OP System Version: 17C0-154

SHM_GUN 17C0-154 PGGT-D 17C0-154

Tension (TENS) (LBF) 10000 0



Format: CORRELATION Vertical Scale: 1:200 Graphics File Created: 19-Sep-2009 07:44

OP System Version: 17C0-154

SHM_GUN 17C0-154 PGGT-D 17C0-154

Output DLIS Files

DEFAULT PERFO_035LUP FN:34 PRODUCER 19-Sep-2009 07:44

Company: Esso Australia Pty Ltd Well: CBA F35

Input DLIS Files

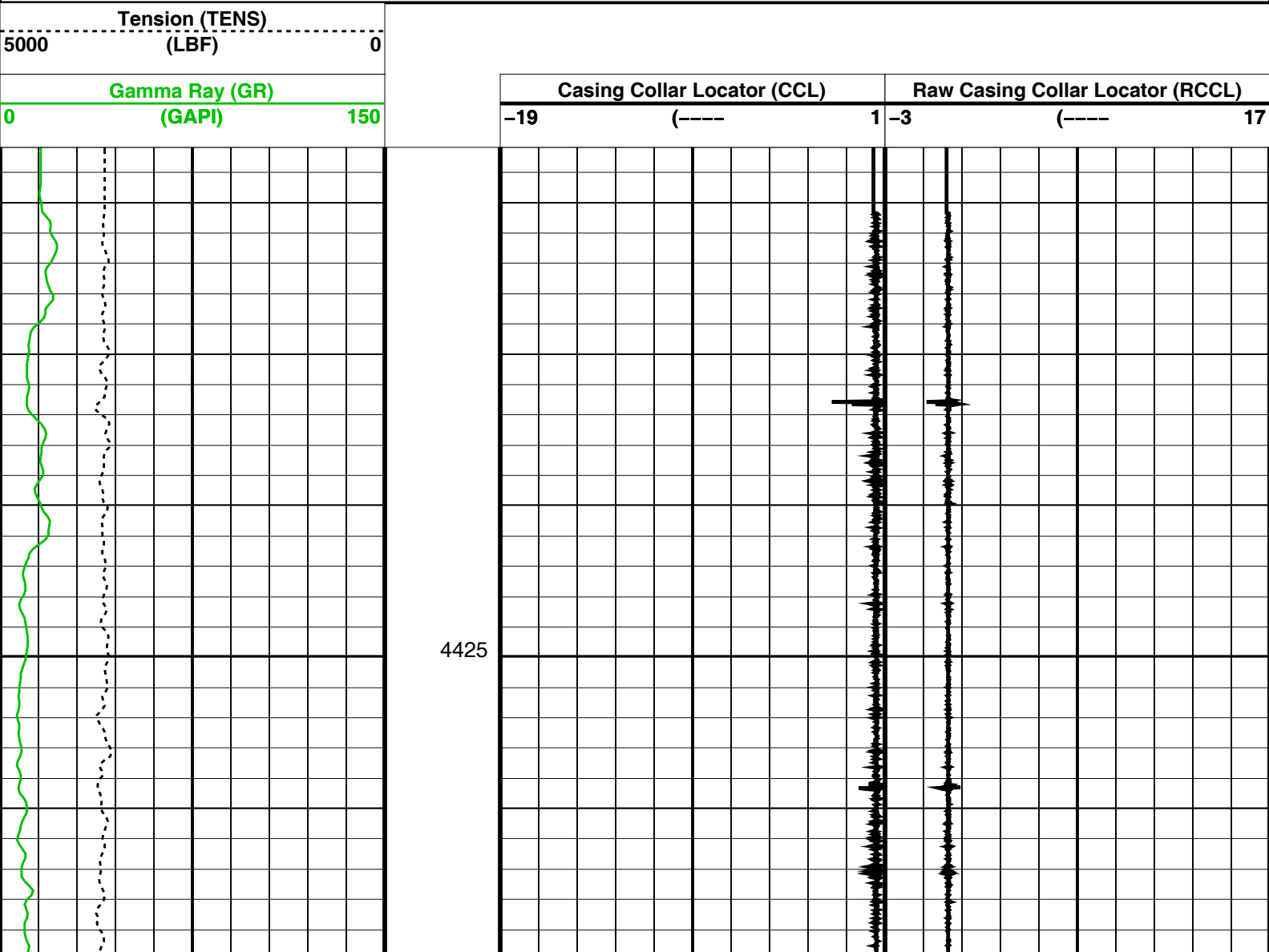
DEFAULT PERFO_007LUP FN:6 PRODUCER 15-Sep-2009 15:39 4550.1 M 4409.5 M

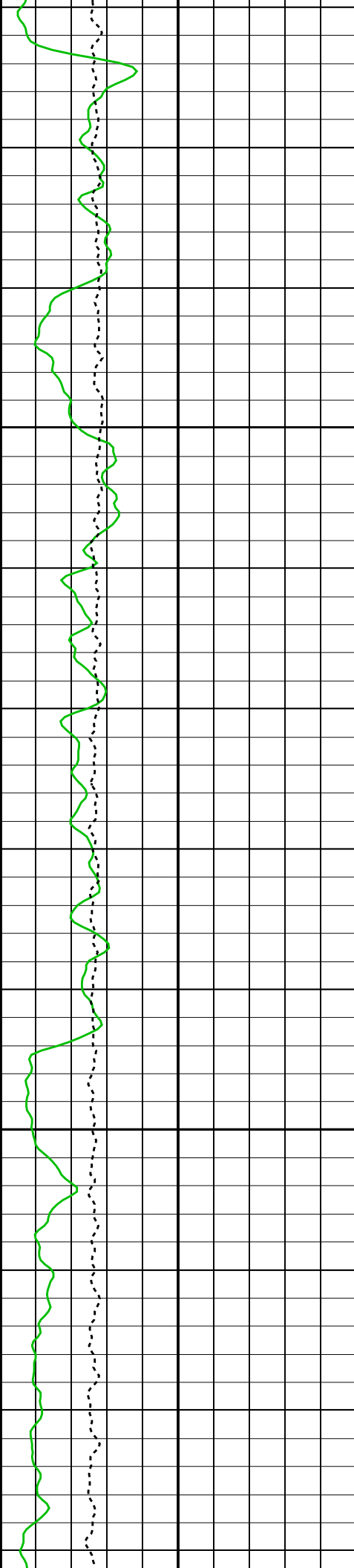
Output DLIS Files

DEFAULT PERFO_009PUP FN:8 PRODUCER 15-Sep-2009 16:01 4549.7 M 4408.0 M

OP System Version: 17C0-154

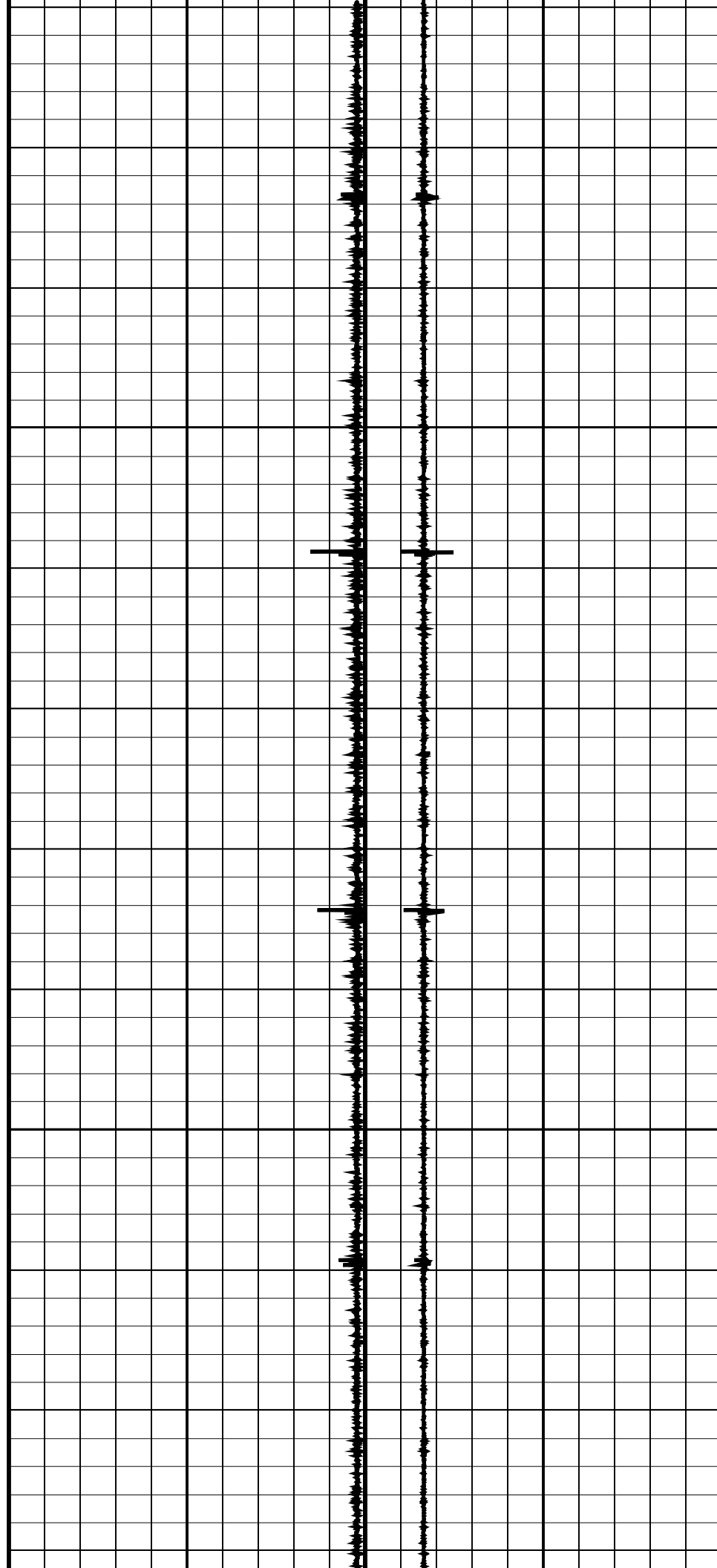
SHM_GUN 17C0-154 PGGT-D 17C0-154

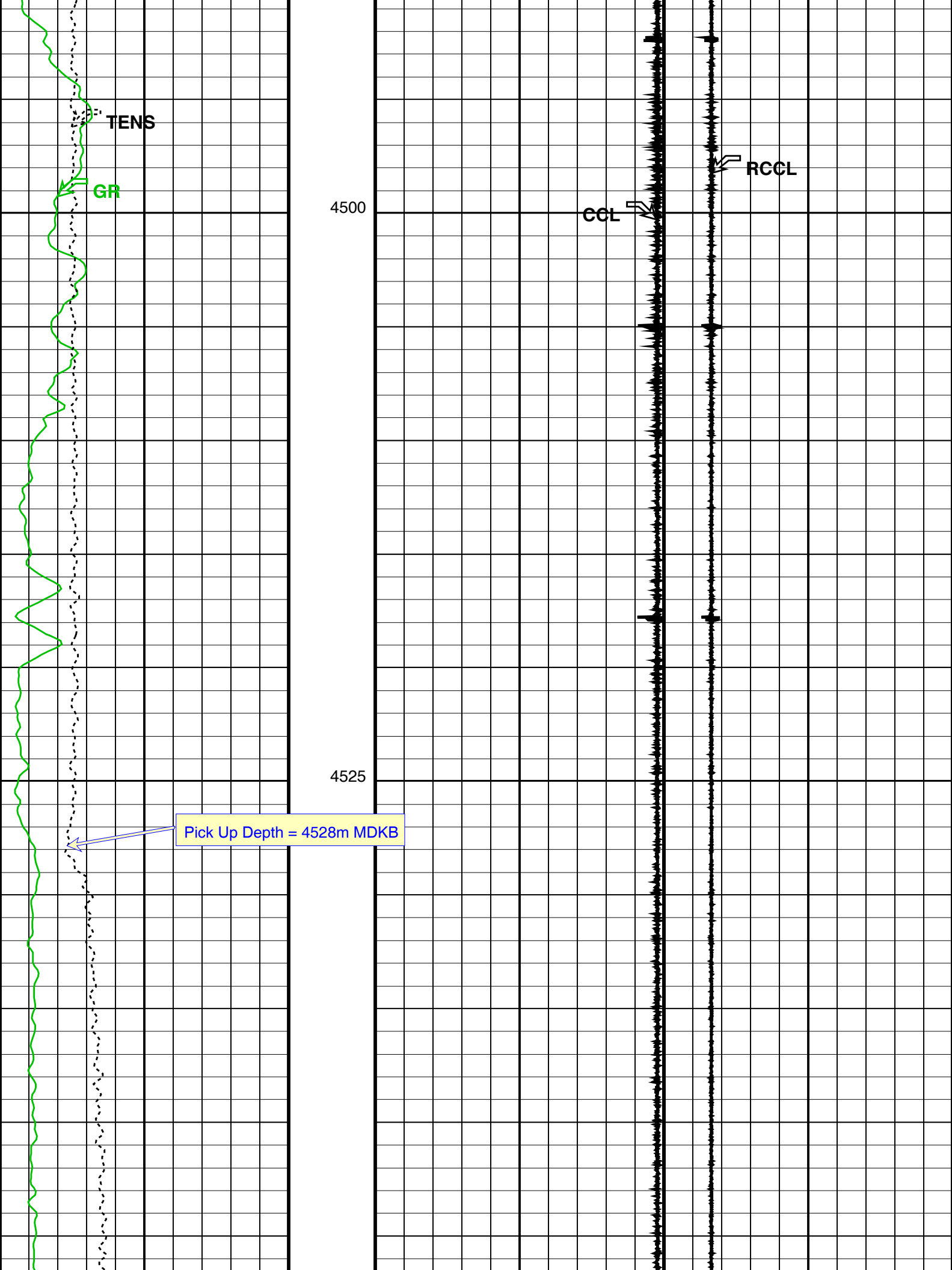


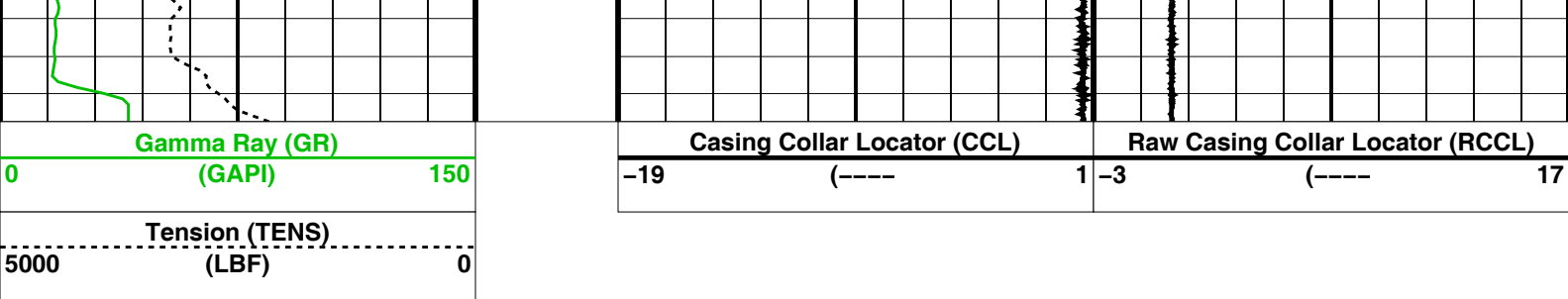


4450

4475








Parameters		
DLIS Name	Description	Value
DO	System and Miscellaneous	
PP	Depth Offset for Playback	-0.3 M
	Playback Processing	NORMAL
Format: CORRELATION Vertical Scale: 1:200 Graphics File Created: 15-Sep-2009 16:01		

OP System Version: 17C0-154					
SHM_GUN	17C0-154	PGGT-D	17C0-154		
Input DLIS Files					
DEFAULT	PERFO_007LUP	FN:6	PRODUCER	15-Sep-2009 15:39	4550.1 M 4409.5 M
Output DLIS Files					
DEFAULT	PERFO_009PUP	FN:8	PRODUCER	15-Sep-2009 16:01	



Junk Basket
Gauge Ring 5.92"

MAXIS Field Log

Company:	Esso Australia Pty Ltd	Schlumberger
Well:	CBA F35	
Field:	Cobia	
Rig:	Rig 175	
Country:	Australia	
Junk Basket with 6" Gauge Ring Max-R Setting Record 15-Sep-2009		