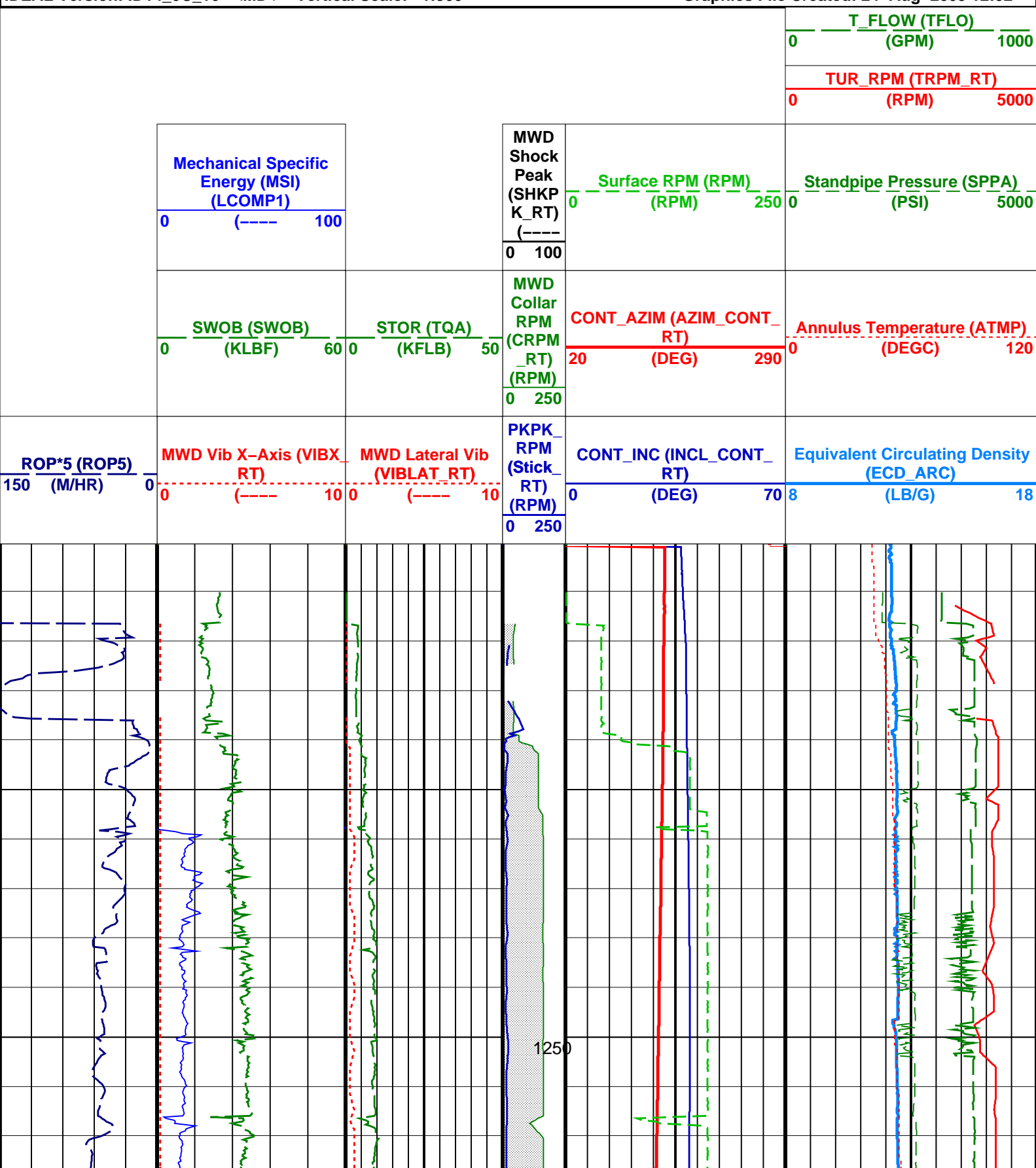
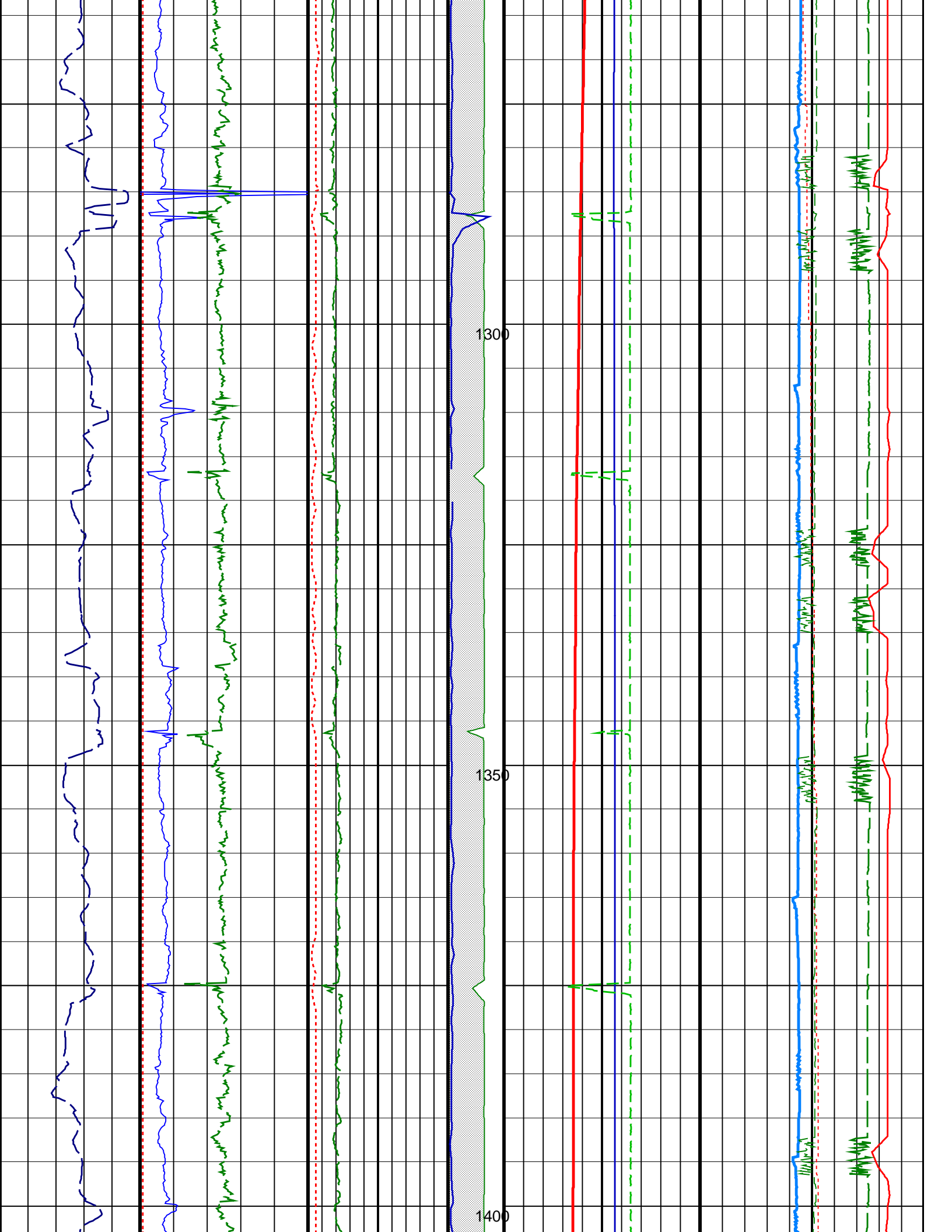


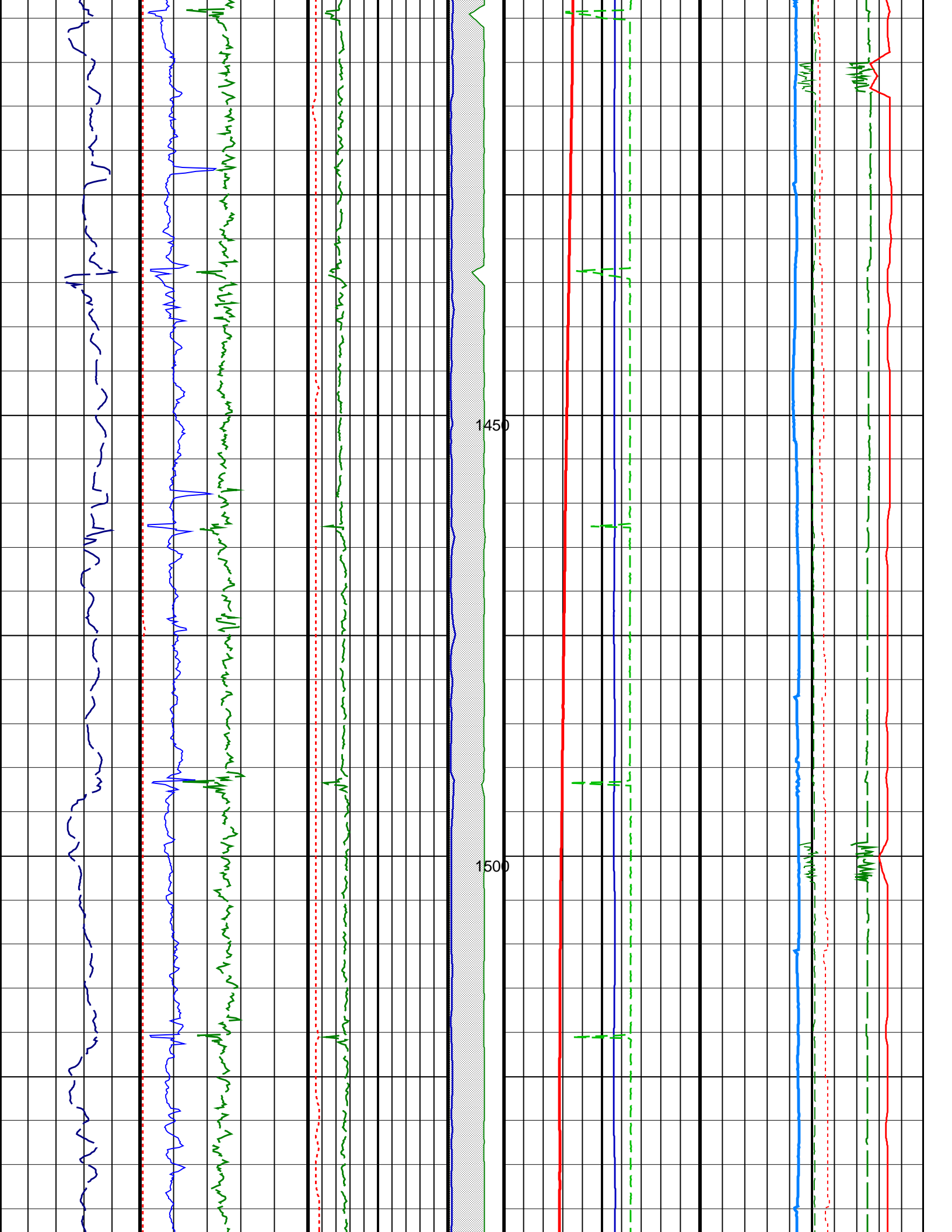
CBA A15B – Drilling Mechanics 500MD – Run #4

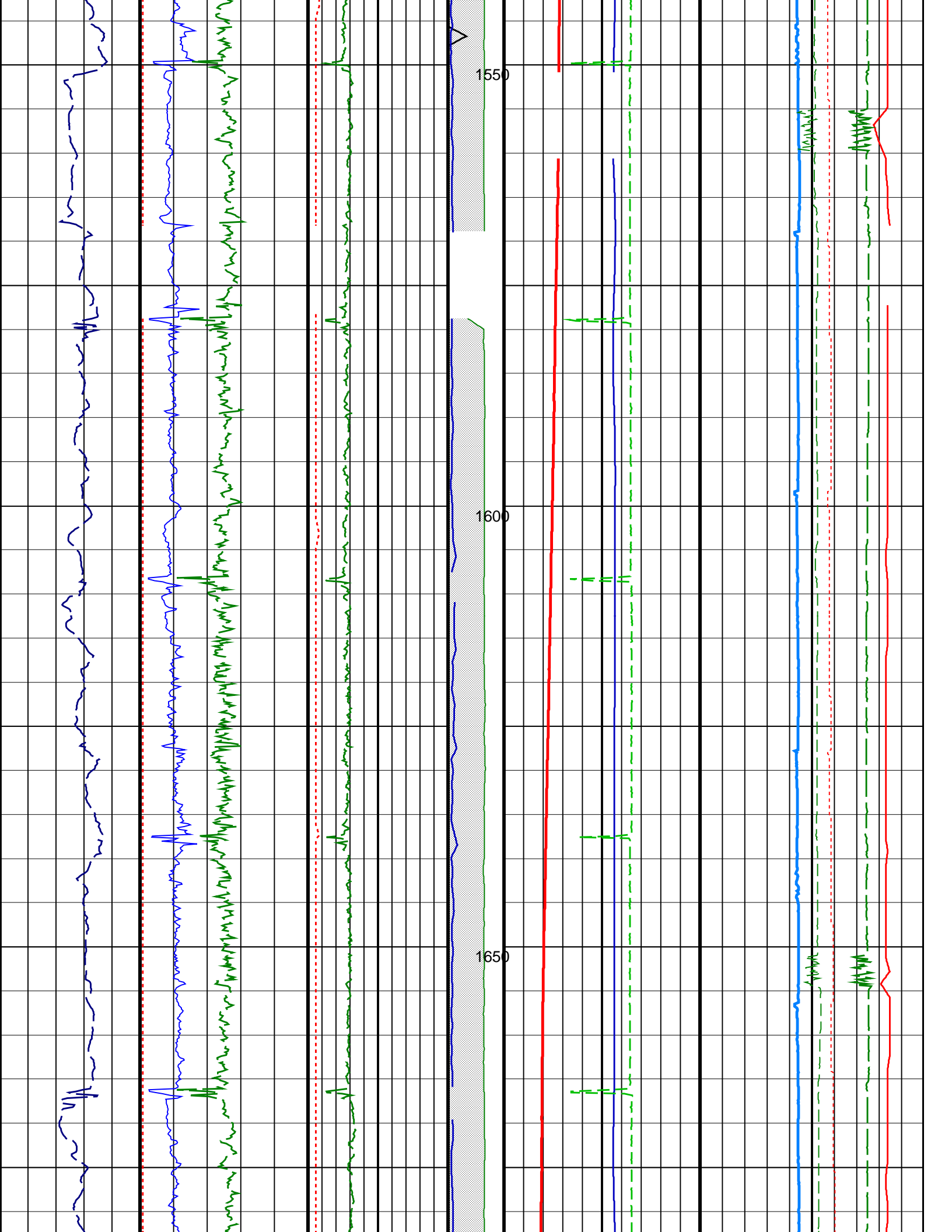
IDEAL Version: ID14_OC_16 <MD> Vertical Scale: 1:500

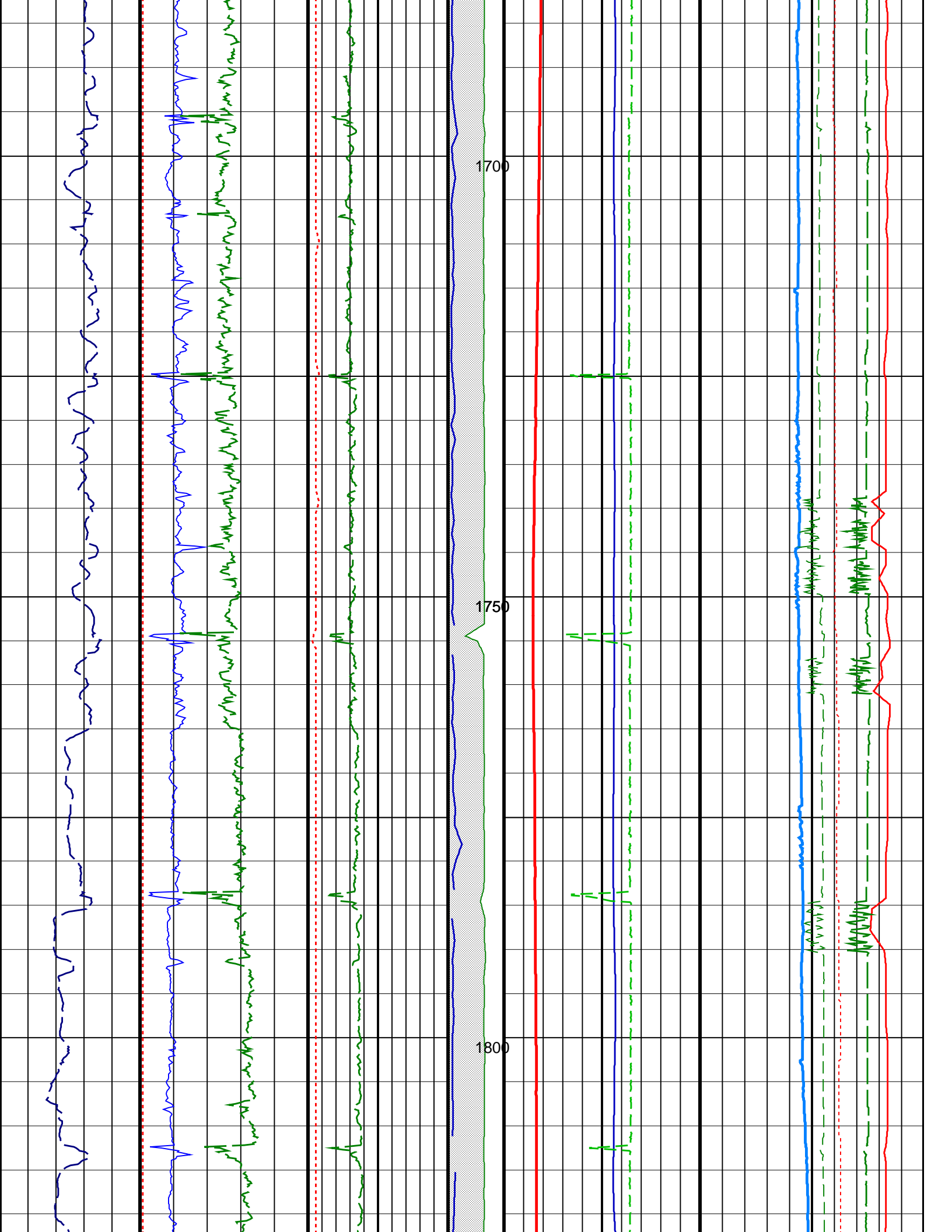
Graphics File Created: 24-Aug-2009 12:02

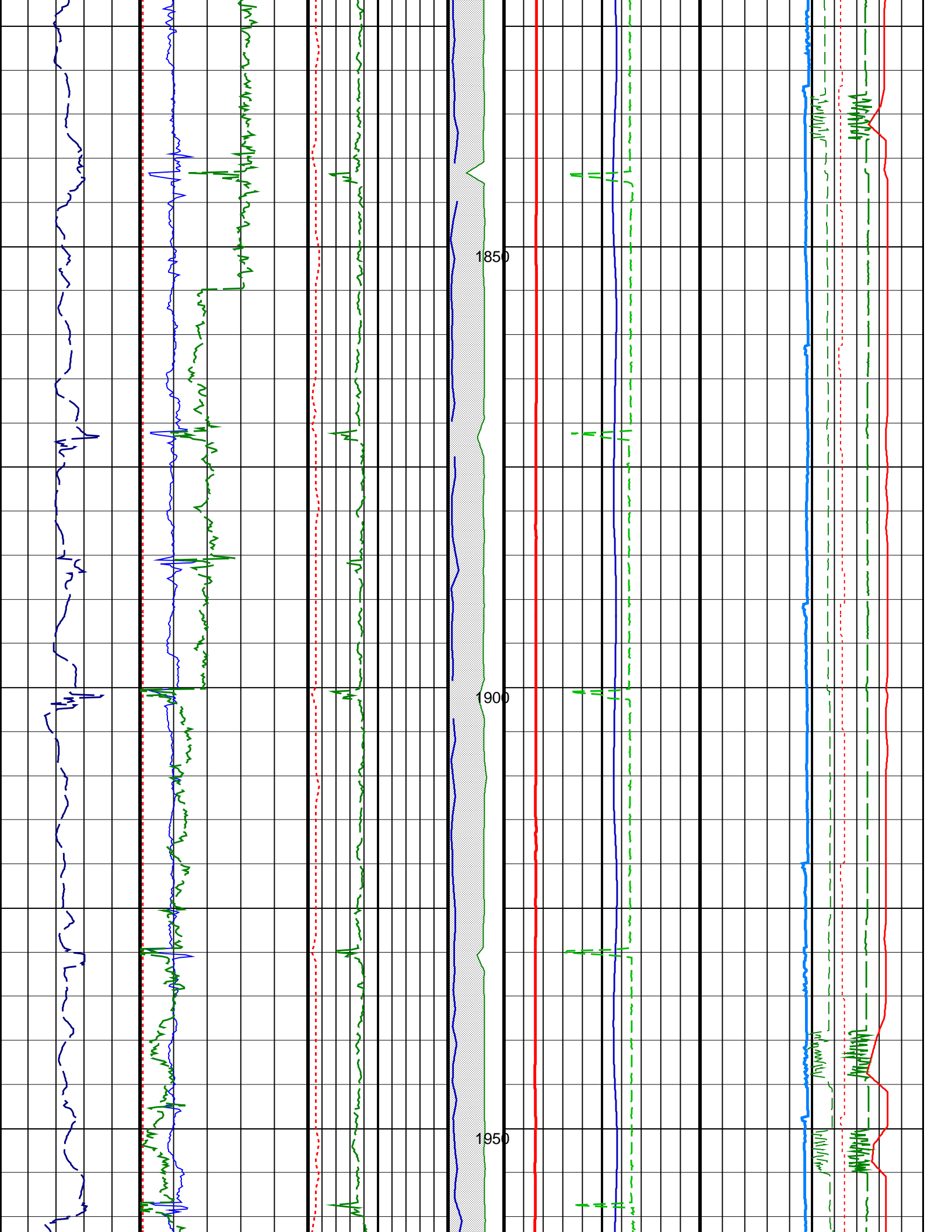


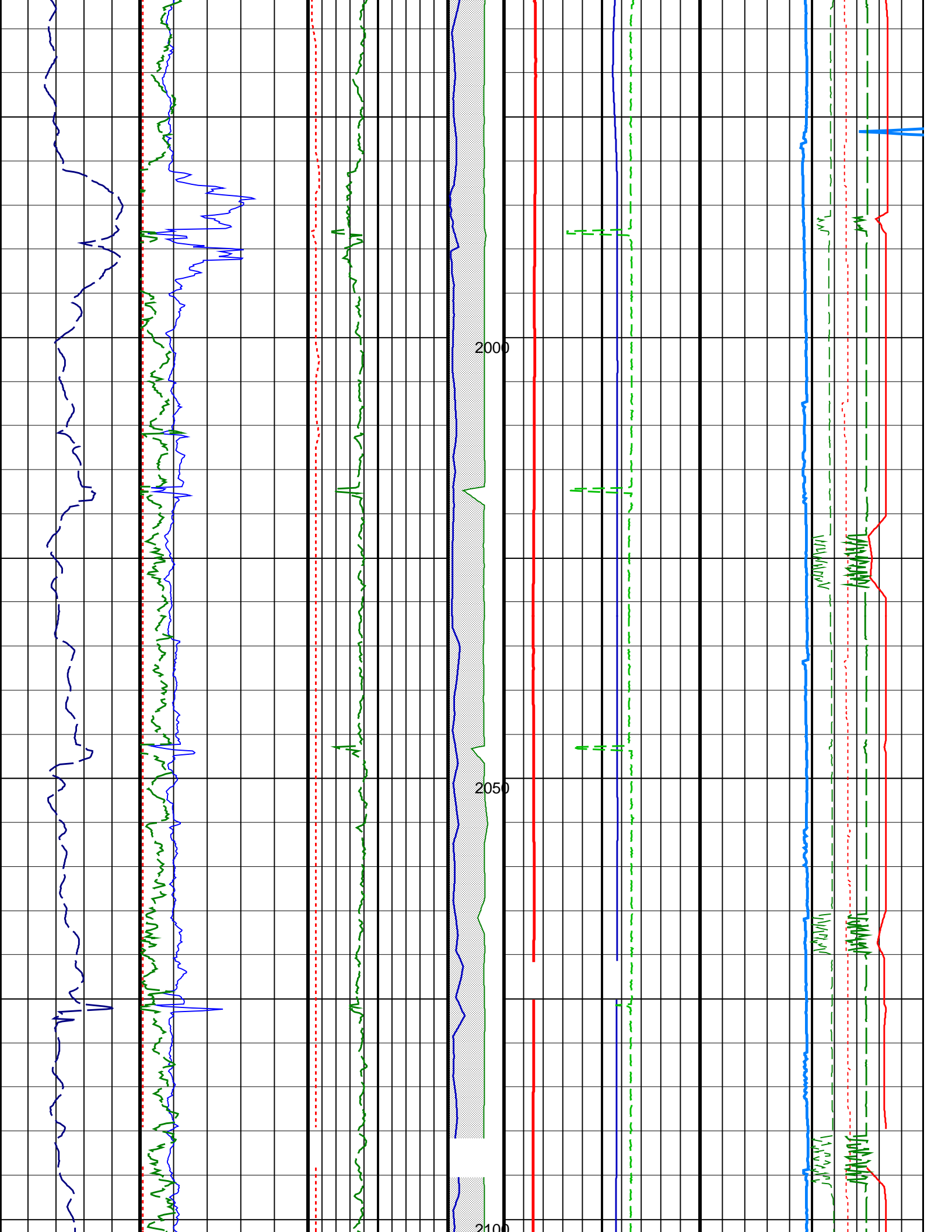


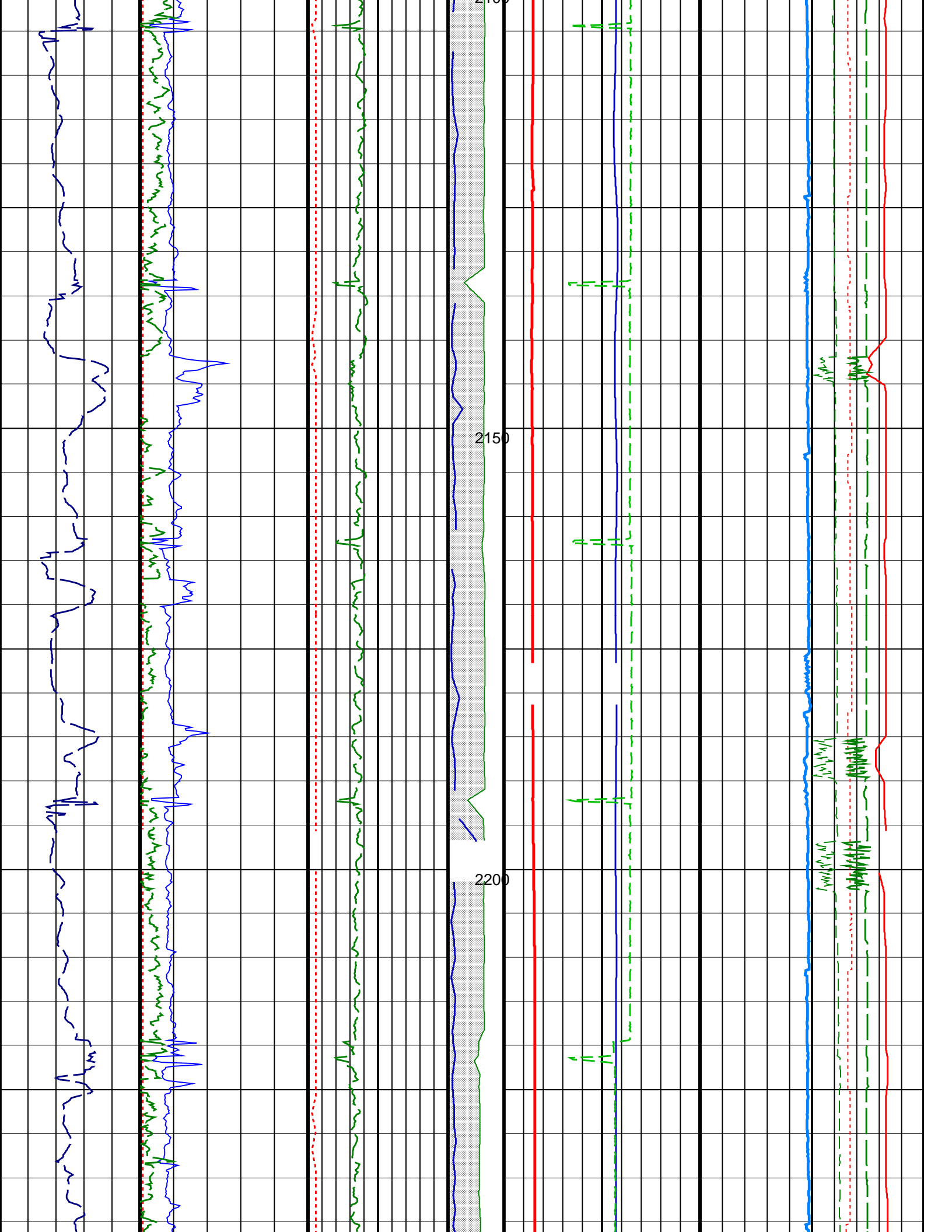


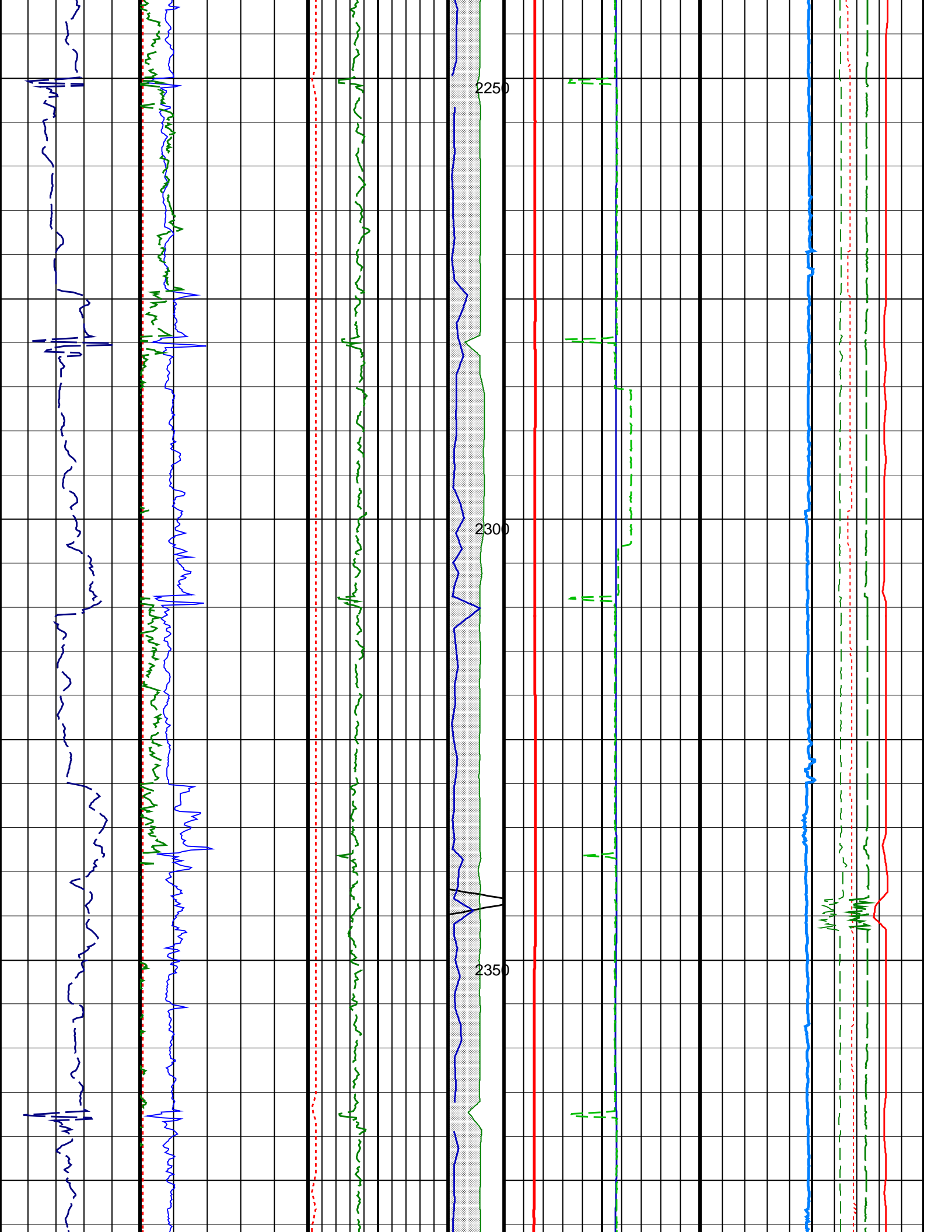


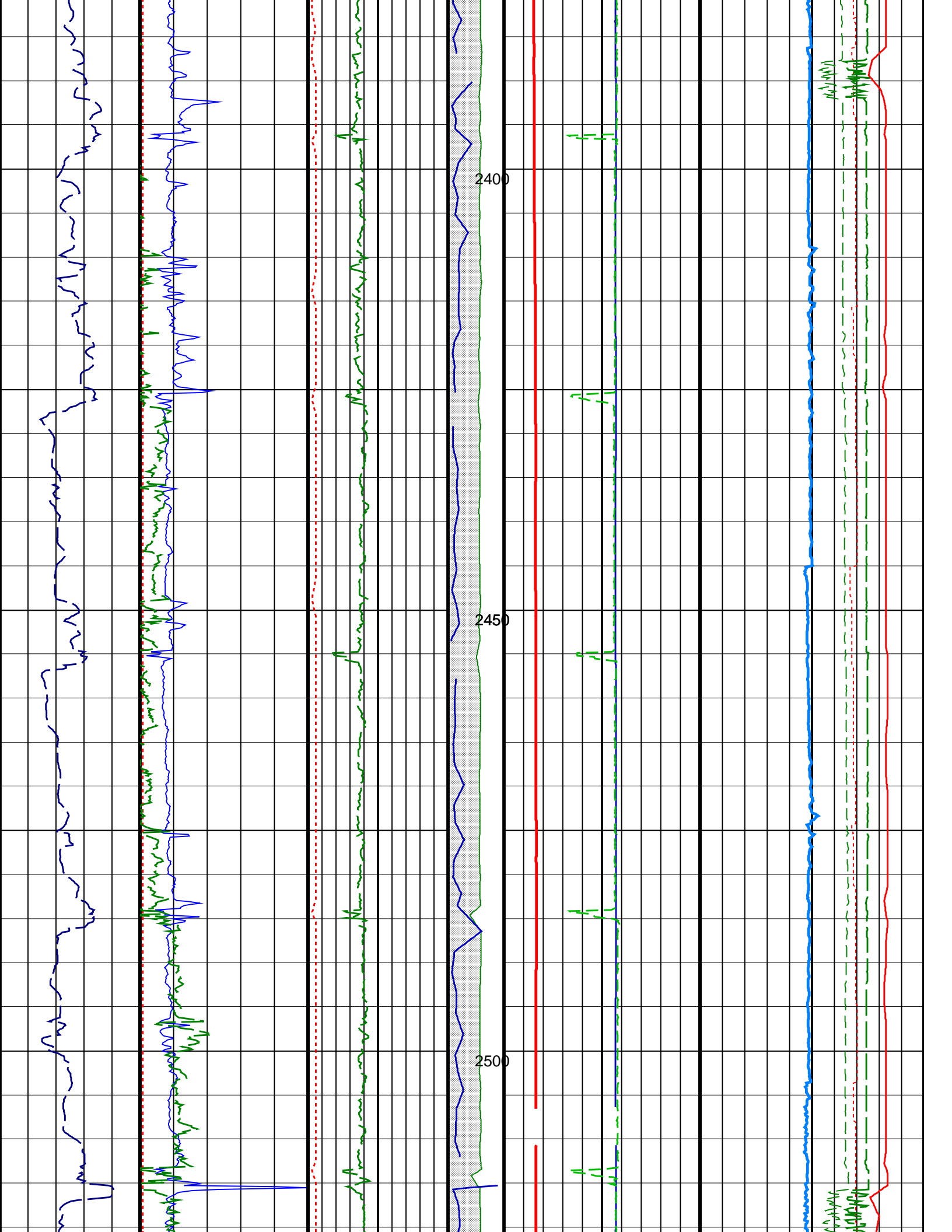


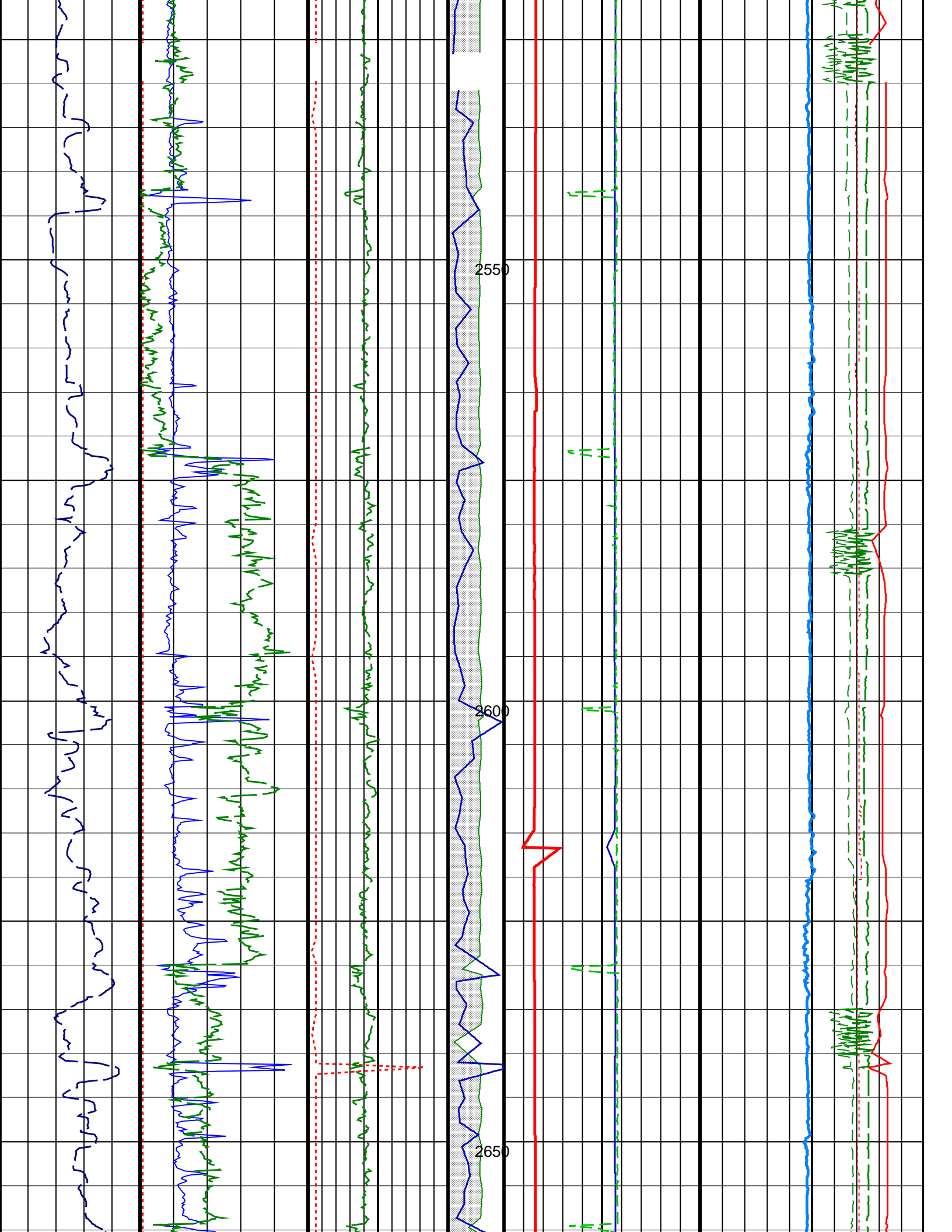


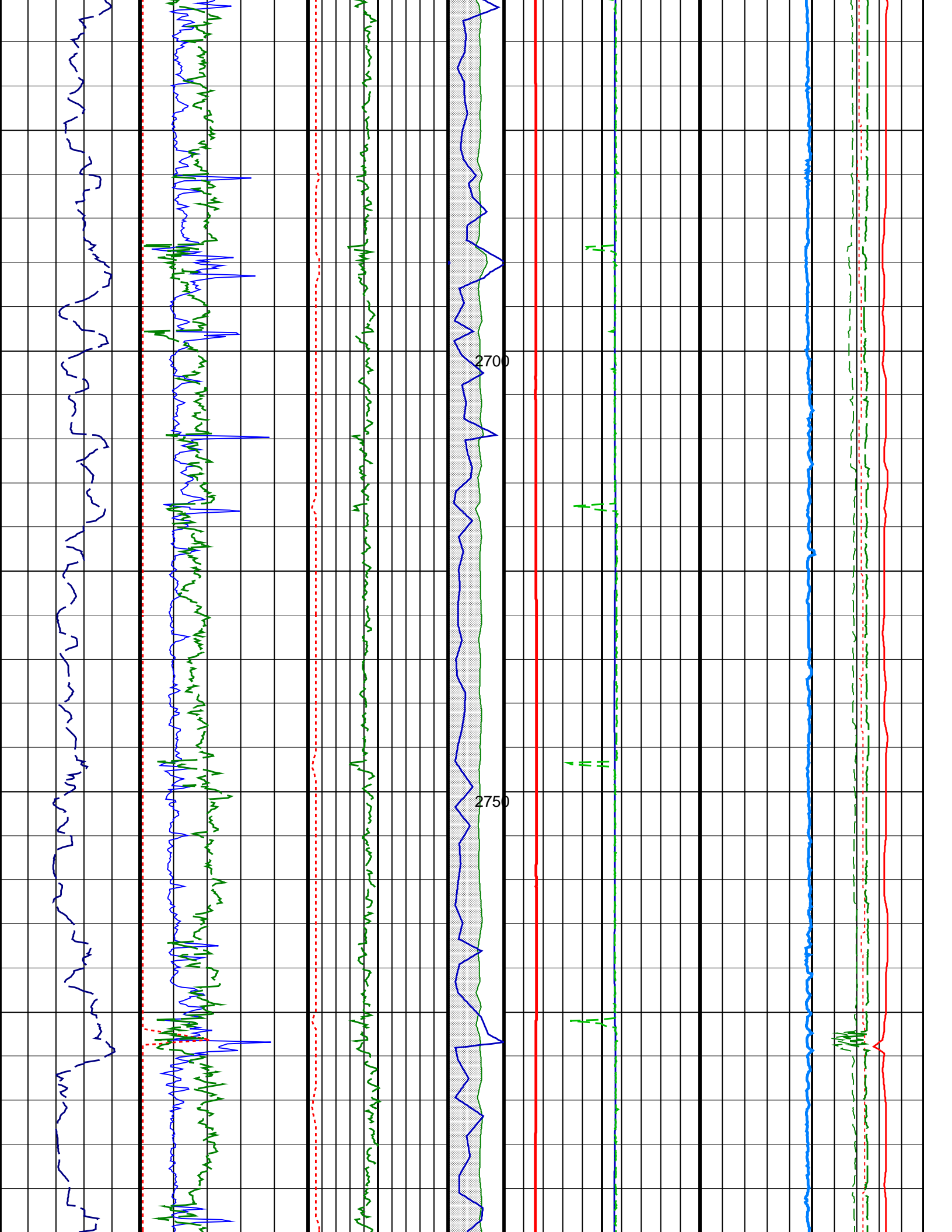


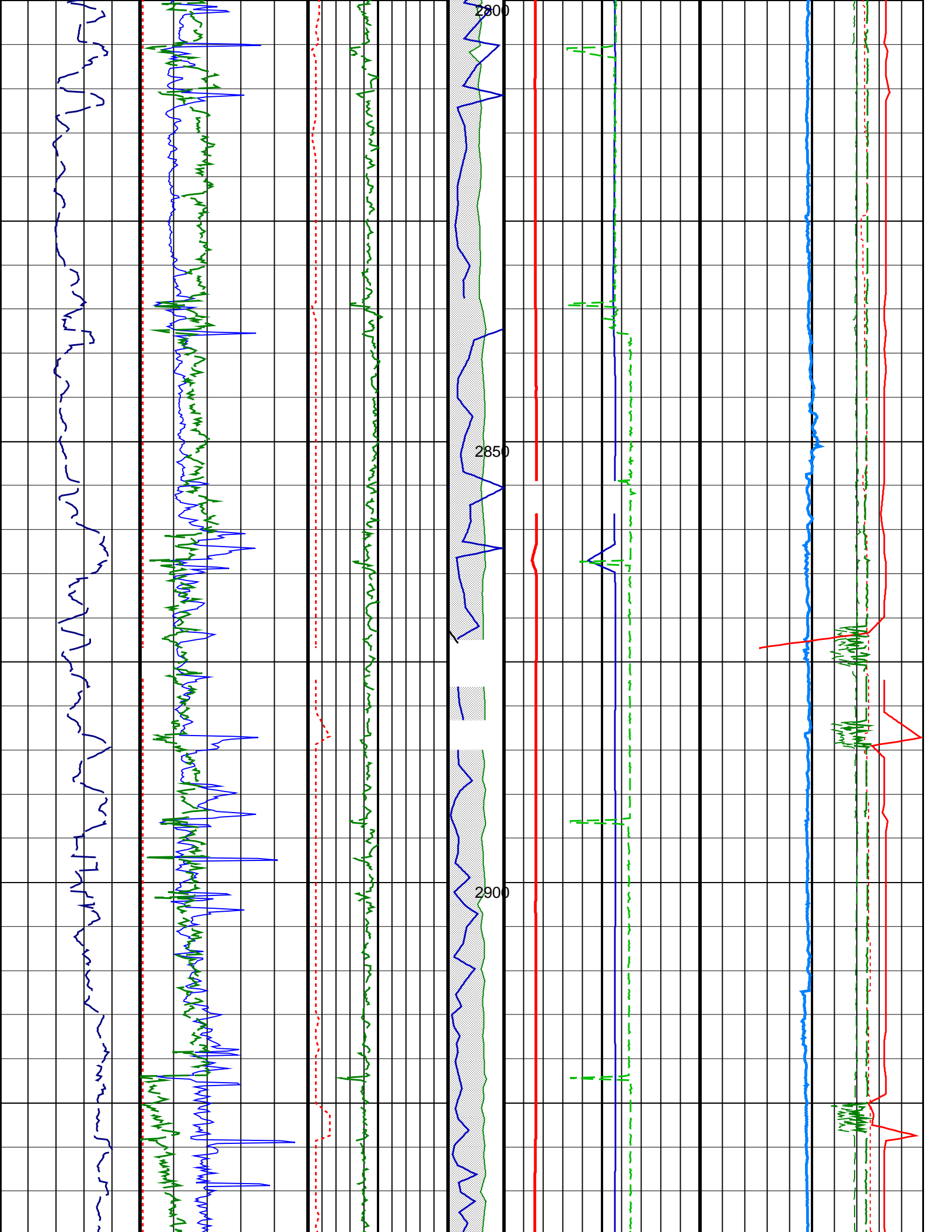


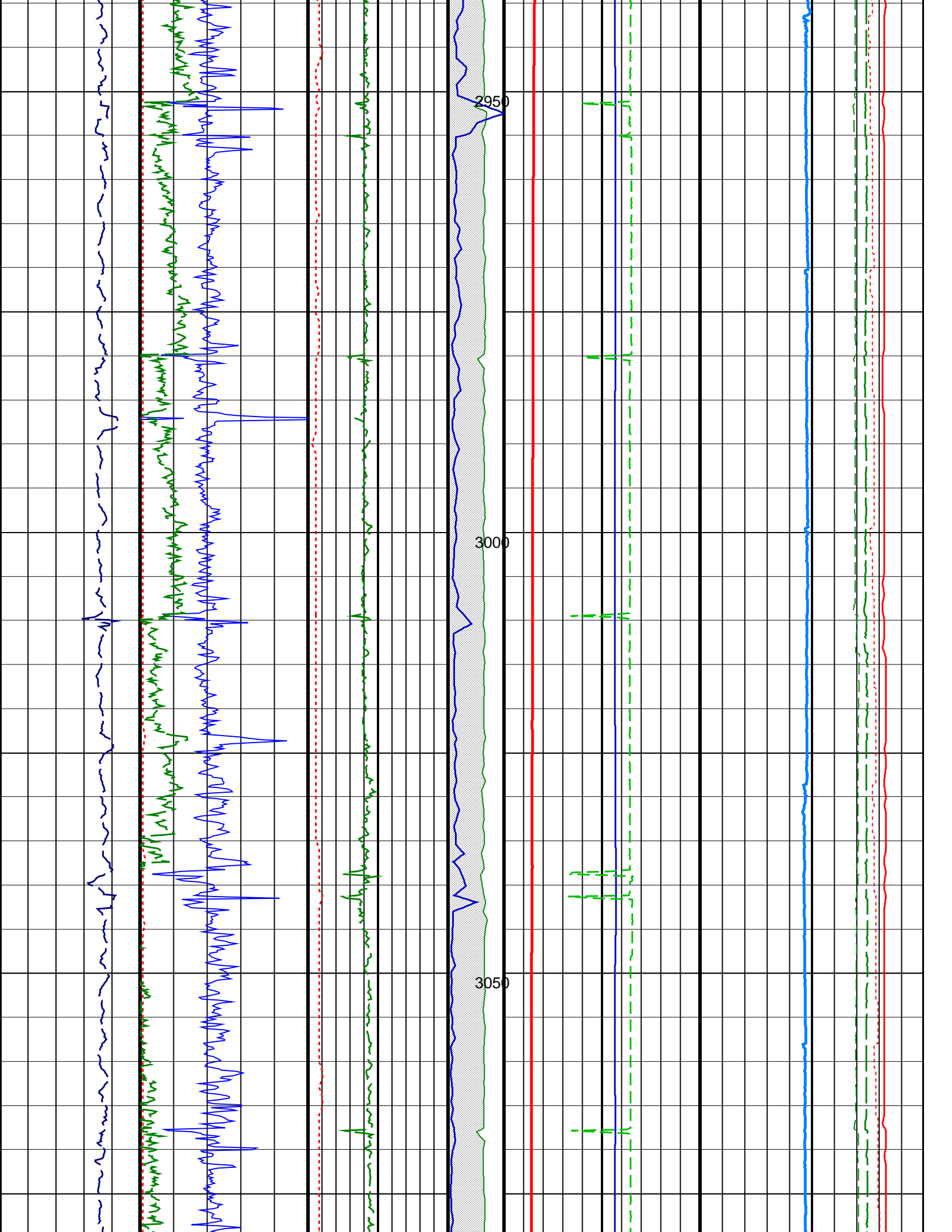


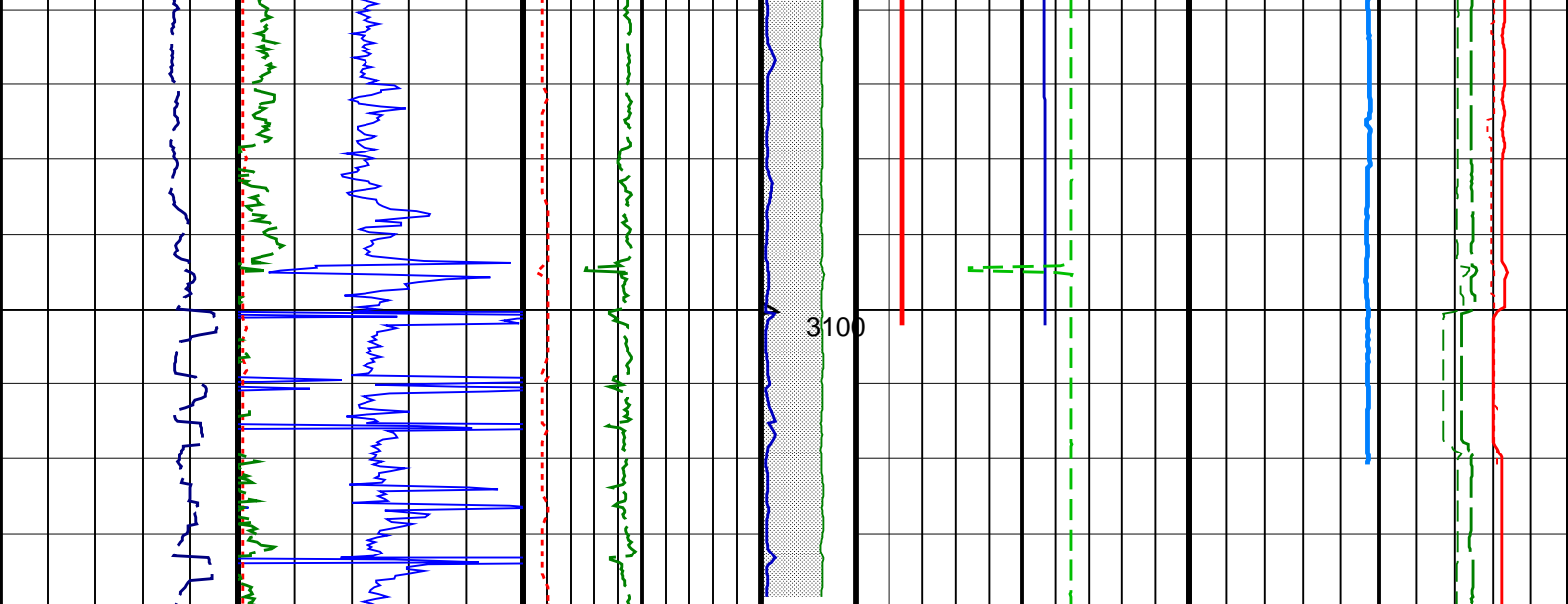












<div>ROP*5 (ROP5) (M/HR)</div> <div>1500</div>	<div>MWD Vib X-Axis (VIBX_RT) (----)</div> <div>010</div>	<div>MWD Lateral Vib (VIBLAT_RT) (----)</div> <div>010</div>	<div>PKPK RPM (Stick RT) (RPM)</div> <div>0250</div>	<div>CONT_INC (INCL_CONT_RT) (DEG)</div> <div>070</div>	<div>Equivalent Circulating Density (ECD_ARC) (LB/G)</div> <div>818</div>
	<div>SWOB (SWOB) (KLBF)</div> <div>060</div>	<div>STOR (TQA) (KFLB)</div> <div>050</div>	<div>MWD Collar RPM (CRPM_RT) (RPM)</div> <div>0250</div>	<div>CONT_AZIM (AZIM_CONT_RT) (DEG)</div> <div>20290</div>	<div>Annulus Temperature (ATMP) (DEGC)</div> <div>0120</div>
<div>Mechanical Specific Energy (MSI) (LCOMP1)</div> <div>0100</div>			<div>MWD Shock Peak (SHKP K_RT) (----)</div> <div>0100</div>	<div>Surface RPM (RPM)</div> <div>0250</div>	<div>Standpipe Pressure (SPPA) (PSI)</div> <div>05000</div>
					<div>TUR_RPM (TRPM_RT) (RPM)</div> <div>05000</div>
					<div>T_FLOW (TFLO) (GPM)</div> <div>01000</div>