

Schlumberger

Company: **Esso Australia Pty Ltd**

Well: **CBA A15B**

Field: **Cobia**

Rig: **Rig 175**

Country: **Australia**

|  |   |                                     |                               |  |
|--|---|-------------------------------------|-------------------------------|--|
| Rig: Rig 175<br>Field: Cobia<br>Location: Bass Strait<br>Well: CBA A15B<br>Company: Esso Australia Pty Ltd | Junk Basket with 6" Gauge Ring<br>Max-R Setting Record<br>25-Aug-2009 |                                     |                               |  |
|  | LOCATION  | Bass Strait<br>Gippsland            |                               | Elev.: K.B. 41.00 m<br>G.L. -79.00 m<br>D.F. 41.00 m       |
|  |   | Permanent Datum: MSL                |                               | Elev.: 0.00 m  |
|  |   | Log Measured From: Drill Floor      |                               | 41.00 m above Perm. Datum                                  |
|  |   | Drilling Measured From: Drill Floor |                               |  |
|  | State: Victoria   |                                     | Max. Well Deviation 51.58 deg | Longitude 148° 18' 32.995" E<br>Latitude 28° 26' 57.465" S |
| Logging Date   |   | 24-Aug-2009                         |                               |  |
| Run Number   |   | 2                                   |                               |  |
| Depth Driller  |   | 3116 m                              |                               |  |
| Schlumberger Depth   |   | 3075.5 m                            |                               |  |
| Bottom Log Interval  |   | 3075.5 m                            |                               |  |
| Top Log Interval   |   | 3034.5 m                            |                               |  |
| Casing Fluid Type  |   | Sea water                           |                               |  |
| Salinity   |   |                                     |                               |  |
| Density  |   | 8.55 lbm/gal                        |                               |  |
| Fluid Level  |   | 0 m                                 |                               |  |
| BIT/CASING/TUBING STRING   |   |                                     |                               |  |
| Bit Size   |   | 8.500 in                            |                               |  |
| From   |   | 655.7 m                             |                               |  |
| To   |   | 3116 m                              |                               |  |
| Casing/Tubing Size   |   | 7.000 in                            |                               |  |
| Weight   |   | 26 lbm/ft                           |                               |  |
| Grade  |   | L-80                                |                               |  |
| From   |   | 655.7 m                             |                               |  |
| To   |   | 3116 m                              |                               |  |
| Maximum Recorded Temperatures  |   |                                     |                               |  |
| Logger On Bottom   |   | Time                                | 24-Aug-2009                   | 2:40   |
| Unit Number  |   | Location                            | 3829                          | AUSL   |
| Recorded By  |   | M. Pratt, S. Gilbert                |                               |  |
| Witnessed By   |   | G. Doety, R. Moore                  |                               |  |

|                               |                          |           |       |   |
|-------------------------------|--------------------------|-----------|-------|---|
| PVT DATA                      | Oil Density              | Run 1     | Run 2 | R |
|                               | Water Salinity           |           |       |   |
|                               | Gas Gravity              |           |       |   |
|                               | Bo                       |           |       |   |
|                               | Bw                       |           |       |   |
|                               | 1/Bg                     |           |       |   |
|                               | Bubble Point Pressure    |           |       |   |
|                               | Bubble Point Temperature |           |       |   |
|                               | Solution GOR             |           |       |   |
|                               | Maximum Deviation        | 51.58 deg |       |   |
| CEMENTING DATA                |                          |           |       |   |
|                               | Primary/Squeeze          | Primary   |       |   |
|                               | Casing String No         |           |       |   |
|                               | Lead Cement Type         |           |       |   |
|                               | Volume                   |           |       |   |
|                               | Density                  |           |       |   |
|                               | Water Loss               |           |       |   |
|                               | Additives                |           |       |   |
|                               |                          |           |       |   |
|                               | Tail Cement Type         |           |       |   |
|                               | Volume                   |           |       |   |
|                               | Density                  |           |       |   |
|                               | Water Loss               |           |       |   |
|                               | Additives                |           |       |   |
|                               |                          |           |       |   |
|                               | Expected Cement Top      |           |       |   |
|                               |                          |           |       |   |
| Logging Date                  |                          |           |       |   |
| Run Number                    |                          |           |       |   |
| Depth Driller                 |                          |           |       |   |
| Schlumberger Depth            |                          |           |       |   |
| Bottom Log Interval           |                          |           |       |   |
| Top Log Interval              |                          |           |       |   |
| Casing Fluid Type             |                          |           |       |   |
| Salinity                      |                          |           |       |   |
| Density                       |                          |           |       |   |
| Fluid Level                   |                          |           |       |   |
| BIT/CASING/TUBING STRING      |                          |           |       |   |
| Bit Size                      |                          |           |       |   |
| From                          |                          |           |       |   |
| To                            |                          |           |       |   |
| Casing/Tubing Size            |                          |           |       |   |
| Weight                        |                          |           |       |   |
| Grade                         |                          |           |       |   |
| From                          |                          |           |       |   |
| To                            |                          |           |       |   |
| Maximum Recorded Temperatures |                          |           |       |   |
| Logger On Bottom              |                          | Time      |       |   |
| Unit Number                   |                          | Location  |       |   |
| Recorded By                   |                          |           |       |   |
| Witnessed By                  |                          |           |       |   |

DEPTH SUMMARY LISTING

Date Created: 26-AUG-2009 5:10:25

Depth System Equipment

| Depth Measuring Device    |            | Tension Device                |            | Logging Cable   |           |
|---------------------------|------------|-------------------------------|------------|---|-----------|
| Type:                     | IDW-E      | Type:                         | CMTD-B/A   | Type:   | 7-46ZV XS |
| Serial Number:            | 727        | Serial Number:                | 1173       | Serial Number:  | 708145    |
| Calibration Date:         | 08-May-209 | Calibration Date:             | 09-06-2009 | Length:   | 6656 M    |
| Calibrator Serial Number: | 30         | Calibrator Serial Number:     | 1173       | Conveyance Method: Wireline<br>Rig Type: Offshore Fixed |           |
| Calibration Cable Type:   | 7-46ZV XS  | Number of Calibration Points: | 10         |   |           |
| Wheel Correction 1:       | -1         | Calibration RMS:              | 693        |   |           |
| Wheel Correction 2:       | 0          | Calibration Peak Error:       | 1275       |   |           |

Depth Control Parameters

|                             |                       |
|-----------------------------|-----------------------|
| Log Sequence:               | First Log In the Well |
| Rig Up Length At Surface:   | 0.00 M                |
| Rig Up Length At Bottom:    | 0.00 M                |
| Rig Up Length Correction:   | 0.00 M                |
| Stretch Correction:         |                       |
| Tool Zero Check At Surface: | 0.00 M                |

Depth Control Remarks

|   |
|---|
| 1. IDW used as primary depth control  |
| 2. First log in well, Schlumberger depth control procedures applied         |
| 3. All logs zeroed at drill floor   |
| 4. Junk Basket correlated to LWD log PDF no PDS was available for this run. |
| 5. MaxR log correlated to LWD log dated 23-Aug-09 provided by client        |
| 6.  |

DISCLAIMER

THE USE OF AND RELIANCE UPON THIS RECORDED-DATA BY THE HEREIN NAMED COMPANY (AND ANY OF ITS AFFILIATES, PARTNERS, REPRESENTATIVES, AGENTS, CONSULTANTS AND EMPLOYEES) IS SUBJECT TO THE TERMS AND CONDITIONS AGREED UPON BETWEEN SCHLUMBERGER AND THE COMPANY, INCLUDING: (a) RESTRICTIONS ON USE OF THE RECORDED-DATA; (b) DISCLAIMERS AND WAIVERS OF WARRANTIES AND REPRESENTATIONS REGARDING COMPANY'S USE OF AND RELIANCE UPON THE RECORDED-DATA; AND (c) CUSTOMER'S FULL AND SOLE RESPONSIBILITY FOR ANY INFERENCE DRAWN OR DECISION MADE IN CONNECTION WITH THE USE OF THIS RECORDED-DATA.








|  |                       |
|--|-----------------------|
| OTHER SERVICES1  | OTHER SERVICES2       |
| OS1: None  | OS1:                  |
| OS2:   | OS2:                  |
| OS3:   | OS3:                  |
| OS4:   | OS4:                  |
| OS5:   | OS5:                  |
| REMARKS: RUN NUMBER 1  | REMARKS: RUN NUMBER 2 |
| Log correlated to Schlumberger LWD log provided by client                      |                       |
| Objective: RIH with Junk Basket & 6" Guage ring to HUD, ensure access forMax-R |                       |
| RIH and set a Max-R with loaded with 3m of 4.5" 12spf Powerjet Omega .         |                       |
| Maximum Well deviation = 51.18deg @ 647m MDKB                                  |                       |
| Junk Basket correlated using LWD PDF, no PDS available from client for JB run. |                       |
| LWD log provided by client for MaxR run  |                       |

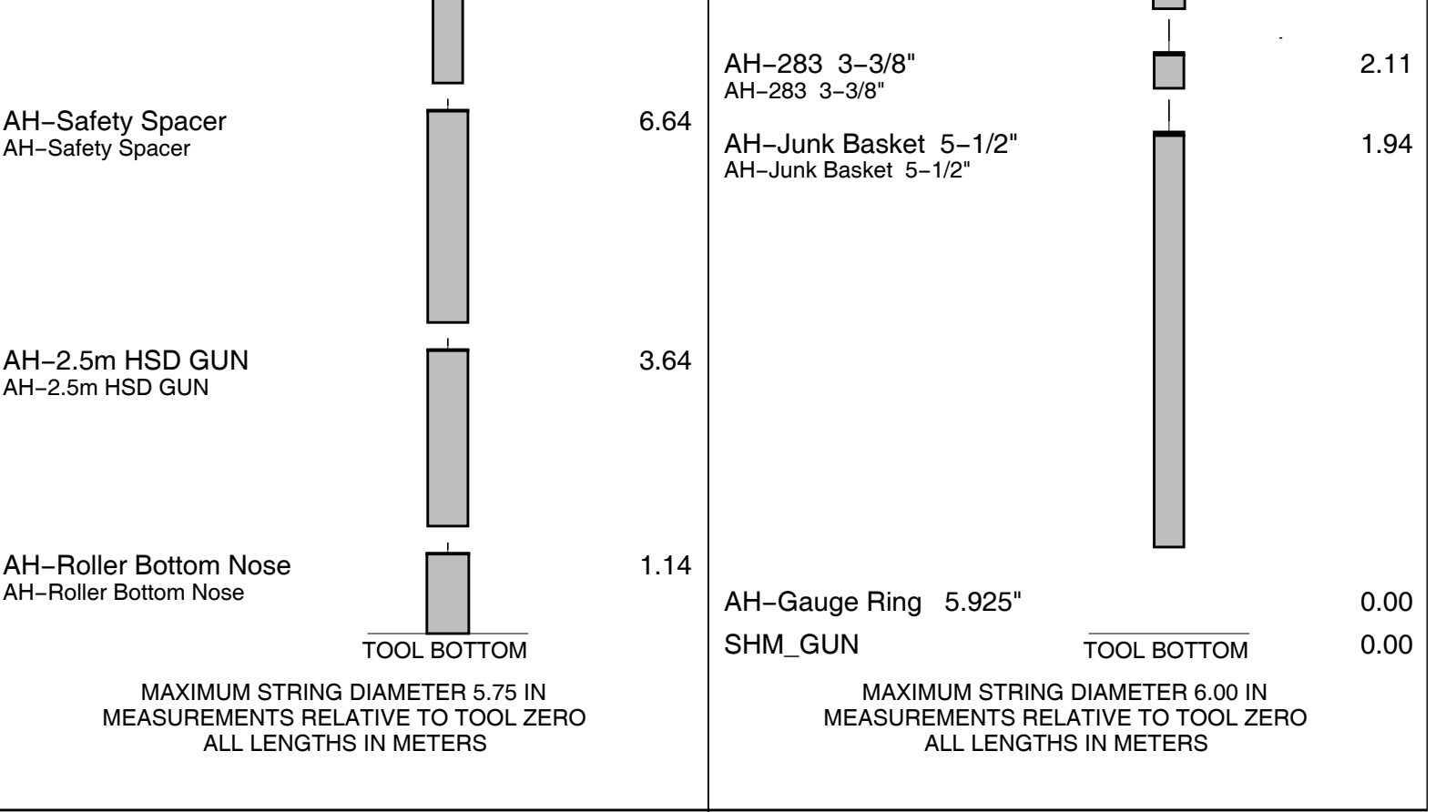
|   |
|---|
| HUD tagged @ 3075.5m MDKB with Junk Basket                    |
| CCL to Bottom Of Junk Basket = 2.52m                          |
| Gun 1: Top shot 3034.5m–3037m MDKB                            |
| CCL to Top Shot= 11.66m                                       |
| CCL stop Depth = 3022.84m MDKB                                |
|   |
|   |
|   |
| Schlumberger crew:  |
| Day's: J Annear , A Mclellan – Nights: B. Glover, M. Hancock, |

| RUN 1            |       |            | RUN 2            |       |      |
|------------------|-------|------------|------------------|-------|------|
| SERVICE ORDER #: |       | 4500585638 | SERVICE ORDER #: |       |      |
| PROGRAM VERSION: |       | 17C0–154   | PROGRAM VERSION: |       |      |
| FLUID LEVEL:     |       | 0 m        | FLUID LEVEL:     |       |      |
| LOGGED INTERVAL  | START | STOP       | LOGGED INTERVAL  | START | STOP |
|                  |       |            |                  |       |      |
|                  |       |            |                  |       |      |
|                  |       |            |                  |       |      |
|                  |       |            |                  |       |      |

| EQUIPMENT DESCRIPTION |  |  |       |  |  |
|-----------------------|--|--|-------|--|--|
| RUN 1                 |  |  | RUN 2 |  |  |

| SURFACE EQUIPMENT |  |  | SURFACE EQUIPMENT |  |  |
|-------------------|--|--|-------------------|--|--|
| WITM (SHM)        |  |  | WITM (SHM)        |  |  |

| DOWNHOLE EQUIPMENT      |   |           | DOWNHOLE EQUIPMENT |  |  |
|-------------------------|---|-----------|--------------------|--|--|
| PEH-EF 3–3/8"           |  | 19.06     |                    |  |  |
| PEH-EF 3–3/8"           |   |           |                    |  |  |
| AH-64 3–3/8"            |  | 18.00     |                    |  |  |
| PGGT–D                  | Gamma Ray   | — 1.07    |                    |  |  |
| PGGC                    |   |           |                    |  |  |
| PGGH–D                  |   |           |                    |  |  |
|                         | Casing Co   | TOOL ZERO |                    |  |  |
|                         | Tension   |           |                    |  |  |
|                         |   |           |                    |  |  |
| AH-283                  |  | 15.96     |                    |  |  |
| AH-CPST                 |  | 15.79     |                    |  |  |
| AH-CPST                 |   |           |                    |  |  |
|                         |   |           |                    |  |  |
| AH-Max–R Setting Sleeve |  | 13.69     |                    |  |  |
| AH-Max–R Setting Sleeve |   |           |                    |  |  |
|                         |   |           |                    |  |  |
| AH-7" Max–R             |  | 12.89     |                    |  |  |
| AH-7" Max–R             |   |           |                    |  |  |
|                         |   |           |                    |  |  |
| SHM_GUN                 |  | 10.39     |                    |  |  |
| GUN–Redundant fill sub  |   |           |                    |  |  |
|                         |   |           |                    |  |  |



| Production String | (in) |    | (m) | Well Schematic | (m)   | (in)            |    | Casing String                  |
|-------------------|------|----|-----|----------------|-------|-----------------|----|--------------------------------|
|                   | OD   | ID | MD  |                | MD    | OD              | ID |                                |
|                   |      |    |     |                |       | 10.750<br>7.000 |    | Casing String<br>Casing String |
|                   |      |    |     |                | 655.7 | 10.750          |    | Casing Shoe                    |

[illegible]

## Job Events Summary

MAXIS Field Log

| Schlumberger Job Event Summary |                  |                 |                 |              |  |  |  |
|--------------------------------|------------------|-----------------|-----------------|--------------|--|--|--|
|                                | Time             | Elapsed<br>Time | Depth<br>(M)    | File         |  |  |  |
| Log Pass (up)                  | 25-Aug-2009 3:27 | 000:07          | 3077.1 - 3007.2 | PERFO_018LUP |  |  |  |
| Log Pass (up)                  | 26-Aug-2009 1:53 | 000:05          | 3052.7 - 3008.4 | PERFO_034LUP |  |  |  |
| Log Pass (up)                  | 26-Aug-2009 2:01 | 000:11          | 3053.9 - 2997.7 | PERFO_035LUP |  |  |  |

Company: Esso Australia Pty Ltd

Well: CBA A28

## Output DLIS Files

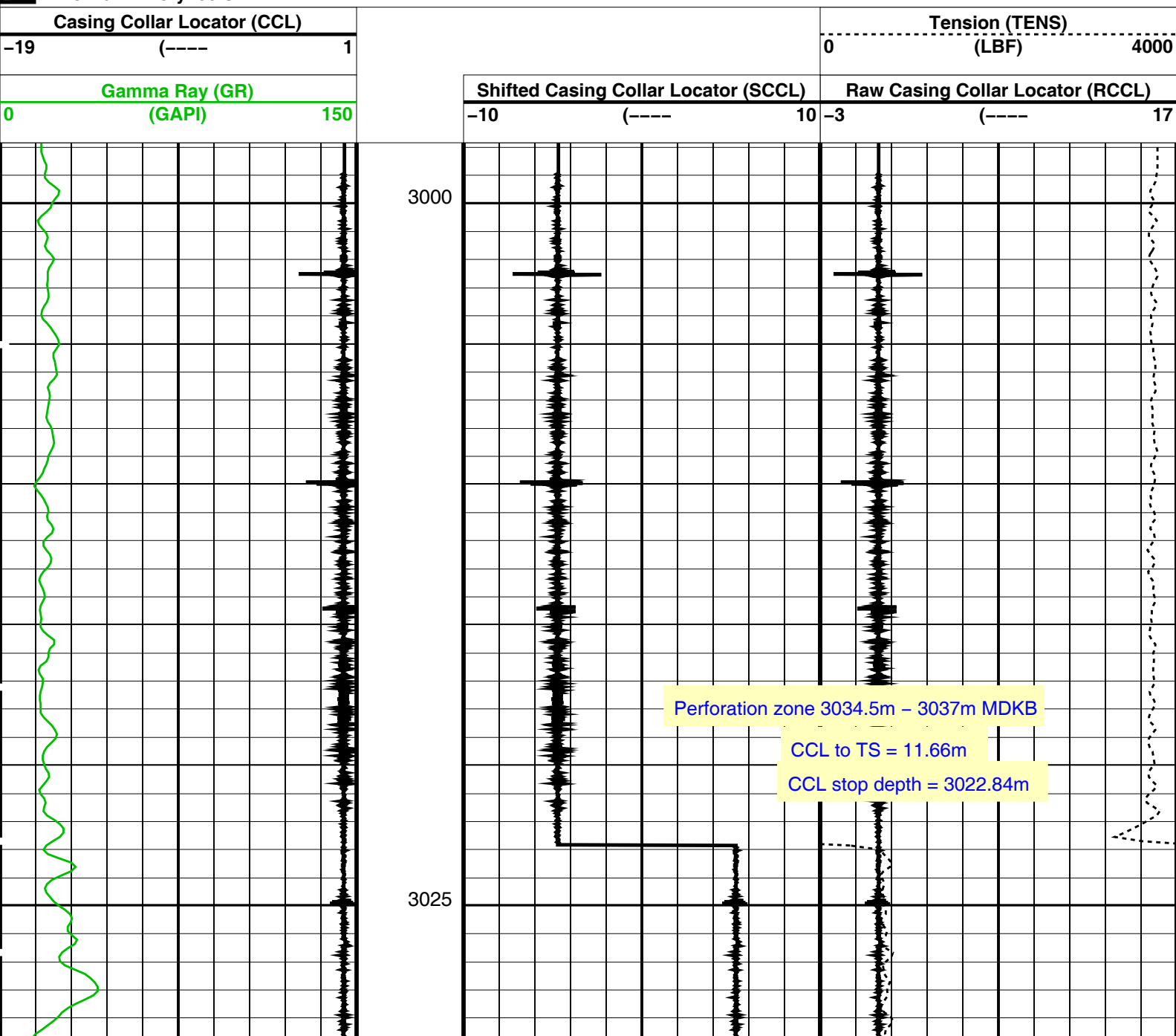
DEFAULT PERFO\_035LUP FN:34 PRODUCER 26-Aug-2009 02:01 3053.9 M 2997.7 M

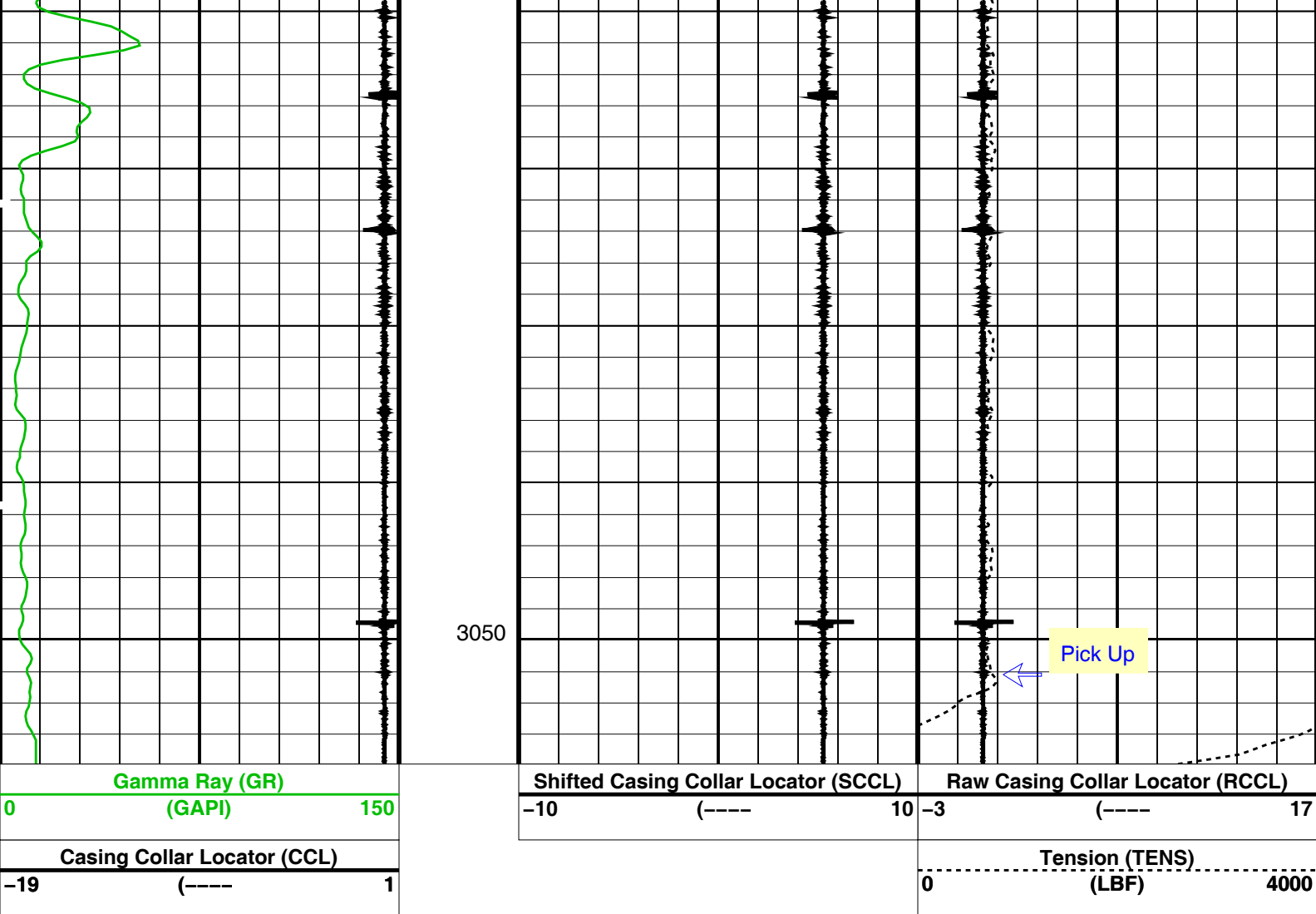
## OP System Version: 17C0-154

SHM\_GUN 17C0-154 PGGT-D 17C0-154

### PIP SUMMARY

Time Mark Every 60 S





PIP SUMMARY

Time Mark Every 60 S

Format: PERFO Vertical Scale: 1:200

Graphics File Created: 26-Aug-2009 02:01

OP System Version: 17C0-154

SHM\_GUN 17C0-154 PGGT-D 17C0-154

Output DLIS Files

DEFAULT PERFO\_035LUP FN:34 PRODUCER 26-Aug-2009 02:01

Schlumberger

Max-R Correlation Pass

MAXIS Field Log

Company: Esso Australia Pty Ltd

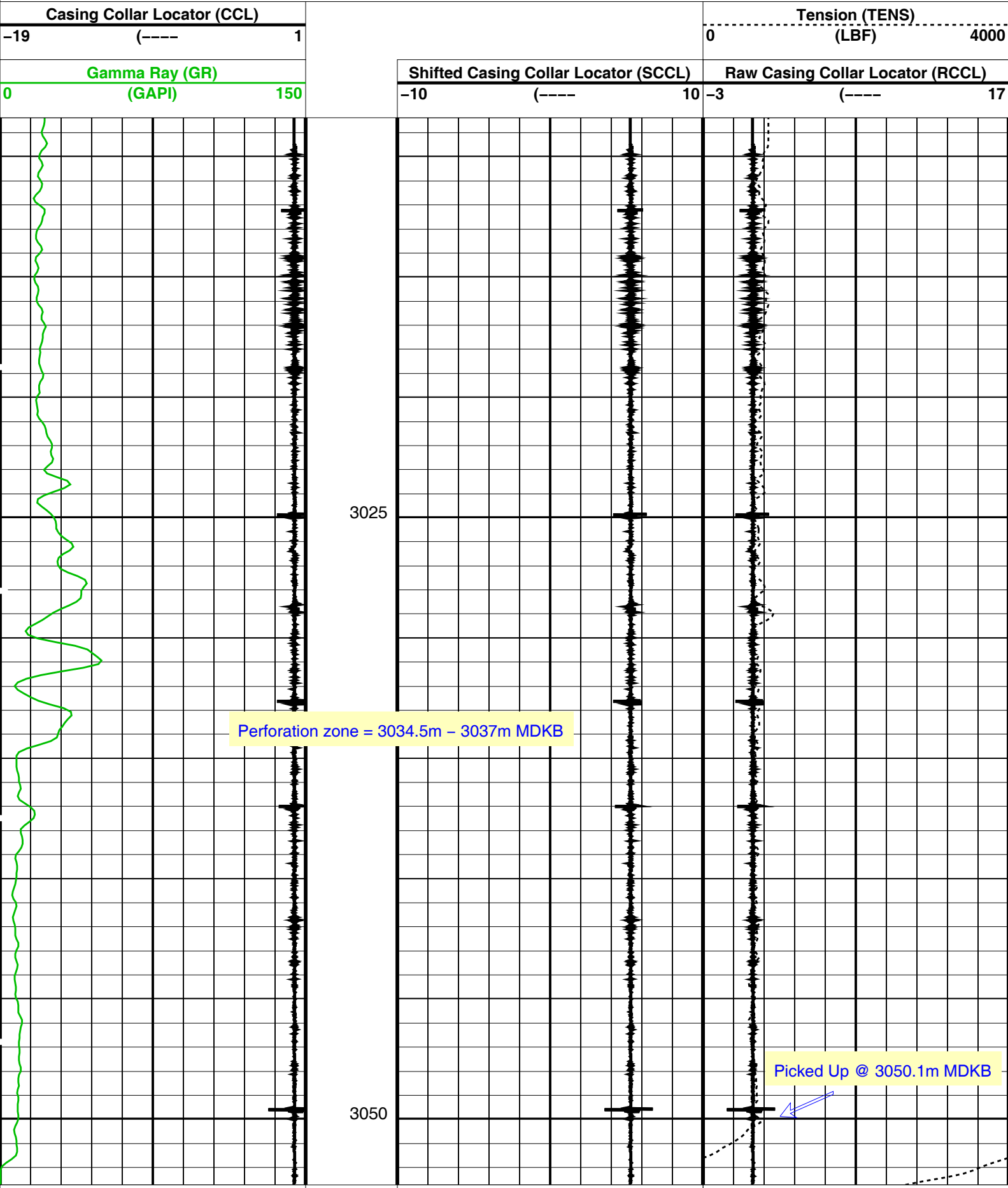
Well: CBA A28

Output DLIS Files

DEFAULT PERFO\_034LUP FN:33 PRODUCER 26-Aug-2009 01:53 3052.7 M 3008.4 M

PIP SUMMARY

Time Mark Every 60 S





|                             |                          |     |     |       |    |                |       |      |
|-----------------------------|--------------------------|-----|-----|-------|----|----------------|-------|------|
| 0                           | Gamma Ray (GR)<br>(GAPI) | 150 | -10 | (---- | 10 | -3             | (---- | 17   |
| Casing Collar Locator (CCL) |                          |     |     |       |    | Tension (TENS) |       |      |
| -19                         | (----                    | 1   |     |       |    | 0              | (LBF) | 4000 |

#### PIP SUMMARY

Time Mark Every 60 S

Format: PERFO Vertical Scale: 1:200

Graphics File Created: 26-Aug-2009 01:53

### OP System Version: 17C0-154

SHM\_GUN 17C0-154 PGGT-D 17C0-154

### Output DLIS Files

DEFAULT PERFO\_034LUP FN:33 PRODUCER 26-Aug-2009 01:53

**Schlumberger**

6" Junk Basket Pass

MAXIS Field Log

Company: Esso Australia Pty Ltd

Well: CBA A28

### Output DLIS Files

DEFAULT PERFO\_018LUP FN:17 PRODUCER 25-Aug-2009 03:27 3077.1 M 3007.2 M

### OP System Version: 17C0-154

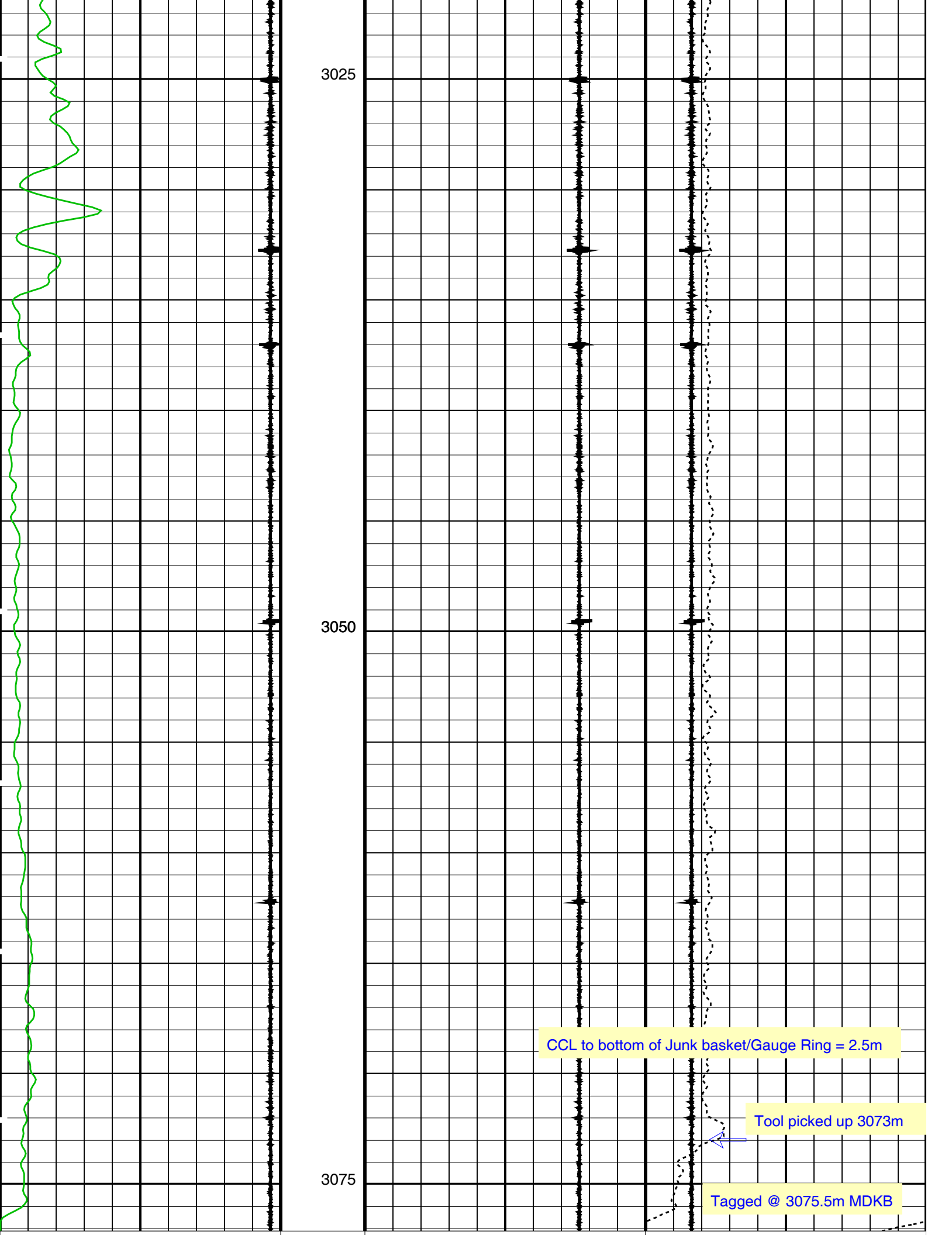
SHM\_GUN 17C0-154 PGGT-D 17C0-154

#### PIP SUMMARY

Time Mark Every 60 S

|                             |                          |     |                                      |       |    |                                  |       |      |
|-----------------------------|--------------------------|-----|--------------------------------------|-------|----|----------------------------------|-------|------|
| Casing Collar Locator (CCL) |                          |     |                                      |       |    | Tension (TENS)                   |       |      |
| -19                         | (----                    | 1   |                                      |       |    | 0                                | (LBF) | 3000 |
| 0                           | Gamma Ray (GR)<br>(GAPI) | 150 | Shifted Casing Collar Locator (SCCL) |       |    | Raw Casing Collar Locator (RCCL) |       |      |
| -10                         | (----                    | 10  | -3                                   | (---- | 17 |                                  |       |      |

Logged correlated to LWD PDF therefore is not 100% accurate. The company man is aware of this as a PDS was not available.



|                                 |              |                                      |                |  |                   |
|---------------------------------|--------------|--------------------------------------|----------------|--|-------------------|
| Gamma Ray (GR)                  |              | Shifted Casing Collar Locator (SCCL) |                | Raw Casing Collar Locator (RCCL)         |                   |
| 0                               | (GAPI)       | 150                                  | -10            | (----                                    | 10 17             |
| Casing Collar Locator (CCL)     |              |                                      | Tension (TENS) |  |                   |
| -19                             | (----        | 1                                    | 0              | (LBF)                                    | 3000              |
| PIP SUMMARY                     |              |                                      |                |  |                   |
| Time Mark Every 60 S            |              |                                      |                |  |                   |
| Format: PERFO                   |              | Vertical Scale: 1:200                |                | Graphics File Created: 25-Aug-2009 03:27 |                   |
| OP System Version: 17C0-154     |              |                                      |                |  |                   |
| SHM_GUN                         | 17C0-154     |                                      | PGGT-D         | 17C0-154                                 |                   |
| Output DLIS Files               |              |                                      |                |  |                   |
| DEFAULT                         | PERFO_018LUP |                                      | FN:17          | PRODUCER                                 | 25-Aug-2009 03:27 |
| Company: Esso Australia Pty Ltd |              |                                      |                |  |                   |
| Well: CBA A15B                  |              |                                      |                |  |                   |
| Field: Cobia                    |              |                                      |                |  |                   |
| Rig: Rig 175                    |              |                                      |                |  |                   |
| Country: Australia              |              |                                      |                |  |                   |
| Junk Basket with 6" Gauge Ring  |              |                                      |                |  |                   |
| Max-R Setting Record            |              |                                      |                |  |                   |
| 25-Aug-2009                     |              |                                      |                |  |                   |