

Company: Esso Australia Pty Ltd.

Well: 2
Field: Bream B
Rig: Prod4 / Crane
Country: Australia

2 1/8" Powerjet MWPT Perforation Record
7" Posiset Plug Setting Record

Rig: Prod4 / Crane
Field: Bream B
Location: Gippsland
Well: 2
Company: Esso Australia Pty Ltd.

LOCATION			
Gippsland		Elev.:	K.B. 47.17 m
Basin			G.L. 47.17 m
Bass Strait			D.F. -61.00 m
Permanent Datum:		M.S.L.	
Log Measured From:		K.B.	
Drilling Measured From:		K.B.	
State:	Max. Well Deviation	Longitude	Latitude
Victoria	18 deg	148°06'15.37"E	038 35'40.34"S

Logging Date	12-Mar-2009				
Run Number	1 through 5				
Depth Driller	2345 m				
Schlumberger Depth	1971.5 m				
Bottom Log Interval	1958.1 m				
Top Log Interval	1956.8 m				
Casing Fluid Type	Production Fluids				
Salinity					
Density					
Fluid Level	0 m				
BIT/CASING/TUBING STRING					
Bit Size	8.500 in				
From	768 m				
To	2385 m				
Casing/Tubing Size	7.000 in				
Weight	26 lbm/ft				
Grade	L80				
From	21 m				
To	2370 m				
Maximum Recorded Temperatures	182 degF				
Logger On Bottom	12-Mar-2009		14:10		
Unit Number	889	Prod4 / Ausl			
Recorded By	B Donahoe				
Witnessed By	Dave Madden				

PVT DATA		Run 1	Run 2	Run
Oil Density				
Water Salinity				
Gas Gravity				
Bo				
Bw				
1/Bg				
Bubble Point Pressure				
Bubble Point Temperature				
Solution GOR				
Maximum Deviation	18 deg			
CEMENTING DATA				
Primary/Squeeze	Primary			
Casing String No				
Lead Cement Type				
Volume				
Density				
Water Loss				
Additives				
Tail Cement Type				
Volume				
Density				
Water Loss				
Additives				
Expected Cement Top				
Logging Date				
Run Number				
Depth Driller				
Schlumberger Depth				
Bottom Log Interval				
Top Log Interval				
Casing Fluid Type				
Salinity				
Density				
Fluid Level				
BIT/CASING/TUBING STRING				
Bit Size				
From				
To				
Casing/Tubing Size				
Weight				
Grade				
From				
To				
Maximum Recorded Temperatures				
Logger On Bottom				
Unit Number				
Recorded By				
Witnessed By				

DEPTH SUMMARY LISTING

Date Created: 14-MAR-2009 10:26:40

Depth System Equipment

Depth Measuring Device		Tension Device		Logging Cable	
Type:	IDW-EB	Type:	PSDS/OSDS	Type:	2-32ZT
Serial Number:	6373	Serial Number:	325357	Serial Number:	208196
Calibration Date:	04-Jan-2007	Calibration Date:	6-Mar-2009	Length:	6245 M
Calibrator Serial Number:	9	Calibrator Serial Number:	1174		
Calibration Cable Type:	2-32ZT	Number of Calibration Points:	0	Conveyance Method:	Wireline
Wheel Correction 1:	-2			Rig Type:	Rigless
Wheel Correction 2:	-4				

Depth Control Parameters

Log Sequence: Subsequent Log In the Well

Reference Log Name:

Reference Log Run Number: 1

Reference Log Date: .



Depth Control Remarks

1. IDW-EB 6373 used as primary depth control.
2. Z-Chart as back-up.
- 3.
- 4.
- 5.
- 6.

DISCLAIMER

THE USE OF AND RELIANCE UPON THIS RECORDED-DATA BY THE HEREIN NAMED COMPANY (AND ANY OF ITS AFFILIATES, PARTNERS, REPRESENTATIVES, AGENTS, CONSULTANTS AND EMPLOYEES) IS SUBJECT TO THE TERMS AND CONDITIONS AGREED UPON BETWEEN SCHLUMBERGER AND THE COMPANY, INCLUDING: (a) RESTRICTIONS ON USE OF THE RECORDED-DATA; (b) DISCLAIMERS AND WAIVERS OF WARRANTIES AND REPRESENTATIONS REGARDING COMPANY'S USE OF AND RELIANCE UPON THE RECORDED-DATA; AND (c) CUSTOMER'S FULL AND SOLE RESPONSIBILITY FOR ANY INFERENCE DRAWN OR DECISION MADE IN CONNECTION WITH THE USE OF THIS RECORDED-DATA.

OTHER SERVICES1 OS1: None OS2: OS3: OS4: OS5:	OTHER SERVICES2 OS1: OS2: OS3: OS4: OS5:
REMARKS: RUN NUMBER 1	REMARKS: RUN NUMBER 2
Log correlated to ExxonMobil composite supplied with logging program.	
Maximum well deviation = 18deg @ 440.5m MDKB.	
Objectives: Add perforations over the interval 1956.8 m to 1958.1m MDKB using 2 1/8" 6spf,	
45 deg phased Powerjet perforating guns with MWPT. Following this we will set a 7" Plug	
with the top of the sealing surface at 1959.6m MDKB and top with 1m of cement.	
Perforation Zone = 1956.8 m to 1958.1 m MDKB	

CCL to Top Shot = 5.05 m					
CCL Stop Depth = 1951.75m MDKB					
7" Posiset Plug top of Seal Set @ 1959.6m MDKB					
CCL to Top of Seal = m					
CCL stop Depth = m MDKB					
1m of Cement dumped in 1 Run.					
Crew : N.Simmons , A. McClellan					
RUN 1 SERVICE ORDER #: AYCW-00005 PROGRAM VERSION: 16C0-147 FLUID LEVEL: 0 m			RUN 2 SERVICE ORDER #: PROGRAM VERSION: FLUID LEVEL:		
LOGGED INTERVAL	START	STOP	LOGGED INTERVAL	START	STOP
EQUIPMENT DESCRIPTION					
RUN 1			RUN 2		
SURFACE EQUIPMENT			SURFACE EQUIPMENT		
MWPM-AA			MPBM		
DOWNHOLE EQUIPMENT			DOWNHOLE EQUIPMENT		
AH-SWBS-B 789 AH-SWBS-B 789 AH-SWBS-B 788 AH-SWBS-B 788 AH-SWBS-B 787 AH-SWBS-B 787 AH-SWBS-B 786 AH-SWBS-B 786 AH-SWBS-B 785 AH-SWBS-B 785 MH-SWHS-A 759 AH-124 7002 MWGT-AA 19 MWPG-AA 19 MWGH-AA 19 MWPT-CA 11 MWPH-AA 94 MWPS-AA 11 AH-Flex Joint 42 AH-Flex Joint 42		13.30 12.62 11.93 11.24 10.56 9.87 9.54 9.44 8.46 5.64	AH-SWBS-B 785 AH-SWBS-B 785 AH-SWBS-B 786 AH-SWBS-B 786 AH-SWBS-B 787 AH-SWBS-B 787 AH-SWBS-B 788 AH-SWBS-B 788 AH-SWBS-S 789 AH-SWBS-S 789 MH-SWHS-A 759 MH-SWHS-A 759 CCL-PCCL 07336 CCL-PCCL 7336 MPSU-BA 20 MPSU-BA 27		13.56 12.87 12.18 11.50 10.81 10.13 9.80 9.34
	MWPG GR CCL SMWP Pres SMWP Temp Tension	2.41 TOOL ZERO	CCL Tachomete Cable Cur Head Volt Tension	TOOL ZERO	

SAH-G 1035

MPD-MB 336

MPD-MB 336

AH-ESIC 4007395

AH-ESIC 4007395

AH-Firing Head 1

MWP_GUN

GUN-2 1/8" Phased Powerjet 1

TOOL BOTTOM

MAXIMUM STRING DIAMETER 2.13 IN
MEASUREMENTS RELATIVE TO TOOL ZERO
ALL LENGTHS IN METERS

5.19

4.86

4.32

3.89

3.66

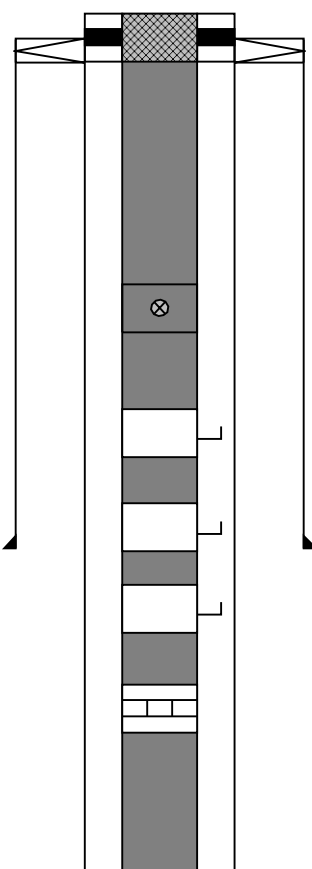
MPEX-AA

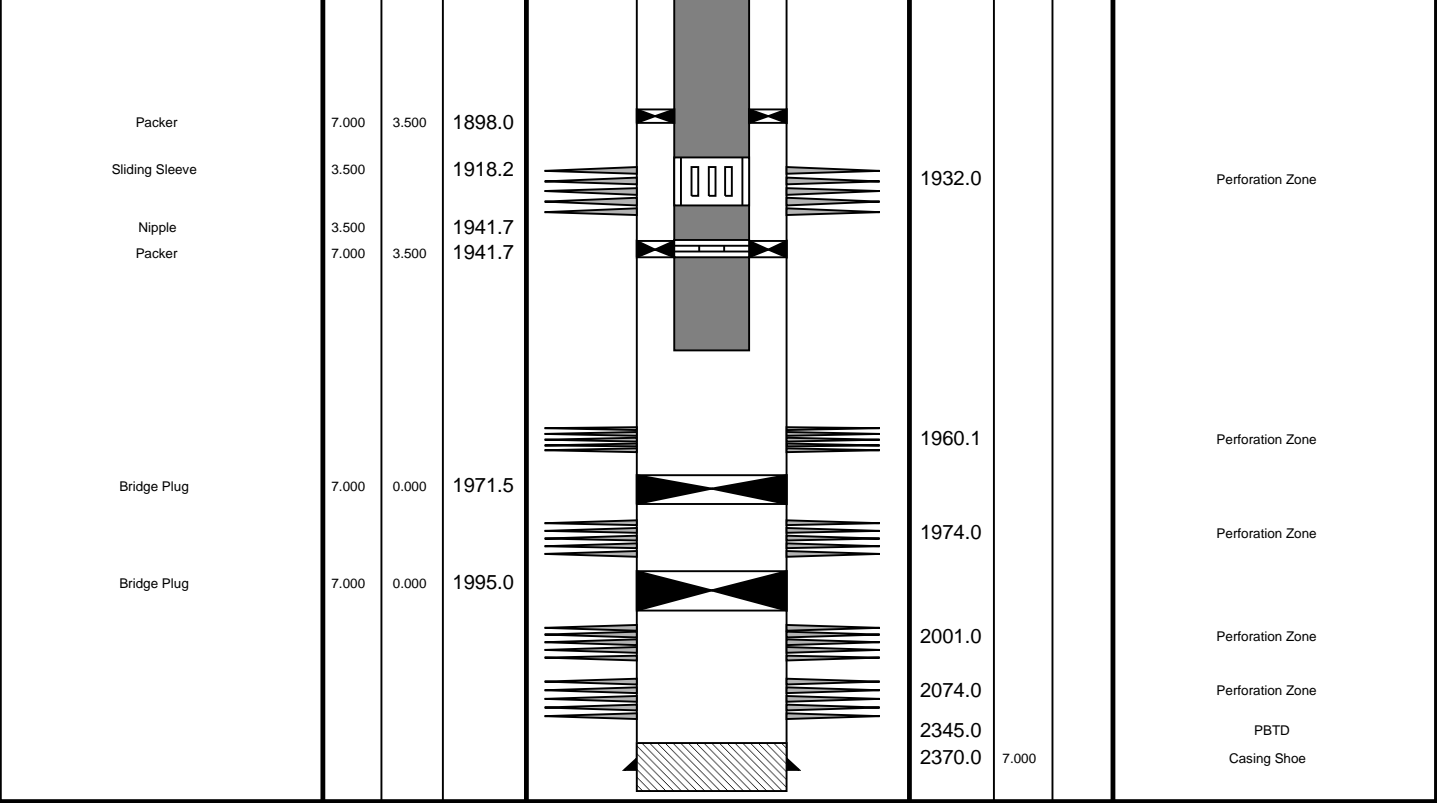
MPEX-AA

TOOL BOTTOM

MAXIMUM STRING DIAMETER 1.71 IN
MEASUREMENTS RELATIVE TO TOOL ZERO
ALL LENGTHS IN METERS

3.10

Production String	(in)		(m)	Well Schematic	(m)	(in)		Casing String
	OD	ID	MD		MD	OD	ID	
Tubing Hanger Tubing	7.000	3.500	20.3		22.0	13.375	Casing String Casing String Liner Hanger	
	3.500		20.3		21.0	7.000		
					21.0	13.375		7.000
Shutin Valve	3.500		449.0					
Gas Lift Mandrel	3.500		632.0					
Gas Lift Mandrel	3.500		776.0		768.0	13.375		Casing Shoe
Gas Lift Mandrel	3.500		987.0					
Nipple	3.500		1003.0					



Job Events Summary

MAXIS Field Log

Schlumberger Job Event Summary

	Time	Elapsed Time	Depth (M)	File
Log Pass (up)	18-Mar-2009 10:52	000:05	1957.4 - 1912.2	PERFO_027LUP
Station Log	18-Mar-2009 11:08	000:04	1951.7	PERFO_032LTP
Log Pass (up)	18-Mar-2009 11:15	000:18	1910.0 - 683.2	PERFO_033LUP
Log Pass (down)	19-Mar-2009 9:02	000:40	-11.9 - 1926.0	MPBT_041LDP
Simulated Log	19-Mar-2009 9:56	000:28		MPBT_047LUP
Log Pass (up)	19-Mar-2009 12:20	000:09	1948.0 - 1900.0	PERFO_063LUP
Log Pass (up)	19-Mar-2009 13:53	000:07	1947.8 - 1909.7	PERFO_072LUP

Output DLIS Files

DEFAULT PERFO_072LUP FN:71 PRODUCER 19-Mar-2009 13:53

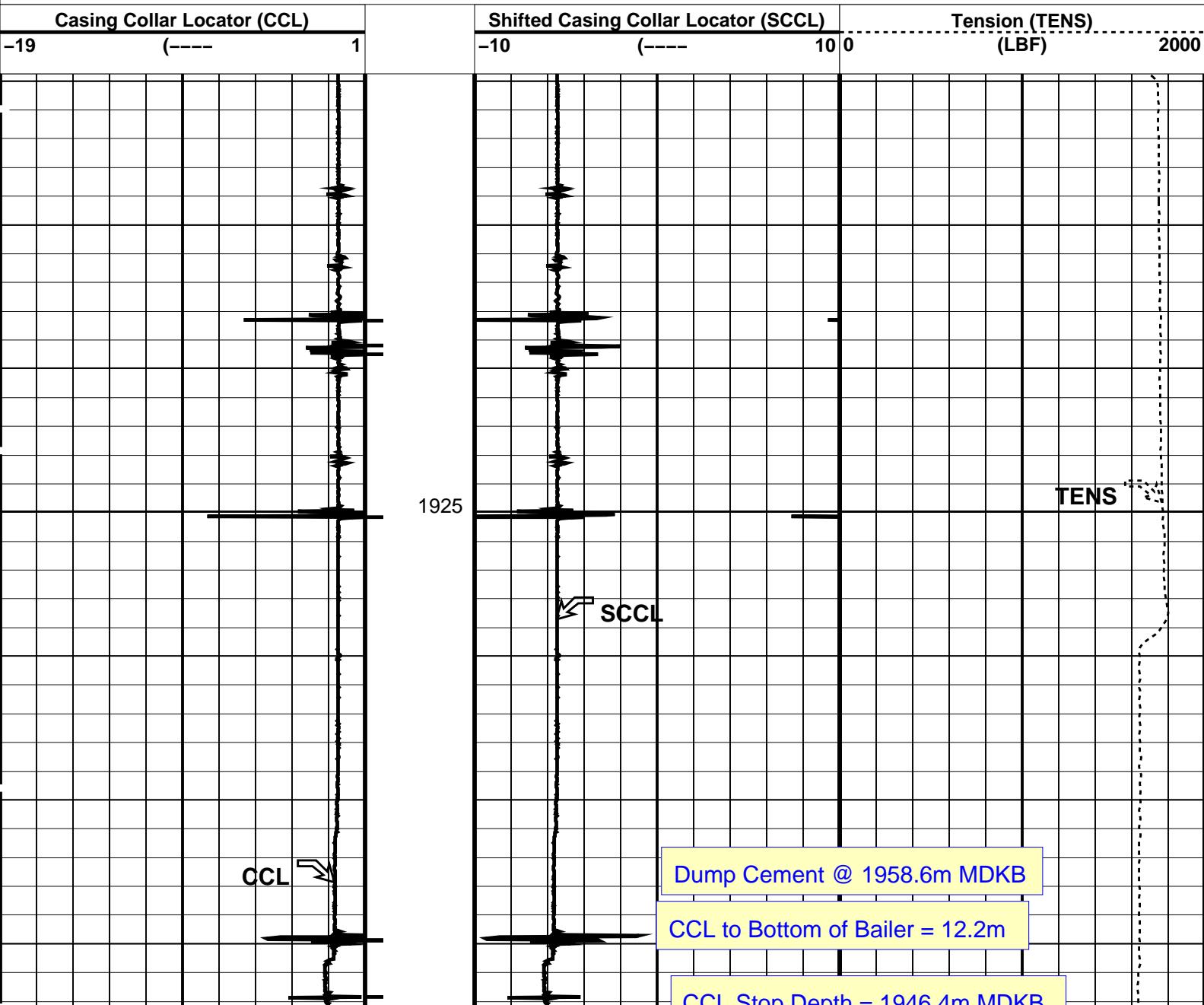
OP System Version: 16C0-147
MCM

SHM_GUN 16C0-147 CCL-L 16C0-147

PIP SUMMARY

└─ Casing Collars

Time Mark Every 60 S





└ Casing Collars

DLIS Name	Description	Value
-----------	-------------	-------

CCLD	CCL-L: Casing Collar Locator			
CCLT	CCL reset delay	12	IN	
	CCL Detection Level	0.3	V	

Graphics File Created: 19-Mar-2009 13:53

MCM

16C0-147

19-Mar-2009 13:53



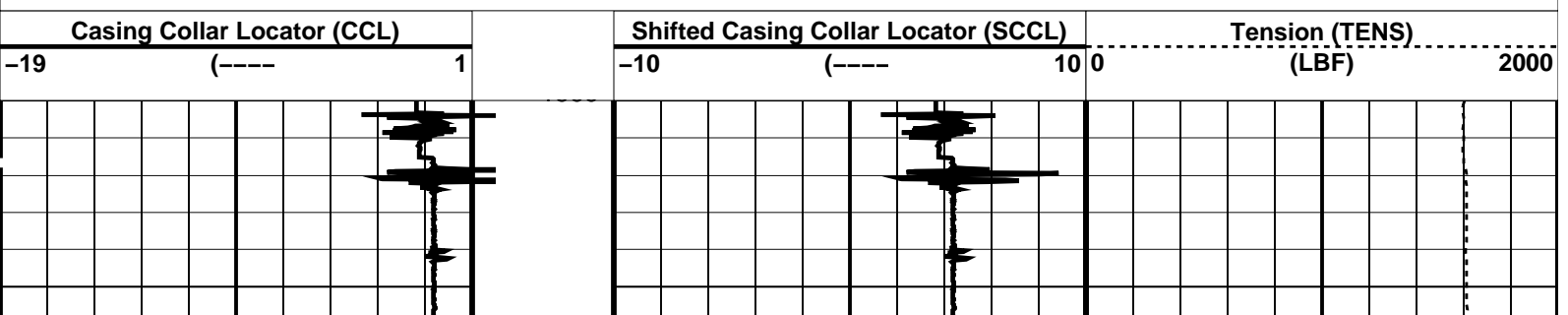
MAXIS Field Log

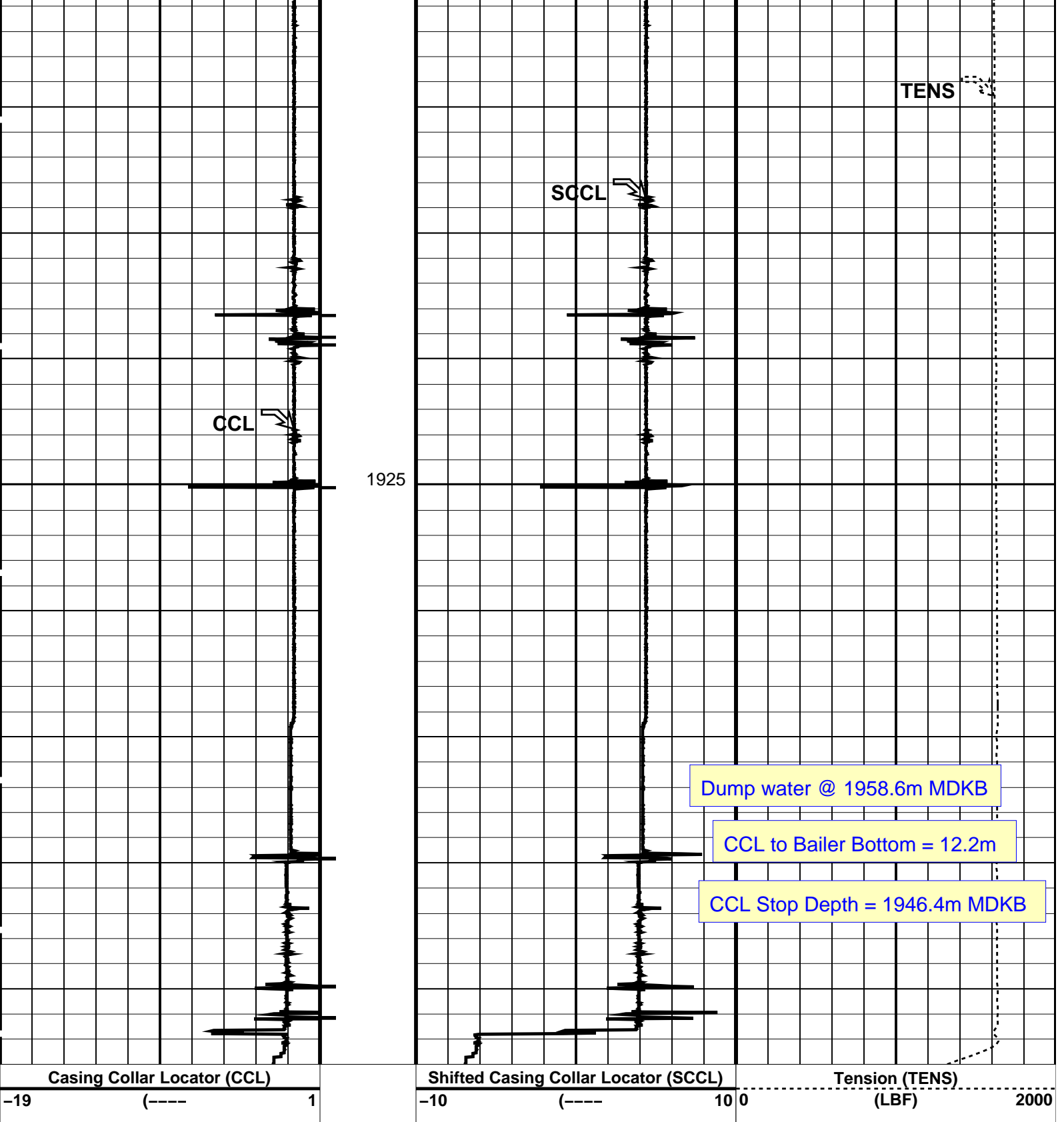
1900.0 M

MCM


16C0-147

└ Casing Collars





PIP SUMMARY		
Time Mark Every 60 S		
Parameters		
DLIS Name	Description	Value
CCL-L: Casing Collar Locator		
CCLD	CCL reset delay	12 IN
CCLT	CCL Detection Level	0.3 V
Format: PERFO Vertical Scale: 1:200		Graphics File Created: 19-Mar-2009 12:20



Plug Setting Pass

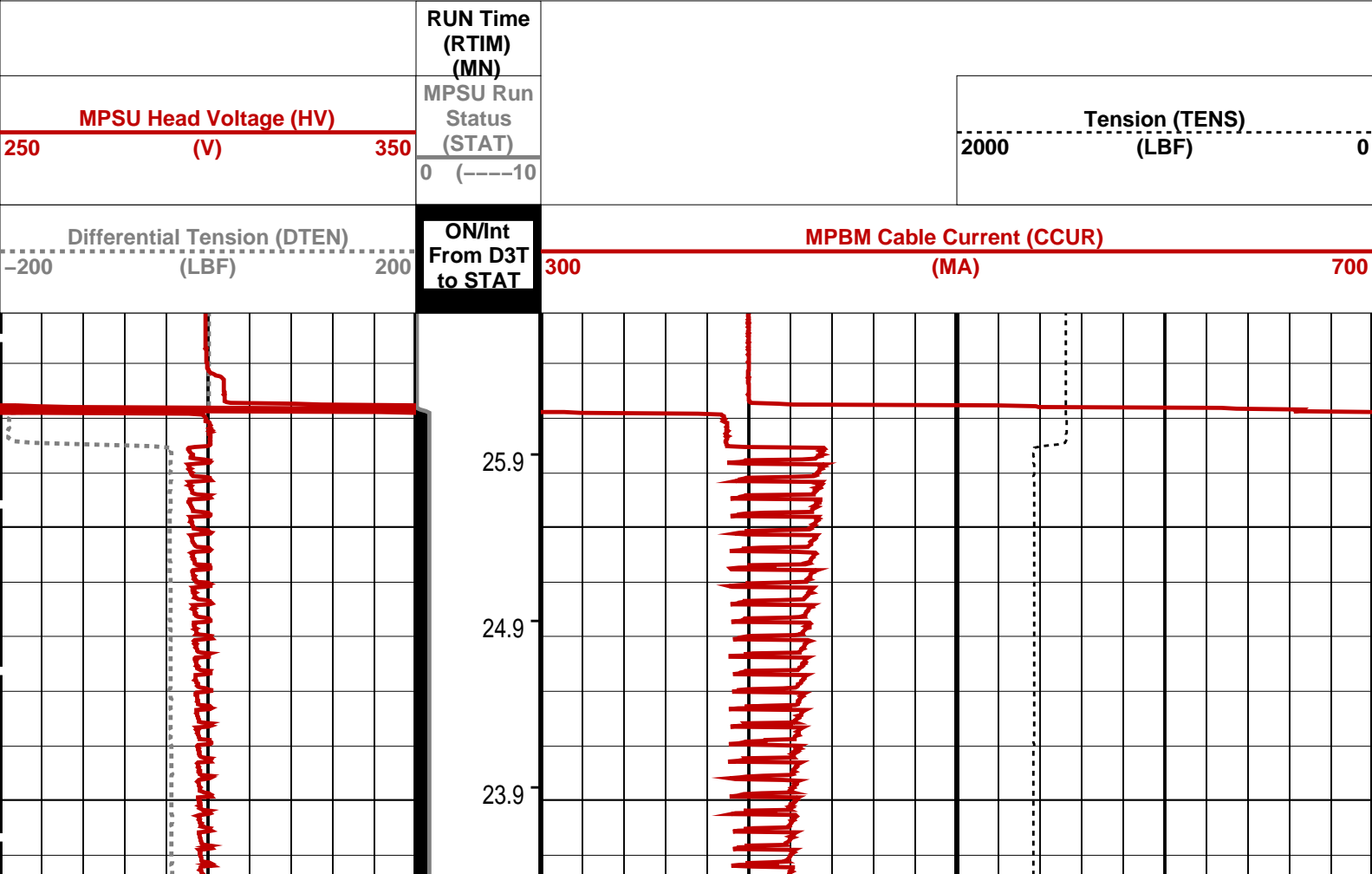
MAXIS Field Log

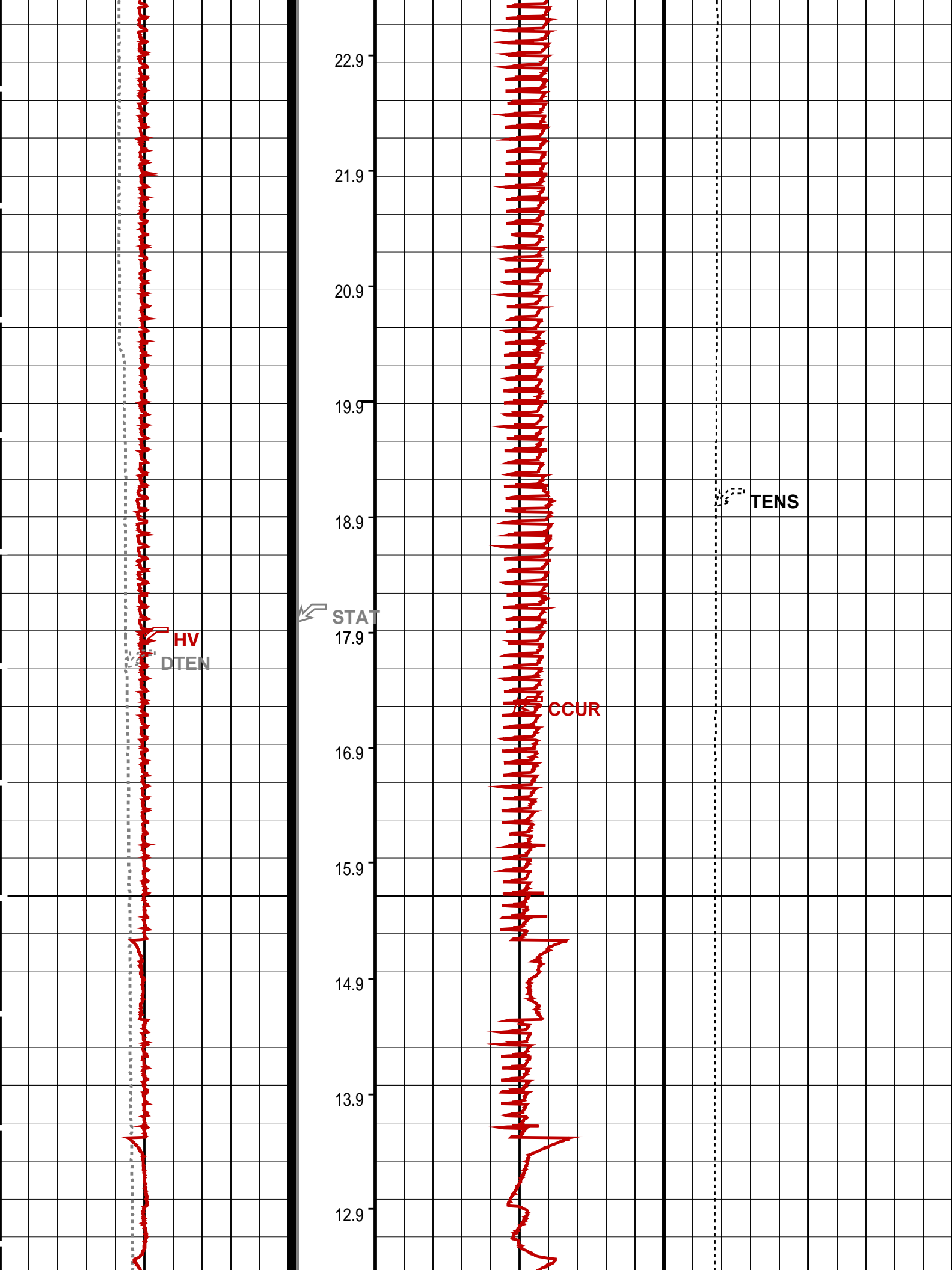
PIP SUMMARY

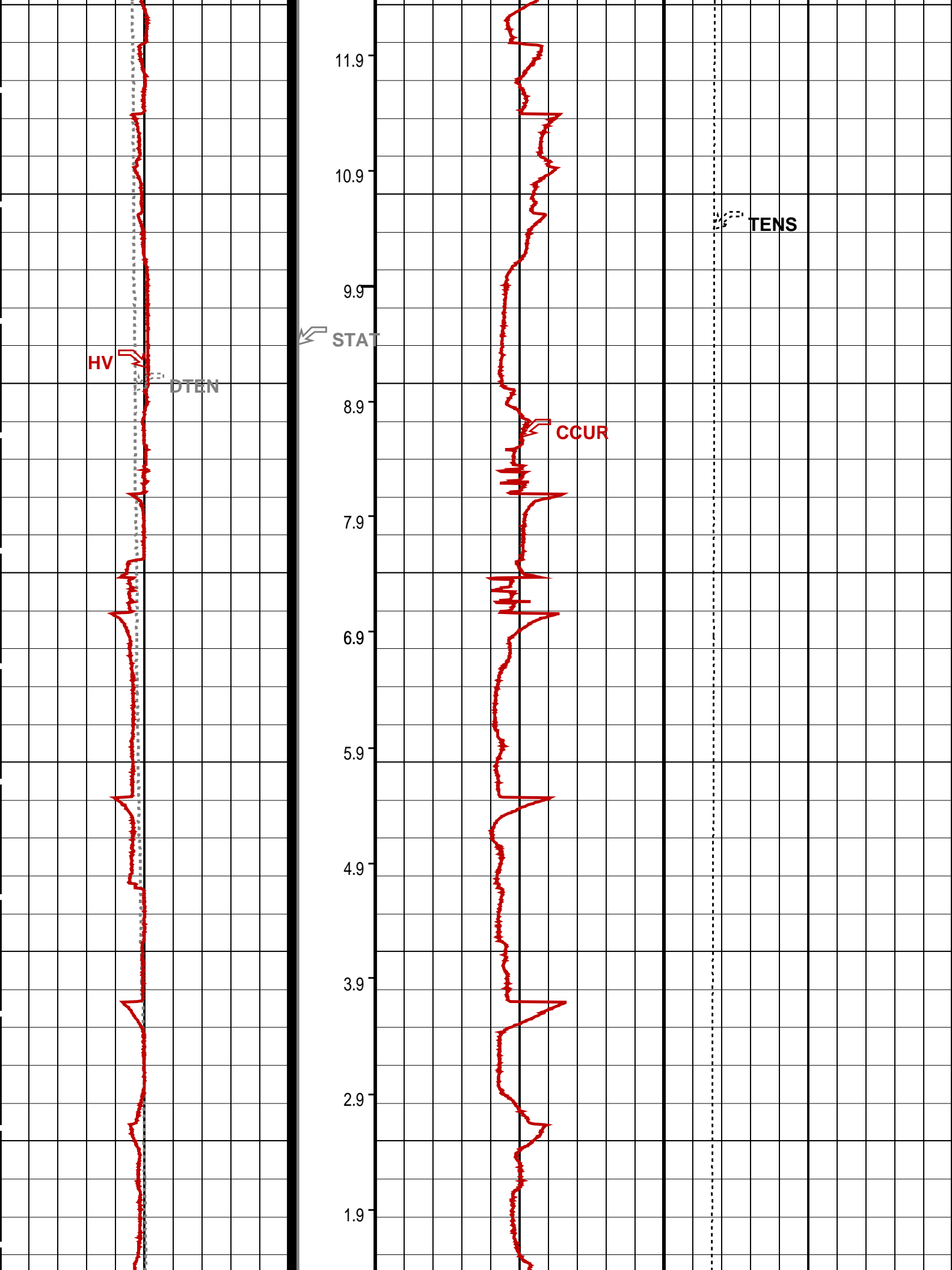
↵ MPSU Run Time Every 1 MN

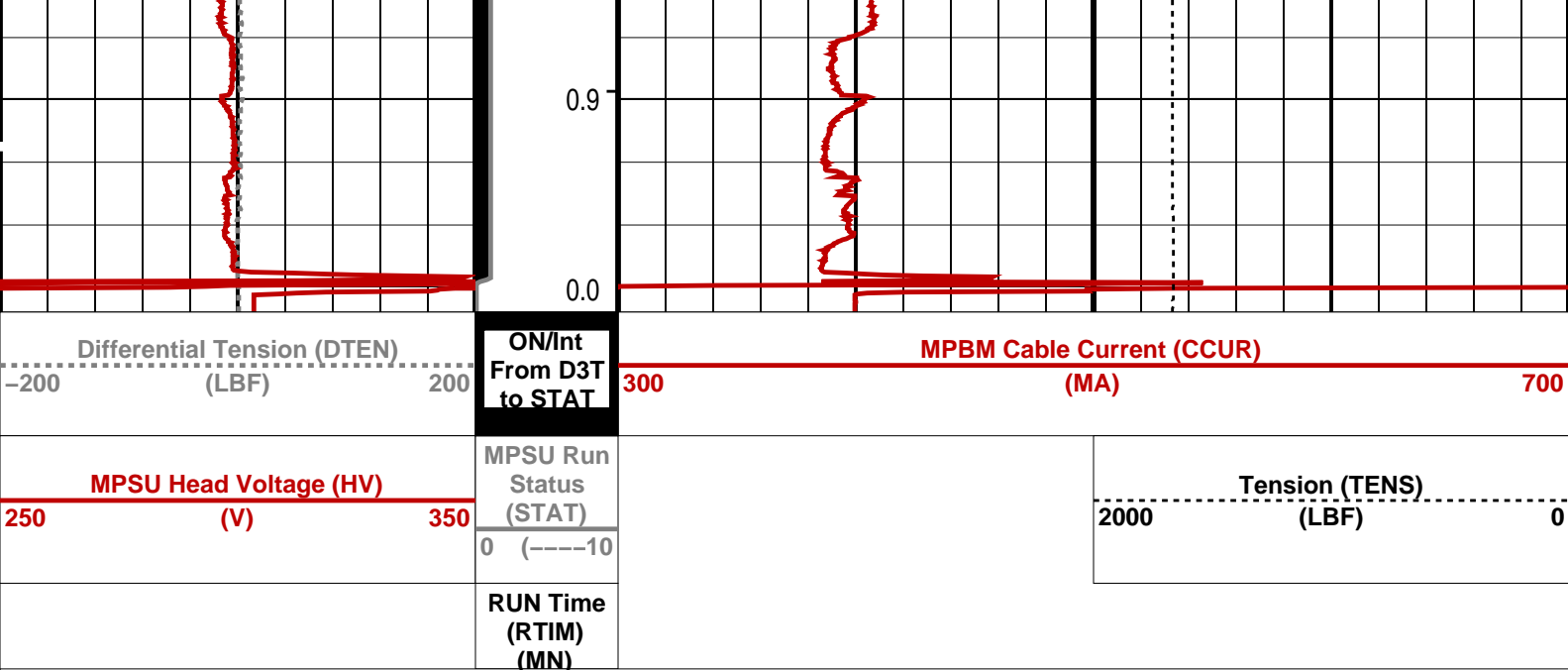
↵ MPSU Run Time Every 10 MN

 Time Mark Every 60 S










PIP SUMMARY
→ MPSU Run Time Every 1 MN
→ MPSU Run Time Every 10 MN
Time Mark Every 60 S

Parameters		
DLIS Name	Description	Value
IPUMP	MPSU-BA: MECHANICAL PLUGBACK SETTING UNIT Intensifier Pump	TRUE

Format: MPBT Vertical Scale: 1:600 Graphics File Created: 19-Mar-2009 09:56

OP System Version: 16C0-147			
MCM			
MPEX-AA	16C0-147	MPSU-BA	16C0-147
CCL-PCCL	16C0-147		

Output DLIS Files			
DEFAULT	MPBT_047LUP	FN:46 PRODUCER	19-Mar-2009 09:56

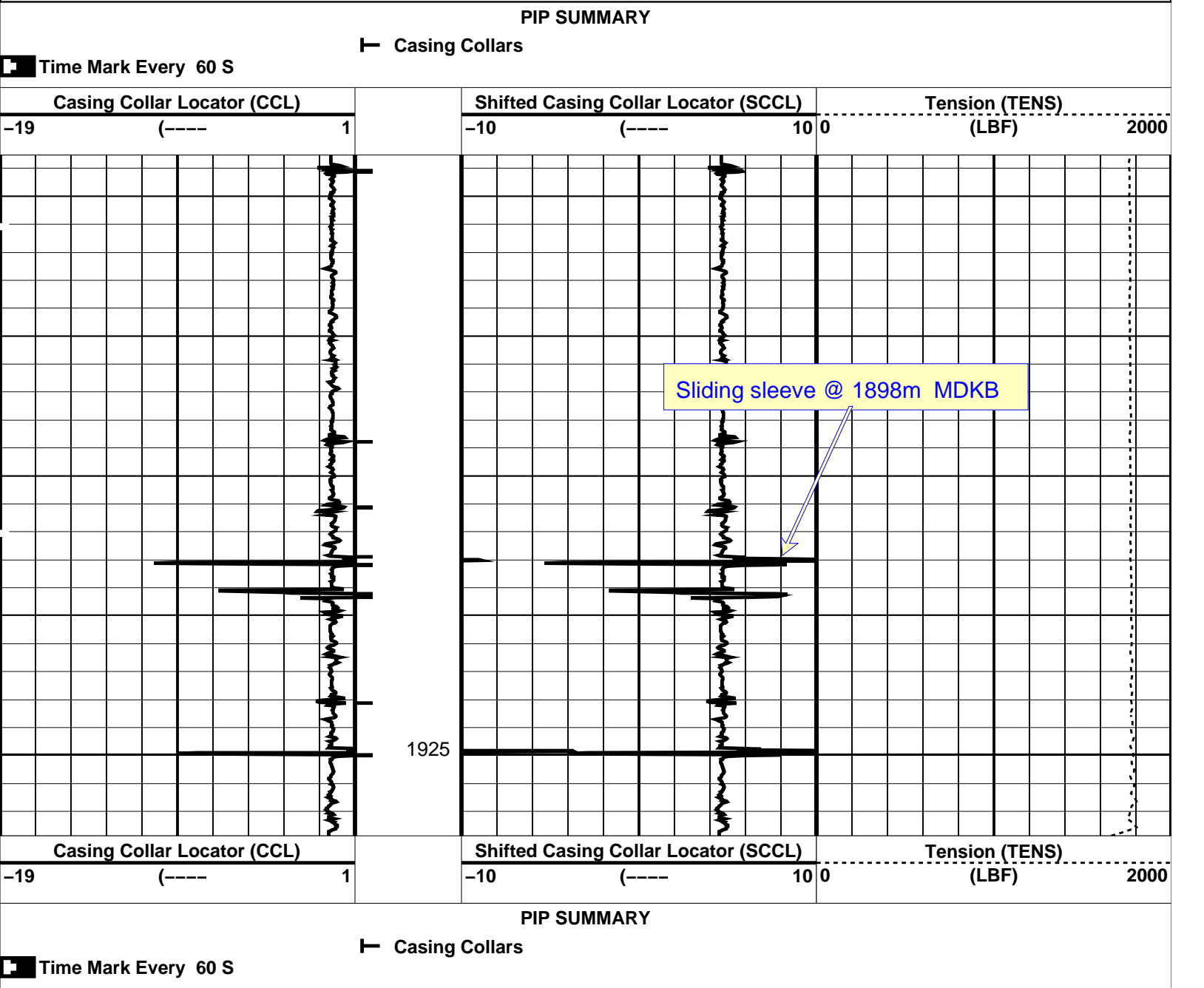


Plug Correlation Pass

MAXIS Field Log

Input DLIS Files					
DEFAULT	MPBT_042LUP	FN:41 PRODUCER	19-Mar-2009 09:42	1926.0 M	1901.6 M
Output DLIS Files					
DEFAULT	MPBT_044PUP	FN:43 PRODUCER	19-Mar-2009 09:47	1927.9 M	1903.5 M

OP System Version: 16C0-147			
MCM			



Parameters		
DLIS Name	Description	Value
CCLD	CCL-PCCL: Casing Collar Locator	
CCLT	CCL reset delay	12 IN
	CCL Detection Level	0.3 V
DO	System and Miscellaneous	
PP	Depth Offset for Playback	1.8 M
	Playback Processing	NORMAL

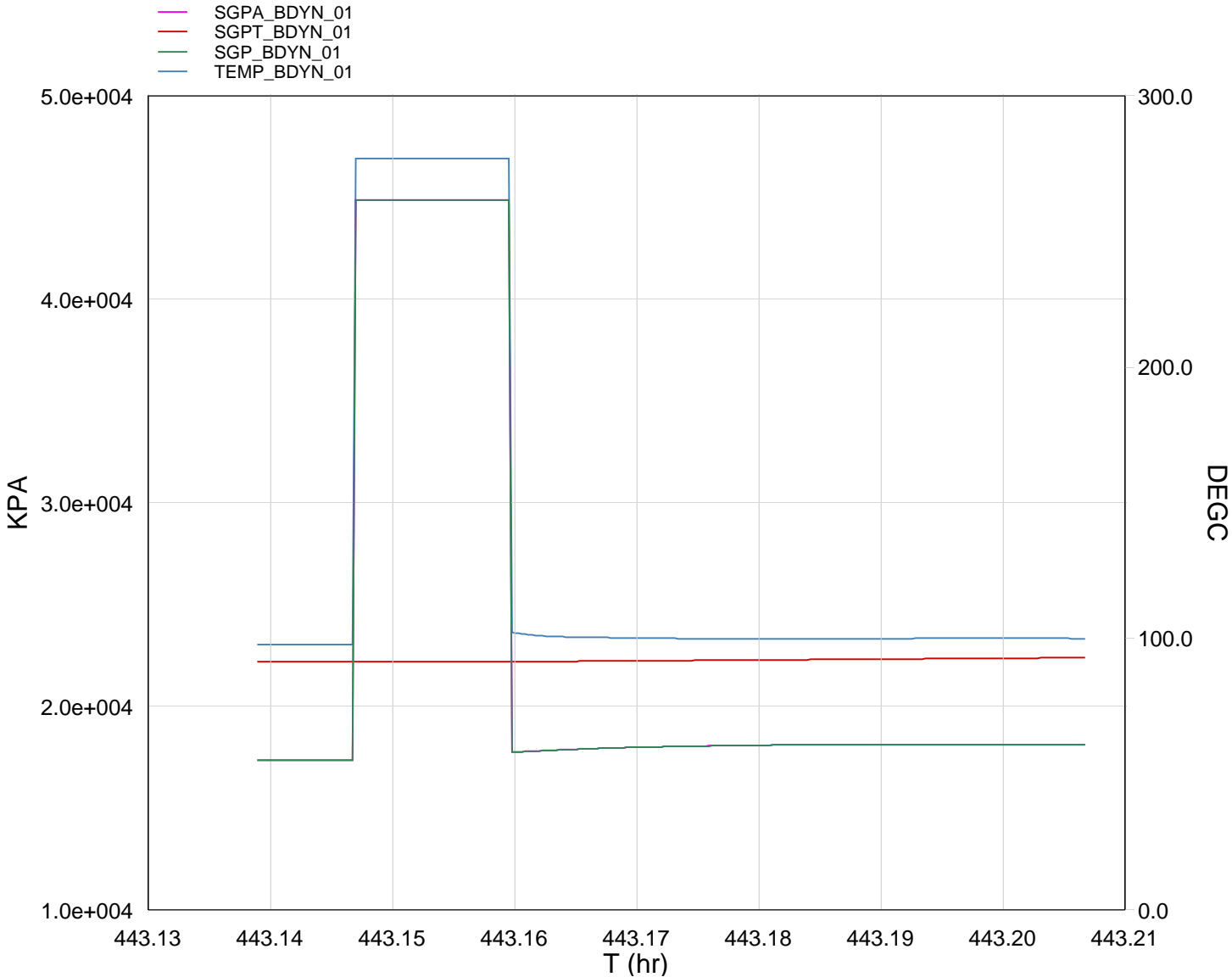
Format: PERFOVertical Scale: 1:200

Graphics File Created: 19-Mar-2009 09:47



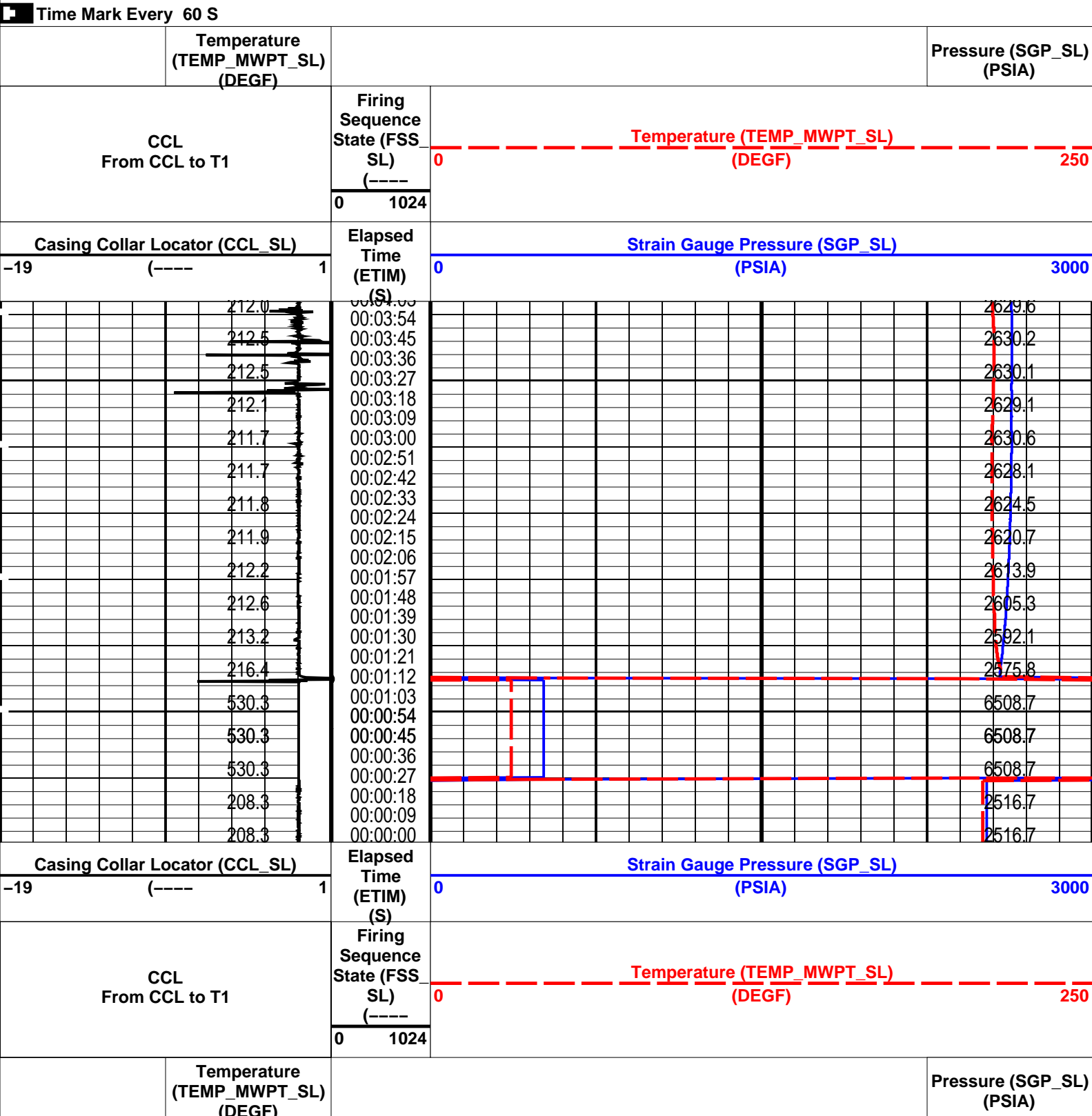
Gun Fired @
1956.8 m to 1958.1m MDKB

MAXIS Field Log



Output DLIS Files

OP System Version: 16C0-147
MCM



PIP SUMMARY

Time Mark Every 60 S

Parameters

DLIS Name	Description	Value
MWPT-CA: MEASUREMENT WHILE PERFORATING TOOL		
DEVI_FL_CORR	Deviation Angle for Flow Line Correction	0 DEG
FLD	Flow Line Density	1 G/C3
MWPT_NULL_SOURCE	MWPT NULL Temperature Source	TEMS
MWPT_NULL_TEMP	MWPT NULL Temperature	0.0 DEGC

Format: MWP_SL Vertical Scale: 1" per 60S Graphics File Created: 18-Mar-2009 11:08

OP System Version: 16C0-147

MCM

MWP_GUN16C0-147
MWGT-AA16C0-147

MWPT-CA16C0-147

Output DLIS Files

DEFAULTPERFO_032LTPFN:31PRODUCER18-Mar-2009 11:08

Schlumberger

Gun Shooting Pass

MAXIS Field Log

Company: Esso Australia Pty Ltd. Well: 2

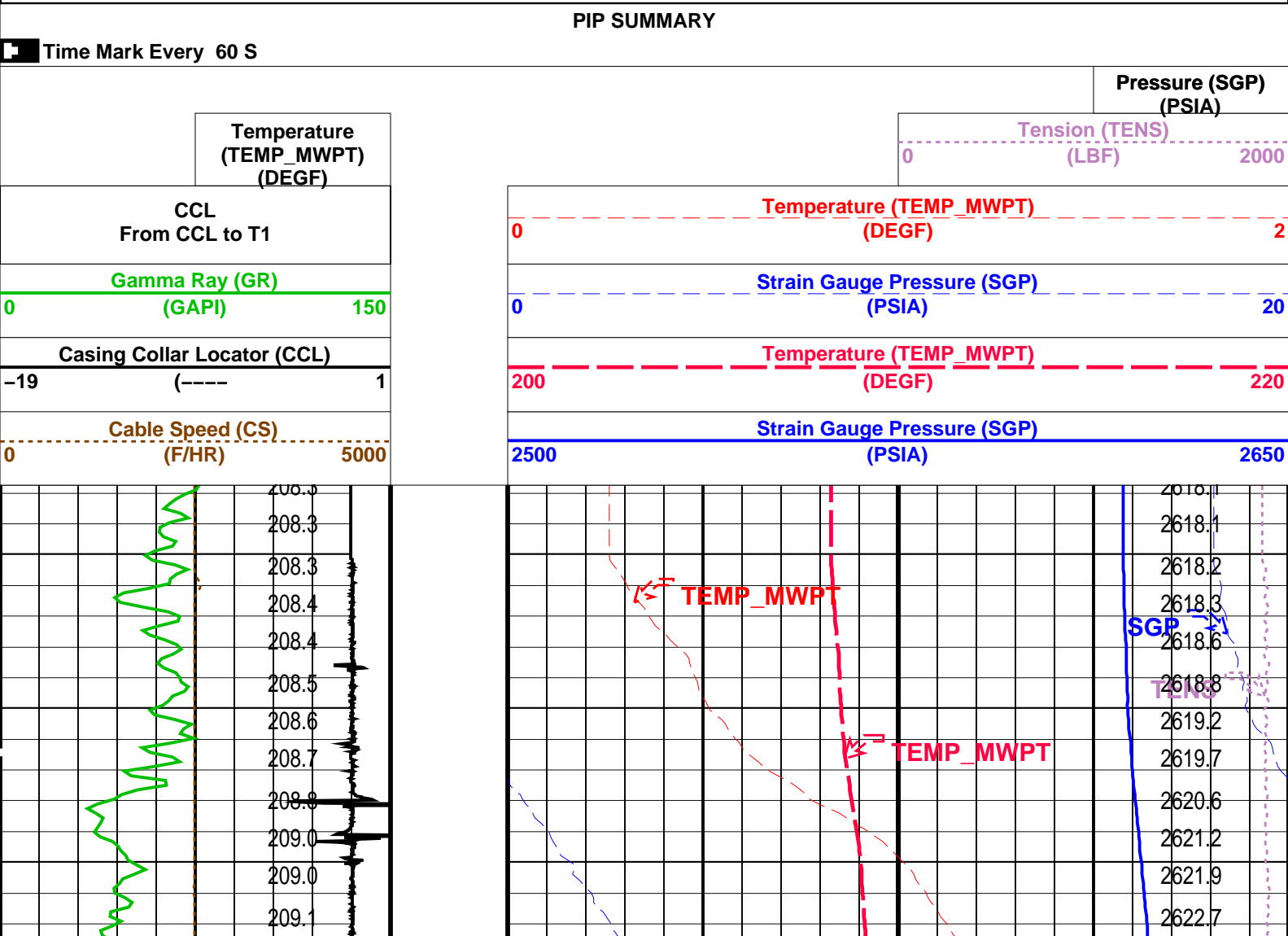
Output DLIS Files

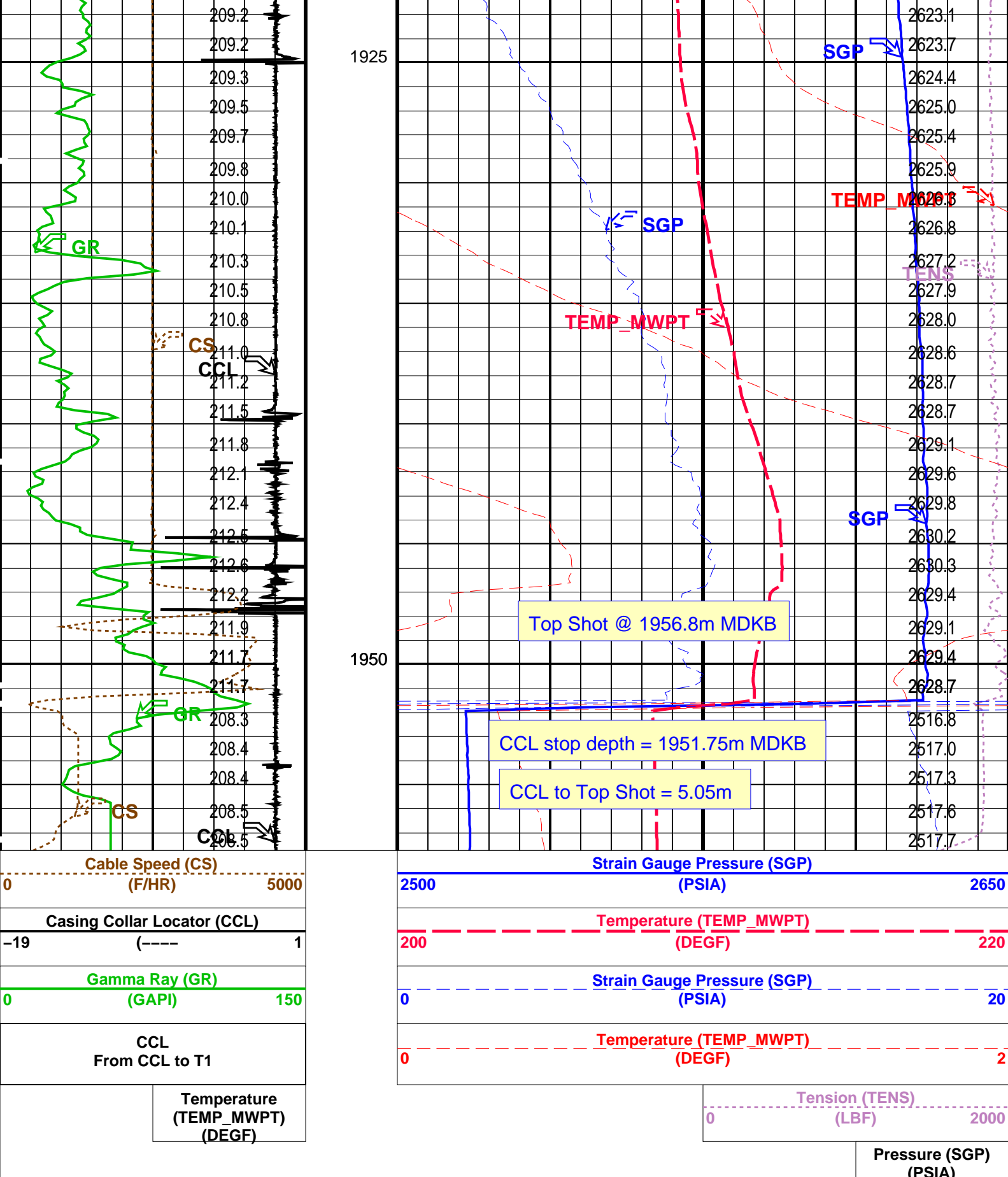
DEFAULTPERFO_031LUPFN:30PRODUCER18-Mar-2009 11:051957.7 M1907.7 M

OP System Version: 16C0-147
MCM

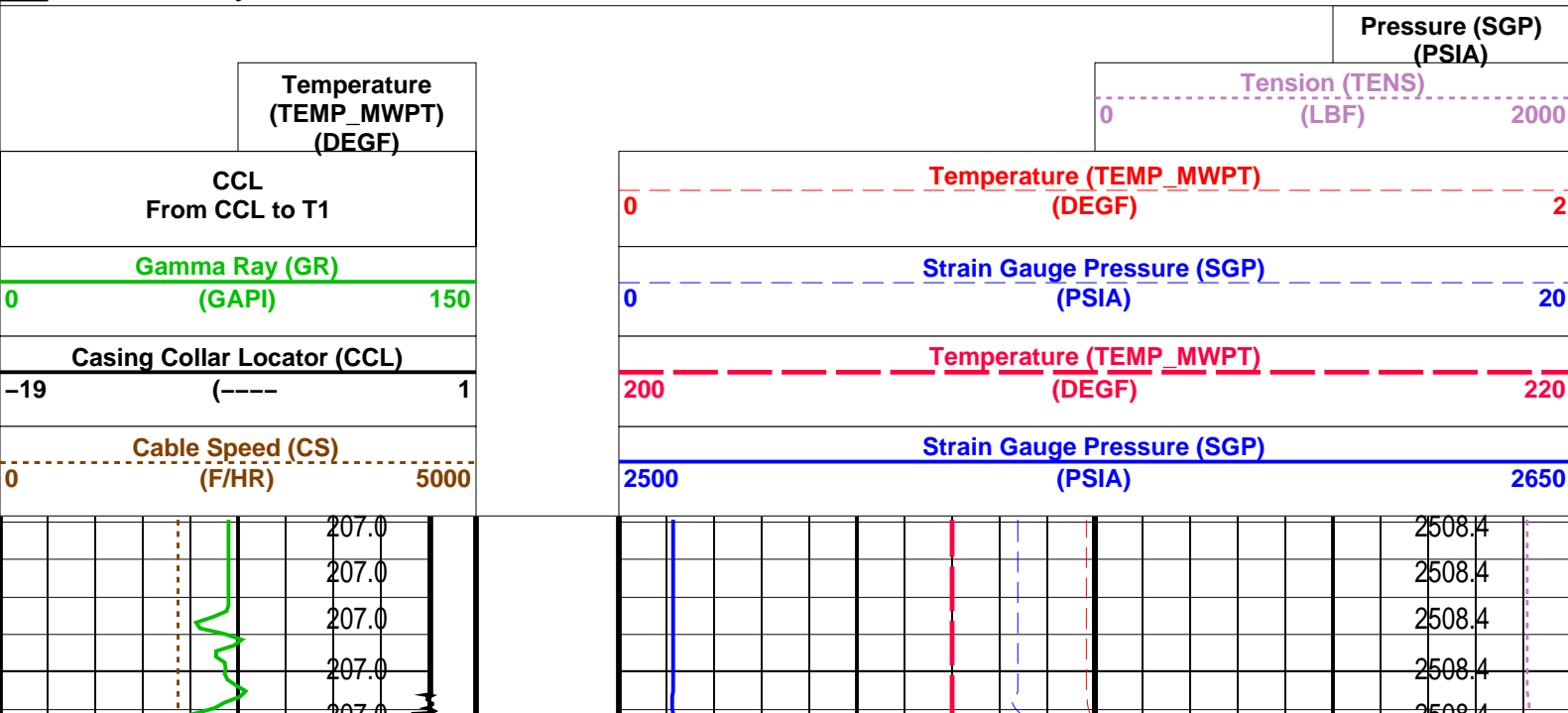
MWP_GUN16C0-147
MWGT-AA16C0-147

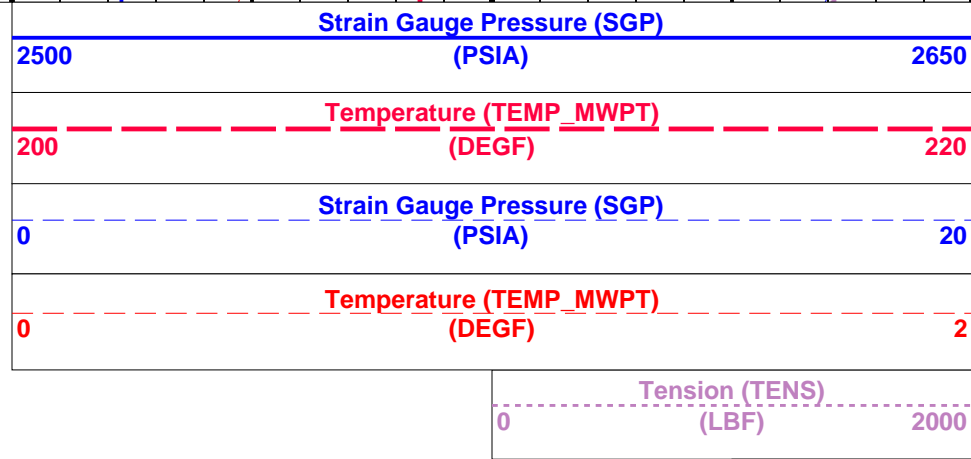
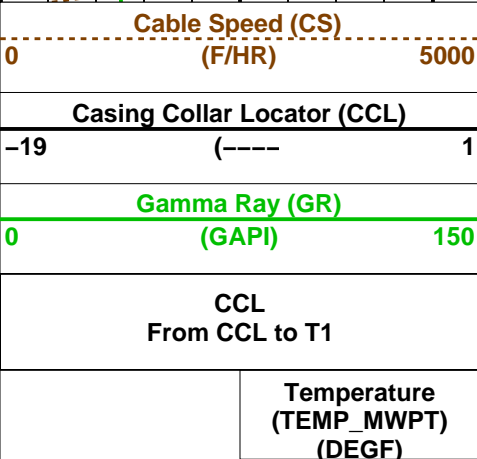
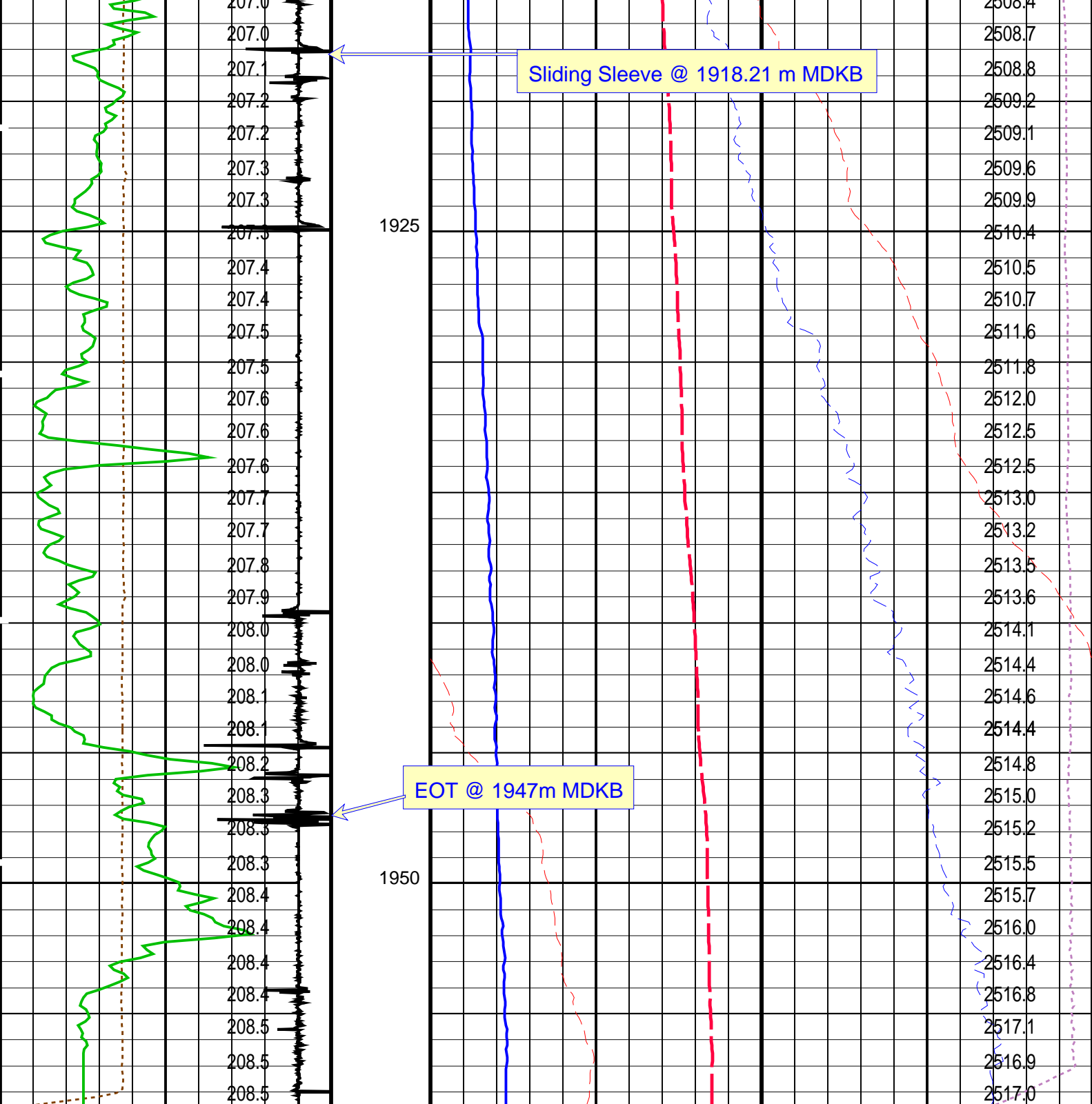
MWPT-CA16C0-147



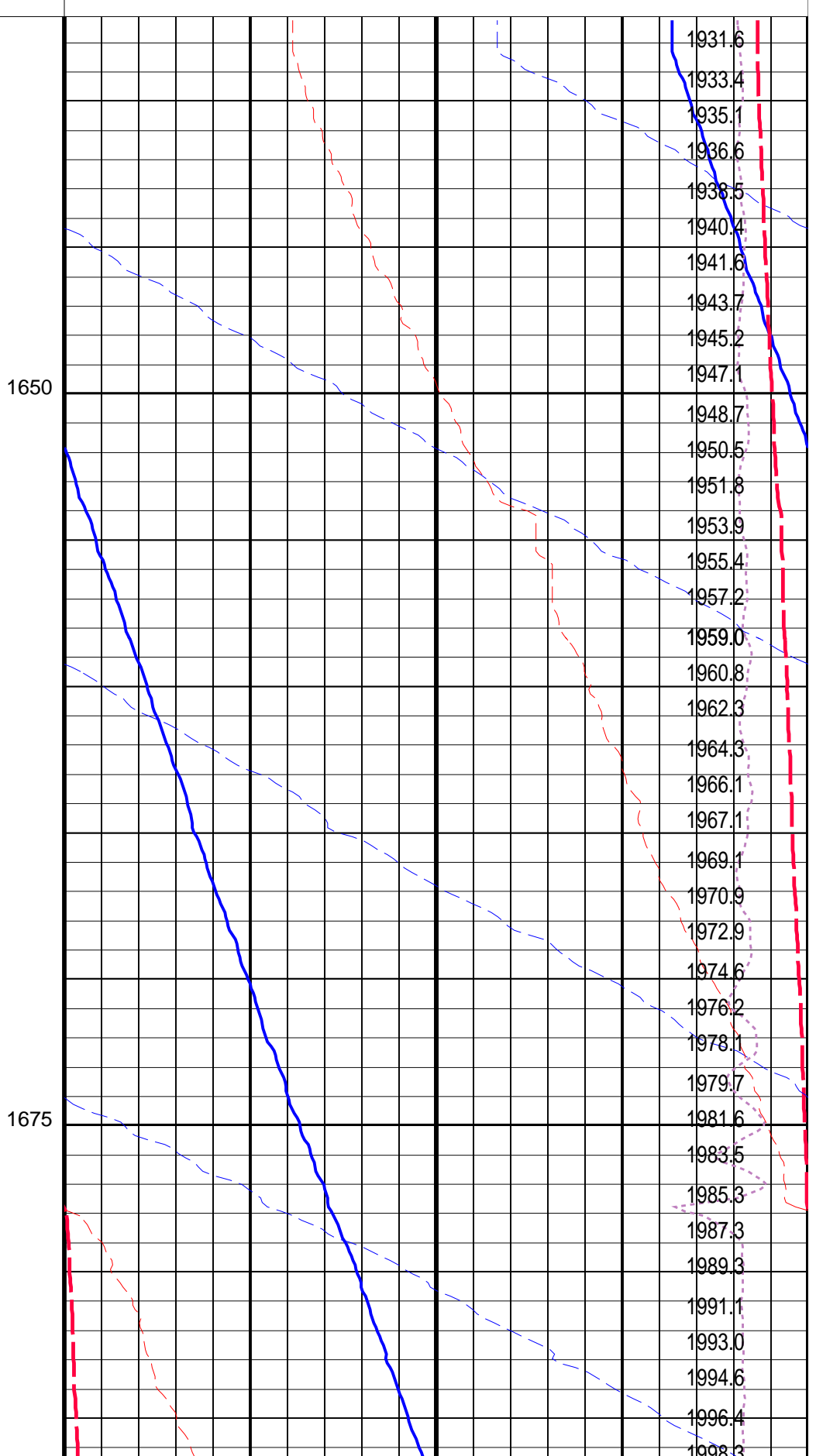
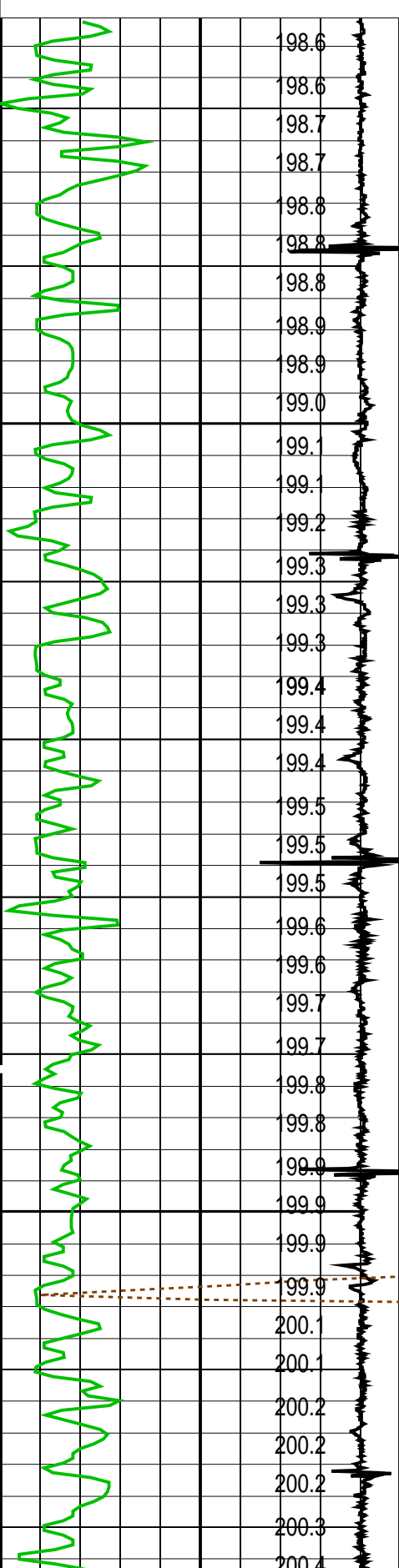
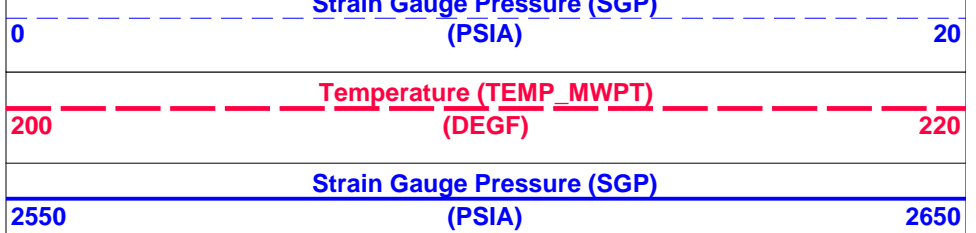
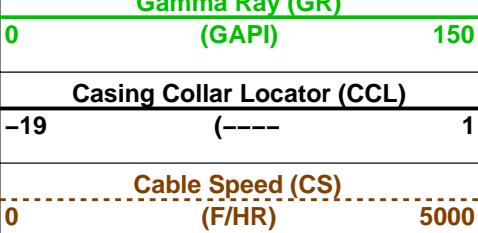


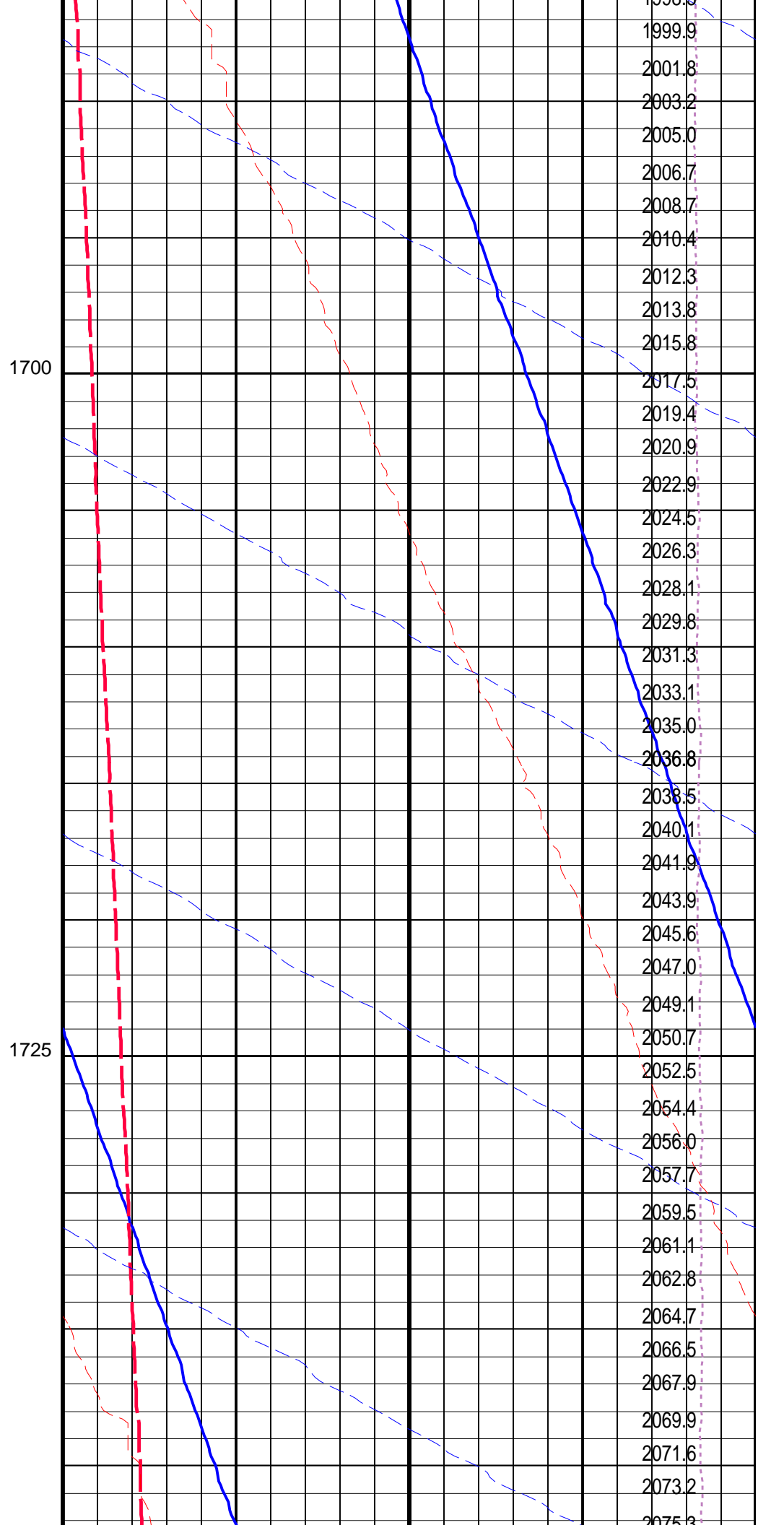
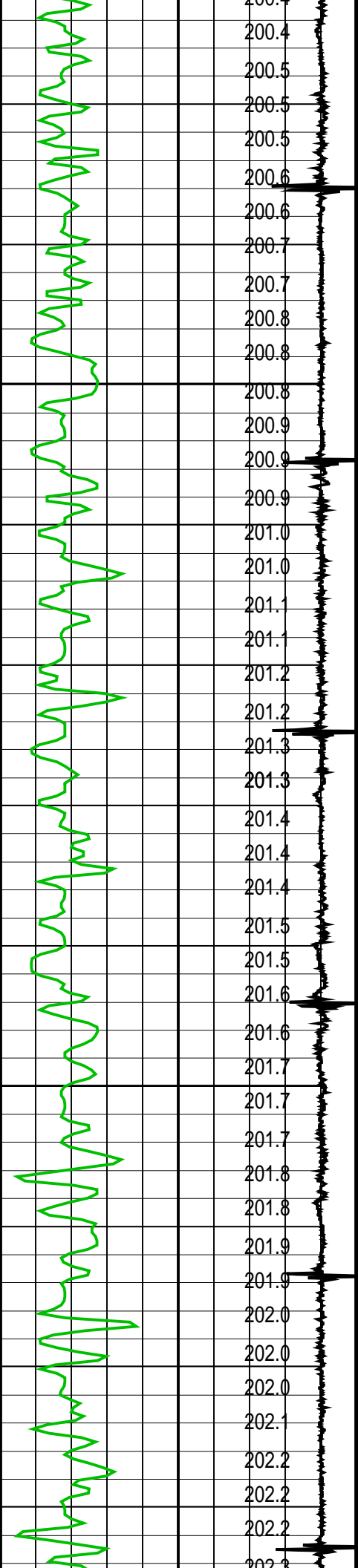
PIP SUMMARY		
Time Mark Every 60 S		
Parameters		
DLIS Name	Description	Value
MWPT-CA: MEASUREMENT WHILE PERFORATING TOOL		
DEVI FL CORR	Deviation Angle for Flow Line Correction	0 DEG

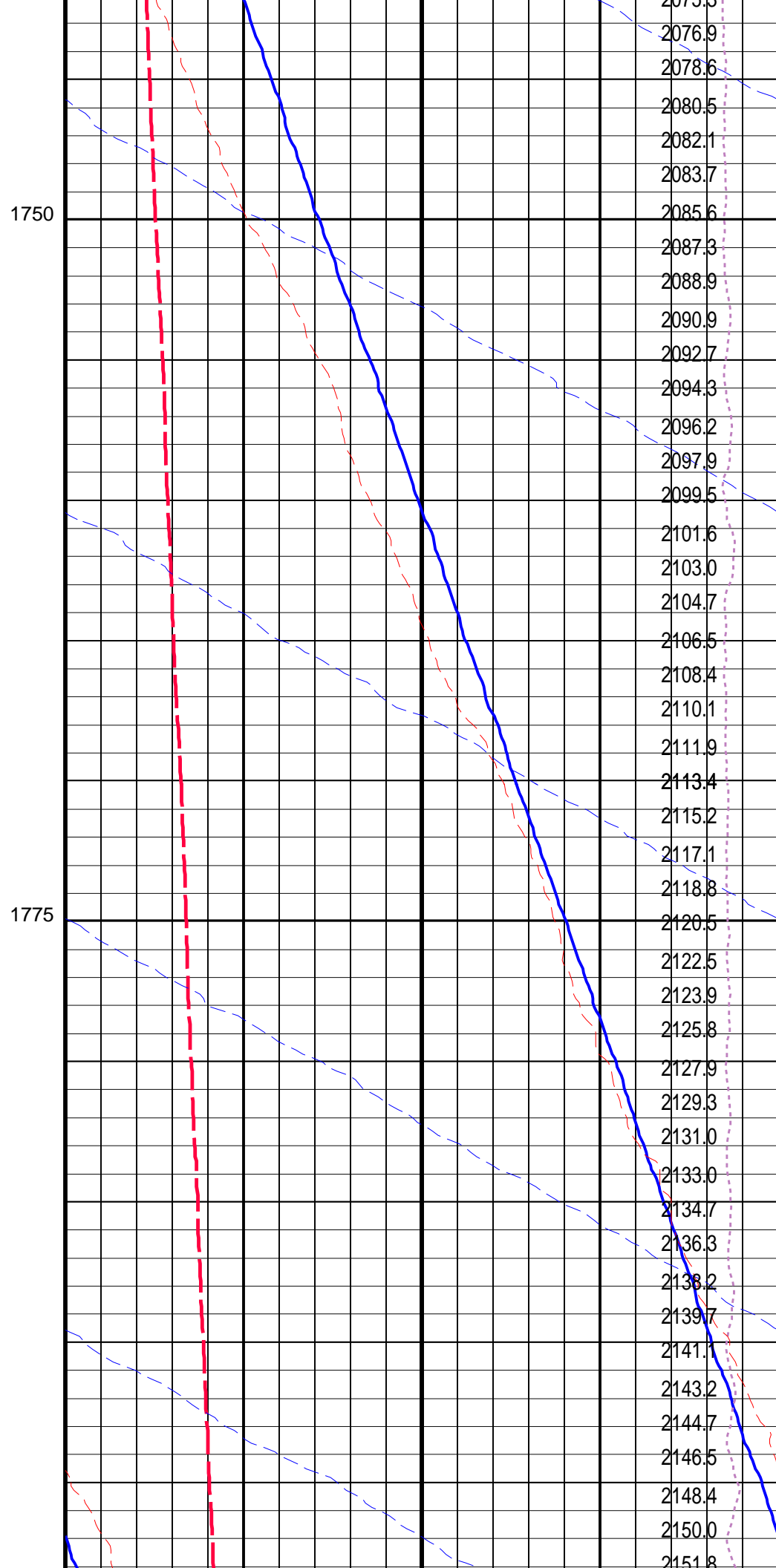
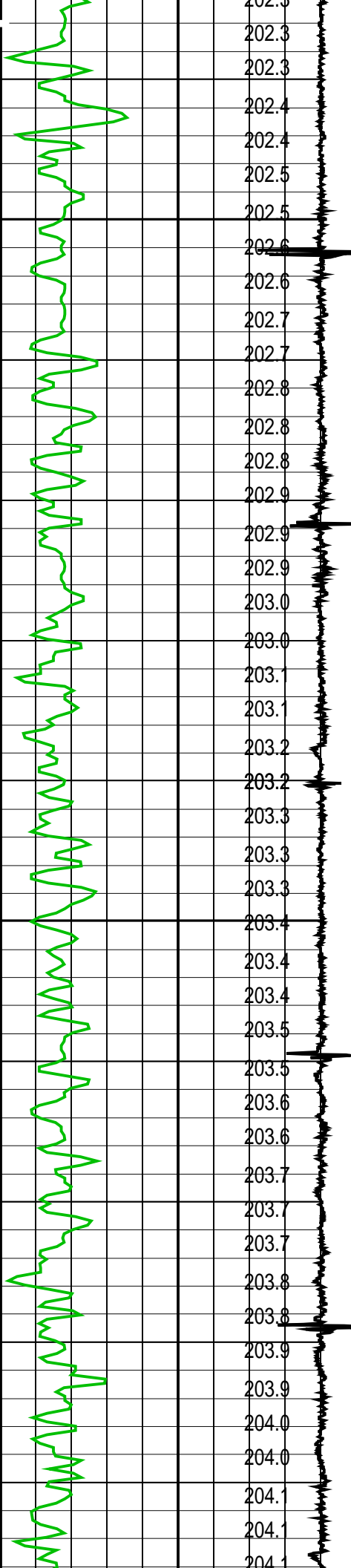


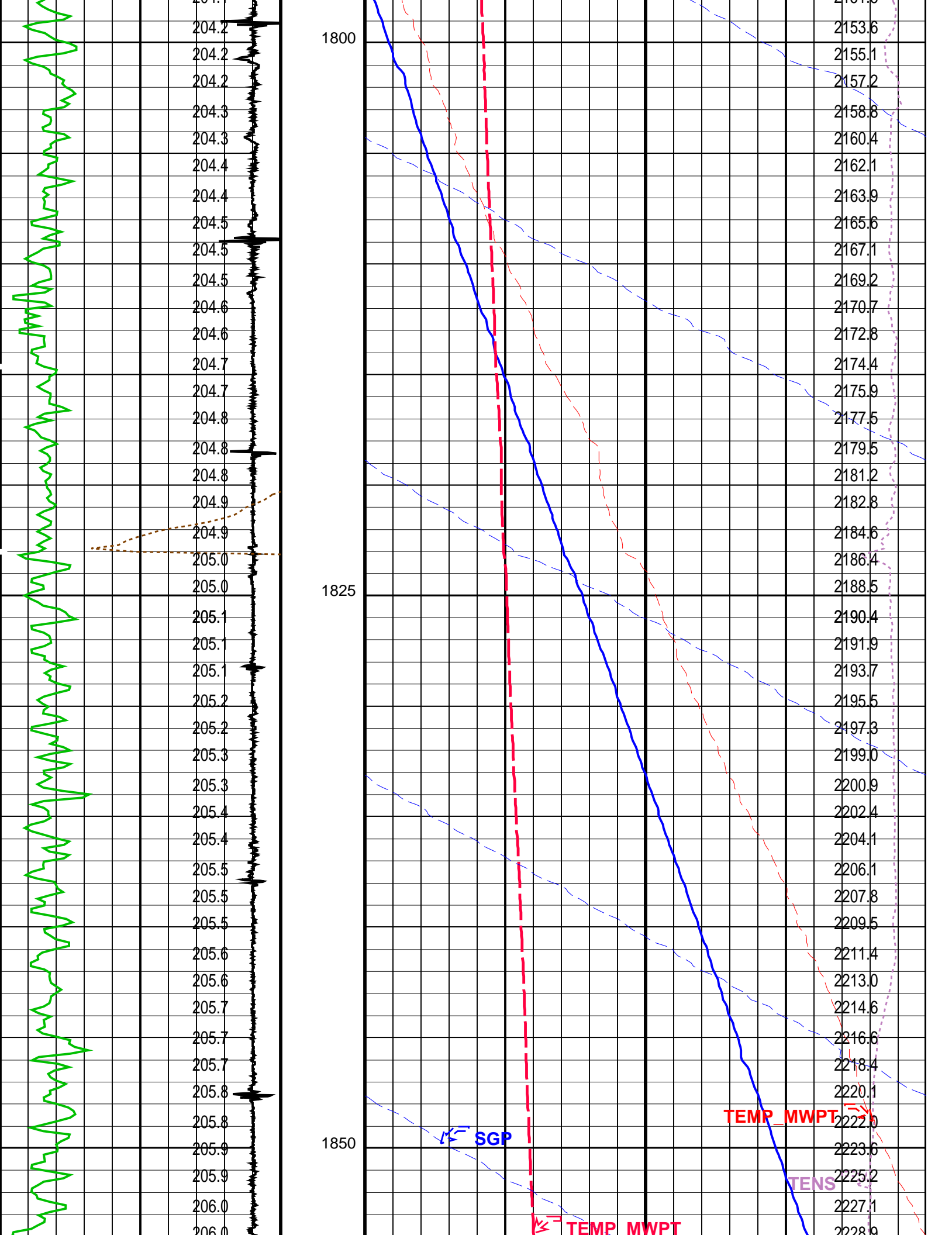


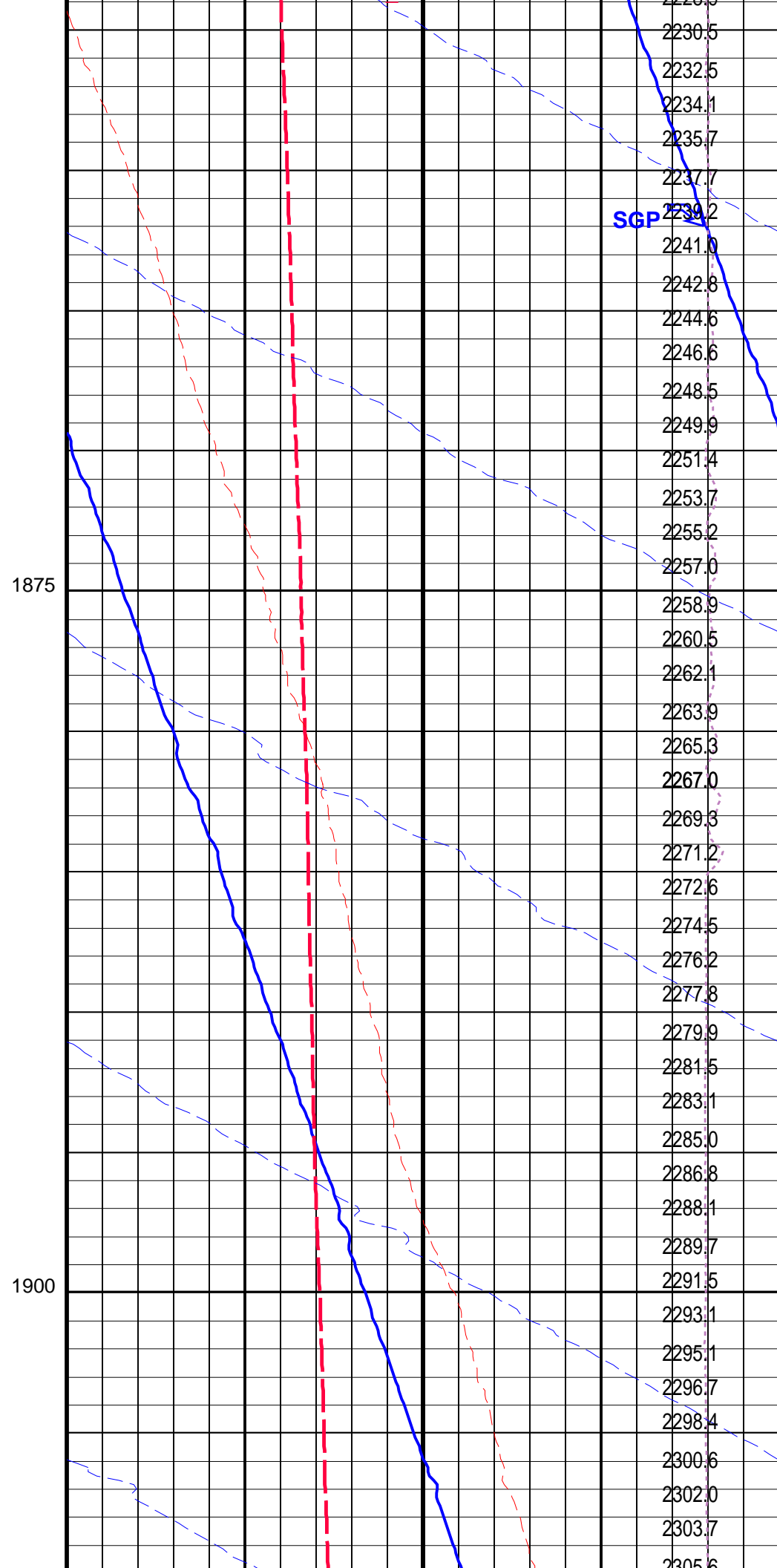
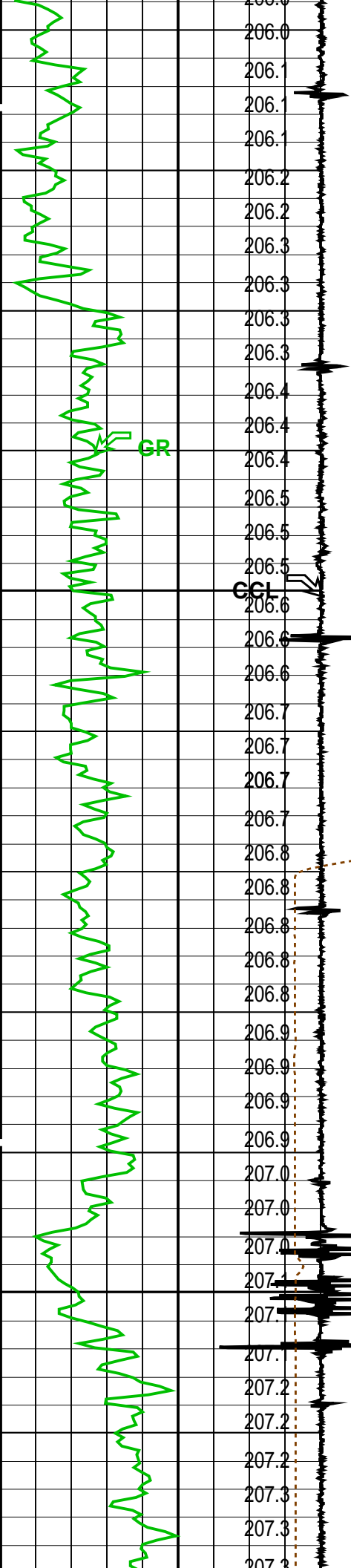
PIP SUMMARY									
Time Mark Every 60 S									
Parameters									
DLIS Name		Description				Value			
MWPT-CA: MEASUREMENT WHILE PERFORATING TOOL									
DEVI_FL_CORR		Deviation Angle for Flow Line Correction				0		DEG	
FLD		Flow Line Density				1		G/C3	
MWPT_NULL_SOURCE		MWPT NULL Temperature Source				TEMS			
MWPT_NULL_TEMP		MWPT NULL Temperature				0.0		DEGC	
System and Miscellaneous									
DO		Depth Offset for Playback				1.0		M	
PP		Playback Processing				NORMAL			
Format: MWP		Vertical Scale: 1:200				Graphics File Created: 18-Mar-2009 10:59			
OP System Version: 16C0-147									
MCM									
MWP_GUN		16C0-147		MWPT-CA		16C0-147			
MWGT-AA		16C0-147							
Input DLIS Files									
DEFAULT		PERFO_027LUP		FN:26		PRODUCER		18-Mar-2009 10:52 1957.4 M 1912.2 M	
Output DLIS Files									
DEFAULT		PERFO_029PUP		FN:28		PRODUCER		18-Mar-2009 10:59	
<div><div>Schlumberger</div><div>2.13" Dummy Plug Pass</div><div>MAXIS Field Log</div></div>									
Company: Esso Australia Pty Ltd. Well: 2									
Input DLIS Files									
DEFAULT		PERFO_008LUP		FN:7		PRODUCER		12-Mar-2009 15:23 1900.0 M 1558.3 M	
Output DLIS Files									
DEFAULT		PERFO_082PUP		FN:81		PRODUCER		20-Mar-2009 09:41 1978.6 M 1637.1 M	
OP System Version: 16C0-147									
MCM									
MWPT-CA		16C0-147		MWGT-AA		16C0-147			
PIP SUMMARY									
Time Mark Every 60 S									
								Pressure (SGP) (PSIA)	
				Temperature (TEMP_MWPT) (DEGF)		Tension (TENS) (LBF)			
						02000			
CCL From CCL to T1						Temperature (TEMP_MWPT) (DEGF)			
						02			
Gamma Ray (GR)				Strain Gauge Pressure (SGP)					

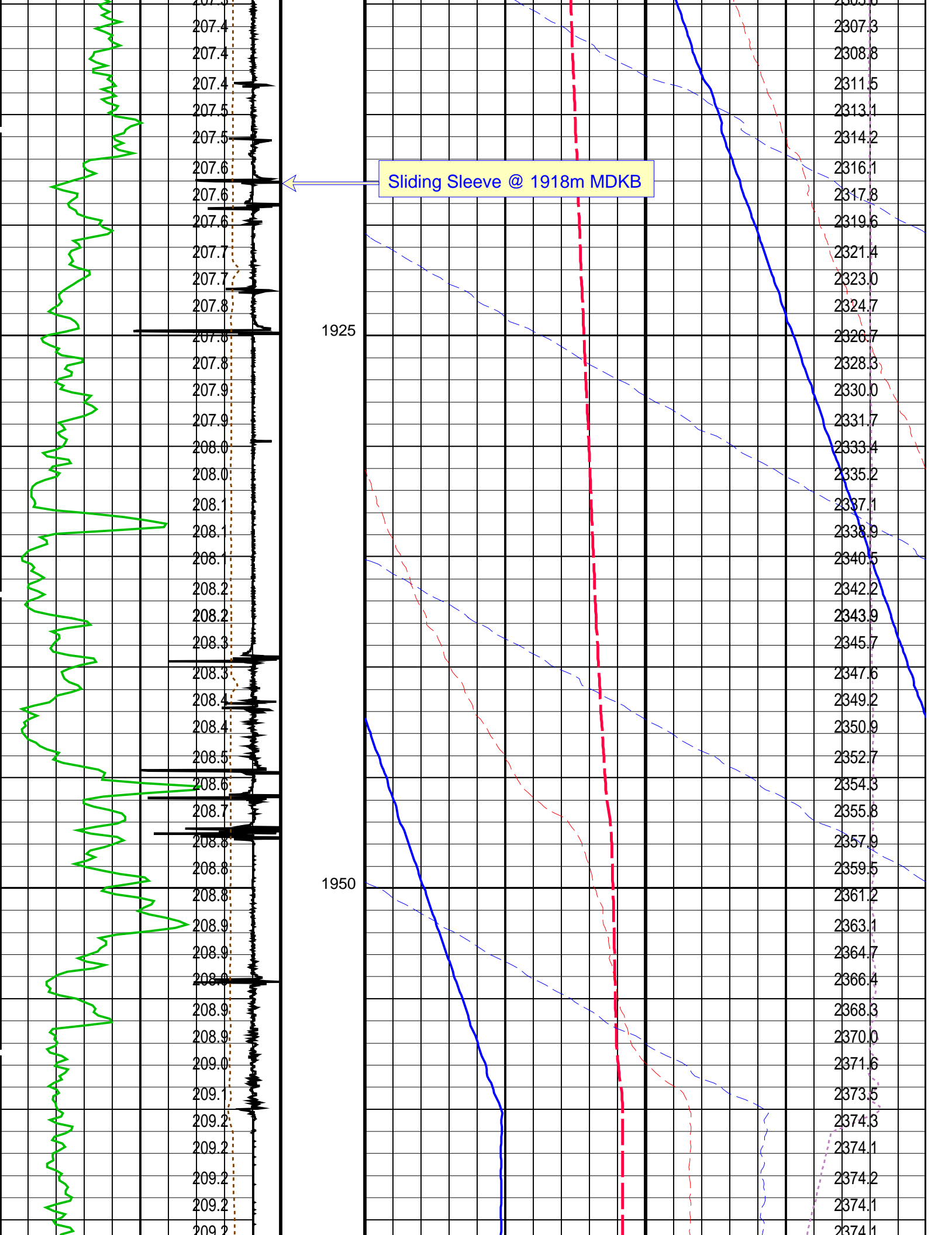


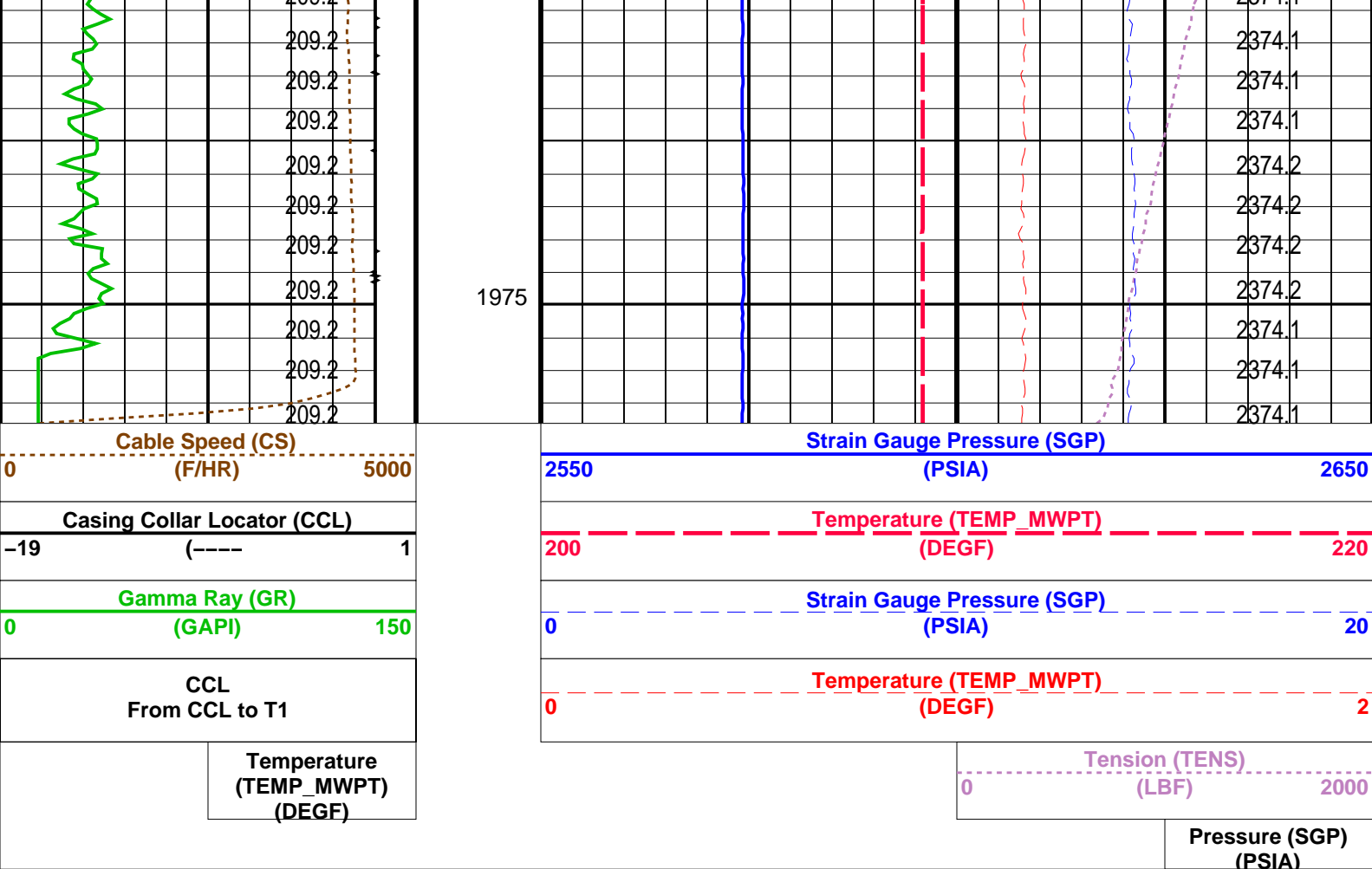












PIP SUMMARY

Time Mark Every 60 S

Parameters			
DLIS Name	Description	Value	
MWPT-CA: MEASUREMENT WHILE PERFORATING TOOL			
DEVI_FL_CORR	Deviation Angle for Flow Line Correction	0	DEG
FLD	Flow Line Density	1	G/C3
MWPT_NULL_SOURCE	MWPT NULL Temperature Source	TEMS	
MWPT_NULL_TEMP	MWPT NULL Temperature	0.0	DEGC
System and Miscellaneous			
DO	Depth Offset for Playback	78.6	M
PP	Playback Processing	NORMAL	

Format: MWP Vertical Scale: 1:200 Graphics File Created: 20-Mar-2009 09:41

OP System Version: 16C0-147

MCM

MWPT-CA	16C0-147	MWGT-AA	16C0-147
---------	----------	---------	----------

Input DLIS Files					
DEFAULT	PERFO_008LUP	FN:7	PRODUCER	12-Mar-2009 15:23	1900.0 M 1558.3 M
Output DLIS Files					
DEFAULT	PERFO_082PUP	FN:81	PRODUCER	20-Mar-2009 09:41	

Rig: **Prod4 / Crane**

Country: **Australia**

2 1/8" Powerjet MWPT Perforation Record

7" Posiset Plug Setting Record