

Company: Esso Australia Pty Ltd.

Well: BREAM B 16  
Field: BREAM B  
Rig: Crane / Prod # 4 Country: Australia

2-1/8" Phased Powerjet MWPT  
Perforation Record  
7" Posiset Plug Setting Record

Rig: Crane / Prod # 4  
Field: BREAM B  
Location: Gippsland  
Well: BREAM B 16  
Company: Esso Australia Pty Ltd.

LOCATION			
Gippsland		Elev.:	K.B. 47.17 m
Basin			G.L. 47.17 m
Bass Strait		D.F.	-61.00 m
Permanent Datum:	M.S.L.	Elev.:	0.00 m
Log Measured From:	K.B.	47.17 m	above Perm. Datum
Drilling Measured From:	K.B.		
State:	Max. Well Deviation	Longitude	Latitude
Victoria	58 deg	148°06'15.37E	038°35'40.34S

Logging Date	2-Apr-2010		
Run Number	1 through 5		
Depth Driller	2199 m		
Schlumberger Depth	2190 m		
Bottom Log Interval	2158 m		
Top Log Interval	2126 m		
Casing Fluid Type	Production Fluids		
Salinity			
Density			
Fluid Level			
BIT/CASING/TUBING STRING			
Bit Size	8.500 in		
From	836 m		
To	2641 m		
Casing/Tubing Size	7.000 in		
Weight	26 lbm/ft		
Grade	L-80		
From	27 m		
To	2626 m		
Maximum Recorded Temperatures	222 degF		
Logger On Bottom	2-Apr-2010		14:35
Unit Number	889	Prod 4 / AUSL	
Recorded By	S Gilbert		
Witnessed By	B White		

PVT DATA			
Oil Density			
Water Salinity			
Gas Gravity			
Bo			
Bw			
1/Bg			
Bubble Point Pressure			
Bubble Point Temperature			
Solution GOR			
Maximum Deviation	58 deg		
CEMENTING DATA			
Primary/Squeeze	Primary		
Casing String No			
Lead Cement Type			
Volume			
Density			
Water Loss			
Additives			
Tail Cement Type			
Volume			
Density			
Water Loss			
Additives			
Expected Cement Top			
Logging Date			
Run Number			
Depth Driller			
Schlumberger Depth			
Bottom Log Interval			
Top Log Interval			
Casing Fluid Type			
Salinity			
Density			
Fluid Level			
BIT/CASING/TUBING STRING			
Bit Size			
From			
To			
Casing/Tubing Size			
Weight			
Grade			
From			
To			
Maximum Recorded Temperatures			
Logger On Bottom			
Unit Number			
Recorded By			
Witnessed By			

## DEPTH SUMMARY LISTING

Date Created: 1-APR-2010 15:02:37

### Depth System Equipment

Depth Measuring Device		Tension Device		Logging Cable	
Type:	IDW-EB	Type:	PSDS/OSDS	Type:	2-32ZT
Serial Number:	6373	Serial Number:	325357	Serial Number:	208558
Calibration Date:	9-Oct-2009	Calibration Date:	3-Mar-2010	Length:	5920 M
Calibrator Serial Number:	30	Calibrator Serial Number:	1170	Conveyance Method: Wireline Rig Type: Offshore Fixed	
Calibration Cable Type:	2-32ZT	Number of Calibration Points:	10		
Wheel Correction 1:	0	Calibration RMS:	15		
Wheel Correction 2:	2	Calibration Peak Error:	27		

### Depth Control Parameters

Log Sequence:	Subsequent Trip To the Well
Reference Log Name:	BREAM B 16 Correlation Log
Reference Log Run Number:	
Reference Log Date:	
Subsequent Trip Down Log Correction:	0.00 M

### Depth Control Remarks

1. Rigged up on main deck using platform crane
2. Log Correlated to SOLAR composite Log Provided by Client
3. IDW used as Primary Depth Control.
4. Z-chart used as Secondary Depth Control.
5. All Depth are MDKB unless noted.
6.

#### DISCLAIMER

THE USE OF AND RELIANCE UPON THIS RECORDED-DATA BY THE HEREIN NAMED COMPANY (AND ANY OF ITS AFFILIATES, PARTNERS, REPRESENTATIVES, AGENTS, CONSULTANTS AND EMPLOYEES) IS SUBJECT TO THE TERMS AND CONDITIONS AGREED UPON BETWEEN SCHLUMBERGER AND THE COMPANY, INCLUDING: (a) RESTRICTIONS ON USE OF THE RECORDED-DATA; (b) DISCLAIMERS AND WAIVERS OF WARRANTIES AND REPRESENTATIONS REGARDING COMPANY'S USE OF AND RELIANCE UPON THE RECORDED-DATA; AND (c) CUSTOMER'S FULL AND SOLE RESPONSIBILITY FOR ANY INFERENCE DRAWN OR DECISION MADE IN CONNECTION WITH THE USE OF THIS RECORDED-DATA.

OTHER SERVICES1
OS1: None

REMARKS: RUN NUMBER 1
Log correlated to ExxonMobil Solar Composite Log supplied with logging program.
Objectives: Perforate the well over the intervals 2126m to 2128m MDKB .
using 2-1/8" 6 SPF, 45 deg phased Powerjet guns with MWPT.
Set a 7" Posiset plug with top of seal at 2158m MDKB then dump approximately 1m of cement on top.
Maximum Deviation = 58deg @ 2045m MDKB
HUD: 2190 m MDKB

Gun#1
Top Shot @ 2126 m MDKB
CCL to Top Shot= 3.5 m
CCL Stop Depth= 2122.5 m MKDB
7" Posiset Plug
Top of Seal @ 2158m MDKB
CCL to Top of Seal = 6.8m
CCL Stop Depth = 2151.2m MDKB
2.13 Dummy Plug Ran to ensure access for Posiset Plug.
Schlumberger crews:B Glover , G Martin

RUN 1 SERVICE ORDER #: B297-00026 PROGRAM VERSION: 17C0-154 FLUID LEVEL:					
LOGGED INTERVAL	START	STOP	LOGGED INTERVAL	START	STOP

[illegible]

RUN 1

RUN 2

SURFACE EQUIPMENT		SURFACE EQUIPMENT	
WITM (SHM)		MWPM-AA	
DOWNHOLE EQUIPMENT		DOWNHOLE EQUIPMENT	
SWBS-B 785	12.74	SWBS-B 785	12.22
SWBS-B 786	12.06	SWBS-B 786	11.54
SWBS-B 787	11.37	SWBS-B 787	10.85
SWBS-B 785	10.69	SWBS-B 785	10.16
SWBS-B 786	10.00	SWBS-B 786	9.48
SWHS-A 759	9.31	SWHS-A 759	8.79
CCL-PCCL-LA 08055 CCL-PCCL-LA 8055	8.96	AH-124	8.44
MPSU-BA 20 MPSU-BA 20	8.50	MWGT-AA MWPG-AA 69 MWGH-AA 69	8.23
		MWPG GR	2.41
		MWPT-CA MWPH-AA 74 MWPS-AA 74	7.26
			TOOL ZERO

**Left Diagram:**

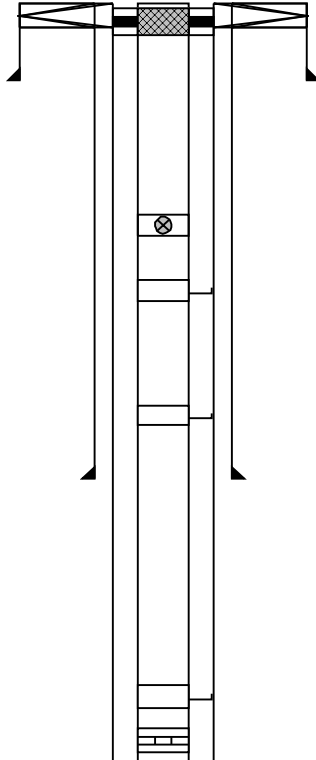
- Component 1: MPEX-7" 26lb/ft Posiset Plug 20
- Component 2: MPEX-7" 26lb/ft Posiset Plug 20
- Total Length: 2.26

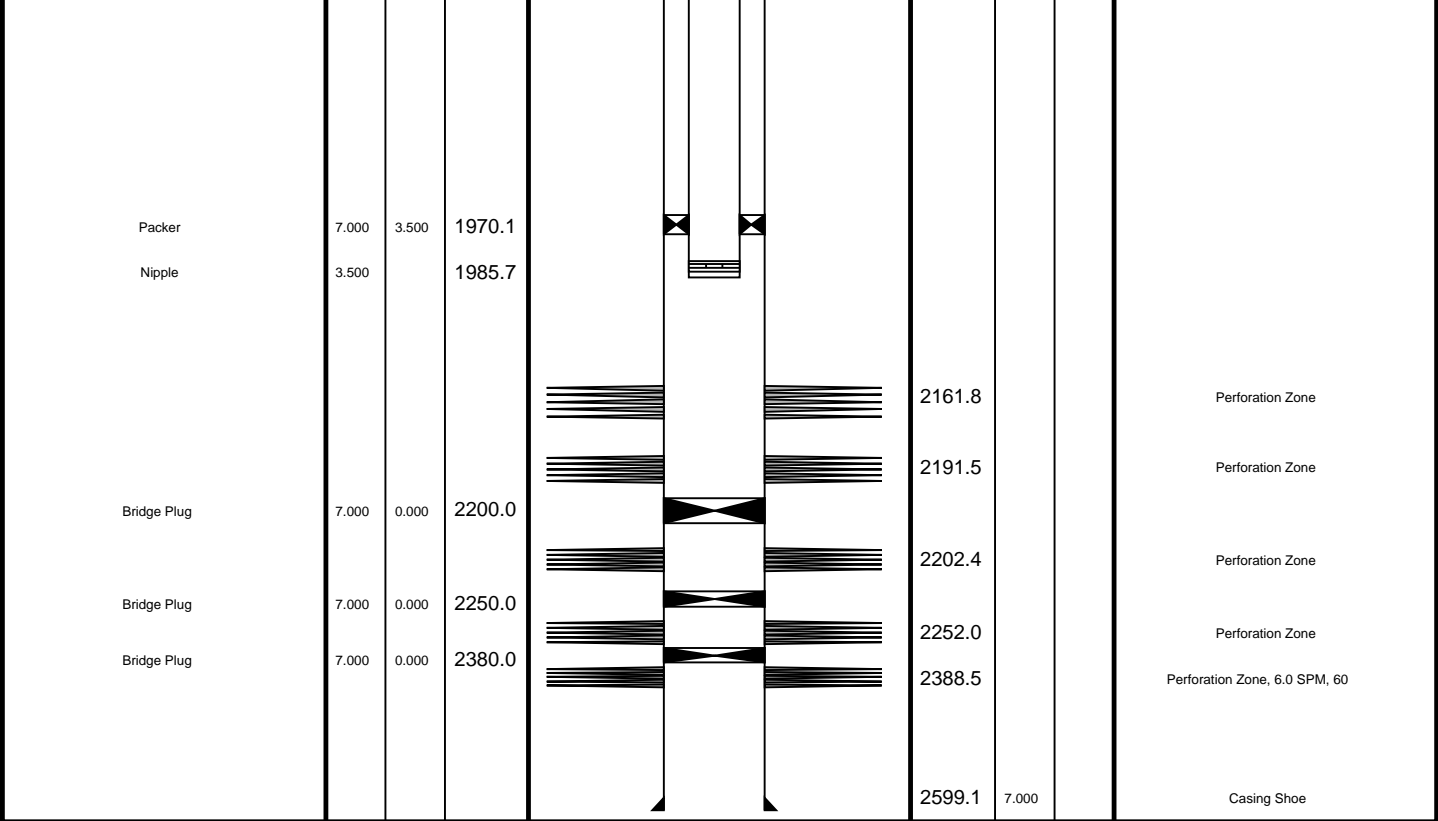
**Right Diagram:**

- Component 1: AH-Flex-Joint 42
- Component 2: SAH-G
- Component 3: MPD-MB
- Component 4: AH-ESIC
- Component 5: MWP\_GUN
- Component 6: GUN-2m 2 1/8" Phased Enerjet Gun
- Total Length: 2.40

**Common Labels:**

- TOOL BOTTOM
- MAXIMUM STRING DIAMETER 2.13 IN
- MEASUREMENTS RELATIVE TO TOOL ZERO
- ALL LENGTHS IN METERS

Production String	(in)		(m)	Well Schematic	(m)	(in)		Casing String
	OD	ID				MD	MD	
Tubing	3.500		27.6		27.0	9.625		Casing String
Tubing Hanger	7.000	3.500	25.0		27.0	20.000	9.625	Liner Hanger
					153.0	20.000		Casing Shoe
					26.0	20.000		Casing String
Shutin Valve	3.500		450.3					
Gas Lift Mandrel	3.500		526.2					
Gas Lift Mandrel	3.500		766.0					
Gas Lift Mandrel	3.500		983.0					
Nipple	3.500		999.6					
					808.9	9.625		Casing Shoe

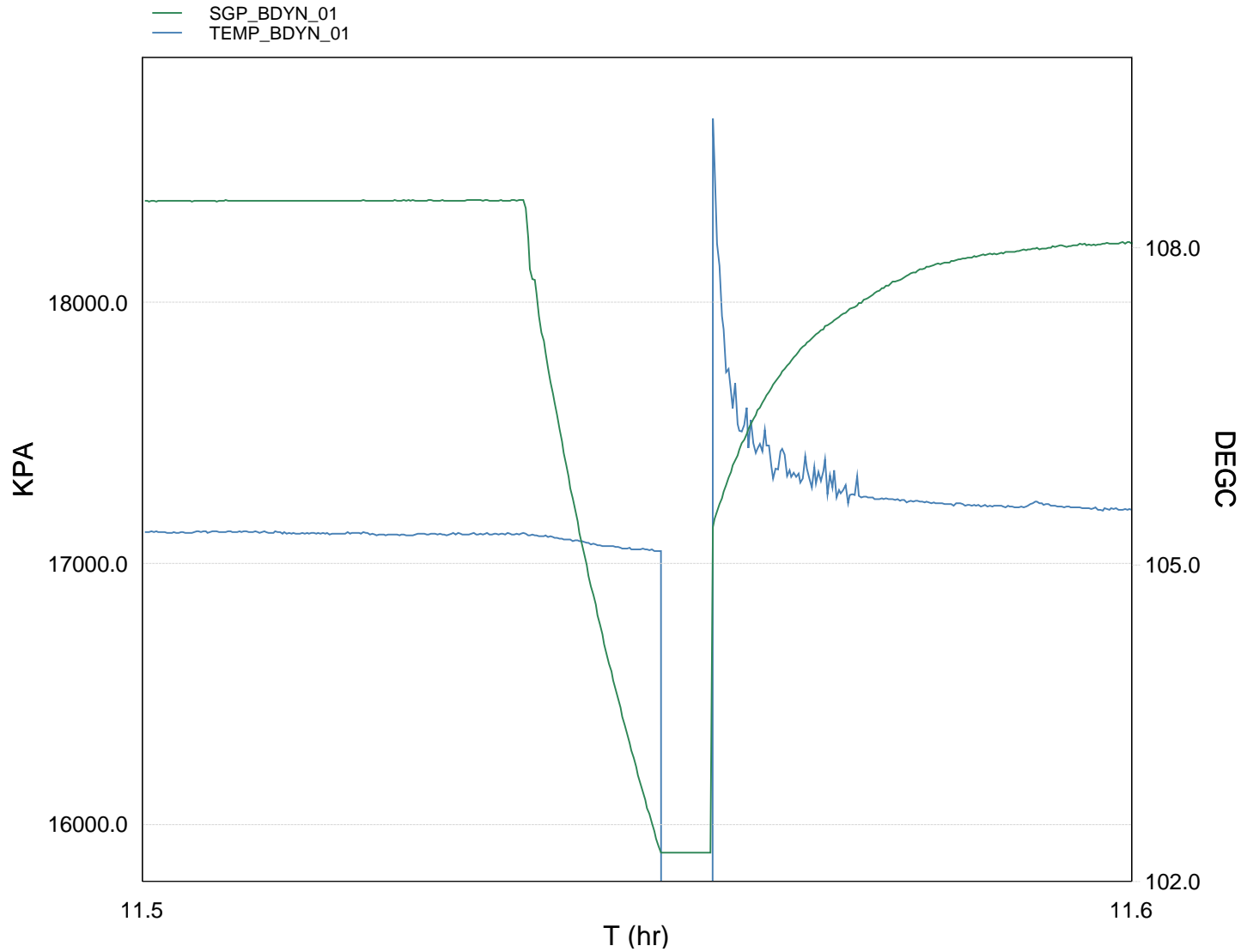


## Job Events Summary

MAXIS Field Log

### Schlumberger Job Event Summary

	Time	Elapsed Time	Depth (M)	File
Log Pass (up)	2-Apr-2010 14:38	000:10	2202.0 - 1945.8	PSP_017LUP
Log Pass (up)	3-Apr-2010 10:06	000:04	2008.8 - 1984.4	MPBT_026LUP
Simulated Log	3-Apr-2010 10:25	000:24		MPBT_029LUP
Log Pass (up)	3-Apr-2010 10:51	000:03	2151.1 - 2098.5	MPBT_030LUP
Log Pass (up)	3-Apr-2010 13:43	000:05	2148.2 - 2098.5	PERFO_038LUP
Log Pass (up)	4-Apr-2010 11:18	000:06	2147.9 - 2094.7	PERFO_047LUP
Log Pass (up)	4-Apr-2010 11:26	000:31	2140.9 - 2087.0	PERFO_048LUP
Station Log	4-Apr-2010 11:30	000:22	2122.5	PERFO_049LTP



TIME	KPA	PSIA	DEGF
------	-----	------	------

2220.0	18388.5470	2667.0372	221.5473
2250.0	18389.4335	2667.1660	221.5684
2280.0	18389.5482	2667.1826	221.5550
2310.0	18387.8085	2666.9303	221.5368
2340.0	18391.0943	2667.4068	221.5314
2370.0	18389.4844	2667.1733	221.5135
2400.0	17536.4172	2543.4463	221.4420
2430.0	16262.2014	2372.2002	221.2802
2460.0	16262.2014	2372.2002	221.2802
2490.0	17172.2002	2472.2002	221.2802
2520.0	17536.4172	2543.4463	221.4420
2550.0	17536.4172	2543.4463	221.4420
2580.0	17536.4172	2543.4463	221.4420
2610.0	17536.4172	2543.4463	221.4420
2640.0	17536.4172	2543.4463	221.4420
2670.0	17536.4172	2543.4463	221.4420
2700.0	17536.4172	2543.4463	221.4420
2730.0	17536.4172	2543.4463	221.4420
2760.0	17536.4172	2543.4463	221.4420
2790.0	17536.4172	2543.4463	221.4420
2820.0	17536.4172	2543.4463	221.4420
2850.0	17536.4172	2543.4463	221.4420
2880.0	17536.4172	2543.4463	221.4420
2910.0	17536.4172	2543.4463	221.4420
2940.0	17536.4172	2543.4463	221.4420
2970.0	17536.4172	2543.4463	221.4420
3000.0	17536.4172	2543.4463	221.4420

2430.0	16363.3014	2373.3003	221.2803
2460.0	15891.9453	2304.9358	112.2004 GUN Fired
2490.0	17610.1336	2554.1379	222.8133
2520.0	17914.8792	2598.3375	222.4690
2550.0	18081.1349	2622.4510	222.1232
2580.0	18169.6649	2635.2911	222.0197
2610.0	18202.9012	2640.1116	222.0482
2640.0	18222.7359	2642.9885	221.9624
2670.0	18232.4634	2644.3994	221.9096
2700.0	18238.5140	2645.2769	221.9059
2730.0	18224.0003	2643.1717	221.8642
2760.0	18176.6224	2636.3003	221.8524
2790.0	18117.4601	2627.7196	221.8380
2820.0	18096.5660	2624.6890	221.8314
2850.0	18081.1641	2622.4553	221.8466
2880.0	18078.2971	2622.0393	221.8378
2910.0	18086.3841	2623.2122	221.8496
2940.0	18240.2967	2645.5355	221.8785
2970.0	18281.0838	2651.4512	221.8497
3000.0	18292.6387	2653.1269	221.8454
3030.0	18306.9057	2655.1962	221.8300
3060.0	18314.4297	2656.2875	221.8083
3090.0	18316.6505	2656.6095	221.8122
3120.0	18326.5509	2658.0455	221.7971
3150.0	18343.1425	2660.4519	221.7870
3180.0	18340.8556	2660.1203	221.7887
3210.0	18346.2595	2660.9040	221.7950
3240.0	18346.7232	2660.9714	221.7775
3270.0	18346.3291	2660.9141	221.7847
3300.0	18348.8576	2661.2809	221.7796
3330.0	18345.2510	2660.7579	221.7781
3360.0	18543.3692	2689.4923	221.8308
3390.0	18566.5074	2692.8484	221.8502
3420.0	18561.6254	2692.1402	221.8401
3450.0	18560.9310	2692.0395	221.8198
3480.0	18565.4290	2692.6919	221.8101
3510.0	18563.4459	2692.4042	221.8366
3540.0	18569.2812	2693.2505	221.8239

**Schlumberger**

**Gun Shooting Pass**

MAXIS Field Log

Company: Esso Australia Pty Ltd.

Well: BREAM B 16

### Output DLIS Files

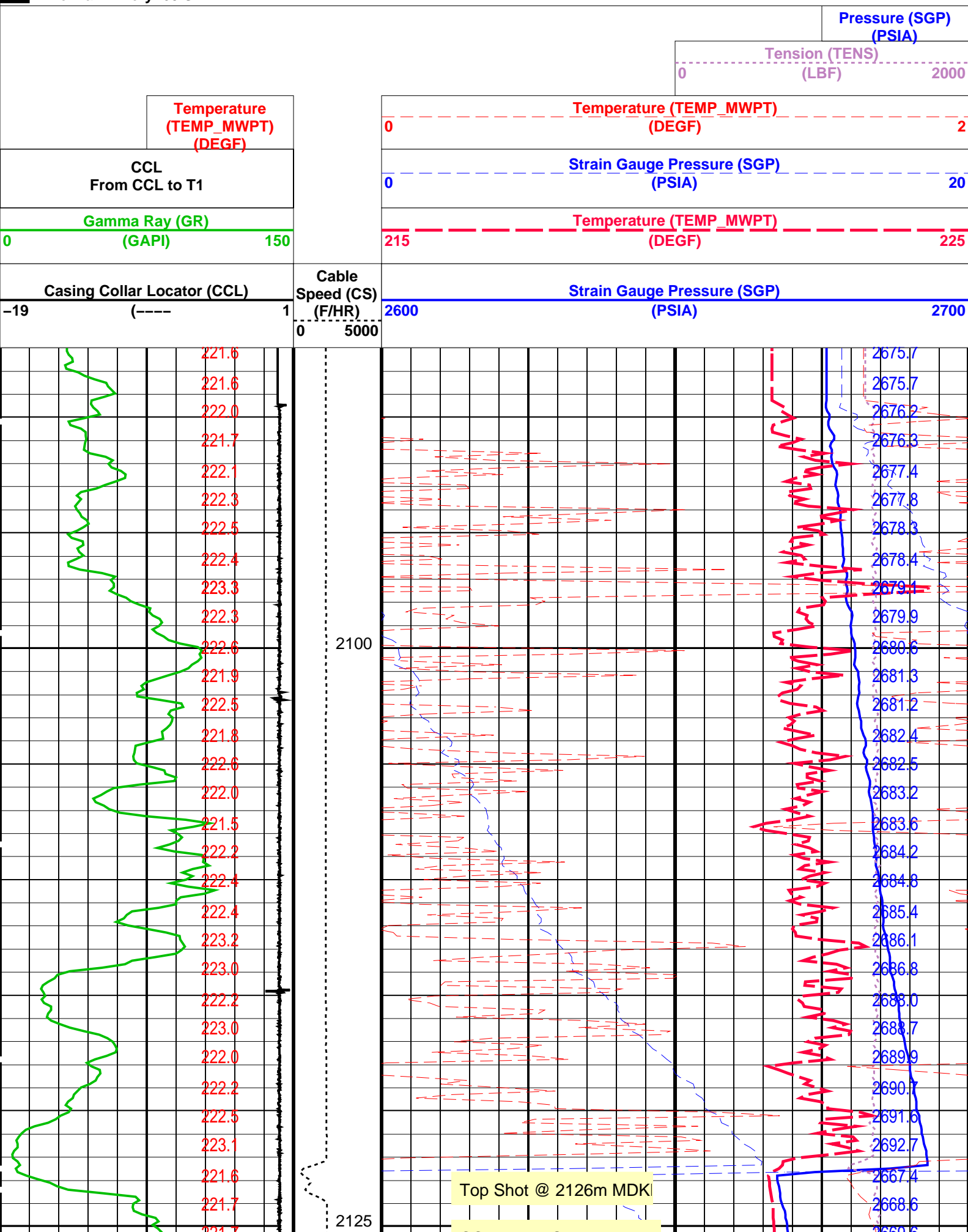
DEFAULT	PERFO_048LUP	FN:54	PRODUCER	04-Apr-2010 11:26	2140.9 M	2087.0 M
---------	--------------	-------	----------	-------------------	----------	----------

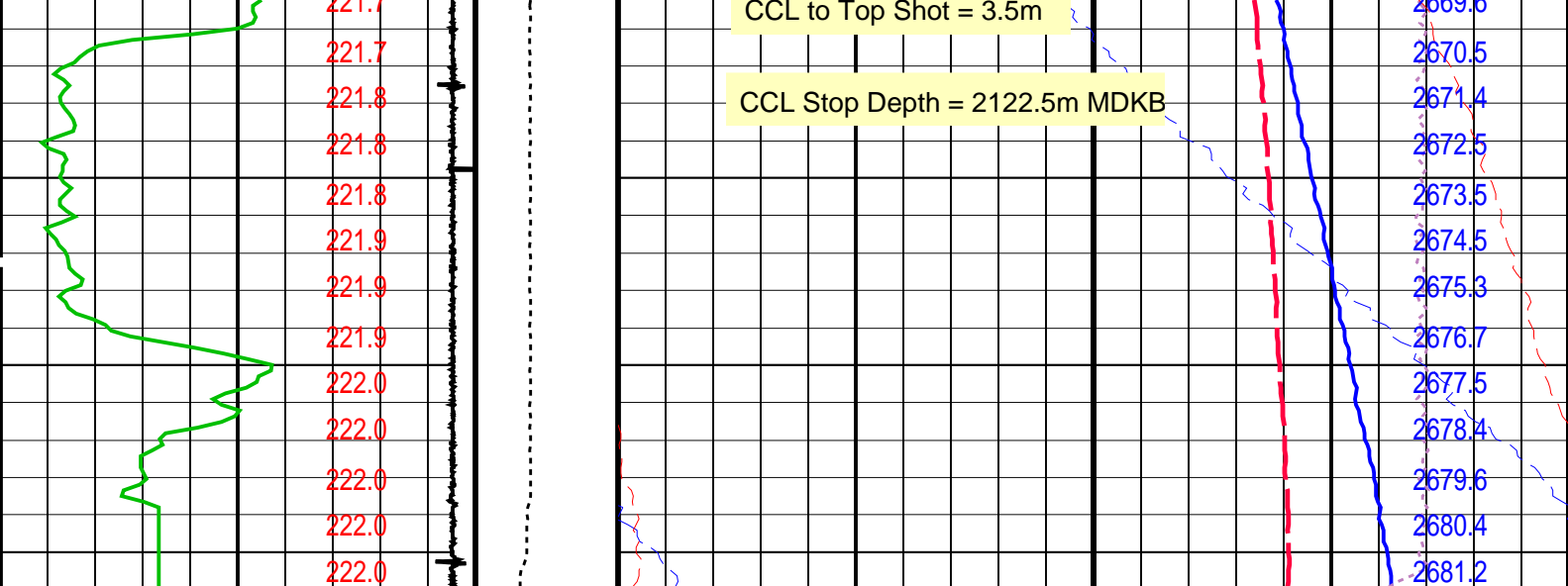
**OP System Version: 17C0-154**

MWP_GUN	17C0-154	MWPT-CA	17C0-154
---------	----------	---------	----------

## PIP SUMMARY

Time Mark Every 60 S





Casing Collar Locator (CCL)		Cable Speed (CS)	Strain Gauge Pressure (SGP)	
-19	(----	1	2600	2700
		0 5000	(PSIA)	
Gamma Ray (GR)		Temperature (TEMP_MWPT)		
0	(GAPI) 150	215	(DEGF)	225
CCL From CCL to T1		Strain Gauge Pressure (SGP)		
		0	(PSIA)	20
Temperature (TEMP_MWPT) (DEGF)		Temperature (TEMP_MWPT) (DEGF)		
		0		2
		Tension (TENS) (LBF)		2000
		Pressure (SGP) (PSIA)		

#### PIP SUMMARY

Time Mark Every 60 S

### Parameters

DLIS Name	Description	Value
MWPT-CA: MEASUREMENT WHILE PERFORATING TOOL		
DEVI_FL_CORR	Deviation Angle for Flow Line Correction	0 DEG
FLD	Flow Line Density	1 G/C3
MWPT_NULL_SOURCE	MWPT NULL Temperature Source	TEMS
MWPT_NULL_TEMP	MWPT NULL Temperature	0.0 DEGC

Format: MWP Vertical Scale: 1:200 Graphics File Created: 04-Apr-2010 11:26

### OP System Version: 17C0-154

MWP_GUN	17C0-154	MWPT-CA	17C0-154
MWGT-AA	17C0-154		

### Output DLIS Files

DEFAULT	PERFO_048LUP	FN:54	PRODUCER	04-Apr-2010 11:26
---------	--------------	-------	----------	-------------------

**Schlumberger**

**Gun Correlation Pass**

Company: Esso Australia Pty Ltd. Well: BREAM B 16

Output DLIS Files

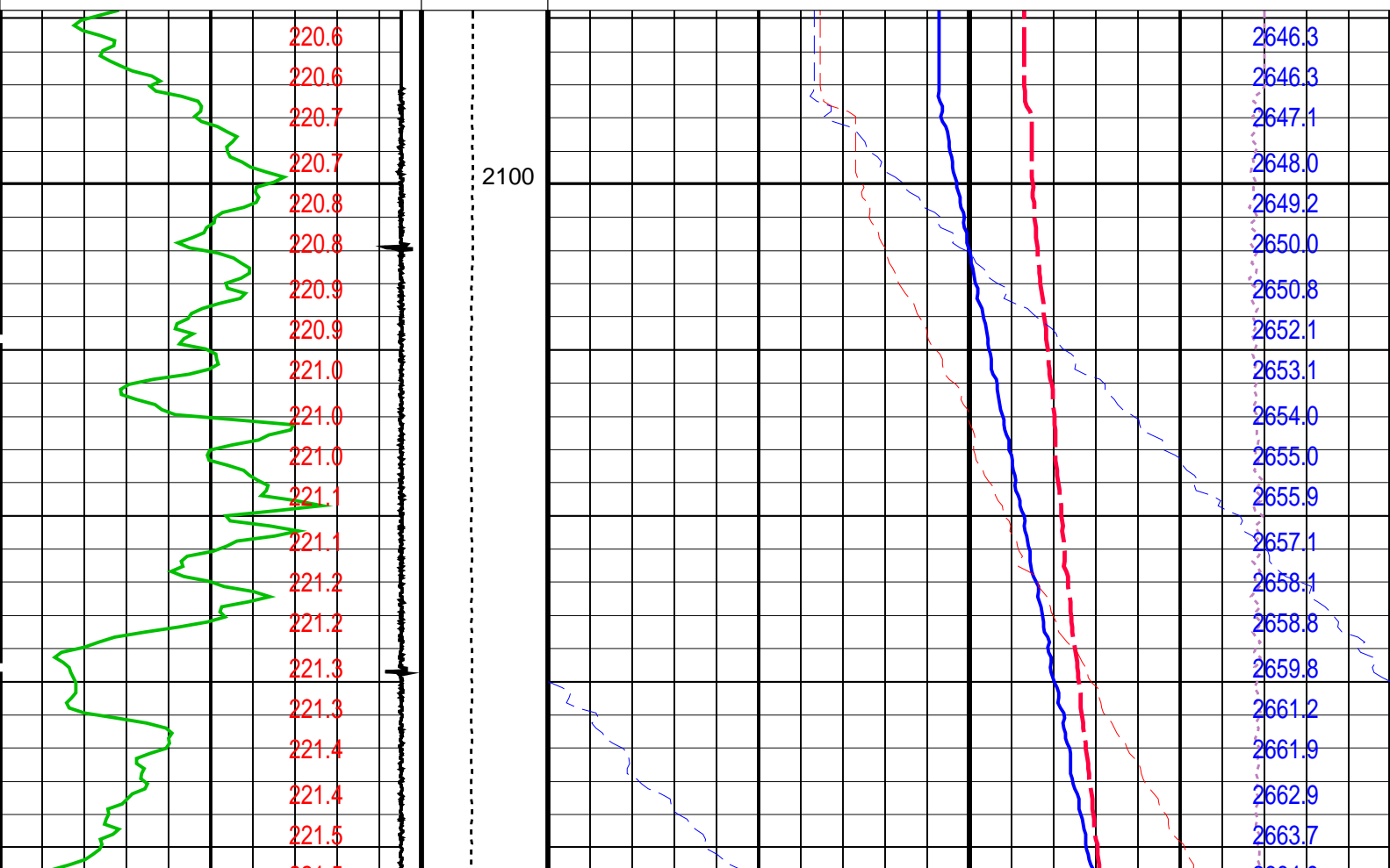
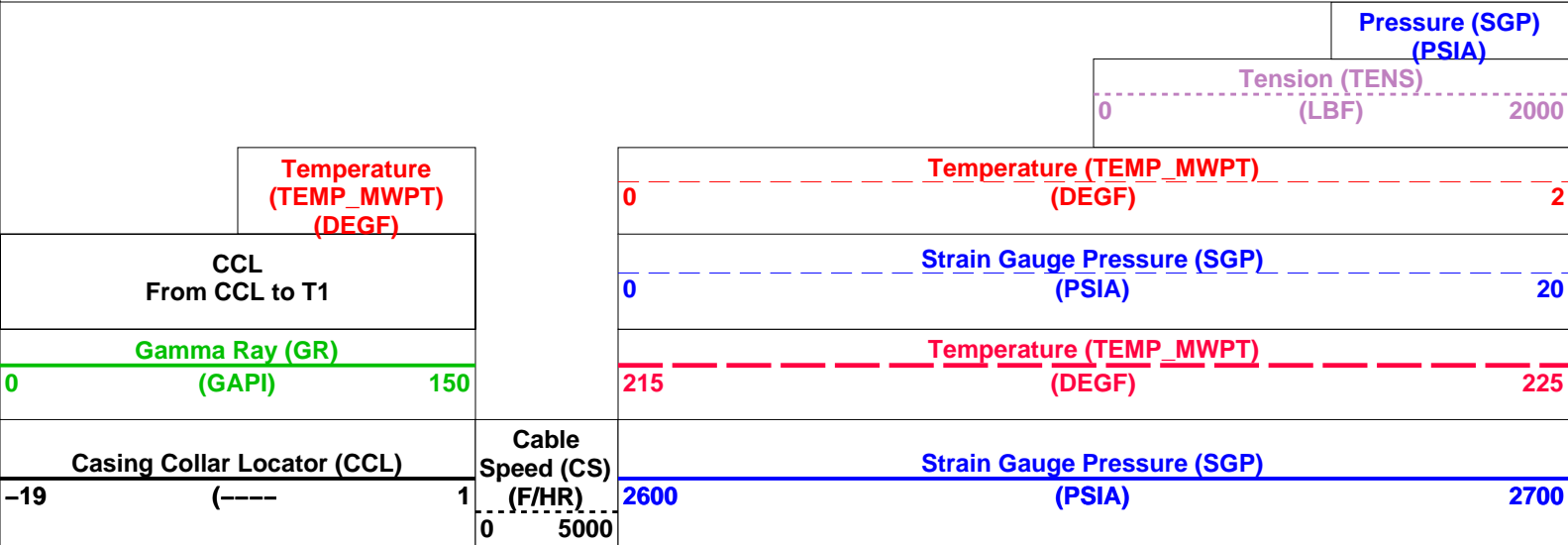
DEFAULT PERFO\_047LUP FN:53 PRODUCER 04-Apr-2010 11:18 2147.9 M 2094.7 M

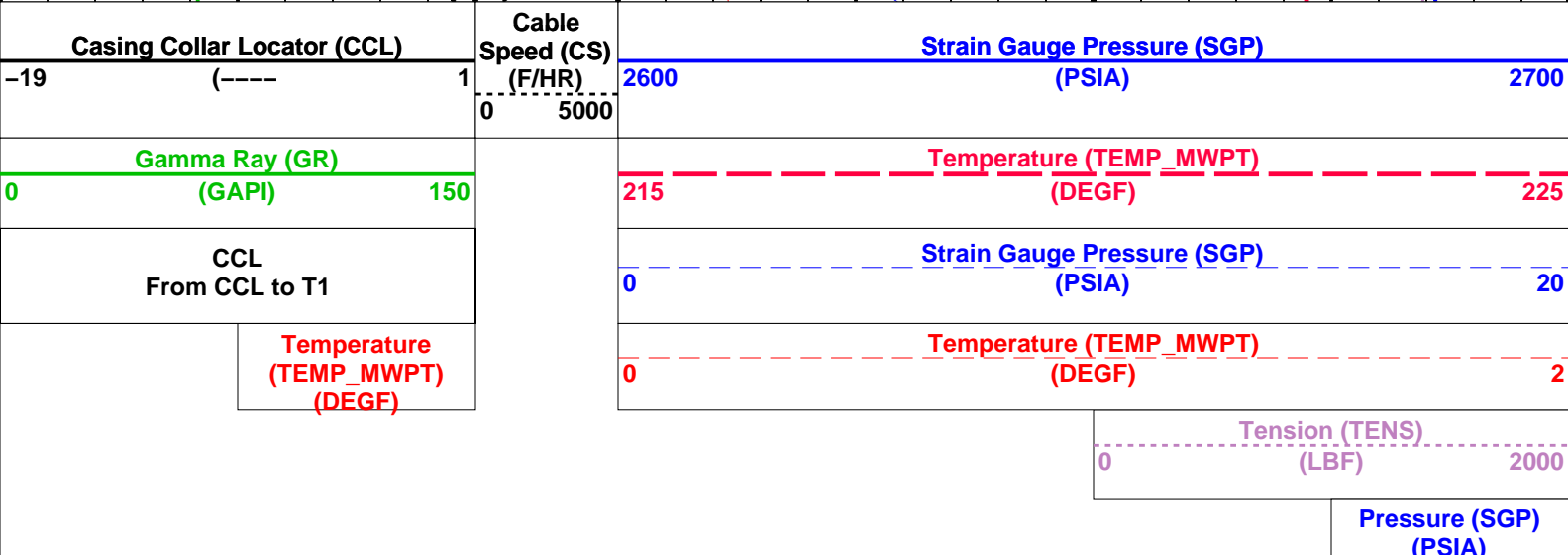
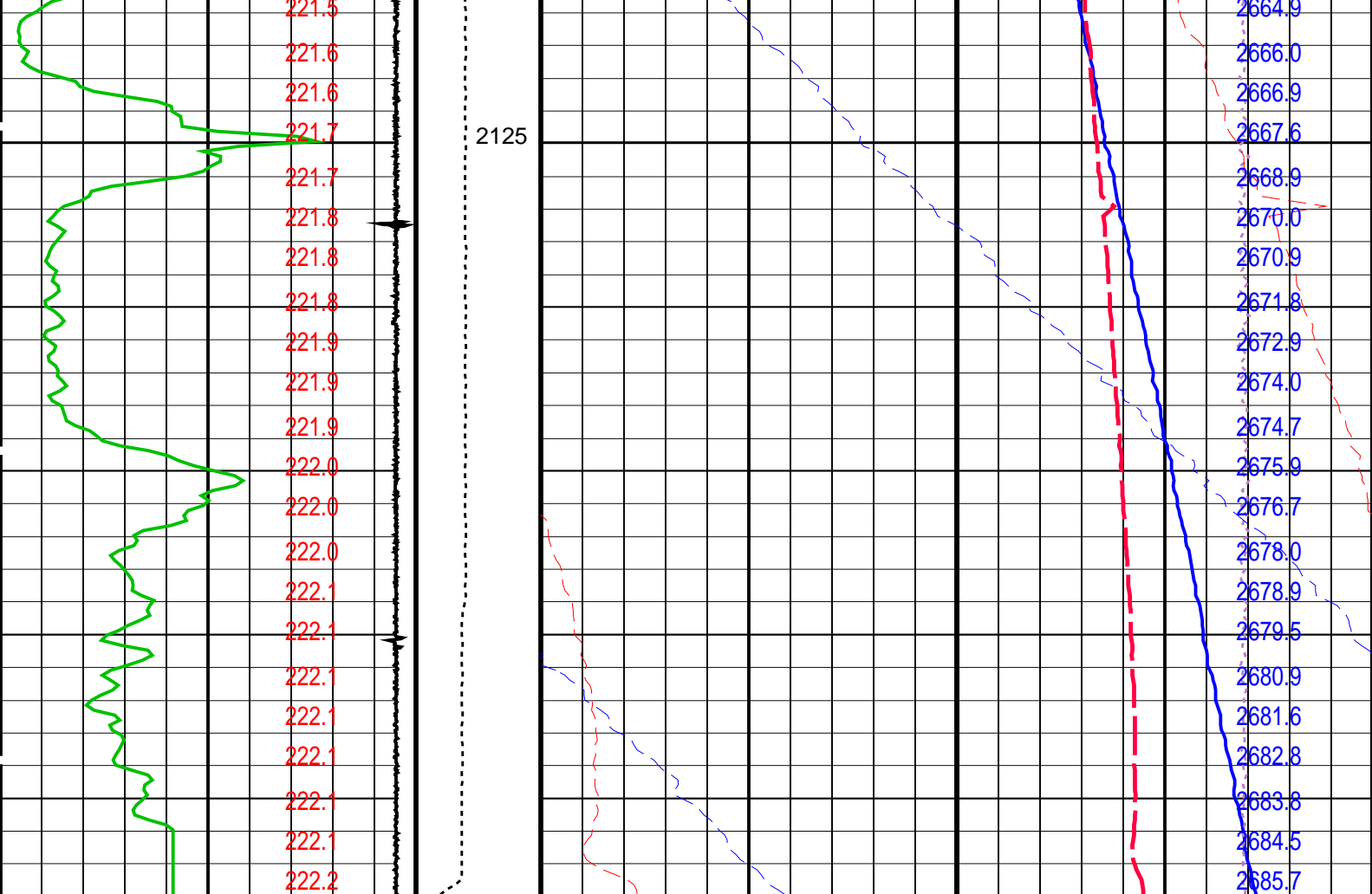
OP System Version: 17C0-154

MWP\_GUN 17C0-154 MWPT-CA 17C0-154  
MWGT-AA 17C0-154

PIP SUMMARY

Time Mark Every 60 S





PIP SUMMARY

Time Mark Every 60 S

Parameters		
DLIS Name	Description	Value
MWPT-CA: MEASUREMENT WHILE PERFORATING TOOL		
DEVI_FL_CORR	Deviation Angle for Flow Line Correction	0 DEG
FLD	Flow Line Density	1 G/C3
MWPT_NULL_SOURCE	MWPT NULL Temperature Source	TEMS
MWPT_NULL_TEMP	MWPT NULL Temperature	0.0 DEGC

Format: MWP Vertical Scale: 1:200 Graphics File Created: 04-Apr-2010 11:18

OP System Version: 17C0-154

## Output DLIS Files

DEFAULT

PERFO\_047LUP

FN:53

PRODUCER

04-Apr-2010 11:18

**Schlumberger**

## Cement Dump Pass

MAXIS Field Log

## Input DLIS Files

DEFAULT

PERFO\_038LUP

FN:44

PRODUCER

03-Apr-2010 13:43

2148.2 M

2098.5 M

## Output DLIS Files

DEFAULT

PERFO\_039PUP

FN:45

PRODUCER

03-Apr-2010 13:49

2147.3 M

2097.6 M

## OP System Version: 17C0-154

SHM\_GUN

17C0-154

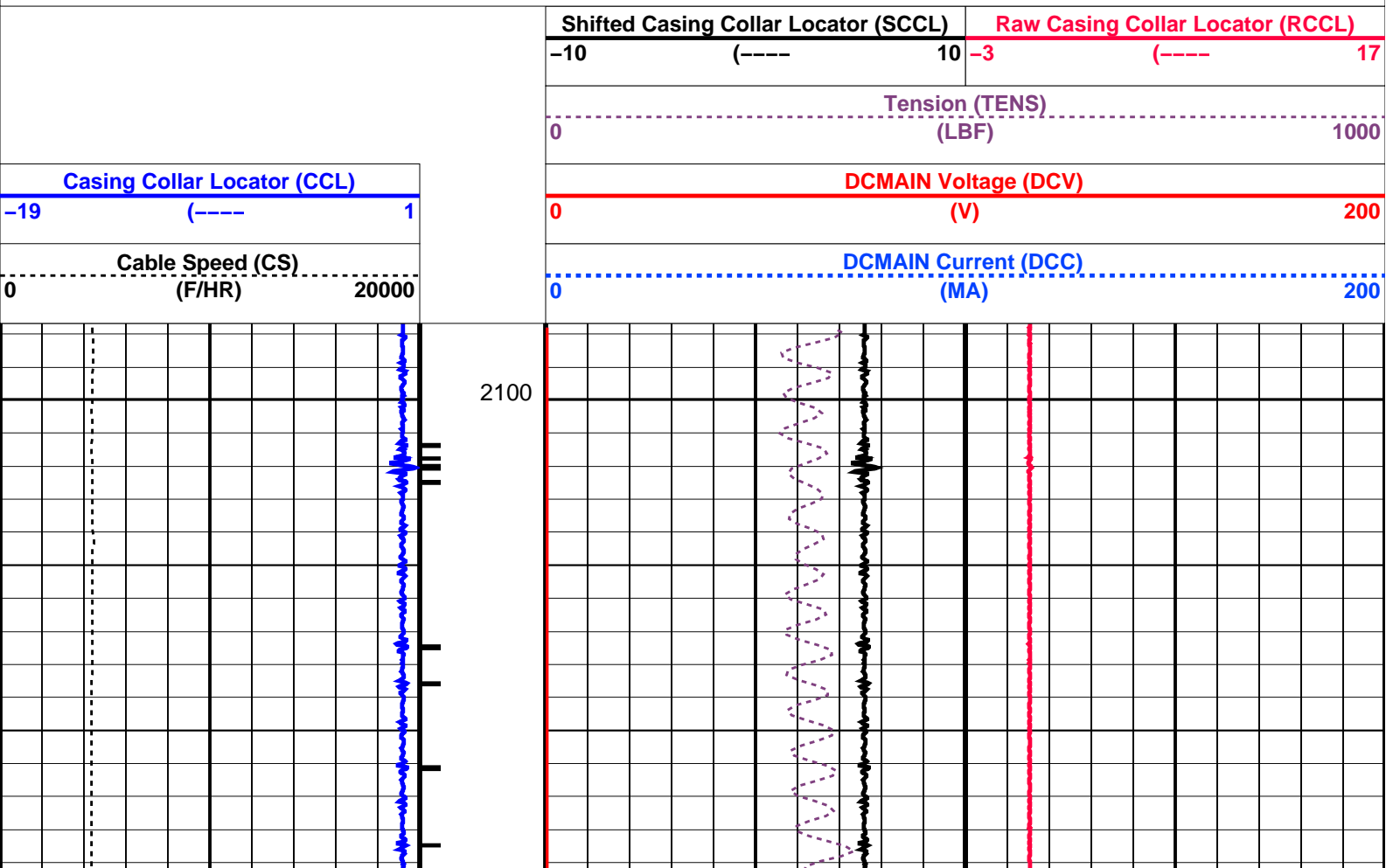
CCL-PCCL-LA

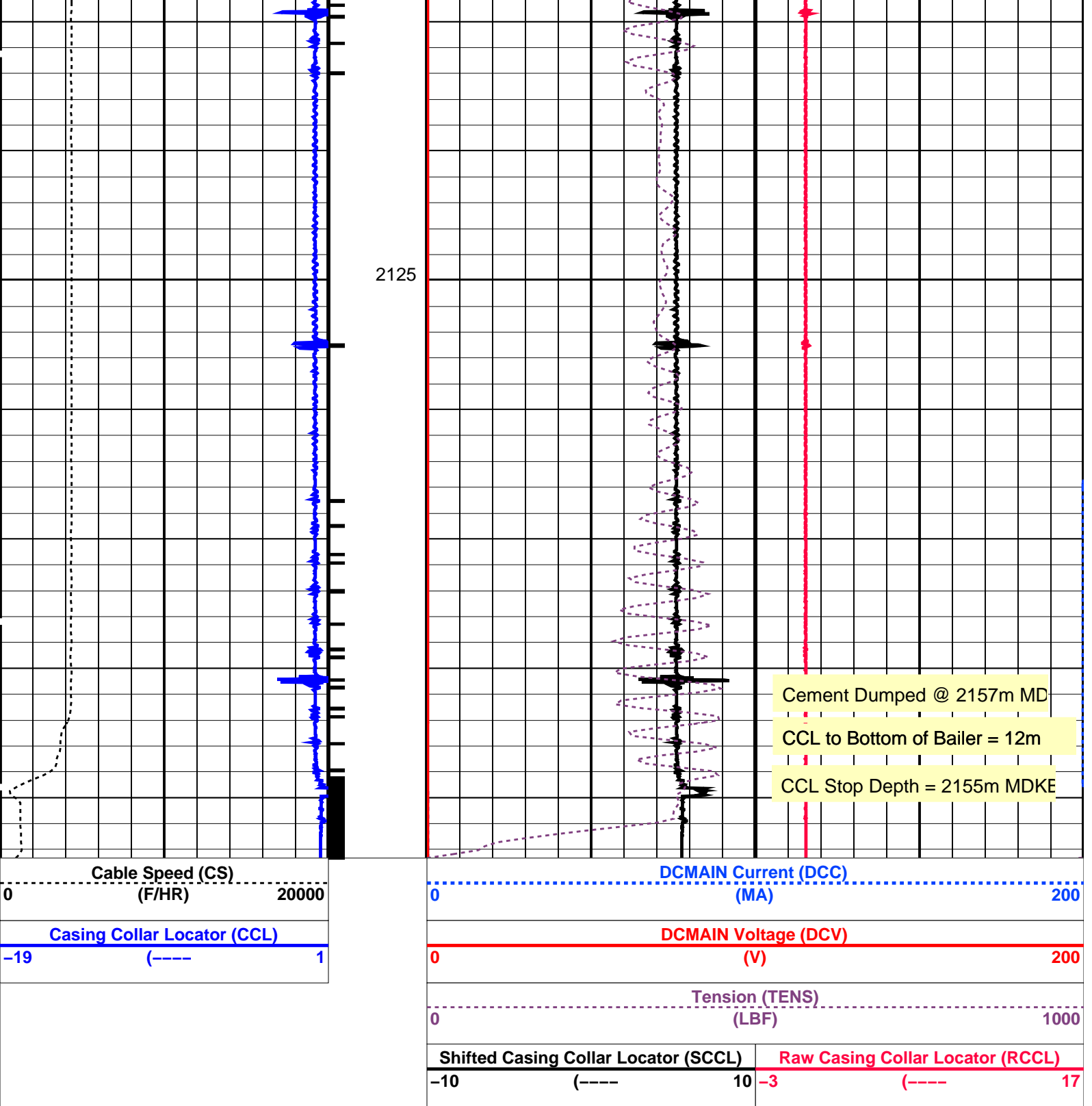
17C0-154

## PIP SUMMARY

└─ Casing Collars

Time Mark Every 60 S





#### PIP SUMMARY

Time Mark Every 60 S

### Parameters

DLIS Name	Description	Value
CCLD	CCL-PCCL-LA: Casing Collar Locator	12 IN
CCLT	CCL reset delay	0.3 V
DO	CCL Detection Level	0.3 V
PP	System and Miscellaneous	
	Depth Offset for Playback	-0.9 M
	Playback Processing	NORMAL

Format: PERFO Vertical Scale: 1:200

Graphics File Created: 03-Apr-2010 13:49

SHM_GUN	17C0-154	CCL-PCCL-LA	17C0-154
Input DLIS Files			
DEFAULT	PERFO_038LUP	FN:44	PRODUCER 03-Apr-2010 13:43 2148.2 M 2098.5 M
Output DLIS Files			
DEFAULT	PERFO_039PUP	FN:45	PRODUCER 03-Apr-2010 13:49



## Water Dump Pass

MAXIS Field Log

Input DLIS Files			
DEFAULT	PERFO_034LUP	FN:40	PRODUCER 03-Apr-2010 12:31 2150.8 M 2099.9 M
Output DLIS Files			
DEFAULT	PERFO_035PUP	FN:41	PRODUCER 03-Apr-2010 12:36 2146.9 M 2096.1 M

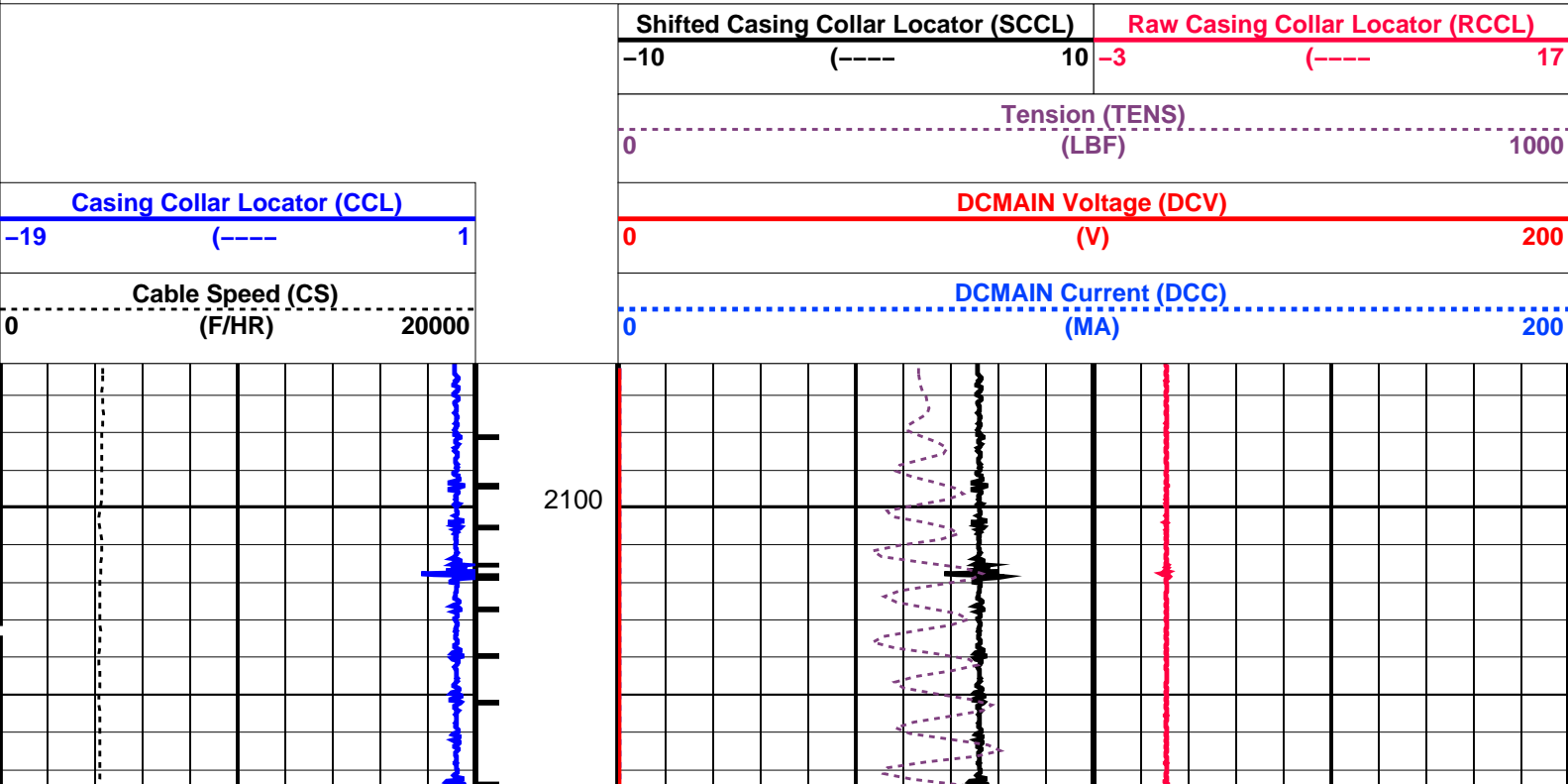
## OP System Version: 17C0-154

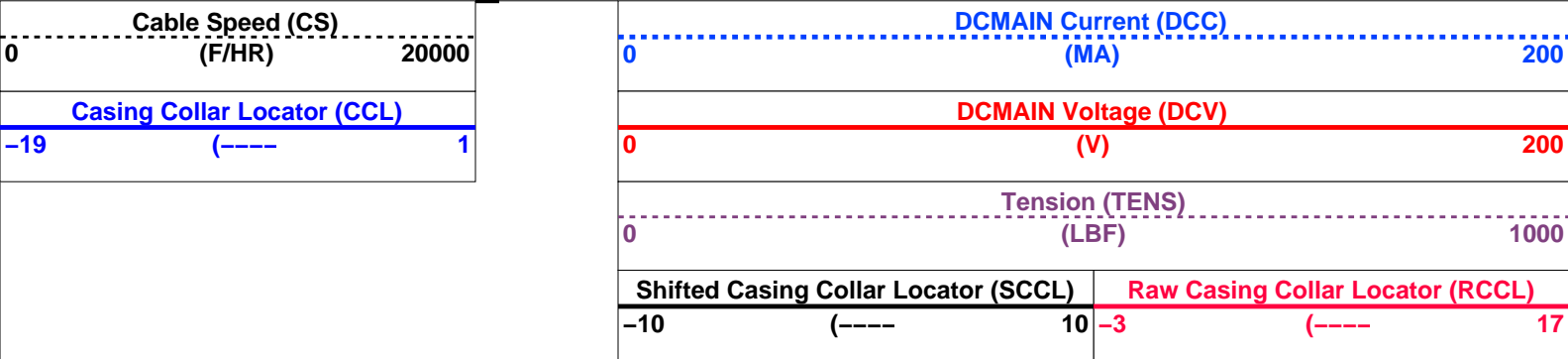
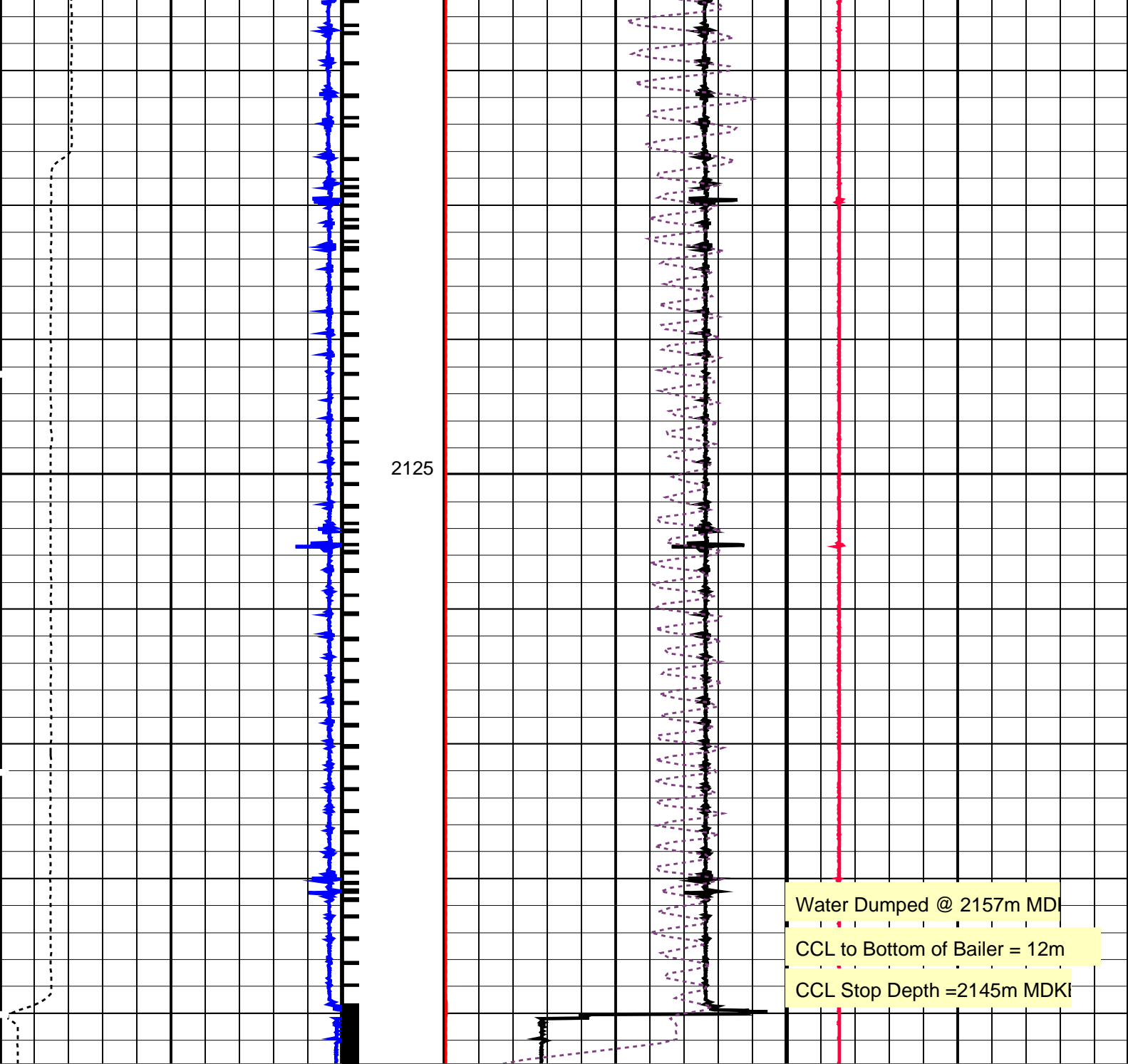
SHM_GUN	17C0-154	CCL-PCCL-LA	17C0-154
---------	----------	-------------	----------

### PIP SUMMARY

└─ Casing Collars

Time Mark Every 60 S





PIP SUMMARY

└─ Casing Collars

Time Mark Every 60 S

Parameters		
DLIS Name	Description	Value

CCLD	CCL-PCCL-LA: Casing Collar Locator	CCL reset delay	12	IN
CCLT		CCL Detection Level	0.3	V
	System and Miscellaneous			
DO		Depth Offset for Playback	-4.0	M
PP		Playback Processing	NORMAL	

Format: PERFO	Vertical Scale: 1:200	Graphics File Created: 03-Apr-2010 12:36
---------------	-----------------------	--

OP System Version: 17C0-154

SHM\_GUN17C0-154CCL-PCCL-LA17C0-154

Input DLIS Files

DEFAULT	PERFO_034LUP	FN:40	PRODUCER	03-Apr-2010 12:31	2150.8 M	2099.9 M
---------	--------------	-------	----------	-------------------	----------	----------

Output DLIS Files

DEFAULT	PERFO_035PUP	FN:41	PRODUCER	03-Apr-2010 12:36		
---------	--------------	-------	----------	-------------------	--	--

Schlumberger

Log Away From Plug Setting

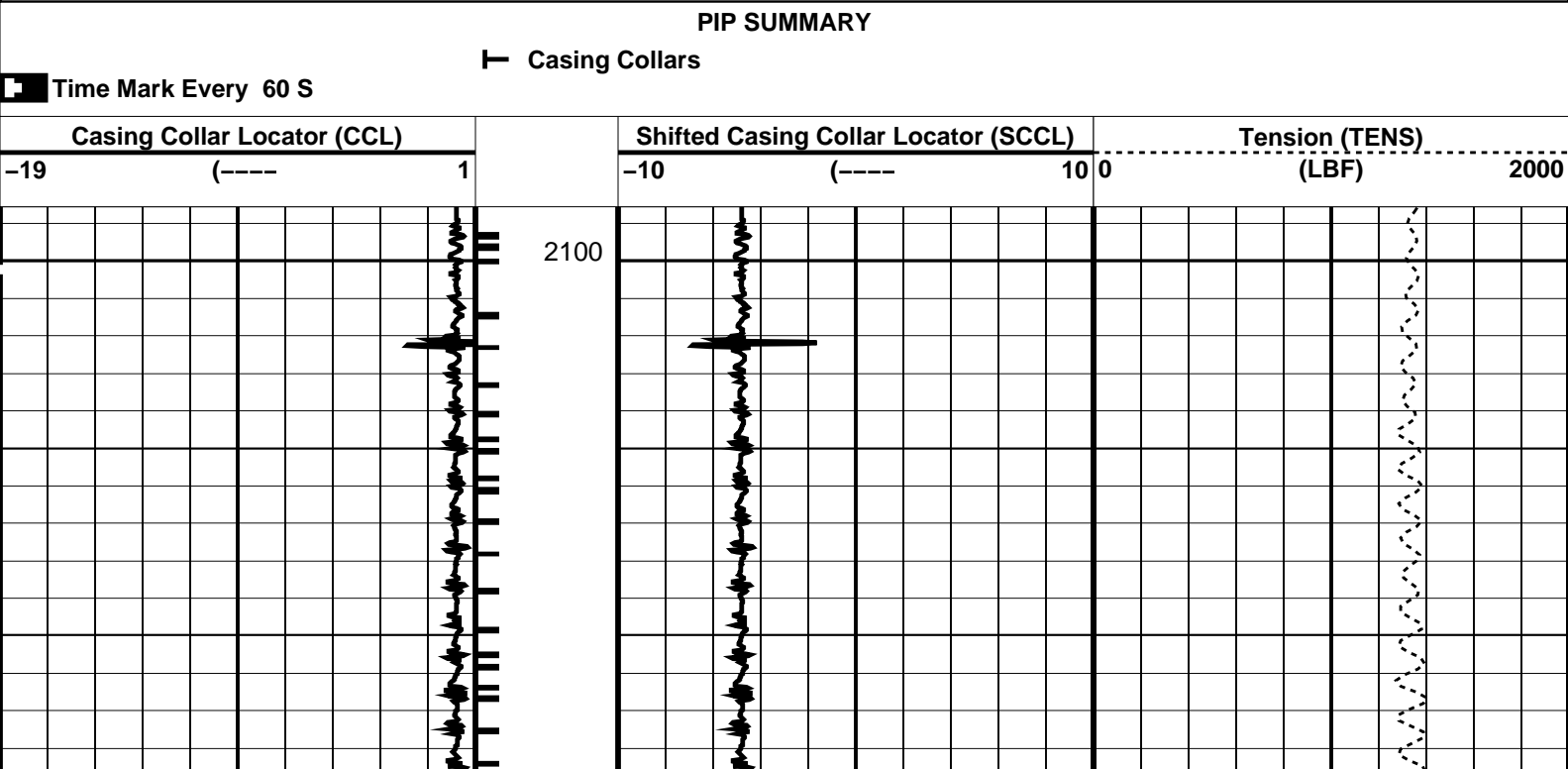
MAXIS Field Log

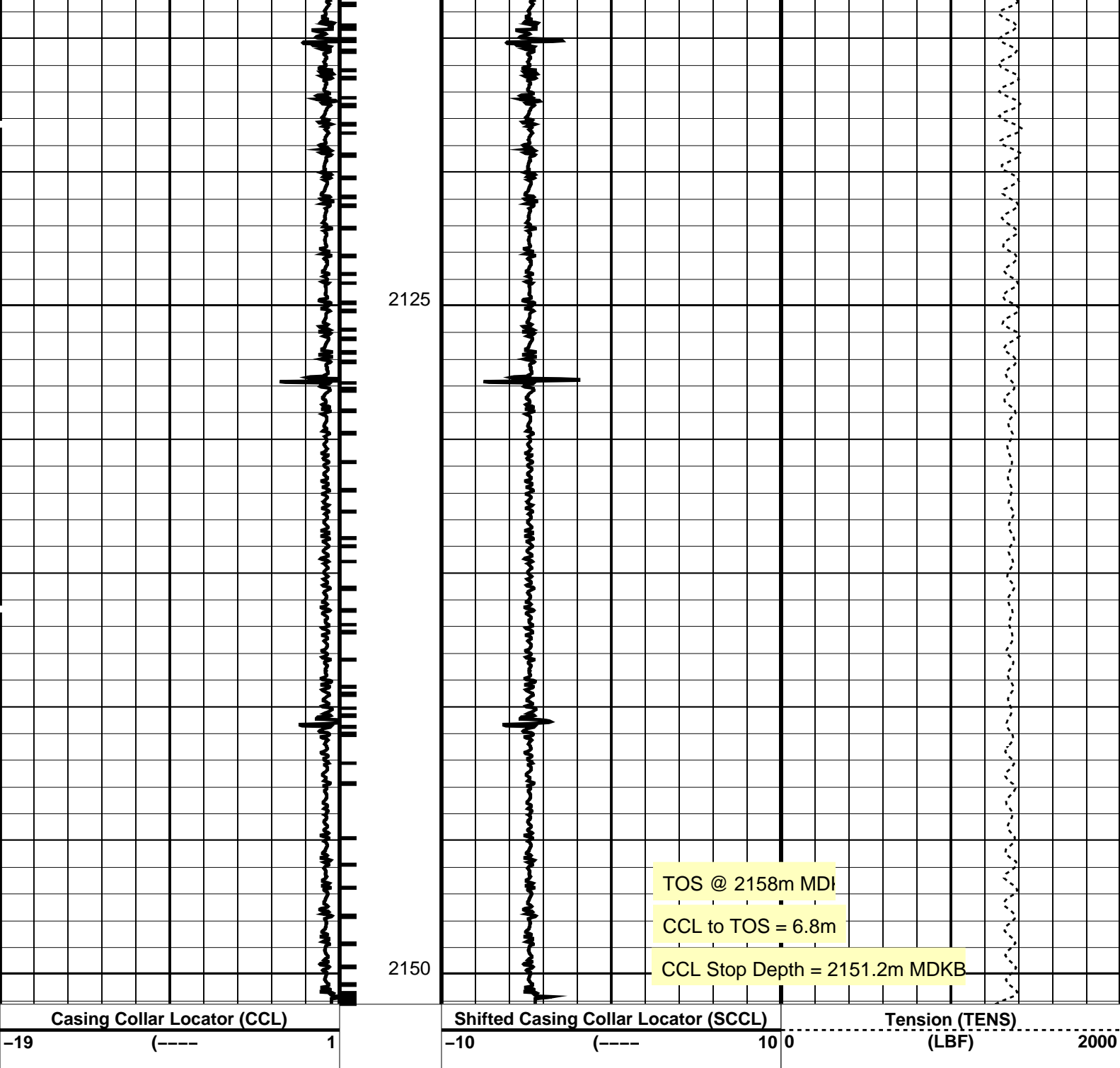
Output DLIS Files

DEFAULT	MPBT_030LUP	FN:36	PRODUCER	03-Apr-2010 10:51	2151.1 M	2098.5 M
---------	-------------	-------	----------	-------------------	----------	----------

OP System Version: 17C0-154

MPEX-7"26lb/ftMPSU-BA17C0-154CCL-PCCL-LA17C0-154





PIP SUMMARY

Time Mark Every 60 S

Casing Collars

Parameters		
DLIS Name	Description	Value
CCLD	CCL-PCCL-LA: Casing Collar Locator	
CCLT	CCL reset delay	12 IN
	CCL Detection Level	0.3 V

Format: PERFO    Vertical Scale: 1:200

Graphics File Created: 03-Apr-2010 10:51

OP System Version: 17C0-154

MPEX-7"    26lb/ft

CCL-PCCL-LA    17C0-154

MPSU-BA

17C0-154

Output DLIS Files

**Schlumberger****7" Posiset Plug Setting Record  
TOS @ 2158m MDKB**

MAXIS Field Log

**Output DLIS Files**

DEFAULT

MPBT\_029LUP

FN:35

PRODUCER

03-Apr-2010 10:25

**OP System Version: 17C0-154**MPEX-7"  
CCL-PCCL-LA26lb/ft  
17C0-154

MPSU-BA

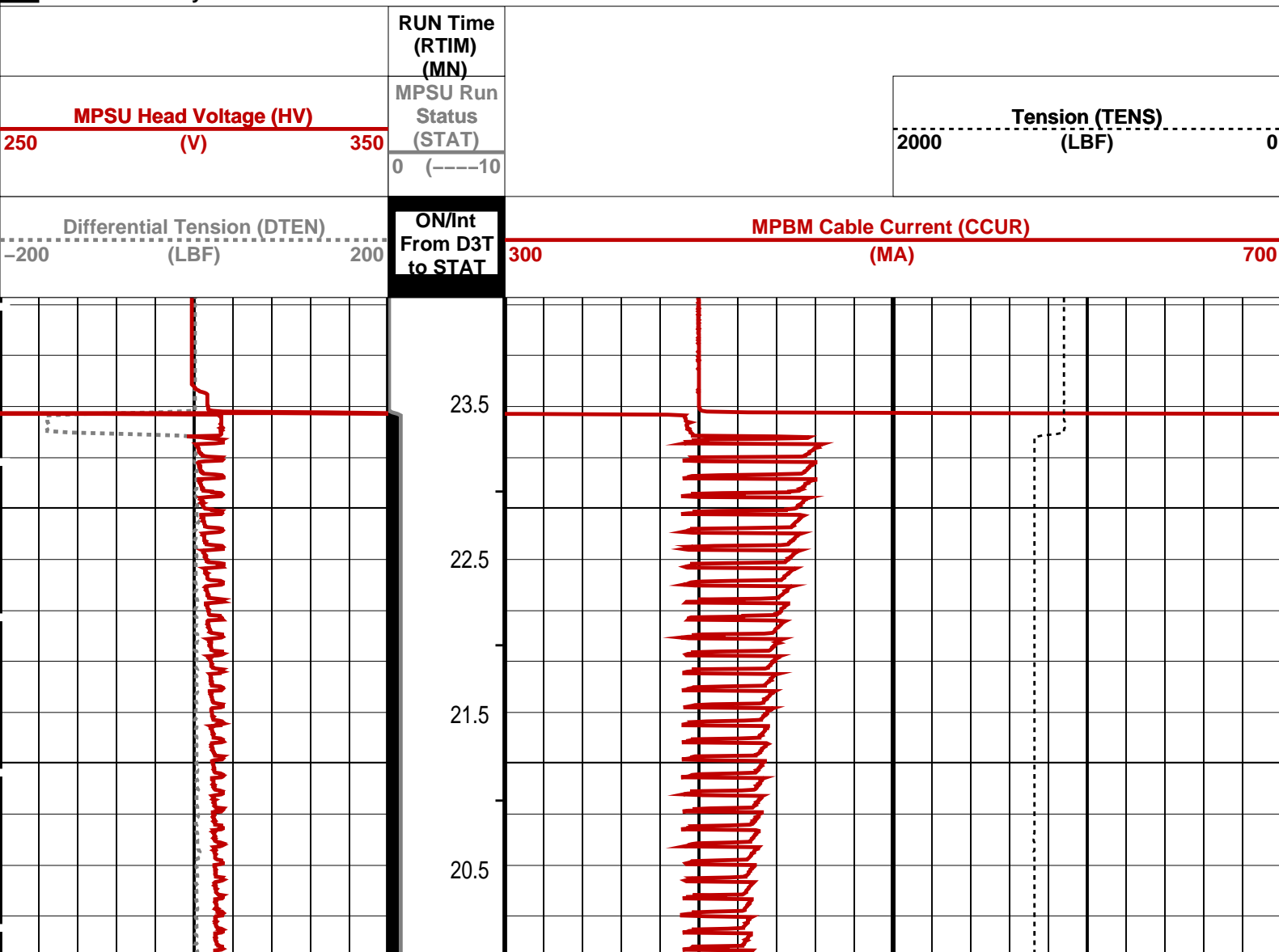
17C0-154

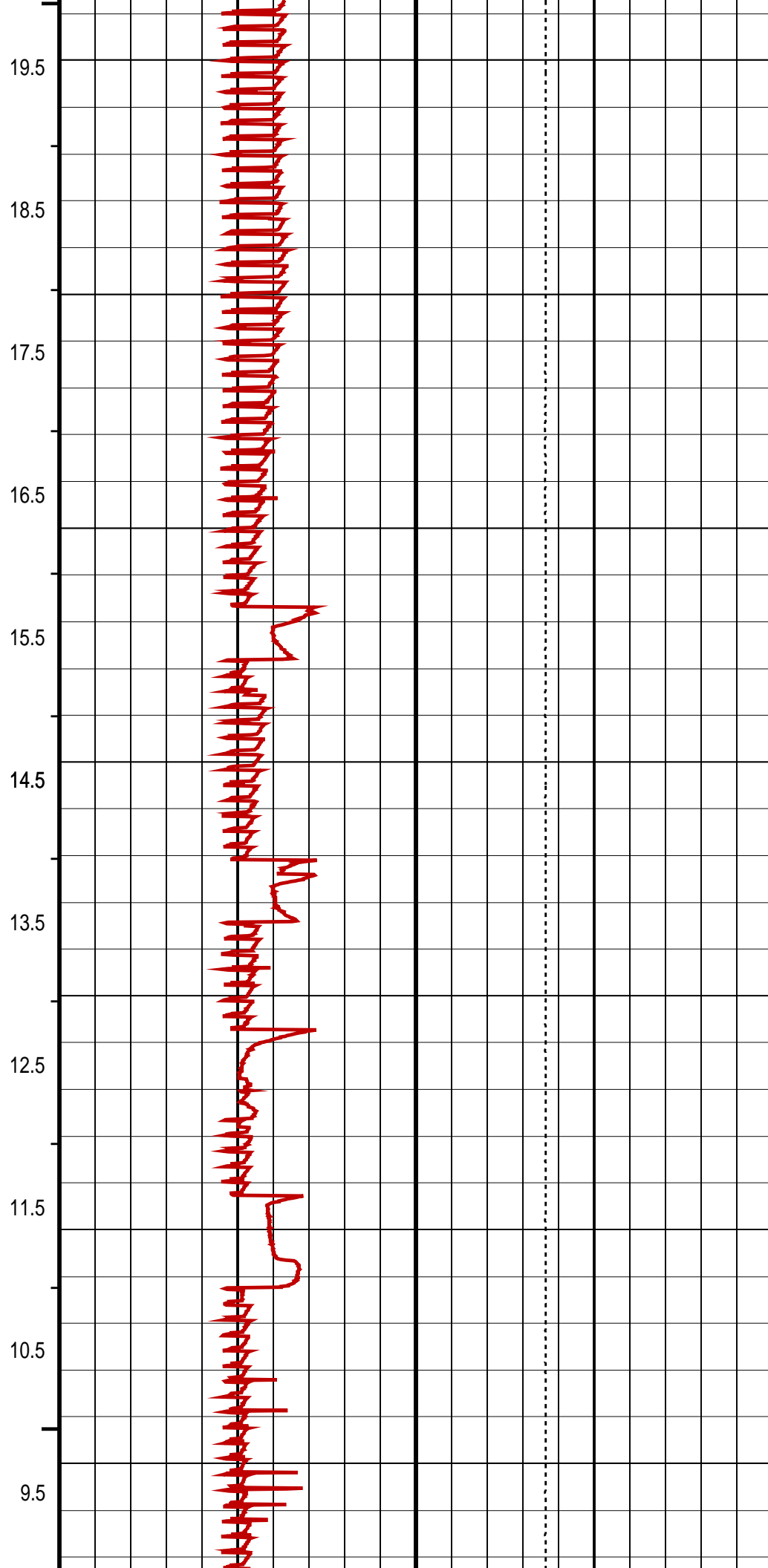
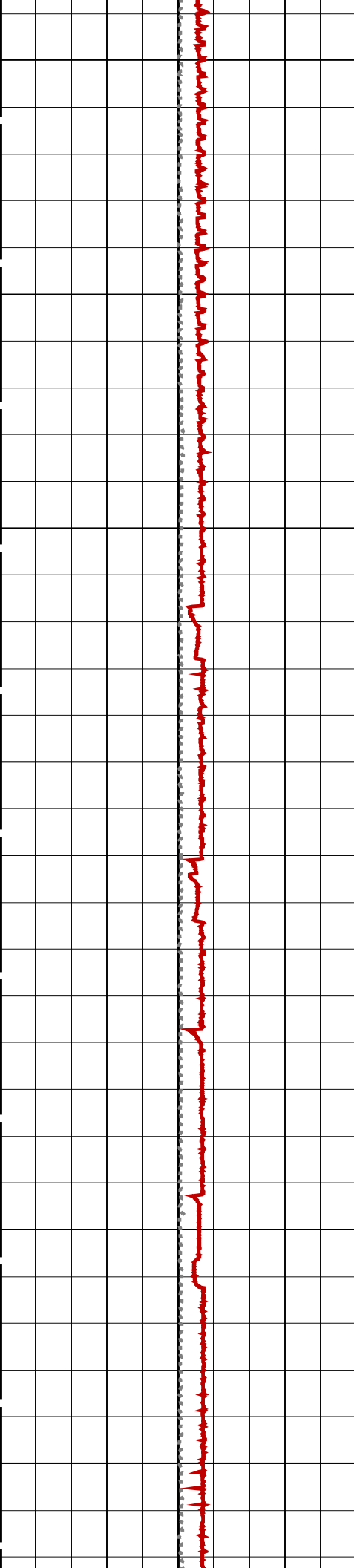
**PIP SUMMARY**

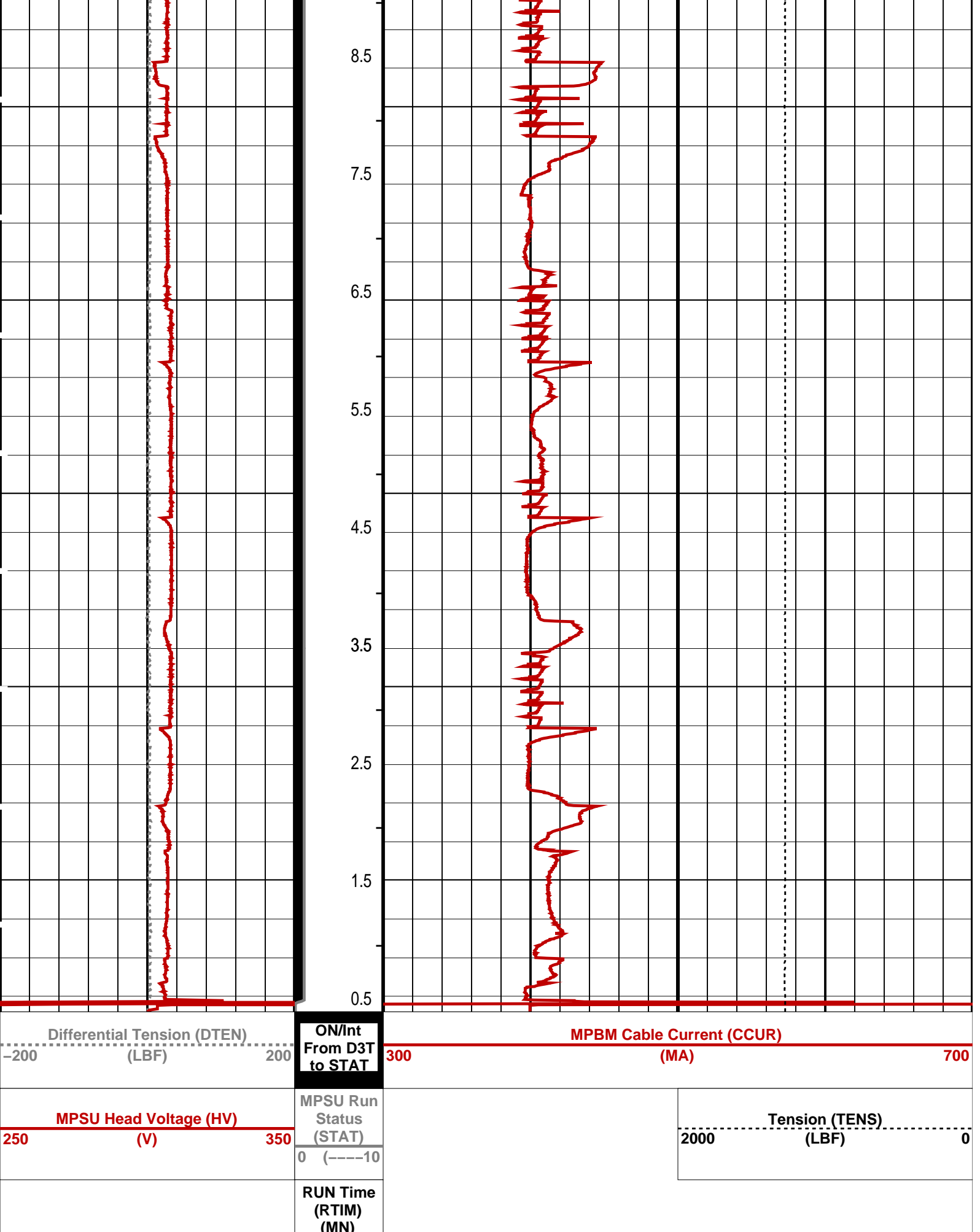
└ MPSU Run Time Every 1 MN

└ MPSU Run Time Every 10 MN

Time Mark Every 60 S







## Parameters

DLIS Name

Description

Value

MPSU-BA: MECHANICAL PLUGBACK SETTING UNIT  
IPUMP Intensifier Pump

TRUE

Format: MPBT Vertical Scale: 1:600

Graphics File Created: 03-Apr-2010 10:25

OP System Version: 17C0-154

MPEX-7" 26lb/ft  
CCL-PCCL-LA 17C0-154

MPSU-BA 17C0-154

## Output DLIS Files

DEFAULT MPBT\_029LUP

FN:35 PRODUCER 03-Apr-2010 10:25

Schlumberger

Plug Correlation Pass

MAXIS Field Log

## Output DLIS Files

DEFAULT MPBT\_026LUP

FN:32 PRODUCER 03-Apr-2010 10:06

OP System Version: 17C0-154

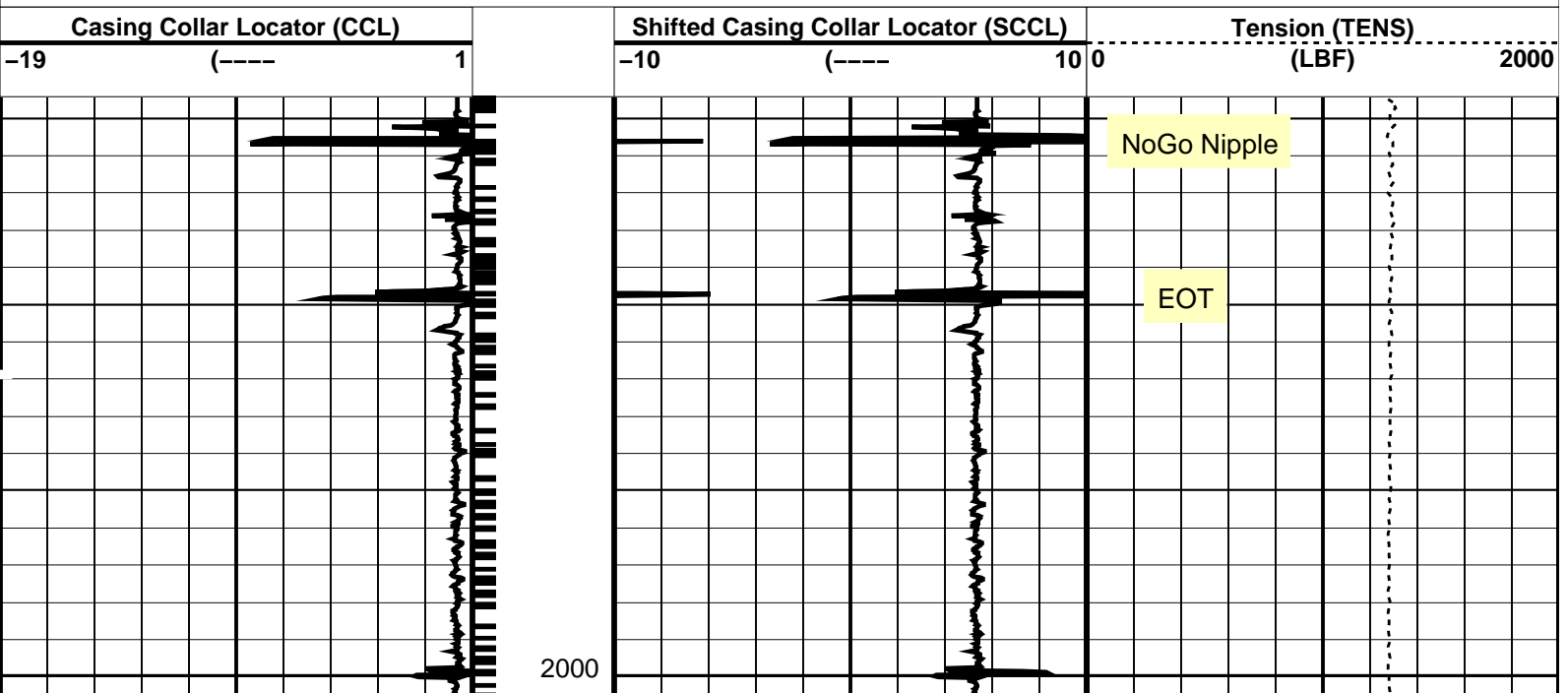
MPEX-7" 26lb/ft  
CCL-PCCL-LA 17C0-154

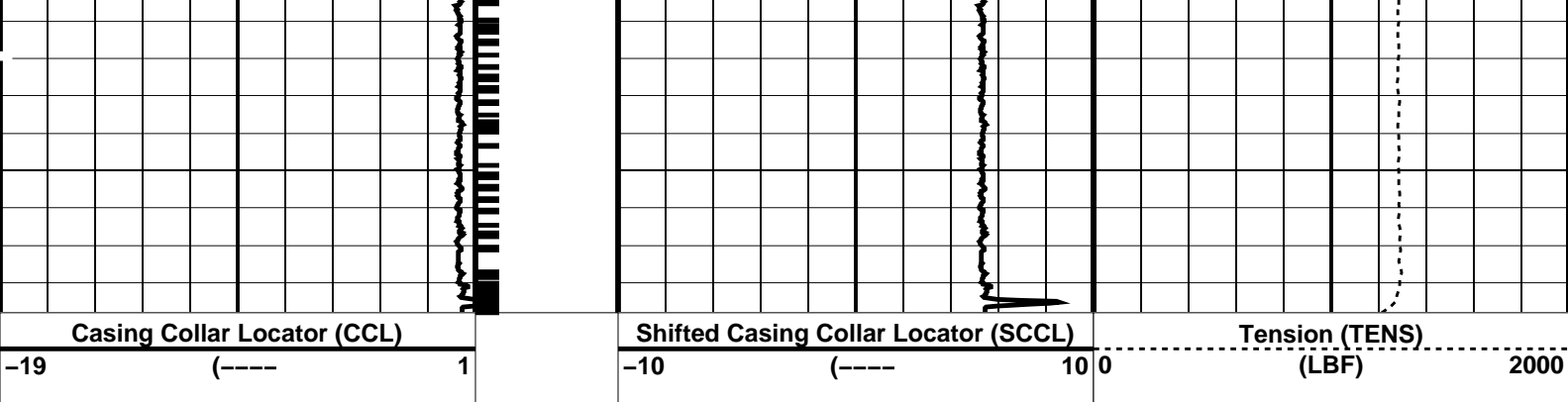
MPSU-BA 17C0-154

## PIP SUMMARY

└ Casing Collars

Time Mark Every 60 S





PIP SUMMARY

Time Mark Every 60 S

Casing Collars

Parameters		
DLIS Name	Description	Value
CCLD	CCL-PCCL-LA: Casing Collar Locator	12 IN
CCLT	CCL reset delay	0.3 V
	CCL Detection Level	

Format: PERFO Vertical Scale: 1:200 Graphics File Created: 03-Apr-2010 10:06


OP System Version: 17C0-154

MPEX-7" 26lb/ft MPSU-BA 17C0-154

CCL-PCCL-LA 17C0-154

Output DLIS Files

DEFAULT MPBT\_026LUP FN:32 PRODUCER 03-Apr-2010 10:06



2.13" Dummy Plug

MAXIS Field Log

Company: Esso Australia Pty Ltd. Well: BREAM B 16

Input DLIS Files					
DEFAULT	PSP_017LUP	FN:20	PRODUCER	02-Apr-2010 14:38	2202.0 M 1945.8 M
Output DLIS Files					
DEFAULT	PSP_018PUP	FN:22	PRODUCER	02-Apr-2010 14:49	2194.0 M 1943.3 M
CLIENT_DATA	PSP_018PUC	FN:23	CUSTOMER	02-Apr-2010 14:49	2194.0 M 1943.3 M

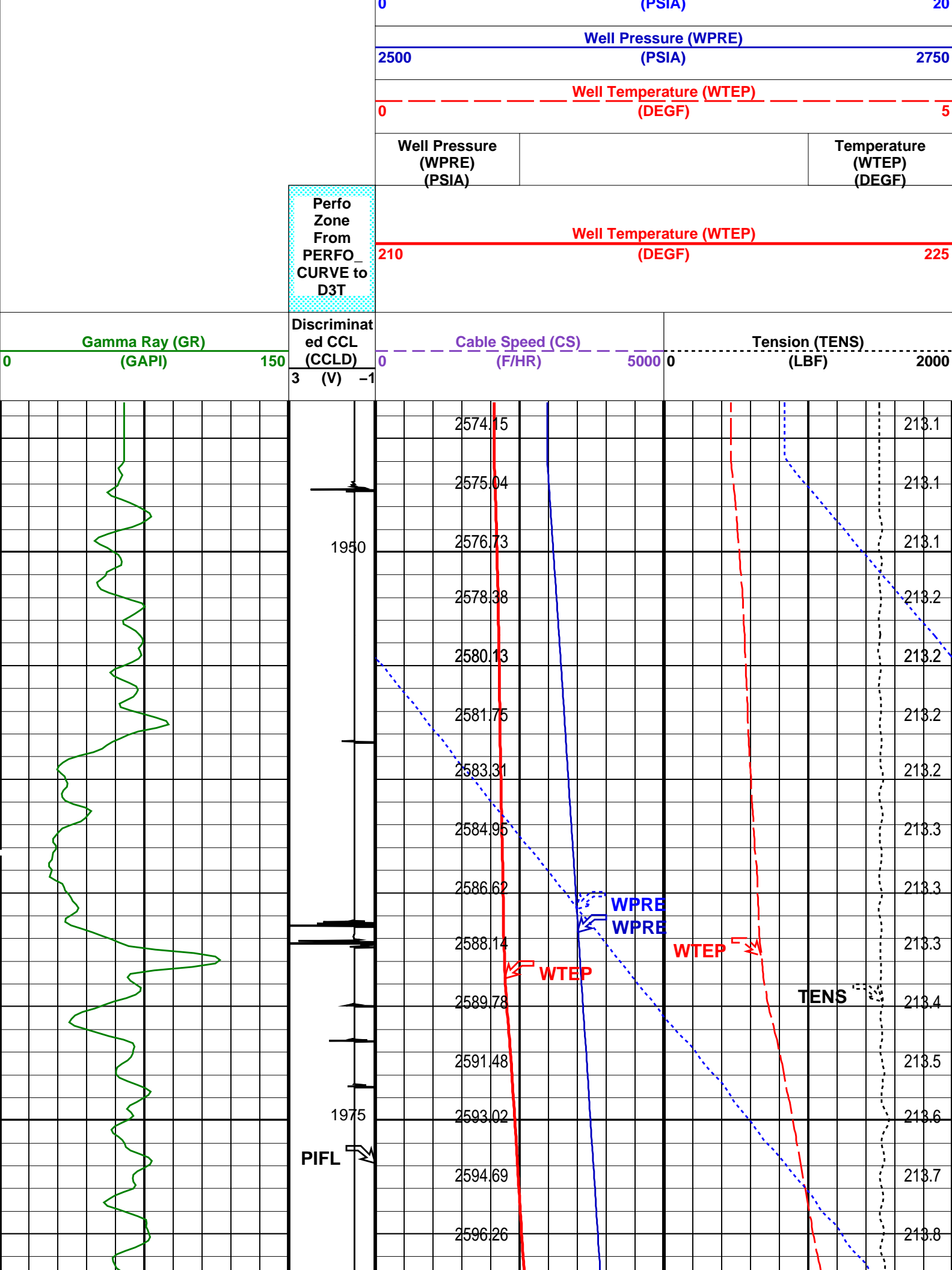
OP System Version: 17C0-154

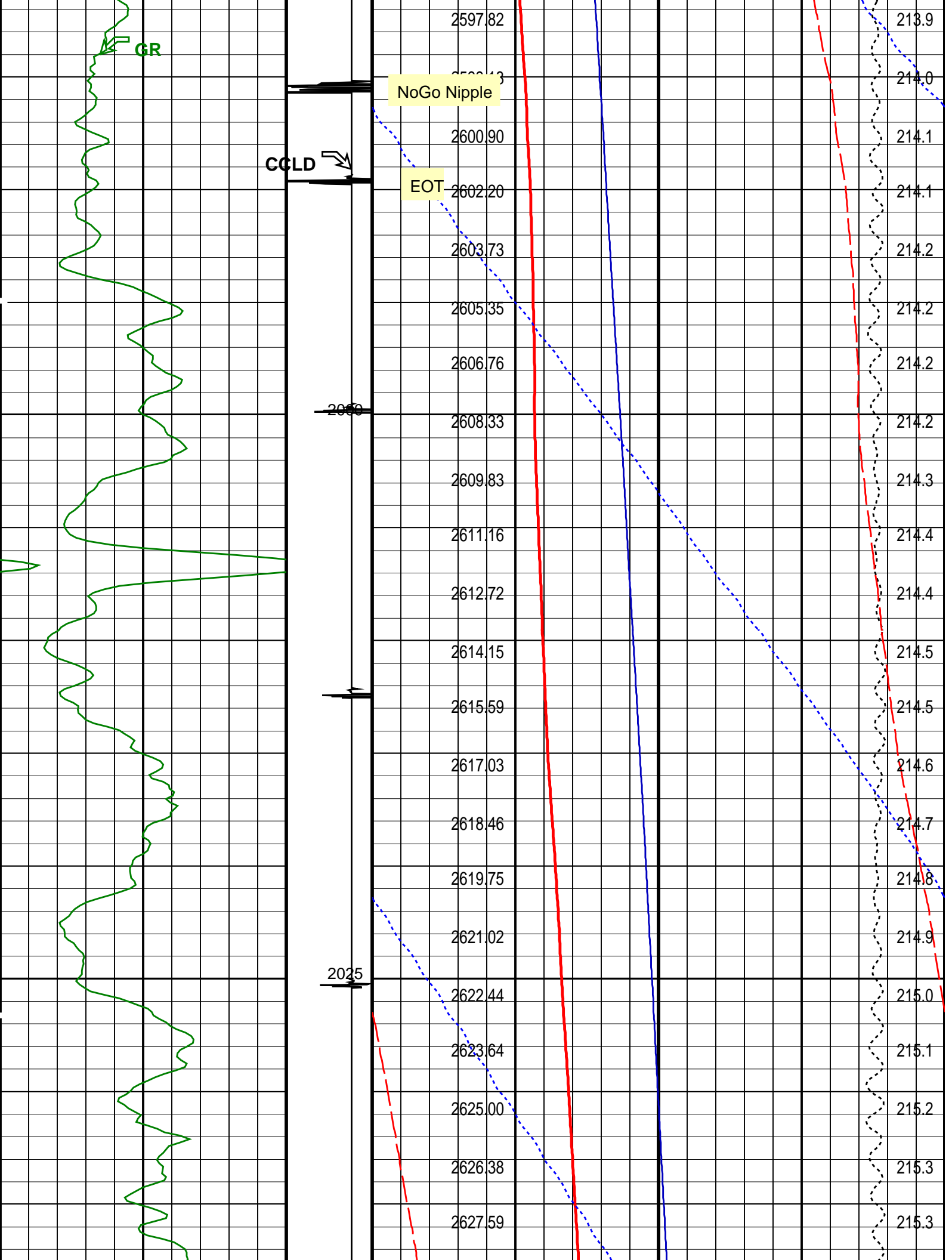
PSPT SRPC-3870\_Q3\_2009\_OP17\_V3

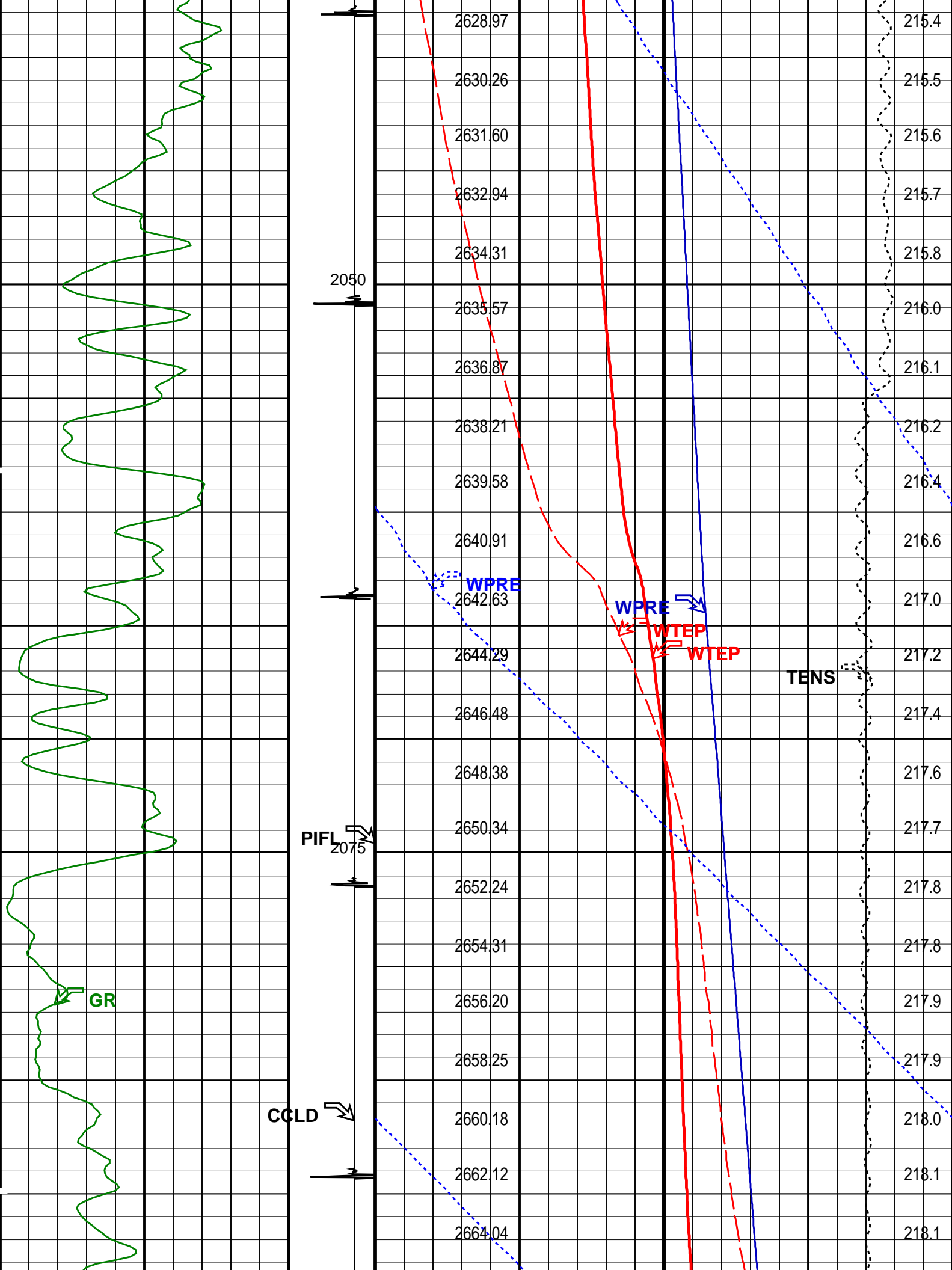
PIP SUMMARY

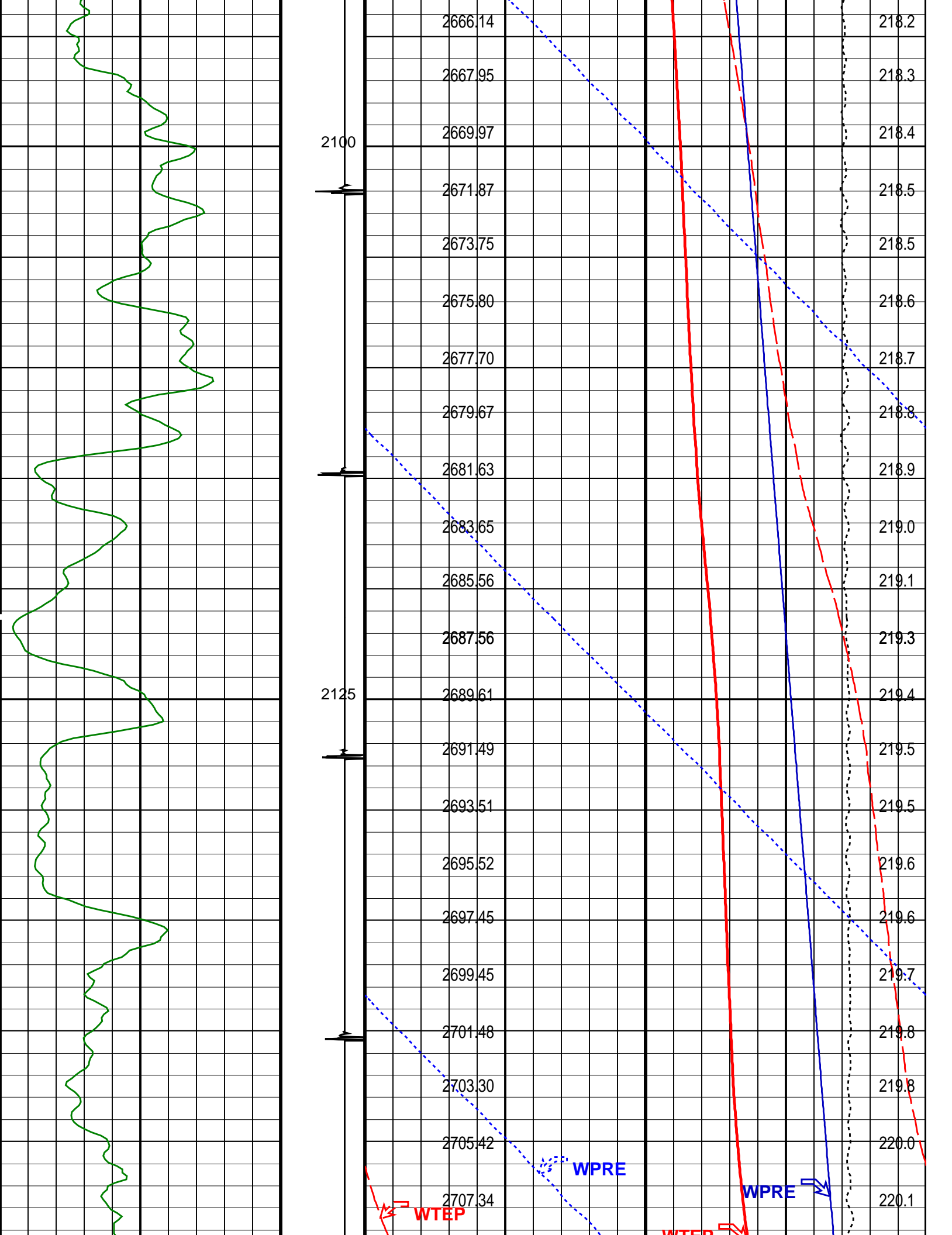
Time Mark Every 60 S

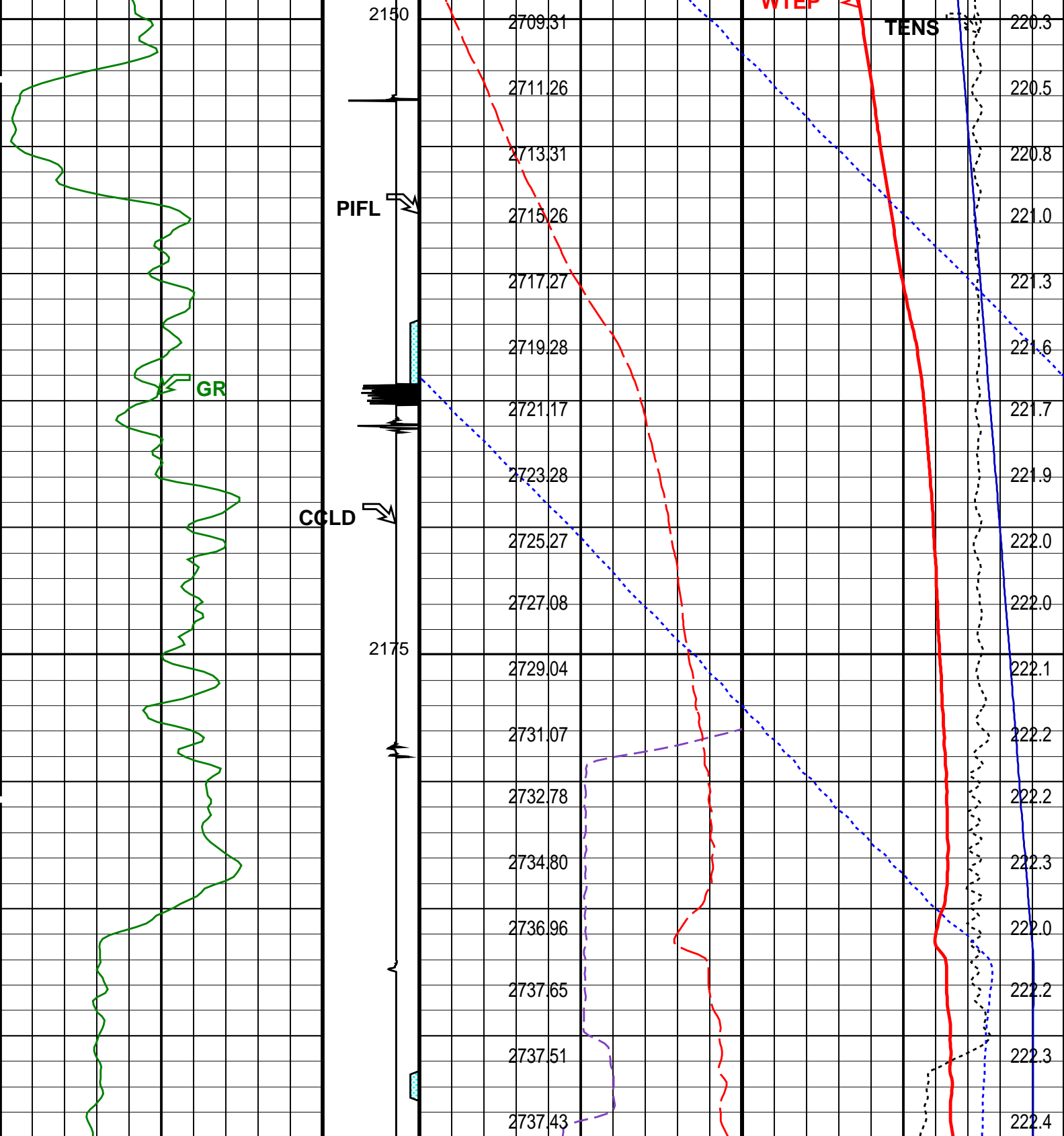












Gamma Ray (GR) (GAPI)	Discriminat ed CCL (CCLD)	Cable Speed (CS) (F/HR)	Tension (TENS) (LBF)
0 150	3 (V) -1	0 5000	0 2000

Perfo Zone From PERFO_ CURVE to D3T	Well Temperature (WTEP) (DEGF)	
	210	225

Well Pressure (WPRE)	Temperature (WTEP)
-------------------------	-----------------------

	(PSIA)		(DEGF)
	Well Temperature (WTEP)		
0	(DEGF)		5
	Well Pressure (WPRE)		
2500	(PSIA)		2750
	Amplified Well Pressure (WPRE)		
0	(PSIA)		20

PIP SUMMARY			
Time Mark Every 60 S			

Format: PSP_1	Vertical Scale: 1:200	Graphics File Created: 02-Apr-2010 14:49	
---------------	-----------------------	--	--

OP System Version: 17C0-154			
PSPT	SRPC-3870_Q3_2009_OP17_V3		

Parameters			
DLIS Name	Description	Value	
DO PP	System and Miscellaneous		
	Depth Offset for Playback	0.0	M
	Playback Processing	NORMAL	

Input DLIS Files						
DEFAULT	PSP_017LUP	FN:20	PRODUCER	02-Apr-2010 14:38	2202.0 M	1945.8 M
Output DLIS Files						
DEFAULT	PSP_018PUP	FN:22	PRODUCER	02-Apr-2010 14:49		
CLIENT_DATA	PSP_018PUC	FN:23	CUSTOMER	02-Apr-2010 14:49		

Company:	Esso Australia Pty Ltd.	Schlumberger
Well:	BREAM B 16	
Field:	BREAM B	
Rig:	Crane / Prod # 4	
Country:	Australia	
2-1/8" Phased Powerjet MWPT Perforation Record		
7" Posiset Plug Setting Record		