



PRECISION

COMPENSATED SONIC

1:500 MD

Compact

COMPANY ESSO AUSTRALIA PTY LTD

WELL BREAM A9B

FIELD BREAM

PROVINCE/COUNTY BASS STRAIT

COUNTRY/STATE AUSTRALIA

LOCATION 38DEG 29' 58.800"S 147DEG 46' 20.685"E

5738460.920 N 567353.500 E

FIELD PRINT

LSD SEC TWP RGE

Other Services
DUAL LATEROLOG
PHOTO DENSITY

API Number
Permit Number
Permanent Datum MSL , Elevation 0.0 metres
Log Measured From RT @ 32.82 M above Permanent Datum
Drilling Measured From RT

COMPENSATED NEUTRON

Elevations:

KB 32.82 metres
DF 32.82 metres
GL -59.40 metres

Date 05-MAR-2006

Run Number ONE

Depth Driller 2283.00 metres

Depth Logger 2280.00 metres

First Reading 2273.00 metres

Last Reading 1756.00 metres

Casing Driller 1756.00 metres

Casing Logger 1756.00 metres

Bit Size 8.50 inches

Hole Fluid Type KCL/GYL/POLY

Density / Viscosity 10.00 lb/USg 75.00 CP

PH / Fluid Loss 8.90 2.80

Sample Source FLOWLINE

Rm @ Measured Temp 0.095 @ 25.0 ohm-m

Rmf @ Measured Temp 0.072 @ 25.0 ohm-m

Rmc @ Measured Temp 0.099 @ 25.0 ohm-m

Source Rmf / Rmc PRESS PRESS

Rm @ BHT 0.043 @ 82.4 ohm-m

Time Since Circulation 0.5 HRS

Max Recorded Temp 82.40 deg C

Equipment Name 5" CWS/CML

Equipment / Base 1 SALE

Recorded By R. TENCH, B. MOSS

Witnessed By TREVOR LOBO

CIRC STOPPED 22:00 4/03

BOREHOLE RECORD

Bit Size inches	Depth From metres	Depth To metres
8.500	1756.00	2283.00

CASING RECORD

Type	Size inches	Depth From metres	Shoe Depth metres	Weight pounds/ft
K-55	13.375	0.00	797.00	54.50
K-55	9.625	797.00	1756.00	47.00

REMARKS

RIG: NABORS 453

5" SHUTTLE/MEMORY COMPACT OPERATION.

CREW: R TENCH , B MOSS , B GOODWIN, M KOLCZE.

FIELD FINAL LOGS TO BE CORRELATED TO ANADRILL GAMMA LOG.

MAX. TEMPERATURE: 82.4 DEG C AT 2226.5 m MD

MAX. INCLINATION: 47.9 DEG AT 1750 m MD

MAX. DOGLEG SERVERITY: 6.15 DEG/30m AT 1802.19 m MD

DEPLOYMENT ANGLE: 33.7 DEG

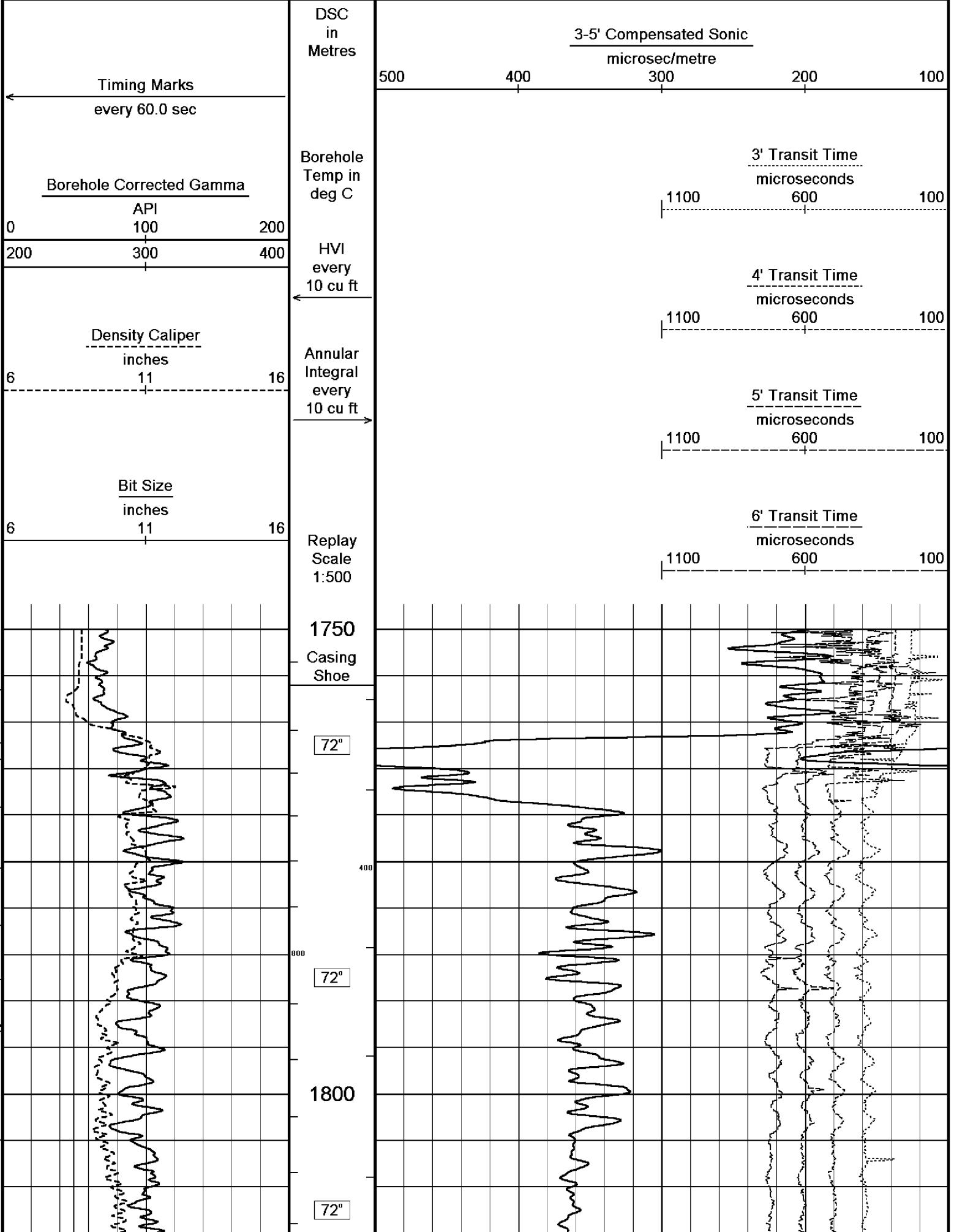
HVOL: 850 FT^3

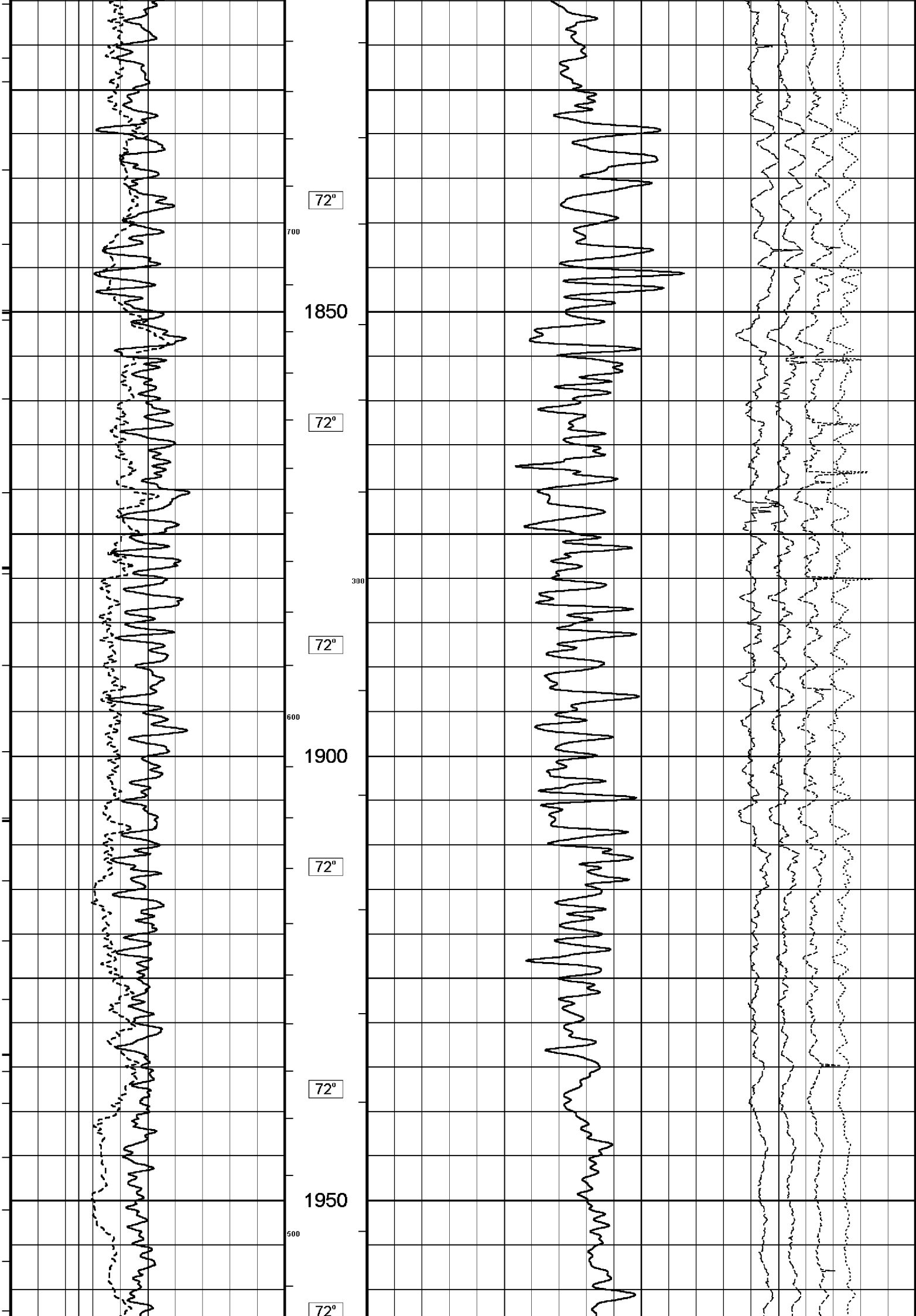
AVOL: 415 FT^3

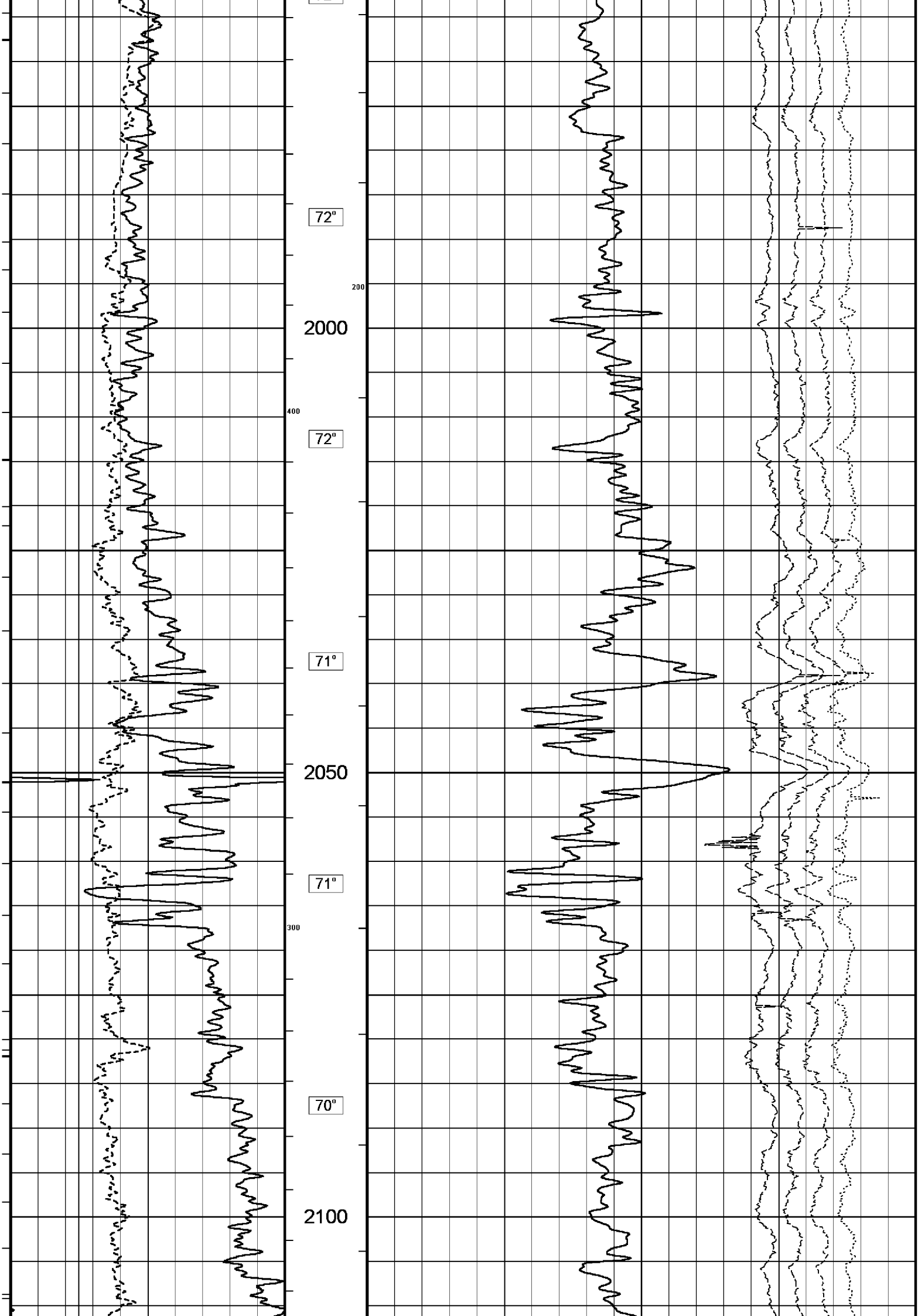
LOGGING SPEED 6M/MIN FROM TD TO 1937.52

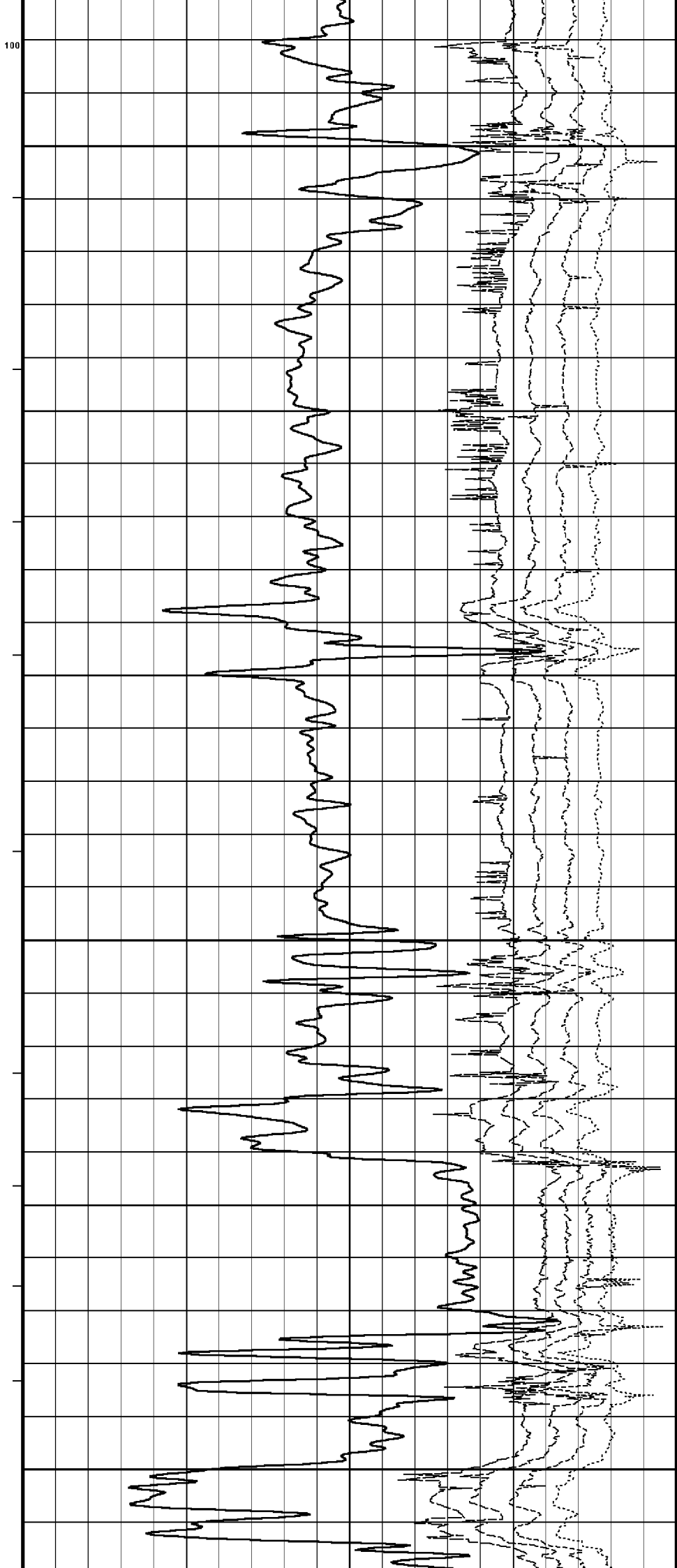
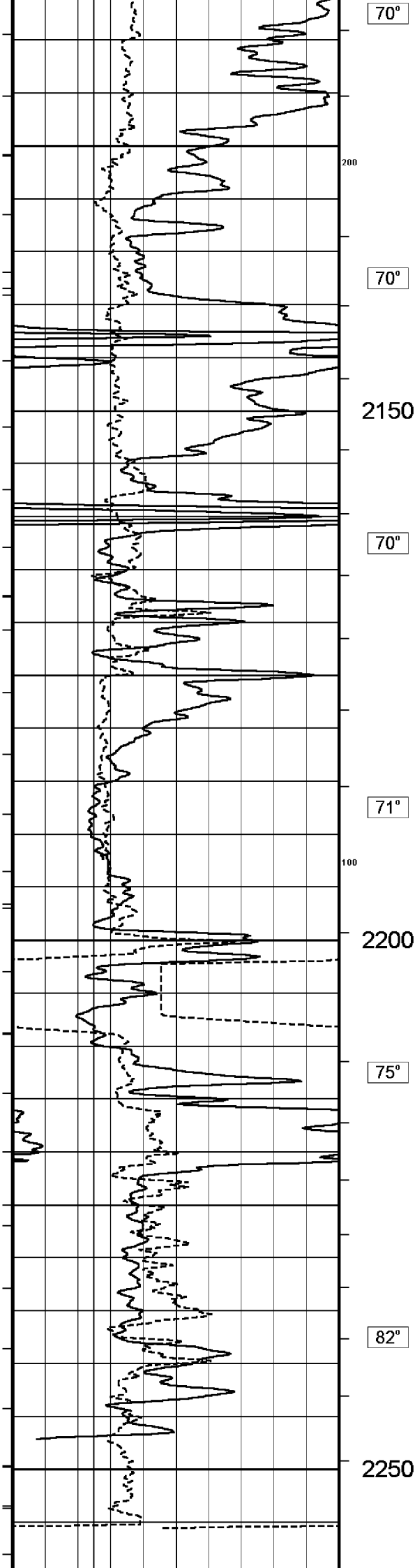
LOGGING SPEED 12M/MIN FROM 1937.52 TO 1735.6

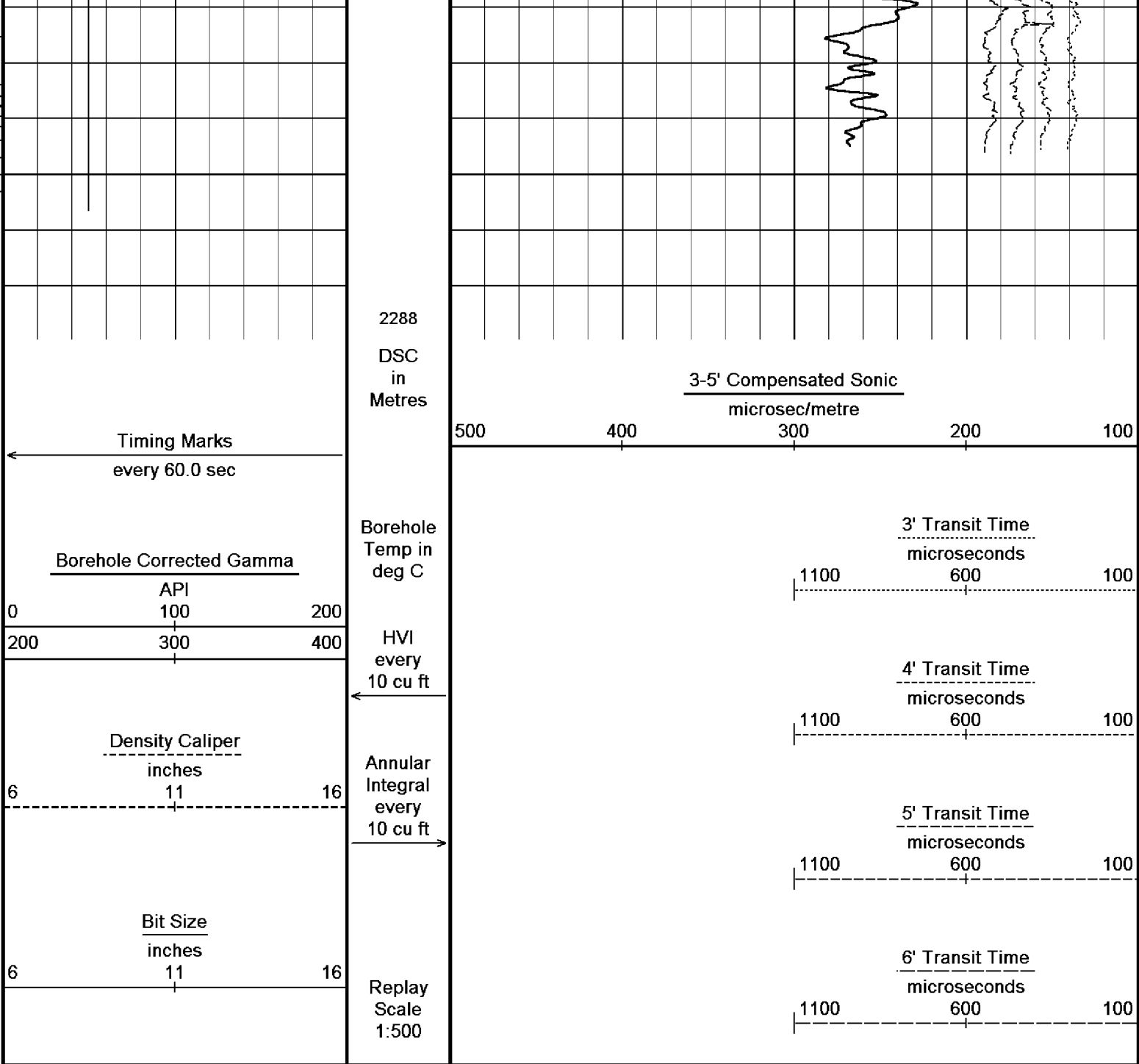
All interpretations are opinions based on inferences from electrical or other measurements and we cannot, and do not, guarantee the accuracy or correctness of any interpretations, and we shall not, except in the case of gross or wilful negligence on our part, be liable or responsible for any loss, costs, damages or expenses incurred or sustained by anyone resulting from any interpretation made by any of our officers, agents or











Depth Based Data - Maximum Sampling Increment 10.0cm
Filename: C:\logs\BMA_A9B\Field_Data\BMA_A9B_MAIN_LOG_1.dta
System Configuration Dates: Logged 17-JUN-2004: Processed 17-JUN-2004: Plotted 17-JUN-2004: Plotted on 05-MAR-2006 12:33

BEFORE SURVEY CALIBRATION

C:\logs\BMA_A9B\Field_Data\DSC3.dta

General Constants All 000		
General Parameters		
Mud Resistivity	0.108	ohm-metres
Mud Resistivity Temperature	25.000	degrees C
Water Level	0.000	metres
Density/Neutron Processing	Wet Hole	
Hole/Annular Volume and Differential Caliper Parameters		
HVOL Caliper 1	Density Caliper	
HVOL Caliper 2	Density Caliper	
Annular Volume Diameter	7.000	inches
Caliper for Differential Caliper	None	
Rwa Parameters		

Porosity used	Limestone Sonic Porosity		
Resistivity used	Deep Induction		
RWA Constant A	0.610		
RWA Constant M	2.150		
High Resolution Temperature Calibration MCG 142			
	Measured	Calibrated(Deg C)	Field Calibration on 3-MAR-2006,18:44
Lower	0.00	0.00	
Upper	100.00	100.00	
High Resolution Temperature Constants MCG 142			
Pre-filter Length	11		
Gamma Calibration MCG 142			
	Measured	Calibrated (API)	Field Calibration on 3-MAR-2006 18:49
Background	9	6	
Calibrator (Gross)	1351	915	
Calibrator (Net)	1342	909	
Gamma Constants MCG 142			
Gamma Calibrator Number	060		
Mud Density	1.20	gm/cc	
Caliper Source for Processing	Density Caliper		
Tool Position	Centred		
Concentration of KCl	0.00	kppm	
Caliper Calibration MPD 083			
			Base Calibration on 26-FEB-2006 16:04
			Field Calibration on 3-MAR-2006 19:00
Base Calibration			
Reading No	Measured	Calibrator Size (in)	
1	14260	4.01	
2	22438	5.99	
3	30914	7.98	
4	39296	9.94	
5	48592	12.01	
6	N/A	N/A	
Field Calibration			
	Measured Caliper (in)	Actual Caliper (in)	
	7.98	7.98	
Sonic Constants MSS 066			
Maximum Boundary Contrast	100.00	micro-sec/ft	
Fluid Transit Time	189.00	micro-sec/ft	
Limestone Transit Time	47.50	micro-sec/ft	
Sandstone Transit Time	55.50	micro-sec/ft	
Dolomite Transit Time	43.50	micro-sec/ft	
Sonic used for Porosities	3-5' Compensated Sonic		
Correction for Sonde Skew	Applied		
Cycle Stretch Algorithm	Applied		
MN3FT	N/A	micro-sec	
MX3FT	N/A	micro-sec	
Fixed Gate Parameters			
Start Time (micro-sec)	End Time (micro-sec)	Discriminator (mV)	N/A
N/A	N/A	N/A	N/A
N/A	N/A	N/A	N/A
N/A	N/A	N/A	N/A
N/A	N/A	N/A	N/A
N/A	N/A	N/A	N/A
Down Hole Fixed Gate Parameters			
Gate Start	N/A	micro-sec	
Gate Width	N/A	micro-sec	
Initial Discriminator Level	0.0000	mVolts	
Full Waveform Parameters			
Use 3' Waveform to derive TR	No		
Use 4' Waveform to derive TR	No		
Use 5' Waveform to derive TR	No		
Use 6' Waveform to derive TR	No		
3' Waveform Discriminator Level	0.45	mV	

4' Waveform Discriminator Level	0.45	mV
5' Waveform Discriminator Level	0.35	mV
6' Waveform Discriminator Level	0.35	mV
3' Waveform Filter	None	
4' Waveform Filter	None	
5' Waveform Filter	None	
6' Waveform Filter	None	
Semblance Level	0.50	
Semblance Window Width	120.00	micro-sec
Sonic 1 Despiker	100.00	micro-sec/ft
Sonic 2 Despiker	100.00	micro-sec/ft

DOWNHOLE EQUIPMENT

C:\logs\BMA_A9B\Field_Data\DSC3.dta

Compact Swivel Head Adaptor F
SHA 71 Length: 0.83 m Weight: 26.5 lb

Compact Knuckle Joint
SKJ 100 Length: 0.66 m Weight: 24.3 lb

Compact Battery Sub.
MBS 99 Length: 4.41 m Weight: 44.1 lb

Compact Inline Standoff B
MIS 73 Length: 0.65 m Weight: 15.4 lb

Compact Stiff Bridle Electrode Sub.
MBE 18 Length: 3.76 m Weight: 94.8 lb

Compact Inline Standoff B
MIS 138 Length: 0.65 m Weight: 15.4 lb

Compact Stiff Bridle Electrode Sub.
MBE 19 Length: 3.76 m Weight: 94.8 lb

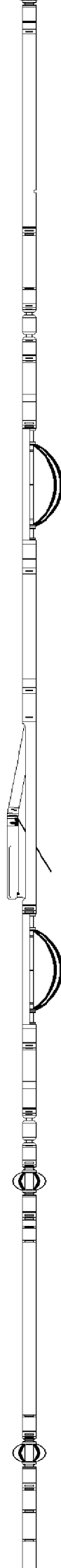
Compact Inline Standoff B
MIS 136 Length: 0.65 m Weight: 15.4 lb

MBE21 - THIRD BRIDLE
MLK 111 Length: 3.76 m Weight: 30.9 lb

Compact Inline Standoff B
MIS 136 Length: 0.65 m Weight: 15.4 lb



MIS 133	Length: 0.65 m	Weight: 15.4 lb
Compact Gamma MCG 142	Length: 2.65 m	Weight: 63.9 lb
Compact Memory Sub A.C MMS 38	Length: 0.95 m	Weight: 30.9 lb
Compact Knuckle Joint SKJ 45	Length: 0.66 m	Weight: 24.3 lb
Compact Swivel Head Adaptor F SHA 64	Length: 0.83 m	Weight: 26.5 lb
Compact Inline Bowspring A MIS 94	Length: 1.74 m	Weight: 33.1 lb
Compact Neutron MDN 85	Length: 1.53 m	Weight: 50.7 lb
Compact Density/Caliper MPD 83	Length: 2.92 m	Weight: 90.4 lb
Compact Inline Bowspring A MIS 24	Length: 1.74 m	Weight: 33.1 lb
Compact Swivel Head Adaptor SHA 28	Length: 0.83 m	Weight: 26.5 lb
Compact Knuckle Joint SKJ 110	Length: 0.66 m	Weight: 24.3 lb
Compact Inline Standoff B MIS 72	Length: 0.65 m	Weight: 15.4 lb
Compact Upper Guard Sub. MUG 30	Length: 2.74 m	Weight: 68.3 lb
Compact Inline Standoff B MIS 141	Length: 0.65 m	Weight: 15.4 lb
Compact Laterolog Electrode Sub. MLE 31	Length: 3.76 m	Weight: 92.6 lb



Compact Inline Standoff B
MIS 127 Length: 0.65 m Weight: 15.4 lb

Compact Lower Guard Sub.
MLG 7 Length: 2.44 m Weight: 55.1 lb

Compact Inline Standoff B
MIS 129 Length: 0.65 m Weight: 15.4 lb

Compact Sonic
MSS 66 Length: 3.82 m Weight: 72.8 lb

Compact Inline Standoff B
MIS 126 Length: 0.65 m Weight: 15.4 lb

Compact Induction
MAI 39 Length: 3.29 m Weight: 48.5 lb

Pressure Bung + Hole Finder
HFS 4 Length: 0.40 m Weight: 6.6 lb

Total Length: 54.01 m Weight: 1201.5 lb



Tool Zero (0.44m from bottom)

All measurements relative to tool zero.

COMPANY	ESSO AUSTRALIA PTY LTD
WELL	BREAM A9B
FIELD	BREAM
PROVINCE/COUNTY	BASS STRAIT
COUNTRY/STATE	AUSTRALIA

Elevation Kelly Bushing	metres	First Reading	2273.00	metres
Elevation Drill Floor	32.82	metres	Depth Driller	2283.00
Elevation Ground Level	59.40	metres	Depth Logger	2280.00
				metres



COMPENSATED SONIC
1:500 MD

